

BEFORE THE FLORIDA PUBLIC SERVICE COMMISSION

DOCKET NO: 960623-EI

IN RE: PETITION TO INITIATE RULEMAKING TO AMEND RULE 25-6.078,  
F.A.C., SCHEDULE OF CHARGES, AND RULE 25-6.082, F.A.C.,  
RECORDS AND REPORTS, BY FLORIDA POWER & LIGHT COMPANY, FLORIDA  
POWER CORPORATION, TAMPA ELECTRIC COMPANY, AND GULF POWER COMPANY

NOTICE OF PROPOSED RULE DEVELOPMENT

TO

ALL INTERESTED PERSONS

ISSUED: February 4, 1997

NOTICE is hereby given pursuant to Section 120.54, Florida Statutes, that the Florida Public Service Commission staff has initiated the development of Rules 25-6.077, 25-6.078, and 25-6.082, Florida Administrative Code, to amend provisions relating to electric utilities reporting underground residential differential cost data. The person to be contacted regarding the proposed rule development is: David P. Wheeler, Division of Electric and Gas, Florida Public Service Commission, 2540 Shumard Oak Blvd., Tallahassee, FL 32399-0862.

The attached Notice of Proposed Rule Development will appear in the February 14, 1997, edition of the Florida Administrative Weekly. If timely requested and not deemed unnecessary by the Commission, a rule development workshop will be held at the following time and place:

Florida Public Service Commission  
2:00 P.M., March 20, 1997  
Betty Easley Conference Center  
Room 234, 4075 Esplanade Way  
Tallahassee, Florida

The request must be submitted in writing and received by the Director, Division of Records and Reporting, Florida Public Service Commission, 2540 Shumard Oak Blvd., Tallahassee, FL 32399-0850, no later than March 7, 1997.

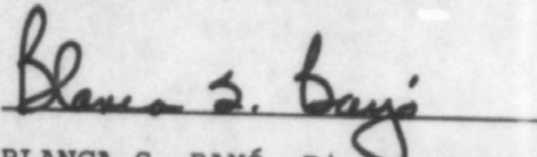
DOCUMENT NUMBER-DATE

01269 FEB-46

FPSC-RECORDS/REPORTING

DOCKET 960623-EI  
PAGE 2

By Direction of the Florida Public Service Commission, this  
4th day of February, 1997.

A handwritten signature in cursive script, reading "Blanca S. Bayó", is written over a horizontal line.

BLANCA S. BAYÓ, Director  
Division of Records & Reporting

( S E A L )

CTM

DOCKET 960623-EI  
PAGE 3

FLORIDA PUBLIC SERVICE COMMISSION

DOCKET NO: 960623-EI

RULE TITLE:

RULE NO.:

Installation of Underground Distribution

Systems Within New Subdivisions 25-6.077

Schedule of Charges 25-6.078

Records and Reports 25-6.082

PURPOSE AND EFFECT: To update and clarify existing rules and to adopt a form for electric utilities to report their annual updates of the underground residential differential cost data.

SUBJECT AREA TO BE ADDRESSED: Reporting requirements for underground residential differential cost data.

SPECIFIC AUTHORITY: 366.05(1) FS.

LAW IMPLEMENTED: 366.03 FS.

IF REQUESTED AND NOT DEEMED UNNECESSARY BY THE AGENCY HEAD, A RULE DEVELOPMENT WORKSHOP WILL BE HELD AT THE TIME, DATE, AND PLACE SHOWN BELOW:

TIME AND DATE: 2:00 p.m., March 20, 1997

PLACE: Room 234, Easley Building, 4075 Esplanade Way,  
Tallahassee, FL 32399-0850.

THE WORKSHOP REQUEST MUST BE SUBMITTED IN WRITING WITHIN 21 DAYS OF THE DATE OF THIS NOTICE TO THE COMMISSION'S DIVISION OF RECORDS AND REPORTING, 2540 SHUMARD OAK BOULEVARD, TALLAHASSEE, FL 32399-0850.

THE PERSON TO BE CONTACTED REGARDING THE PROPOSED RULE DEVELOPMENT IS: David P. Wheeler, Division of Electric and Gas,

Florida Public Service Commission, 2540 Shumard Oak Blvd.,  
Tallahassee, FL 32399-0862.

THE PRELIMINARY TEXT OF THE PROPOSED RULE DEVELOPMENT IS:  
25-6.077 Installation of Underground Distribution Systems  
Within New Subdivisions.

- (1) No Change.
- (2) (a) - (b) No Change.
- (3) Service connection. The service connection to the

building will normally be at or near the part of the building  
nearest the point at which the underground secondary electric  
supply is available to the property to be served. If the service  
connection point selected on any building requires the  
installation of a service lateral in excess of ~~seventy five (75)~~  
feet, then the applicant may be required to pay for the service  
lateral and installation in excess of ~~seventy five (75)~~ feet in  
accordance with the utility's tariff rules and regulations on  
file with the Commission; except as provided under Rule  
25-6.078(5) herein.

Specific Authority: 366.05(1) FS.

Law Implemented: 366.03 FS.

History: New 4-10-71, Amended 4-13-80, 2-12-84, formerly 25-6.77.  
25-6.078 Schedule of Charges.

- (1) Each utility shall file with the Commission on or  
before April 1 of each year ~~within 60 days of the applicability~~  
~~of this rule~~ a written policy that shall become a part of the  
utility's tariff rules and regulations. Such policy shall be

subject to review and approval of the Commission and shall include an Estimated Average Cost Differential, if any, and shall indicate the basis upon which the utility will provide underground service and its method for recovering the difference in cost of an underground system and an equivalent overhead system from the applicant at the time service is extended. The charges to the applicant shall be not more than the estimated difference in cost of an underground system and an equivalent overhead system.

(2) No Change.

(3) Detailed supporting data and analyses study results used to determine the Estimated Average Cost Differential for underground and overhead distribution systems shall be concurrently filed by the utility with the Commission and shall be updated annually using cost data developed from the most recent 12-month period. The utility shall record these data and analyses on Form PSC/EAG 13 ( / ), entitled "Overhead/Underground Residential Differential Cost Data". Form PSC/EAG 13 is incorporated by reference into this rule and may be obtained from the Division of Electric and Gas, 2540 Shumard Oak Boulevard, Tallahassee, Florida 32399-0850, 904/413-6700.

(4) ~~Subject to the provisions of Rule 25-6.079(a),~~ Service for a new multiple-occupancy building shall be constructed underground within the property to be served to the point of delivery at or near the building by the utility at no charge to the applicant, provided the utility is free to construct its

service extension or extensions in the most economical manner.

(5) The ~~method of recovering of~~ the cost differential as filed by the utility and approved by the Commission may not be waived or refunded unless it is mutually agreed by the applicant and the utility that the applicant will perform certain work as defined in the utility's tariff ~~do all of the trenching and backfilling~~, in which case the applicant shall receive a credit, ~~per trench foot for each foot of trenching and backfilling provided by him in accordance with provisions~~ Provision for the credit shall be set forth in the utility's tariff rules and regulations, and shall ~~such credit to~~ be no more in amount than the total charges applicable.

(6) - (8) No Change.

Specific Authority: 366.05(1) FS.

Law Implemented: 366.03 FS.

History: New 4-10-71, Amended 4-13-80, 2-12-84, formerly 25-6.78.

History: New 4-10-71, formerly 25-6.81.

25-6.082 Records and Reports.

(1) To insure the development and availability of appropriate data necessary to satisfy the annual reporting requirements of Rule 25-6.078(32) herein, each utility will undertake to establish and maintain separate records or sub-accounts for underground distribution construction, operation and maintenance costs.

(2) No Change.

Specific Authority: 366.05(1) FS.

DOCKET 960623-EI  
PAGE 7

Law Implemented: 366.03 FS.

History: New 4-10-71, formerly 25-6.82.

PSC/EAG FORMS FOR REPORTING  
THE OVERHEAD/UNDERGROUND RESIDENTIAL DIFFERENTIAL COST DATA  
RULES 25-6.074 THROUGH 25-6.083

<u>Form No.</u>	<u>Title</u>	<u>Page</u>
13.1-13.4	Single Occupancy Buildings with Density Greater than 0.5 Dwellings Per Acre and less than 6 - Single Occupancy 210 Lot Subdivision	
13.1	Overhead vs. Underground Summary Sheet	2
13.2	Cost Per Service Lateral Overhead Material and Labor	3
13.3	Cost Per Service Lateral and Underground Material and Labor	4
13.4	Typical Single Occupancy 210 Lot Subdivision Layouts for both Overhead and Underground Designs	5
13.5-13.11	Single Occupancy Buildings with Density of 6 or more Dwelling Units per Acre - 176 Lot Subdivision	
13.5	Overhead vs. Underground Summary Sheet (Individually metered)	6
13.6	Cost per Service Lateral Overhead Material and Labor (Individually metered)	7
13.7	Cost per Service Lateral Underground Material and Labor (Individually metered)	8
13.8	Overhead vs. Underground Summary Sheet (Multi-Unit Meter Centers)	9
13.9	Cost Per Dwelling Unit Overhead Material and Labor (Multi-Unit Meter Centers)	10
13.10	Cost Per Dwelling Unit Underground Material and Labor (Multi-Unit Meter Centers)	11
13.11	Typical Single Occupancy 176 Lot Subdivision Layouts for both Overhead and Underground Designs	12
13.12	Average Underground Feeder Costs	14
13.13	Actual Operating and Maintenance Distribution Expenses for Overhead and Underground	15
13.14	Joint Trenching with Other Utilities in Residential Subdivisions	16



COMPANY: \_\_\_\_\_

DATE: \_\_\_\_\_

OVERHEAD VS. UNDERGROUND SUMMARY SHEET

- Single Occupancy 210 Lot Subdivision -  
- Cost per Lot -

ITEM	OVERHEAD	UNDERGROUND	DIFFERENTIAL
Labor			
Material			
O&M			
TOTAL			

COMPANY: \_\_\_\_\_

COST PER SERVICE LATERAL OVERHEAD MATERIAL AND LABOR

- Single Occupancy 210 Lot Subdivision -  
- Cost per Lot -

ITEM	MATERIAL <sup>1</sup>	LABOR <sup>4</sup>	TOTAL
Service <sup>2</sup>			
Primary			
Secondary			
Initial Tree Trim			
Poles			
Transformers			
Subtotal			
Stores Handling <sup>3</sup>			
Subtotal			
Engineering <sup>5</sup>			
TOTAL			

<sup>1</sup>Includes Sales Tax

<sup>2</sup>Includes Meter & Meter Socket

<sup>3</sup> \_\_\_\_\_ % of all material except Meters. \_\_\_\_\_ % of Meters

<sup>4</sup>Includes Administration, General & Transportation

<sup>5</sup> \_\_\_\_\_ % of Material and Labor except Transformers and Meters

\_\_\_\_\_ % of Material and Labor for Transformers and Meters

COMPANY: \_\_\_\_\_

DATE: \_\_\_\_\_

COST PER SERVICE LATERAL UNDERGROUND MATERIAL AND LABOR

- Single Occupancy 210 Lot Subdivision -  
- Cost per Lot -

ITEM	MATERIAL <sup>1</sup>	LABOR <sup>4</sup>	TOTAL
Service <sup>2</sup>			
Primary			
Secondary			
Transformers			
Primary Trenching			
Secondary Trenching			
Service Trenching			
Subtotal			
Stores Handling <sup>3</sup>			
Subtotal			
Engineering <sup>5</sup>			
TOTAL			

<sup>1</sup>Includes Sales Tax

<sup>2</sup>Includes Meter & Meter Socket

<sup>3</sup>\_\_\_\_\_% of all material except Meters. \_\_\_\_\_% of Meters

<sup>4</sup>Includes Administration, General & Transportation

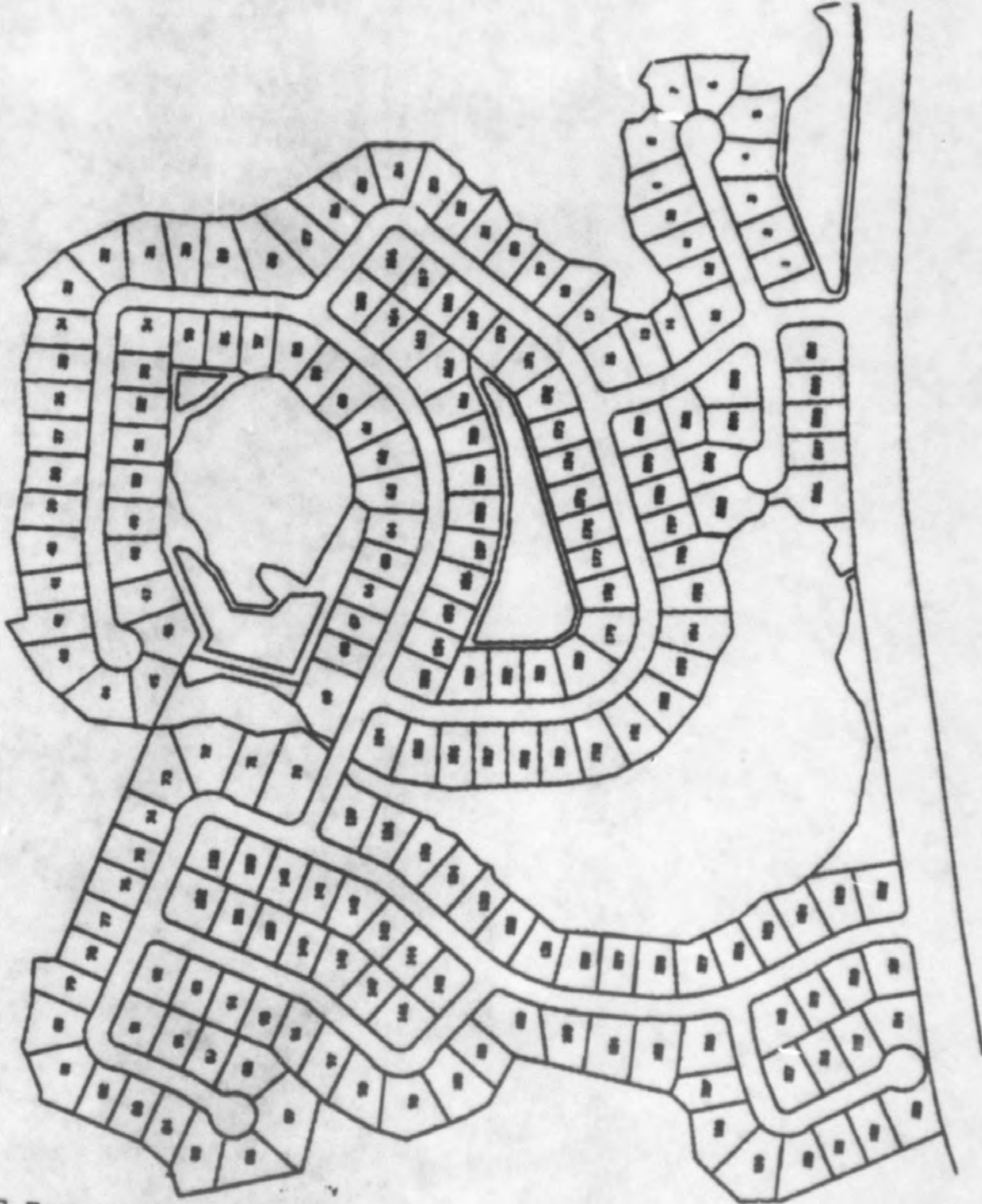
<sup>5</sup>\_\_\_\_\_% of Material and Labor except Transformers and Meters

DOCKET 960623-EI  
PAGE 12

COMPANY: \_\_\_\_\_

DATE: \_\_\_\_\_

TYPICAL SINGLE OCCUPANCY 210 LOT SUBDIVISION LAYOUT



PSC/EAG Form 13.4 (xx/xx)

COMPANY: \_\_\_\_\_

DATE: \_\_\_\_\_

OVERHEAD VS. UNDERGROUND SUMMARY SHEET

-Single Occupancy 176 Lot Subdivision -  
- Individually Metered -  
- Cost per Lot -

ITEM	OVERHEAD	UNDERGROUND	DIFFERENTIAL
Labor			
Material			
Total			

COMPANY: \_\_\_\_\_

DATE: \_\_\_\_\_

COST PER SERVICE LATERAL OVERHEAD MATERIAL AND LABOR

-Single Occupancy 176 Lot Subdivision -  
- Individually Metered -  
- Cost per Lot -

ITEM	MATERIAL <sup>1</sup>	LABOR <sup>4</sup>	TOTAL
Service <sup>2</sup>			
Primary			
Secondary			
Initial Tree Trim			
Poles			
Transformers			
Subtotal			
Stores Handling <sup>3</sup>			
Subtotal			
Engineering <sup>5</sup>			
TOTAL			

<sup>1</sup>Includes Sales Tax

<sup>2</sup>Includes Meter & Meter Socket

<sup>3</sup>\_\_\_\_\_ % of all material except Meters. \_\_\_\_\_ % of Meters

<sup>4</sup>Includes Administration, General & Transportation

<sup>5</sup>\_\_\_\_\_ % of Material and Labor except Transformers and Meters

\_\_\_\_\_ % of Material and Labor for Transformers and Meters

COMPANY: \_\_\_\_\_

DATE: \_\_\_\_\_

COST PER SERVICE LATERAL UNDERGROUND MATERIAL AND LABOR

-Single Occupancy 176 Lot Subdivision -  
- Individually Metered -  
- Cost per Lot -

ITEM	MATERIAL <sup>1</sup>	LABOR <sup>4</sup>	TOTAL
Service <sup>2</sup>			
Primary			
Secondary			
Transformers			
Primary Trenching			
Secondary Trenching			
Service Trenching			
Subtotal			
Stores Handling <sup>3</sup>			
Subtotal			
Engineering <sup>5</sup>			
TOTAL			

<sup>1</sup>Includes Sales Tax

<sup>2</sup>Includes Meter & Meter Socket

<sup>3</sup>\_\_\_\_\_% of all material except Meters. \_\_\_\_% of Meters

<sup>4</sup>Includes Administration, General & Transportation

<sup>5</sup>\_\_\_\_\_% of Material and Labor except Transformers and Meters

\_\_\_\_\_% of Material and Labor for Transformers and Meters

DOCKET 960623-EI

PAGE 16

COMPANY: \_\_\_\_\_

DATE: \_\_\_\_\_

OVERHEAD VS. UNDERGROUND SUMMARY SHEET

-Single Occupancy 176 Lot Subdivision -  
Multi-Unit Meter Centers  
- Cost per Lot -

ITEM	OVERHEAD	UNDERGROUND	DIFFERENTIAL
Labor			
Material			
Total			



COMPANY: \_\_\_\_\_

DATE: \_\_\_\_\_

COST PER SERVICE LATERAL OVERHEAD MATERIAL AND LABOR

-Single Occupancy 176 Lot Subdivision -  
Multi-Unit Meter Centers  
- Cost per Lot -

ITEM	MATERIAL <sup>1</sup>	LABOR <sup>4</sup>	TOTAL
Service <sup>2</sup>			
Primary			
Secondary			
Initial Tree Trim			
Poles			
Transformers			
Subtotal			
Stores Handling <sup>3</sup>			
Subtotal			
Engineering <sup>5</sup>			
TOTAL			

<sup>1</sup>Includes Sales Tax

<sup>2</sup>Includes Meter & Meter Socket

<sup>3</sup>\_\_\_\_ % of all material except Meters. \_\_\_\_ % of Meters

<sup>4</sup>Includes Administration, General & Transportation

<sup>5</sup>\_\_\_\_ % of Material and Labor except Transformers and Meters

\_\_\_\_ % of Material and Labor for Transformers and Meters

DOCKET 960623-EI

PAGE 18

COMPANY: \_\_\_\_\_

DATE: \_\_\_\_\_

COST PER SERVICE LATERAL UNDERGROUND MATERIAL AND LABOR

-Single Occupancy 176 Lot Subdivision -  
Multi-Unit Meter Centers  
- Cost per Lot -

ITEM	MATERIAL <sup>1</sup>	LABOR <sup>4</sup>	TOTAL
Service <sup>2</sup>			
Primary			
Secondary			
Transformers			
Primary Trenching			
Secondary Trenching			
Service Trenching			
Subtotal			
Stores Handling <sup>3</sup>			
Subtotal			
Engineering <sup>5</sup>			
TOTAL			

<sup>1</sup>Includes Sales Tax

<sup>2</sup>Includes Meter & Meter Socket

<sup>3</sup> \_\_\_\_\_ % of all material except Meters. \_\_\_\_\_ % of Meters

<sup>4</sup>Includes Administration, General & Transportation

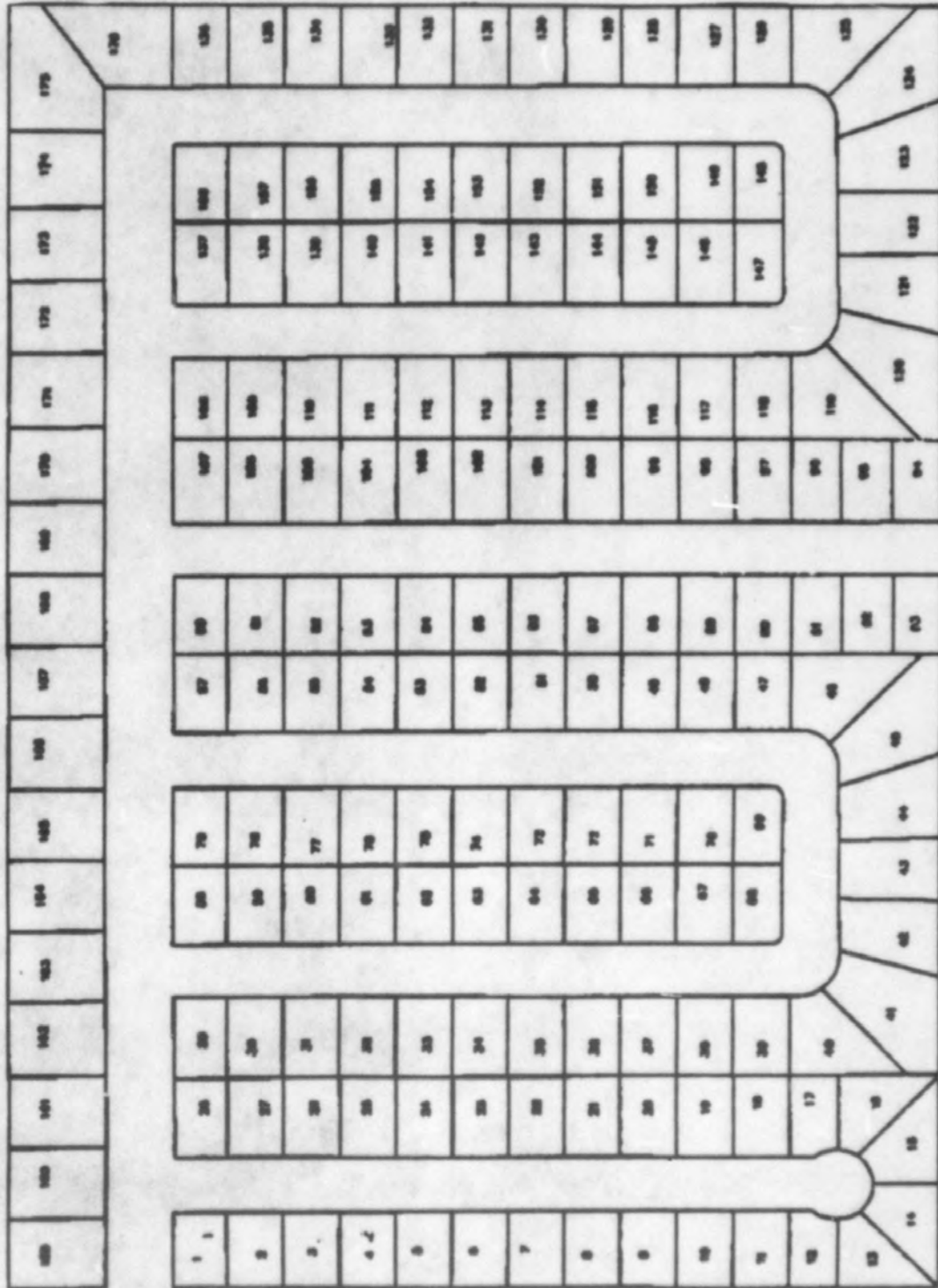
<sup>5</sup> \_\_\_\_\_ % of Material and Labor except Transformers and Meters

\_\_\_\_\_ % of Material and Labor for Transformers and Meters

COMPANY: \_\_\_\_\_

DATE: \_\_\_\_\_

TYPICAL SINGLE OCCUPANCY 176 LOT SUBDIVISION LAYOUT



COMPANY: \_\_\_\_\_

DATE: \_\_\_\_\_

AVERAGE UNDERGROUND FEEDER COSTS

Underground \$/Ft... _____	Overhead \$/Ft... _____	Difference \$/Ft.. _____
With Favorable Trenching \$/Ft... _____		\$/Ft.. _____
Additional Trenching Cost* (Difficult Trenching) \$/Ft... _____		\$/Ft.. _____

\*Difficult trenching charges include underground cost of cable-in-conduit and rock trench adder.

Note: Above costs reflect adjustment of \$ \_\_\_\_\_ for Overhead estimates and \$ \_\_\_\_\_ for Underground estimates.

COMPANY: \_\_\_\_\_

DATE: \_\_\_\_\_

ACTUAL OPERATING & MAINTENANCE DISTRIBUTION EXPENSES IN xxxx  
for Overhead and Underground

OVERHEAD UNDERGROUND

Overhead Line Expenses

Overhead Line Expenses - Work Order

Line Transformer First Installation  
Capitalized-Expense Credit

Line Transformer First Installation  
Expenses-Work Order

Duct System Expenses

Duct System Expenses - Work Order

Maintenance of Overhead Lines

Maintenance of Overhead Lines - Work Order

Maintenance of Overhead lines - Tree Trimming

Maintenance of Overhead Lines -  
Tree Trimming - Work Order

Maintenance of Duct System

Maintenance of Duct System - Work Order

Maintenance of Buried System

Maintenance of Buried System - Work Order

Maintenance of Line Transformers Group A\*

Maintenance of Line Transformers Group B\*

Maintenance of Line Transformers Group C\*

Total \$ \_\_\_\_\_ \$ \_\_\_\_\_

- A\* - Aerial Transformers, Single Phase 100 KVA or less, Capacitors, and Line Regulators. (Generally Used Overhead)
- B\* - Transformers Other Than Group A and C and Network Protectors (Generally Used With Duct System)
- C\* - Padmount Transformers. (Generally Used With Buried System)

COMPANY: \_\_\_\_\_

DATE: \_\_\_\_\_

JOINT TRENCHING WITH OTHER UTILITIES  
in RESIDENTIAL DISTRIBUTION

xxxx ADDITIONS

<u>Date</u> <u>Closed</u>	<u>Location</u>	<u>Work</u> <u>Order</u> <u>Number</u>	<u>Footage</u>	<u>Total</u> <u>Amount</u> <u>Due From</u> <u>Other</u> <u>Utility</u>	<u>Total</u> <u>Amount</u> <u>Due To</u> <u>Other</u> <u>Utility</u>
------------------------------	-----------------	--	----------------	--	--

COMPANY: \_\_\_\_\_

DATE: \_\_\_\_\_

JOINT TRENCHING WITH OTHER UTILITIES  
in RESIDENTIAL DISTRIBUTION  
(continued)

<u>Year</u>	<u>Footage</u> <u>(Feet)</u>	<u>Amount Due From</u> <u>Other Utility</u>	<u>Amount Due To</u> <u>Other Utility</u>
Total for xxxx			
Total for xxxx			
Total for xxxx			
Total for xxxx			
Total for xxxx			
Total for xxxx			
Total for xxxx			
Total for xxxx			
Total for xxxx			
10 Year Total	_____	\$ _____	\$ _____