

REVISED

FLORIDA PUBLIC SERVICE COMMISSION
Capital Circle Office Center • 2540 Shumard Oak Boulevard
Tallahassee, Florida 32399-0850

M E M O R A N D U M

May 7, 1997

TO: DIRECTOR, DIVISION OF RECORDS AND REPORTING (BAYO)

FROM: DIVISION OF LEGAL SERVICES (REYES) *BR* *JP*
DIVISION OF WATER & WASTEWATER (MCCASKILL) *SM* *JS* *BL*

RE: DOCKET NO. 961418-SU - RESPONSE TO COMMISSION ORDER TO
SHOW CAUSE BY MAD HATTER UTILITIES, INC. IN PASCO COUNTY

AGENDA: MAY 19, 1997 - REGULAR AGENDA - ISSUES 3 AND 5 ARE
PROPOSED AGENCY ACTION - INTERESTED PERSONS MAY
PARTICIPATE

CRITICAL DATES: NONE

SPECIAL INSTRUCTIONS: S:\PSC\LEG\WP\961418SU.RCM

CASE BACKGROUND

Section 367.081(4)(b), Florida Statutes, provides that the approved rates of any utility which receives all or any portion of its utility service from a governmental authority or from a water or wastewater utility regulated by the Commission and which redistributes that service to its utility customers shall be automatically increased or decreased without hearing, upon verified notice to the Commission 45 days prior to its implementation of the increase or decrease that the rates charged by the governmental authority or other utility have changed.

On December 12, 1995, after a public hearing, the Pasco County Board of County Commissioners approved a rate change for all customers encompassing the period of January 1, 1996 through September 30, 1999. As a result of this rate change, the rates for all bulk water and/or wastewater customers were decreased effective January 1, 1996. On December 20, 1995, the Commission staff received from Pasco County copies of the notices it sent to utilities regulated by the Florida Public Service Commission (PSC), advising the utilities of the bulk water and/or wastewater rate change. There are nine PSC regulated utilities which purchase water and/or wastewater from Pasco County. According to the notice, Pasco County extended the January 1, 1996 effective date

DOCUMENT NUMBER-DATE

04506 MAY-75

FPSC-RECORDS/REPORTING

DOCKET NO. 961418-WS
MAY 7, 1997

until April 1, 1996 in order to allow the utilities sufficient time to contact the Commission and/or incorporate the new charges into its rate structure.

The bulk water and/or wastewater rate change approved by Pasco County qualifies for a pass-through rate adjustment for PSC regulated utilities pursuant to Section 367.081(4)(b), Florida Statutes. Section 367.081(4)(e), Florida Statutes, provides that a utility may not adjust its rates under this subsection more than two times in any 12 month period. Therefore, on March 29, 1996, staff sent letters to the nine affected utilities regarding the Pasco County rate change advising them that because Pasco County approved two rate changes in 1996, the utilities had the option of using the pass-through statute to adjust their rates accordingly. Specifically, staff informed the utilities that one of the rate changes could be filed as a pass-through in conjunction with an index and the other pass-through adjustment could be filed separately to be effective for October 1, 1996.

Only three of the nine (Utilities Inc. of Florida, Betmar Utilities, Inc. and Jasmine Lakes Utilities Corporation) filed for a pass-through rate reduction. Another utility, Virginia City Utilities, Inc. (Virginia City) had a staff assisted rate case in Docket No. 960625-WU, through which the county's decreased rates were incorporated. By Order No. PSC-96-1226-FOF-WS, issued September 27, 1996, in Docket No. 960878-WS, the remaining five utilities, Hudson Utilities, Inc., d/b/a, Hudson Bay Company (Hudson); Forest Hills Utilities, Inc. (Forest Hills); Mad Hatter Utilities, Inc. (MHU or Utility); Aloha Utilities, Inc. (Aloha); and Southern States Utilities, Inc. (SSU) were ordered to show cause in writing why their rates should not be adjusted, effective April 1, 1996, to reflect the reduction in purchased water and/or wastewater costs to bulk water and/or wastewater customers in Pasco County. Order No. PSC-96-1226-FOF-WS also required the utilities to file the information required by Rule 25-30.425(1)(a) through (f), Florida Administrative Code, along with a calculation of the rate reduction. By Order No. PSC-97-0458-FOF-SU, issued April 22, 1997, in Docket No. 961417-SU, the Commission ordered that no refund was appropriate for Hudson Utilities, Inc. Further, by Order No. PSC-97-0457-FOF-WU, issued April 22, 1997, in Docket No. 961428-SU, for Forest Hills, the Commission ordered that no reduction in rates was required. However, to date, no decision has been made in the cases of MHU, Aloha, and SSU.

On October 17, 1996, MHU filed its response to the show cause order. In its response, MHU requested a waiver of that provision of the Order requiring it to file the information required by Rule 25-30.425(1)(a) through (f), Florida Administrative Code, along with a calculation of the rate reduction. In addition, to the

DOCKET NO. 961418-WS
MAY 7, 1997

extent that the Commission proposes to retroactively apply any reduction based upon the reduced purchased costs, MHU requests a hearing on the questions of the appropriate level of any prospective rate reduction and overearnings and on the legality and appropriateness and amount of any retroactive rate reduction.

On March 20, 1997, staff filed its recommendation for the April 1, 1997, agenda conference. At the April 1, 1997 agenda conference, after much discussion, the Commission deferred this item to allow staff time to review the settlement proposal offered by the utility in its October 17, 1996 response to the Commission's show cause order. On April 18, 1997, the utility provided a revised settlement proposal which included a calculation of the actual 1996 cost savings from April 1, 1996 through December 31, 1996, and the annualized cost savings to the utility, resulting from the reduced cost of purchased wastewater treatment. As a result of the additional information filed, staff has revised its recommendation previously filed on March 20, 1997.

Mad Hatter Utilities, Inc. is a Class B utility serving approximately 1,890 water and 1,804 wastewater customers in Pasco County. MHU owns and operates water and wastewater systems in three separate communities: Linda Lakes, Foxwood and Turtle Lakes. According to the utility's 1995 annual report, gross annual operating revenues were \$442,014 and \$856,686 for the water and wastewater systems, respectively. The utility reported net operating revenue of \$37,123 for the water and \$4,092 for the wastewater system. The utility's 1996 annual report reflected gross annual operating revenues of \$468,225 and \$876,750 for the water and wastewater systems, respectively. Net operating income was reported as \$42,359 for water and \$60,486 for wastewater. The purpose of this recommendation is to determine whether MHU's rates should be adjusted to reflect the reduction in purchased wastewater costs.

DOCKET NO. 961418-WS
MAY 7, 1997

DISCUSSION OF ISSUES

ISSUE 1: Should Mad Hatter Utilities, Inc.'s request for a waiver of that provision set forth in Order No. PSC-96-1226-FOF-WS requiring the utility to file the information required by Rule 25-30.425(1)(a) through (f), Florida Administrative Code, along with a calculation of the rate reduction, be granted?

RECOMMENDATION: Because staff was able to obtain the necessary and pertinent information from other independent sources, this issue is moot, and a vote on the utility's request is no longer required. (REYES)

STAFF ANALYSIS: As stated earlier, on October 17, 1996, MHU filed its response to Order No. PSC-96-1226-FOF-WS, issued September 27, 1996, in Docket No. 960878-WS. Order No. PSC-96-1226-FOF-WS required MHU to show cause in writing why its rates should not be adjusted to reflect the reduction in purchased bulk water and/or wastewater costs in Pasco County.

In its written response to the show cause order, MHU contends that the second ordering paragraph of Order No. PSC-96-1226-FOF-WS, which requires each utility to file the information required by Rule 25-30.425(1)(a) through (f), Florida Administrative Code, along with a calculation of the rate reduction, is contrary to the Commission's decision at agenda and the filing of that information prior to a determination of what, if any, rate reduction is appropriate is premature and a waste of the utility's time, resources, and consulting fees. Further, the utility requested a waiver of that provision of the Order until such time as a determination was made as to the amount, if any, of a rate reduction for the utility's systems. However, because staff was able to obtain the necessary and pertinent information from other independent sources, this issue is moot, and a vote on the utility's request for a waiver is no longer required.

DOCKET NO. 961418-WS
MAY 7, 1997

ISSUE 2: Should the Commission accept the settlement proposal offered by Mad Hatter Utilities, Inc. on April 18, 1997?

RECOMMENDATION: Yes, the Commission should accept the settlement proposal offered by Mad Hatter Utilities, Inc. on April 18, 1997. The rates for the Foxwood and Turtle Lakes wastewaters system should be reduced by \$70,000 or \$.52 per thousand gallons of wastewater treated on a prospective basis. The utility should submit revised tariffs and a proposed customer notice reflecting the appropriate rates and the reason for the reduction. The approved rates should be effective for service rendered on or after the stamped approval date on the tariff sheets pursuant to Rule 25-30.475(1), Florida Administrative Code. The rates should not be implemented until proof of notice has been received by the customers. The utility should provide proof of the date notice was given within 10 days after the date of the notice. (REYES, MCCASKILL)

STAFF ANALYSIS: MHU owns and operates water and wastewater systems in three separate communities: Linda Lakes, Foxwood and Turtle Lakes. The utility does not purchase water from Pasco County. However, MHU's Foxwood and Turtle Lakes systems purchase wastewater treatment from Pasco County. MHU's Linda Lakes system does not purchase any wastewater treatment from Pasco County. As stated earlier, on October 17, 1996, MHU filed its response to Order No. PSC-96-1226-FOF-WS, issued September 27, 1996, in Docket No. 960878-WS. Order No. PSC-96-1226-FOF-WS required MHU to show cause in writing why its rates should not be adjusted to reflect the reduction in purchased water and/or wastewater costs to bulk water and/or wastewater customers in Pasco County.

The utility asserts in its response that it disagrees with the proposition that the Commission has the statutory authority to require a decrease in rates of a regulated utility based upon a decrease in the cost of bulk service received from a governmental provider. The utility further asserts that it does not believe the Commission may reduce rates under Section 367.081(4)(b), Florida Statutes, or any other statutory section without first determining that overearnings exist.

Staff believes, however, that the Commission is vested with the authority to order a reduction in rates when the utility fails to initiate a decrease pursuant to Section 367.081(4)(b), Florida Statutes. Staff believes that it is appropriate for the Commission to require pass-through decreases in the event that the utility meets or exceeds the minimum of its authorized range of return on equity to reflect the reduction in purchased water and/or wastewater costs to bulk water and/or wastewater customers in Pasco County. This is consistent with the Commission's decision in the

DOCKET NO. 961418-WS
MAY 7, 1997

cases of Hudson Utilities, Inc., Docket No. 961417-SU, Order No. PSC-97-0458-FOF-SU and Forest Hills Utilities, Inc., Docket No. 961428-SU, Order No. PSC-97-0457-FOF-WU, issued April 22, 1997.

In its response, MHU failed to file the information required by Rule 25-30.425(1)(a) through (f), Florida Administrative Code, pursuant to Order No. PSC-96-1226-FOF-WS. Instead, MHU provided the same legal arguments it raised at the September 3, 1996 Agenda Conference. In addition, the utility provided a narrative assessment of each system, proposing to reduce its rates for the Foxwood and Turtle Lakes wastewater systems, on a prospective basis, for the entire amount of the reduction in purchased wastewater treatment.

In the absence of the utility filing the information required by Rule 25-30.425(1)(a) through (f), Florida Administrative Code, Staff used the information contained in the utility's 1995 annual report to calculate the rate reduction. Using the most recent purchases from Pasco County for the twelve month period ended December 31, 1995, staff calculated the decreased cost in purchased wastewater treatment. Staff's recommendation of March 29, 1997, was filed and presented to the Commission at the April 1, 1997, Agenda Conference, accordingly. After much discussion, the Commission deferred this item to allow staff time to review the settlement proposal offered by the utility in its October 17, 1996, response to the show cause order.

On April 18, 1997, the utility filed a revised settlement proposal which included a calculation of the actual 1996 cost savings from April 1, 1996 through December 31, 1996, and the annualized cost savings to the utility resulting from the reduced cost of the purchased wastewater treatment. Based on the information provided staff has revised its recommendation of March 20, 1997 as follows.

Mad Hatter Wastewater System - In its response to Order No. PSC-96-1226-FOF-WS, the utility presented the following arguments: Because Mad Hatter purchases the majority of its wastewater treatment from Pasco County and because the reduction in purchased wastewater treatment cost will have a material impact on the utility's operations, the utility does concede that this reduction in cost may result in an achieved rate of return for 1996 which exceeds the utility's last authorized rate of return. Some portion of this reduced cost will only cause the utility's achieved rate of return on a prospective basis to approach or equate to its authorized rate of return. However, rather than incur the substantial costs of responding to further inquiries and of litigation, the utility is willing on a prospective basis to reduce rates for the entire amount of the reduction in purchased

DOCKET NO. 961418-WS
MAY 7, 1997

wastewater treatment for its Foxwood and Turtle Lakes Systems (the only systems which purchase wastewater treatment from Pasco County).

In addition, the utility stated that if the Commission accepts the prospective proposal by MHU to pass-through the reduction in purchased wastewater treatment, based upon the difference in the rate applied in 1995 and that effective October 1, 1996, MHU will immediately file the information necessary to effectuate that pass-through in wastewater charges.

On April 18, 1997, the utility filed a revised settlement proposal, in which it revised or updated its proposed offer of settlement of October 17, 1996, based upon actual information for 1996. The utility provided actual 1996 purchases of wastewater treatment from Pasco County and a calculation of the actual 1996 cost savings from April 1, 1996 to December 31, 1996, and the annualized cost savings resulting from the reduced cost to the utility of the purchased wastewater treatment. The information showed that the utility purchased 120,979,000 gallons of wastewater treatment from Pasco County in 1996. On April 1, 1996, Pasco County's bulk wastewater rate was reduced from \$3.11 to \$2.20 per thousand gallons. On October 1, 1996, the rate was increased from \$2.20 to \$2.23. The utility calculated a reduction in cost of \$111,479 by multiplying the total thousands of gallons purchased (120,979) by \$.88, the difference in the old purchased wastewater treatment rate and the new rate (\$3.11 - \$2.23). This amount was then adjusted for regulatory assessment fees at 4.5%, resulting in a total cost savings of \$133,625.

However, based on the utility's 1996 annual report, the utility's net income was \$60,486, resulting in an achieved rate of return of 26.09%. As a result, the utility calculated an overearnings for 1996 of \$35,494. The utility stated that since only approximately one-third of the cost savings will result in overearnings to the utility, an adjustment to the original settlement proposal of October 17, 1996, was necessary to avoid pushing the utility into a substantial loss position. The utility, therefore, proposes to reduce rates for the Foxwood and Turtle Lakes wastewater systems by a total of \$70,000. The utility stated that this offer would not only cover any refund which would be appropriate under an earnings test for 1996, but also would include the prospective reduction. Further, the utility states that the customers would receive twice the prospective rate reduction to which they are entitled and would receive that reduction on an unlimited prospective basis.

DOCKET NO. 961418-WS
MAY 7, 1997

As stated previously, staff believes that a utility's rates should be reduced to reflect a reduction in purchased water and/or wastewater costs in the event that the utility meets or exceeds the minimum of its authorized range of return on equity. By Order No. PSC-93-0295-FOF-WS, issued February 24, 1993, in Docket No. 910637-WS, the Commission authorized MHU a 12.44% return on equity, with a range of reasonableness between 11.44% to 13.44%. Further, MHU's rate of return was set at 10.78%, with a range of 10.71% to 10.85%. Based on a review of the 1995 annual report and other documents on file, staff calculated an achieved rate of return of 1.56% for the wastewater system and a negative return on equity of 2.14% prior to any decrease in purchased wastewater treatment costs. Since the utility did not meet or exceed the minimum of its authorized range of return on equity, no reduction would be required.

However, as previously stated, the utility indicated that approximately one-third of the costs savings would result in overearnings to the utility in 1996. Therefore, to avoid costly litigation and the substantial cost entailed in any potential refund, the utility proposes to reduce its rates by \$70,000 or \$.52 per thousand gallons (\$70,000/133,625) on a prospective basis.

Staff has reviewed the information provided by the utility in its April 18, 1997 settlement proposal, and staff has also reviewed the utility's 1996 annual report. Based on the 1996 annual report, the utility's achieved rate of return was 26.09%, and the allowed rate of return based on the utility's current capital structure is 8.79%. Therefore, the utility is in an overearnings position for 1996. The utility's current capital structure consists of 94.78% debt and 5.22% customer deposits. The utility has a deficit in its retained earnings; as such, the allowed rate of return calculation for 1996 does not include an equity component. As a result, staff calculates that the utility's allowed net operating income should be \$20,796, instead of \$24,992 as reflected in the utility's proposed settlement proposal of April 18, 1997. As a result, staff has calculated the amount of overearnings for 1996 to be \$39,690 (\$60,486 - \$20,796), instead of \$35,494 as calculated by the utility. However, for purposes of this proceeding, staff believes that the utility's proposed reduction of \$70,000 on a prospective basis is a reasonable offer of settlement to cover any proposed refund which would be appropriate under an earnings test for 1996 as a result of the purchased wastewater decrease, and the prospective rate reduction. Staff, therefore, recommends that the Commission accept the utility's settlement proposal to reduce the rates for the Foxwood and Turtle Lakes wastewater systems by \$70,000 or \$.52 per thousand gallons of wastewater treated, on a prospective basis.

DOCKET NO. 961418-WS
MAY 7, 1997

In addition to adjusting its wastewater rates, the utility should file revised tariff sheets along with a proposed customer notice reflecting the appropriate rates and the reason for the reduction. The rates should be effective for service rendered as of the stamped approval date on the tariff sheets, provided the customers have received notice. The tariff sheets should be approved upon staff's verification that the tariffs are consistent with the Commission's decision and that the customer notice is adequate. The utility should provide proof of the date notice was given within 10 days after the date of the notice.

If the effective date of the new rates falls within a regular billing cycle, the initial bills at the new rates may be prorated. The old charge should be prorated based on the number of days in the billing cycle before the effective date of the new rates. The new charge should be prorated based on the number of days in the billing cycle on or after the effective date of the new rates. In no event should the rates be effective for service rendered prior to the stamped approval date.

DOCKET NO. 961418-WS
MAY 7, 1997

ISSUE 3: Should Mad Hatter Utilities, Inc. be required to refund excess purchased wastewater costs collected from April 1, 1996 to the effective date of the new rates?

RECOMMENDATION: No, the utility did not meet or exceed the minimum of the range of its last authorized rate of return on equity for the Foxwood and Turtle Lakes wastewater systems; therefore, no reduction was required as a result of the pass-through decrease, and no refund is appropriate. (MCCASKILL)

STAFF ANALYSIS: As previously stated, the utility did not meet or exceed the minimum of the range of its last authorized rate of return on equity; therefore, no reduction in rates would be required as a result of the pass-through decrease, and no refund is appropriate.

DOCKET NO. 961418-WS
MAY 7, 1997

ISSUE 4: Should this docket be closed?

RECOMMENDATION: Upon expiration of the protest period, if a timely protest is not received from a substantially affected person, this docket should be closed. (REYES)

STAFF ANALYSIS: Upon expiration of the protest period, if a timely protest is not received from a substantially affected person, this docket should be closed.

CDIC CHARGES

Case Number : 96A63734

Meter : 5C 23.68

\$23.68

Locking Device Cost	Number	Cost	Total
Lock Ring			
Front Entry			
Side Entry			
HASP Locking Assembly			
Bracket Locking Assembly			
Barrel Lock (1 1/16" Hasp)			
2" Barrel Padlock			
FT Knox Lock			
Lock Pin			
Johnny Bar 24" - 34"			
Johnny Bar 31" - 50"			
Johnny Bar 35" - 54"			
Johnny Bar 48" - 66"			
Sub Total			

Locking Device

Vehicle	Time	Rate	Total
Meter Truck	0.5	\$4.58	2.29
Trouble Truck			
Line / Trailer Truck			
Underground			
CO. Passenger Car			
Sub Total			\$2.29

\$2.29

Contract Car @ \$0.30 Per Mile , Miles Driven 40

\$12.00

Miscellaneous

Vehicle Cost

\$14.29

Pictures @ \$1.08 # of
Other

Miscellaneous

Labor

	Time	Rate	Total
Investigator #1	2	\$62.25	\$124.50
Investigator #2	1	\$62.25	\$62.25
Meterman "A"	0.5	\$52.88	\$26.44
Meterman "A"			
Sub Total			\$213.19

Labor - Sub Total \$213.19

Meter Test 1 \$26.44

Accounting 70.8 ~~\$36.80~~

Clerical 70 71.78
Other

Labor \$310.43

Total Amount Of CDIC \$348.40

349.35

STOMER NAME AND SERVICE ADDRESS
 AM A RODRIGUEZ

BILL ACCT
 2077066450

REASON FOR ADJUSTMENT
 NON-INITIAL CURR-DIVER CR*

-- AS BILLED ----- RE-BILLED--		AS BILLED ----- RE-BILLED		-- AS BILLED-----RE-BILLED				
SERVICE TO	05/07/90	05/07/90	SERVICE TO	06/06/90	06/06/90	SERVICE TO	07/06/90	07/06/90
SERVICE FROM	04/05/90	04/05/90	SERVICE FROM	05/07/90	05/07/90	SERVICE FROM	06/06/90	06/06/90
RATE SCHED	RS-1	RS-1	RATE SCHED	RS-1	RS-1	RATE SCHED	RS-1	RS-1
SERVICE DAYS		32	SERVICE DAYS		30	SERVICE DAYS		30
LMIS CRDT DAYS			LMIS CRDT DAYS			LMIS CRDT DAYS		
KWH RDG	36154	36154	KWH RDG	37567	37567	KWH RDG	39145	39145
DEMAND RDG			DEMAND RDG			DEMAND RDG		
ON-PK KWH RDG			ON-PK KWH RDG			ON-PK KWH RDG		
ON-PK DEM RDG			ON-PK DEM RDG			ON-PK DEM RDG		
TOT KWH USED	904	2230	TOT KWH USED	1413	2765	TOT KWH USED	1578	2977
DEM USED			DEM USED			DEM USED		
ON-PK USAGE			ON-PK USAGE			ON-PK USAGE		
ONP DEMAND			ONP DEMAND			ONP DEMAND		
OFFP KWH USED			OFFP KWH USED			OFFP KWH USED		
SERV AMT	68.02	170.49	SERV AMT	107.35	211.84	SERV AMT	120.10	228.22
LD CNTL CR	0.00	0.00	LD CNTL CR	0.00	0.00	LD CNTL CR	0.00	0.00
GR RCT TAX			GR RCT TAX			GR RCT TAX	.61	1.16
FRANC CHG	1.99	4.99	FRANC CHG	3.14	6.20	FRANC CHG	3.53	6.71
UTILITY TX	5.61	14.11	UTILITY TX	8.87	17.54	UTILITY TX	9.98	19.00
FL SLS TAX			FL SLS TAX			FL SLS TAX		
PRE CNTL CR			PRE CNTL CR			PRE CNTL CR		
TRANSF CR			TRANSF CR			TRANSF CR		
CURTAIL CR			CURTAIL CR			CURTAIL CR		
TOTAL AMT	75.62	189.59	TOTAL AMT	119.36	235.58	TOTAL AMT	134.22	255.09
RECALCULATED AMOUNT	113.97		RECALCULATED AMOUNT	116.22		RECALCULATED AMOUNT	120.87	

CUSTOMER NAME AND SERVICE ADDRESS
M A RODRIGUEZBILL ACCT
2077066450REASON FOR ADJUSTMENT
NON-INHER CURR-DIVER CR*

-- AS BILLED ----- RE-BILLED--

AS BILLED ----- RE-BILLED

-- AS BILLED-----RE-BILLED

SERVICE TO		08/07/90		08/07/90		SERVICE TO		09/06/90		09/06/90		SERVICE TO		10/05/90		10/05/90	
SERVICE FROM		07/06/90		07/06/90		SERVICE FROM		08/07/90		08/07/90		SERVICE FROM		09/06/90		09/06/90	
RATE SCHED		RS-1		RS-1		RATE SCHED		RS-1		RS-1		RATE SCHED		RS-1		RS-1	
SERVICE DAYS				32		SERVICE DAYS				30		SERVICE DAYS				29	
LMIS CRDT DAYS						LMIS CRDT DAYS						LMIS CRDT DAYS					
KWH RDG	41137	41137	KWH RDG	43049	43049	KWH RDG	44760	44760	44760	44760	44760	44760	44760	44760	44760	44760	44760
DEMAND RDG			DEMAND RDG			DEMAND RDG						DEMAND RDG					
ON-PK KWH RDG			ON-PK KWH RDG			ON-PK KWH RDG						ON-PK KWH RDG					
ON-PK DEM RDG			ON-PK DEM RDG			ON-PK DEM RDG						ON-PK DEM RDG					
KWH USED	1992	3162	TOT KWH USED	1912	2965	TOT KWH USED	1711	2982	2982	2982	2982	TOT KWH USED	1711	2982	2982	2982	2982
DEM USED			DEM USED			DEM USED						DEM USED					
ON-PK USAGE			ON-PK USAGE			ON-PK USAGE						ON-PK USAGE					
ONP DEMAND			ONP DEMAND			ONP DEMAND						ONP DEMAND					
OFFP KWH USED			OFFP KWH USED			OFFP KWH USED						OFFP KWH USED					
SERV AMT	152.10	242.51	SERV AMT	145.91	227.28	SERV AMT	133.30	233.67	233.67	233.67	233.67	SERV AMT	133.30	233.67	233.67	233.67	233.67
LD CNTL CR	0.00	0.00	LD CNTL CR	0.00	0.00	LD CNTL CR	0.00	0.00	0.00	0.00	0.00	LD CNTL CR	0.00	0.00	0.00	0.00	0.00
GR RCT TAX	.78	1.24	GR RCT TAX	.74	1.16	GR RCT TAX	.68	1.19	1.19	1.19	1.19	GR RCT TAX	.68	1.19	1.19	1.19	1.19
FRANC CHG	4.47	7.13	FRANC CHG	4.29	6.68	FRANC CHG	3.92	6.87	6.87	6.87	6.87	FRANC CHG	3.92	6.87	6.87	6.87	6.87
UTILITY TX	12.65	20.19	UTILITY TX	12.13	18.92	UTILITY TX	11.07	19.43	19.43	19.43	19.43	UTILITY TX	11.07	19.43	19.43	19.43	19.43
FL SLS TAX			FL SLS TAX			FL SLS TAX						FL SLS TAX					
PRE CNTL CR			PRE CNTL CR			PRE CNTL CR						PRE CNTL CR					
TRANSF CR			TRANSF CR			TRANSF CR						TRANSF CR					
CURTAIL CR			CURTAIL CR			CURTAIL CR						CURTAIL CR					
TOTAL AMT	170.00	271.07	TOTAL AMT	163.07	254.04	TOTAL AMT	148.97	261.16	261.16	261.16	261.16	TOTAL AMT	148.97	261.16	261.16	261.16	261.16
RECALCULATED AMOUNT	101.07		RECALCULATED AMOUNT	90.97		RECALCULATED AMOUNT	112.19					RECALCULATED AMOUNT	112.19				

STOMER NAME AND SERVICE ADDRESS
 AM A RODRIGUEZ

BILL ACCT
 2077066450

REASON FOR ADJUSTMENT
 NON-INHER CURR-DIVER CR*

-- AS BILLED ----- RE-BILLED--		AS BILLED ----- RE-BILLED		-- AS BILLED-----RE-BILLED				
DATE TO	11/05/90	11/05/90	SERVICE TO	12/06/90	12/06/90	SERVICE TO	01/07/91	01/07/91
DATE FROM	10/05/90	10/05/90	SERVICE FROM	11/05/90	11/05/90	SERVICE FROM	12/06/90	12/06/90
RATE SCHED	RS-1	RS-1	RATE SCHED	RS-1	RS-1	RATE SCHED	RS-1	RS-1
SERVICE DAYS		31	SERVICE DAYS		31	SERVICE DAYS		32
CRDT DAYS			LMIS CRDT DAYS			LMIS CRDT DAYS		
KWH RDG	46288	46288	KWH RDG	47259	47259	KWH RDG	48267	48267
DEMAND RDG			DEMAND RDG			DEMAND RDG		
ON-PK KWH RDG			ON-PK KWH RDG			ON-PK KWH RDG		
ON-PK DEM RDG			ON-PK DEM RDG			ON-PK DEM RDG		
TOT KWH USED	1528	2373	TOT KWH USED	971	1937	TOT KWH USED	1008	1981
DEM USED			DEM USED			DEM USED		
ON-PK USAGE			ON-PK USAGE			ON-PK USAGE		
ONP DEMAND			ONP DEMAND			ONP DEMAND		
OFFP KWH USED			OFFP KWH USED			OFFP KWH USED		
SERV AMT	118.83	185.56	SERV AMT	74.85	151.14	SERV AMT	82.31	163.52
LD CNTL CR	0.00	0.00	LD CNTL CR	0.00	0.00	LD CNTL CR	0.00	0.00
GR RCT TAX	.61	.95	GR RCT TAX	.38	.77	GR RCT TAX	.42	.83
FRANC CHG	3.49	5.46	FRANC CHG	2.20	4.44	FRANC CHG	2.42	4.81
UTILITY TX	9.86	15.42	UTILITY TX	6.20	12.55	UTILITY TX	6.46	12.87
FL SLS TAX			FL SLS TAX			FL SLS TAX		
PRE CNTL CR			PRE CNTL CR			PRE CNTL CR		
TRANSF CR			TRANSF CR			TRANSF CR		
CURTAIL CR			CURTAIL CR			CURTAIL CR		
TOTAL AMT	132.79	207.39	TOTAL AMT	83.63	168.90	TOTAL AMT	91.61	182.03
RECALCULATED AMOUNT	74.60		RECALCULATED AMOUNT	85.27		RECALCULATED AMOUNT	90.42	

CUSTOMER NAME AND SERVICE ADDRESS
 IN A RODRIGUEZ

BILL ACCT
 2077066450

REASON FOR ADJUSTMENT
 NON-INHER CURR-DIVER CR*

-- AS BILLED ----- RE-BILLED--

AS BILLED ----- RE-BILLED

-- AS BILLED-----RE-BILLED

SERVICE TO		SERVICE FROM		SERVICE TO		SERVICE FROM		SERVICE TO		SERVICE FROM	
SCHED		RS-1		RS-1		RS-1		RS-1		RS-1	
SERVICE DAYS		29		30		29		SERVICE DAYS		29	
CRDT DAYS		LMIS CRDT DAYS		LMIS CRDT DAYS		LMIS CRDT DAYS		LMIS CRDT DAYS		LMIS CRDT DAYS	
RDG	49134	49134	KWH RDG	50123	50123	KWH RDG	50946	50946			
LD RDG			DEMAND RDG			DEMAND RDG					
KWH RDG			ON-PK KWH RDG			ON-PK KWH RDG					
DEM RDG			ON-PK DEM RDG			ON-PK DEM RDG					
KWH USED	867	1766	TOT KWH USED	989	1835	TOT KWH USED	823	1989			
USED			DEM USED			DEM USED					
PK USAGE			ON-PK USAGE			ON-PK USAGE					
DEMAND			ONP DEMAND			ONP DEMAND					
PKW USED			OFFP KWH USED			OFFP KWH USED					
SERV AMT	70.53	145.58	SERV AMT	80.71	151.33	SERV AMT	62.34	153.28			
LD CNTL CR	0.00	0.00	LD CNTL CR	0.00	0.00	LD CNTL CR	0.00	0.00			
GR RCT TAX	.36	.74	GR RCT TAX	.41	.77	GR RCT TAX	.32	.78			
FRANC CHG	2.07	4.28	FRANC CHG	2.37	4.45	FRANC CHG	2.15	5.28			
UTILITY TX	5.52	11.45	UTILITY TX	6.33	11.90	UTILITY TX	5.36	13.23			
FL SLS TAX			FL SLS TAX			FL SLS TAX					
PRE CNTL CR			PRE CNTL CR			PRE CNTL CR					
TRANSF CR			TRANSF CR			TRANSF CR					
CURTAIL CR			CURTAIL CR			CURTAIL CR					
TOTAL AMT	78.48	162.05	TOTAL AMT	89.82	168.45	TOTAL AMT	70.17	172.57			
RECALCULATED AMOUNT	83.57		RECALCULATED AMOUNT	78.63		RECALCULATED AMOUNT	102.40				

CUSTOMER NAME AND SERVICE ADDRESS
M A RODRIGUEZBILL ACCT
2077066450REASON FOR ADJUSTMENT
NON-INHER CURR-DIVER CR*

-- AS BILLED ----- RE-BILLED--			AS BILLED ----- RE-BILLED			-- AS BILLED-----RE-BILLED		
SERVICE TO	05/06/91	05/06/91	SERVICE TO	06/05/91	06/05/91	SERVICE TO	07/05/91	07/05/91
SERVICE FROM	04/05/91	04/05/91	SERVICE FROM	05/06/91	05/06/91	SERVICE FROM	06/05/91	06/05/91
RATE SCHED	RS-1	RS-1	RATE SCHED	RS-1	RS-1	RATE SCHED	RS-1	RS-1
SERVICE DAYS		31	SERVICE DAYS		30	SERVICE DAYS		30
LMIS CRDT DAYS			LMIS CRDT DAYS			LMIS CRDT DAYS		
KWH RDG	52369	52369	KWH RDG	53833	53833	KWH RDG	55379	55379
DEMAND RDG			DEMAND RDG			DEMAND RDG		
ON-PK KWH RDG			ON-PK KWH RDG			ON-PK KWH RDG		
ON-PK DEM RDG			ON-PK DEM RDG			ON-PK DEM RDG		
TOT KWH USED	1423	2477	TOT KWH USED	1464	2768	TOT KWH USED	1546	2945
DEM USED			DEM USED			DEM USED		
ON-PK USAGE			ON-PK USAGE			ON-PK USAGE		
ONP DEMAND			ONP DEMAND			ONP DEMAND		
OFFP KWH USED			OFFP KWH USED			OFFP KWH USED		
SERV AMT	109.13	191.33	SERV AMT	112.33	214.04	SERV AMT	118.73	227.84
LD CNTL CR	0.00	0.00	LD CNTL CR	0.00	0.00	LD CNTL CR	0.00	0.00
GR RCT TAX	.56	.98	GR RCT TAX	.57	1.09	GR RCT TAX	.91	1.75
FRANC CHG	3.76	6.58	FRANC CHG	3.87	7.37	FRANC CHG	4.10	7.86
UTILITY TX	9.41	16.52	UTILITY TX	9.69	18.49	UTILITY TX	10.27	19.73
FL SLS TAX			FL SLS TAX			FL SLS TAX		
PRE CNTL CR			PRE CNTL CR			PRE CNTL CR		
TRANSF CR			TRANSF CR			TRANSF CR		
CURTAIL CR			CURTAIL CR			CURTAIL CR		
TOTAL AMT	122.86	215.41	TOTAL AMT	126.46	240.99	TOTAL AMT	134.01	257.18
RECALCULATED AMOUNT	92.55		RECALCULATED AMOUNT	114.53		RECALCULATED AMOUNT	123.17	

CUSTOMER NAME AND SERVICE ADDRESS
 JUAN A RODRIGUEZ

BILL ACCT
 2077066450

REASON FOR ADJUSTMENT
 NON-INHER CURR-DIVER CR*

-- AS BILLED ----- RE-BILLED--

AS BILLED ----- RE-BILLED

-- AS BILLED-----RE-BILLED

-- AS BILLED ----- RE-BILLED--		AS BILLED ----- RE-BILLED		-- AS BILLED-----RE-BILLED				
SERVICE TO	08/06/91	08/06/91	SERVICE TO	09/05/91	09/05/91	SERVICE TO	10/04/91	10/04/91
SERVICE FROM	07/05/91	07/05/91	SERVICE FROM	08/06/91	08/06/91	SERVICE FROM	09/05/91	09/05/91
RATE SCHED	RS-1	RS-1	RATE SCHED	RS-1	RS-1	RATE SCHED	RS-1	RS-1
SERVICE DAYS		32	SERVICE DAYS		30	SERVICE DAYS		29
LMIS CRDT DAYS			LMIS CRDT DAYS			LMIS CRDT DAYS		
KWH RDG	57425	57425	KWH RDG	59244	59244	KWH RDG	60760	60760
DEMAND RDG			DEMAND RDG			DEMAND RDG		
ON-PK KWH RDG			ON-PK KWH RDG			ON-PK KWH RDG		
ON-PK DEM RDG			ON-PK DEM RDG			ON-PK DEM RDG		
TOT KWH USED	2046	3186	TOT KWH USED	1819	3081	TOT KWH USED	1516	2791
DEM USED			DEM USED			DEM USED		
ON-PK USAGE			ON-PK USAGE			ON-PK USAGE		
ONP DEMAND			ONP DEMAND			ONP DEMAND		
OFFP KWH USED			OFFP KWH USED			OFFP KWH USED		
SERV AMT	157.72	246.63	SERV AMT	140.03	238.44	SERV AMT	116.73	216.44
LD CNTL CR	0.00	0.00	LD CNTL CR	0.00	0.00	LD CNTL CR	0.00	0.00
GR RCT TAX	1.21	1.89	GR RCT TAX	1.07	1.83	GR RCT TAX	.90	1.66
FRANC CHG	5.44	8.51	FRANC CHG	4.83	8.23	FRANC CHG	4.03	7.47
UTILITY TX	13.65	21.36	UTILITY TX	12.12	20.65	UTILITY TX	10.09	18.74
FL SLS TAX			FL SLS TAX			FL SLS TAX		
PRE CNTL CR			PRE CNTL CR			PRE CNTL CR		
TRANSF CR			TRANSF CR			TRANSF CR		
CURTAIL CR			CURTAIL CR			CURTAIL CR		
TOTAL AMT	178.02	278.39	TOTAL AMT	158.05	269.15	TOTAL AMT	131.75	244.31
RECALCULATED AMOUNT	100.37		RECALCULATED AMOUNT	111.10		RECALCULATED AMOUNT	112.56	

CUSTOMER NAME AND SERVICE ADDRESS
 AN A RODRIGUEZ

BILL ACCT
 2077066450

REASON FOR ADJUSTMENT
 NON-INHER CURR-DIVER CR*

-- AS BILLED ----- RE-BILLED--

AS BILLED ----- RE-BILLED

-- AS BILLED-----RE-BILLED

AS BILLED	RE-BILLED	AS BILLED	RE-BILLED	AS BILLED	RE-BILLED
SERVICE TO SERVICE FROM RATE SCHED SERVICE DAYS LMIS CRDT DAYS	08/04/92 07/06/92 RS-1 29	08/04/92 07/06/92 RS-1 29	SERVICE TO SERVICE FROM RATE SCHED SERVICE DAYS LMIS CRDT DAYS	09/03/92 08/04/92 RS-1 30	09/03/92 08/04/92 RS-1 30
				SERVICE TO SERVICE FROM RATE SCHED SERVICE DAYS LMIS CRDT DAYS	10/05/92 09/03/92 RS-1 32
KWH RDG DEMAND RDG ON-PK KWH RDG ON-PK DEM RDG	71923	71923	KWH RDG DEMAND RDG ON-PK KWH RDG ON-PK DEM RDG	73689	73689
					75015
					75015
TOT KWH USED DEM USED ON-PK USAGE ONP DEMAND OFFP KWH USED	1713	3357	TOT KWH USED DEM USED ON-PK USAGE ONP DEMAND OFFP KWH USED	1766	2820
					1326
					2663
SERV AMT LD CNTL CR GR RCT TAX FRANC CHG UTILITY TX FL SLS TAX PRE CNTL CR TRANSF CR CURTAIL CR	125.88 0.00 1.29 4.83 11.32	248.46 0.00 2.55 9.53 22.37	SERV AMT LD CNTL CR GR RCT TAX FRANC CHG UTILITY TX FL SLS TAX PRE CNTL CR TRANSF CR CURTAIL CR	129.83 0.00 1.33 4.98 11.68	208.43 0.00 2.14 8.00 18.77
					99.76
					0.00
					2.07
					7.76
					18.59
					9.16
					0.00
					1.02
					3.83
					9.16
					18.59
					9.16
TOTAL AMT	143.32	282.91	TOTAL AMT	147.82	237.34
					113.77
					230.61
RECALCULATED AMOUNT	139.59		RECALCULATED AMOUNT	89.52	116.84

STOMER NAME AND SERVICE ADDRESS
 M A RODRIGUEZ

BILL ACCT
 2077066450

REASON FOR ADJUSTMENT
 NON-INHR CURR-DIVLR CR*

-- AS BILLED ----- RE-BILLED--

AS BILLED ----- RE-BILLED

-- AS BILLED-----RE-BILLED

-- AS BILLED ----- RE-BILLED--		AS BILLED ----- RE-BILLED		-- AS BILLED-----RE-BILLED				
DATE TO	11/03/92	11/03/92	SERVICE TO	12/04/92	12/04/92	SERVICE TO	01/06/93	01/06/93
DATE FROM	10/05/92	10/05/92	SERVICE FROM	11/03/92	11/03/92	SERVICE FROM	12/04/92	12/04/92
RATE SCHED	RS-1	RS-1	RATE SCHED	RS-1	RS-1	RATE SCHED	RS-1	RS-1
DATE DAYS		29	SERVICE DAYS		31	SERVICE DAYS		33
CRDT DAYS			LMIS CRDT DAYS			LMIS CRDT DAYS		
KWH RDG	76089	76089	KWH RDG	77032	77032	KWH RDG	78068	78068
DEMAND RDG			DEMAND RDG			DEMAND RDG		
ON-PK KWH RDG			ON-PK KWH RDG			ON-PK KWH RDG		
ON-PK DEM RDG			ON-PK DEM RDG			ON-PK DEM RDG		
TOT KWH USED	1074	2570	TOT KWH USED	943	2140	TOT KWH USED	1036	1983
DEMAND USED			DEMAND USED			DEMAND USED		
ON-PK USAGE			ON-PK USAGE			ON-PK USAGE		
ONP DEMAND			ONP DEMAND			ONP DEMAND		
OFFP KWH USED			OFFP KWH USED			OFFP KWH USED		
SERV AMT	80.45	195.07	SERV AMT	70.40	162.12	SERV AMT	77.55	150.09
LD CNTL CR	0.00	0.00	LD CNTL CR	0.00	0.00	LD CNTL CR	0.00	0.00
GR RCT TAX	.83	2.00	GR RCT TAX	.72	1.66	GR RCT TAX	.80	1.54
FRANC CHG	3.09	7.48	FRANC CHG	2.70	6.22	FRANC CHG	2.98	5.76
UTILITY TX	7.38	17.93	UTILITY TX	6.46	14.90	UTILITY TX	7.12	13.79
FL SLS TAX			FL SLS TAX			FL SLS TAX		
PRE CNTL CR			PRE CNTL CR			PRE CNTL CR		
TRANSF CR			TRANSF CR			TRANSF CR		
CURTAIL CR			CURTAIL CR			CURTAIL CR		
TOTAL AMT	91.75	222.48	TOTAL AMT	80.28	184.90	TOTAL AMT	88.45	171.18
RECALCULATED AMOUNT	130.73		RECALCULATED AMOUNT	104.62		RECALCULATED AMOUNT	82.73	

STOMER NAME AND SERVICE ADDRESS
 AN A RODRIGUEZ

BILL ACCT
 2077066450

REASON FOR ADJUSTMENT
 NON-INHER CURR-DIVER CR*

-- AS BILLED ----- RE-BILLED--			AS BILLED ----- RE-BILLED			-- AS BILLED-----RE-BILLED		
VICE TO	02/03/93	02/03/93	SERVICE TO	03/05/93	03/05/93	SERVICE TO	04/06/93	04/06/93
VICE FROM	01/06/93	01/06/93	SERVICE FROM	02/03/93	02/03/93	SERVICE FROM	03/05/93	03/05/93
E SCHED	RS-1	RS-1	RATE SCHED	RS-1	RS-1	RATE SCHED	RS-1	RS-1
VICE DAYS		28	SERVICE DAYS		30	SERVICE DAYS		32
S CRDT DAYS			LMIS CRDT DAYS			LMIS CRDT DAYS		
RDC	78951	78951	KWH RDC	79886	79886	KWH RDC	80999	80999
AND RDC			DEMAND RDC			DEMAND RDC		
KWH RDC			ON-PK KWH RDC			ON-PK KWH RDC		
DEM RDC			ON-PK DEM RDC			ON-PK DEM RDC		
KWH USED	883	1713	TOT KWH USED	935	1673	TOT KWH USED	1113	1931
USED			DEM USED			DEM USED		
PK USAGE			ON-PK USAGE			ON-PK USAGE		
DEMAND			ONP DEMAND			ONP DEMAND		
P KWH USED			OFFP KWH USED			OFFP KWH USED		
SERV AMT	65.81	129.40	SERV AMT	69.81	126.34	SERV AMT	85.46	149.63
CNTL CR	0.00	0.00	LD CNTL CR	0.00	0.00	LD CNTL CR	0.00	0.00
RCT TAX	.67	1.33	GR RCT TAX	.72	1.30	GR RCT TAX	.88	1.53
INC CHG	2.52	4.97	FRANC CHG	2.68	4.85	FRANC CHG	3.05	5.35
LITY TX	6.03	11.89	UTILITY TX	6.40	11.61	UTILITY TX	7.23	12.68
SLS TAX			FL SLS TAX			FL SLS TAX		
CNTL CR			PRE CNTL CR			PRE CNTL CR		
NSF CR			TRANSF CR			TRANSF CR		
TAIL CR			CURTAIL CR			CURTAIL CR		
CESS CHG								
AGE CHG								
IM CHG								
ADJ								
DIFF								
TOTAL AMT	75.03	147.59	TOTAL AMT	79.61	144.10	TOTAL AMT	96.62	169.19
RECALCULATED AMOUNT	72.56		RECALCULATED AMOUNT	64.49		RECALCULATED AMOUNT	72.57	

STOMER NAME AND SERVICE ADDRESS
AN A RODRIGUEZ

BILL ACCT
2077066450

REASON FOR ADJUSTMENT
NON-INHER CURR-DIVER CR*

-- AS BILLED ----- RE-BILLED--

AS BILLED ----- RE-BILLED

-- AS BILLED-----RE-BILLED

DESCRIPTION	05/05/93	05/05/93	SERVICE TO	06/04/93	06/04/93	SERVICE TO	07/06/93	07/06/93
	04/06/93	04/06/93	SERVICE FROM	05/05/93	05/05/93	SERVICE FROM	06/04/93	06/04/93
	RS-1	RS-1	RATE SCHED	RS-1	RS-1	RATE SCHED	RS-1	RS-1
		29	SERVICE DAYS		30	SERVICE DAYS		32
			LMIS CRDT DAYS			LMIS CRDT DAYS		
KWH RDG	81848	81848	KWH RDG	83144	83144	KWH RDG	85059	85059
DEMAND RDG			DEMAND RDG			DEMAND RDG		
KWH RDG			ON-PK KWH RDG			ON-PK KWH RDG		
DEM RDG			ON-PK DEM RDG			ON-PK DEM RDG		
KWH USED	849	2036	TOT KWH USED	1296	2619	TOT KWH USED	1915	3090
USED			DEM USED			DEM USED		
PK USAGE			ON-PK USAGE			ON-PK USAGE		
DEMAND			ONP DEMAND			ONP DEMAND		
P KWH USED			OFFP KWH USED			OFFP KWH USED		
SERV AMT	64.74	157.85	SERV AMT	99.82	203.59	SERV AMT	148.37	240.53
LD CNTL CR	0.00	0.00	LD CNTL CR	0.00	0.00	LD CNTL CR	0.00	0.00
GR RCT TAX	.66	1.62	GR RCT TAX	1.02	2.09	GR RCT TAX	1.52	2.47
FRANC CHG	2.31	5.64	FRANC CHG	3.57	7.27	FRANC CHG	5.30	8.59
UTILITY TX	5.47	13.38	UTILITY TX	8.45	17.27	UTILITY TX	12.57	20.40
FL SLS TAX			FL SLS TAX			FL SLS TAX		
PRE CNTL CR			PRE CNTL CR			PRE CNTL CR		
TRANSF CR			TRANSF CR			TRANSF CR		
CURTAIL CR			CURTAIL CR			CURTAIL CR		
TOTAL AMT	73.18	178.49	TOTAL AMT	112.86	230.22	TOTAL AMT	167.76	271.99
RECALCULATED AMOUNT	105.31		RECALCULATED AMOUNT	117.36		RECALCULATED AMOUNT	104.23	

STOMER NAME AND SERVICE ADDRESS
 AN A RODRIGUEZ

BILL ACCT
 2077066450

REASON FOR ADJUSTMENT
 NON-INHER CURR-DIVER CR*

-- AS BILLED ----- RE-BILLED--

AS BILLED ----- RE-BILLED

-- AS BILLED-----RE-BILLED

AS BILLED	RE-BILLED	AS BILLED	RE-BILLED	AS BILLED	RE-BILLED
VICE TO 11/03/93	11/03/93	SERVICE TO 12/06/93	12/06/93	SERVICE TO 01/06/94	01/06/94
VICE FROM 10/05/93	10/05/93	SERVICE FROM 11/03/93	11/03/93	SERVICE FROM 12/06/93	12/06/93
E SCHED RS-1	RS-1	RATE SCHED RS-1	RS-1	RATE SCHED RS-1	RS-1
VICE DAYS 29	29	SERVICE DAYS 33	33	SERVICE DAYS 31	31
S CRDT DAYS		LMIS CRDT DAYS		LMIS CRDT DAYS	
RDC 92150	92150	KWH RDC 93336	93336	KWH RDC 94628	94628
AND RDC		DEMAND RDC		DEMAND RDC	
KWH RDC		ON-PK KWH RDC		ON-PK KWH RDC	
DEM RDC		ON-PK DEM RDC		ON-PK DEM RDC	
KWH USED 1527	2500	TOT KWH USED 1186	2216	TOT KWH USED 1292	1795
USED		DEM USED		DEM USED	
PK USAGE		ON-PK USAGE		ON-PK USAGE	
DEMAND		ONP DEMAND		ONP DEMAND	
P KWH USED		OFFP KWH USED		OFFP KWH USED	
IV AMT 113.85	187.59	SERV AMT 88.02	166.07	SERV AMT 96.06	134.16
CNTL CR 0.00	0.00	LD CNTL CR 0.00	0.00	LD CNTL CR 0.00	0.00
RCT TAX 1.17	1.92	GR RCT TAX .90	1.70	GR RCT TAX .99	1.38
ANC CHG 4.07	6.70	FRANC CHG 3.14	5.93	FRANC CHG 3.43	4.79
LITY TX 10.25	16.91	UTILITY TX 7.92	14.96	UTILITY TX 8.64	12.08
SLS TAX		FL SLS TAX		FL SLS TAX	
CNTL CR		PRE CNTL CR		PRE CNTL CR	
NSF CR		TRANSF CR		TRANSF CR	
TAIL CR		CURTAIL CR		CURTAIL CR	
CESS CHG					
AGE CHG					
CHG					
ADJ					
DIFF					
TOTAL AMT 129.34	213.12	TOTAL AMT 99.98	188.66	TOTAL AMT 109.12	152.41
RECALCULATED AMOUNT 83.78		RECALCULATED AMOUNT 88.68		RECALCULATED AMOUNT 43.29	

CUSTOMER NAME AND SERVICE ADDRESS
AN A RODRIGUEZ

BILL ACCT
2077066450

REASON FOR ADJUSTMENT
NON-INHER CURR-DIVER CR*

-- AS BILLED ----- RE-BILLED--

AS BILLED ----- RE-BILLED

-- AS BILLED-----RE-BILLED

DESCRIPTION	02/04/94	01/06/94	02/04/94	01/06/94	SERVICE TO	04/06/94	02/04/94	04/06/94	SERVICE TO	05/05/94	04/06/94	05/05/94
SERVICE FROM	02/04/94	01/06/94	02/04/94	01/06/94	SERVICE FROM	04/06/94	02/04/94	04/06/94	SERVICE FROM	05/05/94	04/06/94	05/05/94
SCHED	RS-1	RS-1	RS-1	RS-1	RATE SCHED	RS-1	RS-1	RS-1	RATE SCHED	RS-1	RS-1	RS-1
SERVICE DAYS		29		29	SERVICE DAYS	29		29	SERVICE DAYS	29		29
CRDT DAYS					LMIS CRDT DAYS				LMIS CRDT DAYS			
KWH RDG	95626		95626		KWH RDG	96687		96687	KWH RDG	97618		97618
DEMAND RDG					DEMAND RDG				DEMAND RDG			
ON-PK KWH RDG					ON-PK KWH RDG				ON-PK KWH RDG			
ON-PK DEM RDG					ON-PK DEM RDG				ON-PK DEM RDG			
TOT KWH USED	998		1760		TOT KWH USED	1067		1827	TOT KWH USED	931		2091
DEM USED					DEM USED				DEM USED			
ON-PK USAGE					ON-PK USAGE				ON-PK USAGE			
ONP DEMAND					ONP DEMAND				ONP DEMAND			
OFFP KWH USED					OFFP KWH USED				OFFP KWH USED			
SERV AMT	71.49		127.46		SERV AMT	75.44		130.48	SERV AMT	65.58		149.60
LD CNTL CR	0.00		0.00		LD CNTL CR	0.00		0.00	LD CNTL CR	0.00		0.00
GR RCT TAX	.73		1.31		GR RCT TAX	.77		1.34	GR RCT TAX	.67		1.53
FRANC CHG	2.55		4.55		FRANC CHG	2.20		3.80	FRANC CHG	1.91		4.36
UTILITY TX	6.63		11.83		UTILITY TX	7.03		12.18	UTILITY TX	6.11		13.96
FL SLS TAX					FL SLS TAX				FL SLS TAX			
PRE CNTL CR					PRE CNTL CR				PRE CNTL CR			
TRANSF CR					TRANSF CR				TRANSF CR			
CURTAIL CR					CURTAIL CR				CURTAIL CR			
TOTAL AMT	81.40		145.15		TOTAL AMT	85.44		147.80	TOTAL AMT	74.27		169.45
RECALCULATED AMOUNT	63.75				RECALCULATED AMOUNT	62.36			RECALCULATED AMOUNT	95.18		

CUSTOMER NAME AND SERVICE ADDRESS
IN A RODRIGUEZBILL ACCT
2077066450REASON FOR ADJUSTMENT
NON-INHR CURR-DIVR CR*

-- AS BILLED ----- RE-BILLED--

AS BILLED ----- RE-BILLED

-- AS BILLED-----RE-BILLED

AS BILLED	RE-BILLED	AS BILLED	RE-BILLED	AS BILLED	RE-BILLED
SERVICE TO SERVICE FROM RATE SCHED SERVICE DAYS LMIS CRDT DAYS	06/06/94 05/05/94 RS-1 32	06/06/94 05/05/94 RS-1 32	SERVICE TO SERVICE FROM RATE SCHED SERVICE DAYS LMIS CRDT DAYS	07/06/94 06/06/94 RS-1 30	07/06/94 06/06/94 RS-1 30
SERVICE TO SERVICE FROM RATE SCHED SERVICE DAYS LMIS CRDT DAYS	08/04/94 07/06/94 RS-1 29	08/04/94 07/06/94 RS-1 29	SERVICE TO SERVICE FROM RATE SCHED SERVICE DAYS LMIS CRDT DAYS	08/04/94 07/06/94 RS-1 29	08/04/94 07/06/94 RS-1 29
KWH RDG DEMAND RDG ON-PK KWH RDG ON-PK DEM RDG	98453	98453	KWH RDG DEMAND RDG ON-PK KWH RDG ON-PK DEM RDG	99511	99511
TOT KWH USED DEM USED ON-PK USAGE ONP DEMAND OFFP KWH USED	835	2396	TOT KWH USED DEM USED ON-PK USAGE ONP DEMAND OFFP KWH USED	1058	2747
SERV AMT LD CNTL CR GR RCT TAX FRANC CHG UTILITY TX FL SLS TAX PRE CNTL CR TRANSF CR CURTAIL CR	58.63 0.00 .60 1.71 5.46	171.70 0.00 1.76 5.00 16.03	SERV AMT LD CNTL CR GR RCT TAX FRANC CHG UTILITY TX FL SLS TAX PRE CNTL CR TRANSF CR CURTAIL CR	74.79 0.00 .77 2.18 6.97	197.12 0.00 2.02 5.75 18.41
TOTAL AMT	66.40	194.49	TOTAL AMT	84.71	223.30
RECALCULATED AMOUNT	128.09		RECALCULATED AMOUNT	138.59	
TOTAL AMT			TOTAL AMT		74.04
					253.31
RECALCULATED AMOUNT			RECALCULATED AMOUNT		179.27

STOMER NAME AND SERVICE ADDRESS
 AN A RODRIGUEZ

BILL ACCT
 2077066450

REASON FOR ADJUSTMENT
 NON-INHER CURR-DIVER CR*

-- AS BILLED ----- RE-BILLED--

AS BILLED ----- RE-BILLED

-- AS BILLED-----RE-BILLED

SERVICE TO		SERVICE FROM		SERVICE TO		SERVICE FROM	
DATE	RS-1	DATE	RS-1	DATE	RS-1	DATE	RS-1
09/02/94		09/02/94		10/04/94		10/04/94	
08/04/94		08/04/94		09/02/94		09/02/94	
RS-1		RS-1		RS-1		RS-1	
29		29		32		32	
SERVICE DAYS		SERVICE DAYS		SERVICE DAYS		SERVICE DAYS	
LMIS CRDT DAYS		LMIS CRDT DAYS		LMIS CRDT DAYS		LMIS CRDT DAYS	
1191		1191		2339		2339	
KWH RDG		KWH RDG		KWH RDG		KWH RDG	
DEMAND RDG		DEMAND RDG		DEMAND RDG		DEMAND RDG	
ON-PK KWH RDG		ON-PK KWH RDG		ON-PK KWH RDG		ON-PK KWH RDG	
ON-PK DEM RDG		ON-PK DEM RDG		ON-PK DEM RDG		ON-PK DEM RDG	
752		2962		1148		2945	
TOT KWH USED		TOT KWH USED		TOT KWH USED		TOT KWH USED	
DEM USED		DEM USED		DEM USED		DEM USED	
ON-PK USAGE		ON-PK USAGE		ON-PK USAGE		ON-PK USAGE	
ONP DEMAND		ONP DEMAND		ONP DEMAND		ONP DEMAND	
OFFP KWH USED		OFFP KWH USED		OFFP KWH USED		OFFP KWH USED	
52.62		212.70		81.65		212.35	
SERV AMT		SERV AMT		SERV AMT		SERV AMT	
0.00		0.00		0.00		0.00	
LD CNTL CR		LD CNTL CR		LD CNTL CR		LD CNTL CR	
.54		2.18		.84		2.18	
GR RCT TAX		GR RCT TAX		GR RCT TAX		GR RCT TAX	
1.53		6.20		2.38		6.19	
FRANC CHG		FRANC CHG		FRANC CHG		FRANC CHG	
4.90		19.86		7.52		19.60	
UTILITY TX		UTILITY TX		UTILITY TX		UTILITY TX	
FL SLS TAX		FL SLS TAX		FL SLS TAX		FL SLS TAX	
PRE CNTL CR		PRE CNTL CR		PRE CNTL CR		PRE CNTL CR	
TRANSF CR		TRANSF CR		TRANSF CR		TRANSF CR	
CURTAIL CR		CURTAIL CR		CURTAIL CR		CURTAIL CR	
59.59		240.94		92.39		240.32	
TOTAL AMT		TOTAL AMT		TOTAL AMT		TOTAL AMT	
181.35				147.93		158.91	
RECALCULATED AMOUNT		RECALCULATED AMOUNT		RECALCULATED AMOUNT		RECALCULATED AMOUNT	

CUSTOMER NAME AND SERVICE ADDRESS
N A RODRIGUEZ

BILL ACCT
2077066450

REASON FOR ADJUSTMENT
NON-INHER CURR-DIVER CR*

-- AS BILLED ----- RE-BILLED--

AS BILLED ----- RE-BILLED

-- AS BILLED-----RE-BILLED

12/06/94		12/06/94		01/06/95		01/06/95		02/06/95		02/06/95	
11/03/94		11/03/94		12/06/94		12/06/94		01/06/95		01/06/95	
RS-1		RS-1		RS-1		RS-1		RS-1		RS-1	
33		33		31		31		31		31	
SERVICE TO		SERVICE TO		SERVICE TO		SERVICE TO		SERVICE TO		SERVICE TO	
SERVICE FROM		SERVICE FROM		SERVICE FROM		SERVICE FROM		SERVICE FROM		SERVICE FROM	
RATE SCHED		RATE SCHED		RATE SCHED		RATE SCHED		RATE SCHED		RATE SCHED	
SERVICE DAYS		SERVICE DAYS		SERVICE DAYS		SERVICE DAYS		SERVICE DAYS		SERVICE DAYS	
LMIS CRDT DAYS		LMIS CRDT DAYS		LMIS CRDT DAYS		LMIS CRDT DAYS		LMIS CRDT DAYS		LMIS CRDT DAYS	
KWH RDC	4237	KWH RDC	4237	KWH RDC	5027	KWH RDC	5027	KWH RDC	5798	KWH RDC	5798
DEMAND RDC		DEMAND RDC		DEMAND RDC		DEMAND RDC		DEMAND RDC		DEMAND RDC	
ON-PK KWH RDC		ON-PK KWH RDC		ON-PK KWH RDC		ON-PK KWH RDC		ON-PK KWH RDC		ON-PK KWH RDC	
ON-PK DEM RDC		ON-PK DEM RDC		ON-PK DEM RDC		ON-PK DEM RDC		ON-PK DEM RDC		ON-PK DEM RDC	
TOT KWH USED	1158	TOT KWH USED	2480	TOT KWH USED	790	TOT KWH USED	2254	TOT KWH USED	771	TOT KWH USED	1879
DEM USED		DEM USED		DEM USED		DEM USED		DEM USED		DEM USED	
ON-PK USAGE		ON-PK USAGE		ON-PK USAGE		ON-PK USAGE		ON-PK USAGE		ON-PK USAGE	
ONP DEMAND		ONP DEMAND		ONP DEMAND		ONP DEMAND		ONP DEMAND		ONP DEMAND	
OFFP KWH USED		OFFP KWH USED		OFFP KWH USED		OFFP KWH USED		OFFP KWH USED		OFFP KWH USED	
SERV AMT	82.38	SERV AMT	178.53	SERV AMT	55.61	SERV AMT	162.10	SERV AMT	54.22	SERV AMT	134.82
LD CNTL CR	0.00	LD CNTL CR	0.00	LD CNTL CR	0.00	LD CNTL CR	0.00	LD CNTL CR	0.00	LD CNTL CR	0.00
GR RCT TAX	.84	GR RCT TAX	1.83	GR RCT TAX	.57	GR RCT TAX	1.66	GR RCT TAX	.56	GR RCT TAX	1.38
FRANC CHG	2.40	FRANC CHG	5.20	FRANC CHG	1.62	FRANC CHG	4.72	FRANC CHG	1.58	FRANC CHG	3.93
UTILITY TX	7.59	UTILITY TX	16.47	UTILITY TX	5.12	UTILITY TX	14.96	UTILITY TX	4.99	UTILITY TX	12.44
FL SLS TAX		FL SLS TAX		FL SLS TAX		FL SLS TAX		FL SLS TAX		FL SLS TAX	
PRE CNTL CR		PRE CNTL CR		PRE CNTL CR		PRE CNTL CR		PRE CNTL CR		PRE CNTL CR	
TRANSF CR		TRANSF CR		TRANSF CR		TRANSF CR		TRANSF CR		TRANSF CR	
CURTAIL CR		CURTAIL CR		CURTAIL CR		CURTAIL CR		CURTAIL CR		CURTAIL CR	
TOTAL AMT	93.21	TOTAL AMT	202.03	TOTAL AMT	62.92	TOTAL AMT	183.44	TOTAL AMT	61.35	TOTAL AMT	152.57
RECALCULATED AMOUNT	108.82	RECALCULATED AMOUNT	120.52	RECALCULATED AMOUNT	91.22	RECALCULATED AMOUNT		RECALCULATED AMOUNT		RECALCULATED AMOUNT	

CUSTOMER NAME AND SERVICE ADDRESS
 JUAN A RODRIGUEZ

BILL ACCT
 2077066450

REASON FOR ADJUSTMENT
 NON-INHER CURR-DIVER CR*

-- AS BILLED ----- RE-BILLED--

AS BILLED ----- RE-BILLED

-- AS BILLED-----RE-BILLED

DATE TO	03/07/95	03/07/95	SERVICE TO	04/05/95	04/05/95	SERVICE TO	05/04/95	05/04/95
DATE FROM	02/06/95	02/06/95	SERVICE FROM	03/07/95	03/07/95	SERVICE FROM	04/05/95	04/05/95
RATE SCHED	RS-1	RS-1	RATE SCHED	RS-1	RS-1	RATE SCHED	RS-1	RS-1
SERVICE DAYS	29	29	SERVICE DAYS	29	29	SERVICE DAYS	29	29
LMIS CRDT DAYS			LMIS CRDT DAYS			LMIS CRDT DAYS		
KWH RDG	6804	6804	KWH RDG	7480	7480	KWH RDG	8290	8290
DEMAND RDG			DEMAND RDG			DEMAND RDG		
ON-PK KWH RDG			ON-PK KWH RDG			ON-PK KWH RDG		
ON-PK DEM RDG			ON-PK DEM RDG			ON-PK DEM RDG		
TOT KWH USED	1006	1806	TOT KWH USED	676	1739	TOT KWH USED	810	1940
DEM USED			DEM USED			DEM USED		
ON-PK USAGE			ON-PK USAGE			ON-PK USAGE		
ONP DEMAND			ONP DEMAND			ONP DEMAND		
OFFP KWH USED			OFFP KWH USED			OFFP KWH USED		
SERV AMT	71.31	129.51	SERV AMT	48.63	126.09	SERV AMT	57.74	140.87
LD CNTL CR	0.00	0.00	LD CNTL CR	0.00	0.00	LD CNTL CR	0.00	0.00
GR RCT TAX	.73	1.33	GR RCT TAX	.50	1.29	GR RCT TAX	.59	1.44
FRANC CHG	2.08	3.77	FRANC CHG	1.40	3.63	FRANC CHG	1.66	4.05
UTILITY TX	6.57	11.95	UTILITY TX	4.37	11.33	UTILITY TX	5.18	12.66
FL SLS TAX			FL SLS TAX			FL SLS TAX		
PRE CNTL CR			PRE CNTL CR			PRE CNTL CR		
TRANSF CR			TRANSF CR			TRANSF CR		
CURTAIL CR			CURTAIL CR			CURTAIL CR		
TOTAL AMT	80.69	146.56	TOTAL AMT	54.90	142.34	TOTAL AMT	65.17	159.02
RECALCULATED AMOUNT	65.87		RECALCULATED AMOUNT	87.44		RECALCULATED AMOUNT	93.85	

STOMER NAME AND SERVICE ADDRESS
 AM A RODRIGUEZ

BILL ACCT
 2077066450

REASON FOR ADJUSTMENT
 NON-INHER CURR-DIVER CR*

-- AS BILLED ----- RE-BILLED--

AS BILLED ----- RE-BILLED

-- AS BILLED-----RE-BILLED

SERVICE TO		SERVICE TO		SERVICE TO		SERVICE TO		
SERVICE FROM		SERVICE FROM		SERVICE FROM		SERVICE FROM		
RATE SCHED		RATE SCHED		RATE SCHED		RATE SCHED		
SERVICE DAYS		SERVICE DAYS		SERVICE DAYS		SERVICE DAYS		
S CRDT DAYS		S CRDT DAYS		S CRDT DAYS		S CRDT DAYS		
06/05/95	06/05/95	07/05/95	07/05/95	06/05/95	06/05/95	08/03/95	08/03/95	
05/04/95	05/04/95	06/05/95	06/05/95	07/05/95	07/05/95	07/05/95	07/05/95	
RS-1	RS-1	RS-1	RS-1	RS-1	RS-1	RS-1	RS-1	
32	32	30	30	29	29	29	29	
RDG	9276	9276	KWH RDG	10366	10366	KWH RDG	11117	11117
AND RDG			DEMAND RDG			DEMAND RDG		
KWH RDG			ON-PK KWH RDG			ON-PK KWH RDG		
DEM RDG			ON-PK DEM RDG			ON-PK DEM RDG		
KWH USED	986	2407	TOT KWH USED	1090	2945	TOT KWH USED	751	2971
USED			DEM USED			DEM USED		
PK USAGE			ON-PK USAGE			ON-PK USAGE		
DEMAND			ONP DEMAND			ONP DEMAND		
P KWH USED			OFFP KWH USED			OFFP KWH USED		
V AMT	70.70	175.24	SERV AMT	78.34	214.81	SERV AMT	53.42	216.74
CNTL CR	0.00	0.00	LD CNTL CR	0.00	0.00	LD CNTL CR	0.00	0.00
RCT TAX	.73	1.80	GR RCT TAX	.80	2.20	GR RCT TAX	.55	2.22
NC CHG	2.04	5.04	FRANC CHG	2.25	6.18	FRANC CHG	1.54	6.24
LITY TX	6.34	15.76	UTILITY TX	7.03	19.32	UTILITY TX	4.79	19.50
SLS TAX			FL SLS TAX			FL SLS TAX		
CNTL CR			PRE CNTL CR			PRE CNTL CR		
NSF CR			TRANSF CR			TRANSF CR		
TAIL CR			CURTAIL CR			CURTAIL CR		
ESS CHG								
GE CHG								
IM CHG								
ADJ								
DIFF								
TOTAL AMT	79.81	197.84	TOTAL AMT	88.42	242.51	TOTAL AMT	60.30	244.70
RECALCULATED AMOUNT	118.03		RECALCULATED AMOUNT	154.09		RECALCULATED AMOUNT	184.40	

CUSTOMER NAME AND SERVICE ADDRESS
 JUAN A RODRIGUEZ

BILL ACCT
 2077066450

REASON FOR ADJUSTMENT
 NON-INHER CURR-DIVER CR*

-- AS BILLED ----- RE-BILLED--

AS BILLED ----- RE-BILLED

-- AS BILLED-----RE-BILLED

12/04/95		12/04/95		12/07/95		12/07/95		01/09/96	
11/01/95		11/01/95		12/04/95		12/04/95		12/07/95	
RS-1		RS-1		RS-1		RS-1		RS-1	
33		33		3		3		33	
SERVICE TO		SERVICE TO		SERVICE TO		SERVICE TO		SERVICE TO	
SERVICE FROM		SERVICE FROM		SERVICE FROM		SERVICE FROM		SERVICE FROM	
RATE SCHED		RATE SCHED		RATE SCHED		RATE SCHED		RATE SCHED	
SERVICE DAYS		SERVICE DAYS		SERVICE DAYS		SERVICE DAYS		SERVICE DAYS	
LMIS CRDT DAYS		LMIS CRDT DAYS		LMIS CRDT DAYS		LMIS CRDT DAYS		LMIS CRDT DAYS	
KWH RDC	14581	KWH RDC	14581	KWH RDC	14662	KWH RDC	14662	KWH RDC	15575
DEMAND RDC		DEMAND RDC		DEMAND RDC		DEMAND RDC		DEMAND RDC	
ON- KWH RDC		ON-PK KWH RDC		ON-PK KWH RDC		ON-PK KWH RDC		ON-PK KWH RDC	
ON- DEM RDC		ON-PK DEM RDC		ON-PK DEM RDC		ON-PK DEM RDC		ON-PK DEM RDC	
TOT KWH USED	804	TOT KWH USED	2532	TOT KWH USED	81	TOT KWH USED	1963	TOT KWH USED	913
DEM IISED		DEM USED		DEM USED		DEM USED		DEM USED	
ON-PK USAGE		ON-PK USAGE		ON-PK USAGE		ON-PK USAGE		ON-PK USAGE	
ONP DEMAND		ONP DEMAND		ONP DEMAND		ONP DEMAND		ONP DEMAND	
OFFP KWH USED		OFFP KWH USED		OFFP KWH USED		OFFP KWH USED		OFFP KWH USED	
SERV AMT	59.82	SERV AMT	192.40	SERV AMT	6.03	SERV AMT	150.42	SERV AMT	68.20
LD CNTL CR	0.00	LD CNTL CR	0.00	LD CNTL CR	0.00	LD CNTL CR	0.00	LD CNTL CR	0.00
GR RCT TAX	.61	GR RCT TAX	1.97	GR RCT TAX	.06	GR RCT TAX	1.54	GR RCT TAX	.70
FRANC CHG	1.72	FRANC CHG	5.54	FRANC CHG	.17	FRANC CHG	4.33	FRANC CHG	1.96
UTILITY TX	5.38	UTILITY TX	17.35	UTILITY TX	.54	UTILITY TX	13.58	UTILITY TX	6.13
FL SLS TAX		FL SLS TAX		FL SLS TAX		FL SLS TAX		FL SLS TAX	
PRE CNTL CR		PRE CNTL CR		PRE CNTL CR		PRE CNTL CR		PRE CNTL CR	
TRANSF CR		TRANSF CR		TRANSF CR		TRANSF CR		TRANSF CR	
CURTAIL CR		CURTAIL CR		CURTAIL CR		CURTAIL CR		CURTAIL CR	
ACCESS CHG									
USAGE CHG									
ADMIN CHG									
TX/ ADJ									
REV DIFF									
TOTAL AMT	67.53	TOTAL AMT	217.26	TOTAL AMT	6.80	TOTAL AMT	169.87	TOTAL AMT	76.99
RECALCULATED AMOUNT	149.73	RECALCULATED AMOUNT	163.07	RECALCULATED AMOUNT	83.69				

CUSTOMER NAME AND SERVICE ADDRESS
JUAN A RODRIGUEZ

BILL ACCT
2077066450

REASON FOR ADJUSTMENT
NON-INHER CURR-DIVER CR*

-- AS BILLED ----- RE-BILLED--

SERVICE TO	02/08/96	02/08/96
SERVICE FROM	01/09/96	01/09/96
RATE SCHED	RS-1	RS-1
SERVICE DAYS	30	30
LMIS CRDT DAYS		

KWH RDG	16681	16681
DEMAND RDG		
ON- KWH RDG		
ON- DEM RDG		

TOT KWH USED	1106	1806
DEM USED		
ON-PK USAGE		
ONP DEMAND		
OFFP KWH USED		

SERV AMT	83.00	136.70
LD CNTL CR	0.00	0.00
GR RCT TAX	.85	1.40
FRANC CHG	2.39	3.93
UTILITY TX	7.47	12.32
FL SLS TAX		
PRE CNTL CR		
TRANSF CR		
CURTAIL CR		
ACCESS CHG		
USAGE CHG		
ADMIN CHG		
TX/ ADJ		
REV DIFF		

TOTAL AMT	93.71	154.35
	=====	=====

RECALCULATED AMOUNT	60.64
	=====

FPL

/ 27

810920770664504755697000

Please request changes on the back. Notes on the front will not be detected.

I added my donation for the Care to Share Energy Fund to help those in need. (Mark 'X' in box)

\$1 \$2 \$5 \$10 Other

178527

JUAN A RODRIGUEZ
3151 SW 84TH CT
MIAMI FL 33155

PLEASE FILL IN TOTAL AMOUNT PAID
\$
Dollars + Cents

Make check payable to FPL in U.S. and mail along with this coupon to:

FPL
GENERAL MAIL FACILITY
MIAMI FL 33188-0001

Account Number	Total Now Due	NEW Charges Past Due
20770-66450	\$7,965.57	APR 26 1996

FOLD ON PERFORATION BEFORE TEARING

CUSTOMER STATEMENT

Statement Date: APR 05 1996
Customer Name: JUAN A RODRIGUEZ
Service Address: 3151 SW 84 CT

Account Number: 20770-66450
Service Dates: APR 05 90 to FEB 05 96
Service Days: See message below
Next Scheduled Read Date: APR 08 1996

Previous Statement Balance	Payments (-)	Additional Activity (+ or -)	Balance Before NEW Charges (=)	NEW Charges (+)	NEW Charges Past Due	Total Now Due (=)
143.01	143.01CR	6,537.80CR	6,537.80CR	14,503.37	APR 26 1996	\$7,965.57

Multiple-Month Usage Meter No. 5C21125	
Total KWH	170,278

Account Activity

*CORRECTED BILLING

Previous Statement Balance 143.01
 Payment Received - THANK YOU 143.01CR
 Additional Activity:
 Credit 6,887.18CR
 Revenue Protection Invest Charge 349.38
BALANCE BEFORE NEW CHARGES 6,537.80

Billing for Electric Use on Rate: RS-1 RESIDENTIAL SERVICE

Electric Service Amount 12,840.20
 Gross Receipts Tax Increase 110.31
 Franchise Charge 419.36
 Utility Tax 1,133.50
Current Electric Charges 14,503.37

TOTAL NEW CHARGES: 14,503.37

TOTAL NOW DUE:

\$7,965.57

Messages

- A late payment charge of 1.5% will apply if not paid by APR 26.
- This bill is for multiple (70) billing periods. Details of each period are available on the attached report(s).
- Transactions involving connects, disconnects, name changes and payment extensions may require positive identification.
- Customers paying FPL bills at Authorized Pay Agent locations MUST have a bill statement when paying with a check.



Florida Power & Light Company
PO Box 025576
Miami, FL 33102



USEFUL TELEPHONE NUMBERS
Customer Service (305) 442-8770

METER READING HISTORY
 00770-58450 81 0N 333 ELE 401
 0044 4 00010002
 3151 SW 84TH CT
 MIAMI

PREMISE READINGS
 01730787 170447 5069584
 PH (305)228-1413 S
 S/1# 265-95-6564

03/14/96 14:57:20
 SPEC
 COIN

FL 33155 P 0L03A:81-06-333-19300-6
 KWH CONSTANT 1

PAGE 1 OF 3

READ DATE	TIME	KWH RDG	USAGE	DAYS	TYPE	STATUS	RPT CD	SEAL COND
03/08/96	09:59	00231	1675	29	A	B	H2	
02/29/96	00:00	00000	0	0	C	M		
02/29/96	00:00	18125	1444	21	D	M		
02/29/96	09:00	00000	0	0	J	M		
02/29/96	09:00	18125	0	0	J	M		
02/08/96	09:04	15681	1106	30	A	B		
01/09/96	09:28	15575	913	33	A	B		
12/07/95	09:28	14662	81	3	P	B		
12/04/95	08:47	14581	804	33	A	B		
11/01/95	08:25	13777	982	29	A	B		
10/03/95	08:47	12795	843	32	A	B		
09/01/95	09:26	11952	935	29	A	B		

LIST TYPE A FIND

004 10

TOP OF LIST

15-PAGE DOWN 15-BILL HIST 15-BY 84/PREN

NEW
 1997

3441 METER READING HISTORY
 0070-65450 81 09 333 ELE AC1
 0048 A 90041008Z
 8151 SW 84TH CT
 31941

PREMISE READINGS
 01/30/97 170447 5059684
 PH (305)225-1413 S
 S/1# 265-95-6564

03/14/96 14:57:20
 SPSC
 COIN

FL 33155 P OLD9A:81-06-333-19300-6

KWH CONSTANT 1
 KWH

PAGE 2 OF 3

READ DATE	TIME	RDG	USAGE	DAYS	TYPE	STATUS	CD	RPT SEAL	COND
08/03/95	08:25	11117	751	29	A	8			
07/05/95	08:30	10366	1090	30	A	8			
06/05/95	08:21	09276	986	32	A	8			
05/04/95	12:07	08090	810	29	A	8			
04/05/95	07:37	07480	676	29	A	8			
03/07/95	08:39	06804	1006	29	A	8			
02/06/95	08:45	05798	771	31	A	8			
01/06/95	09:30	05027	790	31	A	8			
12/06/94	08:55	04237	1158	33	A	8			
11/03/94	10:30	03079	740	30	A	8			
10/04/94	10:52	02339	1148	32	A	8			
09/02/94	09:05	01191	752	29	A	8	LI		

044 10

NET TYPE B 1190

02-PAGE LIST 07-PAGE UP 08-PAGE DOWN 15-BILL HIST 16-BY 84/95/96 NEWS FACT

METER READING HISTORY

20720-55450 81 09 333 ELE ACT
 JOHN W 200710027
 3151 SW 84TH CT
 MIAMI

PREMISE READINGS

01/30/87 1/044/ 5069684
 PH (305)226-1413
 S/T# 265-95-6564

03/14/98 14:57:20

SPEC

CDIN

FL 33155 P OLD8A:81-06-333-19300-6

KWH CONSTANT 1

PAGE 3 OF 3

READ DATE	TIME	KWH RDG	USAGE	DAYS	TYPE	STATUS	RPT CD	SEAL COND
03/04/94	09:06	00439	928	29	A	8	L1	
02/06/94	08:59	99511	1058	30	A	8		
01/06/94	09:53	98453	835	32	A	8		
12/05/94	09:22	97518	931	29	A	8		
11/06/94	09:02	96687	1067	29	A	9		

0001 TYPE 4 FIND

BOTTOM OF LIST

12-109 LIST 07-PAGE UP 15-BILL HIST 16-BY 24/985X

NEWS PAGE

BILLING HISTORY 03/14/96 14:57:41
 00770-00450 81 09 333 ELE ACT 01/30/87 170447 5069584
 JOHN R RODRIGUEZ PH (305)225-1413 S SPEC
 3151 SW 34TH CT S/IF# 265-95-6564 COIN
 MIAMI FL 33155 P 0L08A:81-06-333-19300-6

PAGE 1 OF 2

S	SVC DT	RM	DYS	T	S	KMH	KWD	ELE AMT	BB AMT	TOT BILL AMT
-	03/08/96	3	29	A	B	1675	0	143.01	0.00	143.01
-	02/08/96	2	30	A	B	1106	0	93.71	0.00	93.71
-	01/09/96	1	33	A	B	913	0	76.99	0.00	83.79 *
-	12/07/95	12	3	P	B	81	0	6.80	0.00	0.00
-	12/04/95	12	33	A	B	804	0	67.53	0.00	67.53
-	11/01/95	11	29	A	B	982	0	82.97	0.00	82.97
-	10/03/95	10	32	A	B	843	0	70.93	0.00	70.93
-	09/01/95	9	29	A	B	835	0	67.26	0.00	67.26
-	08/03/95	8	29	A	B	751	0	60.30	0.00	60.30
-	07/05/95	7	30	A	B	1090	0	88.42	0.00	88.42
-	06/05/95	6	32	A	B	986	0	79.81	0.00	79.81
-	05/04/95	5	29	A	B	810	0	65.17	0.00	65.17
-	04/05/95	4	29	A	B	676	0	54.90	0.00	54.90

LIST TYPE 4 FIND
 TOP OF LIST
 08-PAGE DOWN 13-NR00 HIST 16-PUS BKOWN 17-NI BILL 18-NR00/VERIFY NMR0
 9407

0191 BILLING HISTORY 03/14/96 14:57:41
 20770-55450 81 09 333 ELE ACT 01/30/97 170447 5059584
 0944 H 900R100EZ PN (305)225-1413 S 0700
 3151 SW 84TH CT S/1# 265-95-6564 001H
 MIAMI FL 33155 P 0L09A:81-05-333-19300-6

S	SVC DT	RM	DYS	T	S	KWH	KWD	ELE AMT	BB AMT	TOT BILL AMT
-	03/07/95	3	29	A	B	1096	0	80.69	0.00	80.69
-	02/06/95	2	31	A	B	771	0	61.35	0.00	61.35
-	01/06/95	1	31	A	B	790	0	62.92	0.00	62.92
-	12/06/94	12	33	A	B	1158	0	93.21	0.00	93.21
-	11/03/94	11	30	A	B	740	0	58.91	0.00	58.91
-	10/04/94	10	32	A	B	1143	0	92.39	0.00	92.39
-	09/02/94	9	29	A	B	752	0	59.59	0.00	59.59
-	08/04/94	8	29	A	B	928	0	74.04	0.00	74.04
-	07/06/94	7	30	A	B	1053	0	84.71	0.00	84.71
-	06/06/94	6	32	A	B	835	0	66.40	0.00	66.40
-	05/05/94	5	29	A	B	931	0	74.27	0.00	74.27

0001 TYPE 4 END 044 30
 BOTTOM OF LIST
 02-108 LIST 07-5485 UP 13-MR09 HIST 16-SUB 99X099 17-41 BILL NEWS
 18-7540/VERIFY FACT

5-21-96

FAX TO KATE SMITH

RE: 121439i

Rodriguez, Blanca

RE: JUAN RODRIGUEZ
3151 SW 84TH COURT
MIAMI, FL
FPSC NO: 96F1247

THIS IS IN RESPONSE TO THE FPSC'S QUESTION CONCERNING THE TIME FRAME BETWEEN THE LAST REGRESSIVE READING OBTAINED AND THE DAY THE NEW METER WAS INSTALLED.

DURING THE COURSE OF THIS INVESTIGATION, IT WAS DETERMINED THAT THIS ACCOUNT WAS SOMEHOW RELATED TO THREE OTHERS. THEY ARE AS FOLLOWS: 6550 SW 17 ST, 3250 SW 24 TER. #A, AND 7863 SW 5TH ST.

DUE TO THE NATURE OF THIS TYPE OF TAMPERING, IT WAS IMPORTANT THE INVESTIGATION BE COMPLETE ON ALL THE ACCOUNTS BEFORE THE NEW METERS WERE INSTALLED. THE REGRESSIVE READING FOR 6550 SW 17 STREET, WAS NOT OBTAINED UNTIL 2/13/96.

SINCE THESE ACCOUNTS WERE RELATED, IT WAS POSSIBLE IF ONE ACCOUNT WAS BILLED BEFORE THE OTHERS, HE/SHE WOULD THEN ALERT THEM AS TO THE INVESTIGATION POSSIBLY RESULTING IN THE DESTRUCTION OF EVIDENCE (METERS). FOR THAT REASON, THE METERS ON ALL THESE ACCOUNTS WERE CHANGED ON THE SAME DAY (FEBRUARY 29, 1996).

HELEN LUBERT
REVENUE PROTECTION

Rodriguez

TESTIMONY

Exhibits



Florida Power & Light Company
PO Box 025576
Miami, FL 33102

FPL

/ 27

8109207706645047556970000

2
4
6
8

Please request changes on
the back. Notes on the
front will not be detected.

3
5
7

I added my donation for the Care to Share Energy
Fund to help those in need. (Mark 'X' in box)

\$1 \$2 \$5 \$10 Other _____

178527

A I S 8109 4

PLEASE FILL IN TOTAL AMOUNT PAID
\$
Dollars • Cents

Make check payable to FPL in U.S. funds
and mail along with this coupon to:

JUAN A RODRIGUEZ
3151 SW 84TH CT
MIAMI FL 33155

FPL
GENERAL MAIL FACILITY
MIAMI FL 33188-0001

Account Number	Total Now Due	NEW Charges Past Due
20770-66450	\$7,965.57	APR 26 1996

FOLD ON PERFORATION BEFORE TEARING

CUSTOMER STATEMENT

Statement Date: APR 05 1996
Customer Name: JUAN A RODRIGUEZ
Service Address: 3151 SW 84 CT

Account Number: 20770-66450

Service Dates: APR 05 90 to FEB 08 96
Service Days: See message below
Next Scheduled Read Date: APR 08 1996

Previous Statement Balance	Payments (-)	Additional Activity (+ or -)	Balance Before NEW Charges (=)	NEW Charges (+)	NEW Charges Past Due	Total Now Due (=)
143.01	143.01CR	6,537.80CR	6,537.80CR	14,503.37	APR 26 1996	\$7,965.57

Multiple-Month Usage	
Meter No. 5C21125	
Total KWH	170,278

Account Activity

Previous Statement Balance 143.01
Payment Received - THANK YOU 143.01CR
Additional Activity:
Credit 6,887.18CR
Revenue Protection Invest Charge 349.38
BALANCE BEFORE NEW CHARGES 6,537.80CR
Billing for Electric Use on Rate: RS-1 RESIDENTIAL SERVICE
Electric Service Amount 12,840.20
Gross Receipts Tax Increase 110.31
Franchise Charge 419.36
Utility Tax 1,133.50
Current Electric Charges 14,503.37
TOTAL NEW CHARGES: 14,503.37

CORRECTED BILL

TOTAL NOW DUE:

\$7,965.57

Messages

- A late payment charge of 1.5% will apply if not paid by APR 26.
- This bill is for multiple (70) billing periods. Details of each period are available on the attached report(s).
- Transactions involving connects, disconnects, name changes and payment extensions may require positive identification.
- Customers paying FPL bills at Authorized Pay Agent locations MUST have a bill statement when paying with a check.



April 9, 1976

JUAN A RODRIGUEZ
3151 SW 84 CT
MIAMI, FL 33155

RE: Account No: 20770-86450
Case No.: 96A637341505

An inspection of the electric meter installation serving the above reference account has revealed an unauthorized condition. As a result, a portion of the electric service used did not record on the meter and was not part of your monthly bill.

Enclosed you will find the adjusted bill to cover the unmetered electric service and the cost associated with correcting the condition. This bill is due upon receipt.

The authority to backbill is provided in Commission Rule 25-6.104, Florida Administrative Code (FAC), which states,

"Unauthorized use of energy. In the event of unauthorized or fraudulent use or meter tampering, the utility may bill the customer on a reasonable estimate of the energy used."

Florida investor owned electric utilities are mandated under Florida Statute to charge backbilling for unmeasured electric energy according to rates filed in each utility's tariff approved by the FPSC Commission, Section 366.03, Florida Statutes, states, in part,

"...No public utility shall make or give any undue or unreasonable advantage to any person or locality, or subjects the same to any undue or unreasonable prejudice or disadvantage in any respect."

The electric meter in question has been tested for accuracy at the Florida Power & Light Test Center. Should you wish to obtain an independent meter test, you may do so at your expense. The meter will be retained for ninety days.

If you have any questions regarding the bill, please contact me between the hours of 7:30 A.M. and 4:00 P. M. at (305)552-2294 as collection action will be initiated within 30 days from this date. Failure to make arrangements for repayment will result in termination of the service.

Sincerely,

A handwritten signature in dark ink, appearing to read 'H. Lubert', written over a horizontal line.

H. LUBERT
Revenue Protection Investigator



FPL

Account No. 100123456

Account Name JOHN D. ROY 810-402

1234567890

Address 12345

Account No. 20770-4012

Case No. 36A6J241000

In inspection of the electric meter installed at your premises, we have determined that the meter is in satisfactory condition. As a result, a portion of your bill has been adjusted to reflect the correct amount of your monthly bill.

Enclosed you will find the adjusted bill for the month of [Month]. We apologize for the inconvenience caused by this condition. This bill is due upon receipt.

The authority to backbill is provided by the Public Utility Code (PUC), which states:

Unauthorized use of energy

...including the use of energy for

Unauthorized use of energy

Unauthorized use of energy

Unauthorized use of energy

Customer Center
will be

[Signature]

J. ROBERT
Revenue Protection Investigator

Cambio Relojes...

METER change.

FOLD ON PERFORATION BEFORE TEARING

CUSTOMER STATEMENT

Statement Date: MAR 08 1996
 Customer Name: JUAN A RODRIGUEZ
 Service Address: 3151 SW 84 CT

Account Number: 20770-66450

Service Dates: FEB 08 96 to MAR 08 96
 Service Days: 29
 Next Scheduled Read Date: APR 08 1996

Previous Statement Balance	Payments (+)	Additional Activity (+ or -)	Balance Before NEW Charges (=)	NEW Charges (+)	NEW Charges Past Due	Total Now Due (=)
93.71	93.71CR	0.00	0.00	143.01	MAR 29 1996	\$143.01

Meter Reading-Meter 5C09684

Current Reading 00231

---METER CHANGE---

KWH Used 1675

Energy Usage

	Last Year	This Year
KWH This Month	1006	1675
Service Days	29	29
KWH/Day	35	58

Account Activity

Previous Statement Balance	93.71
Payment Received - THANK YOU	93.71CR
Billing for Electric Use on Rate: RS-1 RESIDENTIAL SERVICE	
Electric Service Amount	126.65**
Gross Receipts Tax Increase	1.30
Franchise Charge	3.65
Utility Tax	11.41
Current Electric Charges	143.01

****Amt includes the following charges:**


Customer Charge:	\$5.65 per Month
Non-Fuel Energy Charge:	
First 750 KWH	\$0.04899 per KWH
Over 750 KWH	\$0.05899 per KWH
Fuel Charge:	\$0.01773 per KWH

TOTAL NOW DUE:

\$143.01

Messages

- A late payment charge of 1.5% will apply if not paid by MAR 29.
- Transactions involving connects, disconnects, name changes and payment extensions may require positive identification.
- Work safely outdoors. Stay clear of power lines when trimming trees or using ladders or other equipment. If you cannot avoid a power line do not do the work.

 Florida Power & Light Company
 PO Box 025576
 Miami, FL 33102



USEFUL TELEPHONE NUMBERS
 Customer Service: (305) 442-8770
 Hearing/Speech Impaired: 1-800-432-6554 (TTY/TDD)

FPL

FOLD ON PERFORATION BEFORE TEARING

CUSTOMER STATEMENT

Statement Date: MAR 19 1996
 Customer Name: FRANCISCO ME
 Service Address: 7863 SW 5 ST

Account Number: 85244-79519

Service Dates: FEB 19 96 to MAR 19 96
 Service Days: 29
 Next Scheduled Re date: APR 17 1996

Previous Statement Balance	Payments (-)	Additional Activity (+ or -)	Balance Before NEW Charges (=)	NEW Charges (+)	NEW Charges Past Due	Total Now Due (=)
72.14	72.14CR	0.00	0.00	102.63	APR 09 1996	\$102.63

Meter Reading-Meter 5C69682

Current Reading **00408**

---METER CHANGE---

KWH Used **1209**

Energy Usage

	Last Year	This Year
KWH This Month	765	1209
Service Days	29	29
KWH/Day	26	42

Account Activity

Previous Statement Balance	72.14
Payment Received - THANK YOU	72.14CR
Billing for Electric Use on Rate: RS-1 RESIDENTIAL SERVICE	
Electric Service Amount	90.90**
Gross Receipts Tax Increase	0.93
Franchise Charge	2.62
Utility Tax	8.18
Current Electric Charges	102.63

****Amt includes the following charges:**

Customer Charge:	\$5.65 per Month
Non-Fuel Energy Charge:	
First 750 KWH	\$0.04899 per KWH
Over 750 KWH	\$0.05699 per KWH
Fuel Charge:	\$0.01773 per KWH

TOTAL NOW DUE:

\$102.63

Messages

- A late payment charge of 1.5% will apply if not paid by APR 09.
- Transactions involving connects, disconnects, name changes and payment extensions may require positive identification.
- Work safely outdoors. Stay clear of power lines when trimming trees or using ladders or other equipment. If you cannot avoid a power line do not do the work.



Florida Power & Light Company
 PO Box 025576
 Miami, FL 33102



USEFUL TELEPHONE NUMBERS
 Customer Service: (305) 442-8770
 Hearing/Speech Impaired: 1-800-432-6554 (TTY/TDD)

STATEMENT

Statement Date: MAR 13 1996
 Customer Name: JORGE MORAL
 Service Address: 6550 SW 17 ST

Account Number: 95149-66267
 Service Dates: FEB 13 96 to MAR 13 96
 Service Days: 29
 Next Scheduled Read Date: APR 11 1996

Previous Statement Balance	Payments (-)	Additional Activity (+ or -)	Balance Before NEW Charges (=)	NEW Charges (+)	NEW Charges Past Due	Total Now Due (=)
95.67	95.67CR	0.00	0.00	167.25	APR 03 1996	\$167.25

Meter Reading-Meter 5C69683

Current Reading 00546
 METER CHANGE
 KWH Used 1911
Energy Usage

	Last Year	This Year
KWH This Month	1024	1911
Service Days	29	29
KWH/Day	35	66

Account Activity

Previous Statement Balance 95.67
 Payment Received - THANK YOU 95.67CR
Billing for Electric Use on Rate: RS-1 RESIDENTIAL SERVICE
 Electric Service Amount 144.76**
 Gross Receipts Tax Increase 1.48
 Franchise Charge 7.89
 Utility Tax 13.12
 Current Electric Charges 167.25

****Amt includes the following charges:**

Customer Charge: \$5.65 per Month
 Non-Fuel Energy Charge:
 First 750 KWH \$0.04899 per KWH
 Over 750 KWH \$0.05899 per KWH
 Fuel Charge: \$0.01773 per KWH

TOTAL NOW DUE:**\$167.25****Messages**

- A late payment charge of 1.5% will apply if not paid by APR 03.
- Transactions involving connects, disconnects, name changes and payment extensions may require positive identification.
- Work safely outdoors. Stay clear of power lines when trimming trees or using ladders or other equipment. If you cannot avoid a power line do not do the work.



Florida Power & Light Company
 PO Box 025576
 Miami, FL 33102

FPL

USEFUL TELEPHONE NUMBERS
 Customer Service: (305) 442-8770
 Hearing/Speech Impaired: 1-800-432-6554 (TTY/TDD)

FOLD ON PERFORATION BEFORE TEARING

CUSTOMER STATEMENT

Statement Date: FEB 08 1996
 Customer Name: JUAN A RODRIGUEZ
 Service Address: 3151 SW 84 CT

Account Number: 20770-66450

Service Dates: JAN 09 96 to FEB 08 96
 Service Days: 30
 Next Scheduled Read Date: MAR 08 1996

Previous Statement Balance	Payments (-)	Additional Activity (+ or -)	Balance Before NEW Charges (=)	NEW Charges (+)	NEW Charges Past Due	Total Now Due (=)
83.79	83.79CR	0.00	0.00	93.71	FEB 29 1996	\$93.71

Meter Reading-Meter 5C21125

Current Reading **16681**
 Previous Reading **-15575**
 KWH Used **1106**

Energy Usage

	Last Year	This Year
KWH This Month	771	1106
Service Days	31	30
KWH/Day	25	37

Account Activity

Previous Statement Balance **83.79**
 Payment Received - THANK YOU **83.79CR**
Billing for Electric Use on Rate: RS-1 RESIDENTIAL SERVICE
 Electric Service Amount **83.00****
 Gross Receipts Tax Increase **0.85**
 Franchise Charge **2.39**
 Utility Tax **7.47**
Current Electric Charges 93.71

***Amt includes the following charges:**

Customer Charge: \$5.65 per Month
 Non-Fuel Energy Charge:
 First 750 KWH \$0.04889 per KWH
 Over 750 KWH \$0.05889 per KWH
 Fuel Charge: \$0.0773 per KWH

TOTAL NOW DUE:

\$93.71

Messages

- A late payment charge of 1.5% will apply if not paid by FEB 29
- Transactions involving connects, disconnects, name changes and payment extensions may require positive identification.
- Contributing to Care to Share provides energy assistance to the less fortunate. Please check the appropriate box in the upper right-hand corner, then add the amount to your FPL bill payment.



Florida Power & Light Company
 PO Box 025576
 Miami, FL 33102



USEFUL TELEPHONE NUMBERS
 Customer Service: (305) 442-8770
 Hearing/Speech Impaired: 1-800-432-6554 (TTY/TDD)

FOLD ON PERFORATION BEFORE TEARING

CUSTOMER STATEMENT

Statement Date: FEB 08 1996
 Customer Name: JUAN A RODRIGUEZ
 Service Address: 3151 SW 84 CT

Account Number: 20770-66450

Service Dates: JAN 09 96 to FEB 08 96
 Service Days: 30
 Next Scheduled Read Date: MAR 08 1996

Previous Statement Balance	Payments (-)	Additional Activity (+ or -)	Balance Before NEW Charges (-)	NEW Charges (+)	NEW Charges Past Due	Total Now Due (=)
83.79	83.79CR	0.00	0.00	93.71	FEB 29 1996	\$93.71

Meter Reading-Meter 5C21125

Current Reading 16981
 Previous Reading -15575
 KWH Used 1106

Energy Usage

	Last Year	This Year
KWH This Month	771	1106
Service Days	31	30
KWH/Day	25	37

Account Activity

Previous Statement Balance 83.79
 Payment Received - THANK YOU 83.79CR

Billing for Electric Use on Rate: RS-1 RESIDENTIAL SERVICE

Electric Service Amount 83.00**
 Gross Receipts Tax Increase 0.85
 Franchise Charge 2.39
 Utility Tax 7.47

Current Electric Charges \$3.71

TOTAL NOW DUE:

\$93.71

****Amt includes the following charges:**

Customer Charge: \$5.65 per Month
 Non-Fuel Energy Charge:
 First 750 KWH \$0.04899 per KWH
 Over 750 KWH \$0.05899 per KWH
 Fuel Charge: \$0.01773 per KWH

Messages

- A late payment charge of 1.5% will apply if not paid by FEB 29
- Transactions involving connects, disconnects, name changes and payment extensions may require positive identification.
- Contributing to Care to Share provides energy assistance to the less fortunate. Please check the appropriate box in the upper right-hand corner, then add the amount to your FPL bill payment.



Florida Power & Light Company
 PO Box 025576
 Miami, FL 33102



USEFUL TELEPHONE NUMBERS

Customer Service: (305) 442-8770
 Hearing/Speech Impaired: 1-800-432-6554 (TTY/TDD)

*This year 1996
 From JAN/96 to JUL/96*

FOLD ON PERFORATION BEFORE TEARING

CUSTOMER STATEMENT

Statement Date: MAR 08 1998
 Customer Name: JUAN A RODRIGUEZ
 Service Address: 3151 SW 84 CT

Account Number: 20770-66450

Service Dates: FEB 08 98 to MAR 08 98
 Service Days: 29
 Next Scheduled Read Date: APR 08 1998

Previous Statement Balance	Payments (-)	Additional Activity (+ or -)	Balance Before NEW Charges (=)	NEW Charges (+)	NEW Charges Past Due	Total Now Due (=)
93.71	93.71CR	0.00	0.00	143.01	MAR 29 1998	\$143.01

Meter Reading-Meter 5C89884

Current Reading 00231

METER CHANGE

KWH Used 1675

Energy Usage

	Last Year	This Year
KWH This Month	1006	1675
Service Days	29	29
KWH/Day	35	58

Account Activity

Previous Statement Balance 93.71
 Payment Received - THANK YOU 93.71CR

Billing for Electric Use on Rate: RS-1 RESIDENTIAL SERVICE

Electric Service Amount 126.65**
 Gross Receipts Tax Increase 1.30
 Franchise Charge 3.65
 Utility Tax 11.41
Current Electric Charges 143.01

TOTAL NOW DUE:

\$143.01

****Amt includes the following charges:**

Customer Charge: \$5.65 per Month
 Non-Fuel Energy Charge:
 First 750 KWH \$0.04899 per KWH
 Over 750 KWH \$0.05999 per KWH
 Fuel Charge: \$0.01773 per KWH

Messages

- A late payment charge of 1.5% will apply if not paid by MAR 29.
- Transactions involving connects, disconnects, name changes and payment extensions may require positive identification.
- Work safely outdoors. Stay clear of power lines when trimming trees or using ladders or other equipment. If you cannot avoid a power line do not do the work.



Florida Power & Light Company
 PO Box 025576
 Miami, FL 33102

FPL



USEFUL TELEPHONE NUMBERS

Customer Service: (305) 442-8770
 Hearing/Speech Impaired: 1-800-432-6554 (TTY/TDD)

FOLD ON PERFORATION BEFORE TEARING

CUSTOMER STATEMENT

Statement Date: JUN 06 1996
 Customer Name: JUAN A RODRIGUEZ
 Service Address: 3151 SW 84 CT

Account Number: 20770-66450

Service Dates: MAY 07 96 to JUN 06 96
 Service Days: 30
 Next Scheduled Read Date: JUL 06 1996

Previous Statement Balance	Payments (-)	Additional Activity (+ or -)	Balance Before NEW Charges (=)	NEW Charges (+)	NEW Charges Past Due	Total Now Due (=)
8,037.78	72.21CR	0.00	7,965.57	69.26	JUN 27 1996	\$8,034.83

Meter Reading-Meter 5C69684

Current Reading 02868
 Previous Reading -02041
 KWH Used 827

Energy Usage

	Last Year	This Year
KWH This Month	2407	827
Service Days	32	30
KWH/Day	75	28

****Amt includes the following charges:**

Customer Charge: \$5.65 per Month
 Non-Fuel Energy Charge:
 First 750 KWH \$0.04597 per KWH
 Over 750 KWH \$0.05597 per KWH
 Fuel Charge: \$0.02075 per KWH

Account Activity

Previous Statement Balance 8,037.78
 Payment Received - THANK YOU 72.21CR
BALANCE BEFORE NEW CHARGES 7,965.57

Billing for Electric Use on Rate: RS-1 RESIDENTIAL SERVICE

Electric Service Amount 61.60**
 Gross Receipts Tax Increase 0.63
 Franchise Charge 1.75
 Utility Tax 5.28
Current Electric Charges 69.26

TOTAL NEW CHARGES: 69.26

TOTAL NOW DUE: \$8,034.83

Messages

- Did you forget? \$7,893.36 of this bill is past due. If payment has been made, we thank you and apologize for this reminder.
- A late payment charge of 1.5% will apply if not paid by JUN 27.
- Transactions involving connects, disconnects, name changes and payment extensions may require positive identification.
- Work safely outdoors. Stay clear of power lines when trimming trees or using ladders or other equipment. If you cannot avoid a power line do not do the work.



Florida Power & Light Company
 PO Box 025576
 Miami, FL 33102



USEFUL TELEPHONE NUMBERS

Customer Service: (305) 442-6032
 Hearing/Speech Impaired: 1-800-432-6554 (TTY/TDD)

FOLD ON PERFORATION BEFORE TEARING

CUSTOMER STATEMENT

Statement Date: MAY 17 1996
 Customer Name: JUAN A RODRIGUEZ
 Service Address: 3151 SW 84 CT

Account Number: 20770-66450

Service Dates: APR 08 96 to MAY 07 96
 Service Days: 29
 Next Scheduled Read Date: JUN 06 1996

Previous Statement Balance	Payments (-)	Additional Activity (+ or -)	Balance Before NEW Charges (=)	NEW Charges (+)	NEW Charges Past Due	Total Now Due (=)
8,108.62	0.00	143.05CR	7,965.57	72.21	JUN 07 1996	\$8,037.78

Meter Reading-Meter 5C69884

Current Reading	02041	
KWH Used	861	
Energy Usage	Last Year	This Year
KWH This Month	1940	881
Service Days	29	29
KWH/Day	67	30

****Amt includes the following charges:**

Customer Charge:	\$5.65 per Month
Non-Fuel Energy Charge:	
First 750 KWH	\$0.04597 per KWH
Over 750 KWH	\$0.05597 per KWH
Fuel Charge:	\$0.02075 per KWH

Account Activity

Previous Statement Balance	8,108.62	
Additional Activity:		
Credit		143.05CR
BALANCE BEFORE NEW CHARGES		7,965.57
Billing for Electric Use on Rate: RS-1 RESIDENTIAL SERVICE		
Electric Service Amount	64.21**	
Gross Receipts Tax Increase	0.66	
Franchise Charge	1.83	
Utility Tax	5.51	
Current Electric Charges		72.21
TOTAL NEW CHARGES:		72.21
TOTAL NOW DUE:		\$8,037.78

CORRECTED BILL

Messages

- A late payment charge of 1.5% will apply if not paid by JUN 07.
- The TOTAL NOW DUE includes an amount covered by a short-term payment arrangement. Please pay by the agreed-upon date.
- Transactions involving connects, disconnects, name changes and payment extensions may require positive identification.
- When reporting a street or outdoor light outage, please try to obtain the 11-digit number mounted at eye level on the pole; then call the number at the bottom of your bill for servicing.



Florida Power & Light Company
 PO Box 025576
 Miami, FL 33102



USEFUL TELEPHONE NUMBERS
 Customer Service: (305) 442-8770
 Hearing/Speech Impaired: 1-800-432-6554 (TTY/TDD)

FOLD ON PERFORATION BEFORE TEARING

CUSTOMER STATEMENT

Statement Date: APR 08 1996
 Customer Name: JUAN A RODRIGUEZ
 Service Address: 3151 SW 84 CT

Account Number: 20770-66450

Service Dates: MAR 08 96 to APR 08 96
 Service Days: 31
 Next Scheduled Read Date: MAY 07 1996

Previous Statement Balance	Payments (-)	Additional Activity (+ or -)	Balance Before NEW Charges (=)	NEW Charges (+)	NEW Charges Past Due	Total Now Due (=)
7,965.57	0.00	0.00	7,965.57	79.70	APR 29 1996	\$8,045.27

Meter Reading-Meter 5C69684

Current Reading 01179
 Previous Reading -00231
 KWH Used 048

Energy Usage

	Last Year	This Year
KWH This Month	1739	048
Service Days	29	31
KWH/Day	60	31

***Amt includes the following charges:**

Customer Charge:	\$5.65 per Month
Non-Fuel Energy Charge:	
First 750 KWH	\$0.04587 per KWH
Over 750 KWH	\$0.05587 per KWH
Fuel Charge:	\$0.02075 per KWH

Account Activity

Previous Statement Balance	7,965.57	
BALANCE BEFORE NEW CHARGES		7,965.57
Billing for Electric Use on Rate: RS-1 RESIDENTIAL SERVICE		
Electric Service Amount	70.87**	
Gross Receipts Tax Increase	0.73	
Franchise Charge	2.02	
Utility Tax	6.08	
Current Electric Charges		79.70
TOTAL NEW CHARGES:		79.70

TOTAL NOW DUE:

\$8,045.27

Messages

- A late payment charge of 1.5% will apply if not paid by APR 29.
- Transactions involving connects, disconnects, name changes and payment extensions may require positive identification.
- Customers paying FPL bills at Authorized Pay Agent locations **MUST** have a bill statement when paying with a check.



Florida Power & Light Company
 PO Box 025576
 Miami, FL 33102



USEFUL TELEPHONE NUMBERS
 Customer Service: (305) 442-8770
 Hearing/Speech Impaired: 1-800-432-6554 (TTY/TDD)

FOLD ON PERFORATION BEFORE TEARING

CUSTOMER STATEMENT

Statement Date: JUL 08 1996
 Customer Name: JUAN A RODRIGUEZ
 Service Address: 3151 SW 84 CT

Account Number: 20770-66450

Service Dates: JUN 08 96 to JUL 08 96
 Service Days: 32
 Next Scheduled Read Date: AUG 06 1996

Previous Statement Balance	Payments (-)	Additional Activity (+ or -)	Balance Before NEW Charges (=)	NEW Charges (+)	NEW Charges Past Due	Total Now Due (=)
8,034.83	69.26CR	0.00	7,965.57	75.88	JUL 29 1996	\$8,041.45

Meter Reading-Meter 5C89684

Current Reading 03768
 Previous Reading ~~-02868~~
 KWH Used 890

Energy Usage

	Last Year	This Year
KWH This Month	2945	890
Service Days	30	32
KWH/Day	98	28

***Amt includes the following charges:**

Customer Charge:	\$5.65 per Month
Non-Fuel Energy Charge:	
First 750 KWH	\$0.04597 per KWH
Over 750 KWH	\$0.05597 per KWH
Fuel Charge:	\$0.02205 per KWH

Account Activity

Previous Statement Balance 8,034.83
 Payment Received - THANK YOU 69.26CR
BALANCE BEFORE NEW CHARGES 7,965.57

Billing for Electric Use on Rate: RS-1 RESIDENTIAL SERVICE

Electric Service Amount 67.57**
 Gross Receipts Tax Increase 0.69
 Franchise Charge 1.92
 Utility Tax 5.70

Current Electric Charges 75.88

TOTAL NEW CHARGES: 75.88

TOTAL NOW DUE: \$8,041.45

Messages

- A late payment charge of 1.5% will apply if not paid by JUL 29.
- The FPSC has approved an increase in the fuel charge. Beginning June 27 through Sept. 1996, a typical 1,000 kWh residential bill will be \$76.95.
- The TOTAL NOW DUE includes an amount covered by a short-term payment arrangement. Please pay by the agreed-upon date.
- Transactions involving connects, disconnects, name changes and payment extensions may require positive identification.



Florida Power & Light Company
 PO Box 025576
 Miami, FL 33102



USEFUL TELEPHONE NUMBERS
 Customer Service: (305) 442-8770
 Hearing/Speech Impaired: 1-800-432-6554 (TTY/TDD)

FPL

LAST YEAR

JAN/95 to JAN/96



Customer Copy

Fold On Perforation Before Tearing

Please notify FPL of any changes in the customer name or rate class/type of usage (Example: Residential VS. Non-Residential).

Date Of This Statement	New Charges Past Due After	Total Amount Now Due
G JAN 6 95	JAN 27 95	6292

Customer Name	Service Address	Account Number	Meter No.
JUAN A RODRIGUEZ	3151 SM 84 CT	2077066450	5C21125

Rate Schedule/Class Of Service	Service Used		# Of Days	Meter Readings		Kilowatt Hours Used	Amount
	From	To		Previous	Current		
RS-1 RESIDENTIAL	DEC 6	JAN 6	31	04237	05027	790	5561**

GROSS RCPTS TAX INCR 57
 FRANCHISE CHARGE 162
 UTILITY TAX 512

LATE PAYMENT CHARGE OF 1.5% WILL APPLY IF NOT PAID BY JAN 27
WORK SAFELY OUTDOORS. STAY AT LEAST TEN FEET CLEAR OF POWER LINES WHEN TRIMMING TREES OR USING LADDERS OR OTHER EQUIPMENT. IF YOU CANNOT AVOID A POWER LINE, DO NOT DO THE WORK.

Total Amount Now Due ► 6292

Energy Usage Information			**Electric Service Amount Includes The Following Charges:				
KWH Used This Month	Days	KWH Per Day	Customer Charge	Non-Fuel Energy Charges		Fuel Charge	Demand Charge
This Year: 79031		25	565	4703	1ST 750	1570	
Last Year: 129231		42		5703 OVER 750			
			Dollars Per Month	Cents Per KWH		Cents Per KWH	Dollars Per KWH

1160 2077066450 8106
 For Customer Service inquiries or pay agent locations, call: (305)442-8770
 For Hearing / Speech Impaired
 Call (TTY/TDD) 1-800-432-6554.



Customer Copy

Fold On Perforation Before Tearing

Please notify FPL of any changes in the customer name or rate class/type of usage (Example: Residential VS. Non-Residential).

Date Of This Statement	New Charges Past Due After	Total Amount Now Due
G FEB 6 95	FEB 27 95	6135

Customer Name	Service Address	Account Number	Meter No.
JUAN A RODRIGUEZ	3151 SM 84 CT	2077066450	5C21125
Rate Schedule/Class Of Service	Service Used From	To	# Of Days
RS-1 RESIDENTIAL	JAN 6	FEB 6	31
	Meter Reading Previous	Current	Kilowatt Hours Used
	63105027	05798	771
			Amount
			5422**

GROSS RCPTS TAX INCR 56
 FRANCHISE CHARGE 158
 UTILITY TAX 499

LATE PAYMENT CHARGE OF 1.5% WILL APPLY IF NOT PAID BY FEB 27
LET FPL HELP YOU SAVE ENERGY DOLLARS. FIND OUT HOW YOU CAN HAVE A FREE HOME ENERGY SURVEY DONE FOR YOUR HOME BY READING THE FEB. ISSUE OF FPL ENERGY NEWS, ENCLOSED WITH YOUR BILL.

Total Amount Now Due ► **6135**

Energy Usage Information			**Electric Service Amount Includes The Following Charges:				
KWH Used This Month	Days	KWH Per Day	Customer Charge	Non-Fuel Energy Charges		Fuel Charge	Demand Charge
This Year	77131	25	565	4703	1ST 750	1570	
Last Year	99829	34		5703	OVER 750		
			Dollars Per Month	Cents Per KWH		Cents Per KWH	Dollars Per KWH

1160 2077066450 8106
 For Customer Service inquiries or pay agent locations, call: (305)442-8770
 For Hearing / Speech Impaired
 Call (TTY/TDD) 1-800-432-6554.



Customer Copy

Please notify FPL of any changes in the customer name or rate class/type of usage (Example: Residential VS. Non-Residential).

Fold On Perforation Before Tearing

Date Of This Statement		New Charges Past Due After		Total Amount Now Due	
G MAR 7 95		MAR 28 95		8069	
Customer Name			Service Address		
JUAN A RODRIGUEZ			3151 SM 84 CT		
Rate Schedule/Class Of Service			Service Used From		Amount
RS-1 RESIDENTIAL			FEB 6 MAR		7131**
			To	# Of Days	
				729	
			Motor Readings Previous		
			0579806804		
			Current		
			Kilowatt Hours Used		1006
			Account Number		2077066450
			Meter No.		5C21125

GROSS RCPTS TAX INCR	73
FRANCHISE CHARGE	208
UTILITY TAX	657

LATE PAYMENT CHARGE OF 1.5% WILL APPLY IF NOT PAID BY MAR 28
WORK SAFELY OUTDOORS. STAY CLEAR OF POWER LINES WHEN TRIMMING TREES OR USING LADDERS OR OTHER EQUIPMENT. IF YOU CANNOT AVOID A POWER LINE, DO NOT DO THE WORK.

Total Amount Now Due ▶ **8069**

Energy Usage Information			**Electric Service Amount Includes The Following Charges:				
KWH Used This Month	Days	KWH Per Day	Customer Charge	Non-Fuel Energy Charges		Fuel Charge	Demand Charge
This Year	100629	35	565	4703	1ST 750	1570	
Last Year	106132	33		5703	OVER 750		
			Dollars Per Month	Cents Per KWH		Cents Per KWH	Dollars Per KWH

1160 2077066450 8106
 For Customer Service inquiries or pay agent locations, call: **(305)442-8770**
 For Hearing / Speech Impaired
 Call (TTY/TDD) 1-800-432-6554.



Customer Copy

Please notify FPL of any changes in the customer name or rate class/type of usage (Example: Residential VS. Non-Residential).

Fold On Perforation Before Tearing

Date Of This Statement	New Charges Past Due After	Total Amount Now Due
G APR 5 95	APR 26 95	5490

Customer Name	Service Address	Account Number	Meter No.
JUAN A RODRIGUEZ	3151 SM 84 CT	2077066450	5C21125
Rate Schedule/Class Of Service	Service Used From	To	# Of Days
RS-1 RESIDENTIAL	MAR 7	APR 7	529
	Meter Readings Previous	Current	Kilowatt Hours Used
	06804	07480	676
			Amount
			4863**

GROSS RCPTS TAX INCR 50
 FRANCHISE CHARGE 140
 UTILITY TAX 437

LATE PAYMENT CHARGE OF 1.5% WILL APPLY IF NOT PAID BY APR 26
THE FPSC HAS APPROVED AN INCREASE IN FUEL CHARGES FOR THE APRIL THROUGH SEPT. BILLING PERIOD. A TYPICAL 1,000 KWH RESIDENTIAL BILL WILL BE \$72.47, AN INCREASE OF 85 CENTS.

Total Amount Now Due ▶ 5490

Energy Usage Information			**Electric Service Amount Includes The Following Charges:				
KWH Used This Month	Days	KWH Per Day	Customer Charge	Non-Fuel Energy Charges		Fuel Charge	Demand Charge
This Year	67629	23	565	4610	1ST 750	1747	
Last Year	106729	37		5610	OVER 750		
			Dollars Per Month	Cents Per KWH		Cents Per KWH	Dollars Per KWH

1160 2077066450 8106
 For Customer Service inquiries or pay agent locations, call: (305)442-8770
 For Hearing / Speech Impaired
 Call (TTY/TDD) 1-800-432-6554.



Customer Copy

Fold On Perforation Before Tearing

Please notify FPL of any changes in the customer name or rate class/type of usage (Example: Residential VS. Non-Residential).

Date Of This Statement	New Charges Past Due After	Total Amount Now Due
G MAY 4 95	MAY 25 95	6517

Customer Name	Service Address	Account Number	Meter No.
JUAN A RODRIGUEZ	3151 SM 84 CT	2077066450	5C21125
Rate Schedule/Class Of Service	Service Used From	To	# Of Days
RS-1 RESIDENTIAL	APR 5	MAY 4	29
	Meter Readings Previous	Current	Kilowatt Hours Used
	42907480	08290	810
			Amount
			5774**

GROSS RCPTS TAX INCR 59
 FRANCHISE CHARGE 166
 UTILITY TAX 518

LATE PAYMENT CHARGE OF 1.5% WILL APPLY IF NOT PAID BY MAY 25
FPL MAY HELP YOU PAY FOR A NEW, HIGH-EFFICIENCY CENTRAL COOLING AND HEATING SYSTEM. CALL US AT 1-800-DIAL FPL, EXT. 40 FOR A FREE BROCHURE ON OUR COOLING AND HEATING DISCOUNT PROGRAM.

Total Amount Now Due ▶ 6517

Energy Usage Information			**Electric Service Amount includes The Following Charges:				
KWH Used This Month	Days	KWH Per Day	Customer Charge	Non-Fuel Energy Charges		Fuel Charge	Demand Charge
This Year	81029	28	565	4610	1ST 750	1747	
Last Year	93129	32	Dollars Per Month	5610	OVER 750	Cents Per KWH	Dollars Per KWH

1160 2077066450 8106
 For Customer Service inquiries or pay agent locations, call: (305)442-8770
 For Hearing / Speech Impaired Call (TTY/TDD) 1-800-432-6554.

CUSTOMER STATEMENT

Statement Date: JUN 05 1995
 Customer Name: JUAN A RODRIGUEZ
 Service Address: 3151 SW 84 CT

Account Number: 20770-66450

Service Dates: MAY 04 95 to JUN 05 95
 Service Days: 32
 Next Scheduled Read Date: JUL 05 1995

Previous Statement Balance	Payments (-)	Additional Activity (+ or -)	Balance Before NEW Charges (=)	NEW Charges (+)	NEW Charges Past Due	Total Now Due (=)
65.17	65.17CR	0.00	0.00	79.81	JUN 26 1995	\$79.81

Meter Reading-Meter 5C21125

Current Reading 09276
 Previous Reading -09290
 KWH Used 986

Energy Usage

	Last Year	This Year
KWH This Month	835	986
Service Days	32	32
KWH/Day	26	31

Account Activity

Previous Statement Balance 65.17
 Payment Received - THANK YOU 65.17CR
Billing for Electric Use on Rate: RS-1 RESIDENTIAL SERVICE
 Electric Service Amount 70.70**
 Gross Receipts Tax Increase 0.73
 Franchise Charge 2.04
 Utility Tax 6.34
 Current Electric Charges 79.81

****Amt includes the following charges:**

Customer Charge: \$5.65 per Month
 Non-Fuel Energy Charge:
 First 750 KWH \$0.04610 per KWH
 Over 750 KWH \$0.05610 per KWH
 Fuel Charge: \$0.01747 per KWH

TOTAL NOW DUE:

\$79.81

Messages

- Please see the enclosed insert for details about your new bill. We haven't changed the calculation, just made it easier to understand.
- A late payment charge of 1.5% will apply if not paid by JUN 26.
- Work and play safely outdoors. Stay clear of power lines when trimming trees or using ladders or other equipment. If you cannot avoid a power line, do not do the work.



Florida Power & Light Company
 PO Box 025576
 Miami, FL 33102

USEFUL TELEPHONE NUMBERS

Customer Service: (305) 442-8770
 Hearing/Speech Impaired: 1-800-432-6554 (TTY/TDD)

FOLD ON PERFORATION BEFORE TEARING

CUSTOMER STATEMENT

Statement Date: AUG 03 1995
 Customer Name: JUAN A RODRIGUEZ
 Service Address: 3151 SW 84 CT

Account Number: 20770-66450

Service Dates: JUL 05 95 to AUG 03 95
 Service Days: 29
 Next Scheduled Read Date: SEP 07 1995

Previous Statement Balance	Payments (-)	Additional Activity (+ or -)	Balance Before NEW Charges (=)	NEW Charges (+)	NEW Charges Past Due	Total Now Due (=)
88.42	88.42CR	0.00	0.00	60.30	AUG 24 1995	\$80.30

Meter Reading-Meter 5C21125

Current Reading 11117
 Previous Reading -10368
 KWH Used 751

Energy Usage

	Last Year	This Year
KWH This Month	928	751
Service Days	29	29
KWH/Day	32	26

Account Activity

Previous Statement Balance 88.42
 Payment Received - THANK YOU 88.42CR
Billing for Electric Use on Rate: RS-1 RESIDENTIAL SERVICE
 Electric Service Amount 53.42**
 Gross Receipts Tax Increase 0.55
 Franchise Charge 1.54
 Utility Tax 4.79
 Current Electric Charges 60.30

TOTAL NOW DUE:

\$60.30

*** Amt includes the following charges:**

Customer Charge: \$6.65 per Month
 Non-Fuel Energy Charge:
 First 750 KWH \$0.04610 per KWH
 Over 750 KWH \$0.05610 per KWH
 Fuel Charge: \$0.01747 per KWH

Messages

- A late payment charge of 1.5% will apply if not paid by AUG 24.
- Our records indicate you have paid your FPL account in an excellent manner. We appreciate your prompt payment.



Florida Power & Light Company
 PO Box 025576
 Miami, FL 33102

FPL



USEFUL TELEPHONE NUMBERS

Customer Service: (305) 442-8770
 Hearing/Speech Impaired: 1-800-432-6554 (TTY/TDD)

FOLD ON PERFORATION BEFORE TEARING

CUSTOMER STATEMENT

Statement Date: SEP 01 1995
 Customer Name: JUAN A RODRIGUEZ
 Service Address: 3151 SW 84 CT

Account Number: 20770-66450

Service Dates: AUG 03 95 to SEP 01 95
 Service Days: 29
 Next Scheduled Read Date: OCT 03 1995

Previous Statement Balance	Payments (-)	Additional Activity (+ or -)	Balance Before NEW Charges (=)	NEW Charges (+)	NEW Charges Past Due	Total Now Due (=)
60.30	60.30CR	0.00	0.00	67.26	SEP 22 1995	\$67.26

Meter Reading-Meter 5C21125

Current Reading 11952
 Previous Reading -11117
 KWH Used 835

Energy Usage

	Last Year	This Year
KWH This Month	752	835
Service Days	29	29
KWH/Day	26	29

Account Activity

Previous Statement Balance 60.30
 Payment Received - THANK YOU 60.30CR
Billing for Electric Use on Rate: RS-1 RESIDENTIAL SERVICE
 Electric Service Amount 59.59**
 Gross Receipts Tax Increase 0.61
 Franchise Charge 1.72
 Utility Tax 5.34
Current Electric Charges 67.26

TOTAL NOW DUE:

\$67.26

****Amt includes the following charges:**

Customer Charge: \$5.65 per Month
 Non-Fuel Energy Charge:
 First 750 KWH \$0.04610 per KWH
 Over 750 KWH \$0.05610 per KWH
 Fuel Charge: \$0.01747 per KWH

Messages

- A late payment charge of 1.5% will apply if not paid by SEP 22.
- Please work safely outdoors. Stay clear of power lines when trimming trees or using ladders or other materials and equipment. If you cannot avoid a power line, do not do the work.



Florida Power & Light Company
 PO Box 025576
 Miami, FL 33102



USEFUL TELEPHONE NUMBERS

Customer Service: (305) 442-8770
 Hearing/Speech Impaired: 1-800-432-6554 (TTY/TDD)

FOLD ON PERFORATION BEFORE TEARING

CUSTOMER STATEMENT

Statement Date: OCT 03 1995
 Customer Name: JUAN A RODRIGUEZ
 Service Address: 3151 SW 84 CT

Account Number: 20770-66450

Service Dates: SEP 01 95 to OCT 03 95
 Service Days: 32
 Next Scheduled Read Date: NOV 01 1995

Previous Statement Balance	Payments (-)	Additional Activity (+ or -)	Balance Before NEW Charges (=)	NEW Charges (+)	NEW Charges Past Due	Total Now Due (=)
67.26	67.26CR	0.00	0.00	70.93	OCT 24 1995	\$70.93

Meter Reading-Meter 5C21125

Current Reading 12786
 Previous Reading -11952
 KWH Used 843

Energy Usage

	Last Year	This Year
KWH This Month	1148	843
Service Days	32	32
KWH/Day	36	26

Account Activity

Previous Statement Balance 67.26
 Payment Received - THANK YOU 67.26CR

Billing for Electric Use on Rate: RS-1 RESIDENTIAL SERVICE

Electric Service Amount 62.83**
 Gross Receipts Tax Increase 0.64
 Franchise Charge 1.81
 Utility Tax 5.65
Current Electric Charges 70.93

****Amt includes the following charges:**

Customer Charge: \$5.65 per Month
 Non-Fuel Energy Charge:
 First 750 KWH \$0.04899 per KWH
 Over 750 KWH \$0.05899 per KWH
 Fuel Charge: \$0.01773 per KWH

TOTAL NOW DUE:

\$70.93

Messages

- A late payment charge of 1.5% will apply if not paid by OCT 24.
- The FPSC has approved an increase in winter fuel charges for FPL. From Sept. 28, 1995 through Mar. 28, 1996, a typical 1,000 kWh residential bill will be \$75.64, an increase of \$3.17.



Florida Power & Light Company
 PO Box 025576
 Miami, FL 33102



USEFUL TELEPHONE NUMBERS

Customer Service: (305) 442-8770
 Hearing/Speech Impaired: 1-800-432-6554 (TTY/TDD)

FOLD ON PERFORATION BEFORE TEARING

CUSTOMER STATEMENT

Statement Date: NOV 01 1995
 Customer Name: JUAN A RODRIGUEZ
 Service Address: 3151 SW 84 CT

Account Number: 20770-66450

Service Dates: OCT 03 95 to NOV 01 95
 Service Days: 29
 Next Scheduled Read Date: DEC 04 1995

Previous Statement Balance	Payments (-)	Additional Activity (+ or -)	Balance Before NEW Charges (=)	NEW Charges (-)	NEW Charges Past Due	Total Now Due (=)
70.93	70.93CR	0.00	0.00	82.97	NOV 22 1995	\$82.97

Meter Reading-Meter 5C21125

Current Reading 13777
 Previous Reading -12785
 KWH Used 982

Energy Usage

	Last Year	This Year
KWH This Month	740	982
Service Days	30	29
KWH/Day	25	34

***Amt includes the following charges:**

Customer Charge: \$5.65 per Month
 Non-Fuel Energy Charge:
 First 750 KWH \$0.04889 per KWH
 Over 750 KWH \$0.05899 per KWH
 Fuel Charge: \$0.01773 per KWH

Account Activity

Previous Statement Balance 70.93
 Payment Received - THANK YOU 70.93CR
 Billing for Electric Use on Rate: RS-1 RESIDENTIAL SERVICE
 Electric Service Amount 73.49**
 Gross Receipts Tax Increase 0.75
 Franchise Charge 2.12
 Utility Tax 6.61
 Current Electric Charges 82.97

TOTAL NOW DUE:**\$82.97****Messages**

- A late payment charge of 1.5% will apply if not paid by NOV 22.
- Save a stamp and the effort of going to the Post Office; E-Mail us at FPLCorrespondence@email.fpl.com
- Contributing to Care to Share provides energy assistance to the less fortunate. Check the appropriate box in the upper right-hand corner, then add the amount to your FPL bill payment.



Florida Power & Light Company
 PO Box 025576
 Miami, FL 33102

**USEFUL TELEPHONE NUMBERS:**

Customer Service: (305) 442-8770
 Hearing/Speech Impaired: 1-800-432-6554 (TTY/TDD)

FOLD ON PERFORATION BEFORE TEARING

CUSTOMER STATEMENT

Statement Date: DEC 04 1995
 Customer Name: JUAN A RODRIGUEZ
 Service Address: 3151 SW 84 CT

Account Number: 20770-66450

Service Dates: NOV 01 95 to DEC 04 95
 Service Days: 33
 Next Scheduled Read Date: JAN 05 1996

Previous Statement Balance	Payments (-)	Additional Activity (+ or -)	Balance Before NEW Charges (=)	NEW Charges (+)	NEW Charges Past Due	Total Now Due (=)
82.97	82.97CR	0.00	0.00	67.53	DEC 27 1995	\$67.53

Meter Reading-Meter 5C21125

Current Reading	14691
Previous Reading	-13777
KWH Used	804

Energy Usage

	Last Year	This Year
KWH This Month	1158	804
Service Days	33	33
KWH/Day	35	24

Account Activity

Previous Statement Balance	82.97
Payment Received - THANK YOU	82.97CR
Billing for Electric Use on Rate: RS-1 RESIDENTIAL SERVICE	
Electric Service Amount	59.82**
Gross Receipts Tax Increase	0.61
Franchise Charge	1.72
Utility Tax	5.38
Current Electric Charges	67.53

***Amt includes the following charges:**

Customer Charge:	\$5.65 per Month
Non-Fuel Energy Charge:	
First 750 KWH	\$0.04899 per KWH
Over 750 KWH	\$0.05899 per KWH
Fuel Charge:	\$0.01773 per KWH

TOTAL NOW DUE:

\$67.53

Messages

- A late payment charge of 1.5% will apply if not paid by DEC 27.
- To provide more efficient service, the billing date for your area will be changing. Watch your upcoming bills for the new billing date.
- From all of us at FPL, thank you for your business in 1995. Have a bright and happy holiday season and a safe new year.



Florida Power & Light Company
 PO Box 025576
 Miami, FL 33102



USEFUL TELEPHONE NUMBERS
 Customer Service: (305) 442-8770
 Hearing/Speech Impaired: 1-800-432-6554 (TTY/TDD)

FOLD ON PERFORATION BEFORE TEARING

CUSTOMER STATEMENT

Statement Date: JAN 09 1996
 Customer Name: JUAN A RODRIGUEZ
 Service Address: 3151 SW 84 CT

Account Number: 20770-66450

Service Dates: DEC 04 95 to JAN 09 96
 Service Days: 36
 Next Scheduled Read Date: FEB 08 1996

Previous Statement Balance	Payments (-)	Additional Activity (+ or -)	Balance Before NEW Charges (=)	NEW Charges (+)	NEW Charges Past Due	Total Now Due (=)
67.53	67.53CR	0.00	0.00	83.79	JAN 30 1996	\$83.79

Meter Reading-Meter 5C21125

Current Reading	15575
Previous Reading	-14581
KWH Used	994

Energy Usage

	Last Year	This Year
KWH This Month	790	994
Service Days	31	36
KWH/Day	25	28

Account Activity

Previous Statement Balance	67.53
Payment Received - THANK YOU	67.53CR
Billing for Electric Use on Rate: RS-1 RESIDENTIAL SERVICE	
Electric Service Amount	74.23
Gross Receipts Tax Increase	0.76
Franchise Charge	2.13
Utility Tax	6.67
Current Electric Charges	83.79

TOTAL NOW DUE:

\$83.79

Messages

- A late payment charge of 1.5% will apply if not paid by JAN 30.
- In order to provide more efficient service, the billing date for your area has been changed.
- This billing period is more than a month; bill factors are available upon request.
- Work safely outdoors. Stay clear of power lines when trimming trees or using ladders or other equipment. If you cannot avoid a power line, do not do the work.



Florida Power & Light Company
 PO Box 025576
 Miami, FL 33102

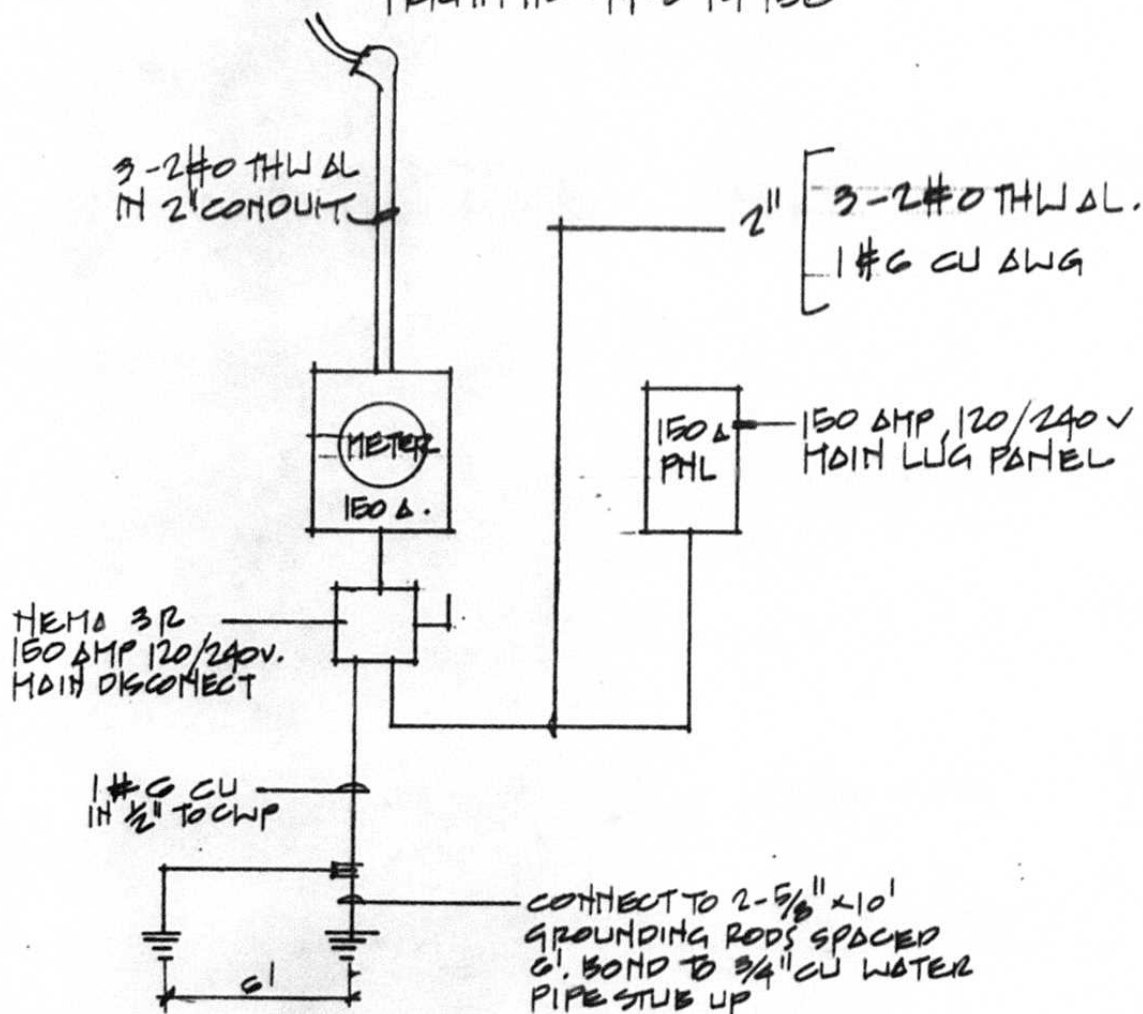


USEFUL TELEPHONE NUMBERS
 Customer Service: (305) 442-8770
 Hearing/Speech Impaired: 1-800-432-6554 (TTY/TDD)

ALBERTO RODRIGUEZ RES.

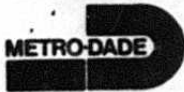
3151 SW 84 CT MIAMI, FL

PERMIT NO 94-094750



ELECTRICAL RISER NTS

JUAN ORDOÑEZ PE.
6531 SW 136 CT.



METROPOLITAN DADE COUNTY

BNZ PERMIT AND INSPECTION RECORD

05/02/94

PERMIT NO. 94-094750

PROCESS NO. C94138148

FOLIO: 3040150170140

JOB SITE ADDRESS 3151 SW 84 CT

REQUIRED INSPECTIONS

- BUILDING **001 FINAL**
- 02 SUB-GENERAL BLDR
 - ~~004 FOUNDATION~~
 - 006 SLAB
 - 027 MONOLITHIC SLAB
 - 005 TIE BEAM/REINFORCING
 - 3** 058 ROOF TRUSS/BRACING
 - 3** 065 SHEATHING
 - 3** 007 FRAMING/FIRE STOPPING WINDOWS
 - ~~008 LATHING/FIRE PROTECTION N/A~~
 - ~~004 ACCESSIBILITY INSPECTION~~
- 82 WINDOWS
 - 001 FINAL
- 95 ASPHALT (FIBERGLASS) SHINGLE ROOFS
 - 009 TIME OF INSTALLATION
 - 001 FINAL
- ELECTRICAL
 - 01 ELECTRICAL
 - 006 SLAB
 - 002 ROUGH - e-back
 - 001 FINAL
- PLUMBING
 - 01 PLUMBING
 - 015 GROUND ROUGH
 - ~~016 TOP SWF~~
 - 017 TUB & WATER PIPE
 - 018 SEWER AND/OR RELAY
 - ~~001 ROUGH~~
 - 001 FINAL
- MECHANICAL
 - 02 RM A/C INSTALL
 - 001 FINAL

INIT	DATE
INIT	10/17/94
INIT	5-9-94
INIT	6/27/94
INIT	6-15-94
INIT	6-20-94
INIT	6-28-94
INIT	8/22/94
INIT	8/22/94
INIT	8/11/94
INIT	8-10-94
INIT	10-5-94
INIT	5/24/94
INIT	5-5-94
INIT	5-8-94
INIT	12.23.10-6-94



Date: 3-1-88

Customer Name: JUAN A. RODRIGUEZ
Address: 315N 36W 84CT
City/State: _____

Re: Account No. 81-06-333-1930-6
File No. 88A0043

Dear: MR RODRIGUEZ

An inspection of the electric meter installation serving the above reference account has revealed an irregularity. As a result of this condition, a portion of the electric service used did not record on the meter and was not a part of your monthly bill.

Enclosed you will find the adjusted bill to cover the unmetered electric service.

If you have any questions regarding this bill, please contact me between 8:00 AM - 4:00 PM at 789-2055, as collection action will be initiated within 30 days from this date.

Sincerely,

H. Lubert
H. Lubert, C.D. Investigator

Encl.

FPL

JUAN A. RODRIGUEZ
3112 NW 84 ST
MIAMI FL 33148

March 28, 1988

Dear MR. RODRIGUEZ:

Pursuant to the payment arrangements agreed upon on MARCH 4, 1988, the \$ 23.00 that was additional billed due to a meter irregularity will be reimbursed to Florida Power & Light at the rate of an initial payment of \$ 86.79 and \$ 86.00 thereafter each month plus the current billing commencing with your MARCH 28, 1988 statement. These amounts will appear as past due charges on your current statement. Your payment plus the current charges should be paid prior to the past due date on your bill. Failure to maintain these arrangements will result in the entire billing becoming immediately due, and collection action will be taken.

If you have any further question concerning this matter, please contact Mr. LUBERT at 789-2055.

Sincerely,

H. Lubert
H. LUBERT

Bad Copy



PLEASE DO NOT WRITE IN THIS WHITE AREA

ADDRESS INQUIRIES TO:

BOX 025209 MIAMI FL 33102

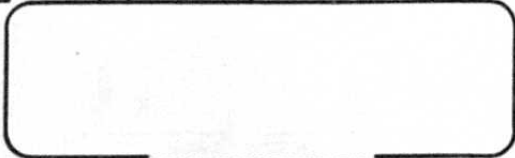
8106333193006 25879

JUAN A. RODRIGUEZ

3151 SW 84 CT

MIAMI FL 33155

ACCOUNT NUMBER 8106333193006	SERVICE TO	NEW CHARGES PAST DUE AFTER MAR. 29	TOTAL AMOUNT NOW DUE 25879
---------------------------------	------------	--	----------------------------------



MAIL PAYMENTS TO

PLEASE MAIL THIS PORTION WITH YOUR CHECK OR BRING ENTIRE BILL TO YOUR LOCAL FPL BUSINESS OFFICE OR COMMUNITY PAYSTATION. CALL FOR THE PAYSTATION LOCATION NEAREST YOU.
FOLD ON PERF BEFORE TEARING



BILLING STATEMENT-CUSTOMER COPY

PLEASE NOTIFY FPL OF ANY CHANGES IN THE CUSTOMER NAME OR RATE CLASS/TYPE OF USAGE (EXAMPLE: RESIDENTIAL VS. NON-RESIDENTIAL).

DATE OF THIS STATEMENT 2/29/88	NEW CHARGES PAST DUE AFTER 3/29/88	TOTAL AMOUNT NOW DUE 25879
-----------------------------------	---------------------------------------	-------------------------------

CUSTOMER NAME J. A. RODRIGUEZ		SERVICE ADDRESS 3151 SW 84 CT		ACCOUNT NUMBER 8106333193006	METER NO.
RATE SCHEDULE/CLASS OF SERVICE RS-1 RESIDENTIAL	SERVICE USED FROM TO	# OF MTS	METER READINGS PREVIOUS CURRENT	KILOWATT HOURS USED 789	AMOUNT 18 58 67
FRANCHISE CHARGE					2 38
CITY/COUNTY UTILITY TAX					4 86
CURRENT DIVERSION INVESTIGATION CHARGE					192 88
MI NUMBER 88A0043 BILLING DETAILS AVAILABLE UPON REQUEST H. LUBERT 789-2055					
TOTAL AMOUNT NOW DUE					258 79

ENERGY USAGE INFORMATION			**ELECTRIC SERVICE AMOUNT INCLUDES THE FOLLOWING CHARGES:			
KWH USED THIS MONTH	MTS	KWH PER DAY	CUSTOMER CHARGE	NON-FUEL ENERGY CHARGES	FUEL CHARGE	DEMAND CHARGE
THIS YEAR						
LAST YEAR			DOLLARS PER MONTH	CENTS PER KWH	CENTS PER KWH	DOLLARS PER KW

FPL OFFICE LOCATION
IF YOU HAVE ANY QUESTIONS OR REQUIRE ASSISTANCE, CALL OR VISIT ANY FPL BUSINESS OFFICE.
CALL FOR OTHER FPL CUSTOMER SERVICE LOCATIONS. SEE REVERSE SIDE FOR ADDITIONAL INFORMATION.

FPL PHONE NO.
FOR HEARING/SPEECH IMPAIRED
CALL (TTY/TDD) 1-800-432-4554.

PAN AMERICAN HOSPITAL

MIAMI, FLORIDA

PAGE 1

PATIENT: >RODRIGUEZ, JUAN A.

MR>111744

AD >10/23/67

DOCTOR: >ALAIN ZUBIZARRETA, M.D.

DD >10/28/67

CLINICAL RECORD

ADMITTING DIAGNOSIS:

1. ACUTE CHOLECYSTITIS.

HISTORY:

THE PATIENT IS A 33 YEARS OLD WHITE MALE WITH HIS FIRST ADMISSION TO THIS PAN AMERICAN HOSPITAL WHO WAS BROUGHT TO OUR EMERGENCY ROOM BECAUSE OF COMPLAINT OF ABDOMINAL PAIN OVER RIGHT UPPER QUADRANT, RADIATING TO BACK, ASSOCIATED TO NAUSEA, VOMITING, AND FEVER, SEVERAL HOURS EVOLUTION, WHY ADMITTED FOR FURTHER ASSESSMENT AND SURGICAL TREATMENT.

PLEASE REFER TO THE ADMISSION NOTE ON PATIENT'S CHART FOR A COMPLETE HISTORY AND PHYSICAL EXAMINATION.

A CONSULTATION WAS REQUESTED FROM DR. EDGAR NUNEZ-BAEZ. PLEASE REFER TO THE CONSULTATION REPORT.

LABORATORY WORK ON ADMISSION

CBC REVEALED A HEMOGLOBIN LEVEL OF 15.1 GRAMS PERCENT, HEMATOCRIT 45, WHITE BLOOD CELL COUNT 16,000, WITH A DIFFERENTIAL BLOOD COUNT SEGGS 83 PERCENT, BANDS 3 PERCENT, LYMPHOCYTES 12 PERCENT, MONOCYTES 2 PERCENT.

BLOOD SHEAR REVEALED ADEQUATE PLATELETS.

THE BIOCHEMICAL PROFILE WAS REPORTED WITHIN NORMAL LIMITS EXCEPT MODERATELY ELEVATED FASTING BLOOD GLUCOSE OF 117 MG PERCENT.

SERIAL FASTING BLOOD GLUCOSES REVEALED VALUES RANGING FROM 163

CONTINUED

PAN AMERICAN HOSPITAL
MIAMI, FLORIDA
PAGE 2

PATIENT: >RODRIGUEZ, JUAN A.

MR>111744

AD >10/23/87

DOCTOR: >ALAIN ZUBIZARRETA, M.D.

DD >10/28/87

CLINICAL RESUME

MG. PERCENT TO 100 MG. PERCENT.

EPR REPORTED NONREACTIVE.

PT AND PTT REPORTED WITHIN NORMAL LIMITS.

THE REMAINDER OF THE LABORATORY TESTS REPORTED ESSENTIALLY
NEGATIVE.

RADIOGRAPHIC STUDIES:

CT SCAN OF THE ABDOMEN PERFORMED WITHOUT ADMINISTRATION OF ORAL
OR INTRAVENOUS CONTRAST MEDIA REPORTED NONSPECIFIC.

GALLBLADDER SONOGRAM REPORTED ESSENTIALLY NEGATIVE.

HEPATOBIILIARY SCAN REPORTED UNREMARKABLE.

INTRAOPERATIVE CHOLANGIOGRAM REPORTED UNREMARKABLE.

CHEST PA AND LATERAL REPORTED ESSENTIALLY NEGATIVE.

FLAT ABDOMEN WAS REPORTED AS FOLLOWS: FINDINGS THAT COULD
REPRESENT AN APPENDICITIS IN THE RIGHT LOWER QUADRANT, OTHERWISE,
STUDY IS UNREMARKABLE.

EKG WAS REPORTED WITHIN NORMAL LIMITS.

HOSPITAL COURSE:

CONTINUED

PAN AMERICAN HOSPITAL

MIAMI, FLORIDA

PAGE 3

PATIENT: >RODRIGUEZ, JOAN A.

MR>111744

AD >10/23/87

DOCTOR: >ALAIN ZUBIZARRETA, M.D.

BD >10/28/87

CLINICAL RESUME

AFTER AN ADEQUATE PREOPERATIVE PREPARATION, THE PATIENT WAS SCHEDULED FOR SURGERY ON 10/24/87 AND THE FOLLOWING SURGICAL PROCEDURE WAS PERFORMED BY DR. EDGAR NUNEZ-BAEZ:

1. CHOLECYSTECTOMY
2. INTRAOPERATIVE CHOLANGIOGRAM REPORTED AS NEGATIVE.

THE SURGICAL PROCEDURE WAS WELL-TOLERATED BY THE PATIENT WHO LEFT THE OPERATING ROOM AND WAS TRANSFERRED TO THE RECOVERY ROOM IN GOOD AND STABLE CONDITION. PLEASE REFER TO THE OPERATIVE REPORT.

SURGICAL SPECIMEN WAS SUBMITTED TO PATHOLOGY. PLEASE REFER TO THE PATHOLOGY REPORT.

PREOPERATIVELY THE PATIENT WAS COVERED WITH:

1. ZANTAC 50 MG I.V. EVERY SIX HOURS.
2. MYLANTA TWO TABLESPOONS PO QID.

POSTOPERATIVELY THE PATIENT WAS COVERED WITH:

1. GARAMYCIN 80 MG I.V. EVERY EIGHT HOURS.
2. PREOPERATIVE MEDICATION WAS RESUMED.

BY 10/27/87 I.V. FLUID AND I.V. ANTIBIOTICS WERE DISCONTINUED, WAS STARTED ON AMPICILLIN 500 MG PO QID, REGLAN PO QID, ZANTAC 150 MG PO BID.

LATER AMPICILLIN WAS DISCONTINUED, AND WAS STARTED ON VIBRAMYCIN 100 MG PO EVERY TWELVE HOURS, GARAMYCIN WAS DECREASED TO 60 MG

CONTINUED

PAN AMERICAN HOSPITAL

MIAMI, FLORIDA

PAGE 4

PATIENT: >RODRIGUEZ, JUAN A.

MR>111744

AD >10/23/87

DOCTOR: >ALAIN ZUBIZARRETA, M.D.

DD >10/28/87

CLINICAL RESUME

I.M. EVERY EIGHT HOURS AND LATER WAS DISCONTINUED.

THE PATIENT CONTINUED STABLE AND IMPROVED AND WAS DISCHARGED HOME IN SATISFACTORY CONDITION ON 10/28/87 WITH:

FINAL DIAGNOSIS:

1. ACUTE CHOLECYSTITIS.
2. CHOLELITHIASIS.

WITH THE FOLLOWING MEDICATION TO BE TAKEN AT HOME:

DISCHARGE INSTRUCTIONS:

MEDICATIONS:

1. AMPICILLIN 500 MG PO EVERY TWELVE HOURS.
2. REGLAN ONE TABLET PO BID.
3. RESTORIL 30 MG ONE CAPSULE PO AT HOUR OF SOMNIA AND PRN.
4. DOLOBID 250 MG PO EVERY SIX HOURS AND PRN.

DIET:

SOFT DIET

PHYSICAL ACTIVITIES:

PHYSICAL ACTIVITY RESTRICTION FOR THE NEXT FOUR TO FIVE WEEKS.

CONDITION ON DISCHARGE:

IMPROVED

FOLLOWUP CARE:

THE RECOMMENDATION TO SEE ME IN MY OFFICE NEXT MONDAY FOR

CONTINUED

MEDICAL FIC NO. 1117449		PAN AMERICAN HOSPITAL 8050 NW 7th STREET, MIAMI, FL 33126				INPATIENT ADMISSION				PATIENT NO. 128769	
ADMISSION DATE 10/23/1987	ADMI TIME 01:40AM	DISCHARGE DATE 10/28/87	ADMISSION SOURCE X EO	TYPE S	ROOM NO. 0117-D	ACCOM	SERVICE SUR	ETHNIC H	MAJ. DISE H	RELIG CAT	SMOKING
PATIENT'S NAME (LAST, FIRST, MI) RODRIGUEZ, JUAN ALBERTO			MIDNEN NAME		DATE OF BIRTH 09/25/1954	AGE 33	PLACE OF BIRTH CUBA	SEX	SOCIAL SECURITY NO. M265-95-6564		
LOCAL ADDRESS (STREET, CITY, ZIP)											
PERMANENT OR MAILING ADDRESS IF DIFFERENT FROM LOCAL (STREET/P.O. BOX, CITY, STATE, ZIP) 3151 SW 84 COURT MIAMI FL 33155 305-227-6574											
PATIENT'S EMPLOYER CUEYAJUDGAG			EMPLOYER'S ADDRESS (STREET, CITY, STATE, ZIP) OPACKLOKA				EMPLOYER'S PHONE NO.				
NEXT OF KIN RODRIGUEZ, BLANCA		REL. TO PAT. 2	HOME TELEPHONE NO. 305-227-6574		BUSINESS TELEPHONE NO.						
ALTERNATE PERSON (NOT IF SAME ADDRESS) MORALES, CARMEN		REL. TO PAT. R	HOME TELEPHONE NO. 305-266-6787		BUSINESS TELEPHONE NO.						
ADMITTING PHYSICIAN ZUBIZARRETA, ALAIN		PHYS. CODE 301358	REV. ADM. DATE	ADMITTING DIAGNOSIS ACUTE CHOLECYSTITIS 575.0							
ELCS (CD FORM NO.)		MEDICARE-HEALTH INS. CARD NO.		H	M	MAO	MEDICAD NO.				
PRINCIPLE DIAGNOSIS (ICD-9-CM AFTER STUDY RESPONSIBLE FOR ADMISSION)											
① Acute cholecystitis										7 0	
② Cholelithiasis										3574.00	
OTHER DIAGNOSIS (AFFECTING LOS)											
Gallbladder										575.0	
cystic duct alterations										575.0	
COMPLICATIONS (IF ANY)											
PRINCIPLE PROCEDURE											
① Cholecystectomy										DATE 51.22	
② Operative cholangiogram										③ 87.93	
③ lysis of Gallbladder & cystic duct										④ 54.5	
Adhesion										88.01	
Scan abdomen 10-23										635 3070 10-23	
Hepatob. scan 10-23										928 82-9208	
CONDITION ON DISCHARGE: RECOVERED <input type="checkbox"/> IMPROVED <input checked="" type="checkbox"/> UNIMPROVED <input type="checkbox"/> EXPIRED <input type="checkbox"/> AUTOPSY: YES <input type="checkbox"/> NO <input type="checkbox"/> M.E. CASE <input type="checkbox"/> LAST RITES: YES <input type="checkbox"/> NO <input type="checkbox"/>											
ATTENDING PHYSICIAN <i>Alain Zubizarreta</i> M.D.											
DAYS IN HOSPITAL: CCU <input type="checkbox"/> ICU <input type="checkbox"/> OTHER <input type="checkbox"/> TYPE OF DISCHARGE: ROUTINE <input type="checkbox"/> EXPIRED <input type="checkbox"/> TRANS TO AMA <input type="checkbox"/> OTHER <input type="checkbox"/>											

MEDICAL RECORDS CHART

1
DICTATED BY PHYSICIAN

MEDICAL REC NO 1117449		N AMERICAN HOSPITAL 8050 NW 7th STREET, MIAMI, FL 33126		EMERGENCY ROOM/ OUTPATIENT SERVICES		PATIENT NO 7043409		THE ABOVE IS # 7512 05	
PATIENT'S NAME (LAST, FIRST, MI) RODRIGUEZ		MIDDLE NAME JUAN ALBERTO		DATE		TIME LEFT 12:50		TIME LEFT	
PERMANENT ADDRESS (STREET, CITY, STATE, ZIP) 3151 SW 84 COUR MIAMI FL 33155		PERMANENT PHONE 305-227-6574		MARRIAGE STATUS M		BIRTHPLACE CUBA		87 OCT 23 AM 1:30	
LOCAL ADDRESS (STREET, CITY, STATE, ZIP)		LOCAL PHONE		SEX AGE M 33Y		BIRTHDATE 09/25/1954		RELIGION C.A.T.	
PATIENT'S EMPLOYER		ADDRESS (STREET, CITY, STATE, ZIP)		EMPLOYER'S PHONE					
EMPLOYER'S OCCUPATION		WORK COMP DATE 10/23/1987		TIME 12:04PM		LOCATION		ACCIDENT DATE	
NEAREST RELATIVE (LAST, FIRST, MI) RODRIGUEZ, BLANCA		ADDRESS (STREET, CITY, STATE, ZIP) SAME		QUANTIFIER'S EMPLOYER					
GUARANTOR'S ADDRESS (STREET, CITY, STATE, ZIP) 3151 SW 84 COURT MIAMI FL 33155		RES PHONE NO 305-227-6574		EMPLOYER'S PHONE NO		PAT ID# C			
INSURANCE V390P NEW YORK LIFE INS - Great America		POLICY NO		SUBSCRIBER		MEDICARE NO 265956564		MEDICAD NO	
OTHER INSURANCE		POLICY NO		SUBSCRIBER		SOCIAL SECURITY NO 265-95-6564		880000 301358	
PATIENT'S SIGNATURE ZUBIZARRETA, ALAIN		DATE 10/23/87		TIME 12:50		NURSE 24		NURSE INT 28	
<p><i>PHYSICIAN'S NOTE:</i></p> <p>PT. NO ACUTE EDENIA. SKIN WARM & DRY. SLIGHT R.A. 0 x3 INCOMPENSABLE AMBULATORY - LUNGS CLEAR. 10/25/87. NO OTHER PAINFUL TENDERNESS NO CONTINUATION RECORDS 12:50 AM VOMITING HERE LARGE AMOUNT, INDIGESTED FOOD. DR. ZUBIZARRETA WAS NOTIFIED & GAVE ORDERS ADMISSION TO REC ROOM.</p>									
<p><i>PHYSICIAN'S SIGNATURE:</i> [Signature]</p> <p><i>PHYSICIAN'S NAME:</i> ALAIN ZUBIZARRETA</p>						<p><i>NURSE'S SIGNATURE:</i> [Signature]</p> <p><i>NURSE'S NAME:</i> [Name]</p>			
<p><i>PHYSICIAN'S ORDER:</i></p> <p>CHEST PAF L - KUG. & ROY. 12:50 AM R/R Temp clear Tender R/O of ulcers? NO R/O of ulcers NO R/O of ulcers 12:50 AM R/R - Pntal</p>						<p>MEDICATIONS AND TREATMENT:</p> <p>RESUME 1000 & 100 50 (LAST NAME)</p> <p>CAF KUB C. MONITORING Temporal FA 12:25 PV. Dental 25/100 PA DRESS [unclear] INSUR [unclear] JOHN HART. 1 100. PV</p> <p>LAB [unclear] T & C [unclear] VOL [unclear] [unclear] [unclear] CULTURE [unclear] [unclear] [unclear] [unclear] SUGAR [unclear] TEST [unclear]</p> <p>PRESCRIPTIONS</p>			
<p><i>PHYSICIAN'S SIGNATURE:</i> [Signature]</p> <p><i>PHYSICIAN'S NAME:</i> ALAIN ZUBIZARRETA</p>						<p><i>PHYSICIAN'S SIGNATURE:</i> [Signature]</p> <p><i>PHYSICIAN'S NAME:</i> ALAIN ZUBIZARRETA</p>			
<p>DISPOSITION: [unclear] AM: [unclear] TRANSFER: [unclear]</p> <p>1170</p> <p>MEDICAL RECORD</p>									

PAN AMERICAN HOSPITAL

MIAMI, FLORIDA

PAGE 5

PATIENT: >RODRIGUEZ, JUAN A.

MR>111744

AD >10/23/87

DOCTOR: >ALAIN ZUBIZARRETA, M.D.

DD >10/28/87

CLINICAL RESUME

FOLLOWUP AND ALSO TO BE
FOLLOWED BY DR. EDGAR
MUNEZ-BAEZ.

Alain Zubizarreta
>ALAIN ZUBIZARRETA, M.D.

TAPE:>PAM-7
D: 12/14/87 T: 12/15/87
DISK:>PAN050 DOC 4
TRANS-COMP., INC./BJH

PAN AMERICAN HOSPITAL

MIAMI, FLORIDA

PAGE 1

PATIENT: >RODRIGUEZ, JUAN A.

MR >

OD >
10/28

DOCTOR: >EDGAR NUNEZ, M.D.

OPERATIVE REPORT

10/24

PRE-OP DIAGNOSES:

1. ACUTE CHOLECYSTITIS.

POST-OP DIAGNOSES:

1. ACUTE CHOLECYSTITIS.
2. CHOLELITHIASIS.
3. MULTIPLE GALLBLADDER AND CYSTIC DUCT ADHESIONS.

NAME OF OPERATION:

1. >

SURGEON:

EDGAR NUNEZ, M.D.

ASSISTANT:

ANESTHESIA:

JUSTIFICATION:

THIS PATIENT, 33 YEARS OLD, WAS ADMITTED ON 10/21/87 THROUGH THE EMERGENCY ROOM TO DR. ZUBIZARRETA'S SERVICE WITH A COMPLAINT OF SEVERE PAIN IN THE RIGHT UPPER QUADRANT OF THE ABDOMEN RADIATING TO THE BACK AND FEVER.

DESCRIPTION OF PROCEDURE:

THE PATIENT WAS TAKEN TO THE OPERATING ROOM AND UNDER GENERAL ENDOTRACHEAL ANESTHESIA IN THE SUPINE POSITION, A LEVIN TUBE WAS PASSED DOWN TO THE STOMACH FOR SUCTION AND LEFT IN PLACE. THEN THE ADDOMEN WAS PREPPED AND DRAPED IN THE USUAL MANNER.

WE PROCEEDED WITH A RIGHT UPPER ABDOMEN PARAMEDIAN SKIN INCISION.

CONTINUED

*Cholecystitis
postoperative cholecystitis
my D. in my*

PAN AMERICAN HOSPITAL
MIAMI, FLORIDA

PAGE 2

PATIENT: >RODRIGUEZ, JUAN A.

KR >

GD >

DOCTOR: >EDGAR NUNEZ, M.D.

OPERATIVE REPORT

THE BLEEDING POINTS WERE CLAMPED AND COAGULATED. WE WENT DEEP TO THE SUBCUTANEOUS TISSUE UNTIL THE FASCIA WHICH WAS OPENED UP AND DOWN.

THE RIGHT RECTUS MUSCLE WAS SPLIT IN THE SAME DIRECTION TOO AND THEN THE PERITONEUM WAS OPENED AND THE ABDOMINAL CAVITY WAS EXPOSED.

AFTER GROSS MANUAL EXAMINATION OF THE ABDOMINAL CAVITY, IT WAS GROSSLY NORMAL EXCEPT THAT THE GALLBLADDER WAS DISTENDED AND EBERRANTOUS LIKE AN ACUTE PROCESS. SO THEREAFTER WE PROCEEDED TO INSERT A DALFOUR RETRACTOR FOR BETTER EXPOSURE AND THEN WE PROCEEDED TO SEPARATE THE ADHESIONS TO THE GALLBLADDER AND CYSTIC DUCT WITH THE METZENBAUM SCISSORS.

THEREAFTER, WE FOUND THAT THIS PATIENT PRESENTED LIKE A DOUBLE POUCH OF THE GALLBLADDER IN THE DISTAL PORTION OF THE HARTMAN POUCH AND IT WAS GRASPED WITH A PEAN FOR TRACTION AND DISSECTION OF THE PEDICLE WAS PERFORMED. THE CYSTIC ARTERY WAS IDENTIFIED, A DOUBLE METALLIC CLIP WAS PLACED AND IT WAS TIED WITH 2-0 BLACK SILK AND SEVERED.

THEN ALSO THE CYSTIC DUCT WAS IDENTIFIED AND IT WAS A VERY NARROW CYSTIC DUCT WITH MULTIPLE ADHESIONS AROUND LIKE STENOTIC. A METALLIC CLIP WAS PLACED PROXIMALLY IN ORDER TO AVOID ANY DISLODGEEMENT OF STONE TO THE AREA OF THE COMMON DUCT.

THEREAFTER, WE PROCEEDED TO OPEN THE ANTERIOR WALL OF THE CYSTIC DUCT THAT AS I SAID BEFORE WAS VERY NARROW AND THROUGH THIS SMALL OPENING A PLASTIC CATHETER WAS INSERTED AND TIED AROUND WITH 2-0

CONTINUED

PAN AMERICAN HOSPITAL

MIAMI, FLORIDA

PAGE 3

PATIENT: >RODRIGUEZ, JUAN A.

NR >

OD >

DOCTOR: >EDGAR NUNEZ, M.D.

OPERATIVE REPORT

BLACK SILK IN ORDER TO AVOID ANY SPILLAGE OF THE DYE MATERIAL INTO THE ABDOMINAL CAVITY AND AN OPERATIVE CHOLANGIOGRAM WAS TAKEN.

IT WAS REPORTED NORMAL WITH PASSAGE OF THE DYE TO THE AREA OF THE DUODENUM.

THEREAFTER WE PROCEEDED TO REMOVE THE CATHETER FROM THE AREA OF THE CYSTIC DUCT AND IT WAS TIED NEAR THE JUNCTION WITH THE COMMON DUCT WITH 3-0 BLACK SILK AND ANOTHER METALLIC CLIP WAS PLACED AND SEVERED.

THEREAFTER, WE PROCEEDED TO REMOVE THE GALLBLADDER FROM THE LIVERBED BY BLUNT AND SHARP DISSECTION AND THE WHOLE SPECIMEN WAS SUBMITTED TO THE PATHOLOGY DEPARTMENT FOR EXAMINATION.

THEN THE LIVERBED WAS APPROXIMATED WITH INTERRUPTED SUTURES OF 0 CHRONIC CATGUT. THE AREA WAS IRRIGATED WITH PLENTY OF SALINE SOLUTION AND THOROUGH HEMOSTASIS WAS CARRIED OUT. THEREAFTER WE PROCEEDED TO INSERT A LARGE PENROSE DRAIN IN THE MORISON'S SPACE AND CAME OUT BY A STABWOUND IN THE RIGHT SIDE OF THE UPPER ABDOMEN.

TWO SPONGE COUNTS WERE PERFORMED BEFORE CLOSURE OF THE ABDOMINAL CAVITY. THEY WERE REPORTED CORRECT. SO WE DECIDED TO CLOSE THE ANTERIOR PERITONEUM WITH A RUNNING SUTURE OF 0 CHRONIC CATGUT. THE MUSCLE WAS APPROXIMATED WITH INTERRUPTED SUTURES OF THE SAME MATERIAL TOO. THE FASCIA WAS CLOSED WITH INTERRUPTED FIGURE OF EIGHT OF NEUROLOX 0.

CONTINUED

PAN AMERICAN HOSPITAL

MIAMI, FLORIDA

PAGE 4

PATIENT: >RODRIGUEZ, JUAN A.

NR >

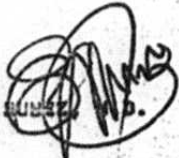
OD >

DOCTOR: >EDGAR NUNEZ, M.D.

OPERATIVE REPORT

THE SUBCUTANEOUS TISSUE WAS APPROXIMATED WITH INTERRUPTED SUTURE
OF 2-0 PLAIN CATGUT AND THE SKIN WAS APPROXIMATED WITH
INTERRUPTED MATTRESS SUTURES OF 4-0 NYLON AND DRESSED.

NO BLOOD TRANSFUSION WAS USED IN THE SURGICAL PROCEDURE.

>EDGAR NUNEZ, M.D. 

CC: ALAIN ZUBIZARRETA, M.D.
CC: MANUEL BARBEITE, M.D.

TAPE: >G20
DT: 10/26/87 T: 10/27/87
DISK: >PAN036 DOC 7
TRANS-COMP., INC./BJM