



Florida Power & Light Company, P. O. Box 14000, Juno Beach, FL 33408-0420  
Law Department

(561) 691-3441

ORIGINAL

March 10, 1998

VIA HAND DELIVERY

Ms. Blanca S. Bayó, Director  
Division of Records and Reporting  
Florida Public Service Commission  
4075 Esplanade Way, Room 110  
Tallahassee, Florida 32399-0850

**RE: Florida Power & Light Company's First Amended  
Request for Confidential Classification in the Review of  
1996 Earnings - Docket No. 971298 EI;  
Audit Control No. 97-125-4-1**

Dear Ms. Bayó:

Florida Power & Light Company ("FPL") hereby submits for filing:

The original and fifteen (15) copies of FPL's First Amended Request For Confidential Classification in the Review of 1996 Earnings, including the following exhibits:

- ACK \_\_\_\_\_
- AFA \_\_\_\_\_
- APP \_\_\_\_\_
- CAF \_\_\_\_\_
- CMU \_\_\_\_\_
- CTR \_\_\_\_\_
- EAG \_\_\_\_\_
- LEC \_\_\_\_\_
- LI \_\_\_\_\_
- Q \_\_\_\_\_
- R \_\_\_\_\_
- SEC \_\_\_\_\_
- WAS \_\_\_\_\_

One copy of Exhibit A, the confidential documents referred to in FPL's Request, submitted for filing in a separate, sealed folder marked "EXHIBIT A - CONFIDENTIAL;"

Two (2) copies of Exhibit B, the same documents referred to in FPL's Request in which the information contended by FPL to be confidential has been redacted, submitted for filing in two separate folders marked "EXHIBIT B;"

The original and fifteen (15) copies of Exhibit C, FPL's justification and identification matrix, submitted for filing as an attachment to FPL's Request;

The originals and fifteen (15) copies of Exhibits D, E, F and G, affidavits in support of FPL's Request, submitted for filing as attachments to FPL's Request; and

One copy of Exhibit H, a computer diskette containing FPL's identification and justification matrix ( in WordPerfect 6.0/6.1), submitted for filing as an attachment to FPL's request.

DOCUMENT NUMBER-DATE  
MAR 10 86  
FPSC-RECORDS/REPORTING

RECEIVED & FILED

FPSC-BUREAU OF RECORDS

*request*  
DOCUMENT NUMBER-DATE  
03036 MAR 10 86

*copy*  
DOCUMENT NUMBER-DATE  
03037 MAR 10 86

X-114 0210769

an FPL Group company

FPSC-RECORDS/REPORTING


FPSC-RECORDS/REPORTING

Ms. Blanca S. Beyó, Director  
Division of Records and Reporting  
Florida Public Service Commission  
March 10, 1998  
Page 2

Pursuant to Rule 25-22.006(3)(d), FPL requests confidential treatment of these documents pending resolution of FPL's First Amended Request for Confidential Classification.

If you or your Staff have any questions regarding this filing, please contact me.

Respectfully submitted,



---

Patrick M. Bryan  
11760 U. S. Hwy One  
Suite 600  
No. Palm Beach, Florida 33408  
(561) 691-3441

Attorney for Florida Power  
& Light Company

PMB/ak

Enclosures

ORIGINAL

**Exhibit B**

**REDACTED DOCUMENTS**

**(SUBMITTED SEPARATELY)**

- ACK \_\_\_\_\_
- AFA \_\_\_\_\_
- APP \_\_\_\_\_
- CAF \_\_\_\_\_
- CMU \_\_\_\_\_
- CTR \_\_\_\_\_
- EAG \_\_\_\_\_
- LEG \_\_\_\_\_
- LIN \_\_\_\_\_
- OPC \_\_\_\_\_
- RCH \_\_\_\_\_
- SEC  \_\_\_\_\_
- WAS \_\_\_\_\_
- OTH \_\_\_\_\_

971298-61

DOCUMENT NUMBER-DATE

~~03008~~ MAR 10 88

EPSC-RECORDS/REPORTING

CONFIDENTIAL

9 p.1



**CONFIDENTIAL**

9 p2

**CONFIDENTIAL**

9 p3

**CONFIDENTIAL**

9 p4

**CONFIDENTIAL**

9 p5

**CONFIDENTIAL**

9 pg

CONFIDENTIAL

9 p7



CONFIDENTIAL

9 p10

**CONFIDENTIAL**

9 p 11

CONFIDENTIAL

9 p12

**CONFIDENTIAL**

9 p13

**CONFIDENTIAL**

9 p14

**CONFIDENTIAL**

9 p 15



**CONFIDENTIAL**

9 p16

## Materials (Supplies)

2 reports: H&S Bell procedure: transmission and distribution

- ① Distribution Cost Administrator Report (available on line)
- ② Inventory Tracker Report (works when local managers that control H&S)

Further all is the Paper-Management Systems and I created a new Inventory system. Paper-Management Ultimate Management (PDM)

also a Paper-Management System was implemented.

On 10/1/95 the Nuclear Inventory was converted to the new system. Project, translated into account 154,000 or 6/1.

The system is organized by functional areas:

- ① Paper Delivery Inventory
- ② Paper (Generation) Fuel
- ③ Nuclear Material Management
- ④ Quality Control System

## SUMMARY OF OBSERVATIONS

Site	Organization	Time & Location
Wilmington	W&S	H&S
Port Hope	W&S	Small Dept

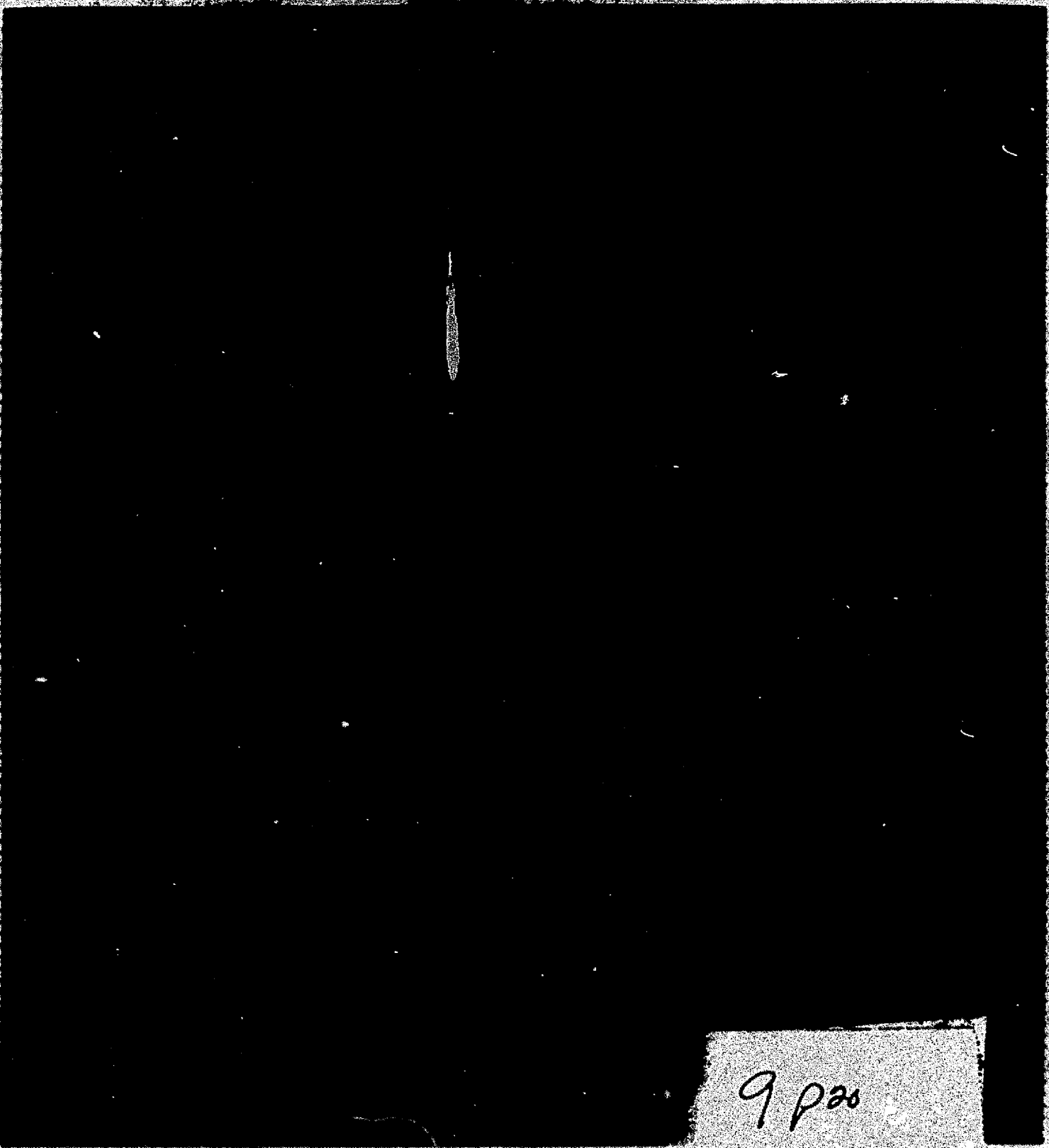
Verification for Fuel Transfers are Distributed to Fuel Bank in process of completion.

7/18

**CONFIDENTIAL**

9 P19

**CONFIDENTIAL**



9 p 20

CONFIDENTIAL

9p21

CONFIDENTIAL

9 p22



**CONFIDENTIAL**

9 p25

**CONFIDENTIAL**

9 p 26

**CONFIDENTIAL**

9 p 28

CONFIDENTIAL

9 P 40



CONFIDENTIAL

9 pth



CONFIDENTIAL

9 p51

CONFIDENTIAL

9 p52

**CONFIDENTIAL**

9 p53

CONFIDENTIAL

9 p54

CONFIDENTIAL

9 p55







69  
188

	A	B	C	D	E	F	G	H	I	J	K	L	M	N
18200	CON REG AMT FROM THERMAL UPGRADE		6,281,297		6,281,297									
18300	PROFESSIONAL SURVEY & INVESTIGATION CHG		315,028,774		315,028,774									
18400	PROF-GEMMAY RESEARCH REPORTS		900		900									
18500	FLORIDA HIGH SPEED RAIL PROJECT													
18600	GENERAL PROF CONVERSION STUDY FROM 6 PROC		44,851		44,851									
18700	GENERAL PROF CONVERSION STUDY-MINUTE PRT													
18800	STUDIES-MOLECULAR													
18900	CONSUMER 4-FINCHER CHARGES													
19000	STUDIES-STATISTICS		45,551		45,551									
	Operating Accounts													
	OUTSIDE SERVICES-CLERICAL													
	Temporary Facilities													
19400	TEMPORARY FACILITIES		(835,125)		(835,125)									
19500	TEMPORARY FACILITIES-CLEANING REFUND		(835,125)		(835,125)									
	Operating Expenses													
19600	MISC DEF USE MISC		589,897		589,897									
19700	MISC DEF OPER & MAINT REPAIRS		817,029		817,029									
19800	MISC DEF OPER & MAINT		1,224,265		1,224,265									
19900	MISC DEF OPER & MAINT		208,845		208,845									
20000	MISC DEF OPER & MAINT													
20100	MISC DEF OPER & MAINT													
20200	MISC DEF OPER & MAINT													
20300	MISC DEF OPER & MAINT													
20400	MISC DEF OPER & MAINT													
20500	MISC DEF OPER & MAINT													
20600	MISC DEF OPER & MAINT													
20700	MISC DEF OPER & MAINT													
20800	MISC DEF OPER & MAINT													
20900	MISC DEF OPER & MAINT													
21000	MISC DEF OPER & MAINT													
21100	MISC DEF OPER & MAINT													
21200	MISC DEF OPER & MAINT													
21300	MISC DEF OPER & MAINT													
21400	MISC DEF OPER & MAINT													
21500	MISC DEF OPER & MAINT													
21600	MISC DEF OPER & MAINT													
21700	MISC DEF OPER & MAINT													
21800	MISC DEF OPER & MAINT													
21900	MISC DEF OPER & MAINT													
22000	MISC DEF OPER & MAINT													
22100	MISC DEF OPER & MAINT													
22200	MISC DEF OPER & MAINT													
22300	MISC DEF OPER & MAINT													
22400	MISC DEF OPER & MAINT													
22500	MISC DEF OPER & MAINT													
22600	MISC DEF OPER & MAINT													
22700	MISC DEF OPER & MAINT													
22800	MISC DEF OPER & MAINT													
22900	MISC DEF OPER & MAINT													
23000	MISC DEF OPER & MAINT													
23100	MISC DEF OPER & MAINT													
23200	MISC DEF OPER & MAINT													
23300	MISC DEF OPER & MAINT													
23400	MISC DEF OPER & MAINT													
23500	MISC DEF OPER & MAINT													
23600	MISC DEF OPER & MAINT													
23700	MISC DEF OPER & MAINT													
23800	MISC DEF OPER & MAINT													
23900	MISC DEF OPER & MAINT													
24000	MISC DEF OPER & MAINT													
24100	MISC DEF OPER & MAINT													
24200	MISC DEF OPER & MAINT													
24300	MISC DEF OPER & MAINT													
24400	MISC DEF OPER & MAINT													
24500	MISC DEF OPER & MAINT													
24600	MISC DEF OPER & MAINT													
24700	MISC DEF OPER & MAINT													
24800	MISC DEF OPER & MAINT													
24900	MISC DEF OPER & MAINT													
25000	MISC DEF OPER & MAINT													
25100	MISC DEF OPER & MAINT													
25200	MISC DEF OPER & MAINT													
25300	MISC DEF OPER & MAINT													
25400	MISC DEF OPER & MAINT													
25500	MISC DEF OPER & MAINT													
25600	MISC DEF OPER & MAINT													
25700	MISC DEF OPER & MAINT													
25800	MISC DEF OPER & MAINT													
25900	MISC DEF OPER & MAINT													
26000	MISC DEF OPER & MAINT													
26100	MISC DEF OPER & MAINT													
26200	MISC DEF OPER & MAINT													
26300	MISC DEF OPER & MAINT													
26400	MISC DEF OPER & MAINT													
26500	MISC DEF OPER & MAINT													
26600	MISC DEF OPER & MAINT													
26700	MISC DEF OPER & MAINT													
26800	MISC DEF OPER & MAINT													
26900	MISC DEF OPER & MAINT													
27000	MISC DEF OPER & MAINT													
27100	MISC DEF OPER & MAINT													
27200	MISC DEF OPER & MAINT													
27300	MISC DEF OPER & MAINT													
27400	MISC DEF OPER & MAINT													
27500	MISC DEF OPER & MAINT													
27600	MISC DEF OPER & MAINT													
27700	MISC DEF OPER & MAINT													
27800	MISC DEF OPER & MAINT													
27900	MISC DEF OPER & MAINT													
28000	MISC DEF OPER & MAINT													
28100	MISC DEF OPER & MAINT													
28200	MISC DEF OPER & MAINT													
28300	MISC DEF OPER & MAINT													
28400	MISC DEF OPER & MAINT													
28500	MISC DEF OPER & MAINT													
28600	MISC DEF OPER & MAINT													
28700	MISC DEF OPER & MAINT													
28800	MISC DEF OPER & MAINT													
28900	MISC DEF OPER & MAINT													
29000	MISC DEF OPER & MAINT													
29100	MISC DEF OPER & MAINT													
29200	MISC DEF OPER & MAINT													
29300	MISC DEF OPER & MAINT													
29400	MISC DEF OPER & MAINT													
29500	MISC DEF OPER & MAINT													
29600	MISC DEF OPER & MAINT													
29700	MISC DEF OPER & MAINT													
29800	MISC DEF OPER & MAINT													
29900	MISC DEF OPER & MAINT													
30000	MISC DEF OPER & MAINT													
30100	MISC DEF OPER & MAINT													
30200	MISC DEF OPER & MAINT													
30300	MISC DEF OPER & MAINT													
30400	MISC DEF OPER & MAINT													



Page 70

	A	B	C	D	E	F	G	H	I	J	K	L	M	N	O	P	Q	R	S	T	U	V	W	X	Y	Z	
Research, Development and																											
19870 R.O.E.P. SAUCONOCOMLISON TEST BAIN																											
Total			24,153,344		24,153,344			24,153,344																			



CONFIDENTIAL

Tickmarks

**CONFIDENTIAL**

{a}

Agreed amounts to G/L at 12/31/95 without exception.

{b}

Agreed amounts to prior year workpapers without exception.

9- 71

CONFIDENTIAL

9- 72

CONFIDENTIAL

9.

73

**CONFIDENTIAL**

9. 74

CONFIDENTIAL

9.

76

**CONFIDENTIAL**

9.

p 78

**CONFIDENTIAL**

A- 79  
P



CONFIDENTIAL

9.

p. 80

CONFIDENTIAL

9-  
p 81

CONFIDENTIAL

9. 1.87









**CONFIDENTIAL**

9.

P110

CONFIDENTIAL

Q. P. 111



CONFIDENTIAL

9. p112

CONFIDENTIAL

Q p. 113

CONFIDENTIAL

9. P114

CONFIDENTIAL

Q.  
p115

**CONFIDENTIAL**

9 p116

CONFIDENTIAL

9  
P117

**CONFIDENTIAL**

9

p. 118

CONFIDENTIAL

9

p.119



CONFIDENTIAL

9 p120

CONFIDENTIAL

9 p. 127

CONFIDENTIAL

a.  
p. 128

**CONFIDENTIAL**

9.

p. 129

CONFIDENTIAL

9

p. 130

CONFIDENTIAL

9.  
p. 131

CONFIDENTIAL

9-1  
p. 1

CONFIDENTIAL

9-1

2



LIBRARY

4

CONFIDENTIAL

9-1

4

CONFIDENTIAL

9-1

5

CONFIDENTIAL

9-1

6

CONFIDENTIAL

a-1

7

CONFIDENTIAL

9-1

8

CONFIDENTIAL

9-1

9

CONFIDENTIAL

9-1

10



CONFIDENTIAL

9-1

11

CONFIDENTIAL

9-1

12

CONFIDENTIAL

9-1

13

CONFIDENTIAL

9-1

14

CONFIDENTIAL

9-1

15

CONFIDENTIAL

9-1

16

CONFIDENTIAL

9-2

CONFIDENTIAL

19-3  
/ 1



CONFIDENTIAL

$\frac{19-3}{2}$

P1

CONFIDENTIAL

19-3

P2

CONFIDENTIAL

A-3

P3

CONFIDENTIAL

19-3

P4

CONFIDENTIAL

19-3

P5

CONFIDENTIAL

A-3

P6

CONFIDENTIAL

19.3

P7

CONFIDENTIAL

19-3

P 8



CONFIDENTIAL

19-3

P9

CONFIDENTIAL

21-7

P1

CONFIDENTIAL

21-7 p2 2-7

CONFIDENTIAL

21-7  
3-2

CONFIDENTIAL

21-7  
8-1

CONFIDENTIAL

L

L

22-1  
1

CONFIDENTIAL

7

2

$\frac{22-1}{1}$  2

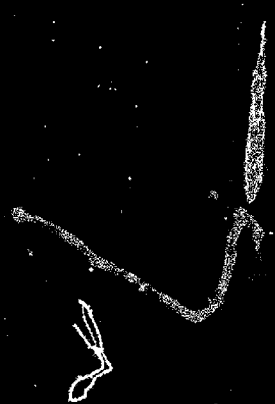
CONFIDENTIAL

22-1  
1

3



CONFIDENTIAL



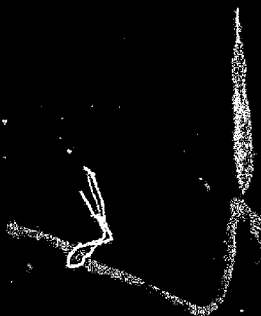
22-1  
1

4

CONFIDENTIAL

22-1  
1 5

CONFIDENTIAL



22-1  
1-1

P-1

CONFIDENTIAL

2  
S

22-1  
1-1

P.2

CONFIDENTIAL



22-1  
1-1  
p.3

CONFIDENTIAL



22-1  
1-1

G.4