

BEN E. GIRTMAN
Attorney at Law

ORIGINAL

RECEIVED-PPSC

1020 East Lafayette Street
Suite 207
Tallahassee, Florida 32301-4552

CO FEB 29 AM 10:21 Telephone: (850) 656-3232
(850) 656-3233
Facsimile: (850) 656-3233

RECORDS AND
REPORTING

February 29, 2000

Ms. Blanca Bayo
Florida Public Service Commission
Division of Records and Reporting
2540 Shumard Oak Blvd.
Tallahassee, FL 32399-0850

Re: Docket No. 991437-WS, Application of Wedgefield Utilities, Inc. to Increase its
Water Rates and Charges

Dear Ms. Bayo:

Enclosed for filing in the above referenced docket are the following:

- a. Map and customer list required by Rule 25-30.440(1) (1 copy) in response to the Staff deficiency letter.

Thank you for your assistance. If there are any questions, please let me know.

Sincerely yours,



Ben E. Girtman

Encl.

cc w/out encl: Ms. Erin Nicholas

AFA	<u>1</u>
APP	<u> </u>
CAF	<u> </u>
CMU	<u> </u>
CTR	<u> </u>
EAG	<u> </u>
LEG	<u> 1 </u>
MAS	<u> </u>
OPC	<u> </u>
RRR	<u> </u>
SEC	<u> 1 </u>
* WAW	<u> </u>
OTH	<u> </u>

RECEIVED & FILED

FPSC-BUREAU OF RECORDS

DOCUMENT NUMBER-DATE

02662 FEB 29 00

FPSC-RECORDS/REPORTING

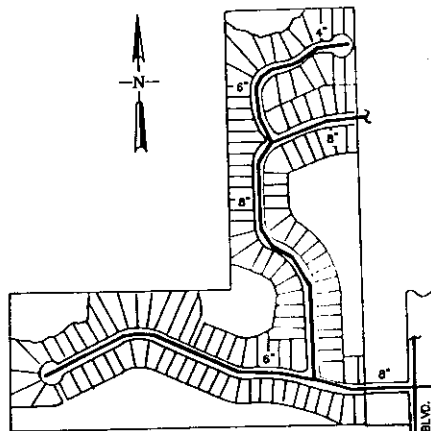
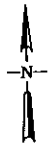
Sent Orig to WAW,
Copy made for dkt.
3/3 mar

WEDGEFIELD CUSTOMER WATER SERVICE MAP

WEDGEFIELD UTILITES, INC. /



UTILITIES, INC.
of FLORIDA

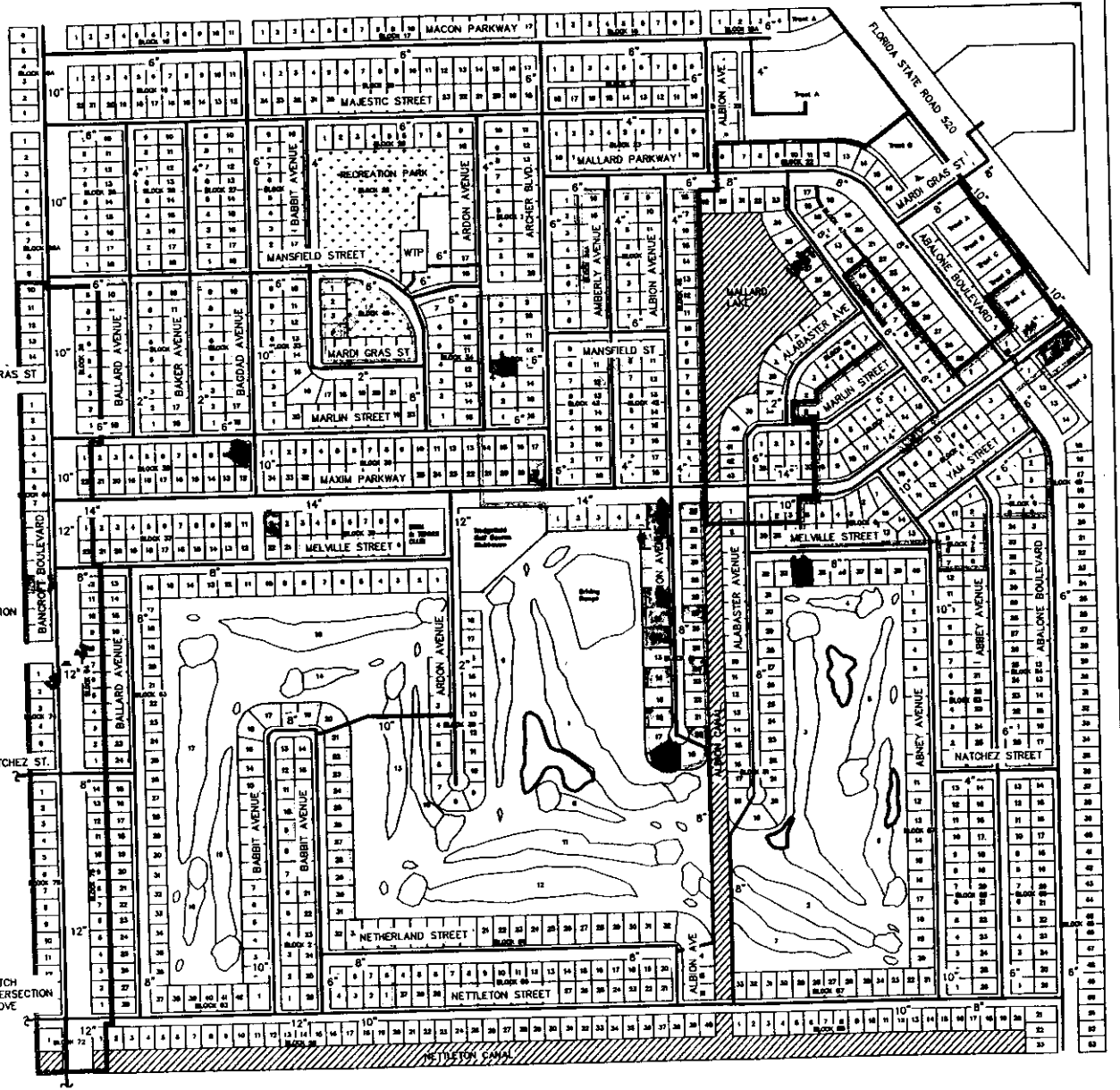


NETTLETON CANAL

MATCH INTERSECTION BELOW

NATCHEZ ST.

MATCH INTERSECTION ABOVE



* COMMERCIAL ACCOUNT

* IRRIGATION ACCOUNT

THIS MAP CORRESPONDS TO LOCATIONS HIGHLIGHTED ON CUSTOMER LIST.

HIGHLIGHTED ACCOUNTS CORRESPOND TO SERVICE AREA MAP.

2/3/00 J.yn

CY	RTE	UNIT	BLK	LOT#	NUMBER	PRE	STREET	SUF	APT	ACCT #	SEQ	ACCTS	UNITS	TYPE	MTR	SV	TAP FEE	NB DATE	CSR
FL12	5			1	20751		SR 520			649-000001	5	1	1	COML	1.5"	W/S			EC
FL12	5			10			BATHROOM			649-000010	10	1	1	COML	5/8"	W/S			EC
FL12	5			12			MAINTENANCE			649-000012	15	1	1	COML	1"	W/S			EC
FL12	5			13			CLUBHOUSE			649-000013	20	1	1	COML	2"	W/S			EC
FL12	5		5	4			WEDGEFIELD			649-000504	25	1	1	COML	1.5"	W/S			EC
FL12	5		5	9			BATH HOUSE			649-000509	30	1	1	COML	5/8"	W/S			EC
FL12	4			32	19519		GLEN ELM	WAY		649-001032	1155	1	1	RES	5/8"	W/S	\$3,000.00	5/18/1999	KS
FL12	4			34	19533		GLEN ELM	WAY		649-001034	1165	1	1	RES	5/8"	W/S	\$3,000.00	11/2/1999	KS
FL12	4			46			GLEN ELM	WAY		649-001046	1225	1	1	RES	5/8"	W/S	\$3,000.00	11/2/1999	KS
FL12	4			57			REGENCY OAK	LN		649-001057	1280	1	1	RES	5/8"	W/S	\$3,000.00	9/22/1998	EC
FL12	4			59	2814		REGENCY OAK	LN		649-001059	1290	1	1	RES	5/8"	W/S	\$3,000.00	12/7/1999	KS
FL12	4			65			REGENCY OAK	LN		649-001065	1320	1	1	RES	5/8"	W/S	\$3,000.00	3/16/1999	EC
FL12	4			66	2734		REGENCY OAK	LN		649-001066	1325	1	1	RES	5/8"	W/S	\$3,000.00	1/12/1999	EC
FL12	4			67	2728		REGENCY OAK	LN		649-001067	1330	1	1	RES	5/8"	W/S	\$3,000.00	1/26/1999	EC
FL12	4			68	2722		REGENCY OAK	LN		649-001068	1335	1	1	RES	5/8"	W/S	\$3,000.00	2/2/1999	EC
FL12	4			71			REGENCY OAK	LN		649-001071	1350	1	1	RES	5/8"	W/S	\$3,000.00	10/12/1999	KS
FL12	4			72			PINE GLEN	CT		649-001072	1355	1	1	RES	5/8"	W/S	\$3,000.00	11/23/99	KS
FL12	4			75	2680		PINE GLEN	CT		649-001075	1370	1	1	RES	5/8"	W/S	\$3,000.00	11/17/1998	EC
FL12	4			79	2656		PINE GLEN	CT		649-001079	1390	1	1	RES	5/8"	W/S	\$3,000.00	11/23/1999	KS
FL12	4			81	2644		PINE GLEN	CT		649-001081	1400	1	1	RES	5/8"	W/S	\$3,000.00	6/22/1999	KS
FL12	4			83	2624		PINE GLEN	CT		649-001083	1410	1	1	RES	5/8"	W/S	\$3,000.00	8/17/1999	KS
FL12	4			84	2618		PINE GLEN	CT		649-001084	1415	1	1	RES	5/8"	W/S	\$3,000.00	9/16/1999	KS
FL12	4			87	2600		PINE GLEN	CT		649-001087	1430	1	1	RES	5/8"	W/S		4/28/1998	EC
FL12	4			88	2601		PINE GLEN	CT		649-001088	1435	1	1	RES	5/8"	W/S		4/28/1998	EC
FL12	4			89	2607		PINE GLEN	CT		649-001089	1440	1	1	RES	5/8"	W/S	\$3,000.00	9/16/1999	KS
FL12	4			93	2693		PINE GLEN	CT		649-001093	1460	1	1	RES	5/8"	W/S	\$3,000.00	12/1/1998	EC
FL12	4			95			REGENCY OAK/PINE GLEN			649-001095	1470	1	1	RES	5/8"	W/S	\$3,000.00	11/23/1999	KS
FL12	4			96	2632		REGENCY OAK	LN		649-001096	1475	1	1	RES	5/8"	W/S	\$3,000.00	11/9/1999	KS
FL12	4			97	2626		REGENCY OAK	LN		649-001097	1480	1	1	RES	5/8"	W/S	\$3,000.00	11/9/1999	KS
FL12	4			98			REGENCY OAK	LN		649-001098	1485	1	1	RES	5/8"	W/S	\$3,000.00	11/9/1999	KS
FL12	4			99	2614		REGENCY OAK	LN		649-001099	1490	1	1	RES	5/8"	W/S	\$3,000.00	11/23/1999	KS
FL12	4			100	2608		REGENCY OAK	LN		649-001100	1495	1	1	RES	5/8"	W/S	\$3,000.00	11/23/1999	KS
FL12	4			101	2602		REGENCY OAK	LN		649-001101	1500	1	1	RES	5/8"	W/S	\$3,000.00	11/23/1999	KS
FL12	4			102			REGENCY OAK	LN		649-001102	1505	1	1	RES	5/8"	W/S	\$3,000.00	10/12/1999	KS
FL12	4			105	2627		REGENCY OAK	LN		649-001105	1520	1	1	RES	5/8"	W/S		1/27/1998	EC
FL12	4			106	2633		REGENCY OAK	LN		649-001106	1525	1	1	RES	5/8"	W/S		1/27/1998	EC
FL12	4			107			REGENCY OAK	LN		649-001107	1530	1	1	RES	5/8"	W/S	\$3,000.00	5/25/1999	KS
FL12	4			108			REGENCY OAK	LN		649-001108	1535	1	1	RES	5/8"	W/S	\$3,000.00	10/13/1998	EC
FL12	4			110	2729		REGENCY OAK	LN		649-001110	1545	1	1	RES	5/8"	W/S		3/3/1998	EC
FL12	4			112	2747		REGENCY OAK	LN		649-001112	1555	1	1	RES	5/8"	W/S		3/3/1998	EC
FL12	4			113			REGENCY OAK	LN		649-001113	1560	1	1	RES	5/8"	W/S	\$3,000.00	8/18/1998	EC
FL12	4			114	2801		REGENCY OAK	LN		649-001114	1565	1	1	RES	5/8"	W/S	\$3,000.00	8/17/1999	KS
FL12	4			116			REGENCY OAK	LN		649-001116	1575	1	1	RES	5/8"	W/S	\$3,000.00	7/20/1999	KS
FL12	5		5	5		S	IRRIGATION	MAXIM PRKWAY		649-001505	35	1	1	IRRG	2"	W			EC
FL12	5					N	IRRIGATION	MAXIM PRKWAY		649-001506	40	1	1	IRRG	2"	W	N/A EXISTING	9/29/1998	EC
FL12	5		92	1	19950		NUGENT	ST		649-009201	45	1	1	COML	5/8"	W/S			EC
FL12	1	1	16	1	20115		MACON	PKWY		649-101601	1175	1	1	RES	5/8"	W/S			EC
FL12	1	1	16	2	20123		MACON	PKWY		649-101602	1170	1	1	RES	5/8"	W/S			EC

649 Wedgefield (FL12)
Street Index

CY	RTE	UNIT	BLK	LOT#	NUMBER	PRE	STREET	SUF	APT	ACCT #	SEQ	ACCTS	UNITS	TYPE	MTR	SV	TAP FEE	NB DATE	CSR
FL12	1	1	16	3	20131		MACON		PKWY	649-101603	1165	1	1	RES	5/8"	W/S			EC
FL12	1	1	16	4	20139		MACON		PKWY	649-101604	1160	1	1	RES	5/8"	W/S			EC
FL12	1	1	16	5			MACON		PKWY	649-101605	1155	1	1	RES	5/8"	W/S	\$3,000.00	9/1/1998	EC
FL12	1	1	16	6	20209		MACON		PKWY	649-101606	1150	1	1	RES	5/8"	W/S			EC
FL12	1	1	16	7	20217		MACON		PKWY	649-101607	1145	1	1	RES	5/8"	W/S			EC
FL12	1	1	16	8	20225		MACON		PKWY	649-101608	1140	1	1	RES	5/8"	W/S			EC
FL12	1	1	16	11			MACON		PKWY	649-101611	1125	1	1	RES	5/8"	W/S	\$3,000.00	10/6/1998	EC
FL12	1	1	17	1	20303		MACON		PKWY	649-101701	1120	1	1	RES	5/8"	W/S			EC
FL12	1	1	17	2	20311		MACON		PKWY	649-101702	1115	1	1	RES	5/8"	W/S			EC
FL12	1	1	17	5	20335		MACON		PKWY	649-101705	1100	1	1	RES	5/8"	W/S	\$3,000.00	12/14/1999	KS
FL12	1	1	17	7	20409		MACON		PKWY	649-101707	1090	1	1	RES	5/8"	W/S		9/3/1996	EC
FL12	1	1	17	9	20421		MACON		PKWY	649-101709	1080	1	1	RES	5/8"	W/S			EC
FL12	1	1	17	11	20433		MACON		PKWY	649-101711	1070	1	1	RES	5/8"	W/S		4/29/1997	EC
FL12	1	1	17	12	20445		MACON		PKWY	649-101712	1065	1	1	RES	5/8"	W/S			EC
FL12	1	1	17	15	20515		MACON		PKWY	649-101715	1050	1	1	RES	5/8"	W/S			EC
FL12	1	1	17	16	20523		MACON		PKWY	649-101716	1045	1	1	RES	5/8"	W/S			EC
FL12	1	1	19	1	20116		MACON		PKWY	649-101901	1210	1	1	RES	5/8"	W/S			EC
FL12	1	1	19	2	20122		MACON		PKWY	649-101902	1215	1	1	RES	5/8"	W/S	\$3,000.00	8/17/1999	KS
FL12	1	1	19	3			MACON		PKWY	649-101903	1220	1	1	RES	5/8"	W/S	\$3,000.00	9/1/1998	EC
FL12	1	1	19	4	20140		MACON		PKWY	649-101904	1225	1	1	RES	5/8"	W/S			EC
FL12	1	1	19	5	20202		MACON		PKWY	649-101905	1230	1	1	RES	5/8"	W/S			EC
FL12	1	1	19	6	20210		MACON		PKWY	649-101906	1235	1	1	RES	5/8"	W/S			EC
FL12	1	1	19	7			MACON		PKWY	649-101907	1240	1	1	RES	5/8"	W/S	\$3,000.00	11/24/1998	EC
FL12	1	1	19	8	20218		MACON		PKWY	649-101908	1245	1	1	RES	5/8"	W/S		9/23/1997	EC
FL12	1	1	19	10	20242		MACON		PKWY	649-101910	1255	1	1	RES	5/8"	W/S			EC
FL12	1	1	19	11	20248		MACON		PKWY	649-101911	1260	1	1	RES	5/8"	W/S			EC
FL12	1	1	19	12	20251		MAJESTIC		ST	649-101912	1615	1	1	RES	5/8"	W/S			EC
FL12	1	1	19	14	20235		MAJESTIC		ST	649-101914	1625	1	1	RES	5/8"	W/S			EC
FL12	1	1	19	16	20219		MAJESTIC		ST	649-101916	1635	1	1	RES	5/8"	W/S			EC
FL12	1	1	19	17	20211		MAJESTIC		ST	649-101917	1640	1	1	RES	5/8"	W/S			EC
FL12	1	1	19	18	20203		MAJESTIC		ST	649-101918	1645	1	1	RES	5/8"	W/S			EC
FL12	1	1	19	19	20141		MAJESTIC		ST	649-101919	1650	1	1	RES	5/8"	W/S			EC
FL12	1	1	19	20	20133		MAJESTIC		ST	649-101920	1655	1	1	RES	5/8"	W/S			EC
FL12	1	1	19	21	20125		MAJESTIC		ST	649-101921	1660	1	1	RES	5/8"	W/S			EC
FL12	1	1	19	22	20117		MAJESTIC		ST	649-101922	1665	1	1	RES	5/8"	W/S			EC
FL12	1	1	20	1	20304		MACON		PKWY	649-102001	1265	1	1	RES	5/8"	W/S			EC
FL12	1	1	20	2	20312		MACON		PKWY	649-102002	1270	1	1	RES	5/8"	W/S			EC
FL12	1	1	20	4	20328		MACON		PKWY	649-102004	1280	1	1	RES	5/8"	W/S			EC
FL12	1	1	20	5	20336		MACON		PKWY	649-102005	1285	1	1	RES	5/8"	W/S			EC
FL12	1	1	20	6	20344		MACON		PKWY	649-102006	1290	1	1	RES	5/8"	W/S			EC
FL12	1	1	20	12	20446		MACON		PKWY	649-102012	1320	1	1	RES	5/8"	W/S			EC
FL12	1	1	20	14	20508		MACON		PKWY	649-102014	1330	1	1	RES	5/8"	W/S			EC
FL12	1	1	20	15	20516		MACON		PKWY	649-102015	1335	1	1	RES	5/8"	W/S			EC
FL12	1	1	20	16	20524		MACON		PKWY	649-102016	1340	1	1	RES	5/8"	W/S			EC
FL12	1	1	20	17	20532		MACON		PKWY	649-102017	1345	1	1	RES	5/8"	W/S			EC
FL12	1	1	20	19	20525		MAJESTIC		ST	649-102019	1535	1	1	RES	5/8"	W/S			EC
FL12	1	1	20	20	20517		MAJESTIC		ST	649-102020	1540	1	1	RES	5/8"	W/S			EC
FL12	1	1	20	21	20509		MAJESTIC		ST	649-102021	1545	1	1	RES	5/8"	W/S			EC

CY	RTE	UNIT	BLK	LOT#	NUMBER	PRE	STREET	SUF	APT	ACCT #	SEQ	ACCTS	UNITS	TYPE	MTR	SV	TAP FEE	NB DATE	CSR
FL12	1	1	20	29	20345		MAJESTIC	ST		649-102029	1585	1	1	RES	5/8"	W/S			EC
FL12	1	1	20	30	20337		MAJESTIC	ST		649-102030	1590	1	1	RES	5/8"	W/S			EC
FL12	1	1	20	31	20329		MAJESTIC	ST		649-102031	1595	1	1	RES	5/8"	W/S			EC
FL12	1	1	20	33	20313		MAJESTIC	ST		649-102033	1605	1	1	RES	5/8"	W/S			EC
FL12	1	1	20	34	20305		MAJESTIC	ST		649-102034	1610	1	1	RES	5/8"	W/S			EC
FL12	1	1	24	1	2281		ARDON	AVE		649-102401	2145	1	1	RES	5/8"	W/S			EC
FL12	1	1	24	2	2273		ARDON	AVE		649-102402	2150	1	1	RES	5/8"	W/S			EC
FL12	1	1	24	4	2257		ARDON	AVE		649-102404	2160	1	1	RES	5/8"	W/S			EC
FL12	1	1	24	5	2249		ARDON	AVE		649-102405	2165	1	1	RES	5/8"	W/S		2/27/1996	EC
FL12	1	1	24	7	2233		ARDON	AVE		649-102407	2175	1	1	RES	5/8"	W/S			EC
FL12	1	1	24	11	2208		ARCHER	BLVD		649-102411	2195	1	1	RES	5/8"	W/S			EC
FL12	1	1	24	12	2224		ARCHER	BLVD		649-102412	2200	1	1	RES	5/8"	W/S			EC
FL12	1	1	24	15	2240		ARCHER	BLVD		649-102415	2215	1	1	RES	5/8"	W/S			EC
FL12	1	1	24	18	2264		ARCHER	BLVD		649-102418	2230	1	1	RES	5/8"	W/S			EC
FL12	1	1	24	19	2272		ARCHER	BLVD		649-102419	2235	1	1	RES	5/8"	W/S			EC
FL12	1	1	24	20	2280		ARCHER	BLVD		649-102420	2240	1	1	RES	5/8"	W/S			EC
FL12	1	1	25	1	20330		MAJESTIC	ST		649-102501	2055	1	1	RES	5/8"	W/S			EC
FL12	1	1	25	3	20416		MAJESTIC	ST		649-102503	2065	1	1	RES	5/8"	W/S			EC
FL12	1	1	25	4	20420		MAJESTIC	ST		649-102504	2070	1	1	RES	5/8"	W/S			EC
FL12	1	1	25	6	20432		MAJESTIC	ST		649-102506	2080	1	1	RES	5/8"	W/S			EC
FL12	1	1	25	7	20440		MAJESTIC	ST		649-102507	2085	1	1	RES	5/8"	W/S			EC
FL12	1	1	25	8			MAJESTIC	ST		649-102508	2090	1	1	RES	5/8"	W/S	\$3,000.00	6/29/1999	KS
FL12	1	1	25	10	2218		ARDON	AVE		649-102510	2100	1	1	RES	5/8"	W/S			EC
FL12	1	1	25	11	2226		ARDON	AVE		649-102511	2105	1	1	RES	5/8"	W/S			EC
FL12	1	1	26	7	2223		BAGDAD	AVE		649-102607	2015	1	1	RES	5/8"	W/S			EC
FL12	1	1	26	8	2215		BAGDAD	AVE		649-102608	2020	1	1	RES	5/8"	W/S			EC
FL12	1	1	26	9	2207		BAGDAD	AVE		649-102609	2025	1	1	RES	5/8"	W/S			EC
FL12	1	1	26	10	2206		BABBITT	AVE		649-102610	2030	1	1	RES	5/8"	W/S			EC
FL12	1	1	26	11	2216		BABBITT	AVE		649-102611	2035	1	1	RES	5/8"	W/S			EC
FL12	1	1	26	12	2222		BABBITT	AVE		649-102612	2040	1	1	RES	5/8"	W/S		11/19/1996	EC
FL12	1	1	26	15	2254		BABBITT	AVE		649-102615	2045	1	1	RES	5/8"	W/S	\$3,000.00	1/26/1999	EC
FL12	1	1	26	17	2262		BABBITT	AVE		649-102617	2050	1	1	RES	5/8"	W/S			EC
FL12	1	1	27	1	2273		BAKER	AVE		649-102701	1895	1	1	RES	5/8"	W/S			EC
FL12	1	1	27	2	2265		BAKER	AVE		649-102702	1900	1	1	RES	5/8"	W/S			EC
FL12	1	1	27	5	2241		BAKER	AVE		649-102705	1915	1	1	RES	5/8"	W/S			EC
FL12	1	1	27	6	2233		BAKER	AVE		649-102706	1920	1	1	RES	5/8"	W/S			EC
FL12	1	1	27	7	2225		BAKER	AVE		649-102707	1925	1	1	RES	5/8"	W/S			EC
FL12	1	1	27	8	2217		BAKER	AVE		649-102708	1930	1	1	RES	5/8"	W/S			EC
FL12	1	1	27	9	2209		BAKER	AVE		649-102709	1935	1	1	RES	5/8"	W/S			EC
FL12	1	1	27	10	2208		BAGDAD	AVE		649-102710	1940	1	1	RES	5/8"	W/S			EC
FL12	1	1	27	11	2216		BAGDAD	AVE		649-102711	1945	1	1	RES	5/8"	W/S			EC
FL12	1	1	27	17	2264		BAGDAD	AVE		649-102717	1975	1	1	RES	5/8"	W/S		2/27/1996	EC
FL12	1	1	28	1	2265		BALLARD	AVE		649-102801	1805	1	1	RES	5/8"	W/S			EC
FL12	1	1	28	3	2249		BALLARD	AVE		649-102803	1815	1	1	RES	5/8"	W/S			EC
FL12	1	1	28	4	2241		BALLARD	AVE		649-102804	1820	1	1	RES	5/8"	W/S			EC
FL12	1	1	28	5	2233		BALLARD	AVE		649-102805	1825	1	1	RES	5/8"	W/S			EC
FL12	1	1	28	6	2225		BALLARD	AVE		649-102806	1830	1	1	RES	5/8"	W/S			EC
FL12	1	1	28	7	2217		BALLARD	AVE		649-102807	1835	1	1	RES	5/8"	W/S			EC

CY	RTE	UNIT	BLK	LOT#	NUMBER	PRE	STREET	SUF	APT	ACCT #	SEQ	ACCTS	UNITS	TYPE	MTR	SV	TAP FEE	NB DATE	CSR
FL12	1	1	28	8	2209		BALLARD	AVE		649-102808	1840	1	1	RES	5/8"	W/S			EC
FL12	1	1	28	10	2210		BAKER	AVE		649-102810	1850	1	1	RES	5/8"	W/S			EC
FL12	1	1	28	11	2218		BAKER	AVE		649-102811	1855	1	1	RES	5/8"	W/S			EC
FL12	1	1	28	12	2226		BAKER	AVE		649-102812	1860	1	1	RES	5/8"	W/S			EC
FL12	1	1	28	13	2234		BAKER	AVE		649-102813	1865	1	1	RES	5/8"	W/S			EC
FL12	1	1	28	14	2242		BAKER	AVE		649-102814	1870	1	1	RES	5/8"	W/S			EC
FL12	1	1	28	15	2250		BAKER	AVE		649-102815	1875	1	1	RES	5/8"	W/S			EC
FL12	1	1	28	16	2258		BAKER	AVE		649-102816	1880	1	1	RES	5/8"	W/S			EC
FL12	1	1	28	17	2266		BAKER	AVE		649-102817	1885	1	1	RES	5/8"	W/S			EC
FL12	1	1	28	18	2274		BAKER	AVE		649-102818	1890	1	1	RES	5/8"	W/S			EC
FL12	1	1	29	1	2267		BANCROFT	BLVD		649-102901	1715	1	1	RES	5/8"	W/S			EC
FL12	1	1	29	4	2243		BANCROFT	BLVD		649-102904	1730	1	1	RES	5/8"	W/S			EC
FL12	1	1	29	5	2235		BANCROFT	BLVD		649-102905	1735	1	1	RES	5/8"	W/S			EC
FL12	1	1	29	6	2227		BANCROFT	BLVD		649-102906	1740	1	1	RES	5/8"	W/S			EC
FL12	1	1	29	9	2203		BANCROFT	BLVD		649-102909	1755	1	1	RES	5/8"	W/S			EC
FL12	1	1	29	10	2202		BALLARD	AVE		649-102910	1760	1	1	RES	5/8"	W/S			EC
FL12	1	1	29	11	2210		BALLARD	AVE		649-102911	1765	1	1	RES	5/8"	W/S			EC
FL12	1	1	29	12	2218		BALLARD	AVE		649-102912	1770	1	1	RES	5/8"	W/S			EC
FL12	1	1	29	13	2226		BALLARD	AVE		649-102913	1775	1	1	RES	5/8"	W/S			EC
FL12	1	1	29	14	2234		BALLARD	AVE		649-102914	1780	1	1	RES	5/8"	W/S			EC
FL12	1	1	29	15	2242		BALLARD	AVE		649-102915	1785	1	1	RES	5/8"	W/S			EC
FL12	1	1	29	16	2250		BALLARD	AVE		649-102916	1790	1	1	RES	5/8"	W/S			EC
FL12	1	1	29	17	2258		BALLARD	AVE		649-102917	1795	1	1	RES	5/8"	W/S			EC
FL12	1	1	29	18	2266		BALLARD	AVE		649-102918	1800	1	1	RES	5/8"	W/S			EC
FL12	1	1	18A	1A	20701		MACON	PKWY		649-111811	1030	1	1	DUPL	5/8"	W/S			EC
FL12	1	1	18A	1B	20703		MACON	PKWY		649-111812	1035	1	1	DUPL	5/8"	W/S			EC
FL12	1	1	19A	6	2104		BANCROFT	BLVD		649-111906	1180	1	1	RES	5/8"	W/S			EC
FL12	2	1A	29A	10	2302		BANCROFT	BLVD		649-112910	2585	1	1	RES	5/8"	W/S			EC
FL12	2	1A	29A	11	2310		BANCROFT	BLVD		649-112911	2590	1	1	RES	5/8"	W/S			EC
FL12	2	1A	29A	12	2314		BANCROFT	BLVD		649-112912	2595	1	1	RES	5/8"	W/S			EC
FL12	2	1A	29A	13	2326		BANCROFT	BLVD		649-112913	2600	1	1	RES	5/8"	W/S			EC
FL12	2	1A	29A	14	2334		BANCROFT	BLVD		649-112914	2605	1	1	RES	5/8"	W/S			EC
FL12	2	1A	30	3	2345		BANCROFT	BLVD		649-113003	2550	1	1	RES	5/8"	W/S	\$3,000.00	8/11/1998	EC
FL12	2	1A	30	7	2325		BANCROFT	BLVD		649-113007	2570	1	1	RES	5/8"	W/S			EC
FL12	2	1A	30	9	2309		BANCROFT	BLVD		649-113009	2580	1	1	RES	5/8"	W/S		6/4/1996	EC
FL12	2	1A	64	3			BANCROFT	BLVD		649-116403	3395	1	1	RES	5/8"	W/S	\$3,000.00	7/20/1999	KS
FL12	2	1A	64	5	2633		BANCROFT	BLVD		649-116405	3405	1	1	RES	5/8"	W/S			EC
FL12	2	1A	64	7			BANCROFT	BLVD		649-116407	3415	1	1	RES	5/8"	W/S	\$3,000.00	1/26/1999	EC
FL12	2	1A	64	12	2545		BANCROFT	BLVD		649-116412	3440	1	1	RES	5/8"	W/S			EC
FL12	2	1A	68	2	2426		BANCROFT	BLVD		649-116802	2620	1	1	RES	5/8"	W/S			EC
FL12	2	1A	68	3	2432		BANCROFT	BLVD		649-116803	2625	1	1	RES	5/8"	W/S			EC
FL12	2	1A	68	4	2438		BANCROFT	BLVD		649-116804	2630	1	1	RES	5/8"	W/S			EC
FL12	2	1A	68	5	2444		BANCROFT	BLVD		649-116805	2635	1	1	RES	5/8"	W/S			EC
FL12	2	1A	68	6	2450		BANCROFT	BLVD		649-116806	2930	1	1	RES	5/8"	W/S			EC
FL12	2	1A	68	9	2516		BANCROFT	BLVD		649-116809	2945	1	1	RES	5/8"	W/S			EC
FL12	2	1A	68	12	2546		BANCROFT	BLVD		649-116812	3190	1	1	RES	5/8"	W/S			EC
FL12	2	1A	68	14	2562		BANCROFT	BLVD		649-116814	3200	1	1	RES	5/8"	W/S		12/10/1996	EC
FL12	2	1A	70	9	2930		BANCROFT	BLVD		649-117009	3280	1	1	RES	5/8"	W/S	\$3,000.00	1/26/1999	EC

CY	RTE	UNIT	BLK	LOT#	NUMBER	PRE	STREET	SUF	APT	ACCT #	SEQ	ACCTS	UNITS	TYPE	MTR	SV	TAP FEE	NB DATE	CSR
FL12	2	1A	74	2			BANCROFT		BLVD	649-117402	3230	1	1	RES	5/8"	W/S	\$3,000.00	9/1/1998	EC
FL12	2	1A	76	8	2751		BANCROFT		BLVD	649-117608	3350	1	1	RES	5/8"	W/S			EC
FL12	2	1A	65	9	2747		BANCROFT		BLVD	649-117609	3355	1	1	RES	5/8"	W/S	\$3,000.00	4/6/1999	EC
FL12	1	1	21	5A	20642		MACON		PKWY	649-121051	1390	1	1	DUPL	5/8"	W/S			EC
FL12	1	1	21	5B	20644		MACON		PKWY	649-121052	1395	1	1	DUPL	5/8"	W/S			EC
FL12	1	1	21	6A	20648		MACON		PKWY	649-121061	1400	1	1	DUPL	5/8"	W/S			EC
FL12	1	1	21	6B	20650		MACON		PKWY	649-121062	1405	1	1	DUPL	5/8"	W/S			EC
FL12	1	1	21	7A	20656		MACON		PKWY	649-121071	1410	1	1	DUPL	5/8"	W/S			EC
FL12	1	1	21	7B	20658		MACON		PKWY	649-121072	1415	1	1	DUPL	5/8"	W/S			EC
FL12	1	1	21	13A	20653		MAJESTIC		ST	649-121131	1470	1	1	DUPL	5/8"	W/S			EC
FL12	1	1	21	13B	20651		MAJESTIC		ST	649-121132	1475	1	1	DUPL	5/8"	W/S			EC
FL12	1	1	29A	2	2212		BANCROFT		BLVD	649-122902	1675	1	1	RES	5/8"	W/S			EC
FL12	1	1	29A	3	2220		BANCROFT		BLVD	649-122903	1680	1	1	RES	5/8"	W/S			EC
FL12	1	1	29A	5	2236		BANCROFT		BLVD	649-122905	1690	1	1	RES	5/8"	W/S			EC
FL12	1	1	29A	7	2250		BANCROFT		BLVD	649-122907	1700	1	1	RES	5/8"	W/S			EC
FL12	1	1	23	1A	20614		MAJESTIC		ST	649-123011	2435	1	1	DUPL	5/8"	W/S			EC
FL12	1	1	23	1B	20612		MAJESTIC		ST	649-123012	2440	1	1	DUPL	5/8"	W/S			EC
FL12	1	1	23	2A	20622		MAJESTIC		ST	649-123021	2425	1	1	DUPL	5/8"	W/S			EC
FL12	1	1	23	2B	20620		MAJESTIC		ST	649-123022	2430	1	1	DUPL	5/8"	W/S			EC
FL12	1	1	23	3A	20630		MAJESTIC		ST	649-123031	2415	1	1	DUPL	5/8"	W/S			EC
FL12	1	1	23	3B	20628		MAJESTIC		ST	649-123032	2420	1	1	DUPL	5/8"	W/S			EC
FL12	1	1	23	4A	20638		MAJESTIC		ST	649-123041	2405	1	1	DUPL	5/8"	W/S			EC
FL12	1	1	23	4B	20636		MAJESTIC		ST	649-123042	2410	1	1	DUPL	5/8"	W/S			EC
FL12	1	1	23	5A	20646		MAJESTIC		ST	649-123051	2395	1	1	DUPL	5/8"	W/S			EC
FL12	1	1	23	5B	20644		MAJESTIC		ST	649-123052	2400	1	1	DUPL	5/8"	W/S			EC
FL12	1	1	23	6A	20654		MAJESTIC		ST	649-123061	2385	1	1	DUPL	5/8"	W/S			EC
FL12	1	1	23	6B	20652		MAJESTIC		ST	649-123062	2390	1	1	DUPL	5/8"	W/S			EC
FL12	1	1	23	7A	20662		MAJESTIC		ST	649-123071	2375	1	1	DUPL	5/8"	W/S			EC
FL12	1	1	23	7B	20660		MAJESTIC		ST	649-123072	2380	1	1	DUPL	5/8"	W/S			EC
FL12	1	1	23	8A	20670		MAJESTIC		ST	649-123081	2365	1	1	DUPL	5/8"	W/S			EC
FL12	1	1	23	8B	20668		MAJESTIC		ST	649-123082	2370	1	1	DUPL	5/8"	W/S			EC
FL12	1	1	23	9A	20678		MAJESTIC		ST	649-123091	2355	1	1	DUPL	5/8"	W/S			EC
FL12	1	1	23	9B	20676		MAJESTIC		ST	649-123092	2360	1	1	DUPL	5/8"	W/S			EC
FL12	1	1	23	10A	20669		MALLARD		PKWY	649-123101	2345	1	1	DUPL	5/8"	W/S			EC
FL12	1	1	23	10B	20667		MALLARD		PKWY	649-123102	2350	1	1	DUPL	5/8"	W/S			EC
FL12	1	1	23	11A	20657		MALLARD		PKWY	649-123111	2335	1	1	DUPL	5/8"	W/S			EC
FL12	1	1	23	11B	20659		MALLARD		PKWY	649-123112	2340	1	1	DUPL	5/8"	W/S			EC
FL12	1	1	23	15	20629		MALLARD		PKWY	649-123151	2300	1	1	RES	5/8"	W/S			EC
FL12	1	1	23	16	20621		MALLARD		PKWY	649-123161	2295	1	1	RES	5/8"	W/S			EC
FL12	1	1	24A	2	2215		ARCHER		BLVD	649-124102	2265	1	1	RES	5/8"	W/S			EC
FL12	1	1	24A	3	2223		ARCHER		BLVD	649-124103	2260	1	1	RES	5/8"	W/S	\$3,000.00	12/1/1998	EC
FL12	1	1	24A	4	2231		ARCHER		BLVD	649-124104	2255	1	1	RES	5/8"	W/S			EC
FL12	1	1	24A	6	2247		ARCHER		BLVD	649-124106	2245	1	1	RES	5/8"	W/S			EC
FL12	2	1A	68	12	2546		BANCROFT		BLVD	649-168120	3165	1	1	IRRG	5/8"	W		7/8/1997	EC
FL12	2	2	39	14	20522		MARLIN		ST	649-203914	2765	1	1	RES	5/8"	W/S			EC
FL12	2	2	39	15	20530		MARLIN		ST	649-203915	2770	1	1	RES	5/8"	W/S			EC
FL12	2	2	39	17	2374		ARCHER		BLVD	649-203917	2780	1	1	RES	5/8"	W/S			EC
FL12	2	2	39	18	20547		MAXIM		PKWY	649-203918	2790	1	1	RES	5/8"	W/S			EC

CY	RTE	UNIT	BLK	LOT#	NUMBER	PRE	STREET	SUF	APT	ACCT #	SEQ	ACCTS	UNITS	TYPE	MTR	SV	TAP FEE	NB DATE	CSR
FL12	2	2	39	19	20539		MAXIM		PKWY	649-203919	2795	1	1	RES	5/8*	W/S			EC
FL12	2	2	39	20	20531		MAXIM		PKWY	649-203920	2800	1	1	RES	5/8*	W/S			EC
FL12	2	2	40	1	2301		BABBITT		AVE	649-204001	2160	1	1	RES	5/8*	W/S		11/18/1997	EC
FL12	2	2	40	2	2309		BABBITT		AVE	649-204002	2155	1	1	RES	5/8*	W/S		1/6/1998	EC
FL12	2	2	40	3	2317		BABBITT		AVE	649-204003	2150	1	1	RES	5/8*	W/S		10/28/1997	EC
FL12	2	2	40	4	2325		BABBITT		AVE	649-204004	2145	1	1	RES	5/8*	W/S	\$3,000.00	6/9/1998	EC
FL12	2	2	40	5	20331		MARDI GRAS		ST	649-204005	2140	1	1	RES	5/8*	W/S		4/15/1997	EC
FL12	2	2	40	7	20347		MARDI GRAS		ST	649-204007	2130	1	1	RES	5/8*	W/S		7/15/1997	EC
FL12	2	2	40	8	20355		MARDI GRAS		ST	649-204008	2125	1	1	RES	5/8*	W/S		1/6/1998	EC
FL12	2	2	40	9	20363		MARDI GRAS		ST	649-204009	2120	1	1	RES	5/8*	W/S		9/9/1997	EC
FL12	2	2	40	10	20371		MARDI GRAS		ST	649-204010	2115	1	1	RES	5/8*	W/S		5/20/1997	EC
FL12	2	2	42	2	2419		AMBERLY		AVE	649-204202	1740	1	1	RES	5/8*	W/S			EC
FL12	2	2	42	3	2411		AMBERLY		AVE	649-204203	1745	1	1	RES	5/8*	W/S			EC
FL12	2	2	42	4	2403		AMBERLY		AVE	649-204204	1750	1	1	RES	5/8*	W/S			EC
FL12	2	2	42	5	2363		AMBERLY		AVE	649-204205	1755	1	1	RES	5/8*	W/S			EC
FL12	2	2	42	7	2347		AMBERLY		AVE	649-204207	1765	1	1	RES	5/8*	W/S			EC
FL12	2	2	42	8	2339		AMBERLY		AVE	649-204208	1770	1	1	RES	5/8*	W/S			EC
FL12	2	2	42	10	2330		ALBION		AVE	649-204210	1690	1	1	RES	5/8*	W/S			EC
FL12	2	2	42	11	2338		ALBION		AVE	649-204211	1695	1	1	RES	5/8*	W/S			EC
FL12	2	2	42	12	2346		ALBION		AVE	649-204212	1700	1	1	RES	5/8*	W/S			EC
FL12	2	2	42	13	2354		ALBION		AVE	649-204213	1705	1	1	RES	5/8*	W/S	\$3,000.00	8/4/1999	KS
FL12	2	2	42	14	2362		ALBION		AVE	649-204214	1710	1	1	RES	5/8*	W/S			EC
FL12	2	2	42	15	2402		ALBION		AVE	649-204215	1715	1	1	RES	5/8*	W/S			EC
FL12	2	2	42	16	2426		ALBION		AVE	649-204216	1720	1	1	RES	5/8*	W/S			EC
FL12	2	2	42	17	2418		ALBION		AVE	649-204217	1725	1	1	RES	5/8*	W/S			EC
FL12	2	2	42	18	2410		ALBION		AVE	649-204218	1730	1	1	RES	5/8*	W/S			EC
FL12	2	2	43	1	2429		ARCHER		BLVD	649-204301	1905	1	1	RES	5/8*	W/S			EC
FL12	2	2	43	2	2421		ARCHER		BLVD	649-204302	1910	1	1	RES	5/8*	W/S			EC
FL12	2	2	43	3	2413		ARCHER		BLVD	649-204303	1915	1	1	RES	5/8*	W/S			EC
FL12	2	2	43	4	2405		ARCHER		BLVD	649-204304	1920	1	1	RES	5/8*	W/S			EC
FL12	2	2	43	5	2365		ARCHER		BLVD	649-204305	1925	1	1	RES	5/8*	W/S			EC
FL12	2	2	43	6	2357		ARCHER		BLVD	649-204306	1930	1	1	RES	5/8*	W/S			EC
FL12	2	2	43	7	2349		ARCHER		BLVD	649-204307	1935	1	1	RES	5/8*	W/S			EC
FL12	2	2	43	8	2341		ARCHER		BLVD	649-204308	1940	1	1	RES	5/8*	W/S			EC
FL12	2	2	43	9	2333		ARCHER		BLVD	649-204309	1945	1	1	RES	5/8*	W/S			EC
FL12	2	2	43	10	2332		AMBERLY		AVE	649-204310	1860	1	1	RES	5/8*	W/S			EC
FL12	2	2	43	11	2340		AMBERLY		AVE	649-204311	1865	1	1	RES	5/8*	W/S			EC
FL12	2	2	43	14	2362		AMBERLY		AVE	649-204314	1880	1	1	RES	5/8*	W/S			EC
FL12	2	2	43	15	2404		AMBERLY		AVE	649-204315	1885	1	1	RES	5/8*	W/S			EC
FL12	2	2	43	16	2412		AMBERLY		AVE	649-204316	1890	1	1	RES	5/8*	W/S			EC
FL12	2	2	43	17	2420		AMBERLY		AVE	649-204317	1895	1	1	RES	5/8*	W/S			EC
FL12	2	2	43	18	2428		AMBERLY		AVE	649-204318	1900	1	1	RES	5/8*	W/S			EC
FL12	2	2	44	1	2359		ARDON		AVE	649-204401	2000	1	1	RES	5/8*	W/S			EC
FL12	2	2	44	2	2351		ARDON		AVE	649-204402	2005	1	1	RES	5/8*	W/S			EC
FL12	2	2	44	3	2343		ARDON		AVE	649-204403	2010	1	1	RES	5/8*	W/S			EC
FL12	2	2	44	4	2335		ARDON		AVE	649-204404	2015	1	1	RES	5/8*	W/S			EC
FL12	2	2	44	5	2327		ARDON		AVE	649-204405	2020	1	1	RES	5/8*	W/S			EC
FL12	2	2	44	6	2319		ARDON		AVE	649-204406	2025	1	1	RES	5/8*	W/S			EC

CY	RTE	UNIT	BLK	LOT#	NUMBER	PRE	STREET	SUF	APT	ACCT #	SEQ	ACCTS	UNITS	TYPE	MTR	SV	TAP FEE	NB DATE	CSR
FL12	2	2	44	9	2310		ARCHER		BLVD	649-204409	1960	1	1	RES	5/8"	W/S			EC
FL12	2	2	44	10	2318		ARCHER		BLVD	649-204410	1965	1	1	RES	5/8"	W/S			EC
FL12	2	2	44	11			ARCHER		BLVD	649-204411	1970	1	1	RES	5/8"	W/S	\$3,000.00	7/7/1998	EC
FL12	2	2	44	13	2342		ARCHER		BLVD	649-204413	1980	1	1	RES	5/8"	W/S			EC
FL12	2	2	44	14	2350		ARCHER		BLVD	649-204414	1985	1	1	RES	5/8"	W/S			EC
FL12	2	2	44	16	2366		ARCHER		BLVD	649-204416	1995	1	1	RES	5/8"	W/S			EC
FL12	2	2	45	3	2245		AMBERLY		AVE	649-204503	1790	1	1	RES	5/8"	W/S			EC
FL12	2	2	45	9	2204		ALBION		AVE	649-204509	1650	1	1	RES	5/8"	W/S			EC
FL12	2	2	45	10	2212		ALBION		AVE	649-204510	1655	1	1	RES	5/8"	W/S			EC
FL12	2	2	45	11	2220		ALBION		AVE	649-204511	1660	1	1	RES	5/8"	W/S			EC
FL12	2	2	45	12	2228		ALBION		AVE	649-204512	1665	1	1	RES	5/8"	W/S			EC
FL12	2	2	45	13	2236		ALBION		AVE	649-204513	1670	1	1	RES	5/8"	W/S			EC
FL12	2	2	45	14	2244		ALBION		AVE	649-204514	1675	1	1	RES	5/8"	W/S			EC
FL12	2	2	45	15	2252		ALBION		AVE	649-204515	1680	1	1	RES	5/8"	W/S			EC
FL12	2	2	45	16	2260		ALBION		AVE	649-204516	1685	1	1	RES	5/8"	W/S			EC
FL12	2	2	46	1	2425		ALBION		AVE	649-204601	1560	1	1	RES	5/8"	W/S			EC
FL12	2	2	46	2	2417		ALBION		AVE	649-204602	1565	1	1	RES	5/8"	W/S			EC
FL12	2	2	46	4	2401		ALBION		AVE	649-204604	1575	1	1	RES	5/8"	W/S			EC
FL12	2	2	46	5	2361		ALBION		AVE	649-204605	1580	1	1	RES	5/8"	W/S			EC
FL12	2	2	46	6	2353		ALBION		AVE	649-204606	1585	1	1	RES	5/8"	W/S			EC
FL12	2	2	46	7	2345		ALBION		AVE	649-204607	1590	1	1	RES	5/8"	W/S			EC
FL12	2	2	46	8	2337		ALBION		AVE	649-204608	1595	1	1	RES	5/8"	W/S			EC
FL12	2	2	46	9	2329		ALBION		AVE	649-204609	1600	1	1	RES	5/8"	W/S			EC
FL12	2	2	46	10	2267		ALBION		AVE	649-204610	1605	1	1	RES	5/8"	W/S			EC
FL12	2	2	46	11	2259		ALBION		AVE	649-204611	1610	1	1	RES	5/8"	W/S			EC
FL12	2	2	46	13	2243		ALBION		AVE	649-204613	1620	1	1	RES	5/8"	W/S			EC
FL12	2	2	46	14	2235		ALBION		AVE	649-204614	1625	1	1	RES	5/8"	W/S			EC
FL12	2	2	46	15	2227		ALBION		AVE	649-204615	1630	1	1	RES	5/8"	W/S			EC
FL12	2	2	46	16	2219		ALBION		AVE	649-204616	1635	1	1	RES	5/8"	W/S			EC
FL12	2	2	46	17	2211		ALBION		AVE	649-204617	1640	1	1	RES	5/8"	W/S			EC
FL12	2	2	46	18	2203		ALBION		AVE	649-204618	1645	1	1	RES	5/8"	W/S			EC
FL12	2	2	24A	8	2263		ARCHER		BLVD	649-224108	1950	1	1	RES	5/8"	W/S			EC
FL12	2	2	24A	13	2230		AMBERLY		AVE	649-224113	1835	1	1	RES	5/8"	W/S			EC
FL12	2	2	24A	14	2222		AMBERLY		AVE	649-224114	1830	1	1	RES	5/8"	W/S			EC
FL12	2	2	24A	15	2214		AMBERLY		AVE	649-224115	1825	1	1	RES	5/8"	W/S			EC
FL12	2	2	24A	16	2206		AMBERLY		AVE	649-224116	1820	1	1	RES	5/8"	W/S			EC
FL12	2	2	39	18	20547		MAXIM		PKWY	649-241050	2135	1	1	IRRG	5/8"	W			EC
FL12	3	2	41	5	20835		MAXIM		PKWY	649-241050	2135	1	1	IRRG	5/8"	W			EC
FL12	3	2	41	6	20109		MELVILLE		ST	649-241060	2140	1	1	IRRG	5/8"	W			EC
FL12	3	2	41	6A	2506		ALBION		AVE	649-241061	2145	1	1	RES	5/8"	W/S			EC
FL12	3	2	41	6B	2508		ALBION		AVE	649-241062	2150	1	1	RES	5/8"	W/S			EC
FL12	3	2	41	7	2512		ALBION		AVE	649-241070	2155	1	1	IRRG	5/8"	W			EC
FL12	3	2	41	7A	2512		ALBION		AVE	649-241071	2160	1	1	RES	5/8"	W/S			EC
FL12	3	2	41	7B	2514		ALBION		AVE	649-241072	2165	1	1	RES	5/8"	W/S			EC
FL12	3	2	41	8A	2520		ALBION		AVE	649-241081	2170	1	1	TPLX	5/8"	W/S			EC
FL12	3	2	41	8B	2522		ALBION		AVE	649-241082	2175	1	1	TPLX	5/8"	W/S			EC
FL12	3	2	41	8C	2524		ALBION		AVE	649-241083	2180	1	1	TPLX	5/8"	W/S			EC
FL12	3	2	41	9A	2532		ALBION		AVE	649-241091	2185	1	1	DUPL	5/8"	W/S			EC

CY	RTE	UNIT	BLK	LOT#	NUMBER	PRE	STREET	SUF	APT	ACCT #	SEQ	ACCTS	UNITS	TYPE	MTR	SV	TAP	FEE	NB	DATE	CSR
FL12	3	2	41	9B	2530		ALBION	AVE		649-241092	2190	1	1	DUPL	5/8"	W/S					EC
FL12	3	2	41	10	2524		ALBION	AVE		649-241100	2195	1	1	IRRG	5/8"	W					EC
FL12	3	2	41	10A	2546		ALBION	AVE		649-241101	2200	1	1	DUPL	5/8"	W/S					EC
FL12	3	2	41	10B	2548		ALBION	AVE		649-241102	2205	1	1	DUPL	5/8"	W/S					EC
FL12	3	2	41	11	2552		ALBION	AVE		649-241110	2210	1	1	IRRG	5/8"	W					EC
FL12	3	2	41	11A	2552		ALBION	AVE		649-241111	2215	1	1	DUPL	5/8"	W/S					EC
FL12	3	2	41	11B	2554		ALBION	AVE		649-241112	2220	1	1	DUPL	5/8"	W/S					EC
FL12	3	2	41	12	2566		ALBION	AVE		649-241120	2225	1	1	IRRG	5/8"	W					EC
FL12	3	2	41	12A	2562		ALBION	AVE		649-241121	2230	1	1	TPLX	5/8"	W/S					EC
FL12	3	2	41	12B	2564		ALBION	AVE		649-241122	2235	1	1	TPLX	5/8"	W/S					EC
FL12	3	2	41	12C	2566		ALBION	AVE		649-241123	2240	1	1	TPLX	5/8"	W/S					EC
FL12	3	2	41	13A	2602		ALBION	AVE		649-241131	2245	1	1	TPLX	5/8"	W/S					EC
FL12	3	2	41	13B	2604		ALBION	AVE		649-241132	2250	1	1	TPLX	5/8"	W/S					EC
FL12	3	2	41	13C	2606		ALBION	AVE		649-241133	2255	1	1	TPLX	5/8"	W/S					EC
FL12	3	2	41	14	2610		ALBION	AVE		649-241140	2260	1	1	IRRG	5/8"	W					EC
FL12	3	2	41	14A	2610		ALBION	AVE		649-241141	2265	1	1	TPLX	5/8"	W/S					EC
FL12	3	2	41	14B	2612		ALBION	AVE		649-241142	2270	1	1	TPLX	5/8"	W/S					EC
FL12	3	2	41	14C	2614		ALBION	AVE		649-241143	2275	1	1	TPLX	5/8"	W/S					EC
FL12	3	2	41	15A	2626		ALBION	AVE		649-241151	2280	1	1	TPLX	5/8"	W/S					EC
FL12	3	2	41	15B	2628		ALBION	AVE		649-241152	2285	1	1	TPLX	5/8"	W/S					EC
FL12	3	2	41	15C	2630		ALBION	AVE		649-241153	2290	1	1	TPLX	5/8"	W/S					EC
FL12	3	2	41	16	2634		ALBION	AVE		649-241160	2295	1	1	IRRG	5/8"	W					EC
FL12	3	2	41	16A	2634		ALBION	AVE		649-241161	2300	1	1	TPLX	5/8"	W/S					EC
FL12	3	2	41	16B	2636		ALBION	AVE		649-241162	2305	1	1	TPLX	5/8"	W/S					EC
FL12	3	2	41	16C	2638		ALBION	AVE		649-241163	2310	1	1	TPLX	5/8"	W/S					EC
FL12	3	2	41	17C	2642		ALBION	AVE		649-241173	2315	1	1	DUPL	5/8"	W/S					EC
FL12	3	2	41	17D	2640		ALBION	AVE		649-241174	2320	1	1	DUPL	5/8"	W/S					EC
FL12	3	2	41	18	2650		ALBION	AVE		649-241180	2325	1	1	IRRG	5/8"	W					EC
FL12	3	2	41	18A	2650		ALBION	AVE		649-241181	2330	1	1	DUPL	5/8"	W/S					EC
FL12	3	2	41	18B	2648		ALBION	AVE		649-241182	2335	1	1	DUPL	5/8"	W/S					EC
FL12	3	2	41	19A	2649		ALBION	AVE		649-241191	2340	1	1	DUPL	5/8"	W/S					EC
FL12	3	2	41	19B	2651		ALBION	AVE		649-241192	2345	1	1	DUPL	5/8"	W/S					EC
FL12	3	2	41	20	2643		ALBION	AVE		649-241200	2350	1	1	IRRG	5/8"	W					EC
FL12	3	2	41	20C	2643		ALBION	AVE		649-241203	2355	1	1	DUPL	5/8"	W/S					EC
FL12	3	2	41	20D	2641		ALBION	AVE		649-241204	2360	1	1	DUPL	5/8"	W/S					EC
FL12	3	2	41	21C	2635		ALBION	AVE		649-241213	2365	1	1	DUPL	5/8"	W/S					EC
FL12	3	2	41	21D	2633		ALBION	AVE		649-241214	2370	1	1	DUPL	5/8"	W/S					EC
FL12	3	2	41	24	2611		ALBION	AVE		649-241240	2415	1	1	IRRG	5/8"	W					EC
FL12	3	2	41	24A	2611		ALBION	AVE		649-241241	2400	1	1	DUPL	5/8"	W/S					EC
FL12	3	2	41	24B	2609		ALBION	AVE		649-241242	2405	1	1	DUPL	5/8"	W/S					EC
FL12	3	2	41	26A	2563		ALBION	AVE		649-241261	2420	1	1	DUPL	5/8"	W/S					EC
FL12	3	2	41	26B	2565		ALBION	AVE		649-241262	2425	1	1	DUPL	5/8"	W/S					EC
FL12	3	2	41	27	2553		ALBION	AVE		649-241270	2430	1	1	IRRG	5/8"	W					EC
FL12	3	2	41	27A	2553		ALBION	AVE		649-241271	2435	1	1	DUPL	5/8"	W/S					EC
FL12	3	2	41	27B	2551		ALBION	AVE		649-241272	2440	1	1	DUPL	5/8"	W/S					EC
FL12	3	2	41	33	2551		ALBION	AVE		649-241330	2445	1	1	IRRG	5/8"	W					EC
FL12	3	2	41	33A	2505		ALBION	AVE		649-241331	2500	1	1	DUPL	5/8"	W/S					EC
FL12	3	2	41	33B	2501		ALBION	AVE		649-241332	2505	1	1	DUPL	5/8"	W/S					EC

CY	RTE	UNIT	BLK	LOT#	NUMBER PRE	STREET	SUF	APT	ACCT #	SEQ	ACCTS	UNITS	TYPE	MTR	SV	TAP FEE	NB DATE	CSR
FL12	2	3	22	11	20745	MALLARD		PKWY	649-302211	1050	1	1	RES	5/8"	W/S			EC
FL12	2	3	46	19	20706	MALLARD		PKWY	649-304619	1440	1	1	RES	5/8"	W/S			EC
FL12	2	3	46	20	20714	MALLARD		PKWY	649-304620	1445	1	1	RES	5/8"	W/S			EC
FL12	2	3	46	22	20726	MALLARD		PKWY	649-304622	1455	1	1	RES	5/8"	W/S			EC
FL12	2	3	46	23	20730	MALLARD		PKWY	649-304623	1460	1	1	RES	5/8"	W/S			EC
FL12	2	3	46	24	2214	ABNEY		AVE	649-304624	1465	1	1	RES	5/8"	W/S			EC
FL12	2	3	46	25	2222	ABNEY		AVE	649-304625	1470	1	1	RES	5/8"	W/S			EC
FL12	2	3	46	26	2230	ABNEY		AVE	649-304626	1475	1	1	RES	5/8"	W/S			EC
FL12	2	3	46	28	2246	ABNEY		AVE	649-304628	1480	1	1	RES	5/8"	W/S			EC
FL12	2	3	46	29	2252	ABNEY		AVE	649-304629	1485	1	1	RES	5/8"	W/S			EC
FL12	2	3	46	30	2322	ALABASTER		AVE	649-304630	1490	1	1	RES	5/8"	W/S			EC
FL12	2	3	46	31	2340	ALABASTER		AVE	649-304631	1495	1	1	RES	5/8"	W/S			EC
FL12	2	3	46	32	2348	ALABASTER		AVE	649-304632	1500	1	1	RES	5/8"	W/S			EC
FL12	2	3	46	33	2356	ALABASTER		AVE	649-304633	1505	1	1	RES	5/8"	W/S			EC
FL12	2	3	46	34	2364	ALABASTER		AVE	649-304634	1510	1	1	RES	5/8"	W/S			EC
FL12	2	3	46	35	2372	ALABASTER		AVE	649-304635	1515	1	1	RES	5/8"	W/S			EC
FL12	2	3	46	36	2380	ALABASTER		AVE	649-304636	1520	1	1	RES	5/8"	W/S			EC
FL12	2	3	46	37	2388	ALABASTER		AVE	649-304637	1525	1	1	RES	5/8"	W/S			EC
FL12	2	3	46	38	2396	ALABASTER		AVE	649-304638	1530	1	1	RES	5/8"	W/S			EC
FL12	2	3	46	39	2404	ALABASTER		AVE	649-304639	1535	1	1	RES	5/8"	W/S			EC
FL12	2	3	46	40	2412	ALABASTER		AVE	649-304640	1540	1	1	RES	5/8"	W/S			EC
FL12	2	3	46	41	2420	ALABASTER		AVE	649-304641	1545	1	1	RES	5/8"	W/S			EC
FL12	2	3	46	42	2428	ALABASTER		AVE	649-304642	1550	1	1	RES	5/8"	W/S			EC
FL12	2	3	46	43	2436	ALABASTER		AVE	649-304643	1555	1	1	RES	5/8"	W/S			EC
FL12	2	3	47	18	2204	ABALONE		BLVD	649-304718	1185	1	1	RES	5/8"	W/S			EC
FL12	2	3	47	19	2228	ABALONE		BLVD	649-304719	1180	1	1	RES	5/8"	W/S			EC
FL12	2	3	47	21	2244	ABALONE		BLVD	649-304721	1170	1	1	RES	5/8"	W/S			EC
FL12	2	3	47	22	2306	ABALONE		BLVD	649-304722	1165	1	1	RES	5/8"	W/S			EC
FL12	2	3	47	23	2314	ABALONE		BLVD	649-304723	1160	1	1	RES	5/8"	W/S			EC
FL12	2	3	47	24	2322	ABALONE		BLVD	649-304724	1155	1	1	RES	5/8"	W/S		2/10/1998	EC
FL12	2	3	47	25	2330	ABALONE		BLVD	649-304725	1150	1	1	RES	5/8"	W/S			EC
FL12	2	3	47	26	2338	ABALONE		BLVD	649-304726	1145	1	1	RES	5/8"	W/S			EC
FL12	2	3	47	27	2346	ABALONE		BLVD	649-304727	1140	1	1	RES	5/8"	W/S			EC
FL12	2	3	47	28	2354	ABALONE		BLVD	649-304728	1135	1	1	RES	5/8"	W/S			EC
FL12	2	3	47	29	2362	ABALONE		BLVD	649-304729	1130	1	1	RES	5/8"	W/S			EC
FL12	2	3	48	1	2305	ABALONE		BLVD	649-304801	1085	1	1	RES	5/8"	W/S			EC
FL12	2	3	48	2	2323	ABALONE		BLVD	649-304802	1090	1	1	RES	5/8"	W/S			EC
FL12	2	3	48	3	2329	ABALONE		BLVD	649-304803	1095	1	1	RES	5/8"	W/S			EC
FL12	2	3	48	4	2339	ABALONE		BLVD	649-304804	1100	1	1	RES	5/8"	W/S			EC
FL12	2	3	48	5	2347	ABALONE		BLVD	649-304805	1105	1	1	RES	5/8"	W/S			EC
FL12	2	3	48	6	2355	ABALONE		BLVD	649-304806	1110	1	1	RES	5/8"	W/S			EC
FL12	2	3	48	7	2363	ABALONE		BLVD	649-304807	1115	1	1	RES	5/8"	W/S			EC
FL12	2	3	49	3	2363	ALABASTER		AVE	649-304903	1415	1	1	RES	5/8"	W/S			EC
FL12	2	3	49	5	2347	ALABASTER		AVE	649-304905	1425	1	1	RES	5/8"	W/S			EC
FL12	2	3	49	6	2339	ALABASTER		AVE	649-304906	1430	1	1	RES	5/8"	W/S			EC
FL12	2	3	49	7	2331	ALABASTER		AVE	649-304907	1435	1	1	RES	5/8"	W/S			EC
FL12	2	3	50	1	20704	MARLIN		ST	649-305001	1325	1	1	RES	5/8"	W/S			EC
FL12	2	3	50	2	20712	MARLIN		ST	649-305002	1330	1	1	RES	5/8"	W/S			EC

CY	RTE	UNIT	BLK	LOT#	NUMBER	PRE	STREET	SUF	APT	ACCT #	SEQ	ACCTS	UNITS	TYPE	MTR	SV	TAP FEE	NB DATE	CSR
FL12	2	3	50	3	20720		MARLIN	ST		649-305003	1335	1	1	RES	5/8"	W/S			EC
FL12	2	3	50	4	20728		MARLIN	ST		649-305004	1340	1	1	RES	5/8"	W/S			EC
FL12	2	3	50	33	20729		MAXIM	PKWY		649-305033	1305	1	1	RES	5/8"	W/S			EC
FL12	2	3	50	34	20721		MAXIM	PKWY		649-305034	1310	1	1	RES	5/8"	W/S			EC
FL12	2	3	50	35	20713		MAXIM	PKWY		649-305035	1315	1	1	RES	5/8"	W/S			EC
FL12	2	3	50	36	20705		MAXIM	PKWY		649-305036	1320	1	1	RES	5/8"	W/S			EC
FL12	3	3	51	1	2504		ALABASTER	AVE		649-305101	2510	1	1	RES	5/8"	W/S			EC
FL12	3	3	52	1	20706		MAXIM	PKWY		649-305201	3995	1	1	RES	5/8"	W/S			EC
FL12	3	3	52	2	20714		MAXIM	PKWY		649-305202	3990	1	1	RES	5/8"	W/S			EC
FL12	3	3	52	3	20722		MAXIM	PKWY		649-305203	3985	1	1	RES	5/8"	W/S			EC
FL12	2	4	30	10	2308		BALLARD	AVE		649-403010	2495	1	1	RES	5/8"	W/S			EC
FL12	2	4	30	12	2324		BALLARD	AVE		649-403012	2505	1	1	RES	5/8"	W/S		11/25/1997	EC
FL12	2	4	30	14	2340		BALLARD	AVE		649-403014	2515	1	1	RES	5/8"	W/S			EC
FL12	2	4	30	17	2364		BALLARD	AVE		649-403017	2530	1	1	RES	5/8"	W/S		1/28/1997	EC
FL12	2	4	31	2	2363		BALLARD	AVE		649-403102	2455	1	1	RES	5/8"	W/S			EC
FL12	2	4	31	3	2355		BALLARD	AVE		649-403103	2460	1	1	RES	5/8"	W/S			EC
FL12	2	4	31	4	2347		BALLARD	AVE		649-403104	2465	1	1	RES	5/8"	W/S			EC
FL12	2	4	31	7	2323		BALLARD	AVE		649-403107	2480	1	1	RES	5/8"	W/S			EC
FL12	2	4	31	8	2315		BALLARD	AVE		649-403108	2485	1	1	RES	5/8"	W/S			EC
FL12	2	4	31	9	2307		BALLARD	AVE		649-403109	2490	1	1	RES	5/8"	W/S			EC
FL12	2	4	31	12	2322		BAKER	AVE		649-403112	2415	1	1	RES	5/8"	W/S			EC
FL12	2	4	31	13	2330		BAKER	AVE		649-403113	2420	1	1	RES	5/8"	W/S			EC
FL12	2	4	31	18	2370		BAKER	AVE		649-403118	2445	1	1	RES	5/8"	W/S			EC
FL12	2	4	32	3	2353		BAKER	AVE		649-403203	2370	1	1	RES	5/8"	W/S			EC
FL12	2	4	32	4	2345		BAKER	AVE		649-403204	2375	1	1	RES	5/8"	W/S			EC
FL12	2	4	32	5	2337		BAKER	AVE		649-403205	2380	1	1	RES	5/8"	W/S			EC
FL12	2	4	32	9	2305		BAKER	AVE		649-403209	2400	1	1	RES	5/8"	W/S			EC
FL12	2	4	32	10	2304		BAGDAD	AVE		649-403210	2315	1	1	RES	5/8"	W/S			EC
FL12	2	4	32	11	2312		BAGDAD	AVE		649-403211	2320	1	1	RES	5/8"	W/S			EC
FL12	2	4	32	12	2320		BAGDAD	AVE		649-403212	2325	1	1	RES	5/8"	W/S			EC
FL12	2	4	32	15	2344		BAGDAD	AVE		649-403215	2340	1	1	RES	5/8"	W/S			EC
FL12	2	4	32	16	2352		BAGDAD	AVE		649-403216	2345	1	1	RES	5/8"	W/S			EC
FL12	2	4	32	17	2360		BAGDAD	AVE		649-403217	2350	1	1	RES	5/8"	W/S			EC
FL12	2	4	32	18	2368		BAGDAD	AVE		649-403218	2355	1	1	RES	5/8"	W/S			EC
FL12	2	4	33	1	2367		BAGDAD	AVE		649-403301	2270	1	1	RES	5/8"	W/S			EC
FL12	2	4	33	9	2367		BAGDAD	AVE		649-403309	2310	1	1	RES	5/8"	W/S	\$3,000.00	10/27/1998	EC
FL12	2	4	33	10	2302		BABBITT	AVE		649-403310	2165	1	1	RES	5/8"	W/S			EC
FL12	2	4	33	11	2310		BABBITT	AVE		649-403311	2170	1	1	RES	5/8"	W/S			EC
FL12	2	4	33	12	2318		BABBITT	AVE		649-403312	2175	1	1	RES	5/8"	W/S	\$3,000.00	3/2/1999	EC
FL12	2	4	33	15	2342		BABBITT	AVE		649-403315	2190	1	1	RES	5/8"	W/S			EC
FL12	2	4	33	16	20324		MARDI GRAS	ST		649-403316	2195	1	1	RES	5/8"	W/S			EC
FL12	2	4	33	18	20340		MARDI GRAS	ST		649-403318	2205	1	1	RES	5/8"	W/S			EC
FL12	2	4	33	20	20356		MARDI GRAS	ST		649-403320	2215	1	1	RES	5/8"	W/S			EC
FL12	2	4	33	21	20362		MARDI GRAS	ST		649-403321	2220	1	1	RES	5/8"	W/S			EC
FL12	2	4	33	22	20370		MARDI GRAS	ST		649-403322	2225	1	1	RES	5/8"	W/S			EC
FL12	2	4	33	25	20403		MARLIN	ST		649-403325	2240	1	1	RES	5/8"	W/S	\$3,000.00	12/14/1999	KS
FL12	2	4	33	26			MARLIN	ST		649-403326	2245	1	1	RES	5/8"	W/S	\$3,000.00	6/29/1999	KS
FL12	2	4	33	27	20341		MARLIN	ST		649-403327	2250	1	1	RES	5/8"	W/S			EC

CY	RTE	UNIT	BLK	LOT#	NUMBER	PRE	STREET	SUF	APT	ACCT #	SEQ	ACCTS	UNITS	TYPE	MTR	SV	TAP FEE	NB DATE	CSR
FL12	2	4	33	29	20325		MARLIN	ST		649-403329	2260	1	1	RES	5/8*	W/S			EC
FL12	2	4	33	30	20317		MARLIN	ST		649-403330	2265	1	1	RES	5/8*	W/S			EC
FL12	2	4	34	1	2353		ASCOT	AVE		649-403401	2080	1	1	RES	5/8*	W/S		5/7/1996	EC
FL12	2	4	34	2	2345		ASCOT	AVE		649-403402	2085	1	1	RES	5/8*	W/S			EC
FL12	2	4	34	3	2337		ASCOT	AVE		649-403403	2090	1	1	RES	5/8*	W/S			EC
FL12	2	4	34	15	2360		ARDON	AVE		649-403415	2075	1	1	RES	5/8*	W/S			EC
FL12	3	4	35	1	2606		ARDON	AVE		649-403501	2020	1	1	RES	5/8*	W/S			EC
FL12	3	4	35	2	2614		ARDON	AVE		649-403502	2025	1	1	RES	5/8*	W/S			EC
FL12	3	4	35	3	2266		ARDON	AVE		649-403503	2030	1	1	RES	5/8*	W/S			EC
FL12	3	4	35	4	2630		ARDON	AVE		649-403504	2040	1	1	RES	5/8*	W/S			EC
FL12	3	4	35	5	2636		ARDON	AVE		649-403505	2045	1	1	RES	5/8*	W/S			EC
FL12	3	4	35	6	2708		ARDON	AVE		649-403506	2050	1	1	RES	3/4*	W/S			EC
FL12	3	4	35	7	2716		ARDON	AVE		649-403507	2055	1	1	RES	5/8*	W/S			EC
FL12	3	4	35	8	2724		ARDON	AVE		649-403508	2060	1	1	RES	5/8*	W/S			EC
FL12	3	4	35	9	2723		ARDON	AVE		649-403509	2065	1	1	RES	5/8*	W/S			EC
FL12	3	4	35	11	2707		ARDON	AVE		649-403511	2075	1	1	RES	5/8*	W/S			EC
FL12	3	4	35	12	2629		ARDON	AVE		649-403512	2080	1	1	RES	5/8*	W/S			EC
FL12	3	4	35	13	2621		ARDON	AVE		649-403513	2085	1	1	RES	5/8*	W/S			EC
FL12	3	4	35	14	2613		ARDON	AVE		649-403514	2090	1	1	RES	5/8*	W/S			EC
FL12	3	4	35	15	2605		ARDON	AVE		649-403515	2095	1	1	RES	5/8*	W/S			EC
FL12	3	4	35	16	2535		ARDON	AVE		649-403516	2100	1	1	RES	5/8*	W/S			EC
FL12	3	4	35	17	2527		ARDON	AVE		649-403517	2105	1	1	RES	5/8*	W/S			EC
FL12	3	4	35	18	2519		ARDON	AVE		649-403518	2110	1	1	RES	5/8*	W/S			EC
FL12	2	4	36	1	20312		MAXIM	PKWY		649-403601	3020	1	1	RES	5/8*	W/S			EC
FL12	2	4	36	2	20320		MAXIM	PKWY		649-403602	3025	1	1	RES	5/8*	W/S			EC
FL12	2	4	36	4	20336		MAXIM	PKWY		649-403604	3035	1	1	RES	5/8*	W/S			EC
FL12	2	4	36	7	20406		MAXIM	PKWY		649-403607	3050	1	1	RES	5/8*	W/S			EC
FL12	2	4	36	8	20414		MAXIM	PKWY		649-403608	3055	1	1	RES	5/8*	W/S			EC
FL12	2	4	36	9	20422		MAXIM	PKWY		649-403609	3060	1	1	RES	5/8*	W/S			EC
FL12	2	4	36	14	20423		MELVILLE	ST		649-403614	3085	1	1	RES	5/8*	W/S		4/2/1996	EC
FL12	2	4	36	17	20407		MELVILLE	ST		649-403617	3100	1	1	RES	5/8*	W/S			EC
FL12	2	4	36	18	20337		MELVILLE	ST		649-403618	3105	1	1	RES	5/8*	W/S			EC
FL12	2	4	36	19	20329		MELVILLE	ST		649-403619	3110	1	1	RES	5/8*	W/S		9/24/1996	EC
FL12	2	4	36	22	20305		MELVILLE	ST		649-403622	3125	1	1	RES	5/8*	W/S			EC
FL12	2	4	37	2	20124		MAXIM	PKWY		649-403702	2965	1	1	RES	5/8*	W/S			EC
FL12	2	4	37	4	20140		MAXIM	PKWY		649-403704	2975	1	1	RES	5/8*	W/S			EC
FL12	2	4	37	6	20210		MAXIM	PKWY		649-403706	2985	1	1	RES	5/8*	W/S			EC
FL12	2	4	37	8	20226		MAXIM	PKWY		649-403708	2995	1	1	RES	5/8*	W/S			EC
FL12	2	4	37	11	20250		MAXIM	PKWY		649-403711	3010	1	1	RES	5/8*	W/S			EC
FL12	2	4	37	12	20259		MELVILLE	ST		649-403712	3130	1	1	RES	5/8*	W/S		5/7/1996	EC
FL12	2	4	37	14	20235		MELVILLE	ST		649-403714	3140	1	1	RES	5/8*	W/S			EC
FL12	2	4	37	20	20117		MELVILLE	ST		649-403720	3170	1	1	RES	5/8*	W/S			EC
FL12	2	4	37	21	20109		MELVILLE	ST		649-403721	3175	1	1	RES	5/8*	W/S			EC
FL12	2	4	38	2	20122		MARLIN	ST		649-403802	2645	1	1	RES	5/8*	W/S			EC
FL12	2	4	38	4	20138		MARLIN	ST		649-403804	2655	1	1	RES	5/8*	W/S			EC
FL12	2	4	38	6	20208		MARLIN	ST		649-403806	2665	1	1	RES	5/8*	W/S			EC
FL12	2	4	38	9	20232		MARLIN	ST		649-403809	2680	1	1	RES	5/8*	W/S			EC
FL12	2	4	38	11	20248		MARLIN	ST		649-403811	2695	1	1	RES	5/8*	W/S			EC

CY	RTE	UNIT	BLK	LOT#	NUMBER	PRE	STREET	SUF	APT	ACCT #	SEQ	ACCTS	UNITS	TYPE	MTR	SV	TAP FEE	NB DATE	CSR
FL12	2	4	38	12	20249		MAXIM		PKWY	649-403812	2875	1	1	RES	5/8"	W/S			EC
FL12	2	4	38	15	20225		MAXIM		PKWY	649-403815	2890	1	1	RES	5/8"	W/S			EC
FL12	2	4	38	16	20217		MAXIM		PKWY	649-403816	2895	1	1	RES	5/8"	W/S			EC
FL12	2	4	38	17	20209		MAXIM		PKWY	649-403817	2900	1	1	RES	5/8"	W/S			EC
FL12	2	4	38	20	20131		MAXIM		PKWY	649-403820	2915	1	1	RES	5/8"	W/S			EC
FL12	2	4	38	21	20123		MAXIM		PKWY	649-403821	2920	1	1	RES	5/8"	W/S			EC
FL12	2	4	39	2	20318		MARLIN		ST	649-403902	2705	1	1	RES	5/8"	W/S			EC
FL12	2	4	39	5	20342		MARLIN		ST	649-403905	2720	1	1	RES	5/8"	W/S			EC
FL12	2	4	39	7	20404		MARLIN		ST	649-403907	2730	1	1	RES	5/8"	W/S		9/23/1997	EC
FL12	2	4	39	8	20412		MARLIN		ST	649-403908	2735	1	1	RES	5/8"	W/S		5/7/1996	EC
FL12	2	4	39	9	20420		MARLIN		ST	649-403909	2740	1	1	RES	5/8"	W/S			EC
FL12	2	4	39	10	20428		MARLIN		ST	649-403910	2745	1	1	RES	5/8"	W/S			EC
FL12	2	4	39	11	20436		MARLIN		ST	649-403911	2750	1	1	RES	5/8"	W/S			EC
FL12	2	4	39	12			MARLIN		ST	649-403912	2755	1	1	RES	5/8"	W/S	\$3,000.00	8/17/1999	KS
FL12	2	4	39	13	20514		MARLIN		ST	649-403913	2760	1	1	RES	5/8"	W/S			EC
FL12	2	4	39	23	20527		MAXIM		PKWY	649-403923	2815	1	1	RES	5/8"	W/S			EC
FL12	2	4	39	25	20429		MAXIM		PKWY	649-403925	2825	1	1	RES	5/8"	W/S			EC
FL12	2	4	39	26	20421		MAXIM		PKWY	649-403926	2830	1	1	RES	5/8"	W/S			EC
FL12	2	4	39	28	20405		MAXIM		PKWY	649-403928	2840	1	1	RES	5/8"	W/S			EC
FL12	2	4	39	29	20351		MAXIM		PKWY	649-403929	2845	1	1	RES	5/8"	W/S			EC
FL12	2	4	39	30	20343		MAXIM		PKWY	649-403930	2850	1	1	RES	5/8"	W/S			EC
FL12	2	4	39	31	20335		MAXIM		PKWY	649-403931	2855	1	1	RES	5/8"	W/S			EC
FL12	2	4	39	33	20313		MAXIM		PKWY	649-403933	2865	1	1	RES	5/8"	W/S			EC
FL12	3	4	48	12	2413		ABALONE		BLVD	649-404812	3200	1	1	RES	5/8"	W/S			EC
FL12	3	4	48	13	2421		ABALONE		BLVD	649-404813	3195	1	1	RES	5/8"	W/S			EC
FL12	3	4	48	14	2429		ABALONE		BLVD	649-404814	3190	1	1	RES	5/8"	W/S			EC
FL12	3	4	48	16	2445		ABALONE		BLVD	649-404816	3180	1	1	RES	5/8"	W/S			EC
FL12	3	4	48	17	2453		ABALONE		BLVD	649-404817	3175	1	1	RES	5/8"	W/S			EC
FL12	3	4	48	19	2469		ABALONE		BLVD	649-404819	3165	1	1	RES	5/8"	W/S			EC
FL12	3	4	48	22	2503		ABALONE		BLVD	649-404822	3150	1	1	RES	5/8"	W/S		6/24/1997	EC
FL12	3	4	48	23	2511		ABALONE		BLVD	649-404823	3145	1	1	RES	5/8"	W/S			EC
FL12	3	4	48	24	2519		ABALONE		BLVD	649-404824	3140	1	1	RES	5/8"	W/S			EC
FL12	3	4	48	25	2527		ABALONE		BLVD	649-404825	3135	1	1	RES	5/8"	W/S			EC
FL12	3	4	48	26	2535		ABALONE		BLVD	649-404826	3130	1	1	RES	5/8"	W/S			EC
FL12	3	4	48	28	2601		ABALONE		BLVD	649-404828	3120	1	1	RES	5/8"	W/S			EC
FL12	3	4	48	29	2609		ABALONE		BLVD	649-404829	3115	1	1	RES	5/8"	W/S		7/29/1997	EC
FL12	3	4	48	30	2617		ABALONE		BLVD	649-404830	3110	1	1	RES	5/8"	W/S			EC
FL12	3	4	48	32	2633		ABALONE		BLVD	649-404832	3100	1	1	RES	5/8"	W/S			EC
FL12	3	4	48	33	2641		ABALONE		BLVD	649-404833	3095	1	1	RES	5/8"	W/S			EC
FL12	3	4	48	34	2649		ABALONE		BLVD	649-404834	3090	1	1	RES	5/8"	W/S			EC
FL12	3	4	48	35	2657		ABALONE		BLVD	649-404835	3085	1	1	RES	5/8"	W/S			EC
FL12	3	4	48	36	2705		ABALONE		BLVD	649-404836	3080	1	1	RES	5/8"	W/S			EC
FL12	3	4	48	37	2713		ABALONE		BLVD	649-404837	3075	1	1	RES	5/8"	W/S			EC
FL12	3	4	48	38	2721		ABALONE		BLVD	649-404838	3070	1	1	RES	5/8"	W/S			EC
FL12	3	4	48	39	2729		ABALONE		BLVD	649-404839	3065	1	1	RES	5/8"	W/S			EC
FL12	3	4	48	40	2737		ABALONE		BLVD	649-404840	3060	1	1	RES	5/8"	W/S			EC
FL12	3	4	48	42	2753		ABALONE		BLVD	649-404842	3050	1	1	RES	5/8"	W/S			EC
FL12	3	4	48	44	2815		ABALONE		BLVD	649-404844	3040	1	1	RES	5/8"	W/S			EC

CY	RTE	UNIT	BLK	LOT#	NUMBER	PRE	STREET	SUF	APT	ACCT #	SEQ	ACCTS	UNITS	TYPE	MTR	SV	TAP FEE	NB DATE	CSR
FL12	3	4	53	15	2522		ABBEY	AVE		649-405315	3665	1	1	RES	5/8"	W/S			EC
FL12	3	4	53	18	2546		ABBEY	AVE		649-405318	3680	1	1	RES	5/8"	W/S			EC
FL12	3	4	53	19	2604		ABBEY	AVE		649-405319	3685	1	1	RES	5/8"	W/S			EC
FL12	3	4	53	23	2636		ABBEY	AVE		649-405323	3705	1	1	RES	5/8"	W/S			EC
FL12	3	4	53	24	2644		ABBEY	AVE		649-405324	3710	1	1	RES	5/8"	W/S			EC
FL12	3	4	53	25	2652		ABBEY	AVE		649-405325	3715	1	1	RES	5/8"	W/S			EC
FL12	3	4	53	26	2660		ABBEY	AVE		649-405326	3720	1	1	RES	5/8"	W/S			EC
FL12	3	4	54	3	2474		ABALONE	BLVD		649-405403	3255	1	1	RES	5/8"	W/S			EC
FL12	3	4	54	4	2480		ABALONE	BLVD		649-405404	3260	1	1	RES	5/8"	W/S			EC
FL12	3	4	54	5	2504		ABALONE	BLVD		649-405405	3265	1	1	RES	5/8"	W/S			EC
FL12	3	4	54	6	2512		ABALONE	BLVD		649-405406	3270	1	1	RES	5/8"	W/S			EC
FL12	3	4	54	9	2536		ABALONE	BLVD		649-405409	3285	1	1	RES	5/8"	W/S			EC
FL12	3	4	54	12	2608		ABALONE	BLVD		649-405412	3300	1	1	RES	5/8"	W/S		3/17/1998	EC
FL12	3	4	54	14	2626		ABALONE	BLVD		649-405414	3310	1	1	RES	5/8"	W/S			EC
FL12	3	4	54	15	2634		ABALONE	BLVD		649-405415	3315	1	1	RES	5/8"	W/S			EC
FL12	3	4	54	16	2642		ABALONE	BLVD		649-405416	3320	1	1	RES	5/8"	W/S			EC
FL12	3	4	54	17	2650		ABALONE	BLVD		649-405417	3325	1	1	RES	5/8"	W/S			EC
FL12	3	4	54	18	2658		ABALONE	BLVD		649-405418	3330	1	1	RES	5/8"	W/S			EC
FL12	3	4	54	19	2659		ABBEY	AVE		649-405419	3465	1	1	RES	5/8"	W/S			EC
FL12	3	4	54	21	2651		ABBEY	AVE		649-405421	3475	1	1	RES	5/8"	W/S			EC
FL12	3	4	54	23	2627		ABBEY	AVE		649-405423	3485	1	1	RES	5/8"	W/S			EC
FL12	3	4	54	24	2619		ABBEY	AVE		649-405424	3490	1	1	RES	5/8"	W/S			EC
FL12	3	4	54	25	2611		ABBEY	AVE		649-405425	3495	1	1	RES	5/8"	W/S			EC
FL12	3	4	54	31	2513		ABBEY	AVE		649-405431	3525	1	1	RES	5/8"	W/S			EC
FL12	3	4	54	32	2505		ABBEY	AVE		649-405432	3530	1	1	RES	5/8"	W/S			EC
FL12	3	4	54	34	2431		ABBEY	AVE		649-405434	3540	1	1	RES	5/8"	W/S			EC
FL12	3	4	55	1	2857		ABBEY	AVE		649-405501	3400	1	1	RES	5/8"	W/S			EC
FL12	3	4	55	3	2841		ABBEY	AVE		649-405503	3410	1	1	RES	5/8"	W/S			EC
FL12	3	4	55	5	2825		ABBEY	AVE		649-405505	3420	1	1	RES	5/8"	W/S			EC
FL12	3	4	55	6	2817		ABBEY	AVE		649-405506	3425	1	1	RES	5/8"	W/S			EC
FL12	3	4	55	9	2747		ABBEY	AVE		649-405509	3440	1	1	RES	5/8"	W/S			EC
FL12	3	4	55	11	2731		ABBEY	AVE		649-405511	3450	1	1	RES	5/8"	W/S			EC
FL12	3	4	55	12	2723		ABBEY	AVE		649-405512	3455	1	1	RES	5/8"	W/S			EC
FL12	3	4	55	13	2715		ABBEY	AVE		649-405513	3460	1	1	RES	5/8"	W/S			EC
FL12	3	4	55	14	2714		ABALONE	BLVD		649-405514	3335	1	1	RES	5/8"	W/S			EC
FL12	3	4	55	15	2722		ABALONE	BLVD		649-405515	3340	1	1	RES	5/8"	W/S			EC
FL12	3	4	55	16	2730		ABALONE	BLVD		649-405516	3345	1	1	RES	5/8"	W/S			EC
FL12	3	4	55	17	2738		ABALONE	BLVD		649-405517	3350	1	1	RES	5/8"	W/S			EC
FL12	3	4	55	18	2746		ABALONE	BLVD		649-405518	3355	1	1	RES	5/8"	W/S			EC
FL12	3	4	55	19	2754		ABALONE	BLVD		649-405519	3360	1	1	RES	5/8"	W/S			EC
FL12	3	4	55	20	2808		ABALONE	BLVD		649-405520	3365	1	1	RES	5/8"	W/S			EC
FL12	3	4	55	22	2824		ABALONE	BLVD		649-405522	3375	1	1	RES	5/8"	W/S			EC
FL12	3	4	55	26	2856		ABALONE	BLVD		649-405526	3395	1	1	RES	5/8"	W/S			EC
FL12	3	4	56	1	2851		ABNEY	AVE		649-405601	3790	1	1	RES	5/8"	W/S			EC
FL12	3	4	56	2	2843		ABNEY	AVE		649-405602	3795	1	1	RES	5/8"	W/S			EC
FL12	3	4	56	3	2835		ABNEY	AVE		649-405603	3800	1	1	RES	5/8"	W/S			EC
FL12	3	4	56	4	2827		ABNEY	AVE		649-405604	3805	1	1	RES	5/8"	W/S			EC
FL12	3	4	56	5	2819		ABNEY	AVE		649-405605	3810	1	1	RES	5/8"	W/S			EC

CY	RTE	UNIT	BLK	LOT#	NUMBER	PRE	STREET	SUF	APT	ACCT #	SEQ	ACCTS	UNITS	TYPE	MTR	SV	TAP	FEE	NB	DATE	CSR
FL12	3	4	56	7	2803		ABNEY	AVE		649-405607	3820	1	1	RES	5/8"	W/S					EC
FL12	3	4	56	9	2749		ABNEY	AVE		649-405609	3830	1	1	RES	5/8"	W/S					EC
FL12	3	4	56	12	2725		ABNEY	AVE		649-405612	3845	1	1	RES	5/8"	W/S					EC
FL12	3	4	56	13	2717		ABNEY	AVE		649-405613	3850	1	1	RES	5/8"	W/S					EC
FL12	3	4	56	14	2716		ABBEY	AVE		649-405614	3725	1	1	RES	5/8"	W/S					EC
FL12	3	4	56	15	2724		ABBEY	AVE		649-405615	3730	1	1	RES	5/8"	W/S					EC
FL12	3	4	56	17	2740		ABBEY	AVE		649-405617	3740	1	1	RES	5/8"	W/S					EC
FL12	3	4	56	19	2756		ABBEY	AVE		649-405619	3750	1	1	RES	5/8"	W/S					EC
FL12	3	4	56	20	2810		ABBEY	AVE		649-405620	3755	1	1	RES	5/8"	W/S					EC
FL12	3	4	56	21	2818		ABBEY	AVE		649-405621	3760	1	1	RES	5/8"	W/S					EC
FL12	3	4	56	22	2826		ABBEY	AVE		649-405622	3765	1	1	RES	5/8"	W/S					EC
FL12	3	4	56	23	2834		ABBEY	AVE		649-405623	3770	1	1	RES	5/8"	W/S					EC
FL12	3	4	56	24	2842		ABBEY	AVE		649-405624	3775	1	1	RES	5/8"	W/S					EC
FL12	3	4	56	25	2850		ABBEY	AVE		649-405625	3780	1	1	RES	5/8"	W/S					EC
FL12	3	4	56	26	2858		ABBEY	AVE		649-405626	3785	1	1	RES	5/8"	W/S					EC
FL12	3	4	57	1	2532		ABNEY	AVE		649-405701	2715	1	1	RES	5/8"	W/S					EC
FL12	3	4	57	2	2540		ABNEY	AVE		649-405702	2720	1	1	RES	5/8"	W/S					EC
FL12	3	4	57	3	2548		ABNEY	AVE		649-405703	2725	1	1	RES	5/8"	W/S					EC
FL12	3	4	57	4	2606		ABNEY	AVE		649-405704	2730	1	1	RES	5/8"	W/S					EC
FL12	3	4	57	5	2614		ABNEY	AVE		649-405705	2735	1	1	RES	5/8"	W/S					EC
FL12	3	4	57	6	2630		ABNEY	AVE		649-405706	2740	1	1	RES	5/8"	W/S					EC
FL12	3	4	57	7	2638		ABNEY	AVE		649-405707	2745	1	1	RES	5/8"	W/S					EC
FL12	3	4	57	8	2646		ABNEY	AVE		649-405708	2750	1	1	RES	5/8"	W/S					EC
FL12	3	4	57	9	2654		ABNEY	AVE		649-405709	2755	1	1	RES	5/8"	W/S					EC
FL12	3	4	57	10	2710		ABNEY	AVE		649-405710	2760	1	1	RES	5/8"	W/S					EC
FL12	3	4	57	11	2718		ABNEY	AVE		649-405711	2765	1	1	RES	5/8"	W/S					EC
FL12	3	4	57	12	2726		ABNEY	AVE		649-405712	2770	1	1	RES	5/8"	W/S					EC
FL12	3	4	57	13	2734		ABNEY	AVE		649-405713	2775	1	1	RES	5/8"	W/S					EC
FL12	3	4	57	14	2742		ABNEY	AVE		649-405714	2780	1	1	RES	5/8"	W/S					EC
FL12	3	4	57	15	2750		ABNEY	AVE		649-405715	2785	1	1	RES	5/8"	W/S					EC
FL12	3	4	57	16	2804		ABNEY	AVE		649-405716	2790	1	1	RES	5/8"	W/S					EC
FL12	3	4	57	17	2812		ABNEY	AVE		649-405717	2795	1	1	RES	5/8"	W/S					EC
FL12	3	4	57	18	2820		ABNEY	AVE		649-405718	2800	1	1	RES	5/8"	W/S					EC
FL12	3	4	57	21	20855		NETTLETON	ST		649-405721	2815	1	1	RES	5/8"	W/S					EC
FL12	3	4	57	23	20839		NETTLETON	ST		649-405723	2825	1	1	RES	5/8"	W/S					EC
FL12	3	4	57	25	20823		NETTLETON	ST		649-405725	2835	1	1	RES	5/8"	W/S					EC
FL12	3	4	57	27	20805		NETTLETON	ST		649-405727	2845	1	1	RES	5/8"	W/S					EC
FL12	3	4	57	29	20737		NETTLETON	ST		649-405729	2855	1	1	RES	5/8"	W/S				4/22/1997	EC
FL12	3	4	57	30	20729		NETTLETON	ST		649-405730	2860	1	1	RES	5/8"	W/S					EC
FL12	3	4	57	31	20721		NETTLETON	ST		649-405731	2865	1	1	RES	5/8"	W/S					EC
FL12	3	4	57	32	20713		NETTLETON	ST		649-405732	2870	1	1	RES	5/8"	W/S					EC
FL12	3	4	57	33	20705		NETTLETON	ST		649-405733	2875	1	1	RES	5/8"	W/S					EC
FL12	3	4	58	1	20706		NETTLETON	ST		649-405801	2880	1	1	RES	5/8"	W/S					EC
FL12	3	4	58	4	20730		NETTLETON	ST		649-405804	2895	1	1	RES	5/8"	W/S				1/27/1998	EC
FL12	3	4	58	5	20738		NETTLETON	ST		649-405805	2900	1	1	RES	5/8"	W/S				11/25/1997	EC
FL12	3	4	58	7	20808		NETTLETON	ST		649-405807	2910	1	1	RES	5/8"	W/S					EC
FL12	3	4	58	9	20824		NETTLETON	ST		649-405809	2920	1	1	RES	5/8"	W/S				4/14/1998	EC
FL12	3	4	58	13	20854		NETTLETON	ST		649-405813	2940	1	1	RES	5/8"	W/S					EC

CY	RTE	UNIT	BLK	LOT#	NUMBER	PRE	STREET	SUF	APT	ACCT #	SEQ	ACCTS	UNITS	TYPE	MTR	SV	TAP FEE	NB DATE	CSR
FL12	3	4	58	14	20862		NETTLETON	ST		649-405814	2945	1	1	RES	5/8"	W/S			EC
FL12	3	4	58	17	20918		NETTLETON	ST		649-405817	2960	1	1	RES	5/8"	W/S			EC
FL12	3	4	58	21	2910		ABALONE	BLVD		649-405821	2980	1	1	RES	5/8"	W/S		2/27/1996	EC
FL12	3	4	59	17	20400		NETTLETON	ST		649-405917	1080	1	1	RES	5/8"	W/S		5/28/1996	EC
FL12	3	4	59	27			NETTLETON	ST		649-405927	1130	1	1	RES	5/8"	W/S	\$3,000.00	7/28/1998	EC
FL12	3	4	59	34	20634		NETTLETON	ST		649-405934	1165	1	1	RES	5/8"	W/S		4/21/1998	EC
FL12	3	4	60	12	20536		NETTLETON	ST		649-406012	1655	1	1	RES	5/8"	W/S		3/19/1996	EC
FL12	3	4	60	16	20610		NETHERLAND	ST		649-406016	1675	1	1	RES	5/8"	W/S			EC
FL12	3	4	60	18	20626		NETHERLAND	ST		649-406018	1685	1	1	RES	5/8"	W/S			EC
FL12	3	4	60	19	20634		NETHERLAND	ST		649-406019	1690	1	1	RES	5/8"	W/S			EC
FL12	3	4	60	23	20625		NETTLETON	ST		649-406023	1710	1	1	RES	5/8"	W/S			EC
FL12	3	4	60	26	20591		NETTLETON	ST		649-406026	1725	1	1	RES	5/8"	W/S	\$3,000.00	3/23/1999	EC
FL12	3	4	60	30	20557		NETTLETON	ST		649-406030	1745	1	1	RES	5/8"	W/S	\$3,000.00	8/4/1999	KS
FL12	3	4	60	30	20557		NETTLETON	ST		649-406030	1745	1	1	RES	5/8"	W/S		7/23/1996	EC
FL12	3	4	61	21	20477		NETHERLAND	ST		649-406121	1275	1	1	RES	5/8"	W/S			EC
FL12	3	4	61	23			NETHERLAND	ST		649-406123	1265	1	1	RES	5/8"	W/S	\$3,000.00	12/8/1998	EC
FL12	3	4	61	26	20601		NETHERLAND	ST		649-406126	1250	1	1	RES	5/8"	W/S			EC
FL12	3	4	61	27	20631		NETHERLAND	ST		649-406127	1245	1	1	RES	5/8"	W/S		2/17/1998	EC
FL12	3	4	61	31	20655		NETHERLAND	ST		649-406131	1225	1	1	RES	5/8"	W/S		3/25/1997	EC
FL12	3	4	61	34	2801		ALBION	AVE		649-406134	1210	1	1	RES	5/8"	W/S			EC
FL12	3	4	63	1	2512		ARDON	AVE		649-406301	2015	1	1	RES	5/8"	W/S			EC
FL12	3	4	63	2	20432		MELVILLE	ST		649-406302	2010	1	1	RES	5/8"	W/S		4/8/1997	EC
FL12	3	4	63	3	20424		MELVILLE	ST		649-406303	2005	1	1	RES	5/8"	W/S		10/8/1996	EC
FL12	3	4	63	5	20408		MELVILLE	ST		649-406305	1995	1	1	RES	5/8"	W/S			EC
FL12	3	4	63	6	20338		MELVILLE	ST		649-406306	1990	1	1	RES	5/8"	W/S			EC
FL12	3	4	63	7	20330		MELVILLE	ST		649-406307	1985	1	1	RES	5/8"	W/S			EC
FL12	3	4	63	8	20322		MELVILLE	ST		649-406308	1980	1	1	RES	5/8"	W/S			EC
FL12	3	4	63	9	20314		MELVILLE	ST		649-406309	1975	1	1	RES	5/8"	W/S		3/4/1997	EC
FL12	3	4	63	10	20314		MELVILLE	ST		649-406310	1970	1	1	RES	5/8"	W/S			EC
FL12	3	4	63	10	20406		MELVILLE	ST		649-406310	1970	1	1	RES	5/8"	W/S			EC
FL12	3	4	63	12	20244		MELVILLE	ST		649-406312	1960	1	1	RES	5/8"	W/S			EC
FL12	3	4	63	12	20244		MELVILLE	ST		649-406312	1960	1	1	RES	5/8"	W/S			EC
FL12	3	4	63	14	20220		MELVILLE	ST		649-406314	1950	1	1	RES	5/8"	W/S			EC
FL12	3	4	63	16	20204		MELVILLE	ST		649-406316	1940	1	1	RES	5/8"	W/S			EC
FL12	3	4	63	18	2567		BALLARD	AVE		649-406318	1930	1	1	RES	5/8"	W/S			EC
FL12	3	4	63	18	2567		BALLARD	AVE		649-406318	1930	1	1	RES	5/8"	W/S		9/24/1996	EC
FL12	3	4	63	24	2683		BALLARD	AVE		649-406324	1900	1	1	RES	5/8"	W/S	\$3,000.00	1/19/1999	EC
FL12	3	4	63	27	2703		BALLARD	AVE		649-406327	1885	1	1	RES	5/8"	W/S	\$3,000.00	3/2/1999	EC
FL12	3	4	63	27	2703		BALLARD	AVE		649-406329	1875	1	1	RES	5/8"	W/S			EC
FL12	3	4	63	29	2727		BALLARD	AVE		649-406330	1870	1	1	RES	5/8"	W/S			EC
FL12	3	4	63	30	2733		BALLARD	AVE		649-406330	1870	1	1	RES	5/8"	W/S			EC
FL12	3	4	63	32	2805		BALLARD	AVE		649-406332	1860	1	1	RES	5/8"	W/S			EC
FL12	3	4	63	35	2827		BALLARD	AVE		649-406335	1845	1	1	RES	5/8"	W/S			EC
FL12	3	4	63	37	20305		NETTLETON	ST		649-406337	1835	1	1	RES	5/8"	W/S		10/22/1996	EC
FL12	2	4	64	15	2558		BALLARD	AVE		649-406415	3455	1	1	RES	5/8"	W/S			EC
FL12	2	4	64	19	2824		BALLARD	AVE		649-406419	3475	1	1	RES	5/8"	W/S			EC
FL12	2	4	64	24	2664		BALLARD	AVE		649-406424	3500	1	1	RES	5/8"	W/S	\$3,000.00	5/11/1999	KS
FL12	2	4	64	24	2664		BALLARD	AVE		649-406424	3500	1	1	RES	5/8"	W/S			EC
FL12	3	4	76	15	2702		BALLARD	AVE		649-407615	3505	1	1	RES	5/8"	W/S			EC
FL12	2	4	76	22	2804		BALLARD	AVE		649-407622	3540	1	1	RES	5/8"	W/S			EC
FL12	2	4	76	23	2812		BALLARD	AVE		649-407623	3545	1	1	RES	5/8"	W/S			EC
FL12	2	4	76	25	2828		BALLARD	AVE		649-407625	3555	1	1	RES	5/8"	W/S			EC
FL12	2	4	76	28	2852		BALLARD	AVE		649-407628	3570	1	1	RES	5/8"	W/S			EC
FL12	3	4	35	4	2630		ARDON	AVE		649-425000	2000	1	1	IRRG	5/8"	W			EC

CY	RTE	UNIT	BLK	LOT#	NUMBER	PRE	STREET	SUF	APT	ACCT #	SEQ	ACCTS	UNITS	TYPE	MTR	SV	TAP FEE	NB DATE	CSR
FL12	2	4	36	1	20312		MAXIM	PKWY		649-436410	3615	1	1	IRRG	5/8"	W			EC
FL12	2	4	38	11	20248		MARLIN	ST		649-438110	0600	1	1	IRRG	5/8"	W			EC
FL12	3	4	51	34	20722		MELVILLE	ST		649-451340	0000	1	1	IRRG	5/8"	W			EC
FL12	3	5	TRACT	M	20910		MAXIM	PKWY		649-500001	3210	1	1	RES	5/8"	W/S			EC
FL12	3	5	1	1	2405		ABALONE	BLVD		649-500101	3205	1	1	RES	5/8"	W/S			EC
FL12	2	5	2	1	2370		ABALONE	BLVD		649-500201	1125	1	1	RES	5/8"	W/S			EC
FL12	2	5	2	4	2345		ABNEY	AVE		649-500204	1250	1	1	RES	5/8"	W/S			EC
FL12	2	5	2	7	2321		ABNEY	AVE		649-500207	1235	1	1	RES	5/8"	W/S			EC
FL12	2	5	2	8	2313		ABNEY	AVE		649-500208	1230	1	1	RES	5/8"	W/S			EC
FL12	2	5	2	9	2305		ABNEY	AVE		649-500209	1225	1	1	RES	5/8"	W/S			EC
FL12	2	5	2	10	2263		ABNEY	AVE		649-500210	1220	1	1	RES	5/8"	W/S			EC
FL12	2	5	4	1	20850		MARLIN	ST		649-500401	1375	1	1	RES	5/8"	W/S			EC
FL12	2	5	4	2	20842		MARLIN	ST		649-500402	1370	1	1	RES	5/8"	W/S	\$3,000.00	1/5/1999	EC
FL12	2	5	4	3	20834		MARLIN	ST		649-500403	1365	1	1	RES	5/8"	W/S			EC
FL12	2	5	4	4	20826		MARLIN	ST		649-500404	1360	1	1	RES	5/8"	W/S			EC
FL12	2	5	4	5	20818		MARLIN	ST		649-500405	1355	1	1	RES	5/8"	W/S			EC
FL12	2	5	4	6	20810		MARLIN	ST		649-500406	1350	1	1	RES	5/8"	W/S			EC
FL12	2	5	4	7	20802		MARLIN	ST		649-500407	1345	1	1	RES	5/8"	W/S			EC
FL12	2	5	4	8	20737		MAXIM	PKWY		649-500408	1300	1	1	RES	5/8"	W/S			EC
FL12	2	5	4	9	20745		MAXIM	PKWY		649-500409	1295	1	1	RES	5/8"	W/S			EC
FL12	2	5	4	10	20753		MAXIM	PKWY		649-500410	1290	1	1	RES	5/8"	W/S			EC
FL12	2	5	4	11	20803		MAXIM	PKWY		649-500411	1285	1	1	RES	5/8"	W/S			EC
FL12	2	5	4	12	20811		MAXIM	PKWY		649-500412	1280	1	1	RES	5/8"	W/S			EC
FL12	2	5	4	13	20819		MAXIM	PKWY		649-500413	1275	1	1	RES	5/8"	W/S			EC
FL12	2	5	4	14	20827		MAXIM	PKWY		649-500414	1270	1	1	RES	5/8"	W/S			EC
FL12	3	5	5	1	2422		ABALONE	BLVD		649-500501	3225	1	1	RES	5/8"	W/S			EC
FL12	3	5	5	2	2414		ABALONE	BLVD		649-500502	3220	1	1	RES	5/8"	W/S			EC
FL12	3	5	5	3	2406		ABALONE	BLVD		649-500503	3215	1	1	RES	5/8"	W/S			EC
FL12	3	5	5	4	20852		MAXIM	PKWY		649-500504	3570	1	1	RES	5/8"	W/S			EC
FL12	3	5	5	5	20844		MAXIM	PKWY		649-500505	3575	1	1	RES	5/8"	W/S			EC
FL12	3	5	5	6	20836		MAXIM	PKWY		649-500506	3580	1	1	RES	5/8"	W/S			EC
FL12	3	5	5	7	20828		MAXIM	PKWY		649-500507	3585	1	1	RES	5/8"	W/S			EC
FL12	3	5	5	8	20820		MAXIM	PKWY		649-500508	3590	1	1	RES	5/8"	W/S			EC
FL12	3	5	5	9	20812		MAXIM	PKWY		649-500509	3595	1	1	RES	5/8"	W/S			EC
FL12	3	5	5	10	20804		MAXIM	PKWY		649-500510	3600	1	1	RES	5/8"	W/S			EC
FL12	3	5	5	11	20805		YAM	ST		649-500511	3605	1	1	RES	5/8"	W/S			EC
FL12	3	5	5	12	20813		YAM	ST		649-500512	3610	1	1	RES	5/8"	W/S			EC
FL12	3	5	5	13	20821		YAM	ST		649-500513	3615	1	1	RES	5/8"	W/S			EC
FL12	3	5	5	14	20829		YAM	ST		649-500514	3620	1	1	RES	5/8"	W/S			EC
FL12	3	5	5	15	20837		YAM	ST		649-500515	3625	1	1	RES	5/8"	W/S			EC
FL12	3	5	5	16	20845		YAM	ST		649-500516	3630	1	1	RES	5/8"	W/S			EC
FL12	3	5	5	17	20853		YAM	ST		649-500517	3565	1	1	RES	5/8"	W/S			EC
FL12	3	5	6	1	20770		MAXIM	PKWY		649-500601	3955	1	1	RES	5/8"	W/S			EC
FL12	3	5	6	2	20762		MAXIM	PKWY		649-500602	3960	1	1	RES	5/8"	W/S			EC
FL12	3	5	6	3	20754		MAXIM	PKWY		649-500603	3965	1	1	RES	5/8"	W/S			EC
FL12	3	5	6	4	20746		MAXIM	PKWY		649-500604	3970	1	1	RES	5/8"	W/S			EC
FL12	3	5	6	5	20738		MAXIM	PKWY		649-500605	3975	1	1	RES	5/8"	W/S			EC
FL12	3	5	6	6	20730		MAXIM	PKWY		649-500606	3980	1	1	RES	5/8"	W/S			EC

CY	RTE	UNIT	BLK	LOT#	NUMBER	PRE	STREET	SUF	APT	ACCT #	SEQ	ACCTS	UNITS	TYPE	MTR	SV	TAP FEE	NB DATE	CSR
FL12	3	5	6	7	20727		MELVILLE	ST		649-500607	4015	1	1	RES	5/8*	W/S			EC
FL12	3	5	6	8	20736		MELVILLE	ST		649-500608	4020	1	1	RES	5/8*	W/S			EC
FL12	3	5	6	9	20803		MELVILLE	ST		649-500609	4025	1	1	RES	5/8*	W/S			EC
FL12	3	5	6	10	20811		MELVILLE	ST		649-500610	4030	1	1	RES	5/8*	W/S			EC
FL12	3	5	6	11	20819		MELVILLE	ST		649-500611	4035	1	1	RES	5/8*	W/S			EC
FL12	3	5	6	12	20827		MELVILLE	ST		649-500612	4040	1	1	RES	5/8*	W/S			EC
FL12	3	5	6	13	2428		ABNEY	AVE		649-500613	3940	1	1	RES	5/8*	W/S			EC
FL12	3	5	6	14	2420		ABNEY	AVE		649-500614	3945	1	1	RES	5/8*	W/S			EC
FL12	3	5	6	15	2412		ABNEY	AVE		649-500615	3950	1	1	RES	5/8*	W/S			EC
FL12	3	5	7	2	2418		ABBEY	AVE		649-500702	3640	1	1	RES	5/8*	W/S			EC
FL12	3	5	7	3	2426		ABBEY	AVE		649-500703	3645	1	1	RES	5/8*	W/S			EC
FL12	3	5	7	4	2434		ABBEY	AVE		649-500704	3650	1	1	RES	5/8*	W/S			EC
FL12	3	5	7	5	2506		ABBEY	AVE		649-500705	3655	1	1	RES	5/8*	W/S			EC
FL12	3	5	7	6	2514		ABBEY	AVE		649-500706	3660	1	1	RES	5/8*	W/S			EC
FL12	3	5	7	7	2515		ABBEY	AVE		649-500707	3915	1	1	RES	5/8*	W/S			EC
FL12	3	5	7	8	2507		ABBEY	AVE		649-500708	3920	1	1	RES	5/8*	W/S			EC
FL12	3	5	7	9	2435		ABBEY	AVE		649-500709	3925	1	1	RES	5/8*	W/S			EC
FL12	3	5	7	11	20814		YAM	ST		649-500711	3935	1	1	RES	5/8*	W/S			EC
FL12	3	5	8	2	2438		ABALONE	BLVD		649-500802	3235	1	1	RES	5/8*	W/S			EC
FL12	3	5	8	3	2446		ABALONE	BLVD		649-500803	3240	1	1	RES	5/8*	W/S			EC
FL12	3	5	8	4	2454		ABALONE	BLVD		649-500804	3245	1	1	RES	5/8*	W/S			EC
FL12	3	5	8	5	2462		ABALONE	BLVD		649-500805	3250	1	1	RES	5/8*	W/S			EC
FL12	3	5	8	6	2425		ABBEY	AVE		649-500806	3545	1	1	RES	5/8*	W/S			EC
FL12	3	5	8	7	2417		ABBEY	AVE		649-500807	3550	1	1	RES	5/8*	W/S			EC
FL12	3	5	8	8	20846		YAM	ST		649-500808	3555	1	1	RES	5/8*	W/S			EC
FL12	3	5	8	9	20854		YAM	ST		649-500809	3560	1	1	RES	5/8*	W/S			EC
FL12	3	5	48	1	2371		ABALONE	BLVD		649-504801	1120	1	1	RES	5/8*	W/S			EC
FL12	2	5	49	1	20849		MARLIN	ST		649-504901	1380	1	1	RES	5/8*	W/S			EC
FL12	2	5	49	5	20817		MARLIN	ST		649-504905	1400	1	1	RES	5/8*	W/S			EC
FL12	2	5	49	6	2395		ALABASTER	AVE		649-504906	1405	1	1	RES	5/8*	W/S			EC
FL12	3	6	1	3	20415		NETTLETON	ST		649-600103	1795	1	1	RES	5/8*	W/S			EC
FL12	3	6	1	5	20406		NETHERLAND	ST		649-600105	1595	1	1	RES	5/8*	W/S			EC
FL12	3	6	2	13	2709		BABBITT	AVE		649-600213	1530	1	1	RES	5/8*	W/S			EC
FL12	3	6	2	16	2667		BABBITT	AVE		649-600216	1545	1	1	RES	5/8*	W/S			EC
FL12	3	6	2	25	2607		BABBITT	AVE		649-600225	1590	1	1	RES	5/8*	W/S		11/11/1997	EC
FL12	3	6	2	26	2601		BABBITT	AVE		649-600226	1805	1	1	RES	5/8*	W/S			EC
FL12	3	6	3	10	2750		BABBITT	AVE		649-600310	1420	1	1	RES	5/8*	W/S		3/31/1998	EC
FL12	3	6	3	12			BABBITT	AVE		649-600312	1410	1	1	RES	5/8*	W/S		9/16/1997	EC
FL12	3	6	3	14	2726		BABBITT	AVE		649-600314	1400	1	1	RES	5/8*	W/S		7/20/1999	KS
FL12	3	6	3	15	2720		BABBITT	AVE		649-600315	1395	1	1	RES	5/8*	W/S			EC
FL12	3	6	3	16	2714		BABBITT	AVE		649-600316	1390	1	1	RES	5/8*	W/S			EC
FL12	3	6	3	18	2702		BABBITT	AVE		649-600318	1385	1	1	RES	5/8*	W/S			EC
FL12	3	6	3	20	2690		BABBITT	AVE		649-600320	1380	1	1	RES	5/8*	W/S			EC
FL12	3	6	3	21			BABBITT	AVE		649-600321	1375	1	1	RES	5/8*	W/S			EC
FL12	3	6	3	25	2660		BABBITT	AVE		649-600325	1355	1	1	RES	5/8*	W/S		4/27/1999	EC
FL12	3	6	3	27	2648		BABBITT	AVE		649-600327	1345	1	1	RES	5/8*	W/S		7/30/1996	EC
FL12	3	6	3	28	2642		BABBITT	AVE		649-600328	1340	1	1	RES	5/8*	W/S			EC
FL12	3	6	3	29	2636		BABBITT	AVE		649-600329	1335	1	1	RES	5/8*	W/S			EC
																		10/7/1997	EC

CY	RTE	UNIT	BLK	LOT#	NUMBER	PRE	STREET	SUF	APT	ACCT #	SEQ	ACCTS	UNITS	TYPE	MTR	SV	TAP FEE	NB DATE	CSR
FL12	3	6	3	30	2630		BABBITT	AVE		649-600330	1330	1	1	RES	5/8"	W/S		7/8/1997	EC
FL12	3	6	3	32	20405		NETHERLAND	ST		649-600332	1320	1	1	RES	5/8"	W/S			EC
FL12	3	6	3	34	20421		NETHERLAND	ST		649-600334	1310	1	1	RES	5/8"	W/S	\$3,000.00	2/9/1999	EC
FL12	3	6	3	35	20429		NETHERLAND	ST		649-600335	1305	1	1	RES	5/8"	W/S			EC
FL12	5		63	29			WATER PLANT			649-990001	50	1	0	MISC	2"	W	N/A	2/9/1999	EC

ACCTSUNITS	
869	868

METER SIZES

- 1" 1 COML
- 1.5" 2 COML
- 2" 1 COML
- 2" 2 IRRG
- 1 MISC PLANT METER
- 3/4" 1 RES
- 5/8" 3 COML
- 56 DUPL
- 18 IRRG
- 766 RES
- 18 TPLX

869