

ORIGINAL

**BEFORE THE FLORIDA
PUBLIC SERVICE COMMISSION**

**DOCKET NO. 000001-EI
FLORIDA POWER & LIGHT COMPANY**

SEPTEMBER 21, 2000

GENERATING PERFORMANCE INCENTIVE FACTOR

JANUARY 2001 THROUGH DECEMBER 2001

TESTIMONY & EXHIBITS OF:

R. SILVA

DOCUMENT NUMBER-DATE

11908 SEP 21 8

EPSC-RECORDS/REPORTING

BEFORE THE FLORIDA PUBLIC SERVICE COMMISSION

FLORIDA POWER & LIGHT COMPANY

DOCKET NO. 000001-EI

SEPTEMBER 21, 2000

1
2
3
4
5
6
7
8
9
10
11
12
13
14
15
16
17
18
19
20
21
22
23
24
25

BEFORE THE PUBLIC SERVICE COMMISSION
FLORIDA POWER & LIGHT COMPANY
TESTIMONY OF R. SILVA
DOCKET NO. 000001-EI
SEPTEMBER 21, 2000

Q. Please state your name and business address.

A. My name is Rene Silva and my business address is 700 Universe Boulevard, Juno Beach, Florida 33408.

Q. Mr. Silva, would you please state your present position with Florida Power and Light Company (FPL).

A. I am the Manager of Planning, Forecasting and Regulatory Response in the Power Generation Business Unit of FPL.

Q. Mr. Silva, have you previously had testimony presented in this docket?

A. Yes, I have.

Q. Mr. Silva, what is the purpose of your testimony?

A. The purpose of my testimony is to present the target unit average net operating heat rates and target unit equivalent availability for the period of January through December, 2001, for use in determining the Generating Performance Incentive Factor (GPIF).

1 **Q. Mr. Silva, please summarize what the FPL system targets are for**
2 **Equivalent Availability Factor (EAF) and Average Net Operating Heat**
3 **Rate (ANOHR).**

4 **A.** For the period of January through December, 2001, FPL projects a weighted
5 system equivalent planned outage factor of 6.1 % and a weighted system
6 equivalent unplanned outage factor of 5.7 %, which yield a weighted system
7 equivalent availability target of 88.2 %. The targets for this period reflect
8 planned refueling outages for three nuclear units. FPL also projects weighted
9 system average net operating heat rate target of 9841 BTU/KWH for the
10 period January through December, 2001. As discussed later in this testimony,
11 these targets represent fair and reasonable values when compared to historical
12 data. FPL therefore requests that the targets for these performance indicators
13 be approved by the Commission.

14
15 **Q. Have you prepared, or caused to have prepared under your direction,**
16 **supervision or control, an exhibit in this proceeding?**

17 **A.** Yes, I have. It consists of one document. The first page of this document is an
18 index to the contents of the document. All other pages are numbered according
19 to the latest revisions of the GPIF Manual as approved by the Commission.

20
21 **Q. Have you established target levels of performance for the units to be**
22 **considered in establishing the GPIF for FPL?**

23 **A.** Yes, I have. In my Document No.1, pages 6 and 7, contain the information
24 summarizing the targets and ranges for unit equivalent availability and average
25 net operating heat rates for the eighteen (18) generating units which FPL

1 proposes to have considered as GPIF units for the period of January through
2 December, 2001. The Sheets presented in these pages were prepared in
3 accordance with the latest revisions of the GPIF Manual. All of these targets
4 have been derived utilizing methodologies as adopted in Section 4, Subsection
5 2.3 of the GPIF Manual.

6

7 **Q. Please summarize FPL's methodology for determining equivalent**
8 **availability targets?**

9 A. The GPIF Manual requires that the equivalent availability target for each unit
10 be determined as the difference between 100% and the sum of the Planned
11 Outage Factor (POF) and the Unplanned Outage Factor (UOF). The POF for
12 each unit is determined by the length of the planned outage during the projected
13 period. The GPIF Manual also requires that the sum of the most recent twelve
14 month ending average forced outage factor (FOF) and maintenance outage
15 factor (MOF) be used as the starting value for the determination of the target
16 unplanned outage factor (UOF). The UOF is then adjusted to reflect recent unit
17 performance and known unit modifications or equipment changes. This
18 adjustment is applied to units, which have had, during the historical period, or
19 are forecasted to have, during the projection period, planned outages.

20

21 **Q. Mr. Silva, were the EAF targets for the GPIF units determined using the**
22 **methodology as described in the GPIF Operating Manual?**

23 A. Yes.

24

1 **Q. How did you select the units to be considered when establishing the GPIF**
2 **for FPL?**

3 A. The eighteen (18) units which FPL proposes to use for the period of January
4 through December, 2001, represent the top 81.3% of the total forecasted system
5 net generation for this period. These units were selected in accordance with the
6 GPIF Manual Section 3.1, using the estimated net generation for each unit taken
7 from the production costing simulation program, POWRSYM, which forms the
8 basis for the projected levelized fuel cost recovery factor for the period.

9

10 **Q. Mr. Silva, from the heat rate targets and equivalent availability range**
11 **projections, do FPL's generation performance targets represent a**
12 **reasonable level of efficiency?**

13 A. Yes. These targets are reasonable and in some cases very challenging.

14

15 **Q. Does this conclude your testimony?**

16 A. Yes, it does.

DOCUMENT NO. 1

WITNESS: R. SILVA

DOCKET NO. 000001-EI

GENERATING PERFORMANCE INCENTIVE FACTOR

JANUARY THROUGH DECEMBER, 2001

DOCUMENT NUMBER 1 INDEX**FLORIDA POWER & LIGHT COMPANY****JANUARY THROUGH DECEMBER, 2001**

| <u>DOCUMENT</u> | <u>INDEX OF MANUAL PAGES</u> | <u>TITLES</u> |
|------------------------|-------------------------------------|---|
| 1 | 7.201.001 | Index of Manual Pages |
| | 7.201.002 to 7.201.003 | Generating Unit Selection Criteria |
| | 7.201.004 | GPIF Reward/(Penalty) Table (Estimated) |
| | 7.201.005 | GPIF calculation of Maximum Allowed Dollars (Estimated) |
| | 7.201.006 and 7.201.007 | GPIF Target and Range Summary |
| | 7.201.008 | GPIF Predicted Unit Heat Rates |
| | 7.201.009 | Derivation of Weighting Factors |
| | 7.201.010 | Estimated Unit Performance Data |
| | 7.201.011 - 7.201.028 | Unit MOF and FOF Versus Time Graphs |
| | 7.201.029 | Planned Outages Schedules (Estimated) |

Table 2.0
POWRSYM Projected System Generation
Period Of: January Through December 2001

| <u>Name</u> | <u>Unit</u> | <u>Capacity (MW)</u> | <u>Service Hours</u> | <u>Net Output MWH</u> | <u>NOF %</u> | <u>% of Total Output</u> | <u>Cumulative % of Total Output</u> | <u>Production Cost (\$000)</u> |
|--------------------|-------------|--------------------------|--------------------------|---------------------------|------------------|------------------------------|---|--|
| St. Lucie | 1 | 845 | 7,836 | 6,624,422 | 100.1% | 8.2 | 8.2 | 21,525 |
| Turkey Point | 4 | 703 | 8,538 | 6,003,740 | 100.0% | 7.5 | 15.7 | 16,193 |
| St. Lucie | 2 | 719 | 7,836 | 5,630,687 | 99.9% | 7.0 | 22.7 | 18,056 |
| Turkey Point | 3 | 703 | 7,836 | 5,517,249 | 100.2% | 6.9 | 29.6 | 15,440 |
| Scherer | 4 | 597 | 8,036 | 4,788,089 | 99.8% | 6.0 | 35.6 | 84,462 |
| Martin | 4 | 458 | 8,475 | 3,831,437 | 98.6% | 4.8 | 40.3 | 101,031 |
| Martin | 3 | 458 | 7,909 | 3,603,864 | 99.4% | 4.5 | 44.8 | 95,678 |
| Ft. lauderdale | 5 | 438 | 8,202 | 3,536,959 | 98.6% | 4.4 | 49.2 | 100,954 |
| Manatee | 2 | 801 | 5,681 | 3,533,859 | 77.7% | 4.4 | 53.6 | 134,830 |
| Ft. lauderdale | 4 | 438 | 8,217 | 3,530,878 | 98.2% | 4.4 | 58.0 | 101,440 |
| Martin | 1 | 826 | 4,763 | 3,034,494 | 77.1% | 3.8 | 61.8 | 117,637 |
| Martin | 2 | 815 | 4,283 | 2,662,350 | 76.3% | 3.3 | 65.1 | 103,479 |
| Port Everglades | 4 | 403 | 7,154 | 2,510,575 | 87.1% | 3.1 | 68.2 | 90,668 |
| Port Everglades | 3 | 391 | 6,724 | 2,320,014 | 88.3% | 2.9 | 71.1 | 83,431 |
| Turkey Point | 1 | 402 | 6,751 | 2,271,637 | 83.7% | 2.8 | 74.0 | 82,262 |
| Cape Canaveral | 2 | 402 | 6,153 | 2,007,929 | 81.2% | 2.5 | 76.5 | 74,149 |
| Cape Canaveral | 1 | 396 | 5,925 | 1,983,622 | 84.6% | 2.5 | 78.9 | 72,686 |
| Manatee | 1 | 801 | 3,277 | 1,919,212 | 73.1% | 2.4 | 81.3 | 73,659 |
| Ft. Myers | 2 | 398 | 4,938 | 1,798,616 | 91.5% | 2.2 | 83.5 | 63,107 |
| Putnam | 1 | 244 | 7,563 | 1,671,768 | 90.7% | 2.1 | 85.6 | 53,555 |
| Turkey Point | 2 | 401 | 5,031 | 1,644,382 | 81.5% | 2.0 | 87.7 | 60,983 |
| Ft. Myers CT | 1 | 755 | 2,984 | 1,604,498 | 71.2% | 2.0 | 89.7 | 64,093 |
| Putnam | 2 | 244 | 6,864 | 1,533,005 | 91.7% | 1.9 | 91.6 | 48,884 |
| St. Johns River | 2 | 122 | 8,760 | 1,071,783 | 100.3% | 1.3 | 92.9 | 13,251 |
| St. Johns River | 1 | 122 | 8,112 | 992,706 | 100.3% | 1.2 | 94.2 | 12,404 |
| Sanford | 4 | 382 | 2,603 | 915,594 | 92.0% | 1.1 | 95.3 | 35,539 |
| Riviera | 4 | 291 | 2,536 | 668,736 | 90.7% | 0.8 | 96.1 | 25,876 |
| Port Everglades | 2 | 211 | 2,856 | 565,546 | 93.7% | 0.7 | 96.8 | 21,551 |
| Sanford | 5 | 382 | 1,528 | 517,107 | 88.5% | 0.6 | 97.5 | 20,406 |
| Riviera | 3 | 279 | 1,473 | 367,733 | 89.5% | 0.5 | 97.9 | 14,642 |
| Port Everglades | 1 | 211 | 1,694 | 324,700 | 90.7% | 0.4 | 98.3 | 12,827 |
| Ft. Myers GT | 1-12 | 582 | 575 | 315,228 | 94.2% | 0.4 | 98.7 | 22,069 |
| Ft. Myers | 1 | 141 | 2,236 | 278,783 | 88.2% | 0.3 | 99.1 | 10,818 |
| Sanford | 3 | 145 | 1,721 | 206,566 | 82.9% | 0.3 | 99.3 | 8,034 |
| Martin SC | 1 | 315 | 945 | 188,904 | 63.5% | 0.2 | 99.6 | 8,030 |
| Ft. lauderdale GT | 1-24 | 719 | 283 | 174,608 | 85.8% | 0.2 | 99.8 | 11,147 |
| Cutler | 6 | 144 | 1,037 | 101,908 | 68.0% | 0.1 | 99.9 | 4,732 |
| Port Everglades GT | 1-12 | 356 | 145 | 44,818 | 86.8% | 0.1 | 100.0 | 3,179 |
| Cutler | 5 | 71 | 770 | 25,967 | 47.2% | 0.0 | 100.0 | 1,428 |
| Total | | 17,111 | 188,250 | 80,323,973 | | 100.0 | 100.0 | 1,903,936 |

*From E4 Schedule (simple avg 5 month of winter + 7 month of summer)

**FLORIDA POWER & LIGHT COMPANY
UNITS TO BE USED TO DETERMINE THE
GENERATING PERFORMANCE INCENTIVE FACTOR**

JANUARY THROUGH DECEMBER, 2001

Cape Canaveral Unit No. 1
Cape Canaveral Unit No.2

Lauderdale Unit No.4
Lauderdale Unit No.5

Manatee Unit No.1
Manatee Unit No.2

Martin Unit No.1
Martin Unit No.2

Martin Unit No.3
Martin Unit No.4

Port Everglades Unit No.3
Port Everglades Unit No.4

Turkey Point Unit No.1

Turkey Point Unit No.3
Turkey Point Unit No.4

St.Lucie Unit No.1
St.Lucie Unit No.2

Scherer Unit No.4

GENERATING PERFORMANCE INCENTIVE FACTOR

REWARD/PENALTY TABLE (ESTIMATED)

FLORIDA POWER & LIGHT COMPANY
JANUARY THROUGH DECEMBER, 2001

| Generating Performance Incentive Points (GPIF) | Fuel Savings/(Loss) (\$000) | Generating Performance Incentive Factor (\$000) |
|--|-----------------------------------|---|
| + 10 | 64,053.00 | 20,664.20 |
| + 9 | 57,647.70 | 18,597.78 |
| + 8 | 51,242.40 | 16,531.36 |
| + 7 | 44,837.10 | 14,464.94 |
| + 6 | 38,431.80 | 12,398.52 |
| + 5 | 32,026.50 | 10,332.10 |
| + 4 | 25,621.20 | 8,265.68 |
| + 3 | 19,215.90 | 6,199.26 |
| + 2 | 12,810.60 | 4,132.84 |
| + 1 | 6,405.30 | 2,066.42 |
| 0 | 0.00 | 0.00 |
| - 1 | 571.80 | (2,066.42) |
| - 2 | 1,143.60 | (4,132.84) |
| - 3 | 1,715.40 | (6,199.26) |
| - 4 | 2,287.20 | (8,265.68) |
| - 5 | 2,859.00 | (10,332.10) |
| - 6 | 3,430.80 | (12,398.52) |
| - 7 | 4,002.60 | (14,464.94) |
| - 8 | 4,574.40 | (16,531.36) |
| - 9 | 5,146.20 | (18,597.78) |
| - 10 | 5,718.00 | (20,664.20) |

GENERATING PERFORMANCE INCENTIVE FACTOR

CALCULATION OF MAXIMUM ALLOWED INCENTIVE DOLLARS

ESTIMATED

FLORIDA POWER & LIGHT COMPANY
PERIOD OF: JANUARY THROUGH DECEMBER, 2001

| | | | | |
|---------|---|------|----|--------------------|
| LINE 1 | BEGINNING OF PERIOD BALANCE OF COMMON EQUITY | | \$ | 4,792,229,295 |
| | END OF MONTH BALANCE OF COMMON EQUITY | | | |
| LINE 2 | MONTH OF JANUARY | 2001 | \$ | 5,054,720,352 |
| LINE 3 | MONTH OF FEBRUARY | 2001 | \$ | 5,044,812,369 |
| LINE 4 | MONTH OF MARCH | 2001 | \$ | 5,054,324,796 |
| LINE 5 | MONTH OF APRIL | 2001 | \$ | 5,056,395,294 |
| LINE 6 | MONTH OF MAY | 2001 | \$ | 5,074,472,494 |
| LINE 7 | MONTH OF JUNE | 2001 | \$ | 5,093,521,275 |
| LINE 8 | MONTH OF JULY | 2001 | \$ | 5,096,928,035 |
| LINE 9 | MONTH OF AUGUST | 2001 | \$ | 5,116,574,032 |
| LINE 10 | MONTH OF SEPTEMBER | 2001 | \$ | 5,101,361,141 |
| LINE 11 | MONTH OF OCTOBER | 2001 | \$ | 5,074,865,647 |
| LINE 12 | MONTH OF NOVEMBER | 2001 | \$ | 5,063,947,078 |
| LINE 13 | MONTH OF DECEMBER | 2001 | \$ | 5,063,733,208 |
| LINE 14 | AVERAGE COMMON EQUITY FOR THE PERIOD (SUMMATION OF LINE 1 THROUGH LINE 13 DIVIDED BY 13) | | \$ | 5,052,914,000 |
| LINE 15 | 25 BASIS POINTS | | | 0.0025 |
| LINE 16 | REVENUE EXPANSION FACTOR | | | 60.4594% |
| LINE 17 | MAXIMUM ALLOWED INCENTIVE DOLLARS (LINE 14 TIMES LINE 15 DIVIDED BY LINE 16) | | \$ | 20,893,831 |
| LINE 18 | JURISDICTIONAL SALES | | | 89,259,918,762 KWH |
| LINE 19 | TOTAL SALES | | | 90,251,831,222 KWH |
| LINE 20 | JURISDICTIONAL SEPARATION FACTOR (LINE 18 DIVIDED BY LINE 19) | | | 98.90% |
| LINE 21 | MAXIMUM ALLOWED JURISDICTIONAL INCENTIVE DOLLARS | | \$ | 20,664,198 |

GPIF TARGET AND RANGE SUMMARY**FLORIDA POWER & LIGHT COMPANY
PERIOD OF: JANUARY THROUGH DECEMBER, 2001**

| Plant / Unit | Weighting Factor (%) | EAF Target (%) | EAF Range | | Max. Fuel Savings (\$000's) | Max. Fuel Loss (\$000's) |
|---------------------|-------------------------------------|-------------------------------|---------------------|---------------------|--|---|
| | | | Max. (%) | Min. (%) | | |
| Cape Canaveral 1 | 0.23 | 84.5 | 87.5 | 81.5 | 147.99 | -148.21 |
| Cape Canaveral 2 | 0.19 | 94.5 | 97.0 | 92.0 | 121.44 | -121.74 |
| Lauderdale 4 | 0.78 | 93.2 | 95.2 | 91.2 | 499.88 | -498.13 |
| Lauderdale 5 | 0.78 | 93.2 | 95.2 | 91.2 | 499.66 | -497.08 |
| Manatee 1 | 0.42 | 78.3 | 81.3 | 75.3 | 270.39 | -272.42 |
| Manatee 2 | 0.39 | 90.1 | 93.1 | 87.1 | 251.20 | -256.15 |
| Martin 1 | 0.34 | 87.7 | 90.7 | 84.7 | 216.12 | -219.52 |
| Martin 2 | 0.37 | 90.9 | 93.9 | 87.9 | 238.17 | -241.04 |
| Martin 3 | 0.84 | 92.5 | 94.5 | 90.5 | 538.19 | -642.02 |
| Martin 4 | 1.05 | 93.1 | 95.6 | 90.6 | 672.74 | -888.48 |
| Port Everglades 3 | 0.17 | 84.5 | 87.0 | 82.0 | 106.19 | -107.26 |
| Port Everglades 4 | 0.16 | 93.7 | 96.2 | 91.2 | 104.86 | -105.91 |
| Turkey Point 1 | 0.18 | 92.4 | 94.9 | 89.9 | 117.69 | -117.84 |
| Turkey Point 3 | 7.24 | 86.0 | 89.0 | 83.0 | 4,638.35 | -5,548.40 |
| Turkey Point 4 | 7.96 | 93.6 | 96.6 | 90.6 | 5,096.41 | -6,095.60 |
| St. Lucie 1 | 8.78 | 85.7 | 88.7 | 82.7 | 5,623.30 | -6,695.96 |
| St. Lucie 2 | 7.36 | 85.7 | 88.7 | 82.7 | 4,716.49 | -5,641.19 |
| Scherer 4 | 4.14 | 87.9 | 89.9 | 85.9 | 2,652.15 | -2,664.40 |
| | <u>41.39</u> | | | | <u>26,511.20</u> | <u>-30,761.34</u> |

GPIF TARGET AND RANGE SUMMARY

 FLORIDA POWER & LIGHT COMPANY
 PERIOD OF: JANUARY THROUGH DECEMBER, 2001

| Plant / Unit | Weighting Factor (%) | ANOHR TARGET | | ANOHR RANGE | | Max. Fuel Savings (\$000's) | Max. Fuel Loss (\$000's) |
|-------------------|----------------------------|--------------|-------|-------------|---------|--------------------------------------|-----------------------------------|
| | | BTU/KWH | NOF | BTU/KWH | BTU/KWH | | |
| Cape Canaveral 1 | 1.39 | 9,581 | 84.6 | 9,389 | 9,773 | 888.07 | -888.07 |
| Cape Canaveral 2 | 0.81 | 9,721 | 81.2 | 9,578 | 9,864 | 518.63 | -518.63 |
| Lauderdale 4 | 1.14 | 7,337 | 98.2 | 7,209 | 7,465 | 732.19 | -732.19 |
| Lauderdale 5 | 1.55 | 7,336 | 98.6 | 7,188 | 7,483 | 994.79 | -994.79 |
| Manatee 1 | 3.25 | 10,066 | 73.1 | 9,706 | 10,426 | 2,084.78 | -2,084.78 |
| Manatee 2 | 3.93 | 10,216 | 77.7 | 9,950 | 10,482 | 2,519.08 | -2,519.08 |
| Martin 1 | 7.75 | 9,734 | 77.1 | 9,248 | 10,219 | 4,966.14 | -4,966.14 |
| Martin 2 | 4.94 | 9,876 | 76.3 | 9,500 | 10,253 | 3,162.28 | -3,162.28 |
| Martin 3 | 1.89 | 6,874 | 99.4 | 6,712 | 7,036 | 1,211.17 | -1,211.17 |
| Martin 4 | 2.40 | 6,797 | 98.6 | 6,619 | 6,976 | 1,539.69 | -1,539.69 |
| Port Everglades 3 | 4.01 | 9,447 | 88.3 | 9,082 | 9,813 | 2,566.57 | -2,566.57 |
| Port Everglades 4 | 4.44 | 9,632 | 87.1 | 9,255 | 10,008 | 2,840.86 | -2,840.86 |
| Turkey Point 1 | 1.60 | 9,319 | 83.7 | 9,128 | 9,510 | 1,024.93 | -1,024.93 |
| Turkey Point 3 | 5.83 | 11,121 | 100.2 | 10,893 | 11,350 | 3,732.59 | -3,244.19 |
| Turkey Point 4 | 7.59 | 11,095 | 100.0 | 10,824 | 11,365 | 4,863.17 | -4,495.12 |
| St.Lucie 1 | 3.89 | 10,817 | 100.1 | 10,638 | 10,995 | 2,493.66 | -2,356.27 |
| St.Lucie 2 | 0.88 | 10,821 | 99.9 | 10,717 | 10,925 | 566.32 | -496.42 |
| Scherer 4 | 1.31 | 10,043 | 99.8 | 9,868 | 10,217 | 837.46 | -837.46 |
| | <u>58.61</u> | | | | | <u>37,542.36</u> | <u>-36,478.62</u> |

**PROJECTED UNIT HEAT RATE EQUATIONS
FLORIDA POWER & LIGHT COMPANY
PERIOD OF: JANUARY THROUGH DECEMBER, 2001**

| <u>Plant/Unit</u> | <u>ANQHR</u> | <u>NOF</u> | <u>NSC</u> | <u>ANOHR Equation</u> | | <u>Bounds</u> | <u>R-sqr</u> | <u>First</u> | <u>Last</u> | <u>Exclusions</u> |
|-------------------|--------------|------------|------------|-----------------------|----------|---------------|--------------|--------------|-------------|--------------------------------|
| | | | | <u>a</u> | <u>b</u> | | | | | |
| Cape Canaveral 1 | 9581 | 84.6 | 395.67 | 9974.5 | -4.65 | 192.1 | 0.12 | 06-97 | 05-00 | 11-99 |
| Cape Canaveral 2 | 9727 | 81.2 | 401.67 | 10027.7 | -3.70 | 140.3 | 0.15 | 06-97 | 05-00 | 08-97, 11-97, 03-00 |
| Lauderdale 4 | 7337 | 98.2 | 437.5 | 7898.4 | -5.71 | 128.0 | 0.19 | 06-97 | 05-00 | No exclusions |
| Lauderdale 5 | 7333 | 98.6 | 437.5 | 7994.3 | -6.71 | 149.1 | 0.07 | 06-97 | 05-00 | No exclusions |
| Manatee 1 | 10066 | 73.1 | 800.92 | 11300.4 | -16.88 | 359.9 | 0.28 | 06-97 | 05-00 | 03-98, 12-99 |
| Manatee 2 | 10216 | 77.7 | 800.92 | 10652.4 | -5.62 | 265.9 | 0.09 | 06-97 | 05-00 | 01-98, 01-00-03-00 |
| Martin 1 | 9734 | 77.1 | 826 | 10655.4 | -11.95 | 485.9 | 0.15 | 06-97 | 05-00 | 02-99 - 04-99, 01-00 |
| Martin 2 | 9876 | 76.3 | 814.58 | 10343.8 | -6.13 | 376.8 | 0.05 | 06-97 | 05-00 | 12-97, 01-98, 12-98-03-99 |
| Martin 3 | 6874 | 99.4 | 458.33 | 6935.1 | -0.61 | 162.0 | 0.00 | 06-97 | 05-00 | No exclusions |
| Martin 4 | 6797 | 98.6 | 458.33 | 7166.8 | -3.75 | 181.3 | 0.15 | 06-97 | 05-00 | No exclusions |
| Port Everglades 3 | 9447 | 88.3 | 390.83 | 11335.3 | -21.38 | 365.6 | 0.50 | 06-97 | 05-00 | 04-99 |
| Port Everglades 4 | 9632 | 87.1 | 402.83 | 10774.0 | -13.11 | 376.8 | 0.41 | 06-97 | 05-00 | 10-97, 12-97, 01-98, 05-98, 05 |
| Turkey Point 1 | 9319 | 83.7 | 402.25 | 10500.4 | -14.12 | 191.1 | 0.54 | 06-97 | 05-00 | 01-99, 03-00 |
| Turkey Point 3 | 11121 | 100.2 | 703 | 16103.7 | -49.75 | 228.3 | 0.49 | 06-97 | 05-00 | 10-98, 03-00 |
| Turkey Point 4 | 11095 | 100.0 | 703 | 13944.3 | -28.49 | 270.1 | 0.28 | 06-97 | 05-00 | 09-87, 03-99 |
| St.Lucie 1 | 10817 | 100.1 | 844.83 | 12392.5 | -15.75 | 178.2 | 0.31 | 06-97 | 05-00 | 11-97, 12-97 |
| St.Lucie 2 | 10821 | 99.9 | 719 | 11775.4 | -9.55 | 103.9 | 0.20 | 06-97 | 05-00 | 11/98 |
| Scherer 4 | 10043 | 99.8 | 597 | 10956.7 | -9.16 | 174.6 | 0.23 | 06-97 | 05-00 | 07-98 |

DERIVATION OF WEIGHT FACTORS

FLORIDA POWER & LIGHT COMPANY
PERIOD OF: JANUARY THROUGH DECEMBER, 2001

PRODUCTION COSTING SIMULATION
FUEL COST (\$000'S)

| Unit | Performance Indicator | At Target (1) | At Maximum Improvement (2) | Savings (3) | Factor (% Of Savings) |
|-------------------|-----------------------|---------------|----------------------------|-------------|-----------------------|
| Cape Canaveral 1 | EAF | 1903936 | 1904084 | 148.0 | 0.23 |
| | ANOHR | 1903936 | 1904824 | 888.1 | 1.39 |
| Cape Canaveral 2 | EAF | 1903936 | 1904057 | 121.4 | 0.19 |
| | ANOHR | 1903936 | 1904454 | 518.6 | 0.81 |
| Lauderdale 4 | EAF | 1903936 | 1904436 | 499.9 | 0.78 |
| | ANOHR | 1903936 | 1904668 | 732.2 | 1.14 |
| Lauderdale 5 | EAF | 1903936 | 1904435 | 499.7 | 0.78 |
| | ANOHR | 1903936 | 1904930 | 994.8 | 1.55 |
| Manatee 1 | EAF | 1903936 | 1904206 | 270.4 | 0.42 |
| | ANOHR | 1903936 | 1906020 | 2084.8 | 3.25 |
| Manatee 2 | EAF | 1903936 | 1904187 | 251.2 | 0.39 |
| | ANOHR | 1903936 | 1906455 | 2519.1 | 3.93 |
| Martin 1 | EAF | 1903936 | 1904152 | 216.1 | 0.34 |
| | ANOHR | 1903936 | 1908902 | 4966.1 | 7.75 |
| Martin 2 | EAF | 1903936 | 1904174 | 238.2 | 0.37 |
| | ANOHR | 1903936 | 1907098 | 3162.3 | 4.94 |
| Martin 3 | EAF | 1903936 | 1904474 | 538.2 | 0.84 |
| | ANOHR | 1903936 | 1905147 | 1211.2 | 1.89 |
| Martin 4 | EAF | 1903936 | 1904608 | 672.7 | 1.05 |
| | ANOHR | 1903936 | 1905475 | 1539.7 | 2.40 |
| Port Everglades 3 | EAF | 1903936 | 1904042 | 106.2 | 0.17 |
| | ANOHR | 1903936 | 1906502 | 2566.6 | 4.01 |
| Port Everglades 4 | EAF | 1903936 | 1904041 | 104.9 | 0.16 |
| | ANOHR | 1903936 | 1906777 | 2840.9 | 4.44 |
| Turkey Point 1 | EAF | 1903936 | 1904053 | 117.7 | 0.18 |
| | ANOHR | 1903936 | 1904961 | 1024.9 | 1.60 |
| Turkey Point 3 | EAF | 1903936 | 1908574 | 4638.4 | 7.24 |
| | ANOHR | 1903936 | 1907668 | 3732.6 | 5.83 |
| Turkey Point 4 | EAF | 1903936 | 1909032 | 5096.4 | 7.96 |
| | ANOHR | 1903936 | 1908799 | 4863.2 | 7.59 |
| St.Lucie 1 | EAF | 1903936 | 1909559 | 5623.3 | 8.78 |
| | ANOHR | 1903936 | 1906429 | 2493.7 | 3.89 |
| St.Lucie 2 | EAF | 1903936 | 1908652 | 4716.5 | 7.36 |
| | ANOHR | 1903936 | 1904502 | 566.3 | 0.88 |
| Scherer 4 | EAF | 1903936 | 1906588 | 2652.1 | 4.14 |
| | ANOHR | 1903936 | 1904773 | 837.5 | 1.31 |
| TOTAL | | | | 64053.6 | 100.00 |

(1) FUEL ADJUSTMENT MID BAND CASE - ALL UNIT PERFORMANCE INDICATORS AT TARGET

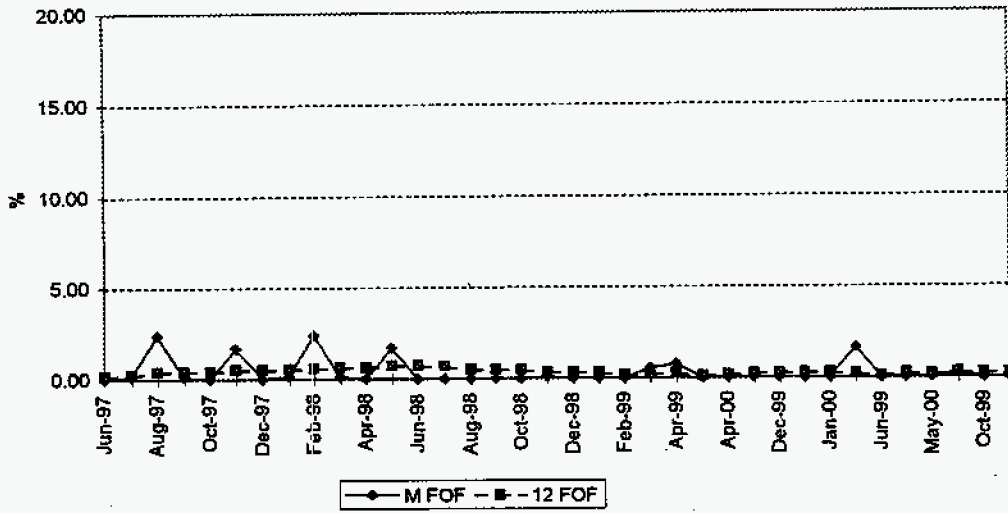
(2) ALL OTHER UNIT PERFORMANCE AT TARGET

(3) EXPRESSED IN REPLACEMENT ENERGY COSTS.

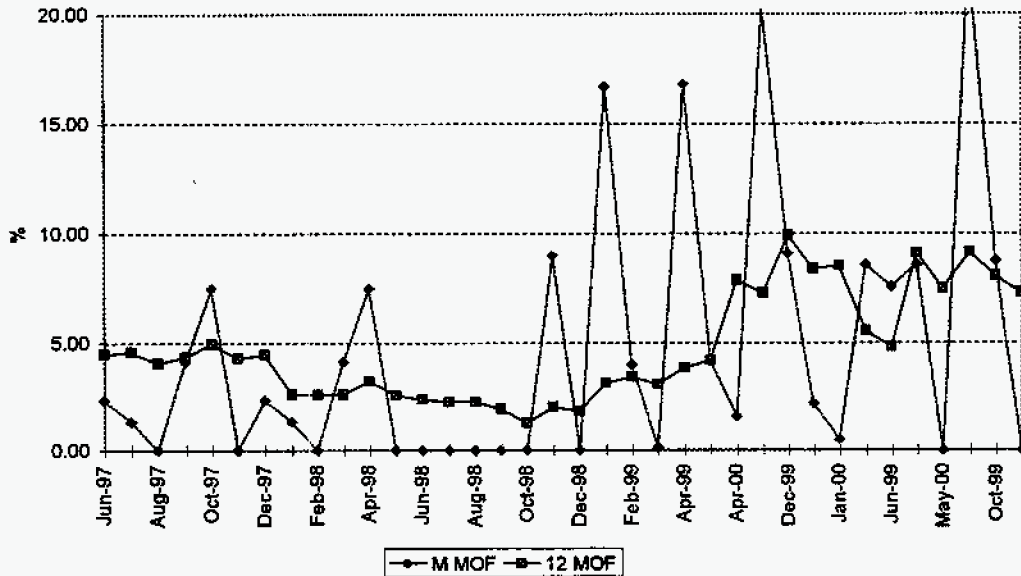
**ESTIMATED UNIT PERFORMANCE DATA
FLORIDA POWER & LIGHT COMPANY
PERIOD OF: JANUARY THROUGH DECEMBER, 2001**

| <u>Plant/Unit</u> | <u>EAF</u> | <u>EPOF</u> | <u>EUOF</u> | <u>EUOR</u> | <u>PH</u> | <u>SH</u> | <u>RSH</u> | <u>UH</u> | <u>EPOH</u> | <u>EFOH</u> | <u>EMOH</u> | <u>NET_GEN</u> |
|-------------------|------------|-------------|-------------|-------------|-----------|-----------|------------|-----------|-------------|-------------|-------------|----------------|
| Cape Canaveral 1 | 84.5 | 7.9 | 7.6 | 10.1 | 8760 | 5925 | 1477.2 | 1357.8 | 692.0 | 157.7 | 508.1 | 1983622 |
| Cape Canaveral 2 | 94.5 | 0.0 | 5.5 | 7.3 | 8760 | 6153 | 2125.2 | 481.8 | 0.0 | 175.2 | 306.6 | 2007929 |
| Lauderdale 4 | 93.2 | 3.0 | 3.8 | 3.9 | 8760 | 8164 | 0.0 | 595.7 | 262.8 | 166.4 | 166.4 | 3530878 |
| Lauderdale 5 | 93.2 | 3.0 | 3.8 | 3.9 | 8760 | 8164 | 0.0 | 595.7 | 262.8 | 166.4 | 166.4 | 3536959 |
| Manatee 1 | 78.3 | 14.2 | 7.5 | 16.7 | 8760 | 3277 | 3582.1 | 1900.9 | 1243.9 | 148.9 | 508.1 | 1919212 |
| Manatee 2 | 90.1 | 0.8 | 9.1 | 12.3 | 8760 | 5681 | 2211.8 | 867.2 | 70.1 | 175.2 | 622.0 | 3533859 |
| Martin 1 | 87.7 | 4.1 | 8.4 | 13.4 | 8760 | 4763 | 2902.0 | 1095.0 | 359.2 | 166.4 | 569.4 | 3034494 |
| Martin 2 | 90.9 | 0.0 | 9.1 | 15.7 | 8760 | 4283 | 3679.8 | 797.2 | 0.0 | 175.2 | 622.0 | 2662350 |
| Martin 3 | 92.5 | 3.4 | 4.1 | 4.3 | 8760 | 7909 | 194.0 | 657.0 | 297.8 | 166.4 | 192.7 | 3603864 |
| Martin 4 | 93.1 | 1.1 | 5.9 | 6.0 | 8760 | 8147 | 0.0 | 613.2 | 96.4 | 315.4 | 201.5 | 3831437 |
| Port Everglades 3 | 84.5 | 10.4 | 5.3 | 6.5 | 8760 | 6724 | 660.7 | 1375.3 | 911.0 | 157.7 | 306.6 | 2320014 |
| Port Everglades 4 | 93.7 | 0.0 | 6.3 | 7.2 | 8760 | 7154 | 1054.1 | 551.9 | 0.0 | 175.2 | 376.7 | 2510575 |
| Turkey Point 1 | 92.4 | 0.0 | 7.6 | 9.0 | 8760 | 6751 | 1343.2 | 665.8 | 0.0 | 175.2 | 490.6 | 2271637 |
| Turkey Point 3 | 86.0 | 8.5 | 5.8 | 6.3 | 8760 | 7507 | 0.0 | 1252.7 | 744.6 | 254.0 | 254.0 | 5517249 |
| Turkey Point 4 | 93.6 | 0.0 | 6.4 | 6.4 | 8760 | 8199 | 0.0 | 560.6 | 0.0 | 280.3 | 280.3 | 6003740 |
| St.Lucie 1 | 85.7 | 8.5 | 5.8 | 6.3 | 8760 | 7507 | 0.0 | 1252.7 | 744.6 | 254.0 | 254.0 | 6624422 |
| St.Lucie 2 | 85.7 | 8.5 | 5.8 | 6.3 | 8760 | 7507 | 0.0 | 1252.7 | 744.6 | 254.0 | 254.0 | 5630687 |
| Scherer 4 | 87.9 | 8.5 | 3.6 | 3.9 | 8760 | 7700 | 0.0 | 1060.0 | 744.6 | 157.7 | 157.7 | 4788089 |

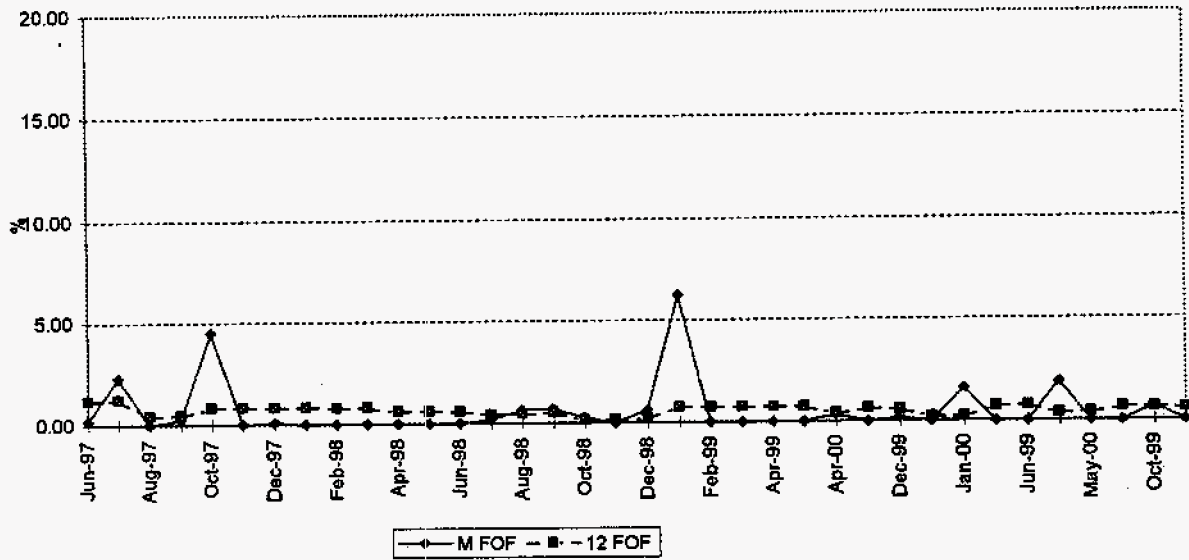
PCC 1 FORCED OUTAGE FACTOR



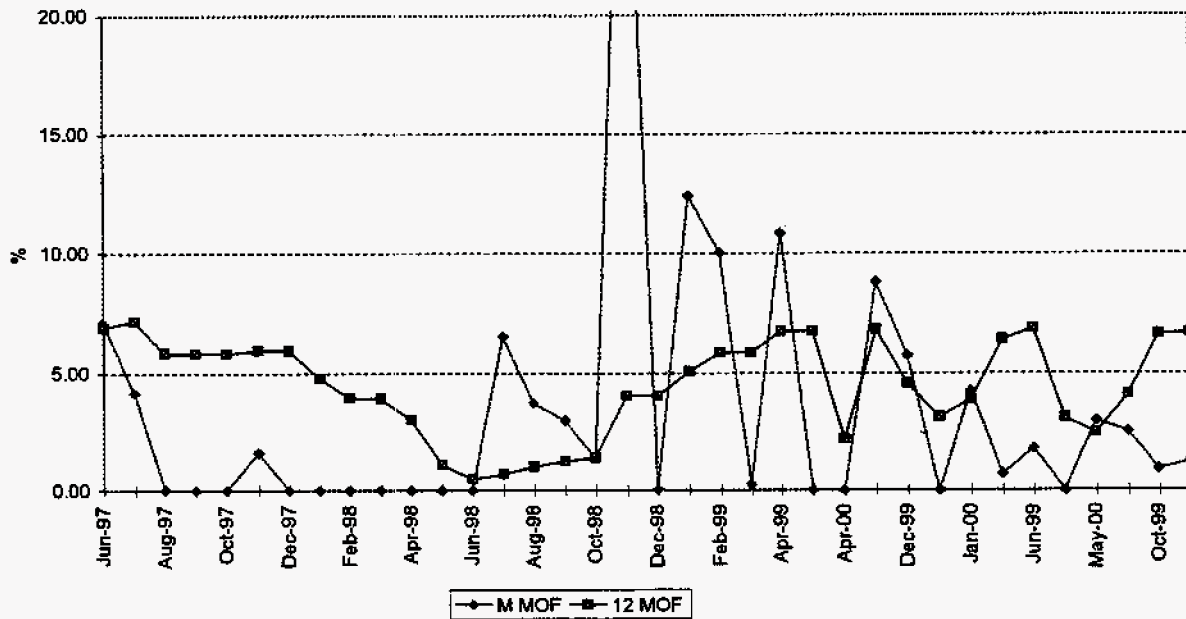
MAINTENANCE OUTAGE FACTOR



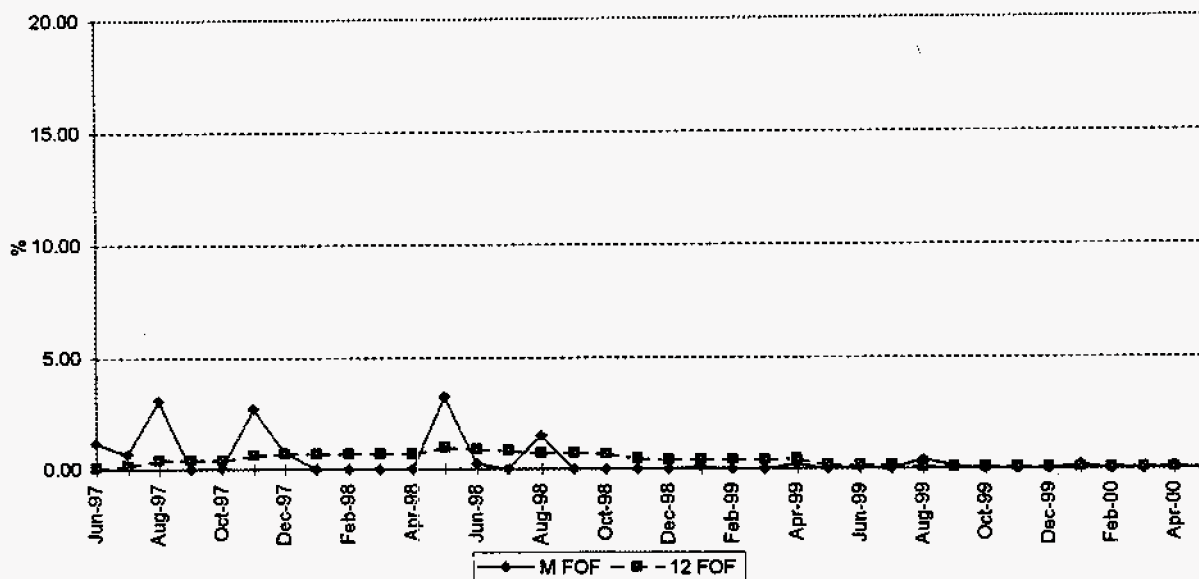
PCC 2 FORCED OUTAGE FACTOR



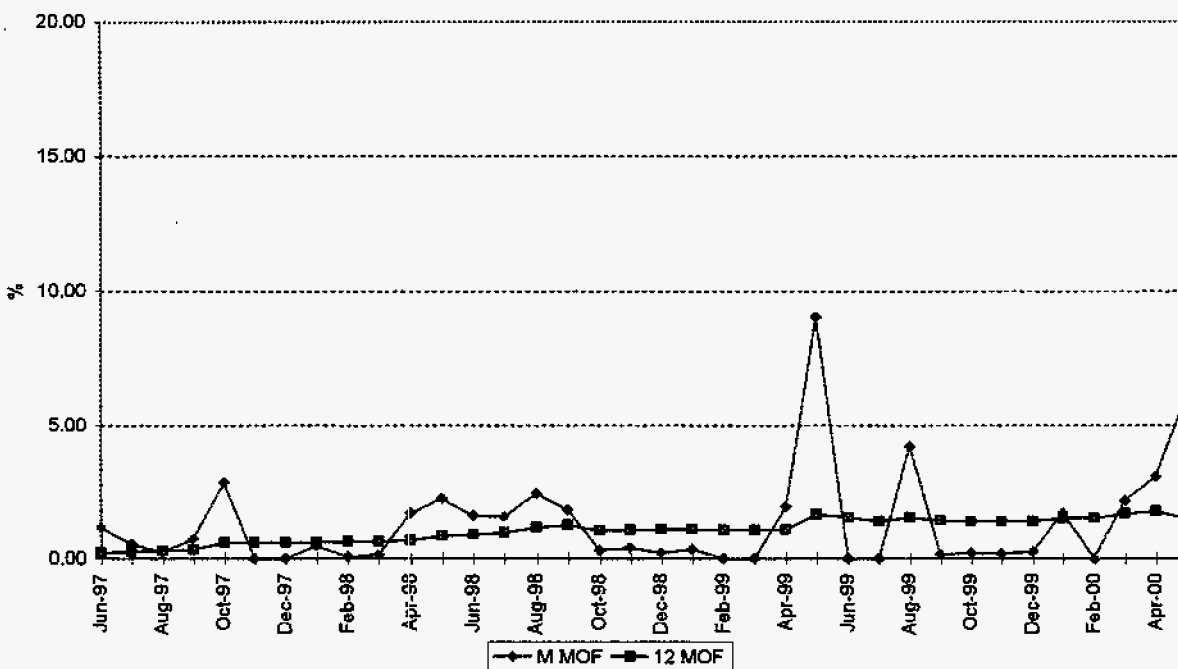
MAINTENANCE OUTAGE FACTOR



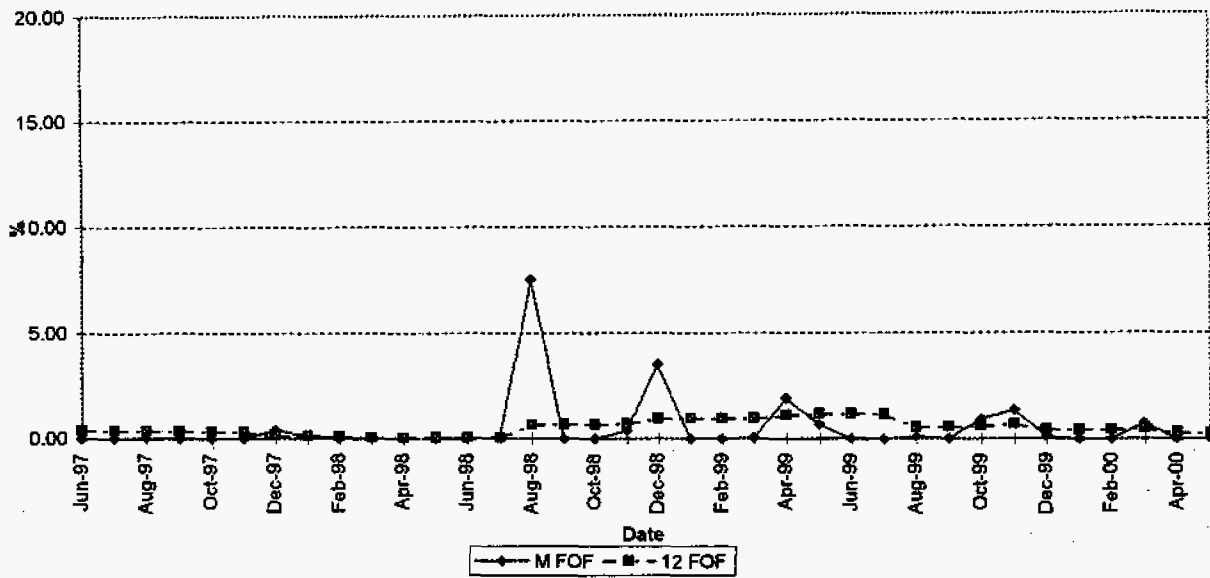
PFL 4 FORCED OUTAGE FACTOR



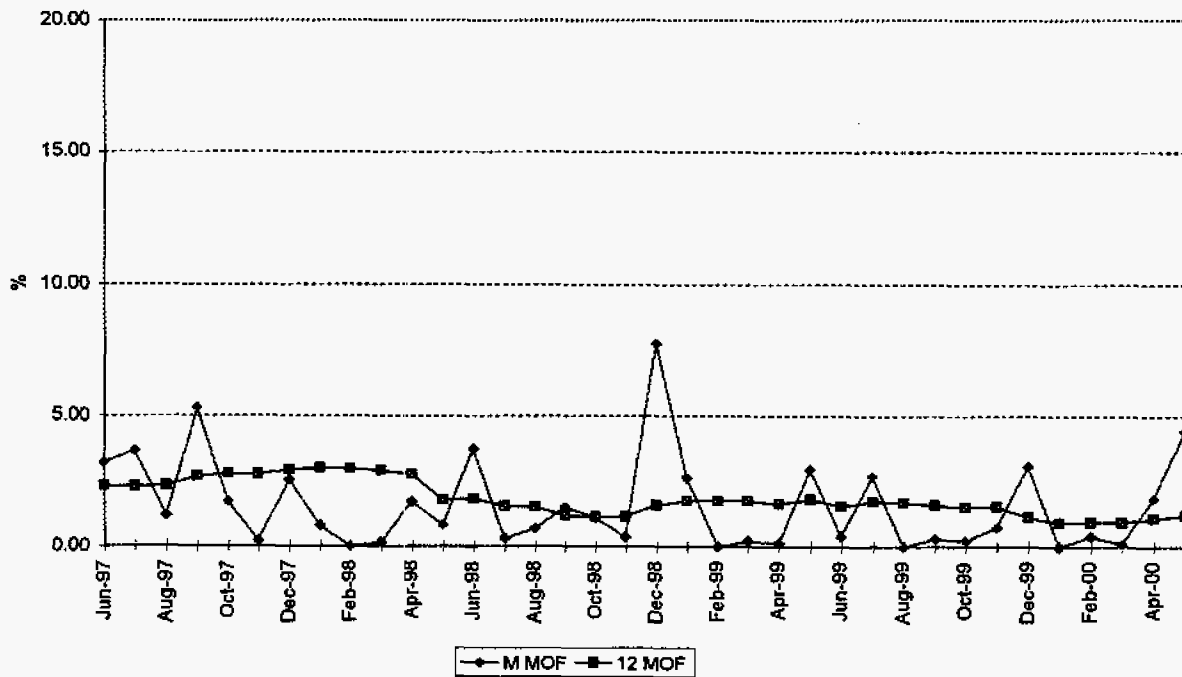
MAINTENANCE OUTAGE FACTOR



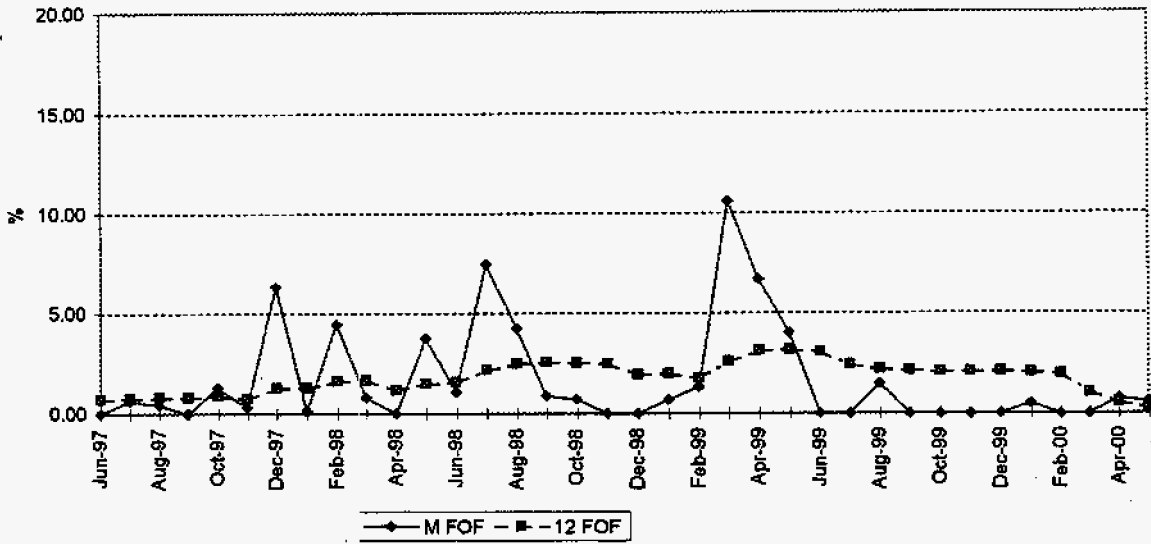
PFL 5 FORCED OUTAGE FACTOR



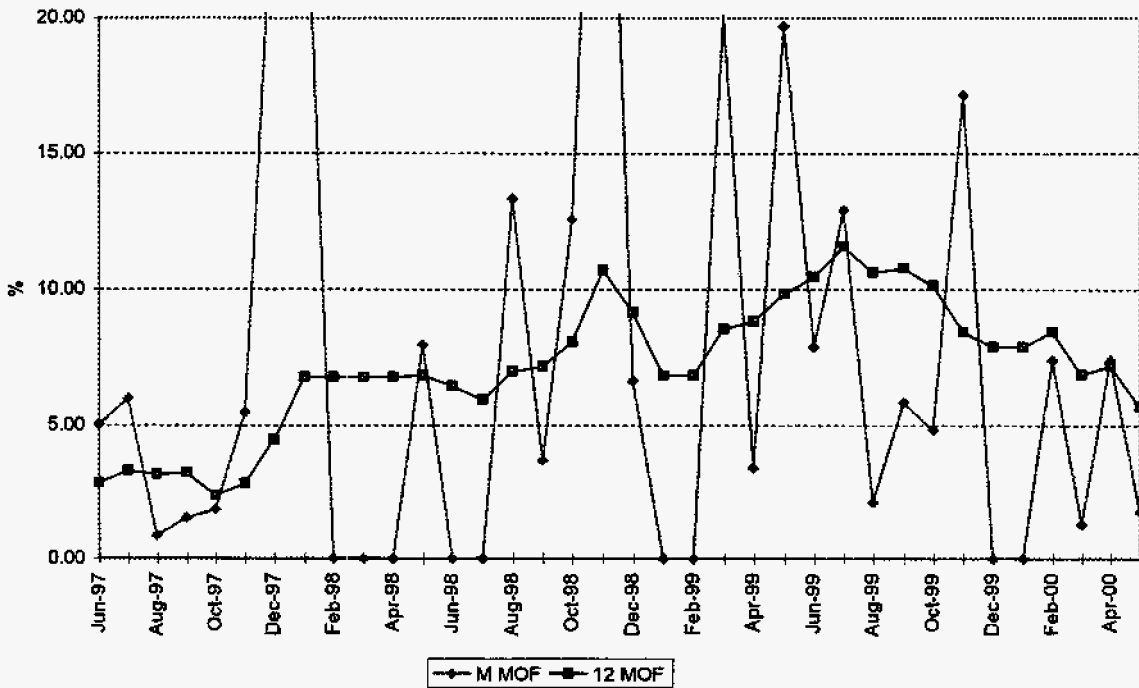
MAINTENANCE OUTAGE FACTOR



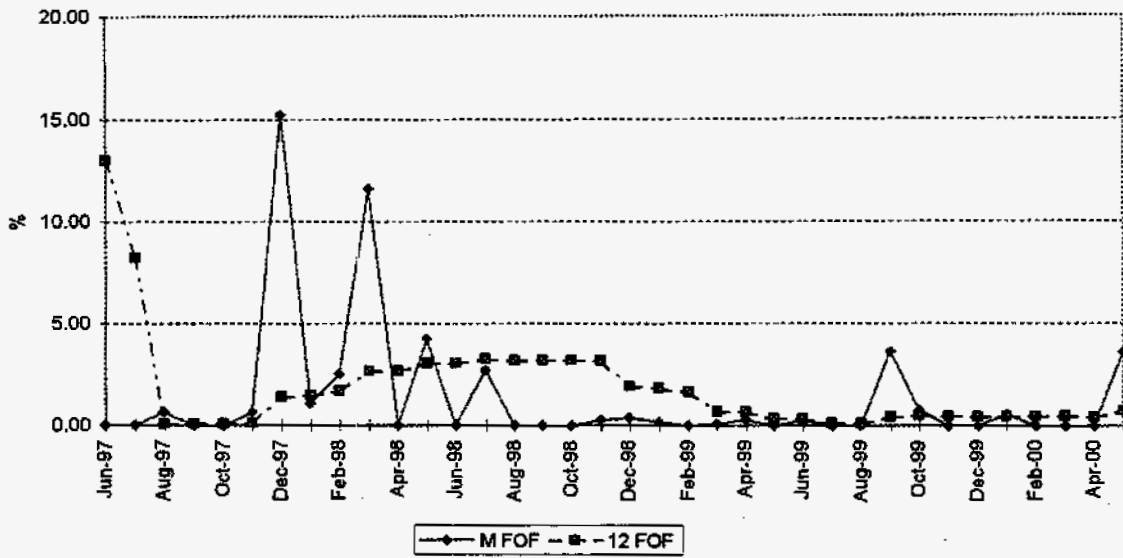
PMT 1 FORCED OUTAGE FACTOR



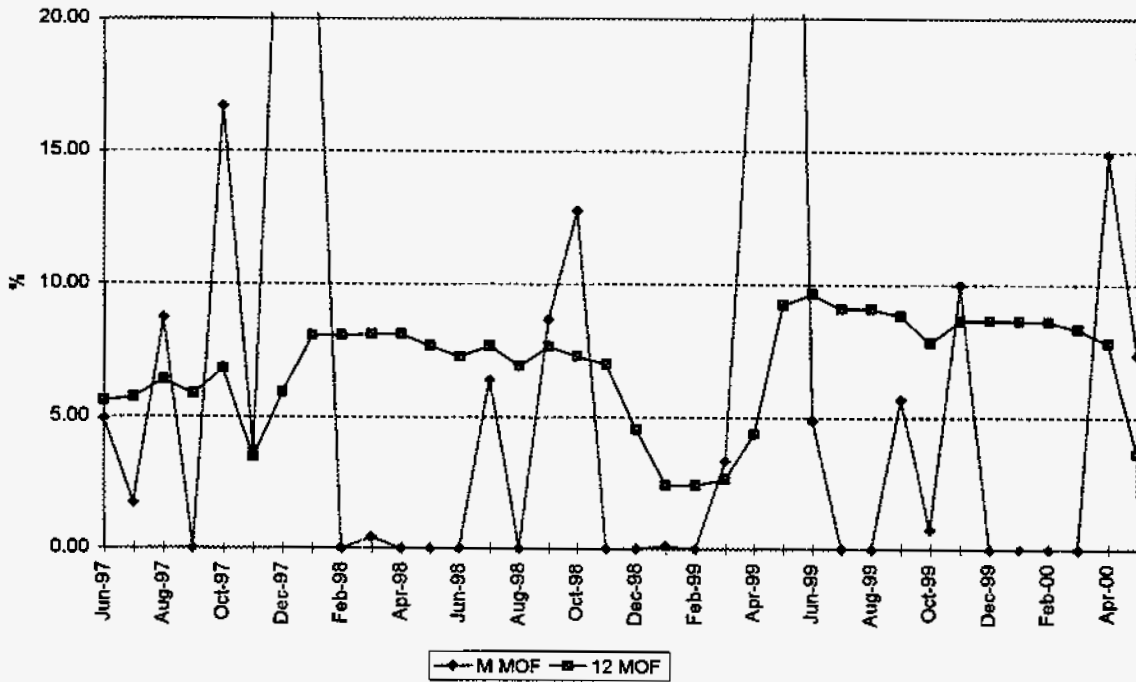
MAINTENANCE OUTAGE FACTOR



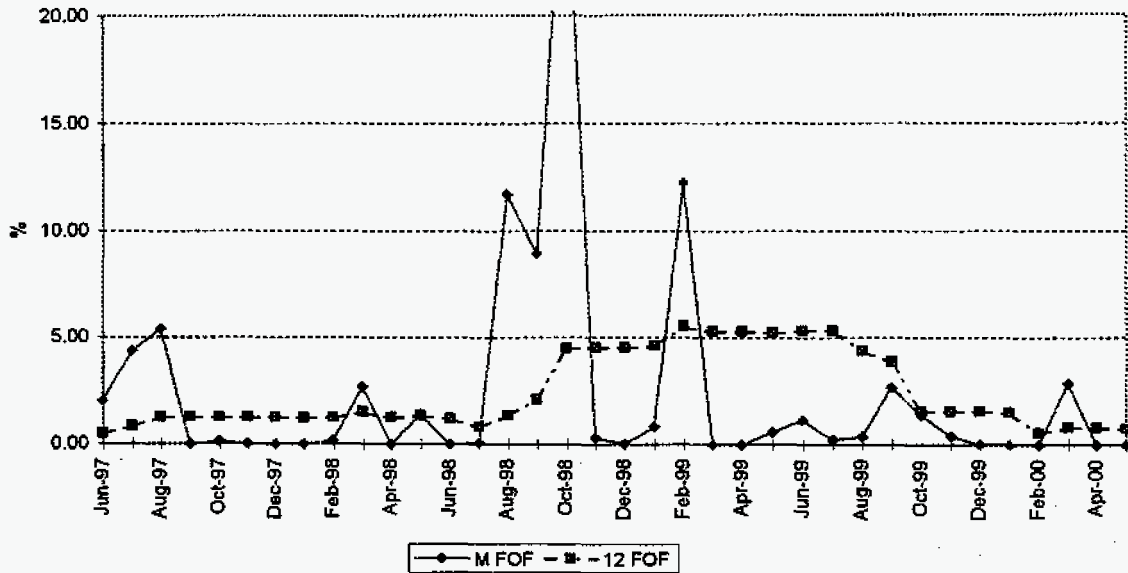
PMT 2 FORCED OUTAGE FACTOR



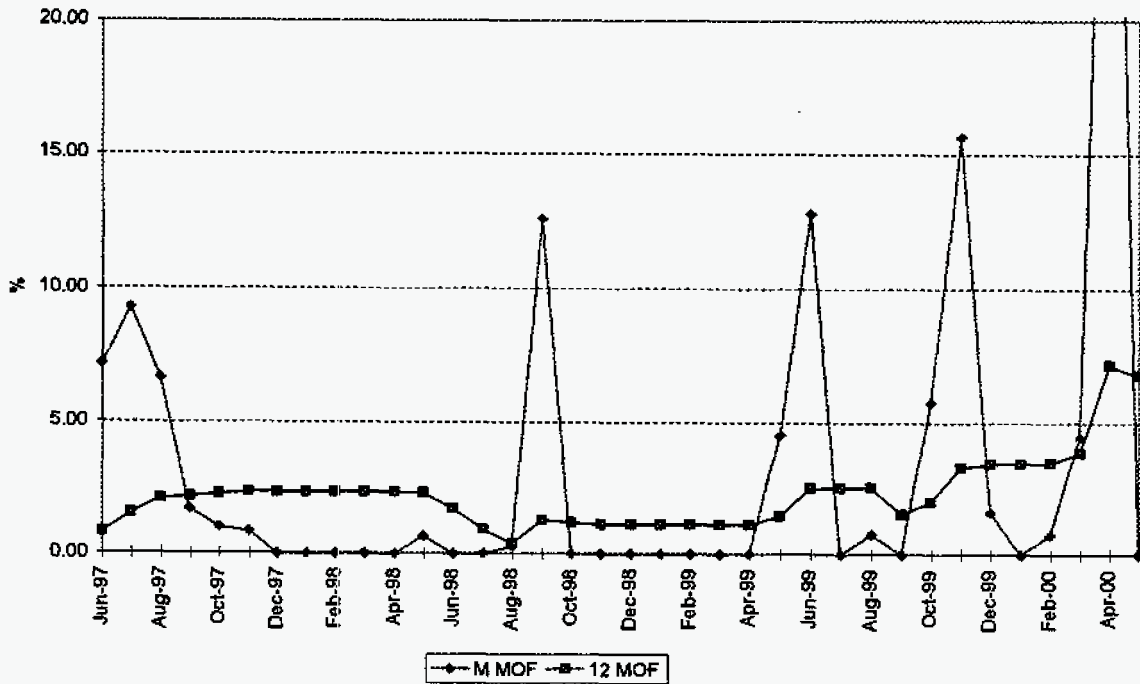
MAINTENANCE OUTAGE FACTOR



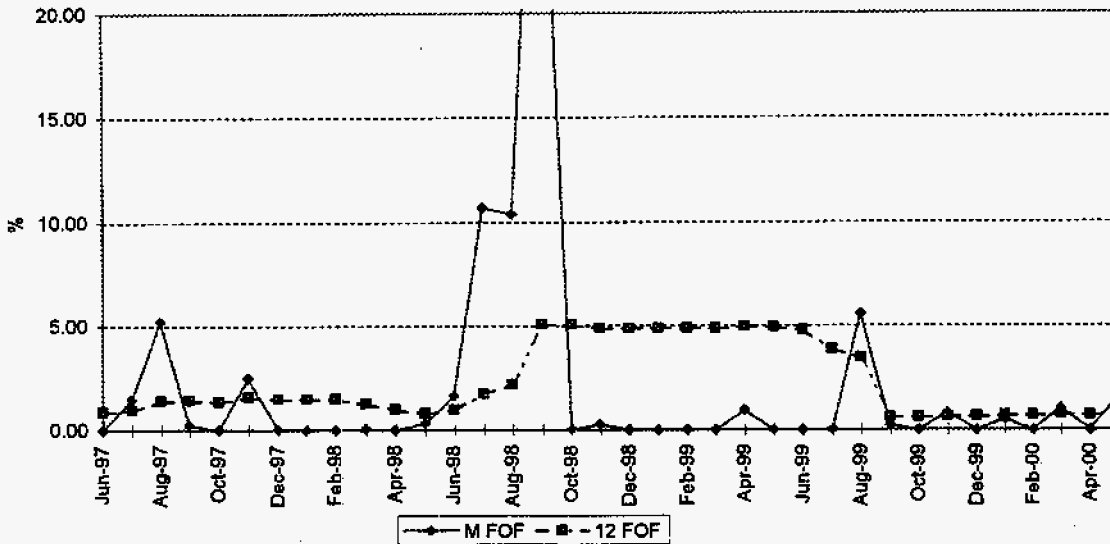
PMR 1 FORCED OUTAGE FACTOR



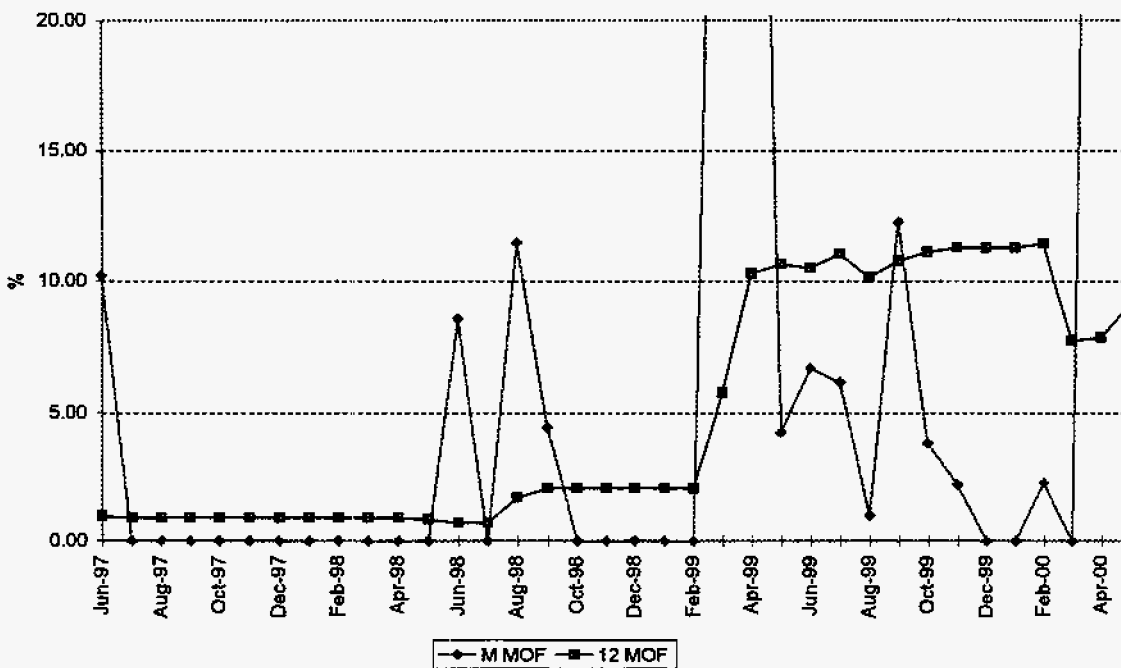
MAINTENANCE OUTAGE FACTOR



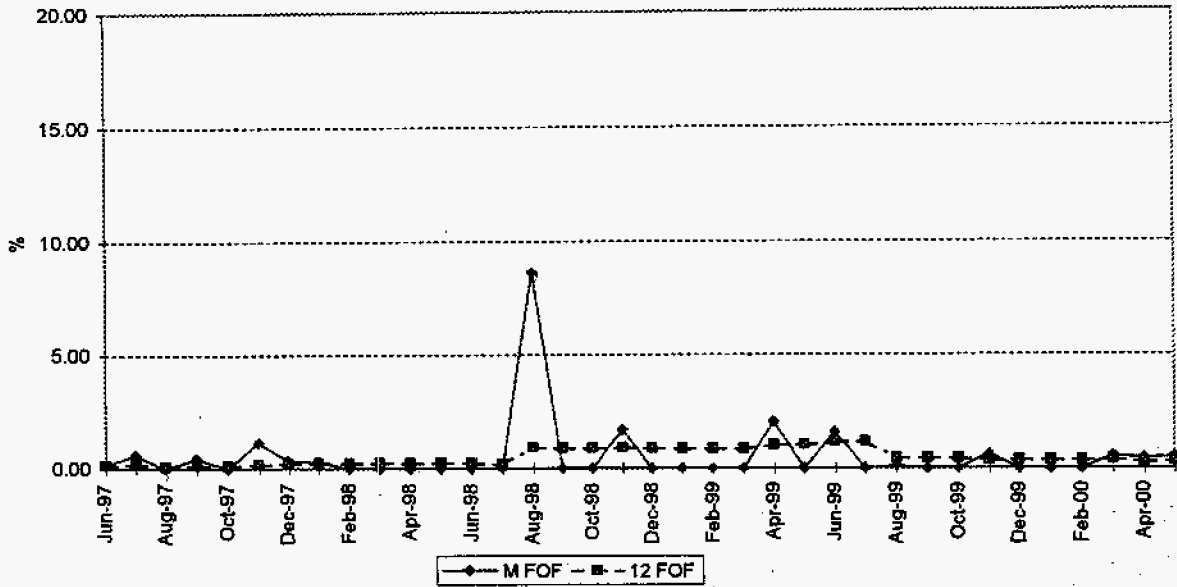
PMR 2 FORCED OUTAGE FACTOR



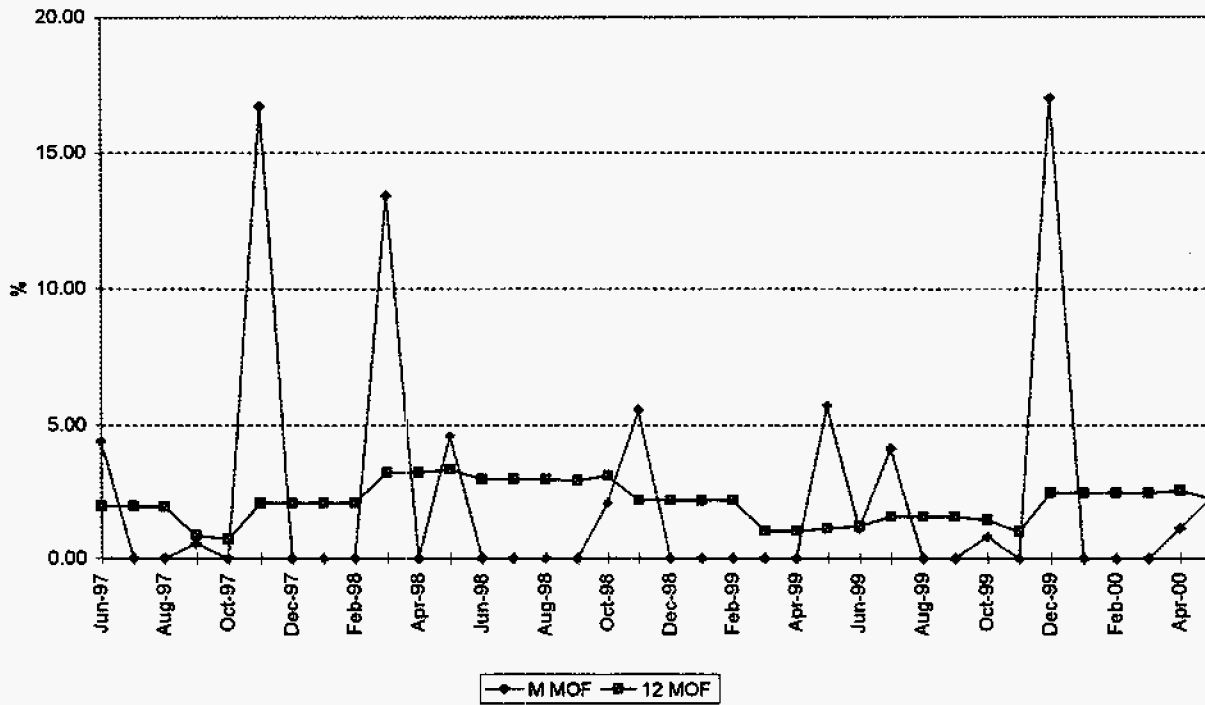
MAINTENANCE OUTAGE FACTOR



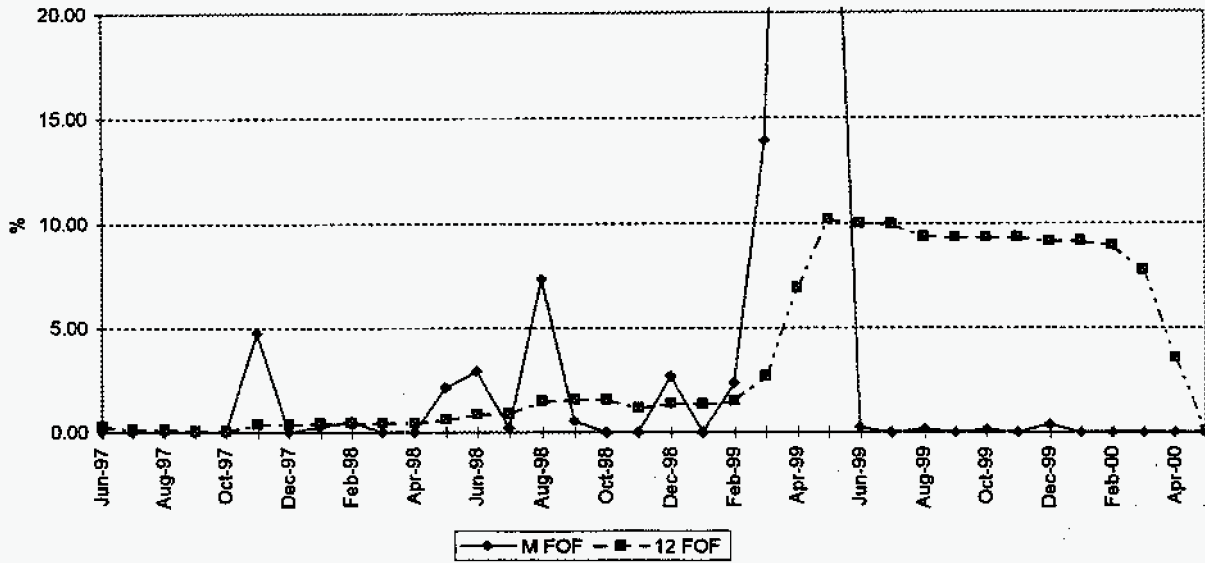
PMG 3 FORCED OUTAGE FACTOR



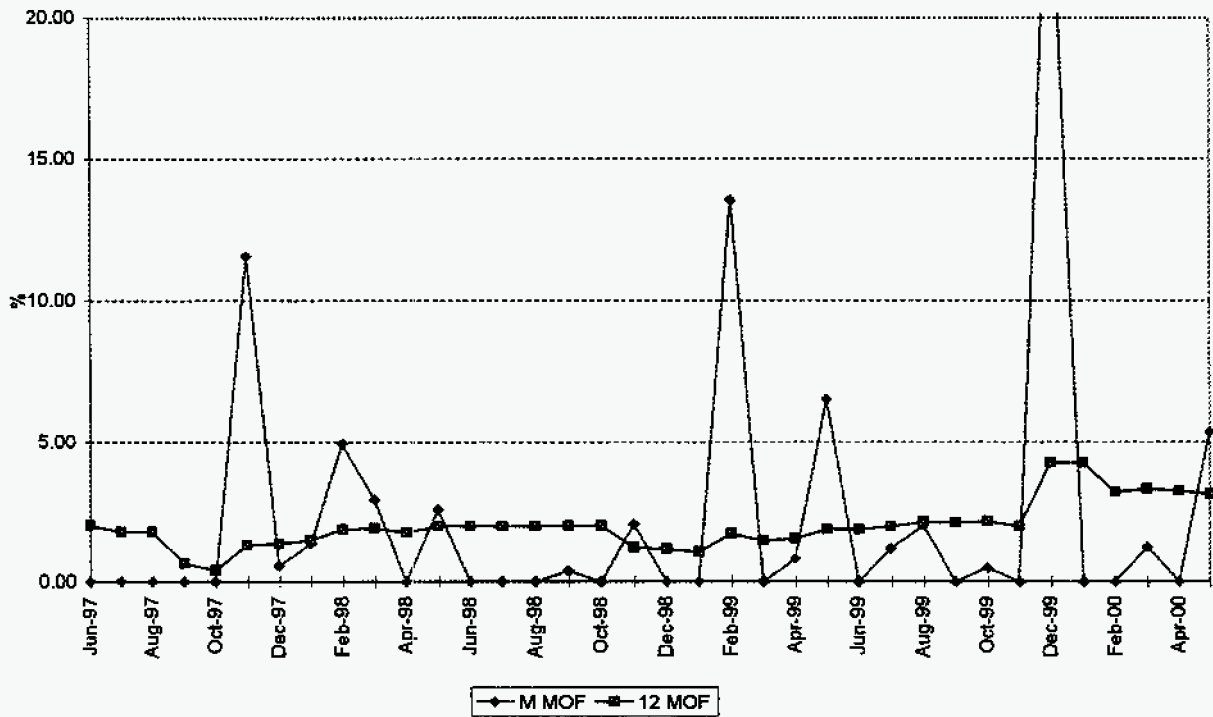
MAINTENANCE OUTAGE FACTOR



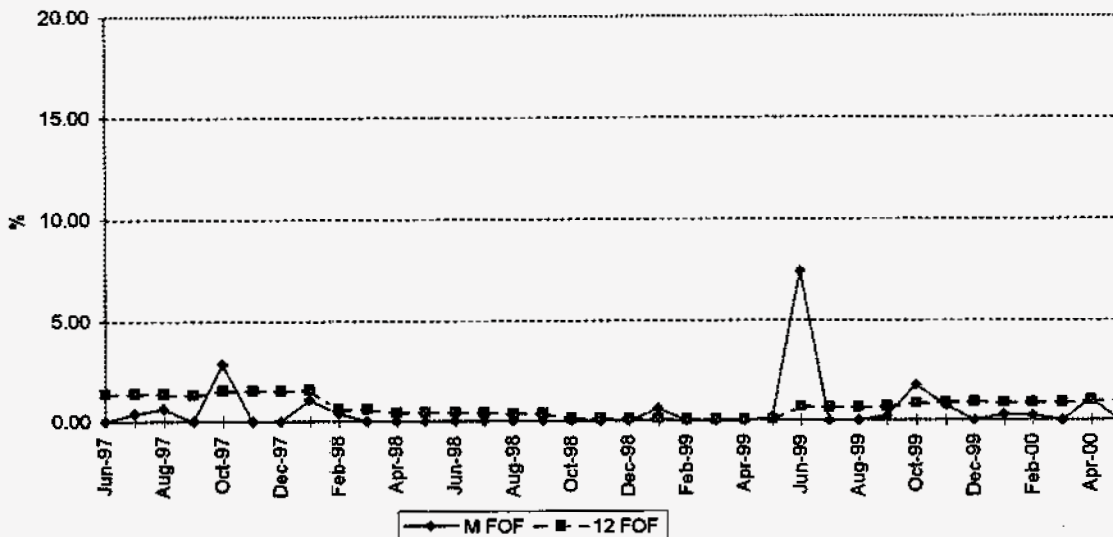
PMG 4 FORCED OUTAGE FACTOR



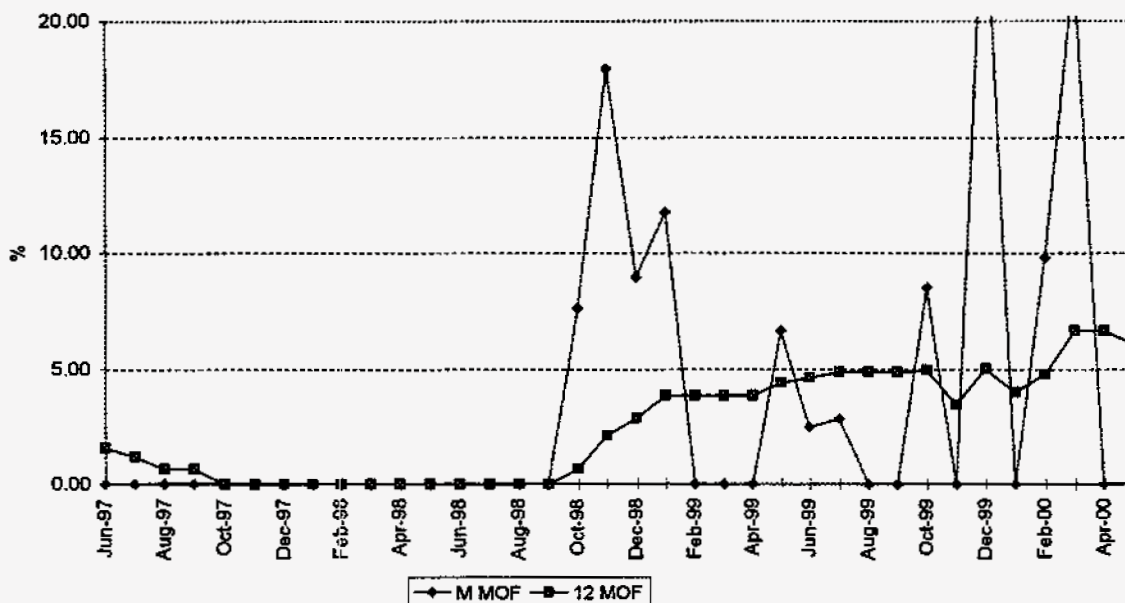
MAINTENANCE OUTAGE FACTOR



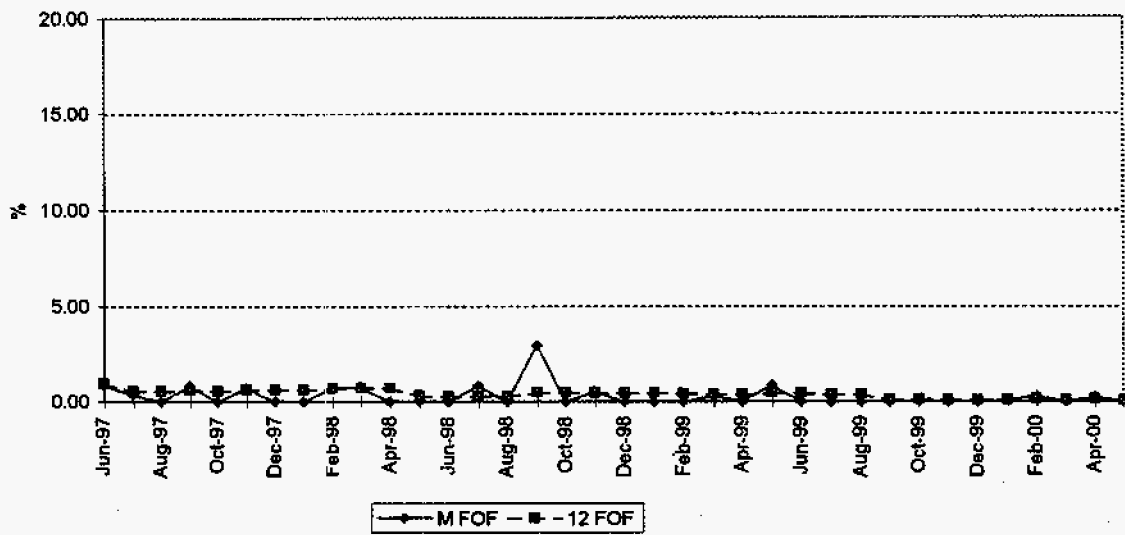
PPE 3 FORCED OUTAGE FACTOR



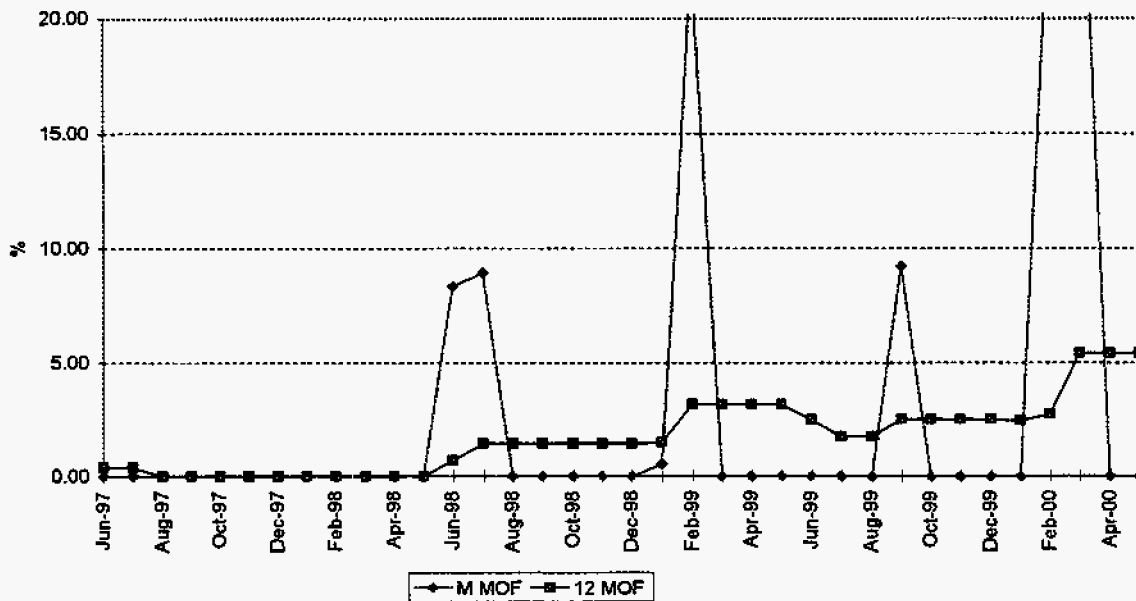
MAINTENANCE OUTAGE FACTOR



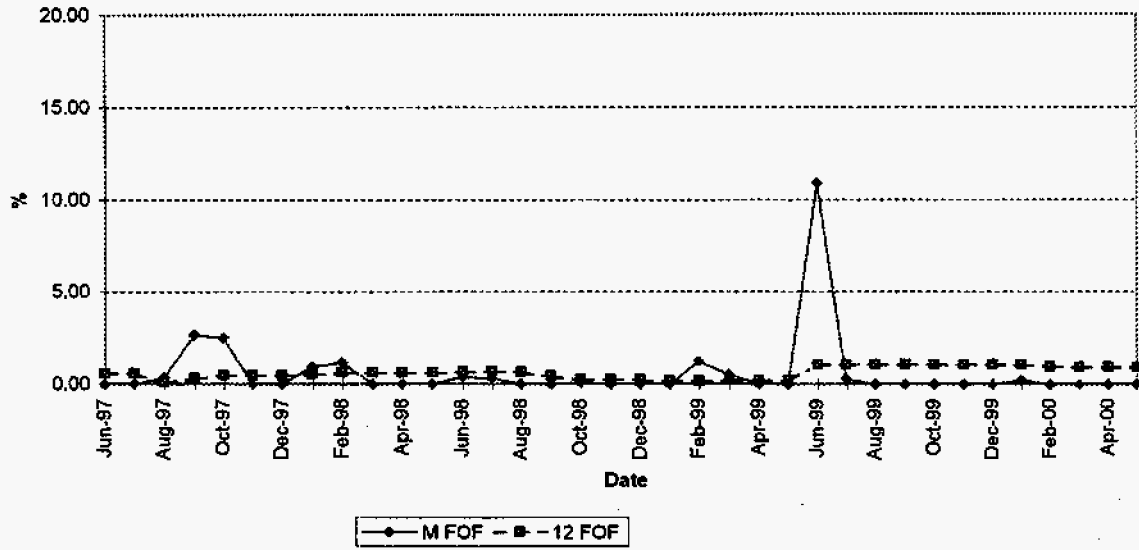
PPE 4 FORCED OUTAGE FACTOR



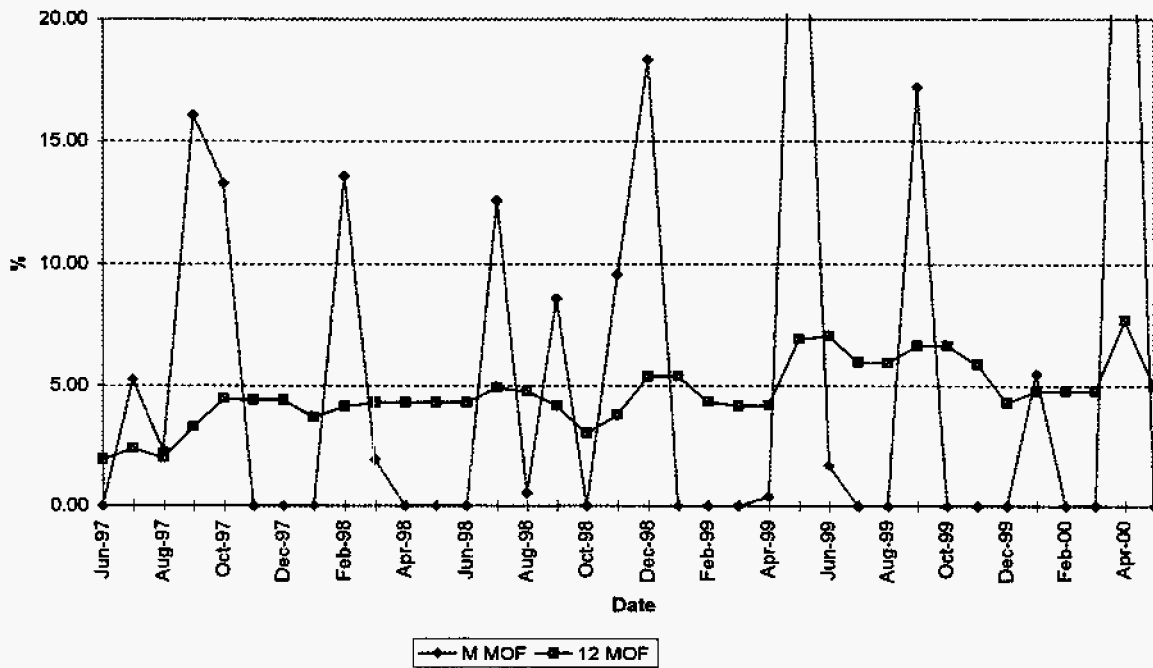
MAINTENANCE OUTAGE FACTOR



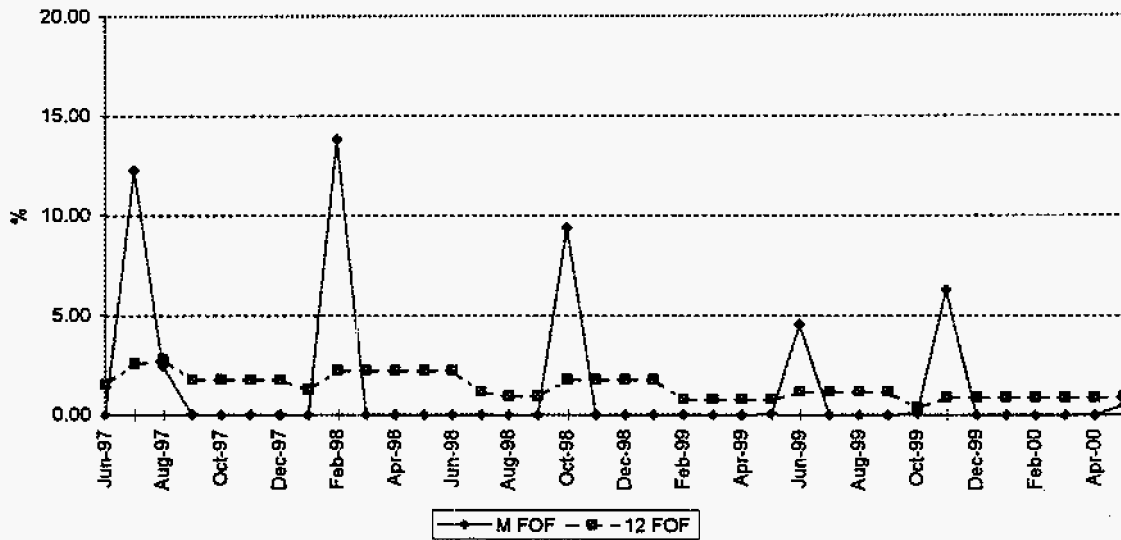
PTP 1 FORCED OUTAGE FACTOR



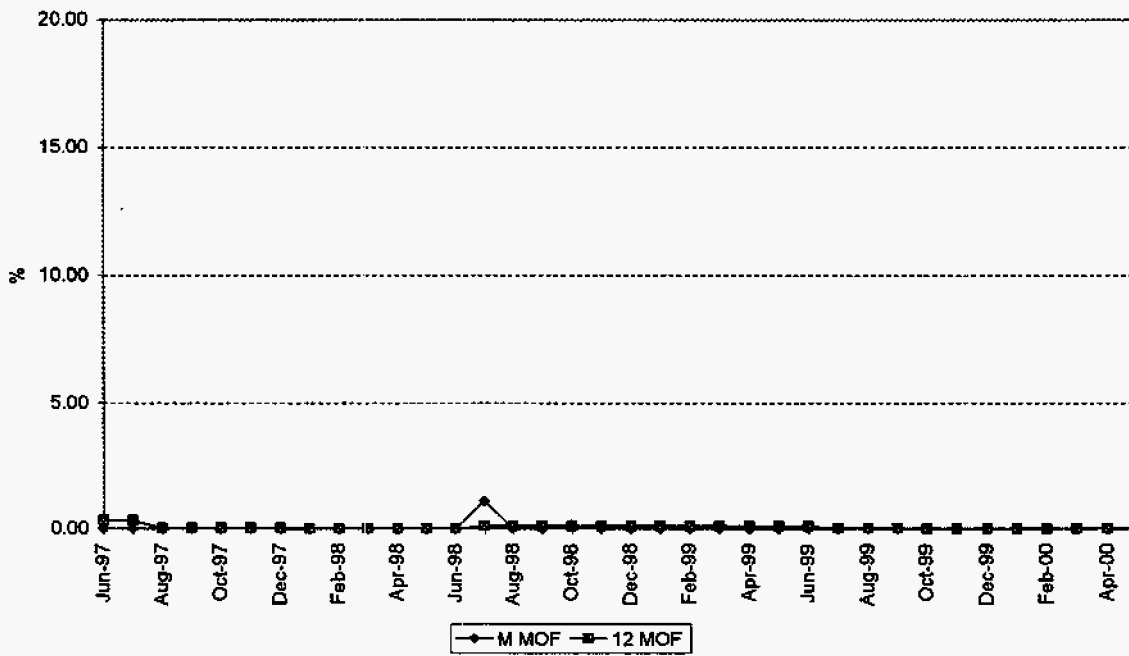
MAINTENANCE OUTAGE FACTOR



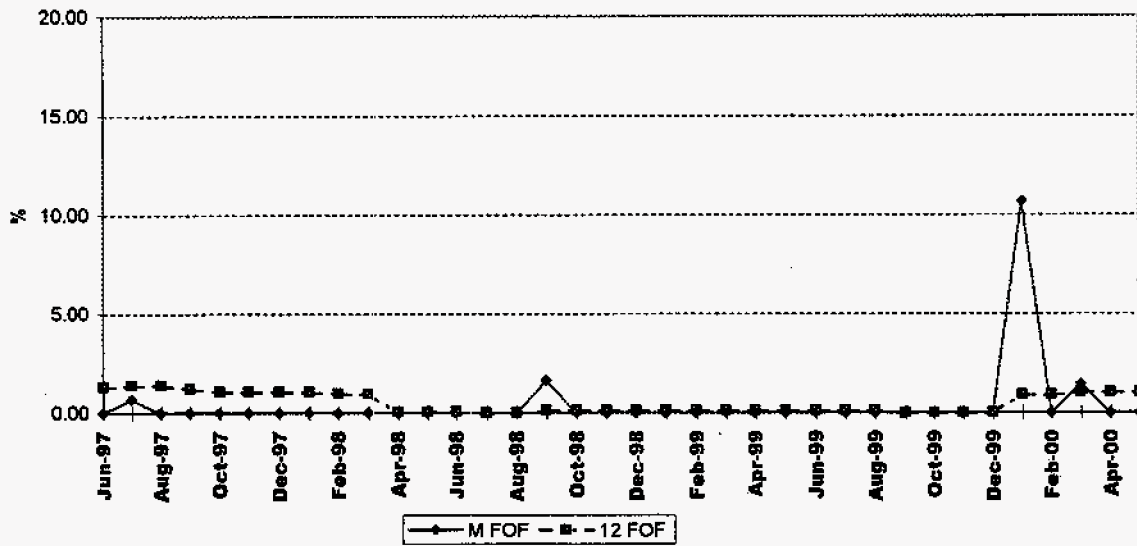
PTN 3 FORCED OUTAGE FACTOR



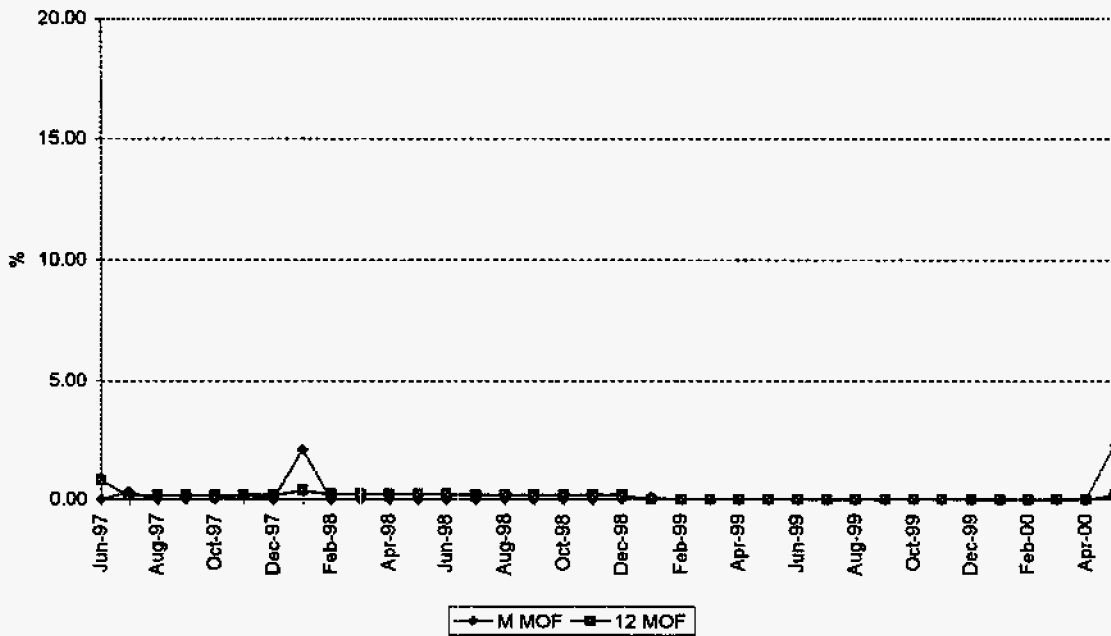
MAINTENANCE OUTAGE FACTOR



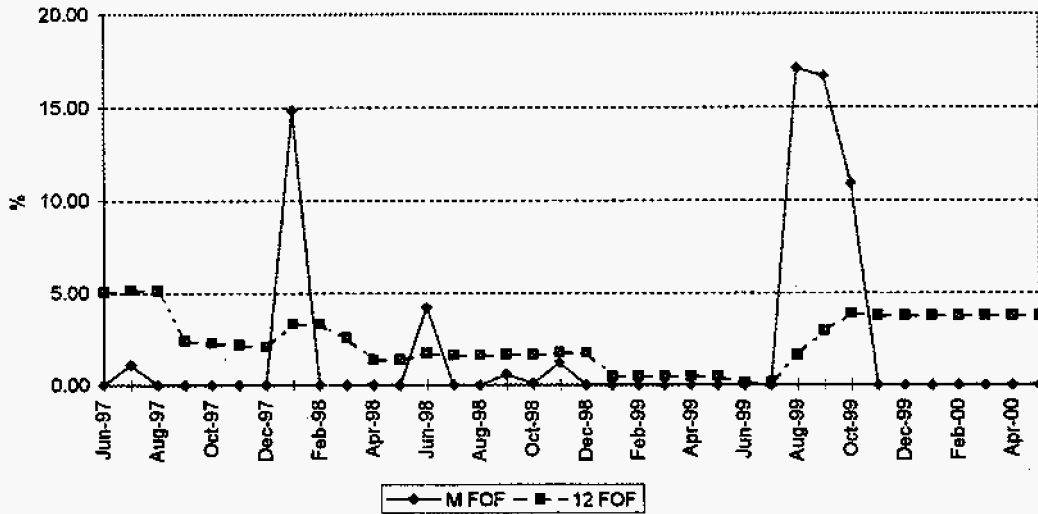
PTN 4 FORCED OUTAGE FACTOR



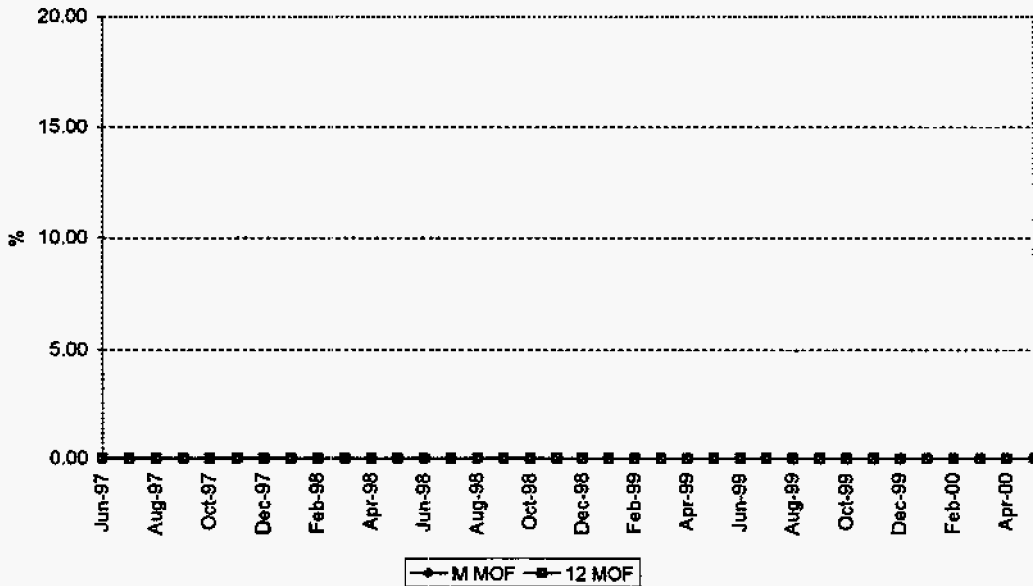
MAINTENANCE OUTAGE FACTOR



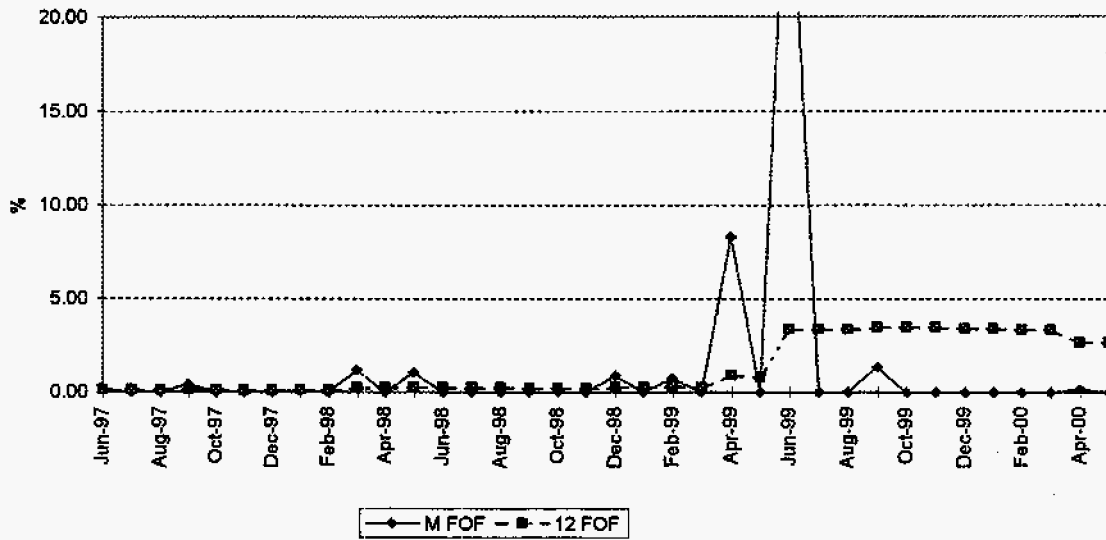
PSL 1 FORCED OUTAGE FACTOR



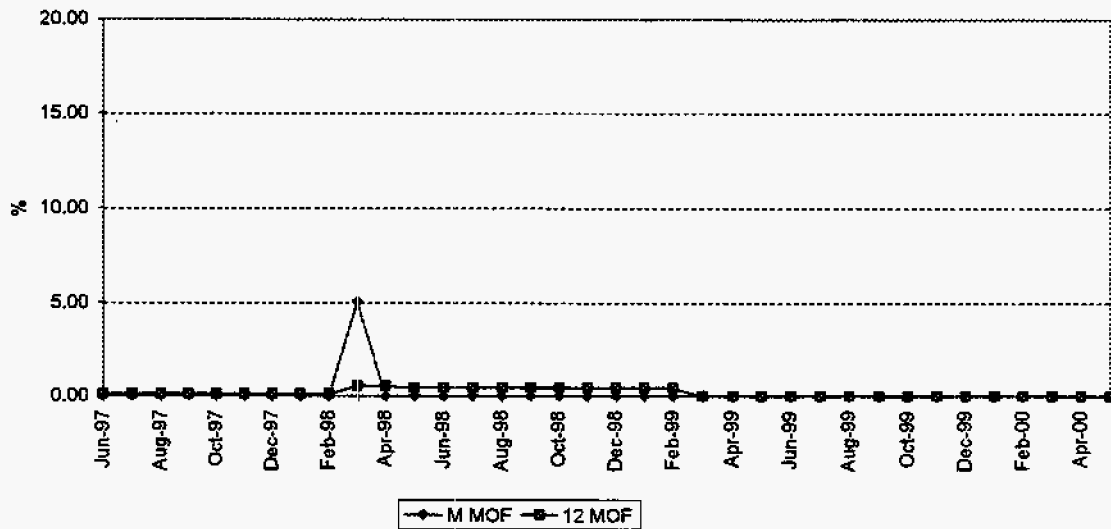
MAINTENANCE OUTAGE FACTOR



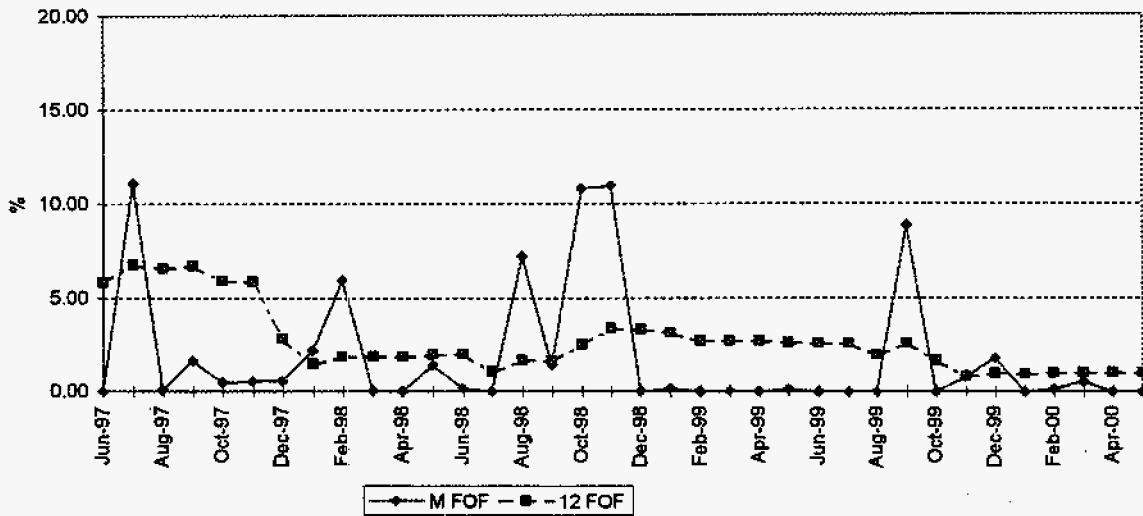
PSL 2 FORCED OUTAGE FACTOR



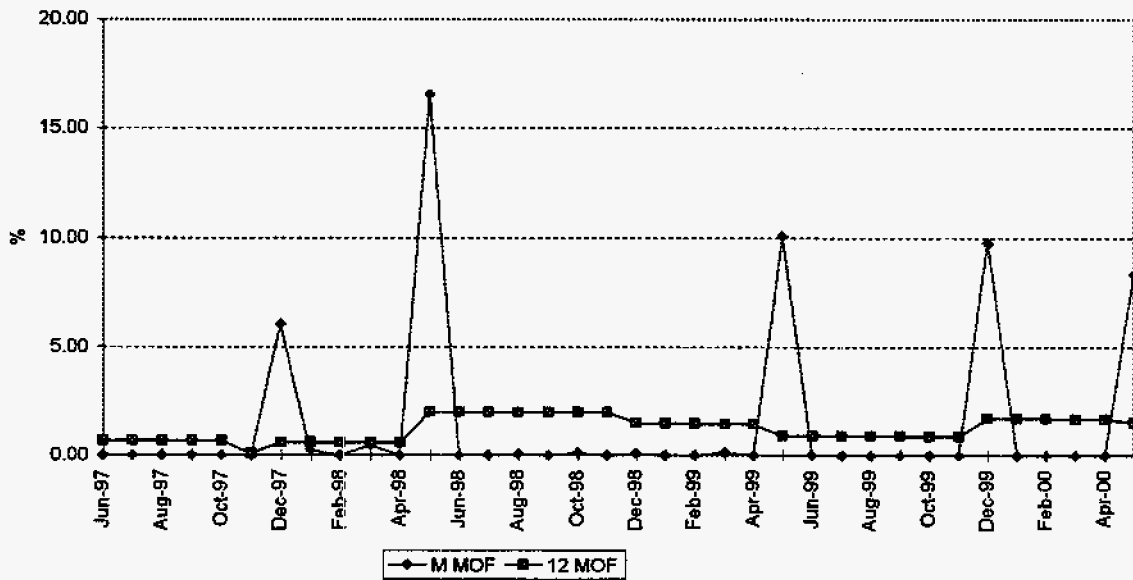
MAINTENANCE OUTAGE FACTOR



PSG 4 FORCED OUTAGE FACTOR



MAINTENANCE OUTAGE FACTOR



PLANNED OUTAGE SCHEDULE (ESTIMATED)

FLORIDA POWER & LIGHT COMPANY

PERIOD OF: JANUARY THROUGH DECEMBER, 2001

| <u>PLANT/UNIT</u> | <u>PLAN OUTAGE</u> | <u>REASON FOR OUTAGE</u> | <u>LR MW</u> |
|-------------------|---------------------|---|--------------|
| Cape Canaveral 1 | 03/10/01 - 04/07/01 | Turbine/boiler overhaul | 396 |
| Cape Canaveral 2 | NONE | | |
| Lauderdale 4 | 03/10/01 - 03/20/01 | Combustion Turbines Overhaul | 438 |
| Lauderdale 5 | 09/29/01 - 10/09/01 | Combustion Turbines Overhaul | 438 |
| Manatee 1 | 10/27/01 - 12/17/01 | Generator Overhaul | 801 |
| Manatee 2 | 03/10/01 - 03/12/01 | Turbine Overhaul | 801 |
| Martin 1 | 03/31/01 - 04/14/01 | Boiler Overhaul | 826 |
| Martin 2 | NONE | | |
| Martin 3 | 09/15/01 - 10/09/01 | Combustion Turbine Overhaul and Steam Turbine inspection | 458 |
| Martin 4 | 03/31/01 - 04/07/01 | CT-B Combustor Overhaul | 229 |
| Port Everglades 3 | 03/31/01 - 05/07/01 | Turbine Overhaul | 391 |
| Port Everglades 4 | NONE | | |
| Turkey Point 1 | NONE | | |
| Turkey Point 3 | 10/01/01 - 10/31/01 | Refueling Overhaul | 703 |
| Turkey Point 4 | NONE | | |
| St.Lucie 1 | 03/26/01 - 04/25/01 | Refueling Overhaul | 845 |
| St.Lucie 2 | 11/19/01 - 12/19/01 | Refueling Overhaul | 719 |
| Scherer 4 | 02/17/01 - 03/19/01 | Boiler/acid Clean-up | 597 |