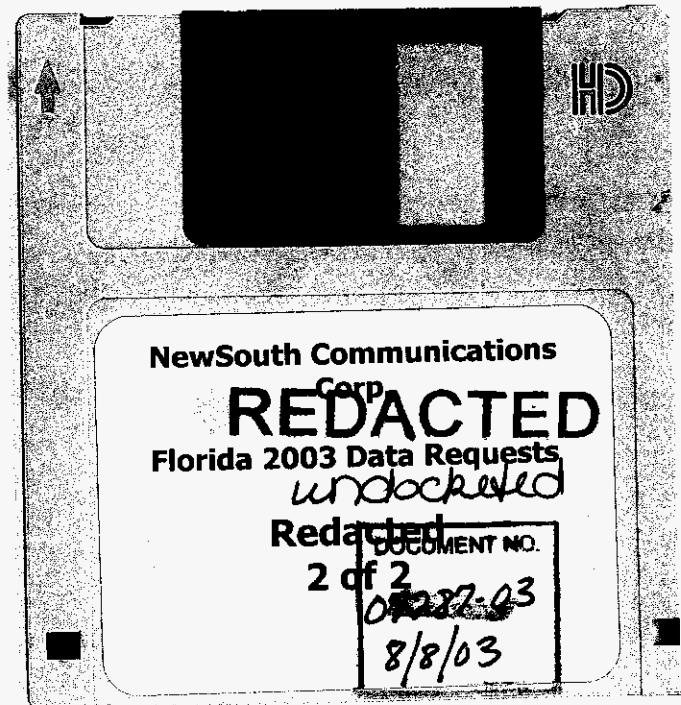
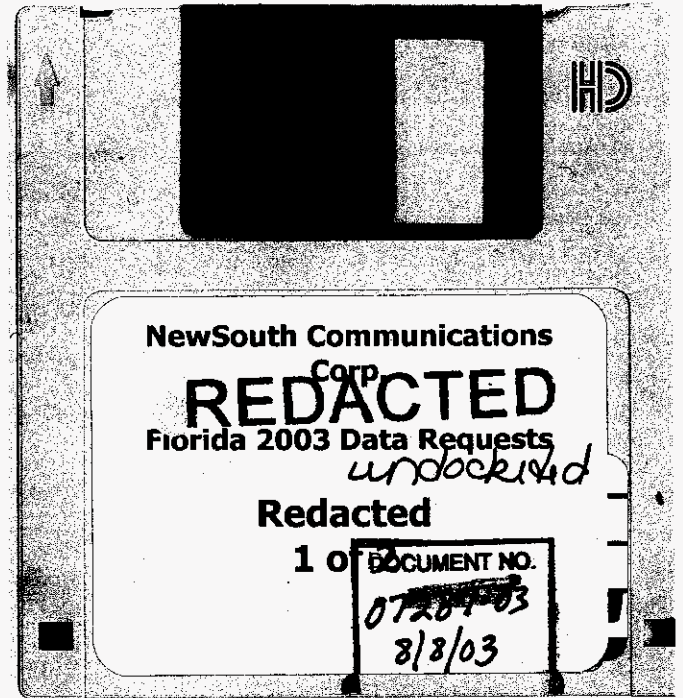


PRINTED FROM 2 DISKETTES

NO HARD COPY FILED



A:\

File Edit View Favorites Tools Help

Back Search Folders

Address A:\ Go

Folders	Name	Size	Type	Date Modified
Desktop	ATTACH...	341...	Microsoft Excel W...	8/7/2003 4:47 PM
My Documents	AZCANN...	49 KB	99I File	4/15/1999 1:45 PM
My Computer	AZI9900...	4 KB	TMS File	4/15/1999 10:42 AM
3½ Floppy (A:)	CAN049...	73 KB	AZI File	4/15/1999 10:33 AM
BIP3499 (C:)	NEWSO...	69 KB	Microsoft Excel W...	8/7/2003 4:46 PM
0ede6d577671d085ccbb87a9				
a mab program files				
ATI				
dell				
Documents and Settings				
\$LoginName\$				
Administrator.NOTDEFINE				
All Users				
Default User				

5 objects 533 KB My Computer

Disquette 1 of 2

07287-03
8/8/03

A:\

File Edit View Favorites Tools Help

Back Search Folders

Address A:\ Go

Name	Size	Type	Date Modified
ATTACH...	341...	Microsoft Excel W...	8/7/2003 4:47 PM
AZCANN...	49 KB	99I File	4/15/1999 1:45 PM
AZI9900...	4 KB	TMS File	4/15/1999 10:42 AM
CAN049...	73 KB	AZI File	4/15/1999 10:33 AM
NEWSO...	69 KB	Microsoft Excel W...	8/7/2003 4:46 PM

341 KB My Computer

FCC Form 477 -- Local Competition and Broadband Reporting

Cover Page - Name & Contact Information

All filers must complete Items 1 - 11 of this Cover Page. File data as of: December 31, 2002

Please review instructions before completing form.

1. Filing status Meet broadband threshold only

2. Company NewSouth Communications Corp.

Reminders:

1) Ensure files are virus free by using up-to-date virus detection software. Filers are encouraged to submit files via e-mail (address: FCC477@fcc.gov).

3. Indicate the category that best describes the operations covered by this filing.

Wireline Local Exchange Carrier

2) If you are filing original or revised data for an earlier semi-annual reporting period, do not use this particular form (which is only for data as of December 31, 2002). See reminder 4.

4. Filers must report separate data for ILEC and non-ILEC operations. Use the following drop-down box to indicate whether this worksheet contains data for ILEC or for non-ILEC operations.

non-ILEC operations

3) You may not insert or delete columns or rows, move cells, or edit text or numbers outside the cells provided for data entries. Files that cannot be opened in EXCEL97, files whose structure has been altered, and files with improper names will have to be refiled.

5. Use the following drop-down box to select your company, parent or controlling entity name. Select "not shown" if it is not in the list. See instructions Section IV-B-1 for information on preparing file names.

NewSouth Holdings

4) If you have questions about the form, contact the Wireline Competition Bureau, Industry Analysis and Technology Division at (202) 418-0940; via e-mail at 477INFO@fcc.gov; or via TTY at (202) 418-0484.

If you selected "not shown" above, then provide the following:

Name of company, parent or controlling entity.

5) You must submit a Certification Statement signed by an officer of your company. A single statement may cover all files submitted. See Instructions sections IV & V.

6. State. Florida

7. Contact person (person who prepared the data contained below).
Keiki Hendrix

6) If you request non-disclosure of some data, you must file a public version of the form with such information redacted. See Instructions sections IV.B and IV.C for information on preparing a redacted file.

8. Contact person telephone number and e-mail address.
phone 864-672-5976

e-mail khendrix@newsouth.com

7) Name your files as specified in Instructions section IV.B.1. To assist you, complete this Cover Page to generate an "example" name, below. Replace the character "#" in this example name with a sequence number as specified in the instructions. This number should be "1" unless using "1" would cause you to submit more than one file with the identical file name.

9. Indicate whether this is an original or revised filing.
Original Filing

10. Indicate whether you request non-disclosure of some or all of the information in this file because you believe that this information is privileged and confidential and public disclosure of such information would likely cause substantial harm to the competitive position of the filer.

Click and select from drop-down list

11. Indicate if this is a complete file or a redacted version of a complete file.

Click and select from drop-down list

Example FLT#D02NewSouth Communications Corp. .XLS

OMB NO: 3060-0816

EXPIRATION DATE: 11/30/2003

NewSouth Communications Corp. non-ILEC operations for Florida December 31, 2002

Complete Part I if you and all affiliates (including commonly controlled entities) provide 250 or more broadband lines or wireless channels in the state over your own facilities or over lines you provisioned as broadband. See instructions for definitions of "own facilities", "broadband", "end user", and "residential and small business".

If you provide data in Part I, you must provide in Part V a list containing the 5-digit Zip Codes of the end-user locations in which you provide the broadband services reported herein. See instructions.

Data as of December 31, 2002

- A. Lines and wireless channels of broadband service that you provided over your own facilities, or over UNE loops or other lines and wireless channels that you obtained from other service providers and equipped as broadband, categorized by technology at the end-user location.
 - I - 1. Asymmetric xDSL.
 - I - 2. Other traditional wireline including symmetric xDSL.
 - I - 3. Coaxial carrier systems including hybrid fiber-coaxial systems.
 - I - 4. Optical carrier (fiber to the end user).
 - I - 5. Satellite.
 - I - 6. Terrestrial wireless fixed.
 - I - 7. Terrestrial wireless mobile.
 - I - 8. All other technologies, such as distribution over electric power lines.

(a) Total one-way and two-way (full) broadband lines and wireless channels	Percentages of lines and wireless channels reported in (a)				
	(b) % of (a) used by residential & small business customers	(c) % of (a) provided over your own facilities	(d) % of (a) provided (i.e. billed directly) to end users	(e) % of (a) providing customers greater than 200 kbps in both directions	(f) % of (a) providing customers greater than 2 mbps in both directions
				100%	

Note: In Part I, report actual counts. Do not report voice-grade equivalent measures.

NewSouth Communications Corp. non-ILEC operations for Florida December 31, 2002

Complete Part II if you and all affiliates (including commonly controlled entities) provide 10,000 or more voice-grade equivalent lines or wireless voice-grade equivalent channels used for local exchange or exchange access service in the state. See instructions for definitions of "voice telephone service", "voice-grade equivalent lines", "residential and small business", "owned facilities", "COLO switching centers", and "end users".

If you provide data in Part II, you must provide in Part V a list containing the 5-digit Zip Codes of the end-user locations in which you provide the wireline or fixed wireless voice grade services reported herein. See instructions.

	(a) Total voice-grade equivalent lines and voice-grade equivalent wireless channels in service	Percentages of lines and wireless channels reported in (a)			
		(b) % of (a) used for residential & small business service	(c) % of (a) provided over your own facilities	(d) % of (a) provided over UNE loops	(e) % of (a) in ILEC COLO switching centers
Data as of December 31, 2002					
A. Voice telephone service provided to end users.					
II - 1. Total lines and channels you provided to end users.	36,168	100%		18%	82%
B. Voice telephone service provided to other communications carriers, categorized by:					
II - 2. Lines and channels that you provided under a Total Service Resale arrangement. See instructions.					
II - 3. Lines and channels you provided under other resale arrangements, such as resold Centrex.					
C. UNE loops, special access lines, and those private lines that connect to carriers, categorized by:					
	(a) Total lines and wireless channels				
II - 4. Lines and channels that you provided under a UNE loop arrangement, where you do not provide switching for the line.					
II - 5. Lines and channels that you provided under a UNE loop arrangement, where you also provided switching for the line.	6,260	100%			
II - 6. Special access lines not provided as broadband and private lines that connect an end-user premises to a telecommunications common carrier and is not provided as broadband.					
D. Total wireline voice-grade equivalent lines & fixed wireless voice-grade equivalent channels in service.					
II - 7. Total lines and channels provided. [line II-1+line II-2 + line II-3]	36,168				100%

Percentage of channels reported in (a), carried over the following types of facilities categorized by the technology used in the part of the line or wireless channel at the end-user location		
(f) Cable coaxial	(g) Wireless	(h) All other including traditional wireline

 NewSouth Communications Corp. non-ILEC operations for Florida December 31, 2002

Complete Part III if you and all affiliates (including commonly controlled entities) serve 10,000 or more mobile voice telephony subscribers in the state over your own facilities. See instructions for definitions of "mobile voice telephony subscribers" and "own facilities".

Data as of December 31, 2002

A. Mobile voice telephony subscribers in service and served over your own facilities.

(a) Network telephone service subscribers	(b) Percentage of (a) provided (i.e. billed directly) to end users
--	--

III - 1. Cellular, PCS & other mobile telephony.

NewSouth Communications Corp. non-ILEC operations for Florida December 31, 2002

Space for comments or explanatory notes.

Part	Line	Comment
—	—	—
—	—	—
—	—	—
—	—	—
—	—	—
—	—	—
—	—	—
—	—	—
—	—	—
—	—	—
—	—	—
—	—	—
—	—	—
—	—	—
—	—	—
—	—	—
—	—	—
—	—	—
—	—	—
—	—	—
—	—	—
—	—	—
—	—	—
—	—	—
—	—	—
—	—	—
—	—	—
—	—	—
—	—	—
—	—	—
—	—	—
—	—	—
—	—	—
—	—	—
—	—	—
—	—	—

NewSouth Communications Corp. non-ILEC operations for Florida December 31, 2002

Filers completing Part I or Part II must supply a list of 5-digit Zip Codes in which the filer has at least one customer.
 Do not provide customer counts by Zip Code.

Data as of December 31, 2002

V - 1. 5-digit Zip Codes in the state in which you provide service to end-user locations:

(a) Broadband service	(b) Wireline & fixed wireless exchange telephone
-----------------------------	---

1	32073	
2	32082	
3	32114	
4	32118	
5	32119	
6	32124	
7	32168	
8	32174	
9	32176	
10	32202	
11	32204	
12	32206	
13	32207	
14	32208	
15	32209	
16	32210	
17	32211	
18	32212	
19	32216	
20	32217	
21	32218	
22	32219	
23	32220	
24	32223	
25	32224	
26	32225	
27	32233	
28	32236	
29	32244	
30	32246	
31	32250	
32	32254	
33	32256	
34	32257	

A:\

File Edit View Favorites Tools Help

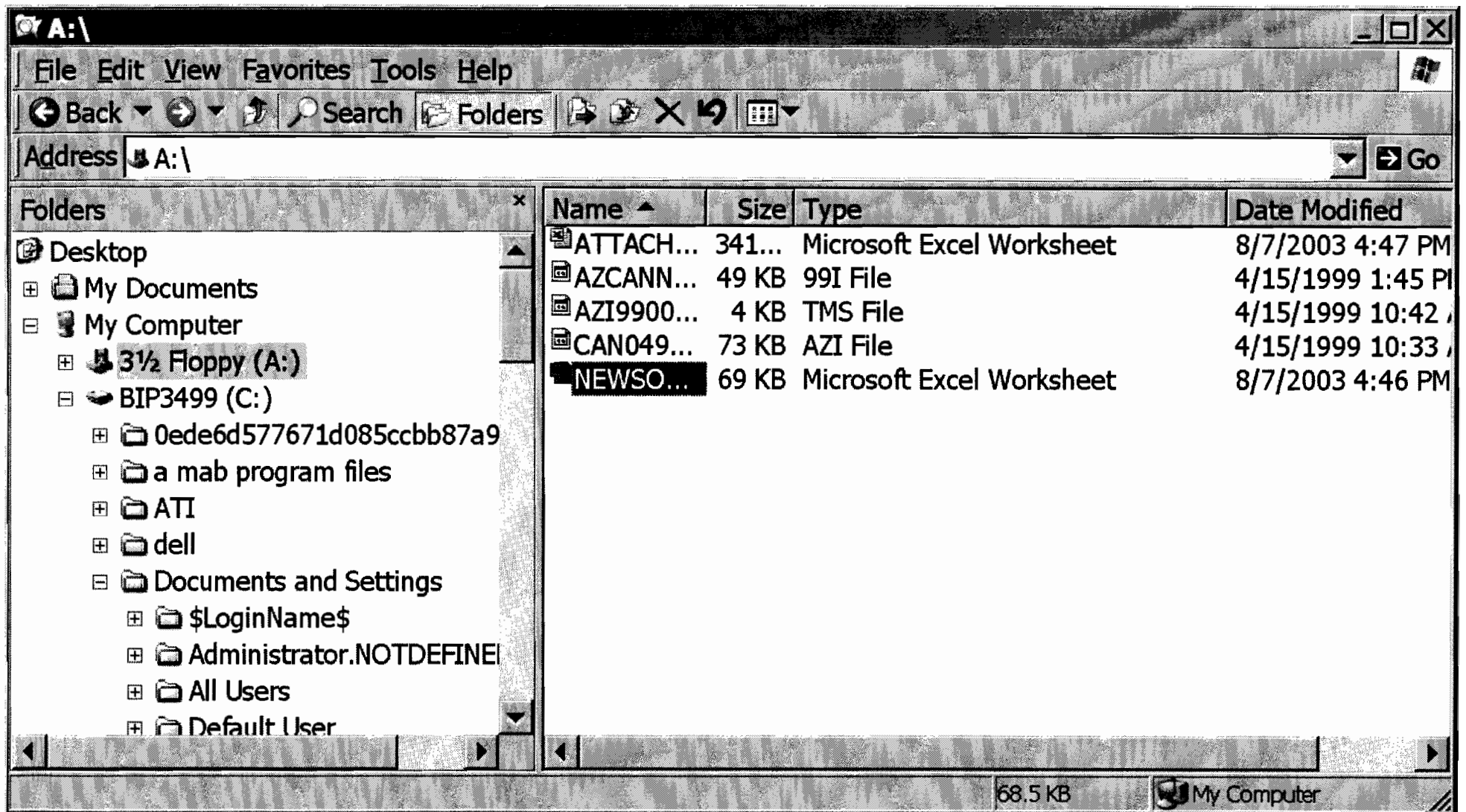
Back Search Folders

Address A:\ Go

Name	Size	Type	Date Modified
ATTACH...	341...	Microsoft Excel W...	8/7/2003 4:47 PM
AZCANN...	49 KB	99I File	4/15/1999 1:45 PM
AZI9900...	4 KB	TMS File	4/15/1999 10:42 AM
CAN049...	73 KB	AZI File	4/15/1999 10:33 AM
NEWSO...	69 KB	Microsoft Excel W...	8/7/2003 4:46 PM

Folders: Desktop, My Documents, My Computer, 3½ Floppy (A:), BIP3499 (C:), 0ede6d577671d085ccbb87a9, a mab program files, ATI, dell, Documents and Settings, \$LoginName\$, Administrator.NOTDEFINE, All Users, Default User

Type: 99I File Date Modified: 4/15/1999 1:45 PM Size: 48.1 KB 48.1 KB My Computer



Competitive Local Exchange Carrier (CLEC) Data Request	
(Due by July 31, 2003)	
Legal company name:	New South Communications Corp.
DPEIA:	NA
Stock Symbol (if publicly traded):	NA
FPSC company code (e.g., TX000):	TX255
Contact name & title:	Keki Hendrix
Telephone num:	864-672-5978
E-mail address:	khendrix@new.south.com
1	Please complete CLEC Table-1, "Access Line Data (VGE basis)." Completed
2	Please complete CLEC Table-2, "Facilities-Based Access Line Counts (not VGEs)." Completed
3	Please complete CLEC Table-3, "Physical/Virtual Collocation Data." Completed
4	Please complete CLEC Table-4, "Switch Data (VGE Basis)." Completed
5	Please indicate the total number of lines on which you or an affiliate are providing broadband service in Florida, indicating the type of broadband service available. REDACTED
6	Are you offering or providing Voice over Internet Protocol (VoIP) services in Florida? If so, please list the respective exchanges, wire centers and price(s). Is the service local, long distance, or both? No
7	Do you actively market your local services to Florida residential customers? No
(a.)	If not, please explain why. New South targets primarily business customers.
(b.)	If so, in what geographic areas? All of Florida
(c.)	If so, what types of marketing do you use? Please check all that are applicable.

Page 1

Competitive Local Exchange Carrier (CLEC) Data Request
(Due by July 31, 2003)

Legal company name: NewSouth Communications Corp.

D/B/A: NA

Stock Symbol (if publicly traded): NA

FPSC company code (e.g., TX000): TX255

Contact name & title: Keiki Hendrix

Telephone number: 864-672-5976

E-mail address: khendrix@newsouth.com

- 1 Please complete CLEC Table-1, "Access Line Data (VGE basis)."
Completed
- 2 Please complete CLEC Table-2, "Facilities-Based Access Line Counts (not VGEs)."
Completed
- 3 Please complete CLEC Table-3, "Physical/Virtual Collocation Data."
Completed
- 4 Please complete CLEC Table-4, "Switch Data (VGE Basis)."
Completed
- 5 Please indicate the total number of lines over which you or an affiliate are providing broadband service in Florida, indicating the type of broadband service available.
REDACTED
- 6 Are you offering or providing Voice over Internet Protocol (VoIP) services in Florida? If so, please list the respective exchanges, wire centers and price(s). Is the service local, long distance, or both?
No
- 7 Do you actively market your local services to Florida residential customers?
No
 - (a.) If not, please explain why.
NewSouth targets primarily business customers.
 - (b.) If so, in what geographic areas ?
All of Florida
 - (c.) If so, what types of marketing do you use? Please check all that are applicable.

No	Newspaper
No	Radio
No	TV
No	Direct Mail
No	Telemarketing
No	Email
Yes	Website

	(d.) If available, please provide marketing brochures or comparable materials. Please see our website at www.newsouth.com
8	Please describe your long-term (5 years) business strategy, including whether you intend to change your method of provisioning (e.g., from resale/mixed to all UNEs to facilities-based). <i>NewSouth Communications has a fully deployed facilities-based network including Lucent 5ESS switches, Siemens switches, and Cisco switches. We further have over 90 collocations deployed across our nine-state footprint, and are currently in the initial phases of deploying microswitching. We have no immediate major changes to our provisioning methods, and continue to focus on growing our account base of business customers.</i>
9	During the last 12 months have you expanded your service offerings in Florida? If so, please list the new offerings, if they are residence or business (or both), their prices and the exchanges where you have offered the services. No
10	Please list your primary line of business (for example, entertainment, cable television, private line/special access service, interexchange service, local service, cellular service, paging service, electric service, municipality, etc.) Local and Long Distance Service to commercial customers
11	If your company provides pre-paid local telephone service, please indicate whether this is the only service you currently provide in Florida. Also, provide an estimate as to the number of access lines served which constitute pre-paid local service. <i>NewSouth Communications does not provide prepaid local telephone service</i>
12	Please provide information on any package plans offered and include: (a.) Which services are offered (e.g., cable television, local telephone service, long distance, broadband service) <i>Local, Long Distance, Internet, Firewall, Email, Web Hosting and Frame Relay</i> (b.) Where such packages are being offered (exchanges or cities) <i>Jacksonville, Orlando, Winter Haven and Tampa</i> (c.) Whether they are provided through your company itself, an affiliate, or a business partner <i>Combination of direct sales team and dealer channel</i> (d.) Examples of plan pricing or price ranges <i>Depends on the number of services and contract term ... normally around \$850.00 / month</i> (e.) Terms and conditions (for example, is subscribing to both local telephone and long distance a condition of providing service?) <i>Customers need to have local service to be eligible for Long Distance</i>
13	Have you experienced any significant barriers in entering Florida's local exchange markets? Please list and describe any major obstacles or barriers encountered that you believe may be impeding the growth of local competition in the state, along with any suggestions as to how to remove such obstacles. Verizon and Sprint ILECs are unresponsive to interconnection issues including but not limited to the customer affecting areas: LNP, UNE, Loop Installations, and UNE Loop Repair.
14	Have you experienced any difficulties involving any agreements you may have with incumbent LECs? If so, please describe any significant problems encountered. <i>Verizon and Sprint disregard aspects of the interconnection agreement involving Maintenance and Repair. In addition, concerns would also include timeliness of EEL Conversions as well as cross connect charges vs. local loop charges, local usage, and traffic of ISP.</i>
15	Please provide any additional comments or information you believe will assist staff in evaluating and reporting on the development of local exchange competition in Florida. This information may include comments on alternative methods to evaluate the level of competition in Florida (e.g., use of the E911 databases, etc.) as well as comments or information on intermodal local competition (e.g., wireless, cable telephony). <i>Verizons inability to provide accurate facility availability information to its centers. Sprints charging of conditioning on DS1 Loops.</i>

16	For the year ending December 31, 2002, please identify your total revenue from local service, broken out by business and residence.	\$19,000,000.00	Business	No residential service revenue
17	As of December 31, 2002, how much money (in thousands of dollars) have you invested in your network serving Florida customers?	REDACTED		
18	Has your company filed either Chapter 7 or Chapter 11 bankruptcy in the past? Are you currently operating under Chapter 7 or Chapter 11 protection? If so, please provide relevant dates and details about the filing, including which chapter.			
	No			
19	If your company filed a Form 477 with the Federal Communications Commission in March 2003, please enclose a copy of the completed form with your response to this data request. (NOTE: This form only applies to CLECs with a minimum of 10,000 access lines.)			
	Please see Attachment A			
20	If your company is publicly traded, please provide a copy of your (or your parent company=s) most recent annual report to stockholders, and Form 10-K.			
	NewSouth Communications is not publicly traded.			
	Authorized Signature			Date

calls on the public switched telephone network (PSTN). The access line counts in Table-1 above must be based on all of your different types of access lines such as copper, fiber, hybrid fiber/copper,

and loops obtained from non-CLECs. MUST NOT INCLUDE ANY EEI LINES. Specialty, e.g., Special Access Local (SAL)

	Exchange	Wire Center	Zone	and loops obtained from non-CLECs			MUST NOT INCLUDE ANY EEI LINES			Specialty, e.g., Special Access Local (SAL)						
				Res.	Bus.	Total	Res.	Bus.	Total	Res.	Bus.	Total				
19																
20																
21																
22																
23																
24																
25																
26																
27																
28																
29																
30																
31																
32																
33																
34																
35																
36																
37																
38																
39																
40																
41																
42																
43																
44																
45																
46																
47																
48																
49																
50																
51																
52																
53																
54																
55																
56																
57																
58																
59																
60																
61																
62																
63																
64																
65																
66																
67																

Page 1

REDACTED

REDACTED

INSTRUCTIONS FOR COMPLETING TABLE-1

1. An access line connects the end-user's customer premises equipment (CPE) to the serving switch (in this case, the CLEC's switch) and allows the end-user to originate and/or terminate local telephone calls on the public switched telephone network (PSTN). The access line counts in Table-1 above must be based on all of your different types of access lines such as copper, fiber, hybrid fiber/copper,

FLORIDA PUBLIC SERVICE COMMISSION

2003 CLEC Data Request

(Data as of June 30, 2003)

Company Name: **NewSouth Communications Corp**

50

6

CLEC Table-1: ACCESS LINE DATA (VGE Basis)

10

Exchange	Wire Center	Zone	Facilities-Based, i.e., including Self-Supplied and loops obtained from non-ILECs.			UNE-L MUST NOT INCLUDE ANY EEL LOOPS			EEL Loops			Other Loops Specify, e.g., Special Access Local (SPAL)			Total
			Res.	Bus.	Total	Res.	Bus.	Total	Res.	Bus.	Total	Res.	Bus.	Total	

REDACTED

REDACTED

INSTRUCTIONS FOR COMPLETING TABLE-1:

1. An access line connects the end-user's customer premises equipment (CPE) to the serving switch (in this case, the CLEC's switch) and allows the end-user to originate and/or terminate local telephone calls on the public switched telephone network (PSTN). The access line counts in Table-1 above must be based on all of your different types of access lines such as copper, fiber, hybrid fiber/copper, coaxial cable, hybrid fiber/coaxial cable, fixed-wireless (free-space optics, microwave or satellite, etc.)

2. Access line data must be calculated as voice-grade equivalents (VGEs). A VGE is defined as a line or channel (wireline or wireless) that connects the end-user's CPE to the serving switch (in this case, the CLEC's switch) and allows the end-user to originate and/or terminate local telephone calls on the PSTN.

DO NOT INCLUDE LINES OR CHANNELS THAT DO NOT HAVE SWITCH PORT ASSIGNMENTS SUCH AS PRIVATE LINES.

EXAMPLE: An EEL consisting of a DS1 Loop and DS1 Transport can support 24 voice-grade channels, i.e., 24 DS0s. However, if only 20 of the 24 DS0s have switch port assignments, then 20 would be entered into Table-1 above as the VGE for this example.

3. Exclude enhanced extended link (EEL) loops in UNE-L columns as the res/bus EEL loop counts must be entered into their respective columns.

4. Exchanges should be listed in alphabetical order.

5. Residential and business access line counts may be obtained by querying your billing database, provisioning database, the NANPA's website, etc. It is easy to use the data at the NANPA's website, go to <http://www.nanpa.com> then click on "CentralOffice Codes (Prefixes)", "Download Assignment Records", scroll down to "CO Code (Prefix) Status-Excel Spreadsheet Files," click on and open file "EstCodes.zip", click on "FL" tab, click on edit, find, and then enter each NPA-NXX to identify the exchange ("Rate Center") and serving wire center ("Switch").

6. "Zone" must be identified as Zone 1, 2, 3, or 4, as used for UNE rates.

7. Enter column totals without duplication.

8. Each field must be populated.

75%
Reply with Changes... End Review...
Arial 8
Go to Office Live Open Save

	A	B	C	D	E	F	G	H	I	J	K	L	M	N	O	P	Q	R	S	T	U	V	W	X	Y	Z
20																										
21																										
22																										
23																										
24																										
25																										
26																										
27																										
28																										
29																										
30																										
31																										
32																										
33																										
34																										
35																										
36																										
37																										
38																										
39																										
40																										
41																										
42																										
43																										
44																										
45																										
46																										
47																										
48																										
49																										
50																										
51																										
52																										
53																										
54																										
55																										
56																										
57																										

Exchange	Wire Center	Physical Collocations In-Service	Virtual Collocations In-Service
REDACTED			
REDACTED			

FLORIDA PUBLIC SERVICE COMMISSION

2003 CLEC Data Request

(Data as of June 30, 2003)

Company Name:

NewSouth Communications Corp.

CLEC Table-3: PHYSICAL/VIRTUAL COLLOCATION DATA

Exchange

Wire Center

Physical Collocations In-Service

Virtual Collocations In-Service

REDACTED

REDACTED

Exchange	Wire Center	Physical Collocations In-Service	Virtual Collocations In-Service
NOTES/INSTRUCTIONS FOR COMPLETING TABLE-3:			
1. Exchanges should be listed in alphabetical order.			
2. Enter number of physical collocations in-service, i.e., include only those collocation arrangements with cross-connect terminations supporting installed equipment AND actually being used to provide local exchange telecommunications service to end-user customers.			
3. Enter number of virtual collocations in-service, i.e., include only those collocation arrangements with cross-connect terminations supporting installed equipment AND actually being used to provide local exchange telecommunications service to end-user customers.			
4. Enter column totals without duplication.			
5. Each field must be populated.			



Reply with Changes... End Review...

Arial 12

Go to Office Live Open Save

D18 REDACTED

FLORIDA PUBLIC SERVICE COMMISSION

2003 CLEC Data Request
(Data as of June 30, 2003)

Company Name: NewSouth Communications

CLEC Table-4: SWITCH DATA (VGE Basis)

Exchange	Wire Center	CLEC Switch Location	CLEC Access Lines			Actual Qty-Type-Manuf.	Proposed Qty-Type-Manuf.	Proposed Installation Date
			Res.	Bus.	Total			
REDACTED								

NOTES/INSTRUCTIONS FOR COMPLETING TABLE-4:

1. An access line connects the end-user's customer premises equipment (CPE) to the serving switch (in this case, the CLEC's switch) and allows the end-user to originate and/or terminate local telephone calls on the public switched telephone network (PSTN). The access line counts in Table-4 above must be based on all of your different types of access lines such as copper, fiber, hybrid fiber/coaxial, coaxial cable, hybrid fiber/coaxial cable, fixed-wireless (free-space optics, microwave or satellite, etc.)
2. Access line data must be calculated as voice-grade equivalents (VGEs). A VGE is defined as a line or channel (wireline or wireless) that connects the end-user's CPE to the serving switch (in this case, the CLEC's switch) and allows the end-user to originate and/or terminate local telephone calls on the PSTN.
3. Exchanges should be listed in alphabetical order.
4. Residential and business access line counts may be obtained by querying your billing database, provisioning database, the NANPA's website, etc. It is easy to use the data at the NANPA's website, go to <http://www.nanpa.com>, then click on "Central Office Codes (Prefixes)", "Download Assignment Records", scroll down to "CO Code (Prefix) Status-Exoel Spreadsheet Files," click on and open file "ExtCodes.zip", click on "FL" tab, click on edit, find, and then enter each NPA-NXX to identify the exchange ("Rate Center") and serving wire center ("Switch").
5. Enter location (street address, city, state, and zip code) of your switch that is actually being used to provide local exchange telecommunications service.
6. Enter quantity, type (circuit or packet), and manufacturer of your switch that is actually being used to provide local exchange telecommunications service.
7. Enter quantity, type (circuit or packet), and manufacturer of proposed switch to be used to provide local exchange telecommunications service.
8. Enter proposed installation date (mm/yy) of proposed switch to be used to provide local exchange telecommunications service.

CLEC Data Request 1 / CLEC Data Request 2 / CLEC Data Request 3 / CLEC Data Request 4



Ready

NUM

FLORIDA PUBLIC SERVICE COMMISSION

2003 CLEC Data Request

(Data as of June 30, 2003)

Company Name: **NewSouth Communications**

CLEC Table-4: SWITCH DATA (VGE Basis)

Exchange	Wire Center	CLEC Switch Location	CLEC Access Lines			Actual Qty-Type-Manuf.	Proposed Qty-Type-Manuf.	Proposed Installation Date
			Res.	Bus.	Total			
REDACTED								

NOTES/INSTRUCTIONS FOR COMPLETING TABLE-4:

1. An access line connects the end-user's customer premises equipment (CPE) to the serving switch (in this case, the CLEC's switch) and allows the end-user to originate and/or terminate local tele calls on the public switched telephone network (PSTN). The access line counts in Table-4 above must be based on all of your different types of access lines such as copper, fiber, hybrid fiber/copper, coaxial cable, hybrid fiber/coaxial cable, fixed-wireless (free-space optics, microwave or satellite, etc.)

2. Access line data must be calculated as voice-grade equivalents (VGEs). A VGE is defined as a line or channel (wireline or wireless) that connects the end-user's CPE to the serving switch (in this CLEC's switch) and allows the end-user to originate and/or terminate local telephone calls on the PSTN.

*****DO NOT INCLUDE LINES OR CHANNELS THAT DO NOT HAVE SWITCH PORT ASSIGNMENTS SUCH AS PRIVATE LINES.*****

EXAMPLE: A channelized DS1 can support 24 voice-grade channels, i.e., 24 DS0s. However, if only 20 of the 24 DS0s have switch port assignments, then 20 would be entered into Table-4 above as the VGE for this DS1 example.

3. Exchanges should be listed in alphabetical order.

4. Residential and business access line counts may be obtained by querying your billing database, provisioning database, the NANPA's website, etc. It is easy to use the data at the NANPA's website, go to <http://www.nanpa.com> then click on "CentralOffice Codes (Prefixes)", "Download Assignment Records", scroll down to "CO Code (Prefix) Status-Excel Spreadsheet Files," click on and open file "EstCodes.zip", click on "FL" tab, click on edit, find, and then enter each NPA-NXX to identify the exchange ("Rate Center") and serving wire center ("Switch").

5. Enter location (street address, city, state, and zip code) of your switch that is actually being used to provide local exchange telecommunications service.

6. Enter quantity, type (circuit or packet), and manufacturer of your switch that is actually being used to provide local exchange telecommunications service.

7. Enter quantity, type (circuit or packet), and manufacturer of proposed switch to be used to provide local exchange telecommunications service.

8. Enter proposed installation date (mm/yy) of proposed switch to be used to provide local exchange telecommunications service.

9. Enter column totals without duplication.

A:\

File Edit View Favorites Tools Help

Back Search Folders

Address A:\

Name	Size	Type	Date Modified
Florida A...	88 KB	Microsoft Excel Worksheet	8/7/2003 2:41 PM
NEWSO...	69 KB	Microsoft Excel Worksheet	8/7/2003 4:38 PM

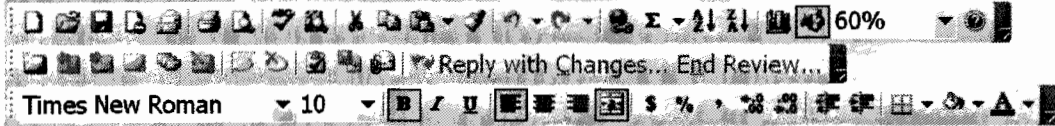
Folders

- Desktop
- My Documents
- My Computer
 - 3 1/2 Floppy (A:)
 - BIP3499 (C:)
 - DVD-RAM Drive (D:)
 - BIP3499E (E:)
 - Mboatwri on 'fp2\home\$' (G:)
 - Wp on 'Fp1\Data\Psc\Clk' (I:)
 - filings on 'fp3' (L:)
 - Hg on 'Fp1\Data\Psc\Clk' (N:)
 - Db on 'Fp1\Data\Psc\Clk' (Q:)
 - 123 on 'Fp1\Data\Psc\Clk' (R:)
 - Data on 'Fp1' (S:)
 - transfer on 'fp1\data\Public' (T:)
 - Fp26dos on 'fp1\Data\Apps' (X:)
 - Bat on 'fp1\data\Public' (Y:)
 - Public on 'fp1\Data' (Z:)
 - Control Panel
- My Network Places
- Recycle Bin
- blank

Type: Microsoft Excel Worksheet Author: Tina Lewis Date Modified: 8/7/2003 2:41 PM Size: 88.0 KB

88.0 KB My Computer

Diskette 2 of 2



Go to Office Live | Open | Save

B97 No

78	Verizon and Sprint ILECs are unresponsive to interconnection issues including but not limited to the customer affecting areas: LNP, UNE, Loop installations, and UNE Loop Repair.	
79		
80	14	Have you experienced any difficulties involving any agreements you may have with incumbent LECs? If so, please describe any significant problems encountered.
81		Verizon and Sprint disregard aspects of the interconnection agreement involving Maintenance and Repair. In addition, concerns would also include timeliness of EEL Conversions as well as cross connect charges vs. local loop charges, local usage, and traffic of ISP.
82		
83		
84	15	Please provide any additional comments or information you believe will assist staff in evaluating and reporting on the development of local exchange competition in Florida. This information may include comments on alternative methods to evaluate the level of competition in Florida (e.g., use of the E911 databases, etc.) as well as comments or information on intermodal local competition (e.g., wireless, cable telephony).
85		Verizons inability to provide accurate facility availability information to its centers. Sprints charging of conditioning on DS1 Loops.
86		
87		Page 2 of 3
88		
89	16	For the year ending December 31, 2002, please identify your total revenue from local service, broken out by business and residence. \$19,000,000.00 Business No residential service revenue
90		
91		
92		
93	17	As of December 31, 2002, how much money (in thousands of dollars) have you invested in your network serving Florida customers? \$36,400,000.00
94		
95		
96	18	Has your company filed either Chapter 7 or Chapter 11 bankruptcy in the past? Are you currently operating under Chapter 7 or Chapter 11 protection? If so, please provide relevant dates and details about the filing, including which chapter. No
97		
98		
99	19	If your company filed a Form 477 with the Federal Communications Commission in March 2003, please enclose a copy of the completed form with your response to this data request. (NOTE: This form only applies to CLECs with a minimum of 1000 employees.) Please see Attachment A
100		Page 3
101		
102	20	If your company is publicly traded, please provide a copy of your (or your parent company=s) most recent annual report to stockholders, and Form 10-K. NewSouth Communications is not publicly traded.
103		
104		

CLEC Data Request / CLEC Data Request 1 / CLEC Data Request 2 / CLEC Data Request 3 / C



Competitive Local Exchange Carrier (CLEC) Data Request
(Due by July 31, 2003)

Legal company name:	NewSouth Communications Corp.
D/B/A:	NA
Stock Symbol (if publicly traded):	NA
FPSC company code (e.g., TX000):	TX255
Contact name & title:	Keiki Hendrix
Telephone number:	864-672-5976
E-mail address:	khendrix@newsouth.com
1	Please complete CLEC Table-1, "Access Line Data (VGE basis)." Completed
2	Please complete CLEC Table-2, "Facilities-Based Access Line Counts (not VGEs)." Completed
3	Please complete CLEC Table-3, "Physical/Virtual Collocation Data." Completed
4	Please complete CLEC Table-4, "Switch Data (VGE Basis)." Completed
5	Please indicate the total number of lines over which you or an affiliate are providing broadband service in Florida, indicating the type of broadband service available. 38433
6	Are you offering or providing Voice over Internet Protocol (VoIP) services in Florida? If so, please list the respective exchanges, wire centers and price(s). Is the service local, long distance, or both? No
7	Do you actively market your local services to Florida residential customers? No
(a.)	If not, please explain why. NewSouth targets primarily business customers.
(b.)	If so, in what geographic areas ? All of Florida
(c.)	If so, what types of marketing do you use? Please check all that are applicable. No Newspaper No Radio No TV No Direct Mail No Telemarketing No Email Yes, See Attached Website

	(d.) If available, please provide marketing brochures or comparable materials. Please see our website at www.newsouth.com
8	Please describe your long-term (5 years) business strategy, including whether you intend to change your method of provisioning (e.g., from resale/mixed to all UNEs to facilities-based). <i>NewSouth Communications has a fully deployed facilities-based network including Lucent 5E55 switches, Seimens switches, and Cisco switches. We further have over 90 collocations deployed across our nine-state footprint, and are currently in the initial phases of deploying microswitching. We have no immediate major changes to our provisioning methods, and continue to focus on growing our account base of business customers.</i>
9	During the last 12 months have you expanded your service offerings in Florida? If so, please list the new offerings, if they are residence or business (or both), their prices and the exchanges where you have offered the services. No
10	Please list your primary line of business (for example, entertainment, cable television, private line/special access service, interexchange service, local service, cellular service, paging service, electric service, municipality, etc.) Local and Long Distance Service to commercial customers
11	If your company provides pre-paid local telephone service, please indicate whether this is the only service you currently provide in Florida. Also, provide an estimate as to the number of access lines served which constitute pre-paid local service. NewSouth Communications does not provide prepaid local telephone service
12	Please provide information on any package plans offered and include: (a.) Which services are offered (e.g., cable television, local telephone service, long distance, broadband service) Local, Long Distance, Internet, Firewall, Email, Web Hosting and Frame Relay (b.) Where such packages are being offered (exchanges or cities) Jacksonville, Orlando, Winter Haven and Tampa (c.) Whether they are provided through your company itself, an affiliate, or a business partner Combination of direct sales team and dealer channel (d.) Examples of plan pricing or price ranges Depends on the number of services and contract term ... normally around \$850.00 / month (e.) Terms and conditions (for example, is subscribing to both local telephone and long distance a condition of providing service?) Customers need to have local service to be eligible for Long Distance
13	Have you experienced any significant barriers in entering Florida's local exchange markets? Please list and describe any major obstacles or barriers encountered that you believe may be impeding the growth of local competition in the state, along with any suggestions as to how to remove such obstacles. Verizon and Sprint ILECs are unresponsive to interconnection issues including but not limited to the customer affecting areas: LNP, UNE, Loop Installations, and UNE Loop Repair.
14	Have you experienced any difficulties involving any agreements you may have with incumbent LECs? If so, please describe any significant problems encountered. Verizon and Sprint disregard aspects of the interconnection agreement involving Maintenance and Repair. In addition, concerns would also include timeliness of EEL Conversions as well as cross connect charges vs. local loop charges, local usage, and traffic of ISP.
15	Please provide any additional comments or information you believe will assist staff in evaluating and reporting on the development of local exchange competition in Florida. This information may include comments on alternative methods to evaluate the level of competition in Florida (e.g., use of the E911 databases, etc.) as well as comments or information on intermodal local competition (e.g., wireless, cable telephony). Verizons inability to provide accurate facility availability information to its centers. Sprints charging of conditioning on DS1 Loops.

16	<p>For the year ending December 31, 2002, please identify your total revenue from local service, broken out by business and residence.</p> <table border="0" style="width: 100%;"> <tr> <td style="text-align: right;">\$19,000,000.00</td> <td style="text-align: right;">Business</td> </tr> <tr> <td></td> <td style="text-align: right;">No residential service revenue</td> </tr> </table>	\$19,000,000.00	Business		No residential service revenue
\$19,000,000.00	Business				
	No residential service revenue				
17	<p>As of December 31, 2002, how much money (in thousands of dollars) have you invested in your network serving Florida customers?</p> <p style="text-align: center;">\$36,400,000.00</p>				
18	<p>Has your company filed either Chapter 7 or Chapter 11 bankruptcy in the past? Are you currently operating under Chapter 7 or Chapter 11 protection? If so, please provide relevant dates and details about the filing, including which chapter.</p> <p>No</p>				
19	<p>If your company filed a Form 477 with the Federal Communications Commission in March 2003, please enclose a copy of the completed form with your response to this data request. (NOTE: This form only applies to CLECs with a minimum of 10,000 access lines.)</p> <p>Please see Attachment A</p>				
20	<p>If your company is publicly traded, please provide a copy of your (or your parent company=s) most recent annual report to stockholders, and Form 10-K.</p> <p>NewSouth Communications is not publicly traded.</p>				
	<table border="0" style="width: 100%;"> <tr> <td style="width: 60%;">Authorized Signature</td> <td style="width: 40%;">Date</td> </tr> </table>	Authorized Signature	Date		
Authorized Signature	Date				

	A	B	C	D	E	F	G	H	I	J	K	L	M	N	O	P
50	Panama City	PNCYFLA	2	0	0	0	0	360	360	0	396	396	0	24	24	780
51	Pensacola	PNSOFLA	2	0	0	0	0	0	0	0	0	0	0	348	348	348
52	Pensacola	PNSOFLA	2	0	0	0	0	0	0	0	0	0	0	180	180	180
53	Pinellas	PINFLA	NA	0	0	0	0	0	0	0	0	0	0	3204	3204	3204
54	Sanford	SNFFFLA	2	0	0	0	0	636	636	0	1176	1176	0	420	420	2232
55	Sarasota	SRSTFLA	NA	0	0	0	0	0	0	0	0	0	0	480	480	480
56	St. Petersburg	SPBGFLA	NA	0	0	0	0	0	0	0	372	372	0	648	648	1020
57	Tallahassee	TLHSFLA	1	0	0	0	0	0	0	0	240	240	0	372	372	588
58	Tampa	TAMPFLA	NA	0	0	0	0	156	156	0	216	216	0	180	180	576
59	Winter Haven	WNHFLA	NA	0	0	0	0	0	0	0	252	252	0	576	576	828
60	Winter Haven	WNHFLA	NA	0	0	0	0	12	12	0	624	624	0	1212	1212	1848
61	Winter Park	WNPFLA	2	0	0	0	0	0	0	0	0	0	0	348	348	348
62	Total			0	0	0	0	5976	5976	0	7860	7860	0	14316	14316	26152

INSTRUCTIONS FOR COMPLETING TABLE-1:

1. An access line connects the end-user's customer premises equipment (CPE) to the serving switch (in this case, the CLEC's switch) and allows the end-user to originate and/or terminate local telephone calls on the public switched telephone network (PSTN). The access line counts in Table-1 above must be based on all of your different types of access lines such as copper, fiber, hybrid fibercoaxial, coaxial cable, hybrid fibercoaxial cable, fixed-wireless (free-space optics, microwave or satellite, etc).

2. Access line data must be calculated as voice-grade equivalents (VGEs). A VGE is defined as a line or channel (wireline or wireless) that connects the end-user's CPE to the serving switch (in this case, the CLEC's switch) and allows the end-user to originate and/or terminate local telephone calls on the PSTN.

DO NOT INCLUDE LINES OR CHANNELS THAT DO NOT HAVE SWITCH PORT ASSIGNMENTS SUCH AS PRIVATE LINES.

EXAMPLE: An EEL consisting of a DS1 Loop and DS1 Transport can support 24 voice-grade channels, i.e., 24 DS0s. However, if only 20 of the 24 DS0s have switch port assignments, then 20 would be entered into Table-1 above as the VGE for this example.

3. Exclude enhanced extended link (EEL) loops in LINE-L columns as the resbus EEL loop counts must be entered in their respective columns.

4. Exchanges should be listed in alphabetical order.

5. Residential and business access line counts may be obtained by querying your billing database, provisioning database, the NANPA's website, etc. It is easy to use the data at the NANPA's website, go to <http://www.nanpa.com> then click on "Central Office Codes (Prefixes)", "Download Assignment Records", scroll down to "CO Code (Prefix) Status-Excel Spreadsheet Files," click on and open file "EstCodes.zip", click on "FL" tab, click on edit, find, and then enter each NPA-NOX to identify the exchange ("Rate Center") and serving wire center ("Switch").

6. "Zone" must be identified as Zone 1, 2, 3, or 4, as used for UNE rates.

7. Enter column totals without duplication.

8. Each field must be populated.

Page 2

FLORIDA PUBLIC SERVICE COMMISSION

2003 CLEC Data Request

(Data as of June 30, 2003)

Company Name: **NewSouth Communications Corp**

50

6

CLEC Table-1: ACCESS LINE DATA (VGE Basis)

10

Exchange	Wire Center	Zone	Facilities-Based, i.e., including Self-Supplied and loops obtained from non-ILECs.			UNE-L MUST NOT INCLUDE ANY EEL LOOPS			EEL Loops			Other Loops Specify, e.g., Special Access Local (SPAL)			Total
			Res.	Bus.	Total	Res.	Bus.	Total	Res.	Bus.	Total	Res.	Bus.	Total	
			Carrollwood	CRWDFLXA	NA	0	0	0	0	0	0	0	0	0	
Chipley	CHPLFLSP		0	0	0	396	396	0	0	0	0	0	204	204	600
Clearwater	CLWRFLXA	NA	0	0	0	0	0	0	0	0	0	0	36	36	36
Countryside	CNSDFLXA	NA	0	0	0	0	0	0	96	96	0	0	744	744	840
Daytona Beach	DYBFLMA		2	0	0	0	324	324	0	228	228	0	84	84	636
Destin	DESTFLST		1	0	0	0	0	0	0	0	0	0	12	12	12
Destin	DESTFLXA		1	0	0	0	1308	1308	0	0	0	0	96	96	1404
Fort Myers	FTMYFLXA		2	0	0	0	0	0	336	336	0	0	636	636	972
Ft. Lauderdale	FTLDFLMR		1	0	0	0	12	12	0	0	0	0	12	12	24
Ft. Lauderdale	FTLDFLTT	NA	0	0	0	0	0	0	0	0	0	0	36	36	36
Ft. Lauderdale	PMBHFLJK		2	0	0	0	0	0	0	0	0	0	204	204	204
Ft. Walton Bch	FTWBFLXA		2	0	0	0	0	0	192	192	0	0	252	252	444
Gainesville	GSVFLMA		2	0	0	0	144	144	0	144	144	0	0	0	288
Jacksonville	JCVLFLCL		1	0	0	0	648	648	0	624	624	0	180	180	1452
Jacksonville	JCVLFLJB	NA	0	0	0	0	0	0	0	0	0	0	180	180	180
Jacksonville	JCVLFLSJ		2	0	0	0	432	432	0	816	816	0	84	84	1332
Jacksonville	JCVLFLSM		1	0	0	0	480	480	0	768	768	0	48	48	1296
Jacksonville Beach	JCBHFLMA		2	0	0	0	0	0	0	0	0	0	336	336	336
Kissimmee	KSSMFLXA		2	0	0	0	192	192	0	432	432	0	24	24	648
Lakeland	LKLDFLXA	NA	0	0	0	0	300	300	0	144	144	0	96	96	540
Mandarin	MNDRFLLO		2	0	0	0	0	0	0	444	444	0	1656	1656	2100
Melbourne	MLBRFLMA		2	0	0	0	0	0	0	0	0	0	936	936	936
Ocala	OCALFLXA		3	0	0	0	0	0	0	0	0	0	12	12	12
Orlando	ORLDFL60	NA	0	0	0	0	0	0	0	0	0	0	12	12	12
Orlando	ORLDFLCD	NA	0	0	0	0	0	0	0	0	0	0	48	48	48
Orlando	ORLDFLMA		1	0	0	0	0	0	0	0	0	0	12	12	12
Orlando	ORLDFLPC		2	0	0	0	516	516	0	360	360	0	72	72	948
Orlando	ORLDFLSO	NA	0	0	0	0	0	0	0	0	0	0	12	12	12
Panama City	PNCYFLJL		3	0	0	0	0	0	0	0	0	0	132	132	132
Panama City	PNCYFLMA		2	0	0	0	360	360	0	396	396	0	24	24	780
Pensacola	PNSCFBL		2	0	0	0	0	0	0	0	0	0	348	348	348
Pensacola	PNSCFLWT		2	0	0	0	0	0	0	0	0	0	180	180	180
Pinellas	PNLSFLXA	NA	0	0	0	0	0	0	0	0	0	0	3204	3204	3204
Sanford	SNFRFLMA		2	0	0	0	696	696	0	1176	1176	0	420	420	2292
Sarasota	SRSTFLXA	NA	0	0	0	0	0	0	0	0	0	0	480	480	480
St. Petersburg	SPBGFLXA	NA	0	0	0	0	0	0	0	372	372	0	648	648	1020
Tallahassee	TLHSFLXA		1	0	0	0	0	0	0	216	216	0	372	372	588
Tampa	TAMPFLXA	NA	0	0	0	0	156	156	0	240	240	0	180	180	576
Winter Haven	WNHNFLBU	NA	0	0	0	0	0	0	0	252	252	0	576	576	828
Winter Haven	WNHNFLXC	NA	0	0	0	0	12	12	0	624	624	0	1212	1212	1848
Winter Park	WNPKFLXE		2	0	0	0	0	0	0	0	0	0	348	348	348
Total:			0	0	0	0	5976	5976	0	7860	7860	0	14316	14316	28152

INSTRUCTIONS FOR COMPLETING TABLE-1:

1. An access line connects the end-user's customer premises equipment (CPE) to the serving switch (in this case, the CLEC's switch) and allows the end-user to originate and/or terminate local telephone calls on the public switched telephone network (PSTN). The access line counts in Table-1 above must be based on all of your different types of access lines such as copper, fiber, hybrid fiber/copper, coaxial cable, hybrid fiber/coaxial cable, fixed-wireless (free-space optics, microwave or satellite, etc.)

2. Access line data must be calculated as voice-grade equivalents (VGEs). A VGE is defined as a line or channel (wireline or wireless) that connects the end-user's CPE to the serving switch (in this case, the CLEC's switch) and allows the end-user to originate and/or terminate local telephone calls on the PSTN.

DO NOT INCLUDE LINES OR CHANNELS THAT DO NOT HAVE SWITCH PORT ASSIGNMENTS SUCH AS PRIVATE LINES.

EXAMPLE: An EEL consisting of a DS1 Loop and DS1 Transport can support 24 voice-grade channels, i.e., 24 DS0s. However, if only 20 of the 24 DS0s have switch port assignments, then 20 would be entered into Table-1 above as the VGE for this example.

3. Exclude enhanced extended link (EEL) loops in UNE-L columns as the res/bus EEL loop counts must be entered into their respective columns.

4. Exchanges should be listed in alphabetical order.

5. Residential and business access line counts may be obtained by querying your billing database, provisioning database, the NANPA's website, etc. It is easy to use the data at the NANPA's website, go to <http://www.nanpa.com> then click on "CentralOffice Codes (Prefixes)", "Download Assignment Records", scroll down to "CO Code (Prefix) Status-Excel Spreadsheet Files," click on and open file "EstCodes.zip", click on "FL" tab, click on edit, find, and then enter each NPA-NXX to identify the exchange ("Rate Center") and serving wire center ("Switch").

6. "Zone" must be identified as Zone 1, 2, 3, or 4, as used for UNE rates.

7. Enter column totals without duplication.

8. Each field must be populated.

1 FLORIDA PUBLIC SERVICE COMMISSION
 2
 3 2003 CLEC Data Request
 4
 5 (Data as of June 30, 2003)
 6
 7 Company Name: NewSouth Communications Corp.
 8
 9
 10 50
 11
 12 CLEC Table-2: FACILITIES-BASED ACCESS LINE COUNTS (not VGEs) 6
 13
 14
 15

Exchange	Wire Center	Zone	Facilities-Based, i.e., including Self-Supplied and loops obtained from non-LECs							Other (Specify Type)
			Analog	DS0	DS1	DS3	OC1	OC3		
Carrollwood	CRWDFLXA	NA	0	0	14	0	0	0		
ChIPLEY	CHPLFLSP	3	0	0	50	0	0	0		
CLEARWATER	CLWRFLXA	NA	0	0	3	0	0	0		
COUNTRYSIDE	CNSDFLXA	NA	0	0	70	0	0	0		
Daytona Beach	DYBFLMA	2	0	0	53	0	0	0		
Destin	DESTFLST	1	0	0	1	0	0	0		
Destin	DESTFLXA	1	0	0	117	0	0	0		
Fort Myers	FTMYFLXA	2	0	0	81	0	0	0		
Ft. Lauderdale	FTLDFLMR	1	0	0	2	0	0	0		
Ft. Lauderdale	FTLDFLT	NA	0	0	3	0	0	0		
Ft. Lauderdale	PMBFLJK	2	0	0	17	0	0	0		
FL Walton Beach	FTWBFLXA	2	0	0	37	0	0	0		
Gainesville	GSVLFLMA	2	0	0	24	0	0	0		
Jacksonville	JCVLFLCL	1	0	0	121	0	0	0		
Jacksonville	JCVLFLJB	NA	0	0	15	0	0	0		
Jacksonville	JCVLFLSJ	2	0	0	111	0	0	0		
Jacksonville	JCVLFLSM	1	0	0	106	0	0	0		
Jacksonville Beach	JCBFLMA	2	0	0	28	0	0	0		
Kissimmee	KSSMFLXA	2	0	0	54	0	0	0		
Lakeland	LKLDFLXA	NA	0	0	45	0	0	0		
Mandarin	MNDRFLLO	2	0	0	175	0	0	0		

FLORIDA PUBLIC SERVICE COMMISSION

2003 CLEC Data Request

(Data as of June 30, 2003)

Company Name: NewSouth Communications Corp.

50

CLEC Table-2: FACILITIES-BASED ACCESS LINE COUNTS (not VGEs) 6

Exchange	Wire Center	Zone	Facilities-Based, i.e., including Self-Supplied and loops obtained from non-ILECs						
			Analog	DS0	DS1	DS3	OC1	OC3	Other (Specify Type)
Carrollwood	CRWDFLXA	NA	0	0	14	0	0	0	
Chipley	CHPLFLSP	3	0	0	50	0	0	0	
Clearwater	CLWRFLXA	NA	0	0	3	0	0	0	
Countryside	CNSDFLXA	NA	0	0	70	0	0	0	
Daytona Beach	DYBHFLMA	2	0	0	53	0	0	0	
Destin	DESTFLST	1	0	0	1	0	0	0	
Destin	DESTFLXA	1	0	0	117	0	0	0	
Fort Myers	FTMYFLXA	2	0	0	81	0	0	0	
Ft. Lauderdale	FTLDFLMR	1	0	0	2	0	0	0	
Ft. Lauderdale	FTLDFLT	NA	0	0	3	0	0	0	
Ft. Lauderdale	PMBHFLJK	2	0	0	17	0	0	0	
Ft. Walton Beach	FTWBFLXA	2	0	0	37	0	0	0	
Gainesville	GSVLFLMA	2	0	0	24	0	0	0	
Jacksonville	JCVLFLCL	1	0	0	121	0	0	0	
Jacksonville	JCVLFLJB	NA	0	0	15	0	0	0	
Jacksonville	JCVLFLSJ	2	0	0	111	0	0	0	
Jacksonville	JCVLFLSM	1	0	0	108	0	0	0	
Jacksonville Beach	JCBHFLMA	2	0	0	28	0	0	0	
Kissimmee	KSSMFLXA	2	0	0	54	0	0	0	

Exchange	Wire Center	Zone	Facilities-Based, i.e., including Self-Supplied and loops obtained from non-ILECs					
Lakeland	LKLDFLXA	NA	0	0	45	0	0	0
Mandarin	MNDRFLO	2	0	0	175	0	0	0
Melbourne	MLBRFLMA	2	0	0	78	0	0	0
Ocala	OCALFLXA	3	0	0	1	0	0	0
Orlando	ORLDFL60	NA	0	0	1	0	0	0
Orlando	ORLDFLCD	NA	0	0	4	0	0	0
Orlando	ORLDFLMA	1	0	0	1	0	0	0
Orlando	ORLDFLPC	2	0	0	79	0	0	0
Orlando	ORLDFLSO	NA	0	0	1	0	0	0
Panama City	PNCYFLJL	3	0	0	11	0	0	0
Panama City	PNCYFLMA	2	0	0	65	0	0	0
Pensacola	PNSCFLBL	2	0	0	29	0	0	0
Pensacola	PNSCFLWT	2	0	0	15	0	0	0
Pinellas	PNLSFLXA	NA	0	0	267	0	0	0
Sanford	SNFRFLMA	2	0	0	191	0	0	0
Sarasota	SRSTFLXA	NA	0	0	40	0	0	0
St. Petersburg	SPBGFLXA	NA	0	0	85	0	0	0
Tallahassee	TLHSFLXA	1	0	0	49	0	0	0
Tampa	TAMPFLXA	NA	0	0	48	0	0	0
Winter Haven	WNHNFLBU	NA	0	0	69	0	0	0
Winter Haven	WNHNFLXC	NA	0	0	154	0	0	0
Winter Park	WNPKFLXE	2	0	0	29	0	0	0
			0	0				
			0	0				
			0	0				
			0	0				
Total:			0	0	2346	0	0	0

INSTRUCTIONS FOR COMPLETING TABLE-2:

1. An access line connects the end-user's customer premises equipment (CPE) to the serving switch (in this case, the CLEC's switch) and allows the end-user to originate and/or terminate calls on the public switched telephone network (PSTN). The access line counts in Table-2 above must be based on all of your different types of access lines such as copper, fiber, hybrid fiber/copper, coaxial cable, hybrid fiber/coaxial cable, fixed-wireless (free-space optics, microwave or satellite, etc.)

2. Data must be actual line counts, NOT VGEs.

EXAMPLE: Enter "1" for 1DS0, "2" for 2 DS1s, "3" for 3 DS3s, etc.

3. "Exchange" names should be listed in alphabetical order.

4. "Zone" must be identified as Zone 1, 2, 3, or 4, as used for UNE rates.

column totals without duplication.

Each field must be populated.

	A	B	C	D	E	F
18	Clearwater	CLWFFLXA	1	0		
19	Clearwater	CNSDFLXA	1	0		
20	Clearwater	PMLSFLXA	1	0		
21	Daytona Beach	DYBFFLMA	1	0		
22	Destin	DESTFLXA	1	0		
23	Fl. Walton Beach	FTWBFLLXA	1	0		
24	Jacksonville	JCVLFLCL	1	0		
25	Jacksonville	JCVLFLSJ	1	0		
26	Jacksonville	JCVLFLSM	1	0		
27	Jacksonville Beach	JCBFFLMA	1	0		
28	Kissimmee	KSSMFLXA	1	0		
29	Lakeland	LKLDFLXA	1	0		
30	Mandarin	MNDFFLLO	1	0		
31	Melbourne	MLBFFLMA	1	0		
32	Orlando	ORLDFLMA	1	0		
33	Orlando	ORLDFLPC	1	0		
34	Pensacola	PNSCFLBL	1	0		
35	Sanford	SNFFFLMA	1	0		
36	Sarasota	SRSTFLXA	1	0		
37	St. Petersburg	SPBGFLXA	1	0		
38	Tampa	TAMPFLXA	1	0		
39	Tampacen	CRWDFLXA	1	0		
40	Winter Haven	WNHFFLXC	1	0		
41	Total:		23	0		

NOTES/INSTRUCTIONS FOR COMPLETING TABLE-3:

- Exchanges should be listed in alphabetical order.
- Enter number of physical collocations in-service, i.e., include only those collocation arrangements with cross-connect terminations supporting installed equipment AND actually being used to provide local exchange telecommunications service to end-user customers.
- Enter number of virtual collocations in-service, i.e., include only those collocation arrangements with cross-connect terminations supporting installed equipment AND actually being used to provide local exchange telecommunications service to end-user customers.
- Enter column totals without duplication.
- Each field must be populated.

FLORIDA PUBLIC SERVICE COMMISSION

2003 CLEC Data Request

(Data as of June 30, 2003)

Company Name:

NewSouth Communications Corp.

CLEC Table-3: PHYSICAL/VIRTUAL COLLOCATION DATA

Exchange	Wire Center	Physical Collocations In-Service	Virtual Collocations In-Service
Clearwater	CLWRFLXA	1	0
Clearwater	CNSDFLXA	1	0
Clearwater	PNLSFLXA	1	0
Daytona Beach	DYBHFLMA	1	0
Destin	DESTFLXA	1	0
Ft. Walton Beach	FTWBFLXA	1	0
Jacksonville	JCVLFLCL	1	0
Jacksonville	JCVLFLSJ	1	0
Jacksonville	JCVLFLSM	1	0
Jacksonville Beach	JCBHFLMA	1	0
Kissimmee	KSSMFLXA	1	0
Lakeland	LKLDFLXA	1	0
Mandarin	MNDRFLLO	1	0
Melbourne	MLBRFLMA	1	0
Orlando	ORLDFLMA	1	0
Orlando	ORLDFLPC	1	0
Pensacola	PNSCFLBL	1	0
Sanford	SNFRFLMA	1	0
Sarasota	SRSTFLXA	1	0
St. Petersburg	SPBGFLXA	1	0

Exchange	Wire Center	Physical Collocations In-Service	Virtual Collocations In-Service
Tampa	TAMPFLXA	1	0
Tampacen	CRWDFLXA	1	0
Winter Haven	WNHNFLXC	1	0
Total:		23	0

NOTES/INSTRUCTIONS FOR COMPLETING TABLE-3:

1. Exchanges should be listed in alphabetical order.
2. Enter number of physical collocations in-service, i.e., include only those collocation arrangements with cross-connect terminations supporting installed equipment AND actually being used to provide local exchange telecommunications service to end-user customers.
3. Enter number of virtual collocations in-service, i.e., include only those collocation arrangements with cross-connect terminations supporting installed equipment AND actually being used to provide local exchange telecommunications service to end-user customers.
4. Enter column totals without duplication.
5. Each field must be populated.

FLORIDA PUBLIC SERVICE COMMISSION

2003 CLEC Data Request
(Data as of June 30, 2003)

Company Name: NewSouth Communications

CLEC Table-4: SWITCH DATA (VGE Basis)

Exchange	Wire Center	CLEC Switch Location	CLEC Access Lines			Actual Qty-Type-Manuf.	Proposed Qty-Type-Manuf.	10
			Res.	Bus.	Total			
Winter Haven	WHHFLBUDS0	200 Ave. B NW, Ste 204 Winter Haven, FL 33863	0	22680	22680	1,5ESS, Lucent	0	
Jacksonville	JCVLFLJBOS0	421 W. Church St., Ste 701 Jacksonville, FL 32202	0	9331	9331	1,5ESS, Lucent	0	
Destin	DESTFLSTDS1	185 Stahlman Avenue Destin, FL 32541	0	3850	3850	1,EWSD, Siemens	0	
Total			0	35861	35861			

NOTES/INSTRUCTIONS FOR COMPLETING TABLE-4:

1. An access line connects the end-user's customer premises equipment (CPE) to the serving switch (in this case, the CLEC's switch) and allows the end-user to originate and/or terminate local telephone calls on the public switched telephone network (PSTN). The access line counts in Table-4 above must be based on all of your different types of access lines such as copper, fiber, hybrid fiber/copper, coaxial cable, hybrid fiber/coaxial cable, fixed-wireless (free-space optics, microwave or satellite, etc.)
2. Access line data must be calculated as voice-grade equivalents (VGEs). A VGE is defined as a line or channel (wireline or wireless) that connects the end-user's CPE to the serving switch (in this case, the CLEC's switch) and allows the end-user to originate and/or terminate local telephone calls on the PSTN.
3. Exchanges should be listed in alphabetical order.
4. Residential and business access line counts may be obtained by querying your billing database, provisioning database, the

FLORIDA PUBLIC SERVICE COMMISSION

2003 CLEC Data Request

(Data as of June 30, 2003)

Company Name: **NewSouth Communications**

CLEC Table-4: SWITCH DATA (VGE Basis)

Exchange	Wire Center	CLEC Switch Location	CLEC Access Lines			Actual Qty-Type-Manuf.	Proposed Qty-Type-Manuf.	10
			Res.	Bus.	Total			
Winter Haven	WNNHFLBDS0	200 W. Orange St., Ste 204 Winter Haven, FL 33883	0	22680	22680	1, 5ESS, Lucent	0	
Jacksonville	JCVLFLJBD0	221 W. Orange St., Ste 701 Jacksonville, FL 32202	0	9331	9331	1, 5ESS, Lucent	0	
Destin	DESTFLSTS1	100 Stanman Avenue Destin, FL 32541	0	3850	3850	1, EWSD, Siemens	0	
Total:			0	35861	35861			

NOTES/INSTRUCTIONS FOR COMPLETING TABLE-4:

1. An access line connects the end-user's customer premises equipment (CPE) to the serving switch (in this case, the CLEC's switch) and allows the end-user to originate and/or terminate local telephone calls on the public switched telephone network (PSTN). The access line counts in Table-4 above must be based on all of your different types of access lines such as copper, fiber, hybrid fiber/coaxial cable, hybrid fiber/coaxial cable, fixed-wireless (free-space optics, microwave or satellite, etc.)

2. Access line data must be calculated as voice-grade equivalents (VGEs). A VGE is defined as a line or channel (wireline or wireless) that connects the end-user's CPE to the serving switch (in this case, the CLEC's switch) and allows the end-user to originate and/or terminate local telephone calls on the PSTN.

DO NOT INCLUDE LINES OR CHANNELS THAT DO NOT HAVE SWITCH PORT ASSIGNMENTS SUCH AS PRIVATE LINES.

EXAMPLE: A channelized DS1 can support 24 voice-grade channels, i.e., 24 DS0s. However, if only 20 of the 24 DS0s have switch port assignments, then 20 would be entered into Table-4 above as the VGE for this DS1 example.

3. Exchanges should be listed in alphabetical order.

4. Residential and business access line counts may be obtained by querying your billing database, provisioning database, the NANPA's website, etc. It is easy to use the data at the NANPA's website, go to <http://www.nanpa.com> then click on "CentralOffice Codes (Prefixes)", "Download Assignment Records", scroll down to "CO Code (Prefix) Status-Excel Spreadsheet Files," click on and open file "EstCodes.zip", click on "FL" tab, click on edit, find, and then enter each NPA-NXX to identify the exchange ("Rate Center") and serving wire center ("Switch").

5. Enter location (street address, city, state, and zip code) of your switch that is actually being used to provide local exchange telecommunications service.

6. Enter quantity, type (circuit or packet), and manufacturer of your switch that is actually being used to provide local exchange telecommunications service.

7. Enter quantity, type (circuit or packet), and manufacturer of proposed switch to be used to provide local exchange telecommunications service.

8. Enter proposed installation date (mm/yy) of proposed switch to be used to provide local exchange telecommunications service.

9. Enter column totals without duplication.