

LAW OFFICES **ORIGINAL**
ROSE, SUNDBSTROM & BENTLEY, LLP
2548 BLAIRSTONE PINES DRIVE
TALLAHASSEE, FLORIDA 32301

CHRIS H. BENTLEY, P.A.
ROBERT C. BRANNAN
DAVID F. CHESTER
F. MARSHALL DETERDING
JOHN R. JENKINS, P.A.
STEVEN T. MINDLIN, P.A.
DAREN L. SHIPPY
WILLIAM E. SUNDBSTROM, P.A.
DIANE D. TREMOR, P.A.
JOHN L. WHARTON
ROBERT M. C. ROSE, OF COUNSEL
WAYNE L. SCHIEFELBEIN, OF COUNSEL

(850) 877-6555
FAX (850) 656-4029
www.rsbatorneys.com

CENTRAL FLORIDA OFFICE
600 S. NORTH LAKE BLVD., SUITE 160
ALTAMONTE SPRINGS, FLORIDA 32701
(407) 830-6331
FAX (407) 830-8522

MARTIN S. FRIEDMAN, P.A.
VALERIE L. LORD, OF COUNSEL
(LICENSED IN TEXAS ONLY)

REPLY TO ALTAMONTE SPRINGS

October 9, 2003

HAND DELIVERY

RECEIVED-FPSC
03 OCT -9 PM 12:20
COMMISSION
CLERK

Ms. Blanca Bayo
Commission Clerk and Administrative Services Director
Florida Public Service Commission
2540 Shumard Oak Boulevard
Tallahassee, FL 32399

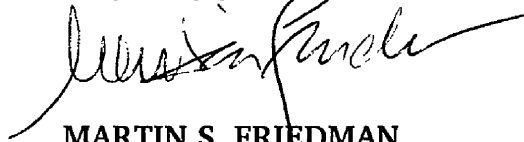
Re: Docket No. 030958-WS; Application of Utilities, Inc. of Florida for Amendment
to Certificate of Authorization
Our File No.: 30057.74

Dear Ms. Bayo:

Enclosed for filing are the original and fifteen (15) copies of **Amended** Exhibits
"A" and "D" to Utilities, Inc. of Florida's Application filed in the above-referenced
docket

Should you have any questions regarding the enclosed, please do not hesitate
to give me a call.

Very truly yours,



MARTIN S. FRIEDMAN
For the Firm

AUS _____
CAF _____
CMP _____
COM _____
CTR _____
ECR _____
GCL _____
OPC _____
MMS _____
SEC 1 MSF/dmp
OTH _____ Enclosures

cc: Mr. Richard Redemann (w/enclosures & full size maps) (via hand delivery)
Mr. Steven M. Lubertozi (w/enclosures)
Mr. Patrick C. Flynn (w/enclosures)
David L. Orr, P.E. (w/enclosure)

DOCUMENT NUMBER-DATE

09862 OCT-9 8

FPSC-COMMISSION CLERK

BEFORE THE FLORIDA PUBLIC SERVICE COMMISSION

IN RE: Application of
UTILITIES, INC. OF FLORIDA
for extension of water service
in Seminole County, Florida

Docket No.: 030958-WS

NOTICE OF FILING

Applicant, UTILITIES, INC. OF FLORIDA, hereby notices filing in the above-referenced docket Amended Exhibits "A" and "D" to its Application for Amendment to Certificate of Authorization.

Respectfully submitted on this
9th day of October, 2003, by:

ROSE, SUNDSTROM & BENTLEY, LLP
600 S. North Lake Boulevard
Suite 160
Altamonte Springs, Florida 32701
(407) 830-6331
(407) 830-8522 Fax

By: 

MARTIN S. FRIEDMAN
For the Firm

ASO\Utilities\74) UIF\Territory Ext. 2003\NOF - Amd Exh A to Application

DOCUMENT NUMBER-DATE
09862 OCT-9 8
FPSC-COMMISSION OFFICE

Exhibit "A"

**UTILITIES INC. OF FLORIDA
BEAR LAKE MANOR AND CRYSTAL LAKE WATER SYSTEMS
LEGAL DESCRIPTIONS**

Bear Lake Manor

PARCEL "A"

Commence at the Southeast corner of Section 18, Township 21 South, Range 29 East, Seminole County, Florida and run North, a distance of 866 feet to the **POINT OF BEGINNING**; thence West, a distance of 67 feet; thence South 43° West, a distance of 99 feet; thence North 48° West, a distance of 547 feet; thence North 74° West, a distance of 274 feet; thence South 41° West, a distance of 157 feet; thence North 57° West, a distance of 237 feet; thence South 35° West, a distance of 271 feet; thence North 74° West, a distance of 102 feet; thence North 54° West, a distance of 166 feet; thence North 79° West, a distance of 148 feet; thence North, a distance of 584 feet; thence South 63° East, a distance of 364 feet; thence South, a distance of 277 feet; thence East, a distance of 1,312 feet; thence South, a distance of 453 feet to the **POINT OF BEGINNING**.

And

PARCEL "B"

Commence at the Southwest corner of Section 17, Township 21 South, Range 29 East, Seminole County, Florida and run North, a distance of 1,954 feet to the **POINT OF BEGINNING**; thence continue North, a distance of 358 feet; thence East, a distance of 635 feet; thence South, a distance of 358 feet; thence West, a distance of 635 feet to the **POINT OF BEGINNING**.

And

PARCEL "C"

Commence at the Southwest corner of Section 17, Township 21 South, Range 29 East, Seminole County, Florida and run North, a distance of 2,645 feet to the **POINT OF BEGINNING**; thence West, a distance of 620 feet; thence North, a distance of 155 feet; thence East, a distance of 491 feet; thence South, a distance of 48 feet; thence East, a distance of 155 feet; thence North, a distance of 39 feet; thence East, a distance of 1,039 feet; thence North, a distance of 299 feet; thence East, a distance of 217 feet; thence South, a distance of 446 feet; thence West, a distance of 1,283 feet to the **POINT OF BEGINNING**.

Crystal Lake

PARCEL "A"

Commence at the Northwest corner of Section 3, Township 20 South, Range 29 East, Seminole County, Florida and run East, a distance of 637 feet to the **POINT OF BEGINNING**; thence continue East, a distance of 211 feet; thence South, a distance of 318 feet; thence East, a distance of

228 feet; thence South, a distance of 46 feet; thence West, a distance of 439 feet; thence North, a distance of 364 feet to the **POINT OF BEGINNING**.

And

PARCEL "B"

Commence at the Northwest corner of Section 3, Township 20 South, Range 29 East, Seminole County, Florida and run East, a distance of 1,396 feet; thence South, a distance of 390 feet to the **POINT OF BEGINNING**; thence South 83° East, a distance of 197 feet; thence South 77° East, a distance of 196 feet; thence South 68° East, a distance of 143 feet; thence South 30° West, a distance of 703 feet; thence North 39° West, a distance of 281 feet; thence South 59° West, a distance of 66 feet; thence North 46° West, a distance of 192 feet; thence South 43° West, a distance of 354 feet; thence South 20° West, a distance of 154 feet; thence South 42° West, a distance of 121 feet; thence South 63° West, a distance of 107 feet; thence South 26° East, a distance of 170 feet; thence South 36° West, a distance of 116 feet; thence South 64° West, a distance of 72 feet; thence North 12° West, a distance of 237 feet; thence North 16° West, a distance of 84 feet; thence North 68° East, a distance of 92 feet; thence North 23° West, a distance of 167 feet; thence East, a distance of 105 feet; thence North, a distance of 255 feet; thence East, a distance of 26 feet; thence North, a distance of 154 feet; thence East, a distance of 366 feet; thence North 47° East, a distance of 388 feet; thence North, a distance of 57 feet to the **POINT OF BEGINNING**.

And

PARCEL "C"

Commence at the Northwest corner of Section 3, Township 20 South, Range 29 East, Seminole County, Florida and run South, a distance of 1,582 feet to the **POINT OF BEGINNING**; thence North 76° East, a distance of 95 feet; thence North 73° East, a distance of 392 feet; thence South 15° East, a distance of 215 feet; thence South 54° West, a distance of 218 feet; thence South 35° West, a distance of 199 feet; thence South 71° West, a distance of 83 feet; thence North 86° West, a distance of 83 feet; thence South, a distance of 84 feet; thence West, a distance of 101 feet; thence North 71° West, a distance of 322 feet; thence North 52° West, a distance of 298 feet; thence North, a distance of 293 feet; thence South 64° East, a distance of 210 feet; thence South 79° East, a distance of 162 feet; thence South 89° East, a distance of 159 feet; thence North 81° East, a distance of 68 feet to the **POINT OF BEGINNING**.

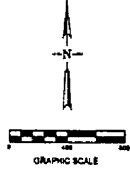
And

PARCEL "D"

Commence at the Northwest corner of Section 3, Township 20 South, Range 29 East, Seminole County, Florida; thence run West, a distance of 556 feet; thence South, a distance of 704 feet to the **POINT OF BEGINNING**; thence continue South, a distance of 238 feet; thence West, a distance of 534 feet; thence North, a distance of 637 feet; thence East, a distance of 116 feet; thence South, a distance of 399 feet; thence East, a distance of 418 feet to the **POINT OF BEGINNING**.

Exhibit “D”

Full-sized maps will be provided to Staff



SERVICE AREA IS LOCATED IN
TOWNSHIP 21 SOUTH, RANGE 29 EAST

PARCEL "C"

PARCEL "B"


PARCEL "A"

LINE	BEARING	LENGTH
L1	WEST	87
L2	S 42° W	90
L3	N 48° W	547
L4	N 74° W	274
L5	S 41° W	157
L6	N 57° W	237
L7	S 35° W	271
L8	N 74° W	102
L9	N 54° W	156
L10	N 7° W	148
L11	NORTH	584
L12	S 83° E	364
L13	SOUTH	277
L14	EAST	1312
L15	SOUTH	453
L16	NORTH	358
L17	EAST	835
L18	SOUTH	258
L19	WEST	835
L20	WEST	620
L21	NORTH	105
L22	EAST	491
L23	SOUTH	48
L24	EAST	155
L25	NORTH	39
L26	EAST	1026
L27	NORTH	299
L28	EAST	217
L29	SOUTH	446
L30	WEST	1293
L31	NORTH	854
L32	NORTH	1954
L33	NORTH	2545

SECTION 18
SECTION 19
SECTION 17
SECTION 20

POINT OF COMMENCEMENT
SOUTHEAST CORNER OF
SECTION 18, TOWNSHIP 21 SOUTH,
RANGE 29 EAST, SEMINOLE COUNTY, FLORIDA
AND THE SOUTHWEST CORNER OF
SECTION 17, TOWNSHIP 21 SOUTH,
RANGE 29 EAST, SEMINOLE COUNTY, FLORIDA

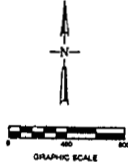
- LEGEND:
- EXISTING SERVICE AREA BOUNDARY
 - - - - - PROPOSED SERVICE AREA BOUNDARY
 - - - - - SECTION LINE



Registered Professional Engineer
 License No. 11002
 State of Florida
 Date: NOV 2002
 Scale: 1" = 400'
 File: Bear Lake Manor
 Approved: 2002 System

Agency	Name	Date	Drawn by	Checked by	Approved by	No.	Date
PROPOSED SERVICE AREA ADDITION UTILITIES INC. OF FLORIDA Bear Lake Manor Water System Seminole County, Florida	SAK	11/02	SAK	SAK	SAK	1	
	DGA	11/02	DGA	DGA	DGA	1	
	DEA	11/02	DEA	DEA	DEA	1	

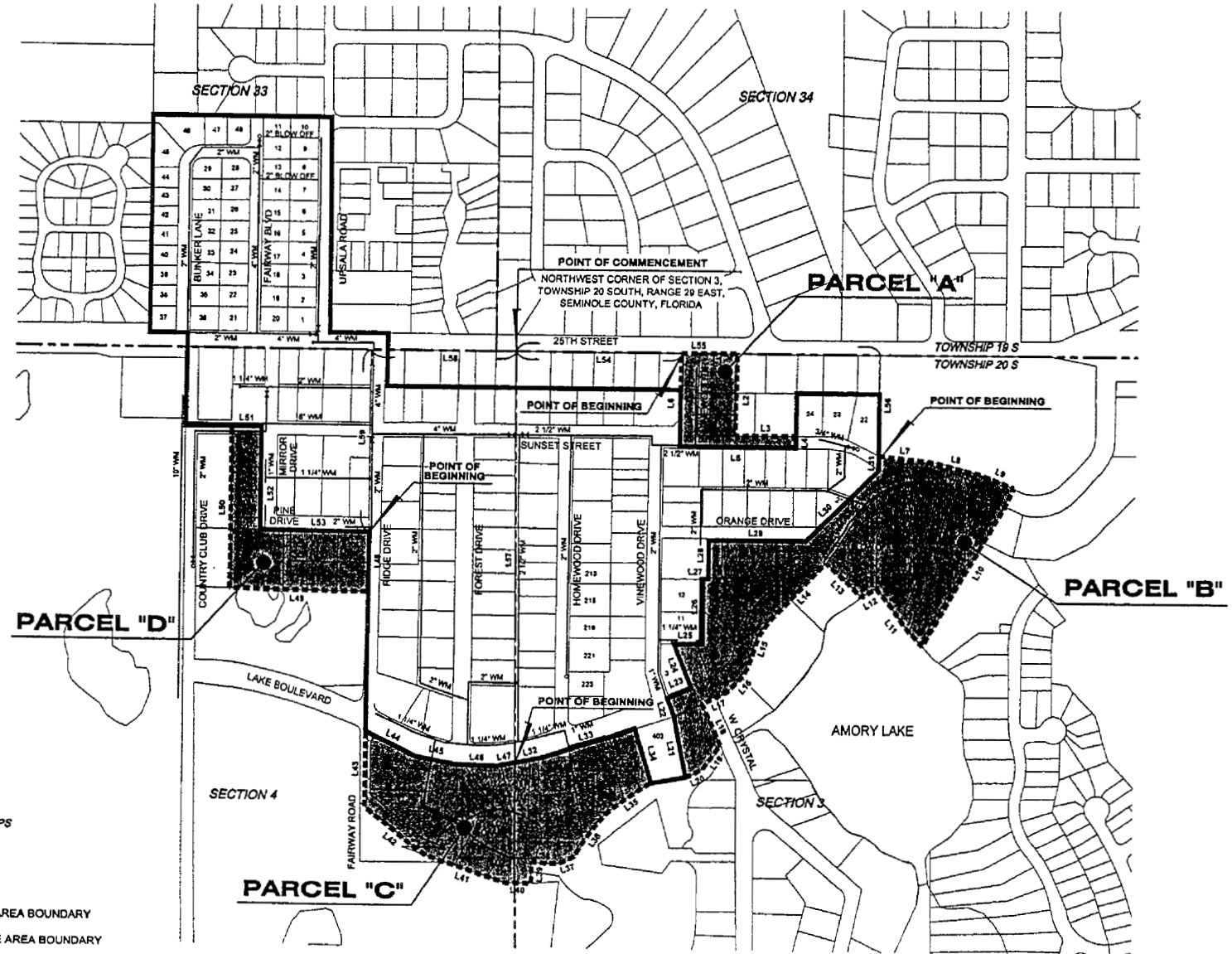
Copyright © 2002 by Utilities Inc. 0211



LINE	BEARING	LENGTH
L1	EAST	211
L2	SOUTH	718
L3	EAST	228
L4	SOUTH	48
L5	WEST	438
L6	NORTH	284
L7	S 83° E	187
L8	S 77° E	108
L9	S 83° E	182
L10	S 20° W	752
L11	S 20° W	281
L12	S 89° W	80
L13	N 44° W	182
L14	S 43° W	354
L15	S 20° W	154
L16	S 42° W	121
L17	S 82° W	107
L18	S 20° E	170
L19	S 20° W	118
L20	S 84° W	72
L21	N 12° W	237
L22	N 18° W	80
L23	N 88° E	87
L24	N 25° W	142
L25	EAST	100
L26	NORTH	250
L27	EAST	28
L28	NORTH	184
L29	EAST	288
L30	N 41° E	248
L31	NORTH	25
L32	N 74° E	88
L33	N 73° E	282
L34	S 15° E	210
L35	S 14° W	218
L36	S 06° W	108
L37	S 71° W	87
L38	N 88° W	87
L39	SOUTH	84
L40	WEST	101
L41	N 71° W	222
L42	N 53° W	298
L43	NORTH	282
L44	S 84° E	270
L45	S 78° E	182
L46	S 88° E	158
L47	N 81° E	88
L48	SOUTH	288
L49	WEST	234
L50	NORTH	87
L51	EAST	118
L52	SOUTH	298
L53	EAST	418
L54	EAST	87
L55	EAST	1508
L56	SOUTH	282
L57	SOUTH	182
L58	WEST	188
L59	SOUTH	784

SERVICE AREA IS LOCATED IN TOWNSHIPS 19 AND 21 SOUTH, RANGE 29 EAST

- LEGEND:
- EXISTING SERVICE AREA BOUNDARY
 - - - - - PROPOSED SERVICE AREA BOUNDARY
 - SECTION LINE



PROPOSED SERVICE AREA ADDITION

UTILITIES INC. OF FLORIDA

Crystal Lake Water System

Seminole County, Florida

Figure No. **1**

Scale: 1" = 400'

Sheet: 1907/2002

Date: NOV 2002

Drawn by: DLM

Checked by: DLM

Approved by: DLM

Project No: 180322

File: C:\msd\180322\180322.dwg

Author: [Name]

Reviewer: [Name]

Approved: [Signature]