

State of Florida



ORIGINAL
Public Service Commission
CAPITAL CIRCLE OFFICE CENTER • 2540 SHUMARD OAK BOULEVARD
TALLAHASSEE, FLORIDA 32399-0850

-M-E-M-O-R-A-N-D-U-M-

DATE: March 19, 2004
TO: Kay B. Flynn, Chief of Records and Hearing Services, Division of the Commission
 Clerk & Administrative Services
FROM: Katherine E. Fleming, Attorney, General Counsel *KEF*
RE: Docket No. 030954-GU - Petition for rate increase by Indiantown Gas Company

Please place the attached responses dated March 9, 2004, from Brian Powers in response to PSC data request issued February 5, 2004, in the docket file.

RECEIVED-FPSC
04 MAR 19 PM 1:22
COMMISSION
CLERK

AUS _____
 CAF _____
 CMP _____
 COM _____
 CTR _____
 ECR _____
 GCL _____
 OPC _____
 MMS _____
 SEC / _____
 OTH _____

DOCUMENT NUMBER-DATE

03699 MAR 19 03

FPSC-COMMISSION CLERK

INDIANTOWN Gas company, inc.

ORIGINAL



CLEAN AND EFFICIENT NATURAL GAS AND PROPANE GAS FOR ALL YOUR ENERGY NEEDS

March 9, 2004

Ms. Blanca Bayo
Florida Public Service Commission
2540 Shumard Oak Blvd.
Tallahassee, Fl. 32399

Re: Docket No. 030954-GU Petition for
Rate Increase by Indiantown Gas Company

RECEIVED
MAR 10 AM 10:36
COMMISSION
CLERK

Dear Ms Bayo:

Enclosed for filing in the above referenced docket on behalf of Indiantown Gas Company are the company's responses to staff's February 5, 2004 data request (previously sent by facsimile on March 5, 2004).

Sincerely,

Brian J. Powers
President
Indiantown Gas Co.

- AUS _____
- CAF _____
- CMP _____
- COM _____
- CTR _____
- ECR _____
- GCL _____
- OPC _____
- MMS _____
- SEC _____
- OTH _____

DOCUMENT NUMBER-DATE

16600 SW WARFIELD BLVD. • P. O. BOX 8 • INDIANTOWN, FLORIDA 32906
772.597.2268 or 772.597.2168 • FAX 772.597.2068

03340 MAR 10 3
FPSC-COMMISSION CLERK

Indiantown Gas Company
Docket No. 030954
Response to Staff Data Request
February 5, 2004

1. Provide the following information concerning the vehicles anticipated to be retired in February 2003 from Account 392 as indicated on Schedule G-1 page 25 of 28.

IGC Response:

Model Year	Model	Make	Date Acquired	Mileage
2000	2500	Chevy Van	11/2000	55,000

This vehicle was transferred to non utility plant in February 2003.

2. Provide the following information concerning the vehicles anticipated to be retired in 2004 from Account 392 as indicated on Schedule G-1, Page 28 of 28

IGC Response:

Model Year	Model	Make	Date Acquired	Mileage
1996	2500	Dodge	9/96	40,000
1998	150	Ford	5/98	90,120

3. Does Indiantown Gas Company have a vehicle replacement policy or program? If so, please explain.

IGC Response: Yes, based on current depreciation rates, the policy of the company is to replace utility vehicles every six years.

4. Provide the following information concerning the vehicles anticipated to be purchased in 2004 for account 392 as indicated on Schedule G-1, page 27 of 28.

IGC Response:

Model Year	Model	Make	New/Used	Anticipated Use
2004	250	Ford	New	Executive Meter Changeout Moving Backhoe
2004	250	Ford	New	Gas Main Install

5. Provide a detailed explanation for the anticipated capital expenditure in June 2004 in Account 303 as indicated on Schedule G-1, page 27 of 28.

IGC Response: See attached.

6. Provide a detailed explanation for the anticipated capital expenditure in June 2004 in Account 394 as indicated on Schedule G-1, page 27 of 28.

IGC Response: See attached.

7. Provide a detailed explanation for the anticipated capital expenditure in June 2004 in Account 396 as indicated on Schedule G-1, page 27 of 28.

IGC Response: See attached.

8. Provide copies of Indiantown Gas Company's construction and or capital budgets for the years 1999, 2000, 2001, 2002 and 2003

IGC Response: The company initiated an annual capital budget process in November 2003 for FY 2004.

9. Please provide monthly customer counts and therm usage by month by rate class for the period Jan 1998 through Dec 2003.

IGC Response: See attached.

10. Please provide a forecast variance report for 2003 comparing forecasted customers and therms to actual customers and therms by rate class.

IGC Response: See attached.

Indiantown Gas Company
Docket No. 030954
Response to Staff Data Request
February 5, 2004

Attachment: Response to question # 5

Upgraded software package	
Base Software Cost	\$16,350
G/L Interface	\$ 3,000
Meter Reader Interface	\$ 4,250
Form Feed Interface	\$ 3,000
Gas Leak Reporting	\$ 3,000
3 rd Party Marketer Reporting	\$ 2,540
Operating System	\$ 660
Hardware	\$9,950
Total	\$42,750

Able Software, Inc.
 23 Mauchly, Suite 105
 Irvine, CA 92618-2330
 949-341-9100 • Fax 949-341-9104

QUOTATION
Valid Through January 31, 2004



Enterprise Solutions for the Utility Industry

Customer Information

Company Name: Indiantown Gas Co.
 2003

Contact: Brian J. Powers

Date of Proposal: December 29,

Address: P.O. Box 8

City: Indiantown

State: FL

Zip: 34956-0008

Phone: (561) 597-2268

Fax: 772-597-2068

Email:

Qty	Description	Family	Discount	SRP	Price	Total	Note
1	Utility Star – Standard Database Module (includes 2 users)	Standard		7,500	7,500	7,500	
	Each additional Use Concurrent Log-On	Standard		1,500	1,500	OPTIONAL	
1	Standard Bill Print (Note: there will be no charge if you were to use ASI standard format)	Standard		N/C	N/C	N/C	
1	GL Interface to Quick Books (or your accounting program)	Standard		3,000	3,000	3,000	
	Services						
	3 days On-site Support, Analysis, Discovery Day, Training (3 days recommended)	Services		1,250	1,250	3,750	
	Travel Expenses	Services		TBD	TBD	TBD	
	Annual Support and Maintenance (Must have high speed internet connection)						
	Annual Maintenance and Support Fee– unlimited support	Services		2,100	2,100	2,100	

Order Sub Total	10,500
Able Software Maintenance and Support	2,100
Other Services and Products Subtotal	3,750
Shipping Charge	TBD
TOTAL	16,350

Please sign below and assign your PO number

 Authorized Signature

 Date

 Purchase Order Number

 Sales Tax ID

FROM : ABLE SOFTWARE

FAX NO. : 949 3419104

Dec. 29 2003 01:15PM P2

OPTIONAL INTERFACES

Software

Meter Reading Software Interface(Psion Only) <i>-includes: interface plus Hand Held Meter Reading Software</i>	3,500
Meter Reading Software Interface(Other Brands)	4,250
Payment Bar Code Kit <i>-includes: Bar Code Scanner, Bar Code Font Library & Interface Software</i>	3,500
Custom Bill Print Form – <i>review required</i>	3,000
G/L Interface	3,500
Dot Matrix Form Feed Printer Interface	3,000
CASS Kit <i>-includes: Interface Software, & Postal Bar Code Font Library</i> <i>-CASS Kit Interface Only</i>	4,295 2,000
ACH Interface	3,000
RUBS	5,000
Receipt Printer & Cash Drawer Software Kit <i>-includes: Receipt Printer, Cash Drawer, Interface Software</i>	3,500
Winter/Summer Sewer Averaging <i>-Available Upon Request</i>	Inclusive
Lock Box Interface	3,000
Lien Processing	3,000
Manual Pay by Revenue Code	3,000
Gas Leakage Reporting	3,000

Hardware

Psion Workabout Hand Held Meter Reading Unit Base Units Include: 1 MB Solid State RAM, RS232, 2MB Flash Disk, Lithium Cell Back-up Battery, 2 "AA" Main Batteries, Data Transfer Serial Cable & Carrying Case	1,500
Radix fW230 Mobile Computer	2,900
Psion Single Docking Station/Fast Charger	695
Laser Scanner	795
Receipt Printer	750
Cash Drawer	500

Indiantown Gas Company
Docket No. 030954
Response to Staff Data Request
February 5, 2004

Attachment: Response to question # 6



Heath Consultants Inc
9030 Monroe Rd
Houston, TX 77061
1-800-432-8487
www.heathus.com

Date: 12/29/03

To: Indiantown Gas Company
Brian Power
Phone: 772-597-2168
Fax: 772-597-2068

From: Heath Consultants Incorporated
Daniel M. Perry
Phone: 800-432-8487
Fax: 713-844-1309

Pages: 7

Subject: Quotation Request

Mr. Power,
Thank you for your recent phone inquiry and as discussed it is my pleasure to supply the following quotation for your consideration.

Part Number 2107248	Heath CGI	975.00ea
Part Number 22082000	FI-2000	\$2,940.00ea
Part Number 100023-0	Detecto Pak III	4,200.00ea

Prices quoted are valid for 30 days from the date of this fax. Orders are shipped f.o.b. Houston, TX. Shipping and applicable tax are extra.

If I may be of further assistance you may contact me at the number listed above.

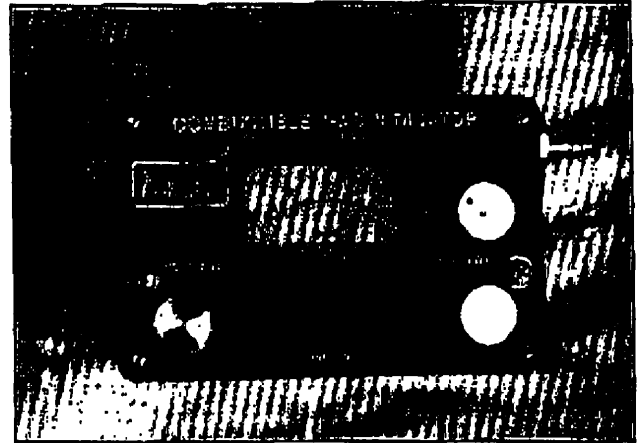
Best regards



Combustible Gas Indicator

The Heath Combustible Gas Indicator is a dual range instrument designed for the testing and pinpointing of underground gas leaks. Designed for easy operations, the CGI is especially useful for testing bar holes where combustible gases or vapors may accumulate. It is also suitable for testing hazardous work areas such as manholes, sewers, and other confined spaces. Calibrated on either natural gas or propane, the instrument has two ranges - natural gas - 0 to 5 LEL and 0 to 100% gas by volume and for propane - 0 to 2.1% LEL and 0 to 100% gas by volume. A charcoal filter and water trap are included with your purchase.

Built to withstand rough field environments, the Heath CGI is constructed with a die cast aluminum case and incorporates advanced electrical design characteristics. The 5% - 2.1% range uses catalytic filaments in a matched bridge circuit which compensates for decreasing battery voltage. The % Gas range uses thermal conductivity filaments in a separate Wheatstone bridge circuit which eliminates zero drift when changing scale.

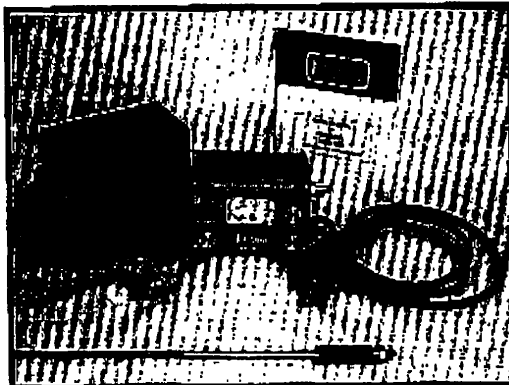


Features

- Complete unit with hose, probe, water stop and hydrocarbon filter
- Dual Range: 0-5%, 0-100% methane
0-2.1%, 0-100% propane illuminated meter
- 2 "D" cell replaceable Energizer batteries
- Catalytic and thermal conductive filaments
- Wheatstone bridge circuitry
- Quick response
- Separate % gas zero circuitry
- Protective cover with carrying strap

See back for specifications and ordering instructions

Combustible Gas Indicator



Specifications

Power Supply:	Two 1.5V Energizer D cells.	Probe:	Brass or lexan
Calibration:	Methane/Propane	Weight:	4.5 lbs.
Ranges:	Natural gas 0-5% gas, 0-100% gas	Size:	6 1/2" x 5 1/4" x 4"
	Propane 0-2.1% gas, 0-100% gas	Sampling Method:	Hand aspirated
Detection Method:	Catalytic and thermal conductivity	Sampling Time:	One second per five feet of hose
Operating		Warranty:	1 year parts & labor
Temperature:	0-120 degrees F		
Meter Light:	Standard, shows ranges selected		

Heath No.	Description
2107248 - Natural Gas 2107287 - Propane	Heath Consultants Gas Indicator kit includes: instrument, five foot hose, 36" brass probe with dust filter, hydrophobic water stop, heavy hydrocarbon filter, instruction manual, protective cover with carrying strap.
	Accessories
1900464	40" Plunger Bar without ball tip
1900474	40" Plunger Bar with ball tip
0123309-1	CGI calibration kit - natural gas
8300134	CGI calibration kit - propane
0124615	Replacement heavy hydrocarbon filter
2027437	Heath water stop

Heath Consultants Incorporated operates under a continual product improvement program and reserves the right to make improvements and/or changes without prior notification.



Heath Consultants Incorporated
Houston, TX
713/844-1300
Fax: 713/844-1309
1-800-HEATH-US
www.heathus.com

Distributed by:



DETECTO-PAK® III

Compact, Portable Flame Ionization Gas Leak Detector

The DETECTO-PAK III combines Flame-Ionization technology with a positive sample draw in a small compact design for a rugged, field portable leak detector. Designed to be used for all types of leak surveys and environmental investigations, its detection capabilities range from 1 to 10,000 PPM (parts per million).

Outstanding features include the use of internal fuel components to eliminate bulky external regulators and lecture bottles. A large analog meter, with audible alarm gives the operator visual and audible leak indications. A top panel layout allows the operator to have fingertip control over the instrument operation.

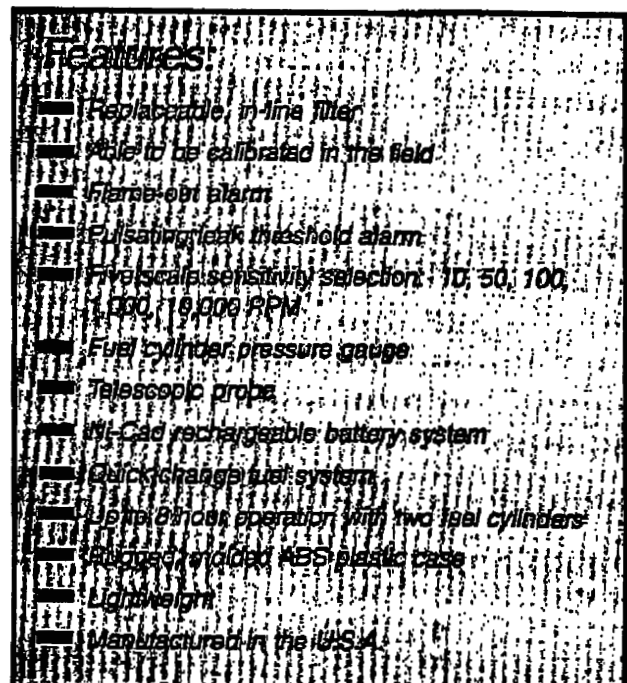
The DETECTO-PAK III can be carried by the use of a shoulder strap or with the built-in carrying handle. It can also be used in a mobile leak vehicle equipped with an auxiliary sample system.

Operating Information

The DETECTO-PAK III uses the flame-ionization principle for detection of small quantities of hydrocarbons in the PPM (parts per million) levels. It uses conventional 40% H₂/60% N₂ fuel, making it compatible with existing systems.

The DETECTO-PAK III incorporates a unique charge/float battery charger to recharge its Ni-Cad power pack. This charger eliminates the need for timed charging, as its current output drops as the batteries are charged. (No memory build up.)

See back for specifications and ordering instructions



ISO 9001 CERTIFIED www.metrotech.com

- Home
- Products Overview
- Products by Industry
 - contracting
 - gas & oil
 - power / hydroelectric
 - telecommunications / CATV
 - water / wastewater
- About Us
 - additional applications
 - directions
 - employment
 - future
 - our mission
 - our products
 - who we serve
- Service Centers
- What's New
- Contact Us
- Links

Shopping Cart

Your shopping cart contains the following items:

QTY	PRODUCT	PRICE	TOTAL
1	9890 DLXT Triple Frequency Line Locator	3,335.00	3,335.00
Total			3,335.00

If you do not wish to purchase any of the items shown above, please change the quantity to zero and press the Change button. If you wish to change the quantity, change it and press Change.

[Continue Shopping](#)

Note:
 Products can only be purchased on-line with a US shipping address at the present time. Please call our Order Desk at 1-408-734-1400 if you would like to place an order from an address outside of the US. We will also offer sales on credit, please call our Order Desk to apply today. Or [Click here](#) to download our credit application form and fax it directly to 408-743-5720.



Heath Consultants Inc
9030 Monroe Rd
Houston, TX 77061
1-800-432-8487
www.heathus.com

Date: 12/29/03

To: Indiantown Gas Company
Brian Power
Phone: 772-597-2168
Fax: 772-597-2068

From: Heath Consultants Incorporated
Daniel M. Perry
Phone: 800-432-8487
Fax: 713-844-1309

Pages: 3

Subject: Odorator quotation request

Mr. Power,
Here is the information on the Odorator.

Part Number 0705637-0 Heath Odorator with case \$2,215.00ea
Price quoted is valid for 30 days from the date of this fax. Orders are shipped f.o.b.
Houston, TX. Shipping and applicable tax are extra.

Best regards



ODORATOR®

Heath's Odorator - The Latest In Odor-Level Evaluation

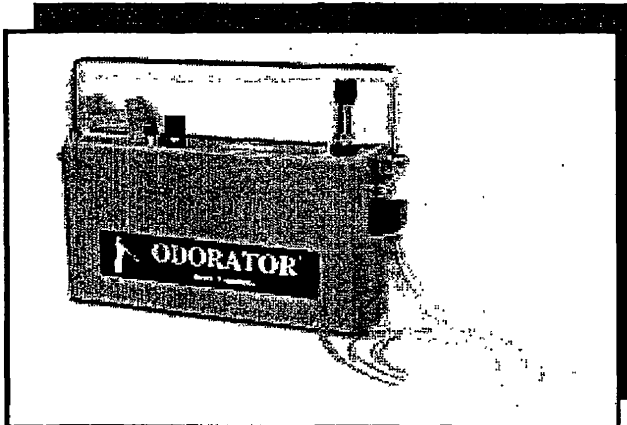
The Heath ODORATOR® offers the latest state-of-art technology for evaluating odor levels in gas systems.

This instrument was designed for ease of operation and interpretation. It is light weight, yet rugged for field use.

Its major components include:

- a linear flow metering valve to introduce gas samples to the system.
- a solid state mass flow sensor.
- a blower to mix the gas sample with air for evaluation.
- a digital display.

The ODORATOR is an ideal tool for customer service personnel and other individuals testing odor levels in gas distribution or transmission systems.



Features:

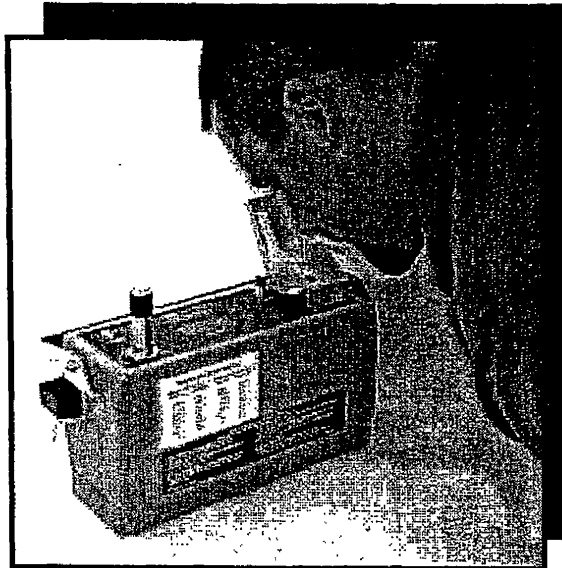
- ➔ *Conformally coated solid state electronics printed circuit board.*
- ➔ *Temperature and flow compensated solid state mass flow sensor.*
- ➔ *Internal gas regulator, vented in the event of inlet over pressure.*
- ➔ *Digital liquid crystal display, backlit for low light conditions.*
- ➔ *Polycarbonate panel overlay for sealing out moisture and dirt.*
- ➔ *Low battery indicator.*
- ➔ *Low air flow indicator.*
- ➔ *Battery operation for portability.*
- ➔ *Fused for operator safety.*
- ➔ *Reverse battery protection.*
- ➔ *Proper use of the ODORATOR fulfills D.O.T. Code 192.625 requirements.*

See back for specifications and ordering instructions

ODORATOR®

Operating Information

The ODORATOR mixes natural or propane gas with air in concentrations from zero to approximately 2% for natural gas or 1% for propane. The operator slowly opens the linear flow metering valve which allows the sample gas to enter the instrument, while at the same time sniffing the blower output with his nose placed close to the exhaust port. When odorant in the exhaust flow is detected, the operator simply depresses the "read" button to observe the percentage of gas concentration on the digital display. A calibration chart is included for interpolating the instrument readings over its full measurement range.



Specifications

Weight of Unit: 7.5 lbs (3.4 kg)

Size, H-W-L: 6 x 4 x 12 in. (15 x 10 x 30 cm)

Detection Range: .00 to 1.99% natural gas minimum
.00 to 1.10% propane gas minimum

Inlet Pressure Range: 4 p.s.i.g. maximum

Digital Readout: .00 to 1.99%

Sampling Tube: Inert tubing - 5 ft. long
3/16 (.19)" ID x 5/16 (.31)" OD

Accuracy: Within 10% of actual after correction using the calibration chart

Power: 8 C-size alkaline batteries for 12 VDC at 35 mA
Lo Batt is at 10 VDC

Fuse: 1 amp fast blow.

Operating Life: 30 hours of continuous use

Shipping Carton, H-W-L: 10 x 12 x 18 in.
(25 x 30 x 46 cm)

Temperature Range: 32°F to 120°F, operational

Total Shipping Weight: 9.5 lbs (4.32 kg)

Warranty: 1 year workmanship, labor and parts

Descriptions

P/N 0705637:

ODORATOR includes: instrument calibrated at 1.0% natural gas, batteries, sampling hose, and instruction manual.

P/N 0705641:

ODORATOR includes: instrument calibrated at .55% propane gas, batteries, sampling hose, and instruction manual.

P/N 0727631:

ODORATOR Upgrade Kit (for instruments shipped prior to May 1, 1995)

P/N 0727632:

ODORATOR carrying case

Heath Consultants Incorporated operates under a continual product improvement program and reserves the right to make improvements and/or changes without prior notification.



Heath Consultants Incorporated
Houston, TX
713/844-1300
Fax: 713/844-1309
1-800-HEATH-US
www.heathus.com

Heath Consultants LTD
London, Ontario - CANADA
519/659-1144
Fax: 519/453-2182
1-888-HEATH-CA
www.heathltd.com

Art's Truck & Equipment

3001 West Expressway 83, McAllen, TX 78503

Email: sales@artstrucks.com

Primary: 956-686-2326

Toll Free: 800-292-7007

Fax: 956-686-5179

<http://www.artstrucks.com>

Art's Trucks & Equipment has the largest equipment yard in South Texas, and is proud to have served the United States and Mexico for over 35 years.

2000 LEROI 200 CFM



Picture 1

Details

- | | | | |
|-------------------------|-------------|---------------------|------------|
| • Manufacturer | LEROI | • Model | 200 CFM |
| • Year | 2000 | • Hours | 260 |
| • Selling Option | AD | • Sale Price | 10500 |
| • Serial Number | 3535X775700 | • Engine Mfg | JOHN DEERE |

Description:

2000 LEROI 200 CFM, Air Compressor, John Deere Diesel Engine, Trailer Mounted, 260 hrs.

Indiantown Gas Company
Docket No. 030954
Response to Staff Data Request
February 5, 2004

Attachment: Response to question # 7

Ennis Equipment Sales

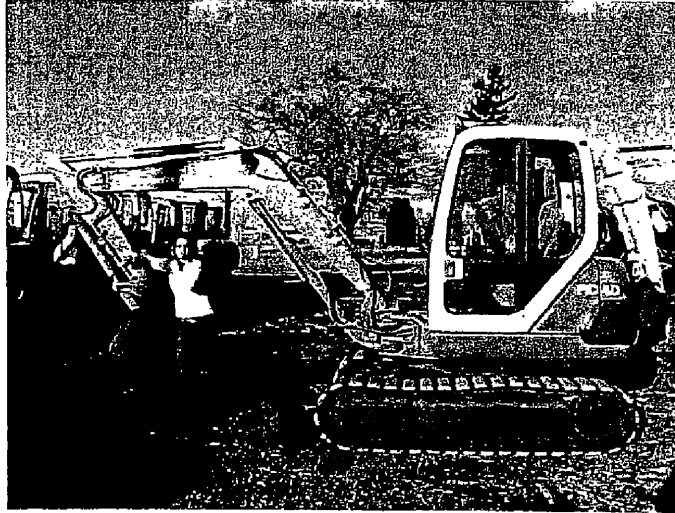
3208 N. Cunningham Avenue, Urbana, IL 61802

Email: ennisequipment@aol.com

Toll - Free: 888-595-6735

Fax: 217-384-5466

1995 KOMATSU PC40 7



Picture 1

Details

- | | | | |
|-------------------------|---------|-------------------------|--------|
| • Manufacturer | KOMATSU | • Model | PC40 7 |
| • Year | 1995 | • Selling Option | AD |
| • Sale Price | 16900 | • Serial Number | 25546 |
| • Capacity (lbs) | 9340 | | |

Description:

1995 KOMATSU PC40 7, ** WE'RE DEALIN CALL FOR BEST PRICE ** CAB, HEAT, STEEL W/ RUBBER 80

Indiantown Gas Company
Docket No. 030954
Response to Staff Data Request
February 5, 2004

Attachment: Response to question # 9

Indiantown Gas Company
Docket No. 030954-GU
Monthly Customer and Therm Totals 1998-2003
March 5, 2004

Rate Class	January		February		March		April		May		June		July		August		September		October		November		December		Total Therms	
	Customers	Therms	Customers	Therms	Customers	Therms	Customers	Therms	Customers	Therms	Customers	Therms	Customers	Therms	Customers	Therms	Customers	Therms	Customers	Therms	Customers	Therms	Customers	Therms		
1998	RS	622	18,050	625	19,250	625	17,058	626	15,004	624	13,760	622	12,857	622	10,584	622	11,281	622	10,274	628	10,488	626	11,887	634	14,167	164,480
	CS	23	7,896	23	7,821	24	7,238	24	8,235	24	7,848	23	8,864	22	4,828	23	6,131	23	6,020	24	6,073	24	6,724	25	7,321	82,899
	FIS	1	309,008	1	220,790	1	291,858	1	288,522	1	246,760	1	2,865	1	0	1	0	1	0	1	1,501	1	47,231	1	188,100	1,996,735
	LIS(SC)	1	140,876	1	175,759	1	513,240	1	304,080	1	383,848	1	438,756	1	518,952	1	182,443	1	165,258	1	239,654	1	358,653	1	63,656	3,496,275
	Total	647	475,830	650	423,720	651	828,384	652	615,841	650	662,116	647	462,442	646	534,364	647	199,855	647	181,552	654	257,716	652	424,295	661	273,244	5,340,369
1999	RS	630	15,510	630	14,545	635	15,808	634	14,479	637	13,885	633	13,386	632	11,551	627	11,868	630	11,475	635	11,761	637	15,154	633	14,285	163,877
	CS	25	9,112	24	8,932	24	8,603	24	8,255	26	7,248	26	8,640	26	5,527	26	6,001	26	6,797	27	6,807	28	8,806	28	9,231	89,959
	FIS	1	244,884	1	218,468	1	262,051	1	256,774	1	183,545	1	2,781	1	0	1	0	1	0	1	0	1	67,485	1	240,994	1,487,872
	LIS(SC)	1	93,893	1	92,784	1	1,080,953	1	709,512	1	1,155,146	1	1,252,088	1	736,341	1	502,863	1	1,730,037	1	795,298	1	547,847	1	420,388	9,107,752
	Total	657	363,209	656	332,729	661	1,367,505	660	978,020	665	1,369,606	661	1,278,575	660	753,419	655	520,832	658	1,743,309	664	813,866	667	640,292	663	684,898	10,849,360
2000	RS	636	18,085	635	20,273	637	14,185	633	14,235	635	13,783	636	12,414	629	11,107	627	12,048	626	10,731	630	11,660	631	14,160	631	14,761	167,452
	CS	28	9,611	28	11,788	28	9,686	28	11,126	28	8,825	28	10,288	27	7,377	28	8,904	27	6,996	29	9,008	29	10,545	29	10,026	112,191
	FIS	1	294,065	1	281,243	1	244,206	1	273,903	1	330,899	1	254,015	1	4,345	1	0	1	0	1	0	1	125,431	1	268,189	2,078,236
	LIS(SC)	1	716,012	1	858,108	1	1,106,758	1	734,487	1	1,101,236	1	404,929	1	185,135	1	472,246	1	549,409	1	348,289	1	234,288	1	158,859	6,881,747
	Total	666	1,037,773	665	1,171,422	667	1,374,836	663	1,033,781	665	1,454,714	666	681,846	658	217,964	657	491,198	655	567,136	661	369,957	662	384,404	662	452,815	9,237,626
2001	RS	631	24,215	627	16,823	627	13,435	634	13,353	629	14,155	631	9,157	626	10,321	631	12,186	632	11,527	634	12,139	633	14,873	631	21,702	173,886
	CS	29	12,274	25	11,074	25	11,216	28	10,531	28	11,617	28	11,957	28	7,670	27	10,307	27	11,589	26	10,808	26	8,653	27	14,235	132,731
	FIS	1	358,394	1	264,040	1	295,759	1	311,477	1	325,112	1	188,684	1	0	1	0	1	0	1	0	1	123,336	1	281,766	2,128,888
	LIS(SC)	1	148,269	1	171,918	1	881,347	1	727,781	1	591,717	1	286,256	1	95,931	1	110,185	1	206,857	1	243,055	1	615,985	1	449,981	4,609,292
	Total	662	543,152	654	453,655	654	1,201,757	664	1,063,142	659	942,601	661	456,054	656	113,922	660	132,678	661	229,973	662	265,802	661	763,857	660	767,684	6,944,277
2002	RS	634	16,970	633	16,099	630	14,388	626	10,131	635	12,551	635	11,920	632	10,060	632	12,545	632	10,575	630	10,290	633	14,350	633	14,350	139,839
	CS	26	15,061	26	9,167	26	14,855	25	14,233	26	8,057	27	10,508	27	9,283	28	8,898	27	8,314	27	8,788	25	12,100	25	11,073	118,073
	FIS	1	317,845	1	296,032	1	277,908	1	361,600	1	351,805	1	124,426	1	0	1	0	1	0	1	0	1	242,731	1	1,943,350	
	LIS(SC)	1	459,890	1	148,011	1	112,127	1	177,124	1	471,819	1	155,459	1	80,838	1	107,205	1	28,299	1	40,825	1	505,040	1	2,293,437	
	Total	662	898,756	661	498,299	658	419,278	653	563,088	663	844,132	664	302,313	661	110,181	662	128,436	661	45,188	659	60,797	660	774,221	663	1,495,699	
2002*	TS-1																						633	14,851		
	TS-2																						25	9,242		
	TS-3																						2	1,458		
	TS-4																						1	341,636		
	TS-5																						0			
	LIS (SC)																						1	188,586		
	Total																						662	555,773	5,051,472	
2003	TS-1	633	18,924	642	20,697	638	13,798	635	12,852	633	13,371	632	12,116	635	12,543	639	11,048	631	10,308	631	13,159	633	13,880	633	16,385	189,081
	TS-2	26	9,027	26	11,665	26	7,114	26	7,191	26	8,039	26	8,184	26	7,609	26	6,252	27	6,850	27	7,334	26	10,249	26	9,617	89,131
	TS-3	2	1,355	2	2,575	2	1,330	2	1,385	2	1,868	2	1,412	2	1,204	2	1,204	2	915	2	1,084	2	1,433	2	2,331	18,029
	TS-4	1	335,748	1	243,521	1	252,213	1	334,165	1	354,366	1	108,272	1	0	1	0	1	0	1	0	2	248,294	2	530,000	2,407,579
	TS-5	0	0	0	0	0	0	0	0	0	0	0	0	0	0	0	0	0	0	0	0	0	0	0	0	
	LIS (SC)	1	382,334	1	491,737	1	221,202	1	747,675	1	110,397	1	45,277	1	5,758	1	38,781	1	246,941	1	140,483	0	0	0	0	2,428,585
	Total	663	747,388	672	770,195	668	495,657	665	1,103,268	663	487,839	662	176,188	665	27,322	669	55,285	662	265,014	662	162,060	663	273,856	663	558,333	5,122,405

*December 2002 new rate classes implemented. Louis Dreyfus Citrus transfers from FIS to TS-4. No TS-5 customers. Cogen Plant remains Special Contract (SC) at prior LIS rate.

Indiantown Gas Company
Docket No. 030954
Response to Staff Data Request
February 5, 2004

Attachment: Response to question # 10

Indiantown Gas Company
Docket No. 030954-GU
2003 Forecast Variance Report
March 5, 2004

Rate Class	January		February		March		April		May		June		July		August		September		October		November		December		Total Therms		
	Customers	Therms	Customers	Therms	Customers	Therms	Customers	Therms	Customers	Therms	Customers	Therms	Customers	Therms	Customers	Therms	Customers	Therms	Customers	Therms	Customers	Therms	Customers	Therms			
2003 Forecast	TS-1	630	18,000	630	18,000	630	18,000	630	14,000	630	14,000	630	11,000	630	11,000	630	11,000	630	11,000	630	14,000	630	17,000	630	18,000	175,000	
	TS-2	25	5,917	25	5,917	25	5,917	25	5,917	25	5,917	25	5,917	25	5,917	25	5,917	25	5,917	25	5,917	25	5,917	25	5,917	71,004	
	TS-3	2	2,083	2	2,083	2	2,083	2	2,083	2	2,083	2	2,083	2	2,083	2	2,083	2	2,083	2	2,083	2	2,083	2	2,083	24,996	
	TS-4	1	275,000	1	275,000	1	275,000	1	275,000	1	275,000	1	75,000	1	0	1	0	1	0	1	0	1	275,000	1	275,000	2,000,000	
	TS-5	0	0	0	0	0	0	0	0	0	0	0	0	0	0	0	0	0	0	0	0	0	0	0	0	0	
	LIS (SC)	1	295,000	1	295,000	1	295,000	1	295,000	1	295,000	1	295,000	1	295,000	1	295,000	1	295,000	1	295,000	1	295,000	1	295,000	3,540,000	
	Total	659	596,000	659	596,000	659	596,000	659	592,000	659	592,000	659	389,000	659	314,000	659	314,000	659	314,000	659	317,000	659	595,000	658	596,000	5,811,000	
2003 Actual	TS-1	633	18,924	642	20,697	638	13,798	635	12,852	633	13,371	632	12,116	635	12,543	639	11,048	631	10,308	631	13,159	633	13,880	633	16,385	168,081	
	TS-2	26	9,027	26	11,665	26	7,114	26	7,191	26	8,039	26	8,184	26	7,609	26	6,252	27	6,850	27	7,334	26	10,249	26	9,617	99,131	
	TS-3	2	1,355	2	2,575	2	1,330	2	1,385	2	1,866	2	1,339	2	1,412	2	1,204	2	915	2	1,084	2	1,433	2	2,331	18,029	
	TS-4	1	335,748	1	243,521	1	252,213	1	334,185	1	354,366	1	109,272	1	0	1	0	1	0	1	0	2	248,294	2	530,000	2,407,579	
	TS-5	0	0	0	0	0	0	0	0	0	0	0	0	0	0	0	0	0	0	0	0	0	0	0	0	0	
	LIS (SC)	1	382,334	1	491,737	1	221,202	1	747,675	1	110,397	1	45,277	1	5,758	1	36,781	1	246,941	1	140,483	0	0	0	0	0	2,428,585
	Total	663	747,388	672	770,195	668	495,657	665	1,103,288	663	487,639	662	176,188	665	27,322	669	55,285	662	265,014	662	162,060	663	273,856	663	558,333	5,122,405	
Variance (Forecast vs. Actual)	TS-1	-3	-924	-12	-2,697	-8	4,202	-5	1,148	-3	629	-2	-1,116	-5	-1,543	-9	-48	-1	682	-1	841	-3	3,120	-3	1,615	5,919	
	TS-2	-1	-3,110	-1	-5,748	-1	-1,197	-1	-1,274	-1	-2,122	-1	-2,267	-1	-1,692	-1	-335	-2	-833	-2	-1,417	-1	-4,332	-1	-3,700	-28,127	
	TS-3	0	728	0	-492	0	753	0	698	0	417	0	744	0	671	0	879	0	1,168	0	999	0	650	0	-248	6,967	
	TS-4	0	-60,748	0	31,479	0	22,787	0	-59,185	0	-79,366	0	-34,272	0	0	0	0	0	0	0	0	-1	26,706	-1	-255,000	-407,579	
	TS-5	0	0	0	0	0	0	0	0	0	0	0	0	0	0	0	0	0	0	0	0	0	0	0	0	0	
	LIS (SC)	0	-87,334	0	-196,737	0	73,798	0	-452,675	0	184,603	0	249,723	0	289,242	0	258,219	0	48,059	0	154,517	1	295,000	1	295,000	1,111,415	
	Total	-4	-151,388	-13	-174,195	-9	100,343	-6	-511,268	-4	104,161	-3	212,812	-6	286,678	-10	258,715	-3	48,986	-3	154,940	-4	321,144	-4	37,667	688,595	