

(See DNS 09443-05 2/11/05)  
11-22-05  
**DECLASSIFIED**

DAVANT / TBT

01/07/04

ELEANOR GORDON should arrive at DAVANT / TBT on January 11, 2004.

2 barges	PIT	3,480.16
3 barges	SCANCARBON	4,294.96
2 barges	SLAG	3,293.72
1 barge	STD-H	1,558.20
17 barges	ZIG	29,547.20
25		42,174.24

The commodity was supplied by:

REED MINERALS	3,293.72
ARI COAL	29,547.20
AMERICAN COAL	3,480.16
PIGMAN	1,558.20
SCANCARBON	4,294.96
	42,174.24

FLORIDA PUBLIC SERVICE COMMISSION  
DOCKET  
NO. 031033-EI EXHIBIT NO. 70  
COMPANY/ CSX  
WITNESS:  
DATE: 5/27-28/04 + 6/10/04

The commodity was loaded at:

CORA	29,547.20
DEKOVEN	1,558.20
MID-COAST	3,293.72
PLACER	1,559.56
POWHATAN	3,480.16
TTI	2,735.40
	42,174.24

She has the following barges in tow:

CUSTOMER	BARGE	COVER/		TONS	TYPE	LDDOCK	SUPPLIER	LDDATE
		CLS	STACKED RM					
REED MINERALS	MST 165	B		1,587.57	SLAG	MID-COAST	REED MINERALS	12/19/03
REED MINERALS	MST 422	A		1,706.15	SLAG	MID-COAST	REED MINERALS	12/22/03
SCAN CARBON	MM 9613	A		1,394.95	SCAN	TTI	SCANCARBON	12/23/03
SCAN CARBON	MST 425	A		1,559.56	SCAN	PLACER	SCANCARBON	12/23/03
SCAN CARBON	MST 448	A	50	1,340.45	SCAN	TTI	SCANCARBON	12/23/03
TAMPA ELECTRIC	MM 9614	A		1,816.90	ZIG	CORA	ARI COAL	01/04/04
TAMPA ELECTRIC	MM 9635	A		1,865.80	ZIG	CORA	ARI COAL	01/04/04
TAMPA ELECTRIC	MM 9644	A		1,744.00	ZIG	CORA	ARI COAL	01/04/04
TAMPA ELECTRIC	MM 9710	A		1,853.30	ZIG	CORA	ARI COAL	01/04/04
TAMPA ELECTRIC	MST 306	C		1,558.20	STD-H	DEKOVEN	PIGMAN	12/23/03
TAMPA ELECTRIC	MST 428	A		1,362.30	ZIG	CORA	ARI COAL	01/04/04
TAMPA ELECTRIC	MST 474	C	50	1,801.40	ZIG	CORA	ARI COAL	01/04/04
TAMPA ELECTRIC	MST 482	C		1,711.00	ZIG	CORA	ARI COAL	01/04/04
TAMPA ELECTRIC	MST 529	A		1,600.80	ZIG	CORA	ARI COAL	01/04/04
TAMPA ELECTRIC	MST 542	A		1,591.70	ZIG	CORA	ARI COAL	01/04/04
TAMPA ELECTRIC	MST 600	C		1,856.40	ZIG	CORA	ARI COAL	01/04/04
TAMPA ELECTRIC	MST 616	C		1,678.90	ZIG	CORA	ARI COAL	01/04/04
TAMPA ELECTRIC	MST 617	C		1,724.00	ZIG	CORA	ARI COAL	01/04/04
TAMPA ELECTRIC	MST 621	C		1,774.20	ZIG	CORA	ARI COAL	01/04/04
TAMPA ELECTRIC	MST 622	C		1,765.20	ZIG	CORA	ARI COAL	01/04/04
TAMPA ELECTRIC	MST 624	C		1,730.30	ZIG	CORA	ARI COAL	01/04/04
TAMPA ELECTRIC	MST 635	C		1,730.30	ZIG	CORA	ARI COAL	01/04/04
TAMPA ELECTRIC	MST 824	A		1,766.48	PIT	POWHATAN	AMERICAN COAL	12/17/03
TAMPA ELECTRIC	MST 825	A		1,713.68	PIT	POWHATAN	AMERICAN COAL	12/17/03
TAMPA ELECTRIC	MST 857	A		1,740.70	ZIG	CORA	ARI COAL	01/04/04
				42,174.24				

DOCUMENT NUMBER - DATE

TECO Barge Line

Steven D. Johnson

TAMPA ELECTRIC COMPANY  
DOCKET NO. 031033-EI  
OPC'S 4<sup>TH</sup> REQUEST FOR PODS

**From:** Steve Johnson  
**To:** TOWLETTER  
**Date:** 1/20/04 5:02PM  
**Subject:** ELEANOR GORDON S/B TOW LETTER

**DAVANT / TBT**

01/20/04

ELEANOR GORDON should arrive at DAVANT / TBT on January 26, 2004.

9 barges	CARBOEX	14,037.30
5 barges	PIT	9,507.52
11 barges	STD-H	20,690.30
1 barges	ZIG	1,658.30
26		45,893.42

The commodity was supplied by:

AEI COAL	1,658.30
AMERICAN COAL	9,507.52
CARBOEX	14,037.30
PEABODY	6,354.40
PIGMAN	14,335.90
	45,893.42

The commodity was loaded at:

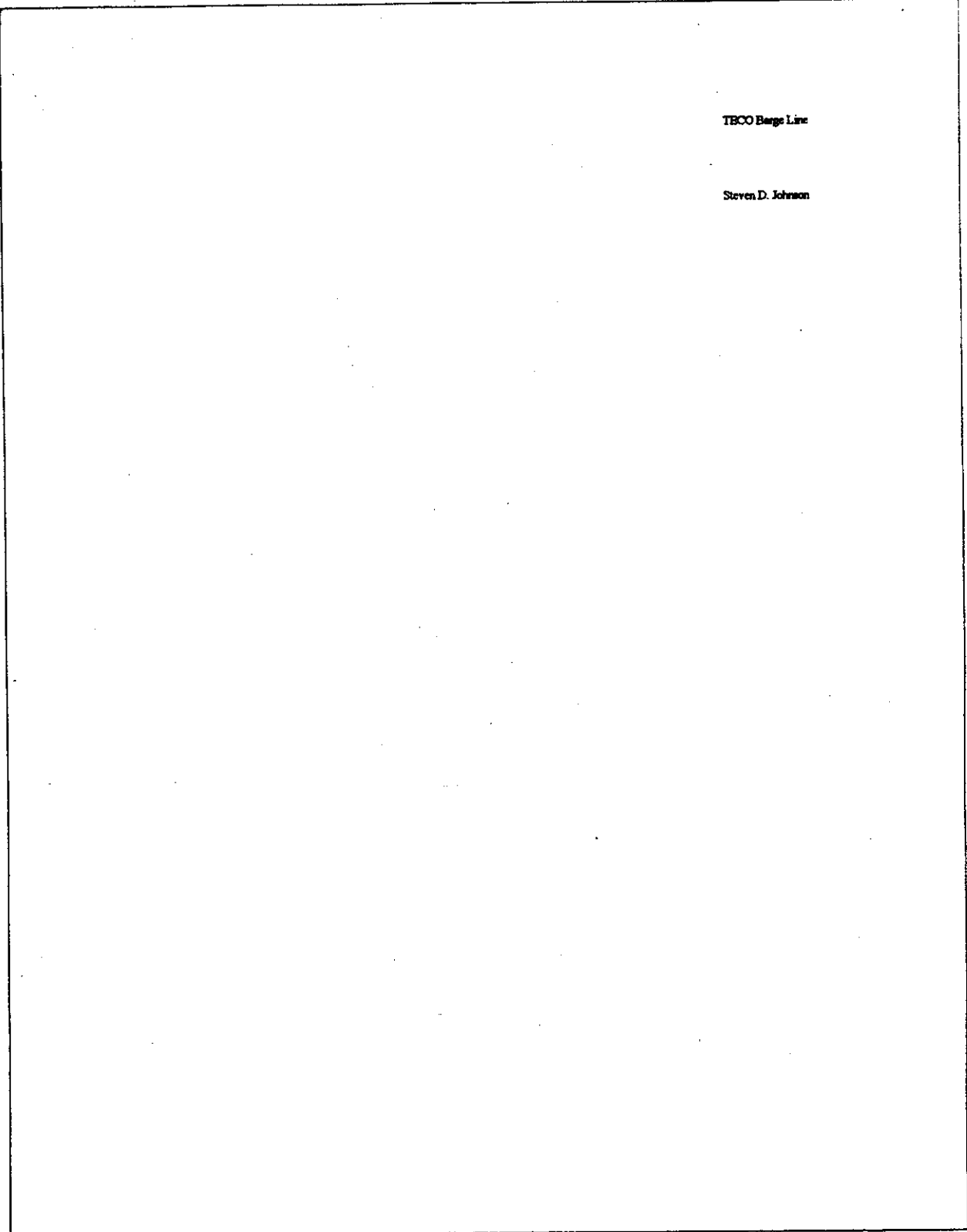
CASEYVILLE	2,179.00
CORA	15,695.60
DEKOVEN	12,156.90
POWHATAN	9,507.52
SHAWNEETOWN	6,354.40
	45,893.42

She has the following barges in tow:

CUSTOMER	BARGE	COVER/ CLS STACKED RM	TONS	TYPE	LDDOCK	SUPPLIER	LDDATE
CARBOEX INTERNATIONAL	MST 142	C	1,502.80	CARBO	CORA	CARBOEX	01/11/04
CARBOEX INTERNATIONAL	MST 293	C	1,607.30	CARBO	CORA	CARBOEX	01/07/04
CARBOEX INTERNATIONAL	MST 300	C	1,562.30	CARBO	CORA	CARBOEX	01/07/04
CARBOEX INTERNATIONAL	MST 301	C	1,512.00	CARBO	CORA	CARBOEX	01/11/04
CARBOEX INTERNATIONAL	MST 334	C	1,535.90	CARBO	CORA	CARBOEX	01/07/04
CARBOEX INTERNATIONAL	MST 358	C	1,510.70	CARBO	CORA	CARBOEX	01/11/04
CARBOEX INTERNATIONAL	MST 360	C	1,507.30	CARBO	CORA	CARBOEX	01/11/04
CARBOEX INTERNATIONAL	MST 479	C	1,642.20	CARBO	CORA	CARBOEX	01/11/04
CARBOEX INTERNATIONAL	MST 623	C	1,656.80	CARBO	CORA	CARBOEX	01/07/04
TAMPA ELECTRIC	MM 9615	A	2,310.20	STD-H	DEKOVEN	PIGMAN	01/05/04
TAMPA ELECTRIC	MM 9632	A	2,090.46	PIT	POWHATAN	AMERICAN COAL	01/12/04
TAMPA ELECTRIC	MM 9649	A	2,198.70	STD-H	DEKOVEN	PIGMAN	01/07/04
TAMPA ELECTRIC	MM 9701	A	2,285.90	STD-H	DEKOVEN	PIGMAN	01/07/04
TAMPA ELECTRIC	MST 315	A	1,658.30	ZIG	CORA	AEI COAL	01/04/04
TAMPA ELECTRIC	MST 319	C	1,606.00	STD-H	SHAWNEETOWN	PEABODY	12/23/03
TAMPA ELECTRIC	MST 333	C	1,542.60	STD-H	SHAWNEETOWN	PEABODY	01/14/04
TAMPA ELECTRIC	MST 370	B	1,670.00	STD-H	SHAWNEETOWN	PEABODY	01/12/04
TAMPA ELECTRIC	MST 371	B	1,709.00	STD-H	DEKOVEN	PIGMAN	01/17/04
TAMPA ELECTRIC	MST 384	B	1,758.20	STD-H	DEKOVEN	PIGMAN	01/10/04
TAMPA ELECTRIC	MST 485	A	1,835.27	PIT	POWHATAN	AMERICAN COAL	01/12/04
TAMPA ELECTRIC	MST 502	A	1,535.80	STD-H	SHAWNEETOWN	PEABODY	01/12/04
TAMPA ELECTRIC	MST 642	B	1,894.90	STD-H	DEKOVEN	PIGMAN	01/09/04
TAMPA ELECTRIC	MST 753	A	1,758.79	PIT	POWHATAN	AMERICAN COAL	01/13/04
TAMPA ELECTRIC	MST 830	A	1,949.18	PIT	POWHATAN	AMERICAN COAL	01/13/04
TAMPA ELECTRIC	MST 848	A	1,873.82	PIT	POWHATAN	AMERICAN COAL	01/12/04
TAMPA ELECTRIC	MST 862	A	2,179.00	STD-H	CASEYVILLE	PIGMAN	01/12/04
			45,893.42				

TECO Barge Line

Steven D. Johnson



TBCO Barge Line

Steven D. Johnson