

ORIGINAL

State of Florida



Public Service Commission

CAPITAL CIRCLE OFFICE CENTER • 2540 SHUMARD OAK BOULEVARD
TALLAHASSEE, FLORIDA 32399-0850

RECEIVED FPSC
APR 27 AM 10:28

-M-E-M-O-R-A-N-D-U-M-

COMMISSION
CLERK

DATE: April 27, 2005

TO: Kay B. Flynn, Chief of Records, Division of the Commission Clerk & Administrative Services

FROM: Jennifer A. Rodan, Attorney, Office of the General Counsel JAR

RE: Docket No. 041413-EU - Joint petition for approval of amended territorial agreement in Levy and Marion Counties by Central Florida Electric Cooperative, Inc. and Progress Energy Florida, Inc.

Please include the attached Department of Transportation maps in the docket file.

cc: Division of Economic Regulation (Windham, Breman)

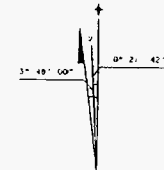
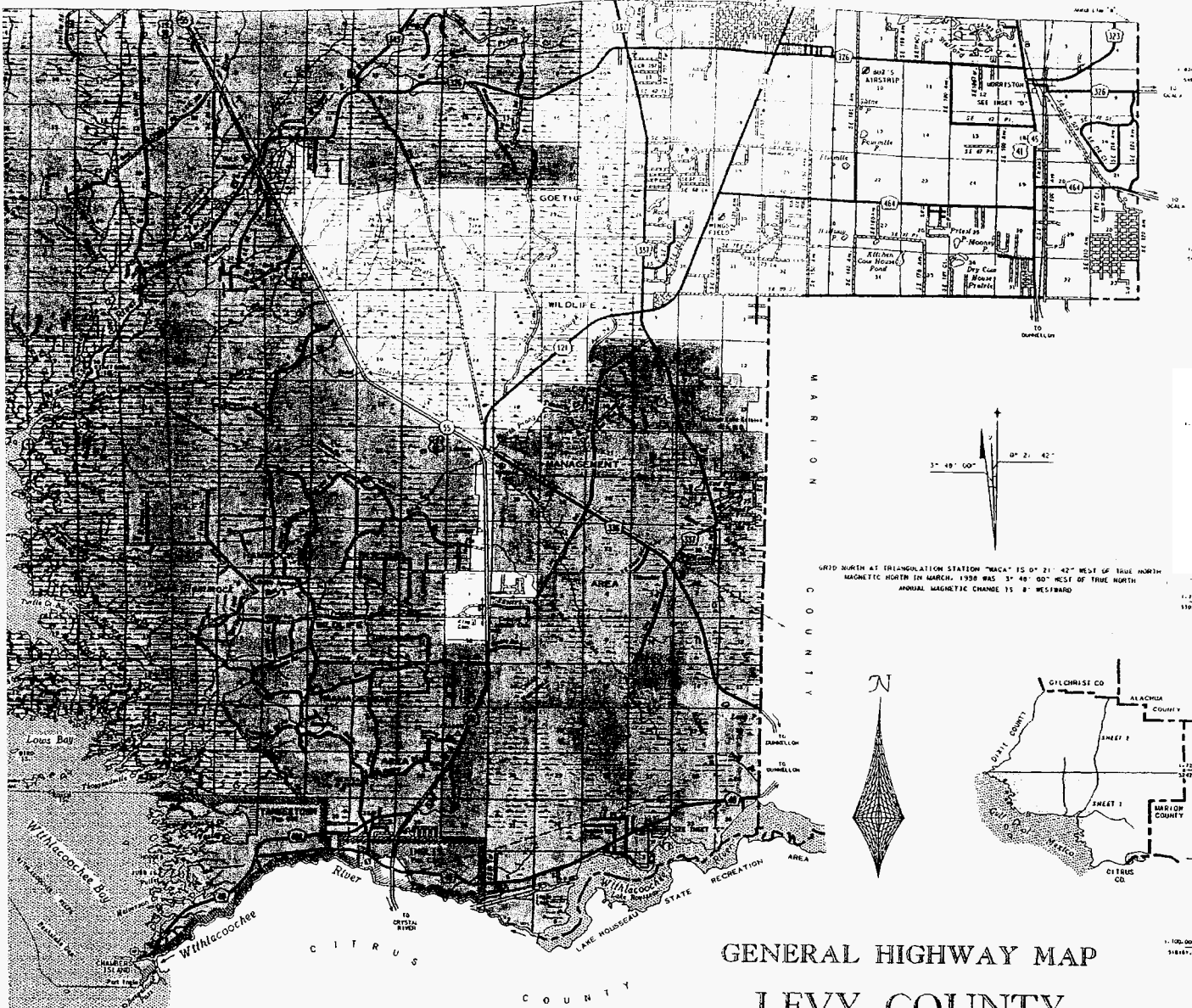
- CMP _____
- COM _____
- CTR _____
- ECR _____
- GCL _____
- OPC _____
- MMS _____
- RCA _____
- SCR _____
- SEC 1
- OTH _____

DOCUMENT NUMBER-DATE

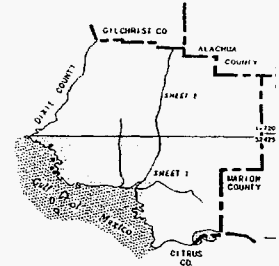
04092 APR 27 05

FPSC-COMMISSION CLERK

R 15 E P I C E R 17 E R 19 E R 19 E



GRID NORTH AT TRIANGULATION STATION "MCA" IS 0° 21' 42" WEST OF TRUE NORTH
 MAGNETIC NORTH IN MARCH, 1988 WAS 3° 48' 00" WEST OF TRUE NORTH
 ANNUAL MAGNETIC CHANGE IS 8" WESTWARD



GENERAL HIGHWAY MAP LEVY COUNTY FLORIDA

PREPARED BY THE
 SURVEYING AND MAPPING OFFICE
 FOR THE
 DIVISION OF TRANSPORTATION PLANNING
 STATE OF FLORIDA
 DEPARTMENT OF TRANSPORTATION
 IN COOPERATION WITH THE
 U.S. DEPARTMENT OF TRANSPORTATION
 FEDERAL HIGHWAY ADMINISTRATION



SCALE FOR INSETS

APRIL, 1998

COPYRIGHT FLORIDA DEPARTMENT OF TRANSPORTATION 1998

REVISIONS	
FEATURE	DATE
State Department Road	April, 1998

FOR PRICE AND
 AVAILABILITY CONTACT:
 STATE OF FLORIDA
 DEPARTMENT OF TRANSPORTATION
 MAPS AND PUBLICATIONS
 TALLAHASSEE, FL 32309-0001
 PHONE (904) 414-6200

The map was compiled from U.S.G. Geological Survey topographic maps and aerial photography from 1988, 1992, 1996, 1998, 2000 and 2002. Road features were updated to 1997 and other map data.

This map was compiled using interactive cartographic graphic techniques.

The map is presented on the Transverse Mercator projection. West Zone, 2 degree system of plane coordinates.

The road and station symbols on shown on this map have not necessarily changed the presence in a depot or the facility. (It may be only a point designated for the receipt or delivery of freight, such as a platform or siding.)

Local road alignments in Unimproved Areas and Residential Areas Under Development are not indicated.

In congested areas other roads are indicated by a single line only. For additional details prepared for this county.

No attempt has been made to show all changes since last edition.

City populations are taken from the U.S. Census for 1990.

In 1990, the population of Levy County was 25,921. There are 1,100 square miles in the county.

No checks made for the basic cartographic errors. Original data tapes used in work of the United States Government.

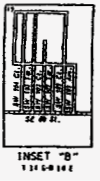
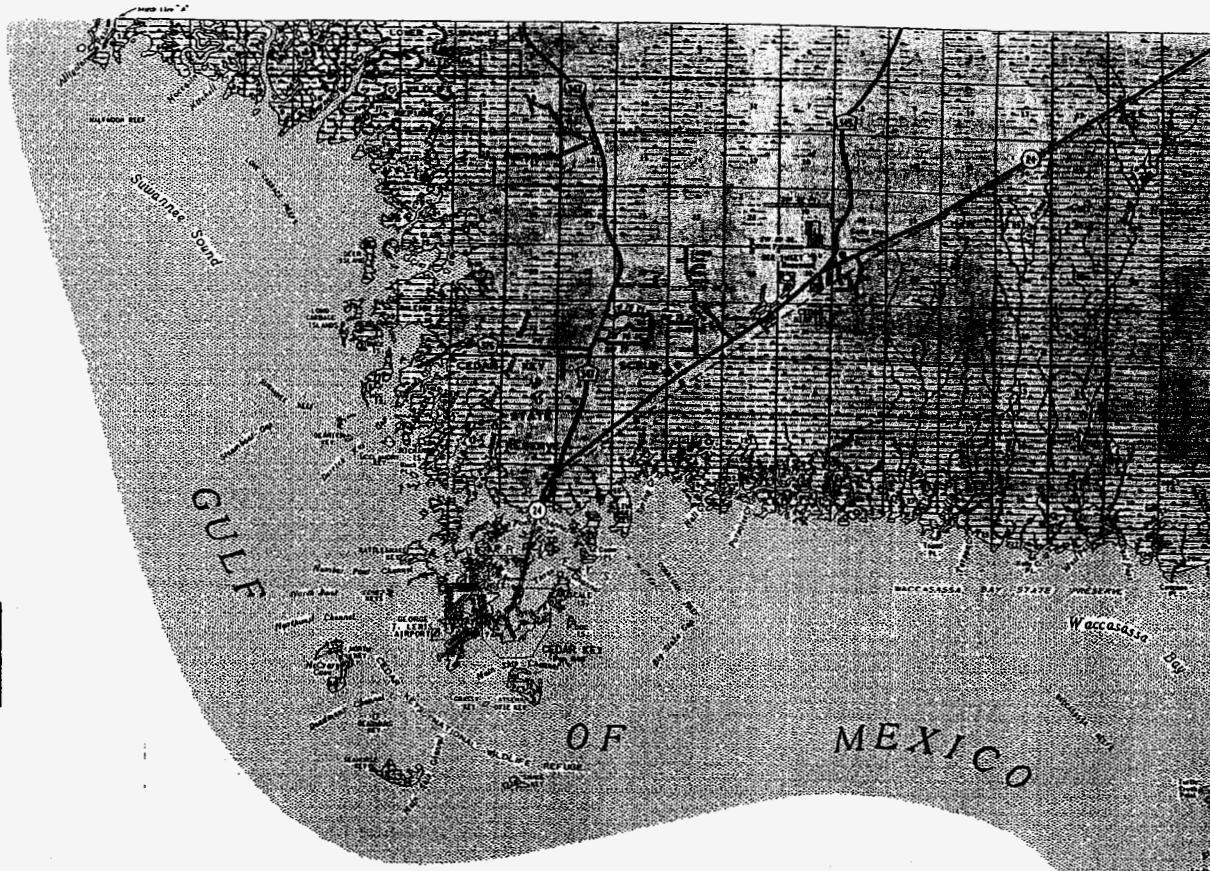
Most of the names are in the public domain. The map was compiled and published using public domain data and is copyrighted to protect proprietary information for profit.

Permission to copy or reproduce this map may be obtained by the Surveying and Mapping Office, Department of Transportation, Tallahassee, Florida 32309-0001.



R 15 E P I C E R 17 E R 19 E R 19 E

16,000 FT
4,876.8 M
T 14 S
16,000
4,876.8
T 15 S
0.000
0.000
16,000
4,876.8
T 16 S
0.000
0.000
16,000
4,876.8
T 17 S
0.000
0.000
16,000
4,876.8
T 18 S

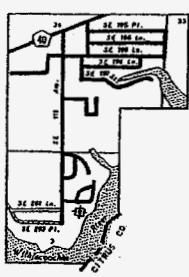


TERRITORIAL AGREEMENT
PROGRESS ENERGY CORP. SERVICE AREA
CENTRAL FLORIDA ELECTRIC COOP. SERVICE AREA
NOT PART OF THIS AGREEMENT

Exhibit A

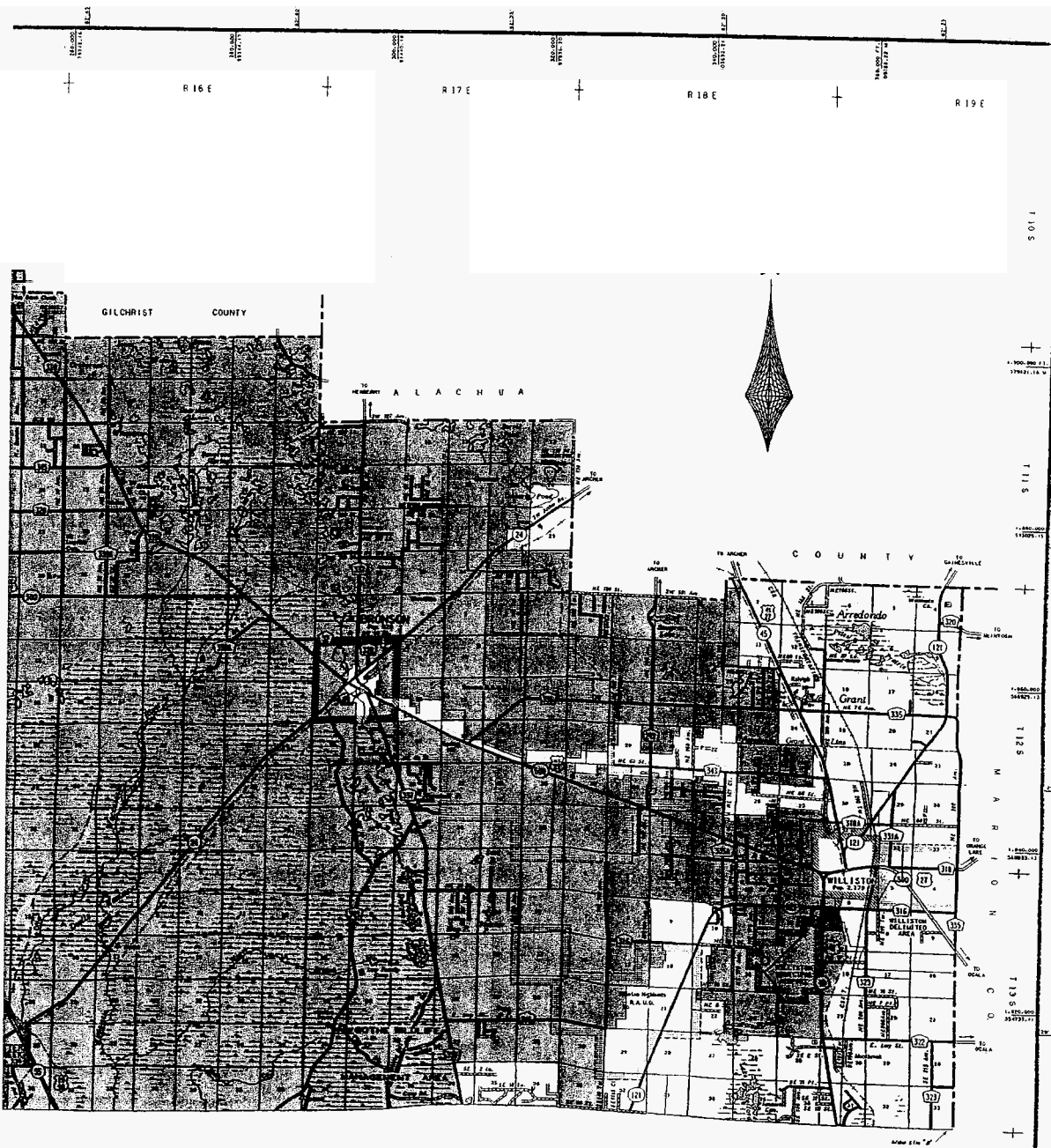
GENERAL LEGEND

- DIVIDED HIGHWAY
- IMPROVED SURFACED ROAD
- SOIL, GRAVEL OR SHELL SURFACED ROAD
- GRADED AND UNIMPROVED ROAD
- UNIMPROVED ROAD
- PRIVATE ROAD
- STREETS IN INSET OR DELIMITED AREAS
- U.S. ROUTE
- STATE ROUTE
- COUNTY ROUTE
- RAILROAD
- ABANDONED RAILROAD
- RAILROAD STATION
- GRADE CROSSING
- COMMERCIAL OR MUNICIPAL AIRPORT
- LANDING AREA OR STRIP
- CANAL OR DRAINAGE DITCH
- NARROW STREAM
- WIDE STREAM
- DAM OR SPILLWAY WITH LOCK
- LAKE, RESERVOIR OR POND
- INTERMITTENT POND
- MARSH OR SWAMP
- HIGHWAY BRIDGE
- COUNTY BOUNDARY LINE
- CIVIL TOWNSHIP BOUNDARY
- LAND GRANT LINE
- LAND SECTION LINE
- FOREST OR PARK BOUNDARY
- LOCATION OF INSET BOUNDARY WITHIN MAP
- COUNTY SEAT
- OTHER CITY OR VILLAGE
- CORPORATE LIMITS
- DELIMITED AREA
- RESIDENTIAL AREA UNDER DEVELOPMENT
- WAYSIDE PARK OR SMALL PARK
- PARK WITH BOAT RAMP
- BOAT RAMP
- MUSEUM
- POST OFFICE
- CHURCH
- CEMETERY
- CHURCH AND CEMETERY
- MINE OR STRIP MINE
- GAME CHECKING STATION
- LOOKOUT TOWER
- SANITARY FALL
- CORRECTIONAL INSTITUTION
- POWER PLANT
- POWER SUBSTATION
- COMMUNICATIONS FACILITY
- LOCKED GATE OR FENCE
- TRIANGULATION STATION
- LOCATION OF SYMBOL

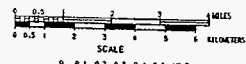
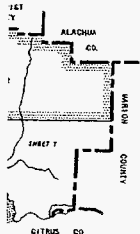


ONE TO THE SCALE OF THIS MAP THE STATE OF FLORIDA DEPARTMENT OF RECONSTRUCTION ACCEPTS NO RESPONSIBILITY FOR INACCURACIES OR OMISSIONS IN THIS DOCUMENT OR FOR CONSEQUENCES OF INTERPRETATION, AND OTHER RELATED DATA.

CITY BOUNDARIES ARE PLOTTED USING ALL AVAILABLE DESCRIPTIONS AS SET BY THE FLORIDA DEPARTMENT OF RECONSTRUCTION. CANTON ACCEPTS RESPONSIBILITY FOR INACCURACIES RESULTING FROM UNRELIABLE OR INCOMPLETE DATA.



GENERAL HIGHWAY MAP LEVY COUNTY FLORIDA



CITY BOUNDARIES ARE PLOTTED USING ALL AVAILABLE INFORMATION AT DATE OF REVISION. THE FLORIDA DEPARTMENT OF TRANSPORTATION CANNOT ACCEPT RESPONSIBILITY FOR INACCURACIES RESULTING FROM UNREPRESENTATIVE OR CHANGING DATA.

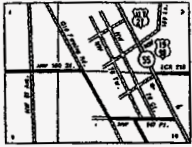
SCALE FOR INSETS
APRIL, 1996
COPYRIGHT FLORIDA DEPARTMENT OF TRANSPORTATION 1996

ONE TO THE SCALE OF THIS MAP THE STATE OF FLORIDA DEPARTMENT OF TRANSPORTATION ASSUMES NO RESPONSIBILITY FOR INACCURACIES OF ROAD ALIGNMENTS, CONTOURINGS OF INTERSECTIONS, AND OTHER RELATED DATA.

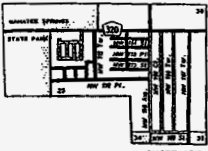
REVISIONS	
REVISIONS	DATE
State Highway Route	June 1988
SR 42, SR 43, SR 318	June 1990

FOR PRICE AND AVAILABILITY CONTACT:
STATE OF FLORIDA
DEPARTMENT OF TRANSPORTATION
MAP AND PUBLICATION
DIVISION
TALLAHASSEE, FL 32304-5040
PHONE 904-437-4000

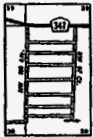
R 11 E † R 12 E † R 13 E † R 14 E † R 15 E



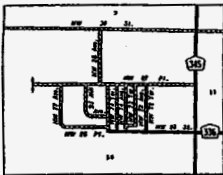
INSET "E"
1133-2321



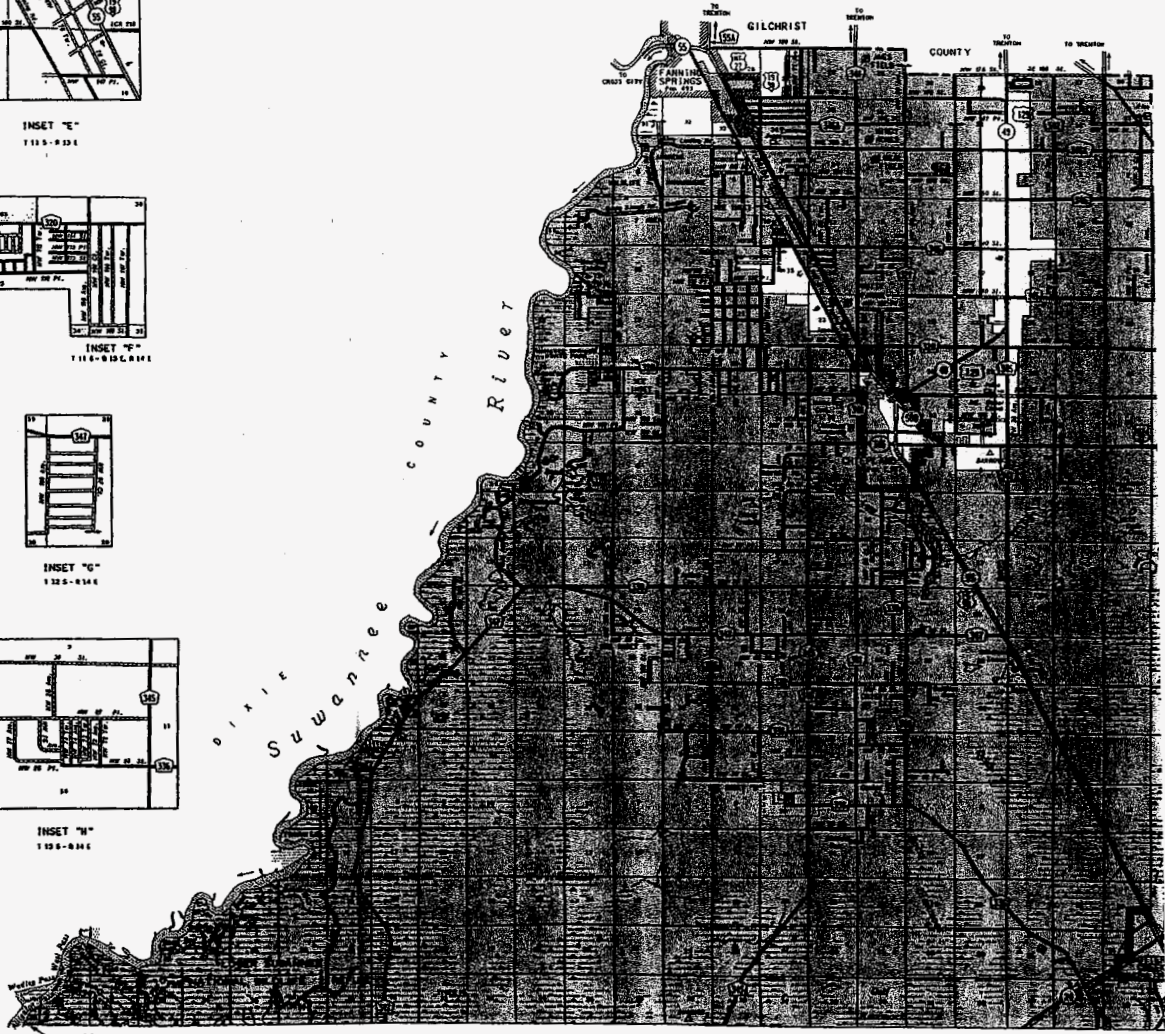
INSET "F"
1118-2130, 2131



INSET "G"
1325-2144



INSET "H"
1325-2144



TERRITORIAL AGREEMENT
 PROGRESS ENERGY CORP. SERVICE AREA
 CENTRAL FLORIDA ELECTRIC COOP. SERVICE AREA
 NOT PART OF THIS AGREEMENT



Exhibit A

R 11 E † R 12 E † R 13 E † R 14 E † R 15 E

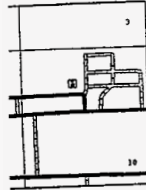


SUMTER

COUNTY

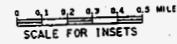
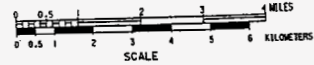
GENERAL HIGHWAY MAP MARION COUNTY

FLORIDA



"Q"
12 E

DU TO THE SCALE OF THIS MAP THE STATE OF FLORIDA DEPARTMENT OF TRANSPORTATION ASSUMES NO RESPONSIBILITY FOR INACCURACIES IN ROAD ALIGNMENTS, CONFIGURATION OF INTERSECTIONS, AND OTHER RELATED DATA.



NOVEMBER, 1995

COPYRIGHT FLORIDA DEPARTMENT OF TRANSPORTATION 1995

REVISIONS	
FEATURES	DATE
State Maintained Roads	December, 1995
Interchange and numbers	June, 1997

FOR PRICE AND AVAILABILITY CONTACT:
STATE OF FLORIDA
DEPARTMENT OF TRANSPORTATION
MAPS AND PUBLICATION
TALLAHASSEE, FL. 32395-0450
PHONE (850) 414-4000

Exhibit A

TERRITORIAL AGREEMENT

PROGRESS ENERGY CORP. SERVICE AREA

CENTRAL FLORIDA ELECTRIC COOP. SERVICE AREA

NOT PART OF THIS AGREEMENT



R 22 E

Exhibit A

