

Interexchange Company Regulatory Assessment Fee Return

ORIGINAL

STATUS:

Florida Public Service Commission

(See Filing Instructions on Back of Form)

- Actual Return
- Estimated Return
- Amended Return

PERIOD COVERED
01/01/2006 to 06/30/2006

2ndal Records
cket # 060466-T1

TJ009 - 05-0-R
Legacy Long Distance International, Inc.
10833 Valley View Street Suite 150
Cypress, CA 90630

POST DATE
676 AUG 24 2006

FOR PSC USE ONLY

Check # 1522 PSC

\$ 501.00 AM 10-001
003001

\$ COMMISSION 06-03-001
CLERK 004011

\$ I

Postmark Date 8-21-06

Initials of Preparer RT

Please Complete Below If Official Mailing Address Has Changed

(Name of Company)

(Address)

(City/State)

(Zip)

LINE MPNO	ACCOUNT CLASSIFICATION	FLORIDA GROSS OPERATING REVENUE	INTRASTATE REVENUE
0MI	Long Distance Services	\$ 8,941	\$ 3,593
2	Access Services		
TR3	Private Line Services		
4	Leased Facilities & Circuits Services		
CR5	Miscellaneous Services		
6	TOTAL Telephone Services	\$ 8,941	\$ 3,593
7	LESS: Amounts Paid to Telecommunications Companies ⁽¹⁾	()	()
8	TOTAL REVENUES For Regulatory Assessment Fee Calculation		\$ 3,593
9	Regulatory Assessment Fee Due (Multiply Line 8 by 0.0020)		\$ 7.19
SCR0	Penalty for Late Payment (see "3. Failure to File by Due Date" on back)		
11	Interest for Late Payment (see "3. Failure to File by Due Date" on back)		
SCA2	Extension Payment Fee (see "4. Extension" on back)		
8	TOTAL AMOUNT DUE (\$50 MINIMUM)		\$ 50.00

OTH (1) These amounts must be intrastate only and must be verifiable (see "2. Fees" on back).
(2) Regardless of the gross operating revenue of a company, a minimum annual regulatory assessment fee of \$50 shall be imposed as provided in Section 364.336, Florida Statutes.

CURRENT COMPANY STATUS

- Facilities-Based Carrier
- Reseller
- Call Aggregator
- Alternative-Operator Service
- Rebiller
- Other: _____

BILLING INFORMATION

Complete below if billing agent is other than yourself.

(Name)

(Address: City/State/Zip)

(Telephone)

What is the total amount of customer deposits collected?

Amount: \$ _____ for 2006

What is the total amount of bond held (if applicable)?

Amount: \$ _____ Expires: _____

COMPANY INFORMATION

Do you lease telecommunications' facilities? YES NO

If YES, who do you lease facilities from? Name: _____

Address: _____

I, the undersigned owner/officer of the above-named company, have read the foregoing and declare that to the best of my knowledge and belief, the above information is a true and correct statement. I am aware that pursuant to Section 837.06, Florida Statutes, whoever knowingly makes a false statement in writing with the intent to mislead a public servant in the performance of his/her duty shall be guilty of a misdemeanor of the second degree.

(Signature of Company Official)

Chairman, President, Treasurer

(Title)

(Date)

Curtis A. Brown

(Preparer of Form - Please Print Name)

Telephone Number: 800-670-0015

Fax Number 800-700-1116

DOCUMENT NUMBER-DATE
F.E.I.No. 77-0438268

07827 AUG 25 06



August 18, 2006
Via Overnight Delivery

210 N. Park Ave.
Winter Park, FL
32789

P.O. Drawer 200
Winter Park, FL
32790-0200

Tel: 407-740-8575
Fax: 407-740-0613
tmi@tminc.com

Fiscal Services
Florida Public Service Commission
2540 Shumard Oak Boulevard
Tallahassee, FL 32399-0850

RE: Legacy Long Distance International, Inc
FL IXC Regulatory Assessment Fee (Jan-Jun, current year)
For the six months ending June 30, 2006
Utility Number: TJ009

Dear Sir or Madam:

Enclosed please find the FL IXC Regulatory Assessment Fee (Jan-Jun, current year) for the six months ending June 30, 2006, filed on behalf of Legacy Long Distance International, Inc. A check in the amount of \$50.00 is enclosed to cover the remittance fees due.

Please acknowledge receipt of this filing by date-stamping the extra copy of this cover letter and returning it to me in the self-addressed, stamped envelope provided for that purpose.

Questions regarding this filing should be directed to my attention at 407-740-8575. Thank you for your assistance in this matter.

Sincerely,

Kimberly N. Gender
Compliance Reporting Specialist

cc: Curtis A. Brown - Legacy Long Distance International, Inc
file: Legacy Long Distance International, Inc - Reporting - Florida

Call 1-800-PICK-UPS® (1-800-742-5877) or visit UPS.com®

For UPS Next Day Air services, there is no weight limit for envelopes containing correspondence, urgent documents, and electronic media. When a UPS Next Day Air service is selected, UPS Express Envelopes containing items other than those listed above are subject to the corresponding rates for the applicable weight.

For UPS Worldwide Express, the UPS Express Envelope may be used only for documents of no commercial value. There is no limit on the weight or number of pages you can enclose.

Do not use UPS 2nd Day Air services to send letters weighing over 13 ounces in this envelope. For UPS 2nd Day Air services, UPS Express Envelopes weighing one pound or more are subject to the corresponding rates for the applicable weight.

Do not send cash or cash equivalent.

FL PUBLIC SERVICE COMMISSION
2540 SHUMARD OAK BLVD

TALLAHASSEE FL 32399-7019

P: ORANGE S: OUT I:

07B-3442

1Z375062136950 3590

1500

FGH9SJF FLTAL113 Aug 21 06:53:25 2006
TB 3290 HIP 5.10.3 INT4420

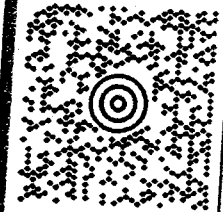
SHIPPING DEPARTMENT
(407) 740-8575
TECHNOLOGIES MANAGEMENT, INC.
210 N. PARK AVE.
WINTER PARK FL 32789-3814

LTR 1 OF 1

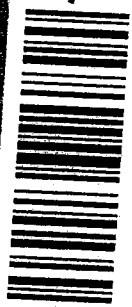
Apply shipping documents on 1

SHIP TO:

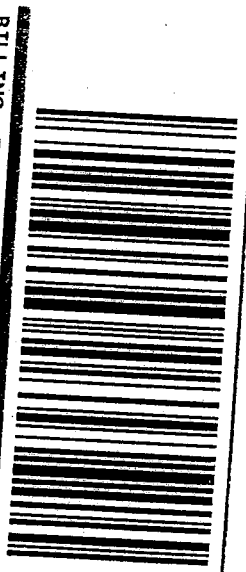
FISCAL SERVICES
FL PUBLIC SVC COMMISSION
DIVISION OF COMMUNICATION
2540 SHUMARD OAK BOULEVARD
TALLAHASSEE FL 32399-7019



FL 323 0-01



UPS NEXT DAY AIR SAVER 1P
TRACKING #: 1Z 375 062 13 6950 3590



BILLING: P/P

REF 1: 0750

004 7.0.17 UPS Thermal 2 57.0R 07/2006



International Shipping Notice: Carriage hereunder may be subject to the rules relating to liability and other terms and/or conditions established by the Convention for the Unification of Certain Rules Relating to International Carriage by Air (the "Warsaw Convention") and/or the Convention for the International Carriage of Goods by Road (the "CMR Convention"). These commodities, technology or software were exported from the U.S. in accordance with the Export Administration Regulations. Diversion contrary to U.S. law prohibited.

International Shipping Notice — Carriage hereunder may be subject to the rules relating to liability and other terms and/or conditions established by the Convention for the Unification of Certain Rules Relating to International Carriage by Air (the "Warsaw Convention") and/or the Convention for the International Carriage of Goods by Road (the "CMR Convention"). These commodities, technology or software were exported from the U.S. in accordance with the Export Administration Regulations. Diversion contrary to U.S. law prohibited.
010195101 11/03 BL United Parcel Service, Inc.