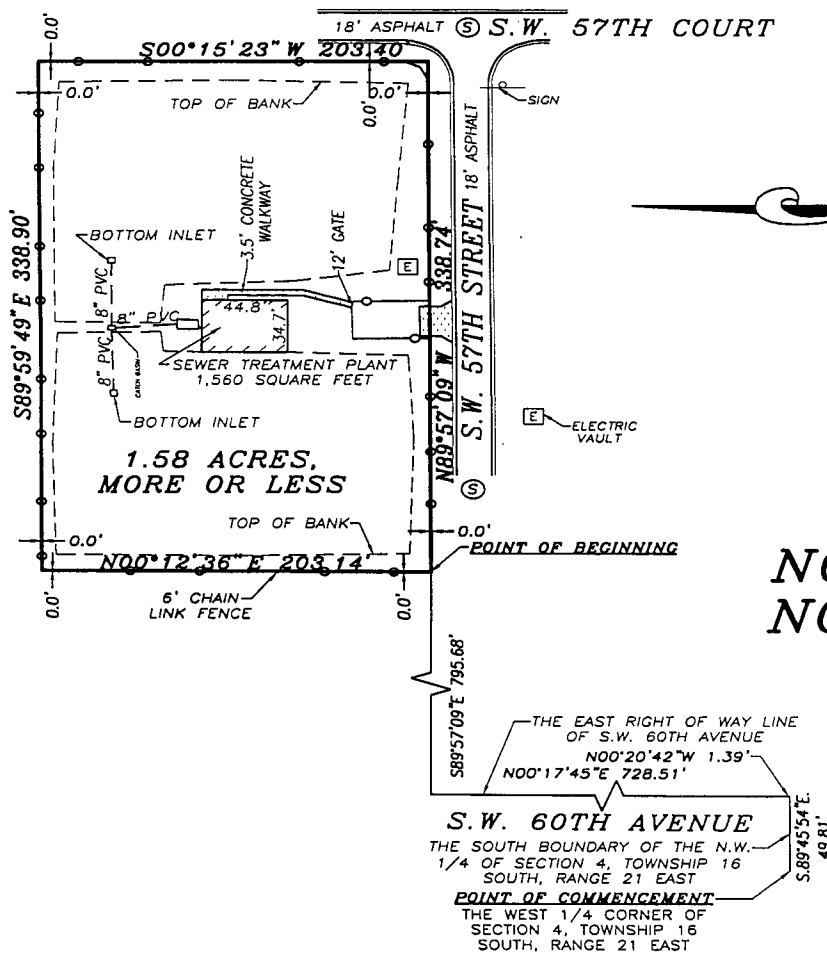


**SKETCH OF DESCRIPTION FOR:  
CENTURY-FAIRFIELD VILLAGE, LTD**



**NOTE: THIS IS NOT A SURVEY**

RECEIVED-FPSC  
OCT-5 PM 4:10  
COMMISSION CLERK

DOCUMENT NUMBER-DATE  
09165 001-5160

FPSC-COMMISSION CLERK

SECTION 4, TOWNSHIP 16 SOUTH, RANGE 21 EAST

**DESCRIPTION:**

A PORTION OF THE N.W. 1/4 OF SECTION 4, TOWNSHIP 16 SOUTH, RANGE 21 EAST, MARION COUNTY, FLORIDA, BEING MORE PARTICULARLY DESCRIBED AS FOLLOWS:

COMMENCE AT THE WEST 1/4 CORNER OF SAID SECTION 4; THENCE ALONG THE SOUTH BOUNDARY OF THE N.W. 1/4 OF SAID SECTION 4, S.89°45'54"E., A DISTANCE OF 49.81 FEET TO THE EAST RIGHT OF WAY LINE OF S.W. 60TH AVENUE (A 100 FOOT WIDE RIGHT OF WAY); THENCE DEPARTING SAID SOUTH BOUNDARY, ALONG SAID EAST RIGHT OF WAY LINE, N.00°20'42"W., A DISTANCE OF 1.39 FEET; THENCE CONTINUE ALONG SAID EAST RIGHT OF WAY LINE, N.00°17'45"E., A DISTANCE OF 728.51 FEET; THENCE DEPARTING SAID EAST RIGHT OF WAY LINE, S.89°57'09"E., A DISTANCE OF 795.68 FEET TO THE POINT OF BEGINNING. THENCE N.00°12'36"E., A DISTANCE OF 203.14 FEET; THENCE S.89°59'49"E., A DISTANCE OF 338.90 FEET; THENCE S.00°15'23"W., A DISTANCE OF 203.40 FEET; THENCE N.89°57'09"W., A DISTANCE OF 338.74 FEET TO THE POINT OF BEGINNING. THE ABOVE DESCRIBED LAND CONTAINS 1.58 ACRES, MORE OR LESS.

**NOTES:**

1. DATE OF SKETCH: SEPTEMBER 07, 2007.
2. SUBJECT TO RIGHTS OF WAY, RESTRICTIONS, EASEMENTS AND RESERVATIONS OF RECORD.
3. UNLESS OTHERWISE SHOWN, UNDERGROUND IMPROVEMENTS NOT LOCATED.
4. PUBLIC RECORDS NOT SEARCHED BY R.M. BARRINEAU & ASSOCIATES, INC.
5. BEARINGS ARE ASSUMED BASED ON THE EAST RIGHT OF WAY LINE OF S.W. 60TH AVENUE AS BEING N.00°17'45"E.

**LEGEND UNLESS OTHERWISE NOTED**

- = SET 5/8" IRON ROD & CAP - LB 5091
- = FOUND 4" x 4" CONCRETE MONUMENT
- ⊕ = CENTERLINE OF RIGHT OF WAY
- (P) = PLAT DIMENSION
- (F) = FIELD MEASUREMENT
- ⊠ = WATER METER
- ⊙ = SANITARY MANHOLE
- ⊞ = TELEPHONE BOX
- ⊚ = ELECTRIC BOX
- ⊛ = CABLE BOX
- - - = BROKEN LINE; NOT DRAWN TO SCALE

**SURVEYOR'S CERTIFICATION:**

I HEREBY CERTIFY THAT THE SKETCH REPRESENTED HEREON MEETS THE MINIMUM TECHNICAL STANDARDS AS SET FORTH BY THE FLORIDA BOARD OF PROFESSIONAL SURVEYORS AND MAPPERS IN CHAPTER 61G17-6, FLORIDA ADMINISTRATIVE CODE, PURSUANT TO SECTION 472.027, FLORIDA STATUTES.

*[Signature]*  
OF R.M. BARRINEAU & ASSOCIATES, INC.

NOT VALID WITHOUT THE SIGNATURE AND THE ORIGINAL RAISED SEAL OF A FLORIDA LICENSED SURVEYOR AND MAPPER

COPYRIGHT © SEPTEMBER, 2007  
**R.M. BARRINEAU & ASSOCIATES, INC.**  
 PROFESSIONAL SURVEYORS & MAPPERS  
 OAKHURST PROFESSIONAL PARK  
 1309 S.E. 25TH LOOP, SUITE 103 PHONE (352) 622-3133  
 Ocala, Florida 34471 FAX (352) 369-3771  
 REGINALD M. BARRINEAU, P.S.M. - FOUNDER  
 CERTIFICATE OF AUTHORIZATION NO. LB 5091  
 KEVIN J. FLANAGAN, P.S.M. - LS 3942 CHRISTOPHER J. HOWSON, P.S.M. - LS 6553  
 MELVIN A. BOWEN, P.S.M. - LS 5035 KENNETH R. SCHORFHAAR, P.S.M. - LS 9220

DRAWN:	S.A.S.	J.O.# 04552
REVISED:		DWG.# 04552SK-STP
CHECKED:	C.J.H.	SEE FILE
APPROVED:	C.J.H.	FILE: T16-R21-S4
SCALE: 1" = 100'		REFERENCES