

Matilda Sanders

PSC-08 - 0704 - CO - E1

080257

From: Theresa Walsh
Sent: Thursday, October 23, 2008 11:37 AM
To: CLK - Orders / Notices; Martha Brown; Erik Saylor
Subject: Order / Notice Submitted

Date and Time: 10/23/2008 11:34:00 AM
Docket Number: 080255; 080257; 080260; 080265; 080294
Filename / Path: 080255.257.260.265.294.CO.mcb.els.doc

FPSC, CLK - CORRESPONDENCE
XAdministrative Parties Consumer
DOCUMENT NO. 03876-08
DISTRIBUTION: _____

Please issue the above-referenced CONSUMMATING ORDER today in Docket Nos. 080255, 080257, 080260, 080265, and 080294.

44 faxed
22 mailed (includes co. clerks
E1801; 802; 803; 804; 806)
19 emailed

**FLORIDA PUBLIC SERVICE COMMISSION
CASE MANAGEMENT SYSTEM
PARTICIPATING EMAIL ADDRESSES**

PARTY NAME	COMPANY CODE	EMAIL ADDRESS	ADDRESS IN MASTER COMMISSION DIRECTORY
Board of County Commissioners, Charlotte County		ccbcc01@peganet.com	Yes
Broward County Recording Division, Broward County		sbaldwin@broward.org	Yes
Chairman, Board of County Commissioners, Lee County		dist3@leegov.com	Yes
Clerk of Court, St. Johns County		coc@co.st-johns.fl.us	Yes
Clerk of the Circuit Court, Charlotte County		mariec@peganet.com	Yes
Clerk, Board of County Commissioners, Leon County		billb@mail.10.leon.fl.us	Yes
Clerk, Board of County Commissioners, Manatee County		Chipshore@ClerkofCourts.com	Yes
Clerk, Board of County Commissioners, Monroe County		kwclck@aol.com	Yes
Clerk, Board of County Commissioners, Osceola County		104705.1562@Compuserve.com	Yes
County Manager/Clerk, Volusia County		larrington@co.volusia.fl.us	Yes
Florida Power & Light Company (Juno08d)		Wade Litchfield@fpl.com	No
Gulf Power Company	EI804	sdriteno@southernco.com	No
Keys & Fox, LLP		kfox@keyesandfox.com	No
Messer Law Firm (08b)		nhorton@lawfla.com	No
Progress Energy Florida, Inc.	EI801	paul.lewisjr@pgnmail.com	No
Progress Energy Service Company, LLC (08)		john.burnett@pgnmail.com	No
Ruden McClosky (Covanta08)		mary.smallwood@ruden.com	No
Tampa Electric Company	EI806	Regdept@tecoenergy.com	No
The Vote Solar Initiative		gwen@votesolar.com	No

Case Management System (CMS) - Docket View

Docket/Document/Order: Filter: (Default Docket Search Specifications) Key Word: Refresh Document View

Double-click an item to view docket details - Right-click an item for additional viewing, editing and printing options - Press F2 to Search

DOCKET	STATUS	TITLE
080255-EI	Activ	
080257-EI	Activ	
080260-EI	Activ	
080265-EI	Activ	
080294-EI	Activ	

Emails

Emailing Options

Option 1: Emails
 Option 2: Faxes
 Option 3: Envelopes

Begin Faxing From 1 of 66

- Ausley Law Firm (07)
- Beggs & Lane Law Firm (08)
- Chairman, Board of County Commissioners, Gulf County
- Chairman, Board of County Commissioners, Martin County
- City Clerk, City of Palm Coast
- Clerk of the Circuit Court, Escambia County
- Clerk of the Circuit Court, Indian River County
- Clerk of the Circuit Court, Lee County

File Attachments (Right-click an attachment to view the document)

- L:\PSC\LIBRARY\FILINGS\08\10072-08\10072-08.PDF

Document ID / Order ID: 10072-08

Send
Cancel
Attachments

renewable generation
 d tariff sheets, by Progre
 ible generation systems
 Company
 ms, by Florida Public Lt

Start | Inbox - Micr... | Case Manag... | 2:16 PM

Double-click an item to view docket details - Right-click an item for additional viewing, editing and printing options - Press F2 to Search

DOCKET	STATUS	TITLE
080255-EI	Activ	
080257-EI	Activ	
080260-EI	Activ	
080265-EI	Activ	
080294-EI	Activ	

Emails

Emailing Options

Option 1: Option 2:

Option 3:

Begin Faxing From 1 of 66

- Clerk of the Circuit Court, Sarasota County
- Clerk of the Circuit Court, St. Lucie County
- Clerk of the Circuit Court, Walton County
- Clerk, Board of County Commissioners, Alachua County
- Clerk, Board of County Commissioners, Baker County
- Clerk, Board of County Commissioners, Bay County
- Clerk, Board of County Commissioners, Bradford County
- Clerk, Board of County Commissioners, Brevard County

File Attachments (Right-click an attachment to view the document)

L:\PSC\LIBRARY\FILINGS\08\10072-08\10072-08 PDF

Document ID / Order ID:

Send

Cancel

Attachments

renewable generation
 d tariff sheets, by Progre
 ble generation systems
 Company
 ms, by Florida Public Ut

Case Management System (CMS) - Docket View

Docket/Document/Order: Filter: (Default Docket Search Specifications) Key Word: Refresh Document View

Double-click an item to view docket details - Right-click an item for additional viewing, editing and printing options - Press F2 to Search

DOCKET	STATUS	TITLE
080255-EI	Active	
080257-EI	Active	
080260-EI	Active	
080265-EI	Active	
080294-EI	Active	

Emails

Emailing Options

Option 1: Option 2:

Option 3:

Begin Faxing From 1 of 66

- Clerk, Board of County Commissioners, Citrus County
- Clerk, Board of County Commissioners, Clay County
- Clerk, Board of County Commissioners, Collier County
- Clerk, Board of County Commissioners, Dade County
- Clerk, Board of County Commissioners, Desoto County
- Clerk, Board of County Commissioners, Dixie County
- Clerk, Board of County Commissioners, Duval County
- Clerk, Board of County Commissioners, Flagler County

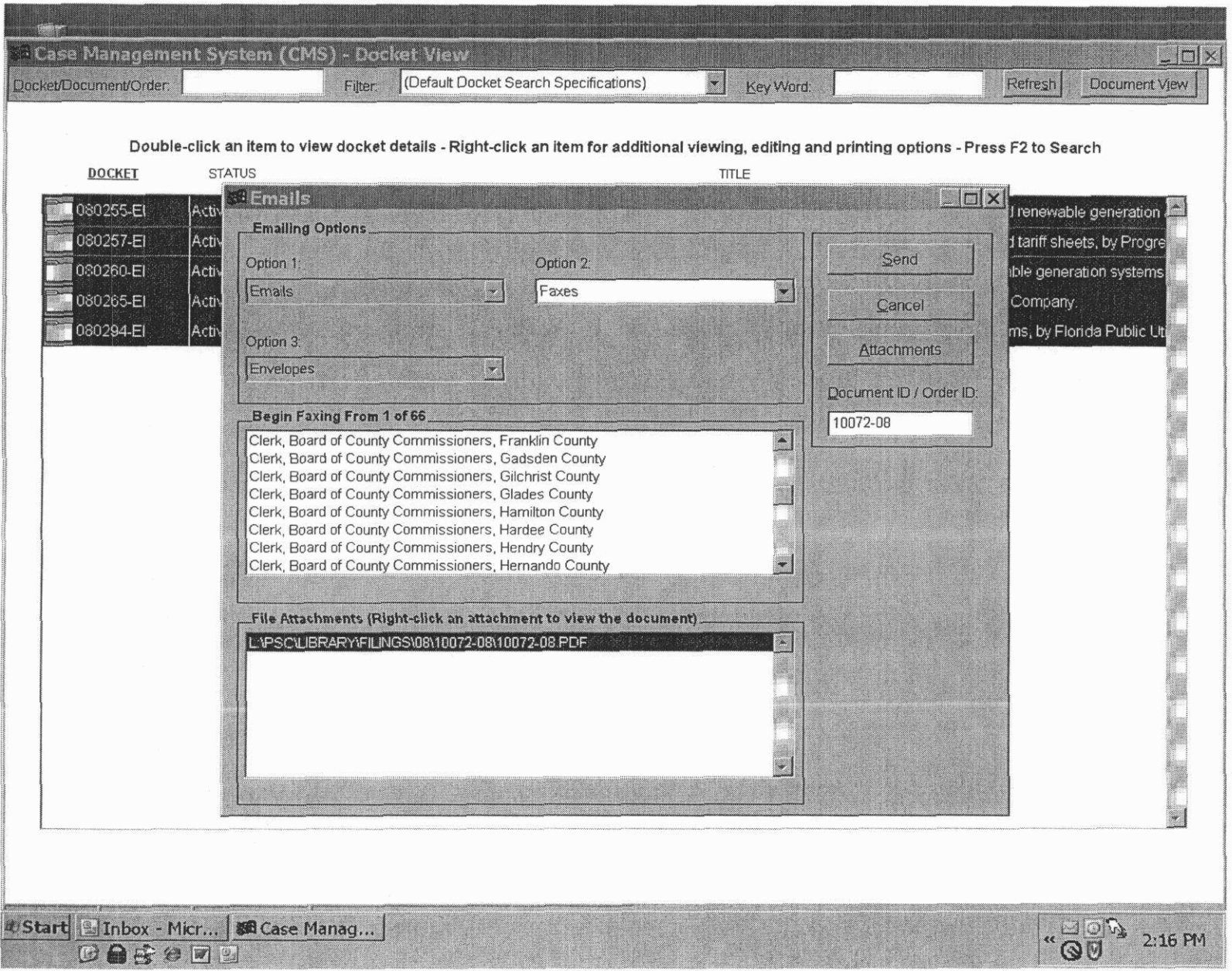
File Attachments (Right-click an attachment to view the document)

- L:\PSC\LIBRARY\FILINGS\08\10072-08\10072-08 PDF

Document ID / Order ID:

Send
Cancel
Attachments

Taskbar: Start | Inbox - Micr... | Case Manag... | 2:16 PM



Case Management System (CMS) - Docket View

Docket/Document/Order: [] Filter: (Default Docket Search Specifications) Key Word: [] Refresh Document View

Double-click an item to view docket details - Right-click an item for additional viewing, editing and printing options - Press F2 to Search

DOCKET	STATUS	TITLE
080255-EI	Activ	renewable generation
080257-EI	Activ	d tariff sheets, by Progre
080260-EI	Activ	ble generation systems
080265-EI	Activ	Company.
080294-EI	Activ	ms, by Florida Public Lt

Emails

Emailing Options

Option 1: [Emails] Option 2: [Faxes]

Option 3: [Envelopes]

Begin Faxing From 1 of 66

- Clerk, Board of County Commissioners, Franklin County
- Clerk, Board of County Commissioners, Gadsden County
- Clerk, Board of County Commissioners, Gilchrist County
- Clerk, Board of County Commissioners, Glades County
- Clerk, Board of County Commissioners, Hamilton County
- Clerk, Board of County Commissioners, Hardee County
- Clerk, Board of County Commissioners, Hendry County
- Clerk, Board of County Commissioners, Hernando County

File Attachments (Right-click an attachment to view the document)

- L:\PSC\LIBRARY\FILINGS\08\10072-08\10072-08.PDF

Document ID / Order ID: 10072-08

[Send] [Cancel] [Attachments]

Double-click an item to view docket details - Right-click an item for additional viewing, editing and printing options - Press F2 to Search

DOCKET	STATUS	TITLE
080255-EI	Active	
080257-EI	Active	
080260-EI	Active	
080265-EI	Active	
080294-EI	Active	

Emails

Emailing Options

Option 1: Option 2:

Option 3:

Begin Faxing From 1 of 66

- Clerk, Board of County Commissioners, Highlands County
- Clerk, Board of County Commissioners, Hillsborough County
- Clerk, Board of County Commissioners, Holmes County
- Clerk, Board of County Commissioners, Jackson County
- Clerk, Board of County Commissioners, Jefferson County
- Clerk, Board of County Commissioners, Lafayette County
- Clerk, Board of County Commissioners, Lake County
- Clerk, Board of County Commissioners, Levy County

File Attachments (Right-click an attachment to view the document)

L:\PSC\LIBRARY\FILINGS\08\10072-08\10072-08.PDF

Document ID / Order ID:

Send

Cancel

Attachments

Case Management System (CMS) - Docket View

Docket/Document/Order: Filter: (Default Docket Search Specifications) Key Word: Refresh Document View

Double-click an item to view docket details - Right-click an item for additional viewing, editing and printing options - Press F2 to Search

DOCKET	STATUS	TITLE
080255-EI	Activ	
080257-EI	Activ	
080260-EI	Activ	
080265-EI	Activ	
080294-EI	Activ	

Emails

Emailing Options

Option 1: Emails
 Option 2: Faxes
 Option 3: Envelopes

Begin Faxing From 1 of 66

- Clerk, Board of County Commissioners, Liberty County
- Clerk, Board of County Commissioners, Madison County
- Clerk, Board of County Commissioners, Marion County
- Clerk, Board of County Commissioners, Nassau County
- Clerk, Board of County Commissioners, Okaloosa County
- Clerk, Board of County Commissioners, Okeechobee County
- Clerk, Board of County Commissioners, Orange County
- Clerk, Board of County Commissioners, Palm Beach County

File Attachments (Right-click an attachment to view the document)

L:\PSC\LIBRARY\FILINGS\08\10072-08\10072-08.PDF

Document ID / Order ID: 10072-08

Send
Cancel
Attachments

Taskbar: Start | Inbox - Micr... | Case Manag... | 2:16 PM

Case Management System (CMS) - Docket View

Docket/Document/Order: Filter: (Default Docket Search Specifications) Key Word: Refresh Document View

Double-click an item to view docket details - Right-click an item for additional viewing, editing and printing options - Press F2 to Search

DOCKET	STATUS	TITLE
080255-EI	Active	
080257-EI	Active	
080260-EI	Active	
080265-EI	Active	
080294-EI	Active	

Emails

Emailing Options

Option 1: Option 2:

Option 3:

Begin Faxing From 1 of 66

- Clerk, Board of County Commissioners, Pasco County
- Clerk, Board of County Commissioners, Pinellas County
- Clerk, Board of County Commissioners, Polk County
- Clerk, Board of County Commissioners, Putnam County
- Clerk, Board of County Commissioners, Santa Rosa County
- Clerk, Board of County Commissioners, Seminole County
- Clerk, Board of County Commissioners, St. Lucie County
- Clerk, Board of County Commissioners, Sumter County

File Attachments (Right-click an attachment to view the document)

L:\PSC\LIBRARY\FILINGS\08\10072-08\10072-08.PDF

Document ID / Order ID:

Send Cancel Attachments

Taskbar: Start | Inbox - Micr... | Case Manag... | 2:16 PM

Double-click an item to view docket details - Right-click an item for additional viewing, editing and printing options - Press F2 to Search

DOCKET	STATUS
080255-EI	Activ
080257-EI	Activ
080260-EI	Activ
080265-EI	Activ
080294-EI	Activ

Emails

Emailing Options

Option 1: Option 2:

Option 3:

Begin Faxing From 1 of 66

- Clerk, Board of County Commissioners, Suwannee County
- Clerk, Board of County Commissioners, Taylor County
- Clerk, Board of County Commissioners, Union County
- Clerk, Board of County Commissioners, Wakulla County
- Clerk, Board of County Commissioners, Washington County
- Clerk, to the Board County Commissioners, Indian River Cou
- County Administrator, Escambia County
- County Coordinator, Bd. County Commissioners, Columbia Co.

File Attachments (Right-click an attachment to view the document)

L:\PSC\LIBRARY\FILINGS\08\10072-08\10072-08 PDF

Document ID / Order ID:

Send

Cancel

Attachments

renewable generation
 tariff sheets, by Progre
 ble generation systems
 Company
 ms, by Florida Public Ut

Case Management System (CMS) - Docket View

Docket/Document/Order: Filter: (Default Docket Search Specifications) Key Word: Refresh Document View

Double-click an item to view docket details - Right-click an item for additional viewing, editing and printing options - Press F2 to Search

DOCKET	STATUS	TITLE
080255-EI	Active	
080257-EI	Active	
080260-EI	Active	
080265-EI	Active	
080294-EI	Active	

Emails

Emailing Options

Option 1: Option 2:

Option 3:

Begin Faxing From 1 of 66

- Clerk, Board of County Commissioners, Union County
- Clerk, Board of County Commissioners, Wakulla County
- Clerk, Board of County Commissioners, Washington County
- Clerk, to the Board County Commissioners, Indian River Cou
- County Administrator, Escambia County
- County Coordinator, Bd. County Commissioners, Columbia Co.
- Florida Public Utilities Company (08a)
- Philip Nissen Froelich

File Attachments (Right-click an attachment to view the document)

L:\PSC\LIBRARY\FILINGS\08\10072-08\10072-08.PDF

Document ID / Order ID:

Send
Cancel
Attachments

#Start | Inbox - Micr... | Case Manag... | 2:17 PM

Double-click an item to view docket details - Right-click an item for additional viewing, editing and printing options - Press F2 to Search

DOCKET	STATUS
080255-EI	Activ
080257-EI	Activ
080260-EI	Activ
080265-EI	Activ
080294-EI	Activ

Emails

Emailing Options

Option 1: [Emails] Option 2: [Faxes]
Option 3: [Envelopes]

Begin Printing From 1 of 22

- Chairman, Board of County Commissioners, Gulf County
- Clerk of the Circuit Court, St. Lucie County
- Clerk, Board of County Commissioners, Alachua County
- Clerk, Board of County Commissioners, Baker County
- Clerk, Board of County Commissioners, Bay County
- Clerk, Board of County Commissioners, Clay County
- Clerk, Board of County Commissioners, Desoto County
- Clerk, Board of County Commissioners, Duval County

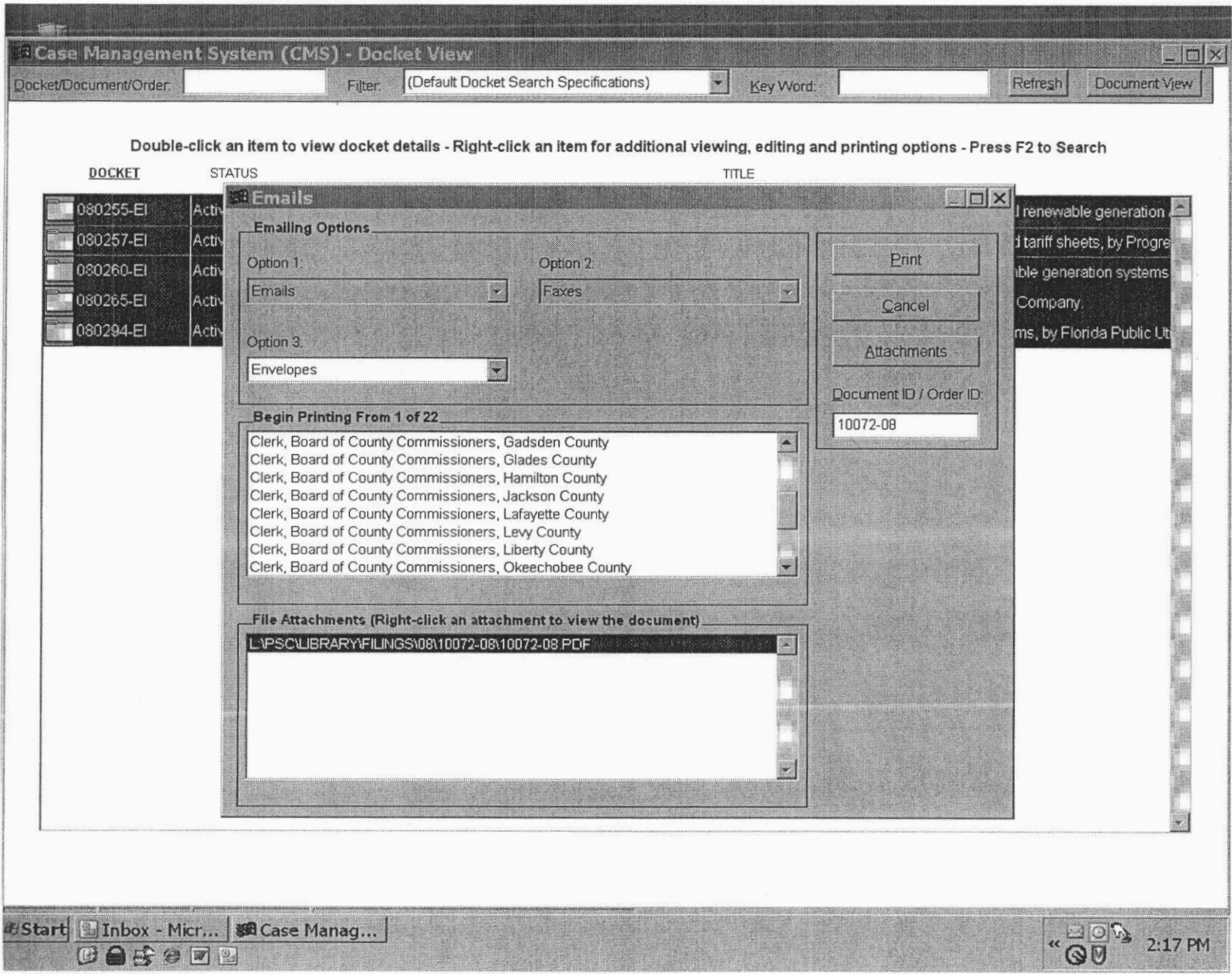
File Attachments (Right-click an attachment to view the document)

- L:\PSC\LIBRARY\FILINGS\08\10072-08\10072-08 PDF

Document ID / Order ID: 10072-08

Print
Cancel
Attachments

renewable generation
tariff sheets, by Progre
ble generation systems
Company
ms, by Florida Public Ut



Case Management System (CMS) - Docket View

Docket/Document/Order: [] Filter: (Default Docket Search Specifications) Key Word: [] Refresh Document View

Double-click an item to view docket details - Right-click an item for additional viewing, editing and printing options - Press F2 to Search

DOCKET	STATUS	TITLE
080255-EI	Activ	
080257-EI	Activ	
080260-EI	Activ	
080265-EI	Activ	
080294-EI	Activ	

Emails

Emailing Options

Option 1: [Emails] Option 2: [Faxes]

Option 3: [Envelopes]

Begin Printing From 1 of 22

- Clerk, Board of County Commissioners, Gadsden County
- Clerk, Board of County Commissioners, Glades County
- Clerk, Board of County Commissioners, Hamilton County
- Clerk, Board of County Commissioners, Jackson County
- Clerk, Board of County Commissioners, Lafayette County
- Clerk, Board of County Commissioners, Levy County
- Clerk, Board of County Commissioners, Liberty County
- Clerk, Board of County Commissioners, Okeechobee County

File Attachments (Right-click an attachment to view the document)

- L:\PSC\LIBRARY\FILINGS\08\10072-08\10072-08.PDF

Document ID / Order ID: 10072-08

Print
Cancel
Attachments

Start | Inbox - Micr... | Case Manag...

2:17 PM

Case Management System (CMS) - Docket View

Docket/Document/Order: Filter: (Default Docket Search Specifications) Key Word: Refresh Document View

Double-click an item to view docket details - Right-click an item for additional viewing, editing and printing options - Press F2 to Search

DOCKET	STATUS	TITLE
080255-EI	Active	
080257-EI	Active	
080260-EI	Active	
080265-EI	Active	
080294-EI	Active	

Emails

Emailing Options

Option 1: Option 2:

Option 3:

Begin Printing From 1 of 22

- Clerk, Board of County Commissioners, Liberty County
- Clerk, Board of County Commissioners, Okeechobee County
- Clerk, Board of County Commissioners, Polk County
- Clerk, Board of County Commissioners, Putnam County
- Clerk, Board of County Commissioners, Seminole County
- Clerk, Board of County Commissioners, Union County
- Clerk, Board of County Commissioners, Wakulla County
- Florida Public Utilities Company (08a)

File Attachments (Right-click an attachment to view the document)

- L:\PSC\LIBRARY\FILINGS\08\10072-08\10072-08 PDF

Document ID / Order ID:

Print
Cancel
Attachments

renewable generation
d tariff sheets, by Progre
ble generation systems
Company
ms, by Florida Public Ut

Start | Inbox - Micr... | Case Manag... | 2:17 PM

Tiffany Williams

PSC-08-0624-TRF-EI

080257

From: Theresa Walsh
Sent: Wednesday, September 24, 2008 9:46 AM
To: CLK - Orders / Notices; Martha Brown; Erik Sayler
Subject: Order / Notice Submitted

FPSC, CLK - CORRESPONDENCE

Administrative Parties Consumer

Date and Time: 9/24/2008 9:43:00 AM
Docket Number: 080255, 080257, 080260, 080265, 080294
Filename / Path: 080255.257.260.265.294.OR.090408.mcb.doc

DOCUMENT NO. 03876-08

DISTRIBUTION: _____

Please issue the above-referenced ORDER APPROVING TARIFFS AND INTERCONNECTION AGREEMENTS today in Docket Nos. 080255, 080257, 080260, 080265 and 080294.

3 faxed
1 mailed (+ 73 co. clerks
EI 801, 802, 803, 804, 806)
9 emailed

**FLORIDA PUBLIC SERVICE COMMISSION
CASE MANAGEMENT SYSTEM
PARTICIPATING EMAIL ADDRESSES**

PARTY NAME	COMPANY CODE	EMAIL ADDRESS	ADDRESS IN MASTER COMMISSION DIRECTORY
Florida Power & Light Company (Juno08d)		Wade Litchfield@fpl.com	No
Gulf Power Company	EI804	sdriteno@southernco.com	No
Keyes & Fox, LLP		kfox@keyesandfox.com	No
Messer Law Firm (08b)		nhorton@lawfla.com	No
Progress Energy Florida, Inc.	EI801	paul.lewisjr@pgnmail.com	No
Progress Energy Service Company, LLC (08)		john.burnett@pgnmail.com	No
Ruden McClosky (Covanta08)		mary.smallwood@ruden.com	No
Tampa Electric Company	EI806	Regdept@tecoenergy.com	No
The Vote Solar Initiative		gwen@votesolar.com	No

Double-click an item to view docket details - Right-click an item for additional viewing, editing and printing options - Press F2 to Search

DOCKET	STATUS	TITLE
080255-EI	Active	
080257-EI	Active	
080260-EI	Active	
080265-EI	Active	
080294-EI	Active	

Emails

Emailing Options

Option 1: Option 2:

Option 3:

Begin Faxing From 1 of 4

- Ausley Law Firm (07)
- Beggs & Lane Law Firm (08)
- Florida Public Utilities Company (08a)
- Philip Nissen Froelich

File Attachments (Right-click an attachment to view the document)

- L:\PSC\LIBRARY\FILINGS\08\08992-08\08992-08.PDF

Document ID / Order ID:

Double-click an item to view docket details - Right-click an item for additional viewing, editing and printing options - Press F2 to Search

DOCKET	STATUS	TITLE
080255-EI	Activ	
080257-EI	Activ	
080260-EI	Activ	
080265-EI	Activ	
080294-EI	Activ	

Emails

Emailing Options

Option 1: Option 2:

Option 3:

Begin Printing From 1 of 1

Florida Public Utilities Company (08a)

File Attachments (Right-click an attachment to view the document)

L:\PSC\LIBRARY\FILINGS\08\08992-08\08992-08.PDF

Print
Cancel
Attachments

Document ID / Order ID:
08992-08

renewable generation
d tariff sheets, by Progre
ble generation systems
Company
ms, by Florida Public Ut

Board of County Commissioners, Charlotte County
Charlotte County Administration Center
18500 Murdock Circle, Room 536
Port Charlotte, FL 33948-1094

Broward County Recording Division, Broward County
Governmental Center
115 South Andrews Avenue, Room 114
Ft. Lauderdale, FL 33301-1873

Chairman, Board of County Commissioners, Gulf County
1000 Fifth Street
Port St. Joe, FL 32456-1648

Chairman, Board of County Commissioners, Lee County
P. O. Box 398
Ft. Myers, FL 33902-0398

Chairman, Board of County Commissioners, Martin County
2401 S.E. Monterey Road
Stuart, FL 34996-3397

City Clerk, City of Palm Coast
2 Commerce Blvd.
Palm Coast, FL 32164-3126

Clerk of Court, St. Johns County
4010 Lewis Speedway
St. Augustine, FL 32084-8637

Clerk of the Circuit Court, Charlotte County
Charlotte County Administration Center
18500 Murdock Circle, Room 423
Port Charlotte, FL 33948-1094

Clerk of the Circuit Court, Escambia County
190 Governmental Center, Room 234
Pensacola, FL 32501-5757

Minutes Department
Clerk of the Circuit Court, Lee County
P. O. Box 2469
Fort Myers, FL 33902-2469

Clerk of the Circuit Court, Sarasota County
Board Records Dept - County ADM Center
P. O. Box 8
Sarasota, FL 34230-0008

Clerk of the Circuit Court, St. Lucie County
221 South Indian River Drive
Ft. Pierce, FL 34950-4315

Clerk of the Circuit Court, St. Lucie County
P. O. Box 700
Ft. Pierce, FL 34954-0700

Clerk of the Circuit Court, Walton County
County Courthouse
P. O. Box 1260
Defuniak Springs, FL 32435-1260

Clerk of the Circuit Court, Indian River County
P. O. Box 1028
Vero Beach, FL 32961-1028

Clerk, Board of County Commissioners, Alachua County
P. O. Box 939
Gainesville, FL 32602-0939

Clerk, Board of County Commissioners, Baker County
339 East Macclenny Avenue
Macclenny, FL 32063-2231

Clerk, Board of County Commissioners, Bay County
P. O. Box 2269
Panama City, FL 32402-2269

Clerk, Board of County Commissioners, Bradford County
P. O. Drawer B
Starke, FL 32091-1286

Clerk, Board of County Commissioners, Brevard County
P. O. Box 999
Titusville, FL 32781-0999

Clerk, Board of County Commissioners, Citrus County
110 North Apopka Avenue
Inverness, FL 34450-4231

Clerk, Board of County Commissioners, Clay County
P. O. Box 698
Green Cove Springs, FL 32043-0698

Clerk, Board of County Commissioners, Collier County
Building C-1
3301 Tamiami Trail East
Naples, FL 34112-2397

Clerk, Board of County Commissioners, Dade County
111 N.W. 1st Street, Room 17-202
Miami, FL 33130-1901

Clerk, Board of County Commissioners, Desoto County
201 East Oak Street, Suite 201
Arcadia, FL 34266-4451

Clerk, Board of County Commissioners, Dixie County
P. O. Box 1206
Cross City, FL 32628-1206

Clerk, Board of County Commissioners, Duval County
Duval County Courthouse
330 East Bay Street
Jacksonville, FL 32202-2921

Clerk, Board of County Commissioners, Flagler County
Kim C. Hammond Justice Center
1769 East Moody Blvd., Bldg. 1
Bunnell, FL 32110-5991

Clerk, Board of County Commissioners, Franklin County
33 Market Street, Suite 203
Apalachicola, FL 32320-2310

Clerk, Board of County Commissioners, Gadsden County
P. O. Box 1799
Quincy, FL 32351-5799

Clerk, Board of County Commissioners, Gilchrist County
P. O. Box 37
Trenton, FL 32693-0037

Clerk, Board of County Commissioners, Glades County
P. O. Box 10
Moore Haven, FL 33471-0010

Clerk, Board of County Commissioners, Hamilton County
207 N.E. First Street, Room 106
Jasper, FL 32052-2008

Clerk, Board of County Commissioners, Hardee County
P. O. Box 1749
Wauchula, FL 33873-1749

Clerk, Board of County Commissioners, Hendry County
P. O. Box 1760
Labelle, FL 33975-1760

Clerk, Board of County Commissioners, Hernando County
County Attorney
20 North Main Street, Room 130
Brooksville, FL 34601-2893

Clerk, Board of County Commissioners, Highlands County
590 South Commerce Avenue
Sebring, FL 33870-3867

Clerk, Board of County Commissioners, Hillsborough County
P. O. Box 1110
Tampa, FL 33601

Clerk, Board of County Commissioners, Holmes County
201 N. Oklahoma St.
Bonifay, FL 32425-2243

Clerk, Board of County Commissioners, Jackson County
P. O. Box 510
Marianna, FL 32446-0510

Clerk, Board of County Commissioners, Jefferson County
County Courthouse - Room 10
Monticello, FL 32344

Clerk, Board of County Commissioners, Lafayette County
P. O. Box 88
Mayo, FL 32066-0088

Clerk, Board of County Commissioners, Lake County
P. O. Box 7800
Tavares, FL 32778-7800

Clerk, Board of County Commissioners, Leon County
P. O. Box 726
Tallahassee, FL 32302-0726

Clerk, Board of County Commissioners, Levy County
P. O. Box 630
Bronson, FL 32621-0630

Clerk, Board of County Commissioners, Liberty County
P. O. Box 399
Bristol, FL 32321-0399

Clerk, Board of County Commissioners, Madison County
P. O. Box 237
Madison, FL 32341-0237

Clerk, Board of County Commissioners, Manatee County
County Courthouse
P. O. Box 1000
Bradenton, FL 34206-1000

Clerk, Board of County Commissioners, Marion County
P. O. Box 1030
Ocala, FL 32678-1030

Clerk, Board of County Commissioners, Monroe County
500 Whitehead St.
Key West, FL 33040-6547

Clerk, Board of County Commissioners, Nassau County
76347 Veteran's Way, Suite 1010
Yulee, FL 32097-5404

Clerk, Board of County Commissioners, Okaloosa County
County Courthouse, Room 118
Crestview, FL 32536

Clerk, Board of County Commissioners, Okeechobee County
304 N. W. 2nd Street
Okeechobee, FL 34972-4146

Clerk, Board of County Commissioners, Orange County
P. O. Box 38
Orlando, FL 32802-0038

Clerk, Board of County Commissioners, Osceola County
Courthouse
17 South Vernon Avenue, Room 178
Kissimmee, FL 32741-3603

Clerk, Board of County Commissioners, Palm Beach County
P. O. Box 4036
West Palm Beach, FL 33402-4036

Clerk, Board of County Commissioners, Pasco County
38053 Live Oak Avenue
Dade City, FL 33525

Clerk, Board of County Commissioners, Pinellas County
315 Court Street
Clearwater, FL 34616-5165

Clerk, Board of County Commissioners, Polk County
P. O. Box 9000, Drawer CC-1
Bartow, FL 33831-9000

Clerk, Board of County Commissioners, Putnam County
P. O. Box 758
Palatka, FL 32178-0758

Clerk, Board of County Commissioners, Santa Rosa County
6495 Caroline Street
Milton, FL 32570-4592

Clerk, Board of County Commissioners, Seminole County
P. O. Drawer C
Sanford, FL 32772-0659

Clerk, Board of County Commissioners, St. Lucie County
2300 Virginia Avenue
Ft. Pierce, FL 34982-5652

Clerk, Board of County Commissioners, Sumter County
910 North Main Street, Room 201
Bushnell, FL 33513-5016

Clerk, Board of County Commissioners, Suwannee County
Courthouse
200 South Ohio Avenue
Live Oak, FL 32060-3239

Clerk, Board of County Commissioners, Taylor County
P. O. Box 620
Perry, FL 32348-0620

Clerk, Board of County Commissioners, Union County
Union County Courthouse
15 N.E. 1st Street
Lake Butler, FL 32054-1701

Clerk, Board of County Commissioners, Wakulla County
3056 Crawfordville Highway
Crawfordville, FL 32327-3135

Clerk, Board of County Commissioners, Washington County
P. O. Box 647
Chipley, FL 32428-0647

Clerk, to the Board County Commissioners, Indian River Cou
1840 25th Street
Vero Beach, FL 32960-3365

County Board of Commissioners
County Administrator, Escambia County
P. O. Box 1591
Pensacola, FL 32597-1591

County Coordinator, Bd. County Commissioners, Columbia Co.
P. O. Box 1529
Lake City, FL 32056-2159

County Manager/Clerk, Volusia County
123 West Indiana Avenue
Deland, FL 32720-4612

Code for order:
Total for order: 73
09/24/2008

080257

PSC-08-0468-PCO-EI

Marguerite McLean

From: Timolyn Henry
Sent: Monday, July 21, 2008 12:03 PM
To: CLK - Orders / Notices
Cc: Martha Brown; Erik Saylor
Subject: Order / Notice Submitted

3 pgs

Date and Time: 7/21/2008 11:59:00 AM
Docket Number: 080255-EI, 080257-EI, 080260-EI, 080265-EI, 080294-EI
Filename / Path: 080255.257.260.265.294.OR.mcb.doc

ORDER SUSPENDING NET METERING TARIFFS FILED RESPECTIVELY BY TAMPA ELECTRIC COMPANY,
PROGRESS ENERGY FLORIDA, INC., GULF POWER COMPANY, FLORIDA POWER & LIGHT COMPANY, AND
FLORIDA PUBLIC UTILITIES COMPANY

FPSC, CLK - CORRESPONDENCE
~~X~~Administrative Parties Consumer
DOCUMENT NO. 03876-08
DISTRIBUTION: _____

6 emailed
2 faxed
1 mailed

+ 73 clerks
for EI 801, 802, 803, 804, and 806

**FLORIDA PUBLIC SERVICE COMMISSION
CASE MANAGEMENT SYSTEM
PARTICIPATING EMAIL ADDRESSES**

PARTY NAME	COMPANY CODE	EMAIL ADDRESS	ADDRESS IN MASTER COMMISSION DIRECTORY
Florida Power & Light Company (Juno08d)		Wade_Litchfield@fpl.com	No
Gulf Power Company	EI804	sdriteno@southernco.com	No
Messer Law Firm (08b)		nhorton@lawfla.com	No
Progress Energy Florida, Inc.	EI801	paul.lewisjr@pgnmail.com	No
Progress Energy Service Company, LLC (08)		john.burnett@pgnmail.com	No
Tampa Electric Company	EI806	Regdept@tecoenergy.com	No

Commission Clerk

From: Commission Clerk
Sent: Monday, July 21, 2008 2:53 PM
Subject: Order or Notice issued by the Public Service Commission (Email ID = 989414)
Attachments: 08-0468ord.doc

The attached order or notice has been issued by the Public Service Commission.

If you have any problems opening this attachment, please contact the Office of Commission Clerk by reply email or at 850-413-6770.

When replying, please do not alter the subject line; as it is used to process your reply.

Thank you.

COMMISSIONERS:
MATTHEW M. CARTER II, CHAIRMAN
LISA POLAK EDGAR
KATRINA J. MCMURRIAN
NANCY ARGENZIANO
NATHAN A. SKOP

STATE OF FLORIDA



OFFICE OF COMMISSION CLERK
ANN COLE
COMMISSION CLERK
(850) 413-6770

Public Service Commission

ADMINISTRATIVE

May 9, 2008

John T. Burnett, Esquire
Progress Energy Service Company, LLC
Post Office Box 14042
St. Petersburg, Florida 33733-4042

Re: Docket No. 080257-EI

Dear Mr. Burnett:

This will acknowledge receipt of petition for approval of net metering tariff, new interconnection agreements, and modification of various related tariff sheets, by Progress Energy Florida, Inc., which was filed in this office on May 7, 2008, and assigned the above-referenced docket number. Appropriate staff members will be advised.

Mediation may be available to resolve any dispute in this docket. If mediation is conducted, it does not affect a substantially interested person's right to an administrative hearing. For more information, contact the Office of General Counsel at (850) 413-6248 or FAX (850) 413-7180.

Office of Commission Clerk

DOCUMENT NUMBER-DATE
03876 MAY-9 08
FPSC-COMMISSION CLERK

Section 1 - Office of Commission Clerk

Docket No. 080257-EI Date Docketed: 05/07/2008 Title: Petition for approval of net metering tariff, new interconnection agreements, and modification of various related tariff sheets, by Progress Energy Florida, Inc.

Company: Progress Energy Florida, Inc.

FPSC, CLK - CORRESPONDENCE
Administrative Parties Consumer
DOCUMENT NO. 03876-08
DISTRIBUTION: _____

Official Filing Date: _____

Expiration: _____

Last Day to Suspend: _____

Referred to: _____

ADM	CLK	CMP	(ECR)	GCL	PIF	RCA	SCR	SGA
			X	X				

(*C) indicates OPR)

Section 2 - OPR Completes and returns to CLK in 10 workdays.

Time Schedule

Program Module A13(a); A4(b)

**WARNING: THIS SCHEDULE IS AN INTERNAL PLANNING DOCUMENT
 IT IS TENTATIVE AND SUBJECT TO REVISION.
 FOR UPDATES CONTACT THE RECORDS SECTION: (850) 413-6770**

Staff Assignments

OPR Staff

Current CASR revision level

Due Dates
 Previous Current

	1.			
	2.			
	3.			
	4.			
	5.			
	6.			
	7.			
Staff Counsel	8.			
	9.			
	10.			
OCRs	11.			
	12.			
	13.			
	14.			
	15.			
	16.			
	17.			
	18.			
	19.			
	20.			
	21.			
	22.			
	23.			
	24.			
	25.			
	26.			
	27.			
	28.			
	29.			
Recommended assignments for hearing and/or deciding this case:	30.			
	31.			
	32.			
Full Commission _____ Commission Panel _____	33.			
Hearing Examiner _____ Staff _____	34.			
	35.			
Date filed with CLK: _____	36.			
	37.			
Initials OPR _____	38.			
Staff Counsel _____	39.			
	40.			

Section 3 - Chairman Completes

Assignments are as follows:

- Hearing Officer(s)

Commissioners						Hrg Exam	Staff
ALL	CT	ED	MM	AG	SK		

Prehearing Officer

Commissioners					ADM
CT	ED	MM	AG	SK	

Where panels are assigned the senior Commissioner is Panel Chairman: the identical panel decides the case.

Where one Commissioner, a Hearing Examiner or a Staff Member is assigned the full Commission decides the case.

Approved: _____
 Date: _____

Section 1 - Office of Commission Clerk

Docket No. 080257-EI Date Docketed: 05/07/2008 Title: Petition for approval of net metering tariff, new interconnection agreements, and modification of various related tariff sheets, by Progress Energy Florida, Inc.

Company: Progress Energy Florida, Inc.

Official Filing Date: _____

Expiration: _____

Last Day to Suspend: _____

Referred to:

ADM CLK CMP (ECR) GCL PIF RCA SCR SGA

(*O) indicates OPR

Section 2 - OPR Completes and returns to CLK in 10 workdays.

Time Schedule

Program Module A13(a); A4(b)

WARNING: THIS SCHEDULE IS AN INTERNAL PLANNING DOCUMENT
IT IS TENTATIVE AND SUBJECT TO REVISION.
FOR UPDATES CONTACT THE RECORDS SECTION: (850) 413-6770

Staff Assignments

OPR Staff

J Chase, E Draper
C Kummer

Current CASR revision level

Due Dates
Previous Current

Staff Counsel

M Brown, E Saylor

OCRs

Recommended assignments for hearing and/or deciding this case:

Full Commission Commission Panel _____
Hearing Examiner _____ Staff _____

Date filed with CLK: 05/16/2008

Initials OPR _____
Staff Counsel _____

		None	Current
1.	Staff Recommendation	NONE	06/19/2008
2.	Agenda	NONE	07/01/2008
3.	Tariff Order	NONE	07/21/2008
4.	Revised CASR Due	NONE	08/20/2008
5.			
6.			
7.			
8.			
9.			
10.			
11.			
12.			
13.			
14.			
15.			
16.			
17.			
18.			
19.			
20.			
21.			
22.			
23.			
24.			
25.			
26.			
27.			
28.			
29.			
30.			
31.			
32.			
33.			
34.			
35.			
36.			
37.			
38.			
39.			
40.			

Section 3 - Chairman Completes

Assignments are as follows:

- Hearing Officer(s)

Commissioners						Hrg Exam	Staff
ALL	CT	ED	MM	AG	SK		
X							

Prehearing Officer

Commissioners					ADM
CT	ED	MM	AG	SK	
					X

Where panels are assigned the senior Commissioner is Panel Chairman: the identical panel decides the case.
Where one Commissioner, a Hearing Examiner or a Staff Member is assigned the full Commission decides the case.

Approved: [Signature]
Date: 05/16/2008

Section 1 - Office of Commission Clerk

Docket No. 080257-EI Date Docketed: 05/07/2008 Title: Petition for approval of net metering tariff, new interconnection agreements, and modification of various related tariff sheets, by Progress Energy Florida, Inc.

Company: Progress Energy Florida, Inc.

Official Filing Date: _____ Expiration: _____

Last Day to Suspend: _____

Referred to:

(○) indicates OPR

ADM CLK (ECR) GCL PIF RCP SGA SSC

		X	X				
--	--	---	---	--	--	--	--

Section 2 - OPR Completes and returns to CLK in 10 workdays.

Time Schedule

Program Module A13(a); A4(b)

WARNING: THIS SCHEDULE IS AN INTERNAL PLANNING DOCUMENT
IT IS TENTATIVE AND SUBJECT TO REVISION.
FOR UPDATES CONTACT THE RECORDS SECTION: (850) 413-6770

Staff Assignments

OPR Staff	J Chase, E Draper C Kummer	1	Current CASR revision level	Due Dates	
				Previous	Current
		1.	Staff Recommendation	NONE	08/21/2008
		2.	Agenda	NONE	09/04/2008
		3.	Tariff Order	NONE	09/24/2008
		4.	Consummating Order if No Protest	NONE	10/17/2008
		5.	Close Docket or Revise CASR	08/20/2008	10/20/2008
		6.			
		7.			
Staff Counsel	M Brown, E Saylor	8.			
		9.			
		10.			
OCRs		11.			
		12.			
		13.			
		14.			
		15.			
		16.			
		17.			
		18.			
		19.			
		20.			
		21.			
		22.			
		23.			
		24.			
		25.			
		26.			
		27.			
		28.			
		29.			
Recommended assignments for hearing and/or deciding this case:		30.			
		31.			
		32.			
Full Commission <input checked="" type="checkbox"/> Commission Panel _____		33.			
Hearing Examiner _____ Staff _____		34.			
		35.			
Date filed with CLK: <u>07/28/2008</u>		36.			
		37.			
Initials OPR _____		38.			
Staff Counsel _____		39.			
		40.			

Section 3 - Chairman Completes

Assignments are as follows:

- Hearing Officer(s)

Commissioners						Hrg Exam	Staff
ALL	CT	ED	MM	AG	SK		
X							

Prehearing Officer

Commissioners					ADM
CT	ED	MM	AG	SK	
					X

Where panels are assigned the senior Commissioner is Panel Chairman:
the identical panel decides the case.
Where one Commissioner, a Hearing Examiner or a Staff Member is assigned the full Commission decides the case.

Approved: _____
Date: 07/28/2008

CT/MS