

Ruth Nettles

From: Trina Collins [TCollins@RSBattorneys.com]
Sent: Tuesday, March 17, 2009 5:05 PM
To: Filings@psc.state.fl.us
Cc: jphoy@uiwater.com; rjdurham@uiwater.com; pcflynn@uiwater.com; dswain@milianswain.com; frankdenjup@att.net; Ralph Jaeger; Martin Friedman; Christian W. Marcelli; Trina Collins
Subject: Filing in Docket No.: 080249-WS; Labrador Utilities, Inc.'s Application for an Increase in Water and Wastewater Rates in Pasco County, Florida
Importance: High
Attachments: PSC Clerk 011 (Response to Data Req 01).ltr.pdf

- a. Martin S. Friedman, Esq.
Christian W. Marcelli, Esq.
Rose, Sundstrom & Bentley, LLP
Sanlando Center
2180 W. State Road 434, Suite 2118
Longwood, FL 32779
Phone: (407) 830-6331
Fax: (407) 830-8522
Email: mfriedman@rsbattorneys.com
cmarcelli@rsbattorneys.com
- b. Docket No.: 080249-WS; Labrador Utilities, Inc.'s Application for an Increase in Water and Wastewater Rates in Pasco County, Florida - Filing the response of Labrador Utilities, Inc., to Staff's first data request dated March 5, 2009.
- c. Labrador Utilities, Inc.
- d. 62 Pages.
- e. Letter to Commission Clerk and responses to Staff's first data request - 62 pages.

DOCUMENT NUMBER-DATE

02303 MAR 18 8

FPSC-COMMISSION CLERK

LAW OFFICES
ROSE, SUNDBSTROM & BENTLEY, LLP
2548 BLAIRSTONE PINES DRIVE
TALLAHASSEE, FLORIDA 32301

FREDERICK L. ASCHAUER, JR.
CHRIS H BENTLEY, P.A.
ROBERT C. BRANNAN
E. MARSHALL DETERDING
JOHN R. JENKINS, P.A.
KYLE L. KEMPER
STEVEN T. MINDLIN, P.A.
CHASITY H. O'STEEN
WILLIAM E. SUNDBSTROM, P.A.
DIANE D. TREMOR, P.A.
JOHN L. WHARTON
ROBERT M. C. ROSE (1924-2006)

(850) 877-6555
FAX (850) 656-4029
www.rsbatorneys.com

REPLY TO CENTRAL FLORIDA OFFICE

March 17, 2009

E-FILING

Ann Cole, Commission Clerk
Office of Commission Clerk
Florida Public Service Commission
2540 Shumard Oak Boulevard
Tallahassee, FL 32399

RE: Docket No. 080249-WS; Labrador Utilities, Inc.'s Application for an Increase in Water and Wastewater Rates in Pasco County, Florida
Our File No.: 30057.157

Dear Ms. Cole:

Enclosed for filing in the above-referenced docket is the response of Labrador Utilities, Inc. (the "Company" or "Utility") to Staff's first data request dated March 5, 2009.

Please provide staff with the following information to facilitate our review of Labrador Utilities, Inc.'s application.

1. Please provide all support documentation, including but not limited to, workpapers, bases and/or assumptions for the pro forma expense adjustments reflected on MFR Schedule B-3, Page 1 of 3, Lines 39 through 54 and Page 2 of 3, Lines 1 through 7.

RESPONSE:

(1) The first adjustment is a \$1,943 increase to water O&M and a \$4,249 increase to wastewater O&M. For this adjustment, please see the attached document titled "RAI #1, item (1), support for B-3, lines 39-54". The adjustment to each account is the adjusted test year amount found on the B-5 and B-6, multiplied by the 2.39% index factor. The second adjustment is a \$50,727 increase to salaries. For this adjustment, please see the attached document titled "2007 TY Florida Rate Cases". The \$5,571 and the \$5,452 are the total of the \$6,467 increase to operators' salaries, the

DOCUMENT NUMBER-DATE

02303 MAR 18 8

FPSC-COMMISSION CLERK

CENTRAL FLORIDA OFFICE
SANLANDO CENTER
2180 W. STATE ROAD 434, SUITE 2118
LONGWOOD, FLORIDA 32779
(407) 830-6331
FAX (407) 830-8522

MARTIN S. FRIEDMAN, P.A.
BRIAN J. STREET

CHRISTIAN W. MARCELLI, OF COUNSEL
(LICENSED IN NEW YORK ONLY)

\$3,942 increase to office salaries, the \$1,073 increase to officers' salaries, and the (\$459) increase to captime shown on the lead sheet. The \$91 and \$89 are the total of the \$180 increase to benefits. These amounts were then allocated between water and wastewater based on ERCs for Labrador.

The support behind the salary, captime, and benefit amounts are shown on the attached workpapers titled, "w/p a" and "w/p b". Each corporate and Florida employee's current salary and overtime are summed, and then a cost of living adjustment of 3.5% of the total salary is added to arrive at the employee's total pro forma salary. This pro forma salary is then applied to Labrador based on a percentage. The percentage is derived by taking Labrador's ERC divided by the total ERC basis for each employee. The ERCs and percentages for Florida employees are found on the attached workpapers titled, "w/p c-2" and "w/p c-3", and the ERCs and percentages for corporate employees are found on the attached workpaper titled, "w/p c-1". The Company is also providing herewith the workpaper support for each employee's current salary. For the employees who were recently hired and no salary information existed, the Company performed an average of the salaries for that person's position, and applied that average as the current salary.

2. With regard to the "Tank maintenance and repair" project reflected on MFR Schedule B-10, Line 1,* please provide the following:
 - a. A detailed statement why this project is necessary;
 - b. A copy [of] any report or other documentation completed which reflect[s] the findings or results from this project;
 - c. A copy of all support documentation, including but not limited to, invoices, contracts, estimates, quotes, assumptions, workpapers, bases, and/or other documentation for the actual cost incurred from the commencement of the project to date and for the budgeted unamortized amount of \$46,204; and
 - d. State the primary operation and maintenance (O&M) expense account name and number that the Utility used to record this project in the 2007 test year, and, if more than one O&M expense account has been used to record this project, please provide a detail[ed] breakdown by amount and account of how the Utility's is recording this project in the test year.

RESPONSE:

(2)(a) Rule 62-555.350(2), Florida Administrative Code, states that "Finished-drinking-water storage tanks, including conventional hydropneumatic tanks with an access manhole...shall be checked at least annually to ensure that hatches are closed and screens are in place; shall be cleaned at least once every five years to remove biogrowths, calcium or iron/manganese deposits, and sludge from inside the tanks; and shall be inspected for structural and coating integrity at least once every five years by personnel under the responsible charge of a professional engineer licensed in Florida." The project identified as "Tank maintenance and repair" on Schedule B-10, Line 1 reflects the cost of refurbishing the interior and exterior of the 34,000 gallon finished water storage tank at the Labrador Water Treatment Plant in 2005 so as to maintain compliance with the above-referenced rule.

(2)(b) Attached hereto is the inspection report conducted by Liquid Engineering Corporation (LCE) in 2004. LCE's report was used in planning the scope of work needed to bring this storage tank up to DEP and OSHA standards. The work was completed in 2006. The project scope included:

- modification of the well pump and high service pump controls to allow for the temporary bypass of the standpipe during construction,
- removal of any accumulated sediment from the interior of the tank,
- removal of the original tank top due to severe corrosion and the likelihood of imminent failure,
- fabrication and installation of a new steel tank top including an adequately sized and screened tank vent to prevent vacuum conditions from occurring,
- sand blasting of all interior surfaces of the tank to SPCC #10 (near white) and then coating the interior with an industrial epoxy protection system meeting NSF 60 standards to a thickness of 8-10 mils of dry film,
- sand blasting of all exterior steel surfaces of the tank to SPCC #6 (commercial blast) and then applying an industrial grade alkyd protective coating,
- replacement of the access ladder and cage,

- installation of a safety cable on the new access ladder to provide fall protection,
- replacement of the water level controls and alarm equipment,
- modification of the overflow pipe,
- installation of safety handrail on the tank top around the roof manway,
- provide a minimum of 4 inches clearance below the top of the concrete foundation by regrading the circumference of the tank, and
- disinfection and testing of the tank interior prior to placing the tank back in service.

(2)(c) Please see the attached document titled, "Deferred Charges GL" and matching invoices. These invoices support the \$46,204, and are being amortized over five years.

(2)(d) The monthly amortization expense for this project is recorded in account 675/775.

** Note: The RAI refers to MFR Schedule B-10, however, the utility believes the MFR schedule referenced in item (2) is B-11.*

3. The following items are related to Miscellaneous Service Charges.

RESPONSE:

(3). The Utility is requesting miscellaneous service charges of \$21.00 during business hours, and \$42.00 after hours (which charges are consistent with what this Commission has recently approved for other subsidiaries of Utilities, Inc.), in order to create uniformity in the implementation of such charges. The Public Service Commission, in Docket Nos.: 060255-SU, 060256-SU, 060257-WS, 060254-SU, and 060261-WS, has recently authorized other subsidiaries of Utilities, Inc., to implement the same miscellaneous service charges requested by Mid-County Services, Inc. in this proceeding. In each of those cases the Order acknowledges that the miscellaneous service charges contained in the now repealed Staff Advisory Bulletin #13 are outdated and analyzed more recent Commission determinations. The Commission concluded that miscellaneous service charges of \$21.00 for business hours, and \$42.00 for after business

hours were "cost based, reasonable, and consistent with these we have approved for other utilities" (See Order No. PSC-07-0199-PAA-WS). A calculation of the costs comprising those fees is as follows:

During Business Hours:

Item:	Cost:
Labor (\$31.50/hr. x 0.5 hours)	\$15.63
Transportation	\$ 5.00
Total	\$20.63


After Business Hours:

Item:	Cost:
Labor (\$46.88/hr. x 0.75 hours)**	\$35.16
Transportation	\$ 6.00
Total	\$41.16

**Represents time and half wage and the longer time it takes an employee to get to the customer's property after hours.

Should you or the Staff have any questions, please do not hesitate to give me a call.

Very truly yours,


CHRISTIAN W. MARCELLI
Of Counsel

CWM/tlc
Enclosures

cc: John Hoy, Chief Regulatory Officer (w/enclosures) (via e-mail)
Rick Durham, Regional Vice President for Operations (w/enclosures) (via e-mail)
Patrick C. Flynn, Regional Director (w/enclosures) (via e-mail)
Ms. Deborah Swain (w/enclosures) (via e-mail)
Mr. Frank Seidman (w/enclosures) (via e-mail)
Ralph Jaeger, Esquire, Office of General Counsel (w/enclosures) (via e-mail)

LABRADOR UTILITIES, INC.
DOCKET NO. 080249-WS
RAI #1, ITEM (1)
SUPPORT FOR B-3, LINES 39-54

WATER:

<u>A/C #</u>	<u>Account Name</u>	<u>Adjusted Test Year Amount</u>	<u>Index Increase</u>	<u>Pro Forma Adjustment</u>
711	Sludge Hauling	\$0	2.39%	\$0
615/715	Purchased Power	4,417	2.39%	106
618/718	Chemicals	2,880	2.39%	69
620/720	Materials and Supplies	7,010	2.39%	168
632/732	Contractual Services - Accounting	1,170	2.39%	28
633/733	Contractual Services - Legal	547	2.39%	13
635/735	Contractual Services - Testing	996	2.39%	24
636/736	Contractual Services - Other	8,595	2.39%	205
641/741	Rental Expense	24,836	2.39%	594
650/750	Transportation Expense	2,830	2.39%	68
659/759	Insurance Expense	5,924	2.39%	142
670/770	Bad Debt Expense	184	2.39%	4
675/775	Miscellaneous Expense	21,829	2.39%	522

SEWER:

<u>A/C #</u>	<u>Account Name</u>	<u>Adjusted Test Year Amount</u>	<u>Index Increase</u>	<u>Pro Forma Adjustment</u>
711	Sludge Hauling	\$34,185	2.39%	\$817
615/715	Purchased Power	30,877	2.39%	738
618/718	Chemicals	23,669	2.39%	566
620/720	Materials and Supplies	7,420	2.39%	177
632/732	Contractual Services - Accounting	1,145	2.39%	27
633/733	Contractual Services - Legal	536	2.39%	13
635/735	Contractual Services - Testing	1,833	2.39%	44
636/736	Contractual Services - Other	8,410	2.39%	201
641/741	Rental Expense	24,304	2.39%	581
650/750	Transportation Expense	2,770	2.39%	66
659/759	Insurance Expense	5,797	2.39%	139
670/770	Bad Debt Expense	180	2.39%	4
675/775	Miscellaneous Expense	36,654	2.39%	876

**2007 TY FLORIDA RATE CASES
SALARY ADJUSTMENT SUMMARY**

	<u>Labrador Utilities, Inc.</u>		
		Sum (a)	\$5,572
		Sum (b)	\$5,452
Operations (601/701):		Sum (c)	\$91
From w/p a	\$73,237	Sum (d)	\$89
Per books	66,770		
Adjustment	<u>\$6,467</u>		
W	<u>\$3,269</u>	(a)	
WW	<u>\$3,198</u>	(b)	
Office (601/701):			
From w/p a	\$29,802		
Per books	25,860		
Adjustment	<u>\$3,942</u>		
W	<u>\$1,992</u>	(a)	
WW	<u>1,950</u>	(b)	
Officers (603/703):			
From w/p a	\$6,397		
Per books	5,324		
Adjustment	<u>\$1,073</u>		
W	<u>\$542</u>	(a)	
WW	<u>531</u>	(b)	
Captive Adjustment (601/701):			
From w/p b	(\$6,012)		
Per books	(5,554)		
Adjustment	<u>(\$459)</u>		
W	<u>(\$232)</u>	(a)	
WW	<u>(\$227)</u>	(b)	
Benefits (604/704):			
From w/p a	\$21,916		
Per books	21,736		
Adjustment	<u>\$180</u>		
W	<u>\$91</u>	(c)	
WW	<u>\$89</u>	(d)	

2007 TY FL RATE CASES
SALARY ADJUSTMENT

w/p a

<u>Totals</u>											
<u>Name</u>	<u>Position</u>	<u>Current Salary</u>	<u>2007 Overtime</u>	<u>Total</u>	<u>Salary 3.5% Increase</u>	<u>Total Pro Forma Salary</u>	<u>Pro Forma Pension</u>	<u>Pro Forma 401K</u>	<u>Pro Forma Health Insurance</u>	<u>Pro Forma Other Benefits</u>	
Alday, Christopher	Meter Reader	\$24,045	\$0	\$24,045	\$842	\$24,886	\$747	\$995	\$6,564	\$532	
Alday, James	Operator	32,739	1,431	34,170	1,196	35,366	1,061	1,415	6,564	532	
Anderson, Daniel	Operator	42,474	3,788	46,262	1,619	47,881	1,436	1,915	6,564	532	
Austin Jr, Arthur	Field Technician	33,654	607	34,261	1,199	35,460	1,064	1,418	6,564	532	
Bailey, Alan	Operator	36,421	1,893	38,314	1,341	39,655	1,190	1,586	6,564	532	
Becker, Jeffrey	Operator	43,014	1,830	44,844	1,570	46,414	1,392	1,857	6,564	532	
Bishop, Alvin	Operator	27,685	2,843	30,528	1,068	31,596	948	1,264	6,564	532	
Blasco, Christopher	Meter Reader	29,765	352	30,117	1,054	31,171	935	1,247	6,564	532	
Boersma, David	Operator	37,051	2,301	39,352	1,377	40,730	1,222	1,629	6,564	532	
Bonagura, John	Business Manager	69,798	-	69,798	2,443	72,241	2,167	2,890	6,564	532	
Brown, Donna	Meter Reader	23,920	-	23,920	837	24,757	743	990	6,564	532	
Buono, Robert	Operator	35,880	2,074	37,954	1,328	39,283	1,178	1,571	6,564	532	
Callahan, Robert	Operator	31,366	-	31,366	1,098	32,464	974	1,299	6,564	532	
Cardinal, Anthony	Operator	32,302	405	32,708	1,145	33,852	1,016	1,354	6,564	532	
Carver, Nathaniel	Project Manager	64,272	-	64,272	2,250	66,522	1,996	2,661	6,564	532	
Chard, Ronald	Cross Connection Specialist	35,526	1,180	36,706	1,285	37,991	1,140	1,520	6,564	532	
Coates, Bill	Area Manager	60,610	-	60,610	2,121	62,731	1,882	2,509	6,564	532	
Coffee Jr., John	Operator	33,426	4,404	37,830	1,324	39,154	1,175	1,566	6,564	532	
Cook, James	Lead Operator	41,101	4,369	45,469	1,591	47,061	1,412	1,882	6,564	532	
Cooler, Ronald	Operator	34,445	4,220	38,664	1,353	40,018	1,201	1,601	6,564	532	
Cooper, Robert	Operator	39,853	819	40,672	1,424	42,095	1,263	1,684	6,564	532	
Davis, Neville	Field Technician (PT)	30,139	158	30,297	1,060	31,358	-	-	-	-	
Devers, Joe	Lead Operator	46,800	1,451	48,251	1,689	49,940	1,498	1,998	6,564	532	
Dodd, Donald	Lead Operator	41,600	300	41,900	1,467	43,367	1,301	1,735	6,564	532	
Durham, Rick	Regional Vice President	140,000	-	140,000	4,900	144,900	4,347	5,796	6,564	532	
Ebert, Shawn	Field Technician	27,914	1,493	29,406	1,029	30,435	913	1,217	6,564	532	
Eskew, James	Operator	40,830	6,779	47,610	1,666	49,276	1,478	1,971	6,564	532	
Eubanks, Brian	Operator	37,051	2,301	39,352	1,377	40,730	1,222	1,629	6,564	532	
Finch, Allan	Operator	32,885	1,476	34,361	1,203	35,563	1,067	1,423	6,564	532	
Finshirsh, Jeffrey	Lead Operator	33,654	2,485	36,140	1,265	37,404	1,122	1,496	6,564	532	
Flynn, Patrick	Regional Director	118,679	-	118,679	4,154	122,832	3,685	4,913	6,564	532	
Franklin, Kennedy	Field Technician	30,285	171	30,456	1,066	31,522	946	1,261	6,564	532	
Galarza, Richard	Field Technician	28,122	2,394	30,515	1,068	31,583	947	1,263	6,564	532	
Garcia Jr, Ismael	Operator	40,373	6,331	46,704	1,635	48,338	1,450	1,934	6,564	532	
Gentilucci, Domenic	Area Manager	54,079	-	54,079	1,893	55,971	1,679	2,239	6,564	532	
Godwin, Patrick	Lead Operator	43,098	8,862	51,960	1,819	53,779	1,613	2,151	6,564	532	
Gongre, Bryan	Regional Manager	80,648	-	80,648	2,823	83,471	2,504	3,339	6,564	532	
Gosnell, Scotty	Project Manager	62,700	-	62,700	2,195	64,895	1,947	2,596	6,564	532	
Grainger Jr, Leroy	Field Technician (PT)	30,139	158	30,297	1,060	31,358	-	-	-	-	
Gunther, Mathew	Operator	35,797	4,522	40,319	1,411	41,730	1,252	1,669	6,564	532	

2007 TY FL RATE CASES
SALARY ADJUSTMENT

w/p a

Habery, Stephen	Lead Operator	54,579	1,041	55,620	1,947	57,567	1,727	2,303	6,564	532
Hamilton, Don	Operator	34,362	1,228	35,590	1,246	36,835	1,105	1,473	6,564	532
Hampton, Jerome	Operator	39,187	1,790	40,977	1,434	42,411	1,272	1,696	6,564	532
Haws, Scotty	Safety Manager	73,673	-	73,673	2,579	76,252	2,288	3,050	6,564	532
Hogue, Raymond	Operator	37,939	2,147	40,086	1,403	41,489	1,245	1,660	6,564	532
Hollister, Jimmie	Field Technician	27,955	1,866	29,822	1,044	30,865	926	1,235	6,564	532
Holsapple, Roger	Lead Operator	42,973	10,691	53,663	1,878	55,542	1,666	2,222	6,564	532
Keys, Thomas	Lead Operator	48,422	1,086	49,509	1,733	51,241	1,537	2,050	6,564	532
Kuhns, Joseph	Lead Operator	43,950	4,109	48,059	1,681	49,720	1,492	1,989	6,564	532
Leard, Mark	Field Technician	27,997	1,394	29,391	1,029	30,420	913	1,217	6,564	532
Learned, Scott	Field Technician	27,706	505	28,211	987	29,198	876	1,168	6,564	532
Lorenzo, Alexander	Operator	37,315	3,729	41,045	1,437	42,481	1,274	1,699	6,564	532
Marinelli, John	Field Supervisor	62,308	-	62,308	2,181	64,489	1,935	2,580	6,564	532
McPhee, Allison	Lead Operator	41,205	2,185	43,390	1,519	44,909	1,347	1,796	6,564	532
Morrell, Matthew	Field Technician	27,768	1,893	29,661	1,038	30,699	921	1,228	6,564	532
Neal, William	Area Manager	58,970	-	58,970	2,064	61,034	1,831	2,441	6,564	532
Overton, Michael	Field Technician	37,773	1,047	38,820	1,359	40,178	1,205	1,607	6,564	532
Parrish, Raymond	Operator	35,568	1,860	37,428	1,310	38,738	1,162	1,550	6,564	532
Pennington, Jonathan	Field Technician	27,040	1,022	28,062	982	29,044	871	1,162	6,564	532
Pfouts, Steve	Operator	42,370	2,155	44,525	1,558	46,083	1,382	1,843	6,564	532
Phillips, Christopher	Operator	33,925	-	33,925	1,187	35,112	1,053	1,404	6,564	532
Pinder, Jeffrey	Field Supervisor	45,427	3,504	48,931	1,713	50,644	1,519	2,026	6,564	532
Powell, Trevor	Operator	34,445	2,061	36,506	1,278	37,784	1,134	1,511	6,564	532
Raines, Craig	Lead Operator	42,182	2,583	44,766	1,567	46,333	1,390	1,853	6,564	532
Remigio, Roberto	Meter Reader	24,190	84	24,274	850	25,124	754	1,005	6,564	532
Roberts Jr., Eddie	Operator	41,413	1,806	43,219	1,513	44,732	1,342	1,789	6,564	532
Schneider, Keith	Operator	34,590	632	35,222	1,233	36,455	1,094	1,458	6,564	532
Schultz, Kevin	Field Technician	30,139	383	30,522	1,068	31,591	948	1,264	6,564	532
Schwades, Charles	Area Manager	54,252	-	54,252	1,899	56,151	1,685	2,246	6,564	532
Shoffstall, David	Lead Operator	41,662	4,439	46,101	1,614	47,715	1,431	1,909	6,564	532
Slue, Mickey	Field Technician	36,878	1,015	37,893	1,326	39,220	1,177	1,569	6,564	532
Sillitoe, Kathy	Area Manager	58,981	-	58,981	2,064	61,046	1,831	2,442	6,564	532
Sillitoe, Terry	Operator (PT)	32,302	-	32,302	1,131	33,433	-	-	-	-
Smith, Donald	Field Technician	33,446	1,047	34,494	1,207	35,701	1,071	1,428	6,564	532
Stefano, Barry	Field Technician	31,491	852	32,343	1,132	33,475	1,004	1,339	6,564	532
Stewart, Malcolm	Area Manager	62,084	-	62,084	2,173	64,257	1,928	2,570	6,564	532
Sudol, Corey	Lead Operator	39,000	4,375	43,375	1,518	44,893	1,347	1,796	6,564	532
Swegheimer, James	Operator	46,259	1,305	47,564	1,665	49,229	1,477	1,969	6,564	532
Szczepkowski, Stephen	Operator	44,054	583	44,638	1,562	46,200	1,386	1,848	6,564	532
Taylor, Kenneth	Operator	30,846	770	31,616	1,107	32,723	982	1,309	6,564	532
Trant, David	Field Technician	27,997	332	28,328	991	29,320	880	1,173	6,564	532
Tzareff, Paul	Field Technician	25,958	1,881	27,839	974	28,814	864	1,153	6,564	532
Vanmeter Jr, Nathan	Lead Operator	40,851	1,102	41,953	1,468	43,422	1,303	1,737	6,564	532

2007 TY FL RATE CASES
SALARY ADJUSTMENT

w/p a

Wakefield, Roland	Lead Operator	43,680	-	43,680	1,529	45,209	1,356	1,808	6,564	532
Watkins, Cedric	Field Technician	31,949	210	32,159	1,126	33,285	999	1,331	6,564	532
White, Ronald	Field Supervisor	45,178	1,888	47,066	1,647	48,713	1,461	1,949	6,564	532
Wierzbicki, Anthony	Project Manager	70,516	-	70,516	2,468	72,984	2,190	2,919	6,564	532
Williams, Elisa	Operator	40,144	2,772	42,916	1,502	44,418	1,333	1,777	6,564	532
Wilson, Michael	Regional Manager	79,002	-	79,002	2,765	81,767	2,453	3,271	6,564	532
Woodside, Michael	Operator (PT)	37,648	53	37,701	1,320	39,020	-	-	-	-
Worrell, David	Operator	37,440	837	38,277	1,340	39,617	1,189	1,585	6,564	532
Wright, Jason	Operator	38,646	4,251	42,897	1,501	44,399	1,332	1,776	6,564	532
Wright, Thomas	Field Technician	33,259	23	33,282	1,165	34,447	1,033	1,378	6,564	532
Abbott, Loretta	Office Clerk (1)	29,328	3,645	32,973	1,154	34,128	1,024	1,365	6,564	532
Bennett, Kimberly	Customer Service Representative (1)	29,536	4,568	34,104	1,194	35,298	1,059	1,412	6,564	532
Ceballos, Isabel	Customer Service Representative (1)	28,683	3,574	32,257	1,129	33,386	1,002	1,335	6,564	532
Chandler, Matthew	Accounts Receivable Clerk (1)	30,867	538	31,405	1,099	32,504	975	1,300	6,564	532
Christian, Elise	Customer Service Representative (1)	50,731	3,025	53,756	1,881	55,638	1,669	2,226	6,564	532
Dipasqual, Susan	Staff Assistant (1)	30,139	-	30,139	1,055	31,194	936	1,248	6,564	532
Hanks, Peggy	Office Clerk (1)	29,120	-	29,120	1,019	30,139	904	1,206	6,564	532
Mayeski, Loric	Customer Service Representative (1)	33,783	3,878	37,662	1,318	38,980	1,169	1,559	6,564	532
Loeffel, Leanne	Customer Service Representative (1)	33,783	3,878	37,662	1,318	38,980	1,169	1,559	6,564	532
Noell, Sandra	Office Clerk (1)	29,952	-	29,952	1,048	31,000	930	1,240	6,564	532
Patricio, Reginald	Accounts Receivable Clerk (1)	30,867	538	31,405	1,099	32,504	975	1,300	6,564	532
Paulk, Stella	Customer Service Representative (1)	34,840	4,332	39,172	1,371	40,543	1,216	1,622	6,564	532
Raponi, Ann	Office Clerk (1)	32,677	1,964	34,641	1,212	35,853	1,076	1,434	6,564	532
Sasic, Karen	Office Manager (1)	60,349	-	60,349	2,112	62,461	1,874	2,498	6,564	532
Sillitoe, Jacqueline	Customer Service Representative (1)	25,126	3,892	29,019	1,016	30,034	901	1,201	6,564	532
Trovinger, Ferrellyn	Accounts Payable Clerk (1)	32,240	5,160	37,400	1,309	38,709	1,161	1,548	6,564	532
Armoux, Diane	Payroll Support	51,750	1,335	53,085	1,858	54,943	1,648	2,198	6,564	532
Barrett, Jason	Regulatory Accountant	49,300	-	49,300	1,726	51,026	1,531	2,041	6,564	532
Bell, William	Operations Director	82,800	-	82,800	2,898	85,698	2,571	3,428	6,564	532
Casados Jr, Jimmy	IT Manager	105,040	-	105,040	3,676	108,716	3,261	4,349	6,564	532
Chang, Tae	Accounts Payable Clerk (PT)	27,040	-	27,040	946	27,986	-	-	-	-
Chlebowicz, Agnes	Administrative Assistant	35,360	-	35,360	1,238	36,598	1,098	1,464	6,564	532
Crossett, Lisa	Chief Operations Officer	203,500	-	203,500	7,123	210,623	6,319	8,425	6,564	532
Dann, Brian	IT Specialist	51,000	-	51,000	1,785	52,785	1,584	2,111	6,564	532
Dave, Hardik	IT Specialist	41,496	2,132	43,628	1,527	45,155	1,355	1,806	6,564	532
Di Marca, Michelle	Senior Accountant	66,885	-	66,885	2,341	69,226	2,077	2,769	6,564	532
Dryjanski, Michael	Regulatory Accounting Manager	99,552	-	99,552	3,484	103,036	3,091	4,121	6,564	532
Duggan, Michael	Accountant	50,000	-	50,000	1,750	51,750	1,553	2,070	6,564	532
Federico, Antoinette	Accounts Payable Manager	57,000	-	57,000	1,995	58,995	1,770	2,360	6,564	532
Friedman, Avelina	Account Manager	51,418	7,981	59,398	2,079	61,477	1,844	2,459	6,564	532
Georgiev, Lena	Regulatory Manager	79,695	-	79,695	2,789	82,484	2,475	3,299	6,564	532
Gomez, Samuel	Data Entry Clerk	38,397	450	38,847	1,360	40,207	1,206	1,608	6,564	532
Granite, Deborah	Bill Clerk	49,379	4,935	54,314	1,901	56,215	1,686	2,249	6,564	532

2007 TY FL RATE CASES
SALARY ADJUSTMENT

w/p a

Guidice, Joyce	Benefits Specialist	53,830	841	54,671	1,913	56,585	1,698	2,263	6,564	532
Harrell, Janice	Accounts Payable Clerk	35,006	3,326	38,332	1,342	39,674	1,190	1,587	6,564	532
Harris, Khalifat	Operations Analyst	62,499	-	62,499	2,187	64,686	1,941	2,587	6,564	532
Haynes Jr, John	Director of Finance	125,000	-	125,000	4,375	129,375	3,881	5,175	6,564	532
Hopkins, John	Training and Development Manager	90,000	-	90,000	3,150	93,150	2,795	3,726	6,564	532
Hoy, John	Chief Regulatory Officer	191,500	-	191,500	6,703	198,203	5,946	7,928	6,564	532
Kazlo, Allen	Director of Accounting	125,000	-	125,000	4,375	129,375	3,881	5,175	6,564	532
Kim, Christine	Accounting Manager	91,413	-	91,413	3,199	94,612	2,838	3,784	6,564	532
Krugler, Adrienne	Customer Service Representative Manager	66,353	-	66,353	2,322	68,676	2,060	2,747	6,564	532
Krugman, Stacy	Executive Assistant	67,275	-	67,275	2,355	69,630	2,089	2,785	6,564	532
Lingeman, Samuel	Financial Analyst	55,600	-	55,600	1,946	57,546	1,726	2,302	6,564	532
Lubertozzi, Steven	Chief Financial Officer	191,500	-	191,500	6,703	198,203	5,946	7,928	6,564	532
Luppino, Nancy	Account Manager	50,003	491	50,494	1,767	52,262	1,568	2,090	6,564	532
Luppino, Phyllis	Account Manager	42,744	6,582	49,326	1,726	51,052	1,532	2,042	6,564	532
Martinov, Slobodan	Accountant	50,000	-	50,000	1,750	51,750	1,552	2,070	6,564	532
Marzouk, Michelle	Administrative Clerk (PT)	31,075	-	31,075	1,088	32,163	-	-	-	-
Matthews, Mary	Billing Specialist	60,736	44	60,780	2,127	62,907	1,887	2,516	6,564	532
McGrain, Pamela	Data Specialist	51,189	2,630	53,819	1,884	55,702	1,671	2,228	6,564	532
McLean, Pamela	Payroll Support	54,400	-	54,400	1,904	56,304	1,689	2,252	6,564	532
Miranda, Margarita	Account Manager	41,142	2,882	44,024	1,541	45,565	1,367	1,823	6,564	532
Neyzelman, Dimitry	Senior Regulatory Accountant	72,582	-	72,582	2,540	75,123	2,254	3,005	6,564	532
Ostler, Tom	IT Manager	110,000	-	110,000	3,850	113,850	3,415	4,554	6,564	532
Pannos, Nicholas	IT Specialist	40,997	850	41,846	1,465	43,311	1,299	1,732	6,564	532
Paule, Nancy	Receptionist	35,048	180	35,228	1,233	36,461	1,094	1,458	6,564	532
Pietras, Victoria	Senior Accountant	60,000	-	60,000	2,100	62,100	1,863	2,484	6,564	532
Povich, Erin	Regulatory Accountant	53,061	-	53,061	1,857	54,918	1,648	2,197	6,564	532
Rochow, Michelle	Regulatory Accountant	57,478	-	57,478	2,012	59,490	1,785	2,380	6,564	532
Rose, Kendra	Safety Coordinator	67,600	-	67,600	2,366	69,966	2,099	2,799	6,564	532
Scherer, William	Tax Accountant	75,501	-	75,501	2,643	78,143	2,344	3,126	6,564	532
Schiopu, Mircea	Mail Clerk	34,216	2,739	36,955	1,293	38,249	1,147	1,530	6,564	532
Schumacher, Lawrence	President	349,300	-	349,300	12,226	361,526	10,846	14,461	6,564	532
Serrill III, George	Project Manager	77,200	-	77,200	2,702	79,902	2,397	3,196	6,564	532
Shrake, Brian	Regulatory Accountant	45,562	-	45,562	1,595	47,157	1,415	1,886	6,564	532
Simmons, Rodney	Office Specialist	62,400	-	62,400	2,184	64,584	1,938	2,583	6,564	532
Smutny Jr., Thomas	Systems Specialist	61,050	-	61,050	2,137	63,187	1,896	2,527	6,564	532
Sowell, George	Accounting Manager	72,500	-	72,500	2,537	75,037	2,251	3,001	6,564	532
Stone, Leslie	Executive Assistant	63,800	-	63,800	2,233	66,033	1,981	2,641	6,564	532
Stover, John	General Counsel	207,000	-	207,000	7,245	214,245	6,427	8,570	6,564	532
Sudduth, Donald	Business Director	160,700	-	160,700	5,624	166,324	4,990	6,653	6,564	532
Triggiani, Elizabeth	Human Resources Generalist	39,000	907	39,907	1,397	41,304	1,239	1,652	6,564	532
Valrie, Lawanda	Administrative Clerk	29,994	-	29,994	1,050	31,043	931	1,242	6,564	532
Weeks, Kirsten	Regulatory Accounting Manager	81,510	-	81,510	2,853	84,363	2,531	3,375	6,564	532
Williams, John	Director of Governmental Affairs	102,000	-	102,000	3,570	105,570	3,167	4,223	6,564	532

2007 TY FL RATE CASES
SALARY ADJUSTMENT

w/p a

Yap Jr., Lowell	Regulatory Accountant	42,436	-	42,436	1,485	43,921	1,318	1,757	6,564	532
Yount, Darrin	Director of Strategic Planning	106,605	-	106,605	3,731	110,336	3,310	4,413	6,564	532
Zawadzki, Diane	Operations Analyst	69,966	-	69,966	2,449	72,415	2,172	2,897	6,564	532
		\$9,338,425	\$227,233	\$9,565,658	\$334,798	\$9,900,456	\$291,154	\$388,206	\$1,089,624	\$88,312

2007 TY FL RATE CASES
SALARY ADJUSTMENT

w/p a

2007 TY FL RATE CASES
SALARY ADJUSTMENT

w/p a

Labrador Utilities, Inc.

<u>Name</u>	<u>Position</u>	<u>Current Salary</u>	<u>2007 Overtime</u>	<u>Total</u>	<u>Salary 3% Increase</u>	<u>Total Pro Forma Salary</u>	<u>Pro Forma Pension</u>	<u>Pro Forma 401K</u>	<u>Pro Forma Health Insurance</u>	<u>Pro Forma Other Benefits</u>
Alday, Christopher	Meter Reader									
Alday, James	Operator									
Anderson, Daniel	Operator									
Austin Jr, Arthur	Field Technician									
Bailey, Alan	Operator									
Becker, Jeffrey	Operator									
Bishop, Alvin	Operator									
Blasco, Christopher	Meter Reader									
Boersma, David	Operator									
Bonagura, John	Business Manager	1,053	-	1,053	37	1,090	33	44	99	8
Brown, Donna	Meter Reader									
Buono, Robert	Operator									
Callahan, Robert	Operator									
Cardinal, Anthony	Operator									
Carver, Nathaniel	Project Manager									
Chard, Ronald	Cross Connection Specialist	2,917	97	3,014	105	3,119	94	125	539	44
Coates, Bill	Area Manager									
Coffee Jr., John	Operator									
Cook, James	Lead Operator									
Cooler, Ronald	Operator									
Cooper, Robert	Operator									
Davis, Neville	Field Technician (PT)	2,852	15	2,867	100	2,967	-	-	-	-
Devers, Joe	Lead Operator									
Dodd, Donald	Lead Operator									
Durham, Rick	Regional Vice President	2,112	-	2,112	74	2,186	66	87	99	8
Ebert, Shawn	Field Technician									
Eskew, James	Operator									
Eubanks, Brian	Operator									
Finch, Allan	Operator									
Finchirsh, Jeffrey	Lead Operator									
Flynn, Patrick	Regional Director	2,214	-	2,214	77	2,291	69	92	122	10
Franklin, Kennedy	Field Technician	3,305	19	3,324	116	3,440	103	138	716	58
Galarza, Richard	Field Technician									
Garcia Jr, Ismael	Operator									
Gentilucci, Domenic	Area Manager									
Godwin, Patrick	Lead Operator									
Gongre, Bryan	Regional Manager									
Gosnell, Scotty	Project Manager									
Grainger Jr, Leroy	Field Technician (PT)									
Gunther, Mathew	Operator									

2007 TY FL RATE CASES
SALARY ADJUSTMENT

w/p a

Habery, Stephen	Lead Operator									
Hamilton, Don	Operator									
Hampton, Jerome	Operator									
Haws, Scotty	Safety Manager	1,111	-	1,111	39	1,150	35	46	99	8
Hogue, Raymond	Operator									
Hollister, Jimmie	Field Technician									
Holsapple, Roger	Lead Operator									
Keys, Thomas	Lead Operator									
Kuhns, Joseph	Lead Operator									
Leard, Mark	Field Technician									
Learned, Scott	Field Technician									
Lorenzo, Alexander	Operator									
Marinelli, John	Field Supervisor									
McPhee, Allson	Lead Operator									
Morrell, Matthew	Field Technician									
Neal, William	Area Manager	4,599	-	4,599	161	4,760	143	190	512	41
Overton, Michael	Field Technician									
Parrish, Raymond	Operator									
Pennington, Jonathan	Field Technician									
Pfouts, Steve	Operator									
Phillips, Christopher	Operator									
Pinder, Jeffrey	Field Supervisor									
Powell, Trevor	Operator									
Raines, Craig	Lead Operator									
Remigio, Roberto	Meter Reader									
Roberts Jr., Eddie	Operator									
Schneider, Keith	Operator									
Schultz, Kevin	Field Technician									
Schwades, Charles	Area Manager									
Shoffstall, David	Lead Operator									
Shue, Mickey	Field Technician									
Sillitoe, Kathy	Area Manager									
Sillitoe, Terry	Operator (PT)									
Smith, Donald	Field Technician									
Stefano, Barry	Field Technician									
Stewart, Malcolm	Area Manager									
Sudol, Corey	Lead Operator									
Swegheimer, James	Operator									
Szczepkowski, Stephen	Operator									
Taylor, Kenneth	Operator									
Trant, David	Field Technician									
Tzareff, Paul	Field Technician									
Vanmeter Jr, Nathan	Lead Operator									

2007 TY FL RATE CASES
SALARY ADJUSTMENT

w/p a

Wakefield, Roland	Lead Operator									
Watkins, Cedric	Field Technician									
White, Ronald	Field Supervisor									
Wierzbicki, Anthony	Project Manager									
Williams, Elisa	Operator									
Wilson, Michael	Regional Manager	4,257	-	4,257	149	4,406	132	176	354	29
Woodside, Michael	Operator (PT)									
Worrell, David	Operator	3,240	72	3,312	116	3,428	103	137	568	46
Wright, Jason	Operator	38,646	4,251	42,897	1,501	44,399	1,332	1,776	6,564	532
Wright, Thomas	Field Technician									
Abbott, Loretta	Office Clerk (1)	442	55	497	17	515	15	21	99	8
Bennett, Kimberly	Customer Service Representative (1)	446	69	514	18	532	16	21	99	8
Ceballos, Isabel	Customer Service Representative (1)	433	54	487	17	504	15	20	99	8
Chandler, Matthew	Accounts Receivable Clerk (1)	466	8	474	17	490	15	20	99	8
Christian, Elise	Customer Service Representative (1)	765	46	811	28	839	25	34	99	8
Dipasquale, Susan	Staff Assistant (1)	455	-	455	16	471	14	19	99	8
Hanks, Peggy	Office Clerk (1)	439	-	439	15	455	14	18	99	8
Mayeski, Lorie	Customer Service Representative (1)	510	59	568	20	588	18	24	99	8
Loeffel, Leanne	Customer Service Representative (1)	510	59	568	20	588	18	24	99	8
Noell, Sandra	Office Clerk (1)	452	-	452	16	468	14	19	99	8
Patricio, Rheginald	Accounts Receivable Clerk (1)	466	8	474	17	490	15	20	99	8
Paulk, Stella	Customer Service Representative (1)	526	65	591	21	612	18	24	99	8
Raponi, Ann	Office Clerk (1)	493	30	523	18	541	16	22	99	8
Sasic, Karen	Office Manager (1)	910	-	910	32	942	28	38	99	8
Sillitoe, Jacqueline	Customer Service Representative (1)	379	59	438	15	453	14	18	99	8
Trovinger, Ferrellyn	Accounts Payable Clerk (1)	486	78	564	20	584	18	23	99	8
Amoux, Diane	Payroll Support	280	7	287	10	297	9	12	36	3
Barrett, Jason	Regulatory Accountant									
Bell, William	Operations Director	448	-	448	16	463	14	19	36	3
Casados Jr, Jimmy	IT Manager	568	-	568	20	588	18	24	36	3
Chang, Tac	Accounts Payable Clerk (PT)	146	-	146	5	151	-	-	-	-
Chlebowicz, Agnes	Administrative Assistant	191	-	191	7	198	6	8	36	3
Crossett, Lisa	Chief Operations Officer	1,101	-	1,101	39	1,139	34	46	36	3
Dann, Brian	IT Specialist	276	-	276	10	285	9	11	36	3
Dave, Hardik	IT Specialist	224	12	236	8	244	7	10	36	3
Di Marca, Michelle	Senior Accountant	362	-	362	13	374	11	15	36	3
Dryjanski, Michael	Regulatory Accounting Manager									
Duggan, Michael	Accountant	270	-	270	9	280	8	11	36	3
Federico, Antoinette	Accounts Payable Manager	308	-	308	11	319	10	13	36	3
Friedman, Avelina	Account Manager	278	43	321	11	332	10	13	36	3
Georgiev, Lena	Regulatory Manager									
Gomez, Samuel	Data Entry Clerk	208	2	210	7	217	7	9	36	3
Granite, Deborah	Bill Clerk	267	27	294	10	304	9	12	36	3

2007 TY FL RATE CASES
SALARY ADJUSTMENT

w/p a

Guidice, Joyce	Benefits Specialist	291	5	296	10	306	9	12	36	3
Harrell, Janice	Accounts Payable Clerk	189	18	207	7	215	6	9	36	3
Harris, Khalifat	Operations Analyst	338	-	338	12	350	10	14	36	3
Haynes Jr, John	Director of Finance	676	-	676	24	700	21	28	36	3
Hopkins, John	Training and Development Manager	487	-	487	17	504	15	20	36	3
Hoy, John	Chief Regulatory Officer	1,036	-	1,036	36	1,072	32	43	36	3
Kazlo, Allen	Director of Accounting	676	-	676	24	700	21	28	36	3
Kim, Christine	Accounting Manager	494	-	494	17	512	15	20	36	3
Krugler, Adrienne	Customer Service Representative Manager	359	-	359	13	371	11	15	36	3
Krugman, Stacy	Executive Assistant	364	-	364	13	377	11	15	36	3
Lingeman, Samuel	Financial Analyst	301	-	301	11	311	9	12	36	3
Lubertozi, Steven	Chief Financial Officer	1,036	-	1,036	36	1,072	32	43	36	3
Luppino, Nancy	Account Manager	270	3	273	10	283	8	11	36	3
Luppino, Phyllis	Account Manager	231	36	267	9	276	8	11	36	3
Martinov, Slobodan	Accountant	270	-	270	9	280	8	11	36	3
Marzouk, Michelle	Administrative Clerk (PT)	168	-	168	6	174	-	-	-	-
Mathews, Mary	Billing Specialist	328	0	329	12	340	10	14	36	3
McGrain, Pamela	Data Specialist	277	14	291	10	301	9	12	36	3
McLean, Pamela	Payroll Support	294	-	294	10	305	9	12	36	3
Miranda, Margarita	Account Manager	223	16	238	8	246	7	10	36	3
Neyzelman, Dmitry	Senior Regulatory Accountant									
Ostler, Tom	IT Manager	595	-	595	21	616	18	25	36	3
Pannos, Nicholas	IT Specialist	222	5	226	8	234	7	9	36	3
Paule, Nancy	Receptionist	190	1	191	7	197	6	8	36	3
Pietras, Victoria	Senior Accountant	325	-	325	11	336	10	13	36	3
Povich, Ern	Regulatory Accountant	800	-	800	28	828	25	33	99	8
Rochow, Michelle	Regulatory Accountant	867	-	867	30	897	27	36	99	8
Rose, Kendra	Safety Coordinator	366	-	366	13	378	11	15	36	3
Scherer, William	Tax Accountant	408	-	408	14	423	13	17	36	3
Schiopu, Mircea	Mail Clerk	185	15	200	7	207	6	8	36	3
Schumacher, Lawrence	President	1,889	-	1,889	66	1,955	59	78	36	3
Serrill III, George	Project Manager	418	-	418	15	432	13	17	36	3
Shrake, Brian	Regulatory Accountant									
Simmons, Rodney	Office Specialist	337	-	337	12	349	10	14	36	3
Smutny Jr., Thomas	Systems Specialist	330	-	330	12	342	10	14	36	3
Sowell, George	Accounting Manager	392	-	392	14	406	12	16	36	3
Stone, Leslie	Executive Assistant	345	-	345	12	357	11	14	36	3
Stover, John	General Counsel	1,120	-	1,120	39	1,159	35	46	36	3
Sudduth, Donald	Business Director	869	-	869	30	900	27	36	36	3
Triggiani, Elizabeth	Human Resources Generalist	211	5	216	8	223	7	9	36	3
Valric, Lawanda	Administrative Clerk	162	-	162	6	168	5	7	36	3
Weeks, Kirsten	Regulatory Accounting Manager	1,230	-	1,230	43	1,273	38	51	99	8
Williams, John	Director of Governmental Affairs	552	-	552	19	571	17	23	36	3

2007 TY FL RATE CASES
SALARY ADJUSTMENT

w/p a

Yap Jr., Lowell Regulatory Accountant
Yount, Darrin Director of Strategic Planning
Zawadzki, Diane Operations Analyst

577	-	577	20	597	18	24	36	3
378	-	378	13	392	12	16	36	3
\$100,486	\$5,249	\$105,736	\$3,701	\$109,436	\$3,184	\$4,246	\$13,400	\$1,086

**2007 TY FL RATE CASES
CAPITALIZED TIME ADJUSTMENT**

w/p b

Labrador Utilities, Inc.

Total Per Book Salaries	\$97,954
Total Per Book Operator Salaries	66,770
Percentage of Operator to Total	68.16%
Per Book Operator Salaries	\$66,770
Per Book Operator Payroll Taxes	5,640
Per Book Operator Benefits	14,816
	<u>\$87,226</u>
Per Book Capitalized Time	(\$5,554)
Per Book Operator Payroll	87,226
Percentage of Total Payroll to Plant	<u>6.37%</u>
Pro Forma Operator Payroll	\$94,433
Percentage of Total Payroll to Plant	<u>6.37%</u>
Pro Forma Capitalized Time	<u><u>(\$6,012)</u></u>

ERC COUNT 12/07
 ALL UI OPERATING COMPANIES

w/p c-1

State	System		ERC Count (1)	Percentage to Total UI	
Illinois Companies					
	014 Camelot	W	216.0	0.07%	
	014 Camelot	S	215.0	0.07%	0.15%
	018 Charnar	W	53.0	0.02%	0.02%
	022 Cherry Hill	W	257.6	0.09%	0.09%
	025 Holiday Hills	W	242.0	0.08%	0.08%
	026 Clarendon	W	362.9	0.13%	0.13%
	027 Westlake	W	432.6	0.15%	
	027 Westlake	S	422.8	0.15%	0.30%
	034 County Line	W	117.4	0.04%	0.04%
	038 Del Mar	W	75.5	0.03%	0.03%
	042 Ferson Creek	W	382.0	0.13%	
	042 Ferson Creek	S	374.0	0.13%	0.26%
	046 Galena Territory	W	2,186.9	0.75%	
	046 Galena Territory	S	818.2	0.28%	1.04%
	048 Harbor Ridge	W	323.0	0.11%	
	048 Harbor Ridge	S	319.0	0.11%	0.22%
	049 Great Northern	W	361.0	0.12%	0.12%
	050 Killarney	W	352.0	0.12%	0.12%
	066 Northern Hills	W	172.0	0.06%	
	066 Northern Hills	S	185.0	0.06%	0.12%
	070 Lake Marian	W	293.0	0.10%	0.10%
	078 Wildwood Water Serv Co	W	195.0	0.07%	0.07%
	082 Valentine	W	70.0	0.02%	0.02%
	086 Walk-up Woods	W	220.0	0.08%	0.08%
	090&062 Whisp.Hills/Pist./Sun	W	2,352.5	0.81%	0.81%
	096 Medina	S	475.2	0.16%	0.16%
	098 Cedar Bluff	S	131.0	0.05%	0.05%
	011 Apple Canyon Usage	W	895.0	0.31%	
	010 Apple Canyon Avail	A	1,784.0	0.62%	0.92%
	055 Lake Holiday Usage	W	1,869.0	0.64%	
	054 Lake Holiday Avail	W	226.0	0.08%	0.72%
	059 Lake Wildwood Usage	W	472.5	0.16%	
	058 Lake Wildwood Avail	W	951.0	0.33%	0.49%
	Total Illinois		17,802.1	6.14%	6.14%
Indiana Companies					
	280+282 Twin Lakes	W	3,127.1	1.08%	
	280+282 Twin Lakes	S	3,068.6	1.06%	2.14%

ERC COUNT 12/07
 ALL UI OPERATING COMPANIES

w/p c-1

151	Indiana Water Service	W	1,858.0	0.64%	0.64%
150/149	WSC of Indiana	W	200.9	0.07%	
150/149	WSC of Indiana	S	205.9	0.07%	0.14%
	Total Indiana		8,460.5	2.92%	2.92%
Ohio Companies					
246	Holiday Service - Usage	W	439.0	0.15%	
245	Holiday Service - Availability		538.0	0.19%	0.34%
	Total Ohio		977.0	0.34%	0.34%
Kentucky Companies					
	WSCK				
162	Clinton	W	783.4	0.27%	
170	Middlesborough	W	6,601.7	2.28%	2.55%
	Total Kentucky		7,385.1	2.55%	2.55%
Florida Companies					
640	Miles Grant	W	1,122.1	0.39%	
640	Miles Grant	S	1,055.6	0.36%	0.75%
646	Tierre Verde	S	2,416.9	0.83%	0.83%
645	Mid-County	S	3,354.6	1.16%	1.16%
641	Lake Placid	W	138.9	0.05%	
641	Lake Placid	S	136.9	0.05%	0.10%
643	Eastlake	W	910.8	0.31%	
643	Eastlake	S	872.8	0.30%	0.62%
644	Pebble Creek	W	1,476.5	0.51%	
644	Pebble Creek	S	1,423.5	0.49%	1.00%
647	Alafaya	S	7,268.9	2.51%	2.51%
648	Longwood	S	1,779.0	0.61%	0.61%
649	Wedgefield	W	1,549.8	0.53%	
649	Wedgefield	S	1,526.8	0.53%	1.06%
672	Cypress Lakes	W	1,216.5	0.42%	
672	Cypress Lakes	S	1,123.3	0.39%	0.81%
673	Eagle Ridge	S	1,618.1	0.56%	
674	Cross Creek	S	908.0	0.31%	0.87%
680	Sanlando	W	11,857.7	4.09%	
680	Sanlando	S	9,139.5	3.15%	7.24%
690	Sandalhaven	S	1,043.2	0.36%	0.36%
694	Bayside	W	240.4	0.08%	
694	Bayside	S	241.2	0.08%	0.17%
695	South Gate	W	5,726.3	1.98%	1.98%
699	Sandy Creek	W	198.8	0.07%	
699	Sandy Creek	S	167.0	0.06%	0.13%
693	Labrador	W	792.3	0.27%	
693	Labrador	S	775.3	0.27%	0.54%

ERC COUNT 12/07
ALL UI OPERATING COMPANIES

w/p e-1

691	Pennbrooke	W	1,459.5	0.50%	
691	Pennbrooke	S	1,243.0	0.43%	0.93%
692	Hutchinson Island/Irrigation	W	205.7	0.07%	
692	Hutchinson Island	S	176.2	0.06%	0.13%
3101	ACME Water Supply	W	160.5	0.06%	0.06%
	Lake Utility Services, Inc.				
628	Clermont	W	205.0	0.07%	
631	Amberhill	W	754.0	0.26%	
632	Highland Point	W	48.5	0.02%	
633	The Oranges	W	99.0	0.03%	
634	Lake Ridge	W	131.0	0.05%	
636	Vistas	W	978.6	0.34%	
661	Crescent Bay	W	93.0	0.03%	
662	Crescent West	W	100.0	0.03%	
663	Four Lakes	W	65.0	0.02%	
664	Lake Saunders Acres	W	45.0	0.02%	
665	Lake Crescent Hills	W	127.0	0.04%	
666	Preston Cove	W	105.0	0.04%	
667&668	South Clermont (EDB)	W	2,806.1	0.97%	
675	Lake Groves	W	2,804.3	0.97%	
675	Lake Groves	S	2,744.8	0.95%	3.83%
	Utilities, Inc. of Florida				
602	Weathersfield	W	691.0	0.24%	
602	Weathersfield	S	685.5	0.24%	
604	Oakland Shores	W	228.5	0.08%	
606	Little Wekiva	W	61.0	0.02%	
608	Park Ridge	W	98.0	0.03%	
610	Phillips Section	W	80.0	0.03%	
612	Crystal Lake	W	172.0	0.06%	
613	Bartelt Wis Bar	W	163.5	0.06%	
613	Bartelt Wis Bar	S	162.0	0.06%	
614	Ravenna Park/Lincoln Hts.	W	349.5	0.12%	
614	Ravenna Park/Lincoln Hts.	S	249.5	0.09%	
615	Bartelt Buena Vista	W	1,074.8	0.37%	
616	Bear Lake Manor	W	223.5	0.08%	
618	Jansen	W	252.5	0.09%	
620	Crescent Hts	W	277.5	0.10%	
621	Davis Shores	W	43.0	0.01%	
622	Golden Hills-BFF(bulk)	S	8.0	0.00%	
623	Trailwoods	W	299.0	0.10%	
623	Trailwoods	S	293.0	0.10%	
624	Oakland Hills	W	181.0	0.06%	
624	Oakland Hills	S	180.0	0.06%	
626	Summertree	S	1,031.0	0.36%	
626	Summertree	W	1,219.0	0.42%	
629	Orangewood	W	560.3	0.19%	
630	Golden Hills	W	448.6	0.15%	
635	Crownwood	W	81.8	0.03%	
635	Crownwood	S	58.8	0.02%	
637	Lake Tarpon	W	430.9	0.15%	3.31%
	Total Florida		84,035.1	28.99%	28.99%

Louisiana Companies

	Utilities, Inc. of Louisiana				
771	North Park/River Oaks	W	1,185.0	0.41%	
771	North Park/River Oaks	S	1,129.5	0.39%	
773&776	Arrowwood	W	2,869.9	0.99%	
773&776	Arrowwood	S	2,545.9	0.88%	
774	Greenbrier	W	849.3	0.29%	
774	Greenbrier	S	726.3	0.25%	
775	Ingram Estates	W	254.0	0.09%	

ERC COUNT 12/07
ALL UI OPERATING COMPANIES

w/p c-1

775	Ingram Estates	S	253.0	0.09%	3.39%
Louisiana Water Service, Inc.					
751	Woodridge	W	511.5	0.18%	
751	Woodridge	S	495.5	0.17%	
752	Kingspoint	W	2,005.3	0.69%	
752	Kingspoint	S	1,993.3	0.69%	
753	Lake Village	W	674.5	0.23%	
753	Lake Village	S	667.0	0.23%	
754	Huntwyck	W	669.5	0.23%	
754	Huntwyck	S	669.5	0.23%	
755	Quail Ridge	W	379.0	0.13%	
755	Quail Ridge	S	358.0	0.12%	
756	Magnolia Forest/Rocket Ranch	W	544.8	0.19%	
756	Magnolia Forest/Rocket Ranch	S	526.0	0.18%	
757	Frenchman's Estates	W	53.5	0.02%	
758	Village Acadian	W	49.4	0.02%	
758	Village Acadian	S	43.4	0.01%	
759	Oakmont	W	164.0	0.06%	
759	Oakmont	S	160.0	0.06%	
764	Pirates Harbor	W	104.0	0.04%	3.47%
Total Louisiana			19,881.1	6.86%	6.86%

Maryland Companies

Greenridge Utilities, Inc.					
205	Greenridge	W	847.0	0.29%	
208	Vista	W	81.0	0.03%	0.32%
210	Provinces	W	1,505.0	0.52%	0.52%
Maryland Water Service, Inc.					
215	Pinto	W	1,079.6	0.37%	
215	Pinto	S	1,072.4	0.37%	
216	Highland Estates	W	37.0	0.01%	0.76%
Total Maryland			4,622.0	1.59%	1.59%

Virginia Companies

212	Colchester	S	169.0	0.06%	0.06%
224+225	Massanutten usage	W	2,424.3	0.84%	
224+225	Massanutten usage	S	2,212.6	0.76%	
226	Massanutten availability W		216.0	0.07%	
226	Massanutten availability S		216.0	0.07%	1.75%
Total Virginia			5,237.9	1.81%	1.81%

Pennsylvania Companies

250	Utilities, Inc. of Pennsylvania	S	2,161.0	0.75%	0.75%
251	Westgate	W	741.5	0.26%	0.26%
255	Penn Estates Usage	W	1,664.0	0.57%	
255	Penn Estates Usage	S	1,664.0	0.57%	
256	Penn Estates Availability W	W	66.0	0.02%	
256	Penn Estates Availability S	S	66.0	0.02%	1.19%
Total Pennsylvania			6,362.5	2.20%	2.20%

New Jersey Companies

270	Montague Water	W	791.0	0.27%	
271	Montague Sewer	S	267.5	0.09%	0.37%
Total New Jersey			1,058.5	0.37%	0.37%

ERC COUNT 12/07
 ALL UI OPERATING COMPANIES

w/p c-1

Arizona Companies

935	Bermuda	W	8,529.4	2.94%	2.94%
Total Arizona			8,529.4	2.94%	2.94%

Nevada Companies

110&112	Spring Creek	W	4,063.3	1.40%	
110&112	Spring Creek	S	123.8	0.04%	1.44%
140	Central NV	W	6,813.5	2.35%	
140	Central NV	S	3,877.0	1.34%	3.69%
120	Utilities Inc of Nevada	W	3,188.5	1.10%	1.10%
123	Sky Ranch	W	579.0	0.20%	0.20%
Total Nevada			18,645.1	6.43%	6.43%

South Carolina Companies

Carolina Water Service, Inc.					
295	Salem Church	W	164.0	0.06%	
351	Falcon Ranches	W	97.8	0.03%	
352	Sycamore Acres	W	78.0	0.03%	
353	Westside Terrace	W	66.0	0.02%	
356	Oakwood	W	59.0	0.02%	
356	Oakwood	S	9.0	0.00%	
357	Woodsen	S	85.0	0.03%	
360	Blue Ridge	W	55.0	0.02%	
361	Calvin Acres	W	40.0	0.01%	
362	Pocalla	W	98.0	0.03%	
362	Pocalla	S	159.0	0.05%	
363	Rock Bluff	W	20.0	0.01%	
364	Laurel Meadows	W	285.0	0.10%	
364	Laurel Meadows	S	278.0	0.10%	
366	Oakland Plantation	S	305.6	0.11%	
368	Indian Forks	W	75.0	0.03%	
368	Indian Forks	S	83.0	0.03%	
369	Brighton Forest	W	135.0	0.05%	
369	Brighton Forest	S	144.0	0.05%	
370	Indian Pines	W	17.0	0.01%	
371	Rollingwood/Silver Creek	W	185.0	0.06%	
371	Rollingwood/Silver Creek	S	101.0	0.03%	
372	Hidden Valley Trailer Pk.	W	55.2	0.02%	
372	Hidden Valley Trailer Pk.	S	486.6	0.17%	
373	Smallwood Estates	W	116.0	0.04%	
373	Smallwood Estates	S	114.0	0.04%	
375	The Landings	W	162.0	0.06%	
375	The Landings	S	163.0	0.06%	
376	Harborside	W	78.8	0.03%	
376	Harborside	S	77.8	0.03%	
378	Spring Lake	W	121.0	0.04%	
378	Spring Lake	S	121.0	0.04%	
379	Palmetto Apts./Ests	S	46.2	0.02%	
380	Roosevelt Gardens	S	165.5	0.06%	
382	Hidden Valley Country Club	W	188.8	0.07%	
385	Peachtree Acres	W	48.0	0.02%	
391	Hunters Glen	W	94.5	0.03%	
401	Heatherwood	W	101.0	0.03%	
402	Idlewood	W	67.5	0.02%	
403	Springhill/Oakcrest	W	419.5	0.14%	
403	Springhill/Oakcrest	S	427.0	0.15%	
404	Lincolnshire-Whites Creek	S	248.0	0.09%	
405	40 Love Point	W	122.0	0.04%	
405	40 Love Point	S	121.0	0.04%	

ERC COUNT 12/07
 ALL UI OPERATING COMPANIES

w/p c-1

406	Planter's Station	W	166.0	0.06%	
406	Planter's Station	S	164.0	0.06%	
422	Greyland Forest	W	310.0	0.11%	
422	Greyland Forest	S	306.0	0.11%	
424	Glen Village	W	211.0	0.07%	
424	Glen Village	S	206.0	0.07%	
440	North Lake Shore Pt.	S	24.0	0.01%	
441	Ballentine Cove	S	89.0	0.03%	
442	Shadowood Cove	S	115.0	0.04%	
443	Golden Pond	W	353.0	0.12%	
443	Golden Pond	S	344.0	0.12%	
444	Oak Grove Est	W	155.8	0.05%	
444	Oak Grove Est	S	158.8	0.05%	
445	Secret Cove	S	87.0	0.03%	
458	Governor's Grant	S	316.0	0.11%	
460	Riverhills Plantation	W	3,219.1	1.11%	
460	Riverhills Plantation	S	2,918.6	1.01%	
461	Lake Murray		322.5	0.11%	
461	Lake Murray	S	331.0	0.11%	
462	Stonegate	W	134.0	0.05%	
462	Stonegate	S	133.0	0.05%	
374+394	Friarsgate	S	2,826.6	0.98%	6.55%
Utilities Services of South Carolina, Inc.					
1310	Parkwood	W	116.5	0.04%	
1311	Tanya Terrance	W	22.0	0.01%	
1312	Emma Terrance	W	23.0	0.01%	
1313	Lexington Estates	W	165.0	0.06%	
1314	Windy Hill	W	138.0	0.05%	
1315	Hermitage	W	14.0	0.00%	
1316	Vanarsdale	W	187.6	0.06%	
1317	Murray Park	W	46.0	0.02%	
1318	Lake Village	W	75.0	0.03%	
1319	Tanglewood	W	8.0	0.00%	
1320	Foxtrail	W	36.0	0.01%	
1321	Dutch Village (Aka Dutch Creek)	W	177.0	0.06%	
1322	Raintree Acres	W	142.0	0.05%	
1323	Murray Lodge	W	56.0	0.02%	
1324	Dutchman Shores	W	150.0	0.05%	
1325	Indian Cove	W	33.0	0.01%	
1326	Milmont Shores	W	20.0	0.01%	
1327	Arrowhead Estates	W	32.0	0.01%	
1328	Lakewood Estates	W	77.0	0.03%	
1329	Hilton Place	W	34.0	0.01%	
1330	Estates Of Hilton	W	27.0	0.01%	
1331	Plantation	W	390.0	0.13%	
1332	Springfield Acres	W	49.0	0.02%	
1333	Farrowood	W	145.0	0.05%	
1334	Harmon Estates	W	45.0	0.02%	
1335	Washington Height	W	70.0	0.02%	
1336	Oakridge Hunt Club	W	79.0	0.03%	
1337	Glenn Village	W	86.0	0.03%	
1338	Belmead	W	148.0	0.05%	
1339	Sangaree	W	57.0	0.02%	
1340	Cambridge Hills	W	87.8	0.03%	
1341	South Congaree	W	-	0.00%	
1342	Dutchman Acres	W	22.0	0.01%	
1343	Lexington Farms	W	113.6	0.04%	
1344	Charwood	W	272.0	0.09%	
1345	Charleswood	W	183.0	0.06%	
1346	Shandon	W	71.0	0.02%	
1346	Shandon	S	38.0	0.01%	
1347	Foxwood	W	232.0	0.08%	
1347	Foxwood	S	233.0	0.08%	
1348	Pleasant Hil	W	-	0.00%	
1349	Leslie Woods	W	15.0	0.01%	

ERC COUNT 12/07
 ALL UT OPERATING COMPANIES

w/p e-1

1350	Leslie Dale	W	28.0	0.01%	
1351	Middlestream	W	34.0	0.01%	
1352	Riverben	W	35.0	0.01%	
1353	Carrolton Place	W	40.0	0.01%	
1354	Carrowoods	W	80.0	0.03%	
1354	Carrowoods	S	55.0	0.02%	
1355	Country Oaks	W	133.0	0.05%	
1355	Country Oaks	S	43.0	0.01%	
1356	Barney Rhett	W	43.0	0.01%	
1357	Wesleywoods	W	24.0	0.01%	
1358	Valleymere	W	22.0	0.01%	
1359	Hickory Mills	W	37.0	0.01%	
1360	Plantation	W	90.0	0.03%	
1361	Woodbridge	W	66.0	0.02%	
1362	Wintercrest	W	72.0	0.02%	
1363	Olewoods	W	27.0	0.01%	
1364	Ridgewood	W	64.0	0.02%	
1365	Olympic Acres	W	74.0	0.03%	
1366	Shiloh Quarters	W	57.0	0.02%	
1367	Southbend	W	38.0	0.01%	
1368	Windy Run	W	31.8	0.01%	
1369	Brownsboro	W	82.0	0.03%	
1370	Cameron Estates	W	28.0	0.01%	
1371	Old Farms	W	20.0	0.01%	
1372	Silver Lakes	W	27.0	0.01%	
1373	Woodwind	W	45.0	0.02%	
1374	Farm Pond	W	26.0	0.01%	
1375	Kim Acres	W	55.0	0.02%	
1376	Brown Neal	W	17.0	0.01%	
1377	Pepperidge	W	47.0	0.02%	
1378	Polly Circle	W	38.0	0.01%	
1379	Mallard Lakes	W	46.0	0.02%	
1380	Hidden Lakes	W	47.0	0.02%	
1381	Spirng Lakes	W	14.0	0.00%	
1383	Calhoun Acres	W	76.0	0.03%	
1384	Nevitt Forest	W	209.0	0.07%	
1385	Naynie Builders	W	92.0	0.03%	
1386	Leon Bolt	W	100.0	0.03%	
1387	Normandy Park	W	37.0	0.01%	
1388	Dobbins Estates	W	71.0	0.02%	
1389	Hill And Dale	W	62.0	0.02%	
1390	Lakewood	W	73.0	0.03%	
1391	Edgebrook	W	18.0	0.01%	
1392	Oakwood Estates	W	52.0	0.02%	
1393	Sherwood Forest	W	33.0	0.01%	
1394	Towncreek Acres	W	107.0	0.04%	
1395	Bellmead	W	68.0	0.02%	
1396	Bridgewater	W	97.0	0.03%	
1397	Clearview	W	60.0	0.02%	
1398	Fieldcrest	W	28.0	0.01%	
1399	Greenforest	W	67.0	0.02%	
1400	Hidden Lake	W	66.0	0.02%	
1401	Surfside	W	22.0	0.01%	
1402	Purdy Shores Summer Homes	W	91.0	0.03%	2.39%
464	Creekwood	W	54.0	0.02%	
465	Cedarwood	W	120.0	0.04%	0.06%
485	Tega Cay	W	1,794.5	0.62%	
485	Tega Cay	S	1,691.0	0.58%	1.20%
United Utility Companies, Inc.					
705	Kingswood	W	25.0	0.01%	
712	Woodmont Estates	W	21.0	0.01%	
714	Trollingwood	W	49.0	0.02%	
714	Trollingwood	S	51.0	0.02%	

ERC COUNT 12/07
 ALL UI OPERATING COMPANIES

w/p c-1

715	Briarcreek	S	80.8	0.03%	
716	Canterbury	S	142.0	0.05%	
717	Chambert Forest	S	95.2	0.03%	
718	Fairwood	S	88.0	0.03%	
720	River Forest	S	75.0	0.03%	
721	Stonecreek	S	181.2	0.06%	
722	Valley Brook	S	163.8	0.06%	
723	Village	S	211.0	0.07%	
724	N. Greenville Col/Valleyview	S	43.0	0.01%	
725	Highland Forest	S	86.6	0.03%	
726	Keowee Townhomes	S	-	0.00%	0.45%
Total South Carolina			30,876.6	10.65%	10.65%

Georgia Companies

Utilities, Inc. of Georgia					
264+265	Skidaway Island - Usage	W	4,426.9	1.53%	
264+265	Skidaway Island - Usage	S	4,270.9	1.47%	
262	Skidaway Island - Availability	W	430.0	0.15%	
262	Skidaway Island - Availability	S	430.0	0.15%	
266+267	Olde Atlanta	S	640.0	0.22%	3.52%
WSC of Georgia					
1268	Crestwood	W	15.0	0.01%	
1269	Bear Creek	W	136.0	0.05%	
1270	Kendalwood	W	48.0	0.02%	
1271	Riverwood	W	152.0	0.05%	
1272	Shady Grove	W	60.0	0.02%	
1273	Southlake	W	31.0	0.01%	
1274	Spenceton #1	W	20.0	0.01%	
1275	Spenceton #2	W	102.0	0.04%	
1276	Spenceton #3	W	7.0	0.00%	
1277	Talloakas	W	166.0	0.06%	
1278	Vinland	W	21.0	0.01%	
1279	Holly Springs	W	56.0	0.02%	
1280	Lake Riverside	W	253.0	0.09%	
1281	Riverwood Estates	W	31.0	0.01%	
1282	Worthy Manor	W	173.0	0.06%	
1282	Worthy Manor	S	171.0	0.06%	
1283	Big Oak Estates	W	40.0	0.01%	
1284	Holland Folly 1	W	24.0	0.01%	
1285	Windsor	W	34.0	0.01%	
1286	Holland Folly 2	W	20.0	0.01%	
1287	Holland Folly 3	W	108.0	0.04%	
1287	Holland Folly 3	S	108.0	0.04%	
1288	Colonial Acres	W	17.0	0.01%	
1289	Carver	W	38.0	0.01%	
1290	Lee Villa Estates	W	6.0	0.00%	
1291	Park Place	W	11.0	0.00%	
1292	Fairfax Motel	W	-	0.00%	
1293	Shady Acres	W	81.0	0.03%	
1294	Shady Acres II	W	40.0	0.01%	
1295	Green Meadow Estates	W	51.0	0.02%	
1296	Jamar	W	21.0	0.01%	
1297	Country West Sect 3	W	20.0	0.01%	
1298	Country Circle Road	W	20.0	0.01%	
1299	South Lake II	W	19.0	0.01%	0.72%
Total Georgia			12,297.8	4.24%	4.24%

Tennessee Companies

651	Tennessee	W	555.0	0.19%	0.19%
Total Tennessee			555.0	0.19%	0.19%

North Carolina Companies

CWS of North Carolina, Inc.				
501	Sugar Mountain	W	1,421.3	0.49%
501	Sugar Mountain	S	1,204.4	0.42%
502	Saddlewood	W	123.0	0.04%
502	Saddlewood	S	15.0	0.01%
505	Sherwood Forest	W	244.2	0.08%
506	Woodhaven	W	78.0	0.03%
508	Zemoso Acres	W	243.0	0.08%
509	Ashley Hills	S	1,050.0	0.36%
510	Corolla Light	W	493.0	0.17%
510	Corolla Light	S	474.7	0.16%
512	Kynwood Subdiv.	S	67.0	0.02%
513	Hestron Park	W	61.5	0.02%
513	Hestron Park	S	67.5	0.02%
514	Hound Ears	W	447.0	0.15%
514	Hound Ears	S	199.5	0.07%
515	Willowbrook	W	159.9	0.06%
515	Willowbrook	S	156.6	0.05%
516	Grandview at T-Square	W	76.0	0.03%
517	Spooners Creek	S	44.0	0.02%
519	Wolf Laurel	W	679.0	0.23%
519	Wolf Laurel	S	66.0	0.02%
523	Vander	W	225.0	0.08%
524	White Oak	W	322.0	0.11%
524	White Oak	S	230.0	0.08%
525	Kings Grant (Ral.)	S	114.0	0.04%
527	Bent Creek	W	302.0	0.10%
527	Bent Creek	S	302.0	0.10%
528	Mt. Carmel	S	373.0	0.13%
529	Whispering Pines	W	1,445.8	0.50%
530	Crestview Estates	W	33.0	0.01%
531	Sherwood Park	W	100.0	0.03%
532	Misty Mountain	W	138.0	0.05%
533	Crystal Mountain	W	45.0	0.02%
535	Ski Mountain	W	237.0	0.08%
536	Mt. Mitchell	W	253.0	0.09%
537	Bear Paw	W	310.5	0.11%
537	Bear Paw	S	69.0	0.02%
539	Forest Brook	W	131.5	0.05%
540	Carolina Forest availability	W	808.0	0.28%
541	Carolina Forest usage	W	188.3	0.06%
542	Woodrun availability	W	806.0	0.28%
543	Woodrun usage	W	419.5	0.14%
544	Kings Grant	W	173.0	0.06%
544	Kings Grant	S	172.0	0.06%
545	Watauga Vista	W	141.0	0.05%
546	Steeplechase	S	152.0	0.05%
547	Quail Ridge	W	162.0	0.06%
552	Beechbrook	W	33.0	0.01%
553	Cabarrus Woods	W	1,498.0	0.52%
553	Cabarrus Woods	S	1,471.0	0.51%
554	College Park	W	73.0	0.03%
554	College Park	S	42.8	0.01%
555	Country Club Annex	W	28.0	0.01%
556	Country Hills	W	67.0	0.02%
558	Harbor House Estates	W	60.0	0.02%
559	Holly Acres	W	58.4	0.02%
562	Oakdale Terrace	W	47.0	0.02%
565	Suburban Heights	W	26.0	0.01%
566	Windsor Chase	W	136.5	0.05%
569	Yorktown	W	106.0	0.04%
572	Powder Horn Mtn.	W	217.5	0.08%
573	Monteray Shores	W	456.0	0.16%
573	Monteray Shores	S	443.5	0.15%
574	Olde Point	W	194.0	0.07%
574	Olde Point	S	114.0	0.04%

575	Independent	S	702.0	0.24%	
576	High Meadows usage	W	12.5	0.00%	
577	High Meadows flat	W	253.0	0.09%	
579	Chapel Hills	W	93.0	0.03%	
582	Huntington Forest	W	58.0	0.02%	
583	Eastwood Forest	W	124.8	0.04%	
584	Westwood Forest	W	117.0	0.04%	
585	Wildwood Green	W	229.0	0.08%	
586	Bahia Bay	W	117.0	0.04%	
587	Lamplighter East	W	184.0	0.06%	
587	Lamplighter East	S	184.0	0.06%	
588	Lamplighter South	W	1,270.5	0.44%	
588	Lamplighter South	S	1,273.0	0.44%	
592	Emerald Point	W	163.9	0.06%	
592	Emerald Point	S	160.4	0.06%	
593	Huntwick	S	113.0	0.04%	
594	Abington/Interlaken	W	586.0	0.20%	
594	Abington/Interlaken	S	588.0	0.20%	
595	Brandywine Bay	W	835.1	0.29%	
595	Brandywine Bay	S	731.6	0.25%	
596	Queens Harbor	W	136.8	0.05%	
596	Queens Harbor	S	131.8	0.05%	
597	Belvedere	W	965.1	0.33%	
597	Belvedere	S	609.6	0.21%	
598	Riverpointe	W	190.0	0.07%	
598	Riverpointe	S	186.0	0.06%	
851	Riverwoods	W	183.0	0.06%	
853	For Rdge/Brandywn,So. woods	S	539.0	0.19%	
854	Pinnacle Shores	W	153.0	0.05%	
855	Britley	W	61.0	0.02%	
855	Britley	S	60.0	0.02%	
856	Waterglyn	W	33.0	0.01%	
857	Buffalo Creek	W	226.0	0.08%	
858	Stone Hollow	W	225.5	0.08%	
859	The Harbour	W	336.5	0.12%	
860	The Pointe	W	1,045.5	0.36%	
861	Avensong	W	305.5	0.11%	
861	Avensong	S	301.0	0.10%	
862	Wood Trace	W	44.0	0.02%	
864	Middlepoint	W	69.5	0.02%	
865	Lemmond Acres	W	34.0	0.01%	
866	Wildlife Bay	W	76.0	0.03%	
867	Nags Head	S	726.0	0.25%	
868	Cambridge Commons/Brawley Farms	W	691.0	0.24%	
868	Cambridge Commons/Brawley Farms	S	678.5	0.23%	
869	Currituck Club	W	463.5	0.16%	
870	Meadow Glen	W	31.0	0.01%	
871	Heathfield	W	66.5	0.02%	
872	Monterray	W	25.0	0.01%	
873	High Vista	W	230.0	0.08%	
874	Eagle Crossing	W	77.0	0.03%	
876	Larkhaven	W	156.0	0.05%	
881	Regalwood	S	375.0	0.13%	
882	White Oak Estates	S	487.0	0.17%	13.04%
	CWS Systems, Inc.				
801	Fairfield - Mountain	W	1,128.5	0.39%	
801	Fairfield - Mountain	S	514.5	0.18%	
802	Fairfield - Sapphire Valley	W	1,569.8	0.54%	

ERC COUNT 12/07
 FLORIDA AND SOUTH OPERATING COMPANIES

w/p c-2

<u>State</u>	<u>System</u>		<u>ERC Count (1)</u>	<u>Percentage to Total</u>	
Florida Companies					
640	Miles Grant	W	1,122.1	1.08%	
640	Miles Grant	S	1,055.6	1.02%	2.10%
646	Tierre Verde	S	2,416.9	2.33%	2.33%
645	Mid-County	S	3,354.6	3.23%	3.23%
641	Lake Placid	W	138.9	0.13%	
641	Lake Placid	S	136.9	0.13%	0.27%
643	Eastlake	W	910.8	0.88%	
643	Eastlake	S	872.8	0.84%	1.72%
644	Pebble Creek	W	1,476.5	1.42%	
644	Pebble Creek	S	1,423.5	1.37%	
644				0.00%	2.79%
647	Alafaya	S	7,268.9	6.99%	6.99%
648	Longwood	S	1,779.0	1.71%	1.71%
649	Wedgfield	W	1,549.8	1.49%	
649	Wedgfield	S	1,526.8	1.47%	2.96%
672	Cypress Lakes	W	1,216.5	1.17%	
672	Cypress Lakes	S	1,123.3	1.08%	2.25%
673	Eagle Ridge	S	1,618.1	1.56%	
674	Cross Creek	S	908.0	0.87%	2.43%
680	Sanlando	W	11,857.7	11.41%	
680	Sanlando	S	9,139.5	8.80%	20.21%
690	Sandalhaven	S	1,043.2	1.00%	1.00%
690					
694	Bayside	W	240.4	0.23%	
694	Bayside	S	241.2	0.23%	0.46%
695	South Gate	W	5,726.3	5.51%	5.51%
699	Sandy Creek	W	198.8	0.19%	
699	Sandy Creek	S	167.0	0.16%	0.35%
693	Labrador	W	792.3	0.76%	
693	Labrador	S	775.3	0.75%	1.51%
691	Pennbrooke	W	1,459.5	1.40%	
691	Pennbrooke	S	1,243.0	1.20%	2.60%
692	Hutchinson Island/Irrigation	W	205.7	0.20%	
692	Hutchinson Island	S	176.2	0.17%	0.37%
3101	ACME Water Supply	W	160.5	0.15%	0.15%
Lake Utility Services, Inc.					
628	Clermont	W	205.0	0.20%	
631	Amberhill	W	754.0	0.73%	
632	Highland Point	W	48.5	0.05%	
633	The Oranges	W	99.0	0.10%	
634	Lake Ridge	W	131.0	0.13%	
636	Vistas	W	978.6	0.94%	
661	Crescent Bay	W	93.0	0.09%	
662	Crescent West	W	100.0	0.10%	

ERC COUNT 12/07
 FLORIDA AND SOUTH OPERATING COMPANIES

w/p c-2

663	Four Lakes	W	65.0	0.06%	
664	Lake Saunders Acres	W	45.0	0.04%	
665	Lake Crescent Hills	W	127.0	0.12%	
666	Preston Cove	W	105.0	0.10%	
667&668	South Clermont (EDB)	W	2,806.1	2.70%	
675	Lake Groves	W	2,804.3	2.70%	
675	Lake Groves	S	2,744.8	2.64%	10.69%
	Utilities, Inc. of Florida				
602	Weathersfield	W	691.0	0.66%	
602	Weathersfield	S	685.5	0.66%	
604	Oakland Shores	W	228.5	0.22%	
606	Little Wekiva	W	61.0	0.06%	
608	Park Ridge	W	98.0	0.09%	
610	Phillips Section	W	80.0	0.08%	
612	Crystal Lake	W	172.0	0.17%	
613	Bartelt Wis Bar	W	163.5	0.16%	
613	Bartelt Wis Bar	S	162.0	0.16%	
614	Ravenna Park/Lincoln Hts.	W	349.5	0.34%	
614	Ravenna Park/Lincoln Hts.	S	249.5	0.24%	
615	Bartelt Buena Vista	W	1,074.8	1.03%	
616	Bear Lake Manor	W	223.5	0.22%	
618	Jansen	W	252.5	0.24%	
620	Crescent Hts	W	277.5	0.27%	
621	Davis Shores	W	43.0	0.04%	
622	Golden Hills-BFF(bulk)	S	8.0	0.01%	
623	Trailwoods	W	299.0	0.29%	
623	Trailwoods	S	293.0	0.28%	
624	Oakland Hills	W	181.0	0.17%	
624	Oakland Hills	S	180.0	0.17%	
626	Summertree	S	1,031.0	0.99%	
626	Summertree	W	1,219.0	1.17%	
629	Orangewood	W	560.3	0.54%	
630	Golden Hills	W	448.6	0.43%	
635	Crownwood	W	81.8	0.08%	
635	Crownwood	S	58.8	0.06%	
637	Lake Tarpon	W	430.9	0.41%	9.24%
	Total Florida		84,035.1	80.87%	80.87%

Louisiana Companies

	Utilities, Inc. of Louisiana				
771	North Park/River Oaks	W	1,185.0	1.14%	
771	North Park/River Oaks	S	1,129.5	1.09%	
773&776	Arrowwood	W	2,869.9	2.76%	
773&776	Arrowwood	S	2,545.9	2.45%	
774	Greenbrier	W	849.3	0.82%	
774	Greenbrier	S	726.3	0.70%	
775	Ingram Estates	W	254.0	0.24%	
775	Ingram Estates	S	253.0	0.24%	9.44%
	Louisiana Water Service, Inc.				
751	Woodridge	W	511.5	0.49%	
751	Woodridge	S	495.5	0.48%	
752	Kingspoint	W	2,005.3	1.93%	
752	Kingspoint	S	1,993.3	1.92%	
753	Lake Village	W	674.5	0.65%	
753	Lake Village	S	667.0	0.64%	
754	Huntwyck	W	669.5	0.64%	
754	Huntwyck	S	669.5	0.64%	
755	Quail Ridge	W	379.0	0.36%	
755	Quail Ridge	S	358.0	0.34%	
756	Magnolia Forest/Rocket Ranch	W	544.8	0.52%	
756	Magnolia Forest/Rocket Ranch	S	526.0	0.51%	
757	Frenchman's Estates	W	53.5	0.05%	
758	Village Acadian	W	49.4	0.05%	

ERC COUNT 12/07
 FLORIDA AND SOUTH OPERATING COMPANIES

w/p c-2

758	Village Acadian	S	43.4	0.04%	
759	Oakmont	W	164.0	0.16%	
759	Oakmont	S	160.0	0.15%	
764	Pirates Harbor	W	104.0	0.10%	9.69%
Total Louisiana			19,881.1	19.13%	19.13%
Total Florida and South			103,916.2	100.00%	100.00%

ERC COUNT 12/07
 FLORIDA OPERATING COMPANIES

w/p c-3

<u>System</u>		<u>ERC Count (1)</u>	<u>Percentage to Total</u>	
640 Miles Grant	W	1,122.1	1.34%	
640 Miles Grant	S	1,055.6	1.26%	2.59%
646 Tierre Verde	S	2,416.9	2.88%	2.88%
645 Mid-County	S	3,354.6	3.99%	3.99%
641 Lake Placid	W	138.9	0.17%	
641 Lake Placid	S	136.9	0.16%	0.33%
643 Eastlake	W	910.8	1.08%	
643 Eastlake	S	872.8	1.04%	2.12%
644 Pebble Creek	W	1,476.5	1.76%	
644 Pebble Creek	S	1,423.5	1.69%	3.45%
647 Alafaya	S	7,268.9	8.65%	8.65%
648 Longwood	S	1,779.0	2.12%	2.12%
649 Wedgefield	W	1,549.8	1.84%	
649 Wedgefield	S	1,526.8	1.82%	3.66%
672 Cypress Lakes	W	1,216.5	1.45%	
672 Cypress Lakes	S	1,123.3	1.34%	2.78%
673 Eagle Ridge	S	1,618.1	1.93%	
674 Cross Creek	S	908.0	1.08%	3.01%
680 Sanlando	W	11,857.7	14.11%	
680 Sanlando	S	9,139.5	10.88%	24.99%
690 Sandalhaven	S	1,043.2	1.24%	1.24%
694 Bayside	W	240.4	0.29%	
694 Bayside	S	241.2	0.29%	0.57%
695 South Gate	W	5,726.3	6.81%	6.81%
699 Sandy Creek	W	198.8	0.24%	
699 Sandy Creek	S	167.0	0.20%	0.44%
693 Labrador	W	792.3	0.94%	
693 Labrador	S	775.3	0.92%	1.87%
691 Pennbrooke	W	1,459.5	1.74%	
691 Pennbrooke	S	1,243.0	1.48%	3.22%
692 Hutchinson Island/Irrigation	W	205.7	0.24%	
692 Hutchinson Island	S	176.2	0.21%	0.45%
3101 ACME Water Supply	W	160.5	0.19%	0.19%
Lake Utility Services, Inc.				
628 Clermont	W	205.0	0.24%	
631 Amberhill	W	754.0	0.90%	
632 Highland Point	W	48.5	0.06%	
633 The Oranges	W	99.0	0.12%	
634 Lake Ridge	W	131.0	0.16%	
636 Vistas	W	978.6	1.16%	
661 Crescent Bay	W	93.0	0.11%	
662 Crescent West	W	100.0	0.12%	
663 Four Lakes	W	65.0	0.08%	

ERC COUNT 12/07
 FLORIDA OPERATING COMPANIES

w/p c-3

664 Lake Saunders Acres	W	45.0	0.05%	
665 Lake Crescent Hills	W	127.0	0.15%	
666 Preston Cove	W	105.0	0.12%	
667&668 South Clermont (EDB)	W	2,806.1	3.34%	
675 Lake Groves	W	2,804.3	3.34%	
675 Lake Groves	S	2,744.8	3.27%	13.22%
Utilities, Inc. of Florida				
602 Weathersfield	W	691.0	0.82%	
602 Weathersfield	S	685.5	0.82%	
604 Oakland Shores	W	228.5	0.27%	
606 Little Wekiva	W	61.0	0.07%	
608 Park Ridge	W	98.0	0.12%	
610 Phillips Section	W	80.0	0.10%	
612 Crystal Lake	W	172.0	0.20%	
613 Bartelt Wis Bar	W	163.5	0.19%	
613 Bartelt Wis Bar	S	162.0	0.19%	
614 Ravenna Park/Lincoln Hts.	W	349.5	0.42%	
614 Ravenna Park/Lincoln Hts.	S	249.5	0.30%	
615 Bartelt Buena Vista	W	1,074.8	1.28%	
616 Bear Lake Manor	W	223.5	0.27%	
618 Jansen	W	252.5	0.30%	
620 Crescent Hts	W	277.5	0.33%	
621 Davis Shores	W	43.0	0.05%	
622 Golden Hills-BFF(bulk)	S	8.0	0.01%	
623 Trailwoods	W	299.0	0.36%	
623 Trailwoods	S	293.0	0.35%	
624 Oakland Hills	W	181.0	0.22%	
624 Oakland Hills	S	180.0	0.21%	
626 Summertree	S	1,031.0	1.23%	
626 Summertree	W	1,219.0	1.45%	
629 Orangewood	W	560.3	0.67%	
630 Golden Hills	W	448.6	0.53%	
635 Crownwood	W	81.8	0.10%	
635 Crownwood	S	58.8	0.07%	
637 Lake Tarpon	W	430.9	0.51%	11.43%
Total Florida		84,035.1	100.00%	100.00%

ERC COUNT 12/07
 FLORIDA OPERATING COMPANIES

w/p c-4

<u>Neal, William</u>	<u>System</u>		<u>ERC Count (1)</u>	<u>Percentage to Total</u>	
646	Tierre Verde	S	2,416.9	12.02%	12.02%
643	Eastlake	W	910.8	4.53%	
643	Eastlake	S	872.8	4.34%	8.87%
644	Pebble Creek	W	1,476.5	7.35%	
644	Pebble Creek	S	1,423.5	7.08%	14.43%
672	Cypress Lakes	W	1,216.5	6.05%	
672	Cypress Lakes	S	1,123.3	5.59%	11.64%
645	Mid-County	S	3,354.6	16.69%	16.69%
Utilities, Inc. of Florida					
629	Orangewood	W	1,798.6	8.95%	
614	Ravenna Park/Lincoln Hts.	S	411.5	2.05%	
626	Summertree	S	1,031.0	5.13%	
626	Summertree	W	1,219.0	6.06%	
637	Lake Tarpon	W	430.9	2.14%	24.33%
694	Bayside	W	240.4	1.20%	
694	Bayside	S	241.2	1.20%	2.40%
693	Labrador	W	792.3	3.94%	
693	Labrador	S	775.3	3.86%	7.80%
699	Sandy Creek	W	198.8	0.99%	
699	Sandy Creek	S	167.0	0.83%	1.82%
			<u>20,100.9</u>	<u>100.00%</u>	<u>100.00%</u>
<u>Finehirsh, Jeffrey</u>	<u>System</u>		<u>ERC Count (1)</u>	<u>Percentage to Total</u>	
<u>Gunther, Mathew</u>					
<u>Szczenkowski, Stephen</u>					
645	Mid-County	S	3,354.6	100.00%	100.00%
			<u>3,354.6</u>	<u>100.00%</u>	<u>100.00%</u>
<u>Devers, Joe</u>	<u>System</u>		<u>ERC Count (1)</u>	<u>Percentage to Total</u>	
<u>Dodd, Donald</u>					
<u>Garcia Jr, Ismael</u>					
673	Eagle Ridge	S	1,618.1	64.06%	
674	Cross Creek	S	908.0	35.94%	100.00%
			<u>2,526.1</u>	<u>100.00%</u>	<u>100.00%</u>

ERC COUNT 12/07
 FLORIDA OPERATING COMPANIES

w/p c-4

<u>Stewart, Malcolm</u>	<u>System</u>		<u>ERC Count (1)</u>	<u>Percentage to Total</u>	
641 Lake Placid		W	138.9	1.45%	
641 Lake Placid		S	136.9	1.43%	2.88%
673 Eagle Ridge		S	1,618.1	16.91%	
674 Cross Creek		S	908.0	9.49%	26.39%
690 Sandalhaven		S	1,043.2	10.90%	10.90%
695 South Gate		W	5,726.3	59.83%	59.83%
			<u>9,571.4</u>	<u>100.00%</u>	<u>100.00%</u>
<u>Kuhns, Joseph</u>	<u>System</u>		<u>ERC Count (1)</u>	<u>Percentage to Total</u>	
644 Pebble Creek		W	1,476.5	50.91%	
644 Pebble Creek		S	1,423.5	49.09%	100.00%
			<u>2,900.0</u>	<u>100.00%</u>	<u>100.00%</u>
<u>Becker, Jeffrey</u> <u>Schultz, Kevin</u> <u>Trant, David</u>	<u>System</u>		<u>ERC Count (1)</u>	<u>Percentage to Total</u>	
695 South Gate		W	5,726.3	100.00%	100.00%
			<u>5,726.3</u>	<u>100.00%</u>	<u>100.00%</u>
<u>Chard, Ronald</u>	<u>System</u>		<u>ERC Count (1)</u>	<u>Percentage to Total</u>	
641 Lake Placid		W	138.9		
643 Eastlake		W	910.8	4.77%	
643 Eastlake		S	872.8	4.57%	9.34%
644 Pebble Creek		W	1,476.5	7.73%	
644 Pebble Creek		S	1,423.5	7.46%	15.19%
672 Cypress Lakes		W	1,216.5	6.37%	
672 Cypress Lakes		S	1,123.3	5.88%	12.25%
Utilities, Inc. of Florida					
629 Orangewood		W	1,798.6	9.42%	
626 Summertree		W	1,219.0	6.38%	
637 Lake Tarpon		W	430.9	2.26%	18.06%
640 Miles Grant		W	1,122.1	5.88%	5.88%
695 South Gate		W	5,726.3	29.99%	29.99%
693 Labrador		W	792.3	4.15%	
693 Labrador		S	775.3	4.06%	8.21%
692 Hutchinson Island/Irrigation		W	205.7	1.08%	1.08%
			<u>19,093.6</u>	<u>100.00%</u>	<u>100.00%</u>

<u>Franklin, Kennedy</u>		<u>System</u>	<u>ERC Count (1)</u>	<u>Percentage to Total</u>	
646	Tierre Verde	S	2,416.9	16.83%	16.83%
643	Eastlake	W	910.8	6.34%	
643	Eastlake	S	872.8	6.08%	12.42%
644	Pebble Creek	W	1,476.5	10.28%	
644	Pebble Creek	S	1,423.5	9.91%	20.19%
672	Cypress Lakes	W	1,216.5	8.47%	
672	Cypress Lakes	S	1,123.3	7.82%	16.29%
645	Mid-County	S	3,354.6	23.36%	23.36%
693	Labrador	W	792.3	5.52%	
693	Labrador	S	775.3	5.40%	10.91%
			14,362.5	100.00%	100.00%
<u>Wright, Jason</u>		<u>System</u>	<u>ERC Count (1)</u>	<u>Percentage to Total</u>	
693	Labrador	W	792.3	50.54%	
693	Labrador	S	775.3	49.46%	100.00%
			1,567.6	100.00%	100.00%
<u>Buono, Robert</u>		<u>System</u>	<u>ERC Count (1)</u>	<u>Percentage to Total</u>	
646	Tierre Verde	S	2,416.9	41.88%	41.88%
645	Mid-County	S	3,354.6	58.12%	58.12%
			5,771.5	100.00%	100.00%
<u>Davis, Neville</u>		<u>System</u>	<u>ERC Count (1)</u>	<u>Percentage to Total</u>	
644	Pebble Creek	W	1,476.5	18.02%	
644	Pebble Creek	S	1,423.5	17.38%	35.40%
672	Cypress Lakes	W	1,216.5	14.85%	
672	Cypress Lakes	S	1,123.3	13.71%	28.56%
640	Miles Grant	W	1,122.1	13.70%	
640	Miles Grant	S	1,055.6	12.88%	26.58%
693	Labrador	S	775.3	9.46%	9.46%
			8,192.8	100.00%	100.00%

<u>Wierzbicki, Anthony</u>	<u>System</u>		<u>ERC Count (1)</u>	<u>Percentage to Total</u>	
641 Lake Placid		W	138.9	0.71%	
641 Lake Placid		S	136.9	0.70%	1.41%
643 Eastlake		W	910.8	4.64%	
643 Eastlake		S	872.8	4.45%	9.09%
644 Pebble Creek		W	1,476.5	7.53%	
644 Pebble Creek		S	1,423.5	7.26%	14.78%
672 Cypress Lakes		W	1,216.5	6.20%	
672 Cypress Lakes		S	1,123.3	5.73%	11.93%
673 Eagle Ridge		S	1,618.1	8.25%	
674 Cross Creek		S	908.0	4.63%	12.88%
645 Mid-County		S	3,354.6	17.10%	17.10%
Utilities, Inc. of Florida					
629 Orangewood		W	1,073.3	5.47%	
614 Ravenna Park/Lincoln Hts.		S	411.5	2.10%	
626 Summertree		S	1,031.0	5.26%	
626 Summertree		W	1,219.0	6.21%	
637 Lake Tarpon		W	430.9	2.20%	21.23%
690 Sandalhaven		S	1,043.2	5.32%	5.32%
694 Bayside		W	240.4	1.23%	
694 Bayside		S	241.2	1.23%	2.45%
692 Hutchinson Island/Irrigation		W	205.7	1.05%	
692 Hutchinson Island		S	176.2	0.90%	1.95%
699 Sandy Creek		W	198.8	1.01%	
699 Sandy Creek		S	167.0	0.85%	1.86%
			<u>19,618.1</u>	<u>100.00%</u>	<u>100.00%</u>

ERC COUNT 12/07
 FLORIDA OPERATING COMPANIES

w/p c-4

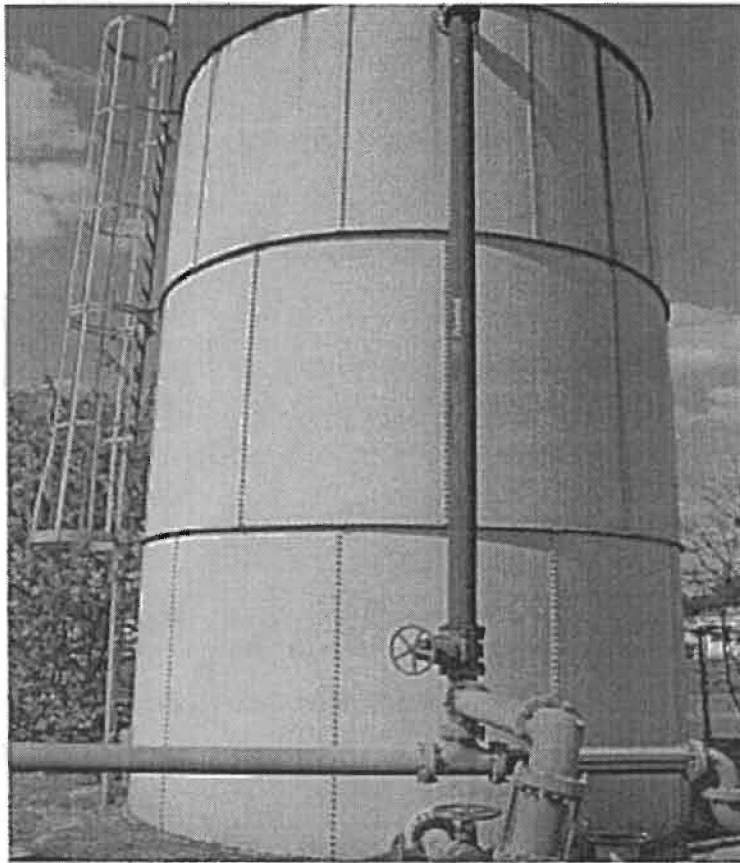
<u>Wilson, Michael</u>	<u>System</u>		<u>ERC Count (1)</u>	<u>Percentage to Total</u>	
641 Lake Placid		W	138.9	0.48%	
641 Lake Placid		S	136.9	0.47%	0.95%
643 Eastlake		W	910.8	3.13%	
643 Eastlake		S	872.8	3.00%	6.13%
644 Pebble Creek		W	1,476.5	5.08%	
644 Pebble Creek		S	1,423.5	4.89%	9.97%
672 Cypress Lakes		W	1,216.5	4.18%	
672 Cypress Lakes		S	1,123.3	3.86%	8.04%
673 Eagle Ridge		S	1,618.1	5.56%	
674 Cross Creek		S	908.0	3.12%	8.68%
645 Mid-County		S	3,354.6	11.53%	11.53%
Utilities, Inc. of Florida					
629 Orangewood		W	1,073.3	3.69%	
614 Ravenna Park/Lincoln Hts.		S	411.5	1.41%	
626 Summertree		S	1,031.0	3.54%	
626 Summertree		W	1,219.0	4.19%	
637 Lake Tarpon		W	430.9	1.48%	14.32%
640 Miles Grant		W	1,122.1	3.86%	
640 Miles Grant		S	1,055.6	3.63%	7.49%
690 Sandalhaven		S	1,043.2	3.59%	3.59%
694 Bayside		W	240.4	0.83%	
694 Bayside		S	241.2	0.83%	1.66%
695 South Gate		W	5,726.3	19.68%	19.68%
693 Labrador		W	792.3	2.72%	
693 Labrador		S	775.3	2.67%	5.39%
692 Hutchinson Island/Irrigation		W	205.7	0.71%	
692 Hutchinson Island		S	176.2	0.61%	1.31%
699 Sandy Creek		W	198.8	0.68%	
699 Sandy Creek		S	167.0	0.57%	1.26%
			<u>29,089.7</u>	<u>100.00%</u>	<u>100.00%</u>

<u>Worrell, David</u>	<u>System</u>		<u>ERC Count (1)</u>	<u>Percentage to Total</u>	
646	Tierre Verde	S	2,416.9	13.34%	13.34%
643	Eastlake	W	910.8	5.03%	
643	Eastlake	S	872.8	4.82%	9.85%
644	Pebble Creek	W	1,476.5	8.15%	
644	Pebble Creek	S	1,423.5	7.86%	16.01%
672	Cypress Lakes	W	1,216.5	6.71%	
672	Cypress Lakes	S	1,123.3	6.20%	12.92%
645	Mid-County	S	3,354.6	18.52%	18.52%
	Utilities, Inc. of Florida				
629	Orangewood	W	1,073.3	5.92%	
626	Summertree	S	1,031.0	5.69%	
626	Summertree	W	1,219.0	6.73%	
637	Lake Tarpon	W	430.9	2.38%	20.72%
693	Labrador	W	792.3	4.37%	
693	Labrador	S	775.3	4.28%	8.65%
			<u>18,116.7</u>	<u>100.00%</u>	<u>100.00%</u>

1	A	B	C	D	E	F	G
	NAME	LOCATIONCODE	HOMEDPARTMENT	ANNUALSALARY	GROSS	OTHSR	OTEARN
2	Abbott, Loretta	00855	615500	29,328.00	20,146.30	178.25	3645.46
3	Alday, Christopher	00855	615000	24,044.80	14,382.72	0	0
4	Alday, James	00855	615000	32,739.20	20,150.85	61.75	1431.09
5	Anderson, Daniel	00855	615000	42,473.60	28,101.12	128	3788.18
6	Arnoux, Diane	00850	611000	51,750.40	33,218.96	37	1334.56
7	Austin Jr, Arthur	00855	615000	33,654.40	21,966.68	26	606.84
8	Bailey, Alan	00855	615000	36,420.80	20,235.62	74	1893.12
9	Barrett, Jason	00850	614000	49,300.08	27,913.34	0	0
10	Becker, Jeffrey	00855	615000	43,014.40	29,481.04	61	1830.03
11	Bell, William	00850	613500	82,800.24	47,344.85	0	0
12	Bennett, Kimberly	00855	614500	29,536.00	21,880.22	221.25	4568.13
13	Bishop, Alvin	00855	615000	27,684.80	19,636.88	147	2843.06
14	Blasco, Christopher	00855	615000	29,764.80	18,100.83	17	352.42
15	Bonagura, John	00855	613500	69,798.00	39,454.06	0	0
16	Brown, Donna	00855	615000	23,920.00	13,243.92	0	0
17	Buono, Robert	00855	615000	35,880.00	23,259.89	83	2074.21
18	Callahan, Robert	00855	615000	31,366.40	17,501.79	0	0
19	Cardinal, Anthony	00855	615000	32,302.40	19,063.06	18	405.28
20	Carver, Nathaniel	00855	615000	64,272.00	38,756.01	0	0
21	Casados Jr, Jimmy	00850	610500	105,040.08	69,253.42	0	0
22	Ceballos, Isabel	00855	614500	28,683.20	19,767.22	178.75	3574.11
23	Chandler, Matthew	00855	614500	30,867.20	18,290.78	25	537.75
24	Chang, Tae	00850	611500	27,040.00	7,624.50	0	0
25	Chard, Ronald	00855	615000	35,526.40	20,741.66	47.5	1180.01
26	Christian, Elise	00855	614500	50,731.20	32,723.02	86	3025.1
27	Coates, Bill	00855	615000	60,610.08	36,051.38	0	0
28	Coffee Jr., John	00855	615000	33,425.60	23,456.19	187.9	4404.33
29	Cook, James	00855	615000	41,100.80	28,998.02	152	4368.66
30	Cooler, Ronald	00855	615000	34,444.80	21,157.80	175.5	4219.56
31	Cooper, Robert	00855	615000	39,852.80	22,397.56	29.5	819.07
32	Crossett, Lisa	00850	612000	203,500.08	167,858.38	0	0
33	Dann, Brian	00850	613000	51,000.00	16,557.68	0	0
34	Dave, Hardik	00850	613000	41,496.00	24,739.25	76.8	2132.37
35	Devers, Joe	00855	615000	46,800.00	6,738.75	43	1451.25
36	Di Marca, Michelle	00850	611000	66,885.12	38,073.72	0	0
37	Dipasquale, Susan	00855	615500	30,139.20	16,886.32	0	0
38	Dodd, Donald	00855	615000	41,600.00	2,080.00	10	300
39	Dryjanski, Michael	00850	614000	99,552.00	56,296.00	0	0
40	Durham, Rick	00855	613500	140,000.16	81,666.76	0	0
41	Ebert, Shawn	00855	615000	27,913.60	17,343.90	77.5	1492.66
42	Eskew, James	00855	615000	40,830.40	30,334.91	236.75	6779.15
43	Federico, Antoinette	00850	611000	57,000.24	31,789.98	0	0
44	Finch, Allan	00855	615000	32,884.80	20,158.66	64	1476.02
45	Finehirsh, Jeffrey	00855	615000	33,654.40	23,550.86	103.5	2485.12
46	Flynn, Patrick	00855	615000	118,678.56	66,946.88	0	0
47	Franklin, Kennedy	00855	615000	30,284.80	16,771.44	8	171.36
48	Friedman, Avelina	00850	611000	51,417.60	37,336.54	222.5	7980.79
49	Galarza, Richard	00855	615000	28,121.60	18,149.89	122.75	2393.63
50	Garcia Jr, Ismael	00855	615000	40,372.80	29,844.07	224	6330.71
51	Gentilucci, Domenic	00855	615000	54,078.72	31,381.37	0	0
52	Georgiev, Lena	00850	614000	79,695.12	44,099.58	0	0
53	Godwin, Patrick	00855	615000	43,097.60	33,741.68	296	8862.48
54	Gomez, Samuel	00850	611000	38,396.80	22,466.04	16.75	450.24
55	Gongre, Bryan	00855	615000	80,647.92	48,395.22	0	0
56	Gosnell, Scotty	00855	615000	62,700.00	36,725.00	0	0
57	Grainger Jr, Leroy	00855	615000	30,139.20	14,281.36	7.5	158.24
58	Granite, Deborah	00850	614000	49,379.20	32,878.32	145.5	4934.66
59	Guidice, Joyce	00850	612500	53,830.40	31,914.78	22.25	840.98
60	Gunther, Mathew	00855	615000	35,796.80	25,198.89	181	4522.01
61	Habery, Stephen	00855	615000	54,579.20	31,905.62	27.5	1040.74
62	Hamilton, Don	00855	615000	34,361.60	20,052.50	51	1228.22
63	Hampton, Jerome	00855	615000	39,187.20	24,226.00	65.5	1790.08

	A	B	C	D	E	F	G
64	Hanks, Peggy	00855	615500	29,120.00	3,461.50	0	0
65	Harrell, Janice	00850	611000	35,006.40	22,831.23	134.75	3325.84
66	Harris, Khalifat	00850	611000	62,498.64	39,083.30	0	0
67	Haws, Scotty	00855	613500	73,673.04	41,678.74	0	0
68	Haynes Jr, John	00850	611000	125,000.16	31,250.04	0	0
69	Hogue, Raymond	00855	615000	37,939.20	24,379.60	80.5	2147.12
70	Hollister, Jimmie	00855	615000	27,955.20	17,593.72	96.75	1866.34
71	Holsapple, Roger	00855	615000	42,972.80	36,443.08	360.5	10690.65
72	Hopkins, John	00850	612500	90,000.00	47,308.32	0	0
73	Hoy, John	00850	612000	191,500.08	157,958.43	0	0
74	Kazlo, Allen	00850	611000	124,999.92	21,794.82	0	0
75	Keys, Thomas	00855	615000	48,422.40	28,111.92	32.5	1086.16
76	Kim, Christine	00850	611000	91,412.64	61,992.76	0	0
77	Krugler, Adrienne	00850	613500	66,353.28	42,430.00	0	0
78	Krugman, Stacy	00850	611500	67,275.12	38,106.34	0	0
79	Kuhns, Joseph	00855	615000	43,929.60	29,988.60	134	4109.04
80	Leard, Mark	00855	615000	27,996.80	16,761.73	71.5	1394.25
81	Learned, Scott	00855	615000	27,705.60	16,131.42	26.25	505.16
82	Lingeman, Samuel	00850	611000	55,600.08	30,239.42	0	0
83	Lorenzo, Alexander	00855	615000	37,315.20	24,976.47	142.5	3729.39
84	Lubertozzi, Steven	00850	612000	191,500.08	157,958.43	0	0
85	Luppino, Nancy	00850	611000	50,003.20	22,547.97	14	491.19
86	Luppino, Phyllis	00850	611000	42,744.00	31,341.69	221.75	6581.56
87	Marinelli, John	00855	615000	62,308.08	36,006.48	0	0
88	Martinov, Slobodan	00850	611000	49,999.92	8,958.93	0	0
89	Marzouk, Michelle	00850	614000	31,075.20	6,553.50	0	0
90	Matthews, Mary	00850	614000	60,736.00	6,002.06	1	43.8
91	McGrain, Pamela	00850	613000	51,188.80	32,318.65	73.75	2630.02
92	McLean, Pamela	00850	611000	54,399.84	29,373.32	0	0
93	McPhee, Allson	00855	615000	41,204.80	24,868.00	80.5	2185.2
94	Miranda, Margarita	00850	611000	41,142.40	21,755.38	100	2881.55
95	Morrell, Matthew	00855	615000	27,768.00	17,442.17	98.25	1893.08
96	Neal, William	00855	615000	58,969.68	34,133.72	0	0
97	Neyzelman, Dimitry	00850	614000	72,582.48	41,248.62	0	0
98	Noell, Sandra	00855	611000	29,952.00	16,812.96	0	0
99	Ostler, Tom	00850	613000	109,999.92	56,692.20	0	0
100	Overton, Michael	00855	615000	37,772.80	20,475.88	46.25	1046.92
101	Pannos, Nicholas	00850	613000	40,996.80	23,019.09	31	849.61
102	Parrish, Raymond	00855	615000	35,568.00	22,216.60	74.75	1860.14
103	Paule, Nancy	00850	611500	35,048.00	19,995.53	7.25	179.66
104	Paulk, Stella	00855	614500	34,840.00	24,460.50	179.25	4331.58
105	Pennington, Jonathan	00855	615000	27,040.00	15,840.89	54.5	1021.89
106	Pfouts, Steve	00855	615000	42,369.60	26,008.00	73	2155.05
107	Phillips, Christopher	00855	615000	33,924.80	18,960.40	0	0
108	Pinder, Jeffrey	00855	615000	45,427.20	28,951.24	110.75	3504.07
109	Povich, Erin	00850	614000	53,061.12	29,944.26	0	0
110	Powell, Trevor	00855	615000	34,444.80	21,861.60	85.5	2061.24
111	Raines, Craig	00855	615000	42,182.40	23,450.25	88	2583.37
112	Raponi, Ann	00855	615500	32,676.80	21,421.11	86.5	1963.81
113	Remigio, Roberto	00855	615000	24,190.40	13,612.12	5	83.85
114	Roberts Jr., Eddie	00855	615000	41,412.80	25,886.95	64.25	1806.31
115	Rochow, Michelle	00850	614000	57,478.32	32,664.90	0	0
116	Rose, Kendra	00850	613500	67,600.08	38,295.92	0	0
117	Sasic, Karen	00855	615500	60,349.20	37,946.87	0	0
118	Scherer, William	00850	611000	75,500.88	43,291.82	0	0
119	Schiopu, Mircea	00850	611500	34,216.00	22,324.45	114.5	2739.08
120	Schneider, Keith	00855	615000	34,590.40	20,569.07	26	631.77
121	Schultz, Kevin	00855	615000	30,139.20	18,726.27	18	383.15
122	Schumacher, Lawrence	00850	612000	349,300.08	303,758.44	0	0
123	Schwades, Charles	00855	615000	54,252.00	31,480.90	0	0
124	Serrill III, George	00850	611000	77,200.08	49,033.38	0	0
125	Shoffstall, David	00855	615000	41,662.40	29,227.65	154	4439.01
126	Shrake, Brian	00850	614000	45,562.08	25,971.92	0	0
127	Shue, Mickey	00855	615000	36,878.40	22,002.12	39.5	1014.96

	A	B	C	D	E	F	G
128	Sillitoe, Jacqueline	00855	614500	25,126.40	18,329.65	220.5	3892.18
129	Sillitoe, Kathy	00855	615000	58,981.44	34,134.89	0	0
130	Sillitoe, Terry	00855	615000	32,302.40	10,609.53	0	0
131	Simmons, Rodney	00850	613500	62,400.00	35,475.00	0	0
132	Smith, Donald	00855	615000	33,446.40	19,909.64	44.5	1047.32
133	Smutny Jr., Thomas	00850	613000	61,050.00	32,587.54	0	0
134	Stefano, Barry	00855	615000	31,491.20	19,717.23	39	851.76
135	Stewart, Malcolm	00855	615000	62,083.68	35,383.34	0	0
136	Stone, Leslie	00850	611500	63,800.16	34,316.72	0	0
137	Stover, John	00850	612000	207,000.00	170,750.00	0	0
138	Sudduth, Donald	00850	612000	160,699.92	132,541.68	0	0
139	Sudol, Corey	00855	615000	39,000.00	28,351.22	150.5	4374.58
140	Swegheimer, James	00855	615000	46,259.20	27,763.32	40	1305.16
141	Szczepkowski, Stephen	00855	615000	44,054.40	25,998.47	19	583.11
142	Taylor, Kenneth	00855	615000	30,846.40	19,032.20	36	770.04
143	Trant, David	00855	615000	27,996.80	16,871.98	17	331.5
144	Triggiani, Elizabeth	00850	612500	39,000.00	6,194.53	32.25	907.03
145	Trovinger, Ferrellyn	00855	614500	32,240.00	24,805.43	230.75	5160.43
146	Tzareff, Paul	00855	615000	25,958.40	16,712.20	104.5	1881
147	Valrie, Lawanda	00850	614000	29,993.60	10,435.94	0	0
148	Vanmeter Jr, Nathan	00855	615000	40,851.20	24,189.66	38.75	1102.18
149	Wakefield, Roland	00855	615000	43,680.00	1,344.00	0	0
150	Watkins, Cedric	00855	615000	31,948.80	18,519.94	9.5	210.48
151	Weeks, Kirsten	00850	614000	81,510.00	49,792.50	0	0
152	White, Ronald	00855	615000	45,177.60	27,175.21	60.25	1887.94
153	Wierzbicki, Anthony	00855	615000	70,516.08	43,168.45	0	0
154	Williams, Elisa	00855	615000	40,144.00	23,423.87	104.5	2771.87
155	Wilson, Michael	00855	615000	79,002.00	47,407.50	0	0
156	Woodside, Michael	00855	615000	37,648.00	8,393.60	2	52.8
157	Worrell, David	00855	615000	37,440.00	5,301.00	31	837
158	Wright, Jason	00855	615000	38,646.40	23,646.80	161.3	4250.97
159	Wright, Thomas	00855	615000	33,259.20	18,626.15	1	23.18
160	Yap Jr., Lowell	00850	614000	42,436.08	24,136.38	0	0
161	Yount, Darrin	00850	613500	106,605.12	62,186.32	0	0
162	Zawadzki, Diane	00850	613500	69,966.24	39,468.08	0	0



**Utilities Inc. of Florida
200 Weathersfield Ave.
Altamonte Springs, FL 32714
34,000 Gallon Standpipe
RE: Labrador Reservoir
April 19, 2004
Mike Dunn, Primary Contact
(407) 869-1919**

Liquid Engineering Corporation (LEC) Job No. 22191-E

If there are any questions concerning the information contained within this report, please call
Liquid Engineering Corp. at 1-800-438-2187

10/2/04

**Utilities Inc. of Florida
34,000 Gallon Standpipe
(LEC) Job No. 22191-E**

Due to the heightened awareness of the possibility of unauthorized access to water tanks and water contamination, ladder guards, locks on manways, and locks on all valves should be considered a public safety requirement.

We recommend installing an electronic monitoring system on the roof hatch and replacing all standard air vents with Security Vent Shrouds.

**Utilities Inc. of Florida
34,000 Gallon Standpipe
(LEC) Job No. 22191-E**

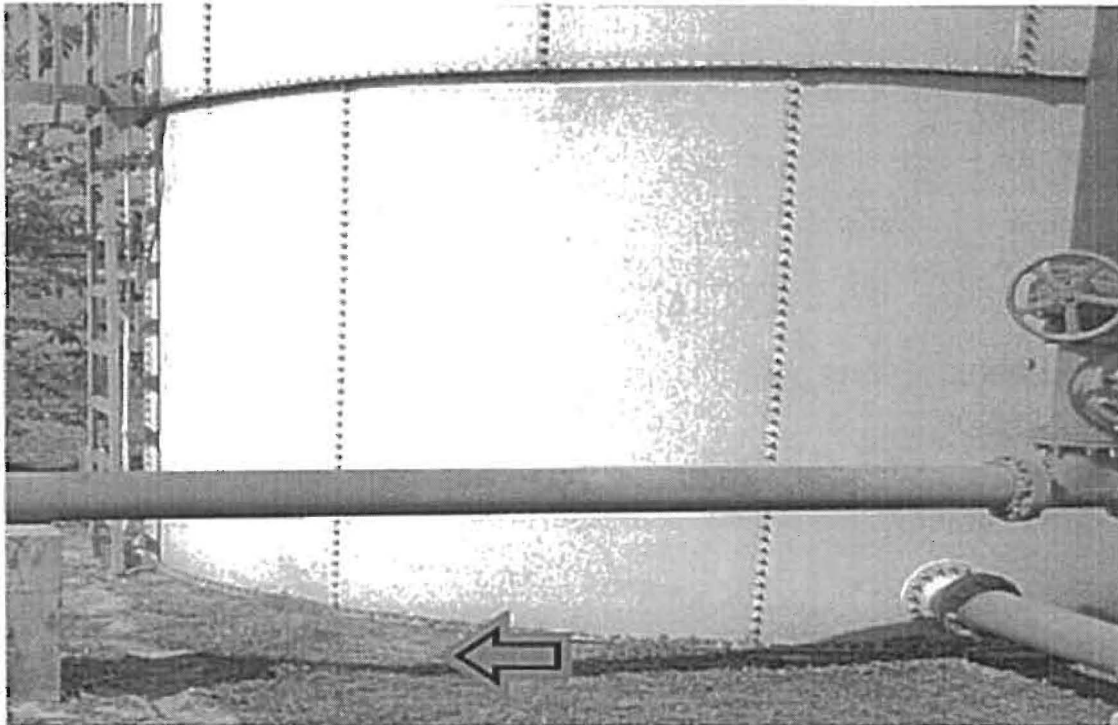


Photo shows the condition of the foundation. We recommend clearing any dirt, debris and other loose gravel away from the tank foundation, down to a minimum 6" below top of foundation as required by AWWA D100-96, Section 12.6.1: Foundations for flat bottom tanks. (see glossary pg. 3). This should be done by a local excavating company.

We further recommend repairing any cracks and spalling in the concrete with a commercial non-shrinking grout, then caulking around the base of the tank to foundation connection to prevent water from entering under the tank and sealing the foundation with a concrete sealant.

We also recommend electrically grounding the tank for lightning protection as required by OSHA, (general duty clause) (see glossary).

Utilities Inc. of Florida
34,000 Gallon Standpipe
(LEC) Job No. 22191-E

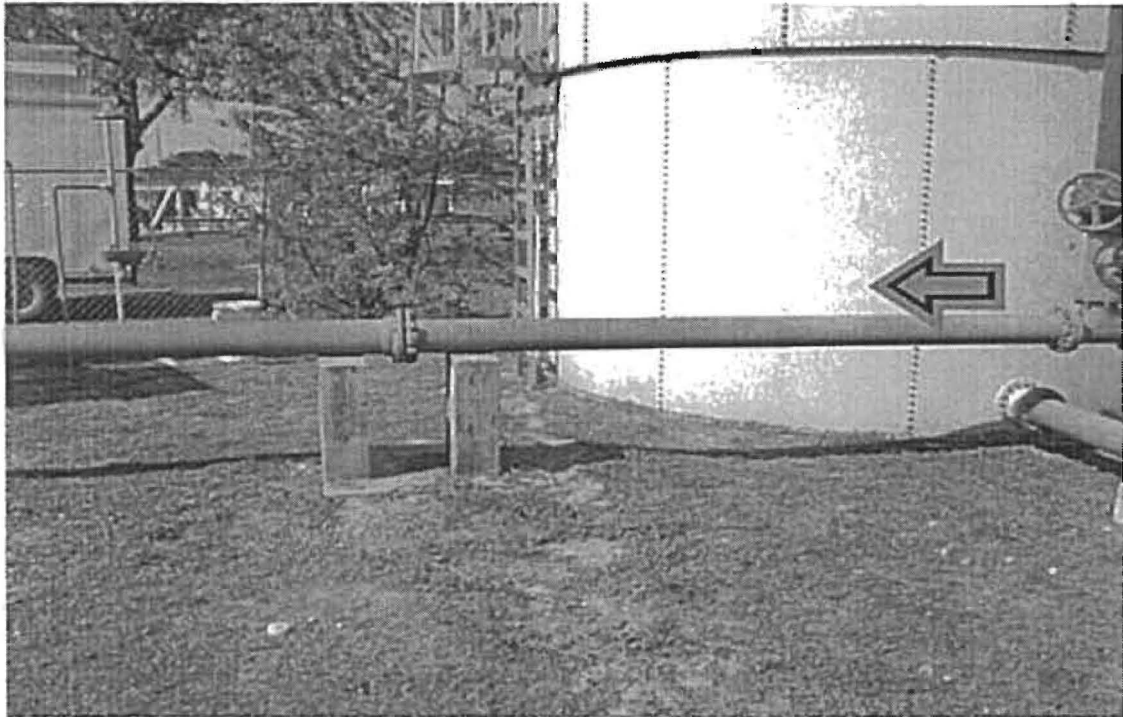


Photo shows the condition of the tank shell. The tank is not equipped with a manway. The following items are required to bring tank in compliance with AWWA D100-96, section 7.1: Shell Manways, OSHA, and TSS, (see glossary pg. 8):

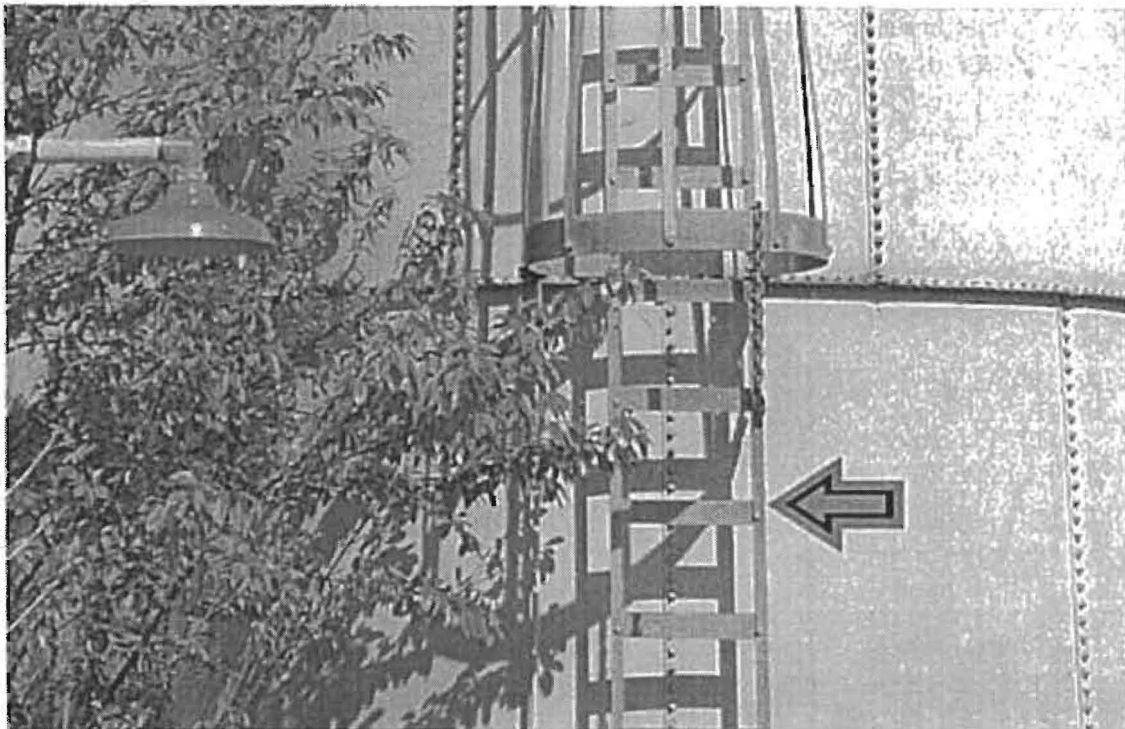
We recommend:

Install a 36" manway

check to see if installed

Note: For safety reasons we have recommended a 36" manway instead of the required 24" manway.

Utilities Inc. of Florida
34,000 Gallon Standpipe
(LEC) Job No. 22191-E



Shell ladder in above photo is in compliance with OSHA and AWWA D100-96, Section 7.4: Ladders, 7.4.1: Outside Tank Ladder, regulations. We recommend installing a cable type ladder safety device, and posting a **Fall Protection Required** sign.

For adequate fall protection, we have recommended installing a cable type ladder device.

**Utilities Inc. of Florida
34,000 Gallon Standpipe
(LEC) Job No. 22191-E**

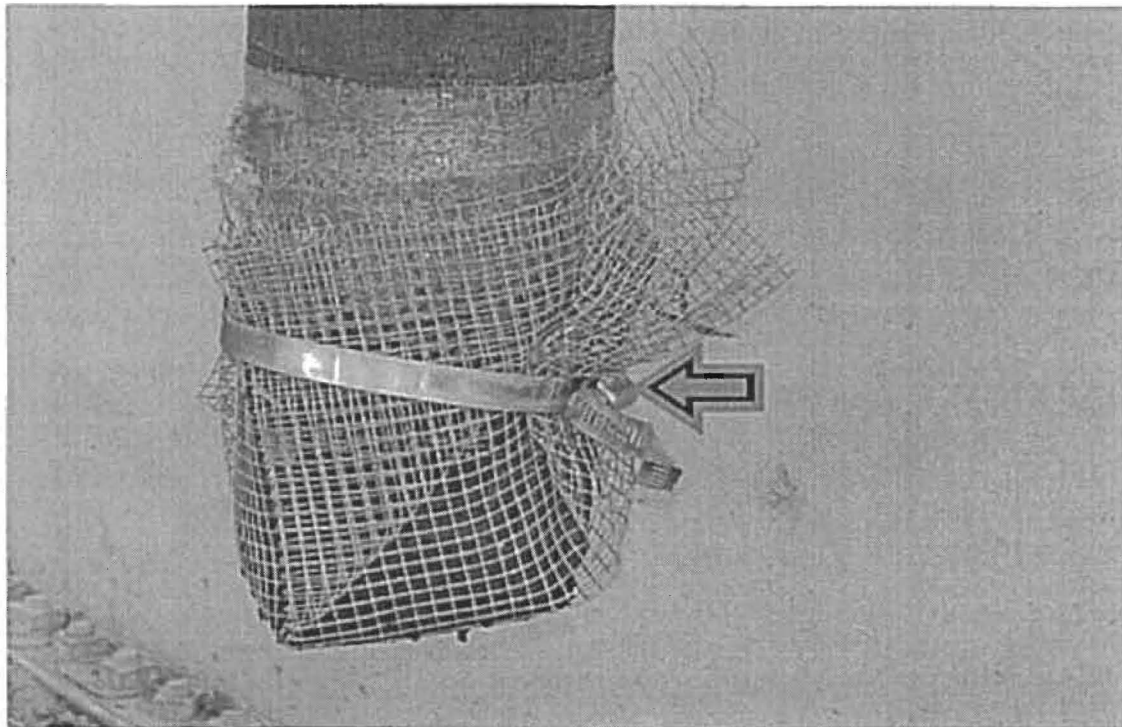


Photo shows the overflow pipe. The overflow pipe is not equipped with a flapper valve. We recommend installing an elbow to direct water away from the tank, a flapper valve and new screen on the existing overflow pipe and a splash pad to direct water away from the tank foundation.

**Utilities Inc. of Florida
34,000 Gallon Standpipe
(LEC) Job No. 22191-E**

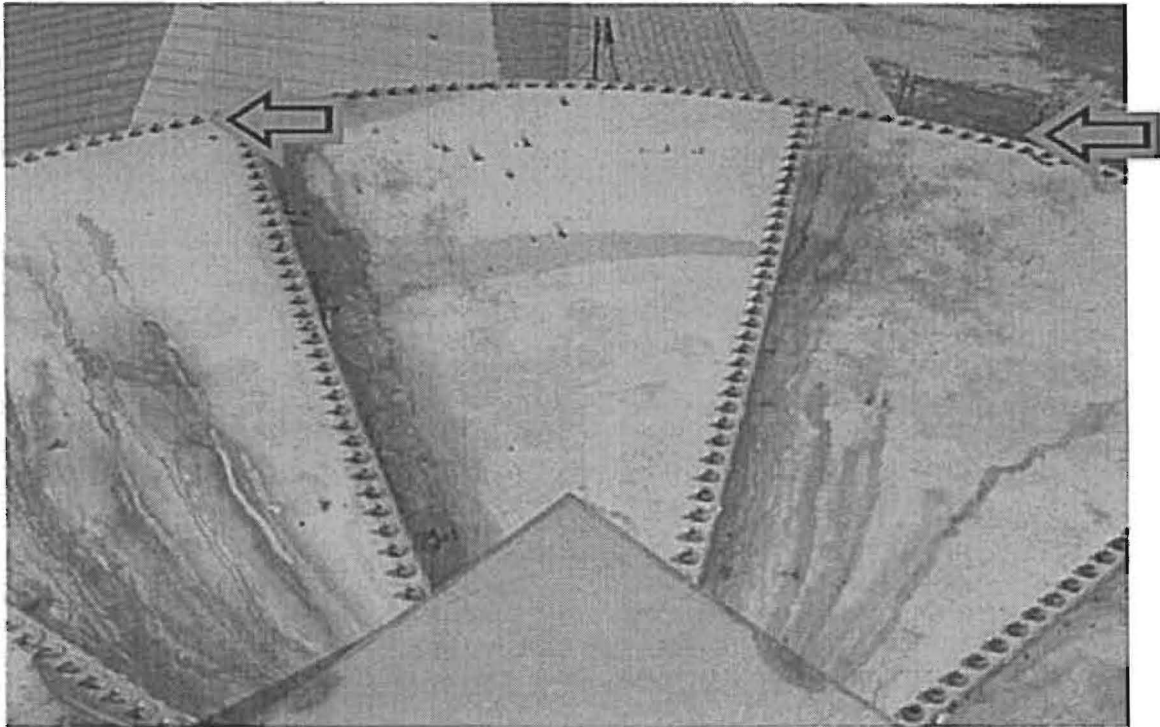


Photo shows the tank roof is not equipped with an OSHA required fall protection system. We recommend installing an approved 42" high handrail system around the circumference of the tank roof, complete with toeboard, intermediate rail and a stainless steel gate chain at the junction of the shell-to-roof access ladder and tank roof as required by OSHA (see glossary).

**Utilities Inc. of Florida
34,000 Gallon Standpipe
(LEC) Job No. 22191-E**

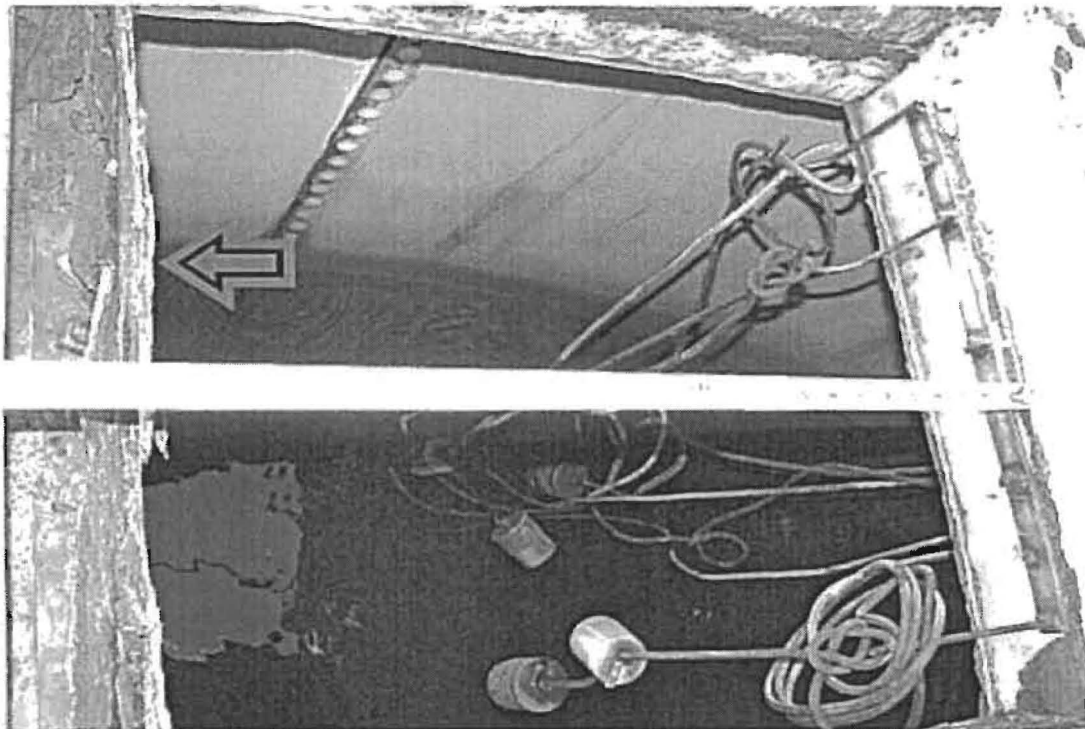


Photo shows the condition of the roof manway. Notice the manway curb is severely deteriorated. Roof openings on this tank require the following to be in compliance with OSHA, AWWA and TSS Section 7.0.8: Access, (see glossary pg. 23):

We recommend:

Replace existing manway with 36" manway

We further recommend:

Install exterior platform for rescue tripod, complete with tripod and winch

Note: For safety reasons we have recommended a 36" manway instead of the required 24" manway.

Utilities Inc. of Florida
34,000 Gallon Standpipe
(LEC) Job No. 22191-E

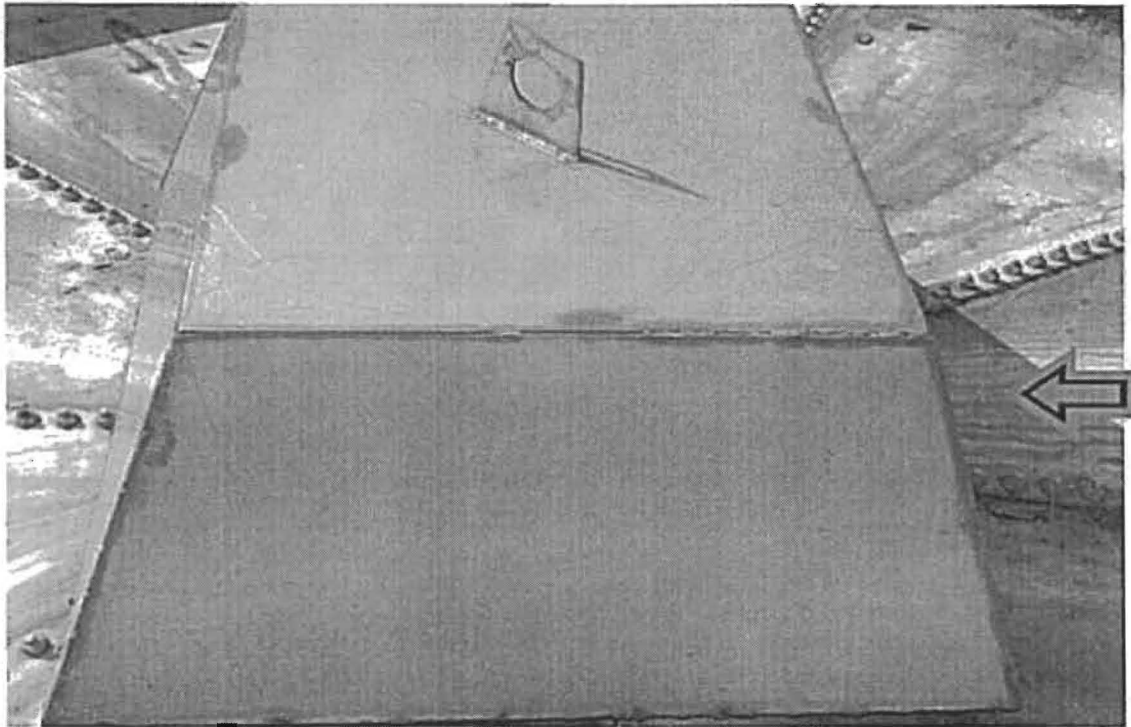
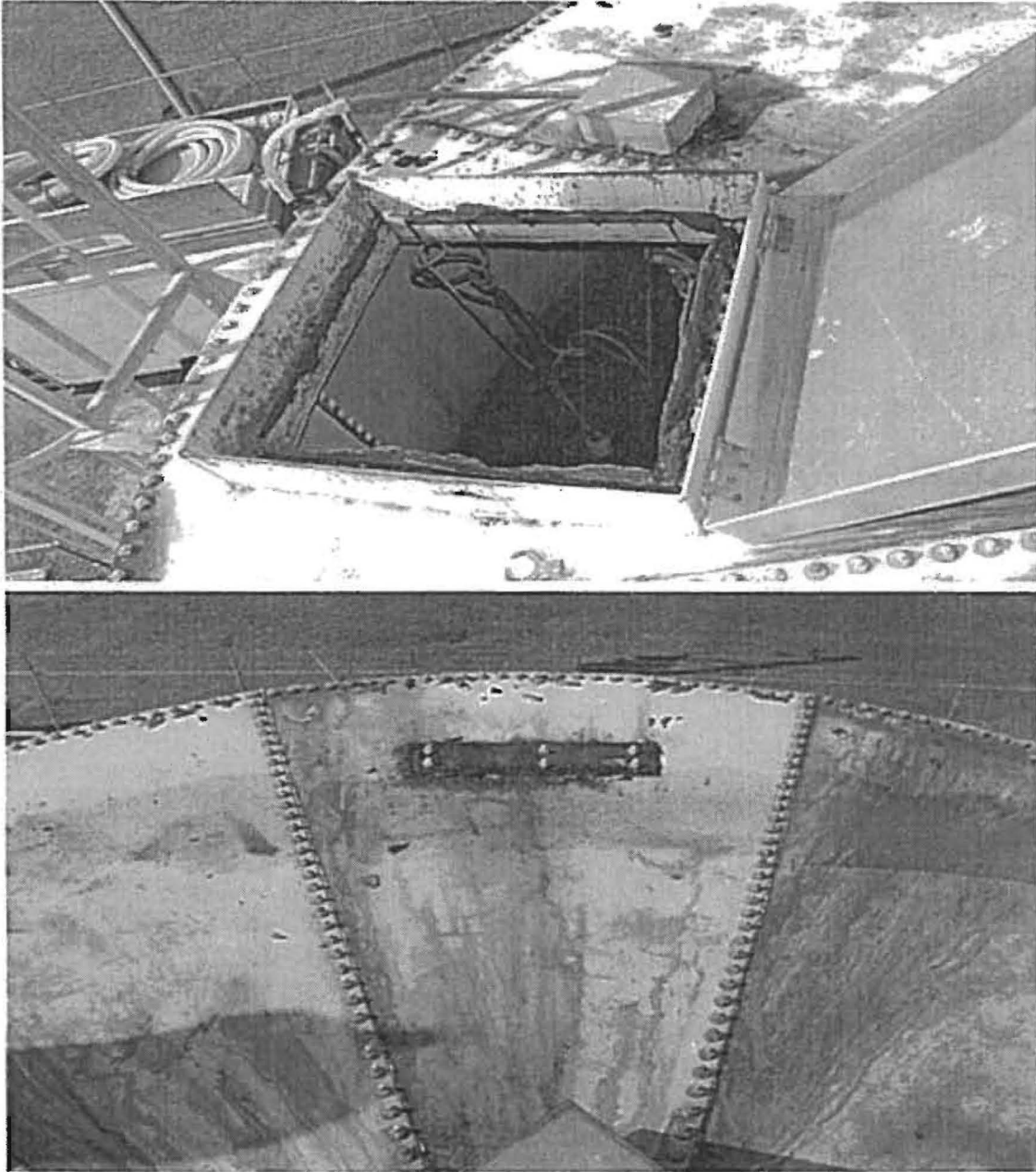


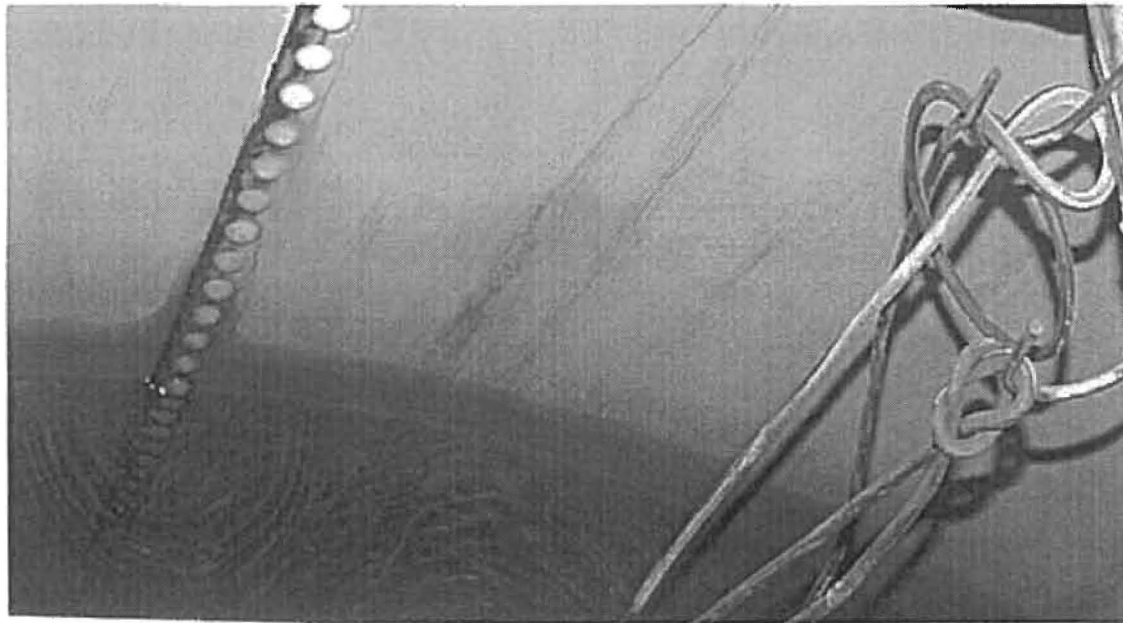
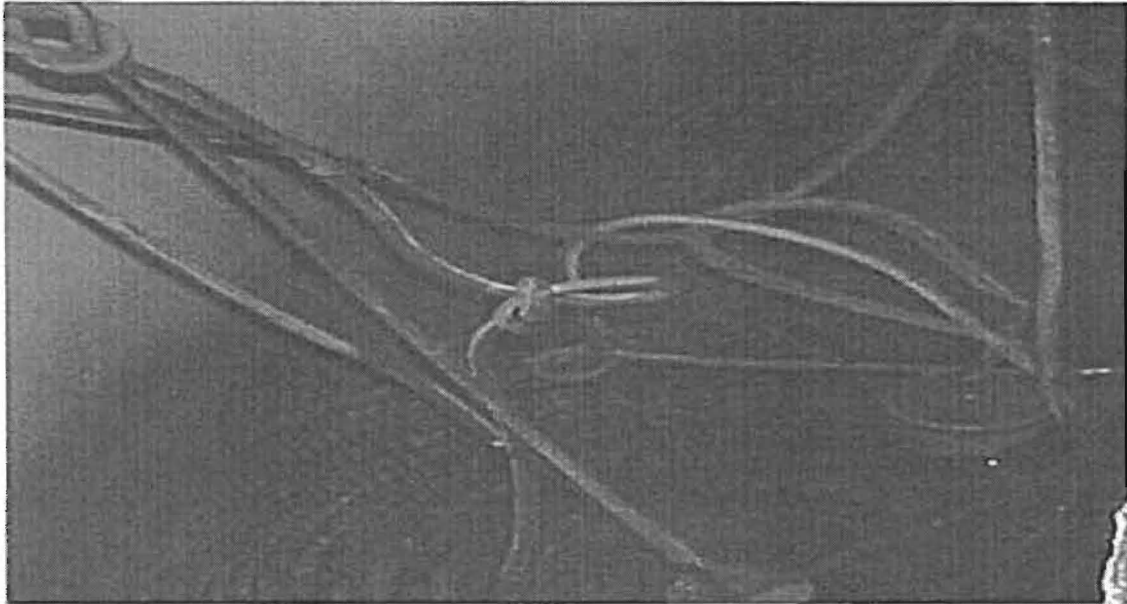
Photo shows the condition of the existing roof vent. **An improperly vented tank may cause external pressure to act on the tank which can cause buckling even at low pressure differential.** We recommend replacing the existing roof vent with a vacuum-pressure, frost proof vent and screen in compliance with AWWA and TSS, (see glossary).

**Utilities Inc. of Florida
34,000 Gallon Standpipe
(LEC) Job No. 22191-E**



Photos show the condition of the exterior paint system. We recommend sand-blasting the tank exterior to an SSPC #6 (commercial) blast, apply one (1) full coat of primer, then applying one (1) finish coat of Alkyd.

**Utilities Inc. of Florida
34,000 Gallon Standpipe
(LEC) Job No. 22191-E**



Photos show the condition of the interior liner. We recommend sandblasting all rusted and abraded areas of the tank interior to an SSPC #10 (near white) blast, brushblast all remaining areas, stripe coating all seams and welds, then applying an epoxy liner to achieve 8-10 mils of dry film thickness.

FOR THE 14

PERIODS ENDING 12 /31/06

CO	SUBD	ACCNT	DESCRIPTION	DEBIT	CREDIT	EFF DATE	JOURNAL	BALANCE
106	*0693	*1862026	--DEF CHGS-TANK MAINT&REP(W				BEG	-
			20561*09610*SUNBELT	150.95			106-AP.INVD-06-21	
			22434*16900*BIO TECH	41,024.58			106-AP.INVD-07-20	
			26626*08189*THOMPSON	5,028.00			106-AP.INVD-09-18	
				46,203.53			NET	46,203.53
							END	46,203.53
			GRAND TOTALS:	46,203.53			BEG	-
							NET	46,203.53
							END	46,203.53

□

REP	PORT DESCRIPTION	#NAME?	LEDGER - G L
LED	GENER ID - GL		
PER	IOD - 01-14		
---	COMPANY		
-->	STRUCTURE - 2		
STR	SECTION - 106		
SEL	TOTAL -		
SUB			
---	SUBDIV		
-->	STRUCTURE - 6		
STR	SECTION - ALL		
SEL	TOTAL -		
SUB			
---	ACCOUNT		
-->	STRUCTURE - 1		
STR	SECTION - 1862026		
SEL	TOTAL -		
SUB			
SEG	MENT - PRIOR YR	ACT	
ZER	NO SUPPRESS - Y		
SUM	AUTO JOURNALS -	N	
SUM	ALL JOURNALS -	N	
PAG	DATE BREAK - N		
SOR	TIME BREAK - N		
PER	IOD BREAK - N		
EFF	EFFECTIVE RATE - N		
DAT	DATE - EFFECTIVE		
SOR	TEST SEQUENCE		
	-1 -COMPANY		
	-2 -SUBDIV		
	-3 -ACCOUNT		

Handwritten mark or signature

020561

20561

ENTERED
JUN 24 2007

SUNBELT RENTALS

INVOICE
SEND ALL PAYMENTS TO:
SUNBELT RENTALS
PO BOX 409211
ATLANTA, GA 30384-9211

3 364

INVOICE NO.	6622414-001
ACCOUNT NO.	3174
INVOICE DATE	6/09/06
PAGE	1

WTP Tank

109610

INVOICE TO 3 364
CAROLINA WATER SERVICE, INC-NC
 Must Have PO #
 PO Box 240908
 Charlotte NC 28224-0908
 |||||

JOB ADDRESS
LABORDORE
 41311 PAQUETTE WAY
 ZEPHYRHILLS, FL 33539
 C#: 704-525-7990 J#: 803-796-8925

LOYALTY PLUS NO.

RECEIVED BY	CONTRACT NO.
WHITE, DAVID	6622414
PURCHASE ORDER NO.	
LJ55356	
JOB NO.	
1 - LABORDORE	
BRANCH	
017 TAMPA	
8406 DR MARTIN LUTHER KING BL	
TAMPA, FL 33610	
813-664-8581	

QTY	EQUIPMENT #	Min	Day	Week	4 Week	Amount
1	PAINT SPRAYER EL .6 GPM S224505 Make: GRACO Model: ULTRAMAX 695 Ser #: BA4293	126.00	126.00	337.00	945.00	126.00
Billed from 6/08/06 thru 6/09/06						

SALES ITEMS:

Qty	Item number	Unit	Price	Amount
1	ENVIRONMENTAL ENVIRONMENTAL	EA	.940	.94
1	RENTAL PROTECTION PLAN	EA		15.12
FINAL BILL: 6/08/06 04:15 PM THRU 6/09/06 02:23 PM.				

106-0693-1862024

ID# 3876

RECEIVED
 JUN 14 2006
UTILITIES, INC.

SUB# _____
 SUB NAME _____
 RETIREMENT INFO _____
 CROSS REF. INVOICES _____
 APPROVAL _____
 DATE RECEIVED **RECEIVED JUN 14 2006**

All Your Equipment Needs...
One Company.

NET DUE UPON RECEIPT

RENTAL RETURN

SUBTOTAL	142.06
SALES TAX	8.89
INVOICE TOTAL	150.95

022434

22434

28

ENTERED
JUL 19 2006

BIO TECH, INC ENVIRONMENTAL SV
P.O. BOX 4569

WEST COLUMBIA, SC 29171
Phone: 803-796-8925

W/16900

INVOICE

DATE	INVOICE #	CUST #
6/27/2006	0000055356	0000158

RECEIVED

JUN 30 2006

BILL TO:

UTILITIES, INC OF FLORIDA
200 WEATHERSFIELD AVENUE
ALTAMONTE SPRINGS, FL 32714

SHIP TO:

UTILITIES, INC OF FLORIDA
LABRADOR WATER TANK
TAMPA, FL

UTILITIES, INC.

P.O. NUMBER	TERMS	SALES PERSON	
	NET 30		
QUAN	DESCRIPTION	PRICE EACH	AMOUNT
1.00	6/5-6/9/2006&6/19-6/224/2006-Sandblasted tank inside and out. Cut off old roof and installed a new prefabed roof with handrails. Bid Job	41024.58	41024.58
<p>106-0613-1862026</p> <p>ID# 3876</p>			
		SUBTOTAL	\$41024.58
		TOTAL	\$41024.58

2
\$41024.58
W

026625

26626

ENTERED
SEP 01 2006

THOMPSON ELECTRIC COMPANY

P.O. BOX 1478 WINTER PARK, FLORIDA 32790

Office Address:
2530 MIKLER ROAD
OVIEDO, FLORIDA 32765

Phone: 407-365-6666
Fax: 407-365-9358
bill.bahler@thompstonelectfl.com

V09141

Aug. 3, 2006

Your Order #:

Our Order #: 06-131

To: Utilities, Inc. of Florida
200 Weathersfield Avenue
Altamonte Springs, Florida 32714

Re: Labrador WTP
Ground Storage Tank Electrical By-Pass

Attn: Tony Wierzbicki

Units	Articles	Each	Amount
Furnished labor and material for the following electrical By-Pass			
1	Install temporary By-Pass control panel for control of one well and one high service pump.		
2	Install temporary By-Pass mercoird pressure switches.		
3	Install temporary pressure piping for mercoird pressure switches.		
4	Install temporary electrical power cords for control of high service pump.		
5	Furnish non-mercury float switches to replace existing floats.		
6	Testing and change-over to temporary controls.		
7	Re-connection of existing controls.		
	Amount of Labor	\$2,795.00	
	Amount of Material	\$2,233.00	
	Total Amount	\$5,028.00	
	Amount Due		\$5,028.00

RECEIVED
AUG 07 2006
UTILITIES, INC.

100-0013-18620510

FD# 3876

EA