



Aqua Utilities Florida, Inc.
2228 Capital Circle NE, Ste. 2A
Tallahassee, FL 32308

RECEIVED-FPSC

10 OCT 11 PM 3:16

COMMISSION
CLERK

October 11, 2010

Ms. Ann Cole, Director
Commission Clerk
Florida Public Service Commission
2540 Shumard Oak Boulevard
Betty Easley Conference Center, Room 110
Tallahassee, FL 32399-0850

In Re: Application for increase in water and wastewater rates in Alachua, Brevard, DeSoto, Highlands, Lake, Lee, Marion, Orange, Palm Beach, Pasco, Polk, Putnam, Seminole, Sumter, Volusia, and Washington Counties by Aqua Utilities Florida, Inc., Docket No. 080121-WS - Phase II Monitoring Report

Dear Ms. Cole:

In accordance with Order No. PSC-10-0297-PAA-WS in Docket No. 080121-WS, enclosed are the original and eight (8) of the following reports and summaries relative to the Aqua Utilities Florida, Inc. ("AUF") Phase II Monitoring Plan for the month of August, 2010:

1. Management Quality Performance Report – August 2010;
2. Florida Complaint Support Information Report – August 2010;
3. Florida Score Card – August 2010;
4. Call Center Monitoring Statistics - August 2010;
5. Call Quality Report – August 2010;
6. Estimated Read Report – August 2010;
7. Aged Service Orders Reports; and,
8. Quarterly Environmental Update for October 2010

COM	_____
APA	_____
ECR	7
GCL	1
RAD	_____
SSC	_____
ADM	_____
OPC	_____
CLK	_____

DOCUMENT NUMBER-DATE

08470 OCT 11 0

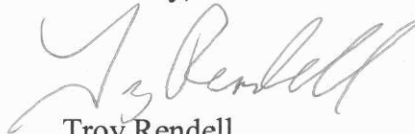
FPSC-COMMISSION CLERK

Although the order indicated that the quarterly environmental update was to be filed in July 2010 and September 2010, then at the end of year, this would not be quarterly reports. Since the last environmental report was filed in July 2010, the next one would have been due in October, and not September. Therefore, we have included a quarterly environmental update in this filing. The next quarterly update will therefore go through December 2010.

Please acknowledge receipt of this filing by stamping the extra copy of this letter “filed” and returning the copy to me. There is no need to return the attachments, just a copy of the cover letter.

Thank you for your assistance.

Sincerely,



Troy Rendell
Rates Manager

Enclosure

cc: Bruce May, Holland & Knight
Ralph Jaeger, Esq.
Earl Poucher
Charles Beck, Esq.
Cecilia Bradley, Esq.
Kimberly A. Joyce, Esq.

Aqua Utilities Florida Inc.
Docket No. 080121-WS
Florida Public Service Commission
Phase II Monitoring

Management Quality Performance Report
August 2010

DOCUMENT NUMBER-DATE
08470 OCT 11 2010
FPSC-COMMISSION CLERK

QUALITY PERFORMANCE REPORT

Florida Customers

Aug-10		Percent	Total Calls
1	Move In or Move Out	18%	1,028
2	Pay by Phone - Speedpay	15%	816
3	Verify Account Balance	10%	581
4	Customer Account Changes	7%	404
5	Shut-Off Notice	5%	305
6	Payment Arrangement	5%	288
7	Restore Service	5%	254
8	Payment Confirmation Number	4%	238
9	Explain Bill	4%	225
10	High Bill Complaint	4%	215
11	Verify Receipt of Payment	3%	155
12	Dispute Bill	1%	83
13	Service Line Leak	1%	82
14	Leak Adjustment	1%	79
15	No Water	1%	74
16	Turn On or Turn Off Service	1%	67
17	Payment Location Inquiry	1%	56
18	Zip Check Sign up	1%	48
19	Low Pressure	1%	41
20	Meter Problem	1%	41
	All Other Calls	9%	503
Total calls		100%	5,583

Aqua Utilities Florida Inc.

Docket No. 080121-WS

Florida Public Service Commission

Phase II Monitoring

Florida Scorecard – Operational Service Metrics

August 2010

Score Card -Customer Service - Aug		
	Target	Actual
Read Rate of Metered Accounts	99.00%	99.20%
% of cycles completed on scheduled date (+ or - 1 Day)	100.00%	100.00%
Overall Estimate Rate	0.80%	0.20%
Accounts Estimated>90 days	0.15%	0.10%
Percentage of Active Accounts Not Billed	0.06%	0.06%

Aqua Utilities Florida Inc.

Docket No. 080121-WS

Florida Public Service Commission

Phase II Monitoring

Florida Complaint Support Information Report

August 2010

Florida Customer Contacts

August 2010

System	CITY	CCS Reason	Total		
48 ESTATES	LEESBURG	DUPL BILL	1		
		EST BILL	1		
		NO BILL	1		
		TASTE_ODOR	1		
LEESBURG Total			4		
48 ESTATES Total			4		
ARREDONDO ESTATES	GAINESVILLE	HIGH BILL	1		
		LEAK ADJ	1		
		MISAP PYMT	1		
GAINESVILLE Total			3		
ARREDONDO ESTATES Total			3		
ARREDONDO FARMS	GAINESVILLE	BILL_DISP	4		
		DUPL BILL	2		
		LEAK ADJ	1		
		MAIN BRK	2		
		METER PROB	1		
		SERV LEAK	5		
		SEWER	4		
		SUPV CALLB	2		
		ZERO_USE	2		
		GAINESVILLE Total			23
ARREDONDO FARMS Total			23		
BEECHERS POINT	WELAKA	NO BILL	1		
		SERV LEAK	1		
WELAKA Total			2		
BEECHERS POINT Total			2		
BREEZE HILL	LAKE WALES	BILL_DISP	2		
		CURBBOX M	1		
		EST BILL	1		
		SEWER	1		
LAKE WALES Total			5		
BREEZE HILL Total			5		
CARLTON VILLAGE	LADY LAKE	HIGH BILL	2		
		LEAK ADJ	1		
		MISAP PYMT	1		
LADY LAKE Total			4		
CARLTON VILLAGE Total			4		
CHULUOTA	CHULUOTA	BILL CRCTN	1		
		BILL_DISP	6		
		COLLECTION	1		
		COLOR	1		
		HIGH BILL	15		
		LEAK ADJ	4		
		METER PROB	1		
		MISAP PYMT	3		
		NO BILL	1		
		NO WATER	1		
		PRESSURE	1		
		RATES	1		
		TASTE_ODOR	7		
		CHULUOTA Total			43
		OVIEDO	OVIEDO	BILL_DISP	1
				CLAIMS	1
				DUPL BILL	1
HIGH BILL	6				
METER PROB	1				
NO BILL	1				
OTHER WT Q	2				
SERV LEAK	1				
OVIEDO Total			15		
JACKSONVILLE	JACKSONVILLE	DUPL BILL	1		
JACKSONVILLE Total			1		
CHULUOTA Total			59		

Florida Customer Contacts August 2010

System	CITY	CCS Reason	Total
FAIRWAYS @ MT. PLYMOUTH	SORRENTO	BILL CRCTN	1
		HIGH BILL	2
		LOST PYMT	1
		MISAP PYMT	1
		PRESSURE	2
		TASTE ODOR	2
		SORRENTO Total	9
FAIRWAYS @ MT. PLYMOUTH Total		9	
FERN TERRACE	LEESBURG	CURBBOX M	2
		HIGH BILL	3
		MISAP PYMT	1
		LEESBURG Total	6
FERN TERRACE Total		6	
FRIENDLY CENTER	ASTATULA	BILL DISP	1
		NO WATER	2
		ASTATULA Total	3
FRIENDLY CENTER Total		3	
GIBSONIA ESTATES	LAKELAND	BILL DISP	1
		COLLECTION	1
		HIGH BILL	3
		LOST PYMT	1
		METER PROB	1
		MISAP PYMT	1
		LAKELAND Total	8
GIBSONIA ESTATES Total		8	
GRAND TERRACE	GRAND ISLAND	MISAP PYMT	1
		PRESSURE	2
		GRAND ISLAND Total	3
GRAND TERRACE Total		3	
HAINES CREEK	LEESBURG	HIGH BILL	1
		METER PROB	1
		SUPV CALLB	1
		LEESBURG Total	3
HAINES CREEK Total		3	
HARMONY HOMES	ALTAMONTE SPRINGS	COLOR	1
		METER PROB	1
		NO WATER	1
		ALTAMONTE SPRINGS Total	3
HARMONY HOMES Total		3	
HERMITS COVE	SATSUMA	SERV LEAK	3
	SATSUMA Total		3
HERMITS COVE Total			3
HOBBY HILLS	LADY LAKE	HIGH BILL	1
		LEAK ADJ	1
		METER PROB	1
		LADY LAKE Total	3
HOBBY HILLS Total		3	
HOLIDAY HAVEN	ASTOR	BILL DISP	1
		CURBBOX M	2
		HIGH BILL	3
		LEAK ADJ	2
		METER PROB	1
		NO WATER	1
		ASTOR Total	10
HOLIDAY HAVEN Total		10	
IMPERIAL	TAVARES	HIGH BILL	3
		NO BILL	1
		TASTE ODOR	1
		TAVARES Total	5
IMPERIAL Total		5	
INTERLACHEN PARK	INTERLACHEN	BILL DISP	1
		NO WATER	1
		OTHER WT Q	1
		PRESSURE	1
		INTERLACHEN Total	4
INTERLACHEN PARK Total		4	

Florida Customer Contacts August 2010

System	CITY	CCS Reason	Total	
JASMINE LAKES	PORT RICHEY	BILL DISP	3	
		COLLECTION	1	
		CURBBOX M	2	
		DUPL BILL	1	
		HIGH BILL	14	
		METER PROB	1	
		OTHER WT Q	1	
		SERV LEAK	5	
		SEWER	1	
PORT RICHEY Total			29	
JASMINE LAKES Total			29	
JUNGLE DEN	ASTOR	EST BILL	1	
		NO BILL	1	
		ASTOR Total		2
JUNGLE DEN Total			2	
KINGS COVE	FRUITLAND PARK	CURBBOX M	1	
		HIGH BILL	3	
		SERV LEAK	3	
		FRUITLAND PARK Total		7
KINGS COVE Total			7	
KINGSWOOD	MIMS	BILL DISP	1	
		HIGH BILL	3	
		PRESSURE	1	
		MIMS Total		5
KINGSWOOD Total			5	
LAKE GIBSON ESTATES	LAKELAND	BILL DISP	2	
		COLOR	1	
		DUPL BILL	1	
		FINAL BILL	1	
		HIGH BILL	3	
		LEAK ADJ	2	
		NO BILL	3	
		SUPV CALLB	1	
		ZERO USE	2	
		LAKELAND Total		16
		LAKE GIBSON ESTATES Total		
LAKE JOSEPHINE	SEBRING	BILL DISP	1	
		COLLECTION	1	
		COLOR	1	
		HIGH BILL	11	
		LEAK ADJ	2	
		METER PROB	1	
		NO WATER	3	
		PRESSURE	8	
		SERV LEAK	2	
		SEBRING Total		30
		LAKE JOSEPHINE Total		
LAKE OSBORNE EST	LAKE WORTH	BILL DISP	2	
		CLAIMS	1	
		CURBBOX M	2	
		HIGH BILL	3	
		LEAK ADJ	3	
		METER PROB	3	
		MISAP PYMT	1	
		NO WATER	1	
		PRESSURE	2	
		SEWER	1	
		TASTE ODOR	1	
LAKE WORTH Total		20		
LAKE OSBORNE EST Total			20	

Florida Customer Contacts August 2010

System	CITY	CCS Reason	Total
LAKE SUZY	LAKE SUZY	BILL CRCTN	1
		BILL DISP	2
		DUPL BILL	1
		HIGH BILL	1
		LEAK ADJ	3
		OTHER WT Q	2
		SERV LEAK	1
		ZERO USE	2
		LAKE SUZY Total	13
LAKE SUZY Total	13		
LEISURE LAKES	LAKE PLACID	FINAL BILL	1
		LEAK ADJ	1
		METER PROB	1
		SERV LEAK	1
LAKE PLACID Total	4		
LEISURE LAKES Total	4		
MORNINGVIEW	LEESBURG	SERV LEAK	1
	LEESBURG Total	1	
MORNINGVIEW Total	1		
OAKWOOD	MIMS	BILL DISP	1
		CURBBOX M	1
		DUPL BILL	1
		HIGH BILL	4
		LEAK ADJ	1
		METER PROB	1
		SUPV CALLB	1
		MIMS Total	10
OAKWOOD Total	10		
OCALA OAKS	BELLEVIEW	HIGH BILL	2
		LEAK ADJ	1
		METER PROB	1
		OTHER WT Q	5
		SEWER	1
		SUPV CALLB	2
		BELLEVIEW Total	12
	OCALA	BILL CRCTN	1
		BILL DISP	3
		COLLECTION	2
		CURBBOX M	3
		EST BILL	1
		HIGH BILL	17
		LEAK ADJ	3
		METER EXCH	1
		METER PROB	3
		MISAP PYMT	1
		NO BILL	4
		NO WATER	5
		PRESSURE	1
SERV LEAK	3		
SUPV CALLB	1		
PENLTY ADJ	1		
OCALA Total	50		
SUMMERFIELD	SUMMERFIELD	BILL CRCTN	1
		BILL DISP	2
		CLAIMS	1
		COLLECTION	1
		HIGH BILL	1
		LEAK ADJ	2
		NO WATER	1
		PRESSURE	1
		SUPV CALLB	1
SUMMERFIELD Total	11		
OCALA OAKS Total	73		

Florida Customer Contacts August 2010

System	CITY	CCS Reason	Total
ORANGE HILL	WINTER HAVEN	BILL DISP	3
		COLOR	1
		CURBBOX M	1
		HIGH BILL	9
		LEAK ADJ	6
		LOST PYMT	1
		METER PROB	1
		NO WATER	1
		PRESSURE	1
		SERV LEAK	2
		TASTE ODOR	3
		PENLTY_ADJ	1
		WINTER HAVEN Total	
ORANGE HILL Total			30
PALM PORT	EAST PALATKA	BILL DISP	3
		HIGH BILL	3
		LEAK ADJ	2
EAST PALATKA Total			8
PALM PORT Total			8
PALM TERRACE	PORT RICHEY	BILL DISP	3
		COLLECTION	2
		HIGH BILL	7
		LEAK ADJ	1
		METER PROB	2
		MISAP PYMT	1
		NO WATER	3
		SERV LEAK	2
		SEWER	1
		SUPV CALLB	1
		TASTE ODOR	1
PORT RICHEY Total			24
PALM TERRACE Total			24
PEACE RIVER	WAUCHULA	BILL CRCTN	1
		CURBBOX M	1
		HIGH BILL	1
		LOST PYMT	1
		OTHER WT Q	1
		SEWER	1
WAUCHULA Total			6
PEACE RIVER Total			6
PICCIOLA ISLAND	FRUITLAND PARK	COLOR	1
		HIGH BILL	2
		MAIN BRK	3
		NO WATER	20
		OTHER WT Q	12
		PRESSURE	6
SERV LEAK	1		
FRUITLAND PARK Total			45
PICCIOLA ISLAND Total			45
PINE VALLEY	HOMOSASSA	BILL DISP	1
		HIGH BILL	1
		METER PROB	1
		SERV LEAK	1
HOMOSASSA Total			4
PINE VALLEY Total			4
PINEY WOODS	FRUITLAND PARK	COLOR	1
		HIGH BILL	1
FRUITLAND PARK Total			2
PINEY WOODS Total			2
POMONA PARK	POMONA PARK	DUPL BILL	1
		HIGH BILL	1
		LEAK ADJ	1
		NO BILL	1
		SERV LEAK	1
POMONA PARK Total			5
POMONA PARK Total			5

Florida Customer Contacts August 2010

System	CITY	CCS Reason	Total
RIVER GROVE	EAST PALATKA	BILL_DISP	1
		COLOR	1
		CURBBOX_M	1
		DUPL_BILL	2
	EAST PALATKA Total		5
RIVER GROVE Total			5
ROSALIE OAKS	LAKE WALES	TASTE_ODOR	1
	LAKE WALES Total		1
ROSALIE OAKS Total			1
SARATOGA HARBOUR	SATSUMA	LEAK_ADJ	2
		PRESSURE	1
	SATSUMA Total		3
SARATOGA HARBOUR Total			3
SEBRING LAKES	SEBRING	LEAK_ADJ	1
	SEBRING Total		1
SEBRING LAKES Total			1
SILVER LAKE ESTS	LEESBURG	BILL_CRCTN	2
		BILL_DISP	4
		COLOR	1
		CURBBOX_M	3
		HIGH_BILL	21
		LEAK_ADJ	1
		METER_EXCH	1
		METER_PROB	1
		MISAP_PYMT	3
		NO_BILL	1
		SERV_LEAK	7
		SUPV_CALLB	2
		ZERO_USE	4
		ZIPCK_PROB	2
	LEESBURG Total		53
SILVER LAKE ESTS Total			53
SILVER LAKE OAKS	PALATKA	DUPL_BILL	1
		NO_BILL	2
	PALATKA Total		3
SILVER LAKE OAKS Total			3
SKYCREST	FRUITLAND PARK	DUPL_BILL	1
		HIGH_BILL	3
		METER_PROB	2
		NO_WATER	1
		TASTE_ODOR	2
	FRUITLAND PARK Total		9
SKYCREST Total			9
ST JOHNS HIGHLANDS	SATSUMA	BILL_CRCTN	1
		BILL_DISP	1
		TASTE_ODOR	1
	SATSUMA Total		3
ST JOHNS HIGHLANDS Total			3
SUMMIT CHASE	TAVARES	BILL_CRCTN	1
		BILL_DISP	1
		HIGH_BILL	5
		LEAK_ADJ	2
		NO_WATER	1
		PRESSURE	1
		SERV_LEAK	2
	TAVARES Total		13
SUMMIT CHASE Total			13

Florida Customer Contacts August 2010

System	CITY	CCS Reason	Total	
SUNNY HILLS	CHIPLEY	BILL DISP	1	
		COLOR	2	
		CURBBOX M	1	
		DUPL BILL	2	
		HIGH BILL	6	
		METER PROB	1	
		MISAP PYMT	1	
		NO WATER	7	
		PRESSURE	3	
		SERV LEAK	2	
	SEWER	1		
	CHIPLEY Total		27	
	SUNNY HILLS		DUPL BILL	1
			HIGH BILL	2
			NO WATER	4
PRESSURE			1	
SUNNY HILLS Total		2		
SUNNY HILLS Total		37		
TANGERINE	MOUNT DORA	BILL CRCTN	1	
		HIGH BILL	1	
		MISAP PYMT	1	
		SERV LEAK	1	
	MOUNT DORA Total		4	
	TANGERINE		CLAIMS	1
			CURBBOX M	1
			HIGH BILL	1
			LEAK ADJ	2
			MISAP PYMT	1
TANGERINE Total		7		
TANGERINE Total		11		
THE MEADOWS	HOMOSASSA	LEAK ADJ	1	
	HOMOSASSA Total		1	
	HOMOSASSA SPRINGS	SERV LEAK	1	
	HOMOSASSA SPRINGS Total		1	
THE MEADOWS Total		2		
THE WOODS	WEBSTER	EST BILL	1	
		NO WATER	1	
		SERV LEAK	2	
	WEBSTER Total		4	
THE WOODS Total		4		
TOMOKA	ORMOND BEACH	BILL DISP	1	
		COLOR	4	
		HIGH BILL	5	
		LEAK ADJ	5	
		TASTE ODOR	1	
	ORMOND BEACH Total		16	
TOMOKA Total		16		
VALENCIA TERRACE	FRUITLAND PARK	BILL DISP	1	
		HIGH BILL	4	
		LEAK ADJ	2	
		METER PROB	2	
	FRUITLAND PARK Total		9	
VALENCIA TERRACE Total		9		
VENETIAN VILLAGE	TAVARES	CURBBOX M	2	
	TAVARES Total	SEWER	1	
			3	
VENETIAN VILLAGE Total		3		
VILLAGE WATER	LAKELAND	HIGH BILL	1	
		NO BILL	1	
		NO WATER	6	
		OTHER WT Q	2	
		PRESSURE	1	
	SERV LEAK	3		
LAKELAND Total		14		
VILLAGE WATER Total		14		

Florida Customer Contacts August 2010

System	CITY	CCS Reason	Total
ZEPHYR SHORES	ZEPHYRHILLS	HIGH BILL	1
		LEAK ADJ	1
		NO BILL	1
		SUPV CALLB	1
		TASTE ODOR	1
		ZIPCK PROB	1
		ZEPHYRHILLS Total	6
ZEPHYR SHORES Total	6		
Grand Total	687		

Aqua Utilities Florida Inc.

Docket No. 080121-WS

Florida Public Service Commission

Phase II Monitoring

Call Center Monitoring Statistics

August 2010

Call Center Statistics	June-10	July-10	August-10	EXPLANATION OF STATISTICS
States	PA,NC,VA,TX,FL,OH,NJ, IL,MO,IN,NY*	PA,NC,VA,TX,FL,OH,NJ, IL,MO,IN,NY*	PA,NC,VA,TX,FL,OH,NJ, IL,MO,IN,NY*	Refers to states where Aqua customers are serviced by call centers
Customers (approx.)	893,261	893,261	893,261	Refers to the approximate number of customers being serviced by the call centers
Total Calls	95,841	91,194	95,975	The number of total calls that were received through the toll-free number that went into a service queue (does not include customers who used self-serve options)
Days Open	22	21	22	Days in month that call centers were open for business
Average Calls/Day	4,356	4,343	4,363	Calculated by dividing Total Calls by Days Open
Abandon Rate	5.4%	5.6%	2.9%	Percentage of Total Calls where customers disconnected (abandoned) prior to a CSR answering.
Calls Answered in < 90 seconds	74%	73%	86%	Percentage of calls where a CSR answered in 90 seconds or less
Average Speed to Answer	57 sec	61 sec	32 sec	The average time in seconds that a customer waited before their call was answered by a CSR.
Average Handle Time	4:35	4:39	4:34	The average for all answered calls of total talk time plus total hold time plus any time for after call work completed by the CSR
Average #CSR/Day	63.5	62.7	64.7	The average number of CSRs who logged in each day during the stated month
Calls Answered	90,666	86,087	93,192	Total Calls less abandoned calls

Aqua Utilities Florida Inc.

Docket No. 080121-WS

Florida Public Service Commission

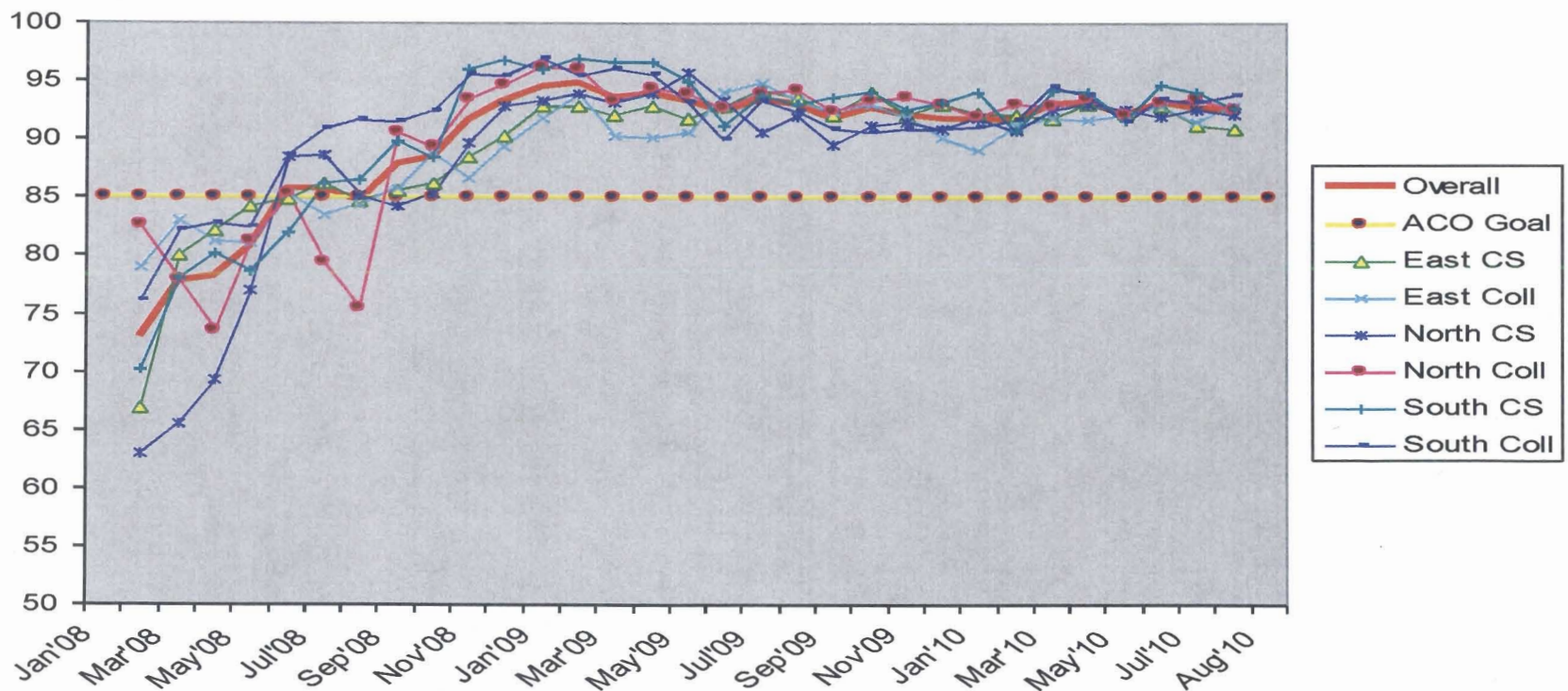
Phase II Monitoring

Call Quality Report

August 2010

CSR Call Quality Scores

Good



Aqua Utilities Florida Inc.

Docket No. 080121-WS

Florida Public Service Commission

Phase II Monitoring

Aged Service Orders Reports

August 2010

Aqua America Aged Service Orders*
FL - All Florida
Status: O - Needs to be Worked in the Field
Run Date: 8/6/2010

Service Order Type	Service Order Description	1-7	8-14	15-21	22-28	29-60	61-90	91-120	121-200	201-300	301-400	>400	TOTAL
BENN	BENCH TEST	0	0	0	0	0	0	0	0	0	0	0	0
CURB	CURB BOX MAINTENANCE - MISCELLANEOUS	0	0	0	0	0	0	0	0	0	0	0	0
HIC	HIGH CONSUMPTION	2	0	0	0	0	0	0	0	0	0	0	2
LABC	LAB - CHEMICAL CONTENT	0	0	0	0	0	0	0	0	0	0	0	0
LABD	LAB - DISCOLORED WATER	0	0	0	0	0	0	0	0	0	0	0	0
LABT	LAB - TASTE & ODOR	0	0	0	0	0	0	0	0	0	0	0	0
MSMT	MISCELLANEOUS MAINTENANCE	1	0	0	0	0	0	0	0	0	0	0	1
PRES	PRESSURE - DISTRIBUTION	3	0	0	0	0	0	0	0	0	0	0	3
REPR	REPAIR/INVESTIGATION	7	0	0	0	0	0	0	0	0	0	0	7
RMTR	READ METER SERVICES	0	0	0	0	0	0	0	0	0	0	0	0
RPST	REPAIR STREET	0	0	0	0	0	0	0	0	0	0	0	0
RRMT	RE-READ METER	0	0	0	0	0	0	0	0	0	0	0	0
SLM	SEWER LATERAL MAIN	0	0	0	0	0	0	0	0	0	0	0	0
SVLK	SERVICE LEAK	0	0	0	0	0	0	0	0	0	0	0	0
TOFF	TURN WATER OFF	0	0	0	0	0	0	0	0	0	0	0	0
TONN	TURN WATER ON	0	0	0	0	0	0	0	0	0	0	0	0
Totals		13	0	0	0	0	0	0	0	0	0	0	13

*Designated Types

Aqua America Aged Service Orders*
84 - Leesburg
Status: O - Needs to be Worked in the Field
Run Date: 8/6/2010

Service Order Type	Service Order Description	1-7	8-14	15-21	22-28	29-60	61-90	91-120	121-200	201-300	301-400	>400	TOTAL
BENN	BENCH TEST	0	0	0	0	0	0	0	0	0	0	0	0
CURB	CURB BOX MAINTENANCE - MISCELLANEOUS	0	0	0	0	0	0	0	0	0	0	0	0
HIC	HIGH CONSUMPTION	1	0	0	0	0	0	0	0	0	0	0	1
LABC	LAB - CHEMICAL CONTENT	0	0	0	0	0	0	0	0	0	0	0	0
LABD	LAB - DISCOLORED WATER	0	0	0	0	0	0	0	0	0	0	0	0
LABT	LAB - TASTE & ODOR	0	0	0	0	0	0	0	0	0	0	0	0
MSMT	MISCELLANEOUS MAINTENANCE	0	0	0	0	0	0	0	0	0	0	0	0
PRES	PRESSURE - DISTRIBUTION	3	0	0	0	0	0	0	0	0	0	0	3
REPR	REPAIR/INVESTIGATION	4	0	0	0	0	0	0	0	0	0	0	4
RMTR	READ METER SERVICES	0	0	0	0	0	0	0	0	0	0	0	0
RPST	REPAIR STREET	0	0	0	0	0	0	0	0	0	0	0	0
RRMT	RE-READ METER	0	0	0	0	0	0	0	0	0	0	0	0
SLM	SEWER LATERAL MAIN	0	0	0	0	0	0	0	0	0	0	0	0
SVLK	SERVICE LEAK	0	0	0	0	0	0	0	0	0	0	0	0
TOFF	TURN WATER OFF	0	0	0	0	0	0	0	0	0	0	0	0
TONN	TURN WATER ON	0	0	0	0	0	0	0	0	0	0	0	0
Totals		8	0	0	0	0	0	0	0	0	0	0	8

*Designated Types

Aqua America Aged Service Orders*
85 - Lake Suzy
Status: O - Needs to be Worked in the Field
Run Date: 8/6/2010

Service Order Type	Service Order Description	1-7	8-14	15-21	22-28	29-60	61-90	91-120	121-200	201-300	301-400	>400	TOTAL
BENN	BENCH TEST	0	0	0	0	0	0	0	0	0	0	0	0
CURB	CURB BOX MAINTENANCE - MISCELLANEOUS	0	0	0	0	0	0	0	0	0	0	0	0
HIC	HIGH CONSUMPTION	0	0	0	0	0	0	0	0	0	0	0	0
LABC	LAB - CHEMICAL CONTENT	0	0	0	0	0	0	0	0	0	0	0	0
LABD	LAB - DISCOLORED WATER	0	0	0	0	0	0	0	0	0	0	0	0
LABT	LAB - TASTE & ODOR	0	0	0	0	0	0	0	0	0	0	0	0
MSMT	MISCELLANEOUS MAINTENANCE	0	0	0	0	0	0	0	0	0	0	0	0
PRES	PRESSURE - DISTRIBUTION	0	0	0	0	0	0	0	0	0	0	0	0
REPR	REPAIR/INVESTIGATION	0	0	0	0	0	0	0	0	0	0	0	0
RMTR	READ METER SERVICES	0	0	0	0	0	0	0	0	0	0	0	0
RPST	REPAIR STREET	0	0	0	0	0	0	0	0	0	0	0	0
RRMT	RE-READ METER	0	0	0	0	0	0	0	0	0	0	0	0
SLM	SEWER LATERAL MAIN	0	0	0	0	0	0	0	0	0	0	0	0
SVLK	SERVICE LEAK	0	0	0	0	0	0	0	0	0	0	0	0
TOFF	TURN WATER OFF	0	0	0	0	0	0	0	0	0	0	0	0
TONN	TURN WATER ON	0	0	0	0	0	0	0	0	0	0	0	0
Totals		0	0	0	0	0	0	0	0	0	0	0	0

*Designated Types

Aqua America Aged Service Orders*
86 - Putnam
Status: O - Needs to be Worked in the Field
Run Date: 8/6/2010

Service Order Type	Service Order Description	1-7	8-14	15-21	22-28	29-60	61-90	91-120	121-200	201-300	301-400	>400	TOTAL
BENN	BENCH TEST	0	0	0	0	0	0	0	0	0	0	0	0
CURB	CURB BOX MAINTENANCE - MISCELLANEOUS	0	0	0	0	0	0	0	0	0	0	0	0
HIC	HIGH CONSUMPTION	0	0	0	0	0	0	0	0	0	0	0	0
LABC	LAB - CHEMICAL CONTENT	0	0	0	0	0	0	0	0	0	0	0	0
LABD	LAB - DISCOLORED WATER	0	0	0	0	0	0	0	0	0	0	0	0
LABT	LAB - TASTE & ODOR	0	0	0	0	0	0	0	0	0	0	0	0
MSMT	MISCELLANEOUS MAINTENANCE	0	0	0	0	0	0	0	0	0	0	0	0
PRES	PRESSURE - DISTRIBUTION	0	0	0	0	0	0	0	0	0	0	0	0
REPR	REPAIR/INVESTIGATION	0	0	0	0	0	0	0	0	0	0	0	0
RMTR	READ METER SERVICES	0	0	0	0	0	0	0	0	0	0	0	0
RPST	REPAIR STREET	0	0	0	0	0	0	0	0	0	0	0	0
RRMT	RE-READ METER	0	0	0	0	0	0	0	0	0	0	0	0
SLM	SEWER LATERAL MAIN	0	0	0	0	0	0	0	0	0	0	0	0
SVLK	SERVICE LEAK	0	0	0	0	0	0	0	0	0	0	0	0
TOFF	TURN WATER OFF	0	0	0	0	0	0	0	0	0	0	0	0
TONN	TURN WATER ON	0	0	0	0	0	0	0	0	0	0	0	0
Totals		0	0	0	0	0	0	0	0	0	0	0	0

*Designated Types

Aqua America Aged Service Orders*
87 - Lake Gibson
Status: O - Needs to be Worked in the Field
Run Date: 8/6/2010

Service Order Type	Service Order Description	1-7	8-14	15-21	22-28	29-60	61-90	91-120	121-200	201-300	301-400	>400	TOTAL
BENN	BENCH TEST	0	0	0	0	0	0	0	0	0	0	0	0
CURB	CURB BOX MAINTENANCE - MISCELLANEOUS	0	0	0	0	0	0	0	0	0	0	0	0
HIC	HIGH CONSUMPTION	0	0	0	0	0	0	0	0	0	0	0	0
LABC	LAB - CHEMICAL CONTENT	0	0	0	0	0	0	0	0	0	0	0	0
LABD	LAB - DISCOLORED WATER	0	0	0	0	0	0	0	0	0	0	0	0
LABT	LAB - TASTE & ODOR	0	0	0	0	0	0	0	0	0	0	0	0
MSMT	MISCELLANEOUS MAINTENANCE	1	0	0	0	0	0	0	0	0	0	0	1
PRES	PRESSURE - DISTRIBUTION	0	0	0	0	0	0	0	0	0	0	0	0
REPR	REPAIR/INVESTIGATION	3	0	0	0	0	0	0	0	0	0	0	3
RMTR	READ METER SERVICES	0	0	0	0	0	0	0	0	0	0	0	0
RPST	REPAIR STREET	0	0	0	0	0	0	0	0	0	0	0	0
RRMT	RE-READ METER	0	0	0	0	0	0	0	0	0	0	0	0
SLM	SEWER LATERAL MAIN	0	0	0	0	0	0	0	0	0	0	0	0
SVLK	SERVICE LEAK	0	0	0	0	0	0	0	0	0	0	0	0
TOFF	TURN WATER OFF	0	0	0	0	0	0	0	0	0	0	0	0
TONN	TURN WATER ON	0	0	0	0	0	0	0	0	0	0	0	0
Totals		4	0	0	0	0	0	0	0	0	0	0	4

*Designated Types

Aqua America Aged Service Orders*
89 - Seminole/FL Comm
Status: O - Needs to be Worked in the Field
Run Date: 8/6/2010

Service Order Type	Service Order Description	1-7	8-14	15-21	22-28	29-60	61-90	91-120	121-200	201-300	301-400	>400	TOTAL
BENN	BENCH TEST	0	0	0	0	0	0	0	0	0	0	0	0
CURB	CURB BOX MAINTENANCE - MISCELLANEOUS	0	0	0	0	0	0	0	0	0	0	0	0
HIC	HIGH CONSUMPTION	0	0	0	0	0	0	0	0	0	0	0	0
LABC	LAB - CHEMICAL CONTENT	0	0	0	0	0	0	0	0	0	0	0	0
LABD	LAB - DISCOLORED WATER	0	0	0	0	0	0	0	0	0	0	0	0
LABT	LAB - TASTE & ODOR	0	0	0	0	0	0	0	0	0	0	0	0
MSMT	MISCELLANEOUS MAINTENANCE	0	0	0	0	0	0	0	0	0	0	0	0
PRES	PRESSURE - DISTRIBUTION	0	0	0	0	0	0	0	0	0	0	0	0
REPR	REPAIR/INVESTIGATION	0	0	0	0	0	0	0	0	0	0	0	0
RMTR	READ METER SERVICES	0	0	0	0	0	0	0	0	0	0	0	0
RPST	REPAIR STREET	0	0	0	0	0	0	0	0	0	0	0	0
RRMT	RE-READ METER	0	0	0	0	0	0	0	0	0	0	0	0
SLM	SEWER LATERAL MAIN	0	0	0	0	0	0	0	0	0	0	0	0
SVLK	SERVICE LEAK	0	0	0	0	0	0	0	0	0	0	0	0
TOFF	TURN WATER OFF	0	0	0	0	0	0	0	0	0	0	0	0
TONN	TURN WATER ON	0	0	0	0	0	0	0	0	0	0	0	0
Totals		0	0	0	0	0	0	0	0	0	0	0	0

*Designated Types

Aqua America Aged Service Orders*
90 - Ocala
Status: O - Needs to be Worked in the Field
Run Date: 8/6/2010

Service Order Type	Service Order Description	1-7	8-14	15-21	22-28	29-60	61-90	91-120	121-200	201-300	301-400	>400	TOTAL
BENN	BENCH TEST	0	0	0	0	0	0	0	0	0	0	0	0
CURB	CURB BOX MAINTENANCE - MISCELLANEOUS	0	0	0	0	0	0	0	0	0	0	0	0
HIC	HIGH CONSUMPTION	0	0	0	0	0	0	0	0	0	0	0	0
LABC	LAB - CHEMICAL CONTENT	0	0	0	0	0	0	0	0	0	0	0	0
LABD	LAB - DISCOLORED WATER	0	0	0	0	0	0	0	0	0	0	0	0
LABT	LAB - TASTE & ODOR	0	0	0	0	0	0	0	0	0	0	0	0
MSMT	MISCELLANEOUS MAINTENANCE	0	0	0	0	0	0	0	0	0	0	0	0
PRES	PRESSURE - DISTRIBUTION	0	0	0	0	0	0	0	0	0	0	0	0
REPR	REPAIR/INVESTIGATION	0	0	0	0	0	0	0	0	0	0	0	0
RMTR	READ METER SERVICES	0	0	0	0	0	0	0	0	0	0	0	0
RPST	REPAIR STREET	0	0	0	0	0	0	0	0	0	0	0	0
RRMT	RE-READ METER	0	0	0	0	0	0	0	0	0	0	0	0
SLM	SEWER LATERAL MAIN	0	0	0	0	0	0	0	0	0	0	0	0
SVLK	SERVICE LEAK	0	0	0	0	0	0	0	0	0	0	0	0
TOFF	TURN WATER OFF	0	0	0	0	0	0	0	0	0	0	0	0
TONN	TURN WATER ON	0	0	0	0	0	0	0	0	0	0	0	0
Totals		0	0	0	0	0	0	0	0	0	0	0	0

*Designated Types

Aqua America Aged Service Orders*
91 - Palm Beach
Status: O - Needs to be Worked in the Field
Run Date: 8/6/2010

Service Order Type	Service Order Description	1-7	8-14	15-21	22-28	29-60	61-90	91-120	121-200	201-300	301-400	>400	TOTAL
BENN	BENCH TEST	0	0	0	0	0	0	0	0	0	0	0	0
CURB	CURB BOX MAINTENANCE - MISCELLANEOUS	0	0	0	0	0	0	0	0	0	0	0	0
HIC	HIGH CONSUMPTION	0	0	0	0	0	0	0	0	0	0	0	0
LABC	LAB - CHEMICAL CONTENT	0	0	0	0	0	0	0	0	0	0	0	0
LABD	LAB - DISCOLORED WATER	0	0	0	0	0	0	0	0	0	0	0	0
LABT	LAB - TASTE & ODOR	0	0	0	0	0	0	0	0	0	0	0	0
MSMT	MISCELLANEOUS MAINTENANCE	0	0	0	0	0	0	0	0	0	0	0	0
PRES	PRESSURE - DISTRIBUTION	0	0	0	0	0	0	0	0	0	0	0	0
REPR	REPAIR/INVESTIGATION	0	0	0	0	0	0	0	0	0	0	0	0
RMTR	READ METER SERVICES	0	0	0	0	0	0	0	0	0	0	0	0
RPST	REPAIR STREET	0	0	0	0	0	0	0	0	0	0	0	0
RRMT	RE-READ METER	0	0	0	0	0	0	0	0	0	0	0	0
SLM	SEWER LATERAL MAIN	0	0	0	0	0	0	0	0	0	0	0	0
SVLK	SERVICE LEAK	0	0	0	0	0	0	0	0	0	0	0	0
TOFF	TURN WATER OFF	0	0	0	0	0	0	0	0	0	0	0	0
TONN	TURN WATER ON	0	0	0	0	0	0	0	0	0	0	0	0
Totals		0	0	0	0	0	0	0	0	0	0	0	0

*Designated Types

Aqua America Aged Service Orders*
92 - South Seas
Status: O - Needs to be Worked in the Field
Run Date: 8/6/2010

Service Order Type	Service Order Description	1-7	8-14	15-21	22-28	29-60	61-90	91-120	121-200	201-300	301-400	>400	TOTAL
BENN	BENCH TEST	0	0	0	0	0	0	0	0	0	0	0	0
CURB	CURB BOX MAINTENANCE - MISCELLANEOUS	0	0	0	0	0	0	0	0	0	0	0	0
HIC	HIGH CONSUMPTION	0	0	0	0	0	0	0	0	0	0	0	0
LABC	LAB - CHEMICAL CONTENT	0	0	0	0	0	0	0	0	0	0	0	0
LABD	LAB - DISCOLORED WATER	0	0	0	0	0	0	0	0	0	0	0	0
LABT	LAB - TASTE & ODOR	0	0	0	0	0	0	0	0	0	0	0	0
MSMT	MISCELLANEOUS MAINTENANCE	0	0	0	0	0	0	0	0	0	0	0	0
PRES	PRESSURE - DISTRIBUTION	0	0	0	0	0	0	0	0	0	0	0	0
REPR	REPAIR/INVESTIGATION	0	0	0	0	0	0	0	0	0	0	0	0
RMTR	READ METER SERVICES	0	0	0	0	0	0	0	0	0	0	0	0
RPST	REPAIR STREET	0	0	0	0	0	0	0	0	0	0	0	0
RRMT	RE-READ METER	0	0	0	0	0	0	0	0	0	0	0	0
SLM	SEWER LATERAL MAIN	0	0	0	0	0	0	0	0	0	0	0	0
SVLK	SERVICE LEAK	0	0	0	0	0	0	0	0	0	0	0	0
TOFF	TURN WATER OFF	0	0	0	0	0	0	0	0	0	0	0	0
TONN	TURN WATER ON	0	0	0	0	0	0	0	0	0	0	0	0
Totals		0	0	0	0	0	0	0	0	0	0	0	0

*Designated Types

Aqua America Aged Service Orders*
93 - Sunny Hills/Washington
Status: O - Needs to be Worked in the Field
Run Date: 8/6/2010

Service Order Type	Service Order Description	1-7	8-14	15-21	22-28	29-60	61-90	91-120	121-200	201-300	301-400	>400	TOTAL
BENN	BENCH TEST	0	0	0	0	0	0	0	0	0	0	0	0
CURB	CURB BOX MAINTENANCE - MISCELLANEOUS	0	0	0	0	0	0	0	0	0	0	0	0
HIC	HIGH CONSUMPTION	0	0	0	0	0	0	0	0	0	0	0	0
LABC	LAB - CHEMICAL CONTENT	0	0	0	0	0	0	0	0	0	0	0	0
LABD	LAB - DISCOLORED WATER	0	0	0	0	0	0	0	0	0	0	0	0
LABT	LAB - TASTE & ODOR	0	0	0	0	0	0	0	0	0	0	0	0
MSMT	MISCELLANEOUS MAINTENANCE	0	0	0	0	0	0	0	0	0	0	0	0
PRES	PRESSURE - DISTRIBUTION	0	0	0	0	0	0	0	0	0	0	0	0
REPR	REPAIR/INVESTIGATION	0	0	0	0	0	0	0	0	0	0	0	0
RMTR	READ METER SERVICES	0	0	0	0	0	0	0	0	0	0	0	0
RPST	REPAIR STREET	0	0	0	0	0	0	0	0	0	0	0	0
RRMT	RE-READ METER	0	0	0	0	0	0	0	0	0	0	0	0
SLM	SEWER LATERAL MAIN	0	0	0	0	0	0	0	0	0	0	0	0
SVLK	SERVICE LEAK	0	0	0	0	0	0	0	0	0	0	0	0
TOFF	TURN WATER OFF	0	0	0	0	0	0	0	0	0	0	0	0
TONN	TURN WATER ON	0	0	0	0	0	0	0	0	0	0	0	0
Totals		0	0	0	0	0	0	0	0	0	0	0	0

*Designated Types

Aqua America Aged Service Orders*
94 - Palm Terrace
Status: O - Needs to be Worked in the Field
Run Date: 8/6/2010

Service Order Type	Service Order Description	1-7	8-14	15-21	22-28	29-60	61-90	91-120	121-200	201-300	301-400	>400	TOTAL
BENN	BENCH TEST	0	0	0	0	0	0	0	0	0	0	0	0
CURB	CURB BOX MAINTENANCE - MISCELLANEOUS	0	0	0	0	0	0	0	0	0	0	0	0
HIC	HIGH CONSUMPTION	1	0	0	0	0	0	0	0	0	0	0	1
LABC	LAB - CHEMICAL CONTENT	0	0	0	0	0	0	0	0	0	0	0	0
LABD	LAB - DISCOLORED WATER	0	0	0	0	0	0	0	0	0	0	0	0
LABT	LAB - TASTE & ODOR	0	0	0	0	0	0	0	0	0	0	0	0
MSMT	MISCELLANEOUS MAINTENANCE	0	0	0	0	0	0	0	0	0	0	0	0
PRES	PRESSURE - DISTRIBUTION	0	0	0	0	0	0	0	0	0	0	0	0
REPR	REPAIR/INVESTIGATION	0	0	0	0	0	0	0	0	0	0	0	0
RMTR	READ METER SERVICES	0	0	0	0	0	0	0	0	0	0	0	0
RPST	REPAIR STREET	0	0	0	0	0	0	0	0	0	0	0	0
RRMT	RE-READ METER	0	0	0	0	0	0	0	0	0	0	0	0
SLM	SEWER LATERAL MAIN	0	0	0	0	0	0	0	0	0	0	0	0
SVLK	SERVICE LEAK	0	0	0	0	0	0	0	0	0	0	0	0
TOFF	TURN WATER OFF	0	0	0	0	0	0	0	0	0	0	0	0
TONN	TURN WATER ON	0	0	0	0	0	0	0	0	0	0	0	0
Totals		1	0	0	0	0	0	0	0	0	0	0	1

*Designated Types

Aqua America Aged Service Orders*
95 - Sebring
Status: O - Needs to be Worked in the Field
Run Date: 8/6/2010

Service Order Type	Service Order Description	1-7	8-14	15-21	22-28	29-60	61-90	91-120	121-200	201-300	301-400	>400	TOTAL
BENN	BENCH TEST	0	0	0	0	0	0	0	0	0	0	0	0
CURB	CURB BOX MAINTENANCE - MISCELLANEOUS	0	0	0	0	0	0	0	0	0	0	0	0
HIC	HIGH CONSUMPTION	0	0	0	0	0	0	0	0	0	0	0	0
LABC	LAB - CHEMICAL CONTENT	0	0	0	0	0	0	0	0	0	0	0	0
LABD	LAB - DISCOLORED WATER	0	0	0	0	0	0	0	0	0	0	0	0
LABT	LAB - TASTE & ODOR	0	0	0	0	0	0	0	0	0	0	0	0
MSMT	MISCELLANEOUS MAINTENANCE	0	0	0	0	0	0	0	0	0	0	0	0
PRES	PRESSURE - DISTRIBUTION	0	0	0	0	0	0	0	0	0	0	0	0
REPR	REPAIR/INVESTIGATION	0	0	0	0	0	0	0	0	0	0	0	0
RMTR	READ METER SERVICES	0	0	0	0	0	0	0	0	0	0	0	0
RPST	REPAIR STREET	0	0	0	0	0	0	0	0	0	0	0	0
RRMT	RE-READ METER	0	0	0	0	0	0	0	0	0	0	0	0
SLM	SEWER LATERAL MAIN	0	0	0	0	0	0	0	0	0	0	0	0
SVLK	SERVICE LEAK	0	0	0	0	0	0	0	0	0	0	0	0
TOFF	TURN WATER OFF	0	0	0	0	0	0	0	0	0	0	0	0
TONN	TURN WATER ON	0	0	0	0	0	0	0	0	0	0	0	0
Totals		0	0	0	0	0	0	0	0	0	0	0	0

*Designated Types

Aqua America Aged Service Orders*
NO - No Orders
Status: O - Needs to be Worked in the Field
Run Date: 8/6/2010

Service Order Type	Service Order Description	1-7	8-14	15-21	22-28	29-60	61-90	91-120	121-200	201-300	301-400	>400	TOTAL
BENN	BENCH TEST	0	0	0	0	0	0	0	0	0	0	0	0
CURB	CURB BOX MAINTENANCE - MISCELLANEOUS	0	0	0	0	0	0	0	0	0	0	0	0
HIC	HIGH CONSUMPTION	0	0	0	0	0	0	0	0	0	0	0	0
LABC	LAB - CHEMICAL CONTENT	0	0	0	0	0	0	0	0	0	0	0	0
LABD	LAB - DISCOLORED WATER	0	0	0	0	0	0	0	0	0	0	0	0
LABT	LAB - TASTE & ODOR	0	0	0	0	0	0	0	0	0	0	0	0
MSMT	MISCELLANEOUS MAINTENANCE	0	0	0	0	0	0	0	0	0	0	0	0
PRES	PRESSURE - DISTRIBUTION	0	0	0	0	0	0	0	0	0	0	0	0
REPR	REPAIR/INVESTIGATION	0	0	0	0	0	0	0	0	0	0	0	0
RMTR	READ METER SERVICES	0	0	0	0	0	0	0	0	0	0	0	0
RPST	REPAIR STREET	0	0	0	0	0	0	0	0	0	0	0	0
RRMT	RE-READ METER	0	0	0	0	0	0	0	0	0	0	0	0
SLM	SEWER LATERAL MAIN	0	0	0	0	0	0	0	0	0	0	0	0
SVLK	SERVICE LEAK	0	0	0	0	0	0	0	0	0	0	0	0
TOFF	TURN WATER OFF	0	0	0	0	0	0	0	0	0	0	0	0
TONN	TURN WATER ON	0	0	0	0	0	0	0	0	0	0	0	0
Totals		0	0	0	0	0	0	0	0	0	0	0	0

*Designated Types

Aqua America Aged Service Orders*
FL - All Florida
Status: O - Needs to be Worked in the Field
Run Date: 8/13/2010

Service Order Type	Service Order Description	1-7	8-14	15-21	22-28	29-60	61-90	91-120	121-200	201-300	301-400	>400	TOTAL
BENN	BENCH TEST	0	0	0	0	0	0	0	0	0	0	0	0
CURB	CURB BOX MAINTENANCE - MISCELLANEOUS	0	0	0	0	0	0	0	0	0	0	0	0
HIC	HIGH CONSUMPTION	1	0	0	0	0	0	0	0	0	0	0	1
LABC	LAB - CHEMICAL CONTENT	1	0	0	0	0	0	0	0	0	0	0	1
LABD	LAB - DISCOLORED WATER	1	0	0	0	0	0	0	0	0	0	0	1
LABT	LAB - TASTE & ODOR	1	0	0	0	0	0	0	0	0	0	0	1
MSMT	MISCELLANEOUS MAINTENANCE	1	0	0	0	0	0	0	0	0	0	0	1
PRES	PRESSURE - DISTRIBUTION	1	0	0	0	0	0	0	0	0	0	0	1
REPR	REPAIR/INVESTIGATION	11	4	0	0	0	0	0	0	0	0	0	15
RMTR	READ METER SERVICES	0	0	0	0	0	0	0	0	0	0	0	0
RPST	REPAIR STREET	0	0	0	0	0	0	0	0	0	0	0	0
RRMT	RE-READ METER	0	0	0	0	0	0	0	0	0	0	0	0
SLM	SEWER LATERAL MAIN	1	0	0	0	0	0	0	0	0	0	0	1
SVLK	SERVICE LEAK	1	0	0	0	0	0	0	0	0	0	0	1
TOFF	TURN WATER OFF	0	0	0	0	0	0	0	0	0	0	0	0
TONN	TURN WATER ON	0	0	0	0	0	0	0	0	0	0	0	0
Totals		19	4	0	0	0	0	0	0	0	0	0	23

*Designated Types

Aqua America Aged Service Orders*
84 - Leesburg
Status: O - Needs to be Worked in the Field
Run Date: 8/13/2010

Service Order Type	Service Order Description	1-7	8-14	15-21	22-28	29-60	61-90	91-120	121-200	201-300	301-400	>400	TOTAL
BENN	BENCH TEST	0	0	0	0	0	0	0	0	0	0	0	0
CURB	CURB BOX MAINTENANCE - MISCELLANEOUS	0	0	0	0	0	0	0	0	0	0	0	0
HIC	HIGH CONSUMPTION	0	0	0	0	0	0	0	0	0	0	0	0
LABC	LAB - CHEMICAL CONTENT	0	0	0	0	0	0	0	0	0	0	0	0
LABD	LAB - DISCOLORED WATER	0	0	0	0	0	0	0	0	0	0	0	0
LABT	LAB - TASTE & ODOR	0	0	0	0	0	0	0	0	0	0	0	0
MSMT	MISCELLANEOUS MAINTENANCE	0	0	0	0	0	0	0	0	0	0	0	0
PRES	PRESSURE - DISTRIBUTION	0	0	0	0	0	0	0	0	0	0	0	0
REPR	REPAIR/INVESTIGATION	0	1	0	0	0	0	0	0	0	0	0	1
RMTR	READ METER SERVICES	0	0	0	0	0	0	0	0	0	0	0	0
RPST	REPAIR STREET	0	0	0	0	0	0	0	0	0	0	0	0
RRMT	RE-READ METER	0	0	0	0	0	0	0	0	0	0	0	0
SLM	SEWER LATERAL MAIN	0	0	0	0	0	0	0	0	0	0	0	0
SVLK	SERVICE LEAK	0	0	0	0	0	0	0	0	0	0	0	0
TOFF	TURN WATER OFF	0	0	0	0	0	0	0	0	0	0	0	0
TONN	TURN WATER ON	0	0	0	0	0	0	0	0	0	0	0	0
Totals		0	1	0	0	0	0	0	0	0	0	0	1

*Designated Types

Aqua America Aged Service Orders*
85 - Lake Suzy
Status: O - Needs to be Worked in the Field
Run Date: 8/13/2010

Service Order Type	Service Order Description	1-7	8-14	15-21	22-28	29-60	61-90	91-120	121-200	201-300	301-400	>400	TOTAL
BENN	BENCH TEST	0	0	0	0	0	0	0	0	0	0	0	0
CURB	CURB BOX MAINTENANCE - MISCELLANEOUS	0	0	0	0	0	0	0	0	0	0	0	0
HIC	HIGH CONSUMPTION	0	0	0	0	0	0	0	0	0	0	0	0
LABC	LAB - CHEMICAL CONTENT	1	0	0	0	0	0	0	0	0	0	0	1
LABD	LAB - DISCOLORED WATER	0	0	0	0	0	0	0	0	0	0	0	0
LABT	LAB - TASTE & ODOR	0	0	0	0	0	0	0	0	0	0	0	0
MSMT	MISCELLANEOUS MAINTENANCE	0	0	0	0	0	0	0	0	0	0	0	0
PRES	PRESSURE - DISTRIBUTION	0	0	0	0	0	0	0	0	0	0	0	0
REPR	REPAIR/INVESTIGATION	3	0	0	0	0	0	0	0	0	0	0	3
RMTR	READ METER SERVICES	0	0	0	0	0	0	0	0	0	0	0	0
RPST	REPAIR STREET	0	0	0	0	0	0	0	0	0	0	0	0
RRMT	RE-READ METER	0	0	0	0	0	0	0	0	0	0	0	0
SLM	SEWER LATERAL MAIN	0	0	0	0	0	0	0	0	0	0	0	0
SVLK	SERVICE LEAK	0	0	0	0	0	0	0	0	0	0	0	0
TOFF	TURN WATER OFF	0	0	0	0	0	0	0	0	0	0	0	0
TONN	TURN WATER ON	0	0	0	0	0	0	0	0	0	0	0	0
Totals		4	0	0	0	0	0	0	0	0	0	0	4

*Designated Types

Aqua America Aged Service Orders*
86 - Putnam
Status: O - Needs to be Worked in the Field
Run Date: 8/13/2010

Service Order Type	Service Order Description	1-7	8-14	15-21	22-28	29-60	61-90	91-120	121-200	201-300	301-400	>400	TOTAL
BENN	BENCH TEST	0	0	0	0	0	0	0	0	0	0	0	0
CURB	CURB BOX MAINTENANCE - MISCELLANEOUS	0	0	0	0	0	0	0	0	0	0	0	0
HIC	HIGH CONSUMPTION	0	0	0	0	0	0	0	0	0	0	0	0
LABC	LAB - CHEMICAL CONTENT	0	0	0	0	0	0	0	0	0	0	0	0
LABD	LAB - DISCOLORED WATER	0	0	0	0	0	0	0	0	0	0	0	0
LABT	LAB - TASTE & ODOR	0	0	0	0	0	0	0	0	0	0	0	0
MSMT	MISCELLANEOUS MAINTENANCE	0	0	0	0	0	0	0	0	0	0	0	0
PRES	PRESSURE - DISTRIBUTION	0	0	0	0	0	0	0	0	0	0	0	0
REPR	REPAIR/INVESTIGATION	0	0	0	0	0	0	0	0	0	0	0	0
RMTR	READ METER SERVICES	0	0	0	0	0	0	0	0	0	0	0	0
RPST	REPAIR STREET	0	0	0	0	0	0	0	0	0	0	0	0
RRMT	RE-READ METER	0	0	0	0	0	0	0	0	0	0	0	0
SLM	SEWER LATERAL MAIN	0	0	0	0	0	0	0	0	0	0	0	0
SVLK	SERVICE LEAK	0	0	0	0	0	0	0	0	0	0	0	0
TOFF	TURN WATER OFF	0	0	0	0	0	0	0	0	0	0	0	0
TONN	TURN WATER ON	0	0	0	0	0	0	0	0	0	0	0	0
Totals		0	0	0	0	0	0	0	0	0	0	0	0

*Designated Types

Aqua America Aged Service Orders*
87 - Lake Gibson
Status: O - Needs to be Worked in the Field
Run Date: 8/13/2010

Service Order Type	Service Order Description	1-7	8-14	15-21	22-28	29-60	61-90	91-120	121-200	201-300	301-400	>400	TOTAL
BENN	BENCH TEST	0	0	0	0	0	0	0	0	0	0	0	0
CURB	CURB BOX MAINTENANCE - MISCELLANEOUS	0	0	0	0	0	0	0	0	0	0	0	0
HIC	HIGH CONSUMPTION	0	0	0	0	0	0	0	0	0	0	0	0
LABC	LAB - CHEMICAL CONTENT	0	0	0	0	0	0	0	0	0	0	0	0
LABD	LAB - DISCOLORED WATER	0	0	0	0	0	0	0	0	0	0	0	0
LABT	LAB - TASTE & ODOR	0	0	0	0	0	0	0	0	0	0	0	0
MSMT	MISCELLANEOUS MAINTENANCE	0	0	0	0	0	0	0	0	0	0	0	0
PRES	PRESSURE - DISTRIBUTION	0	0	0	0	0	0	0	0	0	0	0	0
REPR	REPAIR/INVESTIGATION	4	3	0	0	0	0	0	0	0	0	0	7
RMTR	READ METER SERVICES	0	0	0	0	0	0	0	0	0	0	0	0
RPST	REPAIR STREET	0	0	0	0	0	0	0	0	0	0	0	0
RRMT	RE-READ METER	0	0	0	0	0	0	0	0	0	0	0	0
SLM	SEWER LATERAL MAIN	0	0	0	0	0	0	0	0	0	0	0	0
SVLK	SERVICE LEAK	0	0	0	0	0	0	0	0	0	0	0	0
TOFF	TURN WATER OFF	0	0	0	0	0	0	0	0	0	0	0	0
TONN	TURN WATER ON	0	0	0	0	0	0	0	0	0	0	0	0
Totals		4	3	0	0	0	0	0	0	0	0	0	7

*Designated Types

Aqua America Aged Service Orders*
89 - Seminole/FL Comm
Status: O - Needs to be Worked in the Field
Run Date: 8/13/2010

Service Order Type	Service Order Description	1-7	8-14	15-21	22-28	29-60	61-90	91-120	121-200	201-300	301-400	>400	TOTAL
BENN	BENCH TEST	0	0	0	0	0	0	0	0	0	0	0	0
CURB	CURB BOX MAINTENANCE - MISCELLANEOUS	0	0	0	0	0	0	0	0	0	0	0	0
HIC	HIGH CONSUMPTION	0	0	0	0	0	0	0	0	0	0	0	0
LABC	LAB - CHEMICAL CONTENT	0	0	0	0	0	0	0	0	0	0	0	0
LABD	LAB - DISCOLORED WATER	0	0	0	0	0	0	0	0	0	0	0	0
LABT	LAB - TASTE & ODOR	0	0	0	0	0	0	0	0	0	0	0	0
MSMT	MISCELLANEOUS MAINTENANCE	0	0	0	0	0	0	0	0	0	0	0	0
PRES	PRESSURE - DISTRIBUTION	0	0	0	0	0	0	0	0	0	0	0	0
REPR	REPAIR/INVESTIGATION	1	0	0	0	0	0	0	0	0	0	0	1
RMTR	READ METER SERVICES	0	0	0	0	0	0	0	0	0	0	0	0
RPST	REPAIR STREET	0	0	0	0	0	0	0	0	0	0	0	0
RRMT	RE-READ METER	0	0	0	0	0	0	0	0	0	0	0	0
SLM	SEWER LATERAL MAIN	1	0	0	0	0	0	0	0	0	0	0	1
SVLK	SERVICE LEAK	0	0	0	0	0	0	0	0	0	0	0	0
TOFF	TURN WATER OFF	0	0	0	0	0	0	0	0	0	0	0	0
TONN	TURN WATER ON	0	0	0	0	0	0	0	0	0	0	0	0
Totals		2	0	0	0	0	0	0	0	0	0	0	2

*Designated Types

Aqua America Aged Service Orders*
90 - Ocala
Status: O - Needs to be Worked in the Field
Run Date: 8/13/2010

Service Order Type	Service Order Description	1-7	8-14	15-21	22-28	29-60	61-90	91-120	121-200	201-300	301-400	>400	TOTAL
BENN	BENCH TEST	0	0	0	0	0	0	0	0	0	0	0	0
CURB	CURB BOX MAINTENANCE - MISCELLANEOUS	0	0	0	0	0	0	0	0	0	0	0	0
HIC	HIGH CONSUMPTION	0	0	0	0	0	0	0	0	0	0	0	0
LABC	LAB - CHEMICAL CONTENT	0	0	0	0	0	0	0	0	0	0	0	0
LABD	LAB - DISCOLORED WATER	0	0	0	0	0	0	0	0	0	0	0	0
LABT	LAB - TASTE & ODOR	1	0	0	0	0	0	0	0	0	0	0	1
MSMT	MISCELLANEOUS MAINTENANCE	0	0	0	0	0	0	0	0	0	0	0	0
PRES	PRESSURE - DISTRIBUTION	0	0	0	0	0	0	0	0	0	0	0	0
REPR	REPAIR/INVESTIGATION	0	0	0	0	0	0	0	0	0	0	0	0
RMTR	READ METER SERVICES	0	0	0	0	0	0	0	0	0	0	0	0
RPST	REPAIR STREET	0	0	0	0	0	0	0	0	0	0	0	0
RRMT	RE-READ METER	0	0	0	0	0	0	0	0	0	0	0	0
SLM	SEWER LATERAL MAIN	0	0	0	0	0	0	0	0	0	0	0	0
SVLK	SERVICE LEAK	0	0	0	0	0	0	0	0	0	0	0	0
TOFF	TURN WATER OFF	0	0	0	0	0	0	0	0	0	0	0	0
TONN	TURN WATER ON	0	0	0	0	0	0	0	0	0	0	0	0
Totals		1	0	0	0	0	0	0	0	0	0	0	1

*Designated Types

Aqua America Aged Service Orders*
91 - Palm Beach
Status: O - Needs to be Worked in the Field
Run Date: 8/13/2010

Service Order Type	Service Order Description	1-7	8-14	15-21	22-28	29-60	61-90	91-120	121-200	201-300	301-400	>400	TOTAL
BENN	BENCH TEST	0	0	0	0	0	0	0	0	0	0	0	0
CURB	CURB BOX MAINTENANCE - MISCELLANEOUS	0	0	0	0	0	0	0	0	0	0	0	0
HIC	HIGH CONSUMPTION	0	0	0	0	0	0	0	0	0	0	0	0
LABC	LAB - CHEMICAL CONTENT	0	0	0	0	0	0	0	0	0	0	0	0
LABD	LAB - DISCOLORED WATER	0	0	0	0	0	0	0	0	0	0	0	0
LABT	LAB - TASTE & ODOR	0	0	0	0	0	0	0	0	0	0	0	0
MSMT	MISCELLANEOUS MAINTENANCE	1	0	0	0	0	0	0	0	0	0	0	1
PRES	PRESSURE - DISTRIBUTION	0	0	0	0	0	0	0	0	0	0	0	0
REPR	REPAIR/INVESTIGATION	0	0	0	0	0	0	0	0	0	0	0	0
RMTR	READ METER SERVICES	0	0	0	0	0	0	0	0	0	0	0	0
RPST	REPAIR STREET	0	0	0	0	0	0	0	0	0	0	0	0
RRMT	RE-READ METER	0	0	0	0	0	0	0	0	0	0	0	0
SLM	SEWER LATERAL MAIN	0	0	0	0	0	0	0	0	0	0	0	0
SVLK	SERVICE LEAK	0	0	0	0	0	0	0	0	0	0	0	0
TOFF	TURN WATER OFF	0	0	0	0	0	0	0	0	0	0	0	0
TONN	TURN WATER ON	0	0	0	0	0	0	0	0	0	0	0	0
Totals		1	0	0	0	0	0	0	0	0	0	0	1

*Designated Types

Aqua America Aged Service Orders*
92 - South Seas
Status: 0 - Needs to be Worked in the Field
Run Date: 8/13/2010

Service Order Type	Service Order Description	1-7	8-14	15-21	22-28	29-60	61-90	91-120	121-200	201-300	301-400	>400	TOTAL
BENN	BENCH TEST	0	0	0	0	0	0	0	0	0	0	0	0
CURB	CURB BOX MAINTENANCE - MISCELLANEOUS	0	0	0	0	0	0	0	0	0	0	0	0
HIC	HIGH CONSUMPTION	0	0	0	0	0	0	0	0	0	0	0	0
LABC	LAB - CHEMICAL CONTENT	0	0	0	0	0	0	0	0	0	0	0	0
LABD	LAB - DISCOLORED WATER	0	0	0	0	0	0	0	0	0	0	0	0
LABT	LAB - TASTE & ODOR	0	0	0	0	0	0	0	0	0	0	0	0
MSMT	MISCELLANEOUS MAINTENANCE	0	0	0	0	0	0	0	0	0	0	0	0
PRES	PRESSURE - DISTRIBUTION	0	0	0	0	0	0	0	0	0	0	0	0
REPR	REPAIR/INVESTIGATION	0	0	0	0	0	0	0	0	0	0	0	0
RMTR	READ METER SERVICES	0	0	0	0	0	0	0	0	0	0	0	0
RPST	REPAIR STREET	0	0	0	0	0	0	0	0	0	0	0	0
RRMT	RE-READ METER	0	0	0	0	0	0	0	0	0	0	0	0
SLM	SEWER LATERAL MAIN	0	0	0	0	0	0	0	0	0	0	0	0
SVLK	SERVICE LEAK	0	0	0	0	0	0	0	0	0	0	0	0
TOFF	TURN WATER OFF	0	0	0	0	0	0	0	0	0	0	0	0
TONN	TURN WATER ON	0	0	0	0	0	0	0	0	0	0	0	0
Totals		0	0	0	0	0	0	0	0	0	0	0	0

*Designated Types

Aqua America Aged Service Orders*
93 - Sunny Hills/Washington
Status: O - Needs to be Worked in the Field
Run Date: 8/13/2010

Service Order Type	Service Order Description	1-7	8-14	15-21	22-28	29-60	61-90	91-120	121-200	201-300	301-400	>400	TOTAL
BENN	BENCH TEST	0	0	0	0	0	0	0	0	0	0	0	0
CURB	CURB BOX MAINTENANCE - MISCELLANEOUS	0	0	0	0	0	0	0	0	0	0	0	0
HIC	HIGH CONSUMPTION	0	0	0	0	0	0	0	0	0	0	0	0
LABC	LAB - CHEMICAL CONTENT	0	0	0	0	0	0	0	0	0	0	0	0
LABD	LAB - DISCOLORED WATER	0	0	0	0	0	0	0	0	0	0	0	0
LABT	LAB - TASTE & ODOR	0	0	0	0	0	0	0	0	0	0	0	0
MSMT	MISCELLANEOUS MAINTENANCE	0	0	0	0	0	0	0	0	0	0	0	0
PRES	PRESSURE - DISTRIBUTION	0	0	0	0	0	0	0	0	0	0	0	0
REPR	REPAIR/INVESTIGATION	1	0	0	0	0	0	0	0	0	0	0	1
RMTR	READ METER SERVICES	0	0	0	0	0	0	0	0	0	0	0	0
RPST	REPAIR STREET	0	0	0	0	0	0	0	0	0	0	0	0
RRMT	RE-READ METER	0	0	0	0	0	0	0	0	0	0	0	0
SLM	SEWER LATERAL MAIN	0	0	0	0	0	0	0	0	0	0	0	0
SVLK	SERVICE LEAK	0	0	0	0	0	0	0	0	0	0	0	0
TOFF	TURN WATER OFF	0	0	0	0	0	0	0	0	0	0	0	0
TONN	TURN WATER ON	0	0	0	0	0	0	0	0	0	0	0	0
Totals		1	0	0	0	0	0	0	0	0	0	0	1

*Designated Types

Aqua America Aged Service Orders*
94 - Palm Terrace
Status: 0 - Needs to be Worked in the Field
Run Date: 8/13/2010

Service Order Type	Service Order Description	1-7	8-14	15-21	22-28	29-60	61-90	91-120	121-200	201-300	301-400	>400	TOTAL
BENN	BENCH TEST	0	0	0	0	0	0	0	0	0	0	0	0
CURB	CURB BOX MAINTENANCE - MISCELLANEOUS	0	0	0	0	0	0	0	0	0	0	0	0
HIC	HIGH CONSUMPTION	0	0	0	0	0	0	0	0	0	0	0	0
LABC	LAB - CHEMICAL CONTENT	0	0	0	0	0	0	0	0	0	0	0	0
LABD	LAB - DISCOLORED WATER	0	0	0	0	0	0	0	0	0	0	0	0
LABT	LAB - TASTE & ODOR	0	0	0	0	0	0	0	0	0	0	0	0
MSMT	MISCELLANEOUS MAINTENANCE	0	0	0	0	0	0	0	0	0	0	0	0
PRES	PRESSURE - DISTRIBUTION	0	0	0	0	0	0	0	0	0	0	0	0
REPR	REPAIR/INVESTIGATION	1	0	0	0	0	0	0	0	0	0	0	1
RMTR	READ METER SERVICES	0	0	0	0	0	0	0	0	0	0	0	0
RPST	REPAIR STREET	0	0	0	0	0	0	0	0	0	0	0	0
RRMT	RE-READ METER	0	0	0	0	0	0	0	0	0	0	0	0
SLM	SEWER LATERAL MAIN	0	0	0	0	0	0	0	0	0	0	0	0
SVLK	SERVICE LEAK	0	0	0	0	0	0	0	0	0	0	0	0
TOFF	TURN WATER OFF	0	0	0	0	0	0	0	0	0	0	0	0
TONN	TURN WATER ON	0	0	0	0	0	0	0	0	0	0	0	0
Totals		1	0	0	0	0	0	0	0	0	0	0	1

*Designated Types

Aqua America Aged Service Orders*
95 - Sebring
Status: O - Needs to be Worked in the Field
Run Date: 8/13/2010

Service Order Type	Service Order Description	1-7	8-14	15-21	22-28	29-60	61-90	91-120	121-200	201-300	301-400	>400	TOTAL
BENN	BENCH TEST	0	0	0	0	0	0	0	0	0	0	0	0
CURB	CURB BOX MAINTENANCE - MISCELLANEOUS	0	0	0	0	0	0	0	0	0	0	0	0
HIC	HIGH CONSUMPTION	1	0	0	0	0	0	0	0	0	0	0	1
LABC	LAB - CHEMICAL CONTENT	0	0	0	0	0	0	0	0	0	0	0	0
LABD	LAB - DISCOLORED WATER	1	0	0	0	0	0	0	0	0	0	0	1
LABT	LAB - TASTE & ODOR	0	0	0	0	0	0	0	0	0	0	0	0
MSMT	MISCELLANEOUS MAINTENANCE	0	0	0	0	0	0	0	0	0	0	0	0
PRES	PRESSURE - DISTRIBUTION	1	0	0	0	0	0	0	0	0	0	0	1
REPR	REPAIR/INVESTIGATION	1	0	0	0	0	0	0	0	0	0	0	1
RMTR	READ METER SERVICES	0	0	0	0	0	0	0	0	0	0	0	0
RPST	REPAIR STREET	0	0	0	0	0	0	0	0	0	0	0	0
RRMT	RE-READ METER	0	0	0	0	0	0	0	0	0	0	0	0
SLM	SEWER LATERAL MAIN	0	0	0	0	0	0	0	0	0	0	0	0
SVLK	SERVICE LEAK	1	0	0	0	0	0	0	0	0	0	0	1
TOFF	TURN WATER OFF	0	0	0	0	0	0	0	0	0	0	0	0
TONN	TURN WATER ON	0	0	0	0	0	0	0	0	0	0	0	0
Totals		5	0	0	0	0	0	0	0	0	0	0	5

*Designated Types

Aqua America Aged Service Orders*
NO - No Orders
Status: O - Needs to be Worked in the Field
Run Date: 8/13/2010

Service Order Type	Service Order Description	1-7	8-14	15-21	22-28	29-60	61-90	91-120	121-200	201-300	301-400	>400	TOTAL
BENN	BENCH TEST	0	0	0	0	0	0	0	0	0	0	0	0
CURB	CURB BOX MAINTENANCE - MISCELLANEOUS	0	0	0	0	0	0	0	0	0	0	0	0
HIC	HIGH CONSUMPTION	0	0	0	0	0	0	0	0	0	0	0	0
LABC	LAB - CHEMICAL CONTENT	0	0	0	0	0	0	0	0	0	0	0	0
LABD	LAB - DISCOLORED WATER	0	0	0	0	0	0	0	0	0	0	0	0
LABT	LAB - TASTE & ODOR	0	0	0	0	0	0	0	0	0	0	0	0
MSMT	MISCELLANEOUS MAINTENANCE	0	0	0	0	0	0	0	0	0	0	0	0
PRES	PRESSURE - DISTRIBUTION	0	0	0	0	0	0	0	0	0	0	0	0
REPR	REPAIR/INVESTIGATION	0	0	0	0	0	0	0	0	0	0	0	0
RMTR	READ METER SERVICES	0	0	0	0	0	0	0	0	0	0	0	0
RPST	REPAIR STREET	0	0	0	0	0	0	0	0	0	0	0	0
RRMT	RE-READ METER	0	0	0	0	0	0	0	0	0	0	0	0
SLM	SEWER LATERAL MAIN	0	0	0	0	0	0	0	0	0	0	0	0
SVLK	SERVICE LEAK	0	0	0	0	0	0	0	0	0	0	0	0
TOFF	TURN WATER OFF	0	0	0	0	0	0	0	0	0	0	0	0
TONN	TURN WATER ON	0	0	0	0	0	0	0	0	0	0	0	0
Totals		0	0	0	0	0	0	0	0	0	0	0	0

*Designated Types

Aqua America Aged Service Orders*
FL - All Florida
Status: O - Needs to be Worked in the Field
Run Date: 8/20/2010

Service Order Type	Service Order Description	1-7	8-14	15-21	22-28	29-60	61-90	91-120	121-200	201-300	301-400	>400	TOTAL
BENN	BENCH TEST	0	0	0	0	0	0	0	0	0	0	0	0
CURB	CURB BOX MAINTENANCE - MISCELLANEOUS	0	0	0	0	0	0	0	0	0	0	0	0
HIC	HIGH CONSUMPTION	1	0	0	0	0	0	0	0	0	0	0	1
LABC	LAB - CHEMICAL CONTENT	0	0	0	0	0	0	0	0	0	0	0	0
LABD	LAB - DISCOLORED WATER	0	0	0	0	0	0	0	0	0	0	0	0
LABT	LAB - TASTE & ODOR	0	0	0	0	0	0	0	0	0	0	0	0
MSMT	MISCELLANEOUS MAINTENANCE	1	0	0	0	0	0	0	0	0	0	0	1
PRES	PRESSURE - DISTRIBUTION	0	0	0	0	0	0	0	0	0	0	0	0
REPR	REPAIR/INVESTIGATION	17	0	0	0	0	0	0	0	0	0	0	17
RMTR	READ METER SERVICES	0	0	0	0	0	0	0	0	0	0	0	0
RPST	REPAIR STREET	0	0	0	0	0	0	0	0	0	0	0	0
RRMT	RE-READ METER	0	0	0	0	0	0	0	0	0	0	0	0
SLM	SEWER LATERAL MAIN	0	0	0	0	0	0	0	0	0	0	0	0
SVLK	SERVICE LEAK	0	0	0	0	0	0	0	0	0	0	0	0
TOFF	TURN WATER OFF	0	0	0	0	0	0	0	0	0	0	0	0
TONN	TURN WATER ON	0	0	0	0	0	0	0	0	0	0	0	0
Totals		19	0	0	0	0	0	0	0	0	0	0	19

*Designated Types

Aqua America Aged Service Orders*
84 - Leesburg
Status: O - Needs to be Worked in the Field
Run Date: 8/20/2010

Service Order Type	Service Order Description	1-7	8-14	15-21	22-28	29-60	61-90	91-120	121-200	201-300	301-400	>400	TOTAL
BENN	BENCH TEST	0	0	0	0	0	0	0	0	0	0	0	0
CURB	CURB BOX MAINTENANCE - MISCELLANEOUS	0	0	0	0	0	0	0	0	0	0	0	0
HIC	HIGH CONSUMPTION	0	0	0	0	0	0	0	0	0	0	0	0
LABC	LAB - CHEMICAL CONTENT	0	0	0	0	0	0	0	0	0	0	0	0
LABD	LAB - DISCOLORED WATER	0	0	0	0	0	0	0	0	0	0	0	0
LABT	LAB - TASTE & ODOR	0	0	0	0	0	0	0	0	0	0	0	0
MSMT	MISCELLANEOUS MAINTENANCE	0	0	0	0	0	0	0	0	0	0	0	0
PRES	PRESSURE - DISTRIBUTION	0	0	0	0	0	0	0	0	0	0	0	0
REPR	REPAIR/INVESTIGATION	4	0	0	0	0	0	0	0	0	0	0	4
RMTR	READ METER SERVICES	0	0	0	0	0	0	0	0	0	0	0	0
RPST	REPAIR STREET	0	0	0	0	0	0	0	0	0	0	0	0
RRMT	RE-READ METER	0	0	0	0	0	0	0	0	0	0	0	0
SLM	SEWER LATERAL MAIN	0	0	0	0	0	0	0	0	0	0	0	0
SVLK	SERVICE LEAK	0	0	0	0	0	0	0	0	0	0	0	0
TOFF	TURN WATER OFF	0	0	0	0	0	0	0	0	0	0	0	0
TONN	TURN WATER ON	0	0	0	0	0	0	0	0	0	0	0	0
Totals		4	0	0	0	0	0	0	0	0	0	0	4

*Designated Types

Aqua America Aged Service Orders*
85 - Lake Suzy
Status: O - Needs to be Worked in the Field
Run Date: 8/20/2010

Service Order Type	Service Order Description	1-7	8-14	15-21	22-28	29-60	61-90	91-120	121-200	201-300	301-400	>400	TOTAL
BENN	BENCH TEST	0	0	0	0	0	0	0	0	0	0	0	0
CURB	CURB BOX MAINTENANCE - MISCELLANEOUS	0	0	0	0	0	0	0	0	0	0	0	0
HIC	HIGH CONSUMPTION	0	0	0	0	0	0	0	0	0	0	0	0
LABC	LAB - CHEMICAL CONTENT	0	0	0	0	0	0	0	0	0	0	0	0
LABD	LAB - DISCOLORED WATER	0	0	0	0	0	0	0	0	0	0	0	0
LABT	LAB - TASTE & ODOR	0	0	0	0	0	0	0	0	0	0	0	0
MSMT	MISCELLANEOUS MAINTENANCE	0	0	0	0	0	0	0	0	0	0	0	0
PRES	PRESSURE - DISTRIBUTION	0	0	0	0	0	0	0	0	0	0	0	0
REPR	REPAIR/INVESTIGATION	0	0	0	0	0	0	0	0	0	0	0	0
RMTR	READ METER SERVICES	0	0	0	0	0	0	0	0	0	0	0	0
RPST	REPAIR STREET	0	0	0	0	0	0	0	0	0	0	0	0
RRMT	RE-READ METER	0	0	0	0	0	0	0	0	0	0	0	0
SLM	SEWER LATERAL MAIN	0	0	0	0	0	0	0	0	0	0	0	0
SVLK	SERVICE LEAK	0	0	0	0	0	0	0	0	0	0	0	0
TOFF	TURN WATER OFF	0	0	0	0	0	0	0	0	0	0	0	0
TONN	TURN WATER ON	0	0	0	0	0	0	0	0	0	0	0	0
Totals		0	0	0	0	0	0	0	0	0	0	0	0

*Designated Types

Aqua America Aged Service Orders*
86 - Putnam
Status: O - Needs to be Worked in the Field
Run Date: 8/20/2010

Service Order Type	Service Order Description	1-7	8-14	15-21	22-28	29-60	61-90	91-120	121-200	201-300	301-400	>400	TOTAL
BENN	BENCH TEST	0	0	0	0	0	0	0	0	0	0	0	0
CURB	CURB BOX MAINTENANCE - MISCELLANEOUS	0	0	0	0	0	0	0	0	0	0	0	0
HIC	HIGH CONSUMPTION	0	0	0	0	0	0	0	0	0	0	0	0
LABC	LAB - CHEMICAL CONTENT	0	0	0	0	0	0	0	0	0	0	0	0
LABD	LAB - DISCOLORED WATER	0	0	0	0	0	0	0	0	0	0	0	0
LABT	LAB - TASTE & ODOR	0	0	0	0	0	0	0	0	0	0	0	0
MSMT	MISCELLANEOUS MAINTENANCE	0	0	0	0	0	0	0	0	0	0	0	0
PRES	PRESSURE - DISTRIBUTION	0	0	0	0	0	0	0	0	0	0	0	0
REPR	REPAIR/INVESTIGATION	0	0	0	0	0	0	0	0	0	0	0	0
RMTR	READ METER SERVICES	0	0	0	0	0	0	0	0	0	0	0	0
RPST	REPAIR STREET	0	0	0	0	0	0	0	0	0	0	0	0
RRMT	RE-READ METER	0	0	0	0	0	0	0	0	0	0	0	0
SLM	SEWER LATERAL MAIN	0	0	0	0	0	0	0	0	0	0	0	0
SVLK	SERVICE LEAK	0	0	0	0	0	0	0	0	0	0	0	0
TOFF	TURN WATER OFF	0	0	0	0	0	0	0	0	0	0	0	0
TONN	TURN WATER ON	0	0	0	0	0	0	0	0	0	0	0	0
Totals		0	0	0	0	0	0	0	0	0	0	0	0

*Designated Types

Aqua America Aged Service Orders*
87 - Lake Gibson
Status: O - Needs to be Worked in the Field
Run Date: 8/20/2010

Service Order Type	Service Order Description	1-7	8-14	15-21	22-28	29-60	61-90	91-120	121-200	201-300	301-400	>400	TOTAL
BENN	BENCH TEST	0	0	0	0	0	0	0	0	0	0	0	0
CURB	CURB BOX MAINTENANCE - MISCELLANEOUS	0	0	0	0	0	0	0	0	0	0	0	0
HIC	HIGH CONSUMPTION	0	0	0	0	0	0	0	0	0	0	0	0
LABC	LAB - CHEMICAL CONTENT	0	0	0	0	0	0	0	0	0	0	0	0
LABD	LAB - DISCOLORED WATER	0	0	0	0	0	0	0	0	0	0	0	0
LABT	LAB - TASTE & ODOR	0	0	0	0	0	0	0	0	0	0	0	0
MSMT	MISCELLANEOUS MAINTENANCE	0	0	0	0	0	0	0	0	0	0	0	0
PRES	PRESSURE - DISTRIBUTION	0	0	0	0	0	0	0	0	0	0	0	0
REPR	REPAIR/INVESTIGATION	7	0	0	0	0	0	0	0	0	0	0	7
RMTR	READ METER SERVICES	0	0	0	0	0	0	0	0	0	0	0	0
RPST	REPAIR STREET	0	0	0	0	0	0	0	0	0	0	0	0
RRMT	RE-READ METER	0	0	0	0	0	0	0	0	0	0	0	0
SLM	SEWER LATERAL MAIN	0	0	0	0	0	0	0	0	0	0	0	0
SVLK	SERVICE LEAK	0	0	0	0	0	0	0	0	0	0	0	0
TOFF	TURN WATER OFF	0	0	0	0	0	0	0	0	0	0	0	0
TONN	TURN WATER ON	0	0	0	0	0	0	0	0	0	0	0	0
Totals		7	0	0	0	0	0	0	0	0	0	0	7

*Designated Types

Aqua America Aged Service Orders*
89 - Seminole/FL Comm
Status: O - Needs to be Worked in the Field
Run Date: 8/20/2010

Service Order Type	Service Order Description	1-7	8-14	15-21	22-28	29-60	61-90	91-120	121-200	201-300	301-400	>400	TOTAL
BENN	BENCH TEST	0	0	0	0	0	0	0	0	0	0	0	0
CURB	CURB BOX MAINTENANCE - MISCELLANEOUS	0	0	0	0	0	0	0	0	0	0	0	0
HIC	HIGH CONSUMPTION	0	0	0	0	0	0	0	0	0	0	0	0
LABC	LAB - CHEMICAL CONTENT	0	0	0	0	0	0	0	0	0	0	0	0
LABD	LAB - DISCOLORED WATER	0	0	0	0	0	0	0	0	0	0	0	0
LABT	LAB - TASTE & ODOR	0	0	0	0	0	0	0	0	0	0	0	0
MSMT	MISCELLANEOUS MAINTENANCE	1	0	0	0	0	0	0	0	0	0	0	1
PRES	PRESSURE - DISTRIBUTION	0	0	0	0	0	0	0	0	0	0	0	0
REPR	REPAIR/INVESTIGATION	0	0	0	0	0	0	0	0	0	0	0	0
RMTR	READ METER SERVICES	0	0	0	0	0	0	0	0	0	0	0	0
RPST	REPAIR STREET	0	0	0	0	0	0	0	0	0	0	0	0
RRMT	RE-READ METER	0	0	0	0	0	0	0	0	0	0	0	0
SLM	SEWER LATERAL MAIN	0	0	0	0	0	0	0	0	0	0	0	0
SVLK	SERVICE LEAK	0	0	0	0	0	0	0	0	0	0	0	0
TOFF	TURN WATER OFF	0	0	0	0	0	0	0	0	0	0	0	0
TONN	TURN WATER ON	0	0	0	0	0	0	0	0	0	0	0	0
Totals		1	0	0	0	0	0	0	0	0	0	0	1

*Designated Types

Aqua America Aged Service Orders*
90 - Ocala
Status: O - Needs to be Worked in the Field
Run Date: 8/20/2010

Service Order Type	Service Order Description	1-7	8-14	15-21	22-28	29-60	61-90	91-120	121-200	201-300	301-400	>400	TOTAL
BENN	BENCH TEST	0	0	0	0	0	0	0	0	0	0	0	0
CURB	CURB BOX MAINTENANCE - MISCELLANEOUS	0	0	0	0	0	0	0	0	0	0	0	0
HIC	HIGH CONSUMPTION	0	0	0	0	0	0	0	0	0	0	0	0
LABC	LAB - CHEMICAL CONTENT	0	0	0	0	0	0	0	0	0	0	0	0
LABD	LAB - DISCOLORED WATER	0	0	0	0	0	0	0	0	0	0	0	0
LABT	LAB - TASTE & ODOR	0	0	0	0	0	0	0	0	0	0	0	0
MSMT	MISCELLANEOUS MAINTENANCE	0	0	0	0	0	0	0	0	0	0	0	0
PRES	PRESSURE - DISTRIBUTION	0	0	0	0	0	0	0	0	0	0	0	0
REPR	REPAIR/INVESTIGATION	0	0	0	0	0	0	0	0	0	0	0	0
RMTR	READ METER SERVICES	0	0	0	0	0	0	0	0	0	0	0	0
RPST	REPAIR STREET	0	0	0	0	0	0	0	0	0	0	0	0
RRMT	RE-READ METER	0	0	0	0	0	0	0	0	0	0	0	0
SLM	SEWER LATERAL MAIN	0	0	0	0	0	0	0	0	0	0	0	0
SVLK	SERVICE LEAK	0	0	0	0	0	0	0	0	0	0	0	0
TOFF	TURN WATER OFF	0	0	0	0	0	0	0	0	0	0	0	0
TONN	TURN WATER ON	0	0	0	0	0	0	0	0	0	0	0	0
Totals		0	0	0	0	0	0	0	0	0	0	0	0

*Designated Types

Aqua America Aged Service Orders*
91 - Palm Beach
Status: O - Needs to be Worked in the Field
Run Date: 8/20/2010

Service Order Type	Service Order Description	1-7	8-14	15-21	22-28	29-60	61-90	91-120	121-200	201-300	301-400	>400	TOTAL
BENN	BENCH TEST	0	0	0	0	0	0	0	0	0	0	0	0
CURB	CURB BOX MAINTENANCE - MISCELLANEOUS	0	0	0	0	0	0	0	0	0	0	0	0
HIC	HIGH CONSUMPTION	1	0	0	0	0	0	0	0	0	0	0	1
LABC	LAB - CHEMICAL CONTENT	0	0	0	0	0	0	0	0	0	0	0	0
LABD	LAB - DISCOLORED WATER	0	0	0	0	0	0	0	0	0	0	0	0
LABT	LAB - TASTE & ODOR	0	0	0	0	0	0	0	0	0	0	0	0
MSMT	MISCELLANEOUS MAINTENANCE	0	0	0	0	0	0	0	0	0	0	0	0
PRES	PRESSURE - DISTRIBUTION	0	0	0	0	0	0	0	0	0	0	0	0
REPR	REPAIR/INVESTIGATION	1	0	0	0	0	0	0	0	0	0	0	1
RMTR	READ METER SERVICES	0	0	0	0	0	0	0	0	0	0	0	0
RPST	REPAIR STREET	0	0	0	0	0	0	0	0	0	0	0	0
RRMT	RE-READ METER	0	0	0	0	0	0	0	0	0	0	0	0
SLM	SEWER LATERAL MAIN	0	0	0	0	0	0	0	0	0	0	0	0
SVLK	SERVICE LEAK	0	0	0	0	0	0	0	0	0	0	0	0
TOFF	TURN WATER OFF	0	0	0	0	0	0	0	0	0	0	0	0
TONN	TURN WATER ON	0	0	0	0	0	0	0	0	0	0	0	0
Totals		2	0	0	0	0	0	0	0	0	0	0	2

*Designated Types

Aqua America Aged Service Orders*
92 - South Seas
Status: O - Needs to be Worked in the Field
Run Date: 8/20/2010

Service Order Type	Service Order Description	1-7	8-14	15-21	22-28	29-60	61-90	91-120	121-200	201-300	301-400	>400	TOTAL
BENN	BENCH TEST	0	0	0	0	0	0	0	0	0	0	0	0
CURB	CURB BOX MAINTENANCE - MISCELLANEOUS	0	0	0	0	0	0	0	0	0	0	0	0
HIC	HIGH CONSUMPTION	0	0	0	0	0	0	0	0	0	0	0	0
LABC	LAB - CHEMICAL CONTENT	0	0	0	0	0	0	0	0	0	0	0	0
LABD	LAB - DISCOLORED WATER	0	0	0	0	0	0	0	0	0	0	0	0
LABT	LAB - TASTE & ODOR	0	0	0	0	0	0	0	0	0	0	0	0
MSMT	MISCELLANEOUS MAINTENANCE	0	0	0	0	0	0	0	0	0	0	0	0
PRES	PRESSURE - DISTRIBUTION	0	0	0	0	0	0	0	0	0	0	0	0
REPR	REPAIR/INVESTIGATION	0	0	0	0	0	0	0	0	0	0	0	0
RMTR	READ METER SERVICES	0	0	0	0	0	0	0	0	0	0	0	0
RPST	REPAIR STREET	0	0	0	0	0	0	0	0	0	0	0	0
RRMT	RE-READ METER	0	0	0	0	0	0	0	0	0	0	0	0
SLM	SEWER LATERAL MAIN	0	0	0	0	0	0	0	0	0	0	0	0
SVLK	SERVICE LEAK	0	0	0	0	0	0	0	0	0	0	0	0
TOFF	TURN WATER OFF	0	0	0	0	0	0	0	0	0	0	0	0
TONN	TURN WATER ON	0	0	0	0	0	0	0	0	0	0	0	0
Totals		0	0	0	0	0	0	0	0	0	0	0	0

*Designated Types

Aqua America Aged Service Orders*
93 - Sunny Hills/Washington
Status: O - Needs to be Worked in the Field
Run Date: 8/20/2010

Service Order Type	Service Order Description	1-7	8-14	15-21	22-28	29-60	61-90	91-120	121-200	201-300	301-400	>400	TOTAL
BENN	BENCH TEST	0	0	0	0	0	0	0	0	0	0	0	0
CURB	CURB BOX MAINTENANCE - MISCELLANEOUS	0	0	0	0	0	0	0	0	0	0	0	0
HIC	HIGH CONSUMPTION	0	0	0	0	0	0	0	0	0	0	0	0
LABC	LAB - CHEMICAL CONTENT	0	0	0	0	0	0	0	0	0	0	0	0
LABD	LAB - DISCOLORED WATER	0	0	0	0	0	0	0	0	0	0	0	0
LABT	LAB - TASTE & ODOR	0	0	0	0	0	0	0	0	0	0	0	0
MSMT	MISCELLANEOUS MAINTENANCE	0	0	0	0	0	0	0	0	0	0	0	0
PRES	PRESSURE - DISTRIBUTION	0	0	0	0	0	0	0	0	0	0	0	0
REPR	REPAIR/INVESTIGATION	1	0	0	0	0	0	0	0	0	0	0	1
RMTR	READ METER SERVICES	0	0	0	0	0	0	0	0	0	0	0	0
RPST	REPAIR STREET	0	0	0	0	0	0	0	0	0	0	0	0
RRMT	RE-READ METER	0	0	0	0	0	0	0	0	0	0	0	0
SLM	SEWER LATERAL MAIN	0	0	0	0	0	0	0	0	0	0	0	0
SVLK	SERVICE LEAK	0	0	0	0	0	0	0	0	0	0	0	0
TOFF	TURN WATER OFF	0	0	0	0	0	0	0	0	0	0	0	0
TONN	TURN WATER ON	0	0	0	0	0	0	0	0	0	0	0	0
Totals		1	0	0	0	0	0	0	0	0	0	0	1

*Designated Types

Aqua America Aged Service Orders*
94 - Palm Terrace
Status: O - Needs to be Worked in the Field
Run Date: 8/20/2010

Service Order Type	Service Order Description	1-7	8-14	15-21	22-28	29-60	61-90	91-120	121-200	201-300	301-400	>400	TOTAL
BENN	BENCH TEST	0	0	0	0	0	0	0	0	0	0	0	0
CURB	CURB BOX MAINTENANCE - MISCELLANEOUS	0	0	0	0	0	0	0	0	0	0	0	0
HIC	HIGH CONSUMPTION	0	0	0	0	0	0	0	0	0	0	0	0
LABC	LAB - CHEMICAL CONTENT	0	0	0	0	0	0	0	0	0	0	0	0
LABD	LAB - DISCOLORED WATER	0	0	0	0	0	0	0	0	0	0	0	0
LABT	LAB - TASTE & ODOR	0	0	0	0	0	0	0	0	0	0	0	0
MSMT	MISCELLANEOUS MAINTENANCE	0	0	0	0	0	0	0	0	0	0	0	0
PRES	PRESSURE - DISTRIBUTION	0	0	0	0	0	0	0	0	0	0	0	0
REPR	REPAIR/INVESTIGATION	4	0	0	0	0	0	0	0	0	0	0	4
RMTR	READ METER SERVICES	0	0	0	0	0	0	0	0	0	0	0	0
RPST	REPAIR STREET	0	0	0	0	0	0	0	0	0	0	0	0
RRMT	RE-READ METER	0	0	0	0	0	0	0	0	0	0	0	0
SLM	SEWER LATERAL MAIN	0	0	0	0	0	0	0	0	0	0	0	0
SVLK	SERVICE LEAK	0	0	0	0	0	0	0	0	0	0	0	0
TOFF	TURN WATER OFF	0	0	0	0	0	0	0	0	0	0	0	0
TONN	TURN WATER ON	0	0	0	0	0	0	0	0	0	0	0	0
Totals		4	0	0	0	0	0	0	0	0	0	0	4

*Designated Types

Aqua America Aged Service Orders*
95 - Sebring
Status: O - Needs to be Worked in the Field
Run Date: 8/20/2010

Service Order Type	Service Order Description	1-7	8-14	15-21	22-28	29-60	61-90	91-120	121-200	201-300	301-400	>400	TOTAL
BENN	BENCH TEST	0	0	0	0	0	0	0	0	0	0	0	0
CURB	CURB BOX MAINTENANCE - MISCELLANEOUS	0	0	0	0	0	0	0	0	0	0	0	0
HIC	HIGH CONSUMPTION	0	0	0	0	0	0	0	0	0	0	0	0
LABC	LAB - CHEMICAL CONTENT	0	0	0	0	0	0	0	0	0	0	0	0
LABD	LAB - DISCOLORED WATER	0	0	0	0	0	0	0	0	0	0	0	0
LABT	LAB - TASTE & ODOR	0	0	0	0	0	0	0	0	0	0	0	0
MSMT	MISCELLANEOUS MAINTENANCE	0	0	0	0	0	0	0	0	0	0	0	0
PRES	PRESSURE - DISTRIBUTION	0	0	0	0	0	0	0	0	0	0	0	0
REPR	REPAIR/INVESTIGATION	0	0	0	0	0	0	0	0	0	0	0	0
RMTR	READ METER SERVICES	0	0	0	0	0	0	0	0	0	0	0	0
RPST	REPAIR STREET	0	0	0	0	0	0	0	0	0	0	0	0
RRMT	RE-READ METER	0	0	0	0	0	0	0	0	0	0	0	0
SLM	SEWER LATERAL MAIN	0	0	0	0	0	0	0	0	0	0	0	0
SVLK	SERVICE LEAK	0	0	0	0	0	0	0	0	0	0	0	0
TOFF	TURN WATER OFF	0	0	0	0	0	0	0	0	0	0	0	0
TONN	TURN WATER ON	0	0	0	0	0	0	0	0	0	0	0	0
Totals		0	0	0	0	0	0	0	0	0	0	0	0

*Designated Types

Aqua America Aged Service Orders*
NO - No Orders
Status: O - Needs to be Worked in the Field
Run Date: 8/20/2010

Service Order Type	Service Order Description	1-7	8-14	15-21	22-28	29-60	61-90	91-120	121-200	201-300	301-400	>400	TOTAL
BENN	BENCH TEST	0	0	0	0	0	0	0	0	0	0	0	0
CURB	CURB BOX MAINTENANCE - MISCELLANEOUS	0	0	0	0	0	0	0	0	0	0	0	0
HIC	HIGH CONSUMPTION	0	0	0	0	0	0	0	0	0	0	0	0
LABC	LAB - CHEMICAL CONTENT	0	0	0	0	0	0	0	0	0	0	0	0
LABD	LAB - DISCOLORED WATER	0	0	0	0	0	0	0	0	0	0	0	0
LABT	LAB - TASTE & ODOR	0	0	0	0	0	0	0	0	0	0	0	0
MSMT	MISCELLANEOUS MAINTENANCE	0	0	0	0	0	0	0	0	0	0	0	0
PRES	PRESSURE - DISTRIBUTION	0	0	0	0	0	0	0	0	0	0	0	0
REPR	REPAIR/INVESTIGATION	0	0	0	0	0	0	0	0	0	0	0	0
RMTR	READ METER SERVICES	0	0	0	0	0	0	0	0	0	0	0	0
RPST	REPAIR STREET	0	0	0	0	0	0	0	0	0	0	0	0
RRMT	RE-READ METER	0	0	0	0	0	0	0	0	0	0	0	0
SLM	SEWER LATERAL MAIN	0	0	0	0	0	0	0	0	0	0	0	0
SVLK	SERVICE LEAK	0	0	0	0	0	0	0	0	0	0	0	0
TOFF	TURN WATER OFF	0	0	0	0	0	0	0	0	0	0	0	0
TONN	TURN WATER ON	0	0	0	0	0	0	0	0	0	0	0	0
Totals		0	0	0	0	0	0	0	0	0	0	0	0

*Designated Types

Aqua America Aged Service Orders*
FL - All Florida
Status: O - Needs to be Worked in the Field
Run Date: 8/27/2010

Service Order Type	Service Order Description	1-7	8-14	15-21	22-28	29-60	61-90	91-120	121-200	201-300	301-400	>400	TOTAL
BENN	BENCH TEST	0	0	0	0	0	0	0	0	0	0	0	0
CURB	CURB BOX MAINTENANCE - MISCELLANEOUS	0	0	0	0	0	0	0	0	0	0	0	0
HIC	HIGH CONSUMPTION	3	1	0	0	0	0	0	0	0	0	0	4
LABC	LAB - CHEMICAL CONTENT	1	0	0	0	0	0	0	0	0	0	0	1
LABD	LAB - DISCOLORED WATER	0	0	0	0	0	0	0	0	0	0	0	0
LABT	LAB - TASTE & ODOR	1	0	0	0	0	0	0	0	0	0	0	1
MSMT	MISCELLANEOUS MAINTENANCE	1	0	0	0	0	0	0	0	0	0	0	1
PRES	PRESSURE - DISTRIBUTION	0	0	0	0	0	0	0	0	0	0	0	0
REPR	REPAIR/INVESTIGATION	12	0	0	0	0	0	0	0	0	0	0	12
RMTR	READ METER SERVICES	0	0	0	0	0	0	0	0	0	0	0	0
RPST	REPAIR STREET	0	0	0	0	0	0	0	0	0	0	0	0
RRMT	RE-READ METER	0	0	0	0	0	0	0	0	0	0	0	0
SLM	SEWER LATERAL MAIN	1	0	0	0	0	0	0	0	0	0	0	1
SVLK	SERVICE LEAK	0	0	0	0	0	0	0	0	0	0	0	0
TOFF	TURN WATER OFF	1	0	0	0	0	0	0	0	0	0	0	1
TONN	TURN WATER ON	1	0	0	0	0	0	0	0	0	0	0	1
Totals		21	1	0	0	0	0	0	0	0	0	0	22

*Designated Types

Aqua America Aged Service Orders*
84 - Leesburg
Status: O - Needs to be Worked in the Field
Run Date: 8/27/2010

Service Order Type	Service Order Description	1-7	8-14	15-21	22-28	29-60	61-90	91-120	121-200	201-300	301-400	>400	TOTAL
BENN	BENCH TEST	0	0	0	0	0	0	0	0	0	0	0	0
CURB	CURB BOX MAINTENANCE - MISCELLANEOUS	0	0	0	0	0	0	0	0	0	0	0	0
HIC	HIGH CONSUMPTION	0	0	0	0	0	0	0	0	0	0	0	0
LABC	LAB - CHEMICAL CONTENT	0	0	0	0	0	0	0	0	0	0	0	0
LABD	LAB - DISCOLORED WATER	0	0	0	0	0	0	0	0	0	0	0	0
LABT	LAB - TASTE & ODOR	0	0	0	0	0	0	0	0	0	0	0	0
MSMT	MISCELLANEOUS MAINTENANCE	0	0	0	0	0	0	0	0	0	0	0	0
PRES	PRESSURE - DISTRIBUTION	0	0	0	0	0	0	0	0	0	0	0	0
REPR	REPAIR/INVESTIGATION	3	0	0	0	0	0	0	0	0	0	0	3
RMTR	READ METER SERVICES	0	0	0	0	0	0	0	0	0	0	0	0
RPST	REPAIR STREET	0	0	0	0	0	0	0	0	0	0	0	0
RRMT	RE-READ METER	0	0	0	0	0	0	0	0	0	0	0	0
SLM	SEWER LATERAL MAIN	0	0	0	0	0	0	0	0	0	0	0	0
SVLK	SERVICE LEAK	0	0	0	0	0	0	0	0	0	0	0	0
TOFF	TURN WATER OFF	1	0	0	0	0	0	0	0	0	0	0	1
TONN	TURN WATER ON	1	0	0	0	0	0	0	0	0	0	0	1
Totals		5	0	0	0	0	0	0	0	0	0	0	5

*Designated Types

Aqua America Aged Service Orders*
85 - Lake Suzy
Status: O - Needs to be Worked in the Field
Run Date: 8/27/2010

Service Order Type	Service Order Description	1-7	8-14	15-21	22-28	29-60	61-90	91-120	121-200	201-300	301-400	>400	TOTAL
BENN	BENCH TEST	0	0	0	0	0	0	0	0	0	0	0	0
CURB	CURB BOX MAINTENANCE - MISCELLANEOUS	0	0	0	0	0	0	0	0	0	0	0	0
HIC	HIGH CONSUMPTION	0	0	0	0	0	0	0	0	0	0	0	0
LABC	LAB - CHEMICAL CONTENT	0	0	0	0	0	0	0	0	0	0	0	0
LABD	LAB - DISCOLORED WATER	0	0	0	0	0	0	0	0	0	0	0	0
LABT	LAB - TASTE & ODOR	0	0	0	0	0	0	0	0	0	0	0	0
MSMT	MISCELLANEOUS MAINTENANCE	0	0	0	0	0	0	0	0	0	0	0	0
PRES	PRESSURE - DISTRIBUTION	0	0	0	0	0	0	0	0	0	0	0	0
REPR	REPAIR/INVESTIGATION	4	0	0	0	0	0	0	0	0	0	0	4
RMTR	READ METER SERVICES	0	0	0	0	0	0	0	0	0	0	0	0
RPST	REPAIR STREET	0	0	0	0	0	0	0	0	0	0	0	0
RRMT	RE-READ METER	0	0	0	0	0	0	0	0	0	0	0	0
SLM	SEWER LATERAL MAIN	0	0	0	0	0	0	0	0	0	0	0	0
SVLK	SERVICE LEAK	0	0	0	0	0	0	0	0	0	0	0	0
TOFF	TURN WATER OFF	0	0	0	0	0	0	0	0	0	0	0	0
TONN	TURN WATER ON	0	0	0	0	0	0	0	0	0	0	0	0
Totals		4	0	0	0	0	0	0	0	0	0	0	4

*Designated Types

Aqua America Aged Service Orders*
86 - Putnam
Status: O - Needs to be Worked in the Field
Run Date: 8/27/2010

Service Order Type	Service Order Description	1-7	8-14	15-21	22-28	29-60	61-90	91-120	121-200	201-300	301-400	>400	TOTAL
BENN	BENCH TEST	0	0	0	0	0	0	0	0	0	0	0	0
CURB	CURB BOX MAINTENANCE - MISCELLANEOUS	0	0	0	0	0	0	0	0	0	0	0	0
HIC	HIGH CONSUMPTION	0	0	0	0	0	0	0	0	0	0	0	0
LABC	LAB - CHEMICAL CONTENT	0	0	0	0	0	0	0	0	0	0	0	0
LABD	LAB - DISCOLORED WATER	0	0	0	0	0	0	0	0	0	0	0	0
LABT	LAB - TASTE & ODOR	0	0	0	0	0	0	0	0	0	0	0	0
MSMT	MISCELLANEOUS MAINTENANCE	0	0	0	0	0	0	0	0	0	0	0	0
PRES	PRESSURE - DISTRIBUTION	0	0	0	0	0	0	0	0	0	0	0	0
REPR	REPAIR/INVESTIGATION	1	0	0	0	0	0	0	0	0	0	0	1
RMTR	READ METER SERVICES	0	0	0	0	0	0	0	0	0	0	0	0
RPST	REPAIR STREET	0	0	0	0	0	0	0	0	0	0	0	0
RRMT	RE-READ METER	0	0	0	0	0	0	0	0	0	0	0	0
SLM	SEWER LATERAL MAIN	0	0	0	0	0	0	0	0	0	0	0	0
SVLK	SERVICE LEAK	0	0	0	0	0	0	0	0	0	0	0	0
TOFF	TURN WATER OFF	0	0	0	0	0	0	0	0	0	0	0	0
TONN	TURN WATER ON	0	0	0	0	0	0	0	0	0	0	0	0
Totals		1	0	0	0	0	0	0	0	0	0	0	1

*Designated Types

Aqua America Aged Service Orders*
87 - Lake Gibson
Status: O - Needs to be Worked in the Field
Run Date: 8/27/2010

Service Order Type	Service Order Description	1-7	8-14	15-21	22-28	29-60	61-90	91-120	121-200	201-300	301-400	>400	TOTAL
BENN	BENCH TEST	0	0	0	0	0	0	0	0	0	0	0	0
CURB	CURB BOX MAINTENANCE - MISCELLANEOUS	0	0	0	0	0	0	0	0	0	0	0	0
HIC	HIGH CONSUMPTION	0	0	0	0	0	0	0	0	0	0	0	0
LABC	LAB - CHEMICAL CONTENT	0	0	0	0	0	0	0	0	0	0	0	0
LABD	LAB - DISCOLORED WATER	0	0	0	0	0	0	0	0	0	0	0	0
LABT	LAB - TASTE & ODOR	0	0	0	0	0	0	0	0	0	0	0	0
MSMT	MISCELLANEOUS MAINTENANCE	0	0	0	0	0	0	0	0	0	0	0	0
PRES	PRESSURE - DISTRIBUTION	0	0	0	0	0	0	0	0	0	0	0	0
REPR	REPAIR/INVESTIGATION	0	0	0	0	0	0	0	0	0	0	0	0
RMTR	READ METER SERVICES	0	0	0	0	0	0	0	0	0	0	0	0
RPST	REPAIR STREET	0	0	0	0	0	0	0	0	0	0	0	0
RRMT	RE-READ METER	0	0	0	0	0	0	0	0	0	0	0	0
SLM	SEWER LATERAL MAIN	0	0	0	0	0	0	0	0	0	0	0	0
SVLK	SERVICE LEAK	0	0	0	0	0	0	0	0	0	0	0	0
TOFF	TURN WATER OFF	0	0	0	0	0	0	0	0	0	0	0	0
TONN	TURN WATER ON	0	0	0	0	0	0	0	0	0	0	0	0
Totals		0	0	0	0	0	0	0	0	0	0	0	0

*Designated Types

Aqua America Aged Service Orders*
89 - Seminole/FL Comm
Status: O - Needs to be Worked in the Field
Run Date: 8/27/2010

Service Order Type	Service Order Description	1-7	8-14	15-21	22-28	29-60	61-90	91-120	121-200	201-300	301-400	>400	TOTAL
BENN	BENCH TEST	0	0	0	0	0	0	0	0	0	0	0	0
CURB	CURB BOX MAINTENANCE - MISCELLANEOUS	0	0	0	0	0	0	0	0	0	0	0	0
HIC	HIGH CONSUMPTION	0	0	0	0	0	0	0	0	0	0	0	0
LABC	LAB - CHEMICAL CONTENT	0	0	0	0	0	0	0	0	0	0	0	0
LABD	LAB - DISCOLORED WATER	0	0	0	0	0	0	0	0	0	0	0	0
LABT	LAB - TASTE & ODOR	0	0	0	0	0	0	0	0	0	0	0	0
MSMT	MISCELLANEOUS MAINTENANCE	0	0	0	0	0	0	0	0	0	0	0	0
PRES	PRESSURE - DISTRIBUTION	0	0	0	0	0	0	0	0	0	0	0	0
REPR	REPAIR/INVESTIGATION	0	0	0	0	0	0	0	0	0	0	0	0
RMTR	READ METER SERVICES	0	0	0	0	0	0	0	0	0	0	0	0
RPST	REPAIR STREET	0	0	0	0	0	0	0	0	0	0	0	0
RRMT	RE-READ METER	0	0	0	0	0	0	0	0	0	0	0	0
SLM	SEWER LATERAL MAIN	0	0	0	0	0	0	0	0	0	0	0	0
SVLK	SERVICE LEAK	0	0	0	0	0	0	0	0	0	0	0	0
TOFF	TURN WATER OFF	0	0	0	0	0	0	0	0	0	0	0	0
TONN	TURN WATER ON	0	0	0	0	0	0	0	0	0	0	0	0
Totals		0	0	0	0	0	0	0	0	0	0	0	0

*Designated Types

Aqua America Aged Service Orders*
90 - Ocala
Status: 0 - Needs to be Worked in the Field
Run Date: 8/27/2010

Service Order Type	Service Order Description	1-7	8-14	15-21	22-28	29-60	61-90	91-120	121-200	201-300	301-400	>400	TOTAL
BENN	BENCH TEST	0	0	0	0	0	0	0	0	0	0	0	0
CURB	CURB BOX MAINTENANCE - MISCELLANEOUS	0	0	0	0	0	0	0	0	0	0	0	0
HIC	HIGH CONSUMPTION	2	0	0	0	0	0	0	0	0	0	0	2
LABC	LAB - CHEMICAL CONTENT	1	0	0	0	0	0	0	0	0	0	0	1
LABD	LAB - DISCOLORED WATER	0	0	0	0	0	0	0	0	0	0	0	0
LABT	LAB - TASTE & ODOR	0	0	0	0	0	0	0	0	0	0	0	0
MSMT	MISCELLANEOUS MAINTENANCE	0	0	0	0	0	0	0	0	0	0	0	0
PRES	PRESSURE - DISTRIBUTION	0	0	0	0	0	0	0	0	0	0	0	0
REPR	REPAIR/INVESTIGATION	3	0	0	0	0	0	0	0	0	0	0	3
RMTR	READ METER SERVICES	0	0	0	0	0	0	0	0	0	0	0	0
RPST	REPAIR STREET	0	0	0	0	0	0	0	0	0	0	0	0
RRMT	RE-READ METER	0	0	0	0	0	0	0	0	0	0	0	0
SLM	SEWER LATERAL MAIN	0	0	0	0	0	0	0	0	0	0	0	0
SVLK	SERVICE LEAK	0	0	0	0	0	0	0	0	0	0	0	0
TOFF	TURN WATER OFF	0	0	0	0	0	0	0	0	0	0	0	0
TONN	TURN WATER ON	0	0	0	0	0	0	0	0	0	0	0	0
Totals		6	0	0	0	0	0	0	0	0	0	0	6

*Designated Types

Aqua America Aged Service Orders*
91 - Palm Beach
Status: 0 - Needs to be Worked in the Field
Run Date: 8/27/2010

Service Order Type	Service Order Description	1-7	8-14	15-21	22-28	29-60	61-90	91-120	121-200	201-300	301-400	>400	TOTAL
BENN	BENCH TEST	0	0	0	0	0	0	0	0	0	0	0	0
CURB	CURB BOX MAINTENANCE - MISCELLANEOUS	0	0	0	0	0	0	0	0	0	0	0	0
HIC	HIGH CONSUMPTION	1	1	0	0	0	0	0	0	0	0	0	2
LABC	LAB - CHEMICAL CONTENT	0	0	0	0	0	0	0	0	0	0	0	0
LABD	LAB - DISCOLORED WATER	0	0	0	0	0	0	0	0	0	0	0	0
LABT	LAB - TASTE & ODOR	1	0	0	0	0	0	0	0	0	0	0	1
MSMT	MISCELLANEOUS MAINTENANCE	1	0	0	0	0	0	0	0	0	0	0	1
PRES	PRESSURE - DISTRIBUTION	0	0	0	0	0	0	0	0	0	0	0	0
REPR	REPAIR/INVESTIGATION	0	0	0	0	0	0	0	0	0	0	0	0
RMTR	READ METER SERVICES	0	0	0	0	0	0	0	0	0	0	0	0
RPST	REPAIR STREET	0	0	0	0	0	0	0	0	0	0	0	0
RRMT	RE-READ METER	0	0	0	0	0	0	0	0	0	0	0	0
SLM	SEWER LATERAL MAIN	0	0	0	0	0	0	0	0	0	0	0	0
SVLK	SERVICE LEAK	0	0	0	0	0	0	0	0	0	0	0	0
TOFF	TURN WATER OFF	0	0	0	0	0	0	0	0	0	0	0	0
TONN	TURN WATER ON	0	0	0	0	0	0	0	0	0	0	0	0
Totals		3	1	0	0	0	0	0	0	0	0	0	4

*Designated Types

Aqua America Aged Service Orders*
92 - South Seas
Status: O - Needs to be Worked in the Field
Run Date: 8/27/2010

Service Order Type	Service Order Description	1-7	8-14	15-21	22-28	29-60	61-90	91-120	121-200	201-300	301-400	>400	TOTAL
BENN	BENCH TEST	0	0	0	0	0	0	0	0	0	0	0	0
CURB	CURB BOX MAINTENANCE - MISCELLANEOUS	0	0	0	0	0	0	0	0	0	0	0	0
HIC	HIGH CONSUMPTION	0	0	0	0	0	0	0	0	0	0	0	0
LABC	LAB - CHEMICAL CONTENT	0	0	0	0	0	0	0	0	0	0	0	0
LABD	LAB - DISCOLORED WATER	0	0	0	0	0	0	0	0	0	0	0	0
LABT	LAB - TASTE & ODOR	0	0	0	0	0	0	0	0	0	0	0	0
MSMT	MISCELLANEOUS MAINTENANCE	0	0	0	0	0	0	0	0	0	0	0	0
PRES	PRESSURE - DISTRIBUTION	0	0	0	0	0	0	0	0	0	0	0	0
REPR	REPAIR/INVESTIGATION	0	0	0	0	0	0	0	0	0	0	0	0
RMTR	READ METER SERVICES	0	0	0	0	0	0	0	0	0	0	0	0
RPST	REPAIR STREET	0	0	0	0	0	0	0	0	0	0	0	0
RRMT	RE-READ METER	0	0	0	0	0	0	0	0	0	0	0	0
SLM	SEWER LATERAL MAIN	0	0	0	0	0	0	0	0	0	0	0	0
SVLK	SERVICE LEAK	0	0	0	0	0	0	0	0	0	0	0	0
TOFF	TURN WATER OFF	0	0	0	0	0	0	0	0	0	0	0	0
TONN	TURN WATER ON	0	0	0	0	0	0	0	0	0	0	0	0
Totals		0	0	0	0	0	0	0	0	0	0	0	0

*Designated Types

Aqua America Aged Service Orders*
93 - Sunny Hills/Washington
Status: O - Needs to be Worked in the Field
Run Date: 8/27/2010

Service Order Type	Service Order Description	1-7	8-14	15-21	22-28	29-60	61-90	91-120	121-200	201-300	301-400	>400	TOTAL
BENN	BENCH TEST	0	0	0	0	0	0	0	0	0	0	0	0
CURB	CURB BOX MAINTENANCE - MISCELLANEOUS	0	0	0	0	0	0	0	0	0	0	0	0
HIC	HIGH CONSUMPTION	0	0	0	0	0	0	0	0	0	0	0	0
LABC	LAB - CHEMICAL CONTENT	0	0	0	0	0	0	0	0	0	0	0	0
LABD	LAB - DISCOLORED WATER	0	0	0	0	0	0	0	0	0	0	0	0
LABT	LAB - TASTE & ODOR	0	0	0	0	0	0	0	0	0	0	0	0
MSMT	MISCELLANEOUS MAINTENANCE	0	0	0	0	0	0	0	0	0	0	0	0
PRES	PRESSURE - DISTRIBUTION	0	0	0	0	0	0	0	0	0	0	0	0
REPR	REPAIR/INVESTIGATION	0	0	0	0	0	0	0	0	0	0	0	0
RMTR	READ METER SERVICES	0	0	0	0	0	0	0	0	0	0	0	0
RPST	REPAIR STREET	0	0	0	0	0	0	0	0	0	0	0	0
RRMT	RE-READ METER	0	0	0	0	0	0	0	0	0	0	0	0
SLM	SEWER LATERAL MAIN	1	0	0	0	0	0	0	0	0	0	0	1
SVLK	SERVICE LEAK	0	0	0	0	0	0	0	0	0	0	0	0
TOFF	TURN WATER OFF	0	0	0	0	0	0	0	0	0	0	0	0
TONN	TURN WATER ON	0	0	0	0	0	0	0	0	0	0	0	0
Totals		1	0	0	0	0	0	0	0	0	0	0	1

*Designated Types

Aqua America Aged Service Orders*
94 - Palm Terrace
Status: O - Needs to be Worked in the Field
Run Date: 8/27/2010

Service Order Type	Service Order Description	1-7	8-14	15-21	22-28	29-60	61-90	91-120	121-200	201-300	301-400	>400	TOTAL
BENN	BENCH TEST	0	0	0	0	0	0	0	0	0	0	0	0
CURB	CURB BOX MAINTENANCE - MISCELLANEOUS	0	0	0	0	0	0	0	0	0	0	0	0
HIC	HIGH CONSUMPTION	0	0	0	0	0	0	0	0	0	0	0	0
LABC	LAB - CHEMICAL CONTENT	0	0	0	0	0	0	0	0	0	0	0	0
LABD	LAB - DISCOLORED WATER	0	0	0	0	0	0	0	0	0	0	0	0
LABT	LAB - TASTE & ODOR	0	0	0	0	0	0	0	0	0	0	0	0
MSMT	MISCELLANEOUS MAINTENANCE	0	0	0	0	0	0	0	0	0	0	0	0
PRES	PRESSURE - DISTRIBUTION	0	0	0	0	0	0	0	0	0	0	0	0
REPR	REPAIR/INVESTIGATION	0	0	0	0	0	0	0	0	0	0	0	0
RMTR	READ METER SERVICES	0	0	0	0	0	0	0	0	0	0	0	0
RPST	REPAIR STREET	0	0	0	0	0	0	0	0	0	0	0	0
RRMT	RE-READ METER	0	0	0	0	0	0	0	0	0	0	0	0
SLM	SEWER LATERAL MAIN	0	0	0	0	0	0	0	0	0	0	0	0
SVLK	SERVICE LEAK	0	0	0	0	0	0	0	0	0	0	0	0
TOFF	TURN WATER OFF	0	0	0	0	0	0	0	0	0	0	0	0
TONN	TURN WATER ON	0	0	0	0	0	0	0	0	0	0	0	0
Totals		0	0	0	0	0	0	0	0	0	0	0	0

*Designated Types

Aqua America Aged Service Orders*
95 - Sebring
Status: O - Needs to be Worked in the Field
Run Date: 8/27/2010

Service Order Type	Service Order Description	1-7	8-14	15-21	22-28	29-60	61-90	91-120	121-200	201-300	301-400	>400	TOTAL
BENN	BENCH TEST	0	0	0	0	0	0	0	0	0	0	0	0
CURB	CURB BOX MAINTENANCE - MISCELLANEOUS	0	0	0	0	0	0	0	0	0	0	0	0
HIC	HIGH CONSUMPTION	0	0	0	0	0	0	0	0	0	0	0	0
LABC	LAB - CHEMICAL CONTENT	0	0	0	0	0	0	0	0	0	0	0	0
LABD	LAB - DISCOLORED WATER	0	0	0	0	0	0	0	0	0	0	0	0
LABT	LAB - TASTE & ODOR	0	0	0	0	0	0	0	0	0	0	0	0
MSMT	MISCELLANEOUS MAINTENANCE	0	0	0	0	0	0	0	0	0	0	0	0
PRES	PRESSURE - DISTRIBUTION	0	0	0	0	0	0	0	0	0	0	0	0
REPR	REPAIR/INVESTIGATION	1	0	0	0	0	0	0	0	0	0	0	1
RMTR	READ METER SERVICES	0	0	0	0	0	0	0	0	0	0	0	0
RPST	REPAIR STREET	0	0	0	0	0	0	0	0	0	0	0	0
RRMT	RE-READ METER	0	0	0	0	0	0	0	0	0	0	0	0
SLM	SEWER LATERAL MAIN	0	0	0	0	0	0	0	0	0	0	0	0
SVLK	SERVICE LEAK	0	0	0	0	0	0	0	0	0	0	0	0
TOFF	TURN WATER OFF	0	0	0	0	0	0	0	0	0	0	0	0
TONN	TURN WATER ON	0	0	0	0	0	0	0	0	0	0	0	0
Totals		1	0	0	0	0	0	0	0	0	0	0	1

*Designated Types

Aqua America Aged Service Orders*
NO - No Orders
Status: O - Needs to be Worked in the Field
Run Date: 8/27/2010

Service Order Type	Service Order Description	1-7	8-14	15-21	22-28	29-60	61-90	91-120	121-200	201-300	301-400	>400	TOTAL
BENN	BENCH TEST	0	0	0	0	0	0	0	0	0	0	0	0
CURB	CURB BOX MAINTENANCE - MISCELLANEOUS	0	0	0	0	0	0	0	0	0	0	0	0
HIC	HIGH CONSUMPTION	0	0	0	0	0	0	0	0	0	0	0	0
LABC	LAB - CHEMICAL CONTENT	0	0	0	0	0	0	0	0	0	0	0	0
LABD	LAB - DISCOLORED WATER	0	0	0	0	0	0	0	0	0	0	0	0
LABT	LAB - TASTE & ODOR	0	0	0	0	0	0	0	0	0	0	0	0
MSMT	MISCELLANEOUS MAINTENANCE	0	0	0	0	0	0	0	0	0	0	0	0
PRES	PRESSURE - DISTRIBUTION	0	0	0	0	0	0	0	0	0	0	0	0
REPR	REPAIR/INVESTIGATION	0	0	0	0	0	0	0	0	0	0	0	0
RMTR	READ METER SERVICES	0	0	0	0	0	0	0	0	0	0	0	0
RPST	REPAIR STREET	0	0	0	0	0	0	0	0	0	0	0	0
RRMT	RE-READ METER	0	0	0	0	0	0	0	0	0	0	0	0
SLM	SEWER LATERAL MAIN	0	0	0	0	0	0	0	0	0	0	0	0
SVLK	SERVICE LEAK	0	0	0	0	0	0	0	0	0	0	0	0
TOFF	TURN WATER OFF	0	0	0	0	0	0	0	0	0	0	0	0
TONN	TURN WATER ON	0	0	0	0	0	0	0	0	0	0	0	0
Totals		0	0	0	0	0	0	0	0	0	0	0	0

*Designated Types

Aqua Utilities Florida Inc.

Docket No. 080121-WS

Florida Public Service Commission

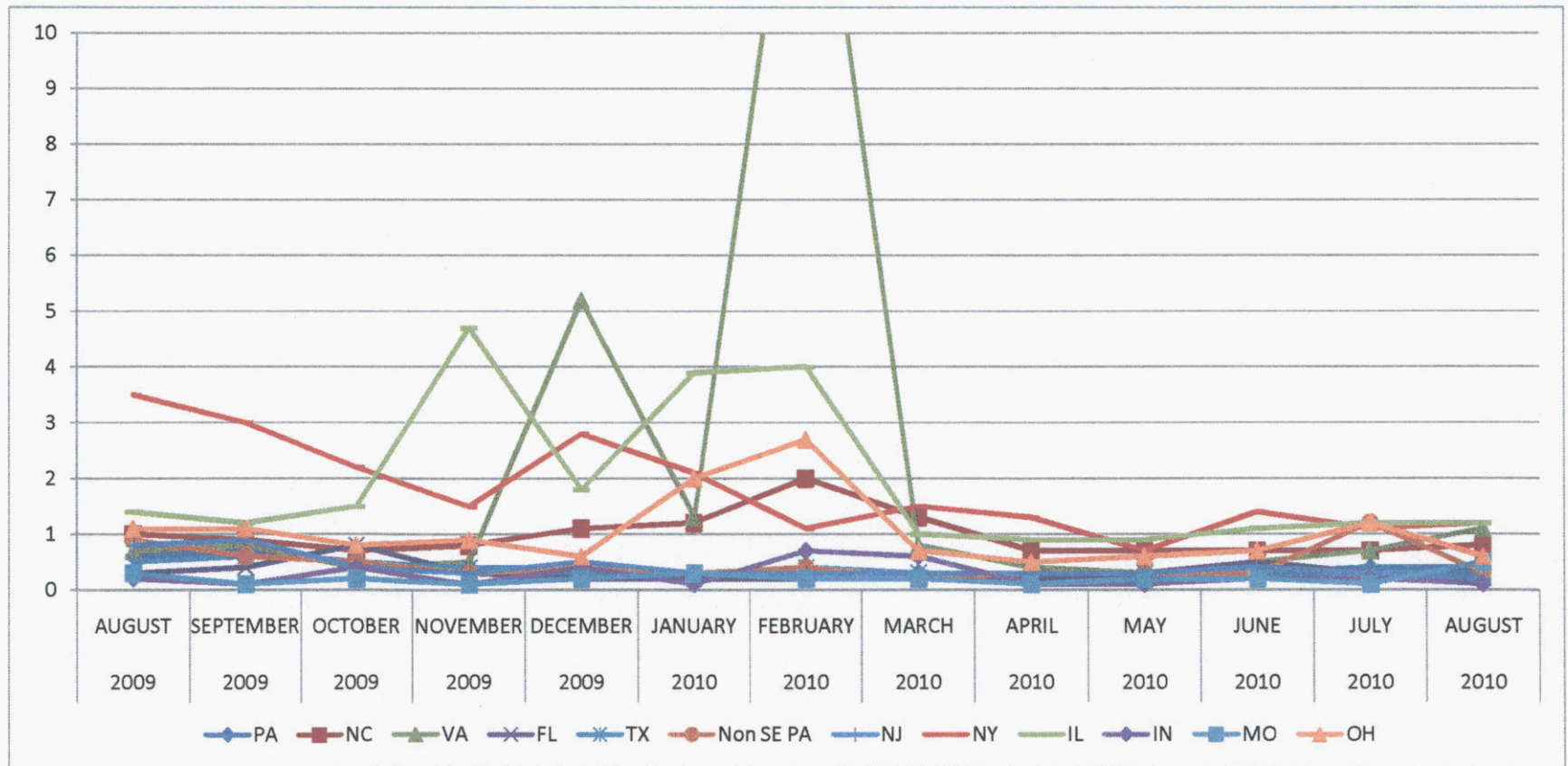
Phase II Monitoring

Estimated Read Report

August 2010

ESTIMATION RATE BY STATE

Year Month	PA	NC	VA	FL	TX	Non SE PA	NJ	NY	IL	IN	MO	OH
2009 AUGUST	0.6	1	0.7	0.3	0.5	0.9	0.8	3.5	1.4	0.2	0.3	1.1
2009 SEPTEMBER	0.7	0.9	0.8	0.4	0.6	0.6	0.9	3	1.2	0.1	0.1	1.1
2009 OCTOBER	0.5	0.7	0.4	0.8	0.5	0.5	0.4	2.2	1.5	0.4	0.2	0.8
2009 NOVEMBER	0.4	0.8	0.5	0.3	0.4	0.3	0.3	1.5	4.7	0.1	0.1	0.9
2009 DECEMBER	0.4	1.1	5.2	0.2	0.3	0.4	0.5	2.8	1.8	0.4	0.2	0.6
2010 JANUARY	0.3	1.2	1.3	0.2	0.3	0.3	0.3	2.1	3.9	0.1	0.3	2
2010 FEBRUARY	0.4	2	15.4	0.2	0.4	0.4	0.3	1.1	4	0.7	0.2	2.7
2010 MARCH	0.3	1.3	0.8	0.3	0.3	0.2	0.3	1.5	1	0.6	0.2	0.7
2010 APRIL	0.3	0.7	0.4	0.2	0.3	0.3	0.3	1.3	0.9	0.1	0.1	0.5
2010 MAY	0.3	0.7	0.3	0.3	0.3	0.3	0.3	0.7	0.9	0.1	0.2	0.6
2010 JUNE	0.3	0.7	0.5	0.5	0.3	0.3	0.4	1.4	1.1	0.2	0.2	0.7
2010 JULY	0.4	0.7	0.7	0.3	0.3	1.2	0.3	1.1	1.2	0.2	0.1	1.2
2010 AUGUST	0.4	0.8	1.1	0.2	0.3	0.3	0.2	1.2	1.2	0.1	0.5	0.6



Chuluota WTP – Aqua has been working very closely with the FDEP to resolve issues stemming from TOCs and hydrogen sulfides, both of which are indigenous in the local water table. In 2009 we piloted two treatment systems and ultimately we selected an ion exchange system manufactured by Tonka Water Systems. To expedite the construction and meet the consent order timelines, Aqua divided the work into two phases. As part of Phase 1, Aqua modified the pipe configuration, installed new pumps, and placed into service a 50,000 gallon ground storage tank. The project was designed to add chlorine into the smaller storage tank, reducing the time it has to react with the organics in the water, before ammonia is added thereby reducing the formation of TTHMs in the distribution system. Phase 1 was placed in service at the end of February 2010. Phase 2 consisted of the installation of the ion exchange treatment units and the raw water pipeline from plant 1 to plant 2. Construction began in March 2010. In accordance with the consent order, construction was completed with FDEP clearance received June 24, 2010 and the new treatment facilities have been placed into service. The sample results to date have been very favorable and we expect to close the consent order by December 1, 2010.

Tomoka View Estates WTP – Aqua signed a consent order for this system on December 18, 2009. Aqua completed construction of the chloramination system which was placed in service in mid December, 2009. The results from samples taken from December 2009 to June 2010 were all well below 80 and the RAA for the 2nd quarter of 2010 was 40.7 ug/L, which is below the relevant MCL RAA of 80 ug/L. We are awaiting a letter from the FDOH stating we can return to annual monitoring for TTHMs. Aqua also identified the need to implement a flushing program for the distribution system. In 2009 engineering and operations evaluated the distribution system and determined it lacked valves in key locations so the system could be directionally flushed. A contractor was hired to install these valves, flushing hydrants and upsize the lines to existing flushing hydrants to increase flows. A comprehensive flushing plan was prepared with instructions for operating valves to assure the entire system would be directionally flushed. The company has a dedicated compliance officer that has met with the operators of Tomoka View Estates and provided a training session to implement the program. Aqua has fulfilled the compliance deadlines in the consent order.

Village Water WWTF – Aqua is completing the requested study on increasing effluent disposal capacity. Thus far it has identified four options. First, Aqua has approached the City of Lakeland to discuss an interconnection into its collection system. Initially, the City preliminarily advised that it does not have the capacity in either its collection system or plant to handle Aqua's flows. Second, Aqua is investigating the purchase or lease of a spray field on adjacent property. Third, Aqua investigated a spray field on adjacent Osceola Parkway to irrigate that right-of-way. This does not appear to be a workable option with the Parkway Authority. Fourth, Aqua investigated the conversion of the WWTP to public access reuse treatment facility, and had preliminary discussions with an organic farmer who was interested in using the flows to irrigate his crops. This option did not work out to be practical due to the size of the facility and the needs of the farmer. Aqua has recently met with Polk County to determine if they were interested in our raw or treated water and they were not. We are contacting the City of Lakeland again to see if the TEECO agreement is going to be a viable option for us. Aqua has installed monitoring wells around the percolation ponds and is monitoring in accordance with Consent Order. To date, that monitoring has revealed no adverse impacts.

Jasmine Lakes WWTF – A warning letter was issued by the FDEP asserting that the percolation ponds in this system needed to comply with new FDEP rules. Aqua had discussions with the FDEP and Office of General Counsel (OGC) regarding whether the ponds are to be grandfathered and thus subject to regulations existing at the time the ponds were placed into service. The OGC instructed Aqua to resubmit the permit application with the grandfather language included. Aqua submitted the permit application and anticipates that this issue will be resolved upon receipt of the permit modification from FDEP. A draft permit was issued, however it contained several conditions that do not apply to the Jasmine Lakes WWTF. Aqua had another meeting with the Department. The Department currently is reviewing Aqua's concerns

Palm Terrace WWTF – A warning letter was issued by the FDEP asserting that the percolation ponds in this system needed to comply with new FDEP rules. Since then, however, DEP issued a 5 year permit renewal for operating the WWTP, which includes language indicating that this system would be grandfathered thus remedying the issue identified in the warning letter. As part of the permit conditions, Aqua installed a cross-over pipe between ponds 1 & 2. The two percolation ponds and the spray field are permitted and designed to take the permitted flows from this facility.

Sunny Hills WTP – A warning letter was issued by the FDEP regarding tank inspection and storage capacity. Aqua retained the services of Hatch Mott McDonald Consulting Engineers to inspect the tanks for compliance and evaluate the current ground storage capacity. Hatch Mott is also preparing a design and permit package to interconnect Well 1 and Well 4 with the storage tank so in the event either well is out of service the storage tank will remain in service thus continuing to improve reliability to the customer. Hatch Mott has conducted a pilot sequestering study to determine whether the addition of a sequestering agent to the treatment process will reduce customer complaints of iron in their water. The study proved that levels of iron in the water can be sequestered so Hatch Mott prepared a design and permit package for FDEP's approval. Aqua received clearance from FDEP on June 21, 2010.

Peace River Heights WTP – Aqua met with FDEP staff on November 9, 2009 to discuss the warning letter regarding an alleged gross alpha exceedance. Since that meeting, Aqua has sent split samples to several independent laboratories and had Wisconsin State Laboratory for Hygiene conduct a very thorough analysis of samples from this system. Aqua's testing conducted by independent laboratories demonstrates that there are no exceedances at the WTP. Aqua has been working with Water Remediation Technology (WRT) to evaluate possible cost effective treatment options. Aqua signed a consent order from FDEP on June 24, 2010. Aqua will conduct radiological sampling by monthly for 24 months. In addition to the consent order, Aqua is running a small scale WRT pilot unit to evaluate future treatment should the need arise. The pilot plant has been performing very well. Aqua recently monitored for Gross Alpha and the results were very close to the MCL. Aqua is moving forward with initiating preliminary design. That has been awarded to MBV Engineers

South Seas WWTF – Aqua received a warning letter on February 25, 2010 regarding a leak at the facility's reject storage tanks, which Aqua had previously reported to the FDEP. Prior to detecting the leak, Aqua had already contacted contractors to evaluate the reject storage tank. When the contractor visited the site to evaluate tanks, the facility had a reject event and filled the tanks. One of the tanks had a failure which resulted in a spill. Aqua immediately began pumping the reject water from this tank as well as the effluent from the facility and hauling it to the City of Sanibel. Aqua had a contractor make a repair to the tank and have initiated plans to replace the tanks. The tanks at South Seas have had additional failures sense the last update to the PSC. Aqua is moving forward with installation of 4 new like for like storage tanks. The project has been awarded to Aqua Store.

Other: As of this report, Aqua has no Notices Of Violations (NOVs) from the FDEP or FDOH. Aqua has no outstanding compliance issues with any of the water management districts.