



John T. Butler
Assistant General Counsel – Regulatory
Florida Power & Light Company
700 Universe Boulevard
Juno Beach, FL 33408-0420
(561) 304-5639
(561) 691-7135 (Facsimile)
John.Butler@fpl.com

September 15, 2014

-VIA ELECTRONIC FILING -

Ms. Carlotta S. Stauffer
Commission Clerk
Florida Public Service Commission
2540 Shumard Oak Blvd.
Tallahassee, FL 32399-0850

Re: Docket No. 140001-EI

Dear Ms. Stauffer:

I enclose for electronic filing in the above docket (i) Florida Power & Light Company's ("FPL") Revised Petition for Approval of its Generating Performance Incentive Factor ("GPIF") Targets for January 2015 through December 2015 and (ii) the prepared revised testimony and exhibits of FPL witness J. Carine Bullock.

FPL's revised filing addresses a correction to properly reflect the impact of the Gas Reserves Project on the 2015 projected fuel costs, which had been overstated in the original August 22, 2014 filing. The impact of this correction on FPL's GPIF 2015 filing is minor and only slightly changes information on Exhibit JCB-2. Nonetheless, for the convenience of all parties FPL is filing a complete revised package of the 2015 GPIF Targets filing.

If there are any questions regarding this transmittal, please contact me at (561) 304-5639.

Sincerely,

s/ John T. Butler
John T. Butler

Enclosures

cc: Counsel for Parties of Record (w/encl.)

BEFORE THE FLORIDA PUBLIC SERVICE COMMISSION

Fuel and Purchase Power Cost Recovery
Clause with Generating Performance Incentive
Factor

Docket No: 140001-EI

Filed: September 15, 2014

**REVISED PETITION OF FLORIDA POWER & LIGHT COMPANY
FOR APPROVAL OF ITS GENERATING PERFORMANCE
INCENTIVE FACTOR (GPIF) TARGETS
FOR JANUARY 2015 THROUGH DECEMBER 2015**

Florida Power & Light Company (“FPL”), pursuant to Order No. 9273 in Docket No. 74680-CI, Order No. 10093 in Docket No. 810001-EU, and Commission Directives of April 24 and April 30, 1980, hereby files this revised petition, which respectfully requests the Commission to approve the proposed Generation Performance Incentive Factor (“GPIF”) Targets for the period January 2015 through December 2015 of 86.5% for the weighted system average equivalent availability and 8,449 Btu/kWh for the average net operating heat rate. In support of this Petition, FPL incorporates herein the revised, prepared written testimony and exhibits of FPL witness J. Carine Bullock and states as follows:

1. The GPIF targets for the period January 2015 through December 2015 are calculated in accordance with the methodology contained in the Generating Performance Incentive Factor Implementation Manual adopted by Order No. 10168 in Docket No. 810001-EU, as revised by Order No. 10912 in Docket No. 820001-EU. The 2015 GPIF targets are presented in Ms. Bullock’s Exhibits JCB-2 and JCB-3. Because the due date for FPL’s 2015 Projection Filing (September 15, 2014) is prior to the Commission’s decision on the Woodford Gas Reserves Project, FPL is filing two sets of GPIF exhibits. Exhibit JCB-2 assumes the

Woodford Gas Reserves Project is approved and implemented, while Exhibit JCB-3 assumes it is not approved.

WHEREFORE, FPL respectfully requests this Commission to approve the proposed GPIF Targets for the period January 2015 through December 2015 of 86.5% for the weighted system average equivalent availability and 8,449 Btu/kWh for the average net operating heat rate.

Respectfully submitted,

R. Wade Litchfield, Esq.
Vice President and General Counsel
John T. Butler, Esq.
Assistant General Counsel – Regulatory
Florida Power & Light Company
700 Universe Boulevard
Juno Beach, FL 33408
Telephone: (561) 304-5639
Facsimile: (561) 691-7135

By: s/ John T. Butler
John T. Butler
Florida Bar No. 283479

CERTIFICATE OF SERVICE
Docket No. 140001-EI

I HEREBY CERTIFY that a true and correct copy of the foregoing has been furnished by electronic service on this 15th day of September, 2014 to the following:

Martha F. Barrera, Esq.
Division of Legal Services
Florida Public Service Commission
2540 Shumard Oak Blvd.
Tallahassee, Florida 32399-0850
mbarrera@psc.state.fl.us

Jon C. Moyle, Esq.
Moyle Law Firm, P.A.
Attorneys for FIPUG
118 N. Gadsden St.
Tallahassee, Florida 32301
jmoyle@moylelaw.com

Beth Keating, Esq.
Gunster Law Firm
Attorneys for FPUC
215 South Monroe St., Suite 601
Tallahassee, Florida 32301-1804
bkeating@gunster.com

John T. Burnett, Esq.
Dianne M. Triplett, Esq.
Attorneys for DEF
299 First Avenue North
St. Petersburg, Florida 33701
john.burnett@duke-energy.com
dianne.triplett@duke-energy.com

James D. Beasley, Esq.
J. Jeffrey Wahlen, Esq.
Ashley M. Daniels, Esq.
Ausley & McMullen
Attorneys for Tampa Electric
P.O. Box 391
Tallahassee, Florida 32302
jbeasley@ausley.com
jwahlen@ausley.com
adaniels@ausley.com

Jeffrey A. Stone, Esq.
Russell A. Badders, Esq.
Steven R. Griffin, Esq.
Beggs & Lane
Attorneys for Gulf Power
P.O. Box 12950
Pensacola, Florida 32591-2950
jas@beggslane.com
rab@beggslane.com
srg@beggslane.com

Robert Scheffel Wright, Esq.
John T. LaVia, III, Esq.
Gardner, Bist, Wiener, et al
Attorneys for Florida Retail Federation
1300 Thomaswood Drive
Tallahassee, Florida 32308
schef@gbwlegal.com
jlavia@gbwlegal.com

James W. Brew, Esq.
F. Alvin Taylor, Esq.
Attorney for White Springs
Brickfield, Burchette, Ritts & Stone, P.C
1025 Thomas Jefferson Street, NW
Eighth Floor, West Tower
Washington, DC 20007-5201
jbrew@bbrslaw.com
ataylor@bbrslaw.com

J. R. Kelly, Esq.
Patricia Christensen, Esq.
Charles Rehwinkel, Esq.
Joseph A. McGlothlin, Esq.
Erik L. Sayler, Esq.
Office of Public Counsel
c/o The Florida Legislature
111 West Madison Street, Room 812
Tallahassee, Florida 32399
kelly.jr@leg.state.fl.us
christensen.patty@leg.state.fl.us
rehwinkel.charles@leg.state.fl.us
mcglathlin.joseph@leg.state.fl.us
sayler.erik@leg.state.fl.us

Michael Barrett
Division of Economic Regulation
Florida Public Service Commission
2540 Shumard Oak Blvd.
Tallahassee, Florida 32399-0850
mbarrett@psc.state.fl.us

By: s/ John T. Butler
John T. Butler
Florida Bar No. 283479

**BEFORE THE FLORIDA
PUBLIC SERVICE COMMISSION**

**DOCKET NO. 140001-EI
FLORIDA POWER & LIGHT COMPANY**

SEPTEMBER 15, 2014

**GENERATING PERFORMANCE INCENTIVE FACTOR
TARGETS FOR
JANUARY 2015 THROUGH DECEMBER 2015**

TESTIMONY & EXHIBITS OF:

J. CARINE BULLOCK

1
2
3
4
5
6
7
8
9
10
11
12
13
14
15
16
17
18
19
20
21

BEFORE THE FLORIDA PUBLIC SERVICE COMMISSION

FLORIDA POWER & LIGHT COMPANY

TESTIMONY OF J. CARINE BULLOCK

DOCKET NO. 140001-EI

SEPTEMBER 15, 2014

Q. Please state your name and business address.

A. My name is J. Carine Bullock, and my business address is 700 Universe Boulevard, Juno Beach, Florida 33408.

Q. By whom are you currently employed and in what capacity?

A. I am employed by Florida Power & Light Company (FPL) and I am the Vice President of Production Assurance and Business Services in the Power Generation Division of FPL, where I am responsible for providing production standardization and commercial management of FPL’s fossil generating assets.

Q. What is the purpose of your testimony?

A. The purpose of my testimony is to present FPL’s generating unit equivalent availability factor (EAF) targets and average net operating heat rate (ANOHR) targets used in determining the Generating Performance Incentive Factor (GPIF) for the period January through December, 2015.

Q. Have you prepared, or caused to have prepared under your direction, supervision, or control, any exhibits in this proceeding?

1 A. Yes, I am sponsoring exhibits JCB-2 and JCB-3. The first page of these exhibits
2 is an index to the contents of the corresponding exhibit. All other pages are
3 numbered according to the GPIF Manual as approved by the Commission.

4 **Q. How does FPL's 2015 GPIF Projection reflect its request in this docket for**
5 **Commission approval of the Woodford Gas Reserves Project?**

6 A. Because the due date for FPL's 2015 Projection Filing (August 22, 2014) is prior
7 to the Commission's decision on the Woodford Gas Reserves Project, FPL has
8 filed two sets of GPIF exhibits. One set (JCB-2) assumes the Woodford Gas
9 Reserves Project is approved and implemented, while the other set (JCB-3)
10 assumes it is not approved. Unless otherwise indicated, all references in my
11 testimony address JCB-2.

12 **Q. Please summarize the 2015 system targets for EAF and ANOHR for the units**
13 **to be considered in establishing the GPIF for FPL.**

14 A. For the period of January through December, 2015, FPL projects a weighted
15 system equivalent planned outage factor of 6.5% and a weighted system
16 equivalent unplanned outage factor of 7.0%, which yield a weighted system
17 equivalent availability target of 86.5%. The targets for this period reflect planned
18 refuelings for St. Lucie Unit 1, St. Lucie Unit 2 and Turkey Point Unit 3. FPL
19 also projects a weighted system ANOHR target of 8,449 Btu/kWh for the period
20 January through December, 2015. As discussed later in my testimony, these
21 targets represent fair and reasonable values. Therefore, FPL requests that the
22 targets for these performance indicators be approved by the Commission.

1 **Q. Have you established individual target levels of performance for the units to**
2 **be considered in establishing the GPIF for FPL?**

3 A. Yes, I have. Exhibits JCB-2 and JCB-3, pages 6 and 7, contain the information
4 summarizing the targets and ranges for EAF and ANOHR for the eleven
5 generating units that FPL proposes to be considered as GPIF units for the period
6 January through December, 2015. All of these targets have been derived utilizing
7 the accepted methodologies adopted in the GPIF Manual.

8 **Q. Please summarize FPL's methodology for determining equivalent availability**
9 **targets.**

10 A. The GPIF Manual requires that the EAF target for each unit be determined as the
11 difference between 100% and the sum of the equivalent planned outage factor
12 (EPOF) and the equivalent unplanned outage factor (EUOF). The EPOF for each
13 unit is determined by the length of the planned outage, if any, scheduled for the
14 projected period. The EUOF is determined by the sum of the historical average
15 equivalent forced outage factor (EFOF) and the equivalent maintenance outage
16 factor (EMOF). The EUOF is then adjusted to reflect recent or projected unit
17 overhauls following the projection period.

18 **Q. Please summarize FPL's methodology for determining ANOHR targets.**

19 A. To develop the ANOHR targets, historic ANOHR vs. unit net output factor curves
20 are developed for each GPIF unit. The historic data is analyzed for any unusual
21 operating conditions and changes in equipment that affect the predicted heat rate.
22 A regression equation is calculated and a statistical analysis of the historic
23 ANOHR variance with respect to the best fit curve is also performed to identify

1 unusual observations. The resulting equation is used to project ANOHR for the
2 unit using the net output factor from the production costing simulation program,
3 POWRSYM. This projected ANOHR value is then used in the GPIF tables and in
4 the calculations to determine the possible fuel savings or losses due to
5 improvements or degradations in heat rate performance. This process is
6 consistent with the GPIF Manual.

7 **Q. How did you select the units to be considered when establishing the GPIF for**
8 **FPL?**

9 A. In accordance with the GPIF Manual, the GPIF units selected are responsible for
10 no less than 80% of the estimated system net generation. The estimated net
11 generation for each unit is taken from the POWRSYM model, which forms the
12 basis for the projected levelized fuel cost recovery factor for the period. In this
13 case, the eleven units which FPL proposes to use for the period January through
14 December, 2015 represent the top 83.2% of the total forecasted system net
15 generation for this period excluding the Cape Canaveral Energy Center and
16 Riviera Energy Center. These units came into service in 2013 and 2014,
17 respectively, and were excluded from the GPIF calculation because there is
18 insufficient historical data to include them. Consistent with the GPIF Manual,
19 these units will be considered in the GPIF calculations once FPL has enough
20 operating history to use in projecting future performance.

21 **Q. Do FPL's 2015 EAF and ANOHR performance targets represent reasonable**
22 **levels of generation availability and efficiency?**

23 A. Yes, they do.

1 **Q. Does this conclude your testimony?**

2 A. Yes, it does.

WITNESS: J. CARINE BULLOCK

GENERATING PERFORMANCE INCENTIVE FACTOR

JANUARY THROUGH DECEMBER, 2015

SEPTEMBER 15, 2014

JCB-2

DOCKET NO. 140001-EI

FPL Witness: J. Carine Bullock

Exhibit No.: _____

Pages 1 - 32

EXHIBIT INDEX**FLORIDA POWER & LIGHT COMPANY****JANUARY THROUGH DECEMBER, 2015**

<u>EXHIBIT</u>	<u>PAGE NUMBER</u>	<u>TITLE</u>
JCB-2	7.201.001	Exhibit Index
	7.201.002	Projected System Generation
	7.201.003	Units Used to Determine GPIF
	7.201.004	GPIF Reward/Penalty Table (Estimated)
	7.201.005	GPIF Calculation of Maximum Allowed Incentive Dollars (Estimated)
	7.201.006 and 7.201.007	GPIF Target and Range Summary
	7.201.008	GPIF Projected Unit Heat Rate Equations
	7.201.009	Derivation of Weighting Factors
	7.201.010 - 7.201.020	Estimated Unit Performance Data
	7.201.021 - 7.201.031	Unit FOF and MOF vs Time Graphs
	7.201.032	Planned Outages Schedule (Estimated)

**Projected System Generation
January Through December, 2015**

<u>Name</u>	<u>Capacity (MW)</u>	<u>Service Hours</u>	<u>Net Output MWH</u>	<u>NOF %</u>	<u>% of Total Output</u>	<u>Cumulative % of Total Output</u>	<u>Production Cost (\$000)</u>
PRV5	1,344	8,582	9,969,840	95.9	8.7	8.7	257,000
CCEC	1,355	8,555	9,781,200	94.5	8.5	17.2	260,460
WEST COUNTY 1	1,208	8,392	8,992,830	91.9	7.8	25.0	243,560
WEST COUNTY 3	1,207	7,749	8,056,100	89.2	7.0	32.0	217,890
WEST COUNTY 2	1,202	7,644	7,917,560	89.4	6.9	38.9	214,150
ST. LUCIE 1	1,003	7,968	7,694,320	98.4	6.7	45.6	51,840
MARTIN 8	1,147	7,748	7,445,120	86.5	6.5	52.1	201,690
TURKEY POINT 4	848	8,760	7,107,580	98.8	6.2	58.3	51,380
TURKEY POINT 5	1,166	6,328	6,621,760	92.0	5.8	64.0	133,750
ST. LUCIE 2	860	7,992	6,616,100	98.6	5.8	69.8	43,280
TURKEY POINT 3	839	8,040	6,445,200	98.8	5.6	75.4	48,080
FT. MYERS 2	1,476	5,332	6,209,870	84.2	5.4	80.8	172,790
MANATEE 3	1,134	5,989	6,039,810	93.6	5.3	86.1	165,750
SCHERER 4	646	8,760	5,119,820	91.2	4.5	90.5	133,400
SANFORD 4	990	2,935	2,645,610	96.0	2.3	92.8	76,340
MARTIN 3	454	2,759	1,157,810	95.8	1.0	93.8	34,530
SANFORD 5	994	1,278	1,093,750	90.4	1.0	94.8	30,960
MARTIN 4	453	2,326	936,970	92.2	0.8	95.6	28,120
LAUDERDALE 5	442	1,799	750,100	97.2	0.7	96.3	23,030
ST JOHNS 20	128	8,760	675,720	60.7	0.6	96.8	23,980
LAUDERDALE 4	442	1,434	596,690	97.0	0.5	97.4	18,470
MARTIN 1	805	951	539,710	71.0	0.5	97.8	32,800
ST JOHNS 10	128	7,560	496,990	51.8	0.4	98.3	17,910
MARTIN 2	808	1,318	472,670	44.9	0.4	98.7	37,710
MANATEE 1	795	546	352,910	81.9	0.3	99.0	27,280
TURKEY POINT 1	380	1,066	295,200	73.1	0.3	99.2	19,940
MANATEE 2	795	379	253,140	84.7	0.2	99.5	19,150
PUTNAM 2	255	911	218,860	96.1	0.2	99.7	7,830
PUTNAM 1	251	802	188,300	95.1	0.2	99.8	6,870
FORT MYERS 3A_B	314	651	182,180	94.5	0.2	100.0	7,820
FORT MYERS 1-12	690	47	12,750	41.9	0.0	100.0	5,460
LAUDERDALE 1-24	886	29	11,420	46.9	0.0	100.0	980
EVERGLADES 1-12	443	0	0	0.0	0.0	100.0	-

Total	25,886	114,897,890	100.0	2,614,200
--------------	---------------	--------------------	--------------	------------------

**UNITS TO BE USED TO DETERMINE THE
GENERATING PERFORMANCE INCENTIVE FACTOR**

**FLORIDA POWER & LIGHT COMPANY
JANUARY THROUGH DECEMBER, 2015**

Ft. Myers 2
Manatee 3
Martin 8
St. Lucie 1
St. Lucie 2
Turkey Point 3
Turkey Point 4
Turkey Point 5
West County 1
West County 2
West County 3

GENERATING PERFORMANCE INCENTIVE FACTOR

REWARD/PENALTY TABLE (ESTIMATED)

**FLORIDA POWER & LIGHT COMPANY
JANUARY THROUGH DECEMBER, 2015**

Generating Performance Incentive Points (GPIF)	Fuel Savings/(Loss) (\$000)	Generating Performance Incentive Factor (\$000)
+ 10	115,905	55,377
+ 9	104,315	49,839
+ 8	92,724	44,301
+ 7	81,134	38,764
+ 6	69,543	33,226
+ 5	57,953	27,688
+ 4	46,362	22,151
+ 3	34,772	16,613
+ 2	23,181	11,075
+ 1	11,591	5,538
0	0	0
- 1	(11,591)	(5,538)
- 2	(23,181)	(11,075)
- 3	(34,772)	(16,613)
- 4	(46,362)	(22,151)
- 5	(57,953)	(27,688)
- 6	(69,543)	(33,226)
- 7	(81,134)	(38,764)
- 8	(92,724)	(44,301)
- 9	(104,315)	(49,839)
- 10	(115,905)	(55,377)

GENERATING PERFORMANCE INCENTIVE FACTOR

CALCULATION OF MAXIMUM ALLOWED INCENTIVE DOLLARS (ESTIMATED)

FLORIDA POWER & LIGHT COMPANY
PERIOD OF: JANUARY THROUGH DECEMBER, 2015

LINE 1	BEGINNING OF PERIOD BALANCE OF COMMON EQUITY		\$	13,528,240,111
	END OF MONTH BALANCE OF COMMON EQUITY			
LINE 2	MONTH OF JANUARY	2015	\$	14,078,494,821
LINE 3	MONTH OF FEBRUARY	2015	\$	14,172,840,706
LINE 4	MONTH OF MARCH	2015	\$	14,292,254,762
LINE 5	MONTH OF APRIL	2015	\$	14,390,099,353
LINE 6	MONTH OF MAY	2015	\$	14,562,665,397
LINE 7	MONTH OF JUNE	2015	\$	14,368,682,014
LINE 8	MONTH OF JULY	2015	\$	14,556,993,745
LINE 9	MONTH OF AUGUST	2015	\$	14,194,084,596
LINE 10	MONTH OF SEPTEMBER	2015	\$	14,297,123,292
LINE 11	MONTH OF OCTOBER	2015	\$	14,407,691,042
LINE 12	MONTH OF NOVEMBER	2015	\$	14,527,679,539
LINE 13	MONTH OF DECEMBER	2015	\$	14,618,504,697
LINE 14	AVERAGE COMMON EQUITY FOR THE PERIOD (SUMMATION OF LINE 1 THROUGH LINE 13 DIVIDED BY 13)		\$	14,307,334,929
LINE 15	25 BASIS POINTS			0.0025
LINE 16	REVENUE EXPANSION FACTOR			61.3808%
LINE 17	MAXIMUM ALLOWED INCENTIVE DOLLARS (LINE 14 TIMES LINE 15 DIVIDED BY LINE 16)		\$	58,272,843
LINE 18	JURISDICTIONAL SALES			108,216,881,593 KWH
LINE 19	TOTAL SALES			113,871,155,027 KWH
LINE 20	JURISDICTIONAL SEPARATION FACTOR (LINE 18 DIVIDED BY LINE 19)			95.03%
LINE 21	MAXIMUM ALLOWED JURISDICTIONAL INCENTIVE DOLLARS (LINE 17 TIMES LINE 20)		\$	55,376,683
LINE 22	INCENTIVE CAP (50 PERCENT OF PROJECTED FUEL SAVINGS AT 10 GPIF-POINT LEVEL FROM SHEET NO. 3.515)		\$	57,952,500
LINE 23	MAXIMUM ALLOWED GPIF REWARD (AT 10 GPIF-POINT LEVEL) (THE LESSER OF LINE 21 AND LINE 22)		\$	55,376,683

Note: Line 22 and 23 are as approved by Commission order PSC-13-0665-FOF-EI dated 12/18/13 effective 1/1/14.

GPIF TARGET AND RANGE SUMMARY

FLORIDA POWER & LIGHT COMPANY
PERIOD OF: JANUARY THROUGH DECEMBER, 2015

<u>Plant / Unit</u>	<u>Weighting Factor (%)</u>	<u>EAF Target (%)</u>	<u>EAF Range</u>		<u>Max. Fuel Savings (\$000's)</u>	<u>Max. Fuel Loss (\$000's)</u>
			<u>Max. (%)</u>	<u>Min. (%)</u>		
Ft. Myers 2	3.98	84.1	86.6	81.6	4,621	-4,621
Martin 8	4.32	84.7	87.2	82.2	5,003	-5,003
Manatee 3	3.73	90.3	92.8	87.8	4,322	-4,322
St. Lucie 1	8.89	83.5	86.5	80.5	10,302	-10,302
St. Lucie 2	7.32	84.8	87.8	81.8	8,486	-8,486
Turkey Point 3	7.30	83.2	86.2	80.2	8,459	-8,459
Turkey Point 4	8.04	93.6	96.6	90.6	9,317	-9,317
Turkey Point 5	4.77	91.1	93.6	88.6	5,530	-5,530
West County 1	4.61	89.8	92.3	87.3	5,343	-5,343
West County 2	4.91	78.8	81.8	75.8	5,692	-5,692
West County 3	3.41	90.0	92.0	88.0	3,955	-3,955
	61.28				71,030	-71,030

GPIF TARGET AND RANGE SUMMARY

FLORIDA POWER & LIGHT COMPANY
PERIOD OF: JANUARY THROUGH DECEMBER, 2015

<u>Plant / Unit</u>	<u>Weighting Factor (%)</u>	<u>ANOHR TARGET BTU/KWH</u>	<u>NOF</u>	<u>ANOHR RANGE BTU/KWH</u>		<u>Max. Fuel Savings (\$000's)</u>	<u>Max. Fuel Loss (\$000's)</u>
Ft. Myers 2	2.75	7,197	84.2	7,064	7,330	3,193	-3,193
Martin 8	3.34	6,922	86.5	6,789	7,055	3,875	-3,875
Manatee 3	2.42	6,921	93.6	6,804	7,038	2,802	-2,802
St. Lucie 1	3.73	10,405	98.4	10,277	10,533	4,324	-4,324
St. Lucie 2	3.47	10,288	98.6	10,142	10,434	4,019	-4,019
Turkey Point 3	3.89	11,143	98.8	10,972	11,314	4,506	-4,506
Turkey Point 4	4.58	11,002	98.8	10,821	11,183	5,305	-5,305
Turkey Point 5	2.47	7,011	92.0	6,861	7,161	2,862	-2,862
West County 1	4.52	6,794	91.9	6,648	6,940	5,234	-5,234
West County 2	3.77	6,866	89.4	6,726	7,006	4,367	-4,367
West County 3	3.78	6,703	89.2	6,568	6,838	4,388	-4,388
	<u>38.72</u>					<u>44,875</u>	<u>-44,875</u>

**GENERATING PERFORMANCE INCENTIVE FACTOR
PROJECTED UNIT HEAT RATE EQUATIONS
FLORIDA POWER & LIGHT COMPANY
#REF!**

<u>Plant/Unit</u>	<u>ANOHR</u>	<u>NOF</u>	<u>MW</u>	<u>ANOHR Equation</u>		<u>Bounds</u>	<u>First</u>	<u>Last</u>	<u>Exclusions</u>
				<u>a coef.</u>	<u>b coef.</u>				
Ft. Myers 2	7,197	84.2	1476	8459	-14.99	133	07-11	06-14	12/11, 9/13-11/13
Martin 8	6,922	86.5	1147	7304	-4.42	133	07-11	06-14	12/11, 2/13
Manatee 3	6,921	93.6	1134	7287	-3.91	117	07-11	06-14	8/11-9/11, 11/11, 6/13, 6/14
St. Lucie 1	10,405	98.4	1003	12884	-25.19	128	07-11	06-14	7/11-5/12, 10/13
St. Lucie 2	10,288	98.6	860	11463	-11.92	146	07-11	06-14	8/11-9/11, 4/12-12/12
Turkey Point 3	11,143	98.8	839	12226	-10.96	171	07-11	06-14	10/11-1/12, 3/12-10/12, 12/12, 5/13, 4/14, 6/14
Turkey Point 4	11,002	98.8	848	11666	-6.72	181	07-11	06-14	7/11, 7/12-9/12, 11/12-5/13, 5/14-6/14
Turkey Point 5	7,011	92.0	1166	7573	-6.11	150	07-11	06-14	2/14
West County 1	6,794	91.9	1208	7287	-5.36	146	07-11	06-14	7/13, 12/13-1/14
West County 2	6,866	89.4	1202	7275	-4.58	140	07-11	06-14	7/11, 6/13-7/13, 12/13-1/14
West County 3	6,703	89.2	1207	7421	-8.05	135	07-11	06-14	6/13-7/13, 12/13-2/14

DERIVATION OF WEIGHTING FACTORS

FLORIDA POWER & LIGHT COMPANY
PERIOD OF: JANUARY THROUGH DECEMBER, 2015

PRODUCTION COSTING SIMULATION
FUEL COST (\$000)

Unit	Performance Indicator	At Target (1)	At Maximum Improvement (2)	Savings (3)	Factor (% Of Savings)
Ft. Myers 2	EAF	2,614,200	2,609,579	4,621	3.98
Ft. Myers 2	ANOHR	2,614,200	2,611,007	3,193	2.75
Martin 8	EAF	2,614,200	2,609,197	5,003	4.32
Martin 8	ANOHR	2,614,200	2,610,325	3,875	3.34
Manatee 3	EAF	2,614,200	2,609,878	4,322	3.73
Manatee 3	ANOHR	2,614,200	2,611,398	2,802	2.42
St. Lucie 1	EAF	2,614,200	2,603,898	10,302	8.89
St. Lucie 1	ANOHR	2,614,200	2,609,876	4,324	3.73
St. Lucie 2	EAF	2,614,200	2,605,714	8,486	7.32
St. Lucie 2	ANOHR	2,614,200	2,610,181	4,019	3.47
Turkey Point 3	EAF	2,614,200	2,605,741	8,459	7.30
Turkey Point 3	ANOHR	2,614,200	2,609,694	4,506	3.89
Turkey Point 4	EAF	2,614,200	2,604,883	9,317	8.04
Turkey Point 4	ANOHR	2,614,200	2,608,895	5,305	4.58
Turkey Point 5	EAF	2,614,200	2,608,670	5,530	4.77
Turkey Point 5	ANOHR	2,614,200	2,611,338	2,862	2.47
West County 1	EAF	2,614,200	2,608,857	5,343	4.61
West County 1	ANOHR	2,614,200	2,608,966	5,234	4.52
West County 2	EAF	2,614,200	2,608,508	5,692	4.91
West County 2	ANOHR	2,614,200	2,609,833	4,367	3.77
West County 3	EAF	2,614,200	2,610,245	3,955	3.41
West County 3	ANOHR	2,614,200	2,609,812	4,388	3.78
TOTAL				115,905	100.00

(1) FUEL ADJUSTMENT - ALL UNITS PERFORMANCE AT TARGET

(2) ALL OTHER UNITS PERFORMANCE AT TARGET

(3) EXPRESSED IN REPLACEMENT ENERGY COSTS.

ESTIMATED UNIT PERFORMANCE DATA

FLORIDA POWER & LIGHT

PERIOD OF: JANUARY THROUGH DECEMBER, 2015

	Ft. Myers 2	Jan '15	Feb '15	Mar '15	Apr '15	May '15	Jun '15
1	EAF (%)	94.1	94.1	94.1	62.2	65.3	49.7
2	EPOF (%)	0.0	0.0	0.0	33.9	30.6	47.2
3	EUOF (%)	5.9	5.9	5.9	3.9	4.1	3.1
4	EUOR (%)	19.6	17.2	8.2	7.3	8.1	4.9
5	PH	744	672	744	720	744	720
6	SH	225	232	535	388	377	456
7	RSH	519	440	209	164	367	264
8	UH	0	0	0	168	0	0
9	POH	0	0	0	168	0	0
10	FOH & EFOH	17	15	17	11	12	9
11	MOH & EMOH	27	25	27	18	19	14
12	Oper Mbtu	1,952,178	1,923,447	4,779,071	3,108,695	2,492,724	2,442,423
13	Net Gen (MWH)	273,376	266,664	673,583	428,018	332,186	316,992
14	ANOHR (Btu/KWH)	7,141	7,213	7,095	7,263	7,504	7,705
15	NOF (%)	87.9	83.1	91.0	79.8	63.7	50.3
16	NSC (MW)	1,383	1,383	1,383	1,383	1,383	1,383
17	ANOHR Equation	-14.99 x NOF + 8459					

	Ft. Myers 2	Jul '15	Aug '15	Sep '15	Oct '15	Nov '15	Dec '15	Total
1	EAF (%)	79.4	94.1	94.1	94.1	94.1	94.1	84.1
2	EPOF (%)	15.6	0.0	0.0	0.0	0.0	0.0	10.6
3	EUOF (%)	5.0	5.9	5.9	5.9	5.9	5.9	5.3
4	EUOR (%)	6.1	7.9	7.6	7.3	8.5	15.7	8.7
5	PH	744	744	720	744	720	744	8,760
6	SH	611	557	565	604	501	281	5,332
7	RSH	133	187	155	140	219	463	3,260
8	UH	0	0	0	0	0	0	168
9	POH	0	0	0	0	0	0	168
10	FOH & EFOH	14	17	16	17	16	17	175
11	MOH & EMOH	23	27	27	27	27	27	289
12	Oper Mbtu	4,870,689	5,169,202	5,225,744	5,500,804	4,545,523	2,479,058	44,692,384
13	Net Gen (MWH)	669,971	735,620	743,032	778,930	643,113	348,378	6,209,863
14	ANOHR (Btu/KWH)	7,270	7,027	7,033	7,062	7,068	7,116	7,197
15	NOF (%)	79.3	95.5	95.1	93.2	92.8	89.6	84.2
16	NSC (MW)	1,383	1,383	1,383	1,383	1,383	1,383	1,383
17	ANOHR Equation	-14.99 x NOF + 8459						

ESTIMATED UNIT PERFORMANCE DATA

FLORIDA POWER & LIGHT

PERIOD OF: JANUARY THROUGH DECEMBER, 2015

Manatee 3	Jan '15	Feb '15	Mar '15	Apr '15	May '15	Jun '15
1 EAF (%)	93.0	93.0	93.0	93.0	93.0	93.0
2 EPOF (%)	0.0	0.0	0.0	0.0	0.0	0.0
3 EUOF (%)	7.0	7.0	7.0	7.0	7.0	7.0
4 EUOR (%)	15.3	11.3	8.5	9.2	10.8	8.5
5 PH	744	672	744	720	744	720
6 SH	341	415	611	549	481	592
7 RSH	403	257	133	171	263	128
8 UH	0	0	0	0	0	0
9 POH	0	0	0	0	0	0
10 FOH & EFOH	15	14	15	15	15	15
11 MOH & EMOH	37	33	37	36	37	36
12 Oper Mbtu	2,444,924	2,792,933	4,227,165	3,829,036	3,461,858	4,164,491
13 Net Gen (MWH)	353,824	402,730	610,421	553,249	501,065	601,979
14 ANOHR (Btu/KWH)	6,910	6,935	6,925	6,921	6,909	6,918
15 NOF (%)	96.3	90.0	92.7	93.5	96.6	94.3
16 NSC (MW)	1,078	1,078	1,078	1,078	1,078	1,078
17 ANOHR Equation	-3.91 x NOF + 7287					

Manatee 3	Jul '15	Aug '15	Sep '15	Oct '15	Nov '15	Dec '15	Total
1 EAF (%)	63.0	91.5	93.0	93.0	93.0	93.0	90.3
2 EPOF (%)	32.3	1.6	0.0	0.0	0.0	0.0	2.9
3 EUOF (%)	4.7	6.9	7.0	7.0	7.0	7.0	6.8
4 EUOR (%)	16.3	8.9	8.0	9.0	9.0	11.9	9.9
5 PH	744	744	720	744	720	744	8,760
6 SH	217	579	629	580	558	437	5,989
7 RSH	359	165	91	164	162	307	2603
8 UH	168	0	0	0	0	0	168
9 POH	168	0	0	0	0	0	168
10 FOH & EFOH	10	15	15	15	15	15	175
11 MOH & EMOH	25	36	36	37	36	37	420
12 Oper Mbtu	1,263,398	4,071,838	4,467,066	4,097,617	3,930,358	3,048,375	41,801,477
13 Net Gen (MWH)	180,873	588,586	646,090	592,398	568,135	440,453	6,039,803
14 ANOHR (Btu/KWH)	6,985	6,918	6,914	6,917	6,918	6,921	6,921
15 NOF (%)	77.3	94.3	95.3	94.7	94.4	93.5	93.6
16 NSC (MW)	1,078	1,078	1,078	1,078	1,078	1,078	1,078
17 ANOHR Equation	-3.91 x NOF + 7287						

ESTIMATED UNIT PERFORMANCE DATA

FLORIDA POWER & LIGHT

PERIOD OF: JANUARY THROUGH DECEMBER, 2015

	Martin 8	Jan '15	Feb '15	Mar '15	Apr '15	May '15	Jun '15
1	EAF (%)	75.9	29.6	75.9	92.3	92.3	92.3
2	EPOF (%)	17.7	67.9	17.7	0.0	0.0	0.0
3	EUOF (%)	6.4	2.5	6.4	7.7	7.7	7.7
4	EUOR (%)	10.2	10.6	7.6	7.7	7.7	7.7
5	PH	744	672	744	720	744	720
6	SH	464	158	624	720	744	720
7	RSH	280	130	120	0	0	0
8	UH	0	384	0	0	0	0
9	POH	0	384	0	0	0	0
10	FOH & EFOH	13	5	13	16	16	16
11	MOH & EMOH	34	12	34	40	41	40
12	Oper Mbtu	2,830,024	882,465	3,732,460	4,781,508	5,029,625	4,943,459
13	Net Gen (MWH)	406,905	126,319	536,119	690,670	727,350	715,510
14	ANOHR (Btu/KWH)	6,955	6,986	6,962	6,923	6,915	6,909
15	NOF (%)	78.9	72.0	77.3	86.3	88.0	89.4
16	NSC (MW)	1,111	1,111	1,111	1,111	1,111	1,111
17	ANOHR Equation	-4.42 x NOF + 7304					

	Martin 8	Jul '15	Aug '15	Sep '15	Oct '15	Nov '15	Dec '15	Total
1	EAF (%)	92.3	92.3	92.3	92.3	92.3	92.3	84.7
2	EPOF (%)	0.0	0.0	0.0	0.0	0.0	0.0	8.2
3	EUOF (%)	7.7	7.7	7.7	7.7	7.7	7.7	7.1
4	EUOR (%)	7.7	7.7	7.7	7.7	8.0	8.6	8.0
5	PH	744	744	720	744	720	744	8,760
6	SH	744	744	720	744	700	666	7,748
7	RSH	0	0	0	0	20	78	628
8	UH	0	0	0	0	0	0	384
9	POH	0	0	0	0	0	0	384
10	FOH & EFOH	16	16	16	16	16	16	175
11	MOH & EMOH	41	41	40	41	40	41	447
12	Oper Mbtu	5,143,244	5,134,705	5,006,518	5,114,428	4,704,821	4,222,682	51,535,058
13	Net Gen (MWH)	744,750	743,406	725,267	740,363	680,084	608,368	7,445,111
14	ANOHR (Btu/KWH)	6,906	6,907	6,903	6,908	6,918	6,941	6,922
15	NOF (%)	90.1	89.9	90.7	89.6	87.4	82.2	86.5
16	NSC (MW)	1,111	1,111	1,111	1,111	1,111	1,111	1,111
17	ANOHR Equation	-4.42 x NOF + 7304						

ESTIMATED UNIT PERFORMANCE DATA

FLORIDA POWER & LIGHT

PERIOD OF: JANUARY THROUGH DECEMBER, 2015

St. Lucie 1	Jan '15	Feb '15	Mar '15	Apr '15	May '15	Jun '15
1 EAF (%)	91.8	91.8	65.1	18.4	91.8	91.8
2 EPOF (%)	0.0	0.0	29.0	80.0	0.0	0.0
3 EUOF (%)	8.2	8.2	5.9	1.6	8.2	8.2
4 EUOR (%)	8.2	8.2	8.2	8.2	8.2	8.2
5 PH	744	672	744	720	744	720
6 SH	744	672	528	144	744	720
7 RSH	0	0	0	0	0	0
8 UH	0	0	216	576	0	0
9 POH	0	0	216	576	0	0
10 FOH & EFOH	35	32	25	7	35	34
11 MOH & EMOH	26	24	19	5	26	25
12 Oper Mbtu	7,547,125	6,816,773	5,356,057	1,436,269	7,420,784	7,181,399
13 Net Gen (MWH)	727,574	657,165	516,346	137,732	711,621	688,665
14 ANOHR (Btu/KWH)	10,373	10,373	10,373	10,428	10,428	10,428
15 NOF (%)	99.7	99.7	99.7	97.5	97.5	97.5
16 NSC (MW)	981	981	981	981	981	981
17 ANOHR Equation	-25.19 x NOF + 12884					

St. Lucie 1	Jul '15	Aug '15	Sep '15	Oct '15	Nov '15	Dec '15	Total
1 EAF (%)	91.8	91.8	91.8	91.8	91.8	91.8	83.5
2 EPOF (%)	0.0	0.0	0.0	0.0	0.0	0.0	9.0
3 EUOF (%)	8.2	8.2	8.2	8.2	8.2	8.2	7.5
4 EUOR (%)	8.2	8.2	8.2	8.2	8.2	8.2	8.2
5 PH	744	744	720	744	720	744	8,760
6 SH	744	744	720	744	720	744	7,968
7 RSH	0	0	0	0	0	0	0
8 UH	0	0	0	0	0	0	792
9 POH	0	0	0	0	0	0	792
10 FOH & EFOH	35	35	34	35	34	35	377
11 MOH & EMOH	26	26	25	26	25	26	280
12 Oper Mbtu	7,420,784	7,420,784	7,181,399	7,420,784	7,303,671	7,547,125	80,059,285
13 Net Gen (MWH)	711,621	711,621	688,665	711,621	704,104	727,574	7,694,309
14 ANOHR (Btu/KWH)	10,428	10,428	10,428	10,428	10,373	10,373	10,405
15 NOF (%)	97.5	97.5	97.5	97.5	99.7	99.7	98.4
16 NSC (MW)	981	981	981	981	981	981	981
17 ANOHR Equation	-25.19 x NOF + 12884						

ESTIMATED UNIT PERFORMANCE DATA

FLORIDA POWER & LIGHT

PERIOD OF: JANUARY THROUGH DECEMBER, 2015

St. Lucie 2	Jan '15	Feb '15	Mar '15	Apr '15	May '15	Jun '15
1 EAF (%)	93.0	93.0	93.0	93.0	93.0	93.0
2 EPOF (%)	0.0	0.0	0.0	0.0	0.0	0.0
3 EUOF (%)	7.0	7.0	7.0	7.0	7.0	7.0
4 EUOR (%)	7.0	7.0	7.0	7.0	7.0	7.0
5 PH	744	672	744	720	744	720
6 SH	744	672	744	720	744	720
7 RSH	0	0	0	0	0	0
8 UH	0	0	0	0	0	0
9 POH	0	0	0	0	0	0
10 FOH & EFOH	26	24	26	25	26	25
11 MOH & EMOH	26	24	26	25	26	25
12 Oper Mbtu	6,408,749	5,788,548	6,408,749	6,074,263	6,276,729	6,074,263
13 Net Gen (MWH)	623,844	563,472	623,844	589,677	609,332	589,677
14 ANOHR (Btu/KWH)	10,273	10,273	10,273	10,301	10,301	10,301
15 NOF (%)	99.8	99.8	99.8	97.5	97.5	97.5
16 NSC (MW)	840	840	840	840	840	840
17 ANOHR Equation	-11.92 x NOF + 11463					

St. Lucie 2	Jul '15	Aug '15	Sep '15	Oct '15	Nov '15	Dec '15	Total
1 EAF (%)	93.0	93.0	18.6	69.0	93.0	93.0	84.8
2 EPOF (%)	0.0	0.0	80.0	25.8	0.0	0.0	8.8
3 EUOF (%)	7.0	7.0	1.4	5.2	7.0	7.0	6.4
4 EUOR (%)	7.0	7.0	7.0	7.0	7.0	7.0	7.0
5 PH	744	744	720	744	720	744	8,760
6 SH	744	744	144	552	720	744	7,992
7 RSH	0	0	0	0	0	0	0
8 UH	0	0	576	192	0	0	768
9 POH	0	0	576	192	0	0	768
10 FOH & EFOH	26	26	5	19	25	26	280
11 MOH & EMOH	26	26	5	19	25	26	280
12 Oper Mbtu	6,276,729	6,276,729	1,214,859	4,656,958	6,202,016	6,408,749	68,066,416
13 Net Gen (MWH)	609,332	609,332	117,936	452,088	603,720	623,844	6,616,098
14 ANOHR (Btu/KWH)	10,301	10,301	10,301	10,301	10,273	10,273	10,288
15 NOF (%)	97.5	97.5	97.5	97.5	99.8	99.8	98.6
16 NSC (MW)	840	840	840	840	840	840	840
17 ANOHR Equation	-11.92 x NOF + 11463						

ESTIMATED UNIT PERFORMANCE DATA

FLORIDA POWER & LIGHT

PERIOD OF: JANUARY THROUGH DECEMBER, 2015

Turkey Point 3		Jan '15	Feb '15	Mar '15	Apr '15	May '15	Jun '15
1	EAF (%)	90.6	90.6	90.6	90.6	90.6	90.6
2	EPOF (%)	0.0	0.0	0.0	0.0	0.0	0.0
3	EUOF (%)	9.4	9.4	9.4	9.4	9.4	9.4
4	EUOR (%)	9.4	9.4	9.4	9.4	9.4	9.4
5	PH	744	672	744	720	744	720
6	SH	744	672	744	720	744	720
7	RSH	0	0	0	0	0	0
8	UH	0	0	0	0	0	0
9	POH	0	0	0	0	0	0
10	FOH & EFOH	44	40	44	42	44	42
11	MOH & EMOH	26	23	26	25	26	25
12	Oper Mbtu	6,767,777	6,112,809	6,767,777	6,351,859	6,563,585	6,351,859
13	Net Gen (MWH)	608,613	549,713	608,613	569,316	588,293	569,316
14	ANOHR (Btu/KWH)	11,120	11,120	11,120	11,157	11,157	11,157
15	NOF (%)	100.9	100.9	100.9	97.5	97.5	97.5
16	NSC (MW)	811	811	811	811	811	811
17	ANOHR Equation	-10.96 x NOF + 12226					

Turkey Point 3		Jul '15	Aug '15	Sep '15	Oct '15	Nov '15	Dec '15	Total
1	EAF (%)	90.6	90.6	90.6	52.7	39.2	90.6	83.2
2	EPOF (%)	0.0	0.0	0.0	41.9	56.7	0.0	8.2
3	EUOF (%)	9.4	9.4	9.4	5.4	4.1	9.4	8.6
4	EUOR (%)	9.4	9.4	9.4	9.4	9.4	9.4	9.4
5	PH	744	744	720	744	720	744	8,760
6	SH	744	744	720	432	312	744	8,040
7	RSH	0	0	0	0	0	0	0
8	UH	0	0	0	312	408	0	720
9	POH	0	0	0	312	408	0	720
10	FOH & EFOH	44	44	42	25	18	44	473
11	MOH & EMOH	26	26	25	15	11	26	280
12	Oper Mbtu	6,563,585	6,563,585	6,351,859	3,811,131	2,838,080	6,767,777	71,818,786
13	Net Gen (MWH)	588,293	588,293	569,316	341,591	255,223	608,613	6,445,193
14	ANOHR (Btu/KWH)	11,157	11,157	11,157	11,157	11,120	11,120	11,143
15	NOF (%)	97.5	97.5	97.5	97.5	100.9	100.9	98.8
16	NSC (MW)	811	811	811	811	811	811	811
17	ANOHR Equation	-10.96 x NOF + 12226						

ESTIMATED UNIT PERFORMANCE DATA

FLORIDA POWER & LIGHT

PERIOD OF: JANUARY THROUGH DECEMBER, 2015

	Turkey Point 4	Jan '15	Feb '15	Mar '15	Apr '15	May '15	Jun '15
1	EAF (%)	93.6	93.6	93.6	93.6	93.6	93.6
2	EPOF (%)	0.0	0.0	0.0	0.0	0.0	0.0
3	EUOF (%)	6.4	6.4	6.4	6.4	6.4	6.4
4	EUOR (%)	6.4	6.4	6.4	6.4	6.4	6.4
5	PH	744	672	744	720	744	720
6	SH	744	672	744	720	744	720
7	RSH	0	0	0	0	0	0
8	UH	0	0	0	0	0	0
9	POH	0	0	0	0	0	0
10	FOH & EFOH	24	22	24	23	24	23
11	MOH & EMOH	24	22	24	23	24	23
12	Oper Mbtu	6,759,773	6,105,620	6,759,773	6,346,102	6,557,645	6,346,102
13	Net Gen (MWH)	615,140	555,612	615,140	576,342	595,554	576,342
14	ANOHR (Btu/KWH)	10,989	10,989	10,989	11,011	11,011	11,011
15	NOF (%)	100.7	100.7	100.7	97.5	97.5	97.5
16	NSC (MW)	821	821	821	821	821	821
17	ANOHR Equation	-6.72 x NOF + 11666					

	Turkey Point 4	Jul '15	Aug '15	Sep '15	Oct '15	Nov '15	Dec '15	Total
1	EAF (%)	93.6	93.6	93.6	93.6	93.6	93.6	93.6
2	EPOF (%)	0.0	0.0	0.0	0.0	0.0	0.0	0.0
3	EUOF (%)	6.4	6.4	6.4	6.4	6.4	6.4	6.4
4	EUOR (%)	6.4	6.4	6.4	6.4	6.4	6.4	6.4
5	PH	744	744	720	744	720	744	8,760
6	SH	744	744	720	744	720	744	8,760
7	RSH	0	0	0	0	0	0	0
8	UH	0	0	0	0	0	0	0
9	POH	0	0	0	0	0	0	0
10	FOH & EFOH	24	24	23	24	23	24	280
11	MOH & EMOH	24	24	23	24	23	24	280
12	Oper Mbtu	6,557,645	6,557,645	6,346,102	6,557,645	6,541,719	6,759,773	78,197,496
13	Net Gen (MWH)	595,554	595,554	576,342	595,554	595,297	615,140	7,107,571
14	ANOHR (Btu/KWH)	11,011	11,011	11,011	11,011	10,989	10,989	11,002
15	NOF (%)	97.5	97.5	97.5	97.5	100.7	100.7	98.8
16	NSC (MW)	821	821	821	821	821	821	821
17	ANOHR Equation	-6.72 x NOF + 11666						

ESTIMATED UNIT PERFORMANCE DATA

FLORIDA POWER & LIGHT

PERIOD OF: JANUARY THROUGH DECEMBER, 2015

	Turkey Point 5	Jan '15	Feb '15	Mar '15	Apr '15	May '15	Jun '15
1	EAF (%)	93.3	93.3	93.3	93.3	93.3	66.1
2	EPOF (%)	0.0	0.0	0.0	0.0	0.0	29.2
3	EUOF (%)	6.7	6.7	6.7	6.7	6.7	4.7
4	EUOR (%)	14.6	11.7	10.1	7.2	8.1	7.1
5	PH	744	672	744	720	744	720
6	SH	340	381	492	666	608	477
7	RSH	404	291	252	54	136	243
8	UH	0	0	0	0	0	0
9	POH	0	0	0	0	0	0
10	FOH & EFOH	15	14	15	15	15	10
11	MOH & EMOH	34	31	34	33	34	24
12	Oper Mbtu	2,473,940	2,600,767	3,673,628	4,762,971	4,516,620	3,327,112
13	Net Gen (MWH)	352,614	368,694	524,804	677,810	644,863	472,534
14	ANOHR (Btu/KWH)	7,016	7,054	7,000	7,027	7,004	7,041
15	NOF (%)	91.1	85.0	93.7	89.4	93.2	87.1
16	NSC (MW)	1,138	1,138	1,138	1,138	1,138	1,138
17	ANOHR Equation	-6.11 x NOF + 7573					

	Turkey Point 5	Jul '15	Aug '15	Sep '15	Oct '15	Nov '15	Dec '15	Total
1	EAF (%)	93.3	93.3	93.3	93.3	93.3	93.3	91.1
2	EPOF (%)	0.0	0.0	0.0	0.0	0.0	0.0	2.4
3	EUOF (%)	6.7	6.7	6.7	6.7	6.7	6.7	6.5
4	EUOR (%)	7.2	6.7	6.9	6.9	35.0	12.9	9.0
5	PH	744	744	720	744	720	744	8,760
6	SH	692	744	692	716	137	383	6,328
7	RSH	52	0	28	28	583	361	2432
8	UH	0	0	0	0	0	0	0
9	POH	0	0	0	0	0	0	0
10	FOH & EFOH	15	15	15	15	15	15	175
11	MOH & EMOH	34	34	33	34	33	34	394
12	Oper Mbtu	5,183,431	5,566,851	5,204,527	5,307,696	995,782	2,810,850	46,425,110
13	Net Gen (MWH)	740,596	795,378	743,929	757,701	141,910	400,920	6,621,753
14	ANOHR (Btu/KWH)	6,999	6,999	6,996	7,005	7,017	7,011	7,011
15	NOF (%)	94.0	93.9	94.5	93.0	91.0	92.0	92.0
16	NSC (MW)	1,138	1,138	1,138	1,138	1,138	1,138	1,138
17	ANOHR Equation	-6.11 x NOF + 7573						

ESTIMATED UNIT PERFORMANCE DATA

FLORIDA POWER & LIGHT

PERIOD OF: JANUARY THROUGH DECEMBER, 2015

West County 1	Jan '15	Feb '15	Mar '15	Apr '15	May '15	Jun '15
1 EAF (%)	92.3	92.3	62.5	92.3	92.3	92.3
2 EPOF (%)	0.0	0.0	32.3	0.0	0.0	0.0
3 EUOF (%)	7.7	7.7	5.2	7.7	7.7	7.7
4 EUOR (%)	8.4	7.7	8.4	7.7	7.7	7.7
5 PH	744	672	744	720	744	720
6 SH	684	672	462	720	744	720
7 RSH	60	0	42	0	0	0
8 UH	0	0	240	0	0	0
9 POH	0	0	240	0	0	0
10 FOH & EFOH	15	14	10	15	15	15
11 MOH & EMOH	42	38	29	41	42	41
12 Oper Mbtu	5,073,075	4,845,150	3,352,066	5,193,858	5,422,733	5,346,124
13 Net Gen (MWH)	747,800	712,522	493,241	763,915	798,165	788,049
14 ANOHR (Btu/KWH)	6,784	6,800	6,796	6,799	6,794	6,784
15 NOF (%)	93.8	90.9	91.6	91.0	92.0	93.9
16 NSC (MW)	1,166	1,166	1,166	1,166	1,166	1,166
17 ANOHR Equation	-5.36 x NOF + 7287					

West County 1	Jul '15	Aug '15	Sep '15	Oct '15	Nov '15	Dec '15	Total
1 EAF (%)	92.3	92.3	92.3	92.3	92.3	92.3	89.8
2 EPOF (%)	0.0	0.0	0.0	0.0	0.0	0.0	2.7
3 EUOF (%)	7.7	7.7	7.7	7.7	7.7	7.7	7.5
4 EUOR (%)	7.7	7.7	7.7	7.7	7.9	7.8	7.8
5 PH	744	744	720	744	720	744	8,760
6 SH	744	744	720	744	702	736	8,392
7 RSH	0	0	0	0	18	8	128
8 UH	0	0	0	0	0	0	240
9 POH	0	0	0	0	0	0	240
10 FOH & EFOH	15	15	15	15	15	15	175
11 MOH & EMOH	42	42	41	42	41	42	482
12 Oper Mbtu	5,434,414	5,449,635	5,270,875	5,383,404	5,125,060	5,203,637	61,097,205
13 Net Gen (MWH)	800,002	802,479	776,156	791,910	754,462	764,117	8,992,818
14 ANOHR (Btu/KWH)	6,793	6,791	6,791	6,798	6,793	6,810	6,794
15 NOF (%)	92.2	92.5	92.5	91.3	92.2	89.0	91.9
16 NSC (MW)	1,166	1,166	1,166	1,166	1,166	1,166	1,166
17 ANOHR Equation	-5.36 x NOF + 7287						

ESTIMATED UNIT PERFORMANCE DATA

FLORIDA POWER & LIGHT

PERIOD OF: JANUARY THROUGH DECEMBER, 2015

	West County 2	Jan '15	Feb '15	Mar '15	Apr '15	May '15	Jun '15
1	EAF (%)	90.5	90.5	70.0	90.5	90.5	90.5
2	EPOF (%)	0.0	0.0	22.6	0.0	0.0	0.0
3	EUOF (%)	9.5	9.5	7.4	9.5	9.5	9.5
4	EUOR (%)	9.7	9.6	9.6	9.5	9.6	9.5
5	PH	744	672	744	720	744	720
6	SH	728	664	569	720	736	720
7	RSH	16	8	7	0	8	0
8	UH	0	0	168	0	0	0
9	POH	0	0	168	0	0	0
10	FOH & EFOH	17	15	13	17	17	17
11	MOH & EMOH	54	49	42	52	54	52
12	Oper Mbtu	5,287,587	4,683,648	4,039,309	5,237,634	5,411,057	5,362,462
13	Net Gen (MWH)	771,235	681,853	588,306	763,949	789,820	783,413
14	ANOHR (Btu/KWH)	6,856	6,869	6,866	6,856	6,851	6,845
15	NOF (%)	91.4	88.6	89.2	91.5	92.6	93.9
16	NSC (MW)	1,159	1,159	1,159	1,159	1,159	1,159
17	ANOHR Equation	-4.58 x NOF + 7275					

	West County 2	Jul '15	Aug '15	Sep '15	Oct '15	Nov '15	Dec '15	Total
1	EAF (%)	90.5	90.5	90.5	25.3	37.2	90.5	78.8
2	EPOF (%)	0.0	0.0	0.0	72.0	58.9	0.0	12.9
3	EUOF (%)	9.5	9.5	9.5	2.7	3.9	9.5	8.3
4	EUOR (%)	9.5	9.5	9.5	7.5	9.7	9.5	9.5
5	PH	744	744	720	744	720	744	8,760
6	SH	744	744	720	263	292	744	7,644
7	RSH	0	0	0	97	164	0	300
8	UH	0	0	0	384	264	0	816
9	POH	0	0	0	384	264	0	816
10	FOH & EFOH	17	17	17	5	7	17	175
11	MOH & EMOH	54	54	52	15	21	54	552
12	Oper Mbtu	5,593,147	5,452,513	5,275,601	1,273,202	1,581,109	5,137,543	54,361,939
13	Net Gen (MWH)	817,592	795,755	769,936	181,834	226,910	746,953	7,917,556
14	ANOHR (Btu/KWH)	6,841	6,852	6,852	7,002	6,968	6,878	6,866
15	NOF (%)	94.8	92.3	92.3	59.7	67.0	86.6	89.4
16	NSC (MW)	1,159	1,159	1,159	1,159	1,159	1,159	1,159
17	ANOHR Equation	-4.58 x NOF + 7275						

ESTIMATED UNIT PERFORMANCE DATA

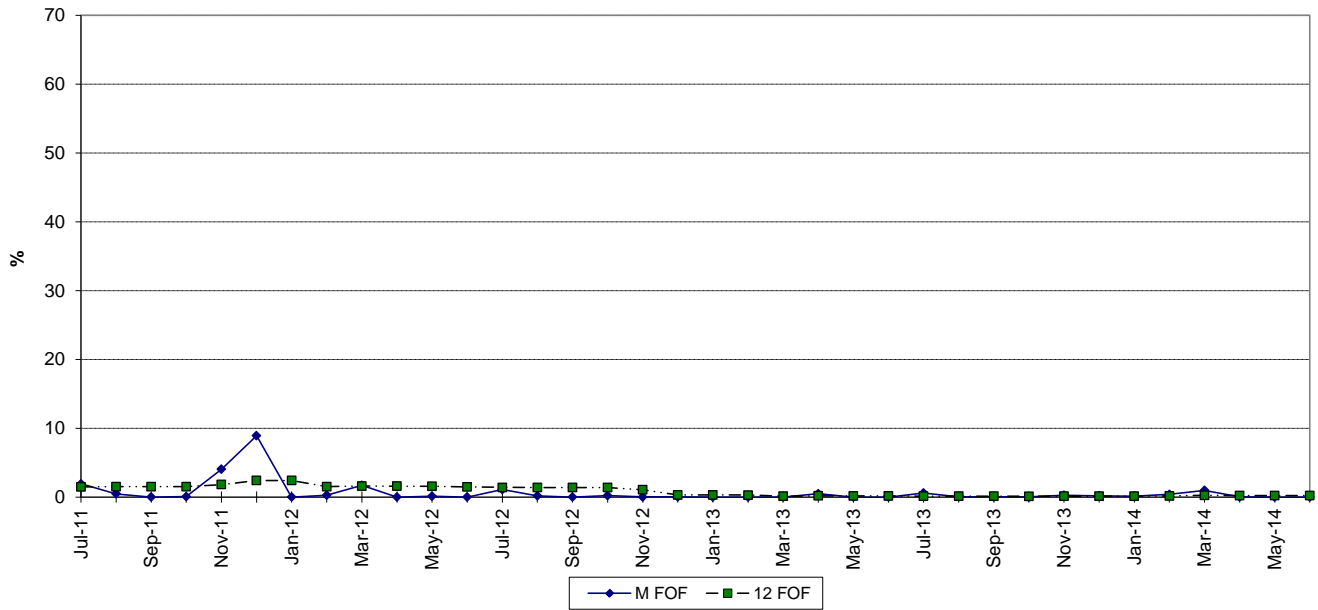
FLORIDA POWER & LIGHT

PERIOD OF: JANUARY THROUGH DECEMBER, 2015

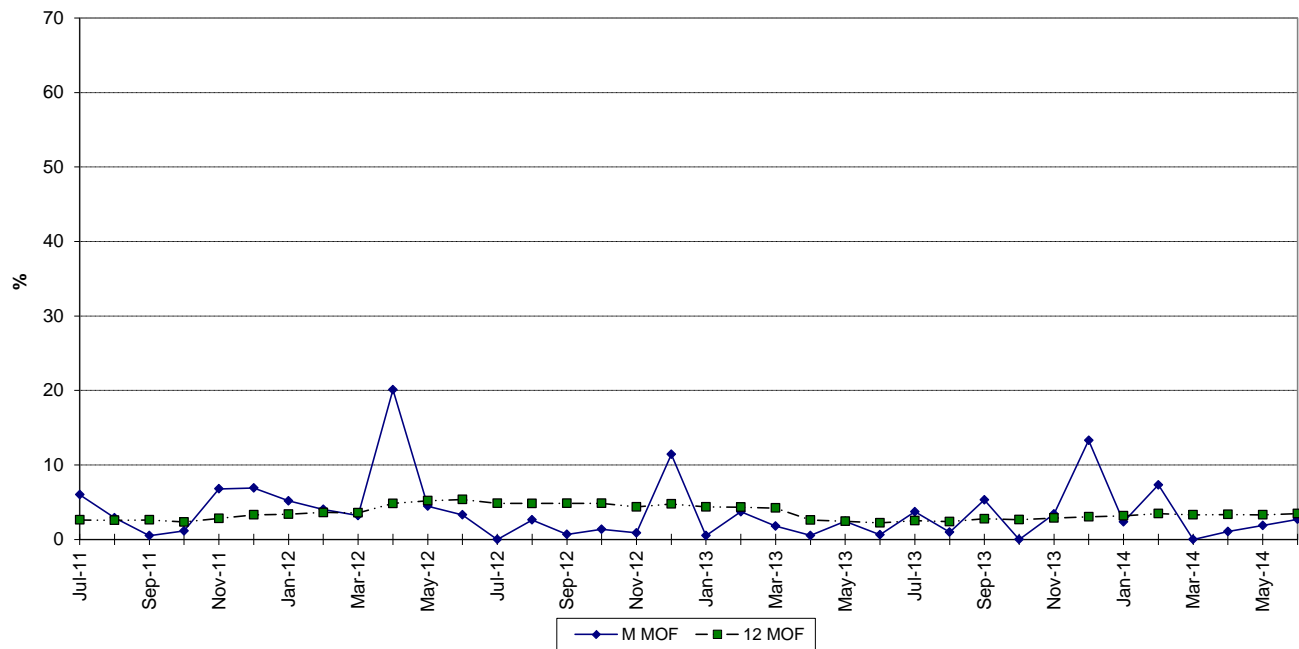
	West County 3	Jan '15	Feb '15	Mar '15	Apr '15	May '15	Jun '15
1	EAF (%)	94.8	94.8	66.3	94.8	94.8	94.8
2	EPOF (%)	0.0	0.0	30.1	0.0	0.0	0.0
3	EUOF (%)	5.2	5.2	3.6	5.2	5.2	5.2
4	EUOR (%)	7.7	6.1	5.6	5.2	5.2	5.2
5	PH	744	672	744	720	744	720
6	SH	496	566	478	712	744	720
7	RSH	248	106	98	8	0	0
8	UH	0	0	168	0	0	0
9	POH	0	0	168	0	0	0
10	FOH & EFOH	16	14	11	15	16	15
11	MOH & EMOH	23	21	16	22	23	22
12	Oper Mbtu	3,646,835	3,972,647	3,187,377	4,947,760	5,236,600	5,167,701
13	Net Gen (MWH)	547,655	593,198	473,045	737,921	782,049	773,608
14	ANOHR (Btu/KWH)	6,659	6,697	6,738	6,705	6,696	6,680
15	NOF (%)	94.7	89.9	84.9	88.9	90.1	92.1
16	NSC (MW)	1,166	1,166	1,166	1,166	1,166	1,166
17	ANOHR Equation	-8.05 x NOF + 7421					

	West County 3	Jul '15	Aug '15	Sep '15	Oct '15	Nov '15	Dec '15	Total
1	EAF (%)	94.8	94.8	67.4	92.7	94.8	94.8	90.0
2	EPOF (%)	0.0	0.0	28.9	2.2	0.0	0.0	5.1
3	EUOF (%)	5.2	5.2	3.7	5.1	5.2	5.2	4.9
4	EUOR (%)	5.2	5.2	4.3	5.2	5.9	6.6	5.5
5	PH	744	744	720	744	720	744	8,760
6	SH	744	744	612	720	632	581	7,749
7	RSH	0	0	108	24	88	163	843
8	UH	0	0	0	0	0	0	168
9	POH	0	0	0	0	0	0	168
10	FOH & EFOH	16	16	11	15	15	16	175
11	MOH & EMOH	23	23	16	22	22	23	254
12	Oper Mbtu	5,407,535	5,413,062	3,395,950	5,123,609	4,448,968	4,026,108	54,000,011
13	Net Gen (MWH)	810,968	811,797	494,820	766,319	664,521	600,195	8,056,096
14	ANOHR (Btu/KWH)	6,668	6,668	6,863	6,686	6,695	6,708	6,703
15	NOF (%)	93.5	93.6	69.3	91.3	90.2	88.6	89.2
16	NSC (MW)	1,166	1,166	1,166	1,166	1,166	1,166	1,166
17	ANOHR Equation	-8.05 x NOF + 7421						

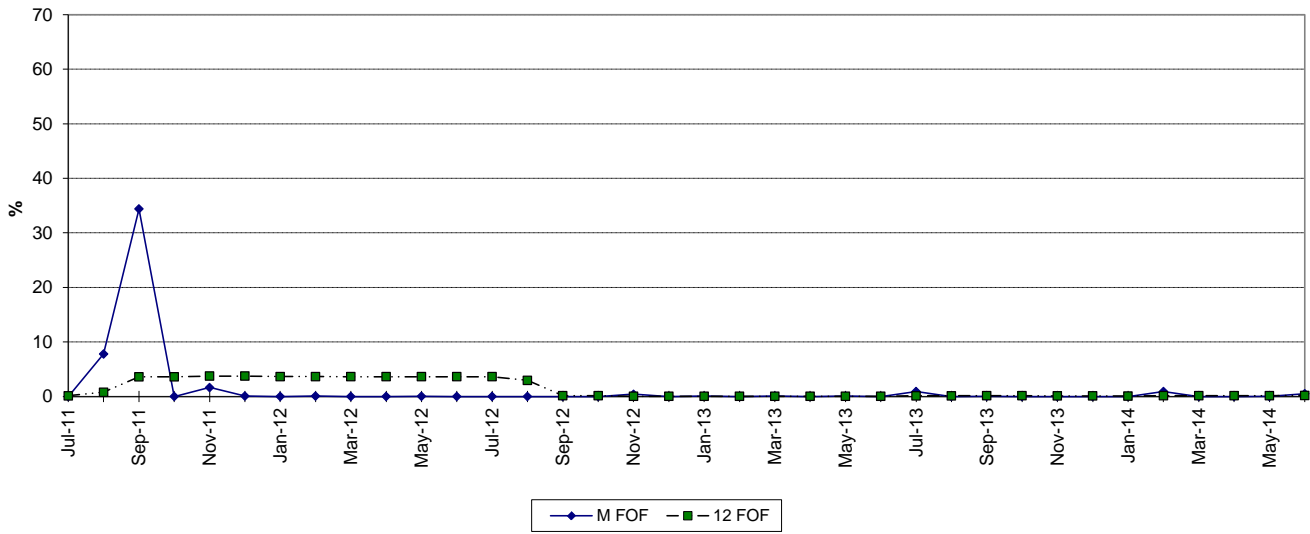
FT. MYERS 2 FORCED OUTAGE FACTOR



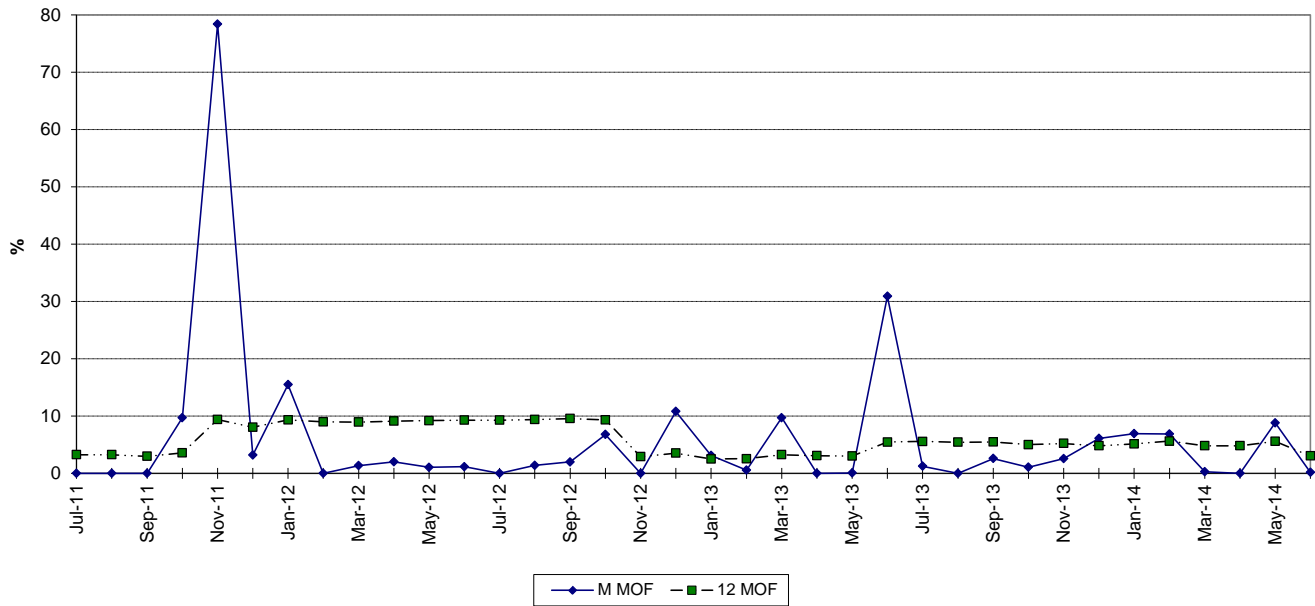
MAINTENANCE OUTAGE FACTOR



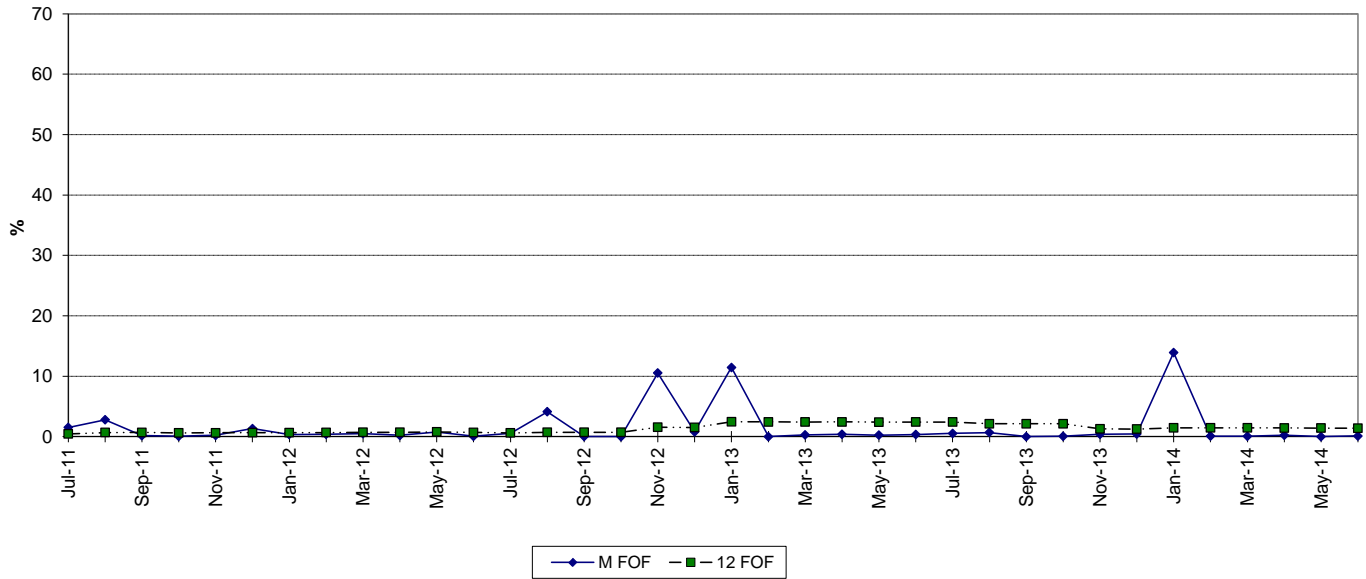
MANATEE 3 FORCED OUTAGE FACTOR



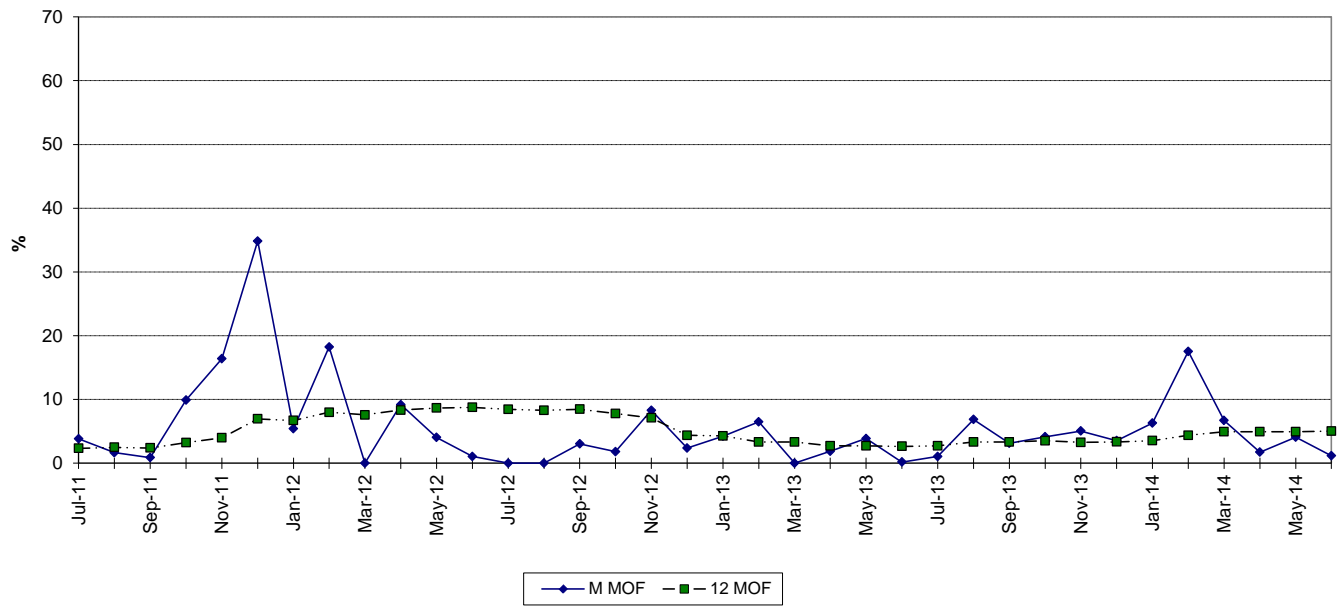
MAINTENANCE OUTAGE FACTOR



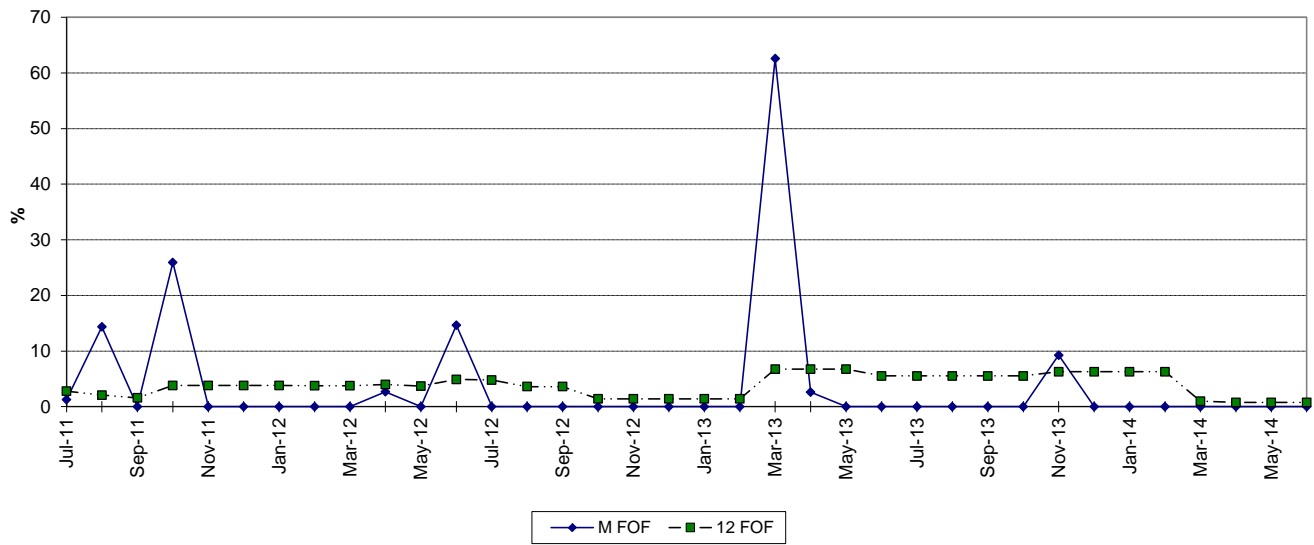
MARTIN 8 FORCED OUTAGE FACTOR



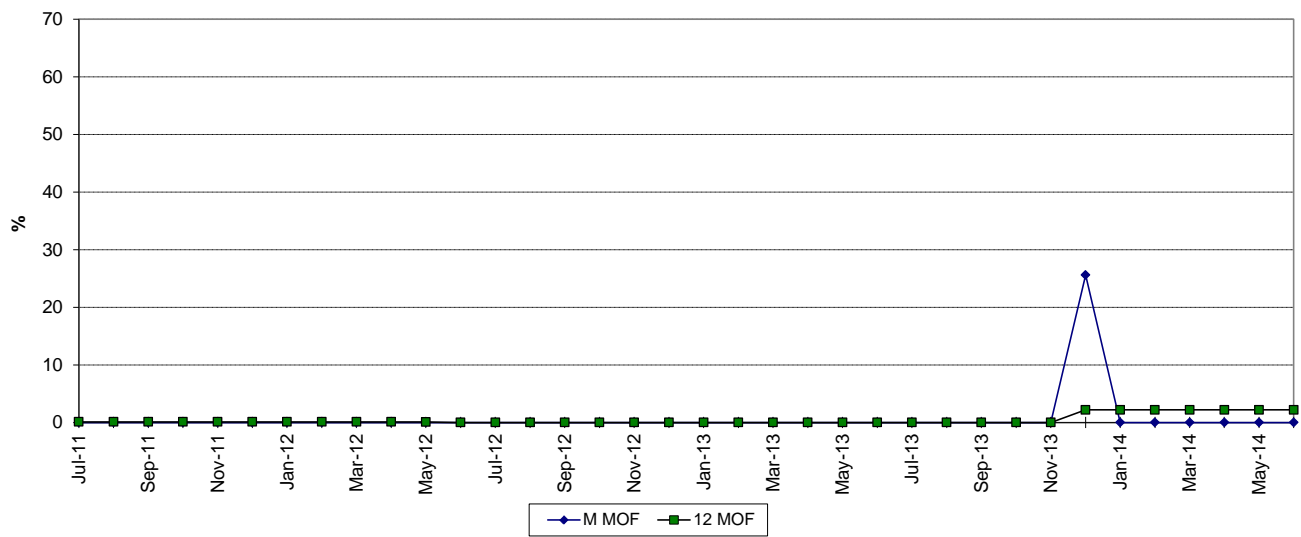
MAINTENANCE OUTAGE FACTOR



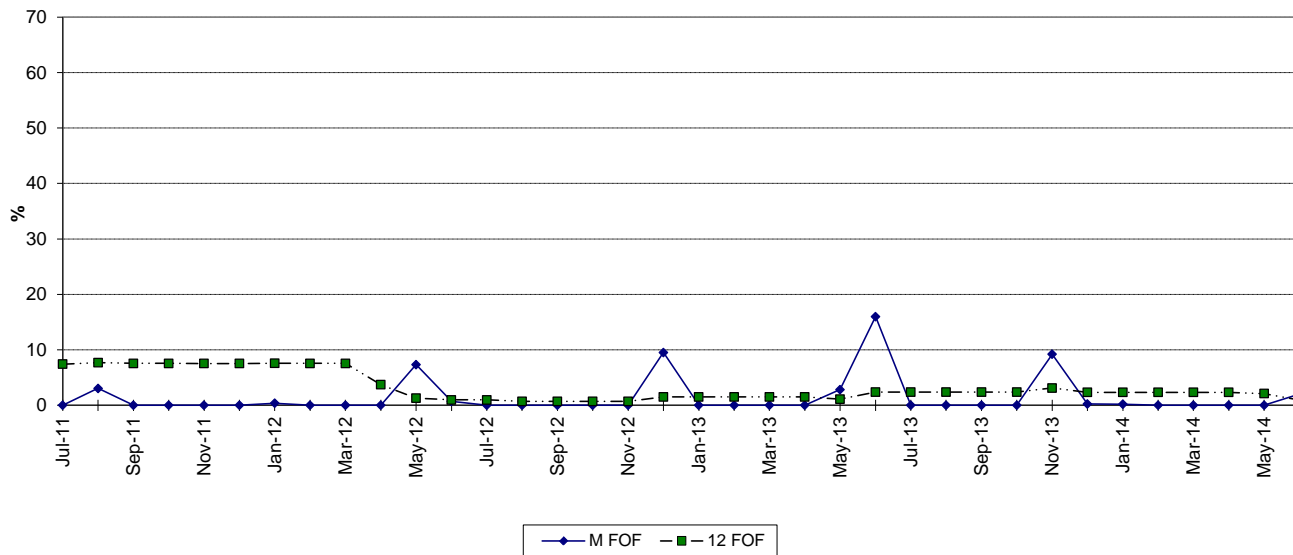
ST. LUCIE 1 FORCED OUTAGE FACTOR



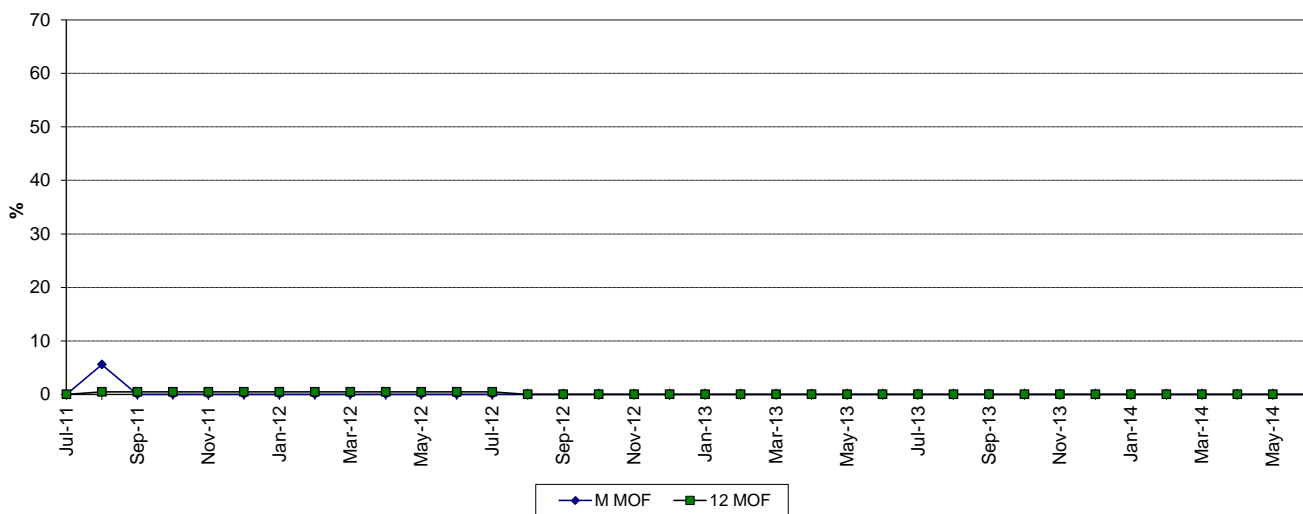
MAINTENANCE OUTAGE FACTOR



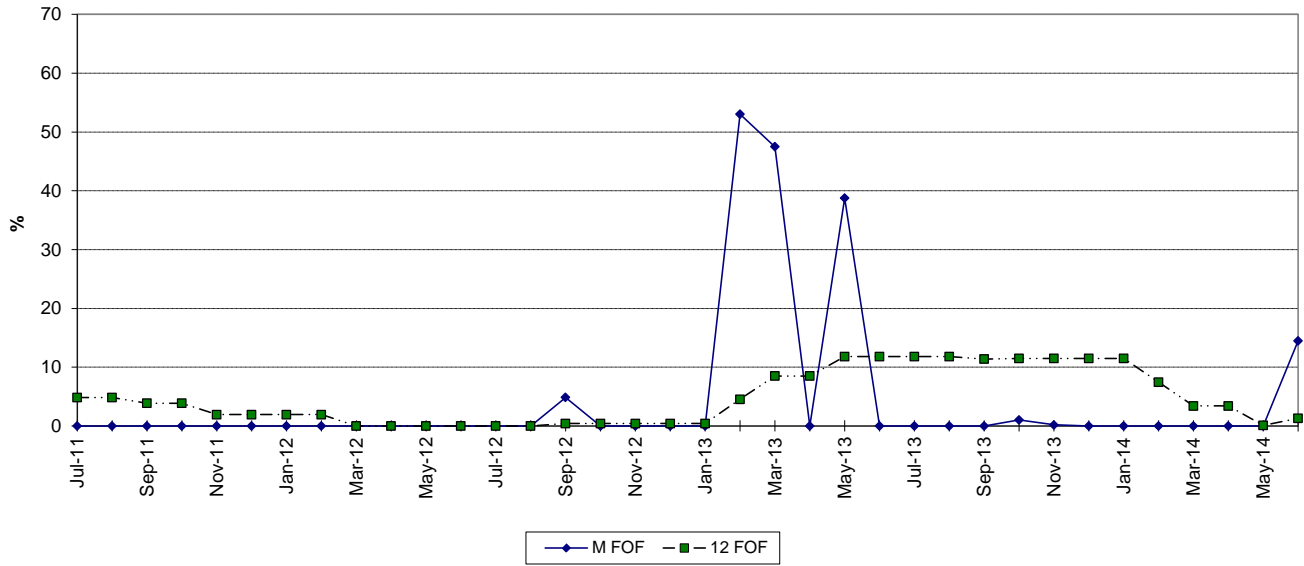
ST. LUCIE 2 FORCED OUTAGE FACTOR



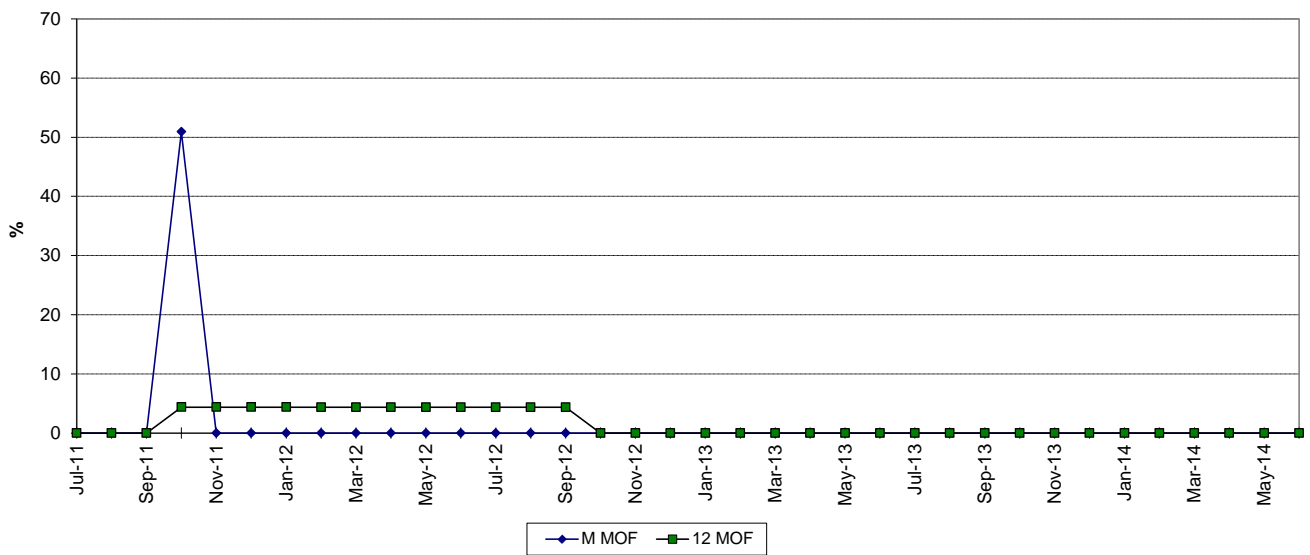
MAINTENANCE OUTAGE FACTOR



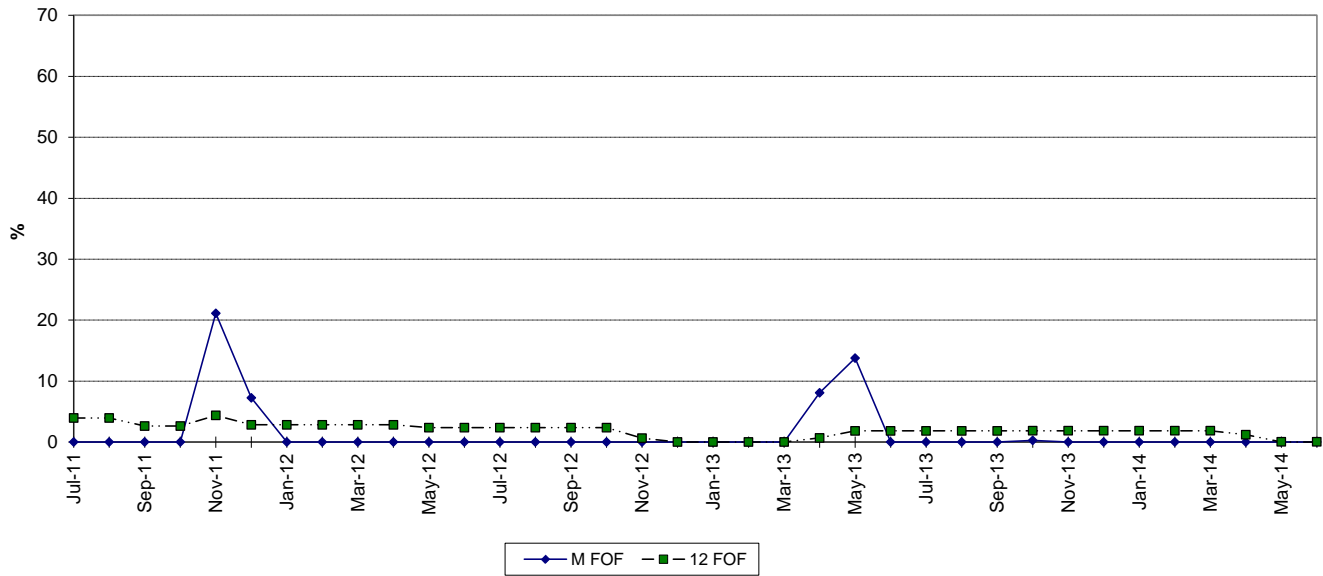
TURKEY POINT 3 FORCED OUTAGE FACTOR



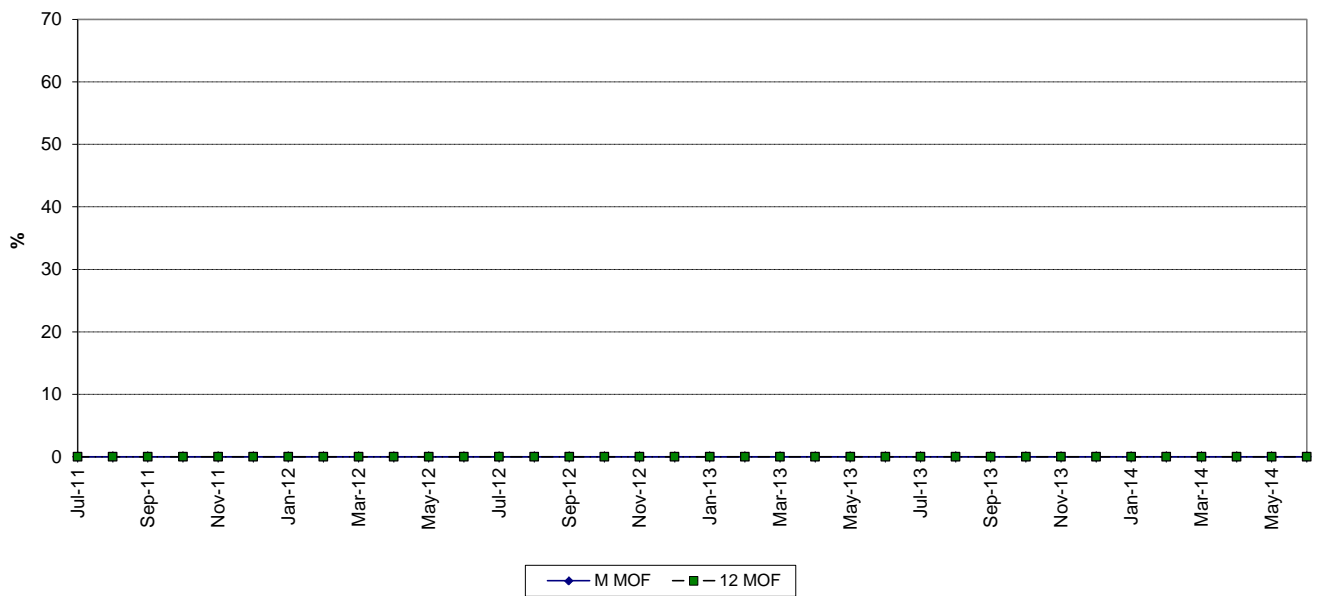
MAINTENANCE OUTAGE FACTOR



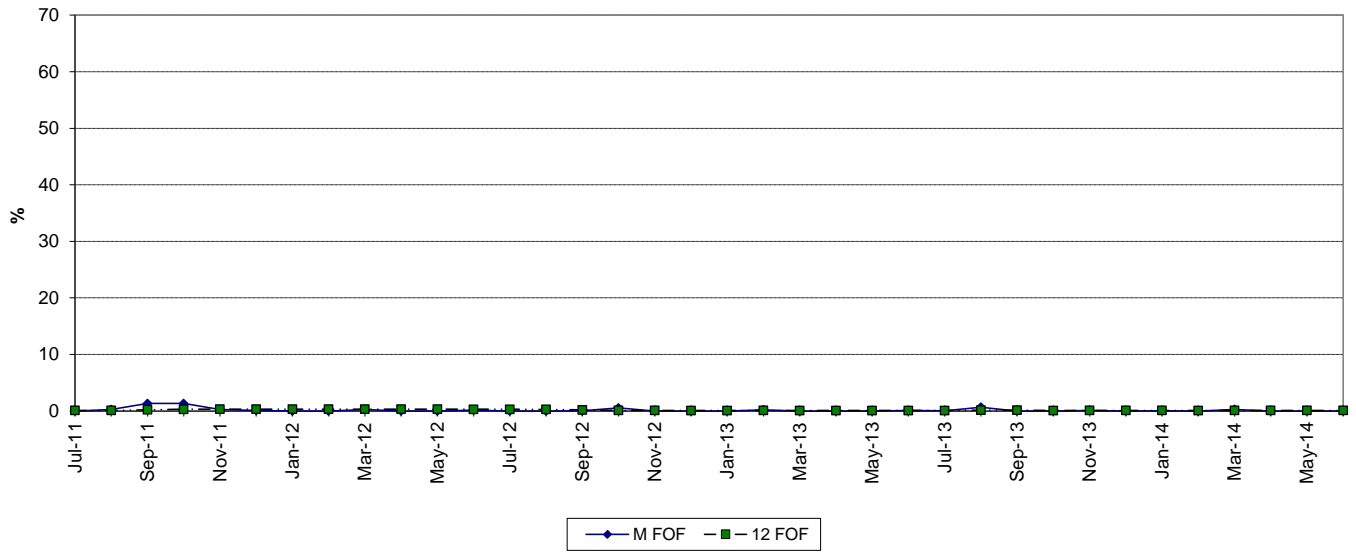
TURKEY POINT 4 FORCED OUTAGE FACTOR



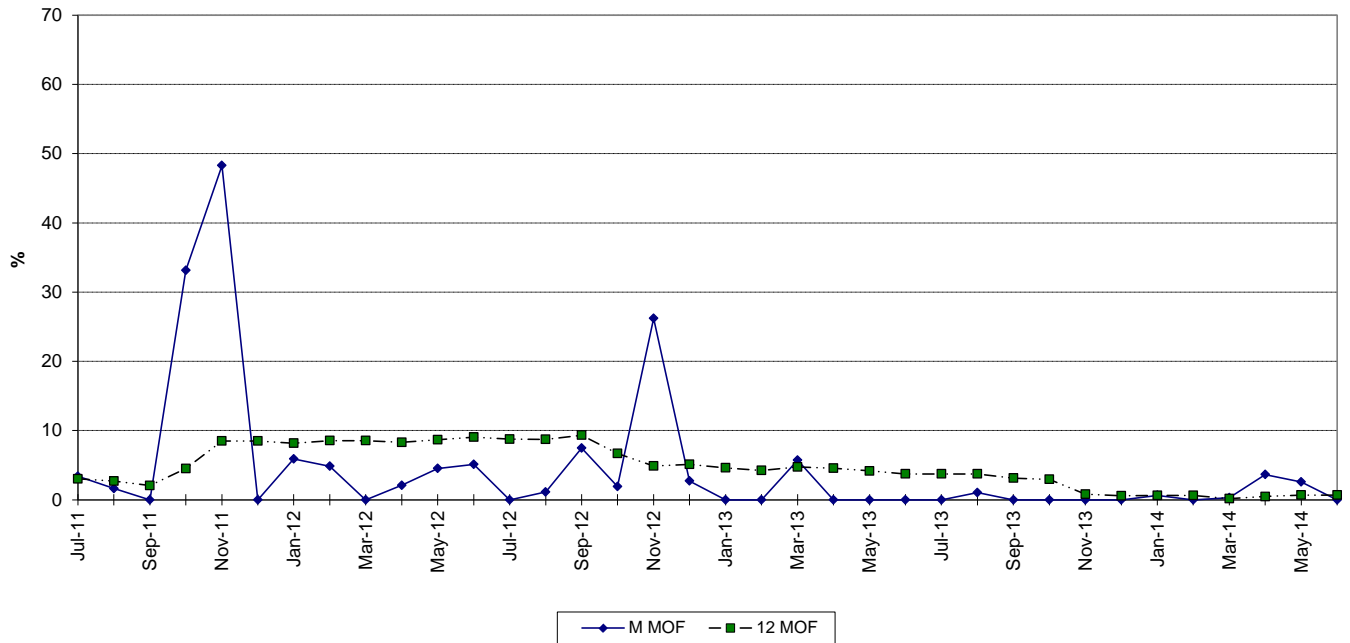
MAINTENANCE OUTAGE FACTOR



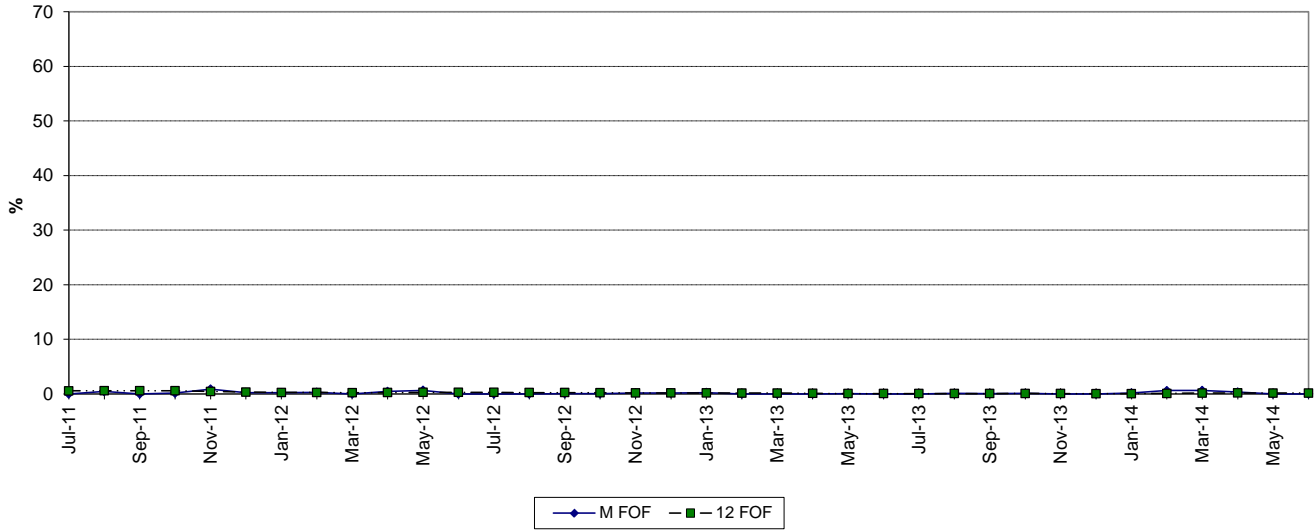
TURKEY POINT 5 FORCED OUTAGE FACTOR



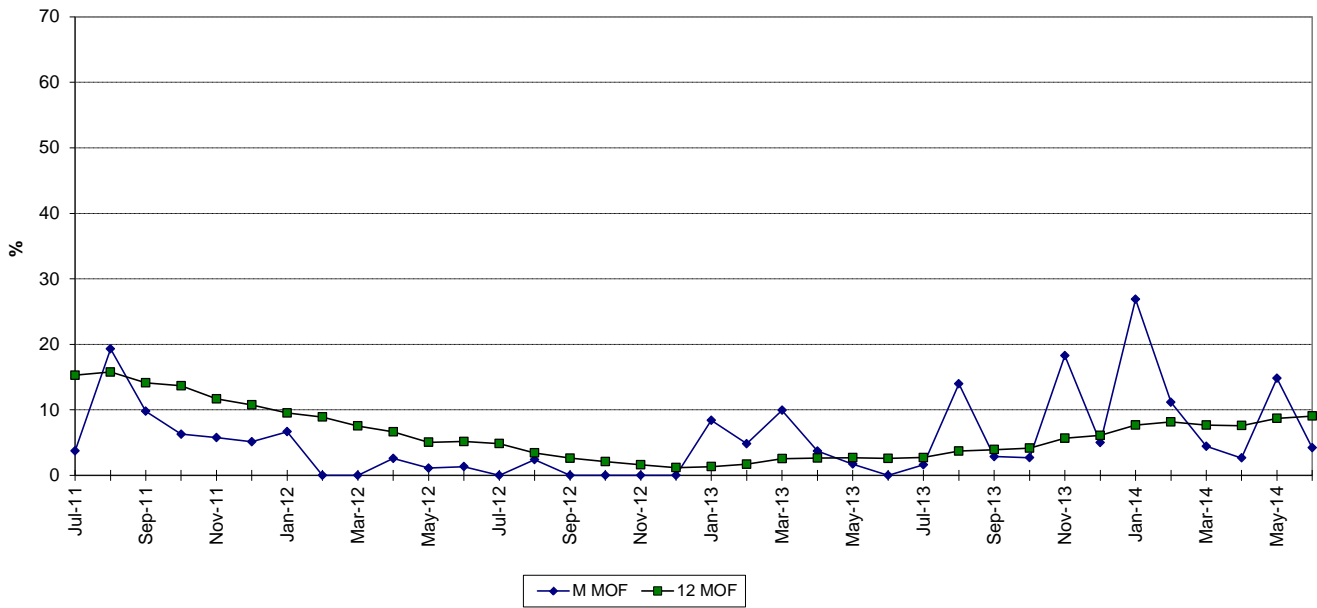
MAINTENANCE OUTAGE FACTOR



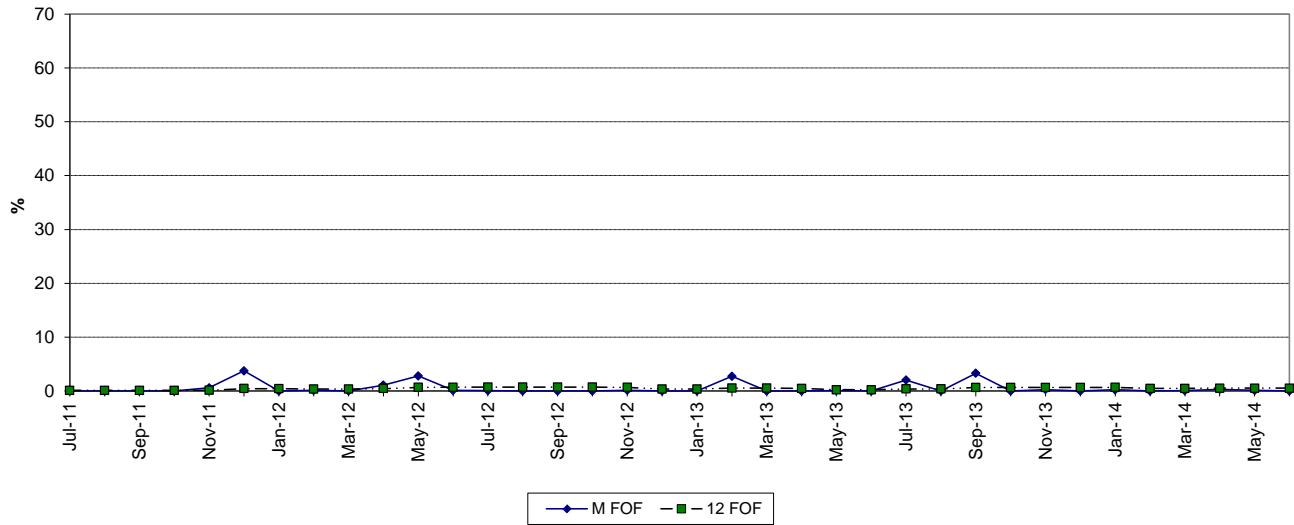
WEST COUNTY 1 FORCED OUTAGE FACTOR



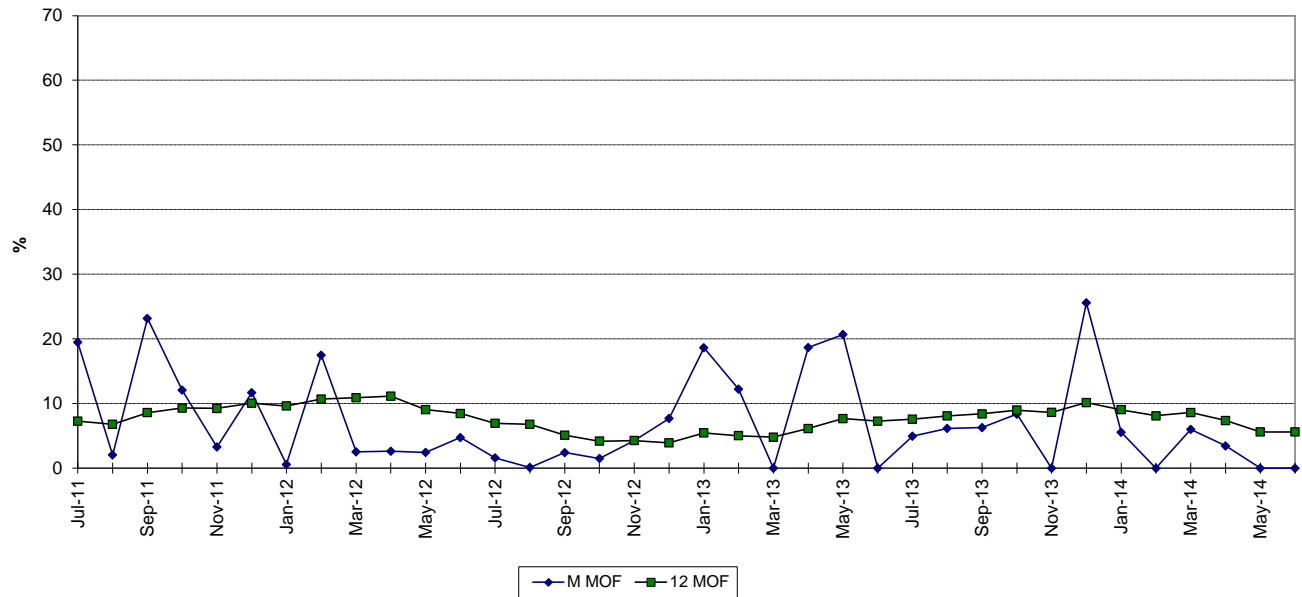
MAINTENANCE OUTAGE FACTOR



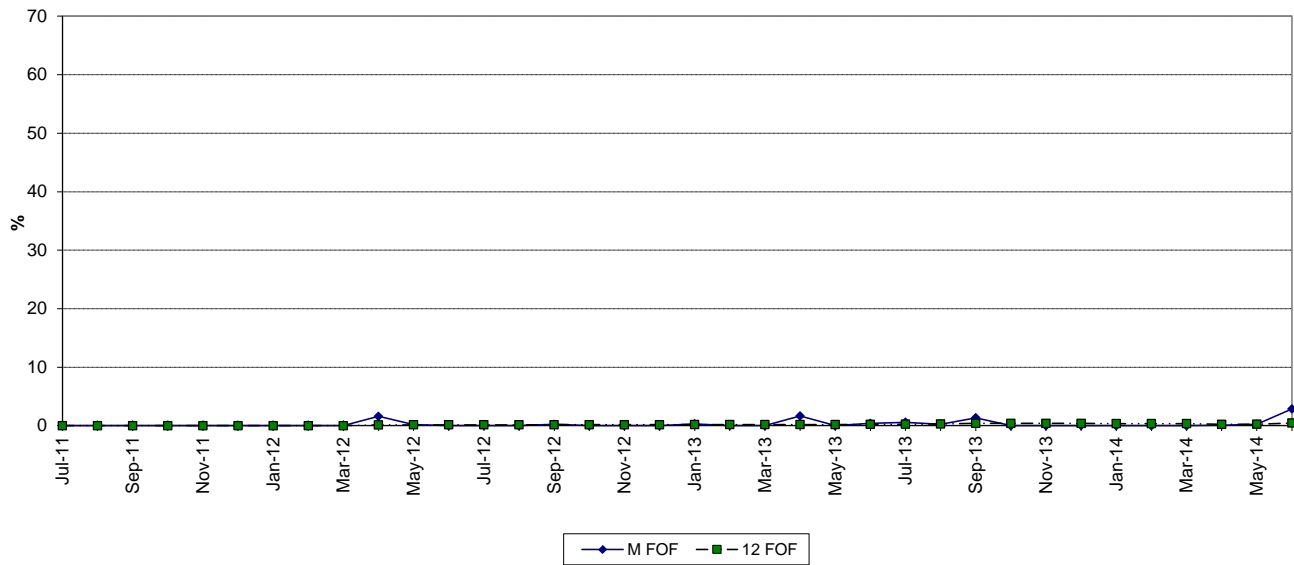
WEST COUNTY 2 FORCED OUTAGE FACTOR



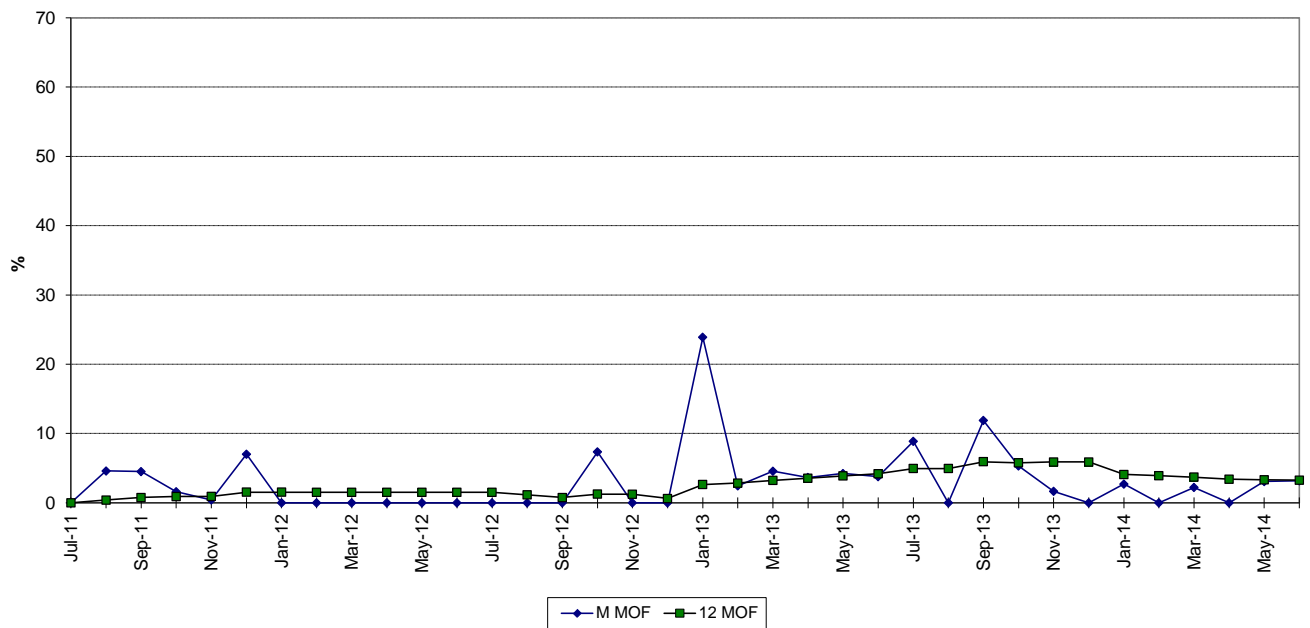
MAINTENANCE OUTAGE FACTOR



WEST COUNTY 3 FORCED OUTAGE FACTOR



MAINTENANCE OUTAGE FACTOR



PLANNED OUTAGE SCHEDULE (ESTIMATED)

FLORIDA POWER & LIGHT COMPANY

PERIOD OF: JANUARY THROUGH DECEMBER, 2015

PLANT/UNIT	PLAN OUTAGE	REASON FOR OUTAGE	LR MW*
Ft. Myers 2	04/11/2015 - 05/24/2015	CT 2A .04 / CT MAJ / PKG3 / GEN MAJ (REWEDGE) / LPEV / HRSG - 17% CURT	232
Ft. Myers 2	04/18/2015 - 04/24/2015	BOP INSP -100% CURT	1,366
Ft. Myers 2	04/18/2015 - 05/31/2015	CT 2E .04 / CT MAJ / PKG3 / GEN MAJ (REWEDGE) / LPEV / HRSG - 17% CURT	232
Ft. Myers 2	05/30/2015 - 07/05/2015	CT 2C .04 / CT MAJ / PKG3 / LPEV / HRSG - 17% CURT	232
Ft. Myers 2	06/06/2015 - 07/19/2015	CT 2F .04 / RTR / CT MAJ / PKG3 / GEN MAJ (REWEDGE) / LPEV / HRSG - 17% CURT	235
Manatee 3	07/13/2015 - 07/19/2015	BOP INSPECTION- 100% CURT	1,078
Manatee 3	07/20/2015 - 07/26/2015	CT 3B HRSG INSP - 25% CURT	270
Manatee 3	07/27/2015 - 08/02/2015	CT 3C HRSG INSP - 25% CURT	270
Martin 8	01/10/2015 - 02/22/2015	CT 8A GENERATOR MAJOR - 25% CURT	287
Martin 8	02/07/2015 - 02/22/2015	BOP - 100% CURT, CT 8C&D MOD CI / HRSG	1,147
Martin 8	02/07/2015 - 03/22/2015	CT 8B GENERATOR MAJOR - 25% CURT	287
St. Lucie 1	03/23/2015 - 04/25/2015	REFUELING	1,003
St. Lucie 2	09/07/2015 - 10/09/2015	REFUELING	840
Turkey Point 3	10/19/2015 - 11/18/2015	REFUELING	811
Turkey Point 4	NONE		
Turkey Point 5	06/06/2015 - 06/10/2015	BOP - 25% CURT	285
Turkey Point 5	06/06/2015 - 06/12/2015	CT 5A, B & C HRSG INSP - 25% CURT	285
Turkey Point 5	06/13/2015 - 06/19/2015	CT 5D HRSG INSP - 25% CURT	285
West County 1	03/14/2015 - 03/23/2015	BLOCK OUTAGE / CONTROLS UPGRADE - 100% CURT	1,208
West County 2	03/14/2015 - 03/20/2015	BLOCK OUTAGE / CONTROLS UPGRADE - 100% CURT	1,202
West County 2	10/03/2015 - 11/11/2015	CT 2A MAJOR / 24K - 33% CURT	382
West County 2	10/10/2015 - 11/18/2015	CT 2C MAJOR / 24K - 33% CURT	382
West County 2	10/16/2015 - 11/11/2015	ST VALVES / GEN MINOR - 100% CURT	1,159
West County 2	10/16/2015 - 11/24/2015	CT 2B MAJOR / 24K - 33% CURT	382
West County 3	03/07/2015 - 03/20/2015	CT 3B COMB INSP - 33% CURT	398
West County 3	03/14/2015 - 03/20/2015	BLOCK OUTAGE / CONTROLS UPGRADE / BOP - 100% CURT	1,207
West County 3	09/05/2015 - 09/19/2015	CT 3A COMB INSP - 33% CURT	385
West County 3	09/19/2015 - 10/02/2015	CT 3C COMB INSP - 33% CURT	385

*Approximate load reduction MW are based on the unit's estimated MW rating during the outage period

WITNESS: J. CARINE BULLOCK

GENERATING PERFORMANCE INCENTIVE FACTOR

JANUARY THROUGH DECEMBER, 2015

WITHOUT GAS RESERVES

SEPTEMBER 15, 2014

JCB-3

DOCKET NO. 140001-EI

FPL Witness: J. Carine Bullock

Exhibit No.: _____

Pages 1 - 32

EXHIBIT INDEX

FLORIDA POWER & LIGHT COMPANY

JANUARY THROUGH DECEMBER, 2015

<u>EXHIBIT</u>	<u>PAGE NUMBER</u>	<u>TITLE</u>
JCB-3	7.201.001	Exhibit Index
	7.201.002	Projected System Generation
	7.201.003	Units Used to Determine GPIF
	7.201.004	GPIF Reward/Penalty Table (Estimated)
	7.201.005	GPIF Calculation of Maximum Allowed Incentive Dollars (Estimated)
	7.201.006 and 7.201.007	GPIF Target and Range Summary
	7.201.008	GPIF Projected Unit Heat Rate Equations
	7.201.009	Derivation of Weighting Factors
	7.201.010 - 7.201.020	Estimated Unit Performance Data
	7.201.021 - 7.201.031	Unit FOF and MOF vs Time Graphs
	7.201.032	Planned Outages Schedule (Estimated)

**Projected System Generation
January Through December, 2015**

<u>Name</u>	<u>Capacity (MW)</u>	<u>Service Hours</u>	<u>Net Output MWH</u>	<u>NOF %</u>	<u>% of Total Output</u>	<u>Cumulative % of Total Output</u>	<u>Production Cost (\$000)</u>
PRV5	1,344	8,582	9,967,890	95.8	8.7	8.7	263,720
CCEC	1,355	8,555	9,781,200	94.5	8.5	17.2	259,910
WEST COUNTY 1	1,208	8,392	8,983,720	91.8	7.8	25.0	243,620
WEST COUNTY 3	1,207	7,749	8,047,490	89.1	7.0	32.0	218,110
WEST COUNTY 2	1,202	7,644	7,915,020	89.3	6.9	38.9	213,690
ST. LUCIE 1	1,003	7,968	7,694,320	98.4	6.7	45.6	51,840
MARTIN 8	1,147	7,748	7,443,130	86.5	6.5	52.1	201,680
TURKEY POINT 4	848	8,760	7,107,580	98.8	6.2	58.3	51,380
TURKEY POINT 5	1,166	6,328	6,619,870	91.9	5.8	64.0	179,380
ST. LUCIE 2	860	7,992	6,616,100	98.6	5.8	69.8	43,280
TURKEY POINT 3	839	8,040	6,445,200	98.8	5.6	75.4	48,080
FT. MYERS 2	1,476	5,332	6,206,730	84.2	5.4	80.8	176,910
MANATEE 3	1,134	5,989	6,038,480	93.5	5.3	86.1	166,130
SCHERER 4	646	8,760	5,126,820	91.3	4.5	90.5	133,580
SANFORD 4	990	2,935	2,645,610	96.0	2.3	92.8	76,930
MARTIN 3	454	2,759	1,157,650	95.8	1.0	93.8	34,610
SANFORD 5	994	1,278	1,093,600	90.4	1.0	94.8	32,440
MARTIN 4	453	2,326	936,970	92.2	0.8	95.6	28,190
LAUDERDALE 5	442	1,799	750,100	97.2	0.7	96.3	23,030
ST JOHNS 20	128	8,760	677,430	60.9	0.6	96.8	24,030
LAUDERDALE 4	442	1,434	596,270	96.9	0.5	97.4	18,450
MARTIN 1	805	951	539,710	71.0	0.5	97.8	32,800
ST JOHNS 10	128	7,560	497,620	51.8	0.4	98.3	17,930
MARTIN 2	808	1,318	472,670	44.9	0.4	98.7	37,710
MANATEE 1	795	546	352,910	81.9	0.3	99.0	27,250
TURKEY POINT 1	380	1,066	295,200	73.1	0.3	99.2	19,900
MANATEE 2	795	379	253,140	84.7	0.2	99.5	19,150
PUTNAM 2	255	911	218,050	95.7	0.2	99.7	7,810
PUTNAM 1	251	802	187,570	94.7	0.2	99.8	6,840
FORT MYERS 3A_B	314	651	182,180	94.5	0.2	100.0	7,820
FORT MYERS 1-12	690	47	12,750	41.9	0.0	100.0	5,460
LAUDERDALE 1-24	886	29	11,420	46.9	0.0	100.0	980
EVERGLADES 1-12	443	0	0	0.0	0.0	100.0	-

Total	25,886	114,874,400	100.0	2,672,640
--------------	---------------	--------------------	--------------	------------------

**UNITS TO BE USED TO DETERMINE THE
GENERATING PERFORMANCE INCENTIVE FACTOR**

**FLORIDA POWER & LIGHT COMPANY
JANUARY THROUGH DECEMBER, 2015**

Ft. Myers 2
Manatee 3
Martin 8
St. Lucie 1
St. Lucie 2
Turkey Point 3
Turkey Point 4
Turkey Point 5
West County 1
West County 2
West County 3

GENERATING PERFORMANCE INCENTIVE FACTOR

REWARD/PENALTY TABLE (ESTIMATED)

**FLORIDA POWER & LIGHT COMPANY
JANUARY THROUGH DECEMBER, 2015**

Generating Performance Incentive Points (GPIF)	Fuel Savings/(Loss) (\$000)	Generating Performance Incentive Factor (\$000)
+ 10	118,434	55,377
+ 9	106,591	49,839
+ 8	94,747	44,301
+ 7	82,904	38,764
+ 6	71,060	33,226
+ 5	59,217	27,688
+ 4	47,374	22,151
+ 3	35,530	16,613
+ 2	23,687	11,075
+ 1	11,843	5,538
0	0	0
- 1	(11,843)	(5,538)
- 2	(23,687)	(11,075)
- 3	(35,530)	(16,613)
- 4	(47,374)	(22,151)
- 5	(59,217)	(27,688)
- 6	(71,060)	(33,226)
- 7	(82,904)	(38,764)
- 8	(94,747)	(44,301)
- 9	(106,591)	(49,839)
- 10	(118,434)	(55,377)

GENERATING PERFORMANCE INCENTIVE FACTOR

CALCULATION OF MAXIMUM ALLOWED INCENTIVE DOLLARS (ESTIMATED)

FLORIDA POWER & LIGHT COMPANY
PERIOD OF: JANUARY THROUGH DECEMBER, 2015

LINE 1	BEGINNING OF PERIOD BALANCE OF COMMON EQUITY		\$	13,528,240,111
	END OF MONTH BALANCE OF COMMON EQUITY			
LINE 2	MONTH OF JANUARY	2015	\$	14,078,494,821
LINE 3	MONTH OF FEBRUARY	2015	\$	14,172,840,706
LINE 4	MONTH OF MARCH	2015	\$	14,292,254,762
LINE 5	MONTH OF APRIL	2015	\$	14,390,099,353
LINE 6	MONTH OF MAY	2015	\$	14,562,665,397
LINE 7	MONTH OF JUNE	2015	\$	14,368,682,014
LINE 8	MONTH OF JULY	2015	\$	14,556,993,745
LINE 9	MONTH OF AUGUST	2015	\$	14,194,084,596
LINE 10	MONTH OF SEPTEMBER	2015	\$	14,297,123,292
LINE 11	MONTH OF OCTOBER	2015	\$	14,407,691,042
LINE 12	MONTH OF NOVEMBER	2015	\$	14,527,679,539
LINE 13	MONTH OF DECEMBER	2015	\$	14,618,504,697
LINE 14	AVERAGE COMMON EQUITY FOR THE PERIOD (SUMMATION OF LINE 1 THROUGH LINE 13 DIVIDED BY 13)		\$	14,307,334,929
LINE 15	25 BASIS POINTS			0.0025
LINE 16	REVENUE EXPANSION FACTOR			61.3808%
LINE 17	MAXIMUM ALLOWED INCENTIVE DOLLARS (LINE 14 TIMES LINE 15 DIVIDED BY LINE 16)		\$	58,272,843
LINE 18	JURISDICTIONAL SALES			108,216,881,593 KWH
LINE 19	TOTAL SALES			113,871,155,027 KWH
LINE 20	JURISDICTIONAL SEPARATION FACTOR (LINE 18 DIVIDED BY LINE 19)			95.03%
LINE 21	MAXIMUM ALLOWED JURISDICTIONAL INCENTIVE DOLLARS (LINE 17 TIMES LINE 20)		\$	55,376,683
LINE 22	INCENTIVE CAP (50 PERCENT OF PROJECTED FUEL SAVINGS AT 10 GPIF-POINT LEVEL FROM SHEET NO. 3.515)		\$	59,217,000
LINE 23	MAXIMUM ALLOWED GPIF REWARD (AT 10 GPIF-POINT LEVEL) (THE LESSER OF LINE 21 AND LINE 22)		\$	55,376,683

Note: Line 22 and 23 are as approved by Commission order PSC-13-0665-FOF-EI dated 12/18/13 effective 1/1/14.

GPIF TARGET AND RANGE SUMMARY

FLORIDA POWER & LIGHT COMPANY
PERIOD OF: JANUARY THROUGH DECEMBER, 2015

<u>Plant / Unit</u>	<u>Weighting Factor (%)</u>	<u>EAF Target (%)</u>	<u>EAF Range</u>		<u>Max. Fuel Savings (\$000's)</u>	<u>Max. Fuel Loss (\$000's)</u>
			<u>Max. (%)</u>	<u>Min. (%)</u>		
Ft. Myers 2	3.91	84.1	86.6	81.6	4,632	-4,632
Martin 8	4.24	84.7	87.2	82.2	5,016	-5,016
Manatee 3	3.66	90.3	92.8	87.8	4,334	-4,334
St. Lucie 1	8.72	83.5	86.5	80.5	10,330	-10,330
St. Lucie 2	7.19	84.8	87.8	81.8	8,509	-8,509
Turkey Point 3	7.16	83.2	86.2	80.2	8,483	-8,483
Turkey Point 4	7.89	93.6	96.6	90.6	9,342	-9,342
Turkey Point 5	4.68	91.1	93.6	88.6	5,545	-5,545
West County 1	4.52	89.8	92.3	87.3	5,358	-5,358
West County 2	4.82	78.8	81.8	75.8	5,709	-5,709
West County 3	3.35	90.0	92.0	88.0	3,965	-3,965
	60.14				71,223	-71,223

GPIF TARGET AND RANGE SUMMARY

FLORIDA POWER & LIGHT COMPANY
PERIOD OF: JANUARY THROUGH DECEMBER, 2015

<u>Plant / Unit</u>	<u>Weighting Factor (%)</u>	<u>ANOHR TARGET BTU/KWH</u>	<u>NOF</u>	<u>ANOHR RANGE BTU/KWH</u>	<u>BTU/KWH</u>	<u>Max. Fuel Savings (\$000's)</u>	<u>Max. Fuel Loss (\$000's)</u>
Ft. Myers 2	2.76	7,197	84.2	7,064	7,330	3,269	-3,269
Martin 8	3.27	6,922	86.5	6,789	7,055	3,875	-3,875
Manatee 3	2.37	6,921	93.5	6,804	7,038	2,808	-2,808
St. Lucie 1	3.92	10,405	98.4	10,277	10,533	4,648	-4,648
St. Lucie 2	3.59	10,288	98.6	10,142	10,434	4,249	-4,249
Turkey Point 3	4.09	11,143	98.8	10,972	11,314	4,845	-4,845
Turkey Point 4	4.81	11,002	98.8	10,821	11,183	5,695	-5,695
Turkey Point 5	3.24	7,011	91.9	6,861	7,161	3,838	-3,838
West County 1	4.42	6,795	91.8	6,649	6,941	5,235	-5,235
West County 2	3.68	6,866	89.3	6,726	7,006	4,357	-4,357
West County 3	3.71	6,704	89.1	6,569	6,839	4,392	-4,392
	<u>39.86</u>					<u>47,211</u>	<u>-47,211</u>

**GENERATING PERFORMANCE INCENTIVE FACTOR
PROJECTED UNIT HEAT RATE EQUATIONS
FLORIDA POWER & LIGHT COMPANY
PERIOD OF: JANUARY THROUGH DECEMBER, 2015**

<u>Plant/Unit</u>	<u>ANOHR</u>	<u>NOF</u>	<u>MW</u>	<u>ANOHR Equation</u>		<u>Bounds</u>	<u>First</u>	<u>Last</u>	<u>Exclusions</u>
				<u>a coef.</u>	<u>b coef.</u>				
Ft. Myers 2	7,197	84.2	1476	8459	-14.99	133	07-11	06-14	12/11, 9/13-11/13
Martin 8	6,922	86.5	1147	7304	-4.42	133	07-11	06-14	12/11, 2/13
Manatee 3	6,921	93.5	1134	7287	-3.91	117	07-11	06-14	8/11-9/11, 11/11, 6/13, 6/14
St. Lucie 1	10,405	98.4	1003	12884	-25.19	128	07-11	06-14	7/11-5/12, 10/13
St. Lucie 2	10,288	98.6	860	11463	-11.92	146	07-11	06-14	8/11-9/11, 4/12-12/12
Turkey Point 3	11,143	98.8	839	12226	-10.96	171	07-11	06-14	10/11-1/12, 3/12-10/12, 12/12, 5/13, 4/14, 6/14
Turkey Point 4	11,002	98.8	848	11666	-6.72	181	07-11	06-14	7/11, 7/12-9/12, 11/12-5/13, 5/14-6/14
Turkey Point 5	7,011	91.9	1166	7573	-6.11	150	07-11	06-14	2/14
West County 1	6,795	91.8	1208	7287	-5.36	146	07-11	06-14	7/13, 12/13-1/14
West County 2	6,866	89.3	1202	7275	-4.58	140	07-11	06-14	7/11, 6/13-7/13, 12/13-1/14
West County 3	6,704	89.1	1207	7421	-8.05	135	07-11	06-14	6/13-7/13, 12/13-2/14

DERIVATION OF WEIGHTING FACTORS

FLORIDA POWER & LIGHT COMPANY
PERIOD OF: JANUARY THROUGH DECEMBER, 2015PRODUCTION COSTING SIMULATION
FUEL COST (\$000)

Unit	Performance Indicator	At Target (1)	At Maximum Improvement (2)	Savings (3)	Factor (% Of Savings)
Ft. Myers 2	EAF	2,672,640	2,668,008	4,632	3.91
Ft. Myers 2	ANOHR	2,672,640	2,669,371	3,269	2.76
Martin 8	EAF	2,672,640	2,667,624	5,016	4.24
Martin 8	ANOHR	2,672,640	2,668,765	3,875	3.27
Manatee 3	EAF	2,672,640	2,668,306	4,334	3.66
Manatee 3	ANOHR	2,672,640	2,669,832	2,808	2.37
St. Lucie 1	EAF	2,672,640	2,662,310	10,330	8.72
St. Lucie 1	ANOHR	2,672,640	2,667,992	4,648	3.92
St. Lucie 2	EAF	2,672,640	2,664,131	8,509	7.19
St. Lucie 2	ANOHR	2,672,640	2,668,391	4,249	3.59
Turkey Point 3	EAF	2,672,640	2,664,157	8,483	7.16
Turkey Point 3	ANOHR	2,672,640	2,667,795	4,845	4.09
Turkey Point 4	EAF	2,672,640	2,663,298	9,342	7.89
Turkey Point 4	ANOHR	2,672,640	2,666,945	5,695	4.81
Turkey Point 5	EAF	2,672,640	2,667,095	5,545	4.68
Turkey Point 5	ANOHR	2,672,640	2,668,802	3,838	3.24
West County 1	EAF	2,672,640	2,667,282	5,358	4.52
West County 1	ANOHR	2,672,640	2,667,405	5,235	4.42
West County 2	EAF	2,672,640	2,666,931	5,709	4.82
West County 2	ANOHR	2,672,640	2,668,283	4,357	3.68
West County 3	EAF	2,672,640	2,668,675	3,965	3.35
West County 3	ANOHR	2,672,640	2,668,248	4,392	3.71
TOTAL				118,434	100.00

(1) FUEL ADJUSTMENT - ALL UNITS PERFORMANCE AT TARGET

(2) ALL OTHER UNITS PERFORMANCE AT TARGET

(3) EXPRESSED IN REPLACEMENT ENERGY COSTS.

ESTIMATED UNIT PERFORMANCE DATA

FLORIDA POWER & LIGHT

PERIOD OF: JANUARY THROUGH DECEMBER, 2015

	Ft. Myers 2	Jan '15	Feb '15	Mar '15	Apr '15	May '15	Jun '15
1	EAF (%)	94.1	94.1	94.1	62.2	65.3	49.7
2	EPOF (%)	0.0	0.0	0.0	33.9	30.6	47.2
3	EUOF (%)	5.9	5.9	5.9	3.9	4.1	3.1
4	EUOR (%)	19.6	17.2	8.2	7.3	8.1	4.9
5	PH	744	672	744	720	744	720
6	SH	225	232	535	388	377	456
7	RSH	519	440	209	164	367	264
8	UH	0	0	0	168	0	0
9	POH	0	0	0	168	0	0
10	FOH & EFOH	17	15	17	11	12	9
11	MOH & EMOH	27	25	27	18	19	14
12	Oper Mbtu	1,952,178	1,923,455	4,770,594	3,108,695	2,492,724	2,442,423
13	Net Gen (MWH)	273,376	266,665	672,104	428,018	332,186	316,992
14	ANOHR (Btu/KWH)	7,141	7,213	7,098	7,263	7,504	7,705
15	NOF (%)	87.9	83.1	90.8	79.8	63.7	50.3
16	NSC (MW)	1,383	1,383	1,383	1,383	1,383	1,383
17	ANOHR Equation	-14.99 x NOF + 8459					

	Ft. Myers 2	Jul '15	Aug '15	Sep '15	Oct '15	Nov '15	Dec '15	Total
1	EAF (%)	79.4	94.1	94.1	94.1	94.1	94.1	84.1
2	EPOF (%)	15.6	0.0	0.0	0.0	0.0	0.0	10.6
3	EUOF (%)	5.0	5.9	5.9	5.9	5.9	5.9	5.3
4	EUOR (%)	6.1	7.9	7.6	7.3	8.5	15.7	8.7
5	PH	744	744	720	744	720	744	8,760
6	SH	611	557	565	604	501	281	5,332
7	RSH	133	187	155	140	219	463	3260
8	UH	0	0	0	0	0	0	168
9	POH	0	0	0	0	0	0	168
10	FOH & EFOH	14	17	16	17	16	17	175
11	MOH & EMOH	23	27	27	27	27	27	289
12	Oper Mbtu	4,868,189	5,169,202	5,220,030	5,500,804	4,545,523	2,479,058	44,669,821
13	Net Gen (MWH)	669,443	735,620	741,903	778,930	643,113	348,378	6,206,728
14	ANOHR (Btu/KWH)	7,272	7,027	7,036	7,062	7,068	7,116	7,197
15	NOF (%)	79.2	95.5	94.9	93.2	92.8	89.6	84.2
16	NSC (MW)	1,383	1,383	1,383	1,383	1,383	1,383	1,383
17	ANOHR Equation	-14.99 x NOF + 8459						

ESTIMATED UNIT PERFORMANCE DATA

FLORIDA POWER & LIGHT

PERIOD OF: JANUARY THROUGH DECEMBER, 2015

	Manatee 3	Jan '15	Feb '15	Mar '15	Apr '15	May '15	Jun '15
1	EAF (%)	93.0	93.0	93.0	93.0	93.0	93.0
2	EPOF (%)	0.0	0.0	0.0	0.0	0.0	0.0
3	EUOF (%)	7.0	7.0	7.0	7.0	7.0	7.0
4	EUOR (%)	15.3	11.3	8.5	9.2	10.8	8.5
5	PH	744	672	744	720	744	720
6	SH	341	415	611	549	481	592
7	RSH	403	257	133	171	263	128
8	UH	0	0	0	0	0	0
9	POH	0	0	0	0	0	0
10	FOH & EFOH	15	14	15	15	15	15
11	MOH & EMOH	37	33	37	36	37	36
12	Oper Mbtu	2,444,924	2,784,145	4,227,165	3,829,036	3,461,858	4,164,491
13	Net Gen (MWH)	353,824	401,405	610,421	553,249	501,065	601,979
14	ANOHR (Btu/KWH)	6,910	6,936	6,925	6,921	6,909	6,918
15	NOF (%)	96.3	89.7	92.7	93.5	96.6	94.3
16	NSC (MW)	1,078	1,078	1,078	1,078	1,078	1,078
17	ANOHR Equation	-3.91 x NOF + 7287					

	Manatee 3	Jul '15	Aug '15	Sep '15	Oct '15	Nov '15	Dec '15	Total
1	EAF (%)	63.0	91.5	93.0	93.0	93.0	93.0	90.3
2	EPOF (%)	32.3	1.6	0.0	0.0	0.0	0.0	2.9
3	EUOF (%)	4.7	6.9	7.0	7.0	7.0	7.0	6.8
4	EUOR (%)	16.3	8.9	8.0	9.0	9.0	11.9	9.9
5	PH	744	744	720	744	720	744	8,760
6	SH	217	579	629	580	558	437	5,989
7	RSH	359	165	91	164	162	307	2603
8	UH	168	0	0	0	0	0	168
9	POH	168	0	0	0	0	0	168
10	FOH & EFOH	10	15	15	15	15	15	175
11	MOH & EMOH	25	36	36	37	36	37	420
12	Oper Mbtu	1,263,398	4,071,838	4,467,066	4,097,617	3,930,358	3,048,375	41,792,306
13	Net Gen (MWH)	180,873	588,586	646,090	592,398	568,135	440,453	6,038,478
14	ANOHR (Btu/KWH)	6,985	6,918	6,914	6,917	6,918	6,921	6,921
15	NOF (%)	77.3	94.3	95.3	94.7	94.4	93.5	93.5
16	NSC (MW)	1,078	1,078	1,078	1,078	1,078	1,078	1,078
17	ANOHR Equation	-3.91 x NOF + 7287						

ESTIMATED UNIT PERFORMANCE DATA

FLORIDA POWER & LIGHT

PERIOD OF: JANUARY THROUGH DECEMBER, 2015

	Martin 8	Jan '15	Feb '15	Mar '15	Apr '15	May '15	Jun '15
1	EAF (%)	75.9	29.6	75.9	92.3	92.3	92.3
2	EPOF (%)	17.7	67.9	17.7	0.0	0.0	0.0
3	EUOF (%)	6.4	2.5	6.4	7.7	7.7	7.7
4	EUOR (%)	10.2	10.6	7.6	7.7	7.7	7.7
5	PH	744	672	744	720	744	720
6	SH	464	158	624	720	744	720
7	RSH	280	130	120	0	0	0
8	UH	0	384	0	0	0	0
9	POH	0	384	0	0	0	0
10	FOH & EFOH	13	5	13	16	16	16
11	MOH & EMOH	34	12	34	40	41	40
12	Oper Mbtu	2,830,024	882,465	3,732,460	4,781,508	5,029,625	4,943,459
13	Net Gen (MWH)	406,905	126,319	536,119	690,670	727,350	715,510
14	ANOHR (Btu/KWH)	6,955	6,986	6,962	6,923	6,915	6,909
15	NOF (%)	78.9	72.0	77.3	86.3	88.0	89.4
16	NSC (MW)	1,111	1,111	1,111	1,111	1,111	1,111
17	ANOHR Equation	-4.42 x NOF + 7304					

	Martin 8	Jul '15	Aug '15	Sep '15	Oct '15	Nov '15	Dec '15	Total
1	EAF (%)	92.3	92.3	92.3	92.3	92.3	92.3	84.7
2	EPOF (%)	0.0	0.0	0.0	0.0	0.0	0.0	8.2
3	EUOF (%)	7.7	7.7	7.7	7.7	7.7	7.7	7.1
4	EUOR (%)	7.7	7.7	7.7	7.7	8.0	8.6	8.0
5	PH	744	744	720	744	720	744	8,760
6	SH	744	744	720	744	700	666	7,748
7	RSH	0	0	0	0	20	78	628
8	UH	0	0	0	0	0	0	384
9	POH	0	0	0	0	0	0	384
10	FOH & EFOH	16	16	16	16	16	16	175
11	MOH & EMOH	41	41	40	41	40	41	447
12	Oper Mbtu	5,143,244	5,134,705	5,006,518	5,114,428	4,691,760	4,222,682	51,521,311
13	Net Gen (MWH)	744,750	743,406	725,267	740,363	678,098	608,368	7,443,125
14	ANOHR (Btu/KWH)	6,906	6,907	6,903	6,908	6,919	6,941	6,922
15	NOF (%)	90.1	89.9	90.7	89.6	87.2	82.2	86.5
16	NSC (MW)	1,111	1,111	1,111	1,111	1,111	1,111	1,111
17	ANOHR Equation	-4.42 x NOF + 7304						

ESTIMATED UNIT PERFORMANCE DATA

FLORIDA POWER & LIGHT

PERIOD OF: JANUARY THROUGH DECEMBER, 2015

St. Lucie 1	Jan '15	Feb '15	Mar '15	Apr '15	May '15	Jun '15
1 EAF (%)	91.8	91.8	65.1	18.4	91.8	91.8
2 EPOF (%)	0.0	0.0	29.0	80.0	0.0	0.0
3 EUOF (%)	8.2	8.2	5.9	1.6	8.2	8.2
4 EUOR (%)	8.2	8.2	8.2	8.2	8.2	8.2
5 PH	744	672	744	720	744	720
6 SH	744	672	528	144	744	720
7 RSH	0	0	0	0	0	0
8 UH	0	0	216	576	0	0
9 POH	0	0	216	576	0	0
10 FOH & EFOH	35	32	25	7	35	34
11 MOH & EMOH	26	24	19	5	26	25
12 Oper Mbtu	7,547,125	6,816,773	5,356,057	1,436,269	7,420,784	7,181,399
13 Net Gen (MWH)	727,574	657,165	516,346	137,732	711,621	688,665
14 ANOHR (Btu/KWH)	10,373	10,373	10,373	10,428	10,428	10,428
15 NOF (%)	99.7	99.7	99.7	97.5	97.5	97.5
16 NSC (MW)	981	981	981	981	981	981
17 ANOHR Equation	-25.19 x NOF + 12884					

St. Lucie 1	Jul '15	Aug '15	Sep '15	Oct '15	Nov '15	Dec '15	Total
1 EAF (%)	91.8	91.8	91.8	91.8	91.8	91.8	83.5
2 EPOF (%)	0.0	0.0	0.0	0.0	0.0	0.0	9.0
3 EUOF (%)	8.2	8.2	8.2	8.2	8.2	8.2	7.5
4 EUOR (%)	8.2	8.2	8.2	8.2	8.2	8.2	8.2
5 PH	744	744	720	744	720	744	8,760
6 SH	744	744	720	744	720	744	7,968
7 RSH	0	0	0	0	0	0	0
8 UH	0	0	0	0	0	0	792
9 POH	0	0	0	0	0	0	792
10 FOH & EFOH	35	35	34	35	34	35	377
11 MOH & EMOH	26	26	25	26	25	26	280
12 Oper Mbtu	7,420,784	7,420,784	7,181,399	7,420,784	7,303,671	7,547,125	80,059,285
13 Net Gen (MWH)	711,621	711,621	688,665	711,621	704,104	727,574	7,694,309
14 ANOHR (Btu/KWH)	10,428	10,428	10,428	10,428	10,373	10,373	10,405
15 NOF (%)	97.5	97.5	97.5	97.5	99.7	99.7	98.4
16 NSC (MW)	981	981	981	981	981	981	981
17 ANOHR Equation	-25.19 x NOF + 12884						

ESTIMATED UNIT PERFORMANCE DATA

FLORIDA POWER & LIGHT

PERIOD OF: JANUARY THROUGH DECEMBER, 2015

St. Lucie 2	Jan '15	Feb '15	Mar '15	Apr '15	May '15	Jun '15
1 EAF (%)	93.0	93.0	93.0	93.0	93.0	93.0
2 EPOF (%)	0.0	0.0	0.0	0.0	0.0	0.0
3 EUOF (%)	7.0	7.0	7.0	7.0	7.0	7.0
4 EUOR (%)	7.0	7.0	7.0	7.0	7.0	7.0
5 PH	744	672	744	720	744	720
6 SH	744	672	744	720	744	720
7 RSH	0	0	0	0	0	0
8 UH	0	0	0	0	0	0
9 POH	0	0	0	0	0	0
10 FOH & EFOH	26	24	26	25	26	25
11 MOH & EMOH	26	24	26	25	26	25
12 Oper Mbtu	6,408,749	5,788,548	6,408,749	6,074,263	6,276,729	6,074,263
13 Net Gen (MWH)	623,844	563,472	623,844	589,677	609,332	589,677
14 ANOHR (Btu/KWH)	10,273	10,273	10,273	10,301	10,301	10,301
15 NOF (%)	99.8	99.8	99.8	97.5	97.5	97.5
16 NSC (MW)	840	840	840	840	840	840
17 ANOHR Equation	-11.92 x NOF + 11463					

St. Lucie 2	Jul '15	Aug '15	Sep '15	Oct '15	Nov '15	Dec '15	Total
1 EAF (%)	93.0	93.0	18.6	69.0	93.0	93.0	84.8
2 EPOF (%)	0.0	0.0	80.0	25.8	0.0	0.0	8.8
3 EUOF (%)	7.0	7.0	1.4	5.2	7.0	7.0	6.4
4 EUOR (%)	7.0	7.0	7.0	7.0	7.0	7.0	7.0
5 PH	744	744	720	744	720	744	8,760
6 SH	744	744	144	552	720	744	7,992
7 RSH	0	0	0	0	0	0	0
8 UH	0	0	576	192	0	0	768
9 POH	0	0	576	192	0	0	768
10 FOH & EFOH	26	26	5	19	25	26	280
11 MOH & EMOH	26	26	5	19	25	26	280
12 Oper Mbtu	6,276,729	6,276,729	1,214,859	4,656,958	6,202,016	6,408,749	68,066,416
13 Net Gen (MWH)	609,332	609,332	117,936	452,088	603,720	623,844	6,616,098
14 ANOHR (Btu/KWH)	10,301	10,301	10,301	10,301	10,273	10,273	10,288
15 NOF (%)	97.5	97.5	97.5	97.5	99.8	99.8	98.6
16 NSC (MW)	840	840	840	840	840	840	840
17 ANOHR Equation	-11.92 x NOF + 11463						

ESTIMATED UNIT PERFORMANCE DATA

FLORIDA POWER & LIGHT

PERIOD OF: JANUARY THROUGH DECEMBER, 2015

Turkey Point 3		Jan '15	Feb '15	Mar '15	Apr '15	May '15	Jun '15
1	EAF (%)	90.6	90.6	90.6	90.6	90.6	90.6
2	EPOF (%)	0.0	0.0	0.0	0.0	0.0	0.0
3	EUOF (%)	9.4	9.4	9.4	9.4	9.4	9.4
4	EUOR (%)	9.4	9.4	9.4	9.4	9.4	9.4
5	PH	744	672	744	720	744	720
6	SH	744	672	744	720	744	720
7	RSH	0	0	0	0	0	0
8	UH	0	0	0	0	0	0
9	POH	0	0	0	0	0	0
10	FOH & EFOH	44	40	44	42	44	42
11	MOH & EMOH	26	23	26	25	26	25
12	Oper Mbtu	6,767,777	6,112,809	6,767,777	6,351,859	6,563,585	6,351,859
13	Net Gen (MWH)	608,613	549,713	608,613	569,316	588,293	569,316
14	ANOHR (Btu/KWH)	11,120	11,120	11,120	11,157	11,157	11,157
15	NOF (%)	100.9	100.9	100.9	97.5	97.5	97.5
16	NSC (MW)	811	811	811	811	811	811
17	ANOHR Equation	-10.96 x NOF + 12226					

Turkey Point 3		Jul '15	Aug '15	Sep '15	Oct '15	Nov '15	Dec '15	Total
1	EAF (%)	90.6	90.6	90.6	52.7	39.2	90.6	83.2
2	EPOF (%)	0.0	0.0	0.0	41.9	56.7	0.0	8.2
3	EUOF (%)	9.4	9.4	9.4	5.4	4.1	9.4	8.6
4	EUOR (%)	9.4	9.4	9.4	9.4	9.4	9.4	9.4
5	PH	744	744	720	744	720	744	8,760
6	SH	744	744	720	432	312	744	8,040
7	RSH	0	0	0	0	0	0	0
8	UH	0	0	0	312	408	0	720
9	POH	0	0	0	312	408	0	720
10	FOH & EFOH	44	44	42	25	18	44	473
11	MOH & EMOH	26	26	25	15	11	26	280
12	Oper Mbtu	6,563,585	6,563,585	6,351,859	3,811,131	2,838,080	6,767,777	71,818,786
13	Net Gen (MWH)	588,293	588,293	569,316	341,591	255,223	608,613	6,445,193
14	ANOHR (Btu/KWH)	11,157	11,157	11,157	11,157	11,120	11,120	11,143
15	NOF (%)	97.5	97.5	97.5	97.5	100.9	100.9	98.8
16	NSC (MW)	811	811	811	811	811	811	811
17	ANOHR Equation	-10.96 x NOF + 12226						

ESTIMATED UNIT PERFORMANCE DATA

FLORIDA POWER & LIGHT

PERIOD OF: JANUARY THROUGH DECEMBER, 2015

	Turkey Point 4	Jan '15	Feb '15	Mar '15	Apr '15	May '15	Jun '15
1	EAF (%)	93.6	93.6	93.6	93.6	93.6	93.6
2	EPOF (%)	0.0	0.0	0.0	0.0	0.0	0.0
3	EUOF (%)	6.4	6.4	6.4	6.4	6.4	6.4
4	EUOR (%)	6.4	6.4	6.4	6.4	6.4	6.4
5	PH	744	672	744	720	744	720
6	SH	744	672	744	720	744	720
7	RSH	0	0	0	0	0	0
8	UH	0	0	0	0	0	0
9	POH	0	0	0	0	0	0
10	FOH & EFOH	24	22	24	23	24	23
11	MOH & EMOH	24	22	24	23	24	23
12	Oper Mbtu	6,759,773	6,105,620	6,759,773	6,346,102	6,557,645	6,346,102
13	Net Gen (MWH)	615,140	555,612	615,140	576,342	595,554	576,342
14	ANOHR (Btu/KWH)	10,989	10,989	10,989	11,011	11,011	11,011
15	NOF (%)	100.7	100.7	100.7	97.5	97.5	97.5
16	NSC (MW)	821	821	821	821	821	821
17	ANOHR Equation	-6.72 x NOF + 11666					

	Turkey Point 4	Jul '15	Aug '15	Sep '15	Oct '15	Nov '15	Dec '15	Total
1	EAF (%)	93.6	93.6	93.6	93.6	93.6	93.6	93.6
2	EPOF (%)	0.0	0.0	0.0	0.0	0.0	0.0	0.0
3	EUOF (%)	6.4	6.4	6.4	6.4	6.4	6.4	6.4
4	EUOR (%)	6.4	6.4	6.4	6.4	6.4	6.4	6.4
5	PH	744	744	720	744	720	744	8,760
6	SH	744	744	720	744	720	744	8,760
7	RSH	0	0	0	0	0	0	0
8	UH	0	0	0	0	0	0	0
9	POH	0	0	0	0	0	0	0
10	FOH & EFOH	24	24	23	24	23	24	280
11	MOH & EMOH	24	24	23	24	23	24	280
12	Oper Mbtu	6,557,645	6,557,645	6,346,102	6,557,645	6,541,719	6,759,773	78,197,496
13	Net Gen (MWH)	595,554	595,554	576,342	595,554	595,297	615,140	7,107,571
14	ANOHR (Btu/KWH)	11,011	11,011	11,011	11,011	10,989	10,989	11,002
15	NOF (%)	97.5	97.5	97.5	97.5	100.7	100.7	98.8
16	NSC (MW)	821	821	821	821	821	821	821
17	ANOHR Equation	-6.72 x NOF + 11666						

ESTIMATED UNIT PERFORMANCE DATA

FLORIDA POWER & LIGHT

PERIOD OF: JANUARY THROUGH DECEMBER, 2015

	Turkey Point 5	Jan '15	Feb '15	Mar '15	Apr '15	May '15	Jun '15
1	EAF (%)	93.3	93.3	93.3	93.3	93.3	66.1
2	EPOF (%)	0.0	0.0	0.0	0.0	0.0	29.2
3	EUOF (%)	6.7	6.7	6.7	6.7	6.7	4.7
4	EUOR (%)	14.6	11.7	10.1	7.2	8.1	7.1
5	PH	744	672	744	720	744	720
6	SH	340	381	492	666	608	477
7	RSH	404	291	252	54	136	243
8	UH	0	0	0	0	0	0
9	POH	0	0	0	0	0	0
10	FOH & EFOH	15	14	15	15	15	10
11	MOH & EMOH	34	31	34	33	34	24
12	Oper Mbtu	2,473,940	2,600,767	3,673,628	4,762,971	4,516,620	3,325,359
13	Net Gen (MWH)	352,614	368,694	524,804	677,810	644,863	472,285
14	ANOHR (Btu/KWH)	7,016	7,054	7,000	7,027	7,004	7,041
15	NOF (%)	91.1	85.0	93.7	89.4	93.2	87.0
16	NSC (MW)	1,138	1,138	1,138	1,138	1,138	1,138
17	ANOHR Equation	-6.11 x NOF + 7573					

	Turkey Point 5	Jul '15	Aug '15	Sep '15	Oct '15	Nov '15	Dec '15	Total
1	EAF (%)	93.3	93.3	93.3	93.3	93.3	93.3	91.1
2	EPOF (%)	0.0	0.0	0.0	0.0	0.0	0.0	2.4
3	EUOF (%)	6.7	6.7	6.7	6.7	6.7	6.7	6.5
4	EUOR (%)	7.2	6.7	6.9	6.9	35.0	12.9	9.0
5	PH	744	744	720	744	720	744	8,760
6	SH	692	744	692	716	137	383	6,328
7	RSH	52	0	28	28	583	361	2432
8	UH	0	0	0	0	0	0	0
9	POH	0	0	0	0	0	0	0
10	FOH & EFOH	15	15	15	15	15	15	175
11	MOH & EMOH	34	34	33	34	33	34	394
12	Oper Mbtu	5,172,720	5,566,851	5,204,527	5,307,696	995,782	2,810,850	46,411,895
13	Net Gen (MWH)	738,960	795,378	743,929	757,701	141,910	400,920	6,619,868
14	ANOHR (Btu/KWH)	7,000	6,999	6,996	7,005	7,017	7,011	7,011
15	NOF (%)	93.8	93.9	94.5	93.0	91.0	92.0	91.9
16	NSC (MW)	1,138	1,138	1,138	1,138	1,138	1,138	1,138
17	ANOHR Equation	-6.11 x NOF + 7573						

ESTIMATED UNIT PERFORMANCE DATA

FLORIDA POWER & LIGHT

PERIOD OF: JANUARY THROUGH DECEMBER, 2015

West County 1	Jan '15	Feb '15	Mar '15	Apr '15	May '15	Jun '15
1 EAF (%)	92.3	92.3	62.5	92.3	92.3	92.3
2 EPOF (%)	0.0	0.0	32.3	0.0	0.0	0.0
3 EUOF (%)	7.7	7.7	5.2	7.7	7.7	7.7
4 EUOR (%)	8.4	7.7	8.4	7.7	7.7	7.7
5 PH	744	672	744	720	744	720
6 SH	684	672	462	720	744	720
7 RSH	60	0	42	0	0	0
8 UH	0	0	240	0	0	0
9 POH	0	0	240	0	0	0
10 FOH & EFOH	15	14	10	15	15	15
11 MOH & EMOH	42	38	29	41	42	41
12 Oper Mbtu	5,073,075	4,835,130	3,352,066	5,173,902	5,422,733	5,346,124
13 Net Gen (MWH)	747,800	710,944	493,241	760,756	798,165	788,049
14 ANOHR (Btu/KWH)	6,784	6,801	6,796	6,801	6,794	6,784
15 NOF (%)	93.8	90.7	91.6	90.6	92.0	93.9
16 NSC (MW)	1,166	1,166	1,166	1,166	1,166	1,166
17 ANOHR Equation	-5.36 x NOF + 7287					

West County 1	Jul '15	Aug '15	Sep '15	Oct '15	Nov '15	Dec '15	Total
1 EAF (%)	92.3	92.3	92.3	92.3	92.3	92.3	89.8
2 EPOF (%)	0.0	0.0	0.0	0.0	0.0	0.0	2.7
3 EUOF (%)	7.7	7.7	7.7	7.7	7.7	7.7	7.5
4 EUOR (%)	7.7	7.7	7.7	7.7	7.9	7.8	7.8
5 PH	744	744	720	744	720	744	8,760
6 SH	744	744	720	744	702	736	8,392
7 RSH	0	0	0	0	18	8	128
8 UH	0	0	0	0	0	0	240
9 POH	0	0	0	0	0	0	240
10 FOH & EFOH	15	15	15	15	15	15	175
11 MOH & EMOH	42	42	41	42	41	42	482
12 Oper Mbtu	5,434,414	5,449,635	5,270,875	5,377,796	5,125,060	5,181,010	61,044,309
13 Net Gen (MWH)	800,002	802,479	776,156	791,085	754,462	760,571	8,983,710
14 ANOHR (Btu/KWH)	6,793	6,791	6,791	6,798	6,793	6,812	6,795
15 NOF (%)	92.2	92.5	92.5	91.2	92.2	88.6	91.8
16 NSC (MW)	1,166	1,166	1,166	1,166	1,166	1,166	1,166
17 ANOHR Equation	-5.36 x NOF + 7287						

ESTIMATED UNIT PERFORMANCE DATA

FLORIDA POWER & LIGHT

PERIOD OF: JANUARY THROUGH DECEMBER, 2015

	West County 2	Jan '15	Feb '15	Mar '15	Apr '15	May '15	Jun '15
1	EAF (%)	90.5	90.5	70.0	90.5	90.5	90.5
2	EPOF (%)	0.0	0.0	22.6	0.0	0.0	0.0
3	EUOF (%)	9.5	9.5	7.4	9.5	9.5	9.5
4	EUOR (%)	9.7	9.6	9.6	9.5	9.6	9.5
5	PH	744	672	744	720	744	720
6	SH	728	664	569	720	736	720
7	RSH	16	8	7	0	8	0
8	UH	0	0	168	0	0	0
9	POH	0	0	168	0	0	0
10	FOH & EFOH	17	15	13	17	17	17
11	MOH & EMOH	54	49	42	52	54	52
12	Oper Mbtu	5,287,587	4,672,397	4,039,309	5,237,634	5,411,057	5,362,462
13	Net Gen (MWH)	771,235	680,116	588,306	763,949	789,820	783,413
14	ANOHR (Btu/KWH)	6,856	6,870	6,866	6,856	6,851	6,845
15	NOF (%)	91.4	88.4	89.2	91.5	92.6	93.9
16	NSC (MW)	1,159	1,159	1,159	1,159	1,159	1,159
17	ANOHR Equation	-4.58 x NOF + 7275					

	West County 2	Jul '15	Aug '15	Sep '15	Oct '15	Nov '15	Dec '15	Total
1	EAF (%)	90.5	90.5	90.5	25.3	37.2	90.5	78.8
2	EPOF (%)	0.0	0.0	0.0	72.0	58.9	0.0	12.9
3	EUOF (%)	9.5	9.5	9.5	2.7	3.9	9.5	8.3
4	EUOR (%)	9.5	9.5	9.5	7.5	9.7	9.5	9.5
5	PH	744	744	720	744	720	744	8,760
6	SH	744	744	720	263	292	744	7,644
7	RSH	0	0	0	97	164	0	300
8	UH	0	0	0	384	264	0	816
9	POH	0	0	0	384	264	0	816
10	FOH & EFOH	17	17	17	5	7	17	175
11	MOH & EMOH	54	54	52	15	21	54	552
12	Oper Mbtu	5,593,147	5,447,806	5,275,601	1,273,202	1,581,109	5,137,543	54,344,500
13	Net Gen (MWH)	817,592	794,952	769,936	181,834	226,910	746,953	7,915,016
14	ANOHR (Btu/KWH)	6,841	6,853	6,852	7,002	6,968	6,878	6,866
15	NOF (%)	94.8	92.2	92.3	59.7	67.0	86.6	89.3
16	NSC (MW)	1,159	1,159	1,159	1,159	1,159	1,159	1,159
17	ANOHR Equation	-4.58 x NOF + 7275						

ESTIMATED UNIT PERFORMANCE DATA

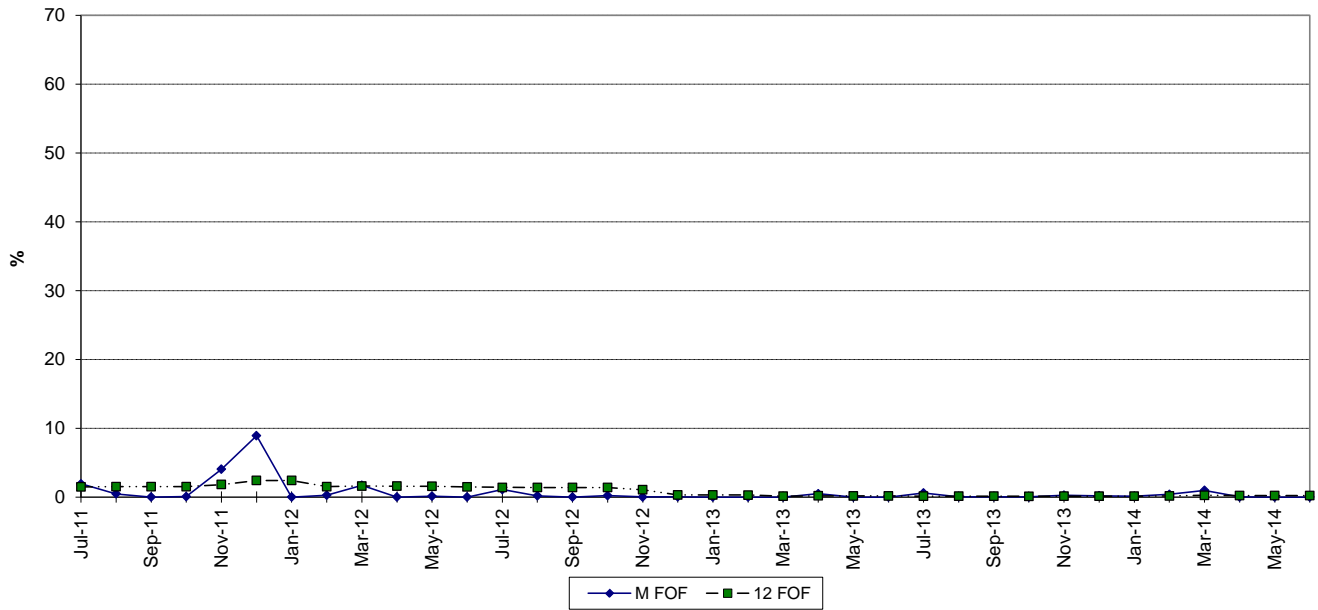
FLORIDA POWER & LIGHT

PERIOD OF: JANUARY THROUGH DECEMBER, 2015

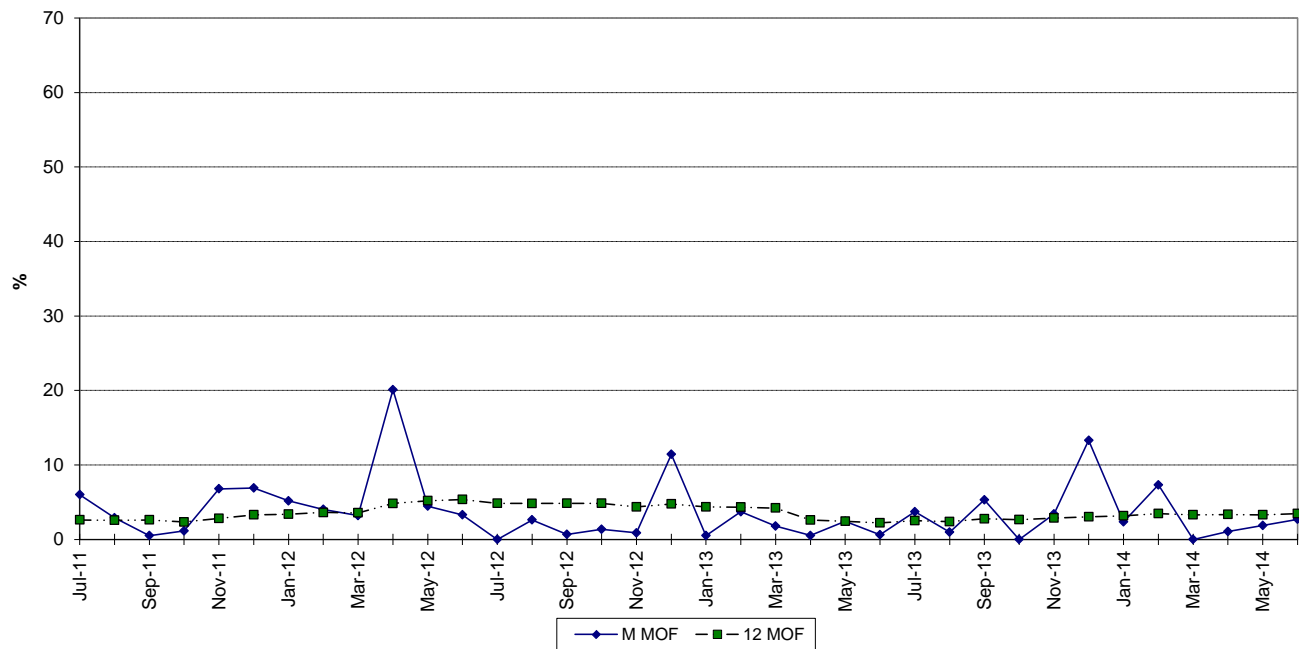
West County 3	Jan '15	Feb '15	Mar '15	Apr '15	May '15	Jun '15
1 EAF (%)	94.8	94.8	66.3	94.8	94.8	94.8
2 EPOF (%)	0.0	0.0	30.1	0.0	0.0	0.0
3 EUOF (%)	5.2	5.2	3.6	5.2	5.2	5.2
4 EUOR (%)	7.7	6.1	5.6	5.2	5.2	5.2
5 PH	744	672	744	720	744	720
6 SH	496	566	478	712	744	720
7 RSH	248	106	98	8	0	0
8 UH	0	0	168	0	0	0
9 POH	0	0	168	0	0	0
10 FOH & EFOH	16	14	11	15	16	15
11 MOH & EMOH	23	21	16	22	23	22
12 Oper Mbtu	3,646,835	3,944,038	3,168,167	4,947,760	5,236,600	5,167,701
13 Net Gen (MWH)	547,655	588,399	469,915	737,921	782,049	773,608
14 ANOHR (Btu/KWH)	6,659	6,703	6,742	6,705	6,696	6,680
15 NOF (%)	94.7	89.2	84.3	88.9	90.1	92.1
16 NSC (MW)	1,166	1,166	1,166	1,166	1,166	1,166
17 ANOHR Equation	-8.05 x NOF + 7421					

West County 3	Jul '15	Aug '15	Sep '15	Oct '15	Nov '15	Dec '15	Total
1 EAF (%)	94.8	94.8	67.4	92.7	94.8	94.8	90.0
2 EPOF (%)	0.0	0.0	28.9	2.2	0.0	0.0	5.1
3 EUOF (%)	5.2	5.2	3.7	5.1	5.2	5.2	4.9
4 EUOR (%)	5.2	5.2	4.3	5.2	5.9	6.6	5.5
5 PH	744	744	720	744	720	744	8,760
6 SH	744	744	612	720	632	581	7,749
7 RSH	0	0	108	24	88	163	843
8 UH	0	0	0	0	0	0	168
9 POH	0	0	0	0	0	0	168
10 FOH & EFOH	16	16	11	15	15	16	175
11 MOH & EMOH	23	23	16	22	22	23	254
12 Oper Mbtu	5,407,535	5,413,062	3,395,950	5,123,609	4,448,968	4,022,113	53,950,319
13 Net Gen (MWH)	810,968	811,797	494,820	766,319	664,521	599,510	8,047,482
14 ANOHR (Btu/KWH)	6,668	6,668	6,863	6,686	6,695	6,709	6,704
15 NOF (%)	93.5	93.6	69.3	91.3	90.2	88.5	89.1
16 NSC (MW)	1,166	1,166	1,166	1,166	1,166	1,166	1,166
17 ANOHR Equation	-8.05 x NOF + 7421						

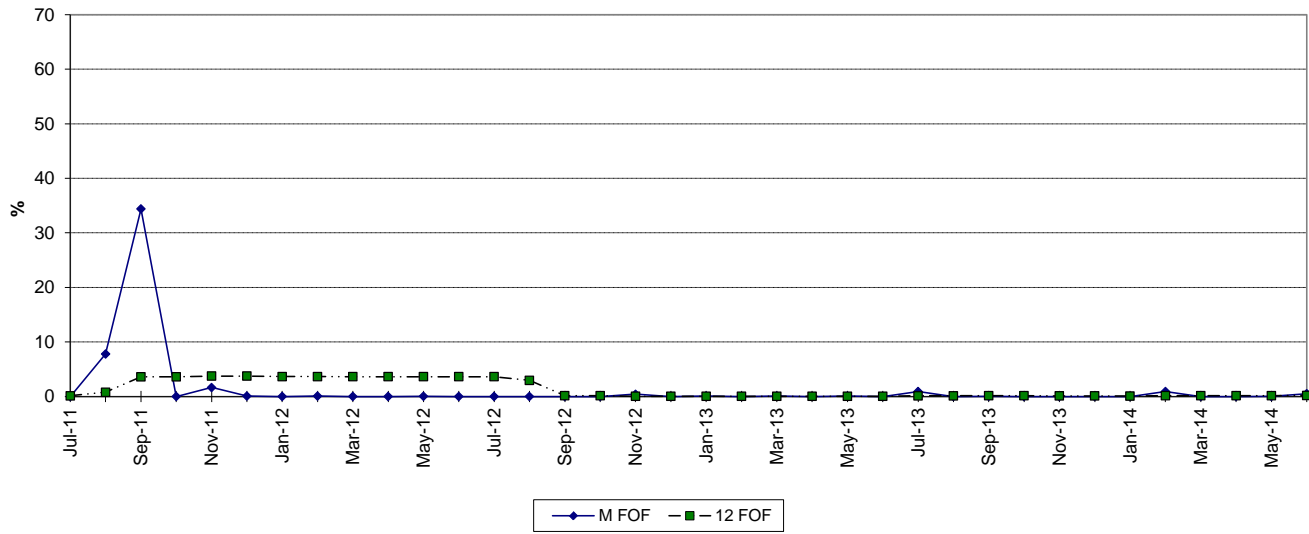
FT. MYERS 2 FORCED OUTAGE FACTOR



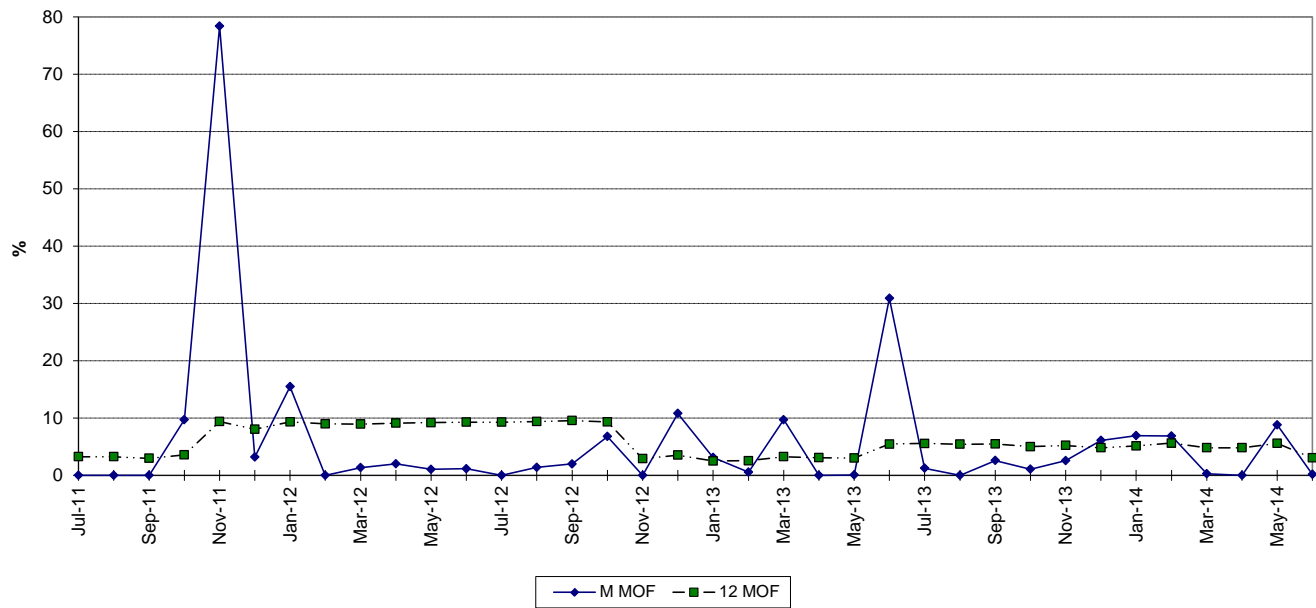
MAINTENANCE OUTAGE FACTOR



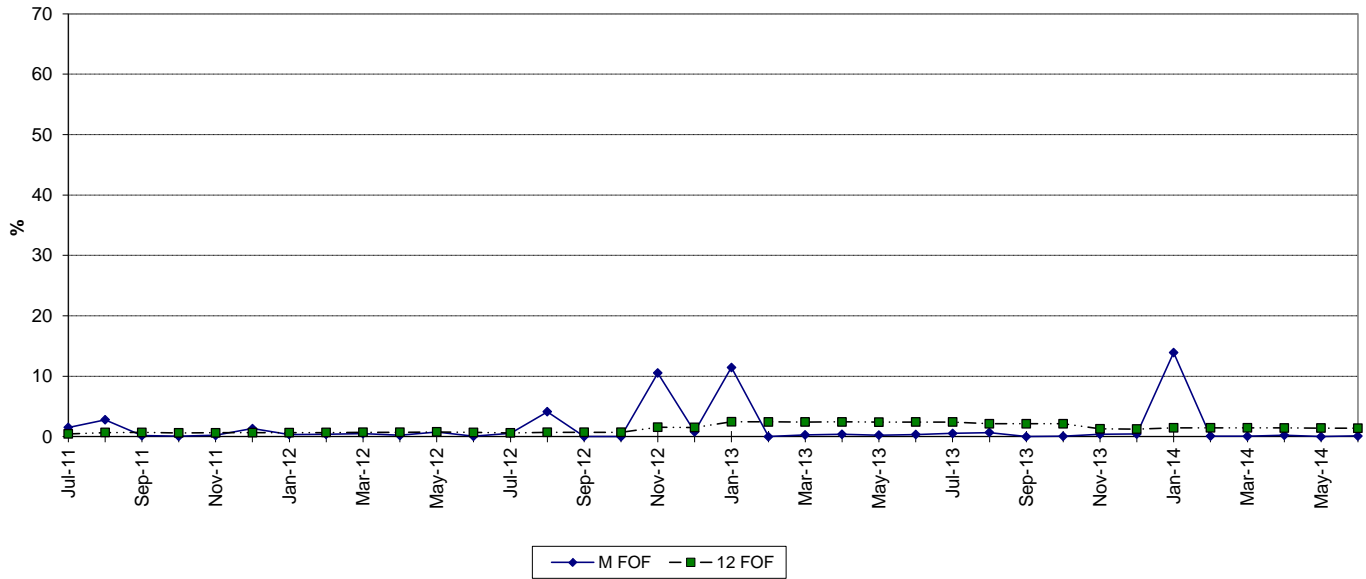
MANATEE 3 FORCED OUTAGE FACTOR



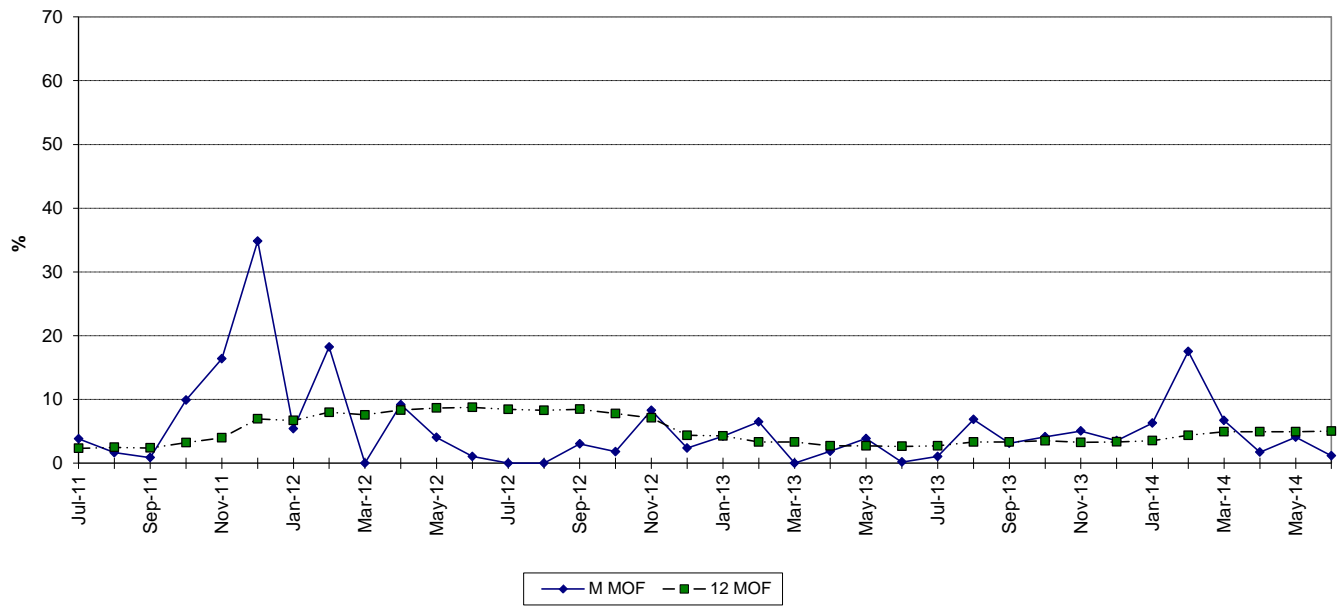
MAINTENANCE OUTAGE FACTOR



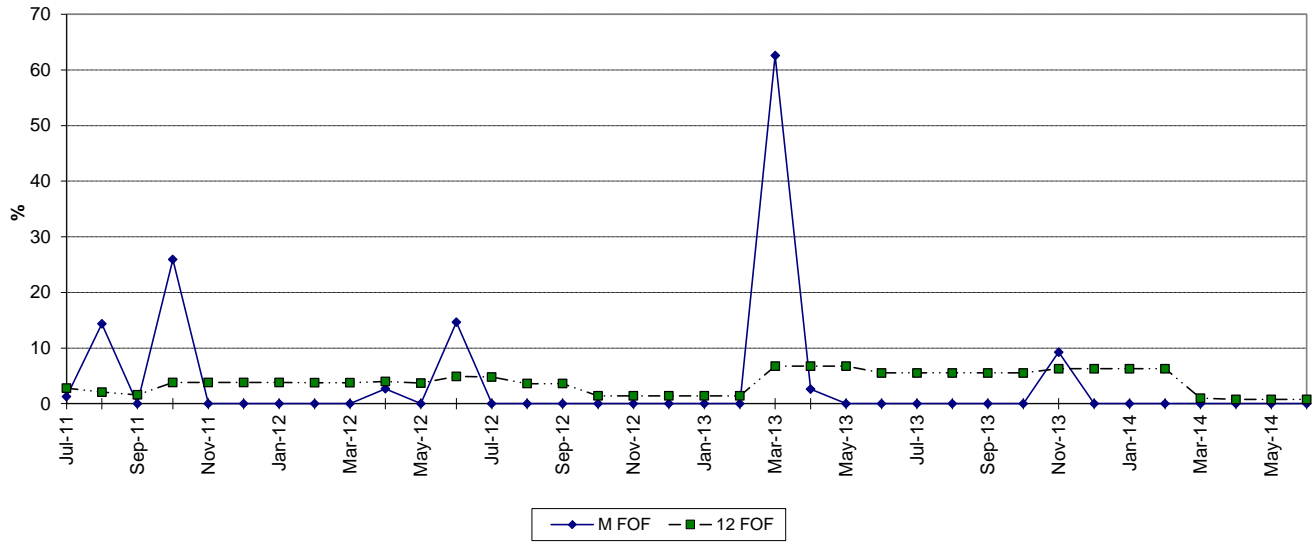
MARTIN 8 FORCED OUTAGE FACTOR



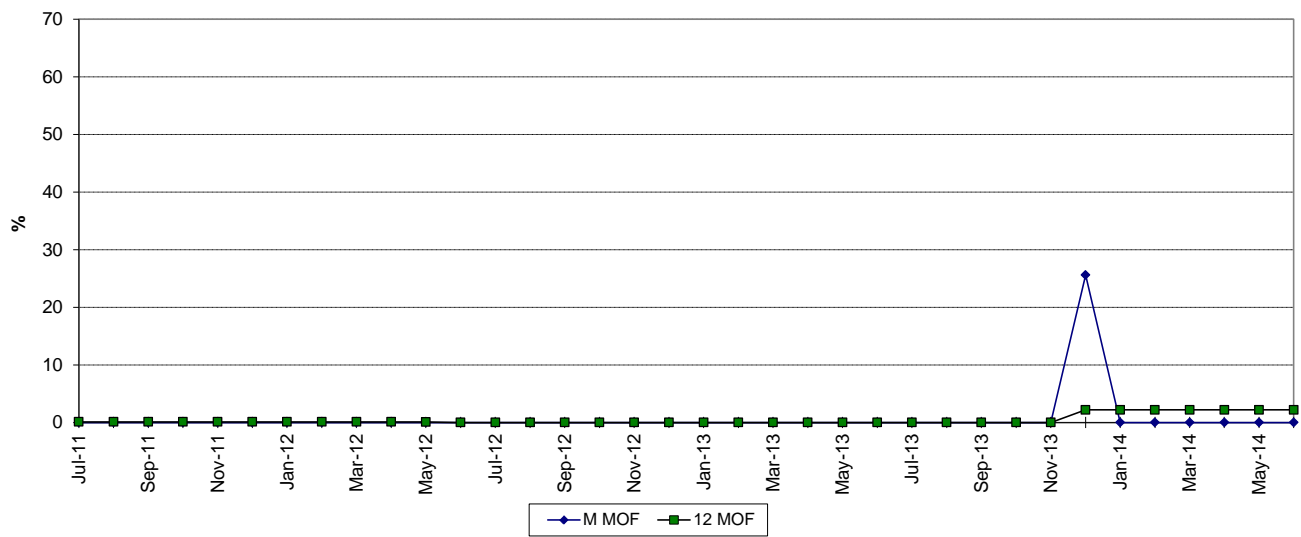
MAINTENANCE OUTAGE FACTOR



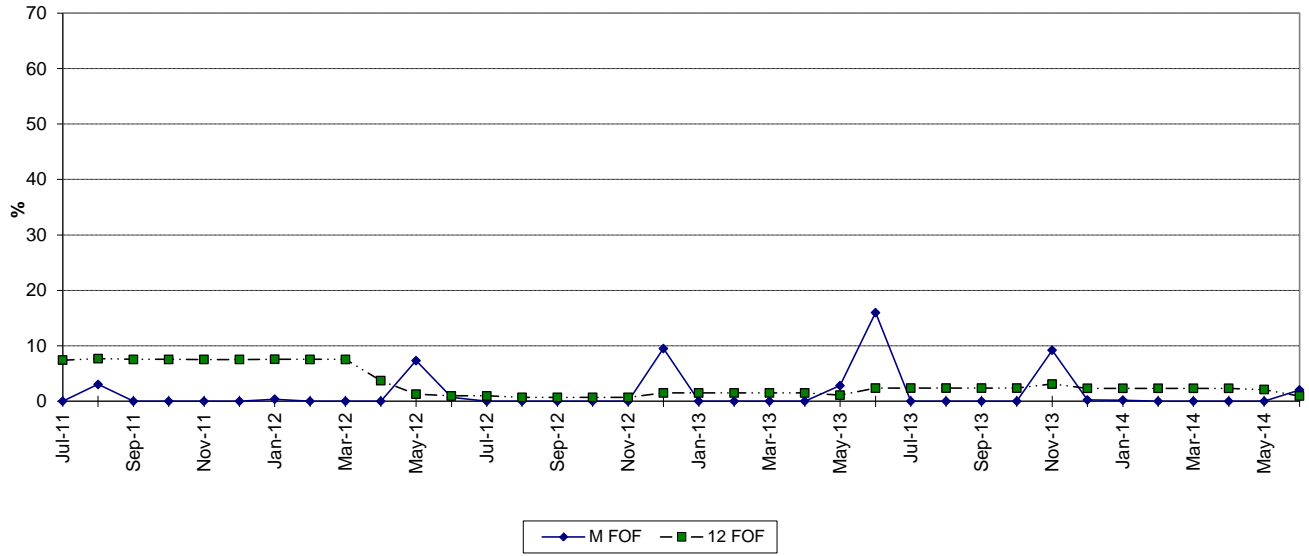
ST. LUCIE 1 FORCED OUTAGE FACTOR



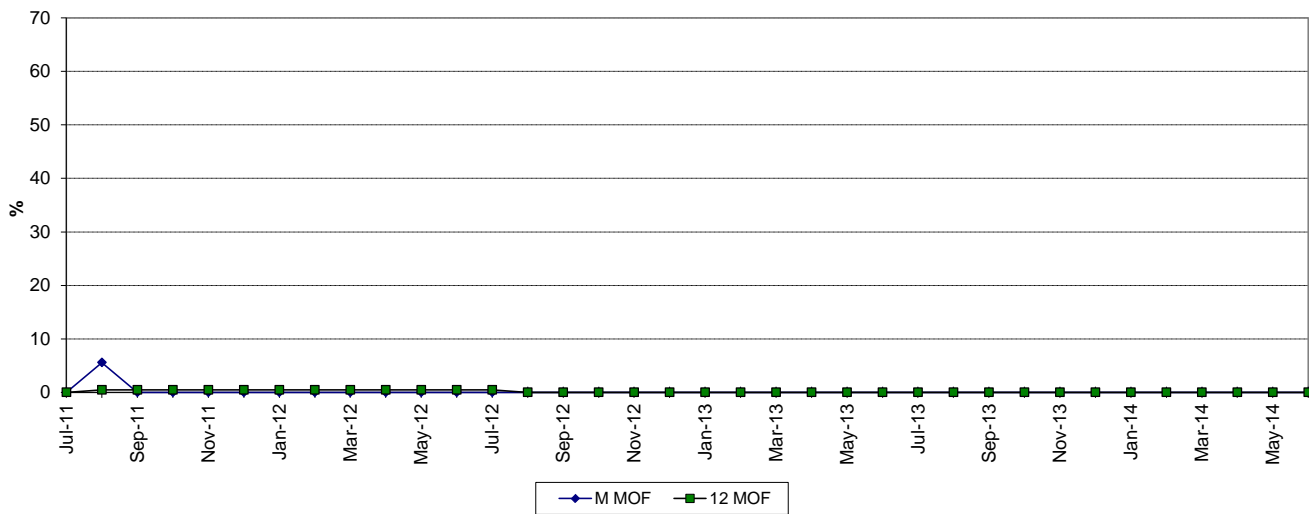
MAINTENANCE OUTAGE FACTOR



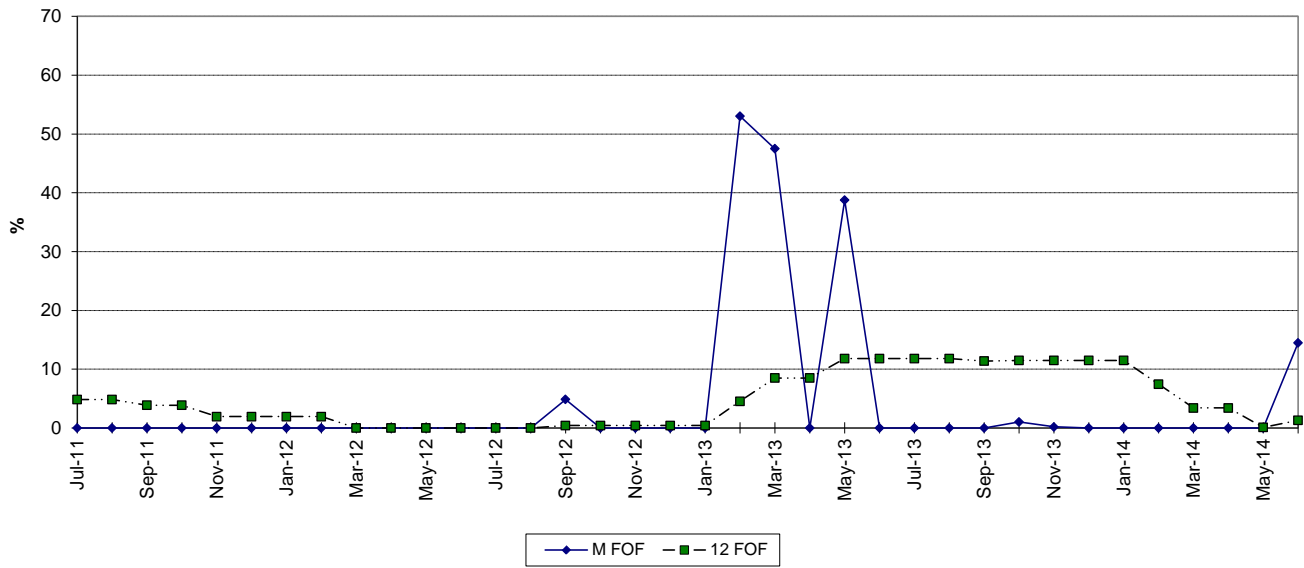
ST. LUCIE 2 FORCED OUTAGE FACTOR



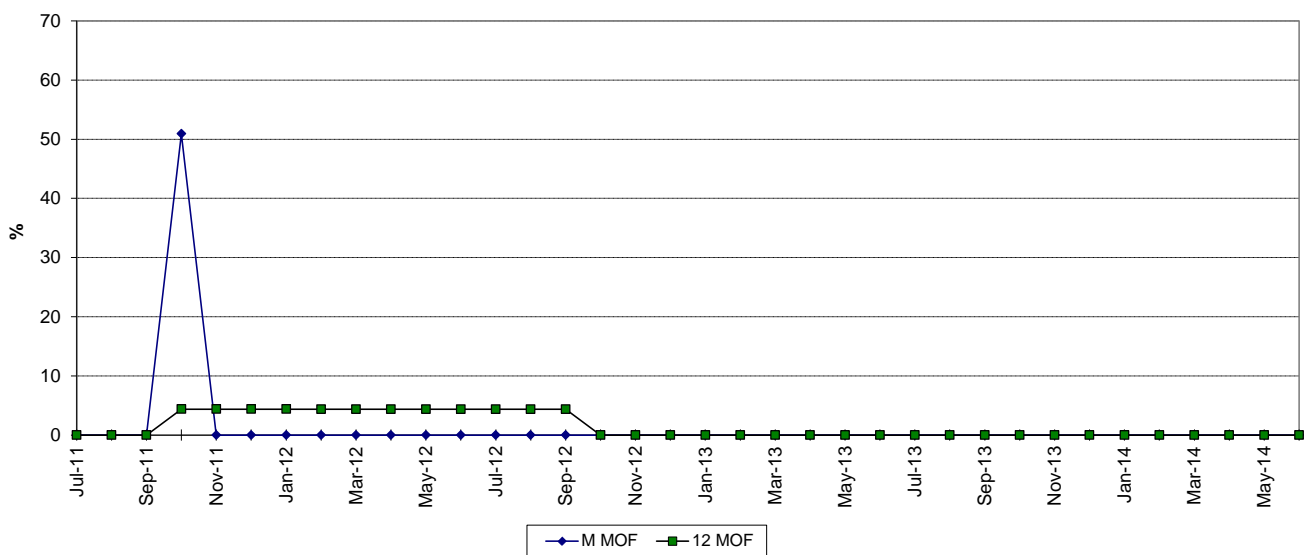
MAINTENANCE OUTAGE FACTOR



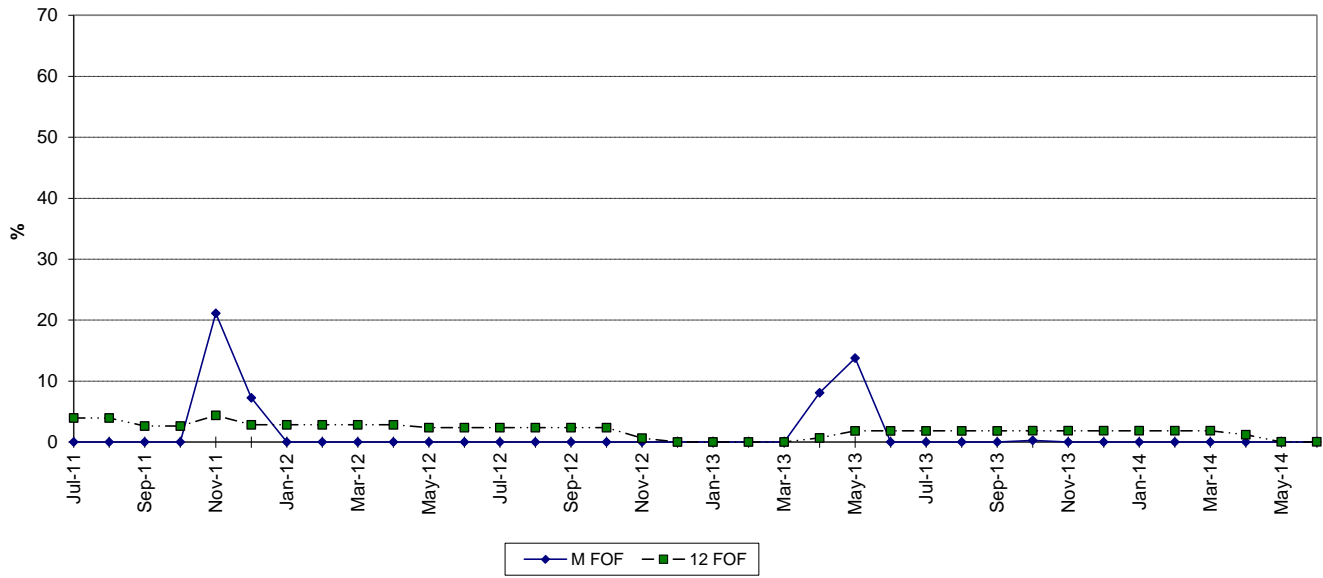
TURKEY POINT 3 FORCED OUTAGE FACTOR



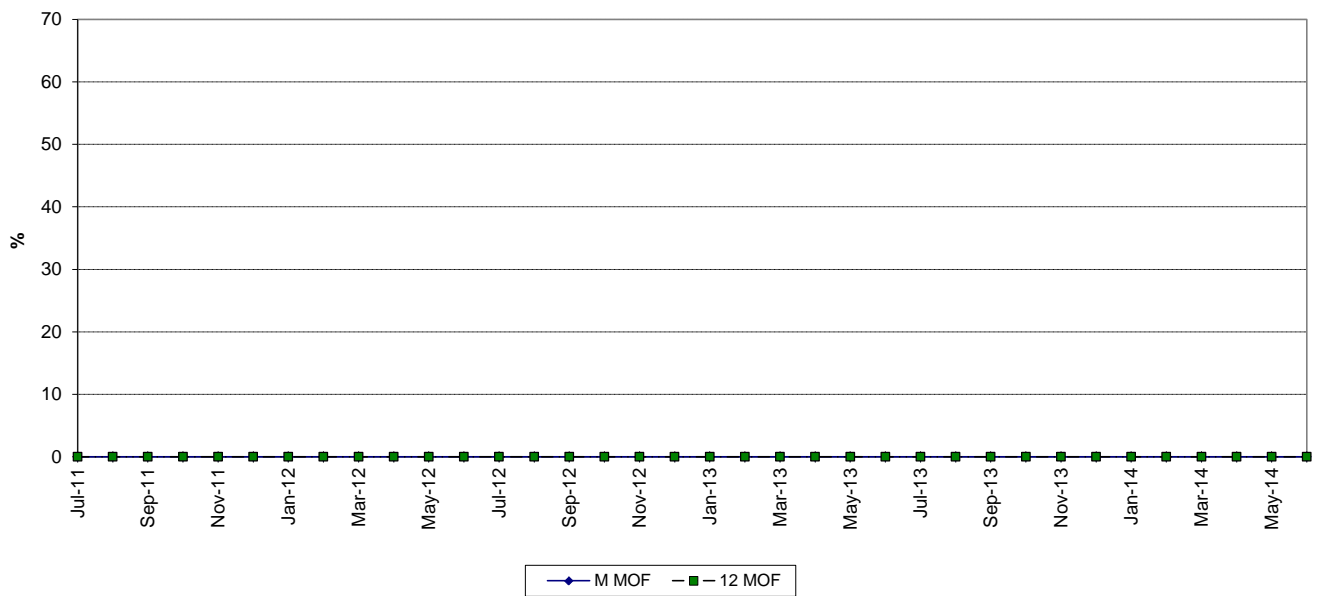
MAINTENANCE OUTAGE FACTOR



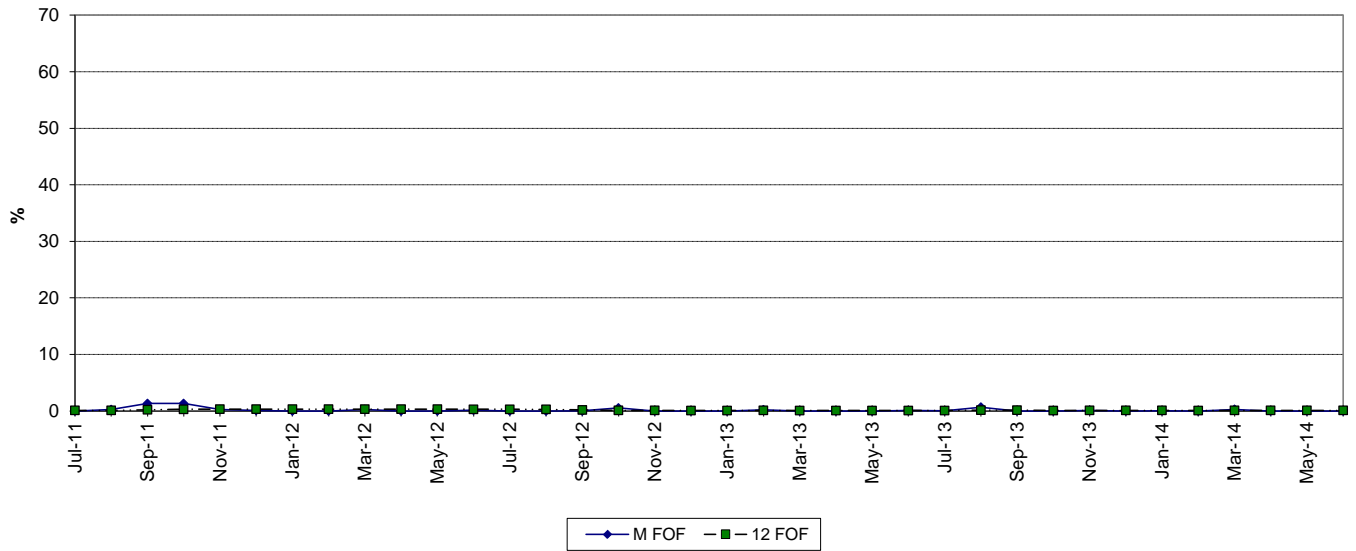
TURKEY POINT 4 FORCED OUTAGE FACTOR



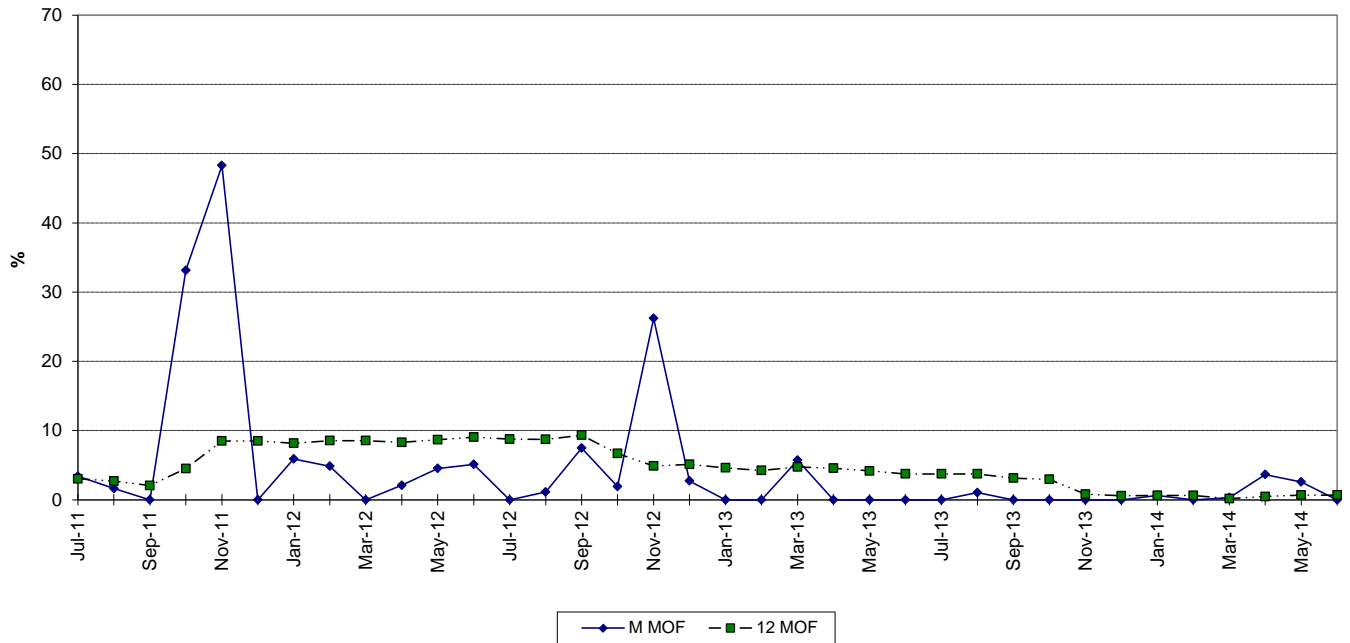
MAINTENANCE OUTAGE FACTOR



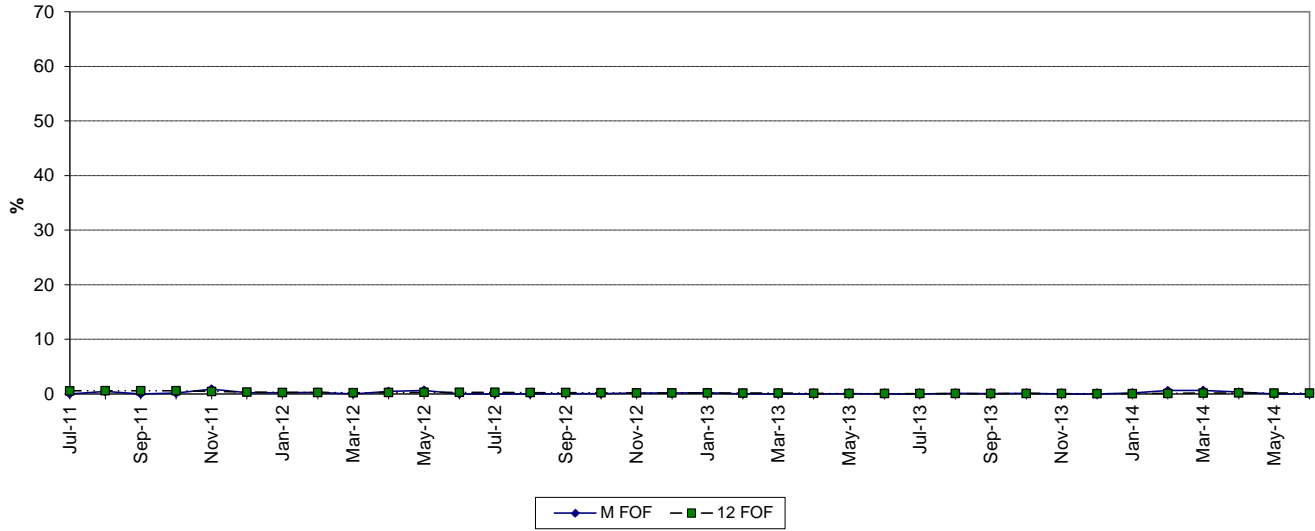
TURKEY POINT 5 FORCED OUTAGE FACTOR



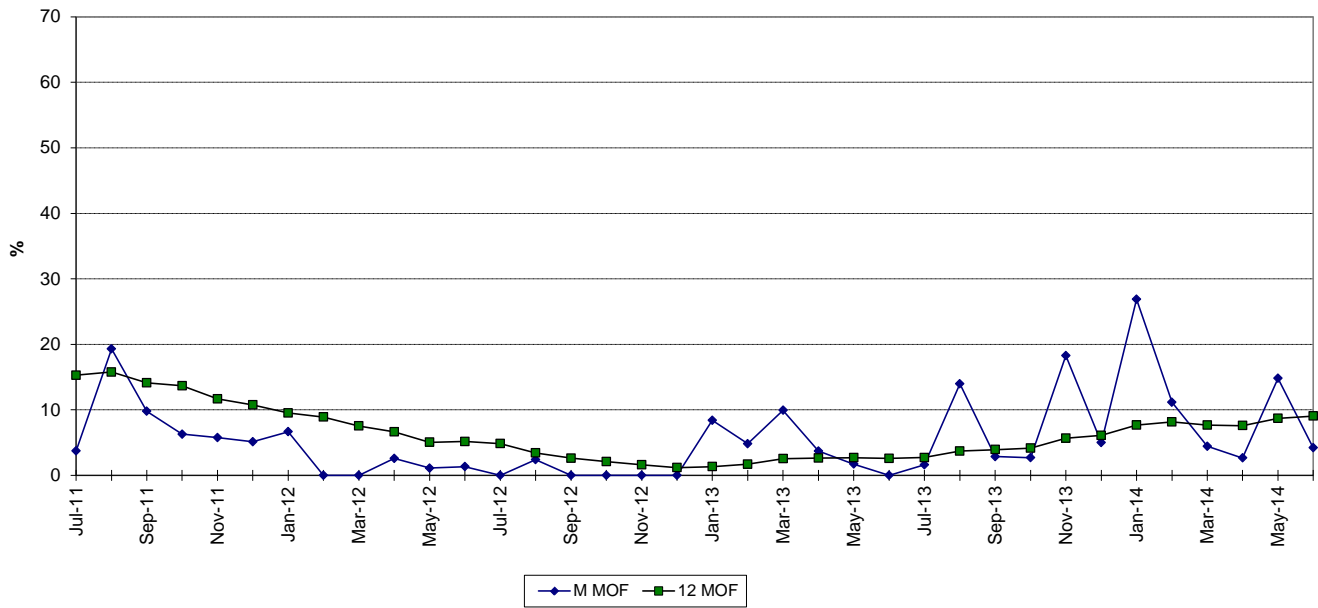
MAINTENANCE OUTAGE FACTOR



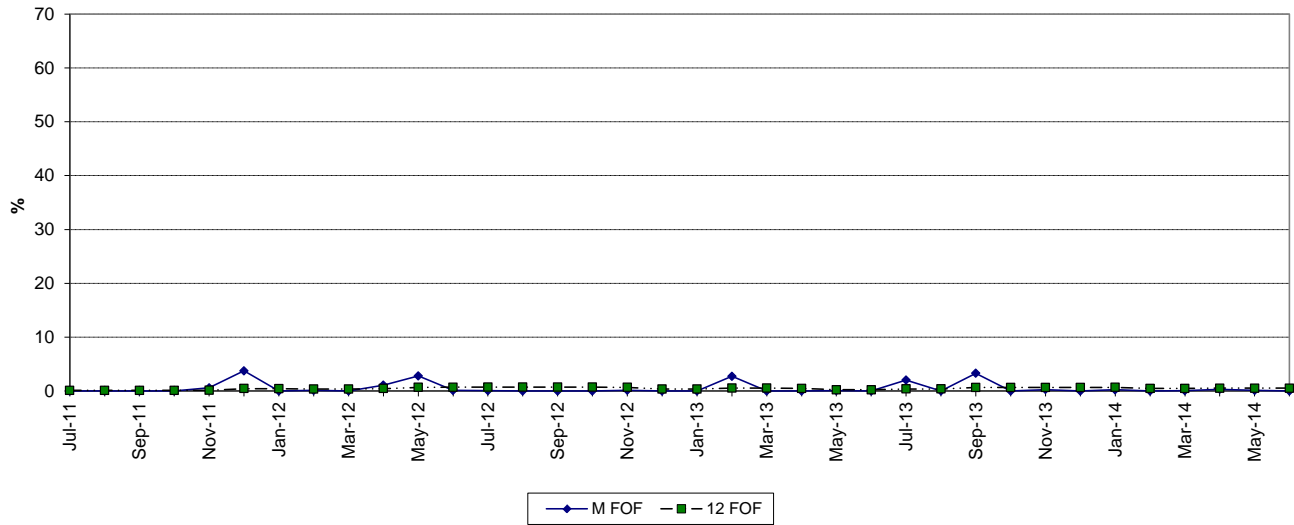
WEST COUNTY 1 FORCED OUTAGE FACTOR



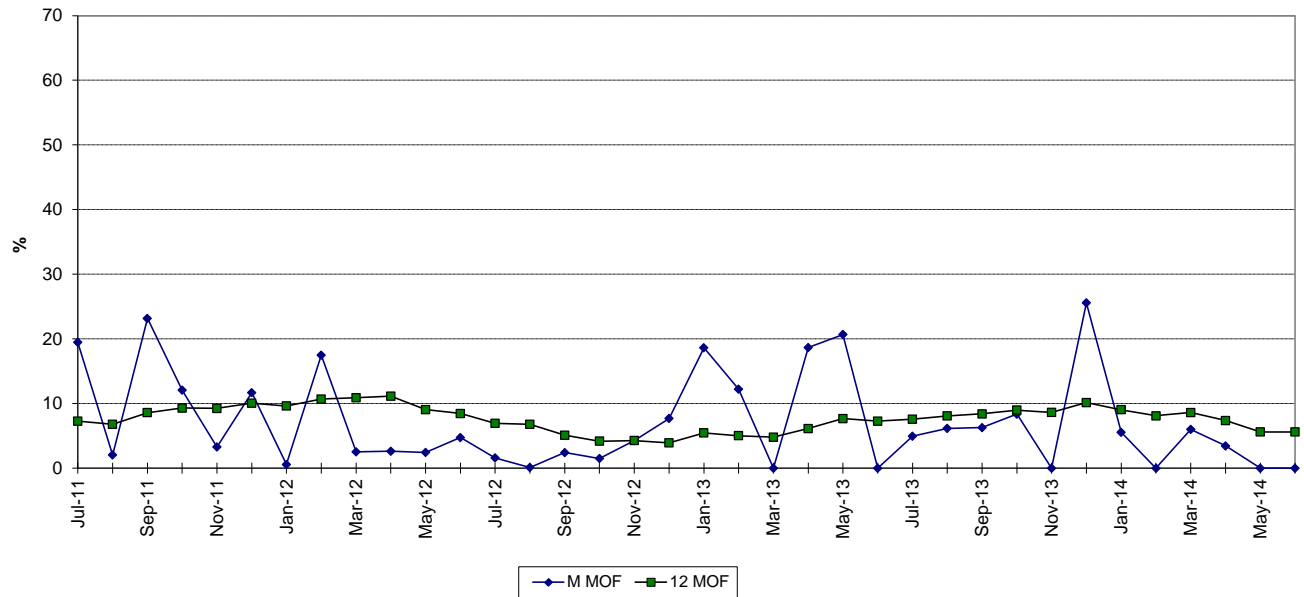
MAINTENANCE OUTAGE FACTOR



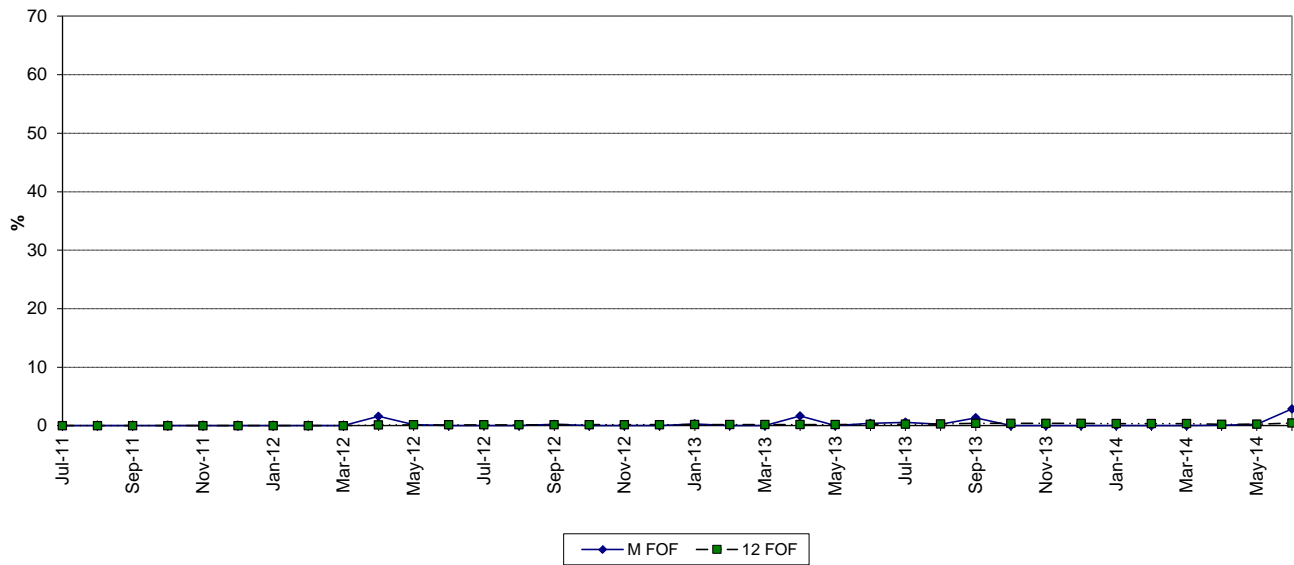
WEST COUNTY 2 FORCED OUTAGE FACTOR



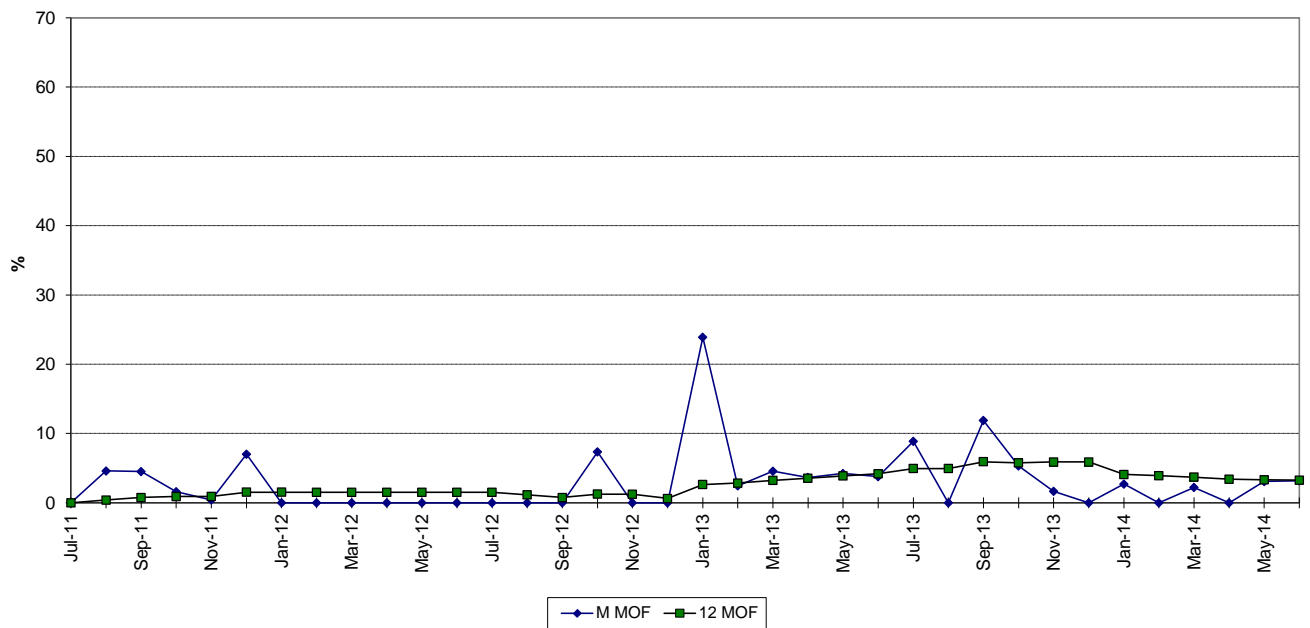
MAINTENANCE OUTAGE FACTOR



WEST COUNTY 3 FORCED OUTAGE FACTOR



MAINTENANCE OUTAGE FACTOR



PLANNED OUTAGE SCHEDULE (ESTIMATED)

FLORIDA POWER & LIGHT COMPANY

PERIOD OF: JANUARY THROUGH DECEMBER, 2015

PLANT/UNIT	PLAN OUTAGE	REASON FOR OUTAGE	LR MW*
Ft. Myers 2	04/11/2015 - 05/24/2015	CT 2A .04 / CT MAJ / PKG3 / GEN MAJ (REWEDGE) / LPEV / HRSG - 17% CURT	232
Ft. Myers 2	04/18/2015 - 04/24/2015	BOP INSP -100% CURT	1,366
Ft. Myers 2	04/18/2015 - 05/31/2015	CT 2E .04 / CT MAJ / PKG3 / GEN MAJ (REWEDGE) / LPEV / HRSG - 17% CURT	232
Ft. Myers 2	05/30/2015 - 07/05/2015	CT 2C .04 / CT MAJ / PKG3 / LPEV / HRSG - 17% CURT	232
Ft. Myers 2	06/06/2015 - 07/19/2015	CT 2F .04 / RTR / CT MAJ / PKG3 / GEN MAJ (REWEDGE) / LPEV / HRSG - 17% CURT	235
Manatee 3	07/13/2015 - 07/19/2015	BOP INSPECTION- 100% CURT	1,078
Manatee 3	07/20/2015 - 07/26/2015	CT 3B HRSG INSP - 25% CURT	270
Manatee 3	07/27/2015 - 08/02/2015	CT 3C HRSG INSP - 25% CURT	270
Martin 8	01/10/2015 - 02/22/2015	CT 8A GENERATOR MAJOR - 25% CURT	287
Martin 8	02/07/2015 - 02/22/2015	BOP - 100% CURT, CT 8C&D MOD CI / HRSG	1,147
Martin 8	02/07/2015 - 03/22/2015	CT 8B GENERATOR MAJOR - 25% CURT	287
St. Lucie 1	03/23/2015 - 04/25/2015	REFUELING	981
St. Lucie 2	09/07/2015 - 10/09/2015	REFUELING	840
Turkey Point 3	10/19/2015 - 11/18/2015	REFUELING	811
Turkey Point 4	NONE		
Turkey Point 5	06/06/2015 - 06/10/2015	BOP - 25% CURT	285
Turkey Point 5	06/06/2015 - 06/12/2015	CT 5A, B & C HRSG INSP - 25% CURT	285
Turkey Point 5	06/13/2015 - 06/19/2015	CT 5D HRSG INSP - 25% CURT	285
West County 1	03/14/2015 - 03/23/2015	BLOCK OUTAGE / CONTROLS UPGRADE - 100% CURT	1,208
West County 2	03/14/2015 - 03/20/2015	BLOCK OUTAGE / CONTROLS UPGRADE - 100% CURT	1,202
West County 2	10/03/2015 - 11/11/2015	CT 2A MAJOR / 24K - 33% CURT	382
West County 2	10/10/2015 - 11/18/2015	CT 2C MAJOR / 24K - 33% CURT	382
West County 2	10/16/2015 - 11/11/2015	ST VALVES / GEN MINOR - 100% CURT	1,159
West County 2	10/16/2015 - 11/24/2015	CT 2B MAJOR / 24K - 33% CURT	382
West County 3	03/07/2015 - 03/20/2015	CT 3B COMB INSP - 33% CURT	398
West County 3	03/14/2015 - 03/20/2015	BLOCK OUTAGE / CONTROLS UPGRADE / BOP - 100% CURT	1,207
West County 3	09/05/2015 - 09/19/2015	CT 3A COMB INSP - 33% CURT	385
West County 3	09/19/2015 - 10/02/2015	CT 3C COMB INSP - 33% CURT	385

*Approximate load reduction MW are based on the unit's estimated MW rating during the outage period