

“2. a”

CO	BU	OBJ	SUB	DESCRIPTION	TY	DOC	DATE	DEBIT	CREDIT	NET	LT
259	259101	6110		WSC-102101.6110	JA	19446	8/31/2013	278.98		278.98	UA
259	259100	6110		WSC-102101.6110	JA	19446	8/31/2013	283.68		283.68	UA

CO	BU	OBJ	SUB	DESCRIPTION	TY	DOC	DATE	DEBIT	CREDIT	NET	LT
259	259101	6115		WSC-102108.6115	JA	19670	8/31/2013	9.35		9.35	UA
259	259100	6115		WSC-102108.6115	JA	19670	8/31/2013	9.51		9.51	UA

CO	BU	OBJ	SUB	DESCRIPTION	TY	DOC	DATE	DEBIT	CREDIT	NET	LT
259	259101	6125		WSC-102103.6125	JA	19514	8/31/2013	45.50		45.50	UA
259	259100	6125		WSC-102103.6125	JA	19514	8/31/2013	46.26		46.26	UA

CO	BU	OBJ	SUB	DESCRIPTION	TY	DOC	DATE	DEBIT	CREDIT	NET	LT
259	259101	6130		WSC-102104.6130	JA	19548	8/31/2013	81.12		81.12	UA
259	259100	6130		WSC-102104.6130	JA	19548	8/31/2013	82.49		82.49	UA

CO	BU	OBJ	SUB	DESCRIPTION	TY	DOC	DATE	DEBIT	CREDIT	NET	LT
259	259101	6135		WSC-102109.6135	JA	292146	8/31/2013	17.65		17.65	UA
259	259101	6135		RVP FL/South-6135	JA	7178	8/31/2013	112.28		112.28	UA
259	259100	6135		WSC-102109.6135	JA	292146	8/31/2013	17.94		17.94	UA
259	259100	6135		RVP FL/South-6135	JA	7178	8/31/2013	114.17		114.17	UA

CO	BU	OBJ	SUB	DESCRIPTION	TY	DOC	DATE	DEBIT	CREDIT	NET	LT
259	259101	6140		WSC-102102.6140	JA	19486	8/31/2013	39.79		39.79	UA
259	259101	6140		State of FL-855100.6140	JA	253973	8/31/2013	6.58		6.58	UA
259	259100	6140		WSC-102102.6140	JA	19486	8/31/2013	40.46		40.46	UA
259	259100	6140		State of FL-855100.6140	JA	253973	8/31/2013	6.69		6.69	UA
259	259101	6140		Captive Reallocation	T9	295113	8/6/2013		(24.40)	(24.40)	AA
259	259101	6140		Salary and Expense Distributio	JP	294985	8/6/2013	3.43		3.43	AA

259	259101	6140	Salary and Expense Distributio	JP	294985	8/6/2013	3.66		3.66	AA
259	259101	6140	Captive Reallocation	T9	294982	8/6/2013		(2.06)	(2.06)	AA
259	259101	6140	Captive Reallocation	T9	294982	8/6/2013		(9.18)	(9.18)	AA
259	259101	6140	Captive Reallocation	T9	294982	8/6/2013		(1.66)	(1.66)	AA
259	259101	6140	Captive Reallocation	T9	295113	8/6/2013		(9.24)	(9.24)	AA
259	259101	6140	Captive Reallocation	T9	295113	8/6/2013		(9.21)	(9.21)	AA
259	259101	6140	Captive Reallocation	T9	295113	8/6/2013		(13.76)	(13.76)	AA
259	259101	6140	Captive Reallocation	T9	295113	8/6/2013		(2.20)	(2.20)	AA
259	259101	6140	Salary and Expense Distributio	JP	295050	8/15/2013	12.73		12.73	AA
259	259101	6140	Salary and Expense Distributio	JP	295050	8/15/2013	8.51		8.51	AA
259	259101	6140	Salary and Expense Distributio	JP	295050	8/15/2013	12.34		12.34	AA
259	259101	6140	Salary and Expense Distributio	JP	295050	8/15/2013	14.05		14.05	AA
259	259101	6140	Salary and Expense Distributio	JP	295050	8/15/2013	12.50		12.50	AA
259	259101	6140	Salary and Expense Distributio	JP	295050	8/15/2013	19.07		19.07	AA
259	259101	6140	Salary and Expense Distributio	JP	295175	8/20/2013	3.43		3.43	AA
259	259101	6140	Captive Reallocation	T9	295172	8/20/2013		(15.79)	(15.79)	AA
259	259101	6140	Captive Reallocation	T9	295172	8/20/2013		(1.29)	(1.29)	AA
259	259101	6140	Salary and Expense Distributio	JP	295175	8/20/2013	3.66		3.66	AA
259	259101	6140	Captive Reallocation	T9	295172	8/20/2013		(2.64)	(2.64)	AA
259	259101	6140	Captive Reallocation	T9	295174	8/31/2013		(22.18)	(22.18)	AA
259	259101	6140	Salary and Expense Distributio	JP	295176	8/31/2013	12.34		12.34	AA
259	259101	6140	Salary and Expense Distributio	JP	295176	8/31/2013	19.07		19.07	AA
259	259101	6140	Salary and Expense Distributio	JP	295176	8/31/2013	12.50		12.50	AA
259	259101	6140	Salary and Expense Distributio	JP	295176	8/31/2013	14.05		14.05	AA
259	259101	6140	Salary and Expense Distributio	JP	295176	8/31/2013	12.73		12.73	AA
259	259101	6140	JE DOC 295307 MANUAL T9	T9	295335	8/31/2013		(15.30)	(15.30)	AA
259	259101	6140	Captive Reallocation	T9	295174	8/31/2013		(14.92)	(14.92)	AA
259	259101	6140	Captive Reallocation	T9	295174	8/31/2013		(6.19)	(6.19)	AA
259	259101	6140	Captive Reallocation	T9	295174	8/31/2013		(8.98)	(8.98)	AA
259	259101	6140	Captive Reallocation	T9	295174	8/31/2013		(15.79)	(15.79)	AA
259	259101	6140	Salary and Expense Distributio	JP	295176	8/31/2013	8.51		8.51	AA
259	259100	6140	Captive Reallocation	T9	295113	8/6/2013		(24.92)	(24.92)	AA
259	259100	6140	Salary and Expense Distributio	JP	294985	8/6/2013	3.43		3.43	AA
259	259100	6140	Salary and Expense Distributio	JP	294985	8/6/2013	3.66		3.66	AA

259	259100	6140	Captive Reallocation	T9	294982	8/6/2013		(2.06)	(2.06)	AA
259	259100	6140	Captive Reallocation	T9	294982	8/6/2013		(9.37)	(9.37)	AA
259	259100	6140	Captive Reallocation	T9	294982	8/6/2013		(1.66)	(1.66)	AA
259	259100	6140	Captive Reallocation	T9	295113	8/6/2013		(9.44)	(9.44)	AA
259	259100	6140	Captive Reallocation	T9	295113	8/6/2013		(9.41)	(9.41)	AA
259	259100	6140	Captive Reallocation	T9	295113	8/6/2013		(14.05)	(14.05)	AA
259	259100	6140	Captive Reallocation	T9	295113	8/6/2013		(2.25)	(2.25)	AA
259	259100	6140	Salary and Expense Distributio	JP	295050	8/15/2013	12.60		12.60	AA
259	259100	6140	Salary and Expense Distributio	JP	295050	8/15/2013	8.69		8.69	AA
259	259100	6140	Salary and Expense Distributio	JP	295050	8/15/2013	13.00		13.00	AA
259	259100	6140	Salary and Expense Distributio	JP	295050	8/15/2013	14.35		14.35	AA
259	259100	6140	Salary and Expense Distributio	JP	295050	8/15/2013	12.76		12.76	AA
259	259100	6140	Salary and Expense Distributio	JP	295050	8/15/2013	19.48		19.48	AA
259	259100	6140	Salary and Expense Distributio	JP	295175	8/20/2013	3.43		3.43	AA
259	259100	6140	Captive Reallocation	T9	295172	8/20/2013		(16.13)	(16.13)	AA
259	259100	6140	Captive Reallocation	T9	295172	8/20/2013		(1.29)	(1.29)	AA
259	259100	6140	Salary and Expense Distributio	JP	295175	8/20/2013	3.66		3.66	AA
259	259100	6140	Captive Reallocation	T9	295172	8/20/2013		(2.64)	(2.64)	AA
259	259100	6140	Captive Reallocation	T9	295174	8/31/2013		(22.66)	(22.66)	AA
259	259100	6140	Salary and Expense Distributio	JP	295176	8/31/2013	12.60		12.60	AA
259	259100	6140	Salary and Expense Distributio	JP	295176	8/31/2013	19.48		19.48	AA
259	259100	6140	Salary and Expense Distributio	JP	295176	8/31/2013	12.76		12.76	AA
259	259100	6140	Salary and Expense Distributio	JP	295176	8/31/2013	14.35		14.35	AA
259	259100	6140	Salary and Expense Distributio	JP	295176	8/31/2013	13.00		13.00	AA
259	259100	6140	JE DOC 295307 MANUAL T9	T9	295335	8/31/2013		(15.62)	(15.62)	AA
259	259100	6140	Captive Reallocation	T9	295174	8/31/2013		(15.24)	(15.24)	AA
259	259100	6140	Captive Reallocation	T9	295174	8/31/2013		(6.32)	(6.32)	AA
259	259100	6140	Captive Reallocation	T9	295174	8/31/2013		(16.13)	(16.13)	AA
259	259100	6140	Captive Reallocation	T9	295174	8/31/2013		(9.17)	(9.17)	AA
259	259100	6140	Salary and Expense Distributio	JP	295176	8/31/2013	8.69		8.69	AA

CO	BU	OBJ	SUB	DESCRIPTION	TY	DOC	DATE	DEBIT	CREDIT	NET	LT
259	259101	6145		WSC-102106.6145	JA	19613	8/31/2013	186.74		186.74	UA

259	259100	6145		WSC-102106.6145	JA	19613	8/31/2013	189.88		189.88	UA
-----	--------	------	--	-----------------	----	-------	-----------	--------	--	--------	----

CO	BU	OBJ	SUB	DESCRIPTION	TY	DOC	DATE	DEBIT	CREDIT	NET	LT
259	259101	6146		WSC-102105.6146	JA	269943	8/31/2013	99.11		99.11	UA
259	259100	6146		WSC-102105.6146	JA	269943	8/31/2013	100.78		100.78	UA

CO	BU	OBJ	SUB	DESCRIPTION	TY	DOC	DATE	DEBIT	CREDIT	NET	LT
259	259101	6147		WSC-102112.6147	JA	269944	8/31/2013	23.73		23.73	UA
259	259100	6147		WSC-102112.6147	JA	269944	8/31/2013	24.13		24.13	UA

CO	BU	OBJ	SUB	DESCRIPTION	TY	DOC	DATE	DEBIT	CREDIT	NET	LT
259	259101	6150		State of FL-855100.6150	JA	253975	8/31/2013	190.72		190.72	UA
259	259100	6150		State of FL-855100.6150	JA	253975	8/31/2013	193.93		193.93	UA
259	259101	6150		JCT-JULY 13 ACCRUAL	JE	294763	8/1/2013		(741.00)	(741.00)	AA
259	259101	6150		Salary and Expense Distributio	JP	294985	8/6/2013	388.73		388.73	AA
259	259101	6150		Captive Reallocation	T9	294982	8/6/2013		(27.68)	(27.68)	AA
259	259101	6150		Captive Reallocation	T9	294982	8/6/2013		(11.49)	(11.49)	AA
259	259101	6150		Salary and Expense Distributio	JP	294985	8/6/2013	336.54		336.54	AA
259	259101	6150		Salary and Expense Distributio	JP	294985	8/6/2013	90.52		90.52	AA
259	259101	6150		Salary and Expense Distributio	JP	294985	8/6/2013	111.00		111.00	AA
259	259101	6150		Salary and Expense Distributio	JP	294985	8/6/2013	62.71		62.71	AA
259	259101	6150		Captive Reallocation	T9	295113	8/6/2013		(10.02)	(10.02)	AA
259	259101	6150		Salary and Expense Distributio	JP	295050	8/15/2013	238.13		238.13	AA
259	259101	6150		Salary and Expense Distributio	JP	295050	8/15/2013	221.73		221.73	AA
259	259101	6150		Salary and Expense Distributio	JP	295175	8/20/2013	86.48		86.48	AA
259	259101	6150		Salary and Expense Distributio	JP	295175	8/20/2013	339.12		339.12	AA
259	259101	6150		Salary and Expense Distributio	JP	295175	8/20/2013	94.56		94.56	AA
259	259101	6150		Salary and Expense Distributio	JP	295175	8/20/2013	103.55		103.55	AA
259	259101	6150		Salary and Expense Distributio	JP	295175	8/20/2013	425.56		425.56	AA
259	259101	6150		Captive Reallocation	T9	295172	8/20/2013		(13.83)	(13.83)	AA
259	259101	6150		Captive Reallocation	T9	295172	8/20/2013		(39.12)	(39.12)	AA

259	259101	6150	JCT-AUG 13 ACCRUAL	JE	295090	8/31/2013	987.00		987.00	AA
259	259101	6150	JE DOC 295307 MANUAL T9	T9	295335	8/31/2013		(74.98)	(74.98)	AA
259	259101	6150	Captive Reallocation	T9	295174	8/31/2013		(131.20)	(131.20)	AA
259	259101	6150	Captive Reallocation	T9	295174	8/31/2013		(60.14)	(60.14)	AA
259	259101	6150	Salary and Expense Distributio	JP	295176	8/31/2013	238.13		238.13	AA
259	259101	6150	Salary and Expense Distributio	JP	295176	8/31/2013	221.73		221.73	AA
259	259100	6150	JCT-JULY 13 ACCRUAL	JE	294763	8/1/2013		(753.00)	(753.00)	AA
259	259100	6150	Salary and Expense Distributio	JP	294985	8/6/2013	112.93		112.93	AA
259	259100	6150	Captive Reallocation	T9	294982	8/6/2013		(28.15)	(28.15)	AA
259	259100	6150	Captive Reallocation	T9	294982	8/6/2013		(11.73)	(11.73)	AA
259	259100	6150	Salary and Expense Distributio	JP	294985	8/6/2013	395.85		395.85	AA
259	259100	6150	Salary and Expense Distributio	JP	294985	8/6/2013	342.69		342.69	AA
259	259100	6150	Salary and Expense Distributio	JP	294985	8/6/2013	92.26		92.26	AA
259	259100	6150	Salary and Expense Distributio	JP	294985	8/6/2013	63.80		63.80	AA
259	259100	6150	Captive Reallocation	T9	295113	8/6/2013		(10.21)	(10.21)	AA
259	259100	6150	Salary and Expense Distributio	JP	295050	8/15/2013	225.99		225.99	AA
259	259100	6150	Salary and Expense Distributio	JP	295050	8/15/2013	242.44		242.44	AA
259	259100	6150	Salary and Expense Distributio	JP	295175	8/20/2013	88.00		88.00	AA
259	259100	6150	Salary and Expense Distributio	JP	295175	8/20/2013	345.31		345.31	AA
259	259100	6150	Salary and Expense Distributio	JP	295175	8/20/2013	96.38		96.38	AA
259	259100	6150	Salary and Expense Distributio	JP	295175	8/20/2013	105.37		105.37	AA
259	259100	6150	Salary and Expense Distributio	JP	295175	8/20/2013	433.35		433.35	AA
259	259100	6150	Captive Reallocation	T9	295172	8/20/2013		(14.08)	(14.08)	AA
259	259100	6150	Captive Reallocation	T9	295172	8/20/2013		(39.88)	(39.88)	AA
259	259100	6150	Salary and Expense Distributio	JP	295176	8/31/2013	225.99		225.99	AA
259	259100	6150	JCT-AUG 13 ACCRUAL	JE	295090	8/31/2013	1,004.00		1,004.00	AA
259	259100	6150	Salary and Expense Distributio	JP	295176	8/31/2013	242.44		242.44	AA
259	259100	6150	Captive Reallocation	T9	295174	8/31/2013		(61.24)	(61.24)	AA
259	259100	6150	Captive Reallocation	T9	295174	8/31/2013		(133.72)	(133.72)	AA
259	259100	6150	JE DOC 295307 MANUAL T9	T9	295335	8/31/2013		(76.35)	(76.35)	AA

CO	BU	OBJ	SUB	DESCRIPTION	TY	DOC	DATE	DEBIT	CREDIT	NET	LT
259	259101	6155		Southeast Region-805100.6155	JA	248535	8/31/2013	37.03		37.03	UA

259	259100	6155	Southeast Region-805100.6155	JA	248535	8/31/2013	37.65		37.65	UA
259	259101	6155	Captive Reallocation	T9	294982	8/6/2013		(4.00)	(4.00)	AA
259	259101	6155	Salary and Expense Distributio	JP	294985	8/6/2013	16.18		16.18	AA
259	259101	6155	Salary and Expense Distributio	JP	294985	8/6/2013	16.78		16.78	AA
259	259101	6155	Salary and Expense Distributio	JP	295175	8/20/2013	17.10		17.10	AA
259	259101	6155	Captive Reallocation	T9	295172	8/20/2013		(5.75)	(5.75)	AA
259	259101	6155	Captive Reallocation	T9	295172	8/20/2013		(10.12)	(10.12)	AA
259	259101	6155	Salary and Expense Distributio	JP	295175	8/20/2013	16.18		16.18	AA
259	259100	6155	Salary and Expense Distributio	JP	294985	8/6/2013	16.57		16.57	AA
259	259100	6155	Captive Reallocation	T9	294982	8/6/2013		(4.10)	(4.10)	AA
259	259100	6155	Salary and Expense Distributio	JP	294985	8/6/2013	17.19		17.19	AA
259	259100	6155	Salary and Expense Distributio	JP	295175	8/20/2013	17.51		17.51	AA
259	259100	6155	Salary and Expense Distributio	JP	295175	8/20/2013	16.57		16.57	AA
259	259100	6155	Captive Reallocation	T9	295172	8/20/2013		(10.37)	(10.37)	AA
259	259100	6155	Captive Reallocation	T9	295172	8/20/2013		(5.89)	(5.89)	AA

CO	BU	OBJ	SUB	DESCRIPTION	TY	DOC	DATE	DEBIT	CREDIT	NET	LT
259	259101	6165		WSC-102104.6165	JA	7340	8/31/2013		(12.92)	(12.92)	UA
259	259101	6165		State of FL-855100.6165	JA	253978	8/31/2013	81.52		81.52	UA
259	259100	6165		WSC-102104.6165	JA	7340	8/31/2013		(13.14)	(13.14)	UA
259	259100	6165		State of FL-855100.6165	JA	253978	8/31/2013	82.89		82.89	UA
259	259102	6165		AUG 13 WO CP2012058	JE	295366	8/31/2013	82.00		82.00	AA
259	259102	6165		AUG 13 WO CP2012058	JE	295366	8/31/2013	82.00		82.00	AA
259	259102	6165		AUG 13 WO CP2012058	JE	295366	8/31/2013	82.00		82.00	AA
259	259102	6165		AUG 13 WO CP2012058	JE	295366	8/31/2013	82.00		82.00	AA
259	259102	6165		AUG 13 WO CP2012058	JE	295366	8/31/2013	82.00		82.00	AA
259	259102	6165		AUG 13 WO CP2012107	JE	295367	8/31/2013	252.00		252.00	AA
259	259102	6165		AUG 13 WO CP2012058	JE	295366	8/31/2013	82.00		82.00	AA
259	259102	6165		AUG 13 WO CP2012058	JE	295366	8/31/2013	164.00		164.00	AA
259	259102	6165		AUG 13 WO CP2012058	JE	295366	8/31/2013	82.00		82.00	AA
259	259102	6165		Labrador-259102.6165	JA	248913	8/31/2013		(4,478.08)	(4,478.08)	AA
259	259102	6165		AUG 13 WO CP2012058	JE	295366	8/31/2013	82.00		82.00	AA
259	259102	6165		AUG 13 WO CP2012058	JE	295366	8/31/2013	318.56		318.56	AA

259	259102	6165	AUG 13 WO CP2012058	JE	295366	8/31/2013	82.00	82.00	AA
259	259102	6165	AUG 13 WO CP2012058	JE	295366	8/31/2013	82.00	82.00	AA
259	259102	6165	AUG 13 WO CP2012107	JE	295367	8/31/2013	82.00	82.00	AA
259	259102	6165	AUG 13 WO CP2012107	JE	295367	8/31/2013	164.00	164.00	AA
259	259102	6165	AUG 13 WO CP2012107	JE	295367	8/31/2013	82.00	82.00	AA
259	259102	6165	AUG 13 WO CP2012107	JE	295367	8/31/2013	82.00	82.00	AA
259	259102	6165	AUG 13 WO CP2012107	JE	295367	8/31/2013	82.00	82.00	AA
259	259102	6165	AUG 13 WO CP2012107	JE	295367	8/31/2013	246.00	246.00	AA
259	259102	6165	AUG 13 WO CP2012107	JE	295367	8/31/2013	82.00	82.00	AA
259	259102	6165	AUG 13 WO CP2012107	JE	295367	8/31/2013	82.00	82.00	AA
259	259102	6165	AUG 13 WO CP2012107	JE	295367	8/31/2013	159.28	159.28	AA
259	259102	6165	AUG 13 WO CP2012107	JE	295367	8/31/2013	164.00	164.00	AA
259	259102	6165	AUG 13 WO CP2012107	JE	295367	8/31/2013	164.00	164.00	AA
259	259102	6165	AUG 13 WO CP2012107	JE	295367	8/31/2013	410.00	410.00	AA
259	259102	6165	AUG 13 WO CP2012107	JE	295367	8/31/2013	168.00	168.00	AA
259	259102	6165	AUG 13 WO CP2012107	JE	295367	8/31/2013	168.00	168.00	AA
259	259102	6165	AUG 13 WO CP2012107	JE	295367	8/31/2013	161.24	161.24	AA
259	259102	6165	AUG 13 WO CP2012107	JE	295367	8/31/2013	168.00	168.00	AA
259	259102	6165	AUG 13 WO CP2012107	JE	295367	8/31/2013	168.00	168.00	AA
259	259102	6165	AUG 13 WO CP2012107	JE	295367	8/31/2013	168.00	168.00	AA
259	259102	6165	AUG 13 WO CP2012058	JE	295366	8/31/2013	123.00	123.00	AA
259	259101	6165	RCL T4 1209	JE	295354	8/31/2013		(80.62)	(80.62) AA
259	259101	6165	Labrador-259102.6165	JA	248913	8/31/2013	2,220.35		2,220.35 AA
259	259100	6165	RCL T4 1221	JE	295359	8/31/2013		(120.93)	(120.93) AA
259	259100	6165	Labrador-259102.6165	JA	248913	8/31/2013	2,257.73		2,257.73 AA

12,504.72 6,288
Water

“2. b”

CO	BU	OBJ	SUB	DESCRIPTION	TY	DOC	DATE	DEBIT	CREDIT	NET	LT
259	259101	5480		THE DUMONT COMPANY INC	PV	503091	3/7/2013	195.00		195.00	AA
259	259101	5480		THE DUMONT COMPANY INC	PV	507407	3/22/2013	227.50		227.50	AA
259	259100	5480		THE DUMONT COMPANY INC	PV	503092	3/7/2013	53.30		53.30	AA
259	259100	5480		THE DUMONT COMPANY INC	PV	507406	3/22/2013	61.10		61.10	AA

CO	BU	OBJ	SUB	DESCRIPTION	TY	DOC	DATE	DEBIT	CREDIT	NET	LT
259	259101	5485		SIEMENS WATER TECHNOLOGIES	OV	134963	3/1/2013	1,768.71		1,768.71	AA

CO	BU	OBJ	SUB	DESCRIPTION	TY	DOC	DATE	DEBIT	CREDIT	NET	LT
259	259101	5490		SIEMENS INDUSTRY INC.	OV	136777	3/28/2013	2,047.98		2,047.98	AA

4,353.59 114

Water

PC	LVL6	LVL7	CO_NAME	REGION	STATE	Month	Year
P	5475 - CHEMICALS	CHLORINE	Labrador Utilities Inc	SER	FL	3	2013
P	5475 - CHEMICALS	CHLORINE	Labrador Utilities Inc	SER	FL	3	2013
P	5475 - CHEMICALS	CHLORINE	Labrador Utilities Inc	SER	FL	3	2013
P	5475 - CHEMICALS	CHLORINE	Labrador Utilities Inc	SER	FL	3	2013

PC	LVL6	LVL7	CO_NAME	REGION	STATE	Month	Year
P	5475 - CHEMICALS	ODOR CONTROL CHEMICALS	Labrador Utilities Inc	SER	FL	3	2013

PC	LVL6	LVL7	CO_NAME	REGION	STATE	Month	Year
P	5475 - CHEMICALS	OTHER TREATMENT CHEMICALS	Labrador Utilities Inc	SER	FL	3	2013

4,239

Sewer

Batch 150117

Invoice
272837

THE DUMONT COMPANY, INC.
P.O. BOX 622280
OVIEDO FL 32762-2280
(800) 330-1369 Fax: (800) 524-9315

Doc 503091

Invoice Date:
Feb 28, 2013

Page 1

Sold To:
Utilities Inc - Labrador WWTP
Accts. Payable
2335 Sanders Rd.
Northbrook, IL 60062

Ship to:
UTIF-Labrador WWTP
Labrador WWTP
6000 Via Way
Zephyrhills, FL
West

Customer ID		Customer PO	Payment Terms	
UTIF-Labrador WWTP		UNIT 259101	Net 30 Days	
Sales Rep ID		Shipping Method	Ship Date	Due Date
RULE		Our Truck	2/28/13	3/30/13
Quantity	Item	Description	Unit Price	Extension
150.00	IND813939	UN1791, Hypochlorite Solution, 8, PG III Sodium Hypochlorite 12.5% - BULK GL DOT SP-12412	1.300	195.00

RECEIVED
MAR 05 2013

Subtotal	195.00
Sales Tax	
Freight	
TOTAL	195.00

EMERGENCY RESPONSE: (800) 330-1369

DUMONT

THE DUMONT COMPANY, INC.
P.O. BOX 622280
OVIEDO FL 32762-2280
(800) 330-1369 Fax: (800) 524-9315

Sold To:
Utilities Inc - Labrador WWTP
Accts. Payable
2335 Sanders Rd.
Northbrook, IL 60062

Batch 151103

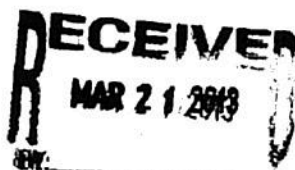
Doc 507407

Invoice
273672

Invoice Date:
Mar 14, 2013

Page: 1

Ship to:
UTIF-Labrador WWTP
Labrador WWTP
6000 Via Way
Zephyrhills, FL
West

Customer ID		Customer PO	Payment Terms	
UTIF-Labrador WWTP		UNIT 259101	Net 30 Days	
Sales Rep ID		Shipping Method	Ship Date	Due Date
RULE		Our Truck	3/14/13	4/13/13
Quantity	Item	Description	Unit Price	Extension
175.00	IND813939	UN1791, Hypochlorite Solution, 8, PG III Sodium Hypochlorite 12.5% - BULK GL DOT SP-12412	1.300	227.50
				
			Subtotal	227.50
			Sales Tax	
			Freight	
			TOTAL	227.50

EMERGENCY RESPONSE: (800) 330-1369

150117
503092

Invoice
272836

THE DUMONT COMPANY, INC.
P.O. BOX 622280
OVIEDO FL 32762-2280
(800) 330-1369 Fax: (800) 524-9315

Invoice Date:
Feb 28, 2013

Page 1

Sold To:
Utilities Inc - Labrador WTP
Accts. Payable
2335 Sanders Rd.
Northbrook, IL 60062

Ship to:
UTIF-Labrador WTP
Labrador WTP
41311 Pauquette Way
Zephyrhills, FL 33540
West

Customer ID		Customer PO	Payment Terms	
UTIF-Labrador WTP		259100	Net 30 Days	
Sales Rep ID		Shipping Method	Ship Date	Due Date
RULE		Our Truck	2/28/13	3/30/13
Quantity	Item	Description	Unit Price	Extension
41.00	END813939	UN1791, Hypochlorite Solution, 8, PG III Sodium Hypochlorite 12.5% - BULK GL DOT SP-12412	1.300	53.30

RECEIVED
MAR 05 2013

Subtotal	53.30
Sales Tax	
Freight	
TOTAL	53.30

EMERGENCY RESPONSE: (800) 330-1369

DUMONT

THE DUMONT COMPANY, INC.
P.O. BOX 622280
OVIEDO FL 32762-2280
(800) 330-1369 Fax: (800) 524-9315

Sold To:
Utilities Inc - Labrador WTP
Accts. Payable
2335 Sanders Rd.
Northbrook, IL 60062

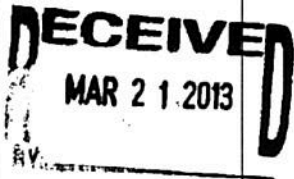
Batch 151103
Doc 507406

Invoice
273671

Invoice Date:
Mar 14, 2013

Page: 1

Ship to:
UTIF-Labrador WTP
Labrador WTP
41311 Pauquette Way
Zephyrhills, FL 33540
West

Customer ID		Customer PO	Payment Terms	
UTIF-Labrador WTP		259100	Net 30 Days	
Sales Rep ID		Shipping Method	Ship Date	Due Date
RULE		Our Truck	3/14/13	4/13/13
Quantity	Item	Description	Unit Price	Extension
47.00	IND813939	UN1791, Hypochlorite Solution, 8, PG III Sodium Hypochlorite 12.5% - BULK GL DOT SP-12412	1.300	61.10
				
Subtotal				61.10
Sales Tax				
Freight				
TOTAL				61.10

EMERGENCY RESPONSE: (800) 330-1369

SIEMENS

Invoice

Batch 149774

Branch: 128

Bill-to: 1052154
 UTILITIES INC
 2335 SANDERS RD
 NORTHBROOK IL 60062
 Tel. Number: 847-498-6440

300 5868

Billing No.: 901112533
 Billing Date: 02/14/2013
 Sales Order/Contract: 291830
 Customer No.: 1052154
 Customer PO No.: SIGNED NO PO LTR
 Incoterms(part 1): FOB Free on board
 Incoterms(part 2): Free on board
 Payment Terms: Net 30 days
 Sales Rep: JAMES V HARSHMAN

502087

127623

Remit-to address:
 Siemens Industry, Inc.
 P.O. Box 360766
 Pittsburgh, PA 15250-6766
 United States
 Telephone# 1-800-466-7873

Ship-to address: 2007185
 UTILITIES INC
 LABRADOR MASTER PS
 6101 SPRING LAKE CIR
 ZEPHYRHILLS FL 33540-7590

Line Item	Material Description	Old Part Number	Origin	Qty./UOM	Unit Price	Total Price Currency USD	Tax Currency USD	Total Currency USD
001000	W2T501220 BIOXIDE (R) Bioxide (R) is a registered trademark of Siemens Water Technologies Corp. ECCN: EAR99 Delivery date: 02/08/2013		US	475 GAL	3.48	1,653.00	115.71	1,768.71

FEB 08 2013

For domestic shipments the following applies:

These commodities are sold for domestic consumption. Any export of these commodities must be made in accordance with applicable US laws.

For export shipments from the US the following applies:

These commodities, technology or software (items) were exported from the United States in accordance with the Export Administration Regulations Diversion contrary to US law is prohibited. These items are not to be used directly or indirectly in prohibited nuclear chemical/biological or missile weapons activities.

Net Total	1,653.00 USD
State Tax 6.000 %	99.18 USD
County Tax 1.000 %	16.53 USD
City Tax 0.000 %	0.00 USD
Dist/Other Tax 0.000 %	0.00 USD
Total Amount Including Tax	1,768.71 USD

Special Instructions:

BOL #10052805 DELIVERED 2/8/2013

SIEMENS

Branch: 128

Invoice

Billing No.: 901112533
Billing Date: 02/14/2013

Please note: Our REMIT TO address has changed.

SIEMENS

Siemens Industry, Inc.

Bill of Lading No.

10052805

Ship Date: 02/07/2013

Page 1 of 1

2650 Tallevast Road
Sarasota, FL 34243
941-355-2971

Item 1000 Ship-to LABRADOR MASTER PS

UTILITIES INC
2335 SANDERS RD
NORTHBROOK IL 60062

ACCOUNT	DATE PLACED	SHIPPED VIA	CUSTOMER ORDER	YOUR P.O. NUMBER
1052154	02/07/2013		10052805	SIGNED NO PO LTR

Part# / DESCRIPTION	DATE PROMISED	QUANTITY ORDERED	U/M
W2T501220 BIOXIDE (R) ECCN: EAR99 Country of origin: US REGS PER CFR 49 PART 172.101 NO PLACARD REQUIRED, EXEMPT FROM DOT HAZARDOUS MATERIALS	02/08/2013	Item 1000 350	GAL

Received subject to the classification and lawfully tariffs in effect on the date of issue of this Bill of Lading

FOR CHEMICAL EMERGENCY

Spill, Leak, Fire, Exposure or Accident

Call CHEMTREC - DAY OR NIGHT

800-424-9300

Drop	Beginning Level	Ending Level	Totals
Labrador Master	75	550	475
		Total	475

This is to certify that the above named articles are properly described and that the cargo tank supplied for this shipment is a proper container for the transportation of this commodity in accordance with the regulations of the Department of Transportation Federal Highway Administration.

CARRIER AGENT: [Signature]

DRIVER: [Signature] 2-8-13

RECEIVED BY: _____

EXPORT - These commodities, technology or software (items) were exported from the United States in accordance with the Export Administration Regulations Diversion contrary to US law is prohibited. These items are not to be used directly or indirectly in prohibited nuclear chemical/biological or missile weapons activities.

DOMESTIC - These commodities are sold for domestic consumption. Any export of these commodities must be made in accordance with applicable US laws.

STRAIGHT BILL OF LADING - SHORT FORM

ORIGINAL - NOT NEGOTIABLE

Release # 2576564

456640111

NOTICE
CHANGE OF REMIT TO ADDRESS
For
SIEMENS INDUSTRY, INC.
Friday January 25, 2013

Please note that our "Remit To Address" has changed and effective immediately we request you mail your payments to the following address:

Bank of New York (Mellon)
P.O. Box 360766
Pittsburgh, PA 15250-6766

The physical address to use when sending payment via UPS or Fed Ex is as follows:

Mellon Client Service Center
500 Ross Street
Attn: Lockbox #360766
Pittsburgh, PA 15262

Thank you for assisting us with this change.

Siemens Industry, Inc.
Management

SIEMENS

Branch: 128

3035675

Invoice

Batch 151699

Billing No.: 901147338

Billing Date: 03/11/2013

Doc 508960

Sales Order/Contract: 298730

Customer No.: 1052154

Customer PO No.: SIGNED NO PO LETTER

Incoterms(part 1): FOB Free on board

Incoterms(part 2): Free on board

Payment Terms: Net 30 days

Sales Rep: JAMES V HARSHMAN

Bill-to: 1052154
UTILITIES INC
2335 SANDERS RD
NORTHBROOK IL 60062
Tel. Number: 847-498-6440

129803

Remit-to address:
Siemens Industry, Inc.
P.O. Box 360766
Pittsburgh, PA 15250-6766
United States
Telephone# 1-800-466-7873

Ship-to address: 2007185
UTILITIES INC
LABRADOR MASTER PS
6101 SPRING LAKE CIR
ZEPHYRHILLS FL 33540-7590

259101

Line Item	Material Description	Old Part Number	Origin	Qty./UOM	Unit Price	Total Price Currency USD	Tax Currency USD	Total Currency USD
001000	W2T501220 BIOXIDE (R) Bioxide (R) is a registered trademark of Siemens Water Technologies Corp. ECCN: EAR99 Delivery date: 03/05/2013		US	550 GAL	3.48	1,914.00	133.98	2,047.98

RECEIVED

MAR 25 2013

For domestic shipments the following applies:

These commodities are sold for domestic consumption. Any export of these commodities must be made in accordance with applicable US laws.

For export shipments from the US the following applies:

These commodities, technology or software (items) were exported from the United States in accordance with the Export Administration Regulations Diversion contrary to US law is prohibited. These items are not to be used directly or indirectly in prohibited nuclear chemical/biological or missile weapons activities.

Net Total	1,914.00 USD
State Tax 6.000 %	114.84 USD
County Tax 1.000 %	19.14 USD
City Tax 0.000 %	0.00 USD
Dist/Other Tax 0.000 %	0.00 USD
Total Amount Including Tax	2,047.98 USD

Special Instructions:
BOL NUMBER 10054325

SIEMENS

Invoice

Branch: 128

Billing No.: 901147338
Billing Date: 03/11/2013

LABRADOR MASTER

Please note: Our REMIT TO address has changed.

“2. c”

CO	BU	OBJ	SUB	DESCRIPTION	TY	DOC	DATE	DEBIT	CREDIT	NET
259	259101	5735		WSC-102104.5735	JA	4625	8/31/2013	362.04		362.04
259	259101	5735		WSC-102107.5735	JA	4629	8/31/2013		(2.55)	(2.55)
259	259100	5735		WSC-102104.5735	JA	4625	8/31/2013	368.14		368.14
259	259100	5735		WSC-102107.5735	JA	4629	8/31/2013		(2.59)	(2.59)

CO	BU	OBJ	SUB	DESCRIPTION	TY	DOC	DATE	DEBIT	CREDIT	NET
259	259101	5750		State of FL-855100.5750	JA	248415	8/31/2013	2.66		2.66
259	259101	5750		WSC-102104.5750	JA	4656	8/31/2013	35.86		35.86
259	259100	5750		State of FL-855100.5750	JA	248415	8/31/2013	2.7		2.7
259	259100	5750		WSC-102104.5750	JA	4656	8/31/2013	36.47		36.47

CO	BU	OBJ	SUB	DESCRIPTION	TY	DOC	DATE	DEBIT	CREDIT	NET
259	259101	6015		WSC-102103.6015	JA	4117	8/31/2013	0.07		0.07
259	259100	6015		WSC-102103.6015	JA	4117	8/31/2013	0.07		0.07

CO	BU	OBJ	SUB	DESCRIPTION	TY	DOC	DATE	DEBIT	CREDIT	NET
259	259101	6035		WSC-102103.6035	JA	4157	8/31/2013	24.74		24.74
259	259100	6035		WSC-102103.6035	JA	4157	8/31/2013	25.16		25.16

CO	BU	OBJ	SUB	DESCRIPTION	TY	DOC	DATE	DEBIT	CREDIT	NET
259	259101	6050		WSC-102105.6050	JA	4189	8/31/2013	57.89		57.89
259	259100	6050		WSC-102105.6050	JA	4189	8/31/2013	58.87		58.87
259	259102	6050		Labrador-259102.6050	JA	18827	8/31/2013		(14,312.00)	(14,312.00)
259	259102	6050		AUG 13 WO CP2012107	JE	295367	8/31/2013	8,000.00		8,000.00
259	259102	6050		AUG 13 WO CP2012107	JE	295367	8/31/2013	6,312.00		6,312.00
259	259101	6050		Labrador-259102.6050	JA	18827	8/31/2013	7,096.27		7,096.27
259	259100	6050		Labrador-259102.6050	JA	18827	8/31/2013	7,215.73		7,215.73

Month	Year
8	2013
8	2013
8	2013
8	2013

Month	Year
8	2013
8	2013
8	2013
8	2013

Month	Year
8	2013
8	2013

Month	Year
8	2013
8	2013

Month	Year
8	2013
8	2013
8	2013
8	2013
8	2013
8	2013
8	2013

CO	BU	OBJ	SUB	DESCRIPTION	TY	DOC	DATE	DEBIT	CREDIT	NET
259	259101	6370		SE OV ACCR	JE	294891	8/1/2013		(324.00)	(324.00)
259	259101	6370		GENERAL UTILITIES	OV	146507	8/2/2013	324.00		324.00

15,281.53

CO	BU	OBJ	SUB	DESCRIPTION	TY	DOC	DATE	DEBIT	CREDIT	NET
259	259101	5735		WSC-102104.5735	JA	4625	10/31/2013	377.61		377.61
259	259101	5735		State of FL-855100.5735	JA	248412	10/31/2013	1.17		1.17
259	259100	5735		WSC-102104.5735	JA	4625	10/31/2013	383.88		383.88
259	259100	5735		State of FL-855100.5735	JA	248412	10/31/2013	1.19		1.19

CO	BU	OBJ	SUB	DESCRIPTION	TY	DOC	DATE	DEBIT	CREDIT	NET
259	259101	5750		WSC-102104.5750	JA	4656	10/31/2013	36.32		36.32
259	259100	5750		WSC-102104.5750	JA	4656	10/31/2013	36.92		36.92

CO	BU	OBJ	SUB	DESCRIPTION	TY	DOC	DATE	DEBIT	CREDIT	NET
259	259101	6015		WSC-102101.6015	JA	4114	10/31/2013	48.12		48.12
259	259101	6015		WSC-102103.6015	JA	4117	10/31/2013	0.07		0.07
259	259101	6015		WSC-102107.6015	JA	4121	10/31/2013	0.68		0.68
259	259100	6015		WSC-102101.6015	JA	4114	10/31/2013	48.91		48.91
259	259100	6015		WSC-102103.6015	JA	4117	10/31/2013	0.07		0.07
259	259100	6015		WSC-102107.6015	JA	4121	10/31/2013	0.70		0.70

CO	BU	OBJ	SUB	DESCRIPTION	TY	DOC	DATE	DEBIT	CREDIT	NET
259	259101	6035		WSC-102103.6035	JA	4157	10/31/2013	22.41		22.41
259	259100	6035		WSC-102103.6035	JA	4157	10/31/2013	22.78		22.78

CO	BU	OBJ	SUB	DESCRIPTION	TY	DOC	DATE	DEBIT	CREDIT	NET
----	----	-----	-----	-------------	----	-----	------	-------	--------	-----

LT	PC	LVL6	LVL7	CO_NAME	REGION	STATE
AA	P	6350 - MAINTENANCE-WTR&SWR PLAN	OPER CONTRACTED WORKERS	Labrador Utilities Inc	SER	FL
AA	P	6350 - MAINTENANCE-WTR&SWR PLAN	OPER CONTRACTED WORKERS	Labrador Utilities Inc	SER	FL

7,705 7,577
Water Sewer

LT	PC	LVL6	LVL7	CO_NAME	REGION	STATE
UA	P	5730 - IT DEPARTMENT	COMPUTER MAINTENANCE	Labrador Utilities Inc	SER	FL
UA	P	5730 - IT DEPARTMENT	COMPUTER MAINTENANCE	Labrador Utilities Inc	SER	FL
UA	P	5730 - IT DEPARTMENT	COMPUTER MAINTENANCE	Labrador Utilities Inc	SER	FL
UA	P	5730 - IT DEPARTMENT	COMPUTER MAINTENANCE	Labrador Utilities Inc	SER	FL

LT	PC	LVL6	LVL7	CO_NAME	REGION	STATE
UA	P	5730 - IT DEPARTMENT	INTERNET SUPPLIER	Labrador Utilities Inc	SER	FL
UA	P	5730 - IT DEPARTMENT	INTERNET SUPPLIER	Labrador Utilities Inc	SER	FL

LT	PC	LVL6	LVL7	CO_NAME	REGION	STATE
UA	P	6000 - OUTSIDE SERVICE EXPENSE	EMPLOY FINDER FEES	Labrador Utilities Inc	SER	FL
UA	P	6000 - OUTSIDE SERVICE EXPENSE	EMPLOY FINDER FEES	Labrador Utilities Inc	SER	FL
UA	P	6000 - OUTSIDE SERVICE EXPENSE	EMPLOY FINDER FEES	Labrador Utilities Inc	SER	FL
UA	P	6000 - OUTSIDE SERVICE EXPENSE	EMPLOY FINDER FEES	Labrador Utilities Inc	SER	FL
UA	P	6000 - OUTSIDE SERVICE EXPENSE	EMPLOY FINDER FEES	Labrador Utilities Inc	SER	FL
UA	P	6000 - OUTSIDE SERVICE EXPENSE	EMPLOY FINDER FEES	Labrador Utilities Inc	SER	FL

LT	PC	LVL6	LVL7	CO_NAME	REGION	STATE
UA	P	6000 - OUTSIDE SERVICE EXPENSE	PAYROLL SERVICES	Labrador Utilities Inc	SER	FL
UA	P	6000 - OUTSIDE SERVICE EXPENSE	PAYROLL SERVICES	Labrador Utilities Inc	SER	FL

LT	PC	LVL6	LVL7	CO_NAME	REGION	STATE
----	----	------	------	---------	--------	-------

Month	Year
8	2013
8	2013

Month	Year
10	2013
10	2013
10	2013
10	2013

Month	Year
10	2013
10	2013

Month	Year
10	2013
10	2013
10	2013
10	2013
10	2013
10	2013

Month	Year
10	2013
10	2013

Month	Year
-------	------

259	259101	6050	WSC-102108.6050	JA	4192	10/31/2013	5.50	5.50
259	259101	6050	WSC-102105.6050	JA	4189	10/31/2013	58.30	58.30
259	259100	6050	WSC-102108.6050	JA	4192	10/31/2013	5.59	5.59
259	259100	6050	WSC-102105.6050	JA	4189	10/31/2013	59.27	59.27
259	259101	6050	EXCEL ENGINEERING CONSULTANTS	OV	151855	10/14/2013	2,365.05	2,365.05

3,474.54

CO	BU	OBJ	SUB	DESCRIPTION	TY	DOC	DATE	DEBIT	CREDIT	NET
259	259101	5735		WSC-102104.5735	JA	4625	11/30/2013	388.24		388.24
259	259100	5735		WSC-102104.5735	JA	4625	11/30/2013	394.56		394.56

CO	BU	OBJ	SUB	DESCRIPTION	TY	DOC	DATE	DEBIT	CREDIT	NET
259	259101	5750		WSC-102104.5750	JA	4656	11/30/2013	36.96		36.96
259	259101	5750		State of FL-855100.5750	JA	248415	11/30/2013	2.73		2.73
259	259100	5750		WSC-102104.5750	JA	4656	11/30/2013	37.57		37.57
259	259100	5750		State of FL-855100.5750	JA	248415	11/30/2013	2.78		2.78

CO	BU	OBJ	SUB	DESCRIPTION	TY	DOC	DATE	DEBIT	CREDIT	NET
259	259101	6035		WSC-102103.6035	JA	4157	11/30/2013	19.60		19.60
259	259100	6035		WSC-102103.6035	JA	4157	11/30/2013	19.92		19.92

CO	BU	OBJ	SUB	DESCRIPTION	TY	DOC	DATE	DEBIT	CREDIT	NET
259	259101	6050		WSC-102105.6050	JA	4189	11/30/2013	91.67		91.67
259	259101	6050		WSC-102107.6050	JA	4191	11/30/2013	50.99		50.99
259	259101	6050		State of FL-855100.6050	JA	251353	11/30/2013	12.99		12.99
259	259100	6050		WSC-102105.6050	JA	4189	11/30/2013	93.16		93.16
259	259100	6050		WSC-102107.6050	JA	4191	11/30/2013	51.82		51.82
259	259100	6050		State of FL-855100.6050	JA	251353	11/30/2013	13.20		13.20
259	259102	6050		SUNSHINE STATE ONE CALL OF FL	PV	561433	11/14/2013	0.91		0.91

UA	P	6000 - OUTSIDE SERVICE EXPENSE	OTHER OUTSIDE SERVICES	Labrador Utilities Inc	SER	FL
UA	P	6000 - OUTSIDE SERVICE EXPENSE	OTHER OUTSIDE SERVICES	Labrador Utilities Inc	SER	FL
UA	P	6000 - OUTSIDE SERVICE EXPENSE	OTHER OUTSIDE SERVICES	Labrador Utilities Inc	SER	FL
UA	P	6000 - OUTSIDE SERVICE EXPENSE	OTHER OUTSIDE SERVICES	Labrador Utilities Inc	SER	FL
AA	P	6000 - OUTSIDE SERVICE EXPENSE	OTHER OUTSIDE SERVICES	Labrador Utilities Inc	SER	FL

559 2,916
Water Sewer

LT	PC	LVL6	LVL7	CO_NAME	REGION	STATE
UA	P	5730 - IT DEPARTMENT	COMPUTER MAINTENANCE	Labrador Utilities Inc	SER	FL
UA	P	5730 - IT DEPARTMENT	COMPUTER MAINTENANCE	Labrador Utilities Inc	SER	FL

LT	PC	LVL6	LVL7	CO_NAME	REGION	STATE
UA	P	5730 - IT DEPARTMENT	INTERNET SUPPLIER	Labrador Utilities Inc	SER	FL
UA	P	5730 - IT DEPARTMENT	INTERNET SUPPLIER	Labrador Utilities Inc	SER	FL
UA	P	5730 - IT DEPARTMENT	INTERNET SUPPLIER	Labrador Utilities Inc	SER	FL
UA	P	5730 - IT DEPARTMENT	INTERNET SUPPLIER	Labrador Utilities Inc	SER	FL

LT	PC	LVL6	LVL7	CO_NAME	REGION	STATE
UA	P	6000 - OUTSIDE SERVICE EXPENSE	PAYROLL SERVICES	Labrador Utilities Inc	SER	FL
UA	P	6000 - OUTSIDE SERVICE EXPENSE	PAYROLL SERVICES	Labrador Utilities Inc	SER	FL

LT	PC	LVL6	LVL7	CO_NAME	REGION	STATE
UA	P	6000 - OUTSIDE SERVICE EXPENSE	OTHER OUTSIDE SERVICES	Labrador Utilities Inc	SER	FL
UA	P	6000 - OUTSIDE SERVICE EXPENSE	OTHER OUTSIDE SERVICES	Labrador Utilities Inc	SER	FL
UA	P	6000 - OUTSIDE SERVICE EXPENSE	OTHER OUTSIDE SERVICES	Labrador Utilities Inc	SER	FL
UA	P	6000 - OUTSIDE SERVICE EXPENSE	OTHER OUTSIDE SERVICES	Labrador Utilities Inc	SER	FL
UA	P	6000 - OUTSIDE SERVICE EXPENSE	OTHER OUTSIDE SERVICES	Labrador Utilities Inc	SER	FL
UA	P	6000 - OUTSIDE SERVICE EXPENSE	OTHER OUTSIDE SERVICES	Labrador Utilities Inc	SER	FL
AA	P	6000 - OUTSIDE SERVICE EXPENSE	OTHER OUTSIDE SERVICES	Labrador Utilities Inc	SER	FL

259	259102	6050	Labrador-259102.6050	JA	18827	11/30/2013		(0.91)	(0.91)
259	259101	6050	EXCEL ENGINEERING CONSULTANTS	OV	154431	11/18/2013	2,469.45		2,469.45
259	259101	6050	Labrador-259102.6050	JA	18827	11/30/2013	0.45		0.45
259	259100	6050	Labrador-259102.6050	JA	18827	11/30/2013	0.46		0.46

3,686.55

AA	P	6000 - OUTSIDE SERVICE EXPENSE	OTHER OUTSIDE SERVICES	Labrador Utilities Inc	SER	FL
AA	P	6000 - OUTSIDE SERVICE EXPENSE	OTHER OUTSIDE SERVICES	Labrador Utilities Inc	SER	FL
AA	P	6000 - OUTSIDE SERVICE EXPENSE	OTHER OUTSIDE SERVICES	Labrador Utilities Inc	SER	FL
AA	P	6000 - OUTSIDE SERVICE EXPENSE	OTHER OUTSIDE SERVICES	Labrador Utilities Inc	SER	FL

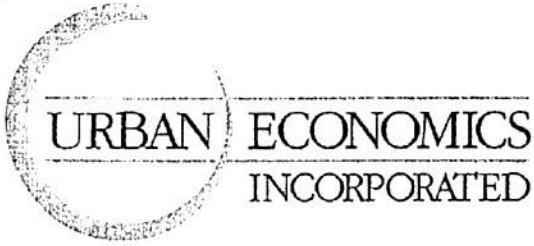
613	3,074
Water	Sewer

11	2013
11	2013
11	2013
11	2013

3049908

Batch 138550

Doc 467142



MICHAEL McELVEEN, MAI
State-Certified General Real Estate Appraiser RZ360

JOHN SABATINI, MAI
State-Certified General Real Estate Appraiser RZ1906

MARK BECKER, MAI
State-Certified General Real Estate Appraiser RZ1763

Invoice submitted to:
Patrick C. Flynn
Regional Director
Utilities, Inc., Southeast Region
200 Weathersfield Avenue
Altamonte Springs, FL 32714-4027

PAST DUE

July 19, 2012

In Reference To: Pasco County Property Appraiser Parcel ID
05-26-22-0020-OCA05-0000 and 32-25-22-0010-OCA00-0000

Invoice #12891 P0116093

Professional Services

For professional services rendered

Balance due

	<u>Amount</u>
	\$8,000.00
	<u>\$8,000.00</u>

RECEIVED

OCT 01 2012

RECEIVED

SEP 04 2012

Phyllis Luppino

From: Toni Federico
Sent: Monday, October 01, 2012 8:43 AM
To: Phyllis Luppino
Cc: Patrick Flynn
Subject: FW: Urban Economics invoice
Attachments: Forest Lakes UEI Past Due Invoice.pdf

Phyllis,

Can you issue this check today. The PO # is 116093.

Thanks Toni



Toni Federico
AP Supervisor
Utilities Inc.
Phone 847-897-6454
Fax 847-498-9596

From: Patrick Flynn
Sent: Tuesday, September 04, 2012 3:05 PM
To: Toni Federico
Subject: Urban Economics invoice

Hey, Toni,

Last month you set up this new vendor, 3049908, Urban Economics. I thought I generated an O6 as you directed to receipt against. Can you tell me if that's the case? I didn't have success looking it up on JDE but may have looked in the wrong place.

Thanks,
Patrick



May 14, 2013

Invoice submitted to:

Mr. Patrick C. Flynn
Regional Director
Utilities, Inc.
200 Weathersfield Avenue
Atlamonte Springs, FL 32714

Re: **Forest Lakes** PO-133923-06

Retainer Due - (25% total fee of \$25,250.00)

Balance Due

\$6,312.00

Thank you

RECEIVED

MAY 24 2013

MICHAEL A. McELVEEN, MAI
State-Certified General Real Estate Appraiser RZ360
MICHAEL P. LINEBAUGH
State-Certified General Real Estate Appraiser RZ3452

810 South Sterling Avenue
Tampa, FL 33609
813.289.8844

Batch 155636
Doc 521574

CP2012107

Patrick Flynn

Sent: Thursday, May 23, 2013 1:06 PM**To:** Nancy Luppino**Attachments:** Forest Lakes Retainer Invo~1.pdf (22 KB)

Good afternoon, Nancy,

The attached invoice reflects work being done under CP2012107, Labrador Eminent Domain project, PO#133923, Receipt# 140908. Please process for payment at your earliest convenience.

As I recall, checks are generated on Thursdays typically. I assume this is coming to you too late to be included in today's run. When might this be paid, next Thursday, then?

Thanks,

Patrick

3010537



Invoice

122 Wilshire Blvd.
Casselberry, FL 32707

Batch 166412

Doc 555690

Date	Invoice #
10/8/2013	9364

Bill To
Utilities Inc. of Labrador/Forest Lk c/o Mike Wilson 200 Wathersfield Avenue Altamonte Springs, FL 32714

RECEIVED
OCT 17 2013

P.O. No.	Terms	Project
UTI09-0213	15 DAYS	Labrador Utilities - ...

Description	Est Amt	Prior Amt	Prior %	Qty	Rate	Curr %	Total %	Amount
FOREST LAKE ESTATES IMPROVEMENTS TO WWTF UTI09-0213								
PO# 144692 BU# 249101 259101								
Consulting Engineering Services	15,743.00	2,361.45	15.00%	0.15	15,743.00	15.00%	30.00%	2,361.45
Copies					3.60			3.60

Thank you and God Bless - Please Make Check Payable to Excel Engineering Consultants, LLC

Total	\$2,365.05
Payments/Credits	\$0.00
Balance Due	\$2,365.05



Invoice

122 Wilshire Blvd.
Casselberry, FL 32707

Date	Invoice #
11/18/2013	9388

Bill To
Utilities Inc. of Labrador/Forest Lk c/o Mike Wilson 200 Wathersfield Avenue Altamonte Springs, FL 32714

Batch 168902
Doc 563867

P.O. No.	Terms	Project
UT109-0213	15 DAYS	Labrador Utilities - ...

Description	Est Amt	Prior Amt	Prior %	Qty	Rate	Curr %	Total %	Amount
FOREST LAKE ESTATES IMPROVEMENTS TO WWTF UT109-0213								
PO# 147109 BU# 259101								
Consulting Engineering Services	15,743.00	4,722.90	30.00%	0.15	15,743.00	15.00%	45.00%	2,361.45
Mileage					108.00			108.00

NOV 25 2013

Thank you and God Bless - Please Make Check Payable to Excel Engineering Consultants, LLC

Total	\$2,469.45
Payments/Credits	\$0.00
Balance Due	\$2,469.45

“2. d”

CO	BU	OBJ	SUB	DESCRIPTION	TY	DOC	DATE	DEBIT	CREDIT	NET	LT
259	259101	6215		RVP FL/South-6215	JA	277939	1/31/2013	0.14		0.14	UA
259	259101	6215		State of FL-855100.6215	JA	248417	1/31/2013	230.74		230.74	UA
259	259101	6215		WSC-102107.6215	JA	249472	1/31/2013	1.10		1.10	UA
259	259100	6215		RVP FL/South-6215	JA	277939	1/31/2013	0.15		0.15	UA
259	259100	6215		State of FL-855100.6215	JA	248417	1/31/2013	234.23		234.23	UA
259	259100	6215		WSC-102107.6215	JA	249472	1/31/2013	1.12		1.12	UA
259	259101	6215		FLEETWING CORPORATION	OV	132316	1/22/2013	1,060.28		1,060.28	AA
259	259100	6215		FLEETWING CORPORATION	OV	132146	1/17/2013	299.71		299.71	AA

CO	BU	OBJ	SUB	DESCRIPTION	TY	DOC	DATE	DEBIT	CREDIT	NET	LT
259	259101	6220		WSC-102107.6220	JA	249482	1/31/2013	0.02		0.02	UA
259	259101	6220		State of FL-855100.6220	JA	248418	1/31/2013	54.52		54.52	UA
259	259100	6220		WSC-102107.6220	JA	249482	1/31/2013	0.02		0.02	UA
259	259100	6220		State of FL-855100.6220	JA	248418	1/31/2013	55.34		55.34	UA

CO	BU	OBJ	SUB	DESCRIPTION	TY	DOC	DATE	DEBIT	CREDIT	NET	LT
259	259101	6225		State of FL-855100.6225	JA	248419	1/31/2013	0.52		0.52	UA
259	259100	6225		State of FL-855100.6225	JA	248419	1/31/2013	0.53		0.53	UA

1,938.42 591
Water

PC	LVL6	LVL7	CO_NAME	REGION	STATE	Month	Year
P	6210 - FLEET TRANSPORTATION EXP	FUEL	Labrador Utilities Inc	SER	FL	1	2013
P	6210 - FLEET TRANSPORTATION EXP	FUEL	Labrador Utilities Inc	SER	FL	1	2013
P	6210 - FLEET TRANSPORTATION EXP	FUEL	Labrador Utilities Inc	SER	FL	1	2013
P	6210 - FLEET TRANSPORTATION EXP	FUEL	Labrador Utilities Inc	SER	FL	1	2013
P	6210 - FLEET TRANSPORTATION EXP	FUEL	Labrador Utilities Inc	SER	FL	1	2013
P	6210 - FLEET TRANSPORTATION EXP	FUEL	Labrador Utilities Inc	SER	FL	1	2013
P	6210 - FLEET TRANSPORTATION EXP	FUEL	Labrador Utilities Inc	SER	FL	1	2013
P	6210 - FLEET TRANSPORTATION EXP	FUEL	Labrador Utilities Inc	SER	FL	1	2013

PC	LVL6	LVL7	CO_NAME	REGION	STATE	Month	Year
P	6210 - FLEET TRANSPORTATION EXP	AUTO REPAIR/TIRES	Labrador Utilities Inc	SER	FL	1	2013
P	6210 - FLEET TRANSPORTATION EXP	AUTO REPAIR/TIRES	Labrador Utilities Inc	SER	FL	1	2013
P	6210 - FLEET TRANSPORTATION EXP	AUTO REPAIR/TIRES	Labrador Utilities Inc	SER	FL	1	2013
P	6210 - FLEET TRANSPORTATION EXP	AUTO REPAIR/TIRES	Labrador Utilities Inc	SER	FL	1	2013

PC	LVL6	LVL7	CO_NAME	REGION	STATE	Month	Year
P	6210 - FLEET TRANSPORTATION EXP	AUTO LICENSES	Labrador Utilities Inc	SER	FL	1	2013
P	6210 - FLEET TRANSPORTATION EXP	AUTO LICENSES	Labrador Utilities Inc	SER	FL	1	2013

1,347

Sewer

3003354

FLEETWING CORPORATION
PO BOX 22
LAKELAND, FL 33802-0022

Phone: (863) 665-7557
Fax: (863) 665-7634

Page: 1
Batch 146941

Invoice No: 599312
Invoice Date: 01/09/13
Ship Date: 01/09/13
493365

Profit Center: 4100

Sold UTILITIES INC. OF FLORIDA
To: ACCOUNTS PAYABLE
2335 SANDERS RD
NORTHBROOK, IL 70062

Ship UTILITIES INC. OF FLORIDA
To: JOE KOONS
41311 PAQUETTE WAY
ZEPHYRHILLS, FL 33540 259

RELEASE #: 429096

125395

Account No: 74710061 PO No.:
Ship Via: FLEETWING CORPORATION

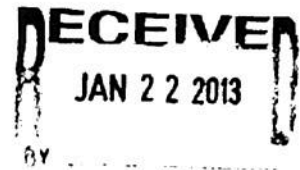
Sales ID: 000

Terms: NET 10 DAYS
BOL/Ship Order:

Product Code/ Description	Quantity Shipped	Price Each	Extension
B/L Number-- 429096			
## NA1993 DIESEL FUEL COMBUSTIBLE LIQUID NR			
## LM 500 DIESEL III			
01022000100			
RED DYED LOW SULFUR FUEL	250.0	3.866520	966.63
1 ENVIRONMENTAL FEE	1.0	7.950000	7.95
2 FUEL SURCHARGE	1.0	11.710000	11.71
FED/STATE ENVIRONMENTAL	250.0	0.022600	5.65
L.U.S.T.TAX	250.0	0.001000	0.25
SALES TAX FUEL		6.000000%	58.36
DISC SALES TAX DIESEL		1.000000%	9.73
DYED DIESEL FUEL NON TAXABLE USE ONLY PENALTY FOR TAXABLE USE			

IF NOT PAID BY DUE DATE REMIT THIS AMOUNT: 1,086.79

Total Amount: 1,060.28



EMERGENCY CONTACT: CHEMTREC 1-800-424-9300
We appreciate your business!

3003354

Batch 146941

FLEETWING CORPORATION
PO BOX 22
LAKELAND, FL 33802-0022

125396 Doc: 493367
Page: 1

Invoice No: 599313
Invoice Date: 01/09/13
Ship Date: 01/09/13

Phone: (863) 665-7557
Fax: (863) 665-7634

Profit Center: 4100

Sold UTILITIES INC. OF FLORIDA
To: ACCOUNTS PAYABLE
2335 SANDERS RD
NORTHBROOK, IL 70062

Ship UTILITIES INC. OF FLORIDA
To: 6425 FOREST LAKE DRIVE
ZEPHYRHILLS FL
WASTE WATER PLANT

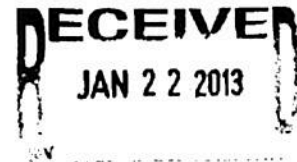
RELEASE #: 429099

Account No: 74710061 PO No.:
Ship Via: FLEETWING CORPORATION Sales ID: 000 Terms: NET 10 DAYS
BOL/Ship.Order:

Product Code/ Description	Quantity Shipped	Price Each	Extension
B/L Number-- 429099			
## NA1993 DIESEL FUEL COMBUSTIBLE LIQUID NR			
## LM 500 DIESEL III			
01022000100			
RED DYED LOW SULFUR FUEL	72.0	3.866500	278.39
FED/STATE ENVIRONMENTAL	72.0	0.022600	1.63
L.U.S.T.TAX	72.0	0.001000	0.07
SALES TAX FUEL		6.000000%	16.81
DISC SALES TAX DIESEL		1.000000%	2.81

DYED DIESEL FUEL
NON TAXABLE USE ONLY
PENALTY FOR TAXABLE USE

IF NOT PAID BY DUE DATE REMIT THIS AMOUNT: 307.20
Total Amount: 299.71



EMERGENCY CONTACT: CHEMTREC 1-800-424-9300
We appreciate your business!

“6.”

CO	BU	OBJ	SUB	DESCRIPTION	TY	DOC	DATE	DEBIT	CREDIT	NET	LT	PC	LVL6
259	259	2960		Neal, William L.	T4	1248	10/31/2013	161.24	100201	161.24	AA	P	2945 - OTHER DEFERRED CHARGES

LVL7	CO_NAME	REGION	STATE	Month	Year
DEF CHGS-TANK MAINT&REP WTR	Labrador Utilities Inc	SER	FL	10	2013

“7.”

3010537



122 Wilshire Blvd.
Casselberry, FL 32707

Invoice

Date	Invoice #
4/21/2010	8614

Bill To
Utilities Inc. of Florida Mike Wilson 200 Wathersfield Avenue Altamonte Springs, FL 32714

Batch 81360
Doc 256854

P.O. No.	Terms	Project
UT109-0109	Net 15	Labrador Utilities - ...

Quantity	Description	Rate	Amount
	Labrador Utilities, Inc. aka Forest Lake Estates WWTF Permit Renewal P.O # 54349 B.U. #259101 Change Order No. 1 Ground Water Monitoring Well Location Map	6,900.00	6,900.00

MAY 05 2010

Thank you and God Bless - Please Make Check Payable to Excel Engineering Consultants, LLC

Total \$6,900.00

“8.”



3010537

Invoice

122 Wilshire Blvd.
Casselberry, FL 32707

Date	Invoice #
6/30/2009	8368

Bill To
Utilities Inc. of Florida Mike Wilson 200 Wathersfield Avenue Altamonte Springs, FL 32714

Batch 600692
Doc 181468

P.O. No.	Terms	Project
UT109-0109	Net 15	Labrador Utilities - ...

Quantity	Description	Rate	Amount
0.8	Labrador Utilities, Inc. aka Forest Lake Estates WWTF Permit Renewal PO # 35859 BU #259101 39860 259101 Consulting Engineering Services <i>REV 7/16/09</i> ENTERED JUL 27 2009	3,900.00	3,120.00
Thank you and God Bless - Please Make Check Payable to Excel Engineering Consultants, LLC		Total	\$3,120.00



122 Wilshire Blvd.
Casselberry, FL 32707

3010537

Invoice

Date	Invoice #
8/17/2009	8406

Bill To
Utilities Inc. of Florida Mike Wilson 200 Wathersfield Avenue Altamonte Springs, FL 32714

Batch 63449
Doc 191486

P.O. No.	Terms	Project
UTI09-0109	Net 15	Labrador Utilities - ...

Quantity	Description	Rate	Amount
	Labrador Utilities, Inc. aka Forest Lake Estates WWTF Permit Renewal PO# 39860 BU# 259		
0.2	Consulting Engineering Services	3,900.00	780.00
	Copies	33.00	33.00
	UPS to FDEP	5.64	5.64
<p>ENTERED AUG 28 2009</p> <p>RECEIVED AUG 27 2009</p>			
Thank you and God Bless - Please Make Check Payable to Excel Engineering Consultants, LLC		Total	\$818.64



122 Wilshire Blvd.
Casselberry, FL 32707

3010537

Invoice

Date	Invoice #
11/3/2010	8762

Bill To
Utilities Inc. of Florida Mike Wilson 200 Waihersfield Avenue Altamonte Springs, FL 32714

Batch 94121

Doc 306608

P.O. No.	Terms	Project
UT109-0110	Net 15	Labrador Utilities - ...

Quantity	Description	Rate	Amount
0.1	Consulting Engineering Services ENTERED NOV 10 2010	4,800.00	480.00
Professional Engineering Services for Response to WWTF Permit Schedule P.O. #67208 B.U. #259101			
Thank you and God Bless - Please Make Check Payable to Excel Engineering Consultants, LLC		Total	5480.00

RECEIVED
NOV 08 2010

Batch 87458

3000890

Doc 279530

REQUEST FOR MANUAL/COMPUTER CHECK

PAYABLE TO: Florida Department of Environmental Protection

VENDOR # _____

INVOICE NO.: _____

\$ AMOUNT: \$300.00

MAIL TO: Marie Rhodes, Excel Engineering
122 Wilshire Blvd., Casselberry, FL 32707

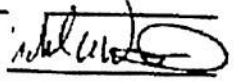
Three hundred dollars and no cents
(AMOUNT WRITTEN OUT)

INV. DATE: _____

PURPOSE: Labrador-Forest Lake Utilities
WWTF Permit Minor Modification

CODES: 259101 AMOUNTS:
PO# 65073 \$300.00

REQUESTED BY: Miko Wilson DATE NEEDED: 07/08/10

ACCT. DIV. APPROVAL: 

RECEIVED
AUG 02 2010

ENTERED
AUG 02 2010



122 Wilshire Blvd.
Casselberry, FL 32707

3010537

Invoice

Date	Invoice #
3/19/2010	8593

Bill To
Utilities Inc. of Florida Mike Wilson 200 Watersfield Avenue Altamonte Springs, FL 32714

Batch 78942

Doc 248185

P.O. No.	Terms	Project
UT101-0109	Net 15	Labrador Utilities - ...

Quantity	Description	Rate	Amount
	Labrador Utilities, Inc. aka Forest Lake Estates WWTF Permit Renewal Additional Services PO # 55503 BU # 259101 Project review and coord; coord w/ Client and FDEP re: RAI #2 and update for effluent analysis sampling; update effluent analysis report per additional sampling information; prepare/finalize and submit RAI #2 response and effluent analysis report; coord w/ FDEP re: draft DMR and sampling requirements		
1.75	Principal	175.00	306.25
1	Sr. Engineering Technician	65.00	65.00
5.75	Sr. Clerical	55.00	316.25
	Copies	2.00	2.00
<p>RECEIVED</p> <p>MAR 30 2010</p>		<p>RECEIVED</p> <p>MAR 29 2010</p>	
Thank you and God Bless - Please Make Check Payable to Excel Engineering Consultants, LLC			Total
			\$689.50



122 Wilshire Blvd.
Casselberry, FL 32707

Invoice

Date	Invoice #
8/3/2010	8695

BIH To Utilities Inc. of Florida Mike Wilson 200 Watersfield Avenue Altamonte Springs, FL 32714

3010537

Batch 90028

Doc. 289850

P.O. No.	Terms	Project
UT109-0110	Net 15	Labrador Utilities - ...

Quantity	Description	Rate	Amount
0.3	Consulting Engineering Services Professional Engineering Services for Response to WWTF Permit Schedule P.O. # 67208 B.U. # 259101	4,800.00	1,440.00

ENTERED

SEP 08 2010

RECEIVED

SEP 07 2010

Thank you and God Bless - Please Make Check Payable to Excel Engineering Consultants, LLC	Total	\$1,440.00
---	--------------	------------



122 Wilshire Blvd.
Casselberry, FL 32707

3610537

Invoice

Date	Invoice #
9/1/2010	8719

Bill To
Utilities Inc. of Florida Mike Wilson 200 Wathersfield Avenue Altamonte Springs, FL 32714

Batch 90370
Doc 290740

P.O. No.	Terms	Project
UTI09-0110	Net 15	Labrador Utilities - ...

Description	Est Amt	Prior Amt	Prior %	Qty	Curr %	Total %	Amount
Professional Engineering Services for Response to WWTP Permit Schedule P.O. 67208 B.U. 259101							
Consulting Engineering Services	4,800.00	1,440.00	30.00%	0.4	40.00%	70.00%	1,920.00
UPS to FDEP, 8/17/10 Copies							6.15 2.40
<p>ENTERED SEP 14 2010</p> <p>RECEIVED SEP 13 2010</p>							
Thank you and God Bless - Please Make Check Payable to Excel Engineering Consultants, I.I.C.						Total	\$1,928.55



122 Wilshire Blvd.
Casselberry, FL 32707

3010537

Invoice

Date	Invoice #
1/12/2010	8540

Bill To Utilities Inc. of Florida Mike Wilson 200 Watersfield Avenue Altamonte Springs, FL 32714

Batch 74545

Doc 231032

P.O. No.	Terms	Project
UT109-0109	Net 15	Labrador Utilities - ...

Quantity	Description	Rate	Amount
	Labrador Utilities, Inc. aka Forest Lake Estates WWTF Permit Renewal RAI Response - Additional Services PO: 51409 BU: 259101 Project review and coord; coord w/ Client re: RAI response; prepare exhibits and Effluent Analysis report in accordance with RAI comments; prepare and submit RAI response to FDEP		
4	Principal	175.00	700.00
2.5	Sr. Engineering Technician	65.00	162.50
7	Sr. Clerical	55.00	385.00
	Copies	5.40	5.40
	UPS to FDEP, 12/18/09	5.70	5.70
Thank you and God Bless - Please Make Check Payable to Excel Engineering Consultants, LLC		Total	\$1,258.60

ENTERED

JAN 25 2010

RECEIVED

JAN 25 2010

“9.”

2013

2013

Utilities, Inc.
Audit of Affiliate Transactions
Test Year Ended December 31, 2013
Dkt 140060-W.S., ACN 14-197-1-1

Description:

Company Organizational Chart

2013



Organizational Chart

As of 4/30/2014

Table of Contents

Executive Leadership.....3

Shared Services: Corporate Accounting, IT,
Admin. Services, Human Resources,
Billing, HSE, Customer Service..... 4-6

Operations: Nevada & Arizona..... 7

Operations: North Carolina & Tennessee..... 8

Operations: South Carolina..... 10

Operations: Florida..... 11-12

Operations: IL, IN, KY, PA, MD, NJ, VA..... 13-14

Operations: Louisiana & Georgia..... 15

Utilities, Inc.
Audit of Affiliate Transactions
Test Year Ended December 31, 2013
Dkt. 140060-WS; ACN 14-197-1-1

Description:



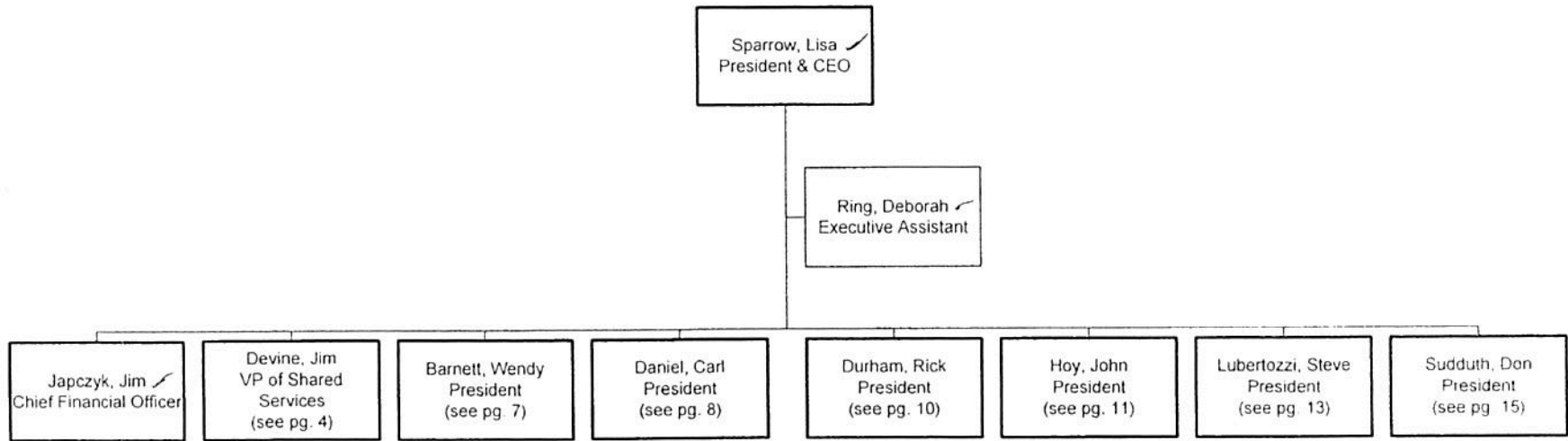
4/30/14

Executive Leadership

As of 4/30/2014

Utilities, Inc.
Audit of Affiliate Transactions
Test Year Ended December 31, 2013
Dkt 140060-WS; ACN 14-197-1-1

Description: 9-9 Contract



44-8,3

44-8,10

1. Traced to WSC Salary List w/o 2012 figures

Key
☐ = repeat position



Shared Services

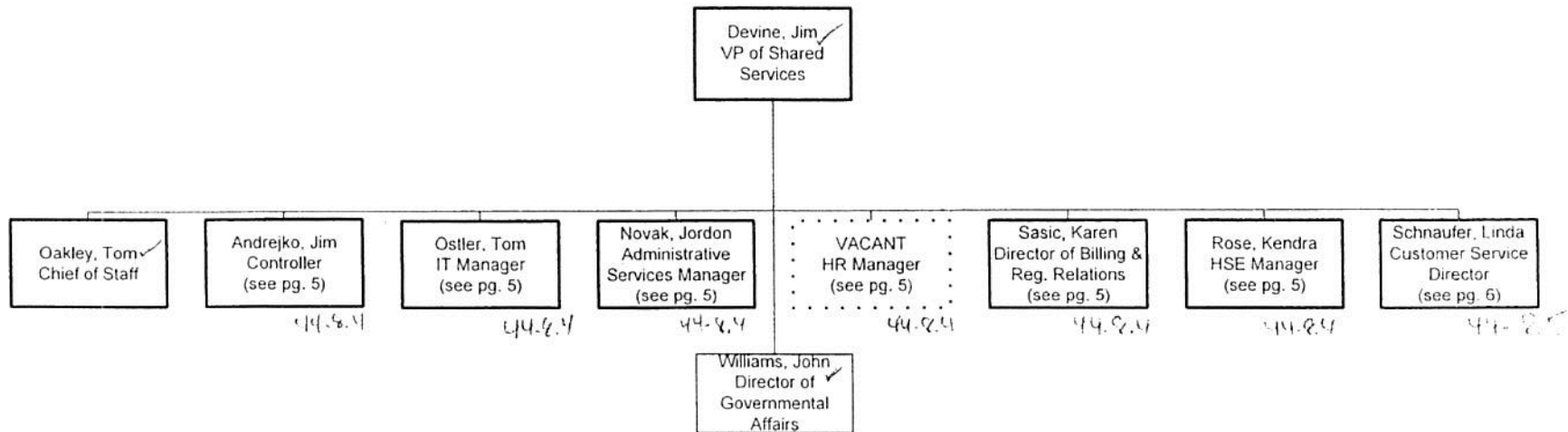
As of 4/30/2014

44-8.2

Utilities, Inc.
Audit of Affiliate Transactions
Test Year Ended December 31, 2013
Dkt 140060-AVS; ACN 14-197-1-1

Description:

44-8.2



✓ - Traced to WSC Salary List up on exception to

Key

☒ = repeat position



4/14/14

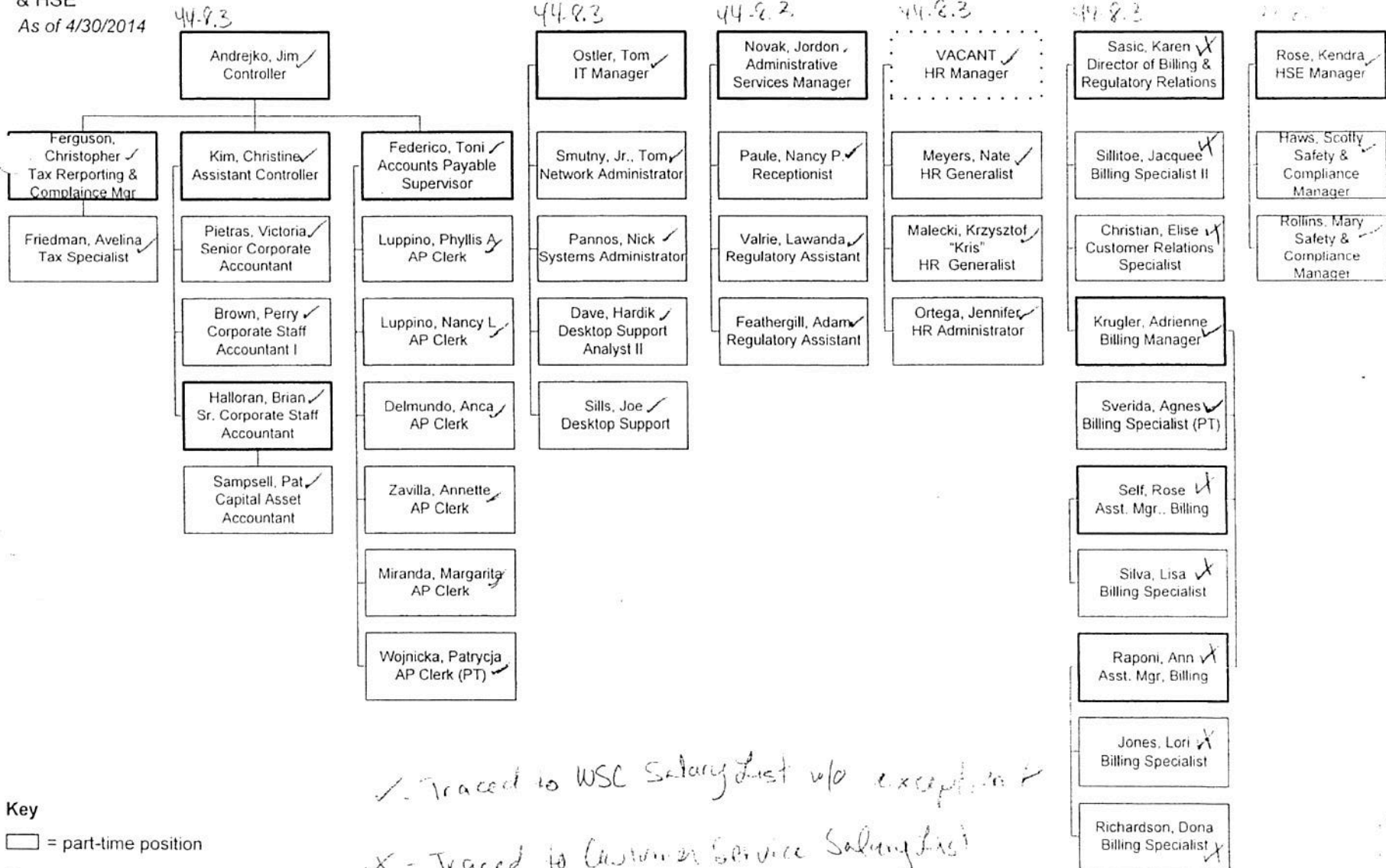
Utilities, Inc.
 Audit of Affiliate Transactions
 Test Year Ended December 31, 2013
 Dkt 140060-WS; ACN 14-497-1-1

Description: Org Chart

Shared Services:

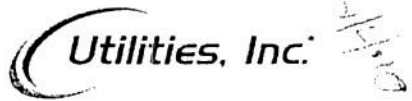
Corporate Accounting, IT,
 Admin. Services, HR, Billing
 & HSE

As of 4/30/2014



Key
 □ = part-time position

✓ - Traced to WSC Salary List w/o exception
 X - Traced to Customer Service Salary List w/o exception



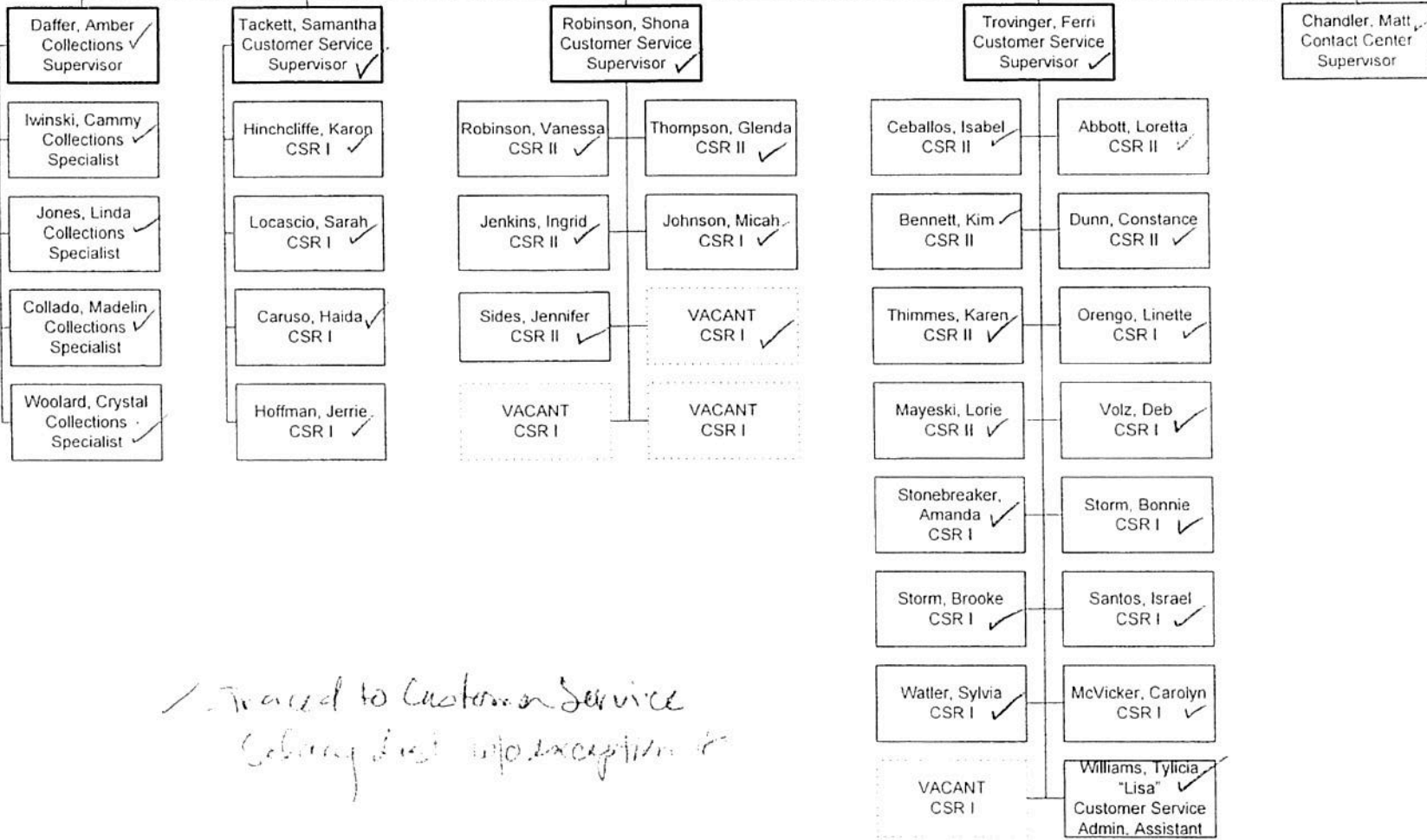
Utilities, Inc.
 Audit of Affiliate Transactions
 Test Year Ended December 31, 2013
 Dkt 140060-AVS; ACN 14-197-1-1

Description: Org Chart

44 8, 2

Shared Services: Customer Service
 As of 4/30/2014

Schnauer, Linda
 Customer Service
 Director ✓



*Traced to Customer Service
 Salary list info exception 4*

Key
 □ = part-time position



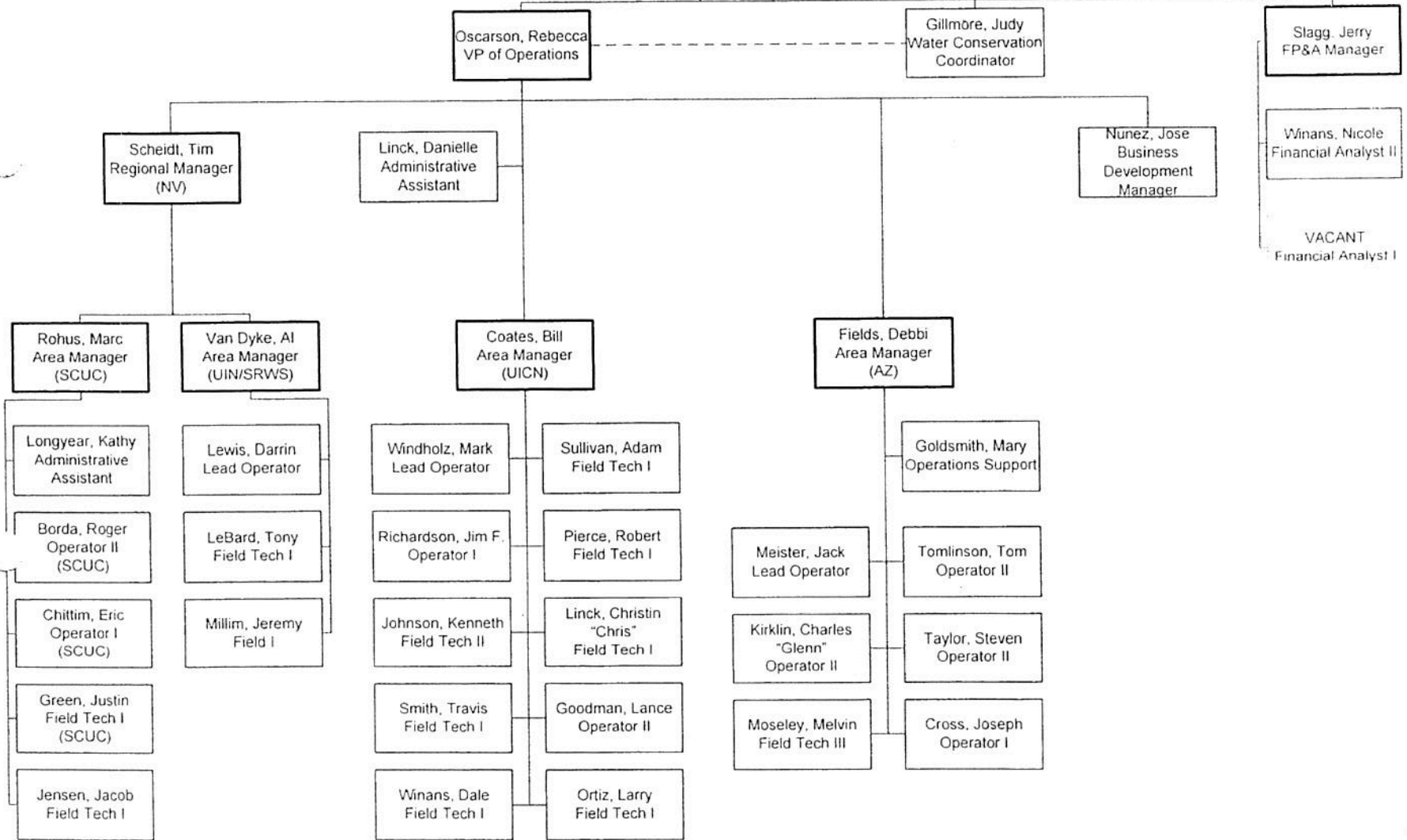
Operations: AZ & NV

As of 4/30/2014

Barnett, Wendy
President

Utilities, Inc.
Audit of Affiliate Transactions
Test Year Ended December 31, 2013
Dkt 140060-WS; ACN 14-197-1-1

Description: *Org Chart*

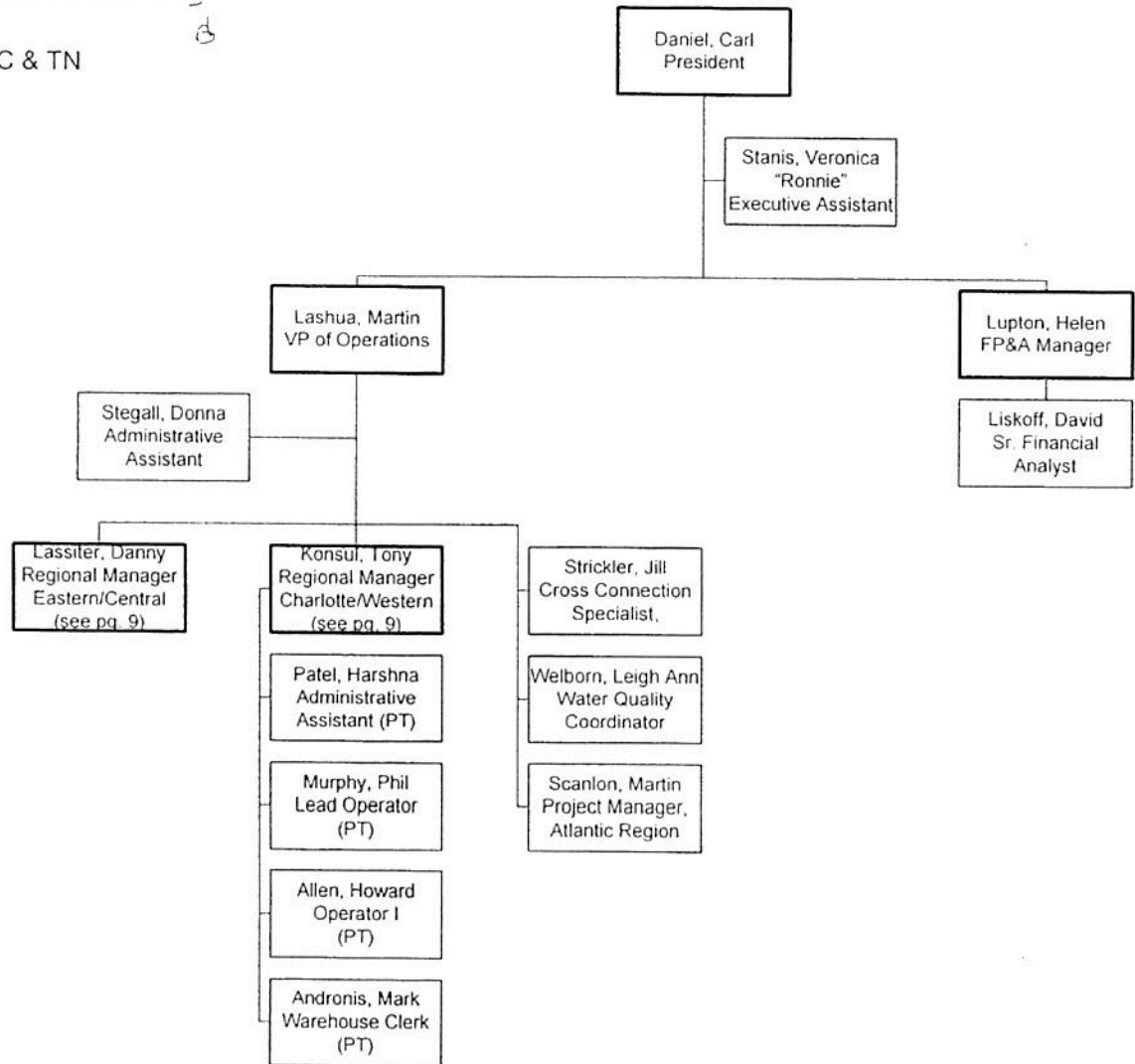




Operations: NC & TN

As of 4/30/2014

5/11/14
D



Utilities, Inc.
 Audit of Affiliate Transactions
 Test Year Ended December 31, 2013
 Dkt 140060-WS; ACN 14-197-1-1
 Description:

Key

- = repeat position
- = part-time position



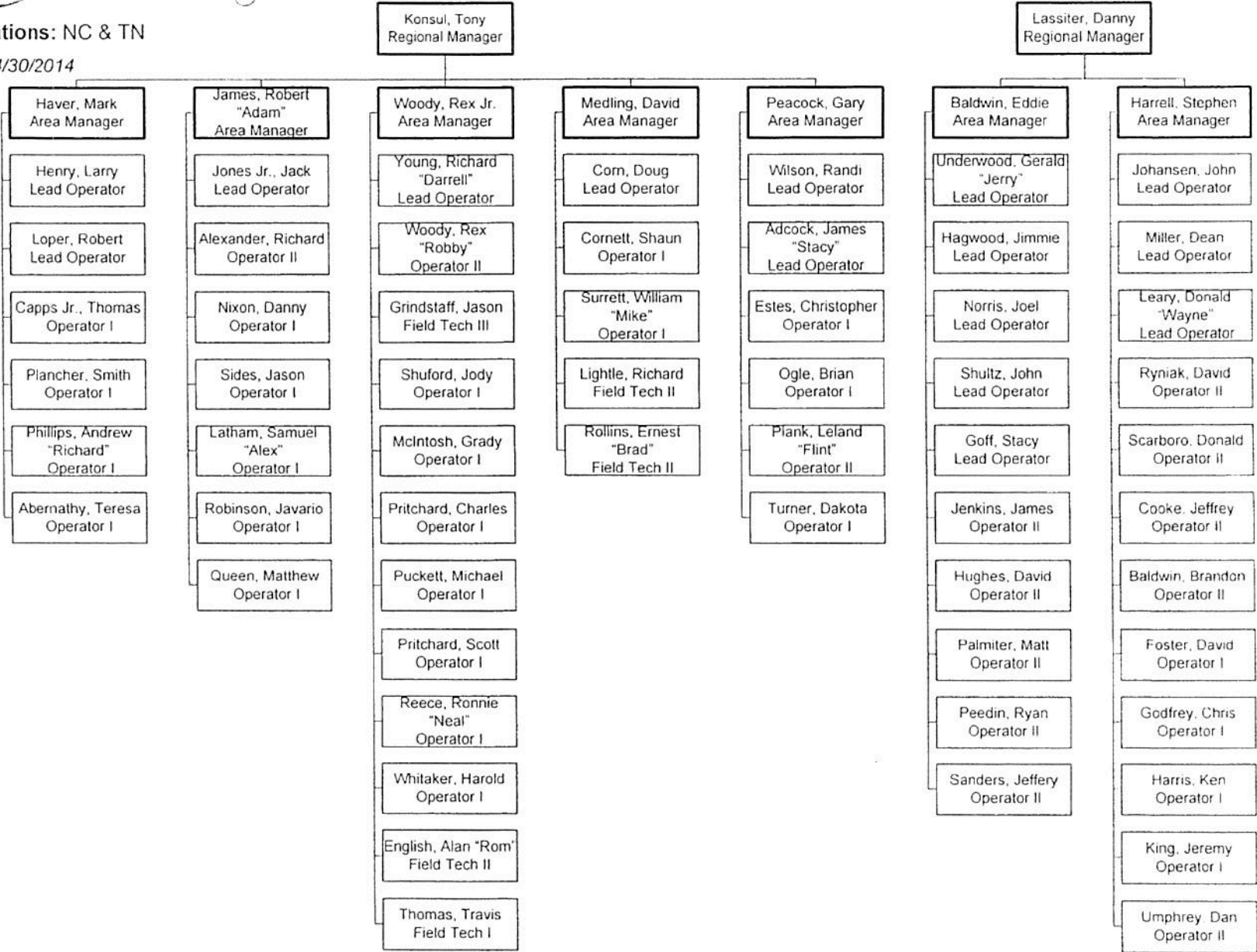
4/30/14

Utilities, Inc.
 Audit of Affiliate Transactions
 Test Year Ended December 31, 2013
 Dkt 140060-WS; ACN 14-197-1-1

Description: Org Chart

Operations: NC & TN

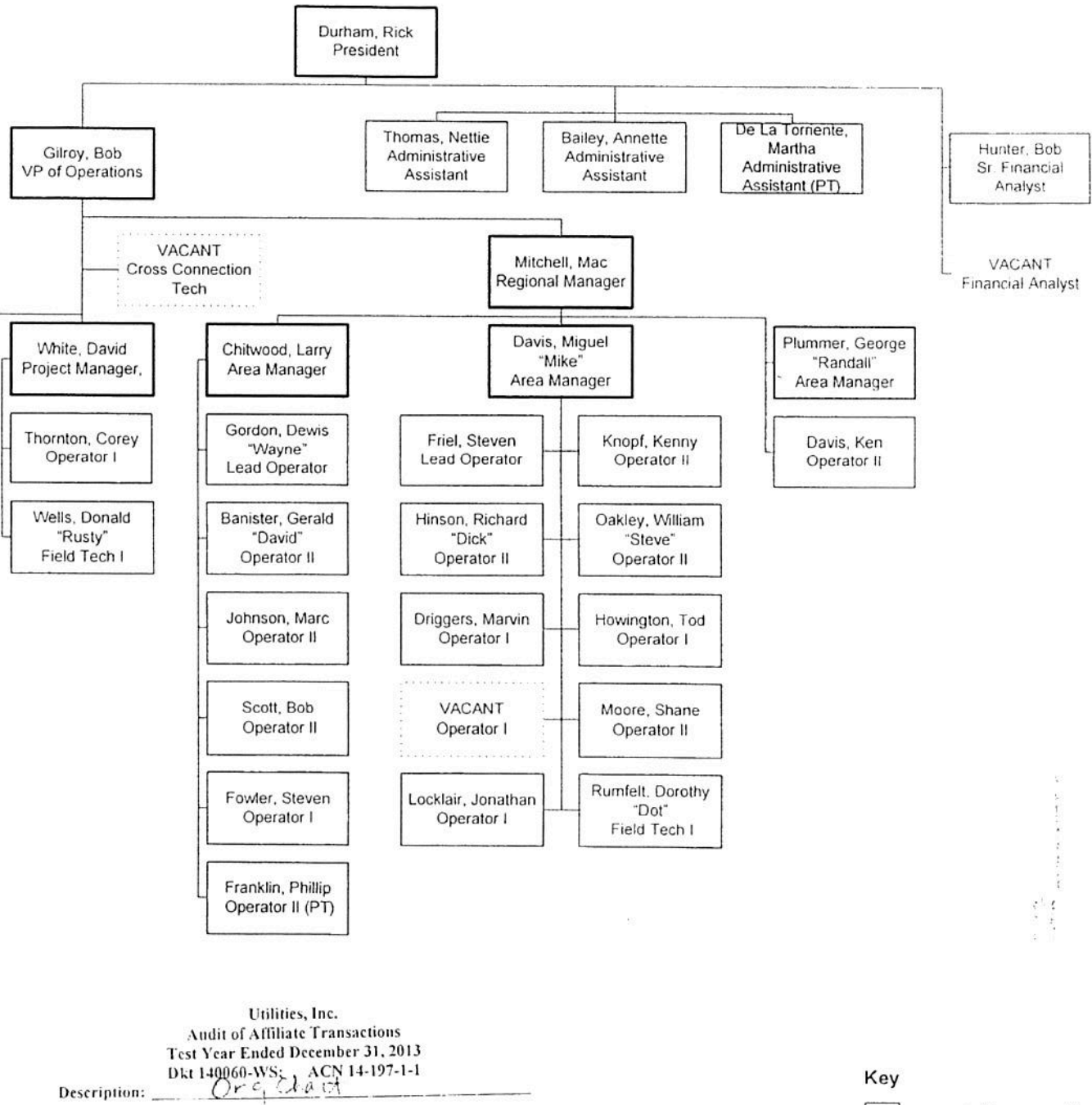
As of 4/30/2014





Operations: SC

As of 4/30/2014

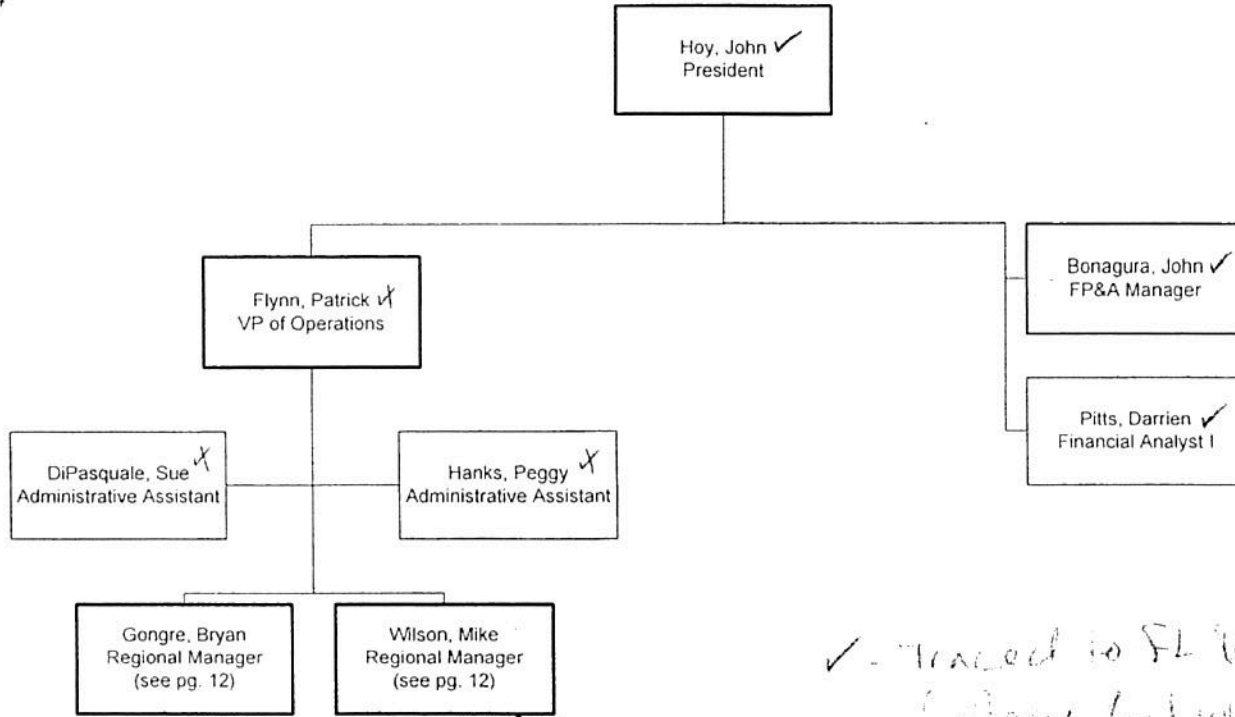


Utilities, Inc.
 Audit of Affiliate Transactions
 Test Year Ended December 31, 2013
 Dkt 140060-WS; ACN 14-197-1-1

Description: Org Chart

Key
 □ = part-time position

44.8.2



Utilities, Inc.
 Audit of Affiliate Transactions
 Test Year Ended December 31, 2013
 Dkt 140060-WS; ACN 14-197-1-1

Description:

✓ - Traced to FL Regional Salary Schedule

x - Traced to Local Union Laborer Operator title exception

Key

☐ = repeat position



Operations: FL

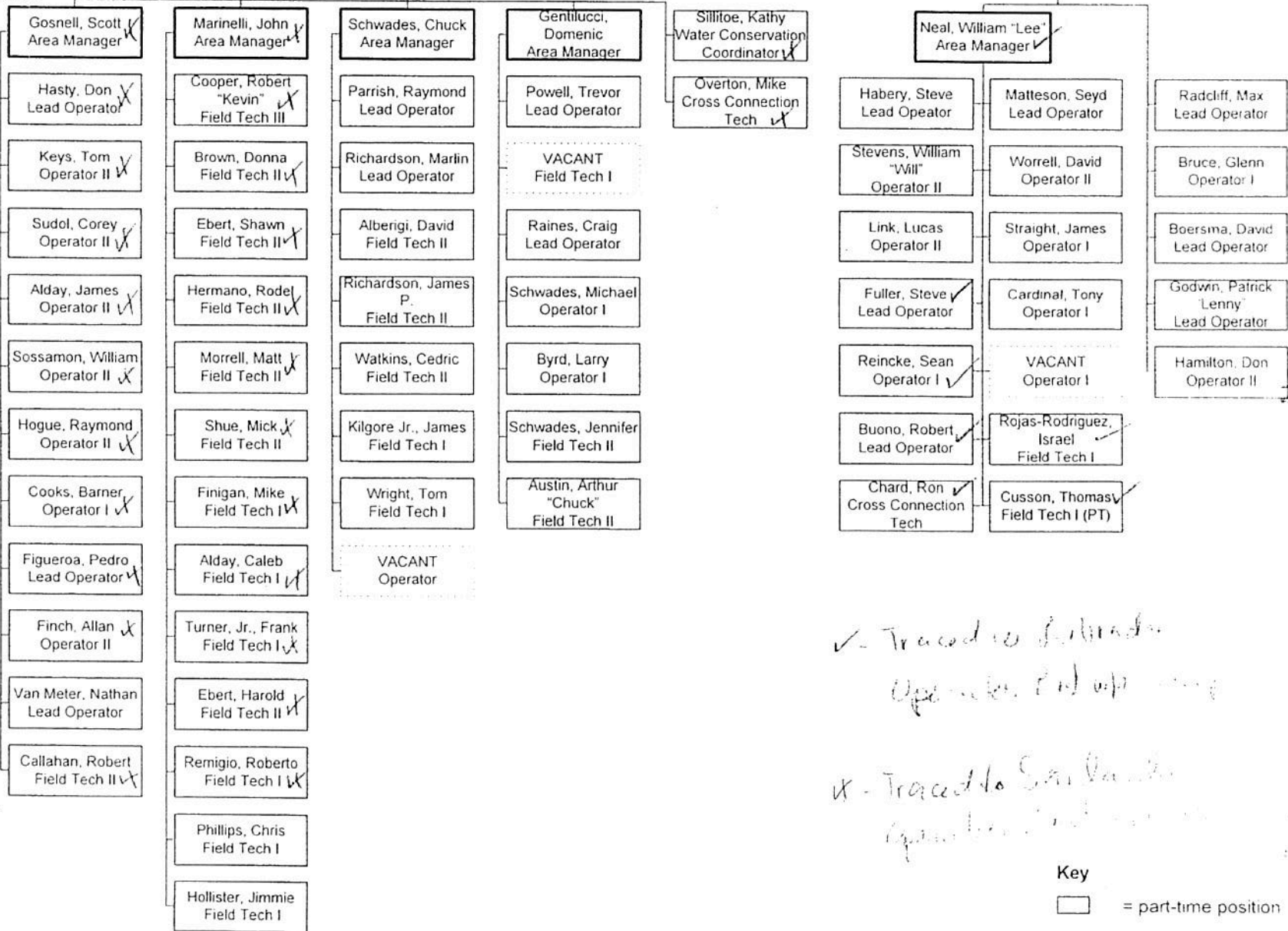
As of 4/30/2014

44-8.10

Gongre, Bryan
Regional Manager

44-8.10

Wilson, Mike
Regional Manager



Utilities, Inc.
 Audit of Affiliate Actions
 Test Year Ended Dec 31, 2013
 Dkt 140060-WS; ACN 14-197-1-1
 Description:

✓ - Traced to full-time
Operator part-time

✗ - Traced to San Juan
Operator part-time



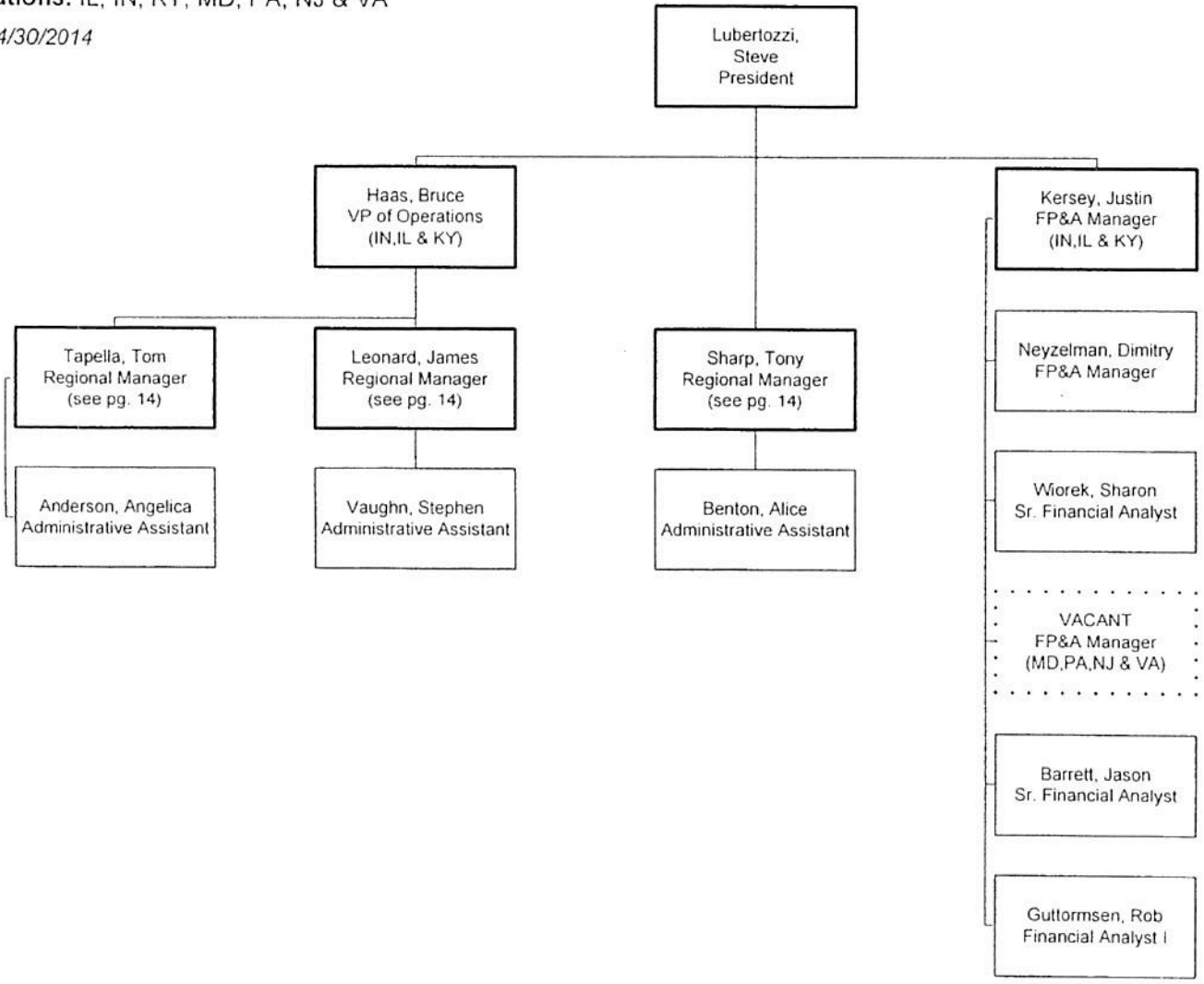
Handwritten: 4/1/14

Utilities, Inc.
Audit of Affiliate Transactions
Test Year Ended December 31, 2013
Dkt 149060-WS; ACN 14-197-1-1

Description: *Org Chart*

Operations: IL, IN, KY, MD, PA, NJ & VA

As of 4/30/2014



Key

= repeat position



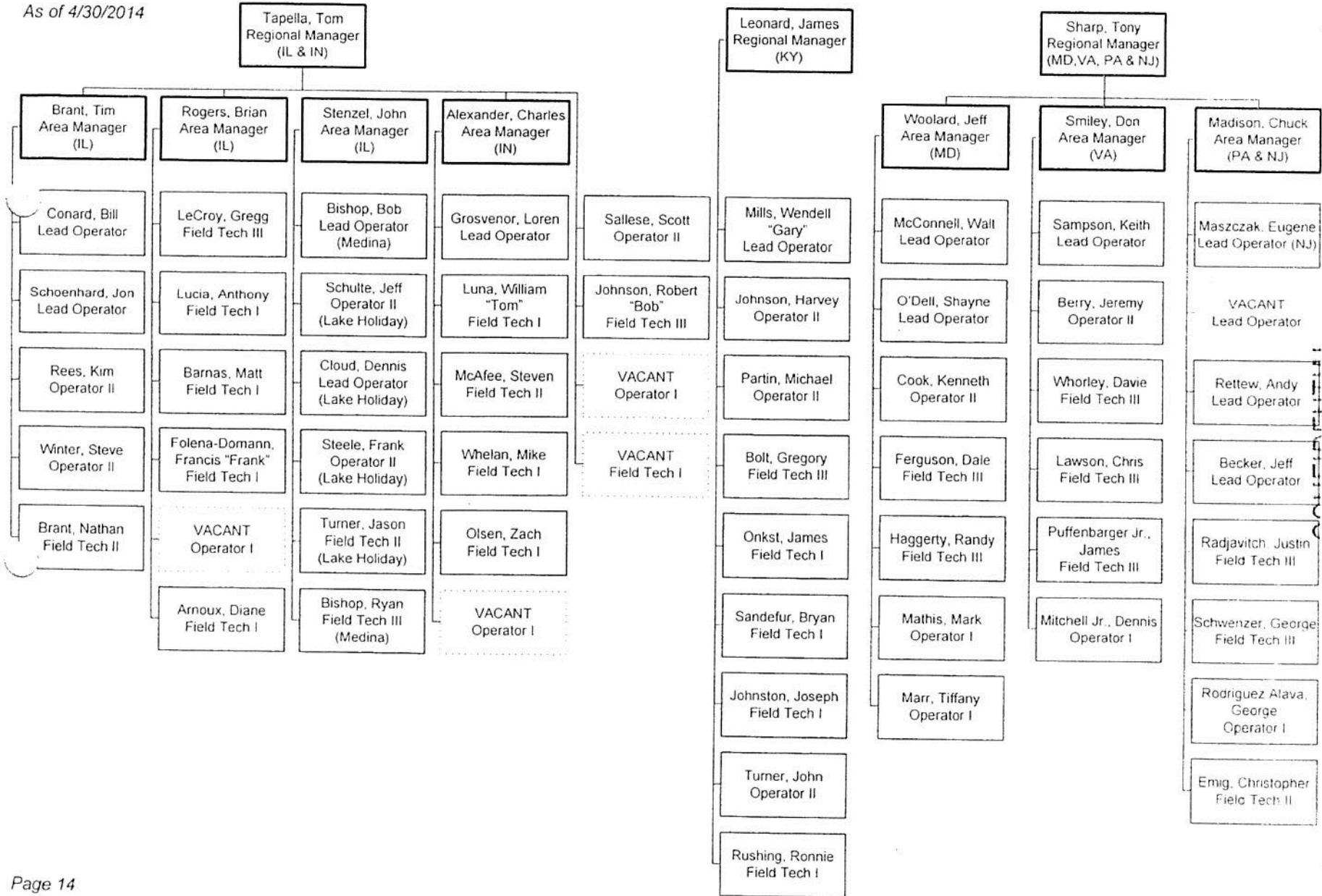
4/30/14
 01/10/14

Utilities, Inc.
 Audit of Affiliate Transactions
 Test Year Ended December 31, 2013
 Dkt 140060-VS; ACN 141197-1-1

Description: Org Chart

Operations: IL, IN, KY, MD, PA, NJ & VA

As of 4/30/2014





Handwritten note: 1/14/14

Operations: LA & GA

As of 4/30/2014

Utilities, Inc.
 Audit of Affiliate Transactions
 Test Year Ended December 31, 2013
 Dkt 140060-WS; ACN 14-197-1-1

Description: *Org Chart*

Sudduth, Don
 President

Williams, Delos
 VP of Operations

Sowell, Bill
 Corporate Service
 Manager

Rajendran,
 Saravanan
 FP&A Manager

Cocran, Jeff
 Regional Manager
 (LA)

Medders, Billy
 "Ron"
 Regional Manager
 (GA)

Carver, Nate
 Mgr of Business
 Development

Norwoods,
 Regence
 Financial Analyst II

Collie, Linda
 Administrative
 Assistant

Graham, Vivian
 Administrative
 Assistant

Dotson, Margaret
 "Bunny"
 Administrative
 Assistant (PT)

Brandt, Michael
 Area Manager

Kennedy, Alvin
 Area Manager

Chambless, Jay
 Area Manager

Lanier, Wayne
 "Clayton"
 Area Manager

Green Jr., Horace
 Operator II

Cook, Gregory
 Operator II

Kilgore, James
 Lead Operator

Moncrief, David
 Lead Operator

Gladstone, Garrett
 Operator II

Milford, Steven
 Operator I

Burkhalter, Vincent
 Operator II

Williams, Susan
 Operator II

Dozier, Matthew
 Operator I

Christie, Charles
 Operator II

Thompson, Kris
 Operator I

Meardiy, Tarquin
 Operator I

Reiners, Barry
 Operator II

Allen, Christopher
 "Scott"
 Operator I

Fulcher, Robert
 Operator I

Moran, Joshua
 Field Tech I

Ponthier, Brandon
 Maintenance
 Worker (PT)

Ussery, Jonathan
 Field Tech I

Cooksey, Johnnie
 Field Tech I

Gavin, Malcolm
 Operator II (PT)

Davis, Gentry
 Maintenance
 Worker (PT)

Polk, Ryan
 Maintenance
 Worker (PT)

VACANT
 Field Tech I (PT)

Key

= part-time position