

FLORIDA UTILITY SERVICES 1, LLC
3336 GRAND BLVD
SUITE 102
HOLIDAY, FL. 34690
863-904-5574

Commission Clerk
Florida Public Service Commission
2540 Shumard Oak Blvd.
Tallahassee, FL. 32399

RE: Docket # 140177-WU. Company response to staff questions.

Dear Commission Clerk:

Please add the following company response to the above docket file.

★Original plus (4) copies of cover letter - CTC 1/28/15

RECEIVED - FPSC
15 JAN 28 AM 11:05
COMMISSION CLERK

1. The utility has recorded very few customer service issues. Perhaps the most numerous were the previous owner sent the customer bills on a postcard. I have since changed that practice and we are now sending customer bills in an envelope. In 2013-2014, the utility received verbal complaints in the utility office in regards to the implementation of the late fee that was granted to the utility in a rate case. Also in 2013-2014, there were some inquiries on if we would be able to accept payment with credit cards. In 2010-2014 utility staff recorded a complaint from Mr. Bock of 5013 Janice Lane. He stated the water had a bad smell. The action taken was to dispatch the operator at that time. Utility did not record the outcome but have had no further complaints.
2. Other than the previously submitted Remedial action Plan with the water management district, the utility does not have any outstanding enforcement actions. At this time the utility does not anticipate any further water quality issues other than adjusting the flushing schedule. The next DEP inspection is scheduled for January 27th 2015. Utility will provide a copy of the report to the docket file when it is received.
3. Enclosed. There is no planned plant expansion. However, two new hydro tanks were installed around 2012 along with the mixing line. Tank at well #2 was installed around 2007.
4. Emailed.
5. I have already replaced the check valve at well #1. I have replaced the flow meter at well#2. So far the check valve at well#2 is operating correctly but will need to be replaced asap.

COM _____
 AFD _____
 APA _____
 ECO _____
 ENG All _____
 GCL _____
 IDM _____
 TEL _____
 CLK _____

Requested Pro-Forma Items for Holiday Gardens.

Well #1- replace flow meter and re-plumb in schedule 80. Remove block wall, repaint outside of the building and replace the leaking roof. Replace air relief valve. Replace turbine pump with new submersible pump.

Well #2- Replace check valve and re-plumb in schedule 80, remove block wall, repaint outside of building and replace leaking roof. Add 4" gate valve to the out flow line for isolation. Add Whitewater air compressor.

System wide.

1. Continue to replace customer meters.
2. Dig up and find and replace Isolation valves. Since I do not know the size and type of these valves, I am unable to give an exact cost. According to the map, it looks like most of the valves are 2" and we get them from Lowes and they are about \$36.00 for the valve and 2 compression couplers.

Requested jointly purchased Items.

1. Portable Fire Hydrant meter
2. Lawn mower (I have already purchased the weed eater and blower).

On behalf of the utility,


Mike Smallridge

Holiday Gardens Utilities, Inc

Year 2013	Jan	Feb	March	April	May	June	July	Aug	Sept	Oct	Nov	Dec
Pumped	2148	2048	2517	3096	2737	2350	2222	2124	1977	2054	2005	2137
Purchased	XXXXXX	XXXXXX	XXXXXX	XXXXXX	XXXXXX	XXXXXX	XXXXXX	XXXXXX	XXXXXX	XXXXXX	XXXXXX	XXXXXX
Sold	1724	1690	1586	1629	1633	1845	1774	1455	1522	1685	1703	1497
Other Uses	114	114	931	1467	1104	162	228	149	403	215	179	342
Year 2014	Jan	Feb	March	April	May	June	July	Aug	Sept	Oct	Nov	Dec
Pumped	1840	1852	2050	2306	2994	2431	2431	2312	2487	1998	2642	2642
Purchased	XXXXXX	XXXXXX	XXXXXX	XXXXXX	XXXXXX	XXXXXX	XXXXXX	XXXXXX	XXXXXX	XXXXXX	XXXXXX	XXXXXX
Sold	1926	1533	1430	1987	1982	1920	1939	2010	1725	2427	1367	1697
Other Uses	-86	319	620	318	1012	511	492	302	762	571	1275	945

Holiday Gardens Utilities, LLC						
Well #1						
Project	Benefit / Reason	Vendor Selected	Estimated Cost	Contract Date	Start Date	Estimated Complete Date
Replace well pump	old	Pope's Well Co	\$8,900	TBD	ASAP	30-60 Days
Repipe Air Relief Valve	Replace Galv.	Self	\$1,800	none	ASAP	30-60 Days
Repaint Roof	old Leaking	Home Depot TBD	\$200 \$4,000	TBD TBD	ASAP ASAP	30 Days unknown
Flow Meter	Not Accurate	Self	\$1,500	none	ASAP	30 Days
Well #2						
Project	Benefit / Reason	Vendor Selected	Estimated Cost	Contract Date	Start Date	Estimated Complete Date
Check Valve	old	USA BlueBook Self	\$800	none	ASAP	30-60 Days
Replumb	old	USA BlueBook Self	\$1,800	none	ASAP	30-60 Days
Repaint Roof	Old Leaking	Home Depot TBD	\$200 \$4,000	none none	ASAP ASAP	30 Days 30-60 Days
4" Gate Valve	Isolation of Well	USA BlueBook Self	\$750	none	ASAP	60-180 Days
Air Compressor	System Pressure	USA BlueBook Self	\$1,500	none	ASAP	60-180 Days

PRO-FROMA ITEMS FOR
HOLIDAY GARDENS

Pasco: 727-364-4485
 Pinellas: 727-266-9995
 Hillsborough: 813-391-7023
 Hernando: 352-263-0873
 Fax: 727-940-5441
 Email: professionalroofing@live.com
 www.usa-roofs.com



THE ROOFING PROFESSIONALS

State Certified Roofing Contractor
 Lic.#CCC1330194
 FULLY LICENSED
 BONDED & INSURED
 FREE ESTIMATES



PROPC	Holiday Gardens	PHONE	937-6275	DATE	
STREET	3336 Grand Blvd LLC	LOCATION			
CITY, STATE, ZIP	Holiday	OTHER			

We hereby submit specifications and estimates for:

Roof Replacement on (2)
 well house

- Remove existing roof down to wood decking
- Replace any Rotted wood
- Install metal Roof 5V Crimp
- Clean + haul away all Debris

includes (1) sheet of plywood Replacement per house
 5 year warranty on Workmanship

We propose hereby to furnish material and labor - complete in accordance with these specifications for the sum of:

\$ 6000.00 each dollars \$ 12,000 total

Payable as follows:

All material is guaranteed to be as specified. All work to be completed in a workmanlike manner according to standard practices. Any alterations or deviation from above specifications involving extra costs will be executed only upon written orders, and will become an extra charge over and above the estimate payable upon completion of the work contained in said change order. All agreements contingent upon strikes, accidents or delays beyond our control. Owner to carry fire, tornado and other necessary insurance. Our workers are fully covered by Workman's Compensation Insurance.

Authorized Signature

Patrick Hloske

NOTE: This proposal may be withdrawn by us if not accepted within _____ days.

ACCEPTANCE OF PROPOSAL

The prices, specifications and conditions are satisfactory and hereby accepted. You are authorized to do the work as specified. Payment will be made as outlined above.

Signature _____ Date _____ Signature _____ Date _____

MAINTENANCE Paint & Coatings



Rust-Oleum® Hard Hat Industrial Aerosols

- Ideal for applying a quick touch-up to hydrants after testing
- All colors match their corresponding fire hydrant paint colors



Hard Hat industrial aerosols produce a tough, flexible film which resists chipping, cracking and peeling. Superior color and gloss retention with a fast drying time. Low VOCs. These 15-oz net wt cans are sold individually or in convenient 6-packs.

DESCRIPTION	STOCK #	EACH	QTY 6+
Gray Primer	48047	\$ 6.99	\$ 6.64
OSHA Safety Red	48039	6.99	6.64
OSHA Safety Yellow	48040	6.99	6.64
OSHA Safety Blue	48041	6.99	6.64
OSHA Safety Orange	48042	6.99	6.64
White	48043	6.99	6.64
Black	48044	6.99	6.64
OSHA Safety Green	48045	6.99	6.64
Navy Gray	48046	6.99	6.64
Flat Black	48048	6.99	6.64



Rust-Oleum® Industrial Choice™ Multi-Purpose Spray Paint

- Great for everyday maintenance
- Fast drying

Industrial Choice is a great multi-purpose spray paint that dries to the touch in 12 minutes or less. It's specially formulated for mild to moderate industrial use indoors or outdoors. High solids content provides faster, broader coverage and resists chipping, fading and peeling. Sold individually in 12-oz net wt cans.

DESCRIPTION	STOCK #	EACH	QTY 12+
Gray Primer	43980	\$ 4.79	\$ 4.31
OSHA Safety Yellow	43981	4.79	4.31
Flat Black	43982	4.79	4.31
Glossy Black	43983	4.79	4.31
Flat White	43984	4.79	4.31
Glossy White	43985	4.79	4.31
Cherry Red	43986	4.79	4.31
OSHA Safety Orange	43987	4.79	4.31
OSHA Safety Red	43564	4.79	4.31
OSHA Safety Blue	43567	4.79	4.31
OSHA Safety Green	43569	4.79	4.31
Fluorescent Orange	43988	4.79	4.31
Fluorescent Red-Orange	43989	5.19	4.67
Dull Aluminum	43584	4.79	4.31
Machinery Gray	43599	4.79	4.31



Rust-Oleum® High-Performance LeakSeal™ Spray Coating

- Prevent moisture penetration, rust and corrosion
- Excellent adhesion to most surfaces
- Goes on evenly and dries to a semi-smooth surface

LeakSeal provides a flexible watertight seal that stops leaks quickly. Use it to fill holes, gaps and cracks on plastic, PVC, fiberglass, aluminum, galvanized metal, masonry, asphalt, concrete and more.

This easy-to-apply spray-on coating goes on evenly and dries to a semi-smooth surface that won't sag or drip, unlike other brands that can go on unevenly and dry to a gooey consistency. Once dry, you can paint over LeakSeal using a latex- or oil-based paint. Resists cracking and bubbling over time due to UV exposure.

DESCRIPTION	STOCK #	EACH	QTY 6+
LeakSeal, Black, Aerosol Can, 15 oz	43991	\$ 11.99	\$ 11.03



Rust-Oleum® Industrial Choice™ Cold Galvanizing Compound Spray

- Great for coating metals in harsh environments
- Provides maximum corrosion resistance

Coating contains 93% pure zinc in dry film for maximum corrosion resistance. Ideal for touch-ups on welds or galvanized air ducts. Also great for coating the metal frames on belt filter presses, electrical conduit and any galvanized metal in sludge process areas. Sold individually in 14-oz net wt cans.

DESCRIPTION	STOCK #	EACH
Cold Galvanizing Compound, 14 oz	42481	\$ 5.89

Color Selection Guide for Rust-Oleum® Paint Systems

Cherry Red	OSHA Safety Red	Silver Gray	Dull Aluminum	Navy Gray	Marlin Blue	Forest Green
Fire Hydrant Red	Red Primer	Gray Primer	Machinery Gray	National Blue	OSHA Safety Blue	OSHA Safety Green
Fluorescent Orange	Fluorescent Red Orange	Dunes Tan	Black	White	Vista Green	John Deere Green
OSHA Safety Orange	OSHA Safety Yellow					

Please note: Color reproductions may not be exact due to printing process. Color names may differ between systems. Custom colors available upon request; 12 gallon minimum order. Contact USABlueBook for more information.

* Available in aerosol only. ** Available in gallons only.

Paint & Coatings **MAINTENANCE**



Rust-Oleum® 5200 System Industrial Choice® Acrylic Enamel

- Apply to clean, rusted or galvanized metals
- Resists fading and chalking 2 to 3 times longer than oil-based enamels, especially in industrial environments
- Water-based formula for easy clean-up

The 5200 System is a water-based acrylic enamel that is superior to oil-based enamels in corrosion, chemical and weather resistance. This coating is ideal for maintenance on water towers, plant buildings, collector shacks, railings, piping, etc. Can be applied to damp surfaces.

This fast drying system allows a complete two-coat system to be applied in less than 3 hours. Applies easily by brush, roller or spray-thin with water only. Sold in one-gallon containers. One gallon covers from 150 to 260 square feet. Low VOC, low odor. **Cannot be sold in the South Coast Air Quality Management District.**

DESCRIPTION	STOCK #	EACH	QTY 4+
Marlin (Light Blue)	44014	\$ 48.95	\$ 44.06
Forest Green	44016	48.95	44.06
Fire Hydrant Red	43827	48.95	40.95
Dunes Tan	44020	48.95	44.06
Chestnut Brown	44022	48.95	44.06
Navy Gray	44024	48.95	44.06
Gloss Black	44026	48.95	44.06
OSHA Safety Blue (Med. Blue)	43830	48.95	40.95
OSHA Safety Yellow	43828	48.95	40.95
OSHA Safety Orange	43829	48.95	40.95
National Blue	44387	48.95	44.06
Vista Green	44388	48.95	44.06
John Deere Green	44389	48.95	44.06
OSHA Safety Green	43831	48.95	40.95
OSHA Safety Red	44391	48.95	44.06
Silver Gray	44392	48.95	44.06
White	43832	48.95	40.95
Gray Primer	44010	46.95	39.95
Red Primer	44012	46.95	39.95

X2

Rust-Oleum® High-Performance V7400 System DTM 340 VOC Alkyd Enamel Paint

- Protect indoor and outdoor surfaces from rust and corrosion
- Low VOC (less than 340 g/l)
- Excellent coverage in one coat



Protect your metal surfaces from rust and corrosion while also protecting the environment. This low-VOC rust-preventative coating is great for everyday use. Its long-lasting finish provides superior resistance to chipping, cracking and peeling. Not for use on galvanized steel. Sold in one-gallon containers.

COLOR	STOCK #	EACH	QTY 4+
Gray Primer	44299	\$ 48.95	\$ 44.06
Gloss Black	44301	52.95	47.66
OSHA Safety Yellow	44303	64.95	59.75
Gloss White	44305	52.95	47.66
Chestnut Brown	44309	52.95	47.66
Navy Gray	44311	52.95	47.66
OSHA Safety Orange	44313	64.95	59.75
OSHA Safety Red	44315	64.95	59.75



71681



71689

N95 Dust/Mist Respirators

- Meets 42 CFR 84 requirements
- Available with or without exhalation valve

Meets 42 CFR 84 requirements for protection against any solid or non-oil containing particle contaminant. Features strong, polymer-welded head straps which stand up to tough use. Smooth inner lining makes mask more comfortable and increases worker acceptance.

DESCRIPTION	STOCK #	BOX
N95 Respirator, Box of 20	71681	\$ 16.99
N95 Respirator With Exhalation Valve, Box of 12	71689	22.95



Fax 1-847-689-3030

Phone 1-800-548-1234

www.usabluebook.com

USABlueBook

943

FLOW METERING Water Meters & Accessories



NEW!

ZENNER
All that counts.

NO LEAD



NEW!

Zenner® Lead-Free Class II Turbine Meters

- Universal measuring element for easy in-place servicing
- Choose from direct read or remote read (includes battery-powered remote digital display)

Rugged PMTB series turbine meters provide virtually maintenance-free long-term service. They're designed for potable cold water applications with moderate to high flows and occasional low flows. These meters comply with all performance and material requirements of the AWWA Standard C701, Class II In-Line (High-Velocity) Type.

Install meter in horizontal pipelines with the register facing upwards. 2" meters have 2-bolt oval flanges; 3 to 8" have standard round flanges. Choose from direct read or remote read models. Remote read meters feature a battery-powered wall-mount remote reader with digital display.

Note: Remote read meters include 5 feet of connecting wire; longer cable sold separately. Strainers are highly recommended for installation upstream to protect the meter and improve accuracy. Strainers sold separately; see facing page.



Remote read models include battery-powered wall-mount remote reader

Accuracy:	98.5 to 101.5%
Max operating pressure:	160 psi
Max operating temp:	140°F
Case material:	bronze
Max wire length (remote read):	500 feet
Meter output (remote read):	ETR encoder output, ASCII format
Remote wall mount unit dimensions:	4.6"W x 4.3"H x 2"D

Flow Ranges for Zenner PMTB Series Meters

Size	Flow Range (gpm)		Flange Connection	Lay Length
	Min-Max	Max Continuous		
2"	2 to 400	200	2 Bolt, Oval	10"
3"	2 1/2 to 550	450	4 Bolt, Round	12"
4"	4 to 1250	1000	8 Bolt, Round	14"
6"	12 to 2500	2000	8 Bolt, Round	18"
8"	20 to 4500	3500	8 Bolt, Round	20"

Meters Reading in Gallons

SIZE	DIRECT READ		REMOTE READ	
	STOCK #	EACH	STOCK #	EACH
2" Oval	17729	\$ 614.95	17866	\$ 834.95
3" Round	17861	1,079.95	17867	1,259.95
4" Round	17862	1,479.95	17868	1,689.95
6" Round	17863	2,589.95	17869	2,809.95
8" Round	17864	4,219.95	17871	4,429.95

Meters Reading in Cubic Feet

SIZE	DIRECT READ		REMOTE READ	
	STOCK #	EACH	STOCK #	EACH
2" Oval	17873	\$ 614.95	17879	\$ 834.95
3" Round	17874	1,079.95	17881	1,259.95
4" Round	17875	1,479.95	17882	1,689.95
6" Round	17876	2,589.95	17883	2,809.95
8" Round	17877	4,219.95	17884	4,429.95

22-GA Meter Wire, 500' Roll

50452 99.95

Zenner® Lead-Free Compound Meters

- For services where flows extend from very high to very low
- Choose from direct read or remote read (includes battery-powered remote digital display)

These bronze compound meters are designed for installations where there are large variations in flow rates, such as schools, smaller motels, apartments and condos. They meet the performance required in AWWA standard C-702. Long-life design for both the turbine and multi-jet meters, coupled with a high-performance valve, provides a high level of reliability.

Choose from direct read or remote read models. Remote read meters feature a battery-powered wall-mount remote reader with digital display. All meters are for use with potable cold (up to 140°F) water flowing in one direction, and working pressures up to 160 psi.

Note: Remote read meters include 5 feet of connecting wire; order longer cable separately. Strainers are highly recommended for installation upstream to protect the meter and improve accuracy. Strainers sold separately; see facing page.



Remote read models include battery-powered wall-mount remote reader

Accuracy:	98.5 to 101.5%
Max operating pressure:	160 psi
Max operating temp:	140°F
Case material:	bronze
Max wire length (remote read):	500 feet
Meter output (remote read):	ETR encoder output, ASCII format
Remote wall mount unit dimensions:	4.6"W x 4.3"H x 2"D

Flow Ranges for Zenner PMCB Series Meters

Size	Flow Range (gpm)		Connection	Lay Length
	Min-Max	Max Continuous		
2"	1/4 to 400	200	2 Bolt, Oval	17"
3"	1/2 to 1000	700	4 Bolt, Round	17"
4"	3/4 to 1300	1000	8 Bolt, Round	20"

Meters Reading in Gallons

SIZE	DIRECT READ		REMOTE READ	
	STOCK #	EACH	STOCK #	EACH
2" Oval	17951	\$ 1,779.95	17954	\$ 2,079.95
3" Round	17952	2,359.95	17955	2,669.95
4" Round	17953	3,019.95	17956	3,319.95

Meters Reading in Cubic Feet

SIZE	DIRECT READ		REMOTE READ	
	STOCK #	EACH	STOCK #	EACH
2" Oval	17957	\$ 1,779.95	17631	\$ 2,079.95
3" Round	17958	2,359.95	17633	2,669.95
4" Round	17959	3,019.95	17639	3,319.95

22-GA Meter Wire, 500' Roll

50452 99.95

The AWWA M6 manual recommends 10 pipe diameters upstream and 5 pipe diameters downstream of straight pipe for optimal accuracy of all differential type flowmeters. It is recommended that a plate strainer be used to protect the turbine and help reduce the effects of turbulence.

operator notes

Water Meters & Accessories **FLOW METERING**

National Brands of Water Meters

USABlueBook can provide you with the right national brand of water meters for your application. We have partnered with HD Supply Waterworks to support the major water metering brands in the industry. Look below for the sizes and types of meters that you need. Please call USABlueBook for pricing and product availability.



NEW!

Nationally Recognized Brand of Turbine Water Meters

- Meets performance required in AWWA C-701 standard
- Choose from direct read meters in gallons or in cubic feet
- Lead-free for potable water applications

Turbine water meters are designed for use in potable cold water applications where moderate to high sustained flows are required. Due to their high capacities, turbine meters are popular choices for mainline flowmeters in well houses and for influent or effluent meters at the plant.

Order flange kits separately. Strainers are recommended for installation upstream to protect the meter and improve accuracy (order separately below).



DESCRIPTION	Meters Reading in Gallons		Meters Reading in Cubic Feet	
	STOCK #	EACH	STOCK #	EACH
1 1/2" Oval	73325	CALL	73332	CALL
2" Oval	73326	CALL	73333	CALL
3" Round	73327	CALL	73334	CALL
4" Round	73328	CALL	73335	CALL
6" Round	73329	CALL	73336	CALL
8" Round	73330	CALL	73337	CALL
10" Round	73331	CALL	73338	CALL

Accuracy: 98.5 to 101.5%
 Max operating pressure: min. 150 psi
 Max operating temp: min. 80°F
 Materials: compliant to AWWA C-701 standard

ZENNER
All that counts.

NEW!

Meter Strainers

- Meter collision insurance; cuts cost in meter maintenance and repair
- Protects turbines from damage caused by line debris
- Straightens water flow when turbine inlets are mounted near an elbow



A pebble the size of a raisin can destroy a turbine meter that costs hundreds of dollars. To protect your meters, we strongly recommend installing a strainer in front of all meters located in lines that may contain damaging particles. Strainers also feature straightening vanes that help eliminate water turbulence and maximize meter performance.

Installation is easy—simply attach meter strainers directly to the meter flange. The flanged strainer is made of three main components: the main case (bronze), top plate (bronze) and z-plate strainer (high-strength stainless steel). Maximum working pressure is 150 psi.

We also offer Y and basket strainers that reduce effects of water turbulence when located at least 6 to 8 pipe diameters from the meter inlet. Contact USABlueBook for more information.

SIZE	OVERALL LENGTH	FLANGE CONNECTION	STOCK #	EACH
2"	7"	2 Bolt, Oval	17885	\$ 314.95
3"	6"	4 Bolt, Round	17886	599.95
4"	7 1/2"	8 Bolt, Round	17887	784.95
6"	9"	8 Bolt, Round	17888	1,179.95
8"	10"	8 Bolt, Round	17889	1,379.95

NO LEAD

No-Lead Meter Flange Kits

- Includes two flanges, bolts and gaskets

Interior of flange is threaded so that it can be screwed onto the water line. May be used with S x MIP adapter if using PVC pipe.

METER SIZE	FLANGE SHAPE	# OF BOLTS	STOCK #	EACH
1 1/2"	Oval	2	73196	\$ 144.95
2"	Oval	2	73197	195.95
3"	Round	4	73198	334.95
4"	Round	8	73199	439.95
6"	Round	8	73200	784.95

NO LEAD

X 2

"Colleagues of mine run a small utility and I showed them how USABlueBook could supply most of their needs from field to lab."

Here's what customers are saying about **USABlueBook**

Steven Upton
Lead WW Operator
Heber Springs Water System
Heber Springs, AR

Fax 1-847-689-3030

Phone 1-800-548-1234

www.usabluebook.com

USABlueBook

345

VALVES Gate Valves & Accessories



Actuation available!

Diaphragm Valves

- Problem solver in water and wastewater service
- No valve exercising required
- Drip-tight diaphragm seal; no stem seals to leak

These diaphragm valves feature an operating mechanism that's totally isolated from the flow passage. You don't need to exercise the valve as it won't freeze up from non-use. Diaphragm sealing provides drip-tight closure for total isolation. A high flow coefficient ensures minimal flow restriction.

These valves perform equally well in clear water, abrasive liquid and slurry service. The neoprene diaphragm can be replaced without removing the valve from the line. Alternative body, lining and diaphragm materials are also available as special order; contact USABlueBook for more information.

Valve construction: epoxy-coated cast iron
Seals: neoprene
Applications: throttling fluids and slurries
Connections: flanged

PIPE SIZE (FLG)	FACE TO FACE	MAX PSI	WT (LBS)	STOCK #	EACH
2"	7"	175	25	15335	\$ 494.95
2 1/2"	7 1/2"	175	32	15340	614.95
3"	8"	150	45	15336	614.95
4"	9"	150	70	15337	739.95
6"	10 1/2"	125	145	15338	1,239.95
8"	11 1/2"	100	185	15339	1,489.95

Flange Packs

Full face 1/8" red rubber gasket with zinc plated or SS bolts sized for standard 125/150 lb flanges.



PIPE SIZE	# OF BOLTS	ZINC PLATED		STAINLESS STEEL	
		STOCK #	EACH	STOCK #	EACH
2"	4	16658	\$ 7.99	16656	\$ 38.95
2 1/2"	4	16659	8.49	16673	45.95
3"	4	16660	9.29	16675	45.95
4"	8	16661	16.49	16677	73.95
6"	8	16662	23.95	16679	118.95
8"	8	16663	26.95	16681	129.95
10"	12	16687	54.95	16683	235.95
12"	12	16689	55.95	16685	262.95

See page 1066 for Mechanical Joint Kits.

1608 USABlueBook

Cast-Iron Gate Valves

- High quality at competitive prices
- Resilient wedge, NRS

These high quality valves feature an epoxy-coated cast-iron body and bonnet with a SS stem. The wedge consists of an iron base with a vulcanized, encapsulated resilient surface for positive seating and resistance to high differential pressure.

They are best suited for fully open or closed service in water and sewage disposal applications. 200 Series valves are offered in three configurations for above and below ground installations. Please call for quantity discounts. All valves 4" and larger ship motor freight.



Valve construction: epoxy-coated cast iron
Max psi rating: 200 psi
Temperature rating: 140°F
Applications: on/off service
Connections: flanged or MJ
Certification: AWWA C509

Hand Wheel[®], FLG x FLG

SIZE (FLG x FLG)	OL	# OF BOLTS	WT (LBS)	STOCK #	EACH
2"	7.0"	4	30	15236	\$ 169.95
3"	8.0"	4	51	15238	239.95
4"	9.0"	8	75	15239	269.95
6"	10.5"	8	130	15241	389.95
8"	11.5"	8	214	15242	594.95
10"	13.0"	12	330	15243	929.95
12"	14.0"	12	510	15244	1,319.95



15236

* Available with square nut at no extra charge.

2" Square Nut, FLG x MJ

SIZE (FLG x MJ)	OL	# OF BOLTS	WT (LBS)	STOCK #	EACH
3"	8.0"	4	51	15265	\$ 269.95
4"	9.0"	8	75	15266	299.95
6"	10.5"	8	130	15267	434.95
8"	11.5"	8	214	15268	644.95
10"	13"	12	330	15269	1,009.95
12"	14"	12	510	15270	1,459.95



15265

2" Square Nut, MJ x MJ

SIZE (MJ x MJ)	OL	# OF BOLTS	WT (LBS)	STOCK #	EACH
3"	8.0"	4	51	15259	\$ 250.95
4"	9.0"	8	75	15260	295.95
6"	10.5"	8	130	15261	429.95
8"	11.5"	8	214	15262	639.95
10"	13.0"	12	330	15263	974.95
12"	14.0"	12	510	15264	1,339.95



15259

Replacement 2" Square Operating Nuts

VALVE SIZE	STOCK #	EACH
2 to 4"	78745	\$ 36.95
6 to 8"	78747	36.95
10"	78748	36.95
12"	78749	36.95

Perfect for slurry applications.

VALVES Check



Lever & Weight

Lever & Spring



Includes both lever & weight and lever & spring components



AWWA Swing Check Valves

- Complies fully with AWWA C508-93
- Mounts vertically or horizontally
- Cast-iron adjustable gland on lever shaft allows you to reverse orientation in the field

Ductile-iron body with 304 SS hinge pins, bronze seat and bronze disc. The weight on the weighted lever models can be adjusted to alter closing characteristics, and the lever can be adjusted to suit either vertical upward or horizontal mounting positions.

Valve construction: ductile iron
 Seat & disk: bronze
 Max psi rating: 175 psi
 Connections: flanged (class 125 flanges)
 Certifications: AWWA C508-93

SIZE (FLG)	LENGTH	# OF BOLTS	WT (LBS)	LEVER & WEIGHT		LEVER & SPRING	
				STOCK #	EACH	STOCK #	EACH
3"	9.5"	4	50	22392	\$ 587.95	29349	\$ 577.95
4"	11.5"	8	90	22393	829.95	29350	803.95
6"	14"	8	166	22394	1,133.95	29351	1,154.95
8"	19.5"	8	300	22395	1,690.95	29352	1,721.95
10"	24.5"	12	490	22396	2,425.95	29353	2,425.95
12"	27.5"	12	635	22397	4,021.95	29354	4,021.95
14"	31"	12	1060	22398	5,507.95	29355	5,620.95
16"	36"	16	1500	22399	6,930.95	29356	6,930.95

AWWA Lever & Weight Check Valves

- Both lever & weight and lever & spring components
- Meets AWWA C508 standards
- Mount horizontally or vertically

These versatile check valves are a great choice for replacements in most water and sewer applications. They close quickly to avoid water hammer in pressurized water systems. Each valve includes both lever & weight and lever & spring kits, so you'll always have the right parts on hand, no matter what your needs are.

Valves install either horizontally or vertically, and conform to AWWA lay lengths. Fusion-bonded epoxy coating protects the cast-iron housing for long life. Larger valves up to 16" are available. Contact USABlueBook for more information.

Valve construction: cast iron
 Seat & disk: bronze seat, ductile iron disc, Buna-N seat ring
 Max psi rating: 200 psi
 Connections: flanged (Class 125 flanges)
 Certifications: AWWA C508
 Coating: AWWA C550 fusion-bonded epoxy coating inside and outside

SIZE (FLG)	LENGTH	# OF BOLTS	WT (LBS)	STOCK #	EACH
3"	9.5"	4	58	52560	\$ 561.95
4"	11.5"	8	84	52561	727.95
6"	14"	8	157	52562	987.95
8"	19.5"	8	231	56498	1,609.95

Flomatic™ Cast-Iron AWWA Swing Check Valves

- Conform to AWWA C508 specs
- Fusion epoxy-coated for extra protection
- Air-cushioned models minimize slamming and water hammer

Flomatic cast-iron check valves have a non-clog, full-port design and are completely repairable in line. Valves feature adjustable closures available in three styles: lever & weight, lever & spring, and lever & spring with air-cushioned design. The air-cushioning feature almost eliminates slamming and water hammer issues.

These valves are designed for horizontal positioning. Available options include vertical positioning, rubber seating, stainless steel seat rings and vacuum relief systems. Contact USABlueBook for more information. Valves ship motor freight.



Air-cushioned

Valve construction: cast iron
 Seat & disk: bronze (SS option available)
 Max psi rating: 200 psi
 Connections: ANSI 125 flanged
 Certifications: AWWA C508
 Coating: fusion epoxy-coated

SIZE (FLG)	LENGTH	# OF BOLTS	WT (LBS)	LEVER & WEIGHT		LEVER & SPRING		AIR-CUSHIONED	
				STOCK #	EACH	STOCK #	EACH	STOCK #	EACH
4"	11 1/2"	8	119	34896	\$ 1,139.95	34889	\$ 1,129.95	34903	\$ 2,009.95
6"	14"	8	205	34897	1,569.95	34890	1,569.95	34904	2,349.95
8"	19 1/2"	8	359	34898	2,299.95	34891	2,249.95	34905	2,969.95



Lever & Weight



Lever & Spring

1616 **USABlueBook**

Check out these valves!



More saving.
More doing.

Your Store: **Holiday #288**
Use My Current Location or find store

Tool & Truck Rental | Installation Services and Repair | Gift Cards | Help

BEHR Premium Plus Ultra | Model # 985005 | Internet # 100570468 | Store SKU # 288178

CHAT WITH AN EXPERT

5-gal. Ultra Pure White Satin Enamel Exterior Paint

★★★★☆ (354) Customer Images (8) Write a Review Questions & Answers (24)

\$175.00 /each

5.



ACCESSORIES (7)

YOUR CURRENT PRODUCT				1 of 3
\$175.00 /each	\$8.55 /each	\$2.94 /each	\$17.98 /box	
BEHR Premium Plus Ultra 5-gal. Ultra Pure... (354)	The Home Depot 5-gal. Homer Bucket (3-Pack)	BEHR Premium Plus Ultra 8 oz. #7050 Ultra... (3)	Kimberly-Clark Rags in a Box 300-ct (18)	
Item Selected	Select This Item	Select This Item	Select This Item	

1 Item(s) Selected

ADD ITEMS TO CART

PRODUCT OVERVIEW Model # 985005 Internet # 100570468 Store SKU # 288178

BEHR Premium Plus Ultra Satin Enamel Exterior Paint and Primer in One will change the way you paint and save you time. This exciting product, featuring NANOGUARD technology, provides an extra-protective shell that guard against damage from sunlight, moisture, stains and dirt. It's the perfect choice for all weather climates, even for application in temperature as low as 35 degrees F (2 degrees C). Ideal for painting properly prepared rusted metals, tannic woods and drastic color changes. California residents: see Proposition 65 information.

- Suitable for application on wood, vinyl, stucco, aluminum, metals, steel, doors, windows, trim, shutters, garage doors, outdoor furniture, railing and wrought iron
- 100% acrylic base provides exceptional adhesion and durability
- Extra-protective shell guards against damage caused by UV rays and severe weather conditions for a long-lasting freshly painted look with minimal maintenance
- Enhanced mildew resistant finish
- Covers up to 2000 sq. ft. depending on surface porosity

Pope's Water Systems, Inc.

Well Drilling

17610 US Highway 41 North
Lutz, FL 33549-4572
Phone 813-949-7413
Fax 813-948-8731

Proposal

Date	Proposal #
9/23/2014	8738

Florida Service Utilities
1902 Barton Park Rd. Ste 201
Auburndale, Fl. 33823

Project Location	Holiday Gardens Well #1 <i>+ CRU #4</i>
Description	10 HP Pump Replacement W/ Subm
Owner/Builder	Fl. Service Utilities
Customer Ph	
Cell Phone	Judy Cell -
Work Phone	Office - 727-937-6275
Terms	\$ 3000 Deposit

Item	Qty.	Description	Unit	Total
SPM-0000	1	<p>175 GPM @ 150TDH</p> <p>1 - 10 HP Franklin Motor 230 volts 3 pH 1- 10 HP Grundfos stainless steel 230S100-3 submersible pump 1- 10HP Magnetoc starter 230V 3pH 45' -10 x 3 w/grnd Submersible Wire 42' 3"- Galvanized Drop Pipe 1 -3" x 12" Galv. nipple 1- Splice Kit 1- 8" x 3" Well Seal 1 - 3/4" Sample tap 1 -Well vent</p> <p>Electrical box on wall with 3 polaris wire connection , (3) 4" flange gaskets , (1) 3" Galv. tee, (1) 3 x 3/4" Galv. bushings, (1) 4" Flanged CI pipe, (1) 4" x 3 companion flange.</p>	5,754.73	5,754.731
SF-100		Labor to pull 10 HP Turbine pump	1,200.00	1,200.00
SL-800		Labor to install submersible pump & accessories. Pump off well up to 1 hr.	1,500.00	1,500.00

Subtotal	\$8,454.73
Sales Tax (7.0%)	\$402.83
Total	\$8,857.56

ACCEPTANCE OF PROPOSAL: The above prices, specifications and conditions are hereby accepted. You are authorized to perform the work as specified. I understand that this proposal is an estimate for the work to be performed and due to the nature of the work, the well depth, quantity and type of casing, depth of drop pipe & wire, and the quantity of bags of cement may be greater or less than the estimate. I understand that Pope's Water Systems, Inc. is not responsible for damages to sidewalks, driveways, or lawns and landscapes. Warranty work will only be done during regular business hours. Balance is due upon completion.
PRICE QUOTED VALID FOR 30 DAYS. NO GUARANTEE OF WATER QUALITY OR AGAINST MINERALS AND/OR CHLORIDES IN WATER.

Proposed By: 

Accepted Signature & Date _____

Print Name _____

H6u

PIPE PVC Pipe Fittings & Accessories

Sch 80 Fittings

- Choose from PVC and CPVC fittings
- Slip, threaded and stainless steel reinforced

Use Sch 80 fittings to maximize the strength of your chemical feed lines and especially where you are using threaded connections, since threading PVC pipe greatly reduces working pressure. Sch 80 fittings are compatible with Sch 40 pipe. Socket indicates a female socket connection into which a pipe

or spigot fitting is inserted for solvent welding. Spigot indicates a male spigot connection, meaning that the male end can be inserted into a socket fitting. Threaded refers to NPT, M or F.



A 45° Elbows

PIPE SIZE	PACK	PVC FITTINGS			CPVC FITTINGS		
		STOCK #	PACK	QUANTITY	STOCK #	PACK	QUANTITY
SOCKET							
1/2"	4	30850	\$ 16.56	10+	19122	\$ 31.65	10+ \$ 17.41
3/8"	4	30851	16.56	10+	19123	31.65	10+ 17.41
1/4"	4	30852	8.85	10+	19124	10.44	10+ 5.74
3/4"	4	30853	13.32	10+	19125	14.91	10+ 8.20
1"	4	30854	19.89	10+	19126	23.58	10+ 12.97
1 1/2"	1	45394	6.36	15+	19127	11.55	15+ 6.35
2"	1	45393	7.50	15+	19128	11.85	15+ 6.52
2 1/2"	1	45391	9.69	10+	19129	13.29	10+ 7.31
3"	1	24648	20.19	10+	19130	27.06	10+ 14.88
3 1/2"	1	24649	24.54	5+	19131	34.68	5+ 19.07
4"	1	45517	44.04	5+	—	—	—
THREADED (F)							
1/2"	4	30855	\$ 18.72	10+	19132	\$ 29.79	10+ \$ 16.38
3/8"	4	30856	18.72	10+	19133	29.79	10+ 16.38
1/4"	4	30857	17.13	10+	19134	28.23	10+ 15.53
3/4"	4	30858	18.39	10+	19135	30.96	10+ 17.03
1"	4	30859	23.04	10+	19136	34.11	10+ 18.76
1 1/2"	1	45472	8.79	15+	19137	14.58	15+ 8.02
2"	1	45473	11.01	15+	19138	14.58	15+ 8.02
2 1/2"	1	45471	16.26	10+	19139	19.17	10+ 10.54
3"	1	24650	58.41	10+	19140	36.27	10+ 19.95
3 1/2"	1	24651	51.48	5+	19141	52.17	5+ 28.69
4"	1	45515	73.80	5+	—	—	—

B 90° Elbows

PIPE SIZE	PACK	PVC FITTINGS			CPVC FITTINGS		
		STOCK #	PACK	QUANTITY	STOCK #	PACK	QUANTITY
SOCKET							
1/2"	4	30840	\$ 4.83	10+	19102	\$ 21.39	10+ \$ 11.76
3/8"	4	30841	4.83	10+	19103	21.39	10+ 11.76
1/4"	4	30842	4.83	10+	19104	8.58	10+ 4.72
3/4"	4	30843	6.09	10+	19105	10.86	10+ 5.97
1"	4	30844	9.69	10+	19106	17.13	10+ 9.42
1 1/2"	1	45386	3.27	15+	19107	9.21	15+ 5.07
2"	1	45381	3.48	15+	19108	10.26	15+ 5.64
2 1/2"	1	45383	4.20	10+	19109	12.36	10+ 6.80
3"	1	24638	9.66	10+	19110	28.29	10+ 15.56
3 1/2"	1	24639	10.83	5+	19111	32.01	5+ 17.61
4"	1	30735	16.38	5+	—	—	—
THREADED (F)							
1/2"	4	30845	\$ 11.52	10+	19112	\$ 22.47	10+ \$ 12.36
3/8"	4	30846	11.52	10+	19113	22.47	10+ 12.36
1/4"	4	30847	10.77	10+	19114	13.17	10+ 7.24
3/4"	4	30848	13.35	10+	19115	19.53	10+ 10.74
1"	4	30849	16.80	10+	19116	27.39	10+ 15.06
1 1/2"	1	45484	4.59	15+	19117	13.17	15+ 7.24
2"	1	45463	6.42	15+	19118	14.13	15+ 7.77
2 1/2"	1	45461	7.23	10+	19119	18.90	10+ 10.40
3"	1	24640	27.72	10+	19120	58.38	10+ 32.11
3 1/2"	1	24641	44.55	5+	19121	62.61	5+ 34.44
4"	1	30742	78.24	5+	—	—	—

need 9 total

C Caps

PIPE SIZE	PACK	PVC FITTINGS			CPVC FITTINGS		
		STOCK #	PACK	QUANTITY	STOCK #	PACK	QUANTITY
SOCKET							
1/2"	4	30915	\$ 10.71	10+	19259	\$ 15.33	10+ \$ 8.43
3/8"	4	30916	10.71	10+	19260	15.33	10+ 8.43
1/4"	4	30917	8.34	10+	19261	13.92	10+ 7.66
3/4"	4	30918	8.76	10+	19262	19.68	10+ 10.82
1"	4	30919	15.95	10+	19263	34.65	10+ 19.06
1 1/2"	1	45580	4.68	15+	19264	9.54	15+ 5.25
2"	1	45579	4.68	15+	19265	9.54	15+ 5.25
2 1/2"	1	45577	9.09	10+	19266	10.05	10+ 5.53
3"	1	24662	18.45	10+	19267	33.51	10+ 18.43
3 1/2"	1	24663	21.57	5+	19268	36.72	5+ 20.20
4"	1	45531	36.24	5+	19269	37.35	5+ 20.54
THREADED (F)							
1/2"	4	30878	\$ 10.32	10+	19270	\$ 17.91	10+ \$ 9.85
3/8"	4	30879	10.32	10+	19271	17.91	10+ 9.85
1/4"	4	30839	10.32	10+	19272	15.42	10+ 8.48
3/4"	4	30837	11.52	10+	19273	25.32	10+ 13.93
1"	4	30836	14.52	10+	19274	35.37	10+ 19.45
1 1/2"	1	45604	4.38	15+	19275	15.75	15+ 8.66
2"	1	45603	4.95	15+	19276	16.14	15+ 8.88
2 1/2"	1	45601	9.60	10+	19277	23.19	10+ 12.75
3"	1	24664	19.11	10+	19278	53.49	10+ 29.42
3 1/2"	1	24665	22.44	5+	19279	70.11	5+ 38.56
4"	1	45533	39.39	5+	—	—	—

D Adapters

PIPE SIZE	PACK	PVC FITTINGS			CPVC FITTINGS		
		STOCK #	PACK	QUANTITY	STOCK #	PACK	QUANTITY
SOCKET x THREADED (F)							
1/2"	4	30880	\$ 14.16	10+	19428	\$ 28.80	10+ \$ 15.84
3/8"	4	30881	14.16	10+	19429	28.80	10+ 15.84
1/4"	4	30882	7.98	10+	19430	14.43	10+ 7.94
3/4"	4	30883	11.70	10+	19431	15.18	10+ 8.35
1"	4	30884	17.16	10+	19432	34.83	10+ 19.16
1 1/2"	1	45410	6.96	15+	19433	8.97	15+ 4.93
2"	1	45412	8.49	15+	19434	10.44	15+ 5.74
2 1/2"	1	45414	14.70	10+	19435	17.85	10+ 9.82
3"	1	24668	23.16	10+	19436	34.17	10+ 18.79
3 1/2"	1	24669	26.04	5+	19437	69.87	5+ 38.43
4"	1	45527	44.64	5+	—	—	—
SOCKET x THREADED (M)							
1/2"	4	30885	\$ 9.87	10+	19322	\$ 11.58	10+ \$ 6.37
3/8"	4	30886	10.86	10+	19323	14.07	10+ 7.74
1"	4	30887	18.63	10+	19324	23.55	10+ 12.95
1 1/2"	1	45488	5.49	15+	19325	8.70	15+ 4.79
2"	1	45490	7.83	15+	19326	11.70	15+ 6.44
2 1/2"	1	45492	11.25	10+	19327	15.81	10+ 8.70
3"	1	24670	12.81	10+	19328	42.90	10+ 23.60
3 1/2"	1	24671	14.22	5+	19329	57.57	5+ 31.66
4"	1	45529	25.14	5+	—	—	—

Get the Best Value with Box Quantities!

1048

USA BlueBook

In-house factory-authorized repairs and services—see page 183.

PVC Pipe Fittings & Accessories **PIPE**



E Viton® Union Seals

PIPE SIZE	PVC FITTINGS			CPVC FITTINGS		
	STOCK #	PACK	QUANTITY	STOCK #	PACK	QUANTITY
SOCKET x SOCKET						
1/4"	76938	\$ 8.50	20+	\$ 4.68	19291	\$ 14.16 20+ \$ 7.79
3/8"	76937	8.50	20+	4.68	19292	14.16 20+ 7.79
1/2"	45396	4.26	20+	2.34	19293	9.45 20+ 5.20
3/4"	45398	5.40	20+	2.97	19294	9.87 20+ 5.43
1"	45400	6.18	15+	3.40	19295	11.82 15+ 6.50
1 1/4"	45402	12.24	15+	6.73	19296	23.91 15+ 13.15
1 1/2"	45401	13.83	15+	7.61	19297	24.36 15+ 13.40
2"	45399	18.69	10+	10.28	19298	40.26 10+ 22.14
2 1/2"	24658	29.91	10+	16.45	19299	65.97 10+ 36.28
3"	24659	34.74	5+	19.11	19300	83.43 5+ 45.89
4"	45535	48.33	5+	26.58	—	—
THREADED (F)						
1/4"	76935	\$ 8.50	20+	\$ 4.68	19301	\$ 15.90 20+ \$ 8.75
3/8"	76936	8.50	20+	4.68	19302	15.90 20+ 8.75
1/2"	45474	4.95	20+	2.72	19303	10.11 20+ 5.56
3/4"	45476	6.90	20+	3.80	19304	17.82 20+ 9.80
1"	45478	9.15	15+	5.03	19305	24.54 15+ 13.50
1 1/4"	45480	17.43	15+	9.59	19306	46.74 15+ 25.71
1 1/2"	45479	21.57	15+	11.86	19307	46.74 15+ 25.71
2"	45477	33.09	10+	18.20	19308	52.80 10+ 29.04
2 1/2"	24660	102.09	10+	56.15	19309	85.02 10+ 46.76
3"	24661	83.73	5+	46.05	19310	161.16 5+ 88.64

F SS-Reinforced Adapters

PIPE SIZE	PVC FITTINGS			CPVC FITTINGS			
	PACK	STOCK #	PACK	QUANTITY	STOCK #	PACK	QUANTITY
SPIGOT x THREADED (F)							
1/4"	4	30883	\$ 5.91	10+	\$ 3.25	19330	\$ 8.49 10+ \$ 4.67
3/8"	4	30894	6.90	10+	3.80	19331	8.94 10+ 4.92
1"	4	30895	10.53	10+	5.79	19332	19.80 10+ 10.89
1 1/2"	1	24719	4.20	15+	2.31	19333	5.19 15+ 2.85
1 1/4"	1	24720	5.01	15+	2.76	19334	6.00 15+ 3.30
2"	1	24721	8.22	10+	4.52	19335	10.77 10+ 5.92
3"	1	24722	15.03	5+	8.27	19336	38.91 5+ 21.40
4"	1	45513	25.38	5+	13.96	19337	65.22 5+ 35.87
SOCKET x THREADED (M)							
1/4"	4	30888	7.95	10+	4.37	19311	18.21 10+ 10.02
3/8"	4	30889	7.95	10+	4.37	19312	18.21 10+ 10.02
1/2"	4	30890	4.56	10+	2.51	19313	7.98 10+ 4.39
3/4"	4	30891	6.48	10+	3.56	19314	8.61 10+ 4.74
1"	4	30892	9.57	10+	5.26	19315	19.29 10+ 10.61
1 1/4"	1	24728	3.87	15+	2.13	19316	5.01 15+ 2.76
1 1/2"	1	24729	4.74	15+	2.61	19317	5.79 15+ 3.18
2"	1	24730	8.13	10+	4.47	19318	26.67 10+ 14.67
2 1/2"	1	24731	12.81	10+	7.05	19319	18.81 10+ 10.35
3"	1	24732	14.40	5+	7.92	19320	38.43 5+ 21.14
4"	1	45419	24.63	5+	13.55	19321	63.87 5+ 35.13

G Plugs

PIPE SIZE	PVC FITTINGS			CPVC FITTINGS			
	PACK	STOCK #	PACK	QUANTITY	STOCK #	PACK	QUANTITY
THREADED (M)							
1/4"	4	30873	\$ 8.97	10+	\$ 4.93	19280	\$ 14.46 10+ \$ 7.95
3/8"	4	30874	8.97	10+	4.93	19281	14.46 10+ 7.95
1/2"	4	30875	8.01	10+	4.41	19282	12.60 10+ 6.93
3/4"	4	30876	8.34	10+	4.59	19283	15.87 10+ 8.73
1"	4	30877	10.20	10+	5.61	19284	25.98 10+ 14.29
1 1/4"	1	24627	3.78	15+	2.08	19285	9.84 15+ 5.41
1 1/2"	1	24628	4.56	15+	2.51	19286	8.19 15+ 4.50
2"	1	24629	4.68	15+	2.57	19287	11.07 15+ 6.09
2 1/2"	1	24630	12.81	10+	7.05	19288	18.75 10+ 10.31
3"	1	24631	14.94	5+	8.22	19289	20.07 5+ 11.04
4"	1	30838	28.89	5+	15.89	19290	35.46 5+ 19.50

H Cross

PIPE SIZE	PVC FITTINGS			CPVC FITTINGS		
	STOCK #	PACK	QUANTITY	STOCK #	PACK	QUANTITY
SOCKET						
1"	24707	\$ 19.47	15+	\$ 10.71	19142	\$ 24.18 15+ \$ 13.30
1 1/4"	24708	23.40	15+	12.87	19143	25.92 15+ 14.26
1 1/2"	24709	25.20	15+	13.86	19144	28.17 15+ 15.49
2"	24710	31.17	10+	17.14	19145	36.48 10+ 20.06
2 1/2"	24711	42.51	10+	23.38	19146	48.66 10+ 26.76
3"	24712	52.95	5+	29.12	19147	61.89 5+ 34.04
4"	24713	92.01	5+	50.61	19148	110.43 5+ 60.74

I Tees

PIPE SIZE	PVC FITTINGS			CPVC FITTINGS			
	PACK	STOCK #	PACK	QUANTITY	STOCK #	PACK	QUANTITY
SOCKET							
1/4"	4	30896	\$ 13.08	10+	\$ 7.19	19084	\$ 19.68 10+ \$ 10.82
3/8"	4	30897	13.08	10+	7.19	—	—
1/2"	4	30898	13.08	10+	7.19	19085	19.68 10+ 10.82
3/4"	4	30899	13.68	10+	7.52	19086	20.04 10+ 11.02
1"	4	30900	17.10	10+	9.41	19087	24.54 10+ 13.50
1 1/4"	1	45564	11.64	15+	6.40	19088	12.90 15+ 7.10
1 1/2"	1	45563	11.64	15+	6.40	19089	14.76 15+ 8.12
2"	1	45561	14.52	10+	10.16	19090	16.41 10+ 9.03
2 1/2"	1	24642	15.84	10+	8.71	19091	41.58 10+ 22.87
3"	1	24643	19.74	5+	10.86	19092	41.58 5+ 22.87
4"	1	45519	22.86	5+	10.57	—	—
THREADED (F)							
1/4"	4	30901	\$ 15.06	10+	\$ 8.28	19093	\$ 43.38 10+ \$ 23.86
3/8"	4	30902	15.06	10+	8.28	—	—
1/2"	4	30903	15.06	10+	8.28	19094	43.38 10+ 23.86
3/4"	4	30904	16.74	10+	9.21	19095	62.31 10+ 34.27
1"	4	30905	36.60	10+	20.13	19096	67.17 10+ 36.94
1 1/4"	1	45588	9.75	15+	5.36	19097	16.95 15+ 9.32
1 1/2"	1	45587	11.79	15+	6.46	19098	17.79 15+ 9.78
2"	1	45585	12.66	10+	8.86	19099	19.74 10+ 10.86
2 1/2"	1	24646	45.75	10+	25.16	19100	96.51 10+ 53.08
3"	1	24647	47.79	5+	26.28	19101	111.93 5+ 61.56
4"	1	45521	77.55	5+	42.65	—	—

J Socket Flanges Class 150

PIPE SIZE	# OF BOLTS	PVC FITTINGS			CPVC FITTINGS		
		STOCK #	PACK	QUANTITY	STOCK #	PACK	QUANTITY
1 1/2"	4	24634	\$ 7.89	10+	\$ 4.34	19338	\$ 14.16 10+ \$ 7.79
2"	4	45450	10.47	10+	5.76	19339	17.13 10+ 9.42
2 1/2"	4	24633	16.14	10+	8.88	19340	35.37 10+ 19.45
3"	4	45452	17.82	5+	9.80	19341	37.02 5+ 20.36
4"	8	45454	22.50	5+	12.38	19342	49.92 5+ 27.46
6"	8	45456	35.25	5+	19.39	19343	84.90 5+ 46.70
8"	8	24635	57.27	5+	31.50	19344	254.94 5+ 140.22

need 12



Fax 1-847-689-3030

Phone 1-800-548-1234

www.usabluebook.com

USABlueBook

1049

HGU

Mercoid® Bourdon Tube Pressure Switches

- More accurate and repeatable than other pressure switches
- Mercury-free models available

These bourdon tube pressure switches combine high sensitivity and repeatability with adjustable, visible set points via two external thumb wheels. The accuracy and narrow dead bands make these switches suitable for many types of precise pressure control, including level control applications.

Choose from standard or weather-resistant enclosures with hermetically sealed mercury bulb contacts, or the non-mercury, high-current snap-action contacts. Pressure switches include SPDT contacts with an adjustable dead band. The minimum dead band may be set to anywhere within the range.

Note: A pressure snubber or pulsation damper is recommended.



Standard Model



Weatherproof Model

See page 860 for complete specifications

RANGE (PSIG)	MINIMUM DEADBAND	STANDARD HOUSING STOCK #	EACH	WEATHERPROOF HOUSING STOCK #	EACH
MERCURY-FREE SNAP-ACTION SWITCH MODELS					
2 to 60	6	62430	\$ 280.95	62435	\$ 399.95
5 to 100	9	62431	280.95	62436	399.95
5 to 150	16	62432	280.95	62437	399.95
10 to 200	16	62433	304.95	62438	414.95
MERCURY BULB SWITCH MODELS*					
2 to 60	3	62394	\$ 290.95	62397	\$ 419.95
5 to 100	3.75	62395	290.95	62398	419.95
5 to 150	6	62396	290.95	62399	419.95
10 to 200	8	62385	324.95	62388	444.95
10 to 300	12	22031	324.95	23032	444.95

* Note: these items may be restricted from sale in certain states. Please check with your local governing body to ensure compliance with all laws and regulations.

Up to 6' Long!

Sight Gauges

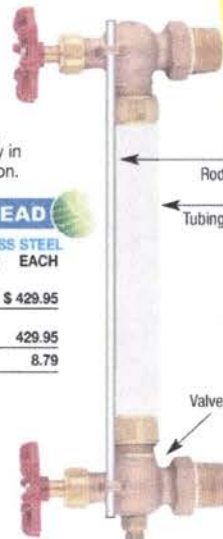
Valves are rough bronze or stainless steel construction with drain valve. Sold in sets of 2. Gauge tube protection rods are sold separately in 36" lengths that can be cut to fit your installation.

Valves and Rods

DESCRIPTION	BRONZE		STAINLESS STEEL	
	STOCK #	EACH	STOCK #	EACH
For 1/2" NPT(M) x 1/2" OD Tube, Set of 2	61890	\$ 69.95	89254	\$ 429.95
For 3/4" NPT(M) x 1/2" OD Tube, Set of 2	61891	108.95	89255	429.95
Guard Rod 36"	61892	8.59	88382	8.79

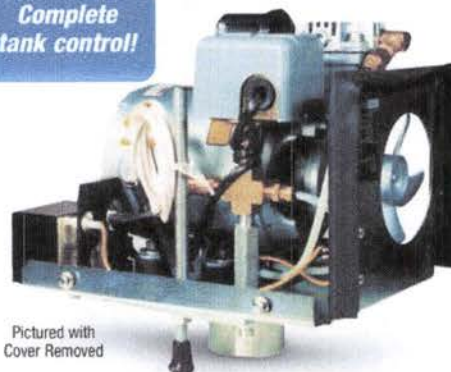
Tubing, (Sold in 6' Lengths)

DESCRIPTION	STOCK #	EACH
Acrylic, 1/2" OD x 1/8" Wall x 6'	61884	\$ 25.95
Acrylic, 3/4" OD x 1/8" Wall x 6'	61886	27.95
Spare Tube Gasket, 1/2"	61885	1.89
Spare Tube Gasket, 3/4"	61887	2.49



Hydro-Pneumatic Tanks & Accessories TANKS

Complete tank control!



Pictured with Cover Removed

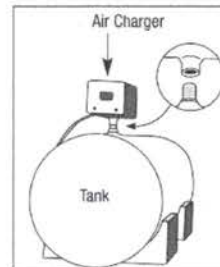
Hydro-Pneumatic Tank Air Charging Systems

- For tanks up to 15,000 gallons

Complete self-contained air control package includes an oil-less compressor, encapsulated liquid level switch and adjustable pressure switch. Installs in a 2" pipe nipple. Protected by weatherproof cover. Compressor is rated for 4,000 working hours.

Easy installation! Just attach the system to the top of the tank and plug it in. Set it to shut off 5 psi before water pump. It will come on when pressure drops the equivalent of the differential psi below your maximum setting. 120/230V motor is standard, 3.4/2 amps.

Note: Alternate voltages are available. Contact USABlueBook for more information.



MODEL	PSI RANGE	DIFFERENTIAL PSI	STOCK #	EACH
Model 610	15,000 gallons	80 psi	33860	\$ 1,499.95
Model 610 HP	15,000 gallons	110 psi	33861	1,499.95



Hi, I'm Angele A.
 "Log on to
www.usabluebook.com
 to place your order 24 hours
 a day, 7 days a week."

Fax 1-847-689-3030

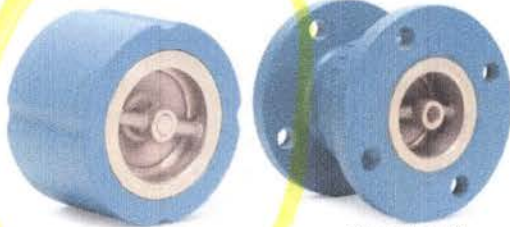
Phone 1-800-548-1234

www.usabluebook.com

USABlueBook

1459

VAL-MATIC



Wafer Style 56230

Globe Style 56238

Val-Matic Silent Check Valves

- Rugged cast-iron body—choose from bronze or stainless steel trim
- Functions equally well in all positions
- Resilient seating provides a drip-tight seal



These cast-iron check valves are engineered for silent operation and low head loss. Their short, linear strokes and spring-return action combine to close the valve prior to flow reversal, which eliminates the water hammer and damaging shock normally associated with valve shut off. Their teardrop-shaped full-port design prevents dangerous pressure drops in your line, and their resilient seating provides a drip-tight seal. Choose from wafer or globe style valves with either bronze or SS trim.

Valve construction:	cast iron
Seat:	SS or bronze
Max psi rating:	
Wafer style:	400 psi (8" + 200 psi)
Globe style:	200 psi
Threaded:	250 psi
Connections:	flanged, wafer or threaded



SIZE	FACE TO FACE	# OF BOLTS	BRONZE TRIM		SS TRIM	
			STOCK #	EACH	STOCK #	EACH
WAFAER STYLE						
2"	2 1/2"	—	56230	\$ 206.95	13837	\$ 293.95
2 1/2"	2 1/2"	—	56231	231.95	—	—
3"	3 1/2"	—	56232	239.95	13838	414.95
4"	4"	—	56233	319.95	13839	564.95
6"	5 1/2"	—	56235	574.95	13840	894.95
8"	6 1/2"	—	56236	1,029.95	13841	1,559.95
10"	8 1/2"	—	56237	1,419.95	13842	2,419.95
GLOBE STYLE						
2 1/2"	5 1/2"	4	56238	\$ 419.95	—	—
3"	6"	4	56239	469.95	13849	\$ 564.95
4"	7 1/2"	8	56240	599.95	13850	744.95
6"	9 1/2"	8	56242	979.95	13851	1,309.95
8"	12 1/2"	8	56243	1,529.95	13852	2,159.95
10"	15 1/2"	12	56244	2,249.95	13853	3,449.95
12"	14 1/2"	12	56245	3,539.95	13854	5,113.00

Fill excessive space with our **Flange Spacers** on page 1068 of our Pipe Section.



Fax 1-847-689-3030

Phone 1-800-548-1234

Check **VALVES**

NIBCO
AHEAD OF THE FLOW™



Water Style Check Valve



Globe Style Check Valve

Made in U.S.A.



NIBCO® Silent Check Valves

- Prevent water hammer
- Choose from metal or resilient Buna-N seat



NIBCO silent check valves feature a stainless steel spring that ensures valve is closed before flow direction can reverse, preventing water hammer. Valves are suitable for installation both horizontally and vertically (when flow is upward). With only 1/2 psi cracking pressure, valves pose minimal flow restriction. Choose from wafer or globe style valve bodies with bronze or resilient seats. Resilient seat valves include a replaceable Buna-N seat.

Note: Larger sizes and additional options, including Class 250 valves, stainless steel internals and grooved end bodies are available. Contact USABlueBook for more information.

Valve construction:	cast iron
Seat:	bronze or bronze with Buna-N
Max psi rating:	200 psi
Connections:	wafer or flanged



SIZE	FACE TO FACE	# OF BOLTS	METAL SEAT		BUNA-N SEAT	
			STOCK #	EACH	STOCK #	EACH
WAFAER STYLE						
2"	2.63"	4	56381	\$ 208.95	56389	\$ 260.95
2 1/2"	2.88"	4	56382	236.95	56390	314.95
3"	3.13"	4	56383	262.95	56391	354.95
4"	4"	8	56384	354.95	56392	474.95
6"	5.5"	8	56386	639.95	56394	814.95
8"	6.5"	8	56387	1,159.95	56395	1,369.95
10"	8.25"	12	56388	1,749.95	56396	2,039.95
GLOBE STYLE						
2 1/2"	5.5"	4	56397	\$ 444.95	56405	\$ 514.95
3"	6"	4	56398	519.95	56406	659.95
4"	7.25"	8	56399	674.95	56407	789.95
6"	9.75"	8	56401	1,119.95	56408	1,299.95
8"	12.5"	8	56402	1,589.95	56409	1,889.95
10"	15.5"	12	56403	2,379.95	56410	2,649.95

About Check Valves

Check valves come in a wide range of styles and materials for use in a broad array of applications. Standard brass and bronze swing checks are those commonly used by the plumbing trade in potable water systems. Silent checks, double door wafer and small poppet style valves feature internal springs for fast closure, preventing water hammer. Check valves with minimal internal restriction are used in wastewater as well as water applications, and are available in both flanged and wafer styles. Wafer check valves with external lever and spring are generally used with lift station pumps. For chemical lines, choose PVC checks with your choice of EPDM or Viton® seals.



www.usabluebook.com

USABlueBook

1619

Check VALVES

PVC Industrial Swing Check Valves

- Fully serviceable, replaceable components
- Rugged stainless steel external hardware
- Heavy-body all-plastic interior construction won't rust or corrode

Use these industrial-grade valves for high-volume fluid transfer applications. They offer optimum flow and positive shutoff with minimum turbulence. The check disc responds quickly to backflow with as little as 0.5 psi closing pressure, which reduces slamming.

Valves are designed for horizontal installations, but you can use them in an up-flow only vertical position.

A flow arrow on the valve helps you install them correctly. Choose valves in standard configuration, or with an exterior counter balance. The counter balance helps with positive seating of the valve and shows the position of the discs.

Valve construction:	PVC
Seal:	EPDM
Disk:	PVC
Max psi rating:	3/4 to 4": 150 psi; 6": 100 psi; 8": 70 psi
Connections:	flanged



34920



34930

SIZE	FACE TO FACE	# OF BOLTS	WT (LBS)	STANDARD		WITH COUNTER BALANCE	
				STOCK #	EACH	STOCK #	EACH
3/4"	5 1/2"	4	2	34920	\$ 319.95	34930	\$ 624.95
1"	6 1/2"	4	3	34921	369.95	34931	669.95
1 1/4"	7 1/2"	4	5	34922	444.95	34932	709.95
1 1/2"	7 3/4"	4	5	34923	459.95	34933	754.95
2"	7 1/4"	4	7	34924	569.95	34934	944.95
2 1/2"	10 1/4"	4	15	34925	794.95	34935	1,159.95
3"	10 1/4"	4	15	34926	844.95	34936	1,199.95
4"	11 1/2"	8	18	34927	1,219.95	34937	1,579.95
6"	15 1/4"	8	42	34928	1,279.95	34938	1,689.95
8"	19 1/2"	8	68	34929	1,829.95	34939	2,349.95

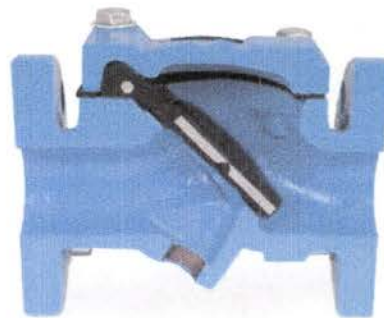
Rubber Flapper Check Valves

- Bubble-tight sealing; ideal for water and wastewater installations
- Virtually maintenance free
- Full AWWA C508 Compliance

The smooth full-flow design of these valves enables them to function without clogging, even in the most demanding wastewater pumping applications. The flapper closes without slamming, eliminating water hammer in pressurized water systems. Since there are no shafts, bearings or seals, valve maintenance is virtually eliminated. Durable Buna-N flappers have undergone a 1-million continuous cycle test with no signs of wear or distortion to the valve seat. Access the flapper through the top cover plate without removing the valve from the line.

Valves mount horizontally or vertically for upward flow. Optional back flush, mounted on the lower side of the valve body, pushes the flapper away from the seat, allowing a reverse flow of water. **Sizes 6" and up ship motor freight.** We carry only high-quality brands such as GA, Milliken and Val-Matic.

Valve construction:	ductile iron
Seals:	Nitrile
Flapper:	Buna-N
Max psi rating:	250 psi
Connections:	flanged (class 125 flanges)
Certifications:	AWWA C508



Cutaway View

SIZE (FLG)	LENGTH	# OF BOLTS	WT (LBS)	WITHOUT BACKFLUSH OPTION		WITH BACKFLUSH OPTION	
				STOCK #	EACH	STOCK #	EACH
2"	8"	4	30	20844	\$ 389.95	20852	\$ 624.95
2 1/2"	8.5"	4	32	20845	464.95	20853	684.95
3"	9.5"	4	40	20846	484.95	20854	689.95
4"	11.5"	8	65	20847	569.95	20855	809.95
6"	15"	8	100	20848	899.95	20856	1,219.95
8"	19.5"	8	200	20849	1,309.95	20857	1,859.95
10"	24.5"	12	375	20850	2,559.95	20858	2,979.95
12"	27.5"	12	525	20851	3,529.95	20859	4,279.95

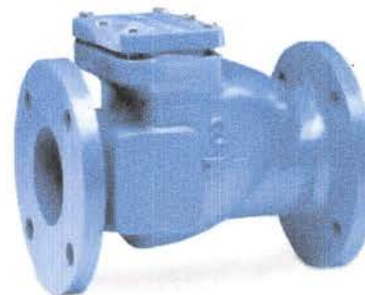
Flomatic™ 78 Swing Check Valves

- Use in water and wastewater systems, including slurry applications
- Mount horizontally or vertically
- No metal hinges, bushings or shafts to wear out

Flanged cast-iron bodies have access covers secured with stainless steel fasteners for easy inspection and maintenance. One-piece neoprene flappers have encapsulated steel in the sealing surface area for strength and rigidity, and swing fully open for unrestricted flow with little resistance. Maintenance-free hingeless design offers long life.

For positive sealing, a minimum of 5 psi (11.5 ft H₂O) backpressure is recommended. Larger sizes through 14" are available. Stock numbers 35701 and 35703 ship motor freight.

Valve construction:	cast iron
Seals:	neoprene
Max psi rating:	200 psi
Temperature:	140°F
Connections:	flanged



Hingeless design offers long life

35693

SIZE 150# FLANGE	FACE TO FACE	WT (LBS)	STOCK #	EACH
2 1/2"	9 1/8"	29	35693	\$ 414.95
3"	10"	38	35695	419.95
4"	13"	56	35697	524.95
6"	18"	106	35701	849.95
8"	18"	180	35703	1,709.95

Fax 1-847-689-3030

Phone 1-800-548-1234

www.usabluebook.com

USABlueBook

1617

Butterfly VALVES

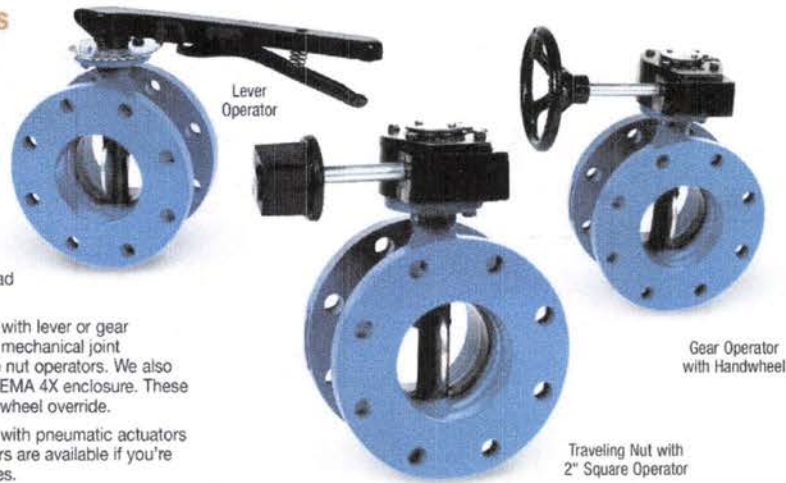
AWWA Flanged Butterfly Valves

- Self-centering discs; no adjustment necessary
- Shorter than flanged gate valves for easy installation in tight quarters

These valves are an excellent choice in water system applications requiring throttling. Resilient seats provide positive shutoff when you need it, and streamlined lens-shaped discs minimize head loss. Low-friction, fiberglass-reinforced nylon bearings are self-lubricating and provide exceptionally long life. Buna-N body seat is permanently bonded to the iron body instead of the disc for maximum abrasion resistance.

For above-ground service, order the flanged valve with lever or gear operators. For buried service, we offer valves with mechanical joint connections, traveling nut actuators and 2" square nut operators. We also offer electrically actuated valves with a 100 VAC NEMA 4X enclosure. These are for on/off service, and feature a manually handwheel override.

Larger sizes up to 24" and AWWA butterfly valves with pneumatic actuators are also available — call for a quote. Flange spacers are available if you're retrofitting cast-iron gate valves with butterfly valves.



SIZE	OVERALL LENGTH	# OF BOLTS	WEIGHT (LBS)	STOCK #	EACH
LEVER OPERATOR					
3" FLG x FLG	5"	4	23	64284	\$ 295.95
4" FLG x FLG	5"	8	37	64285	379.95
6" FLG x FLG	5"	8	56	64286	429.95
GEAR OPERATOR* w/ HANDWHEEL					
3" FLG x FLG	5"	4	30	64288	\$ 319.95
4" FLG x FLG	5"	8	44	64289	394.95
6" FLG x FLG	5"	8	63	64290	494.95
8" FLG x FLG	6"	8	104	64291	704.95
10" FLG x FLG	8"	12	147	64292	914.95
12" FLG x FLG	8"	12	195	64293	1,419.95
Optional 2" Square Nut to Replace Hand Wheel				64294	28.95
TRAVELING NUT w/ 2" SQ OPERATOR					
4" MJ x MJ	8 1/4"	8	44	64295	\$ 519.95
6" MJ x MJ	8 1/2"	8	63	64296	604.95
8" MJ x MJ	8 3/4"	8	104	64297	744.95
10" MJ x MJ	9 1/4"	12	147	64298	1,069.95
12" MJ x MJ	9 3/4"	12	195	64299	1,239.95

* Gearbox is for above-ground service only.

Valve construction: heavy-duty cast iron
Seal: Buna-N body seat
Shafts: sizes 3 to 8": 304 SS; sizes 10"+: two-piece design
Disc: sizes 3 to 6": 316 SS; sizes 8"+: epoxy-coated iron
Max psi rating: 200 psi
Applications: throttling
Connections: flanged or mechanical joint
Certification: AWWA C504

SIZE	OVERALL LENGTH	# OF BOLTS	WEIGHT (LBS)	STOCK #	EACH
110 VAC ELECTRICALLY ACTUATED					
3" FLG x FLG	5"	4	40	36157	\$ 1,289.95
4" FLG x FLG	5"	8	57	36158	1,409.95
6" FLG x FLG	5"	8	75	36159	1,839.95
8" FLG x FLG	6"	8	125	36160	2,249.95
10" FLG x FLG	8"	12	164	36161	2,909.95
12" FLG x FLG	8"	12	220	36162	3,849.95

Actuated Cast-Iron Butterfly Valves

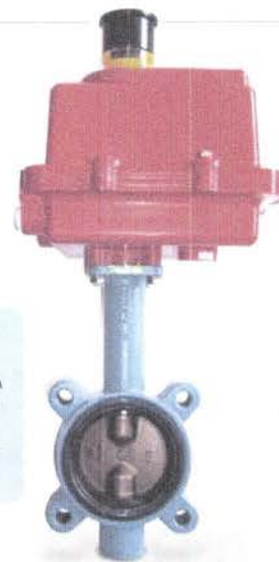
- Exceptional durability in municipal and industrial water service
- Rated for water, air, steam, oil, gas and vacuum
- Choice of wafer or lug style

These high-quality butterfly valves feature cast-iron bodies, EPDM seats and 316 SS internals.

Options available: Pneumatic actuators, heaters, 4-20 mA positioning circuitry, additional switches for remote indicators and alternate voltages. Contact USABlueBook for details.

SIZE	STYLE	FACE TO FACE	CYCLE TIME (SECONDS)	STOCK #	EACH
3"	Wafer	1 1/2"	5	64078	\$ 649.95
3"	Lug	1 1/2"	5	64082	659.95
4"	Wafer	2 1/2"	10	64079	934.95
4"	Lug	2 1/2"	10	64083	944.95
6"	Wafer	2 1/2"	25	64080	1,079.95
6"	Lug	2 1/2"	25	64084	1,129.95
8"	Wafer	2 1/2"	25	64081	1,449.95
8"	Lug	2 1/2"	25	64085	1,549.95

Valve construction: cast iron
Disc: 316 SS
Actuators: 115V w/NEMA 4X enclosures
Max psi rating: 200 psi
Applications: on/off service
Connections: wafer or lug



Fax 1-847-689-3030

Phone 1-800-548-1234

www.usabluebook.com

USABlueBook

1603

Invoice



Innovative Metering Solutions, Inc.
 2501-A Merchant Ave.
 Odessa, FL 33556
 Ph: 727.375.9701
 Fax: 727.375.9703

Date	Invoice #
11/5/2014	5743

Bill To
Holiday Gardens Utility, LLC. Attn: Mike Smallridge 1902 Barton Park Rd. Suite 201 Auburndale, FL 33823

Ship To
Holiday Gardens Utility, LLC Attn: Mike Smallridge PO BOX 1798 Eaton Park, FL 33840

PO #	IMS Quote #	Rep	Ship	Via	F.O.B.	Terms
Mike	SRC	SRC	11/5/2014	Cust. Pick Up	Destination	Net 30
Quantity	Description			Price Each	Amount	
1	TSM 4"-TP-RND-yr of manuf-cert.test			1,360.00	1,360.00	
1	R4" TSM local-gallon-PL/PS-yr. of manuf-torx					
2	(8) 5/8" X 3" A307 Zinc plated bolts & nuts. For 4" CI flange connections (1 side)			6.15	12.30	
6	1/8" thick Red Rubber Full Face gasket, 4"			1.78	10.68	
2	1/8" thick Black Neoprene Full Face gasket, 4"			1.78	3.56	
	Polk County Sales Tax Surcharge on \$5000, 1%			13.87	13.87	
	State of Florida General Sales Tax - 6%			6.00%	83.19	
<i>JSB</i>						

Thank you for your business. Please remit payment to the above address. Please see our website for payment and return terms and conditions.

Total	\$1,483.60
--------------	------------

www.inmetering.com

USABlueBook[®]

Get the Best Treatment™

INVOICE

INVOICE NO.	PAGE NO.
489978	1 of 1
CUSTOMER NO.	DATE
1032635	10/31/14

Remit To:
P.O. Box 9004
Gurnee, IL 60031-9004
TEL: (847) 689-3000
FAX: (847) 689-3001
TOLL FREE: 1-800-493-9876
F.E.I.N.: 52-2418852

View online at: <http://usabluebook.billtrust.com>
Web Enrollment Token: DDS FMB FDP

BILL TO: 1032635
1644 1 MB 0.435 E0017X 10018 01126955138 P2246860 0001:0001

SHIP TO: 1



HOLIDAY GARDENS UTILITIES LLC
1902 BARTON PARK RD STE 201
AUBURNDALE FL 33823-3941

HOLIDAY GARDENS UTILITIES LLC
1902 BARTON PARD RD STE 201
AUBURNDALE FL 33823
USA

Attention: MIKE SMALLRIDGE

CUSTOMER P.O. NO.	SHIP DATE	SLP	TERMS	TAX CODE	SALES ORDER NO.	W/H	FREIGHT	SHIP VIA		
VERBAL	10/31/14	MEL	NET 30	FL	969087	44	PREPAID	UPS		
USA STOCK NO.	DESCRIPTION			ORDERED	SHIPPED	BACKORDER	U/M	PRICE	PER	EXTENSION
PACK	New Customer FOR PERSONALIZED SERVICE CONTACT MELISSA AT 847-377-5133 20% OFF RAYOVAC FLASHLIGHTS AND BATTERIES CODE ARA			1	1	0	EA	0.00	EA	0.00
60430	Silent Check Valve 4' Wafer Style			1	1	0	EA	240.95	EA	240.95

JJB

THANK YOU for your business!
1.5% MONTHLY FINANCE CHARGE
ON AMOUNTS 30 DAYS PAST DUE
Discounts Apply to Merchandise Only

MERCHANDISE	MISCELLANEOUS	DISCOUNT	TAX	FREIGHT	TOTAL
240.95	0.00	0.00	14.46	22.35	277.76

Should it become necessary to refer your unpaid balance to a collection agency, a collection fee, not to exceed 25% of the balance referred; plus reasonable attorney's fees; and court costs when necessary, will be added to the balance due.

Please Detach and Return Bottom Portion to Insure Proper Credit to Your Account

USABlueBook[®]

Get the Best Treatment™

****IMPORTANT****

Please include this customer #
on the face of your remittance check.

INVOICE NO.	CUSTOMER NO.	DATE	TOTAL
489978	1032635	10/31/14	277.76

HOLIDAY GARDENS UTILITIES LLC
1902 BARTON PARK RD STE 201
AUBURNDALE FL 33823-3941

REMITTANCE ADDRESS

USABlueBook
P.O. Box 9004
Gurnee, IL 60031-9004

DESCRIPTION

Badger Meter offers the 4" Turbo Series meter in Cast Bronze and a Low Lead Alloy. The Cast Bronze (Trade Designation: Turbo Series B81-NS) and the Low Lead Alloy (Trade Designation: Turbo Series LL-NS) versions comply with NSF/ANSI Standard 61 and carry the NSF-61 Mark on the product.

APPLICATIONS: For use in measurement of potable cold water in commercial and industrial services where flow is in one direction only.

OPERATION: Water flows into the meter's measuring element contacting the multi-vaned rotor. Flow readings are obtained by rotor revolutions transmitted by magnetic drive coupling through the meter's cover plate to the sealed register. Magnetic drive is achieved by a right angle worm drive, coupling the rotor to a vertical transmission spindle, driving a gear set rotating the magnet carrier. A ceramic magnet in a carrier rotates around a vertical axis. Rotor rotation is transmitted to the register gearing through this magnetic coupling.

The turbo measuring element is designed to greatly reduce wear by reducing friction potential between the moving parts of the rotor and bearing system. Less wear, in this critical area of the design, provides the utility manager with a lower life cycle cost for meter application. Throughout the normal operating range of the meter, the rotor floats between the thrust bearing system.

OPERATING PERFORMANCE: The Badger® Recordall Turbo 1000 meter meets and exceeds registration accuracy for the low, normal, and maximum continuous operation flow rates as stated in AWWA Standard C701.

CONSTRUCTION: The Badger Recordall Turbo 1000 meter construction which complies with ANSI and AWWA C701 standards, consists of three basic components: meter housing, measuring element and permanently sealed register. The housing is bronze with round flanges. The measuring element consists of the transmission coupling, measuring element insert, rotor, inlet and outlet straightening vanes/nose cones and calibration ring assembly. The unique inlet and outlet straightening vanes minimize swirl from piping arrangements upstream as well as downstream.

To simplify maintenance, the register and measuring element can be removed without removing the meter housing from the installation. No change gears are required for accuracy calibration. Interchangeability of certain parts between 1 1/2" - 4" like-sized meters also minimizes spare parts inventory investment.

MAGNETIC DRIVE: Direct magnetic drive, through the use of high-strength magnets, provides positive, reliable and dependable register coupling for straight-reading, remote or automatic meter reading options.

SEALED REGISTER: The standard register consists of a straight-reading odometer-type totalization display. 360° test circle with center sweep hand and flow finder to detect leaks. Register gearing consists of self-lubricating thermoplastic gears to minimize friction and provide long life. Permanently sealed; dirt, moisture, tampering and lens fogging problems are eliminated. Multi-position register simplifies meter installation and reading. Automatic meter reading and close proximity systems are available for all Recordall Turbo meters. (See back of sheet for additional information.) All reading options are removable from the meter without disrupting water service.

TAMPER-RESISTANT FEATURES: Customer removal of the register to obtain free water can be prevented if the tamper detection seal wire screw or TORX® tamper resistant seal screw is added to the meter. Either can be installed at the meter site or at the factory. A tamper resistant calibration plug seal provides protection from unauthorized personnel.

STRAINER: A separate strainer is recommended to protect the measuring element. See Technical Brief PS-T-1 for strainer dimensions.

MAINTENANCE: Badger Recordall Turbo meters are designed and manufactured to provide long-term service with minimal maintenance. When maintenance is required, it can be performed easily either at the meter installation or at any other convenient location. As an alternative to repair by the utility, Badger offers various maintenance and meter component exchange programs to fit the needs of the utility.

CONNECTIONS: Companion flanges for installation of meters on various pipe types and sizes are available in cast iron or bronze as an option.

TEST PLUG: An optional 2" NPT test port puts an end to removing and reinstalling meters during field accuracy and pressure testing.



**Turbo 1000 with Optional
2" Test Plug**

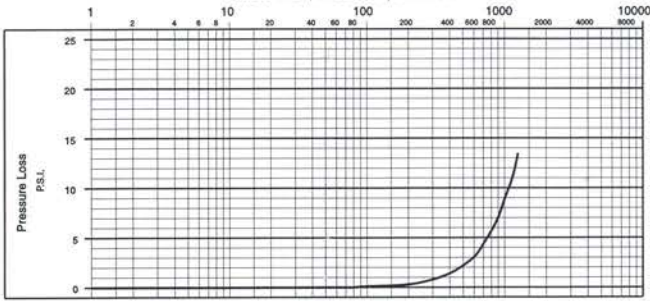
SPECIFICATIONS

Typical Operating Range (100% ± 1.5%)	10 -1250 GPM (2.3 to 284 m³/h)
Maximum Continuous Operation	1000 GPM (227.1 m³/h)
Maximum Intermittent Flow	1250 GPM (284 m³/h)
Typical Low Flow (Min. 95%)	6 GPM (1.4 m³/h)
Pressure Loss at Maximum Continuous Operation	7.3 PSI (.50 bar at 227.1 m³/h)
Maximum Operating Temperature	120°F (49°C)
Maximum Operating Pressure	150 PSI (10 bar)
Meter Flanges	4" Round Flanges AWWA 125 pound class
Register	Straight reading, permanently sealed magnetic drive standard Automatic Meter Reading and Close Proximity units optional
Registration	100,000,000 Gallons 100 gallons/sweep hand revolution 10,000,000 Cubic Feet 10 cubic ft./sweep hand revolution 1,000,000 m³ 1 m³/sweep hand revolution 100,000,000 Imperial Gallons 100 Imperial Gallons/sweep hand revolution

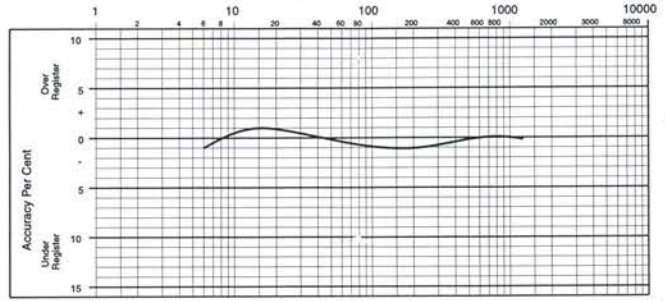
MATERIALS

Housing	Cast Bronze (B81), Low Lead Alloy
Turbo Head	Cast Bronze (B81), Low Lead Alloy
Nose Cone and Straightening Vanes	Thermoplastic
Rotor	Thermoplastic
Rotor Radial Bearings	Lubricated Thermoplastic
Rotor Thrust Bearings	Sapphire Jewels
Rotor Bearing Pivots	Passivated 316 Stainless Steel
Calibration Mechanism	Stainless Steel and Thermoplastic
Magnet	Ceramic
Register Lid and Shroud	Thermoplastic, Bronze
Trim	Stainless Steel

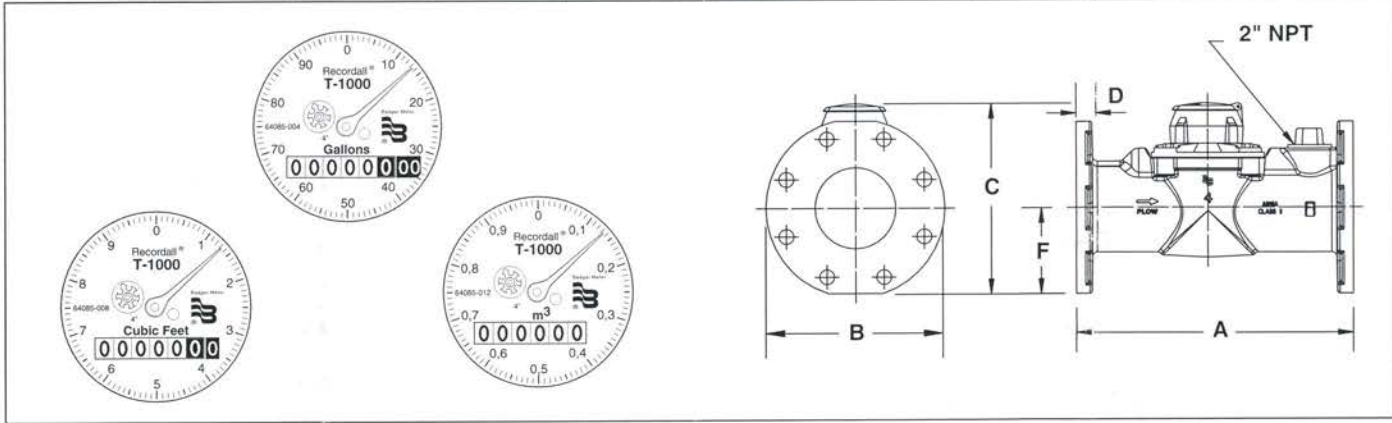
PRESSURE LOSS CHART
Rate of Flow, in Gallons per Minute



ACCURACY CHART
Rate of Flow, in Gallons per Minute



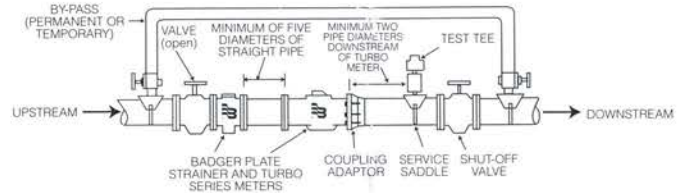
Meter & Pipe Size	DIMENSIONS								
	Length A	Width B	Height C	Flange D	Bolt Circle	Centerline F	No. Bolts	Net Weight	Shipping Weight
4" RD (DN 100)	14" (356mm)	9" (229mm)	9 21/32" (245mm)	13/16" (21mm)	7 1/2" (191mm)	4 5/16" (109mm)	8	40 lb. (18.1 kg)	45 lb. (20.4 kg)



PROPER INSTALLATION: The following installation guidelines will insure optimum field performance and reliability when installing a Badger Turbo meter.

1. A strainer is recommended to insure optimum flow conditioning and protection for the turbo meter measuring element.
2. When using a strainer, five (5) diameters of straight pipe separating the strainer upstream of the meter is recommended.
3. ONLY full-open gate valves should be used immediately upstream of the meter. Butterfly valves MUST be five (5) pipe diameters or more upstream of the meter. Full-open gate or butterfly valves can be used downstream.
4. DO NOT install pressure reducing devices or check valves upstream of the meter.

5. Unweighted check valves MUST be located at least three (3) pipe diameters downstream of the meter.
6. Pressure reducing devices and externally weighted check valves MUST be located at least five (5) pipe diameters downstream of the meter.



Badger® and Recordall® are registered trademarks of Badger Meter, Inc.



Please see our website at
www.badgermeter.com
for specific contacts.

Copyright © Badger Meter, Inc. 2006. All rights reserved.

Due to continuous research, product improvements and enhancements, Badger Meter reserves the right to change product or system specifications without notice, except to the extent an outstanding contractual obligation exists.



BadgerMeter, Inc.

P.O. Box 245036, Milwaukee, WI 53224-9536
(800) 876-3837 / Fax: (888) 371-5982

www.badgermeter.com



Quote # MD-010515-01-01

Quotation

22 South Lake Avenue
 Avon Park, FL 33825-3902
www.avanticompany.com

Toll Free: 1-800-284-5231
 Fax: 863-453-0085
 E-Mail: info@avanticompany.com

Date 1/5/15

Terms Net 30 Days

Prices FOB Factory

Delivery 2 to 3 weeks

Phone # (352) 302-7406

Fax # _____

Reference # wells sites

To: Mr. Mike Smallridge
 Florida Utility Services
 1902 Martin Park Rd
 Arburndale, FL 33823
utilityconsultant@yahoo.com

We are pleased to quote the following:

Item	Quantity	Description	Unit Price	Total
A	1	McCrometer 4" McMag3000 Battery Powered Electromagnetic Flow meter, stainless steel saddle, with digital indicator - totalizer, P/N: G304-X-XX GPM: Min 90 - Max 900 <i>Holiday Gardens.</i>	\$1,550.00	\$1,550.00
				Plus Freight

Quoted By: *Matt Devlin* (Matt Devlin) / Accepted By: _____

Prices quoted above are current prices in effect and are subject to acceptance within 30 days from the above date, and are firm on an order resulting from this quote scheduled to ship within 60 days from date of order entry. All items quoted will be produced in strict accordance to any Government Regulation in effect including Fair Labor-Standards Act, OSHA, and Equal Employment Opportunity Executive orders. Delivery schedules are contingent upon strikes, accidents, fires, availability of materials and all other causes beyond our control.