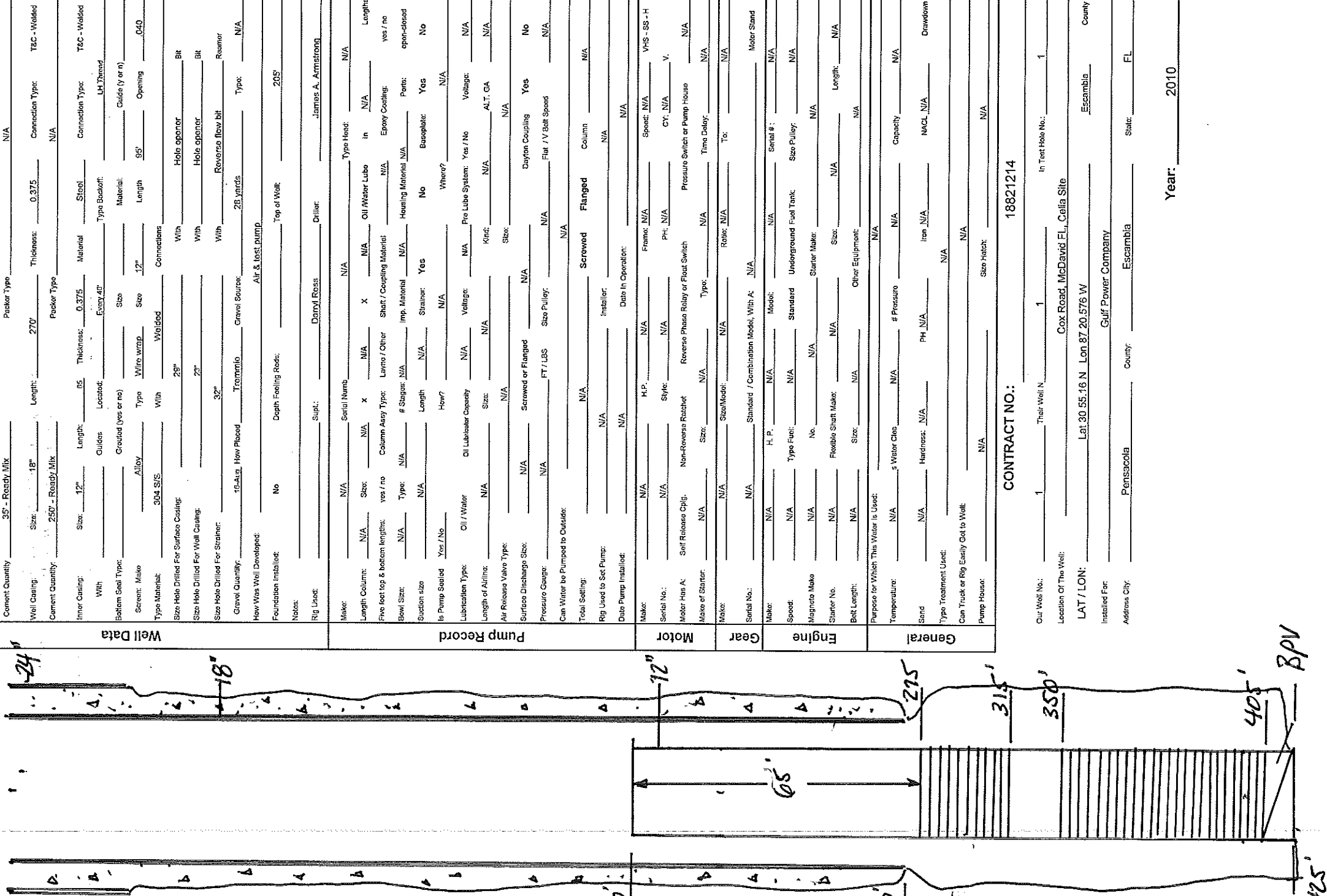


Drawing of The Well



Well Data

Started Well: 10/1/2010 Completed 12/1/2010 Measurements Taken From: (ground) (ceiling) (base plate) 137'

Total Depth: 425' Elevation: N/A Static Water Level: 137'

Surface Casing: Size: 24" Length: 30' Thickness: 0.375" Connection Type: T&C - Welded

Cement Quantity: 35' - Ready Mix Packer Type: N/A

Well Casing: Size: 18" Length: 270' Thickness: 0.375" Connection Type: T&C - Welded

Cement Quantity: 250' - Ready Mix Packer Type: N/A

Inner Casing: Size: 12" Length: 65' Thickness: 0.375" Material: Steel Connection Type: T&C - Welded

With Cullens Located: Every 40' Type Backoff: LH Thread

Bottom Seal Type: Gouted (yes or no) Size Material Culls (y or n)

Screen: Make Alloy Type Wire wrap Size 12" Length 95' Opening 0.40

Type Material: 304 S/S With Welded Connections

Size Hole Drilled For Surface Casing: 28" With Hole opener Bit

Size Hole Drilled For Well Casing: 32" With Hole opener Bit

Size Hole Drilled For Strainer: 32" With Reverse flow bit Roamer

Gravel Quantity: 16-Avg. How Placed Tremmie Gravel Source: 28 yards Type: N/A

How Was Well Developed: Air & test pump

Foundation Installed: No Depth Footing Rods: Top of Well: 205'

Notes:

Rig Used: Darryl Ross Driller: James A. Armstrong

Pump Record

Make: N/A Serial Num: N/A Type Head: N/A

Length Columns: N/A Size: N/A X N/A Oil/Water Lubo in N/A Lengths

Five feet top & bottom lengths: yes / no Column Assy Type: Lavo / Other Shaft / Coupling Material N/A Epoxy Coating: yes / no

Bowl Size: N/A Type: N/A # Stages: N/A Imp. Material N/A Housing Material N/A Parts: open-closed

Suction size: N/A Length: N/A Strainer: Yes No Baseplate: Yes No

Is Pump Sealed Yes / No How? N/A Whero?

Lubrication Type: Oil / Water Oil Lubricator Capacity N/A Voltage: N/A Pre Lubo System: Yes / No Voltage: N/A

Length of Airline: N/A Size: N/A Kind: N/A ALT. GA N/A

Air Release Valve Type: N/A Screwed or Flanged N/A Dynon Coupling Yes No

Surface Discharge Size: N/A FT / LBS Size Pulley: N/A Flat / V Belt Speed N/A

Pressure Gauge: N/A

Can Water be Pumped to Outside: N/A

Total Setting: N/A

Rig Used to Set Pump: N/A Inhabler: N/A

Date Pump Installed: N/A Date in Operation: N/A

Make: N/A H.P.: N/A Frame: N/A Speed: N/A VHS - SS - H

Serial No.: N/A Style: N/A PH: N/A CY: N/A V.

Motor Hire A: Self Release Oplg: Non-Reverse Ratchet Reverse Phase Relay or Float Switch Pressure Switch or Pump House N/A

Make of Starter: N/A Size: N/A Type: N/A Time Delay: N/A

Make: N/A Size/Model: N/A Ratio: N/A To: N/A

Serial No.: N/A Standard / Combination Model, With A: N/A Motor Stand

Make: N/A H. P.: N/A Model: N/A Serial #: N/A

Speed: N/A Type Fuel: N/A Standard Underground Fuel Tank Size Pulley: N/A

Magneto Make N/A No. N/A Starter Make: N/A

Starter No. N/A Flexible Shaft Make: N/A Size: N/A Length: N/A

Belt Length: N/A Size: N/A Other Equipment: N/A

Purpose for Which This Motor is Used: N/A

Temperature: N/A s Water Clea N/A # Pressure N/A Capacity N/A

Sand N/A Hardness: N/A PH N/A Iron N/A NACL N/A Drawdown

Type Treatment Used: N/A

Can Truck or Rig Eadly Get to Well: N/A

Pump House: N/A Size Hatch: N/A

General

Our Well No.: 1 Their Well No.: 1 In Test Hole No.: 1

Location of The Well: Cox Road, McDavid EL, Celta Site

LAT / LON: Lat. 30 55.16 N Lon 87 20.576 W Escambia County

Installed For: Gulf Power Company

Address City: Pensacola County: Escambia State: FL

CONTRACT NO.: 18821214

Year: 2010

BPV

425'

