



Robert L. McGee, Jr.  
Regulatory & Pricing Manager

One Energy Place  
Pensacola, FL 32520-0780  
850 444 6530 tel  
850 444 6026 fax  
rlmcgee@southernco.com

FILED MAR 31, 2017  
DOCUMENT NO. 03953-17  
FPSC - COMMISSION CLERK

March 31, 2017

Ms. Carlotta Stauffer, Commission Clerk  
Florida Public Service Commission  
2540 Shumard Oak Boulevard  
Tallahassee FL 32399-0850

Dear Ms. Stauffer:

Attached for electronic filing is Gulf Power Company's Petition for Approval of 2017 Revisions to its Underground Residential Differential Tariffs along with Gulf's Overhead/Underground Residential Differential Cost Data and supporting work papers.

Please return a copy of the approved tariff sheets to my attention.

Sincerely,

A handwritten signature in blue ink that reads "Robert L. McGee, Jr.".

Robert L. McGee, Jr.  
Regulatory and Pricing Manager

md

Attachments

cc: Beggs & Lane  
Jeffrey A. Stone, Esq.

BEFORE THE FLORIDA PUBLIC SERVICE COMMISSION

In re: Request by Gulf Power Company to ) Docket No.  
modify its underground residential differential )  
tariffs. ) Filed: March 31, 2017  
\_\_\_\_\_ )

**PETITION FOR APPROVAL OF 2017  
REVISIONS TO GULF POWER COMPANY'S  
UNDERGROUND RESIDENTIAL DIFFERENTIAL TARIFFS**

Gulf Power Company ("Gulf Power," "Gulf," or "the Company"), by and through its undersigned counsel, and pursuant to Rules 25-6.078(3) and 25-6.033, Florida Administrative Code ("F.A.C."), hereby petitions the Florida Public Service Commission (the "Commission") for approval of Gulf's revisions to its Underground Residential Differential ("URD") tariff sheets, as set forth below. In support of this petition, Gulf states as follows:

1. Petitioner, Gulf Power, is an investor-owned utility subject to the jurisdiction of the Commission under Chapter 366, Florida Statutes. Gulf's corporate offices are located at One Energy Place, Pensacola, Florida 32520.

2. The names, addresses and telephone numbers of Gulf's representatives to receive communications regarding this proceeding are:

Robert L. McGee, Jr.  
Gulf Power Company  
One Energy Place  
Pensacola, Florida  
32520-0780  
(850) 444-6530  
(850) 444-6026 (facsimile)  
rlmcgee@southernco.com

Jeffrey A. Stone, Esq.  
jas@beggslane.com  
Russell A. Badders, Esq.  
rab@beggslane.com  
Steven R. Griffin, Esq.  
srg@beggslane.com  
Beggs & Lane, R.L.L.P.  
P.O. Box 12950  
Pensacola, Florida  
32591-2950  
(850) 432-2451  
(850) 469-3331 (facsimile)

3. The agency affected by this petition is the Florida Public Service Commission, 2540 Shumard Oak Boulevard, Tallahassee, Florida 32399-0850.

4. This petition is not a petition addressing an agency decision which has already been made. Therefore, Gulf cannot state how it received notice of an agency action, facts that warrant reversal of an agency proposed action, or rules or statutes that require reversal or modification of any agency's proposed action.

5. Rule 25-6.078(3), F.A.C., requires each utility to file with the Commission, on or before October 15 of each year, Division of Economic Regulation Form PSC/ECO 13-E, Schedule 1. If the cost differential for underground service as calculated in Schedule 1 varies from the Commission-approved differential by plus or minus 10 percent or more, the utility must file a written policy and supporting data and analyses as prescribed in Sections (1), (4) and (5) of Rule 25-6.078 on or before April 1 of the following year. Additionally, Rule 25-6.078(3), F.A.C., requires each utility to file a written policy and supporting data and analyses at least once every three years regardless of whether the 10 percent threshold is triggered.

6. Gulf's current URD charges and associated tariff sheets were approved in Docket No. 150112-EI via Order No. PSC-15-0274-TRF-EI dated July 6, 2015. On October 14, 2016, Gulf filed Form PSC/ECO 13-E, Schedule 1 with the Division of Economic Regulation. That filing shows that the cost differential calculated in Schedule 1 for underground service varies from the Commission-approved differential by plus or minus 10 percent or more. Consequently, Gulf, consistent with Rule 25-6.078(3), F.A.C., is submitting revised URD tariff sheets for approval along with supporting data and analyses.

7. Gulf's revised URD tariff sheets are attached in final and legislative format as Appendix "A" to this petition. Appendix "A" includes the following revised tariff sheets: 4.25,

4.26, 4.26.1, 4.26.2, and 4.28. Appendix "B" to this petition consists of a report by Gulf Power which contains the data and analyses underlying Gulf's proposed changes to the URD charges and associated tariff sheets.

8. Appendices "A" and "B" filed herewith and incorporated herein by this reference, provide the information required under Rule 25-6.078, F.A.C. and the necessary support for the relief requested in this petition.

**WHEREFORE**, Gulf Power requests the Commission to approve the revised tariff sheets filed in Appendix "A."

Respectfully submitted this 31<sup>st</sup> day of March, 2017.



**JEFFREY A. STONE**  
Florida Bar No. 325953  
**RUSSELL A. BADDERS**  
Florida Bar No. 007455  
**STEVEN R. GRIFFIN**  
Florida Bar No. 627569  
**Beggs & Lane, R.L.L.P.**  
P. O. Box 12950  
501 Commendencia Street  
Pensacola, FL 32576-2950  
(850) 432-2451  
**Attorneys for Gulf Power Company**

# Appendix A



Section No. IV  
 Fourteenth Revised Sheet No. 4.25  
 Canceling Thirteenth Revised Sheet No. 4.25

PAGE	EFFECTIVE DATE
------	----------------

- 6.2.8 DAMAGE TO COMPANY'S EQUIPMENT. The Applicant shall be responsible to ensure that the Company's distribution facilities once installed, are not damaged, destroyed, or otherwise disturbed during the construction of the project. This responsibility shall extend not only to those in his employ, but also to his subcontractors. Should damage occur, the Applicant shall be responsible for the full cost of repairs.
- 6.2.9 PAYMENT OF CHARGES. The Company shall not be obligated to install any facilities until payment of applicable charges, if any, has been completed.

6.3 UNDERGROUND DISTRIBUTION FACILITIES FOR  
 NEW RESIDENTIAL SUBDIVISIONS

- 6.3.1 AVAILABILITY. After receipt of proper application and compliance by the Applicant with applicable Company rules and procedures, the Company will install underground distribution facilities to provide single phase service to new residential subdivisions of five (5) or more building lots.
- 6.3.2 CONTRIBUTION BY APPLICANT.
  - (a) Prior to such installations, the Applicant and the Company will enter into an agreement outlining the terms and conditions of installation, and the Applicant will be required to pay the Company in advance the entire cost as described below:

<u>Option</u>	<u>Low Density Subdivision (\$ per lot)</u>	<u>High Density Subdivision (\$ per lot)</u>
1. Gulf supplies and installs all primary, secondary, and service trench, duct, and cable.	\$498	\$562
2. Applicant installs primary and secondary trench and duct system. Gulf supplies primary and secondary duct and supplies and installs service duct. Gulf supplies and installs primary, secondary, and service cable.	\$307	\$428
3. Applicant supplies and installs primary and secondary trench and duct. Gulf supplies primary and secondary cable. Gulf supplies and installs service duct and cable.	\$181	\$327

All construction done by the Applicant must meet the Company's specifications. All installations must be approved by the Company's authorized representative.

- (b) The Applicant is required to pay a charge per foot and a cost differential for transformers and services (see "Three Phase Lift Station" charts below) for three phase commercial loads requiring 120/240 volt open delta, 120/208 volt wye, or 277/480 volt wye service in new residential subdivisions for each three phase service. This average cost will be added to the advanced payment in 6.3.2(a) above.



Section No. IV  
 Eighteenth Revised Sheet No. 4.26  
 Canceling Seventeenth Revised Sheet No. 4.26

PAGE	EFFECTIVE DATE
------	----------------

6.3.2 (continued)

**THREE PHASE LIFT STATION  
 COSTS TO PROVIDE 3 PH SVC TO LIFT STATION W/IN TYPICAL SUBDIVISION - OPTION 1**

**CUSTOMER REQUEST: 120/208 or 277/480**

MOTOR SIZE	AVAILABLE UNDERGROUND FACILITIES		
	SINGLE PHASE	TWO PHASES	THREE PHASES
<b>&lt; 5HP</b>	\$21.70 per ft plus 3ph padmount tx, pad, and ug service minus one oh transformer, cutout, arrester, and service	\$15.18 per ft plus 3ph padmount tx, pad, and ug service minus one oh transformer, cutout, arrester, and service	\$0 cost per ft plus 3ph padmount tx, pad, and ug service minus one oh transformer, cutout, arrester, and service
<b>5HP &lt; X &lt; 25HP</b>	\$8.88 per ft plus 3ph padmount tx, pad, and ug service minus 2 oh transformers, 2 cutouts, 2 arresters, and service	\$10.80 per ft plus 3ph padmount tx, pad, and ug service minus 2 oh transformers, 2 cutouts, 2 arresters, and service	\$0 cost per ft plus 3ph padmount tx, pad, and ug service minus 2 oh transformers, 2 cutouts, 2 arresters, and service
<b>&gt; 25HP</b>	\$4.51 per ft plus 3ph padmount tx, pad, and ug service minus 3 oh transformers, 3 cutouts, 3 arresters, cluster mt, and service	\$2.36 per ft plus 3ph padmount tx, pad, and ug service minus 3 oh transformers, 3 cutouts, 3 arresters, cluster mt, and service	\$0 cost per ft plus 3ph padmount tx, pad, and ug service minus 3 oh transformers, 3 cutouts, 3 arresters, cluster mt, and service

**CUSTOMER REQUEST: 120/240 OPEN DELTA**

MOTOR SIZE	AVAILABLE UNDERGROUND FACILITIES		
	SINGLE PHASE	TWO PHASES	THREE PHASES
<b>&lt; 5HP</b>	\$10.90 per ft plus 2 padmount tx, 2 pads, and ug service minus one oh transformer, cutout, arrester, and service	\$0 cost per ft plus 2 padmount tx, 2 pads, and ug service minus one oh transformer, cutout, arrester, and service	\$0 cost per ft plus 2 padmount tx, 2 pads, and ug service minus one oh transformer, cutout, arrester, and service
<b>5HP &lt; X &lt; 25HP</b>	\$2.15 per ft plus 2 padmount tx, 2 pads, and ug service minus 2 oh transformers, 2 cutouts, 2 arresters, and service	\$0 cost per ft plus 2 padmount tx, 2 pads, and ug service minus 2 oh transformers, 2 cutouts, 2 arresters, and service	\$0 cost per ft plus 2 padmount tx, 2 pads, and ug service minus 2 oh transformers, 2 cutouts, 2 arresters, and service
<b>&gt; 25HP</b>	\$2.15 per ft plus 2 padmount tx, 2 pads, and ug service minus 2 oh transformers, 2 cutouts, 2 arresters, and service	\$0 cost per ft plus 2 padmount tx, 2 pads, and ug service minus 2 oh transformers, 2 cutouts, 2 arresters, and service	\$0 cost per ft plus 2 padmount tx, 2 pads, and ug service minus 2 oh transformers, 2 cutouts, 2 arresters, and service

**ISSUED BY: S. W. Connally, Jr.**



Section No. IV  
 Sixth Revised Sheet No. 4.26.1  
 Canceling Fifth Revised Sheet No. 4.26.1

PAGE	EFFECTIVE DATE
------	----------------

6.3.2 (continued)

**THREE PHASE LIFT STATION  
 COSTS TO PROVIDE 3 PH SVC TO LIFT STATION W/IN TYPICAL SUBDIVISION - OPTION 2**

**CUSTOMER REQUEST: 120/208 or 277/480**

MOTOR SIZE	AVAILABLE UNDERGROUND FACILITIES		
	SINGLE PHASE	TWO PHASES	THREE PHASES
< 5HP	\$20.98 per ft plus 3ph padmount tx, pad, and ug service minus one oh transformer, cutout, arrester, and service	\$14.79 per ft plus 3ph padmount tx, pad, and ug service minus one oh transformer, cutout, arrester, and service	\$0 cost per ft plus 3ph padmount tx, pad, and ug service minus one oh transformer, cutout, arrester, and service
5HP < X < 25HP	\$8.16 per ft plus 3ph padmount tx, pad, and ug service minus 2 oh transformers, 2 cutouts, 2 arresters, and service	\$10.41 per ft plus 3ph padmount tx, pad, and ug service minus 2 oh transformers, 2 cutouts, 2 arresters, and service	\$0 cost per ft plus 3ph padmount tx, pad, and ug service minus 2 oh transformers, 2 cutouts, 2 arresters, and service
> 25HP	\$3.78 per ft plus 3ph padmount tx, pad, and ug service minus 3 oh transformers, 3 cutouts, 3 arresters, cluster mt, and service	\$1.97 per ft plus 3ph padmount tx, pad, and ug service minus 3 oh transformers, 3 cutouts, 3 arresters, cluster mt, and service	\$0 cost per ft plus 3ph padmount tx, pad, and ug service minus 3 oh transformers, 3 cutouts, 3 arresters, cluster mt, and service

**CUSTOMER REQUEST: 120/240 OPEN DELTA**

MOTOR SIZE	AVAILABLE UNDERGROUND FACILITIES		
	SINGLE PHASE	TWO PHASES	THREE PHASES
< 5HP	\$10.57 per ft plus 2 padmount tx, 2 pads, and ug service minus one oh transformer, cutout, arrester, and service	\$0 cost per ft plus 2 padmount tx, 2 pads, and ug service minus one oh transformer, cutout, arrester, and service	\$0 cost per ft plus 2 padmount tx, 2 pads, and ug service minus one oh transformer, cutout, arrester, and service
5HP < X < 25HP	\$1.81 per ft plus 2 padmount tx, 2 pads, and ug service minus 2 oh transformers, 2 cutouts, 2 arresters, and service	\$0 cost per ft plus 2 padmount tx, 2 pads, and ug service minus 2 oh transformers, 2 cutouts, 2 arresters, and service	\$0 cost per ft plus 2 padmount tx, 2 pads, and ug service minus 2 oh transformers, 2 cutouts, 2 arresters, and service
> 25HP	\$1.81 per ft plus 2 padmount tx, 2 pads, and ug service minus 2 oh transformers, 2 cutouts, 2 arresters, and service	\$0 cost per ft plus 2 padmount tx, 2 pads, and ug service minus 2 oh transformers, 2 cutouts, 2 arresters, and service	\$0 cost per ft plus 2 padmount tx, 2 pads, and ug service minus 2 oh transformers, 2 cutouts, 2 arresters, and service

**ISSUED BY: S. W. Connally, Jr.**





Section No. IV  
 Sixth Revised Sheet No. 4.26.2  
 Canceling Fifth Revised Sheet No. 4.26.2

PAGE	EFFECTIVE DATE
------	----------------

6.3.2 (continued)

**THREE PHASE LIFT STATION  
 COSTS TO PROVIDE 3 PH SVC TO LIFT STATION W/IN TYPICAL SUBDIVISION - OPTION 3**

**CUSTOMER REQUEST: 120/208 or 277/480**

MOTOR SIZE	AVAILABLE UNDERGROUND FACILITIES		
	SINGLE PHASE	TWO PHASES	THREE PHASES
< 5HP	\$18.26 per ft plus 3ph padmount tx, pad, and ug service minus one oh transformer, cutout, arrester, and service	\$13.43 per ft plus 3ph padmount tx, pad, and ug service minus one oh transformer, cutout, arrester, and service	\$0 cost per ft plus 3ph padmount tx, pad, and ug service minus one oh transformer, cutout, arrester, and service
5HP < X < 25HP	\$5.44 per ft plus 3ph padmount tx, pad, and ug service minus 2 oh transformers, 2 cutouts, 2 arresters, and service	\$9.05 per ft plus 3ph padmount tx, pad, and ug service minus 2 oh transformers, 2 cutouts, 2 arresters, and service	\$0 cost per ft plus 3ph padmount tx, pad, and ug service minus 2 oh transformers, 2 cutouts, 2 arresters, and service
> 25HP	\$1.07 per ft plus 3ph padmount tx, pad, and ug service minus 3 oh transformers, 3 cutouts, 3 arresters, cluster mt, and service	\$0.61 per ft plus 3ph padmount tx, pad, and ug service minus 3 oh transformers, 3 cutouts, 3 arresters, cluster mt, and service	\$0 cost per ft plus 3ph padmount tx, pad, and ug service minus 3 oh transformers, 3 cutouts, 3 arresters, cluster mt, and service

**CUSTOMER REQUEST: 120/240 OPEN DELTA**

MOTOR SIZE	AVAILABLE UNDERGROUND FACILITIES		
	SINGLE PHASE	TWO PHASES	THREE PHASES
< 5HP	\$9.21 per ft plus 2 padmount tx, 2 pads, and ug service minus one oh transformer, cutout, arrester, and service	\$0 cost per ft plus 2 padmount tx, 2 pads, and ug service minus one oh transformer, cutout, arrester, and service	\$0 cost per ft plus 2 padmount tx, 2 pads, and ug service minus one oh transformer, cutout, arrester, and service
5HP < X < 25HP	\$0.46 per ft plus 2 padmount tx, 2 pads, and ug service minus 2 oh transformers, 2 cutouts, 2 arresters, and service	\$0 cost per ft plus 2 padmount tx, 2 pads, and ug service minus 2 oh transformers, 2 cutouts, 2 arresters, and service	\$0 cost per ft plus 2 padmount tx, 2 pads, and ug service minus 2 oh transformers, 2 cutouts, 2 arresters, and service
> 25HP	\$0.46 per ft plus 2 padmount tx, 2 pads, and ug service minus 2 oh transformers, 2 cutouts, 2 arresters, and service	\$0 cost per ft plus 2 padmount tx, 2 pads, and ug service minus 2 oh transformers, 2 cutouts, 2 arresters, and service	\$0 cost per ft plus 2 padmount tx, 2 pads, and ug service minus 2 oh transformers, 2 cutouts, 2 arresters, and service

**ISSUED BY: S. W. Connally, Jr.**



Section No. IV  
 Tenth Revised Sheet No. 4.28  
 Canceling Ninth Revised Sheet No. 4.28

PAGE	EFFECTIVE DATE
------	----------------

**6.5 OTHER UNDERGROUND DISTRIBUTION FACILITIES**

6.5.1 APPLICABILITY. This subpart applies to requests for underground facilities addressing the conversion of existing overhead facilities. In order for the Company to take action pursuant to a request for conversion:

- (1) the conversion area must be at least two contiguous city blocks or 1000 feet in length;
- (2) all electric services to the real property on both sides of the existing overhead primary lines must be part of the conversion; and
- (3) all other existing overhead utility facilities (e.g. telephone, CATV, etc.) must also be converted to underground facilities.

6.5.2 NON-BINDING COST ESTIMATES. An Applicant may obtain a non-binding estimate of the charges the Applicant would be obligated to pay in order for the Company to provide underground distribution facilities. This non-binding estimate will be provided to the Applicant without any charge or fee upon completion of the Application for Underground Cost Estimate set forth in Section VII of this tariff, Standard Contract Forms, at Sheet No. 7.43.

6.5.3 BINDING COST ESTIMATES. An Applicant, upon payment of a non-refundable deposit and completion of the Application for Underground Cost Estimate set forth in Section VII of this tariff, Standard Contract Forms, at Sheet No. 7.43, may obtain an estimate of the charges for underground distribution facilities, which estimate the Company would be bound to honor as provided below. The deposit amount, which approximates the engineering costs for underground facilities associated with preparing the requested estimate, shall be calculated as follows:

<u>Conversion</u>	
Urban Commercial	\$5,227 per overhead primary mile
Urban Residential	\$8,510 per overhead primary mile
Rural Residential	\$6,905 per overhead primary mile
210 Lot Subdivision	\$6,550 per overhead primary mile
176 Lot Subdivision	\$11,452 per overhead primary mile

## **Legislative Format**



Section No. IV  
~~Thirteenth~~Fourteenth Revised Sheet No. 4.25  
 Canceling~~Twelfth~~Thirteenth Revised Sheet No. 4.25

PAGE	EFFECTIVE DATE <b>June 18, 2015</b>
------	--

6.2.8 DAMAGE TO COMPANY'S EQUIPMENT. The Applicant shall be responsible to ensure that the Company's distribution facilities once installed, are not damaged, destroyed, or otherwise disturbed during the construction of the project. This responsibility shall extend not only to those in his employ, but also to his subcontractors. Should damage occur, the Applicant shall be responsible for the full cost of repairs.

6.2.9 PAYMENT OF CHARGES. The Company shall not be obligated to install any facilities until payment of applicable charges, if any, has been completed.

6.3 UNDERGROUND DISTRIBUTION FACILITIES FOR  
NEW RESIDENTIAL SUBDIVISIONS

6.3.1 AVAILABILITY. After receipt of proper application and compliance by the Applicant with applicable Company rules and procedures, the Company will install underground distribution facilities to provide single phase service to new residential subdivisions of five (5) or more building lots.

6.3.2 CONTRIBUTION BY APPLICANT.

(a) Prior to such installations, the Applicant and the Company will enter into an agreement outlining the terms and conditions of installation, and the Applicant will be required to pay the Company in advance the entire cost as described below:

<u>Option</u>	<u>Low Density Subdivision (\$ per lot)</u>	<u>High Density Subdivision (\$ per lot)</u>
1. Gulf supplies and installs all primary, secondary, and service trench, duct, and cable.	<u>\$402498</u>	<u>\$524562</u>
2. Applicant installs primary and secondary trench and duct system. Gulf supplies primary and secondary duct and supplies and installs service duct. Gulf supplies and installs primary, secondary, and service cable.	<u>\$209307</u>	<u>\$384428</u>
3. Applicant supplies and installs primary and secondary trench and duct. Gulf supplies primary and secondary cable. Gulf supplies and installs service duct and cable.	<u>\$90181</u>	<u>\$289327</u>

All construction done by the Applicant must meet the Company's specifications. All installations must be approved by the Company's authorized representative.

(b) The Applicant is required to pay a charge per foot and a cost differential for transformers and services (see "Three Phase Lift Station" charts below) for three phase commercial loads requiring 120/240 volt open delta, 120/208 volt wye, or 277/480 volt wye service in new residential subdivisions for each three phase service. This average cost will be added to the advanced payment in 6.3.2(a) above.



Section No. IV  
~~Seventeenth~~Eighteenth Revised Sheet No. 4.26  
 Canceling ~~Sixteenth~~Seventeenth Revised Sheet No. 4.26

PAGE	EFFECTIVE DATE <b>June 18, 2015</b>
------	--

6.3.2 (continued)

**THREE PHASE LIFT STATION  
 COSTS TO PROVIDE 3 PH SVC TO LIFT STATION W/IN TYPICAL SUBDIVISION - OPTION 1**

**CUSTOMER REQUEST: 120/208 or 277/480**

MOTOR SIZE	AVAILABLE UNDERGROUND FACILITIES		
	SINGLE PHASE	TWO PHASES	THREE PHASES
< 5HP	\$ <del>21.85</del> <u>21.70</u> per ft plus 3ph padmount tx, pad, and ug service minus one oh transformer, cutout, arrester, and service	\$ <del>45.30</del> <u>15.18</u> per ft plus 3ph padmount tx, pad, and ug service minus one oh transformer, cutout, arrester, and service	\$0 cost per ft plus 3ph padmount tx, pad, and ug service minus one oh transformer, cutout, arrester, and service
5HP < X < 25HP	\$ <del>8.988</del> <u>8.88</u> per ft plus 3ph padmount tx, pad, and ug service minus 2 oh transformers, 2 cutouts, 2 arresters, and service	\$ <del>40.84</del> <u>10.80</u> per ft plus 3ph padmount tx, pad, and ug service minus 2 oh transformers, 2 cutouts, 2 arresters, and service	\$0 cost per ft plus 3ph padmount tx, pad, and ug service minus 2 oh transformers, 2 cutouts, 2 arresters, and service
> 25HP	\$ <del>4.504</del> <u>4.51</u> per ft plus 3ph padmount tx, pad, and ug service minus 3 oh transformers, 3 cutouts, 3 arresters, cluster mt, and service	\$ <del>2.422</del> <u>2.36</u> per ft plus 3ph padmount tx, pad, and ug service minus 3 oh transformers, 3 cutouts, 3 arresters, cluster mt, and service	\$0 cost per ft plus 3ph padmount tx, pad, and ug service minus 3 oh transformers, 3 cutouts, 3 arresters, cluster mt, and service

**CUSTOMER REQUEST: 120/240 OPEN DELTA**

MOTOR SIZE	AVAILABLE UNDERGROUND FACILITIES		
	SINGLE PHASE	TWO PHASES	THREE PHASES
< 5HP	\$ <del>14.04</del> <u>10.90</u> per ft plus 2 padmount tx, 2 pads, and ug service minus one oh transformer, cutout, arrester, and service	\$0 cost per ft plus 2 padmount tx, 2 pads, and ug service minus one oh transformer, cutout, arrester, and service	\$0 cost per ft plus 2 padmount tx, 2 pads, and ug service minus one oh transformer, cutout, arrester, and service
5HP < X < 25HP	\$ <del>2.082</del> <u>2.15</u> per ft plus 2 padmount tx, 2 pads, and ug service minus 2 oh transformers, 2 cutouts, 2 arresters, and service	\$0 cost per ft plus 2 padmount tx, 2 pads, and ug service minus 2 oh transformers, 2 cutouts, 2 arresters, and service	\$0 cost per ft plus 2 padmount tx, 2 pads, and ug service minus 2 oh transformers, 2 cutouts, 2 arresters, and service
> 25HP	\$ <del>2.082</del> <u>2.15</u> per ft plus 2 padmount tx, 2 pads, and ug service minus 2 oh transformers, 2 cutouts, 2 arresters, and service	\$0 cost per ft plus 2 padmount tx, 2 pads, and ug service minus 2 oh transformers, 2 cutouts, 2 arresters, and service	\$0 cost per ft plus 2 padmount tx, 2 pads, and ug service minus 2 oh transformers, 2 cutouts, 2 arresters, and service

**ISSUED BY: S. W. Connally, Jr.**



Section No. IV  
~~Fifth~~<sup>Sixth</sup> Revised Sheet No. 4.26.1  
 Canceling ~~Fourth~~<sup>Fifth</sup> Revised Sheet No. 4.26.1

PAGE	EFFECTIVE DATE <b>June 18, 2015</b>
------	--

6.3.2 (continued)

**THREE PHASE LIFT STATION  
 COSTS TO PROVIDE 3 PH SVC TO LIFT STATION W/IN TYPICAL SUBDIVISION - OPTION 2**

**CUSTOMER REQUEST: 120/208 or 277/480**

MOTOR SIZE	AVAILABLE UNDERGROUND FACILITIES		
	SINGLE PHASE	TWO PHASES	THREE PHASES
< 5HP	<del>\$21,142</del> <sup>0.98</sup> per ft plus 3ph padmount tx, pad, and ug service minus one oh transformer, cutout, arrester, and service	<del>\$14,901</del> <sup>4.79</sup> per ft plus 3ph padmount tx, pad, and ug service minus one oh transformer, cutout, arrester, and service	\$0 cost per ft plus 3ph padmount tx, pad, and ug service minus one oh transformer, cutout, arrester, and service
5HP < X < 25HP	<del>\$8,268</del> <sup>.16</sup> per ft plus 3ph padmount tx, pad, and ug service minus 2 oh transformers, 2 cutouts, 2 arresters, and service	<del>\$10,431</del> <sup>0.41</sup> per ft plus 3ph padmount tx, pad, and ug service minus 2 oh transformers, 2 cutouts, 2 arresters, and service	\$0 cost per ft plus 3ph padmount tx, pad, and ug service minus 2 oh transformers, 2 cutouts, 2 arresters, and service
> 25HP	<del>\$3,793</del> <sup>.78</sup> per ft plus 3ph padmount tx, pad, and ug service minus 3 oh transformers, 3 cutouts, 3 arresters, cluster mt, and service	<del>\$2,031</del> <sup>.97</sup> per ft plus 3ph padmount tx, pad, and ug service minus 3 oh transformers, 3 cutouts, 3 arresters, cluster mt, and service	\$0 cost per ft plus 3ph padmount tx, pad, and ug service minus 3 oh transformers, 3 cutouts, 3 arresters, cluster mt, and service

**CUSTOMER REQUEST: 120/240 OPEN DELTA**

MOTOR SIZE	AVAILABLE UNDERGROUND FACILITIES		
	SINGLE PHASE	TWO PHASES	THREE PHASES
< 5HP	<del>\$40,741</del> <sup>0.57</sup> per ft plus 2 padmount tx, 2 pads, and ug service minus one oh transformer, cutout, arrester, and service	\$0 cost per ft plus 2 padmount tx, 2 pads, and ug service minus one oh transformer, cutout, arrester, and service	\$0 cost per ft plus 2 padmount tx, 2 pads, and ug service minus one oh transformer, cutout, arrester, and service
5HP < X < 25HP	<del>\$1,751</del> <sup>.81</sup> per ft plus 2 padmount tx, 2 pads, and ug service minus 2 oh transformers, 2 cutouts, 2 arresters, and service	\$0 cost per ft plus 2 padmount tx, 2 pads, and ug service minus 2 oh transformers, 2 cutouts, 2 arresters, and service	\$0 cost per ft plus 2 padmount tx, 2 pads, and ug service minus 2 oh transformers, 2 cutouts, 2 arresters, and service
> 25HP	<del>\$1,751</del> <sup>.81</sup> per ft plus 2 padmount tx, 2 pads, and ug service minus 2 oh transformers, 2 cutouts, 2 arresters, and service	\$0 cost per ft plus 2 padmount tx, 2 pads, and ug service minus 2 oh transformers, 2 cutouts, 2 arresters, and service	\$0 cost per ft plus 2 padmount tx, 2 pads, and ug service minus 2 oh transformers, 2 cutouts, 2 arresters, and service

**ISSUED BY: S. W. Connally, Jr.**



Section No. IV  
~~Fifth~~<sup>Sixth</sup> Revised Sheet No. 4.26.2  
 Canceling ~~Fourth~~<sup>Fifth</sup> Revised Sheet No. 4.26.2

PAGE	EFFECTIVE DATE <b>June 18, 2015</b>
------	--

6.3.2 (continued)

**THREE PHASE LIFT STATION  
 COSTS TO PROVIDE 3 PH SVC TO LIFT STATION W/IN TYPICAL SUBDIVISION - OPTION 3**

**CUSTOMER REQUEST: 120/208 or 277/480**

MOTOR SIZE	AVAILABLE UNDERGROUND FACILITIES		
	SINGLE PHASE	TWO PHASES	THREE PHASES
< 5HP	<del>\$18.64</del> <sup>18.26</sup> per ft plus 3ph padmount tx, pad, and ug service minus one oh transformer, cutout, arrester, and service	<del>\$13.64</del> <sup>13.43</sup> per ft plus 3ph padmount tx, pad, and ug service minus one oh transformer, cutout, arrester, and service	\$0 cost per ft plus 3ph padmount tx, pad, and ug service minus one oh transformer, cutout, arrester, and service
5HP < X < 25HP	<del>\$5.735</del> <sup>5.44</sup> per ft plus 3ph padmount tx, pad, and ug service minus 2 oh transformers, 2 cutouts, 2 arresters, and service	<del>\$9.169</del> <sup>9.05</sup> per ft plus 3ph padmount tx, pad, and ug service minus 2 oh transformers, 2 cutouts, 2 arresters, and service	\$0 cost per ft plus 3ph padmount tx, pad, and ug service minus 2 oh transformers, 2 cutouts, 2 arresters, and service
> 25HP	<del>\$1.261</del> <sup>1.07</sup> per ft plus 3ph padmount tx, pad, and ug service minus 3 oh transformers, 3 cutouts, 3 arresters, cluster mt, and service	<del>\$0.770</del> <sup>0.61</sup> per ft plus 3ph padmount tx, pad, and ug service minus 3 oh transformers, 3 cutouts, 3 arresters, cluster mt, and service	\$0 cost per ft plus 3ph padmount tx, pad, and ug service minus 3 oh transformers, 3 cutouts, 3 arresters, cluster mt, and service

**CUSTOMER REQUEST: 120/240 OPEN DELTA**

MOTOR SIZE	AVAILABLE UNDERGROUND FACILITIES		
	SINGLE PHASE	TWO PHASES	THREE PHASES
< 5HP	<del>\$9.449</del> <sup>9.21</sup> per ft plus 2 padmount tx, 2 pads, and ug service minus one oh transformer, cutout, arrester, and service	\$0 cost per ft plus 2 padmount tx, 2 pads, and ug service minus one oh transformer, cutout, arrester, and service	\$0 cost per ft plus 2 padmount tx, 2 pads, and ug service minus one oh transformer, cutout, arrester, and service
5HP < X < 25HP	<del>\$0.490</del> <sup>0.46</sup> per ft plus 2 padmount tx, 2 pads, and ug service minus 2 oh transformers, 2 cutouts, 2 arresters, and service	\$0 cost per ft plus 2 padmount tx, 2 pads, and ug service minus 2 oh transformers, 2 cutouts, 2 arresters, and service	\$0 cost per ft plus 2 padmount tx, 2 pads, and ug service minus 2 oh transformers, 2 cutouts, 2 arresters, and service
> 25HP	<del>\$0.490</del> <sup>0.46</sup> per ft plus 2 padmount tx, 2 pads, and ug service minus 2 oh transformers, 2 cutouts, 2 arresters, and service	\$0 cost per ft plus 2 padmount tx, 2 pads, and ug service minus 2 oh transformers, 2 cutouts, 2 arresters, and service	\$0 cost per ft plus 2 padmount tx, 2 pads, and ug service minus 2 oh transformers, 2 cutouts, 2 arresters, and service

ISSUED BY: S. W. Connally, Jr.



Section No. IV  
~~Ninth~~<sup>Tenth</sup> Revised Sheet No. 4.28  
Canceling ~~Eighth~~<sup>Ninth</sup> Revised Sheet No. 4.28

PAGE	EFFECTIVE DATE
	<del>June 18, 2015</del>

### 6.5 OTHER UNDERGROUND DISTRIBUTION FACILITIES

6.5.1 APPLICABILITY. This subpart applies to requests for underground facilities addressing the conversion of existing overhead facilities. In order for the Company to take action pursuant to a request for conversion:

- (1) the conversion area must be at least two contiguous city blocks or 1000 feet in length;
- (2) all electric services to the real property on both sides of the existing overhead primary lines must be part of the conversion; and
- (3) all other existing overhead utility facilities (e.g. telephone, CATV, etc.) must also be converted to underground facilities.

6.5.2 NON-BINDING COST ESTIMATES. An Applicant may obtain a non-binding estimate of the charges the Applicant would be obligated to pay in order for the Company to provide underground distribution facilities. This non-binding estimate will be provided to the Applicant without any charge or fee upon completion of the Application for Underground Cost Estimate set forth in Section VII of this tariff, Standard Contract Forms, at Sheet No. 7.43.

6.5.3 BINDING COST ESTIMATES. An Applicant, upon payment of a non-refundable deposit and completion of the Application for Underground Cost Estimate set forth in Section VII of this tariff, Standard Contract Forms, at Sheet No. 7.43, may obtain an estimate of the charges for underground distribution facilities, which estimate the Company would be bound to honor as provided below. The deposit amount, which approximates the engineering costs for underground facilities associated with preparing the requested estimate, shall be calculated as follows:

<u>Conversion</u>	
Urban Commercial	<del>\$4,6405,227</del> per overhead primary mile
Urban Residential	<del>\$7,5548,510</del> per overhead primary mile
Rural Residential	<del>\$6,1306,905</del> per overhead primary mile
210 Lot Subdivision	<del>\$5,8146,550</del> per overhead primary mile
176 Lot Subdivision	<del>\$10,16611,452</del> per overhead primary mile



# Appendix B

**Gulf Power Company**

**Overhead/Underground Residential  
Differential Cost Data**

**Report to the**

**Florida Public Service Commission**

**March 31, 2017**

# Gulf Power Company

## Overhead/Underground Residential Differential Cost Data

### March 31, 2017

## Table of Contents

Section		
Typical 210 Lot Subdivision:	Intro Page	3
Typical 210 Lot Subdivision:	Overhead vs. Underground Summary Sheet - Cost Per Lot - Single Family Residence	4
Typical 210 Lot Subdivision:	Overhead Material and Labor Estimates - Cost Per Lot - Single Family Residence	5
Typical 210 Lot Subdivision:	Underground Material and Labor Estimates - Cost Per Lot - Single Family Residence	6
Typical 210 Lot Subdivision:	Underground Subdivision Drawing	7
Typical 210 Lot Subdivision:	Overhead Subdivision Drawing	8
Typical 176 Lot Subdivision	Intro Page	9
Typical 176 Lot Subdivision:	Overhead vs. Underground Summary Sheet - Cost Per Lot - Single Family Residence	10
Typical 176 Lot Subdivision:	Overhead Material and Labor Estimates - Cost Per Lot - Single Family Residence	11
Typical 176 Lot Subdivision:	Underground Material and Labor Estimates - Cost Per Lot - Single Family Residence	12
Typical 176 Lot Subdivision:	Overhead Subdivision Drawing	13
Typical 176 Lot Subdivision:	Underground Subdivision Drawing	14
Operating Expenses	Overhead Vs. Underground	15
Joint Trenching	Underground Residential Distribution	16
Year-End Customer Summary	Overhead Vs. Underground	17

Gulf Power Company Submits the  
Following Data On The 210 Lot  
Typical Subdivision For Information Purposes Only  
In Accordance With Rule 25-6.078

**Gulf Power Company**  
**Overhead VS Underground**  
**Summary Sheet**  
**Cost Per Lot**  
**210 Lot Single Family Residential**

**March 31, 2017**

Item	Overhead	Underground	Differential
Labor	\$ 1,119	\$ 1,489	\$ 370
Material	\$ 621	\$ 971	350
Sub Total	\$ 1,740	\$ 2,460	720
Operating Cost	638	416	(222)
Total	<b>2,378</b>	<b>2,876</b>	<b>\$ 498</b>

Gulf Power Company  
 Cost Per Lot  
 Overhead Material And Labor  
 210 Lot Single Family Residential

**March 31, 2017**

Item	Material (1)	Labor (4)	Total
Service (2)	\$ 56	\$ 55	\$ 111
Primary	\$ 27	\$ 33	\$ 60
Secondary	\$ 13	\$ 7	\$ 20
Initial Tree Trim	\$ -	\$ 148	\$ 148
Poles	\$ 134	\$ 197	\$ 331
Transformers (3)	\$ 342	\$ 207	\$ 549
Subtotal	\$ 572	\$ 647	\$ 1,219
Stores Handling (5)	\$ 49		\$ 49
Subtotal	\$ 621	\$ 647	\$ 1,268
Engineering (6)		\$ 472	\$ 472
Sub Total	\$ 621	\$ 1,119	\$ 1,740
Operating Expense (7)			\$ 638
Total			<b>\$ 2,378</b>

(1) Includes Sales Tax

(2) Includes Meter

(3) Includes Ground Rods, Arresters and Cutouts

(4) Includes Payroll Taxes, Benefits, and Transportation

(5) 17% of All Material (Less Meters and Transformers)

(6) 52% of All Material and Labor

(7) 14,685 Conductor Ft divided by 210 Lots times Total Overhead Lines  
 Operating Multiplier of 9.12182 which is calculated on page 15a.

Gulf Power Company  
 Cost Per Lot  
 Underground Material And Labor  
 210 Lot Single Family Residential

**March 31, 2017**

Item	Material (1)	Labor (4)	Total
Service (2)	\$ 140	\$ 206	\$ 346
Primary	\$ 183	\$ 144	327
Secondary	\$ 101	\$ 77	178
Transformers (3)	\$ 466	\$ 89	555
T&I 1 duct	\$ -	\$ 92	92
T&I 2 ducts	\$ -	\$ 29	29
T&I 3 ducts	\$ -	\$ 5	5
Service Trenching	\$ -	\$ 173	173
Subtotal	890	815	1,705
Stores Handling (5)	81		81
Subtotal	971	815	1,786
Engineering (6)		674	674
SubTotal	971	1,489	2,460
Operating Expense (7)			416
Total			<b>\$ 2,876</b>

(1) Includes Sales Tax

(2) Includes Meter

(3) Includes Ground Rods, Arresters and Cutouts

(4) Includes Payroll Taxes, Benefits, and Transportation

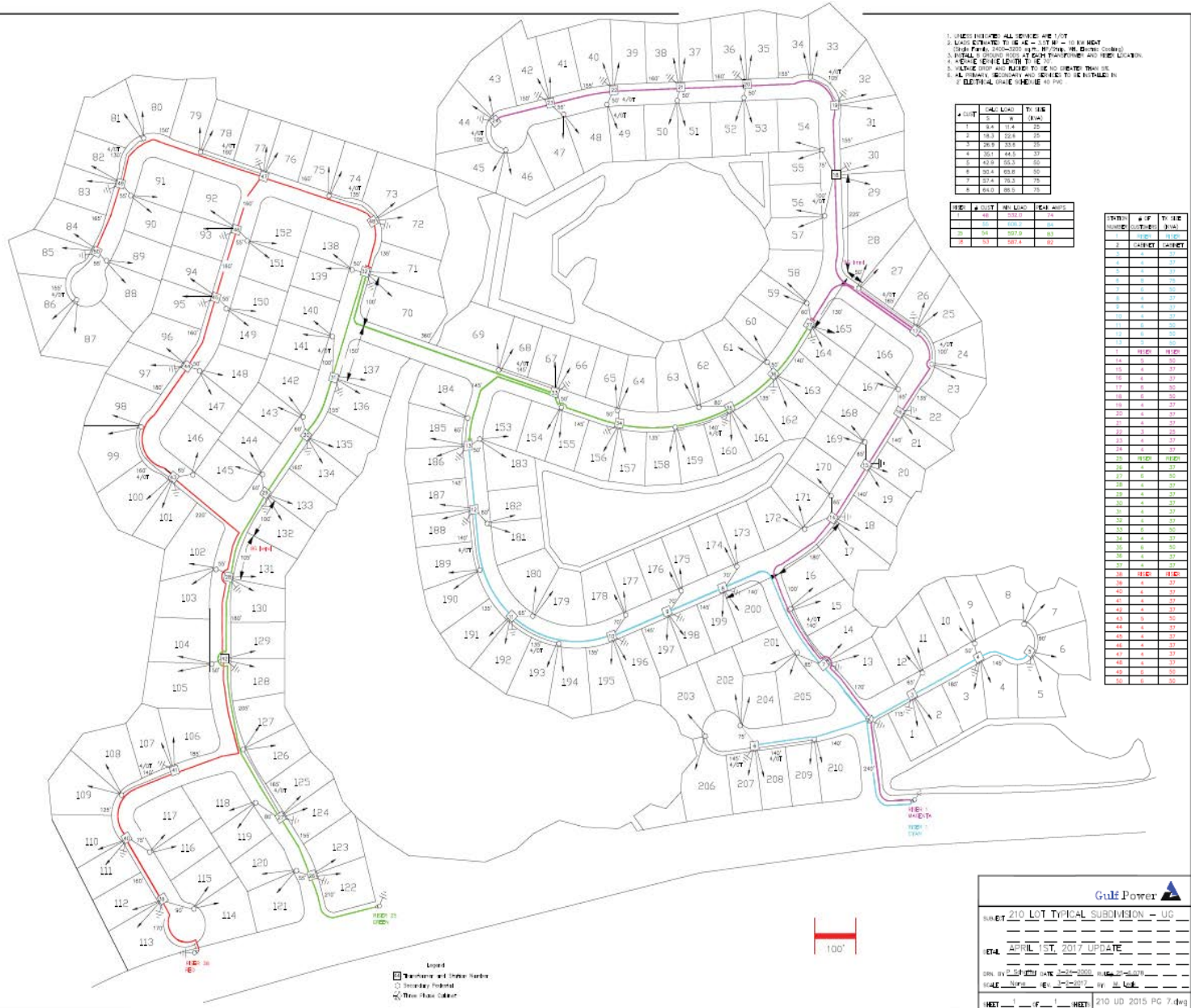
(5) 17% of All Material (Less Meters and Transformers)

(6) 52% of All Material and Labor

(7) 12,405 Conductor Ft divided by 210 Lots times Total Underground Lines  
 Operating Multiplier of 7.04325 which is calculated on page 15b.



Page 7



1. LINES INDICATE ALL SERVICES ARE 4" O.D.
2. LINES EXCEPT FOR GAS - 10" O.D.
3. ALL LINES TO BE INSTALLED AT EACH PROPERTY AND FEEB LOCKING.
4. ALL LINES TO BE INSTALLED AT EACH PROPERTY AND FEEB LOCKING.
5. ALL LINES TO BE INSTALLED AT EACH PROPERTY AND FEEB LOCKING.
6. ALL LINES TO BE INSTALLED AT EACH PROPERTY AND FEEB LOCKING.
7. ALL LINES TO BE INSTALLED AT EACH PROPERTY AND FEEB LOCKING.
8. ALL LINES TO BE INSTALLED AT EACH PROPERTY AND FEEB LOCKING.

LINE	SIZE	TYPE	DEPTH
1	4"	WATER	36"
2	4"	SEWER	36"
3	4"	GAS	36"
4	4"	WATER	36"
5	4"	SEWER	36"
6	4"	GAS	36"
7	4"	WATER	36"
8	4"	SEWER	36"

LINE	SIZE	TYPE	DEPTH
1	4"	WATER	36"
2	4"	SEWER	36"
3	4"	GAS	36"

LINE	SIZE	TYPE	DEPTH
1	4"	WATER	36"
2	4"	SEWER	36"
3	4"	GAS	36"
4	4"	WATER	36"
5	4"	SEWER	36"
6	4"	GAS	36"
7	4"	WATER	36"
8	4"	SEWER	36"
9	4"	GAS	36"
10	4"	WATER	36"
11	4"	SEWER	36"
12	4"	GAS	36"
13	4"	WATER	36"
14	4"	SEWER	36"
15	4"	GAS	36"
16	4"	WATER	36"
17	4"	SEWER	36"
18	4"	GAS	36"
19	4"	WATER	36"
20	4"	SEWER	36"
21	4"	GAS	36"
22	4"	WATER	36"
23	4"	SEWER	36"
24	4"	GAS	36"
25	4"	WATER	36"
26	4"	SEWER	36"
27	4"	GAS	36"
28	4"	WATER	36"
29	4"	SEWER	36"
30	4"	GAS	36"
31	4"	WATER	36"
32	4"	SEWER	36"
33	4"	GAS	36"
34	4"	WATER	36"
35	4"	SEWER	36"
36	4"	GAS	36"
37	4"	WATER	36"
38	4"	SEWER	36"
39	4"	GAS	36"
40	4"	WATER	36"
41	4"	SEWER	36"
42	4"	GAS	36"
43	4"	WATER	36"
44	4"	SEWER	36"
45	4"	GAS	36"
46	4"	WATER	36"
47	4"	SEWER	36"
48	4"	GAS	36"
49	4"	WATER	36"
50	4"	SEWER	36"
51	4"	GAS	36"
52	4"	WATER	36"
53	4"	SEWER	36"
54	4"	GAS	36"
55	4"	WATER	36"
56	4"	SEWER	36"
57	4"	GAS	36"
58	4"	WATER	36"
59	4"	SEWER	36"
60	4"	GAS	36"
61	4"	WATER	36"
62	4"	SEWER	36"
63	4"	GAS	36"
64	4"	WATER	36"
65	4"	SEWER	36"
66	4"	GAS	36"
67	4"	WATER	36"
68	4"	SEWER	36"
69	4"	GAS	36"
70	4"	WATER	36"
71	4"	SEWER	36"
72	4"	GAS	36"
73	4"	WATER	36"
74	4"	SEWER	36"
75	4"	GAS	36"
76	4"	WATER	36"
77	4"	SEWER	36"
78	4"	GAS	36"
79	4"	WATER	36"
80	4"	SEWER	36"
81	4"	GAS	36"
82	4"	WATER	36"
83	4"	SEWER	36"
84	4"	GAS	36"
85	4"	WATER	36"
86	4"	SEWER	36"
87	4"	GAS	36"
88	4"	WATER	36"
89	4"	SEWER	36"
90	4"	GAS	36"
91	4"	WATER	36"
92	4"	SEWER	36"
93	4"	GAS	36"
94	4"	WATER	36"
95	4"	SEWER	36"
96	4"	GAS	36"
97	4"	WATER	36"
98	4"	SEWER	36"
99	4"	GAS	36"
100	4"	WATER	36"
101	4"	SEWER	36"
102	4"	GAS	36"
103	4"	WATER	36"
104	4"	SEWER	36"
105	4"	GAS	36"
106	4"	WATER	36"
107	4"	SEWER	36"
108	4"	GAS	36"
109	4"	WATER	36"
110	4"	SEWER	36"
111	4"	GAS	36"
112	4"	WATER	36"
113	4"	SEWER	36"
114	4"	GAS	36"
115	4"	WATER	36"
116	4"	SEWER	36"
117	4"	GAS	36"
118	4"	WATER	36"
119	4"	SEWER	36"
120	4"	GAS	36"
121	4"	WATER	36"
122	4"	SEWER	36"
123	4"	GAS	36"
124	4"	WATER	36"
125	4"	SEWER	36"
126	4"	GAS	36"
127	4"	WATER	36"
128	4"	SEWER	36"
129	4"	GAS	36"
130	4"	WATER	36"
131	4"	SEWER	36"
132	4"	GAS	36"
133	4"	WATER	36"
134	4"	SEWER	36"
135	4"	GAS	36"
136	4"	WATER	36"
137	4"	SEWER	36"
138	4"	GAS	36"
139	4"	WATER	36"
140	4"	SEWER	36"
141	4"	GAS	36"
142	4"	WATER	36"
143	4"	SEWER	36"
144	4"	GAS	36"
145	4"	WATER	36"
146	4"	SEWER	36"
147	4"	GAS	36"
148	4"	WATER	36"
149	4"	SEWER	36"
150	4"	GAS	36"
151	4"	WATER	36"
152	4"	SEWER	36"
153	4"	GAS	36"
154	4"	WATER	36"
155	4"	SEWER	36"
156	4"	GAS	36"
157	4"	WATER	36"
158	4"	SEWER	36"
159	4"	GAS	36"
160	4"	WATER	36"
161	4"	SEWER	36"
162	4"	GAS	36"
163	4"	WATER	36"
164	4"	SEWER	36"
165	4"	GAS	36"
166	4"	WATER	36"
167	4"	SEWER	36"
168	4"	GAS	36"
169	4"	WATER	36"
170	4"	SEWER	36"
171	4"	GAS	36"
172	4"	WATER	36"
173	4"	SEWER	36"
174	4"	GAS	36"
175	4"	WATER	36"
176	4"	SEWER	36"
177	4"	GAS	36"
178	4"	WATER	36"
179	4"	SEWER	36"
180	4"	GAS	36"
181	4"	WATER	36"
182	4"	SEWER	36"
183	4"	GAS	36"
184	4"	WATER	36"
185	4"	SEWER	36"
186	4"	GAS	36"
187	4"	WATER	36"
188	4"	SEWER	36"
189	4"	GAS	36"
190	4"	WATER	36"
191	4"	SEWER	36"
192	4"	GAS	36"
193	4"	WATER	36"
194	4"	SEWER	36"
195	4"	GAS	36"
196	4"	WATER	36"
197	4"	SEWER	36"
198	4"	GAS	36"
199	4"	WATER	36"
200	4"	SEWER	36"
201	4"	GAS	36"
202	4"	WATER	36"
203	4"	SEWER	36"
204	4"	GAS	36"
205	4"	WATER	36"
206	4"	SEWER	36"
207	4"	GAS	36"
208	4"	WATER	36"
209	4"	SEWER	36"
210	4"	GAS	36"

Legend  
 [Symbol] Transfer of Other Utility  
 [Symbol] Secondary Input  
 [Symbol] New Gas Color



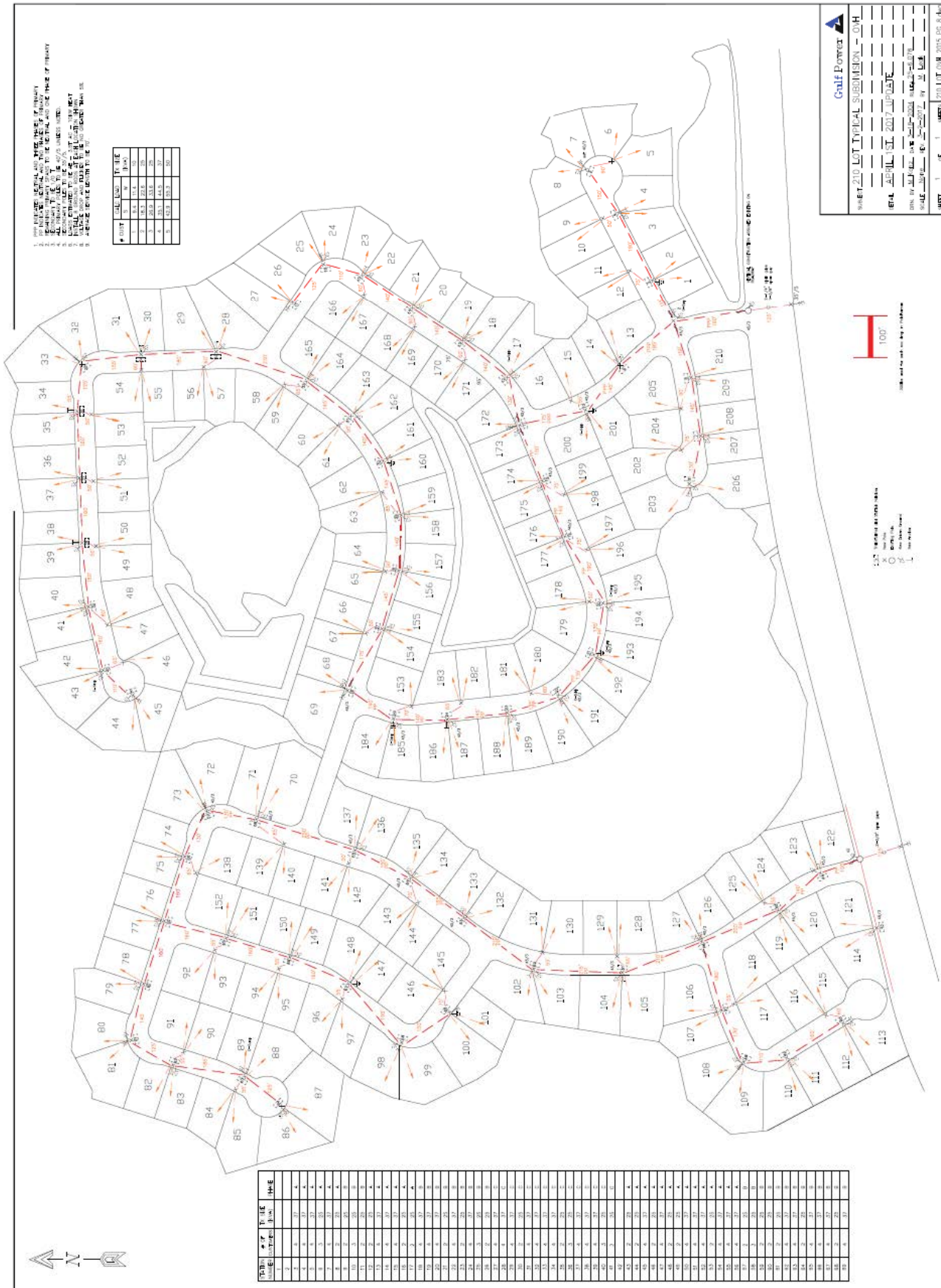
**Gulf Power**

SHEET 210 LOT TYPICAL SUBDIVISION - UG  
 DATE APRIL 1ST, 2017 UPDATE  
 REV 11/2015  
 SCALE 1" = 40' (SEE PLAN FOR ALL DIMENSIONS)  
 HET 1 (F) 1 HET 210 UD 2015 PG 7 (REV)



1. THE PLAN IS FOR INFORMATION ONLY AND DOES NOT CONSTITUTE A CONTRACT.
2. THE PLAN IS FOR INFORMATION ONLY AND DOES NOT CONSTITUTE A CONTRACT.
3. THE PLAN IS FOR INFORMATION ONLY AND DOES NOT CONSTITUTE A CONTRACT.
4. THE PLAN IS FOR INFORMATION ONLY AND DOES NOT CONSTITUTE A CONTRACT.
5. THE PLAN IS FOR INFORMATION ONLY AND DOES NOT CONSTITUTE A CONTRACT.
6. THE PLAN IS FOR INFORMATION ONLY AND DOES NOT CONSTITUTE A CONTRACT.
7. THE PLAN IS FOR INFORMATION ONLY AND DOES NOT CONSTITUTE A CONTRACT.
8. THE PLAN IS FOR INFORMATION ONLY AND DOES NOT CONSTITUTE A CONTRACT.
9. THE PLAN IS FOR INFORMATION ONLY AND DOES NOT CONSTITUTE A CONTRACT.
10. THE PLAN IS FOR INFORMATION ONLY AND DOES NOT CONSTITUTE A CONTRACT.

LOT	AREA	PERCENT	TYPE
1	1.1	1.1	1.1
2	1.1	1.1	1.1
3	1.1	1.1	1.1
4	1.1	1.1	1.1
5	1.1	1.1	1.1



LOT	AREA	PERCENT	TYPE
1	1.1	1.1	1.1
2	1.1	1.1	1.1
3	1.1	1.1	1.1
4	1.1	1.1	1.1
5	1.1	1.1	1.1
6	1.1	1.1	1.1
7	1.1	1.1	1.1
8	1.1	1.1	1.1
9	1.1	1.1	1.1
10	1.1	1.1	1.1
11	1.1	1.1	1.1
12	1.1	1.1	1.1
13	1.1	1.1	1.1
14	1.1	1.1	1.1
15	1.1	1.1	1.1
16	1.1	1.1	1.1
17	1.1	1.1	1.1
18	1.1	1.1	1.1
19	1.1	1.1	1.1
20	1.1	1.1	1.1
21	1.1	1.1	1.1
22	1.1	1.1	1.1
23	1.1	1.1	1.1
24	1.1	1.1	1.1
25	1.1	1.1	1.1
26	1.1	1.1	1.1
27	1.1	1.1	1.1
28	1.1	1.1	1.1
29	1.1	1.1	1.1
30	1.1	1.1	1.1
31	1.1	1.1	1.1
32	1.1	1.1	1.1
33	1.1	1.1	1.1
34	1.1	1.1	1.1
35	1.1	1.1	1.1
36	1.1	1.1	1.1
37	1.1	1.1	1.1
38	1.1	1.1	1.1
39	1.1	1.1	1.1
40	1.1	1.1	1.1
41	1.1	1.1	1.1
42	1.1	1.1	1.1
43	1.1	1.1	1.1
44	1.1	1.1	1.1
45	1.1	1.1	1.1
46	1.1	1.1	1.1
47	1.1	1.1	1.1
48	1.1	1.1	1.1
49	1.1	1.1	1.1
50	1.1	1.1	1.1
51	1.1	1.1	1.1
52	1.1	1.1	1.1
53	1.1	1.1	1.1
54	1.1	1.1	1.1
55	1.1	1.1	1.1
56	1.1	1.1	1.1
57	1.1	1.1	1.1
58	1.1	1.1	1.1
59	1.1	1.1	1.1
60	1.1	1.1	1.1
61	1.1	1.1	1.1
62	1.1	1.1	1.1
63	1.1	1.1	1.1
64	1.1	1.1	1.1
65	1.1	1.1	1.1
66	1.1	1.1	1.1
67	1.1	1.1	1.1
68	1.1	1.1	1.1
69	1.1	1.1	1.1
70	1.1	1.1	1.1
71	1.1	1.1	1.1
72	1.1	1.1	1.1
73	1.1	1.1	1.1
74	1.1	1.1	1.1
75	1.1	1.1	1.1
76	1.1	1.1	1.1
77	1.1	1.1	1.1
78	1.1	1.1	1.1
79	1.1	1.1	1.1
80	1.1	1.1	1.1
81	1.1	1.1	1.1
82	1.1	1.1	1.1
83	1.1	1.1	1.1
84	1.1	1.1	1.1
85	1.1	1.1	1.1
86	1.1	1.1	1.1
87	1.1	1.1	1.1
88	1.1	1.1	1.1
89	1.1	1.1	1.1
90	1.1	1.1	1.1
91	1.1	1.1	1.1
92	1.1	1.1	1.1
93	1.1	1.1	1.1
94	1.1	1.1	1.1
95	1.1	1.1	1.1
96	1.1	1.1	1.1
97	1.1	1.1	1.1
98	1.1	1.1	1.1
99	1.1	1.1	1.1
100	1.1	1.1	1.1
101	1.1	1.1	1.1
102	1.1	1.1	1.1
103	1.1	1.1	1.1
104	1.1	1.1	1.1
105	1.1	1.1	1.1
106	1.1	1.1	1.1
107	1.1	1.1	1.1
108	1.1	1.1	1.1
109	1.1	1.1	1.1
110	1.1	1.1	1.1
111	1.1	1.1	1.1
112	1.1	1.1	1.1
113	1.1	1.1	1.1
114	1.1	1.1	1.1
115	1.1	1.1	1.1
116	1.1	1.1	1.1
117	1.1	1.1	1.1
118	1.1	1.1	1.1
119	1.1	1.1	1.1
120	1.1	1.1	1.1
121	1.1	1.1	1.1
122	1.1	1.1	1.1
123	1.1	1.1	1.1
124	1.1	1.1	1.1
125	1.1	1.1	1.1
126	1.1	1.1	1.1
127	1.1	1.1	1.1
128	1.1	1.1	1.1
129	1.1	1.1	1.1
130	1.1	1.1	1.1
131	1.1	1.1	1.1
132	1.1	1.1	1.1
133	1.1	1.1	1.1
134	1.1	1.1	1.1
135	1.1	1.1	1.1
136	1.1	1.1	1.1
137	1.1	1.1	1.1
138	1.1	1.1	1.1
139	1.1	1.1	1.1
140	1.1	1.1	1.1
141	1.1	1.1	1.1
142	1.1	1.1	1.1
143	1.1	1.1	1.1
144	1.1	1.1	1.1
145	1.1	1.1	1.1
146	1.1	1.1	1.1
147	1.1	1.1	1.1
148	1.1	1.1	1.1
149	1.1	1.1	1.1
150	1.1	1.1	1.1
151	1.1	1.1	1.1
152	1.1	1.1	1.1
153	1.1	1.1	1.1
154	1.1	1.1	1.1
155	1.1	1.1	1.1
156	1.1	1.1	1.1
157	1.1	1.1	1.1
158	1.1	1.1	1.1
159	1.1	1.1	1.1
160	1.1	1.1	1.1
161	1.1	1.1	1.1
162	1.1	1.1	1.1
163	1.1	1.1	1.1
164	1.1	1.1	1.1
165	1.1	1.1	1.1
166	1.1	1.1	1.1
167	1.1	1.1	1.1
168	1.1	1.1	1.1
169	1.1	1.1	1.1
170	1.1	1.1	1.1
171	1.1	1.1	1.1
172	1.1	1.1	1.1
173	1.1	1.1	1.1
174	1.1	1.1	1.1
175	1.1	1.1	1.1
176	1.1	1.1	1.1
177	1.1	1.1	1.1
178	1.1	1.1	1.1
179	1.1	1.1	1.1
180	1.1	1.1	1.1
181	1.1	1.1	1.1
182	1.1	1.1	1.1
183	1.1	1.1	1.1
184	1.1	1.1	1.1
185	1.1	1.1	1.1
186	1.1	1.1	1.1
187	1.1	1.1	1.1
188	1.1	1.1	1.1
189	1.1	1.1	1.1
190	1.1	1.1	1.1
191	1.1	1.1	1.1
192	1.1	1.1	1.1
193	1.1	1.1	1.1
194	1.1	1.1	1.1
195	1.1	1.1	1.1
196	1.1	1.1	1.1
197	1.1	1.1	1.1
198	1.1	1.1	1.1
199	1.1	1.1	1.1
200	1.1	1.1	1.1
201	1.1	1.1	1.1
202	1.1	1.1	1.1
203	1.1	1.1	1.1
204	1.1	1.1	1.1
205	1.1	1.1	1.1
206	1.1	1.1	1.1
207	1.1	1.1	1.1
208	1.1	1.1	1.1
209	1.1	1.1	1.1
210	1.1	1.1	1.1

**Gulf Power**

NET 210 LOT TYPICAL SUBMISSION - 04H

ETAL AERIAL SET 2017 UPDATE

DATE: 11/14/17

SCALE: 1" = 100'

PROJECT: 210 LOT SUB 2015 PG 8 OF 8



- 1. 1" = 100'
- 2. 1" = 100'
- 3. 1" = 100'
- 4. 1" = 100'

Gulf Power Company Submits the  
Following Data On The 176 Lot  
Typical Subdivision For Information Purposes Only  
In Accordance With Rule 25-6.078

**Gulf Power Company**  
**Overhead VS Underground**  
**Summary Sheet**  
**Cost Per Lot**  
**176 Lot Single Family Residential**

**March 31, 2017**

Item	Overhead	Underground	Differential
Labor	\$ 844	\$ 1,235	\$ 391
Material	508	741	233
Sub Total	1,352	1,976	624
Operating Cost	323	261	(62)
Total	\$ 1,675	\$ 2,237	\$ 562

Gulf Power Company  
 Cost Per Lot  
 Overhead Material And Labor  
 176 Lot Single Family Residential

**March 31, 2017**

Item	Material (1)	Labor (4)	Total
Service (2)	\$ 41	\$ 42	\$ 83
Primary	13	19	32
Secondary	15	9	24
Initial Tree Trim	0	96	96
Poles	99	148	247
Transformers (3)	301	177	478
Subtotal	469	491	960
Stores Handling (5)	39		39
Subtotal	508	491	999
Engineering (6)		353	353
Sub Total	508	844	1,352
Operating Expense (7)			323
Total			<b>\$ 1,675</b>

(1) Includes Sales Tax

(2) Includes Meter

(3) Includes Ground Rods, Arresters and Cutouts

(4) Includes Payroll Taxes, Benefits, and Transportation

(5) 17% of All Material (Less Meters and Transformers)

(6) 52% of All Material and Labor

(7) 6,235 Conductor Ft divided by 176 Lots times Total Overhead Lines  
 Operating Multiplier of 9.12182 which is calculated on page 15a.

**Gulf Power Company**  
**Cost Per Lot**  
**Underground Material And Labor**  
**176 Lot Single Family Residential**

**March 31, 2017**

Item	Material (1)	Labor (4)	Total
Service (2)	\$ 108	\$ 184	\$ 292
Primary	113	91	204
Secondary	124	92	216
Transformers (3)	333	52	385
T&I 1 duct	0	50	50
T&I 2 ducts	0	34	34
T&I 3 ducts	0	3	3
T&I 4 ducts	0	1	1
Service Trenching	0	173	173
Subtotal	678	680	1,358
Stores Handling (5)	63		63
Subtotal	741	680	1,421
Engineering (6)		555	555
SubTotal	741	1,235	1,976
Operating Expense (7)			261
Total			<b>\$ 2,237</b>

(1) Includes Sales Tax

(2) Includes Meter

(3) Includes Ground Rods, Arresters and Cutouts

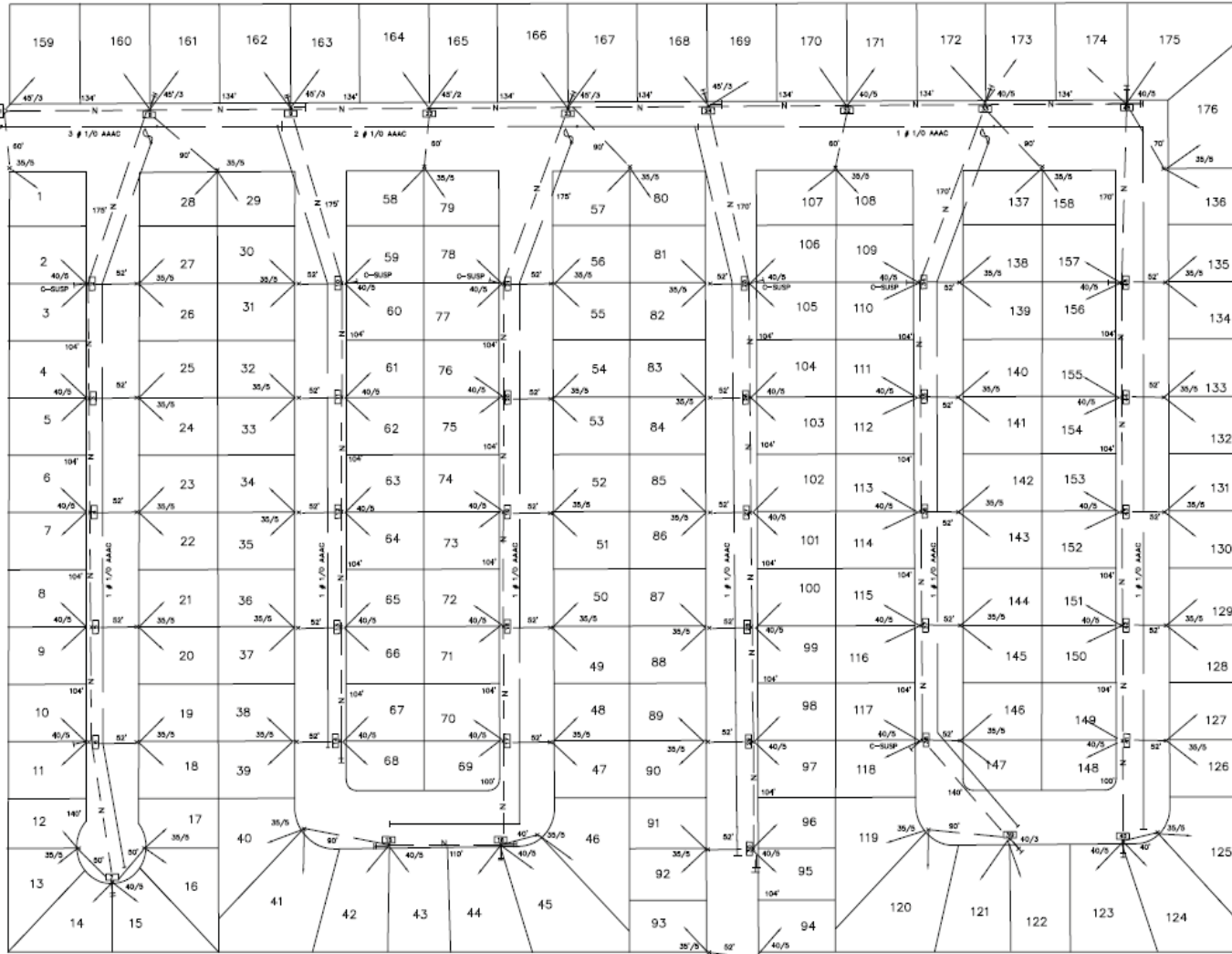
(4) Includes Payroll Taxes, Benefits, and Transportation

(5) 17% of All Material (Less Meters and Transformers)

(6) 52% of All Material and Labor

(7) 6,528 Conductor Ft divided by 176 Lots times Total Underground Lines.

Operating Multiplier of 7.04325 which is calculated on page 15b.



Station	Customers	Tx (kVA)
1	2	15
2	4	37.5
3	4	37.5
4	4	37.5
5	4	37.5
6	4	37.5
7	6	50
8	4	37.5
9	2	15
10	4	37.5
11	4	37.5
12	4	37.5
13	4	37.5
14	4	37.5
15	4	37.5
16	3	25
17	4	37.5
18	4	37.5
19	4	37.5
20	4	37.5
21	4	37.5
22	4	37.5
23	4	37.5
24	2	15
25	4	37.5
26	4	37.5
27	4	37.5
28	4	37.5
29	4	37.5
30	4	37.5
31	2	15
32	4	37.5
33	4	37.5
34	4	37.5
35	4	37.5
36	4	37.5
37	4	37.5
38	4	37.5
39	4	37.5
40	3	25
41	4	37.5
42	4	37.5
43	4	37.5
44	4	37.5
45	4	37.5
46	4	37.5

- LEGEND**
- TRANSFORMER TO BE INSTALLED
  - PRIMARY TO BE INSTALLED
  - SECONDARY TO BE INSTALLED
  - SERVICE WIRE TO BE INSTALLED
  - x- NEUTRAL TO BE INSTALLED
  - \*# FUSED OUTLET TO BE INSTALLED
  - x POLE TO BE INSTALLED
  - N-○ EXISTING POLE LINE

**Gulf Power**

Sheet: 176 LOT TYPICAL SUBDIVISION - QVH

DATE: APRIL 1ST, 2017 UPDATE

OWN: P. Sullivan DATE: 2-24-20 REV: 28-1028

SCALE: None REV: 2-2-2017 BY: M. IRAN

1 2 3 4 5 6 7 8 9 10 11 12 13 14 15 16 17 18 19 20 21 22 23 24 25 26 27 28 29 30 31 32 33 34 35 36 37 38 39 40 41 42 43 44 45 46 47 48 49 50 51 52 53 54 55 56 57 58 59 60 61 62 63 64 65 66 67 68 69 70 71 72 73 74 75 76 77 78 79 80 81 82 83 84 85 86 87 88 89 90 91 92 93 94 95 96 97 98 99 100 101 102 103 104 105 106 107 108 109 110 111 112 113 114 115 116 117 118 119 120 121 122 123 124 125 126 127 128 129 130 131 132 133 134 135 136 137 138 139 140 141 142 143 144 145 146 147 148 149 150 151 152 153 154 155 156 157 158 159 160 161 162 163 164 165 166 167 168 169 170 171 172 173 174 175 176

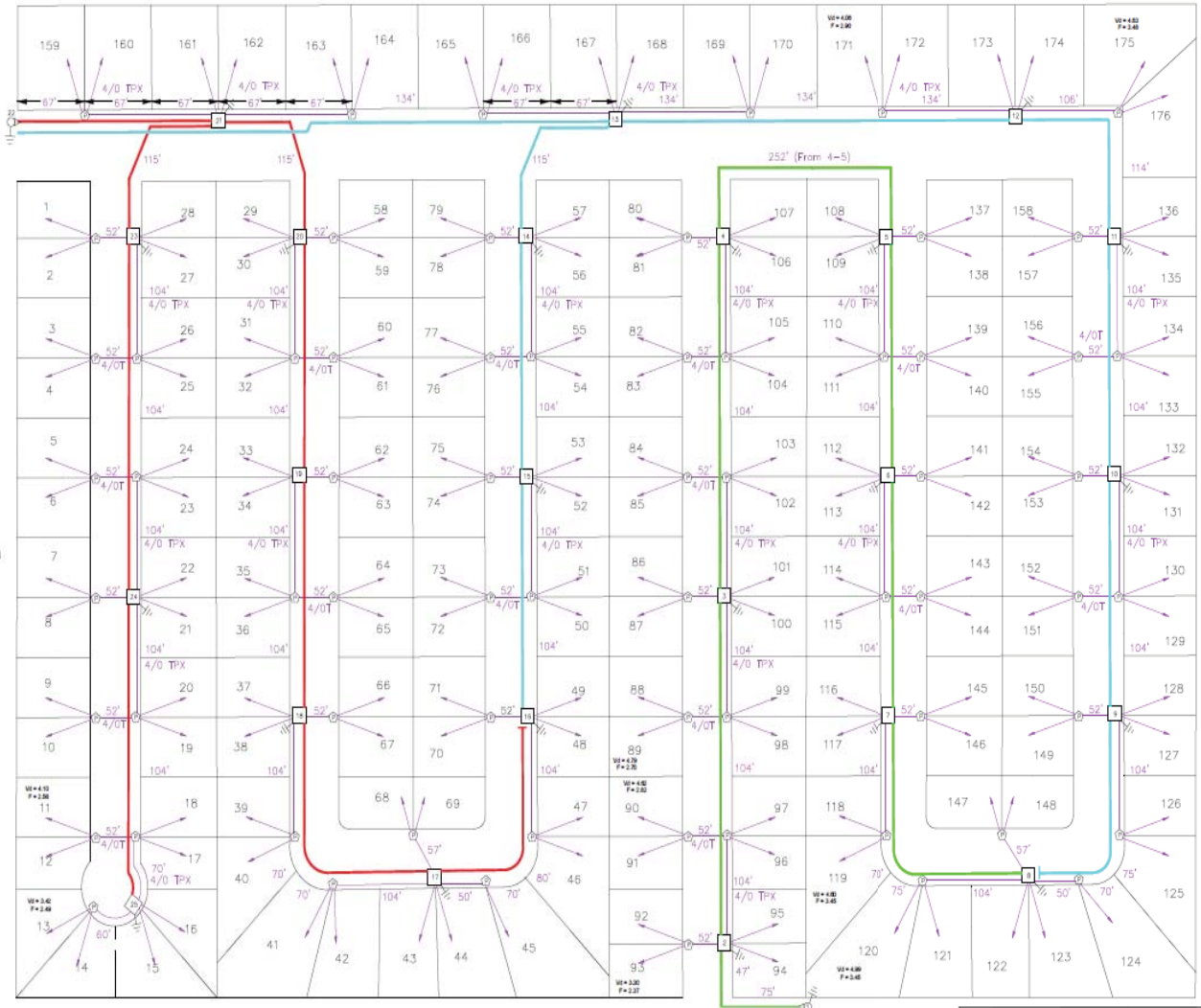
# CUST	CALC LOAD	TX SIZE
S	W	(KVA)
1	7.2	25
2	14.0	25
3	20.5	25
4	26.7	37.5
5	32.5	37.5
6	38.1	50
7	43.3	50
8	48.2	75
12	64.5	100

**NOTE:**

1. 8 DRIVEN GROUND RODS TO BE INSTALLED AT ALL TRANSFORMER AND RISER PILE LOCATIONS
2. ALL PRIMARY AND SECONDARY TO BE INSTALLED IN ELECTRICAL GRADE SCHEDULE 40 PVC
3. ALL SECONDARY IS 1/0 TRIPLE, UNLESS NOTED
4. ALL PRIMARY IS 1/0 ALUMINUM, 15 KV
5. 4E, 2.5 TON HP, 10 KW STRIP HEAT DRIVER (Single Family, LE 1800 sqft, HP/Strip, WH, Electric Cooling)
6. ALL SERVICES ARE 50' OF 1/0 TPX

ST #	# CUST	TX SIZE	PHASE
1	RISE		
2	8	75	C
3	12	100	C
4	8	75	C
5	8	75	C
6	8	75	C
7	6	50	C
8	7	50	C
9	6	50	B
10	6	75	B
11	8	75	B
12	6	50	B
13	8	50	B
14	8	75	B
15	8	75	B
16	6	50	B
17	7	50	A
18	6	50	A
19	8	75	A
20	8	75	A
21	6	50	A
22	RISE		
23	8	75	A
24	12	100	A
25	8	75	A

CABLE A  
CABLE B



**LEGEND**  
 PADMOUNT TRANSFORMER  
 SECONDARY PEDESTAL

CABLE C  
 1" = 50'

**Gulf Power**

PROJECT: 176 LOT TYPICAL SUBMERSION - JIG

DATE: April 11, 2017 UPDATE

DRN: BY: [ ] DATE: [ ] TIME: [ ]

SCALE: [ ] REV: [ ] BY: [ ]

NET: [ ] of [ ] NET: 176 LOT UD 2015 PG 14.dwg



**GULF POWER COMPANY**  
**Average Historical Operating Expenses (2012 - 2016)**

OPERATIONS & MAINTENANCE DESCRIPTION	OVERHEAD	UNDERGROUND	INDIRECT
ENGINEERING & SUPERVISION OVERHEADS			\$7,595,804
INSTALL & REMOVE OVERHEAD TRANSFORMERS	\$334,080		
OVERHEAD LINES - OTHER OPERATION EXPENSES	\$2,582,222		
INSTALL & REMOVE UNDERGROUND TRANSFORMERS		\$234,443	
UNDERGROUND LINES - OTHER OPERATION EXPENSES		\$755,787	
MISCELLANEOUS DISTRIBUTION EXPENSES			\$4,859,620
OVERHEAD LINE CLEARING	\$5,629,879		
OVERHEAD LINE MAINTENANCE	\$5,075,638		
POLE LINE INSPECTION/MAINTENANCE EXPENSES	\$357,891		
OVERHEAD STORM EXPENSE	\$1,965,842		
UNDERGROUND LINE MAINTENANCE		\$1,887,303	
UNDERGROUND STORM EXPENSE		\$53,843	
OVERHEAD LINE TRANSFORMER MAINTENANCE	\$787,241		
UNDERGROUND TRANSFORMER MAINTENANCE		\$108,248	
TOTAL =	\$16,732,793	\$3,039,624	\$12,455,424



## Overhead Lines Operating Cost Multiplier

### Assumptions

Revenue Requirements Life	32
O&M Expense Per Conductor Feet	\$0.31198
(\$16,732,793 / 53,634,768 = \$0.31198 Dollars/Ft)	
O&M Annual Escalation Percent	2.82%
Discount Rate	6.69%

### Calculation of Overhead Lines Operating Cost Multiplier

Cumulative PV	\$309,687,947
divided by:	
Year-End 2016 Overhead Conductor Feet	53,634,768
PV Operating Cost Factor	5.77401
Plus:	
In-Direct Operating Cost Multiplier	3.34780
Equals:	9.12182
Total Overhead Lines Operating Cost Multiplier	<b>9.12182</b>

## Underground Lines Operating Cost Multiplier

### Assumptions

Revenue Requirements Life	32
O&M Expense Per Conductor Feet	\$0.19967
(\$3,039,624 / 15,223,296 = \$0.19967 Dollars/Ft)	
O&M Annual Escalation Percent	2.82%
Discount Rate	6.69%

### Calculation of Underground Lines Operating Cost Multiplier

Cumulative PV	\$56,256,909
divided by:	
Year-End 2016 Underground Conductor Feet	15,223,296
PV Operating Cost Factor	3.69545
Plus:	
In-Direct Operating Cost Multiplier	3.34780
Equals:	7.04325
Total Underground Lines Operating Cost Multiplier	<b>7.04325</b>

## In-Direct Operating Cost Multiplier

### Assumptions

Revenue Requirements Life	32
O&M Expense Per Conductor Feet	\$0.18089
(\$12,455,424 / 68,858,064 = \$0.18089 Dollar/Ft)	
O&M Annual Escalation Percent	2.82%
Discount Rate	6.69%

### Calculation of In-Direct Operating Cost Multiplier

Cumulative PV	\$230,523,068
divided by:	
Year-End 2016 System Conductor Feet	68,858,064
PV Operating Cost Factor	<u>3.34780</u>

Gulf Power Company  
Joint Trenching  
UG Residential Distribution

Not Applicable for Gulf

**Gulf Power Company  
Year End Customers  
Overhead Versus Underground  
1972 - 2016**

	<u>Overhead</u>	<u>Underground</u>	<u>Total</u>
1972	150,536	6,088	156,624
1973	158,548	7,260	165,808
1974	163,310	8,432	171,742
1975	165,857	9,281	175,138
1976	170,138	10,589	180,727
1977	173,308	13,041	186,349
1978	177,427	14,124	191,551
1979	181,130	15,605	196,735
1980 (1)	181,937	23,756	205,693
1981	187,221	26,405	213,626
1982	191,692	29,481	221,173
1983	197,457	34,293	231,750
1984	203,256	42,061	245,317
1985	208,594	49,099	257,693
1986	212,725	54,005	266,730
1987	217,208	56,336	273,544
1988	220,563	59,184	279,747
1989	223,631	61,695	285,326
1990	226,880	63,569	290,449
1991	230,755	65,476	296,231
1992	236,862	68,178	305,040
1993	242,534	71,273	313,807
1994	247,576	74,070	321,646
1995	249,649	75,465	325,114
1996	254,725	80,107	334,832
1997	260,160	85,196	345,356
1998	264,133	89,839	353,972
1999	268,218	95,333	363,551
2000	271,620	98,499	370,119
2001	274,558	101,962	376,520
2002	278,223	105,700	383,923
2003	282,068	111,790	393,858
2004	287,366	119,415	406,781
2005	292,178	116,463	408,641
2006	293,224	125,668	418,892
2007	296,371	131,292	427,663
2008 (2)	262,587	165,342	427,929
2009	259,949	168,205	428,154
2010	264,033	166,625	430,658
2011	260,478	172,058	432,536
2012	263,375	171,196	434,571
2013	264,559	174,830	439,389
2014	265,388	178,659	444,047
2015	267,118	182,353	449,471
2016	269,026	186,389	455,415

(1) The underground customers increases substantially due to an error in recording overhead and underground accounts. The problem was discovered and corrected in November 1980.

(2) Implementation of Gulf's new distribution Geographic Information System (GIS) in 2008 in response to PSC Order 06-0351-PAA-EI enabled for a more accurate estimate of the number of customers taking service overhead versus underground. Underground customer count represents customers served on underground lateral lines as reported with the Annual Reliability and Storm Hardening Initiatives Report.

WORKPAPERS  
FOR  
UNDERGROUND  
SERVICE  
GULF POWER COMPANY

March 31, 2017

# Index to Worksheets

	Page
Summary of 210 Lot Subdivision Differential Cost	WP-3
210 Lot Typical Subdivision Base Price	WP-4
210 Lot Typical Subdivision Reconciliation Worksheet	WP-5
Summary of 176 Lot Subdivision Differential Cost	WP-6
176 Lot Typical Subdivision Base Price	WP-7
176 Lot Typical Subdivision Reconciliation Worksheet	WP-8

Typical Subdivision  
Summary of 210 Lot Subdivision  
Differential Cost

(1)	(2)	(3)	(4)	(5)	(6)	(7)	(8)
Option	Total URD Cost Per URD Lot (\$) 210-Lot	Credits for Applicants Doing & Supplying Work	Credited URD Cost per Lot (\$) 210-LOT	Total URD Cost (\$) 210-LOT	Total Overhead Cost Per OH Lot (\$) 210-Lot	Total OH Cost (\$) 210-LOT	Differential Cost per Lot (\$) 210-LOT
1	\$2,876	\$0	\$2,876	\$603,960	\$2,378	\$499,380	\$498
2	\$2,876	\$191	\$2,685	\$563,894	\$2,378	\$499,380	\$307
3	\$2,876	\$317	\$2,559	\$537,434	\$2,378	\$499,380	\$181

Column:

- (1) Customer's choice of construction method
- (2) URD cost per lot as shown on Page 4
- (3) Credit to Applicant for doing a portion of the installation - see WP-4
- (4) Column 2 minus column 3
- (5) Column 4 multiplied by number of lots
- (6) OH cost per lot as shown on Page 4
- (7) Column 6 multiplied by number of lots
- (8) Column 4 minus column 6

Option	Digs Pri and Sec Trench	Installs Pri and Sec Duct	Provides Pri and Sec Duct	Digs Service Trench	Installs Service Duct	Installs Service Duct
1	Gulf	Gulf	Gulf	Gulf	Gulf	Gulf
2	Applicant	Applicant	Gulf	Gulf	Gulf	Gulf
3	Applicant	Applicant	Applicant	Gulf	Gulf	Gulf



Typical Subdivision  
Developer Options  
210 Lot Subdivision

Option	Digs Pri and Sec Trench	Installs Pri and Sec Duct	Provides Pri and Sec Duct	Digs Service Trench	Installs Service Duct	Provides Service Duct
1	Gulf	Gulf	Gulf	Gulf	Gulf	Gulf
2	Applicant	Applicant	Gulf	Gulf	Gulf	Gulf
3	Applicant	Applicant	Applicant	Gulf	Gulf	Gulf

Activity	Description	\$ COST/LOT 210-LOT	Total Cost (\$) 210 - Lot
A	Applicant trenches & installs primary & sec. duct	\$191	\$40,066
B	Applicant supplies primary and secondary duct	\$126	\$26,460
	Total	\$317	\$66,526

Option	Activities Performed by the Applicant	Price / Lot Reduction (\$) 210 - Lot	Total Price Reduction (\$) 210 - Lot
1	None	\$0	\$0
2	A	\$191	\$40,066
3	A+B	\$317	\$66,526

**Reconciliation between Underground Material and Labor  
210 Lot Single Family Residential and Breakdown of Credits Worksheet**

WP-5

	Service		Primary		Secondary		Transformers		Trench &	Trench &	Trench &	Trench &	Service	Stores	Total	Activity Title (2)	
	Material	Labor	Material	Labor	Material	Labor	Material	Labor	Inst. 1 Duct Labor	Inst. 2 Duct Labor	Inst. 3 Duct Labor	Inst. 4 Duct Labor	Trenching Labor	Handling			Engineering
Meters and Transformers	0	12					466	89						9	45	\$621	
Cable - Primary & Secondary			135	144	78	77								37	245	\$716	
Cable - Services	72	194												12	145	\$423	
Trench Primary And Secondary									92	29	5	0			65	\$191	A
Trench Service Duct - Pri and Secondary													173		90	\$263	
Material			48		23									12		\$83	B
Labor				0		0									43	\$43	B
Duct Service Material	68													11		\$79	
Labor		0													41	\$41	
<b>Total (1)</b>	<b>\$140</b>	<b>\$206</b>	<b>\$183</b>	<b>\$144</b>	<b>\$101</b>	<b>\$77</b>	<b>\$466</b>	<b>\$89</b>	<b>\$92</b>	<b>\$29</b>	<b>\$5</b>	<b>\$0</b>	<b>\$173</b>	<b>\$81</b>	<b>\$674</b>	<b>\$2,460</b>	

Notes;  
(1) Ties to Page 6.  
(2) Ties to Page WP-4.

Activity A Total = \$ 191  
Activity B Total = \$ 126

Typical Subdivision  
Summary of 176 Lot Subdivision  
Differential Cost

(1) Option	(2) Total URD Cost Per URD Lot (\$) 176-Lot	(3) Credits for Applicants Doing & Supplying Work	(4) Credited URD Cost per Lot (\$) 176-LOT	(5) Total URD Cost (\$) 176-LOT	(6) Total Overhead Cost Per OH Lot (\$) 176-Lot	(7) Total OH Cost (\$) 176-LOT	(8) Differential Cost per Lot (\$) 176-LOT
1	\$2,237	\$0	\$2,237	\$393,712	\$1,675	\$294,800	\$562
2	\$2,237	\$134	\$2,103	\$370,128	\$1,675	\$294,800	\$428
3	\$2,237	\$235	\$2,002	\$352,352	\$1,675	\$294,800	\$327

Column:

- (1) Customer's choice of construction method
- (2) URD cost per lot as shown on Page 10
- (3) Credit to Applicant for doing a portion of the installation - see WP-7
- (4) Column 2 minus column 3
- (5) Column 4 multiplied by number of lots
- (6) OH cost per lot as shown on Page 10
- (7) Column 6 multiplied by number of lots
- (8) Column 4 minus column 6

Option	Digs Pri and Sec Trench	Installs Pri and Sec Duct	Provides Pri and Sec Duct	Digs Service Trench	Installs Service Duct	Installs Service Duct
1	Gulf	Gulf	Gulf	Gulf	Gulf	Gulf
2	Applicant	Applicant	Gulf	Gulf	Gulf	Gulf
3	Applicant	Applicant	Applicant	Gulf	Gulf	Gulf

Typical Subdivision  
Developer Options  
176 Lot Subdivision

Option	Digs Pri and Sec Trench	Installs Pri and Sec Duct	Provides Pri and Sec Duct	Digs Service Trench	Installs Service Duct	Provides Service Duct
1	Gulf	Gulf	Gulf	Gulf	Gulf	Gulf
2	Applicant	Applicant	Gulf	Gulf	Gulf	Gulf
3	Applicant	Applicant	Applicant	Gulf	Gulf	Gulf

Activity	Description	\$ COST/LOT 176-LOT	Total Cost (\$) 176 - Lot
A	Applicant trenches & installs primary & sec. duct	\$134	\$23,584
B	Applicant supplies primary and secondary duct	\$101	\$17,776
Total		\$235	\$41,360

Option	Activities Performed by the Applicant	Price / Lot Reduction (\$) 176 - Lot	Total Price Reduction (\$) 176 - Lot
1	None	\$0	\$0
2	A	\$134	\$23,584
3	A+B	\$235	\$41,360

**Reconciliation between Underground Material and Labor  
176 Lot Single Family Residential and Breakdown of Credits Worksheet**

	Service		Primary		Secondary		Transformers		Trench & Inst. 1 Duct	Trench & Inst. 2 Duct	Trench & Inst. 3 Duct	Trench & Inst. 4 Duct	Service Trenching	Stores Handling	Engineering	Total	Activity Title (2)
	Material	Labor	Material	Labor	Material	Labor	Material	Labor	Labor	Labor	Labor	Labor	Labor				
Meters and Transformers	0	12					333	52						4	24	\$425	
Cable - Primary & Secondary			84	91	97	92								31	205	\$600	
Cable - Services	55	172												9	123	\$359	
Trench Primary And Secondary									50	34	3	1			46	\$134	A
Trench Service Duct - Pri and Secondary													173		90	\$263	
Material			29		27									10		\$66	B
Labor				0		0									35	\$35	B
Duct Service Material	53													9		\$62	
Labor		0													32	\$32	
<b>Total (1)</b>	<b>\$108</b>	<b>\$184</b>	<b>\$113</b>	<b>\$91</b>	<b>\$124</b>	<b>\$92</b>	<b>\$333</b>	<b>\$52</b>	<b>\$50</b>	<b>\$34</b>	<b>\$3</b>	<b>\$1</b>	<b>\$173</b>	<b>\$63</b>	<b>\$555</b>	<b>\$1,976</b>	

Notes;  
(1) Ties to Page 12.  
(2) Ties to Page WP-7.

Activity A Total = \$ 134  
Activity B Total = \$ 101

WP-8