

Document Path: R:\Projects\GIS\Projects\Florida_Power_&_Light\Turkey_Point\Deliverables\2017_SAR\Figure1B_SiteandVicinity.mxd

AECOM
J. Mingus - Tallahassee

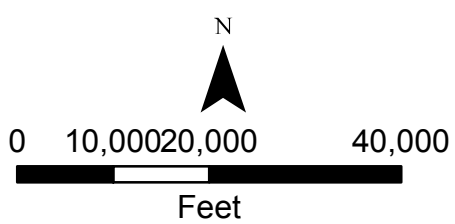
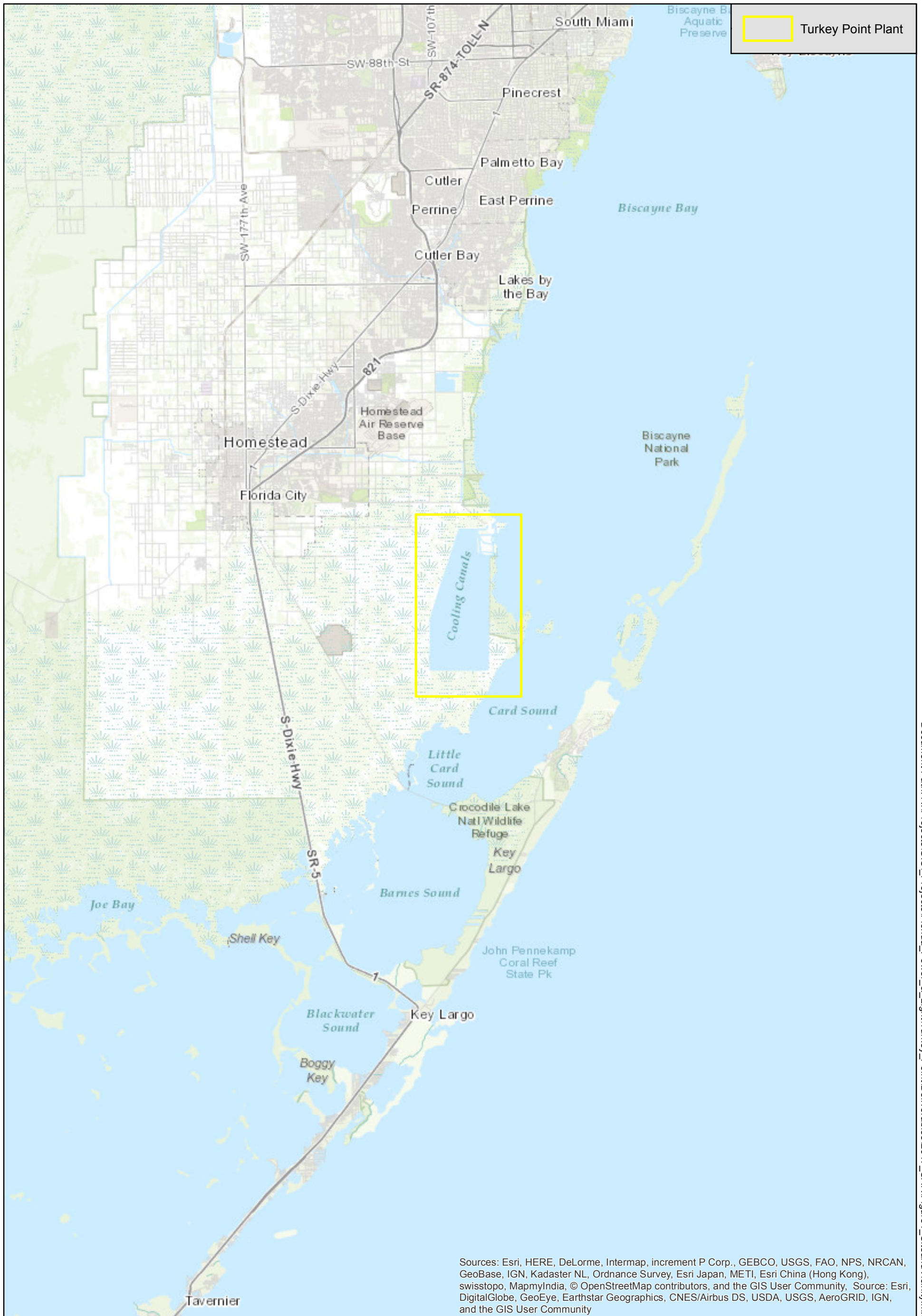
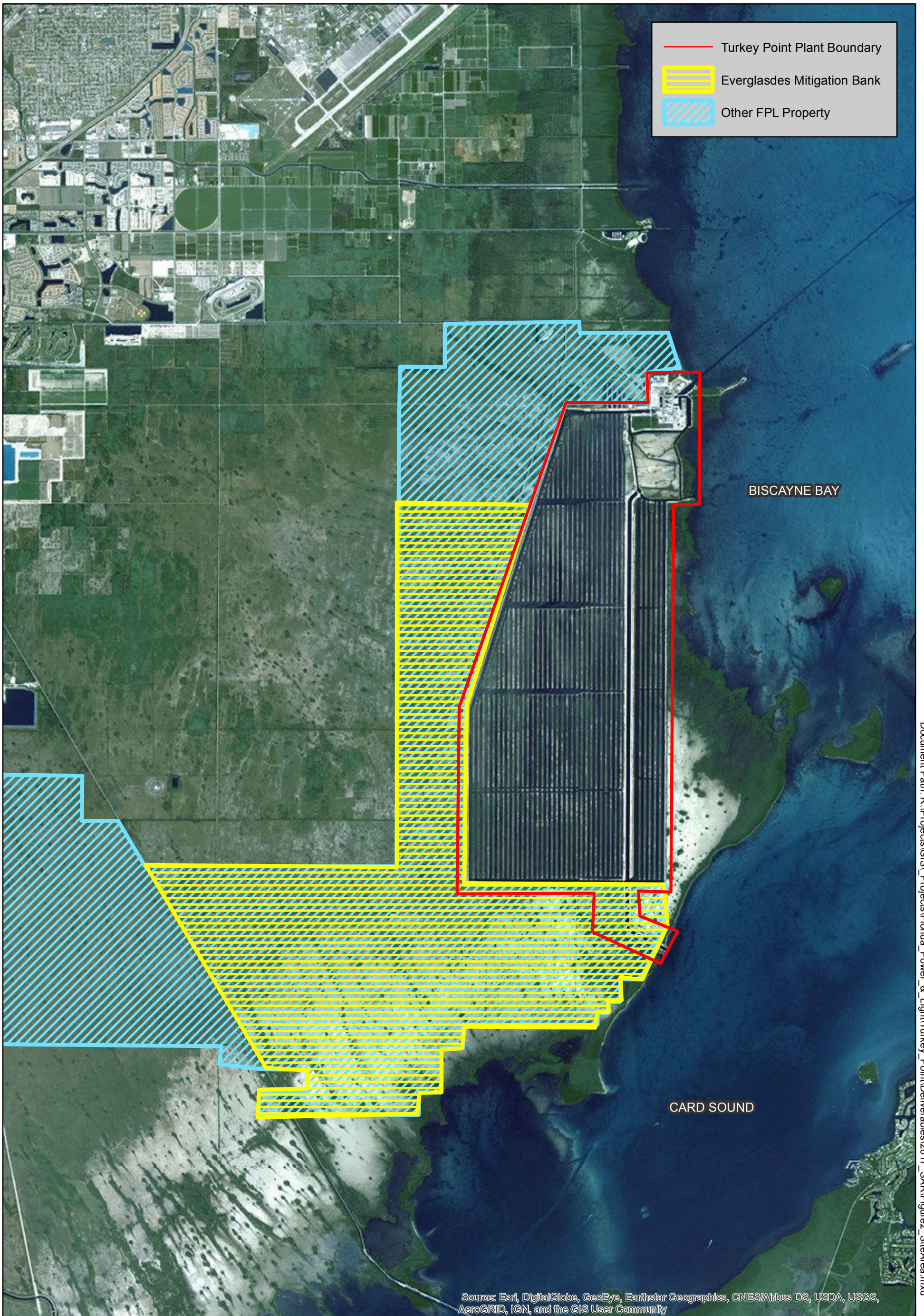


Figure 1A
Site and Vicinity
Florida Power & Light Company
Turkey Point Plant



Document Path: R:\Projects\GIS\Projects\Florida_Power_& Light\Turkey_Point\Deliverables\2017_SARR\Figure1_SiteandVicinity.mxd



Document Path: R:\Projects\GIS\Projects\Florida_Power_&_Light\Turkey_Point\Deliverables\2017_SARR\Figure2_SiteArea.mxd

AECOM

J. Mingus - Tallahassee

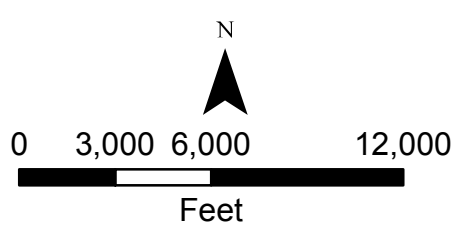


Figure 2
Site Area
Florida Power & Light Company
Turkey Point Plant



Service Layer Credits: Source: Esri, DigitalGlobe, GeoEye, Earthstar Geographics, CNES/Airbus DS, USDA, USGS, AeroGRID, IGN, and the GIS User Community, Google Earth 03-31-2010

Document Path: R:\Projects\GIS\Projects\Florida_Power_& Light\Turkey_Point\Deliverables\2017_SAR\Figure3A_SamplePoints.mxd



Document Path: R:\Projects\GIS\Projects\Florida_Power_ & Light\Turkey_Point\Deliverables\2017_SAR\GroundWater_ammonia.mxd



J. Mingus - Tallahassee

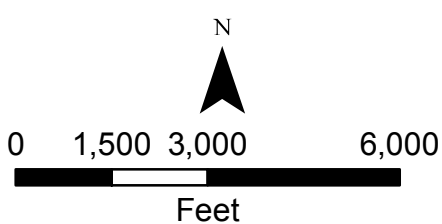


Figure 4
 Ammonia as N in
 G-III Aquifer Groundwater Samples
 (milligrams per liter - mg/L)
 Florida Power & Light Company
 Turkey Point Plant



Biscayne Bay

Note: Samples were collected from three depth intervals if water was greater than five feet deep. Otherwise only one sample was collected.

Sample ID		
Interval of Water Sample Collected	H	High Tide
	L	Low Tide

TPBBSW-6		
Shallow	H	0.07
	L	0.06
Middle	H	0.08
	L	0.06
Bottom	H	0.14
	L	0.16

TPBBSW-10		
Shallow	H	0.04
	L	0.06

TPBBSW-PTB1		
Shallow	H	0.07
	L	0.05

TPBBSW-7Tt		
Bottom	H	0.06
	L	0.04

TPBBSW-14		
Shallow	H	0.03
	L	0.03
Middle	H	0.03
	L	0.03
Bottom	H	0.06
	L	0.03

TPBBSW-4		
Shallow	H	0.03
	L	0.03
Middle	H	0.03
	L	0.03
Bottom	H	0.03
	L	0.03

BISCAYNE BAY

Source: Esri, DigitalGlobe, GeoEye, Earthstar Geographics, CNES/Airbus DS, USDA, USGS, AeroGRID, IGN, and the GIS User Community



J. Mingus - Tallahassee

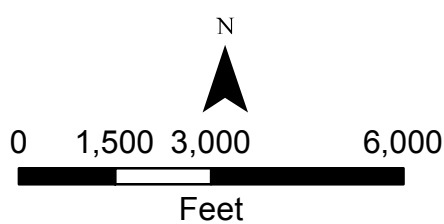


Figure 5
Ammonia as N in
Biscayne Bay Samples
(milligrams per liter - mg/L)
Florida Power & Light Company
Turkey Point Plant

Document Path: R:\Projects\GIS\Projects\Florida_Power & Light\Turkey_Point\Deliverables\2017_SAR\BiscayneBay_ammonia.mxd

■ Dead-End Canal

Note: Samples were collected from three depth intervals if water was greater than five feet deep. Otherwise only one sample was collected.

Sample ID		
Interval of Water Sample Collected	H	High Tide
	L	Low Tide

TPBBSW-PTB2		
Shallow	H	0.026
	L	0.0399
Middle	H	0.168
	L	0.0682
Bottom	H	1.51
	L	0.519

TPBBSW-PTB2		
Shallow	H	0.026
	L	0.0385
Middle	H	0.142
	L	0.146
Bottom	H	0.0361
	L	0.123

TPBBSW-8		
Shallow	H	0.147
	L	0.181
Middle	H	0.132
	L	0.203
Bottom	H	0.367
	L	5.9

TPBBSW-7B		
Shallow	H	0.19
	L	0.06
Middle	H	0.16
	L	1.4
Bottom	H	1.98
	L	1.93

TPBBSW-7T		
Shallow	H	0.05
	L	0.04
Middle	H	0.08
	L	0.04
Bottom	H	0.06
	L	0.16

TPBBSW-7M		
Shallow	H	0.12
	L	0.06
Middle	H	0.10
	L	1.84
Bottom	H	2.43
	L	1.83

BISCAYNE BAY

Shallow	H	0.08
	L	0.05
Middle	H	0.09
	L	0.05
Bottom	H	0.91
	L	0.96

TPBBCSC-B

Shallow	H	0.03
	L	0.04
Middle	H	0.10
	L	0.07
Bottom	H	1.71
	L	0.80

TPBBCSC-Mid

Shallow	H	0.03
	L	0.17
Middle	H	0.04
	L	0.08
Bottom	H	0.03
	L	0.05

TPBBS20-Mid

Shallow	H	0.03
	L	0.06
Middle	H	0.07
	L	0.06
Bottom	H	0.11
	L	0.07

TPBBCSC-M

Shallow	H	0.04
	L	0.04
Middle	H	0.03
	L	0.03
Bottom	H	0.04
	L	0.04

TPBBS20-M

S20Get-Mid	
Top	0.29
Middle	0.12
Bottom	0.14

S20Get-CCS	
Top	0.33
Middle	0.12
Bottom	6.72

SDC-East	
Top	0.04
Middle	0.07
Bottom	0.03

S20Weir-Down	
Bottom	H 0.48
	L 0.31

TPBBS20-B		
Shallow	H	0.04
	L	0.08
Middle	H	0.04
	L	0.10
Bottom	H	0.03
	L	0.11

S20Weir-Up	
Top	0.08
Middle	0.09
Bottom	0.06

Top	0.09
Middle	0.15
Bottom	31.00

SDS-SWCCS

TPSWC-8		
Shallow	H	0.07
	L	0.20
Middle	H	0.15
	L	0.23
Bottom	H	8.03
	L	8.07

TPSWC-7		
Shallow	H	0.06
	L	0.06
Middle	H	0.05
	L	0.10
Bottom	H	7.55
	L	3.40

Source: Esri, DigitalGlobe, GeoEye, Earthstar Geographics, CNES/Airbus DS, USDA, USGS, AeroGRID, IGN, and the GIS User Community



J. Mingus - Tallahassee

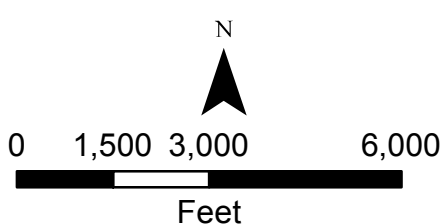


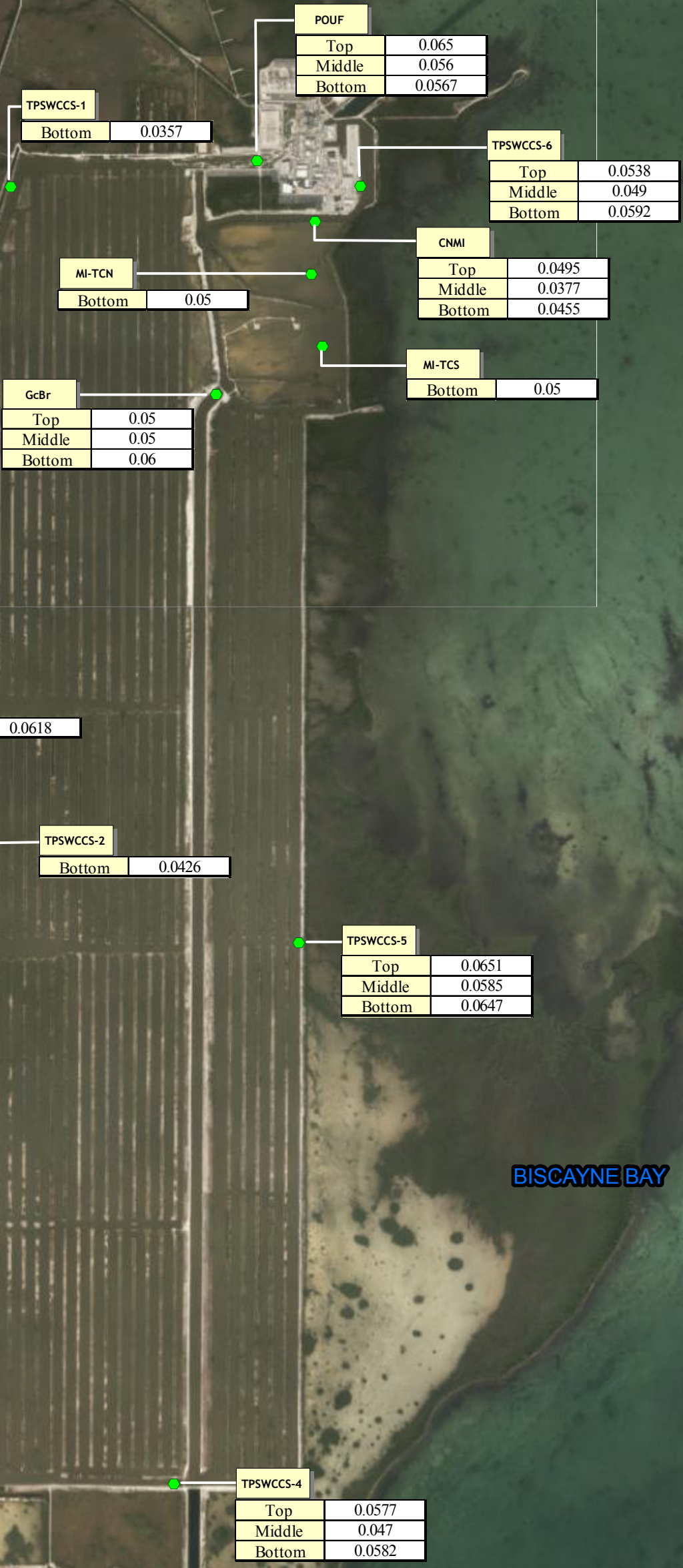
Figure 6
Ammonia as N in
Dead-End Canal Samples
(milligrams per liter - mg/L)
Florida Power & Light Company
Turkey Point Plant

Document Path: R:\Projects\GIS\Projects\Florida_Power & Light\Turkey_Point\Deliverables\2017_SAR\Dead_end_canal.mxd

● Canal Cooling System

Note: Samples were collected from three depth intervals if water was greater than five feet deep. Otherwise only one sample was collected.

Sample ID		
Interval of Water Sample Collected	H	High Tide
	L	Low Tide



BISCAYNE BAY

Source: Esri, DigitalGlobe, GeoEye, Earthstar Geographics, CNES/Airbus DS, USDA, USGS, AeroGRID, IGN, and the GIS User Community

Document Path: R:\Projects\GIS\Projects\Florida_Power & Light\Turkey_Point\Deliverables\2017_SAR\CCS_ammonia.mxd

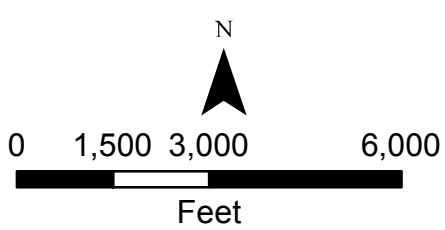


Figure 7
Ammonia as N in
Cooling Canal System (CCS) Samples
(milligrams per liter - mg/L)
Florida Power & Light Company
Turkey Point Plant



