

**WITNESS: CHARLES R. ROTE**

**REVISED**

**GENERATING PERFORMANCE INCENTIVE FACTOR**

**JANUARY THROUGH DECEMBER, 2017**

**AUGUST 24, 2017**

**CRR-3**

**DOCKET NO. 20170001-EI**

**FPL Witness: Charles R. Rote**

**Exhibit No.:** \_\_\_\_\_

**Pages 1 - 34**

**EXHIBIT INDEX****FLORIDA POWER & LIGHT COMPANY****JANUARY THROUGH DECEMBER, 2017**

<b><u>EXHIBIT</u></b>	<b><u>PAGE NUMBER</u></b>	<b><u>TITLE</u></b>
CRR-3	7.201.001	Exhibit Index
	7.201.002	Projected System Generation
	7.201.003	Units Used to Determine GPIF
	7.201.004	GPIF Reward/Penalty Table (Estimated)
	7.201.005	GPIF Calculation of Maximum Allowed Incentive Dollars (Estimated)
	7.201.006 and 7.201.007	GPIF Target and Range Summary
	7.201.008	GPIF Projected Unit Heat Rate Equations
	7.201.009	Derivation of Weighting Factors
	7.201.010 - 7.201.021	Estimated Unit Performance Data
	7.201.022 - 7.201.033	Unit FOF and MOF vs Time Graphs
	7.201.034	Planned Outages Schedule (Estimated)

## Projected System Generation January Through December, 2017

<u>Name</u>	<u>Capacity (MW)</u>	<u>Service Hours</u>	<u>Net Output MWH</u>	<u>NOF %</u>	<u>% of Total Output</u>	<u>Cumulative % of Total Output</u>	<u>Production Cost (\$000)</u>
Port Everglades 5	1,225	8,760	8,726,003	81.3	7.5	7.5	254,672
Ft. Myers 2	1,470	8,760	8,764,464	68.1	7.5	15.0	292,470
St. Lucie 1	981	8,760	8,459,223	98.4	7.2	22.2	56,470
Riviera 5	1,216	8,760	8,582,578	80.6	7.3	29.6	256,389
West County 2	1,172	8,760	7,918,255	77.1	6.8	36.3	244,066
West County 1	1,182	8,332	7,498,682	76.1	6.4	42.8	232,650
Cape Canaveral 3	1,216	8,760	7,080,435	66.5	6.1	48.8	211,027
Turkey Point 4	821	8,040	6,531,218	98.9	5.6	54.4	44,134
St. Lucie 2	840	7,896	6,518,468	98.3	5.6	60.0	47,594
West County 3	1,182	8,088	6,384,325	66.8	5.5	65.5	196,762
Turkey Point 3	811	8,016	6,434,111	99.0	5.5	71.0	45,234
Martin 8	1,082	6,698	5,089,427	70.2	4.4	75.3	156,166
Manatee 3	1,087	5,891	4,876,313	76.2	4.2	79.5	155,155
Turkey Point 5	1,087	6,001	4,455,154	68.3	3.8	83.3	142,022
Scherer 4	625	8,760	4,219,533	77.1	3.6	86.9	107,079
Sanford 5	970	5,598	3,468,521	63.9	3.0	89.9	119,594
Sanford 4	970	5,068	2,870,273	58.4	2.5	92.4	99,612
Martin 3	451	4,723	1,589,131	74.6	1.4	93.7	56,403
Lauderdale 4	431	4,148	1,358,708	76.0	1.2	94.9	49,267
Lauderdale 5	431	4,293	1,356,536	73.3	1.2	96.0	49,720
Martin 4	431	3,851	1,167,549	70.3	1.0	97.0	42,433
St. Johns 2	127	8,568	617,688	56.8	0.5	97.6	24,825
St. Johns 1	127	7,896	581,826	58.0	0.5	98.1	23,365
Manatee 1	781	1,224	413,866	43.3	0.4	98.4	27,680
Manatee 2	781	1,306	398,959	39.1	0.3	98.8	26,841
Martin 1	796	677	214,159	39.7	0.2	98.9	15,472
Ft. Myers 4A	209	1,251	219,188	84.0	0.2	99.1	10,127
Ft. Myers 4B	209	966	170,603	84.7	0.1	99.3	7,604
Martin 2	768	766	248,659	42.3	0.2	99.5	16,604
Manatee PV Solar	75	4,049	102,580	34.0	0.1	99.6	0
Citrus PV Solar	75	4,049	102,580	34.0	0.1	99.7	0
Babcock PV Solar	75	4,049	102,580	34.0	0.1	99.8	0
Lauderdale 6 CT 2	208	651	119,358	88.1	0.1	99.9	5,577
Desoto	25	4,168	52,307	50.2	0.0	99.9	0
Ft. Myers 3A	171	248	28,190	66.7	0.0	99.9	1,585
Ft. Myers 3B	171	234	26,301	65.9	0.0	100.0	1,479
Space Coast	10	3,895	17,803	45.7	0.0	100.0	0
Lauderdale 6 CT 1	208	69	11,088	77.2	0.0	100.0	529
Lauderdale 6 CT 3	208	90	13,592	72.5	0.0	100.0	1,646
Lauderdale 6 CT 4	208	57	8,550	72.0	0.0	100.0	979
Lauderdale 6 CT 5	208	44	6,600	72.0	0.0	100.0	693
<b>Total</b>	<b>25,119</b>		<b>116,805,385</b>		<b>100.0</b>		<b>3,023,924</b>

**UNITS TO BE USED TO DETERMINE THE  
GENERATING PERFORMANCE INCENTIVE FACTOR**

**FLORIDA POWER & LIGHT COMPANY  
JANUARY THROUGH DECEMBER, 2017**

Cape Canaveral 3

Ft. Myers 2

Manatee 3

Martin 8

St. Lucie 1

St. Lucie 2

Turkey Point 3

Turkey Point 4

Turkey Point 5

West County 1

West County 2

West County 3

## GENERATING PERFORMANCE INCENTIVE FACTOR

## REWARD/PENALTY TABLE ( ESTIMATED )

FLORIDA POWER & LIGHT COMPANY  
JANUARY THROUGH DECEMBER, 2017

<b>Generating Performance Incentive Points (GPIF)</b>	<b>Fuel Savings/(Loss) (\$000)</b>	<b>Generating Performance Incentive Factor (\$000)</b>
+ 10	59,541	29,771
+ 9	53,587	26,793
+ 8	47,633	23,816
+ 7	41,679	20,839
+ 6	35,725	17,862
+ 5	29,771	14,885
+ 4	23,816	11,908
+ 3	17,862	8,931
+ 2	11,908	5,954
+ 1	5,954	2,977
0	0	0
- 1	( 5,954)	( 2,977)
- 2	( 11,908)	( 5,954)
- 3	( 17,862)	( 8,931)
- 4	( 23,816)	( 11,908)
- 5	( 29,771)	( 14,885)
- 6	( 35,725)	( 17,862)
- 7	( 41,679)	( 20,839)
- 8	( 47,633)	( 23,816)
- 9	( 53,587)	( 26,793)
- 10	( 59,541)	( 29,771)

## GENERATING PERFORMANCE INCENTIVE FACTOR

## CALCULATION OF MAXIMUM ALLOWED INCENTIVE DOLLARS (ESTIMATED)

**FLORIDA POWER & LIGHT COMPANY**  
**PERIOD OF: JANUARY THROUGH DECEMBER, 2017**

LINE 1	BEGINNING OF PERIOD BALANCE OF COMMON EQUITY		\$	16,091,437,844
	END OF MONTH BALANCE OF COMMON EQUITY			
LINE 2	MONTH OF JANUARY	2016	\$	16,201,281,085
LINE 3	MONTH OF FEBRUARY	2016	\$	16,299,650,216
LINE 4	MONTH OF MARCH	2016	\$	16,165,306,692
LINE 5	MONTH OF APRIL	2016	\$	16,293,106,710
LINE 6	MONTH OF MAY	2016	\$	16,464,566,486
LINE 7	MONTH OF JUNE	2016	\$	16,657,388,072
LINE 8	MONTH OF JULY	2016	\$	16,374,574,592
LINE 9	MONTH OF AUGUST	2016	\$	16,599,131,215
LINE 10	MONTH OF SEPTEMBER	2016	\$	16,794,358,695
LINE 11	MONTH OF OCTOBER	2016	\$	16,962,345,501
LINE 12	MONTH OF NOVEMBER	2016	\$	17,073,976,934
LINE 13	MONTH OF DECEMBER	2016	\$	17,202,582,094
LINE 14	AVERAGE COMMON EQUITY FOR THE PERIOD (SUMMATION OF LINE 1 THROUGH LINE 13 DIVIDED BY 13)		\$	16,552,285,087
LINE 15	25 BASIS POINTS			0.0025
LINE 16	REVENUE EXPANSION FACTOR			61.3808%
LINE 17	MAXIMUM ALLOWED INCENTIVE DOLLARS (LINE 14 TIMES LINE 15 DIVIDED BY LINE 16 )		\$	67,416,379
LINE 18	JURISDICTIONAL SALES			107,335,993,752 KWH
LINE 19	TOTAL SALES			113,323,505,930 KWH
LINE 20	JURISDICTIONAL SEPARATION FACTOR (LINE 18 DIVIDED BY LINE 19)			94.72%
LINE 21	MAXIMUM ALLOWED JURISDICTIONAL INCENTIVE DOLLARS (LINE 17 TIMES LINE 20)		\$	63,856,794
LINE 22	INCENTIVE CAP (50 PERCENT OF PROJECTED FUEL SAVINGS AT 10 GPIF-POINT LEVEL FROM SHEET NO. 3.515)		\$	29,770,500
LINE 23	MAXIMUM ALLOWED GPIF REWARD (AT 10 GPIF-POINT LEVEL) (THE LESSER OF LINE 21 AND LINE 22)		\$	29,770,500

Note: Line 22 and 23 are as approved by Commission order PSC-13-0665-FOF-EI dated 12/18/13 effective 1/1/14.

## GPIF TARGET AND RANGE SUMMARY

**FLORIDA POWER & LIGHT COMPANY**  
**PERIOD OF: JANUARY THROUGH DECEMBER, 2017**

<u>Plant / Unit</u>	<u>Weighting Factor (%)</u>	<u>EAF Target (%)</u>	<u>EAF Range</u>		<u>Max. Fuel Savings (\$000's)</u>	<u>Max. Fuel Loss (\$000's)</u>
			<u>Max. (%)</u>	<u>Min. (%)</u>		
Cape Canaveral 3	1.90	79.4	82.4	76.4	1,132	-1,132
Manatee 3	0.81	70.9	72.9	68.9	480	-480
Ft. Myers 2	1.55	92.4	94.9	89.9	921	-921
Martin 8	0.90	72.9	75.4	70.4	537	-537
St. Lucie 1	8.71	93.6	96.6	90.6	5,184	-5,184
St. Lucie 2	6.32	83.7	86.7	80.7	3,765	-3,765
Turkey Point 3	6.43	85.1	88.1	82.1	3,830	-3,830
Turkey Point 4	6.82	85.4	88.4	82.4	4,062	-4,062
Turkey Point 5	0.94	78.3	80.3	76.3	560	-560
West County 1	1.33	89.5	92.0	87.0	791	-791
West County 2	1.45	93.0	95.5	90.5	862	-862
West County 3	1.39	76.1	78.6	73.6	830	-830
	38.55				22,954	-22,954

GPIF TARGET AND RANGE SUMMARY

FLORIDA POWER & LIGHT COMPANY  
 PERIOD OF: JANUARY THROUGH DECEMBER, 2017

<u>Plant / Unit</u>	<u>Weighting Factor (%)</u>	<u>ANOHR TARGET</u>		<u>ANOHR RANGE</u>		<u>Max. Fuel Savings (\$000's)</u>	<u>Max. Fuel Loss (\$000's)</u>
		<u>BTU/KWH</u>	<u>NOF</u>	<u>BTU/KWH</u>	<u>BTU/KWH</u>		
Cape Canaveral 3	4.31	6,661	66.5	6,580	6,742	2,566	-2,566
Manatee 3	6.74	6,962	76.2	6,782	7,142	4,011	-4,011
Ft. Myers 2	14.19	7,301	68.1	7,090	7,512	8,452	-8,452
Martin 8	4.25	6,977	70.2	6,864	7,090	2,529	-2,529
St. Lucie 1	0.97	10,401	98.4	10,293	10,509	576	-576
St. Lucie 2	0.72	10,278	98.3	10,184	10,372	427	-427
Turkey Point 3	1.23	11,106	99.0	10,926	11,286	730	-730
Turkey Point 4	0.99	11,019	98.9	10,870	11,168	590	-590
Turkey Point 5	2.74	7,136	68.3	7,054	7,218	1,632	-1,632
West County 1	10.45	6,951	76.1	6,765	7,137	6,225	-6,225
West County 2	8.18	6,911	77.1	6,773	7,049	4,874	-4,874
West County 3	6.68	6,980	66.8	6,839	7,121	3,975	-3,975
	<u>61.45</u>					<u>36,587</u>	<u>-36,587</u>



**GENERATING PERFORMANCE INCENTIVE FACTOR  
PROJECTED UNIT HEAT RATE EQUATIONS  
FLORIDA POWER & LIGHT COMPANY  
PERIOD OF: JANUARY THROUGH DECEMBER, 2017**

<u>Plant/Unit</u>	<u>ANOHR</u>	<u>NOF</u>	<u>MW</u>	<u>ANOHR Equation</u>		<u>Bounds</u>	<u>First</u>	<u>Last</u>	<u>Exclusions</u>
				<u>a coef.</u>	<u>b coef.</u>				
Cape Canaveral 3	6,661	66.5	1216	6843	-2.73	81	07-13	06-16	9/13, 12/13, 2/14, 3/14, 8/14, 5/16
Manatee 3	6,962	76.2	1087	7594	-8.30	180	07-13	06-16	6/14, 6/15, 11/15
Ft. Myers 2	7,301	68.1	1470	7634	-4.89	211	07-13	06-16	9/13, 10/13, 11/13
Martin 8	6,977	70.2	1082	7148	-2.43	113	07-13	06-16	2/15, 2/16
St. Lucie 1	10,401	98.4	981	12922	-25.62	108	07-13	06-16	10/13, 4/15
St. Lucie 2	10,278	98.3	840	12471	-22.31	94	07-13	06-16	10/15
Turkey Point 3	11,106	99.0	811	15143	-40.78	180	07-13	06-16	4/14, 9/14, 11/15, 12/15
Turkey Point 4	11,019	98.9	821	17890	-69.47	149	07-13	06-16	10/14, 4/16
Turkey Point 5	7,136	68.3	1087	7749	-8.97	82	07-13	06-16	2/14, 11/14
West County 1	6,951	76.1	1182	7903	-12.51	186	07-13	06-16	12/13, 10/14, 11/14
West County 2	6,911	77.1	1172	7620	-9.20	138	07-13	06-16	12/13, 1/14, 12/14, 10/15, 11/15
West County 3	6,980	66.8	1182	7227	-3.70	141	07-13	06-16	7/13, 12/13, 1/14, 12/14, 5/16

## DERIVATION OF WEIGHTING FACTORS

FLORIDA POWER & LIGHT COMPANY  
PERIOD OF: JANUARY THROUGH DECEMBER, 2017

PRODUCTION COSTING SIMULATION  
FUEL COST (\$000)

Unit	Performance Indicator	At Target (1)	At Maximum Improvement (2)	Savings (3)	Factor (% Of Savings)
Cape Canaveral 3	EAF	3,023,924	3,022,792	1,132	1.90
Cape Canaveral 3	ANOHR	3,023,924	3,021,358	2,566	4.31
Manatee 3	EAF	3,023,924	3,023,444	480	0.81
Manatee 3	ANOHR	3,023,924	3,019,913	4,011	6.74
Ft. Myers 2	EAF	3,023,924	3,023,003	921	1.55
Ft. Myers 2	ANOHR	3,023,924	3,015,472	8,452	14.19
Martin 8	EAF	3,023,924	3,023,387	537	0.90
Martin 8	ANOHR	3,023,924	3,021,395	2,529	4.25
St. Lucie 1	EAF	3,023,924	3,018,740	5,184	8.71
St. Lucie 1	ANOHR	3,023,924	3,023,348	576	0.97
St. Lucie 2	EAF	3,023,924	3,020,159	3,765	6.32
St. Lucie 2	ANOHR	3,023,924	3,023,497	427	0.72
Turkey Point 3	EAF	3,023,924	3,020,094	3,830	6.43
Turkey Point 3	ANOHR	3,023,924	3,023,194	730	1.23
Turkey Point 4	EAF	3,023,924	3,019,862	4,062	6.82
Turkey Point 4	ANOHR	3,023,924	3,023,334	590	0.99
Turkey Point 5	EAF	3,023,924	3,023,364	560	0.94
Turkey Point 5	ANOHR	3,023,924	3,022,292	1,632	2.74
West County 1	EAF	3,023,924	3,023,133	791	1.33
West County 1	ANOHR	3,023,924	3,017,699	6,225	10.45
West County 2	EAF	3,023,924	3,023,062	862	1.45
West County 2	ANOHR	3,023,924	3,019,050	4,874	8.18
West County 3	EAF	3,023,924	3,023,094	830	1.39
West County 3	ANOHR	3,023,924	3,019,949	3,975	6.68
TOTAL				59,541	100.00

(1) FUEL ADJUSTMENT - ALL UNITS PERFORMANCE AT TARGET

(2) ALL OTHER UNITS PERFORMANCE AT TARGET

(3) EXPRESSED IN REPLACEMENT ENERGY COSTS.

## ESTIMATED UNIT PERFORMANCE DATA

## FLORIDA POWER &amp; LIGHT

PERIOD OF: JANUARY THROUGH DECEMBER, 2017

Cape Canaveral 3	Jan '17	Feb '17	Mar '17	Apr '17	May '17	Jun '17
1 EAF (%)	88.3	73.6	59.8	58.9	88.3	88.3
2 EPOF (%)	0.0	16.7	32.3	33.3	0.0	0.0
3 EUOF (%)	11.7	9.7	7.9	7.8	11.7	11.7
4 EUOR (%)	11.7	9.7	7.9	7.8	11.7	11.7
5 PH	744	672	744	720	744	720
6 SH	744	672	744	720	744	720
7 RSH	0	0	0	0	0	0
8 UH	0	0	0	0	0	0
9 POH	0	0	0	0	0	0
10 FOH & EFOH	17	12	11	11	17	16
11 MOH & EMOH	70	53	48	45	70	68
12 Oper Mbtu	5,542,693	4,051,390	3,108,255	2,879,463	4,239,554	4,522,422
13 Net Gen (MWH)	841,204	610,241	463,711	429,194	637,431	682,115
14 ANOHR (Btu/KWH)	6,589	6,639	6,703	6,709	6,651	6,630
15 NOF (%)	93.0	74.7	51.3	49.0	70.5	77.9
16 NSC (MW)	1,216	1,216	1,216	1,216	1,216	1,216
17 ANOHR Equation	-2.73 x NOF + 6843					

Cape Canaveral 3	Jul '17	Aug '17	Sep '17	Oct '17	Nov '17	Dec '17	Total
1 EAF (%)	88.3	88.3	88.3	88.3	70.7	70.3	79.4
2 EPOF (%)	0.0	0.0	0.0	0.0	20.0	20.4	10.1
3 EUOF (%)	11.7	11.7	11.7	11.7	9.3	9.3	10.5
4 EUOR (%)	11.7	11.7	11.7	11.7	9.3	9.3	10.5
5 PH	744	744	720	744	720	744	8,760
6 SH	744	744	720	744	720	744	8,760
7 RSH	0	0	0	0	0	0	0
8 UH	0	0	0	0	0	0	0
9 POH	0	0	0	0	0	0	0
10 FOH & EFOH	17	17	16	17	13	13	175
11 MOH & EMOH	70	70	68	70	54	56	745
12 Oper Mbtu	4,455,075	4,041,881	3,663,535	3,962,854	2,865,190	3,789,329	47,162,778
13 Net Gen (MWH)	670,945	606,889	549,091	594,666	427,003	567,945	7,080,435
14 ANOHR (Btu/KWH)	6,640	6,660	6,672	6,664	6,710	6,672	6,661
15 NOF (%)	74.2	67.1	62.7	65.7	48.8	62.8	66.5
16 NSC (MW)	1,216	1,216	1,216	1,216	1,216	1,216	1,216
17 ANOHR Equation	-2.73 x NOF + 6843						

## ESTIMATED UNIT PERFORMANCE DATA

## FLORIDA POWER &amp; LIGHT

PERIOD OF: JANUARY THROUGH DECEMBER, 2017

	Ft. Myers 2	Jan '17	Feb '17	Mar '17	Apr '17	May '17	Jun '17
1	EAF (%)	94.8	94.8	94.8	94.8	94.8	94.8
2	EPOF (%)	0.0	0.0	0.0	0.0	0.0	0.0
3	EUOF (%)	5.2	5.2	5.2	5.2	5.2	5.2
4	EUOR (%)	5.2	5.2	5.2	5.2	5.2	5.2
5	PH	744	672	744	720	744	720
6	SH	744	672	744	720	744	720
7	RSH	0	0	0	0	0	0
8	UH	0	0	0	0	0	0
9	POH	0	0	0	0	0	0
10	FOH & EFOH	15	14	15	15	15	15
11	MOH & EMOH	24	21	24	23	24	23
12	Oper Mbtu	4,359,176	4,452,275	5,272,603	5,848,975	5,624,673	5,078,184
13	Net Gen (MWH)	591,556	607,156	721,089	805,422	771,666	694,405
14	ANOHR (Btu/KWH)	7,369	7,333	7,312	7,262	7,289	7,313
15	NOF (%)	54.1	61.5	65.9	76.1	70.6	65.6
16	NSC (MW)	1,470	1,470	1,470	1,470	1,470	1,470
17	ANOHR Equation	-4.89 x NOF + 7634					

	Ft. Myers 2	Jul '17	Aug '17	Sep '17	Oct '17	Nov '17	Dec '17	Total
1	EAF (%)	94.8	94.8	94.8	94.8	81.6	80.1	92.4
2	EPOF (%)	0.0	0.0	0.0	0.0	13.9	15.5	2.5
3	EUOF (%)	5.2	5.2	5.2	5.2	4.5	4.4	5.1
4	EUOR (%)	5.2	5.2	5.2	5.2	4.5	4.4	5.1
5	PH	744	744	720	744	720	744	8,760
6	SH	744	744	720	744	720	744	8,760
7	RSH	0	0	0	0	0	0	0
8	UH	0	0	0	0	0	0	0
9	POH	0	0	0	0	0	0	0
10	FOH & EFOH	15	15	15	15	13	13	175
11	MOH & EMOH	24	24	23	24	20	20	272
12	Oper Mbtu	5,390,564	5,725,210	5,616,505	6,136,791	5,398,581	5,062,454	63,989,352
13	Net Gen (MWH)	738,029	786,214	771,710	845,754	740,343	691,120	8,764,464
14	ANOHR (Btu/KWH)	7,304	7,282	7,278	7,256	7,292	7,325	7,301
15	NOF (%)	67.5	71.9	72.9	77.3	69.9	63.2	68.1
16	NSC (MW)	1,470	1,470	1,470	1,470	1,470	1,470	1,470
17	ANOHR Equation	-4.89 x NOF + 7634						

## ESTIMATED UNIT PERFORMANCE DATA

## FLORIDA POWER &amp; LIGHT

PERIOD OF: JANUARY THROUGH DECEMBER, 2017

Manatee 3	Jan '17	Feb '17	Mar '17	Apr '17	May '17	Jun '17
1 EAF (%)	94.4	94.4	51.7	0.0	0.0	59.0
2 EPOF (%)	0.0	0.0	45.2	100.0	100.0	37.5
3 EUOF (%)	5.6	5.6	3.1	0.0	0.0	3.5
4 EUOR (%)	8.4	7.9	5.0	0.0	0.0	4.2
5 PH	744	672	744	720	744	720
6 SH	498	478	455	0	0	600
7 RSH	246	194	121	0	0	0
8 UH	0	0	168	720	744	120
9 POH	0	0	168	720	744	120
10 FOH & EFOH	20	18	11	0	0	12
11 MOH & EMOH	22	20	12	0	0	13
12 Oper Mbtu	2,648,773	2,783,975	2,260,573	0	0	2,827,123
13 Net Gen (MWH)	377,587	400,284	320,376	0	0	398,973
14 ANOHR (Btu/KWH)	7,015	6,955	7,056	0	0	7,086
15 NOF (%)	69.8	77.0	64.8	0.0	0.0	61.2
16 NSC (MW)	1,087	1,087	1,087	1,087	1,087	1,087
17 ANOHR Equation	-8.3 x NOF + 7594					

Manatee 3	Jul '17	Aug '17	Sep '17	Oct '17	Nov '17	Dec '17	Total
1 EAF (%)	80.7	94.4	94.4	94.4	94.4	94.4	70.9
2 EPOF (%)	14.5	0.0	0.0	0.0	0.0	0.0	24.9
3 EUOF (%)	4.8	5.6	5.6	5.6	5.6	5.6	4.2
4 EUOR (%)	4.8	5.6	5.6	6.0	6.7	11.9	6.2
5 PH	744	744	720	744	720	744	8,760
6 SH	744	744	720	698	604	350	5,891
7 RSH	0	0	0	46	116	394	1,117
8 UH	0	0	0	0	0	0	1,752
9 POH	0	0	0	0	0	0	1,752
10 FOH & EFOH	17	20	19	20	19	20	175
11 MOH & EMOH	19	22	21	22	21	22	193
12 Oper Mbtu	3,954,019	4,365,028	4,202,650	4,795,532	3,855,981	2,208,027	33,948,891
13 Net Gen (MWH)	563,652	628,152	604,437	702,642	559,974	320,236	4,876,313
14 ANOHR (Btu/KWH)	7,015	6,949	6,953	6,825	6,886	6,895	6,962
15 NOF (%)	69.7	77.7	77.2	92.6	85.3	84.2	76.2
16 NSC (MW)	1,087	1,087	1,087	1,087	1,087	1,087	1,087
17 ANOHR Equation	-8.3 x NOF + 7594						

## ESTIMATED UNIT PERFORMANCE DATA

## FLORIDA POWER &amp; LIGHT

PERIOD OF: JANUARY THROUGH DECEMBER, 2017

Martin 8	Jan '17	Feb '17	Mar '17	Apr '17	May '17	Jun '17
1 EAF (%)	13.5	0.0	21.0	92.9	92.9	92.9
2 EPOF (%)	85.5	100.0	77.4	0.0	0.0	0.0
3 EUOF (%)	1.0	0.0	1.6	7.1	7.1	7.1
4 EUOR (%)	5.4	0.0	7.1	7.1	7.1	7.1
5 PH	744	672	744	720	744	720
6 SH	144	0	168	720	744	720
7 RSH	0	0	0	0	0	0
8 UH	600	672	576	0	0	0
9 POH	600	672	576	0	0	0
10 FOH & EFOH	3	0	4	18	19	18
11 MOH & EMOH	5	0	8	33	34	33
12 Oper Mbtu	502,898	0	816,777	3,660,224	4,052,219	3,626,838
13 Net Gen (MWH)	71,475	0	116,816	524,087	581,130	519,158
14 ANOHR (Btu/KWH)	7,036	0	6,992	6,984	6,973	6,986
15 NOF (%)	45.9	0.0	64.3	67.3	72.2	66.6
16 NSC (MW)	1,082	1,082	1,082	1,082	1,082	1,082
17 ANOHR Equation	-2.43 x NOF + 7148					

Martin 8	Jul '17	Aug '17	Sep '17	Oct '17	Nov '17	Dec '17	Total
1 EAF (%)	92.9	92.9	92.9	92.9	92.9	92.9	72.9
2 EPOF (%)	0.0	0.0	0.0	0.0	0.0	0.0	21.5
3 EUOF (%)	7.1	7.1	7.1	7.1	7.1	7.1	5.6
4 EUOR (%)	7.1	7.1	7.1	7.1	10.2	7.1	7.3
5 PH	744	744	720	744	720	744	8,760
6 SH	744	744	720	744	506	744	6,698
7 RSH	0	0	0	0	214	0	214
8 UH	0	0	0	0	0	0	1,848
9 POH	0	0	0	0	0	0	1,848
10 FOH & EFOH	19	19	18	19	18	19	175
11 MOH & EMOH	34	34	33	34	33	34	315
12 Oper Mbtu	4,027,618	3,875,366	3,819,733	4,233,759	3,143,122	3,746,256	35,508,932
13 Net Gen (MWH)	577,519	555,210	547,475	607,862	452,443	536,252	5,089,427
14 ANOHR (Btu/KWH)	6,974	6,980	6,977	6,965	6,947	6,986	6,977
15 NOF (%)	71.7	69.0	70.3	75.5	82.6	66.6	70.2
16 NSC (MW)	1,082	1,082	1,082	1,082	1,082	1,082	1,082
17 ANOHR Equation	-2.43 x NOF + 7148						

## ESTIMATED UNIT PERFORMANCE DATA

## FLORIDA POWER &amp; LIGHT

PERIOD OF: JANUARY THROUGH DECEMBER, 2017

St. Lucie 1	Jan '17	Feb '17	Mar '17	Apr '17	May '17	Jun '17
1 EAF (%)	93.6	93.6	93.6	93.6	93.6	93.6
2 EPOF (%)	0.0	0.0	0.0	0.0	0.0	0.0
3 EUOF (%)	6.4	6.4	6.4	6.4	6.4	6.4
4 EUOR (%)	6.4	6.4	6.4	6.4	6.4	6.4
5 PH	744	672	744	720	744	720
6 SH	744	672	744	720	744	720
7 RSH	0	0	0	0	0	0
8 UH	0	0	0	0	0	0
9 POH	0	0	0	0	0	0
10 FOH & EFOH	24	22	24	23	24	23
11 MOH & EMOH	24	22	24	23	24	23
12 Oper Mbtu	7,546,535	6,816,218	7,546,535	7,179,079	7,418,385	7,179,079
13 Net Gen (MWH)	728,079	657,619	728,079	688,707	711,664	688,707
14 ANOHR (Btu/KWH)	10,365	10,365	10,365	10,424	10,424	10,424
15 NOF (%)	99.8	99.8	99.8	97.5	97.5	97.5
16 NSC (MW)	981	981	981	981	981	981
17 ANOHR Equation	-25.62 x NOF + 12922					

St. Lucie 1	Jul '17	Aug '17	Sep '17	Oct '17	Nov '17	Dec '17	Total
1 EAF (%)	93.6	93.6	93.6	93.6	93.6	93.6	93.6
2 EPOF (%)	0.0	0.0	0.0	0.0	0.0	0.0	0.0
3 EUOF (%)	6.4	6.4	6.4	6.4	6.4	6.4	6.4
4 EUOR (%)	6.4	6.4	6.4	6.4	6.4	6.4	6.4
5 PH	744	744	720	744	720	744	8,760
6 SH	744	744	720	744	720	744	8,760
7 RSH	0	0	0	0	0	0	0
8 UH	0	0	0	0	0	0	0
9 POH	0	0	0	0	0	0	0
10 FOH & EFOH	24	24	23	24	23	24	280
11 MOH & EMOH	24	24	23	24	23	24	280
12 Oper Mbtu	7,418,385	7,418,385	7,179,079	7,418,385	7,303,100	7,546,535	87,984,378
13 Net Gen (MWH)	711,664	711,664	688,707	711,664	704,592	728,079	8,459,223
14 ANOHR (Btu/KWH)	10,424	10,424	10,424	10,424	10,365	10,365	10,401
15 NOF (%)	97.5	97.5	97.5	97.5	99.8	99.8	98.4
16 NSC (MW)	981	981	981	981	981	981	981
17 ANOHR Equation	-25.62 x NOF + 12922						

## ESTIMATED UNIT PERFORMANCE DATA

## FLORIDA POWER &amp; LIGHT

PERIOD OF: JANUARY THROUGH DECEMBER, 2017

St. Lucie 2	Jan '17	Feb '17	Mar '17	Apr '17	May '17	Jun '17
1 EAF (%)	92.9	63.1	12.0	92.9	92.9	92.9
2 EPOF (%)	0.0	32.1	87.1	0.0	0.0	0.0
3 EUOF (%)	7.1	4.8	0.9	7.1	7.1	7.1
4 EUOR (%)	7.1	7.1	7.1	7.1	7.1	7.1
5 PH	744	672	744	720	744	720
6 SH	744	456	96	720	744	720
7 RSH	0	0	0	0	0	0
8 UH	0	216	648	0	0	0
9 POH	0	216	648	0	0	0
10 FOH & EFOH	26	16	3	26	26	26
11 MOH & EMOH	26	16	3	26	26	26
12 Oper Mbtu	6,387,400	3,914,854	824,176	6,070,885	6,273,250	6,070,885
13 Net Gen (MWH)	623,343	382,049	80,431	589,635	609,290	589,635
14 ANOHR (Btu/KWH)	10,247	10,247	10,247	10,296	10,296	10,296
15 NOF (%)	99.7	99.7	99.7	97.5	97.5	97.5
16 NSC (MW)	840	840	840	840	840	840
17 ANOHR Equation	-22.31 x NOF + 12471					

St. Lucie 2	Jul '17	Aug '17	Sep '17	Oct '17	Nov '17	Dec '17	Total
1 EAF (%)	92.9	92.9	92.9	92.9	92.9	92.9	83.7
2 EPOF (%)	0.0	0.0	0.0	0.0	0.0	0.0	9.9
3 EUOF (%)	7.1	7.1	7.1	7.1	7.1	7.1	6.4
4 EUOR (%)	7.1	7.1	7.1	7.1	7.1	7.1	7.1
5 PH	744	744	720	744	720	744	8,760
6 SH	744	744	720	744	720	744	7,896
7 RSH	0	0	0	0	0	0	0
8 UH	0	0	0	0	0	0	864
9 POH	0	0	0	0	0	0	864
10 FOH & EFOH	26	26	26	26	26	26	280
11 MOH & EMOH	26	26	26	26	26	26	280
12 Oper Mbtu	6,273,250	6,273,250	6,070,885	6,273,250	6,181,356	6,387,400	66,996,814
13 Net Gen (MWH)	609,290	609,290	589,635	609,290	603,236	623,343	6,518,468
14 ANOHR (Btu/KWH)	10,296	10,296	10,296	10,296	10,247	10,247	10,278
15 NOF (%)	97.5	97.5	97.5	97.5	99.7	99.7	98.3
16 NSC (MW)	840	840	840	840	840	840	840
17 ANOHR Equation	-22.31 x NOF + 12471						



## ESTIMATED UNIT PERFORMANCE DATA

## FLORIDA POWER &amp; LIGHT

PERIOD OF: JANUARY THROUGH DECEMBER, 2017

Turkey Point 3		Jan '17	Feb '17	Mar '17	Apr '17	May '17	Jun '17
1	EAF (%)	93.0	93.0	78.0	12.4	93.0	93.0
2	EPOF (%)	0.0	0.0	16.1	86.7	0.0	0.0
3	EUOF (%)	7.0	7.0	5.9	0.9	7.0	7.0
4	EUOR (%)	7.0	7.0	7.0	7.0	7.0	7.0
5	PH	744	672	744	720	744	720
6	SH	744	672	624	96	744	720
7	RSH	0	0	0	0	0	0
8	UH	0	0	120	624	0	0
9	POH	0	0	120	624	0	0
10	FOH & EFOH	26	23	22	3	26	25
11	MOH & EMOH	26	23	22	3	26	25
12	Oper Mbtu	6,711,762	6,062,235	5,629,221	847,687	6,569,535	6,357,619
13	Net Gen (MWH)	608,611	549,713	510,448	75,910	588,299	569,322
14	ANOHR (Btu/KWH)	11,028	11,028	11,028	11,167	11,167	11,167
15	NOF (%)	100.9	100.9	100.9	97.5	97.5	97.5
16	NSC (MW)	811	811	811	811	811	811
17	ANOHR Equation	-40.78 x NOF + 15143					

Turkey Point 3		Jul '17	Aug '17	Sep '17	Oct '17	Nov '17	Dec '17	Total
1	EAF (%)	93.0	93.0	93.0	93.0	93.0	93.0	85.1
2	EPOF (%)	0.0	0.0	0.0	0.0	0.0	0.0	8.5
3	EUOF (%)	7.0	7.0	7.0	7.0	7.0	7.0	6.4
4	EUOR (%)	7.0	7.0	7.0	7.0	7.0	7.0	7.0
5	PH	744	744	720	744	720	744	8,760
6	SH	744	744	720	744	720	744	8,016
7	RSH	0	0	0	0	0	0	0
8	UH	0	0	0	0	0	0	744
9	POH	0	0	0	0	0	0	744
10	FOH & EFOH	26	26	25	26	25	26	280
11	MOH & EMOH	26	26	25	26	25	26	280
12	Oper Mbtu	6,569,535	6,569,535	6,357,619	6,569,535	6,495,249	6,711,762	71,457,237
13	Net Gen (MWH)	588,299	588,299	569,322	588,299	588,978	608,611	6,434,111
14	ANOHR (Btu/KWH)	11,167	11,167	11,167	11,167	11,028	11,028	11,106
15	NOF (%)	97.5	97.5	97.5	97.5	100.9	100.9	99.0
16	NSC (MW)	811	811	811	811	811	811	811
17	ANOHR Equation	-40.78 x NOF + 15143						

## ESTIMATED UNIT PERFORMANCE DATA

## FLORIDA POWER &amp; LIGHT

PERIOD OF: JANUARY THROUGH DECEMBER, 2017

	Turkey Point 4	Jan '17	Feb '17	Mar '17	Apr '17	May '17	Jun '17
1	EAF (%)	93.0	93.0	93.0	93.0	93.0	93.0
2	EPOF (%)	0.0	0.0	0.0	0.0	0.0	0.0
3	EUOF (%)	7.0	7.0	7.0	7.0	7.0	7.0
4	EUOR (%)	7.0	7.0	7.0	7.0	7.0	7.0
5	PH	744	672	744	720	744	720
6	SH	744	672	744	720	744	720
7	RSH	0	0	0	0	0	0
8	UH	0	0	0	0	0	0
9	POH	0	0	0	0	0	0
10	FOH & EFOH	26	23	26	25	26	25
11	MOH & EMOH	26	23	26	25	26	25
12	Oper Mbtu	6,701,324	6,052,804	6,701,324	6,407,194	6,620,763	6,407,194
13	Net Gen (MWH)	615,139	555,609	615,139	576,342	595,553	576,342
14	ANOHR (Btu/KWH)	10,894	10,894	10,894	11,117	11,117	11,117
15	NOF (%)	100.7	100.7	100.7	97.5	97.5	97.5
16	NSC (MW)	821	821	821	821	821	821
17	ANOHR Equation	-69.47 x NOF + 17890					

	Turkey Point 4	Jul '17	Aug '17	Sep '17	Oct '17	Nov '17	Dec '17	Total
1	EAF (%)	93.0	93.0	93.0	3.0	93.0	93.0	85.4
2	EPOF (%)	0.0	0.0	0.0	96.8	0.0	0.0	8.2
3	EUOF (%)	7.0	7.0	7.0	0.2	7.0	7.0	6.4
4	EUOR (%)	7.0	7.0	7.0	7.0	7.0	7.0	7.0
5	PH	744	744	720	744	720	744	8,760
6	SH	744	744	720	24	720	744	8,040
7	RSH	0	0	0	0	0	0	0
8	UH	0	0	0	720	0	0	720
9	POH	0	0	0	720	0	0	720
10	FOH & EFOH	26	26	25	1	25	26	280
11	MOH & EMOH	26	26	25	1	25	26	280
12	Oper Mbtu	6,620,763	6,620,763	6,407,194	213,569	6,485,155	6,701,324	71,967,491
13	Net Gen (MWH)	595,553	595,553	576,342	19,211	595,296	615,139	6,531,218
14	ANOHR (Btu/KWH)	11,117	11,117	11,117	11,117	10,894	10,894	11,019
15	NOF (%)	97.5	97.5	97.5	97.5	100.7	100.7	98.9
16	NSC (MW)	821	821	821	821	821	821	821
17	ANOHR Equation	-69.47 x NOF + 17890						

## ESTIMATED UNIT PERFORMANCE DATA

## FLORIDA POWER &amp; LIGHT

PERIOD OF: JANUARY THROUGH DECEMBER, 2017

	Turkey Point 5	Jan '17	Feb '17	Mar '17	Apr '17	May '17	Jun '17
1	EAF (%)	95.1	95.1	95.1	95.1	95.1	95.1
2	EPOF (%)	0.0	0.0	0.0	0.0	0.0	0.0
3	EUOF (%)	4.9	4.9	4.9	4.9	4.9	4.9
4	EUOR (%)	8.7	8.1	6.9	7.1	6.0	4.9
5	PH	744	672	744	720	744	720
6	SH	415	401	525	490	606	720
7	RSH	329	271	219	230	138	0
8	UH	0	0	0	0	0	0
9	POH	0	0	0	0	0	0
10	FOH & EFOH	18	16	18	18	18	18
11	MOH & EMOH	18	16	18	18	18	18
12	Oper Mbtu	1,925,755	2,206,084	3,367,075	3,148,918	3,865,934	3,799,868
13	Net Gen (MWH)	266,762	310,279	481,561	450,489	552,592	532,269
14	ANOHR (Btu/KWH)	7,219	7,110	6,992	6,990	6,996	7,139
15	NOF (%)	59.1	71.2	84.4	84.6	83.9	68.0
16	NSC (MW)	1,087	1,087	1,087	1,087	1,087	1,087
17	ANOHR Equation	-8.97 x NOF + 7749					

	Turkey Point 5	Jul '17	Aug '17	Sep '17	Oct '17	Nov '17	Dec '17	Total
1	EAF (%)	95.1	95.1	71.4	41.4	14.3	51.4	78.3
2	EPOF (%)	0.0	0.0	25.0	56.5	85.0	46.0	17.7
3	EUOF (%)	4.9	4.9	3.6	2.1	0.7	2.6	4
4	EUOR (%)	4.9	4.9	3.6	4.7	8.0	8.3	5.8
5	PH	744	744	720	744	720	744	8,760
6	SH	744	744	720	334	66	236	6,001
7	RSH	0	0	0	410	414	508	2519
8	UH	0	0	0	0	240	0	240
9	POH	0	0	0	0	240	0	240
10	FOH & EFOH	18	18	13	8	3	10	175
11	MOH & EMOH	18	18	13	8	3	10	175
12	Oper Mbtu	4,123,121	3,880,885	3,188,568	1,212,821	217,260	762,508	31,791,979
13	Net Gen (MWH)	580,231	543,009	440,106	165,212	29,435	103,209	4,455,154
14	ANOHR (Btu/KWH)	7,106	7,147	7,245	7,341	7,381	7,388	7,136
15	NOF (%)	71.7	67.1	56.2	45.5	41.0	40.2	68.3
16	NSC (MW)	1,087	1,087	1,087	1,087	1,087	1,087	1,087
17	ANOHR Equation	-8.97 x NOF + 7749						

## ESTIMATED UNIT PERFORMANCE DATA

## FLORIDA POWER &amp; LIGHT

PERIOD OF: JANUARY THROUGH DECEMBER, 2017

West County 1	Jan '17	Feb '17	Mar '17	Apr '17	May '17	Jun '17
1 EAF (%)	92.0	78.8	74.1	92.0	92.0	92.0
2 EPOF (%)	0.0	14.3	19.4	0.0	0.0	0.0
3 EUOF (%)	8.0	6.9	6.5	8.0	8.0	8.0
4 EUOR (%)	8.0	8.0	8.0	8.0	8.0	8.0
5 PH	744	672	744	720	744	720
6 SH	744	576	600	720	744	720
7 RSH	0	0	0	0	0	0
8 UH	0	96	144	0	0	0
9 POH	0	96	144	0	0	0
10 FOH & EFOH	15	12	12	15	15	15
11 MOH & EMOH	44	34	36	43	44	43
12 Oper Mbtu	4,854,943	3,587,167	4,324,275	5,106,794	5,017,381	4,301,129
13 Net Gen (MWH)	703,411	515,694	638,081	751,220	731,077	614,447
14 ANOHR (Btu/KWH)	6,902	6,956	6,777	6,798	6,863	7,000
15 NOF (%)	80.0	75.7	90.0	88.3	83.1	72.2
16 NSC (MW)	1,182	1,182	1,182	1,182	1,182	1,182
17 ANOHR Equation	-12.51 x NOF + 7903					

West County 1	Jul '17	Aug '17	Sep '17	Oct '17	Nov '17	Dec '17	Total
1 EAF (%)	92.0	92.0	92.0	92.0	92.0	92.0	89.5
2 EPOF (%)	0.0	0.0	0.0	0.0	0.0	0.0	2.7
3 EUOF (%)	8.0	8.0	8.0	8.0	8.0	8.0	7.8
4 EUOR (%)	8.0	8.0	8.0	8.0	10.9	8.0	8.2
5 PH	744	744	720	744	720	744	8,760
6 SH	744	744	720	744	532	744	8,332
7 RSH	0	0	0	0	188	0	188
8 UH	0	0	0	0	0	0	240
9 POH	0	0	0	0	0	0	240
10 FOH & EFOH	15	15	15	15	15	15	175
11 MOH & EMOH	44	44	43	44	43	44	508
12 Oper Mbtu	3,811,574	4,121,956	3,957,543	4,192,142	3,844,091	4,883,727	52,123,339
13 Net Gen (MWH)	533,535	582,691	558,896	593,872	567,561	708,197	7,498,682
14 ANOHR (Btu/KWH)	7,144	7,074	7,081	7,059	6,773	6,896	6,951
15 NOF (%)	60.7	66.3	65.7	67.5	90.3	80.5	76.1
16 NSC (MW)	1,182	1,182	1,182	1,182	1,182	1,182	1,182
17 ANOHR Equation	-12.51 x NOF + 7903						

## ESTIMATED UNIT PERFORMANCE DATA

## FLORIDA POWER &amp; LIGHT

PERIOD OF: JANUARY THROUGH DECEMBER, 2017

West County 2	Jan '17	Feb '17	Mar '17	Apr '17	May '17	Jun '17
1 EAF (%)	93.0	93.0	93.0	93.0	93.0	93.0
2 EPOF (%)	0.0	0.0	0.0	0.0	0.0	0.0
3 EUOF (%)	7.0	7.0	7.0	7.0	7.0	7.0
4 EUOR (%)	7.0	7.0	7.0	7.0	7.0	7.0
5 PH	744	672	744	720	744	720
6 SH	744	672	744	720	744	720
7 RSH	0	0	0	0	0	0
8 UH	0	0	0	0	0	0
9 POH	0	0	0	0	0	0
10 FOH & EFOH	15	13	15	14	15	14
11 MOH & EMOH	37	34	37	36	37	36
12 Oper Mbtu	4,703,763	4,456,213	5,641,416	5,246,892	5,137,234	4,251,244
13 Net Gen (MWH)	681,606	649,499	837,378	774,449	752,598	611,338
14 ANOHR (Btu/KWH)	6,901	6,861	6,737	6,775	6,826	6,954
15 NOF (%)	78.2	82.5	96.0	91.8	86.3	72.4
16 NSC (MW)	1,172	1,172	1,172	1,172	1,172	1,172
17 ANOHR Equation	-9.2 x NOF + 7620					

West County 2	Jul '17	Aug '17	Sep '17	Oct '17	Nov '17	Dec '17	Total
1 EAF (%)	93.0	93.0	93.0	93.0	93.0	93.0	93.0
2 EPOF (%)	0.0	0.0	0.0	0.0	0.0	0.0	0.0
3 EUOF (%)	7.0	7.0	7.0	7.0	7.0	7.0	7
4 EUOR (%)	7.0	7.0	7.0	7.0	7.0	7.0	7.0
5 PH	744	744	720	744	720	744	8,760
6 SH	744	744	720	744	720	744	8,760
7 RSH	0	0	0	0	0	0	0
8 UH	0	0	0	0	0	0	0
9 POH	0	0	0	0	0	0	0
10 FOH & EFOH	15	15	14	15	14	15	175
11 MOH & EMOH	37	37	36	37	36	37	438
12 Oper Mbtu	3,674,038	4,005,921	3,836,577	4,040,146	4,528,264	5,078,307	54,723,060
13 Net Gen (MWH)	519,519	570,888	546,132	576,176	655,795	742,877	7,918,255
14 ANOHR (Btu/KWH)	7,072	7,017	7,025	7,012	6,905	6,836	6,911
15 NOF (%)	59.6	65.5	64.7	66.1	77.7	85.2	77.1
16 NSC (MW)	1,172	1,172	1,172	1,172	1,172	1,172	1,172
17 ANOHR Equation	-9.2 x NOF + 7620						

## ESTIMATED UNIT PERFORMANCE DATA

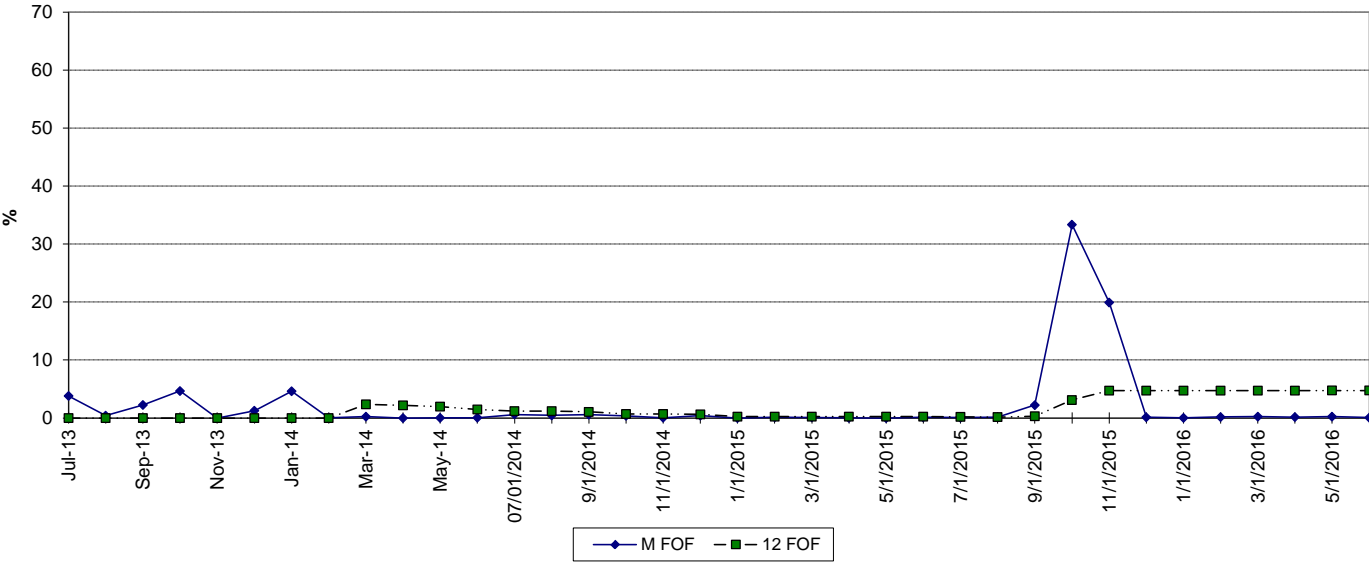
## FLORIDA POWER &amp; LIGHT

PERIOD OF: JANUARY THROUGH DECEMBER, 2017

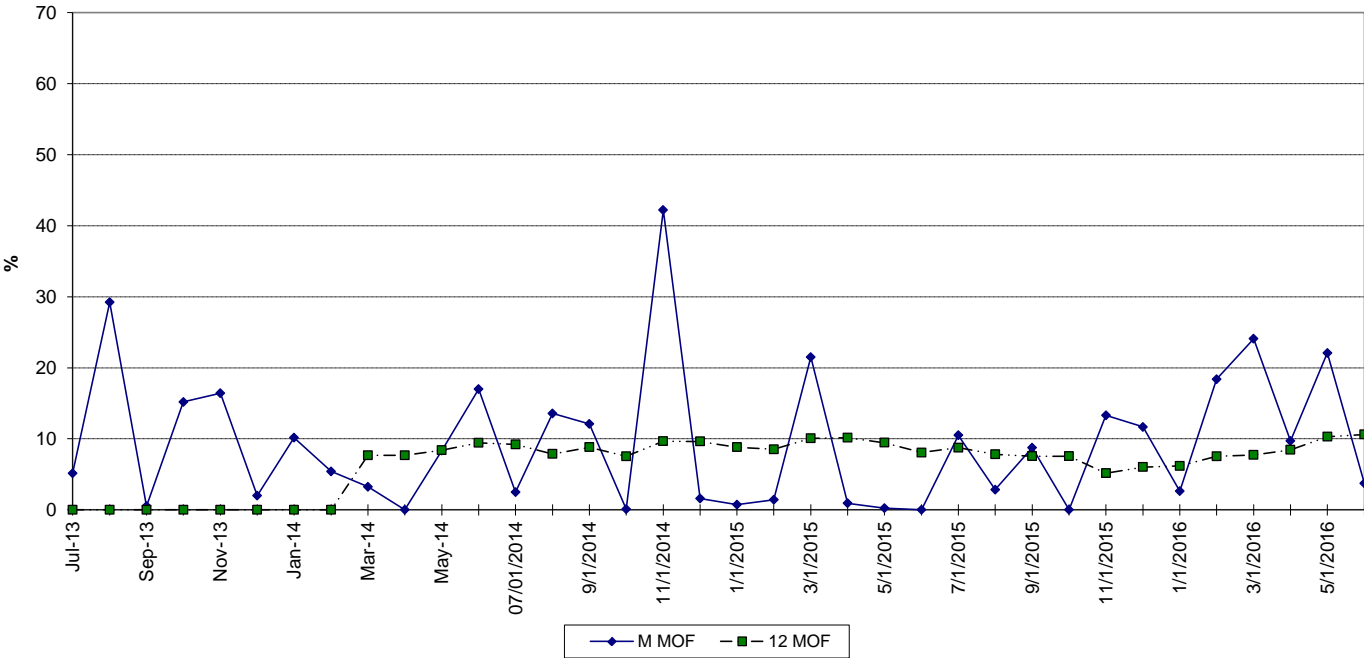
West County 3	Jan '17	Feb '17	Mar '17	Apr '17	May '17	Jun '17
1 EAF (%)	91.8	91.8	91.8	68.3	62.1	91.8
2 EPOF (%)	0.0	0.0	0.0	25.6	32.3	0.0
3 EUOF (%)	8.2	8.2	8.2	6.1	5.6	8.2
4 EUOR (%)	8.2	8.2	8.2	6.1	5.6	8.2
5 PH	744	672	744	720	744	720
6 SH	744	672	744	720	744	720
7 RSH	0	0	0	0	0	0
8 UH	0	0	0	0	0	0
9 POH	0	0	0	0	0	0
10 FOH & EFOH	18	16	18	13	12	17
11 MOH & EMOH	43	39	43	31	29	42
12 Oper Mbtu	4,443,852	4,262,503	5,455,333	3,516,030	3,163,271	4,267,719
13 Net Gen (MWH)	638,668	614,105	791,316	501,645	449,456	613,090
14 ANOHR (Btu/KWH)	6,958	6,941	6,894	7,009	7,038	6,961
15 NOF (%)	72.6	77.3	90.0	58.9	51.1	72.0
16 NSC (MW)	1,182	1,182	1,182	1,182	1,182	1,182
17 ANOHR Equation	-3.7 x NOF + 7227					

West County 3	Jul '17	Aug '17	Sep '17	Oct '17	Nov '17	Dec '17	Total
1 EAF (%)	91.8	91.8	91.8	77.9	2.0	60.2	76.1
2 EPOF (%)	0.0	0.0	0.0	15.1	97.8	34.4	17.1
3 EUOF (%)	8.2	8.2	8.2	7.0	0.2	5.4	6.8
4 EUOR (%)	8.2	8.2	8.2	7.0	2.7	5.4	7.4
5 PH	744	744	720	744	720	744	8,760
6 SH	744	744	720	744	48	744	8,088
7 RSH	0	0	0	0	0	0	0
8 UH	0	0	0	0	672	0	672
9 POH	0	0	0	0	672	0	672
10 FOH & EFOH	18	18	17	15	0	12	175
11 MOH & EMOH	43	43	42	37	1	28	420
12 Oper Mbtu	3,948,820	4,344,837	4,100,893	3,575,321	126,074	3,313,035	44,562,589
13 Net Gen (MWH)	565,005	623,810	588,279	509,886	17,727	471,338	6,384,325
14 ANOHR (Btu/KWH)	6,989	6,965	6,971	7,012	7,112	7,029	6,980
15 NOF (%)	64.2	70.9	69.1	58.0	31.2	53.6	66.8
16 NSC (MW)	1,182	1,182	1,182	1,182	1,182	1,182	1,182
17 ANOHR Equation	-3.7 x NOF + 7227						

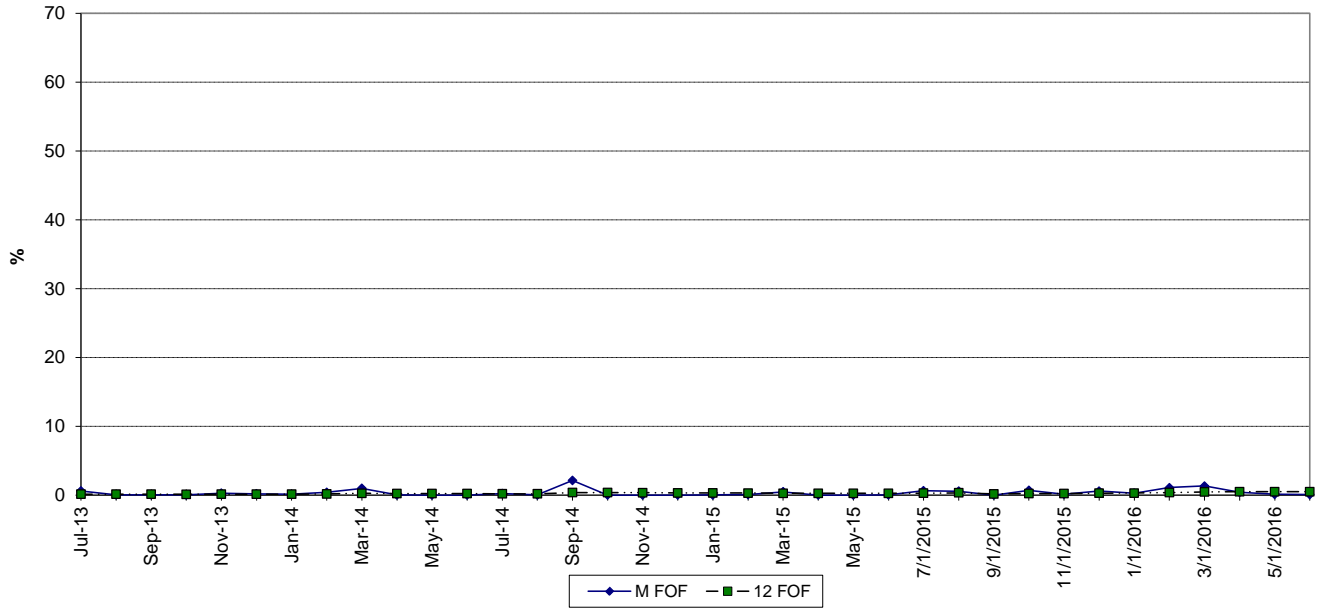
### CAPE CANAVERAL 3 FORCED OUTAGE FACTOR



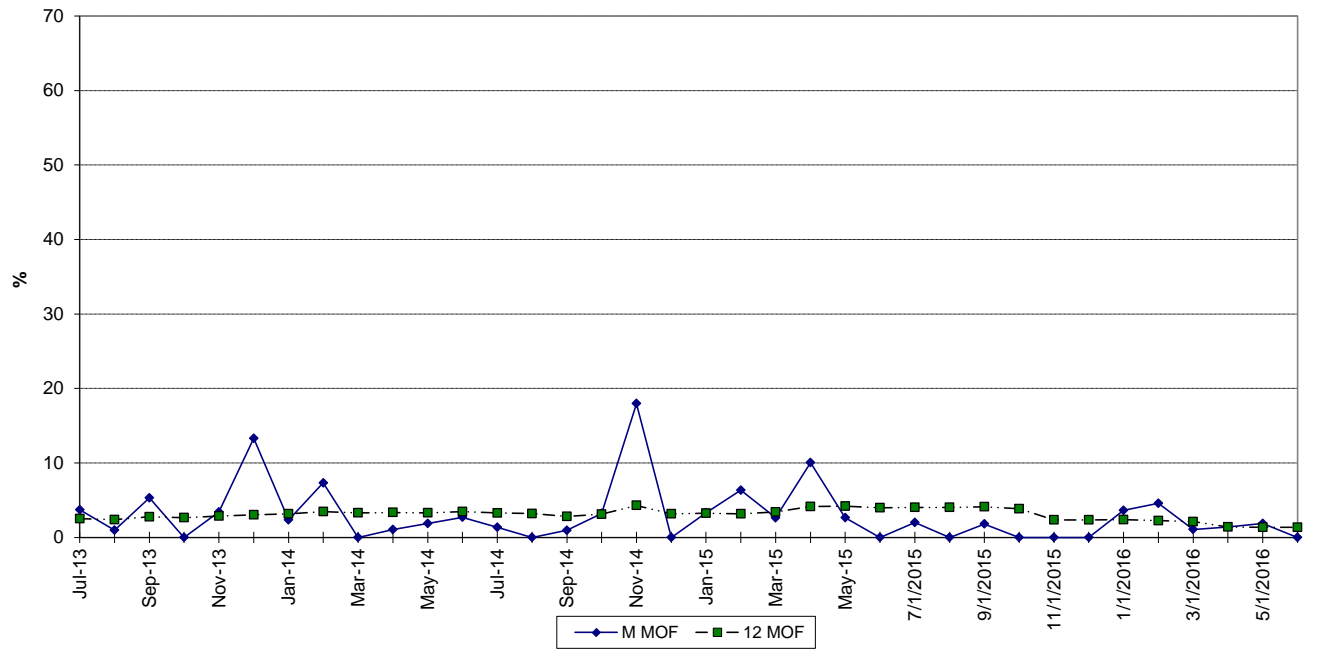
### MAINTENANCE OUTAGE FACTOR



### FT. MYERS 2 FORCED OUTAGE FACTOR

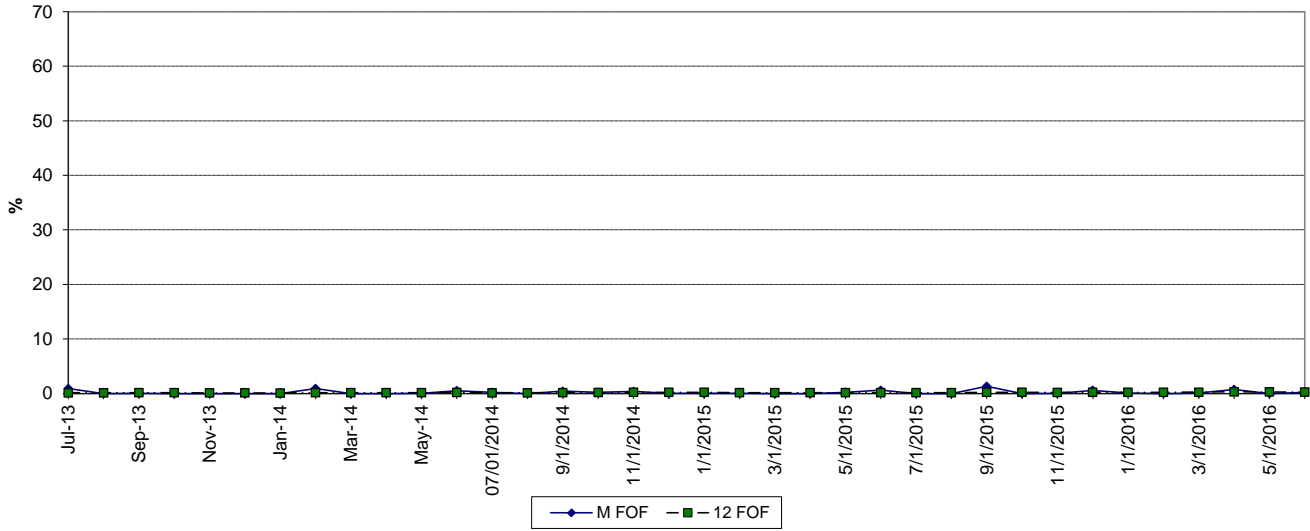


### MAINTENANCE OUTAGE FACTOR

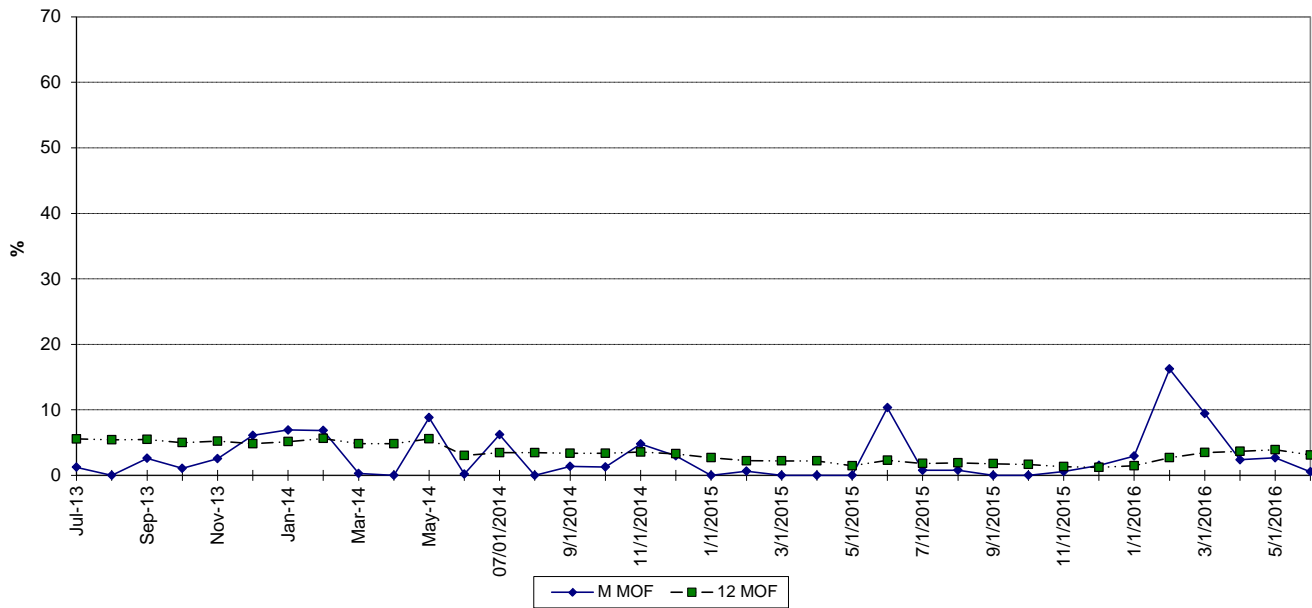




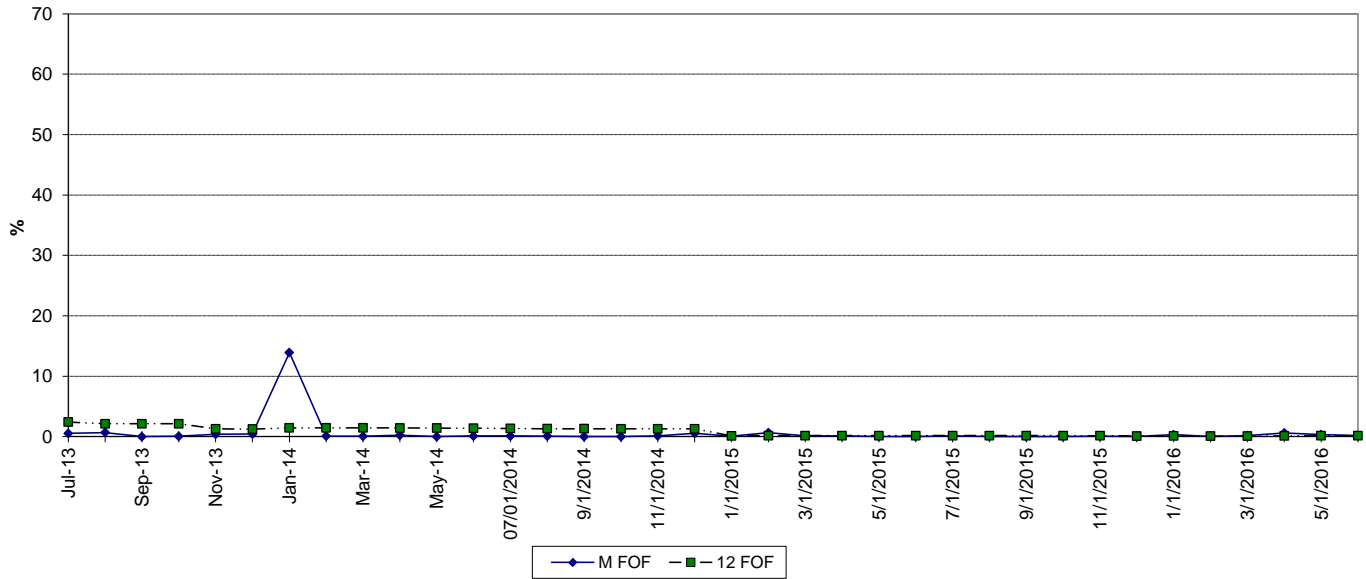
### MANATEE 3 FORCED OUTAGE FACTOR



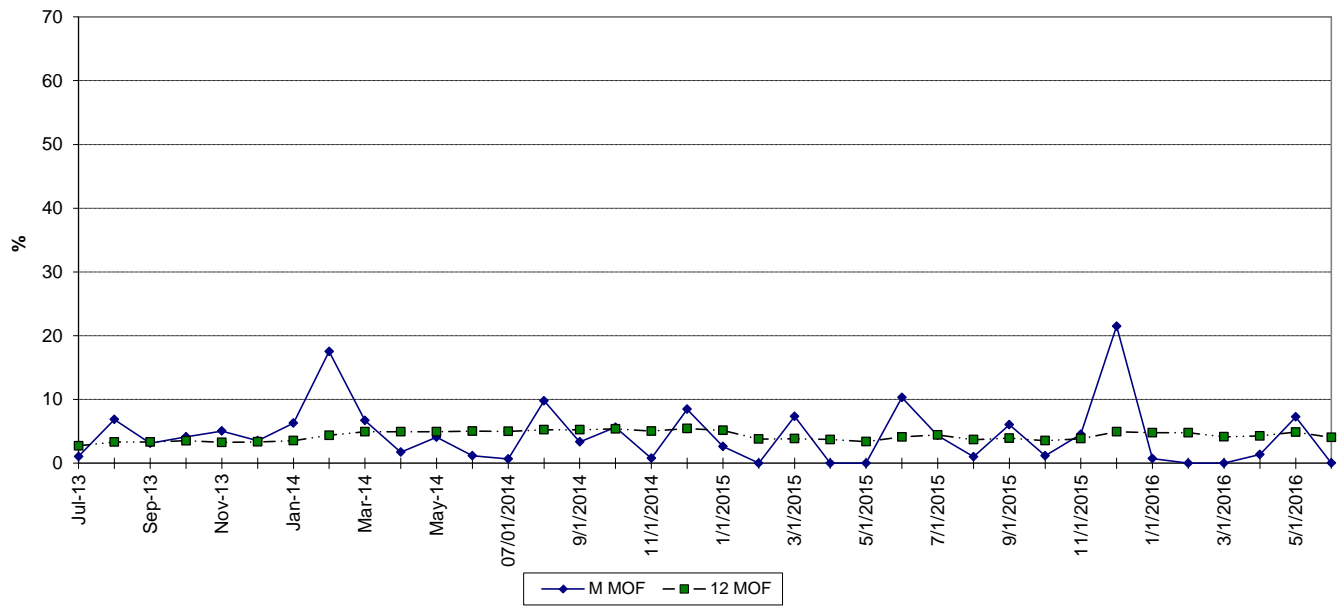
### MAINTENANCE OUTAGE FACTOR



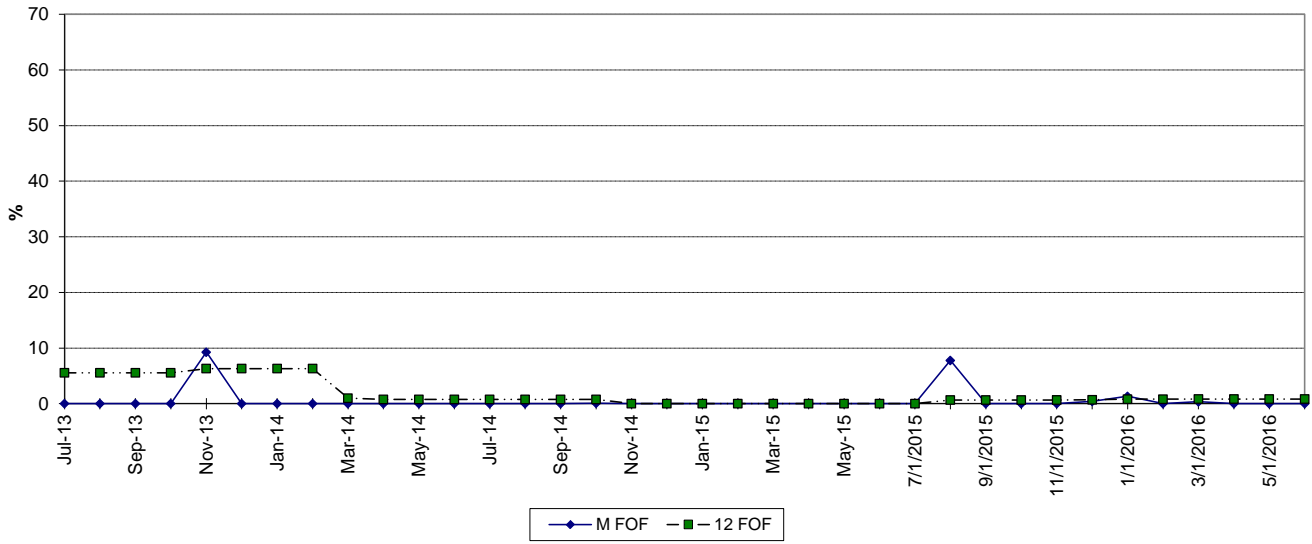
### MARTIN 8 FORCED OUTAGE FACTOR



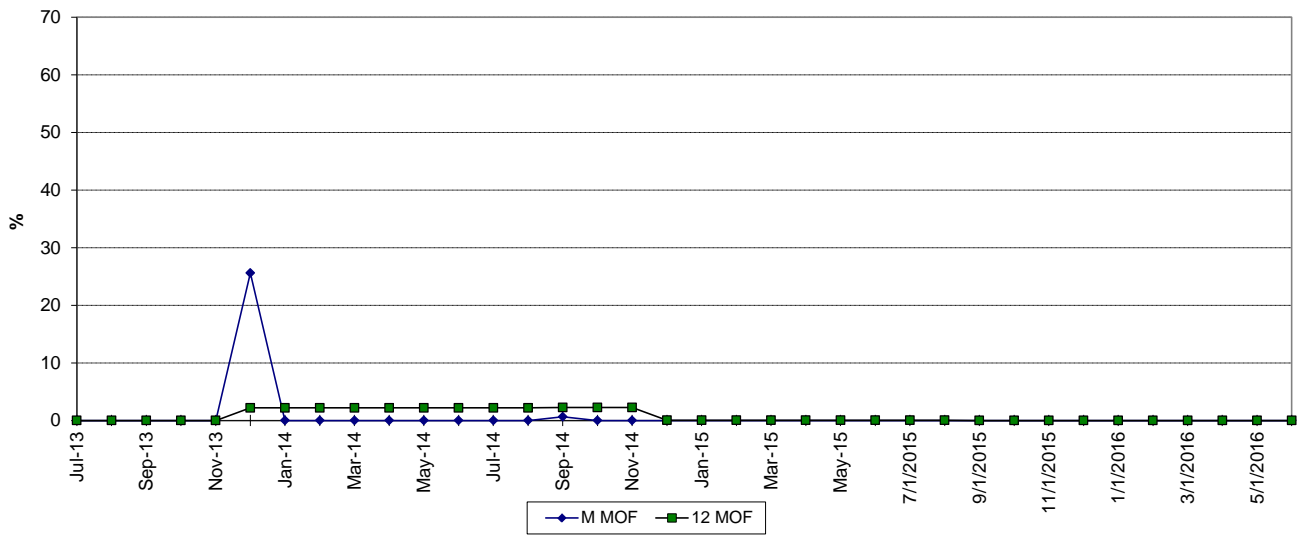
### MAINTENANCE OUTAGE FACTOR



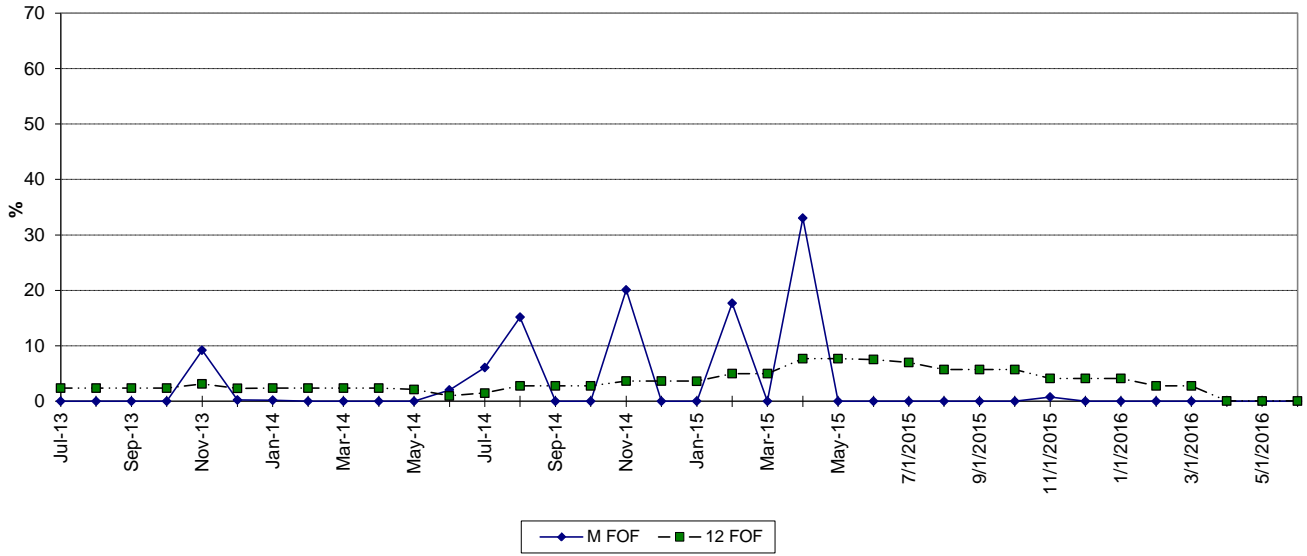
### ST. LUCIE 1 FORCED OUTAGE FACTOR



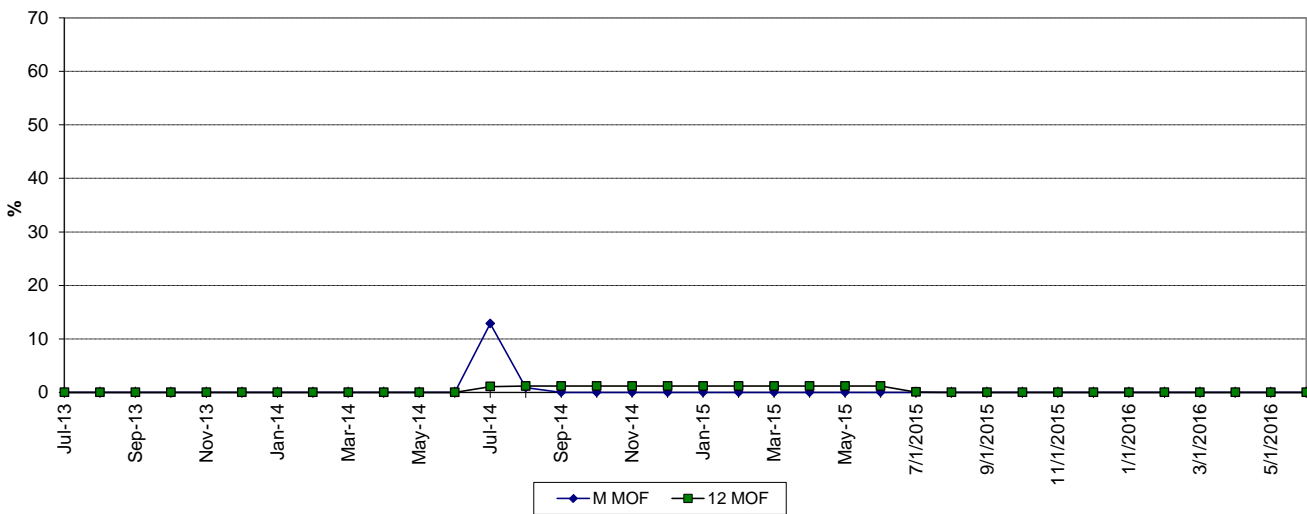
### MAINTENANCE OUTAGE FACTOR



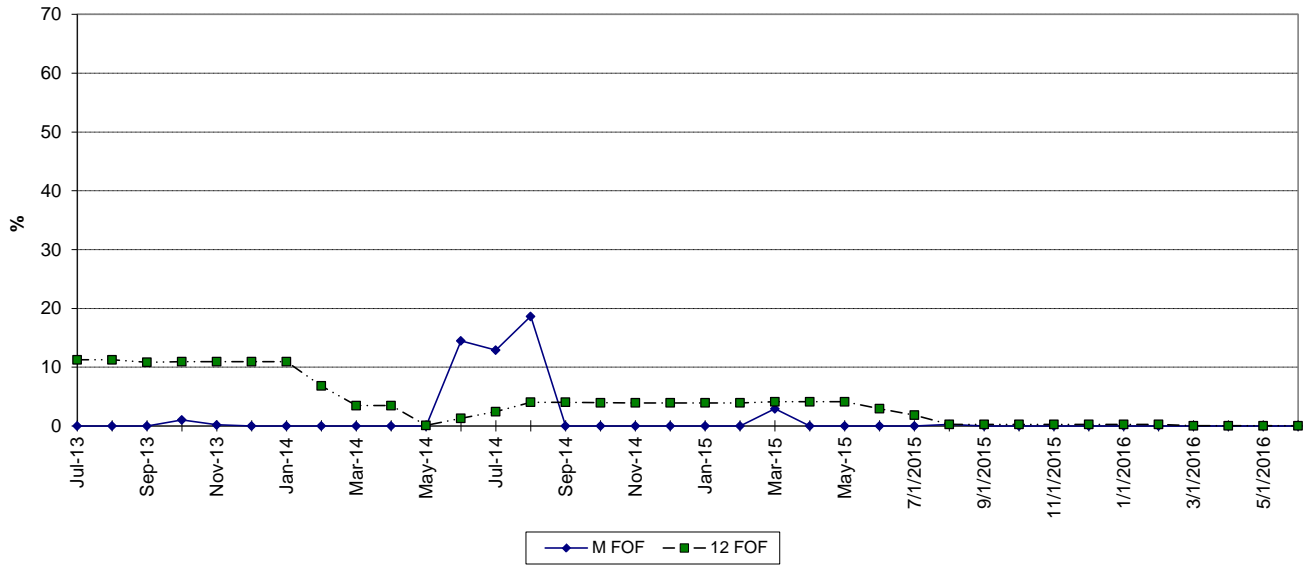
## ST. LUCIE 2 FORCED OUTAGE FACTOR



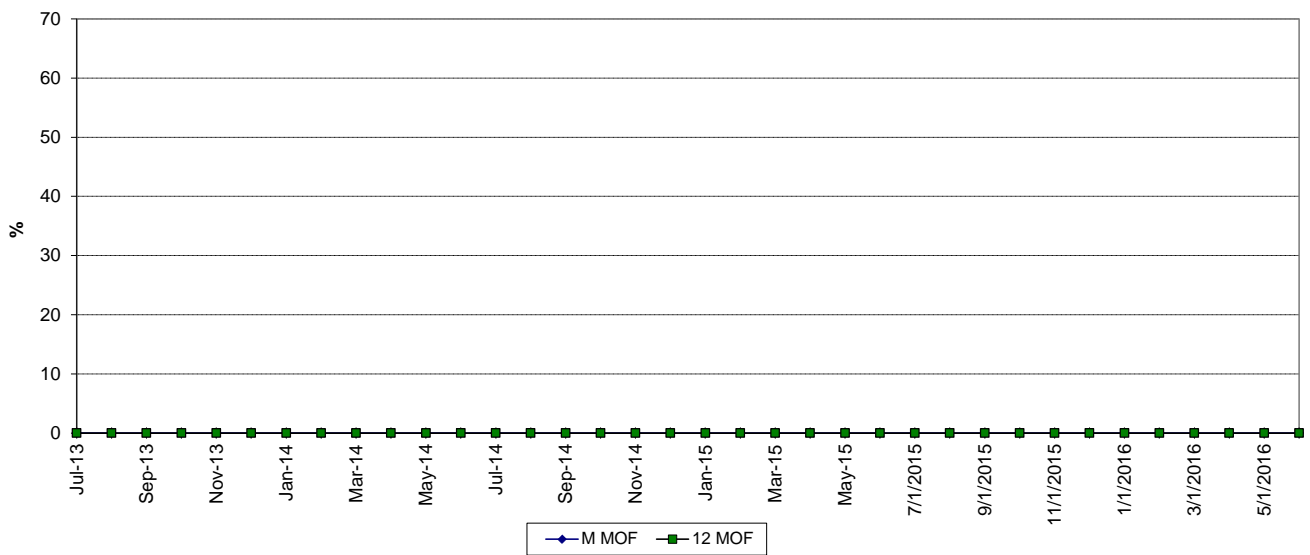
## MAINTENANCE OUTAGE FACTOR



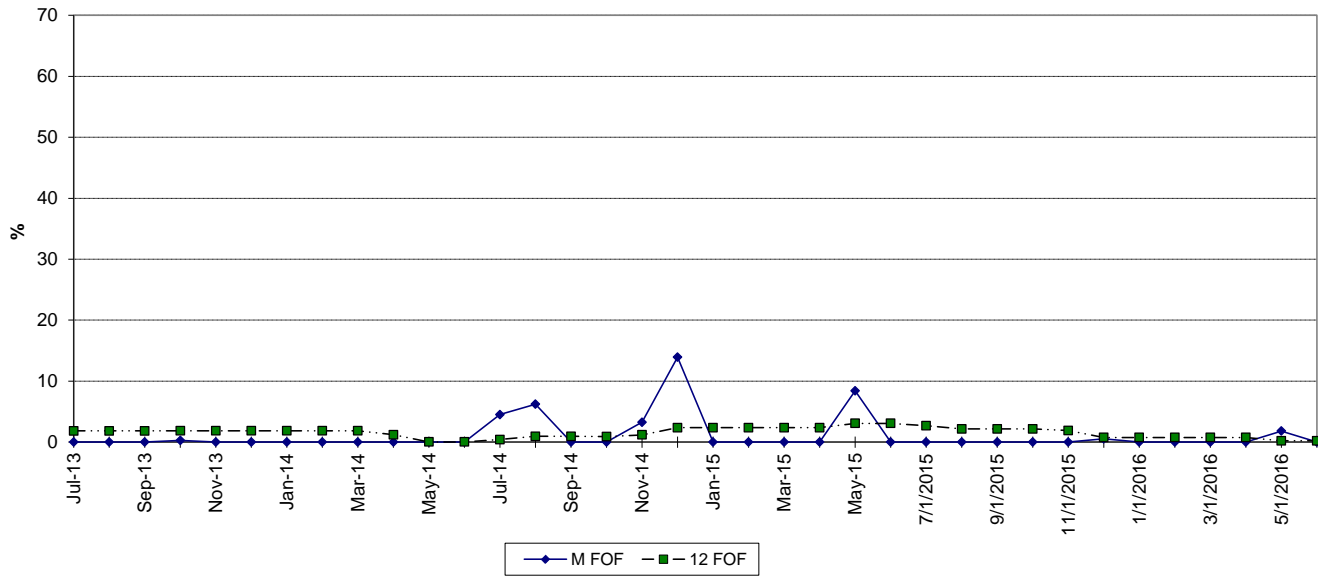
### TURKEY POINT 3 FORCED OUTAGE FACTOR



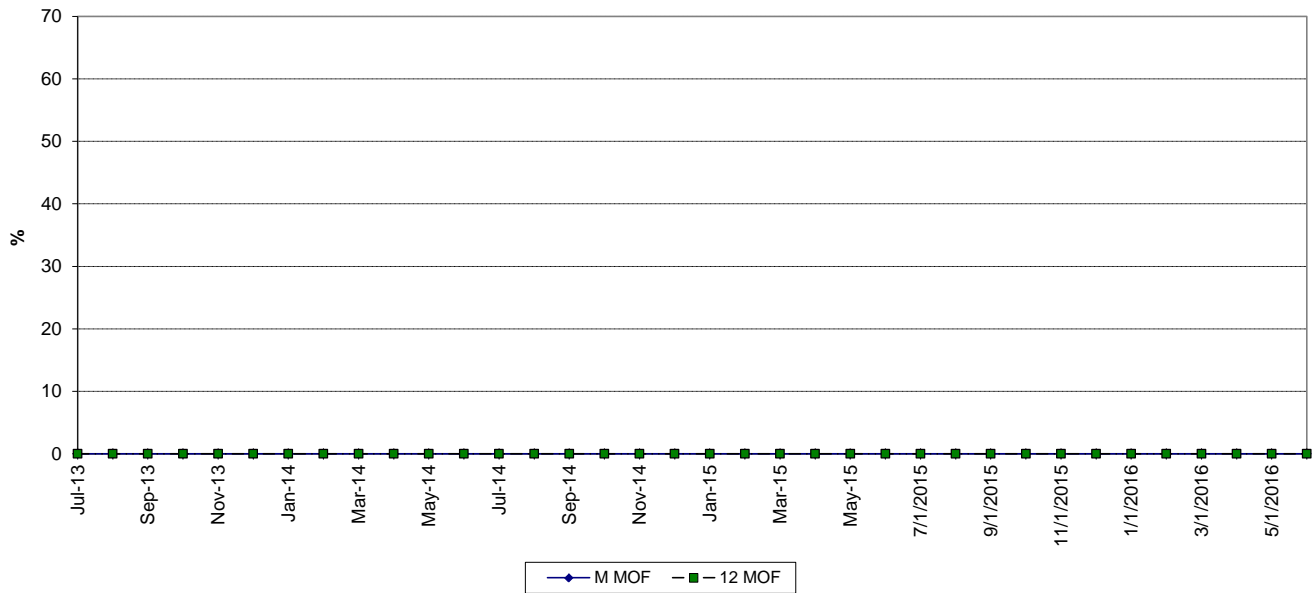
### MAINTENANCE OUTAGE FACTOR



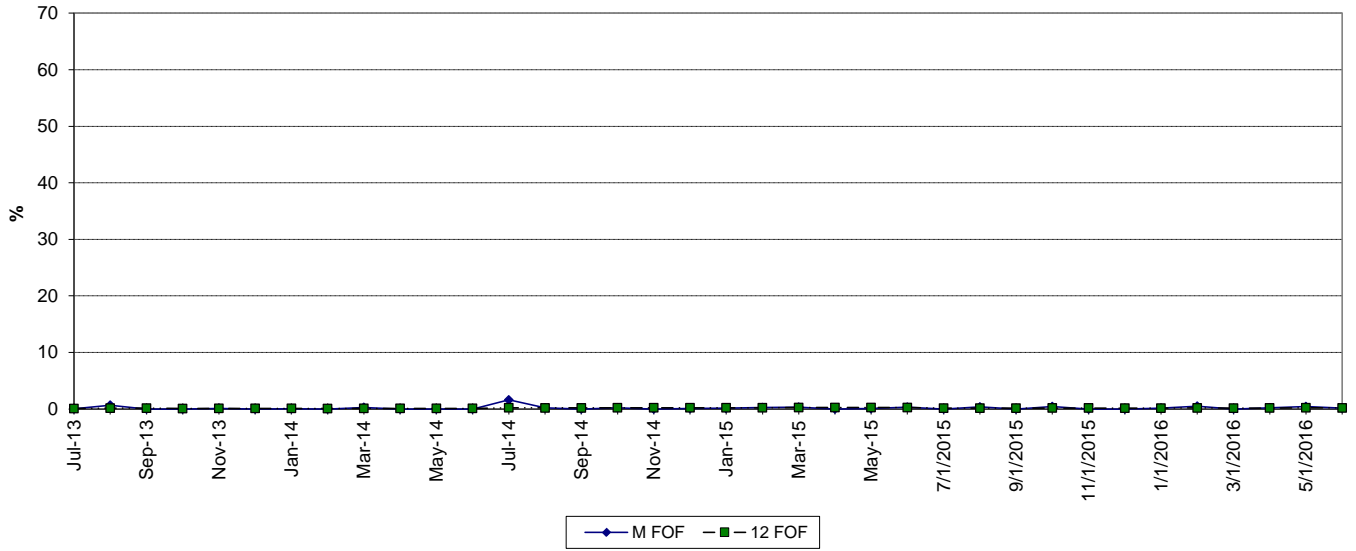
### TURKEY POINT 4 FORCED OUTAGE FACTOR



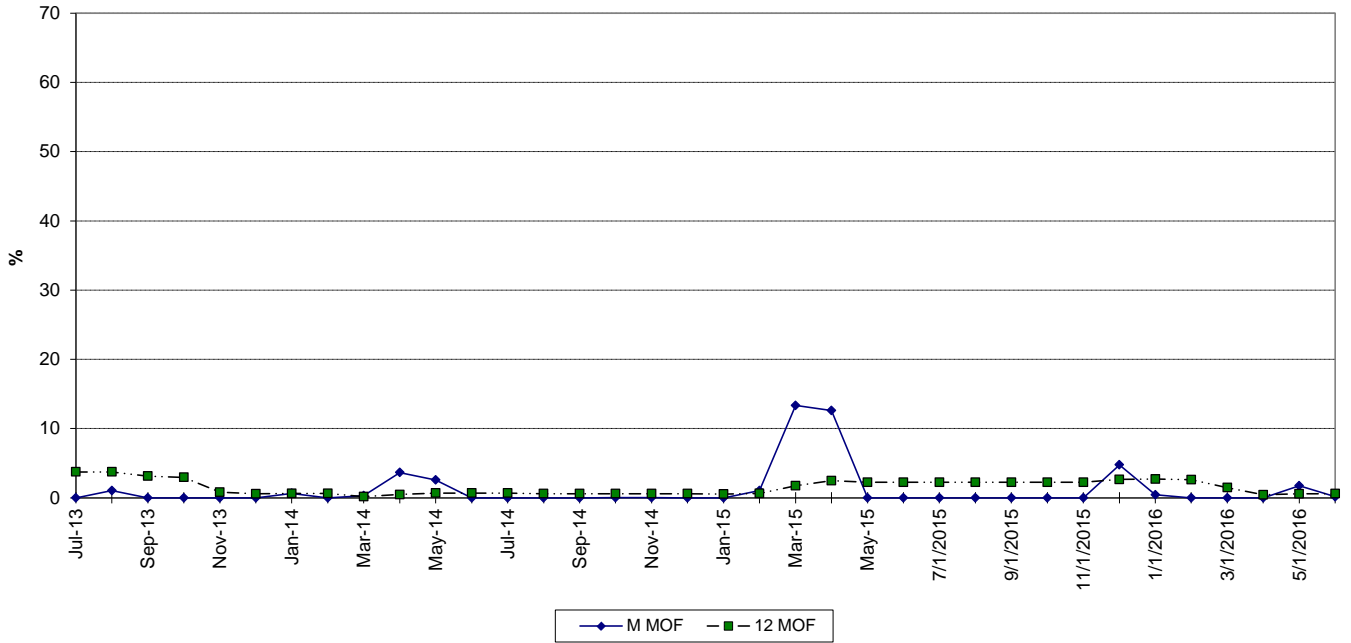
### MAINTENANCE OUTAGE FACTOR



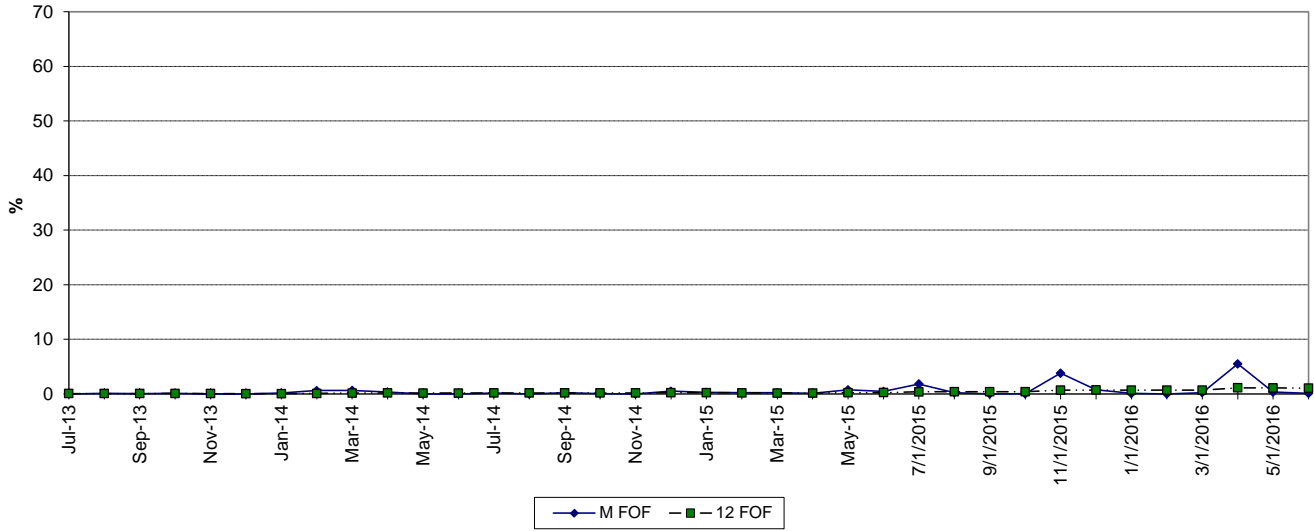
### TURKEY POINT 5 FORCED OUTAGE FACTOR



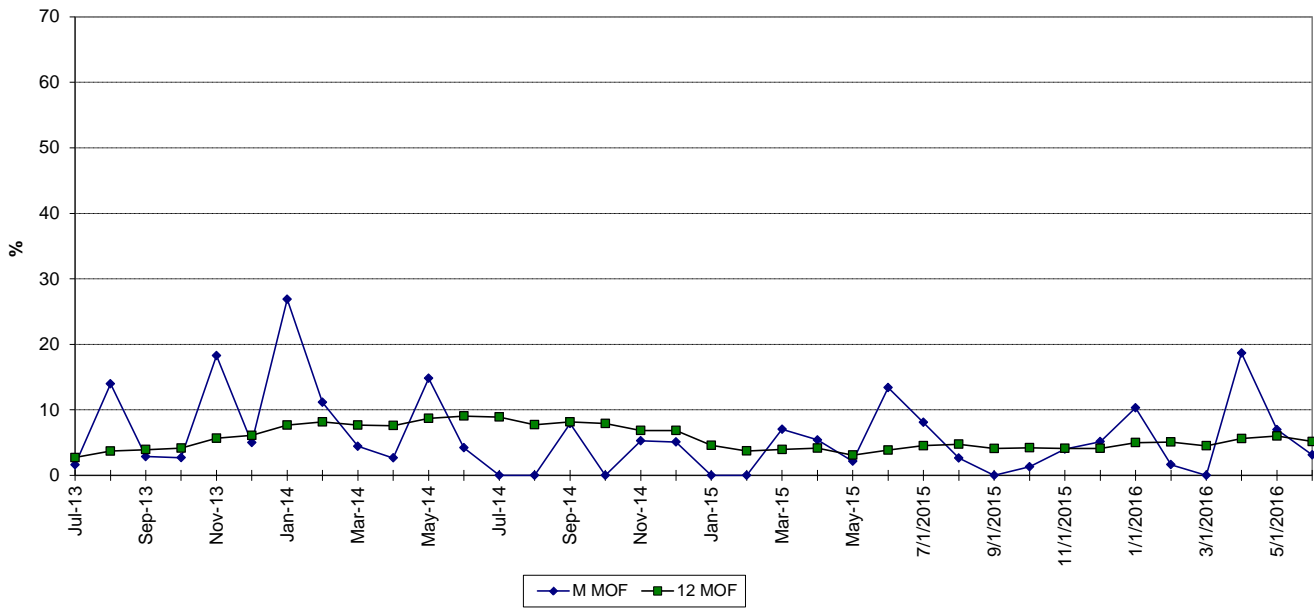
### MAINTENANCE OUTAGE FACTOR



# WEST COUNTY 1 FORCED OUTAGE FACTOR

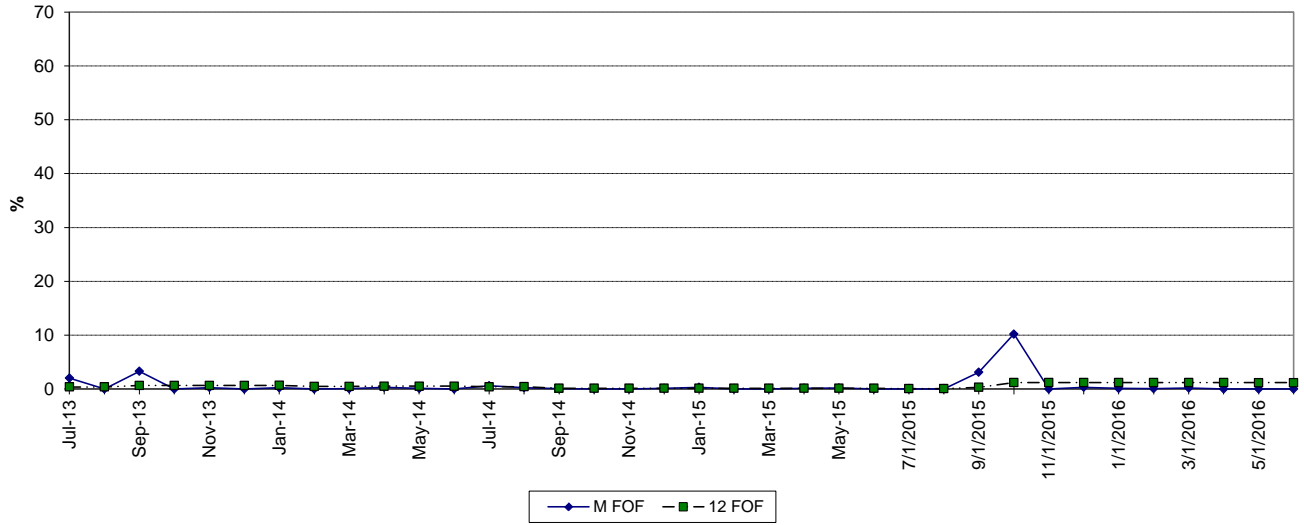


# MAINTENANCE OUTAGE FACTOR

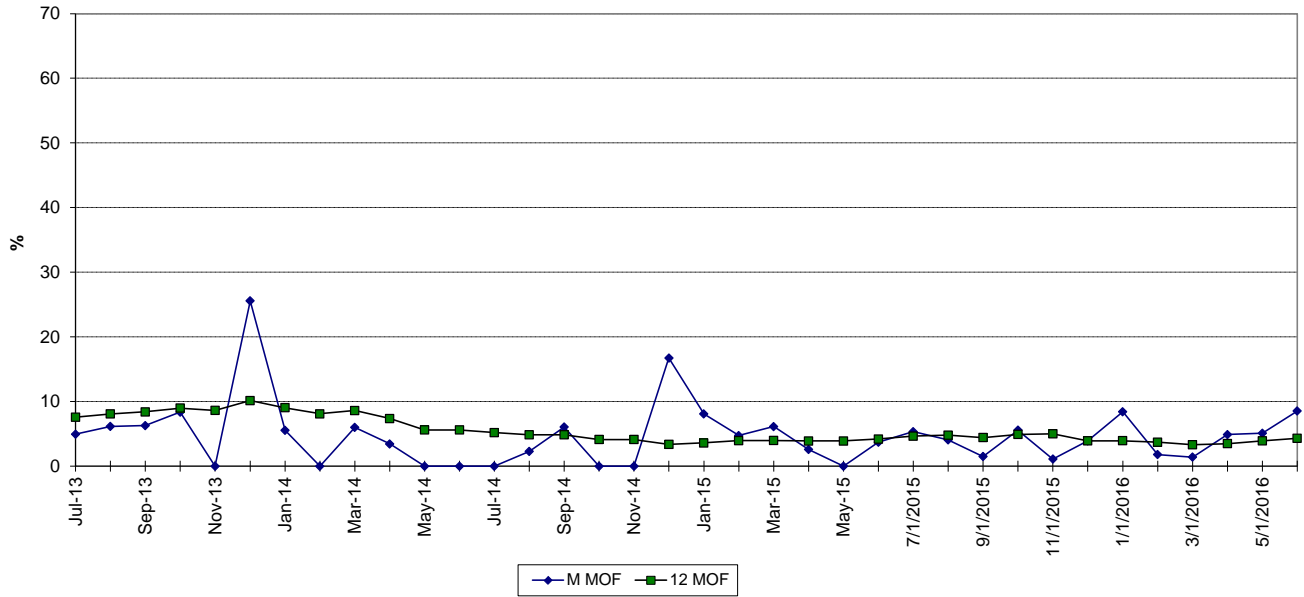




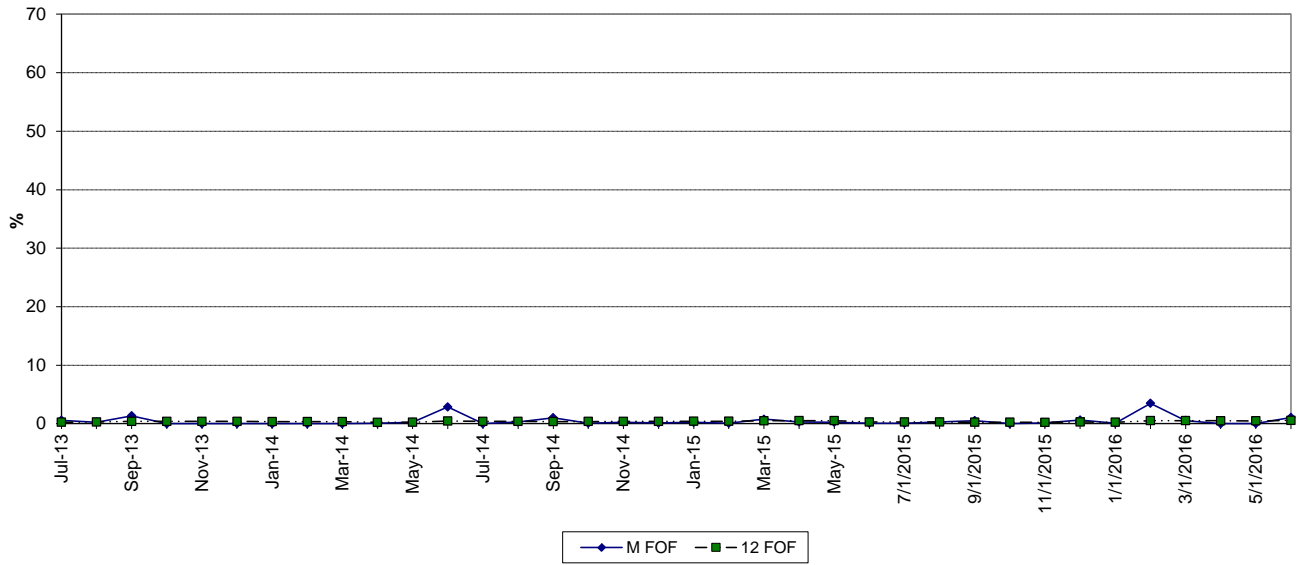
### WEST COUNTY 2 FORCED OUTAGE FACTOR



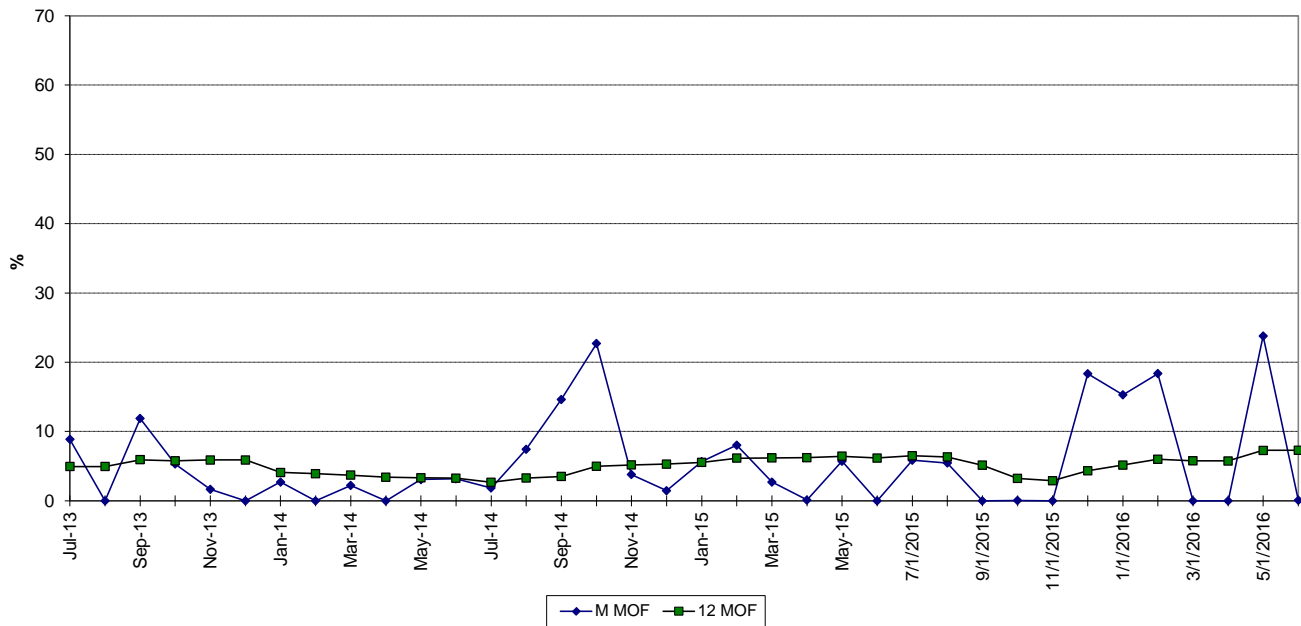
### MAINTENANCE OUTAGE FACTOR



### WEST COUNTY 3 FORCED OUTAGE FACTOR



### MAINTENANCE OUTAGE FACTOR



## PLANNED OUTAGE SCHEDULE (ESTIMATED)

## FLORIDA POWER &amp; LIGHT COMPANY

PERIOD OF: JANUARY THROUGH DECEMBER, 2017

PLANT/UNIT	PLAN OUTAGE	REASON FOR OUTAGE	LR MW*
Cape Canaveral 3	02/15/2017 - 03/23/2017	CT31 - HGP / GEN MINOR / HRSG INSP	410
Cape Canaveral 3	03/25/2017 - 04/30/2017	CT32 - HGP / GEN MINOR / HRSG INSP	410
Cape Canaveral 3	11/13/2017 - 12/19/2017	CT33 - GP / GEN MINOR / HRSG INSP	410
Ft. Myers 2	11/18/2017 - 12/15/2017	ST TURBINE VALVES / BOP / GEN MINOR	534
Manatee 3	03/04/2017 - 05/02/2017	CT3C - .05 UPGRADE / GEN MAJOR / Rewedge / BOP INSP	290
Manatee 3	03/18/2017 - 05/16/2017	CT3D - .05 UPGRADE / GEN MAJOR / Rewedge / BOP INSP	290
Manatee 3	03/25/2017 - 05/23/2017	CT3A - .05 UPGRADE / GEN MAJOR / Rewedge / BOP INSP	290
Manatee 3	03/25/2017 - 06/05/2017	ST MAJOR / GEN MAJOR (REWEDGE) / TURBINE VLVS	1,158
Manatee 3	05/20/2017 - 07/18/2017	CT3B - .05 UPGRADE / GEN MAJOR / Rewedge / BOP INSP	290
Martin 8	01/01/2017 - 02/07/2017	CT8A - Continued .05 Upgrade/CONTROLS / HOT GAS PATH / HRSG INSP	297
Martin 8	01/07/2017 - 03/07/2017	CT8B - .05 Upgrade/CONTROLS / HOT GAS PATH / HRSG INSP	297
Martin 8	01/07/2017 - 03/24/2017	GEN MAJOR / ST80 TURB VLVS / ACT / HP/IP/LP/ CONTROLS / CT8C&D HRSG INSP	1,187
St. Lucie 1	NONE		
St. Lucie 2	02/20/2017 - 03/28/2017	REFUELING	860
Turkey Point 3	03/27/2017 - 04/27/2017	REFUELING	811
Turkey Point 4	10/02/2017 - 11/01/2017	REFUELING	821
Turkey Point 5	09/09/2017 - 11/07/2017	CT5A - .05 UPGRADE / RECOAT INLET FILTER HOUSE / HRSG INSP	272
Turkey Point 5	09/23/2017 - 11/21/2017	CT5B - .05 UPGRADE / RECOAT INLET FILTER HOUSE / HRSG INSP	272
Turkey Point 5	10/28/2017 - 12/26/2017	CT5C - .05 UPGRADE / RECOAT INLET FILTER HOUSE / HRSG INSP	289
Turkey Point 5	11/04/2017 - 11/13/2017	BALANCE OF PLANT OUTAGE	1,155
Turkey Point 5	11/11/2017 - 01/09/2018	CT5D - .05 UPGRADE / RECOAT INLET FILTER HOUSE / HRSG INSP	289
West County 1	02/25/2017 - 03/06/2017	CTA, B & C HRSG INSP / BOP	1,208
West County 2	NONE		
West County 3	04/08/2017 - 05/30/2017	CTB MAJOR / HRSG INSP	399
West County 3	10/21/2017 - 12/12/2017	CTA MAJOR / HRSG INSP	399
West County 3	10/29/2017 - 12/20/2017	CTC MAJOR / HRSG INSP	399
West County 3	11/01/2017 - 11/28/2017	ST VALVES / BOP INSP	1,208

\*Approximate load reduction MW are based on the unit's estimated MW rating during the outage period