

EXHIBIT TO THE TESTIMONY

OF

BRIAN S. BUCKLEY

DOCUMENT NO. 1

GPIF SCHEDULES
JANUARY 2018 - DECEMBER 2018

TAMPA ELECTRIC COMPANY
GENERATING PERFORMANCE INCENTIVE FACTOR
JANUARY 2018 - DECEMBER 2018
TARGETS
TABLE OF CONTENTS

<u>SCHEDULE</u>	<u>PAGE</u>
GPIF REWARD / PENALTY TABLE	2
GPIF CALCULATION OF MAXIMUM ALLOWED INCENTIVE DOLLARS	3
GPIF TARGET AND RANGE SUMMARY	4
COMPARISON OF GPIF TARGETS VS PRIOR PERIOD ACTUAL PERFORMANCE	5
DERIVATION OF WEIGHTING FACTORS	6
GPIF TARGET AND RANGE SUMMARY	7 - 13
ESTIMATED UNIT PERFORMANCE DATA	14 - 20
ESTIMATED PLANNED OUTAGE SCHEDULE	21
CRITICAL PATH METHOD DIAGRAMS	22 - 23
FORCED & MAINTENANCE OUTAGE FACTOR GRAPHS	24 - 30
HEAT RATE VS NET OUTPUT FACTOR GRAPHS	31 - 37
GENERATING UNITS IN GPIF (TABLE 4.2 IN THE MANUAL)	38
UNIT RATINGS AS OF JULY 2017	39
PROJECTED PERCENT GENERATION BY UNIT	40

**TAMPA ELECTRIC COMPANY
 GENERATING PERFORMANCE INCENTIVE FACTOR
 REWARD / PENALTY TABLE
 JANUARY 2018 - DECEMBER 2018**

GENERATING PERFORMANCE INCENTIVE POINTS (GPIP)	FUEL SAVINGS / (LOSS) (\$000)	GENERATING PERFORMANCE INCENTIVE FACTOR (\$000)
+10	29,174.8	10,237.1
+9	26,257.3	9,213.4
+8	23,339.8	8,189.7
+7	20,422.4	7,165.9
+6	17,504.9	6,142.2
+5	14,587.4	5,118.5
+4	11,669.9	4,094.8
+3	8,752.4	3,071.1
+2	5,835.0	2,047.4
+1	2,917.5	1,023.7
0	0.0	0.0
-1	(3,217.7)	(1,023.7)
-2	(6,435.4)	(2,047.4)
-3	(9,653.1)	(3,071.1)
-4	(12,870.8)	(4,094.8)
-5	(16,088.5)	(5,118.5)
-6	(19,306.2)	(6,142.2)
-7	(22,523.9)	(7,165.9)
-8	(25,741.6)	(8,189.7)
-9	(28,959.3)	(9,213.4)
-10	(32,177.0)	(10,237.1)

**TAMPA ELECTRIC COMPANY
 GENERATING PERFORMANCE INCENTIVE FACTOR
 CALCULATION OF MAXIMUM ALLOWED INCENTIVE DOLLARS
 JANUARY 2018 - DECEMBER 2018**

Line 1	Beginning of period balance of common equity:		\$	2,478,918,000	
	End of month common equity:				
Line 2	Month of January	2018	\$	2,416,168,000	
Line 3	Month of February	2018	\$	2,436,806,102	
Line 4	Month of March	2018	\$	2,457,620,487	
Line 5	Month of April	2018	\$	2,499,910,175	
Line 6	Month of May	2018	\$	2,521,263,574	
Line 7	Month of June	2018	\$	2,542,799,367	
Line 8	Month of July	2018	\$	2,479,340,232	
Line 9	Month of August	2018	\$	2,500,517,930	
Line 10	Month of September	2018	\$	2,521,876,520	
Line 11	Month of October	2018	\$	2,564,340,396	
Line 12	Month of November	2018	\$	2,586,244,137	
Line 13	Month of December	2018	\$	2,608,334,972	
Line 14	(Summation of line 1 through line 13 divided by 13)		\$	2,508,779,992	
Line 15	25 Basis points			0.0025	
Line 16	Revenue Expansion Factor			61.27%	
Line 17	Maximum Allowed Incentive Dollars (line 14 times line 15 divided by line 16)		\$	10,237,065	
Line 18	Jurisdictional Sales			19,544,119	MWH
Line 19	Total Sales			19,544,119	MWH
Line 20	Jurisdictional Separation Factor (line 18 divided by line 19)			100.00%	
Line 21	Maximum Allowed Jurisdictional Incentive Dollars (line 17 times line 20)		\$	10,237,065	
Line 22	Incentive Cap (50% of projected fuel savings at 10 GPIF-point level from Sheet No. 3.515)		\$	14,587,395	
Line 23	Maximum Allowed GPIF Reward (at 10 GPIF-point level) (the lesser of line 21 and line 22)		\$	10,237,065	

Note: Line 22 and 23 are as approved by Commission order PSC-13-0665-FOF-EI dated 12/18/13 effective 1/1/14.

TAMPA ELECTRIC COMPANY
 GPIF TARGET AND RANGE SUMMARY
 JANUARY 2018 - DECEMBER 2018

EQUIVALENT AVAILABILITY

<u>PLANT / UNIT</u>	<u>WEIGHTING FACTOR (%)</u>	<u>EAF TARGET (%)</u>	<u>EAF RANGE</u>		<u>MAX. FUEL SAVINGS (\$000)</u>	<u>MAX. FUEL LOSS (\$000)</u>
			<u>MAX. (%)</u>	<u>MIN. (%)</u>		
BIG BEND 2	2.11%	61.5	68.2	48.1	615.6	(1,077.7)
BIG BEND 3	3.70%	66.7	72.4	55.4	1,079.4	(3,189.4)
BIG BEND 4	5.05%	78.7	82.0	72.1	1,473.1	(1,845.8)
POLK 1	0.73%	74.4	77.0	69.4	211.9	(380.9)
POLK 2	4.83%	83.2	85.7	78.2	1,408.9	(1,372.7)
BAYSIDE 1	2.64%	82.5	83.8	80.0	770.2	(385.1)
BAYSIDE 2	5.16%	77.3	79.1	73.9	1,505.7	(1,815.5)
GPIF SYSTEM	24.22%					

AVERAGE NET OPERATING HEAT RATE

<u>PLANT / UNIT</u>	<u>WEIGHTING FACTOR (%)</u>	<u>ANOHR Btu/kwh</u>	<u>TARGET NOF</u>	<u>ANOHR RANGE</u>		<u>MAX. FUEL SAVINGS (\$000)</u>	<u>MAX. FUEL LOSS (\$000)</u>
				<u>MIN.</u>	<u>MAX.</u>		
BIG BEND 2	2.67%	11,320	60.3	10,843	11,798	778.3	(778.3)
BIG BEND 3	4.96%	10,619	80.8	10,252	10,987	1,448.4	(1,448.4)
BIG BEND 4	7.36%	10,448	86.4	10,066	10,830	2,146.5	(2,146.5)
POLK 1	3.52%	9,978	99.1	9,644	10,312	1,028.0	(1,028.0)
POLK 2	45.39%	7,382	76.4	6,827	7,936	13,242.8	(13,242.8)
BAYSIDE 1	4.66%	7,489	62.8	7,360	7,619	1,359.6	(1,359.6)
BAYSIDE 2	7.22%	7,676	52.3	7,447	7,905	2,106.5	(2,106.5)
GPIF SYSTEM	75.78%						

**TAMPA ELECTRIC COMPANY
COMPARISON OF GPIF TARGETS VS PRIOR PERIOD ACTUAL PERFORMANCE**

EQUIVALENT AVAILABILITY (%)

PLANT / UNIT	WEIGHTING FACTOR (%)	NORMALIZED WEIGHTING FACTOR	TARGET PERIOD JAN 18 - DEC 18			ACTUAL PERFORMANCE JAN 16 - DEC 16			ACTUAL PERFORMANCE JAN 15 - DEC 15			ACTUAL PERFORMANCE JAN 14 - DEC 14		
			POF	EUOF	EUOR	POF	EUOF	EUOR	POF	EUOF	EUOR	POF	EUOF	EUOR
BIG BEND 2	2.11%	8.7%	6.6	31.9	34.2	22.5	22.5	29.5	7.5	46.8	50.5	8.4	10.6	11.6
BIG BEND 3	3.70%	15.3%	6.6	26.7	28.6	12.6	33.6	39.7	3.7	24.1	25.0	5.1	15.8	16.7
BIG BEND 4	5.05%	20.9%	6.6	14.7	15.8	6.7	18.8	21.9	3.8	15.1	15.7	20.7	11.2	14.2
POLK 1	0.73%	3.0%	17.3	8.3	10.0	13.3	7.5	11.4	13.5	16.0	19.0	5.0	8.7	10.6
POLK 2	4.83%	19.9%	5.8	11.0	11.7	9.7	9.4	29.1	3.6	3.5	19.2	11.2	0.9	25.1
BAYSIDE 1	2.64%	10.9%	14.8	2.7	3.1	20.0	1.3	1.8	11.8	2.3	2.7	6.2	11.5	14.1
BAYSIDE 2	5.16%	21.3%	18.6	4.0	5.0	7.1	2.9	5.0	7.2	3.7	4.1	5.0	5.4	5.7
GPIF SYSTEM	24.22%	100.0%	10.2	13.5	14.7	11.3	13.9	20.6	6.0	13.1	17.1	10.0	8.5	14.6
GPIF SYSTEM WEIGHTED EQUIVALENT AVAILABILITY (%)			76.3			74.8			80.9			81.5		
			3 PERIOD AVERAGE			3 PERIOD AVERAGE								
			POF	EUOF	EUOR	EA								
			9.1	11.8	17.4	79.1								

AVERAGE NET OPERATING HEAT RATE (Btu/kWh)

PLANT / UNIT	WEIGHTING FACTOR (%)	NORMALIZED WEIGHTING FACTOR	TARGET	ADJUSTED	ADJUSTED	ADJUSTED
			HEAT RATE JAN 18 - DEC 18	ACTUAL PERFORMANCE HEAT RATE JAN 16 - DEC 16	ACTUAL PERFORMANCE HEAT RATE JAN 15 - DEC 15	ACTUAL PERFORMANCE HEAT RATE JAN 14 - DEC 14
BIG BEND 2	2.67%	3.5%	11,320	10,952	10,765	10,810
BIG BEND 3	4.96%	6.6%	10,619	10,395	10,419	10,604
BIG BEND 4	7.36%	9.7%	10,448	10,329	10,331	10,293
POLK 1	3.52%	4.6%	9,978	9,944	10,351	10,207
POLK 2	45.39%	59.9%	7,382	8,604	11,576	12,297
BAYSIDE 1	4.66%	6.1%	7,489	7,521	7,443	7,347
BAYSIDE 2	7.22%	9.5%	7,676	7,723	7,610	7,488
GPIF SYSTEM	75.78%	100.0%				
GPIF SYSTEM WEIGHTED AVERAGE HEAT RATE (Btu/kWh)			8,185	8,883	10,662	11,079

**TAMPA ELECTRIC COMPANY
 DERIVATION OF WEIGHTING FACTORS
 JANUARY 2018 - DECEMBER 2018
 PRODUCTION COSTING SIMULATION
 FUEL COST (\$000)**

UNIT PERFORMANCE INDICATOR	AT TARGET (1)	AT MAXIMUM IMPROVEMENT (2)	SAVINGS (3)	WEIGHTING FACTOR (% OF SAVINGS)
EQUIVALENT AVAILABILITY				
EA ₁ BIG BEND 2	615,817.19	615,201.55	615.64	2.11%
EA ₂ BIG BEND 3	615,817.19	614,737.82	1,079.37	3.70%
EA ₃ BIG BEND 4	615,817.19	614,344.07	1,473.12	5.05%
EA ₄ POLK 1	615,817.19	615,605.25	211.94	0.73%
EA ₅ POLK 2	615,817.19	614,408.34	1,408.85	4.83%
EA ₆ BAYSIDE 1	615,817.19	615,046.99	770.20	2.64%
EA ₇ BAYSIDE 2	615,817.19	614,311.49	1,505.70	5.16%
AVERAGE HEAT RATE				
AHR ₁ BIG BEND 2	615,817.19	615,038.88	778.31	2.67%
AHR ₂ BIG BEND 3	615,817.19	614,368.81	1,448.38	4.96%
AHR ₃ BIG BEND 4	615,817.19	613,670.72	2,146.47	7.36%
AHR ₄ POLK 1	615,817.19	614,789.23	1,027.96	3.52%
AHR ₅ POLK 2	615,817.19	602,574.43	13,242.76	45.39%
AHR ₆ BAYSIDE 1	615,817.19	614,457.56	1,359.63	4.66%
AHR ₇ BAYSIDE 2	615,817.19	613,710.73	2,106.46	7.22%
TOTAL SAVINGS			29,174.79	100.00%

- (1) Fuel Adjustment Base Case - All unit performance indicators at target.
- (2) All other units performance indicators at target.
- (3) Expressed in replacement energy cost.

TAMPA ELECTRIC COMPANY

GPIF TARGET AND RANGE SUMMARY

JANUARY 2018 - DECEMBER 2018

BIG BEND 2

<u>EQUIVALENT AVAILABILITY POINTS</u>	<u>FUEL SAVINGS / (LOSS) (\$000)</u>	<u>ADJUSTED ACTUAL EQUIVALENT AVAILABILITY</u>	<u>AVERAGE HEAT RATE POINTS</u>	<u>FUEL SAVINGS / (LOSS) (\$000)</u>	<u>ADJUSTED ACTUAL AVERAGE HEAT RATE</u>
+10	615.6	68.2	+10	778.3	10,843
+9	554.1	67.6	+9	700.5	10,883
+8	492.5	66.9	+8	622.6	10,923
+7	430.9	66.2	+7	544.8	10,963
+6	369.4	65.5	+6	467.0	11,004
+5	307.8	64.9	+5	389.2	11,044
+4	246.3	64.2	+4	311.3	11,084
+3	184.7	63.5	+3	233.5	11,124
+2	123.1	62.9	+2	155.7	11,165
+1	61.6	62.2	+1	77.8	11,205
					11,245
0	0.0	61.5	0	0.0	11,320
					11,395
-1	(107.8)	60.2	-1	(77.8)	11,436
-2	(215.5)	58.8	-2	(155.7)	11,476
-3	(323.3)	57.5	-3	(233.5)	11,516
-4	(431.1)	56.1	-4	(311.3)	11,556
-5	(538.9)	54.8	-5	(389.2)	11,597
-6	(646.6)	53.5	-6	(467.0)	11,637
-7	(754.4)	52.1	-7	(544.8)	11,677
-8	(862.2)	50.8	-8	(622.6)	11,717
-9	(970.0)	49.4	-9	(700.5)	11,758
-10	(1,077.7)	48.1	-10	(778.3)	11,798

Weighting Factor =

2.11%

Weighting Factor =

2.67%

TAMPA ELECTRIC COMPANY

GPIF TARGET AND RANGE SUMMARY

JANUARY 2018 - DECEMBER 2018

BIG BEND 3

EQUIVALENT AVAILABILITY POINTS	FUEL SAVINGS / (LOSS) (\$000)	ADJUSTED ACTUAL EQUIVALENT AVAILABILITY	AVERAGE HEAT RATE POINTS	FUEL SAVINGS / (LOSS) (\$000)	ADJUSTED ACTUAL AVERAGE HEAT RATE
+10	1,079.4	72.4	+10	1,448.4	10,252
+9	971.4	71.8	+9	1,303.5	10,281
+8	863.5	71.3	+8	1,158.7	10,310
+7	755.6	70.7	+7	1,013.9	10,339
+6	647.6	70.1	+6	869.0	10,369
+5	539.7	69.6	+5	724.2	10,398
+4	431.7	69.0	+4	579.4	10,427
+3	323.8	68.4	+3	434.5	10,456
+2	215.9	67.9	+2	289.7	10,486
+1	107.9	67.3	+1	144.8	10,515
					10,544
0	0.0	66.7	0	0.0	10,619
					10,694
-1	(318.9)	65.6	-1	(144.8)	10,723
-2	(637.9)	64.5	-2	(289.7)	10,753
-3	(956.8)	63.3	-3	(434.5)	10,782
-4	(1,275.8)	62.2	-4	(579.4)	10,811
-5	(1,594.7)	61.0	-5	(724.2)	10,840
-6	(1,913.6)	59.9	-6	(869.0)	10,870
-7	(2,232.6)	58.8	-7	(1,013.9)	10,899
-8	(2,551.5)	57.6	-8	(1,158.7)	10,928
-9	(2,870.5)	56.5	-9	(1,303.5)	10,957
-10	(3,189.4)	55.4	-10	(1,448.4)	10,987

Weighting Factor =

3.70%

Weighting Factor =

4.96%

TAMPA ELECTRIC COMPANY

GPIF TARGET AND RANGE SUMMARY

JANUARY 2018 - DECEMBER 2018

BIG BEND 4

EQUIVALENT AVAILABILITY POINTS	FUEL SAVINGS / (LOSS) (\$000)	ADJUSTED ACTUAL EQUIVALENT AVAILABILITY	AVERAGE HEAT RATE POINTS	FUEL SAVINGS / (LOSS) (\$000)	ADJUSTED ACTUAL AVERAGE HEAT RATE
+10	1,473.1	82.0	+10	2,146.5	10,066
+9	1,325.8	81.6	+9	1,931.8	10,097
+8	1,178.5	81.3	+8	1,717.2	10,128
+7	1,031.2	81.0	+7	1,502.5	10,159
+6	883.9	80.6	+6	1,287.9	10,189
+5	736.6	80.3	+5	1,073.2	10,220
+4	589.2	80.0	+4	858.6	10,251
+3	441.9	79.7	+3	643.9	10,281
+2	294.6	79.3	+2	429.3	10,312
+1	147.3	79.0	+1	214.6	10,343
					10,373
0	0.0	78.7	0	0.0	10,448
					10,523
-1	(184.6)	78.0	-1	(214.6)	10,554
-2	(369.2)	77.4	-2	(429.3)	10,585
-3	(553.7)	76.7	-3	(643.9)	10,615
-4	(738.3)	76.1	-4	(858.6)	10,646
-5	(922.9)	75.4	-5	(1,073.2)	10,677
-6	(1,107.5)	74.7	-6	(1,287.9)	10,708
-7	(1,292.0)	74.1	-7	(1,502.5)	10,738
-8	(1,476.6)	73.4	-8	(1,717.2)	10,769
-9	(1,661.2)	72.8	-9	(1,931.8)	10,800
-10	(1,845.8)	72.1	-10	(2,146.5)	10,830

Weighting Factor =

5.05%

Weighting Factor =

7.36%

TAMPA ELECTRIC COMPANY

GPIF TARGET AND RANGE SUMMARY

JANUARY 2018 - DECEMBER 2018

POLK 1

<u>EQUIVALENT AVAILABILITY POINTS</u>	<u>FUEL SAVINGS / (LOSS) (\$000)</u>	<u>ADJUSTED ACTUAL EQUIVALENT AVAILABILITY</u>	<u>AVERAGE HEAT RATE POINTS</u>	<u>FUEL SAVINGS / (LOSS) (\$000)</u>	<u>ADJUSTED ACTUAL AVERAGE HEAT RATE</u>
+10	211.9	77.0	+10	1,028.0	9,644
+9	190.7	76.7	+9	925.2	9,670
+8	169.6	76.4	+8	822.4	9,696
+7	148.4	76.2	+7	719.6	9,722
+6	127.2	75.9	+6	616.8	9,748
+5	106.0	75.7	+5	514.0	9,774
+4	84.8	75.4	+4	411.2	9,799
+3	63.6	75.2	+3	308.4	9,825
+2	42.4	74.9	+2	205.6	9,851
+1	21.2	74.7	+1	102.8	9,877
					9,903
0	0.0	74.4	0	0.0	9,978
					10,053
-1	(38.1)	73.9	-1	(102.8)	10,079
-2	(76.2)	73.4	-2	(205.6)	10,105
-3	(114.3)	72.9	-3	(308.4)	10,130
-4	(152.4)	72.4	-4	(411.2)	10,156
-5	(190.4)	71.9	-5	(514.0)	10,182
-6	(228.5)	71.4	-6	(616.8)	10,208
-7	(266.6)	70.9	-7	(719.6)	10,234
-8	(304.7)	70.4	-8	(822.4)	10,260
-9	(342.8)	69.9	-9	(925.2)	10,286
-10	(380.9)	69.4	-10	(1,028.0)	10,312

Weighting Factor =

0.73%

Weighting Factor =

3.52%

TAMPA ELECTRIC COMPANY

GPIF TARGET AND RANGE SUMMARY

JANUARY 2018 - DECEMBER 2018

POLK 2

<u>EQUIVALENT AVAILABILITY POINTS</u>	<u>FUEL SAVINGS / (LOSS) (\$000)</u>	<u>ADJUSTED ACTUAL EQUIVALENT AVAILABILITY</u>	<u>AVERAGE HEAT RATE POINTS</u>	<u>FUEL SAVINGS / (LOSS) (\$000)</u>	<u>ADJUSTED ACTUAL AVERAGE HEAT RATE</u>
+10	1,408.9	85.7	+10	13,242.8	6,827
+9	1,268.0	85.5	+9	11,918.5	6,875
+8	1,127.1	85.2	+8	10,594.2	6,923
+7	986.2	85.0	+7	9,269.9	6,971
+6	845.3	84.7	+6	7,945.7	7,019
+5	704.4	84.5	+5	6,621.4	7,067
+4	563.5	84.2	+4	5,297.1	7,115
+3	422.7	84.0	+3	3,972.8	7,163
+2	281.8	83.7	+2	2,648.6	7,211
+1	140.9	83.5	+1	1,324.3	7,259
					7,307
0	0.0	83.2	0	0.0	7,382
					7,457
-1	(137.3)	82.7	-1	(1,324.3)	7,505
-2	(274.5)	82.2	-2	(2,648.6)	7,553
-3	(411.8)	81.7	-3	(3,972.8)	7,601
-4	(549.1)	81.2	-4	(5,297.1)	7,648
-5	(686.3)	80.7	-5	(6,621.4)	7,696
-6	(823.6)	80.2	-6	(7,945.7)	7,744
-7	(960.9)	79.7	-7	(9,269.9)	7,792
-8	(1,098.2)	79.2	-8	(10,594.2)	7,840
-9	(1,235.4)	78.7	-9	(11,918.5)	7,888
-10	(1,372.7)	78.2	-10	(13,242.8)	7,936
	Weighting Factor =	4.83%		Weighting Factor =	45.39%

TAMPA ELECTRIC COMPANY

GPIF TARGET AND RANGE SUMMARY

JANUARY 2018 - DECEMBER 2018

BAYSIDE 1

<u>EQUIVALENT AVAILABILITY POINTS</u>	<u>FUEL SAVINGS / (LOSS) (\$000)</u>	<u>ADJUSTED ACTUAL EQUIVALENT AVAILABILITY</u>	<u>AVERAGE HEAT RATE POINTS</u>	<u>FUEL SAVINGS / (LOSS) (\$000)</u>	<u>ADJUSTED ACTUAL AVERAGE HEAT RATE</u>
+10	770.2	83.8	+10	1,359.6	7,360
+9	693.2	83.7	+9	1,223.7	7,365
+8	616.2	83.5	+8	1,087.7	7,371
+7	539.1	83.4	+7	951.7	7,376
+6	462.1	83.3	+6	815.8	7,382
+5	385.1	83.2	+5	679.8	7,387
+4	308.1	83.0	+4	543.9	7,393
+3	231.1	82.9	+3	407.9	7,398
+2	154.0	82.8	+2	271.9	7,403
+1	77.0	82.7	+1	136.0	7,409
					7,414
0	0.0	82.5	0	0.0	7,489
					7,564
-1	(38.5)	82.3	-1	(136.0)	7,570
-2	(77.0)	82.0	-2	(271.9)	7,575
-3	(115.5)	81.8	-3	(407.9)	7,581
-4	(154.0)	81.5	-4	(543.9)	7,586
-5	(192.5)	81.3	-5	(679.8)	7,592
-6	(231.1)	81.0	-6	(815.8)	7,597
-7	(269.6)	80.7	-7	(951.7)	7,603
-8	(308.1)	80.5	-8	(1,087.7)	7,608
-9	(346.6)	80.2	-9	(1,223.7)	7,614
-10	(385.1)	80.0	-10	(1,359.6)	7,619

Weighting Factor =

2.64%

Weighting Factor =

4.66%

TAMPA ELECTRIC COMPANY

GPIF TARGET AND RANGE SUMMARY

JANUARY 2018 - DECEMBER 2018

BAYSIDE 2

<u>EQUIVALENT AVAILABILITY POINTS</u>	<u>FUEL SAVINGS / (LOSS) (\$000)</u>	<u>ADJUSTED ACTUAL EQUIVALENT AVAILABILITY</u>	<u>AVERAGE HEAT RATE POINTS</u>	<u>FUEL SAVINGS / (LOSS) (\$000)</u>	<u>ADJUSTED ACTUAL AVERAGE HEAT RATE</u>
+10	1,505.7	79.1	+10	2,106.5	7,447
+9	1,355.1	78.9	+9	1,895.8	7,462
+8	1,204.6	78.7	+8	1,685.2	7,478
+7	1,054.0	78.6	+7	1,474.5	7,493
+6	903.4	78.4	+6	1,263.9	7,509
+5	752.9	78.2	+5	1,053.2	7,524
+4	602.3	78.0	+4	842.6	7,539
+3	451.7	77.9	+3	631.9	7,555
+2	301.1	77.7	+2	421.3	7,570
+1	150.6	77.5	+1	210.6	7,585
					7,601
0	0.0	77.3	0	0.0	7,676
					7,751
-1	(181.5)	77.0	-1	(210.6)	7,766
-2	(363.1)	76.6	-2	(421.3)	7,782
-3	(544.6)	76.3	-3	(631.9)	7,797
-4	(726.2)	75.9	-4	(842.6)	7,812
-5	(907.7)	75.6	-5	(1,053.2)	7,828
-6	(1,089.3)	75.3	-6	(1,263.9)	7,843
-7	(1,270.8)	74.9	-7	(1,474.5)	7,859
-8	(1,452.4)	74.6	-8	(1,685.2)	7,874
-9	(1,633.9)	74.2	-9	(1,895.8)	7,889
-10	(1,815.5)	73.9	-10	(2,106.5)	7,905
	Weighting Factor =	5.16%		Weighting Factor =	7.22%

TAMPA ELECTRIC COMPANY
ESTIMATED UNIT PERFORMANCE DATA
JANUARY 2018 - DECEMBER 2018

PLANT/UNIT	MONTH OF:	MONTH OF:	MONTH OF:	MONTH OF:	MONTH OF:	MONTH OF:	MONTH OF:	MONTH OF:	MONTH OF:	MONTH OF:	MONTH OF:	MONTH OF:	PERIOD
BIG BEND 2	Jan-18	Feb-18	Mar-18	Apr-18	May-18	Jun-18	Jul-18	Aug-18	Sep-18	Oct-18	Nov-18	Dec-18	2018
1. EAF (%)	65.8	58.8	42.5	65.8	65.8	65.8	65.8	65.8	65.8	65.8	43.9	65.8	61.5
2. POF	0.0	10.7	35.4	0.0	0.0	0.0	0.0	0.0	0.0	0.0	33.3	0.0	6.6
3. EUOF	34.2	30.5	22.1	34.2	34.2	34.2	34.2	34.2	34.2	34.2	22.8	34.2	31.9
4. EUOR	34.2	34.2	34.2	0.0	34.2	34.2	34.2	34.2	34.2	34.2	34.2	34.2	34.2
5. PH	744	672	743	720	744	720	744	744	720	744	721	744	8,760
6. SH	48	43	105	0	10	229	211	266	248	227	341	173	1,901
7. RSH	0	0	0	0	0	0	0	0	0	0	0	0	0
8. UH	696	629	638	720	734	491	533	478	472	517	380	571	6,859
9. POH	0	72	263	0	0	0	0	0	0	0	240	0	575
10. EFOH	243	196	157	235	243	235	243	243	235	243	157	243	2,670
11. EMOH	12	9	7	11	12	11	12	12	11	12	7	12	127
12. OPER BTU (GBTU)	105	102	231	0	22	556	508	626	627	596	971	391	4,738
13. NET GEN (MWH)	9,120	8,920	20,200	0	1,960	48,990	44,750	54,950	55,490	52,900	87,060	34,220	418,560
14. ANOHR (Btu/kwh)	11,463	11,381	11,452	0	11,435	11,350	11,359	11,385	11,303	11,259	11,154	11,426	11,320
15. NOF (%)	52.1	56.8	52.7	0.0	53.7	58.6	58.1	56.6	61.3	63.8	69.9	54.2	60.3
16. NPC (MW)	365	365	365	365	365	365	365	365	365	365	365	365	365
17. ANOHR EQUATION	ANOHR = NOF(-17.276) +								12,362

33

TAMPA ELECTRIC COMPANY
ESTIMATED UNIT PERFORMANCE DATA
JANUARY 2018 - DECEMBER 2018

PLANT/UNIT	MONTH OF:	MONTH OF:	MONTH OF:	MONTH OF:	MONTH OF:	MONTH OF:	MONTH OF:	MONTH OF:	MONTH OF:	MONTH OF:	MONTH OF:	MONTH OF:	PERIOD
BIG BEND 3	Jan-18	Feb-18	Mar-18	Apr-18	May-18	Jun-18	Jul-18	Aug-18	Sep-18	Oct-18	Nov-18	Dec-18	2018
1. EAF (%)	71.4	71.4	71.4	47.6	62.2	71.4	71.4	71.4	71.4	48.4	71.4	71.4	66.7
2. POF	0.0	0.0	0.0	33.3	12.9	0.0	0.0	0.0	0.0	32.3	0.0	0.0	6.6
3. EUOF	28.6	28.6	28.6	19.1	24.9	28.6	28.6	28.6	28.6	19.4	28.6	28.6	26.7
4. EUOR	28.6	28.6	28.6	28.6	28.6	28.6	28.6	28.6	28.6	28.6	28.6	28.6	28.6
5. PH	744	672	743	720	744	720	744	744	720	744	721	744	8,760
6. SH	539	540	603	206	525	439	523	419	450	283	438	474	5,439
7. RSH	0	0	0	0	0	0	0	0	0	0	0	0	0
8. UH	205	132	140	514	219	281	221	325	270	461	283	270	3,321
9. POH	0	0	0	240	96	0	0	0	0	240	0	0	576
10. EFOH	201	181	200	129	175	194	201	201	194	136	194	201	2,206
11. EMOH	12	11	12	8	11	12	12	12	12	8	12	12	133
12. OPER BTU (GBTU)	1,981	1,870	2,168	653	1,723	1,454	1,610	1,362	1,574	954	1,427	1,731	18,515
13. NET GEN (MWH)	188,660	176,390	205,730	60,860	161,490	136,450	149,510	127,490	149,010	89,710	133,570	164,680	1,743,550
14. ANOHR (Btu/kwh)	10,500	10,604	10,539	10,727	10,672	10,657	10,770	10,687	10,565	10,629	10,684	10,512	10,619
15. NOF (%)	87.5	81.7	85.3	74.8	77.9	78.7	72.4	77.0	83.8	80.3	77.2	86.9	80.8
16. NPC (MW)	400	400	400	395	395	395	395	395	395	395	395	400	397
17. ANOHR EQUATION	ANOHR = NOF(-17.826) +								12,060

34

TAMPA ELECTRIC COMPANY
ESTIMATED UNIT PERFORMANCE DATA
JANUARY 2018 - DECEMBER 2018

PLANT/UNIT	MONTH OF:	MONTH OF:	MONTH OF:	MONTH OF:	MONTH OF:	MONTH OF:	MONTH OF:	MONTH OF:	MONTH OF:	MONTH OF:	MONTH OF:	MONTH OF:	PERIOD
BIG BEND 4	Jan-18	Feb-18	Mar-18	Apr-18	May-18	Jun-18	Jul-18	Aug-18	Sep-18	Oct-18	Nov-18	Dec-18	2018
1. EAF (%)	84.2	84.2	46.1	84.2	84.2	84.2	84.2	84.2	84.2	84.2	84.2	57.0	78.7
2. POF	0.0	0.0	45.2	0.0	0.0	0.0	0.0	0.0	0.0	0.0	0.0	32.3	6.6
3. EUOF	15.8	15.8	8.6	15.8	15.8	15.8	15.8	15.8	15.8	15.8	15.8	10.7	14.7
4. EUOR	15.8	15.8	15.8	15.8	15.8	15.8	15.8	15.8	15.8	15.8	15.8	15.8	15.8
5. PH	744	672	743	720	744	720	744	744	720	744	721	744	8,760
6. SH	522	672	362	546	624	584	622	608	672	666	522	257	6,657
7. RSH	0	0	0	0	0	0	0	0	0	0	0	0	0
8. UH	222	0	381	174	120	136	122	136	48	78	199	487	2,103
9. POH	0	0	336	0	0	0	0	0	0	0	0	240	576
10. EFOH	89	81	49	86	89	86	89	89	86	89	86	60	981
11. EMOH	28	26	15	27	28	27	28	28	27	28	27	19	311
12. OPER BTU (GBTU)	2,178	2,721	1,586	2,122	2,366	2,230	2,514	2,389	2,654	2,548	2,050	1,012	26,375
13. NET GEN (MWH)	209,530	260,830	153,470	202,780	225,390	212,640	241,270	228,520	254,010	243,020	196,120	96,750	2,524,330
14. ANOHR (Btu/kwh)	10,394	10,431	10,331	10,466	10,495	10,487	10,420	10,454	10,448	10,485	10,454	10,464	10,448
15. NOF (%)	90.8	87.8	95.9	85.0	82.7	83.3	88.8	86.0	86.5	83.5	86.0	85.2	86.4
16. NPC (MW)	442	442	442	437	437	437	437	437	437	437	437	442	439
17. ANOHR EQUATION	ANOHR = NOF(-12.371) +								11,518

35

TAMPA ELECTRIC COMPANY
ESTIMATED UNIT PERFORMANCE DATA
JANUARY 2018 - DECEMBER 2018

PLANT/UNIT	MONTH OF:	MONTH OF:	MONTH OF:	MONTH OF:	MONTH OF:	MONTH OF:	MONTH OF:	MONTH OF:	MONTH OF:	MONTH OF:	MONTH OF:	MONTH OF:	PERIOD
POLK 1	Jan-18	Feb-18	Mar-18	Apr-18	May-18	Jun-18	Jul-18	Aug-18	Sep-18	Oct-18	Nov-18	Dec-18	2018
1. EAF (%)	90.0	67.5	90.0	90.0	90.0	90.0	90.0	43.5	0.0	60.9	90.0	90.0	74.4
2. POF	0.0	25.0	0.0	0.0	0.0	0.0	0.0	51.6	100.0	32.3	0.0	0.0	17.3
3. EUOF	10.0	7.5	10.0	10.0	10.0	10.0	10.0	4.9	0.0	6.8	10.0	10.0	8.3
4. EUOR	10.0	10.0	10.0	10.0	10.0	10.0	10.0	10.0	0.0	10.0	10.0	10.0	10.0
5. PH	744	672	743	720	744	720	744	744	720	744	721	744	8,760
6. SH	688	510	659	658	696	608	678	348	0	497	651	671	6,664
7. RSH	0	0	0	0	0	0	0	0	0	0	0	0	0
8. UH	56	162	84	62	48	112	66	396	720	247	70	73	2,096
9. POH	0	168	0	0	0	0	0	384	720	240	0	0	1,512
10. EFOH	64	44	64	62	64	62	64	31	0	44	62	64	627
11. EMOH	10	7	10	10	10	10	10	5	0	7	10	10	101
12. OPER BTU (GBTU)	1,504	1,100	1,436	1,433	1,504	1,321	1,476	760	0	1,080	1,422	1,462	14,498
13. NET GEN (MWH)	150,650	110,370	143,890	143,580	150,900	132,450	147,940	76,130	0	108,220	142,450	146,460	1,453,040
14. ANOHR (Btu/kwh)	9,985	9,966	9,980	9,979	9,969	9,976	9,979	9,983	0	9,976	9,984	9,980	9,978
15. NOF (%)	99.5	98.4	99.2	99.2	98.6	99.0	99.2	99.4	0.0	99.0	99.5	99.2	99.1
16. NPC (MW)	220	220	220	220	220	220	220	220	220	220	220	220	220
17. ANOHR EQUATION	ANOHR = NOF(16.584) +			8,334									

36

TAMPA ELECTRIC COMPANY
ESTIMATED UNIT PERFORMANCE DATA
JANUARY 2018 - DECEMBER 2018

PLANT/UNIT	MONTH OF:	MONTH OF:	MONTH OF:	MONTH OF:	MONTH OF:	MONTH OF:	MONTH OF:	MONTH OF:	MONTH OF:	MONTH OF:	MONTH OF:	MONTH OF:	PERIOD	
POLK 2	Jan-18	Feb-18	Mar-18	Apr-18	May-18	Jun-18	Jul-18	Aug-18	Sep-18	Oct-18	Nov-18	Dec-18	2018	
1. EAF (%)	88.3	88.3	88.3	88.3	88.3	88.3	88.3	88.3	88.3	71.2	44.1	88.3	83.2	
2. POF	0.0	0.0	0.0	0.0	0.0	0.0	0.0	0.0	0.0	19.4	50.1	0.0	5.8	
3. EUOF	11.7	11.7	11.7	11.7	11.7	11.7	11.7	11.7	11.7	9.4	5.8	11.7	11.0	
4. EUOR	11.7	11.7	11.7	11.7	11.7	11.7	11.7	11.7	11.7	11.7	11.7	11.7	11.7	
5. PH	744	672	743	720	744	720	744	744	720	744	721	744	8,760	
6. SH	744	672	743	720	744	720	744	744	720	744	453	744	8,492	
7. RSH	0	0	0	0	0	0	0	0	0	0	0	0	0	
8. UH	0	0	0	0	0	0	0	0	0	0	268	0	268	
9. POH	0	0	0	0	0	0	0	0	0	144	361	0	505	
10. EFOH	47	42	47	46	47	46	47	47	46	38	23	47	522	
11. EMOH	40	36	40	39	40	39	40	40	39	32	19	40	443	
12. OPER BTU (GBTU)	4,787	3,952	4,703	4,752	4,594	4,768	4,874	5,087	4,385	4,117	2,489	4,707	53,287	
13. NET GEN (MWH)	642,410	523,710	629,610	654,830	625,340	657,390	670,600	705,820	595,590	550,740	332,710	630,080	7,218,830	
14. ANOHR (Btu/kwh)	7,452	7,547	7,470	7,257	7,346	7,253	7,268	7,207	7,363	7,475	7,482	7,470	7,382	
15. NOF (%)	71.2	64.3	69.9	85.5	79.0	85.8	84.7	89.2	77.7	69.6	69.0	69.9	76.4	
16. NPC (MW)	1,212	1,212	1,212	1,064	1,064	1,064	1,064	1,064	1,064	1,064	1,064	1,212	1,113	
17. ANOHR EQUATION	ANOHR = NOF(-13.653) +										8,424

37

TAMPA ELECTRIC COMPANY
ESTIMATED UNIT PERFORMANCE DATA
JANUARY 2018 - DECEMBER 2018

PLANT/UNIT	MONTH OF:	MONTH OF:	MONTH OF:	MONTH OF:	MONTH OF:	MONTH OF:	MONTH OF:	MONTH OF:	MONTH OF:	MONTH OF:	MONTH OF:	MONTH OF:	PERIOD
BAYSIDE 1	Jan-18	Feb-18	Mar-18	Apr-18	May-18	Jun-18	Jul-18	Aug-18	Sep-18	Oct-18	Nov-18	Dec-18	2018
1. EAF (%)	96.9	96.9	96.9	58.1	96.9	96.9	96.9	96.9	96.9	53.1	6.4	96.9	82.5
2. POF	0.0	0.0	0.0	40.0	0.0	0.0	0.0	0.0	0.0	45.2	93.3	0.0	14.8
3. EUOF	3.1	3.1	3.1	1.9	3.1	3.1	3.1	3.1	3.1	1.7	0.2	3.1	2.7
4. EUOR	3.1	3.1	3.1	3.1	3.1	3.1	3.1	3.1	3.1	3.1	3.1	3.1	3.1
5. PH	744	672	743	720	744	720	744	744	720	744	721	744	8,760
6. SH	721	651	720	418	721	697	721	721	697	395	18	721	7,201
7. RSH	0	0	0	0	0	0	0	0	0	0	28	0	29
8. UH	23	21	23	302	23	23	23	23	23	349	675	23	1,530
9. POH	0	0	0	288	0	0	0	0	0	336	673	0	1,297
10. EFOH	10	9	10	6	10	10	10	10	10	5	1	10	99
11. EMOH	13	12	13	8	13	13	13	13	13	7	1	13	135
12. OPER BTU (GBTU)	2,160	1,879	2,182	1,323	2,469	2,665	2,645	2,795	2,779	1,384	55	2,354	24,760
13. NET GEN (MWH)	281,570	244,000	284,750	175,770	331,350	363,440	358,430	382,030	381,610	186,230	7,300	309,540	3,306,020
14. ANOHR (Btu/kwh)	7,672	7,699	7,663	7,528	7,452	7,333	7,379	7,316	7,283	7,429	7,556	7,606	7,489
15. NOF (%)	49.3	47.3	50.0	59.9	65.6	74.3	70.9	75.6	78.1	67.2	57.9	54.2	62.8
16. NPC (MW)	792	792	792	701	701	701	701	701	701	701	701	792	731
17. ANOHR EQUATION	ANOHR = NOF(-13.560) +								8,341

38

TAMPA ELECTRIC COMPANY
ESTIMATED UNIT PERFORMANCE DATA
JANUARY 2018 - DECEMBER 2018

PLANT/UNIT	MONTH OF:	MONTH OF:	MONTH OF:	MONTH OF:	MONTH OF:	MONTH OF:	MONTH OF:	MONTH OF:	MONTH OF:	MONTH OF:	MONTH OF:	MONTH OF:	PERIOD
BAYSIDE 2	Jan-18	Feb-18	Mar-18	Apr-18	May-18	Jun-18	Jul-18	Aug-18	Sep-18	Oct-18	Nov-18	Dec-18	2018
1. EAF (%)	95.0	10.2	0.0	95.0	95.0	95.0	95.0	95.0	95.0	95.0	95.0	58.2	77.3
2. POF	0.0	89.3	100.0	0.0	0.0	0.0	0.0	0.0	0.0	0.0	0.0	38.7	18.6
3. EUOF	5.0	0.5	0.0	5.0	5.0	5.0	5.0	5.0	5.0	5.0	5.0	3.0	4.0
4. EUOR	5.0	0.0	0.0	5.0	5.0	5.0	5.0	5.0	5.0	5.0	5.0	5.0	5.0
5. PH	744	672	743	720	744	720	744	744	720	744	721	744	8,760
6. SH	96	0	0	680	707	684	707	707	684	707	685	303	5,961
7. RSH	611	68	0	4	0	0	0	0	0	0	0	130	814
8. UH	37	604	743	36	37	36	37	37	36	37	36	311	1,985
9. POH	0	600	743	0	0	0	0	0	0	0	0	288	1,631
10. EFOH	19	2	0	18	19	18	19	19	18	19	18	11	180
11. EMOH	18	2	0	18	18	18	18	18	18	18	18	11	175
12. OPER BTU (GBTU)	169	0	0	2,425	2,521	2,871	2,666	2,871	2,822	2,802	3,156	741	23,158
13. NET GEN (MWH)	21,050	0	0	314,770	327,250	378,150	347,710	376,920	371,070	367,050	419,740	93,310	3,017,020
14. ANOHR (Btu/kwh)	8,034	0	0	7,704	7,704	7,593	7,668	7,618	7,606	7,635	7,520	7,937	7,676
15. NOF (%)	20.9	0.0	0.0	49.8	49.8	59.5	52.9	57.4	58.4	55.9	65.9	29.4	52.3
16. NPC (MW)	1,047	1,047	1,047	929	929	929	929	929	929	929	929	1,047	968
17. ANOHR EQUATION	ANOHR = NOF(-11.437) +		8,274						

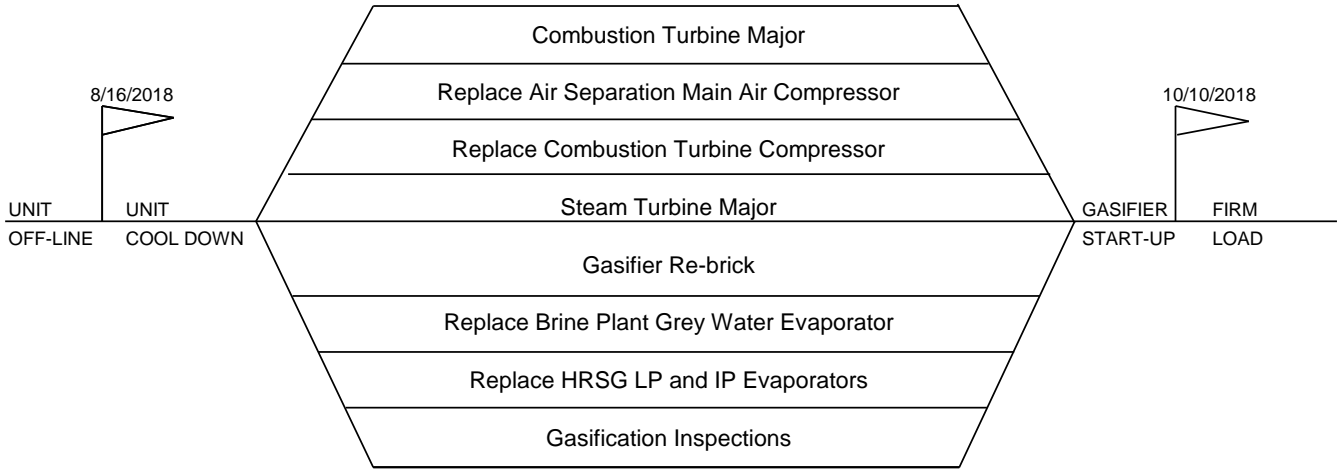
39

**TAMPA ELECTRIC COMPANY
 ESTIMATED PLANNED OUTAGE SCHEDULE
 GPIF UNITS
 JANUARY 2018 - DECEMBER 2018**

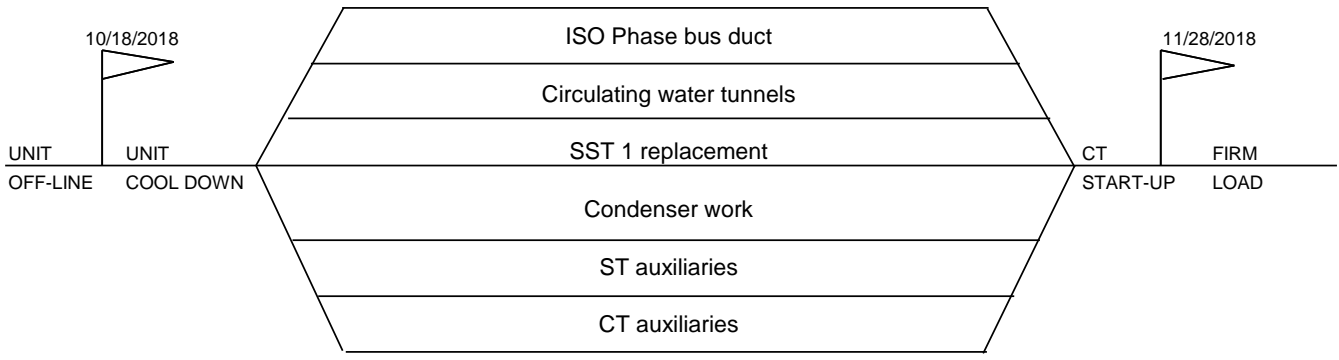
<u>PLANT / UNIT</u>	<u>PLANNED OUTAGE DATES</u>	<u>OUTAGE DESCRIPTION</u>
BIG BEND 2	Feb 26 - Mar 11 Nov 19 - Nov 28	Fuel System Cleanup and FGD/SCR work Fuel System Cleanup and FGD/SCR work
BIG BEND 3	Apr 21 - May 04 Oct 06 - Oct 15	Fuel System Cleanup and FGD/SCR work Fuel System Cleanup and FGD/SCR work
BIG BEND 4	Mar 13 - Mar 26 Dec 04 - Dec 13	Fuel System Cleanup and FGD/SCR work Fuel System Cleanup and FGD/SCR work
+ POLK 1	Feb 17 - Feb 23 Aug 16 - Oct 10	Gasifier Outage Combustion Turbine Major, Steam Turbine Major, Replace Combustion Turbine Compressor, Replace Air Separation Main Air Compressor Bull Gear, pinions, and impellers, Gasifier Re-brick, Replace Brine Plant Grey Water Evaporator, Replace HRSG LP and IP Evaporators, Gasification Inspections
POLK 2	Oct 19 - Nov 15	Fuel System Cleanup
+ BAYSIDE 1	Apr 06 - Apr 17 Oct 18 - Nov 28	Fuel System Cleanup SST 1 replacement, ISO Phase bus duct, Condenser work, Circulating water tunnels, ST auxiliaries, CT auxiliaries
+ BAYSIDE 2	Feb 04 - Mar 31 Dec 09 - Dec 20	HP/IP Curtis Stage upgrade, Centerline bearing & steam seals, SST 2 replacement, Reserve #3 replacement, Condensers, ZBL System, Circ. & condensate pumps, ST & CT auxiliaries Fuel System Cleanup

+ These units have CPM included. CPM for units with less than or equal to 4 weeks are not included.

**TAMPA ELECTRIC COMPANY
 CRITICAL PATH METHOD DIAGRAMS
 GPIF UNITS > FOUR WEEKS
 JANUARY 2018 - DECEMBER 2018**

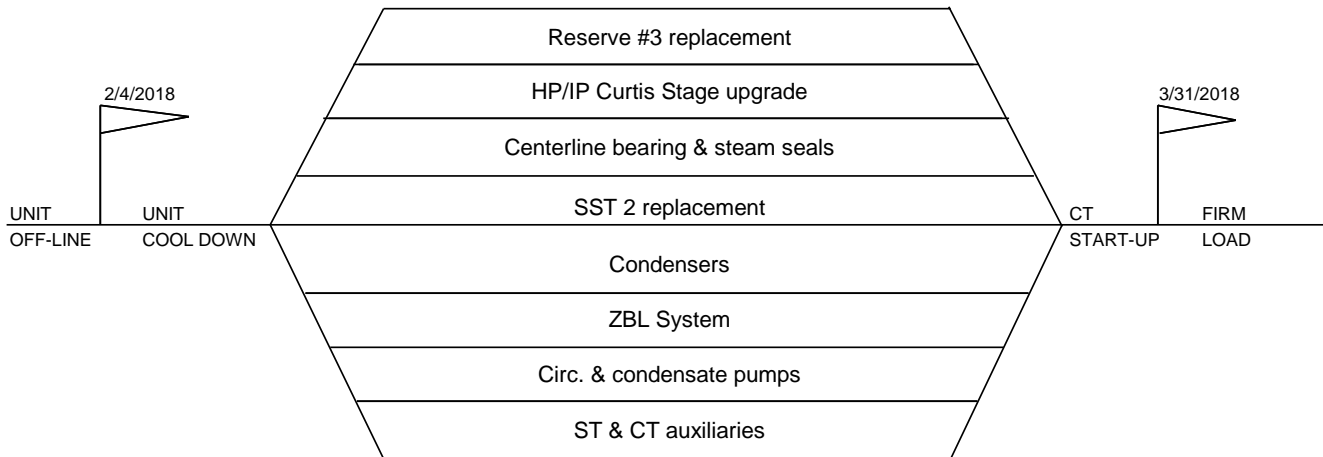


TAMPA ELECTRIC COMPANY
 POLK 1
 PLANNED OUTAGE 2018
 PROJECTED CPM



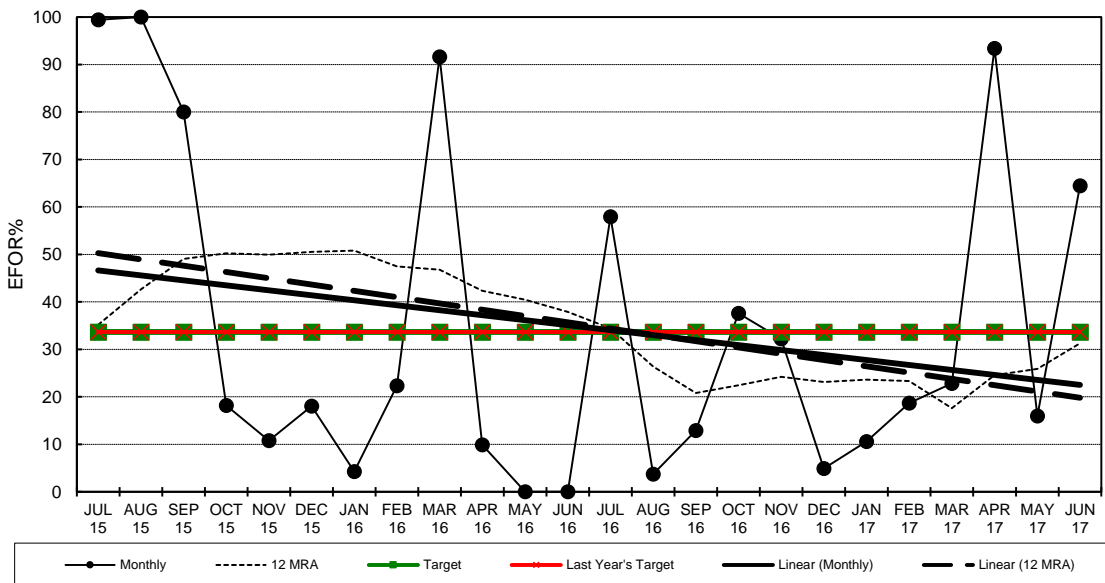
TAMPA ELECTRIC COMPANY
 BAYSIDE 1
 PLANNED OUTAGE 2018
 PROJECTED CPM

**TAMPA ELECTRIC COMPANY
CRITICAL PATH METHOD DIAGRAMS
GPIF UNITS > FOUR WEEKS
JANUARY 2018 - DECEMBER 2018**

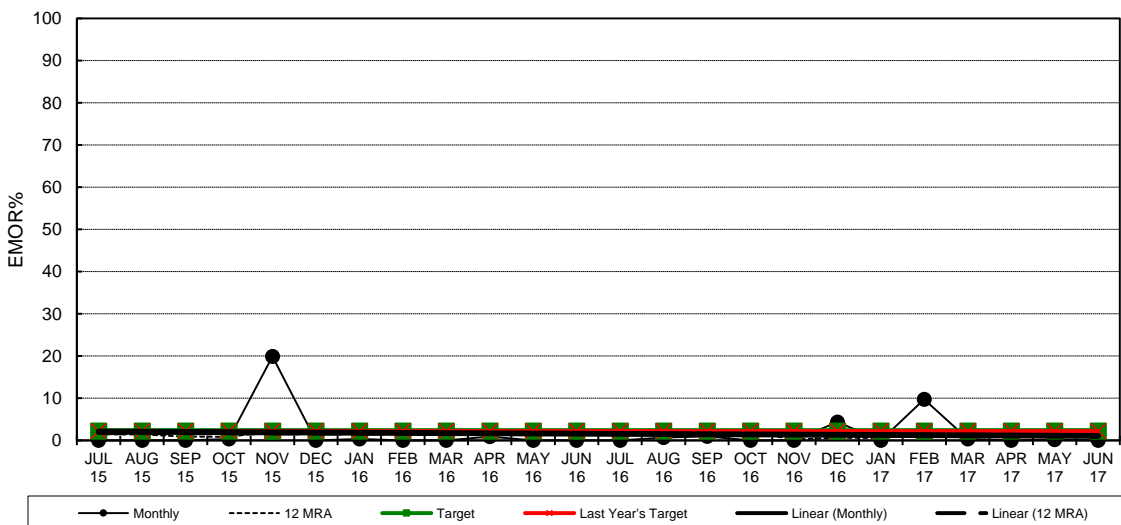


TAMPA ELECTRIC COMPANY
BAYSIDE 2
PLANNED OUTAGE 2018
PROJECTED CPM

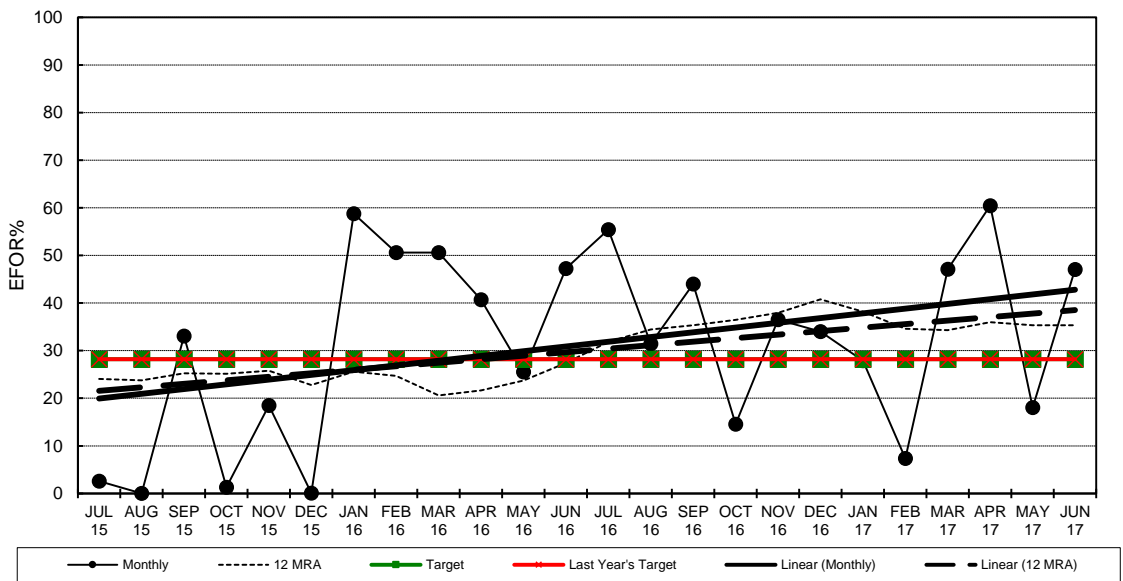
Big Bend Unit 2
 EFOR



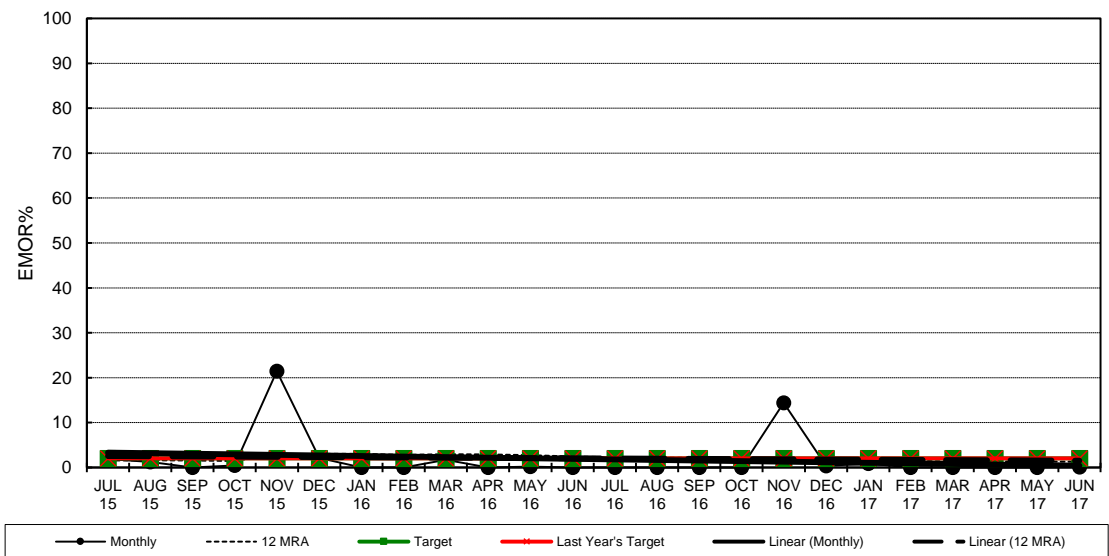
Big Bend Unit 2
 EMOR



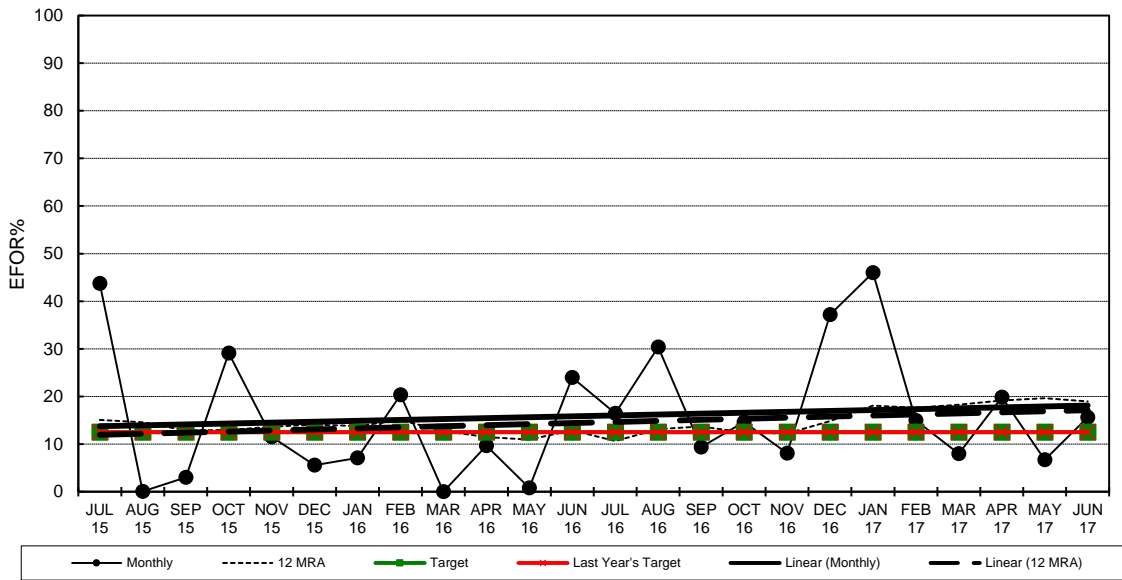
Big Bend Unit 3
 EFOR



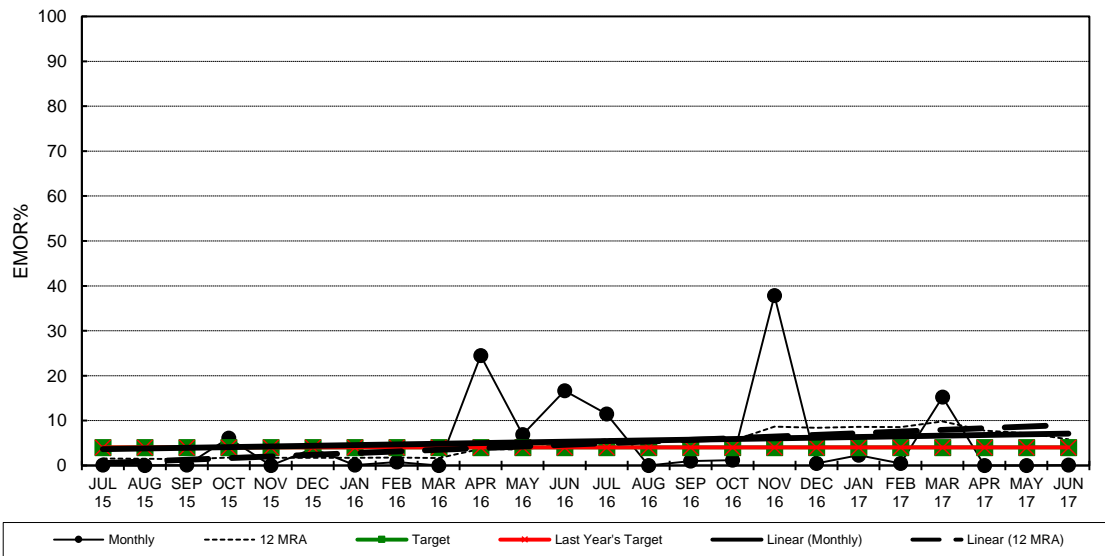
Big Bend Unit 3
 EMOR



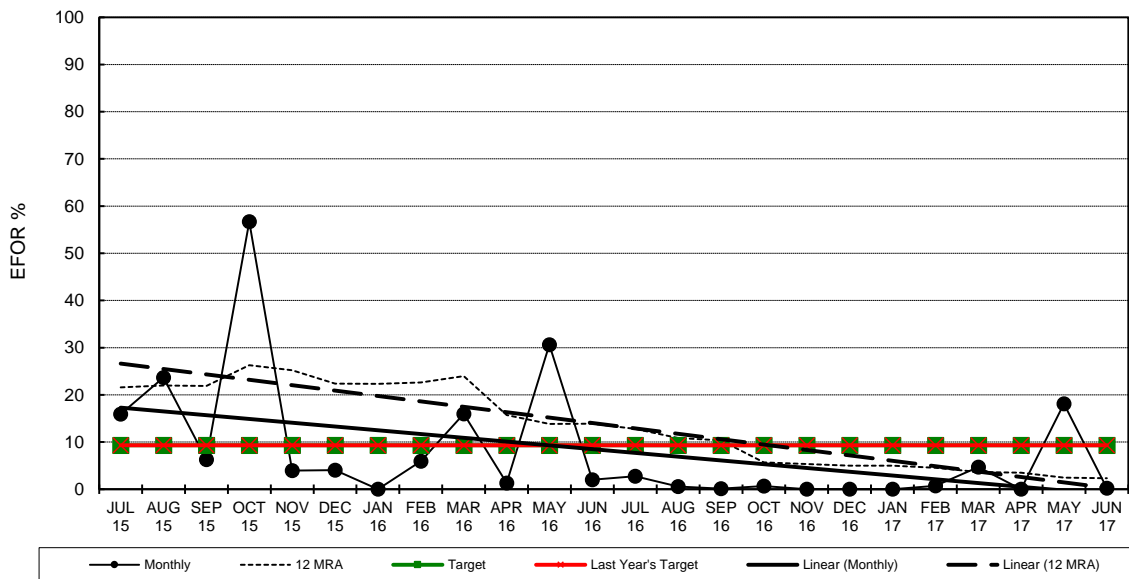
Big Bend Unit 4
 EFOR



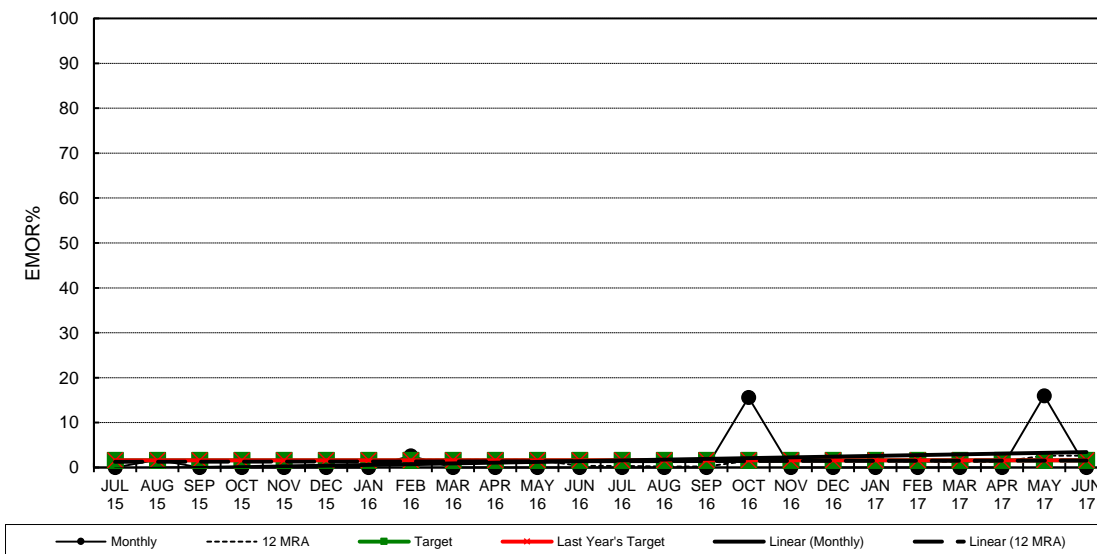
Big Bend Unit 4
 EMOR



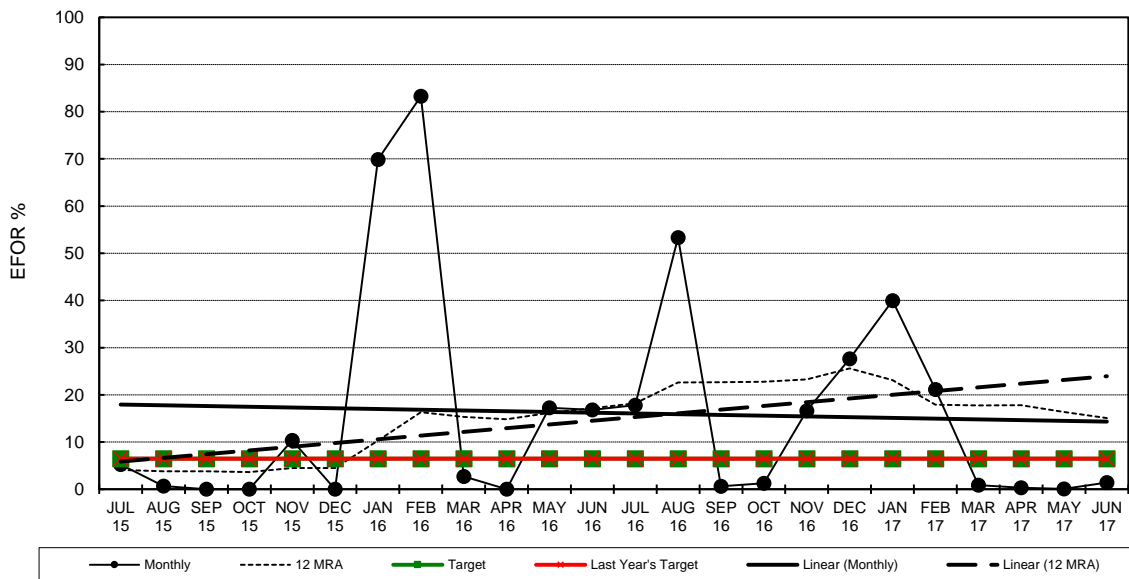
Polk Unit 1
 EFOR



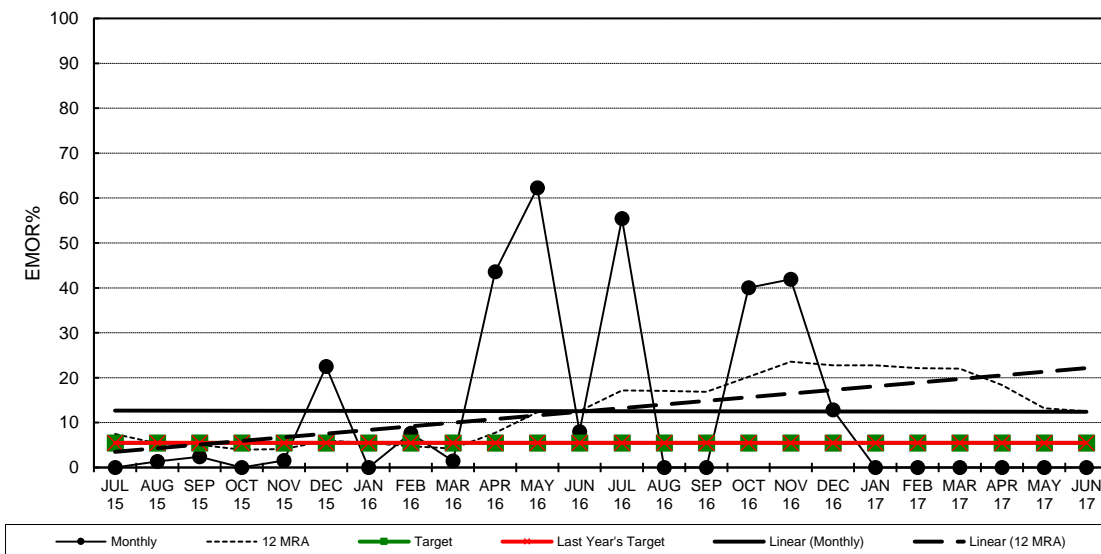
Polk Unit 1
 EMOR



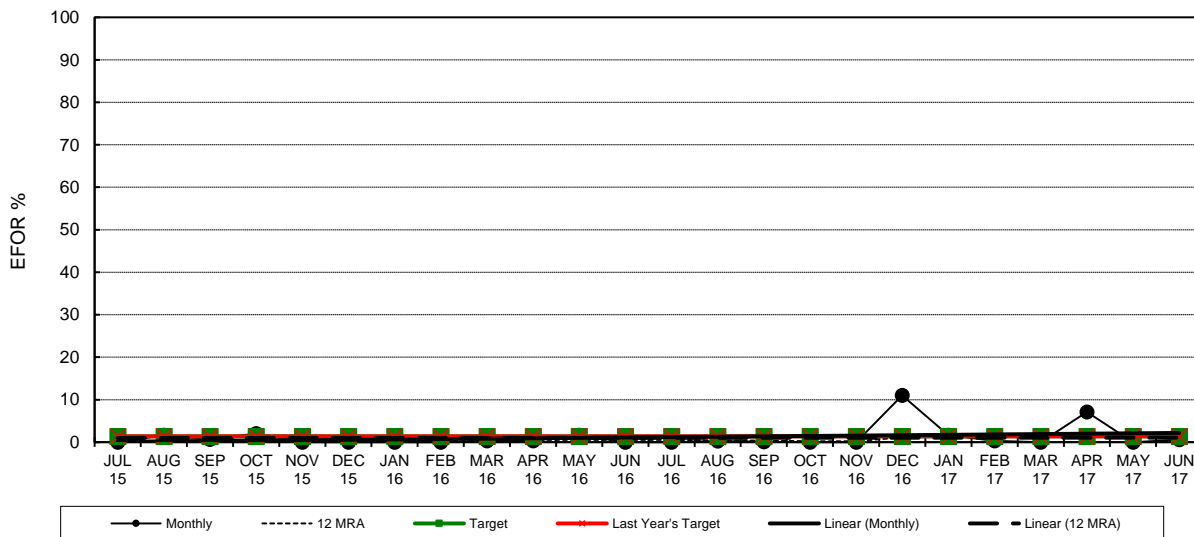
Polk Unit 2
 EFOR



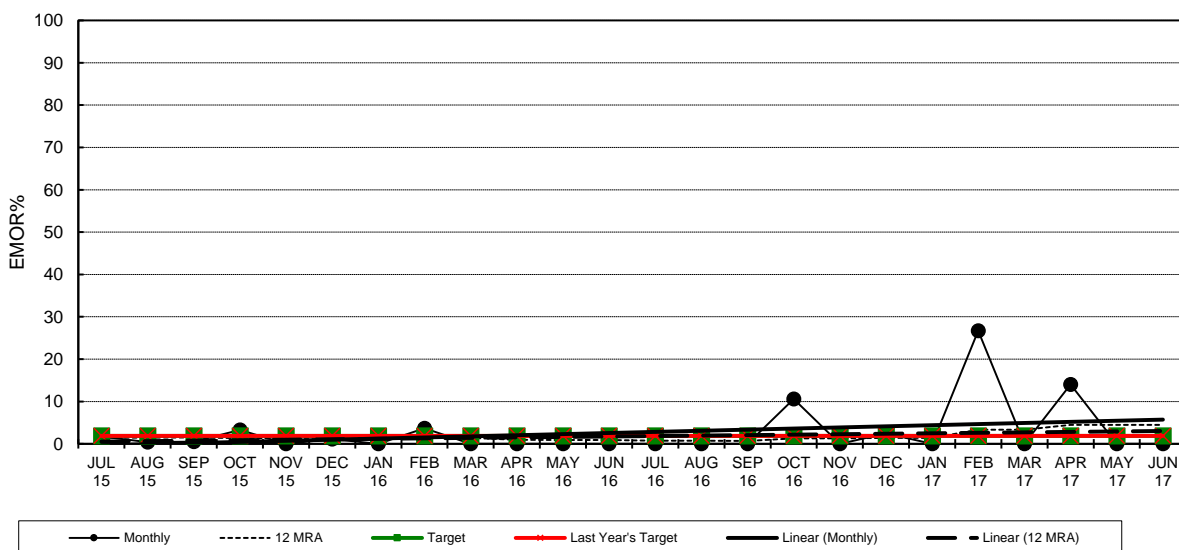
Polk Unit 2
 EMOR



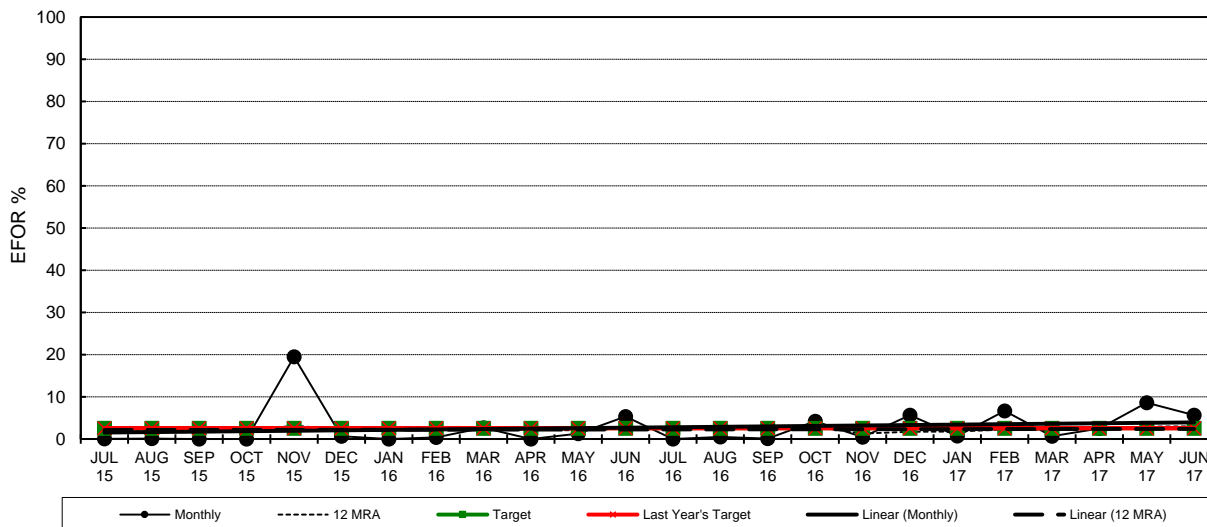
Bayside Unit 1
 EFOR



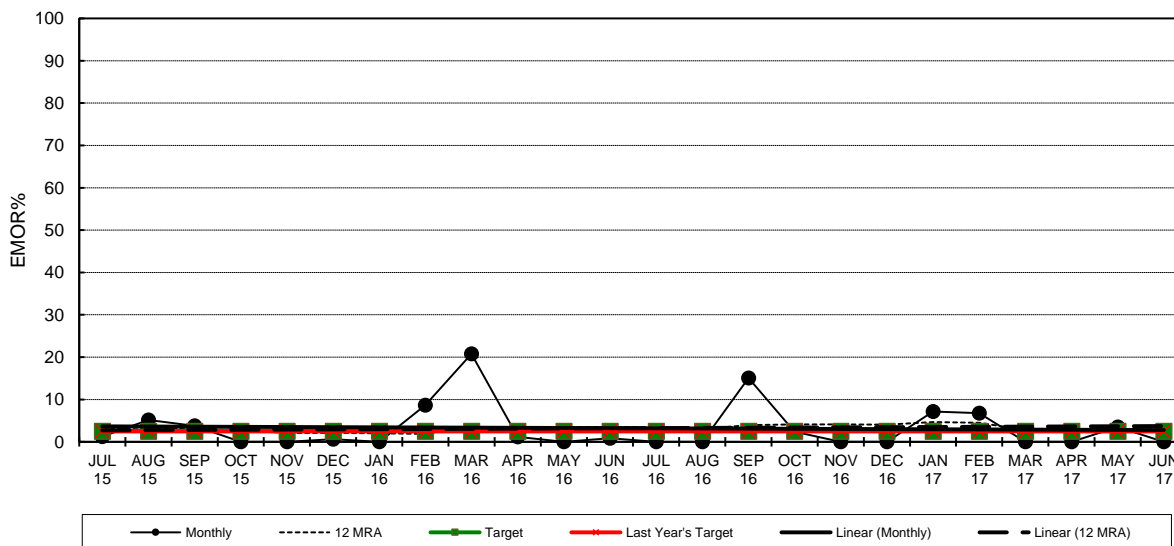
Bayside Unit 1
 EMOR



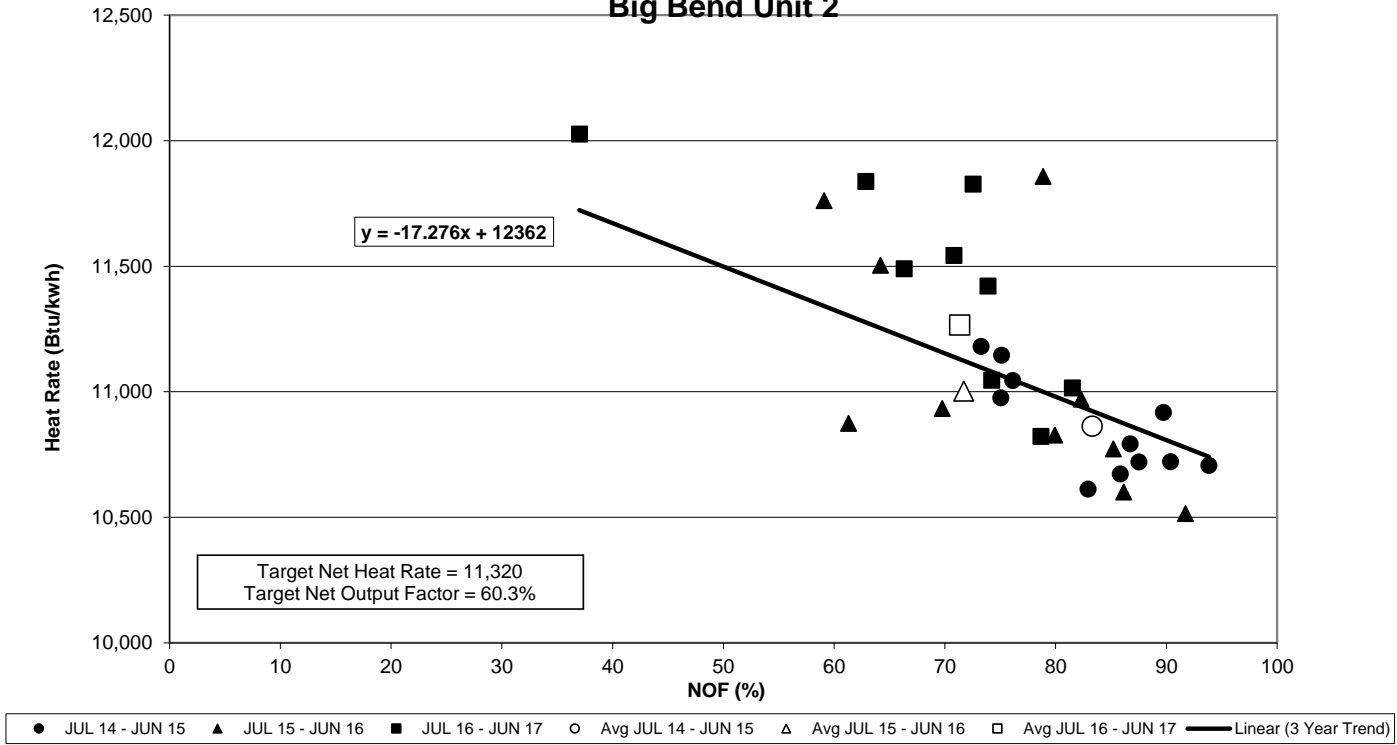
Bayside Unit 2
 EFOR



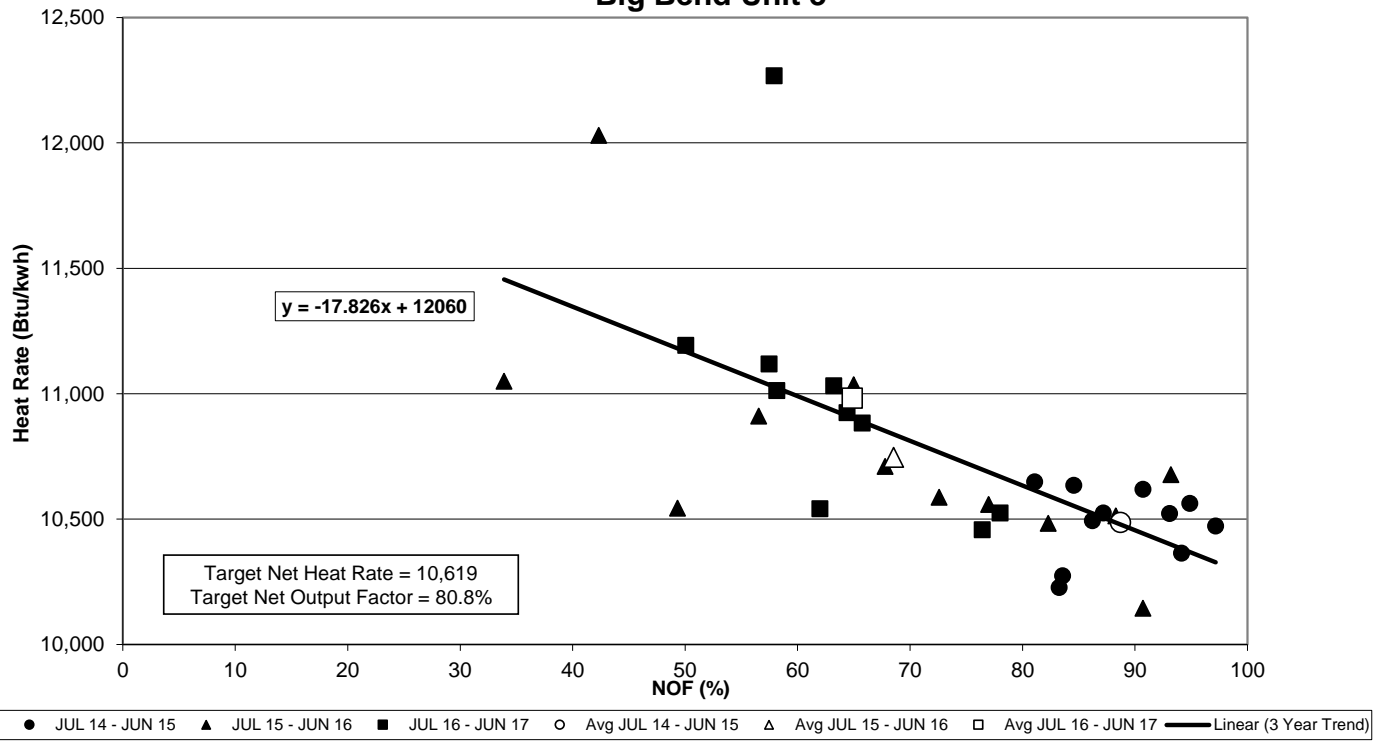
Bayside Unit 2
 EMOR



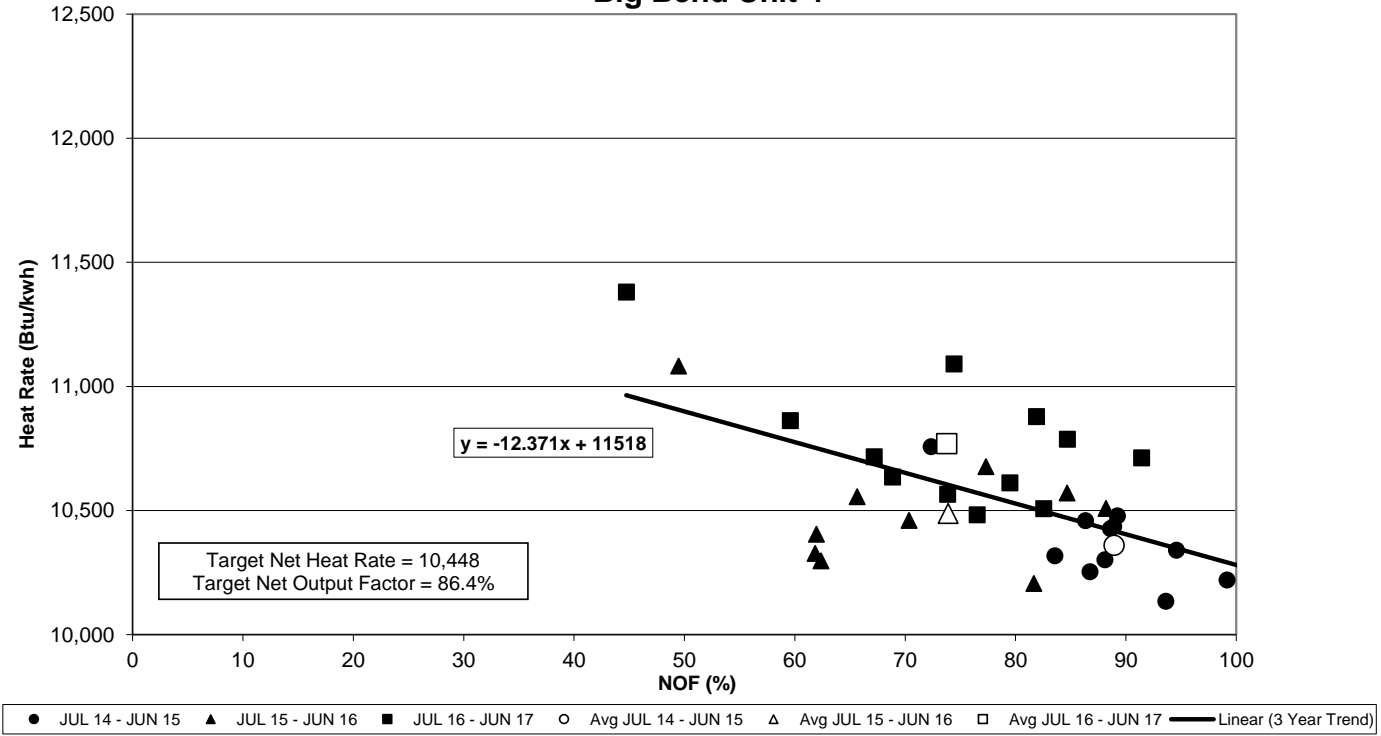
Tampa Electric Company
Heat Rate vs Net Output Factor
Big Bend Unit 2



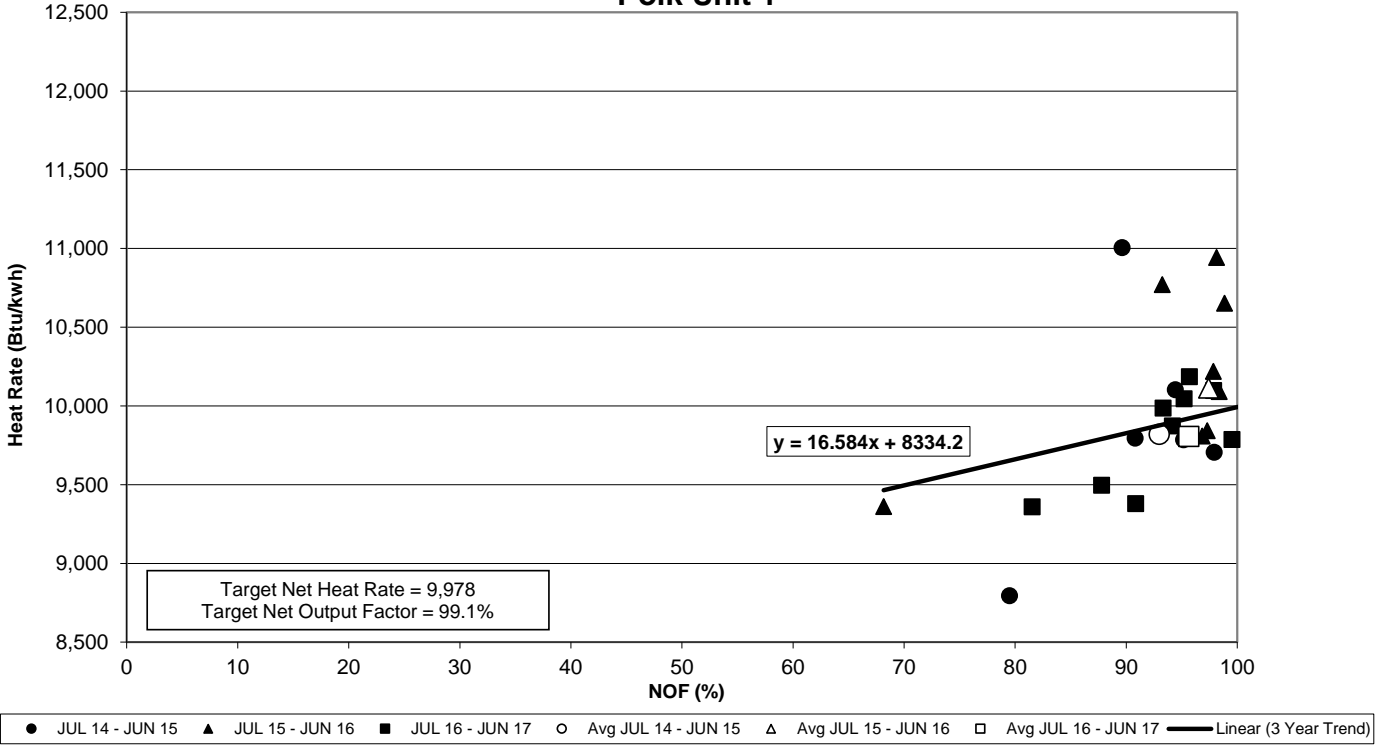
Tampa Electric Company Heat Rate vs Net Output Factor Big Bend Unit 3



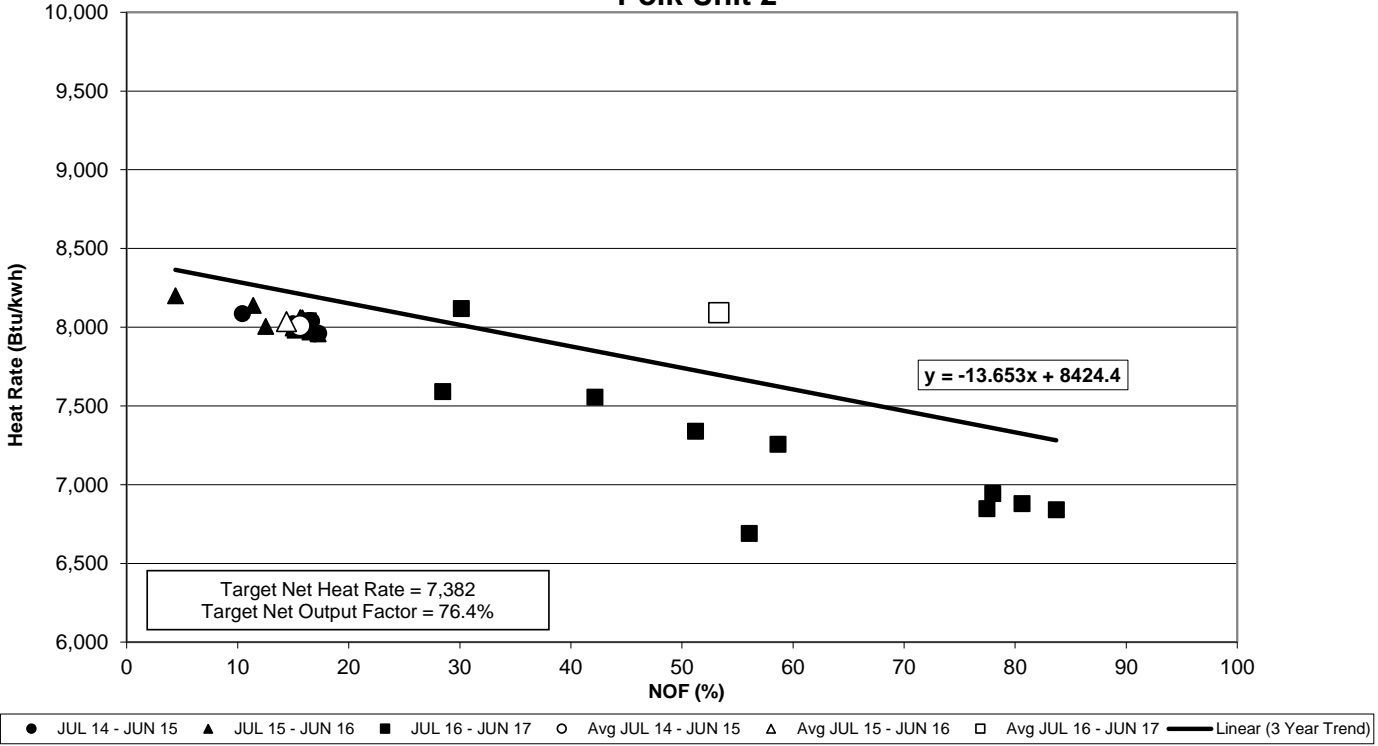
Tampa Electric Company Heat Rate vs Net Output Factor Big Bend Unit 4



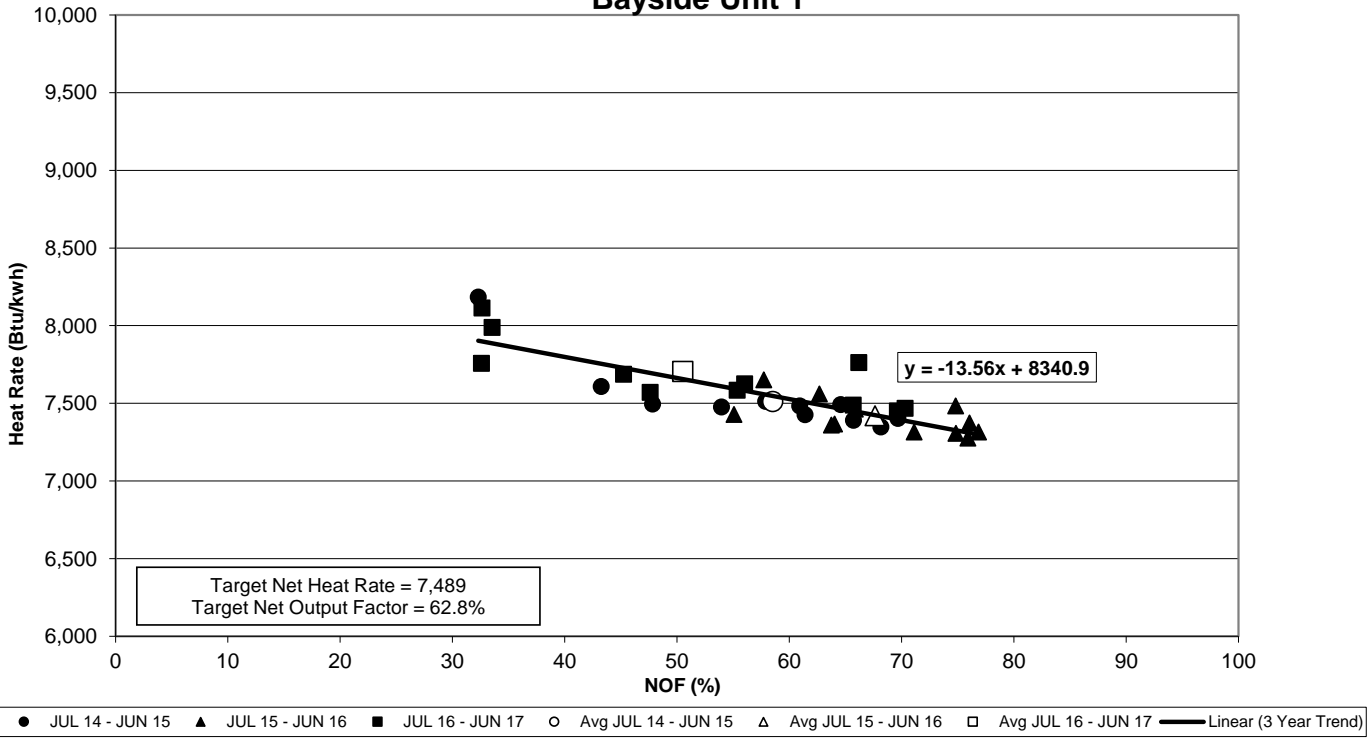
Tampa Electric Company Heat Rate vs Net Output Factor Polk Unit 1



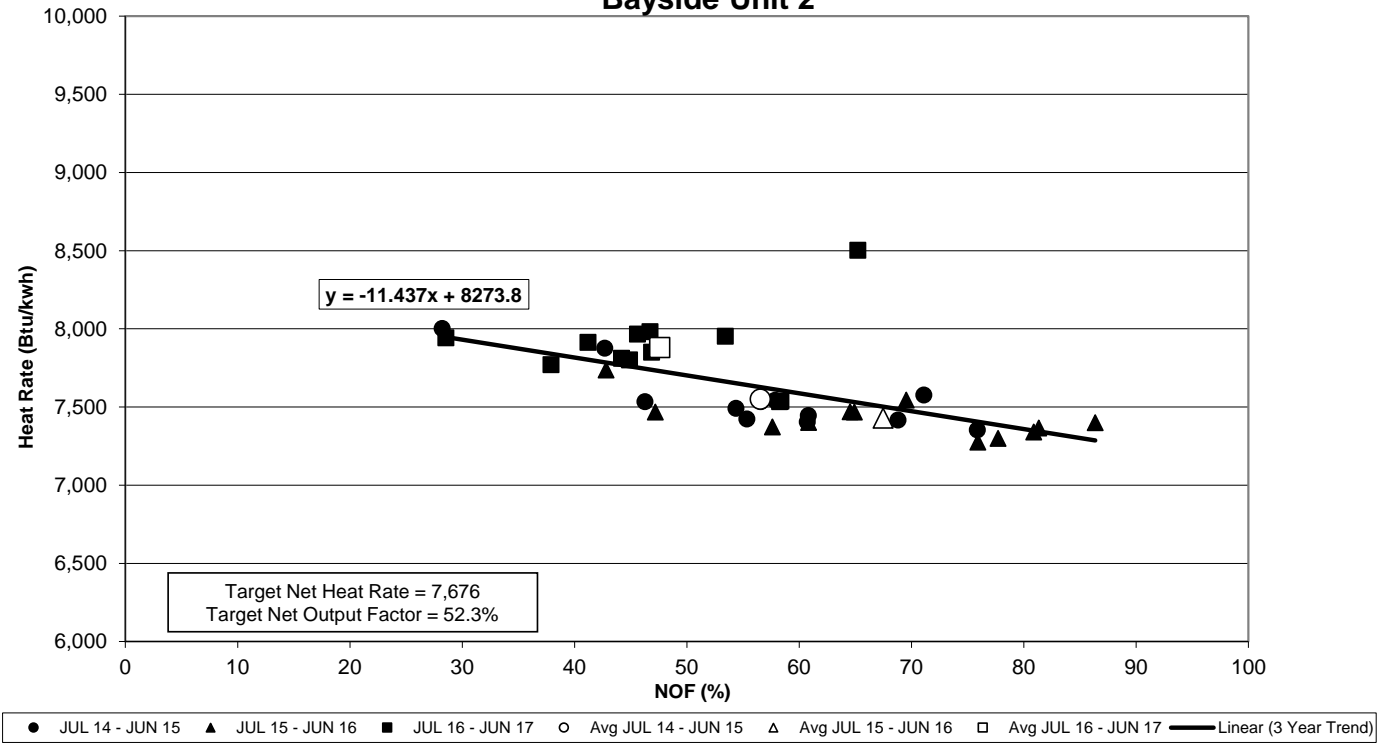
Tampa Electric Company Heat Rate vs Net Output Factor Polk Unit 2



Tampa Electric Company Heat Rate vs Net Output Factor Bayside Unit 1



Tampa Electric Company Heat Rate vs Net Output Factor Bayside Unit 2



**TAMPA ELECTRIC COMPANY
 GENERATING UNITS IN GPIF
 TABLE 4.2
 JANUARY 2018 - DECEMBER 2018**

<u>PLANT / UNIT</u>	<u>ANNUAL GROSS MDC (MW)</u>	<u>ANNUAL NET NDC (MW)</u>
BIG BEND 2	380	365
BIG BEND 3	422	397
BIG BEND 4	472	439
POLK 1	290	220
POLK 2	1,137	1,113
BAYSIDE 1	740	731
BAYSIDE 2	979	968
GPIF TOTAL	<u>4,420</u>	<u>4,233</u>
SYSTEM TOTAL	5,065	4,858
% OF SYSTEM TOTAL	87.3%	87.1%

**TAMPA ELECTRIC COMPANY
 UNIT RATINGS
 JANUARY 2018 - DECEMBER 2018**

<u>PLANT / UNIT</u>	<u>ANNUAL GROSS MDC (MW)</u>	<u>ANNUAL NET NDC (MW)</u>
BAYSIDE 1	740	731
BAYSIDE 2	979	968
BAYSIDE 3	59	58
BAYSIDE 4	59	58
BAYSIDE 5	59	58
BAYSIDE 6	59	58
BAYSIDE TOTAL	<u>1,954</u>	<u>1,930</u>
BIG BEND 1	330	315
BIG BEND 2	380	365
BIG BEND 3	422	397
BIG BEND 4	472	439
BIG BEND CT4	59	58
BIG BEND TOTAL	<u>1,662</u>	<u>1,573</u>
POLK 1	290	220
POLK 2	1,137	1,113
POLK TOTAL	<u>1,427</u>	<u>1,333</u>
SOLAR	21	21
SOLAR TOTAL	<u>21</u>	<u>21</u>
SYSTEM TOTAL	<u>5,065</u>	<u>4,858</u>

**TAMPA ELECTRIC COMPANY
 PERCENT GENERATION BY UNIT
 JANUARY 2018 - DECEMBER 2018**

<u>PLANT</u>	<u>UNIT</u>	<u>NET OUTPUT MWH</u>	<u>PERCENT OF PROJECTED OUTPUT</u>	<u>PERCENT CUMULATIVE PROJECTED OUTPUT</u>
POLK	2	7,218,830	35.92%	35.92%
BAYSIDE	1	3,306,020	16.45%	52.37%
BAYSIDE	2	3,017,020	15.01%	67.39%
BIG BEND	4	2,524,330	12.56%	79.95%
BIG BEND	3	1,743,550	8.68%	88.62%
POLK	1	1,453,040	7.23%	95.85%
BIG BEND	2	418,560	2.08%	97.94%
BIG BEND	1	290,910	1.45%	99.38%
SOLAR		46,920	0.23%	99.62%
BIG BEND CT	4	28,380	0.14%	99.76%
BAYSIDE	5	18,540	0.09%	99.85%
BAYSIDE	6	14,140	0.07%	99.92%
BAYSIDE	3	9,470	0.05%	99.97%
BAYSIDE	4	6,430	0.03%	100.00%

TOTAL GENERATION	20,096,140	100.00%
------------------	------------	---------

GENERATION BY COAL UNITS: <u>6,430,390</u> MWH	GENERATION BY NATURAL GAS UNITS: <u>13,618,830</u> MWH
--	--

% GENERATION BY COAL UNITS <u>32.00%</u>	% GENERATION BY NATURAL GAS UNITS: <u>67.77%</u>
--	--

GENERATION BY SOLAR UNITS: <u>46,920</u> MWH	GENERATION BY GPIF UNITS: <u>19,681,350</u> MWH
--	---

% GENERATION BY SOLAR UNIT <u>0.23%</u>	% GENERATION BY GPIF UNITS: <u>97.94%</u>
---	---

EXHIBIT TO THE TESTIMONY

OF

BRIAN S. BUCKLEY

DOCUMENT NO. 2

SUMMARY OF GPIF TARGETS
JANUARY 2018 - DECEMBER 2018

**TAMPA ELECTRIC COMPANY
 SUMMARY OF GPIF TARGETS
 JANUARY 2018 - DECEMBER 2018**

Unit	Availability			Net Heat Rate
	EAF	POF	EUOF	
Big Bend 2¹	61.5	6.6	31.9	11,320
Big Bend 3²	66.7	6.6	26.7	10,619
Big Bend 4³	78.7	6.6	14.7	10,448
Polk 1⁴	74.4	17.3	8.3	9,978
Polk 2⁵	83.2	5.8	11.0	7,382
Bayside 1⁶	82.5	14.8	2.7	7,489
Bayside 2⁷	77.3	18.6	4.0	7,676

1 Original Sheet 8.401.18E, Page 14

2 Original Sheet 8.401.18E, Page 15

3 Original Sheet 8.401.18E, Page 16

4 Original Sheet 8.401.18E, Page 17

5 Original Sheet 8.401.18E, Page 18

6 Original Sheet 8.401.18E, Page 19

7 Original Sheet 8.401.18E, Page 20



BEFORE THE
FLORIDA PUBLIC SERVICE COMMISSION

DOCKET NO. 20170001-EI
FUEL & PURCHASED POWER COST RECOVERY
AND
CAPACITY COST RECOVERY

PROJECTIONS
JANUARY 2018 THROUGH DECEMBER 2018

TESTIMONY
OF
J. BRENT CALDWELL

FILED: AUGUST 24, 2017