

**Demographic Estimating Conference
Executive Summary
July 10, 2017**

The Demographic Estimating Conference met on July 10, 2017, to adopt a new population forecast. The new estimates reflect recent demographic and economic-related data. In the short-term, the population projections were revised down marginally.

Florida's population is projected to have grown by 325,116 (1.61%) between April 1, 2016 and April 1, 2017. While this increase represents the second greatest annual increase in population since 2006, it is slightly smaller than the change seen in 2016. In the new forecast, births are slightly lower and deaths are marginally higher than the prior forecast. The net effect of the two changes is to lower net natural increase. No significant changes were made to the assumptions regarding net migration.

Annual population change is expected to remain above 308,000 net new residents per year through 2022.

April 1	Population	Percent Change	Change
2012	19,074,434	0.90%	169,364
2013	19,259,543	0.97%	185,109
2014	19,507,369	1.29%	247,826
2015	19,815,183	1.58%	307,814
2016	20,148,654	1.68%	333,471
<i>Forecast</i>			
2017	20,473,770	1.61%	325,116
2018	20,797,856	1.58%	324,086
2019	21,119,578	1.55%	321,722
2020	21,437,753	1.51%	318,175
2021	21,752,002	1.47%	314,249
2022	22,060,593	1.42%	308,591

Between April 1, 2016 and April 1, 2022, population growth is expected to average 318,657 net new residents per year, representing a compound growth rate of 1.52% over this six-year time horizon. These increases are analogous to adding a city slightly smaller than Tampa every year.

Of note, the population estimates developed by the U.S. Census Bureau continue to be higher than the official state estimates adopted by the Demographic Estimating Conference. As of July 1, 2016, this difference was over 381,000 persons. The Legislative Office of Economic and Demographic Research is continuing to work to further understand how the different methodologies contribute to the differences in the two sets of estimates.

Florida Demographic Estimating Conference

Tables Conference Packet

July 10, 2017

Florida Resident Population

April 1

Year	Florida Demographic Estimating Conference February 2017			Florida Demographic Estimating Conference July 2017		
	Population	% Change	Change	Population	% Change	Change
1990	12,938,071	2.27%	287,136	12,938,071	2.27%	287,136
1991	13,258,732	2.48%	320,661	13,258,732	2.48%	320,661
1992	13,497,541	1.80%	238,809	13,497,541	1.80%	238,809
1993	13,730,115	1.72%	232,574	13,730,115	1.72%	232,574
1994	14,043,757	2.28%	313,642	14,043,757	2.28%	313,642
1995	14,335,992	2.08%	292,235	14,335,992	2.08%	292,235
1996	14,623,421	2.00%	287,429	14,623,421	2.00%	287,429
1997	14,938,314	2.15%	314,893	14,938,314	2.15%	314,893
1998	15,230,421	1.96%	292,107	15,230,421	1.96%	292,107
1999	15,580,244	2.30%	349,823	15,580,244	2.30%	349,823
2000	15,982,824	2.58%	402,580	15,982,824	2.58%	402,580
2001	16,305,100	2.02%	322,276	16,305,100	2.02%	322,276
2002	16,634,256	2.02%	329,156	16,634,256	2.02%	329,156
2003	16,979,706	2.08%	345,450	16,979,706	2.08%	345,450
2004	17,374,824	2.33%	395,118	17,374,824	2.33%	395,118
2005	17,778,156	2.32%	403,332	17,778,156	2.32%	403,332
2006	18,154,475	2.12%	376,319	18,154,475	2.12%	376,319
2007	18,446,768	1.61%	292,293	18,446,768	1.61%	292,293
2008	18,613,905	0.91%	167,137	18,613,905	0.91%	167,137
2009	18,687,425	0.39%	73,520	18,687,425	0.39%	73,520
2010	18,801,332	0.61%	113,885	18,801,332	0.61%	113,907
2011	18,905,070	0.55%	103,738	18,905,070	0.55%	103,738
2012	19,074,434	0.90%	169,364	19,074,434	0.90%	169,364
2013	19,259,543	0.97%	185,109	19,259,543	0.97%	185,109
2014	19,507,369	1.29%	247,826	19,507,369	1.29%	247,826
2015	19,815,183	1.58%	307,814	19,815,183	1.58%	307,814
2016	20,148,654	1.68%	333,471	20,148,654	1.68%	333,471
Begins forecast						
2017	20,474,715	1.62%	326,061	20,473,770	1.61%	325,116
2018	20,798,816	1.58%	324,101	20,797,856	1.58%	324,086
2019	21,120,553	1.55%	321,737	21,119,578	1.55%	321,722
2020	21,438,743	1.51%	318,190	21,437,753	1.51%	318,175
2021	21,753,007	1.47%	314,264	21,752,002	1.47%	314,249
2022	22,061,612	1.42%	308,605	22,060,593	1.42%	308,591
2023	22,364,274	1.37%	302,662	22,363,171	1.37%	302,578
2024	22,658,953	1.32%	294,679	22,657,423	1.32%	294,252
5-Year Averages						
2025	22,943,880	1.37%	301,027	22,942,326	1.37%	300,915
2030	24,244,326	1.11%	260,089	24,240,706	1.11%	259,676
2035	25,397,354	0.93%	230,606	25,389,161	0.93%	229,691
2040	26,426,375	0.80%	205,804	26,414,191	0.79%	205,006

Florida Resident Households

April 1

Year	Florida Demographic Estimating Conference February 2017			Florida Demographic Estimating Conference July 2017		
	Households	% Change	Change	Households	% Change	Change
1990	5,134,869	3.40%	168,985	5,134,869	3.40%	168,985
1991	5,283,154	2.89%	148,285	5,283,154	2.89%	148,285
1992	5,378,499	1.80%	95,345	5,378,499	1.80%	95,345
1993	5,478,476	1.86%	99,977	5,478,476	1.86%	99,977
1994	5,589,093	2.02%	110,617	5,589,093	2.02%	110,617
1995	5,697,328	1.94%	108,235	5,697,328	1.94%	108,235
1996	5,806,031	1.91%	108,703	5,806,031	1.91%	108,703
1997	5,929,613	2.13%	123,582	5,929,613	2.13%	123,582
1998	6,040,514	1.87%	110,901	6,040,514	1.87%	110,901
1999	6,182,346	2.35%	141,832	6,182,346	2.35%	141,832
2000	6,338,075	2.52%	155,729	6,338,075	2.52%	155,729
2001	6,467,215	2.04%	129,140	6,467,215	2.04%	129,140
2002	6,599,035	2.04%	131,820	6,599,035	2.04%	131,820
2003	6,737,370	2.10%	138,335	6,737,370	2.10%	138,335
2004	6,895,469	2.35%	158,099	6,895,469	2.35%	158,099
2005	7,056,889	2.34%	161,420	7,056,889	2.34%	161,420
2006	7,207,645	2.14%	150,756	7,207,645	2.14%	150,756
2007	7,312,907	1.46%	105,262	7,312,907	1.46%	105,262
2008	7,368,319	0.76%	55,412	7,368,319	0.76%	55,412
2009	7,386,570	0.25%	18,251	7,386,570	0.25%	18,251
2010	7,537,442	2.04%	150,872	7,420,812	0.46%	34,242
2011	7,461,978	-1.00%	-75,464	7,461,978	0.55%	41,166
2012	7,537,442	1.01%	75,464	7,537,442	1.01%	75,464
2013	7,610,153	0.96%	72,711	7,610,153	0.96%	72,711
2014	7,669,541	0.78%	59,388	7,669,541	0.78%	59,388
2015	7,785,434	1.51%	115,893	7,785,434	1.51%	115,893
2016	7,899,268	1.46%	113,834	7,899,268	1.46%	113,834
Begins forecast						
2017	8,024,836	1.59%	125,568	8,024,836	1.59%	125,568
2018	8,152,543	1.59%	127,707	8,152,543	1.59%	127,707
2019	8,281,439	1.58%	128,896	8,281,439	1.58%	128,896
2020	8,410,671	1.56%	129,232	8,410,671	1.56%	129,232
2021	8,539,384	1.53%	128,713	8,539,384	1.53%	128,713
2022	8,667,052	1.50%	127,668	8,667,052	1.50%	127,668
2023	8,793,920	1.46%	126,868	8,793,892	1.46%	126,840
2024	8,918,998	1.42%	125,078	8,918,808	1.42%	124,916
5-Year Averages						
2025	9,041,862	1.46%	126,238	9,041,667	1.46%	126,199
2030	9,619,744	1.25%	115,576	9,618,752	1.25%	115,417
2035	10,143,301	1.07%	104,711	10,140,497	1.06%	104,349
2040	10,608,883	0.90%	93,116	10,604,481	0.90%	92,797

Quarterly Data Table

	<u>2010-2</u>	<u>2010-3</u>	<u>2010-4</u>	<u>2011-1</u>	<u>2011-2</u>	<u>2011-3</u>	<u>2011-4</u>	<u>2012-1</u>	<u>2012-2</u>	<u>2012-3</u>	<u>2012-4</u>	<u>2013-1</u>	<u>2013-2</u>	<u>2013-3</u>
Population														
FDEC, February 2017	18,813.9	18,838.3	18,862.7	18,890.2	18,923.4	18,962.8	19,006.3	19,051.6	19,096.7	19,141.2	19,186.6	19,234.6	19,287.0	19,344.3
FDEC, July 2017	18,813.9	18,838.3	18,862.7	18,890.2	18,923.4	18,962.8	19,006.3	19,051.6	19,096.7	19,141.2	19,186.6	19,234.6	19,287.0	19,344.3
Population Growth Rate														
FDEC, February 2017	0.59	0.52	0.52	0.58	0.71	0.83	0.92	0.96	0.95	0.94	0.95	1.01	1.09	1.19
FDEC, July 2017	0.59	0.52	0.52	0.58	0.71	0.83	0.92	0.96	0.95	0.94	0.95	1.01	1.09	1.19
Net Change in Population														
FDEC, February 2017	27.9	24.4	24.4	27.5	33.2	39.4	43.5	45.3	45.1	44.5	45.4	48.1	52.3	57.3
FDEC, July 2017	27.9	24.4	24.4	27.5	33.2	39.4	43.5	45.3	45.1	44.5	45.4	48.1	52.4	57.4
Households														
FDEC, February 2017	7,425.2	7,434.2	7,443.9	7,455.6	7,470.0	7,487.3	7,506.7	7,527.1	7,547.6	7,567.4	7,585.9	7,602.4	7,616.7	7,629.7
FDEC, July 2017	7,425.2	7,434.2	7,443.9	7,455.6	7,470.0	7,487.3	7,506.7	7,527.1	7,547.6	7,567.4	7,585.9	7,602.4	7,616.7	7,629.7
Household Growth Rate														
FDEC, February 2017	0.49	0.48	0.52	0.63	0.78	0.93	1.04	1.09	1.09	1.05	0.98	0.88	0.76	0.68
FDEC, July 2017	0.49	0.48	0.52	0.63	0.78	0.93	1.04	1.09	1.09	1.05	0.98	0.88	0.76	0.68
Net Change in Households														
FDEC, February 2017	9.1	9.0	9.7	11.6	14.4	17.3	19.4	20.4	20.5	19.8	18.5	16.6	14.3	13.0
FDEC, July 2017	9.1	9.0	9.7	11.6	14.4	17.3	19.4	20.4	20.5	19.8	18.5	16.6	14.3	13.0
Household Size														
FDEC, February 2017	2.534	2.534	2.534	2.534	2.533	2.533	2.532	2.531	2.530	2.529	2.529	2.530	2.532	2.535
FDEC, July 2017	2.534	2.534	2.534	2.534	2.533	2.533	2.532	2.531	2.530	2.529	2.529	2.530	2.532	2.535
Household Size Growth Rate														
FDEC, February 2017	0.10	0.04	-0.01	-0.04	-0.07	-0.10	-0.12	-0.13	-0.14	-0.12	-0.03	0.13	0.33	0.51
FDEC, July 2017	0.10	0.04	-0.01	-0.04	-0.07	-0.10	-0.12	-0.13	-0.14	-0.12	-0.03	0.13	0.33	0.51
Net Migration														
FDEC, February 2017	17.2	14.1	14.3	17.2	23.1	29.3	33.7	35.8	35.7	35.3	36.3	39.1	43.5	48.6
FDEC, July 2017	17.2	14.1	14.3	17.2	23.1	29.3	33.7	35.8	35.7	35.3	36.3	39.1	43.5	48.6
Births														
FDEC, February 2017	53.7	53.5	53.3	53.4	53.3	53.3	53.2	53.2	53.2	53.3	53.4	53.5	53.7	53.9
FDEC, July 2017	53.7	53.5	53.3	53.4	53.3	53.3	53.2	53.2	53.2	53.3	53.4	53.5	53.7	53.9
Deaths														
FDEC, February 2017	43.1	43.2	43.2	43.1	43.1	43.3	43.4	43.6	43.8	44.1	44.3	44.6	44.9	45.1
FDEC, July 2017	43.1	43.2	43.2	43.1	43.1	43.2	43.4	43.6	43.8	44.1	44.3	44.6	44.9	45.1
Net Natural Increase														
FDEC, February 2017	10.6	10.3	10.0	10.3	10.2	10.0	9.8	9.5	9.3	9.2	9.0	8.9	8.8	8.7
FDEC, July 2017	10.6	10.3	10.0	10.3	10.2	10.0	9.9	9.5	9.3	9.2	9.0	8.9	8.8	8.7

Quarterly Data Table

	<u>2013-4</u>	<u>2014-1</u>	<u>2014-2</u>	<u>2014-3</u>	<u>2014-4</u>	<u>2015-1</u>	<u>2015-2</u>	<u>2015-3</u>	<u>2015-4</u>	<u>2016-1</u>	<u>2016-2</u>	<u>2016-3</u>	<u>2016-4</u>	<u>2017-1</u>
Population														
FDEC, February 2017	19,406.5	19,473.0	19,543.6	19,617.8	19,695.0	19,774.7	19,856.5	19,939.6	20,023.3	20,106.9	20,189.9	20,271.9	20,353.2	20,434.3
FDEC, July 2017	19,406.5	19,473.0	19,543.6	19,617.8	19,695.0	19,774.7	19,856.5	19,939.6	20,023.4	20,107.0	20,189.8	20,271.6	20,352.6	20,433.4
Population Growth Rate														
FDEC, February 2017	1.29	1.38	1.46	1.53	1.58	1.63	1.66	1.68	1.69	1.68	1.66	1.63	1.61	1.60
FDEC, July 2017	1.29	1.38	1.46	1.53	1.58	1.63	1.66	1.69	1.69	1.68	1.66	1.63	1.61	1.60
Net Change in Population														
FDEC, February 2017	62.1	66.6	70.6	74.2	77.2	79.7	81.7	83.1	83.7	83.7	82.9	82.0	81.3	81.0
FDEC, July 2017	62.1	66.6	70.6	74.1	77.2	79.8	81.8	83.1	83.8	83.6	82.8	81.8	81.1	80.8
Households														
FDEC, February 2017	7,643.4	7,660.1	7,681.9	7,708.7	7,738.8	7,769.9	7,800.1	7,828.8	7,856.8	7,885.0	7,914.3	7,945.0	7,976.6	8,008.7
FDEC, July 2017	7,643.4	7,660.1	7,681.9	7,708.7	7,738.8	7,769.9	7,800.1	7,828.8	7,856.8	7,885.0	7,914.3	7,945.0	7,976.6	8,008.7
Household Growth Rate														
FDEC, February 2017	0.72	0.88	1.14	1.40	1.57	1.62	1.56	1.48	1.44	1.44	1.49	1.56	1.60	1.62
FDEC, July 2017	0.72	0.88	1.14	1.40	1.57	1.62	1.56	1.48	1.44	1.44	1.49	1.56	1.60	1.62
Net Change in Households														
FDEC, February 2017	13.7	16.7	21.8	26.8	30.1	31.1	30.2	28.7	28.0	28.2	29.3	30.7	31.6	32.1
FDEC, July 2017	13.7	16.7	21.8	26.8	30.1	31.1	30.2	28.7	28.0	28.2	29.3	30.7	31.6	32.1
Household Size														
FDEC, February 2017	2.539	2.542	2.544	2.545	2.545	2.545	2.546	2.547	2.549	2.550	2.551	2.552	2.552	2.552
FDEC, July 2017	2.539	2.542	2.544	2.545	2.545	2.545	2.546	2.547	2.549	2.550	2.551	2.552	2.552	2.551
Household Size Growth Rate														
FDEC, February 2017	0.57	0.50	0.31	0.12	0.01	0.01	0.10	0.20	0.25	0.24	0.16	0.07	0.01	-0.02
FDEC, July 2017	0.57	0.50	0.31	0.12	0.01	0.01	0.10	0.20	0.25	0.23	0.16	0.07	0.01	-0.02
Net Migration														
FDEC, February 2017	53.4	57.7	61.8	65.5	68.6	71.3	73.4	75.0	75.8	76.1	75.7	75.0	74.5	74.2
FDEC, July 2017	53.4	57.7	61.8	65.5	68.6	71.3	73.4	75.0	75.9	76.3	75.7	75.0	74.5	74.4
Births														
FDEC, February 2017	54.1	54.6	54.8	55.1	55.4	55.8	56.0	56.2	56.3	56.4	56.5	56.6	56.8	57.1
FDEC, July 2017	54.1	54.5	54.8	55.1	55.4	55.8	56.0	56.2	56.3	56.1	56.2	56.3	56.4	56.7
Deaths														
FDEC, February 2017	45.4	45.7	46.1	46.4	46.8	47.3	47.7	48.1	48.5	48.9	49.2	49.6	49.9	50.2
FDEC, July 2017	45.4	45.7	46.1	46.4	46.8	47.3	47.7	48.1	48.4	48.8	49.1	49.5	49.9	50.3
Net Natural Increase														
FDEC, February 2017	8.7	8.8	8.8	8.7	8.6	8.5	8.3	8.1	7.9	7.5	7.3	7.0	6.8	6.9
FDEC, July 2017	8.7	8.8	8.8	8.7	8.6	8.5	8.3	8.1	7.8	7.3	7.1	6.8	6.6	6.4

Quarterly Data Table

	<u>2017-2</u>	<u>2017-3</u>	<u>2017-4</u>	<u>2018-1</u>	<u>2018-2</u>	<u>2018-3</u>	<u>2018-4</u>	<u>2019-1</u>	<u>2019-2</u>	<u>2019-3</u>	<u>2019-4</u>	<u>2020-1</u>	<u>2020-2</u>	<u>2020-3</u>
Population														
FDEC, February 2017	20,515.2	20,596.3	20,677.3	20,758.3	20,839.2	20,919.8	21,000.3	21,080.5	21,160.5	21,240.3	21,319.8	21,399.1	21,478.2	21,557.1
FDEC, July 2017	20,514.2	20,595.2	20,676.3	20,757.4	20,838.2	20,918.9	20,999.3	21,079.5	21,159.5	21,239.3	21,318.8	21,398.1	21,477.3	21,556.1
Population Growth Rate														
FDEC, February 2017	1.59	1.59	1.58	1.58	1.57	1.56	1.55	1.54	1.53	1.52	1.51	1.50	1.49	1.48
FDEC, July 2017	1.59	1.59	1.58	1.58	1.57	1.56	1.55	1.54	1.53	1.52	1.51	1.50	1.49	1.48
Net Change in Population														
FDEC, February 2017	81.0	81.0	81.1	81.0	80.9	80.7	80.4	80.2	80.0	79.8	79.5	79.3	79.1	78.9
FDEC, July 2017	80.8	81.0	81.1	81.0	80.9	80.7	80.4	80.2	80.0	79.8	79.5	79.3	79.1	78.9
Households														
FDEC, February 2017	8,040.9	8,072.8	8,104.7	8,136.6	8,168.6	8,200.7	8,233.0	8,265.3	8,297.6	8,329.9	8,362.2	8,394.5	8,426.8	8,459.0
FDEC, July 2017	8,040.9	8,072.8	8,104.7	8,136.6	8,168.6	8,200.7	8,233.0	8,265.3	8,297.6	8,329.9	8,362.2	8,394.5	8,426.8	8,459.0
Household Growth Rate														
FDEC, February 2017	1.62	1.60	1.59	1.58	1.58	1.58	1.58	1.58	1.57	1.57	1.56	1.55	1.55	1.54
FDEC, July 2017	1.62	1.60	1.59	1.58	1.58	1.58	1.58	1.58	1.57	1.57	1.56	1.55	1.55	1.54
Net Change in Households														
FDEC, February 2017	32.1	32.0	31.9	31.9	32.0	32.1	32.2	32.3	32.3	32.3	32.3	32.3	32.3	32.2
FDEC, July 2017	32.1	32.0	31.9	31.9	32.0	32.1	32.2	32.3	32.3	32.3	32.3	32.3	32.3	32.2
Household Size														
FDEC, February 2017	2.551	2.551	2.551	2.551	2.551	2.551	2.551	2.550	2.550	2.550	2.550	2.549	2.549	2.548
FDEC, July 2017	2.551	2.551	2.551	2.551	2.551	2.551	2.551	2.550	2.550	2.550	2.549	2.549	2.549	2.548
Household Size Growth Rate														
FDEC, February 2017	-0.02	-0.01	0.00	-0.01	-0.01	-0.03	-0.03	-0.04	-0.05	-0.05	-0.05	-0.06	-0.06	-0.06
FDEC, July 2017	-0.02	-0.01	0.00	-0.01	-0.01	-0.03	-0.03	-0.04	-0.05	-0.05	-0.05	-0.06	-0.06	-0.06
Net Migration														
FDEC, February 2017	74.1	74.2	74.3	74.2	74.1	73.9	73.8	73.6	73.4	73.2	73.0	72.9	72.7	72.5
FDEC, July 2017	74.6	74.9	75.1	75.1	75.0	74.9	74.7	74.3	74.1	73.9	73.8	73.6	73.4	73.3
Births														
FDEC, February 2017	57.4	57.6	57.8	58.1	58.3	58.6	58.8	59.0	59.2	59.5	59.7	59.9	60.1	60.3
FDEC, July 2017	56.8	57.1	57.3	57.5	57.8	58.0	58.3	58.6	58.9	59.1	59.4	59.5	59.8	60.0
Deaths														
FDEC, February 2017	50.5	50.8	51.0	51.3	51.6	51.8	52.1	52.4	52.6	52.9	53.2	53.4	53.7	54.0
FDEC, July 2017	50.6	51.0	51.3	51.6	51.9	52.2	52.5	52.8	53.0	53.3	53.6	53.8	54.1	54.3
Net Natural Increase														
FDEC, February 2017	6.9	6.9	6.8	6.8	6.8	6.7	6.7	6.6	6.6	6.6	6.5	6.5	6.4	6.4
FDEC, July 2017	6.2	6.1	6.0	5.9	5.8	5.8	5.8	5.9	5.8	5.8	5.8	5.7	5.7	5.6

Quarterly Data Table

	<u>2020-4</u>	<u>2021-1</u>	<u>2021-2</u>	<u>2021-3</u>	<u>2021-4</u>	<u>2022-1</u>	<u>2022-2</u>	<u>2022-3</u>	<u>2022-4</u>	<u>2023-1</u>	<u>2023-2</u>	<u>2023-3</u>	<u>2023-4</u>	<u>2024-1</u>
Population														
FDEC, February 2017	21,635.7	21,714.0	21,791.9	21,869.4	21,946.5	22,023.3	22,099.7	22,175.8	22,251.5	22,326.8	22,401.5	22,475.8	22,549.5	22,622.6
FDEC, July 2017	21,634.7	21,713.0	21,790.9	21,868.4	21,945.5	22,022.3	22,098.7	22,174.8	22,250.5	22,325.7	22,400.4	22,474.5	22,548.1	22,621.1
Population Growth Rate														
FDEC, February 2017	1.47	1.45	1.44	1.43	1.42	1.41	1.40	1.38	1.37	1.36	1.35	1.33	1.32	1.30
FDEC, July 2017	1.47	1.45	1.44	1.43	1.42	1.41	1.40	1.38	1.37	1.36	1.34	1.33	1.32	1.30
Net Change in Population														
FDEC, February 2017	78.6	78.3	77.9	77.5	77.1	76.8	76.4	76.1	75.7	75.2	74.8	74.2	73.7	73.1
FDEC, July 2017	78.6	78.3	77.9	77.5	77.1	76.8	76.4	76.1	75.7	75.2	74.7	74.1	73.6	73.0
Households														
FDEC, February 2017	8,491.2	8,523.3	8,555.4	8,587.4	8,619.3	8,651.1	8,683.0	8,714.8	8,746.5	8,778.1	8,809.7	8,841.1	8,872.3	8,903.5
FDEC, July 2017	8,491.2	8,523.3	8,555.4	8,587.4	8,619.3	8,651.1	8,683.0	8,714.8	8,746.5	8,778.1	8,809.6	8,841.0	8,872.2	8,903.3
Household Growth Rate														
FDEC, February 2017	1.53	1.52	1.51	1.50	1.49	1.49	1.48	1.47	1.46	1.45	1.44	1.43	1.42	1.41
FDEC, July 2017	1.53	1.52	1.51	1.50	1.49	1.49	1.48	1.47	1.46	1.45	1.44	1.43	1.42	1.41
Net Change in Households														
FDEC, February 2017	32.2	32.1	32.0	32.0	31.9	31.9	31.8	31.8	31.7	31.6	31.5	31.4	31.3	31.1
FDEC, July 2017	32.2	32.1	32.0	32.0	31.9	31.9	31.8	31.8	31.7	31.6	31.5	31.4	31.2	31.1
Household Size														
FDEC, February 2017	2.548	2.548	2.547	2.547	2.546	2.546	2.545	2.545	2.544	2.543	2.543	2.542	2.542	2.541
FDEC, July 2017	2.548	2.547	2.547	2.547	2.546	2.546	2.545	2.545	2.544	2.543	2.543	2.542	2.541	2.541
Household Size Growth Rate														
FDEC, February 2017	-0.06	-0.07	-0.07	-0.07	-0.08	-0.08	-0.08	-0.09	-0.09	-0.09	-0.10	-0.10	-0.10	-0.11
FDEC, July 2017	-0.06	-0.07	-0.07	-0.07	-0.08	-0.08	-0.08	-0.09	-0.09	-0.09	-0.10	-0.10	-0.10	-0.11
Net Migration														
FDEC, February 2017	72.3	72.1	71.9	71.6	71.4	71.2	71.0	70.8	70.5	70.2	69.9	69.5	69.1	68.7
FDEC, July 2017	73.1	72.9	72.6	72.3	72.1	71.9	71.7	71.5	71.3	70.9	70.6	70.1	69.7	69.3
Births														
FDEC, February 2017	60.6	60.8	60.9	61.1	61.3	61.4	61.6	61.7	61.9	62.1	62.2	62.4	62.5	62.7
FDEC, July 2017	60.2	60.4	60.5	60.7	60.9	61.0	61.2	61.3	61.5	61.6	61.8	61.9	62.1	62.2
Deaths														
FDEC, February 2017	54.3	54.6	54.9	55.2	55.5	55.8	56.1	56.4	56.7	57.1	57.4	57.7	58.0	58.2
FDEC, July 2017	54.6	55.0	55.2	55.5	55.8	56.2	56.5	56.8	57.0	57.3	57.6	57.9	58.2	58.5
Net Natural Increase														
FDEC, February 2017	6.3	6.2	6.0	5.9	5.7	5.6	5.4	5.3	5.2	5.0	4.9	4.7	4.6	4.4
FDEC, July 2017	5.5	5.4	5.3	5.2	5.0	4.9	4.7	4.6	4.4	4.3	4.1	4.0	3.8	3.7

Quarterly Data Table

	<u>2024-2</u>	<u>2024-3</u>	<u>2024-4</u>	<u>2025-1</u>	<u>2025-2</u>	<u>2025-3</u>	<u>2025-4</u>	<u>2026-1</u>	<u>2026-2</u>	<u>2026-3</u>	<u>2026-4</u>	<u>2027-1</u>	<u>2027-2</u>
Population													
FDEC, February 2017	22,695.0	22,766.9	22,838.1	22,908.7	22,978.8	23,048.3	23,117.2	23,185.5	23,253.3	23,320.4	23,387.1	23,453.2	23,518.8
FDEC, July 2017	22,693.5	22,765.3	22,836.5	22,907.2	22,977.2	23,046.7	23,115.6	23,183.9	23,251.6	23,318.7	23,385.2	23,451.3	23,516.8
Population Growth Rate													
FDEC, February 2017	1.29	1.27	1.26	1.24	1.23	1.22	1.20	1.19	1.17	1.16	1.15	1.14	1.12
FDEC, July 2017	1.29	1.27	1.26	1.24	1.23	1.22	1.20	1.19	1.17	1.16	1.15	1.13	1.12
Net Change in Population													
FDEC, February 2017	72.5	71.8	71.2	70.6	70.1	69.5	68.9	68.3	67.7	67.2	66.6	66.1	65.6
FDEC, July 2017	72.4	71.8	71.2	70.6	70.1	69.5	68.9	68.3	67.7	67.1	66.6	66.0	65.5
Households													
FDEC, February 2017	8,934.5	8,965.3	8,996.0	9,026.6	9,057.1	9,087.4	9,117.5	9,147.5	9,177.4	9,207.1	9,236.7	9,266.1	9,295.4
FDEC, July 2017	8,934.3	8,965.1	8,995.8	9,026.4	9,056.9	9,087.2	9,117.3	9,147.3	9,177.2	9,206.8	9,236.4	9,265.8	9,295.0
Household Growth Rate													
FDEC, February 2017	1.40	1.39	1.38	1.37	1.36	1.35	1.33	1.32	1.31	1.30	1.29	1.28	1.27
FDEC, July 2017	1.40	1.39	1.38	1.37	1.36	1.35	1.33	1.32	1.31	1.30	1.29	1.28	1.27
Net Change in Households													
FDEC, February 2017	31.0	30.9	30.7	30.6	30.4	30.3	30.2	30.0	29.9	29.7	29.6	29.4	29.3
FDEC, July 2017	31.0	30.8	30.7	30.6	30.4	30.3	30.2	30.0	29.8	29.7	29.5	29.4	29.3
Household Size													
FDEC, February 2017	2.540	2.539	2.539	2.538	2.537	2.536	2.535	2.535	2.534	2.533	2.532	2.531	2.530
FDEC, July 2017	2.540	2.539	2.539	2.538	2.537	2.536	2.535	2.535	2.534	2.533	2.532	2.531	2.530
Household Size Growth Rate													
FDEC, February 2017	-0.11	-0.11	-0.12	-0.12	-0.13	-0.13	-0.13	-0.13	-0.14	-0.14	-0.14	-0.14	-0.14
FDEC, July 2017	-0.11	-0.11	-0.12	-0.12	-0.13	-0.13	-0.13	-0.13	-0.14	-0.14	-0.14	-0.14	-0.14
Net Migration													
FDEC, February 2017	68.2	67.7	67.2	66.8	66.3	65.9	65.6	65.2	64.8	64.5	64.2	63.9	63.6
FDEC, July 2017	68.8	68.4	67.9	67.5	67.0	66.6	66.2	65.9	65.5	65.1	64.7	64.5	64.2
Births													
FDEC, February 2017	62.8	63.0	63.1	63.3	63.4	63.6	63.7	63.8	64.0	64.1	64.2	64.3	64.4
FDEC, July 2017	62.4	62.5	62.6	62.8	62.9	63.1	63.2	63.3	63.4	63.5	63.7	63.7	63.8
Deaths													
FDEC, February 2017	58.5	58.8	59.1	59.4	59.7	60.0	60.3	60.7	61.0	61.4	61.7	62.1	62.4
FDEC, July 2017	58.8	59.1	59.4	59.6	59.9	60.2	60.5	60.9	61.2	61.5	61.8	62.2	62.5
Net Natural Increase													
FDEC, February 2017	4.3	4.1	4.0	3.9	3.7	3.6	3.4	3.2	2.9	2.7	2.4	2.2	2.0
FDEC, July 2017	3.6	3.4	3.3	3.2	3.0	2.9	2.7	2.4	2.2	2.0	1.8	1.6	1.3

Fiscal Year Data Table

	<u>2000-01</u>	<u>2001-02</u>	<u>2002-03</u>	<u>2003-04</u>	<u>2004-05</u>	<u>2005-06</u>	<u>2006-07</u>	<u>2007-08</u>	<u>2008-09</u>	<u>2009-10</u>	<u>2010-11</u>	<u>2011-12</u>	<u>2012-13</u>	<u>2013-14</u>	<u>2014-15</u>
Population															
FDEC, February 2017	16,228.0	16,551.2	16,892.0	17,273.8	17,677.3	18,062.2	18,378.2	18,578.9	18,671.4	18,770.4	18,878.6	19,029.3	19,212.3	19,441.9	19,736.0
FDEC, July 2017	16,228.0	16,551.2	16,892.0	17,273.8	17,677.3	18,062.2	18,378.2	18,578.9	18,671.4	18,770.4	18,878.6	19,029.3	19,212.3	19,441.9	19,736.0
Growth Rate															
FDEC, February 2017	2.18	1.99	2.06	2.26	2.34	2.18	1.75	1.09	0.50	0.53	0.58	0.80	0.96	1.19	1.51
FDEC, July 2017	2.18	1.99	2.06	2.26	2.34	2.18	1.75	1.09	0.50	0.53	0.58	0.80	0.96	1.19	1.51
Net Change in Population															
FDEC, February 2017	346.4	323.2	340.9	381.8	403.5	384.9	316.0	200.7	92.5	99.0	108.2	150.7	183.0	229.5	294.1
FDEC, July 2017	346.4	323.2	340.9	381.8	403.5	384.9	316.0	200.7	92.5	99.0	108.2	150.7	183.0	229.5	294.1
Households															
FDEC, February 2017	6,436.3	6,565.6	6,702.3	6,855.2	7,016.6	7,171.1	7,289.0	7,356.8	7,382.6	7,411.4	7,450.9	7,517.2	7,593.1	7,653.8	7,754.4
FDEC, July 2017	6,436.3	6,565.6	6,702.3	6,855.2	7,016.6	7,171.1	7,289.0	7,356.8	7,382.6	7,411.4	7,450.9	7,517.2	7,593.1	7,653.8	7,754.4
Growth Rate															
FDEC, February 2017	2.21	2.01	2.08	2.28	2.36	2.20	1.64	0.93	0.35	0.39	0.53	0.89	1.01	0.80	1.31
FDEC, July 2017	2.21	2.01	2.08	2.28	2.36	2.20	1.64	0.93	0.35	0.39	0.53	0.89	1.01	0.80	1.31
Net Change in Households															
FDEC, February 2017	139.0	129.2	136.7	152.9	161.5	154.5	117.9	67.8	25.8	28.8	39.5	66.3	75.9	60.7	100.6
FDEC, July 2017	139.0	129.2	136.7	152.9	161.5	154.5	117.9	67.8	25.8	28.8	39.5	66.3	75.9	60.7	100.6
Household Size															
FDEC, February 2017	2.521	2.521	2.520	2.520	2.519	2.519	2.521	2.525	2.529	2.533	2.534	2.531	2.530	2.540	2.545
FDEC, July 2017	2.521	2.521	2.520	2.520	2.519	2.519	2.521	2.525	2.529	2.533	2.534	2.531	2.530	2.540	2.545
Growth Rate															
FDEC, February 2017	-0.03	-0.02	-0.02	-0.02	-0.02	-0.02	0.10	0.16	0.15	0.14	0.04	-0.09	-0.05	0.39	0.20
FDEC, July 2017	-0.03	-0.02	-0.02	-0.02	-0.02	-0.02	0.10	0.16	0.15	0.14	0.04	-0.09	-0.05	0.39	0.20
Net Migration															
FDEC, February 2017	306.0	285.5	300.4	335.0	351.1	322.9	245.0	133.7	36.3	52.7	67.4	112.0	147.0	194.5	260.1
FDEC, July 2017	306.0	285.5	300.4	335.0	351.1	322.9	245.0	133.7	36.3	52.7	67.4	112.0	147.0	194.5	260.0
Births															
FDEC, February 2017	205.4	205.4	208.5	215.0	221.8	232.1	239.3	236.0	226.4	217.4	213.5	212.9	213.8	217.4	222.3
FDEC, July 2017	205.4	205.4	208.5	215.0	221.8	232.1	239.3	236.0	226.4	217.4	213.5	212.9	213.8	217.4	222.3
Deaths															
FDEC, February 2017	165.0	167.7	168.1	168.3	169.4	170.1	168.3	169.0	170.2	171.1	172.7	174.1	177.8	182.4	188.2
FDEC, July 2017	165.0	167.7	168.1	168.3	169.4	170.1	168.3	169.0	170.2	171.1	172.7	174.1	177.8	182.4	188.2
Net Natural Increase															
FDEC, February 2017	40.3	37.7	40.4	46.7	52.4	62.0	71.0	67.0	56.2	46.3	40.8	38.8	36.0	35.0	34.1
FDEC, July 2017	40.3	37.7	40.4	46.7	52.4	62.0	71.0	67.0	56.2	46.3	40.8	38.8	36.0	35.0	34.1

Fiscal Year Data Table

	<u>2015-16</u>	<u>2016-17</u>	<u>2017-18</u>	<u>2018-19</u>	<u>2019-20</u>	<u>2020-21</u>	<u>2021-22</u>	<u>2022-23</u>	<u>2023-24</u>	<u>2024-25</u>	<u>2025-26</u>	<u>2026-27</u>
Population												
FDEC, February 2017	20,064.9	20,393.7	20,717.8	21,040.3	21,359.4	21,674.7	21,984.7	22,288.9	22,585.7	22,873.1	23,151.1	23,419.9
FDEC, July 2017	20,064.9	20,393.0	20,716.8	21,039.3	21,358.4	21,673.7	21,983.7	22,287.8	22,584.3	22,871.5	23,149.4	23,418.0
Growth Rate												
FDEC, February 2017	1.67	1.64	1.59	1.56	1.52	1.48	1.43	1.38	1.33	1.27	1.22	1.16
FDEC, July 2017	1.67	1.63	1.59	1.56	1.52	1.48	1.43	1.38	1.33	1.27	1.22	1.16
Net Change in Population												
FDEC, February 2017	328.9	328.7	324.1	322.5	319.1	315.3	310.1	304.2	296.8	287.4	278.0	268.8
FDEC, July 2017	328.9	328.0	323.8	322.5	319.1	315.3	310.1	304.1	296.4	287.3	277.9	268.6
Households												
FDEC, February 2017	7,871.2	7,992.8	8,120.7	8,249.1	8,378.4	8,507.2	8,635.2	8,762.3	8,887.8	9,011.3	9,132.5	9,251.3
FDEC, July 2017	7,871.2	7,992.8	8,120.7	8,249.1	8,378.4	8,507.2	8,635.2	8,762.2	8,887.7	9,011.0	9,132.2	9,251.0
Growth Rate												
FDEC, February 2017	1.51	1.54	1.60	1.58	1.57	1.54	1.50	1.47	1.43	1.39	1.35	1.30
FDEC, July 2017	1.51	1.54	1.60	1.58	1.57	1.54	1.50	1.47	1.43	1.39	1.34	1.30
Net Change in Households												
FDEC, February 2017	116.9	121.6	127.9	128.5	129.2	128.9	127.9	127.1	125.6	123.4	121.2	118.9
FDEC, July 2017	116.9	121.6	127.9	128.5	129.2	128.9	127.9	127.1	125.4	123.4	121.2	118.8
Household Size												
FDEC, February 2017	2.549	2.552	2.551	2.551	2.549	2.548	2.546	2.544	2.541	2.538	2.535	2.532
FDEC, July 2017	2.549	2.551	2.551	2.550	2.549	2.548	2.546	2.544	2.541	2.538	2.535	2.531
Growth Rate												
FDEC, February 2017	0.16	0.09	-0.01	-0.02	-0.05	-0.06	-0.07	-0.09	-0.10	-0.11	-0.13	-0.14
FDEC, July 2017	0.16	0.09	-0.01	-0.02	-0.05	-0.06	-0.07	-0.09	-0.10	-0.11	-0.13	-0.14
Net Migration												
FDEC, February 2017	298.2	301.1	296.9	295.9	293.1	290.4	287.4	283.8	278.8	271.6	264.9	259.5
FDEC, July 2017	298.6	302.0	300.0	299.3	296.0	293.5	290.3	286.7	281.3	274.3	267.7	261.8
Births												
FDEC, February 2017	225.4	227.8	231.9	235.6	239.2	242.6	245.4	247.9	250.4	252.8	255.0	256.9
FDEC, July 2017	224.7	226.2	229.6	233.8	237.8	241.0	243.8	246.2	248.6	250.9	253.0	254.8
Deaths												
FDEC, February 2017	194.6	200.2	204.7	209.0	213.2	217.7	222.7	227.6	232.4	237.0	242.0	247.6
FDEC, July 2017	194.4	200.2	205.8	210.6	214.7	219.2	224.0	228.8	233.4	237.9	242.8	248.0
Net Natural Increase												
FDEC, February 2017	30.8	27.6	27.2	26.6	26.0	24.9	22.7	20.3	18.0	15.7	13.0	9.3
FDEC, July 2017	30.3	26.0	23.8	23.3	23.0	21.8	19.8	17.4	15.1	12.9	10.2	6.7

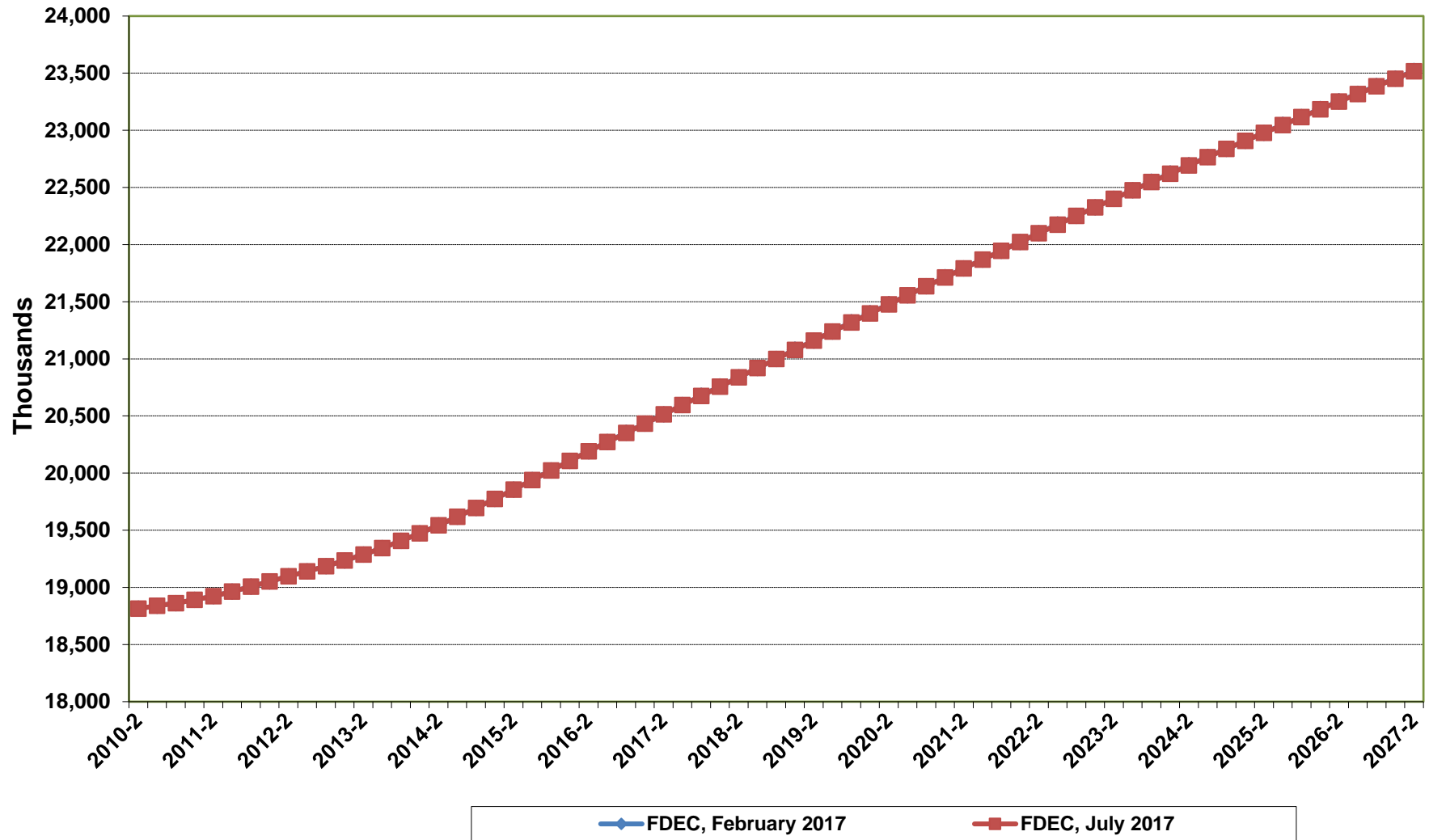
Florida Demographic Estimating Conference

Charts

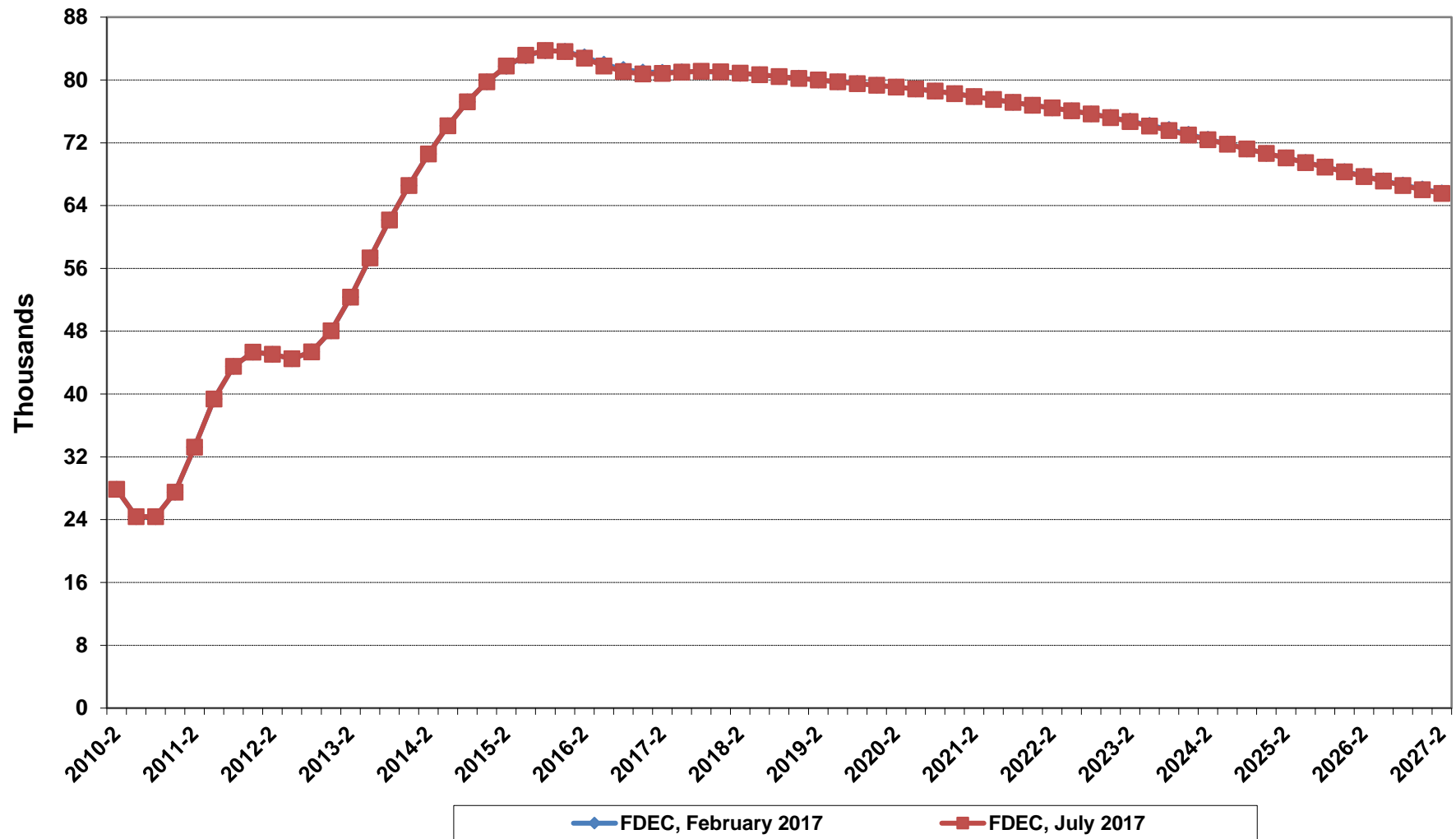
Conference Packet

July 10, 2017

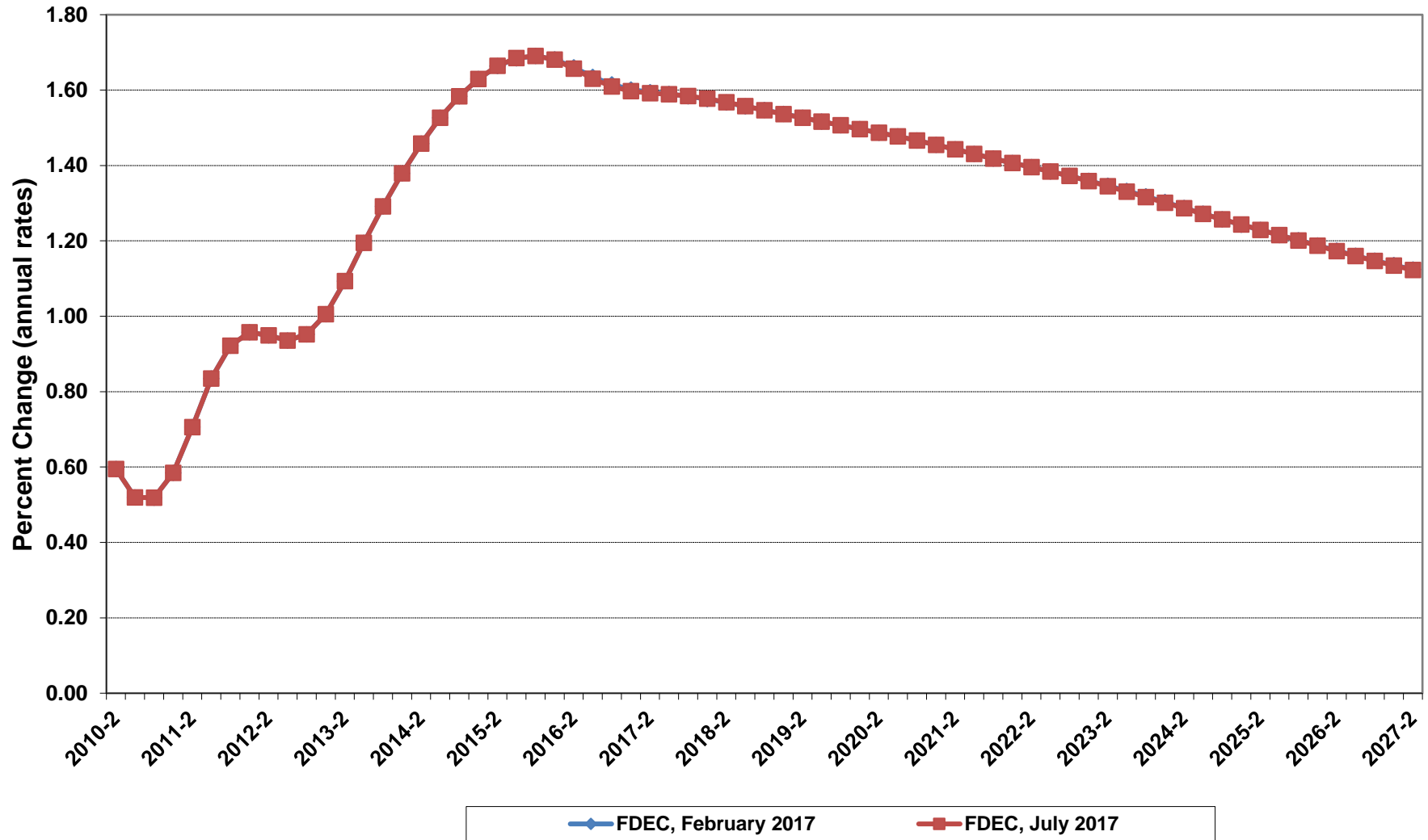
Florida Resident Population



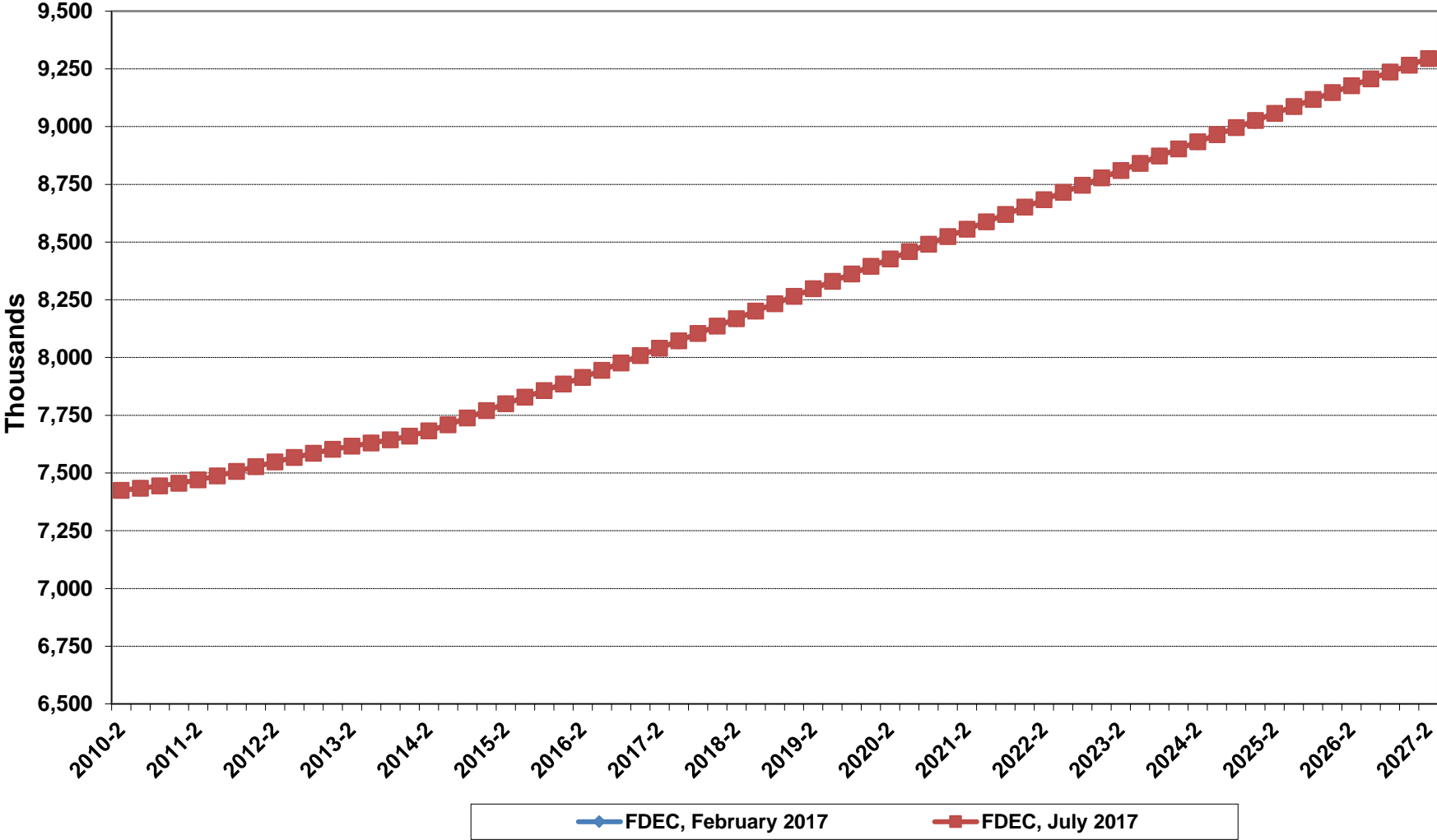
Net Change In Florida Resident Population



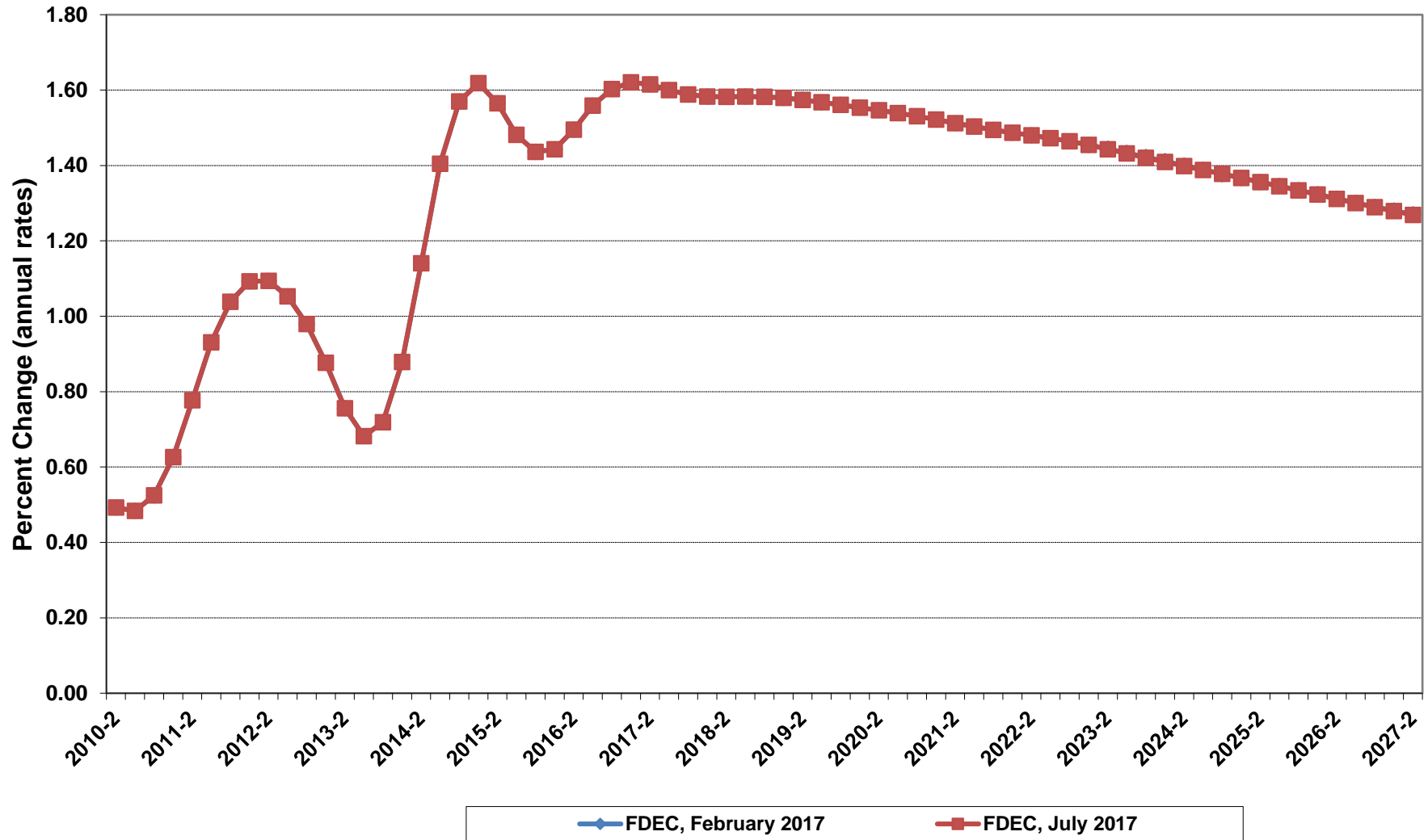
Growth In Florida Resident Population



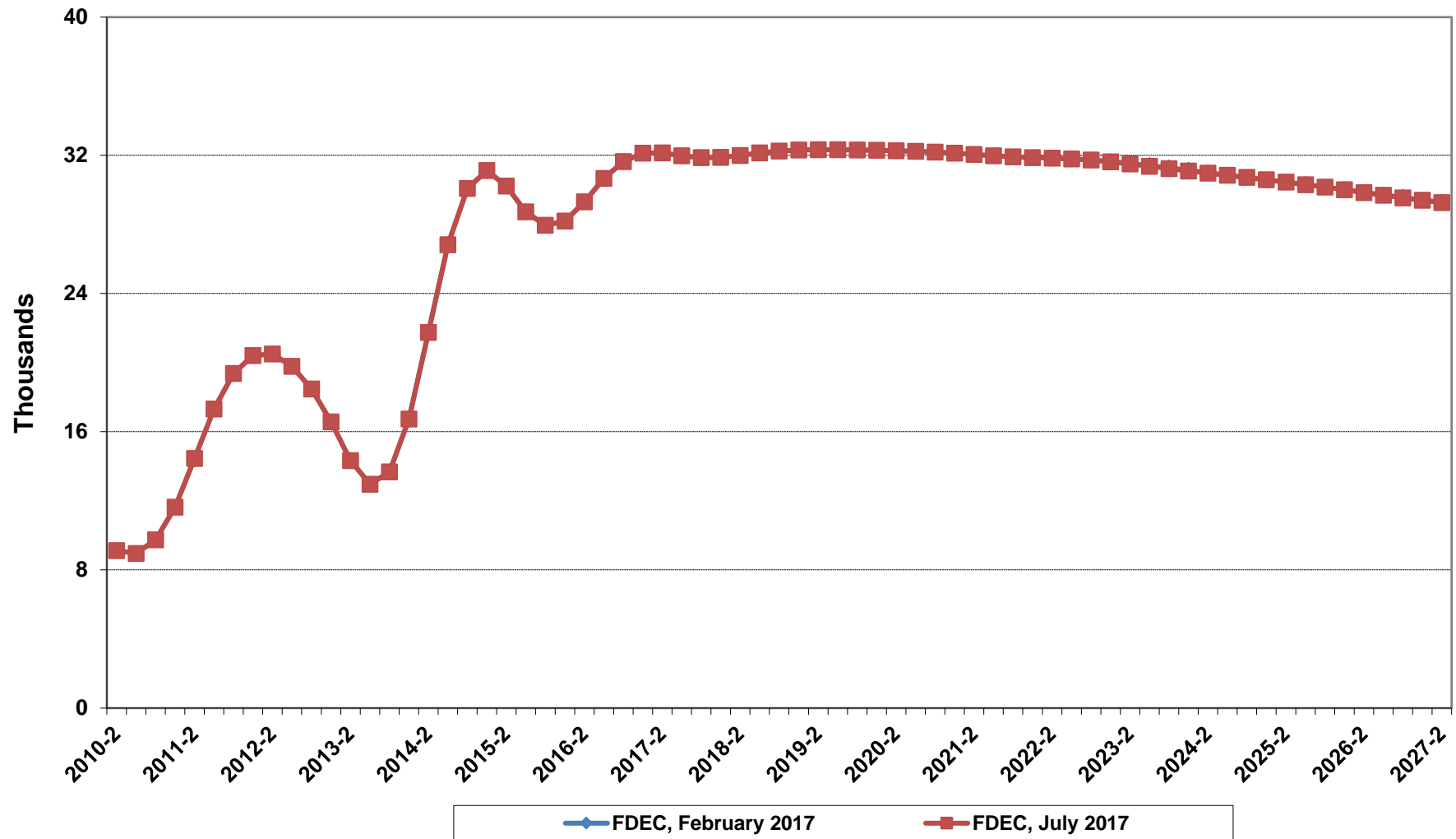
Florida Resident Households



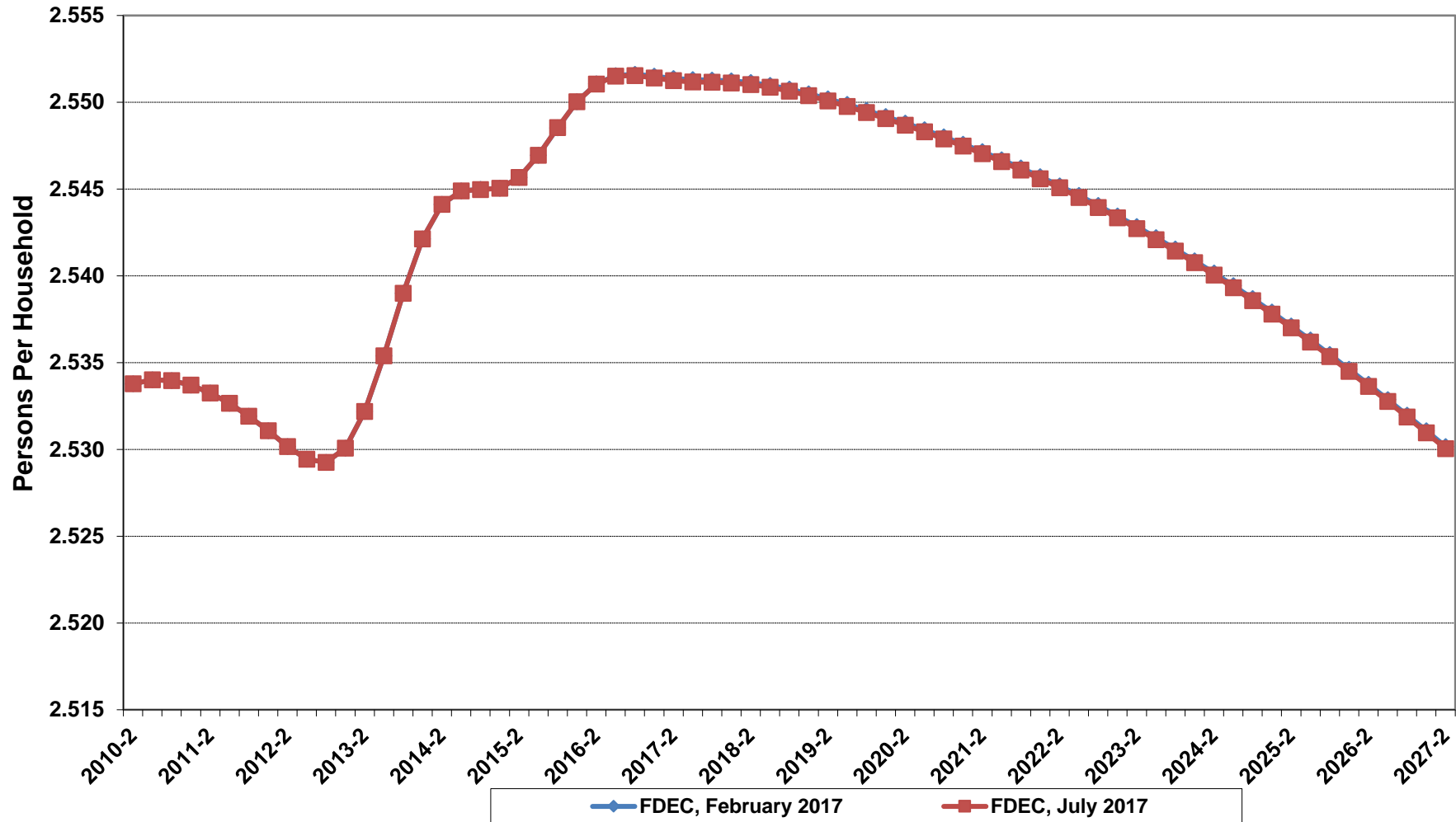
Growth In Florida Resident Households



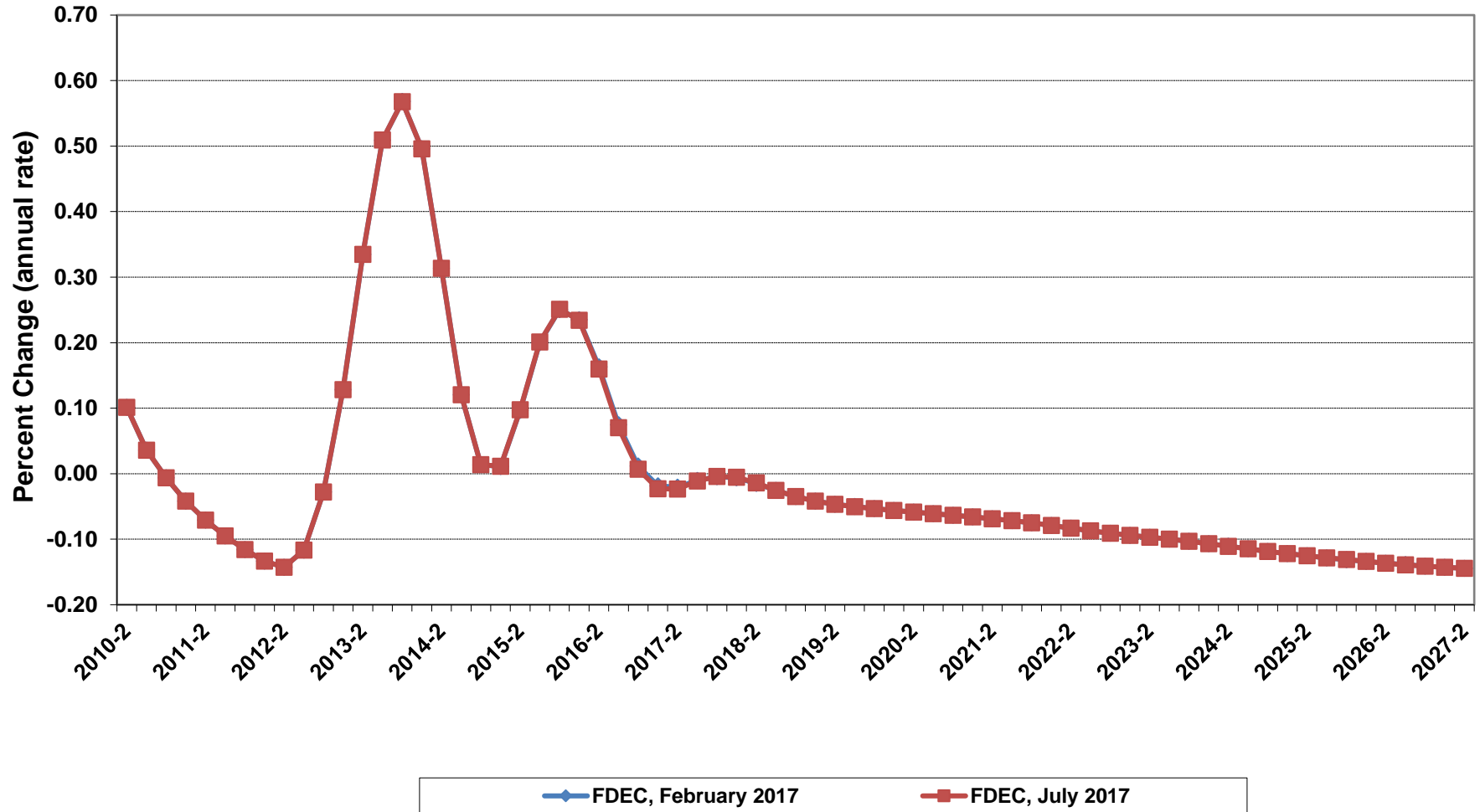
Net Change In Florida Resident Households



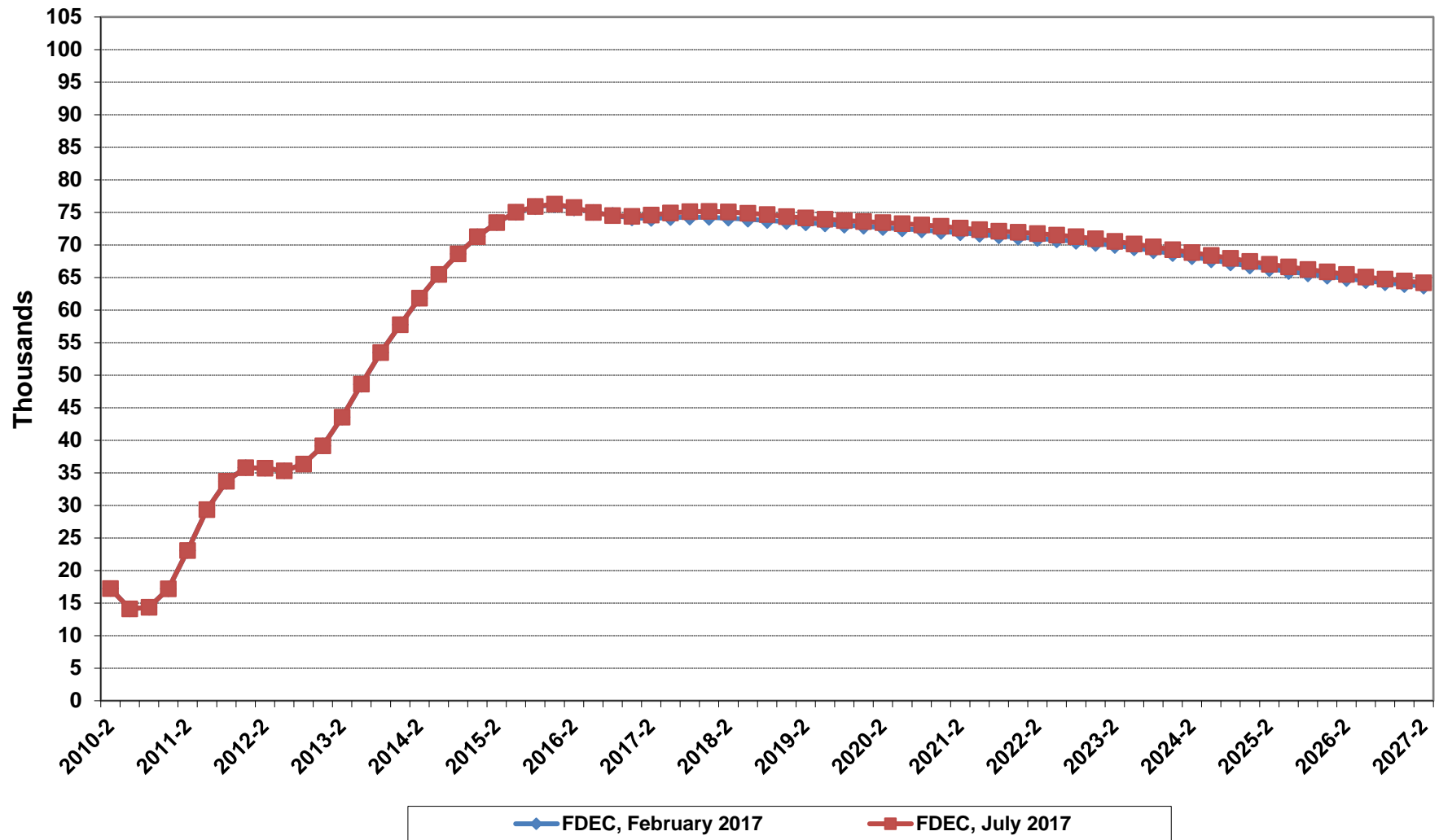
Florida Average Household Size



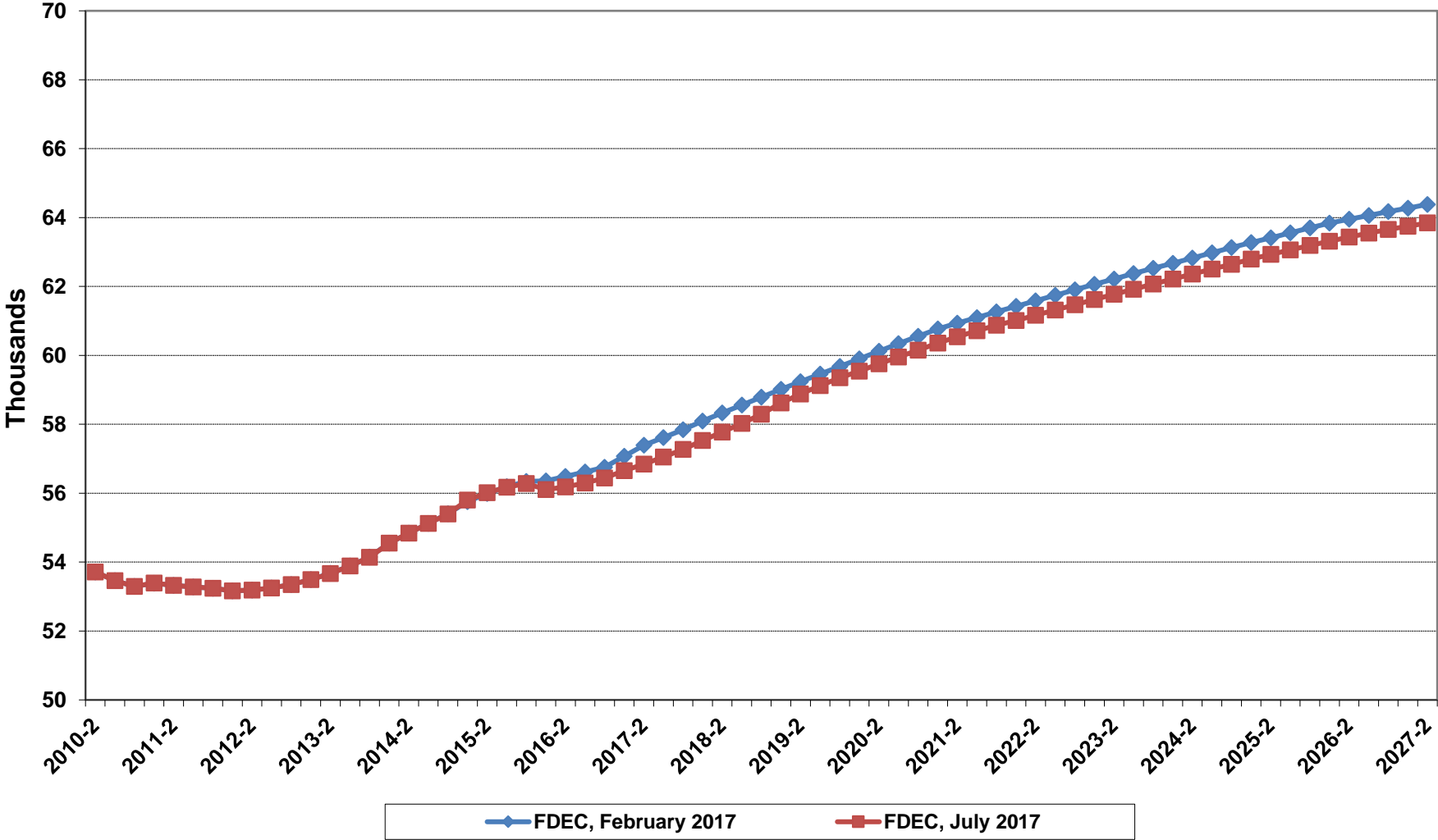
Growth In Florida Household Size



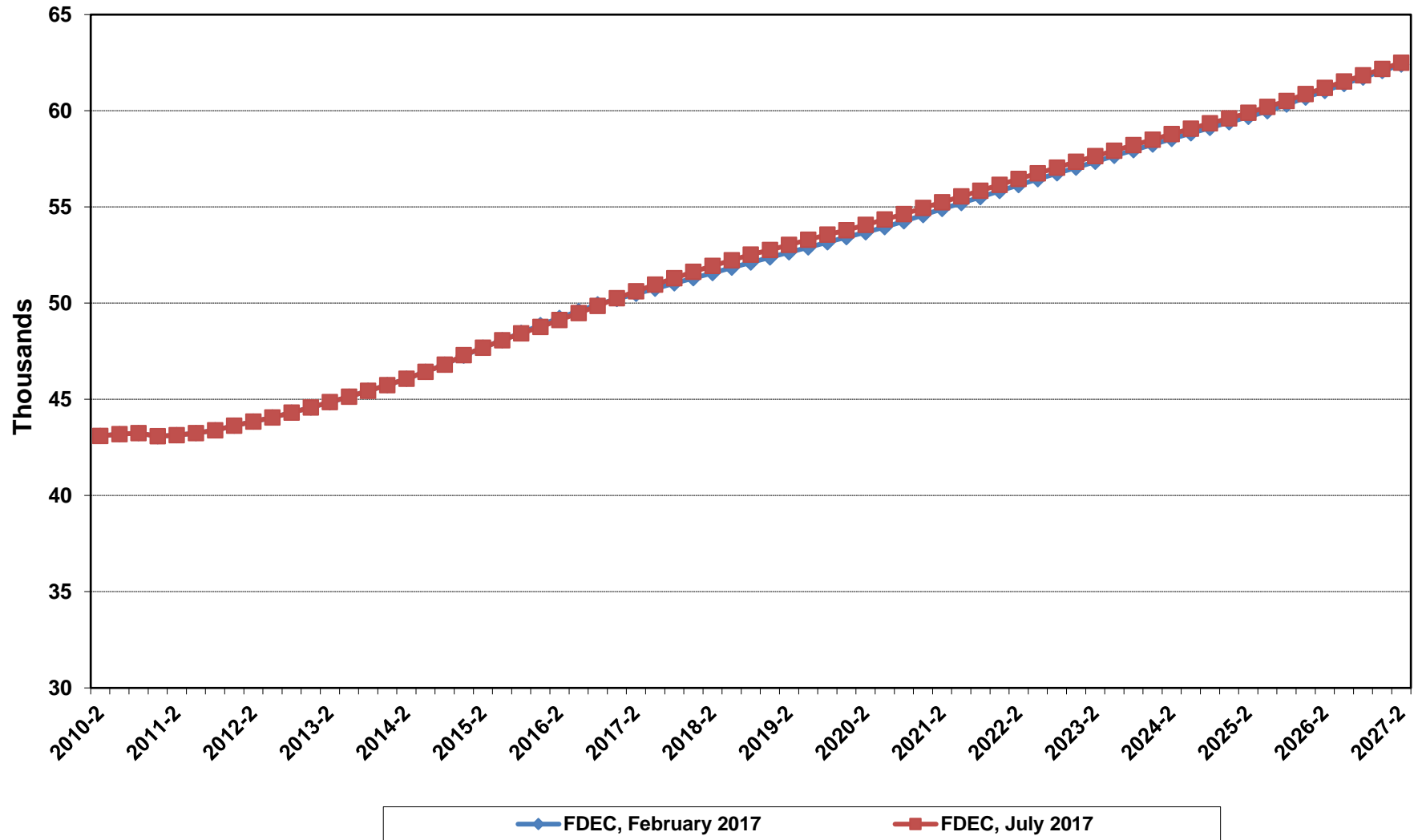
Florida Net Migration



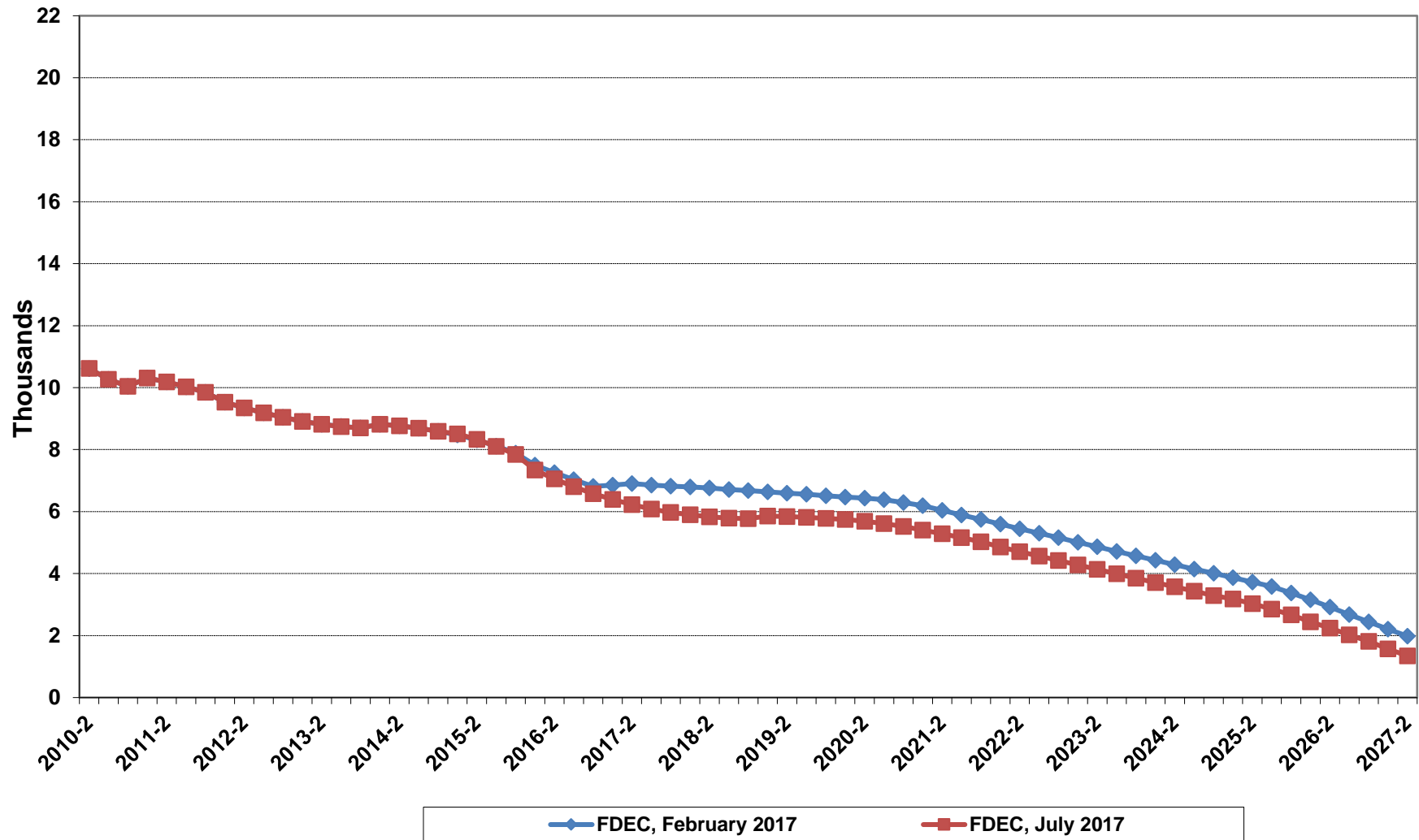
Florida Resident Births



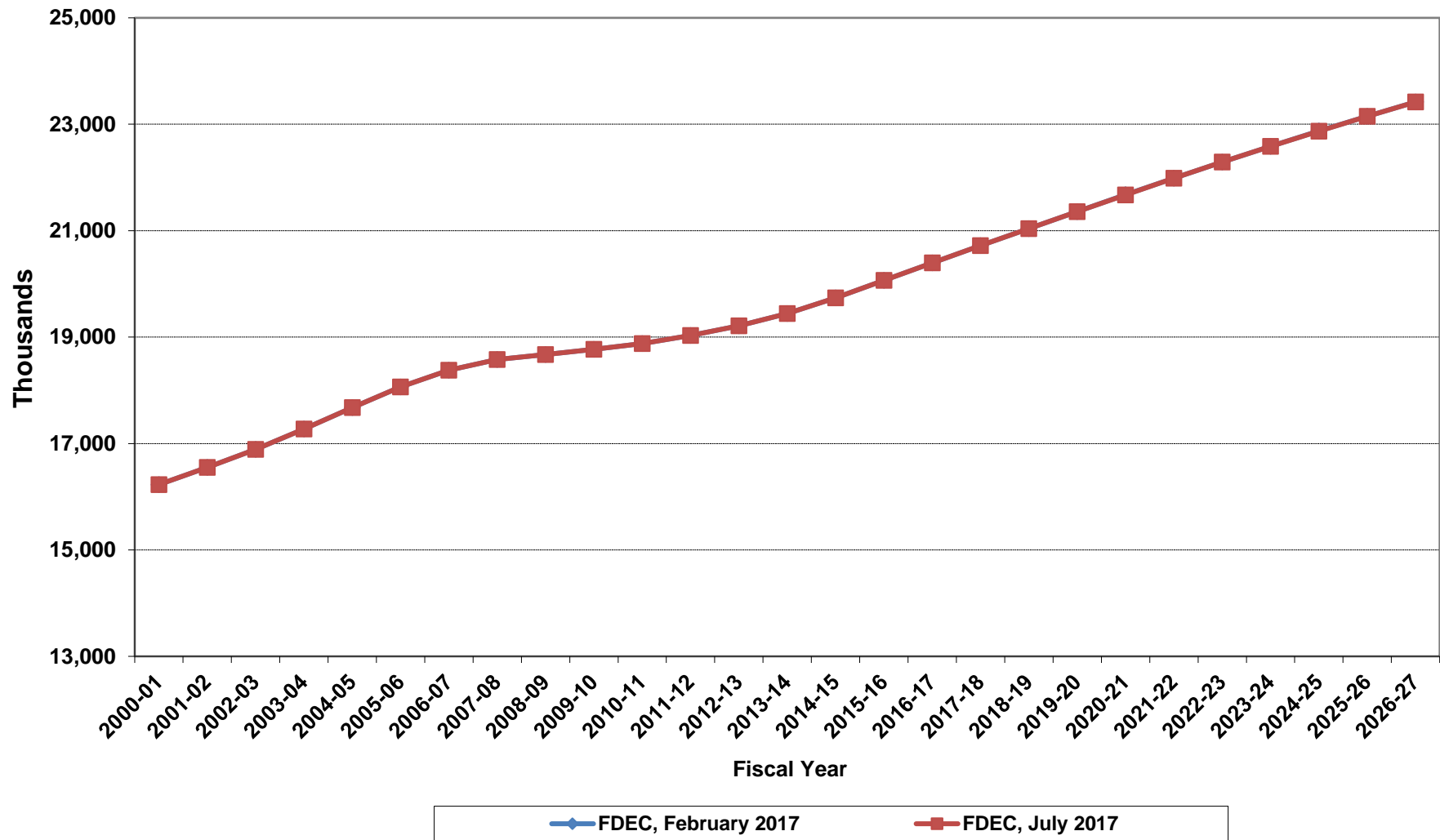
Florida Resident Deaths



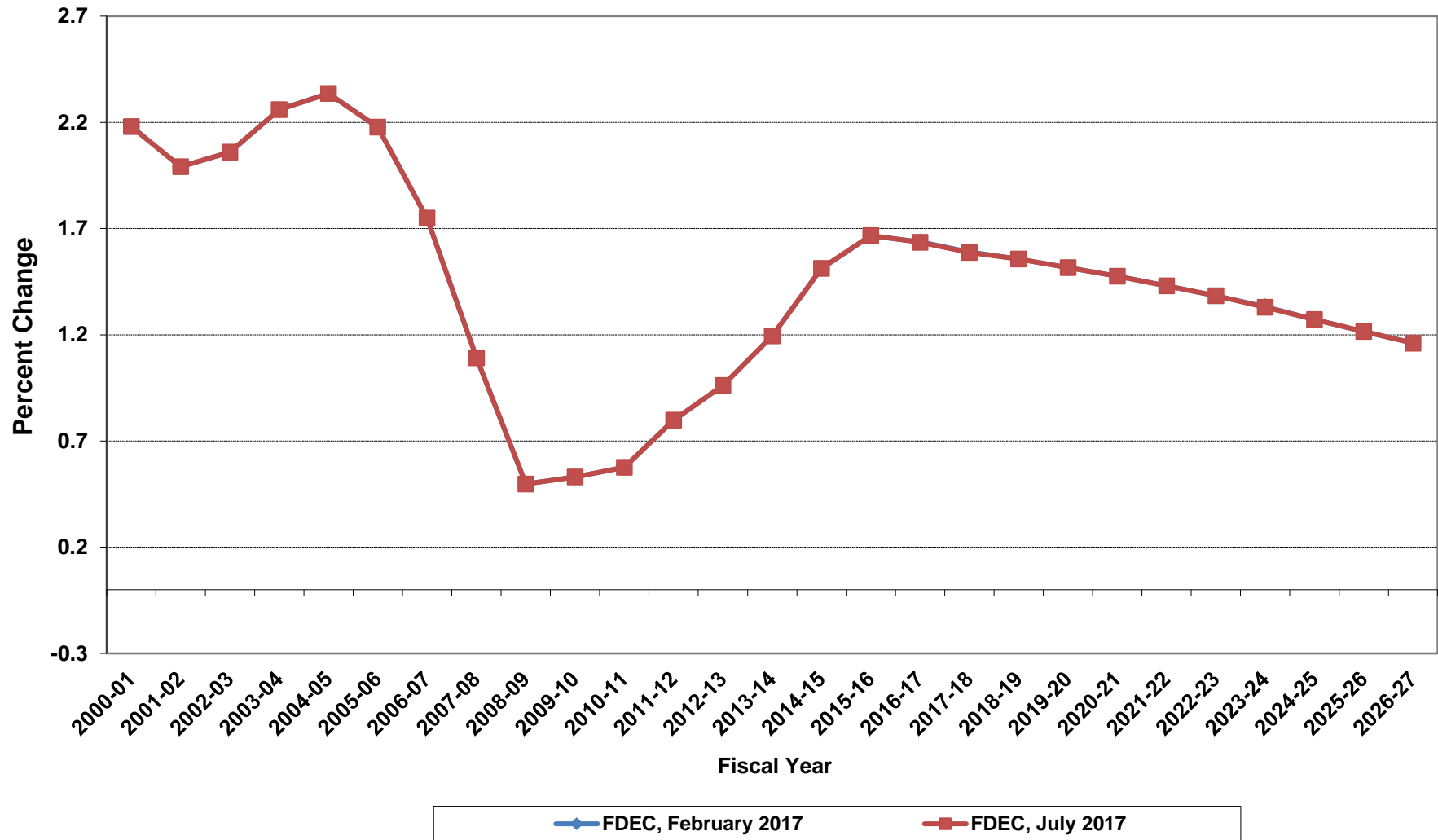
Florida Net Natural Increase



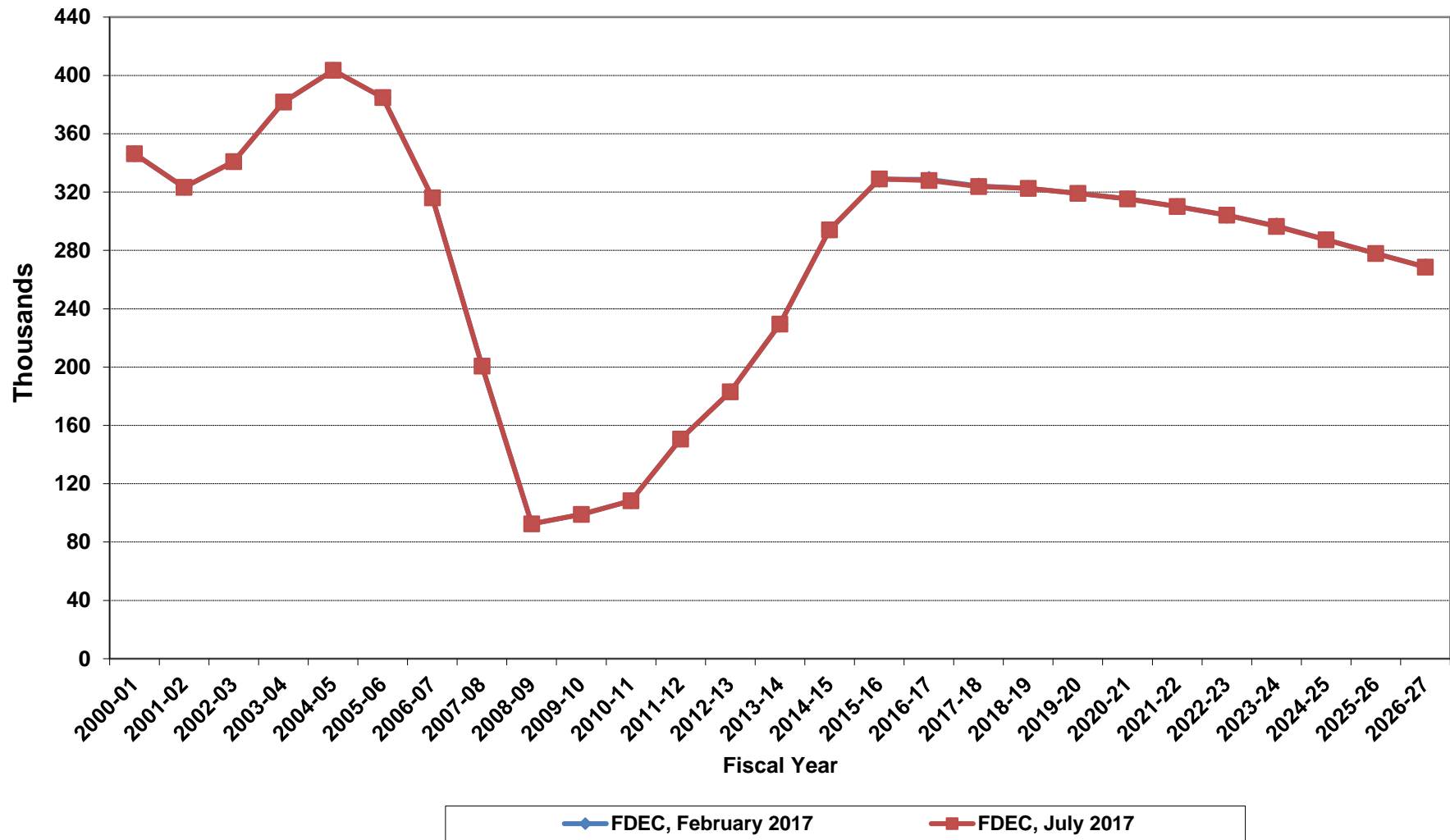
Florida Resident Population



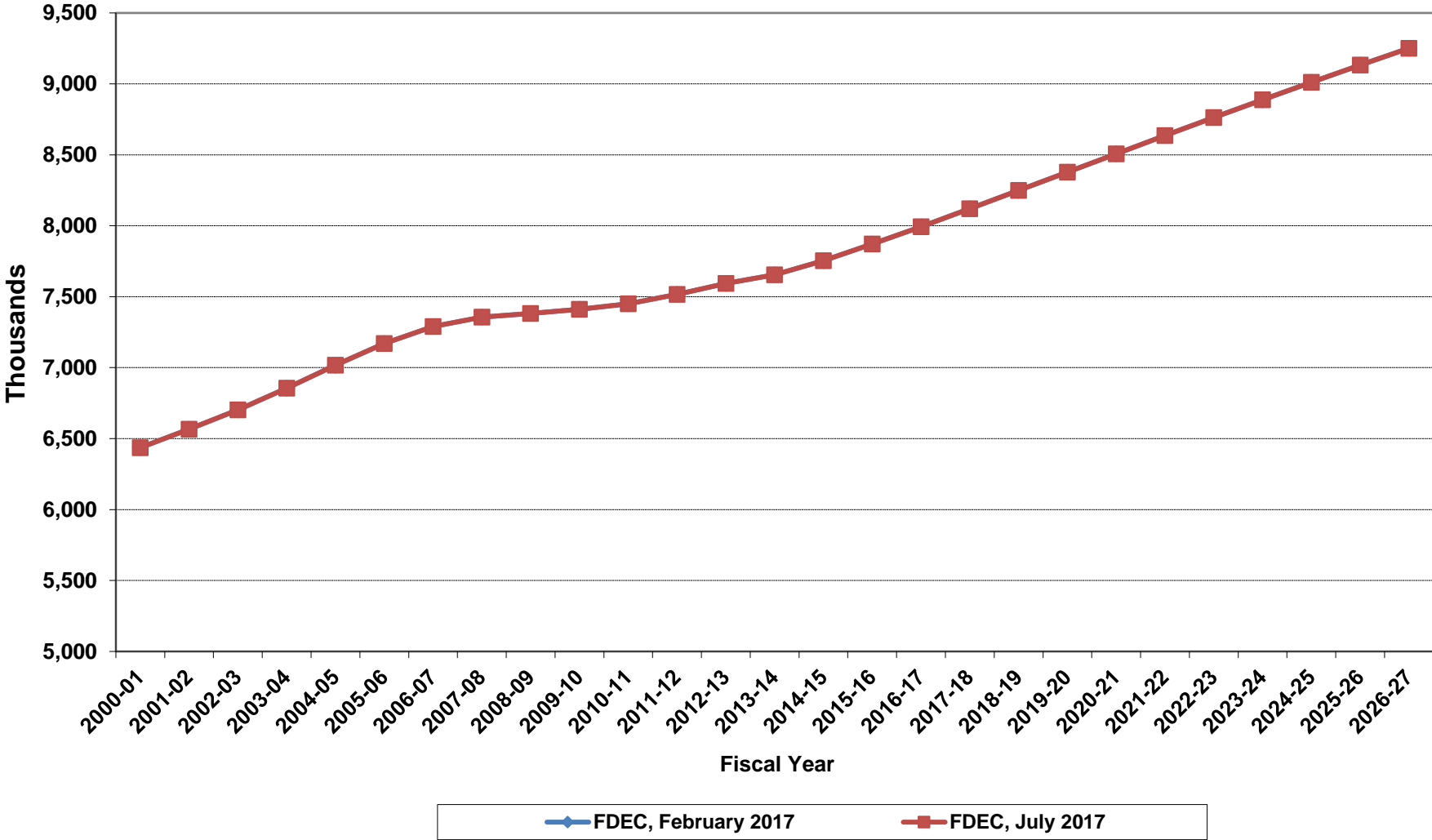
Growth In Florida Resident Population



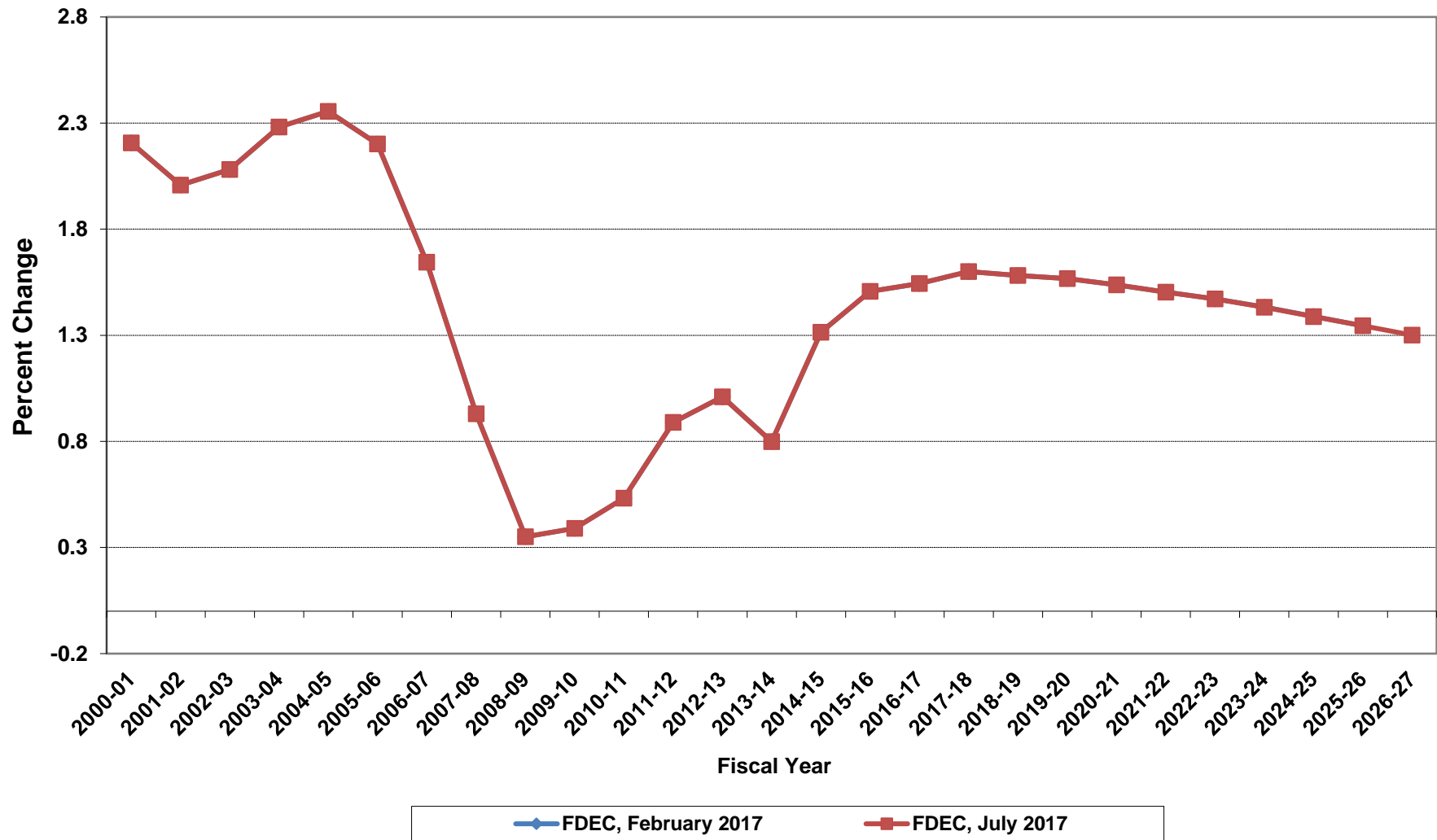
Net Change In Florida Resident Population



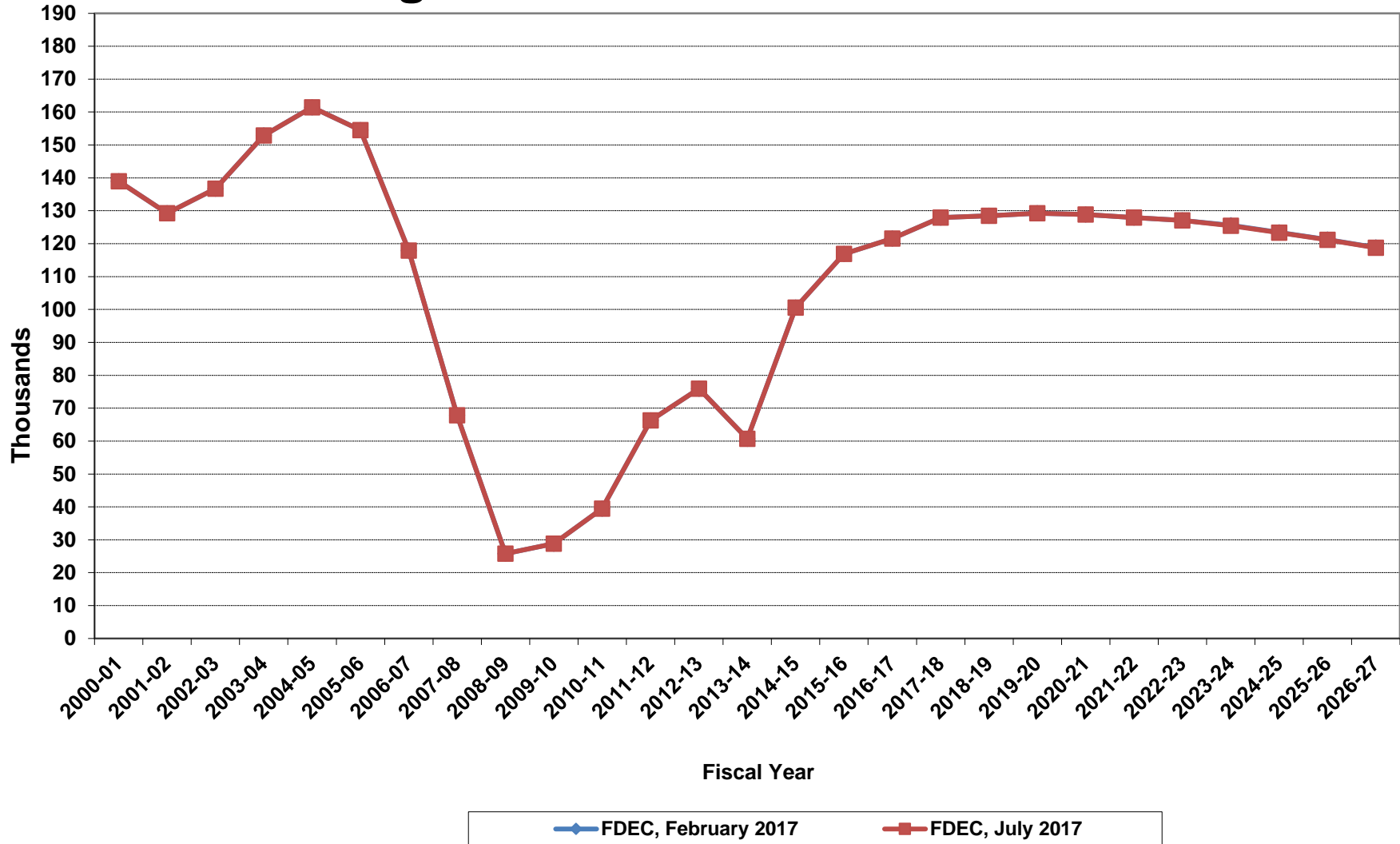
Florida Resident Households



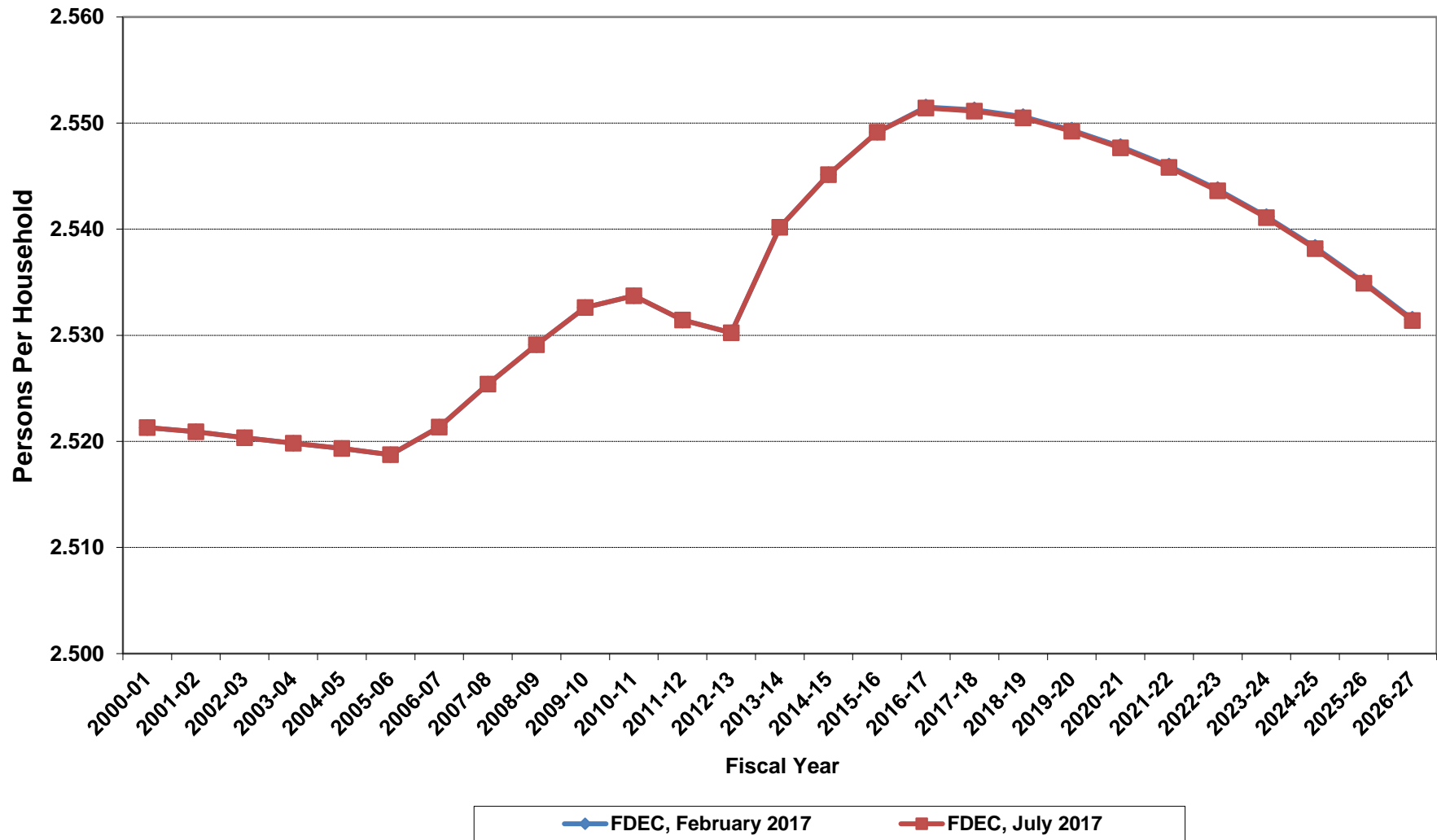
Growth In Florida Resident Households



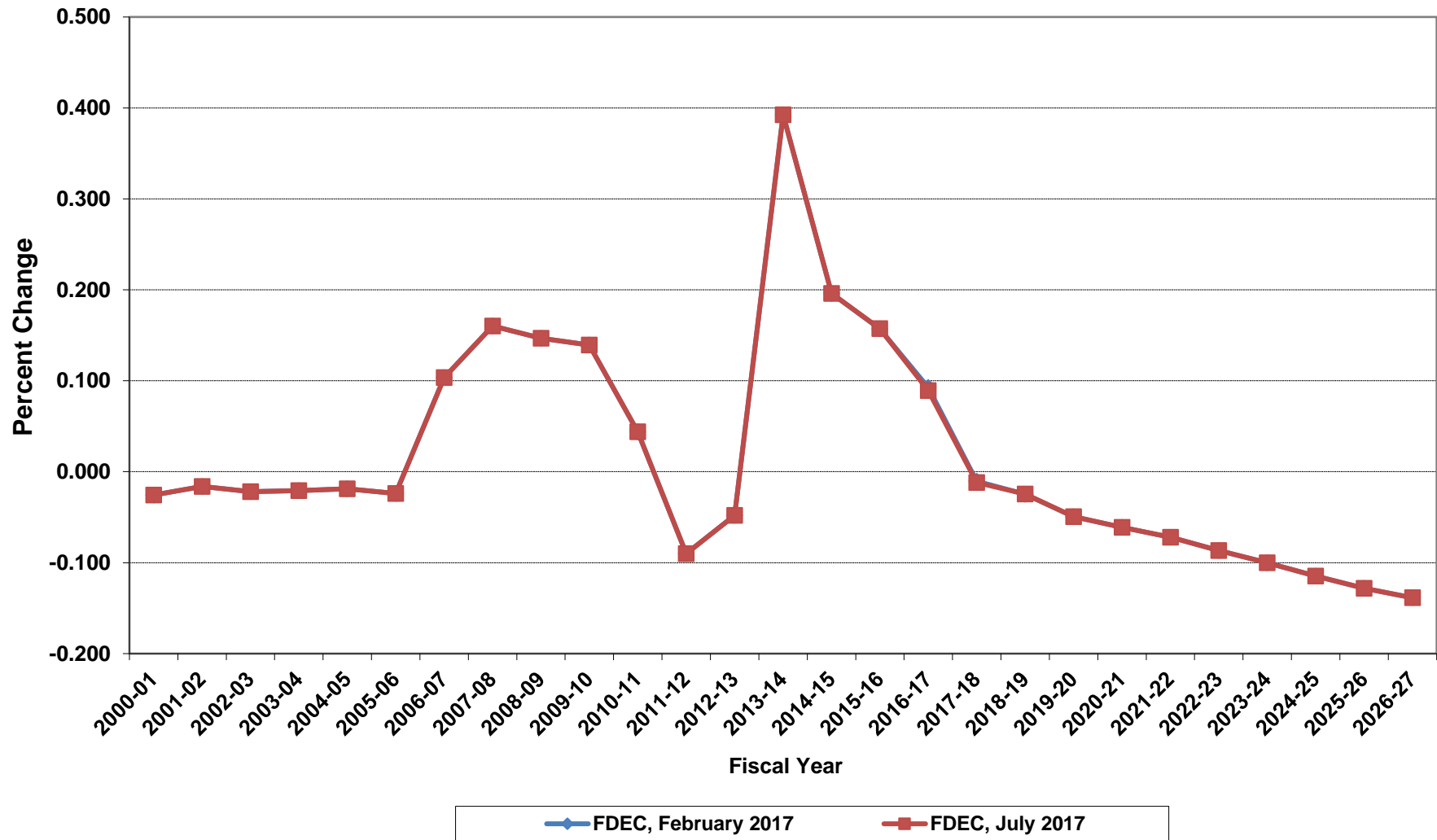
Net Change In Florida Resident Households



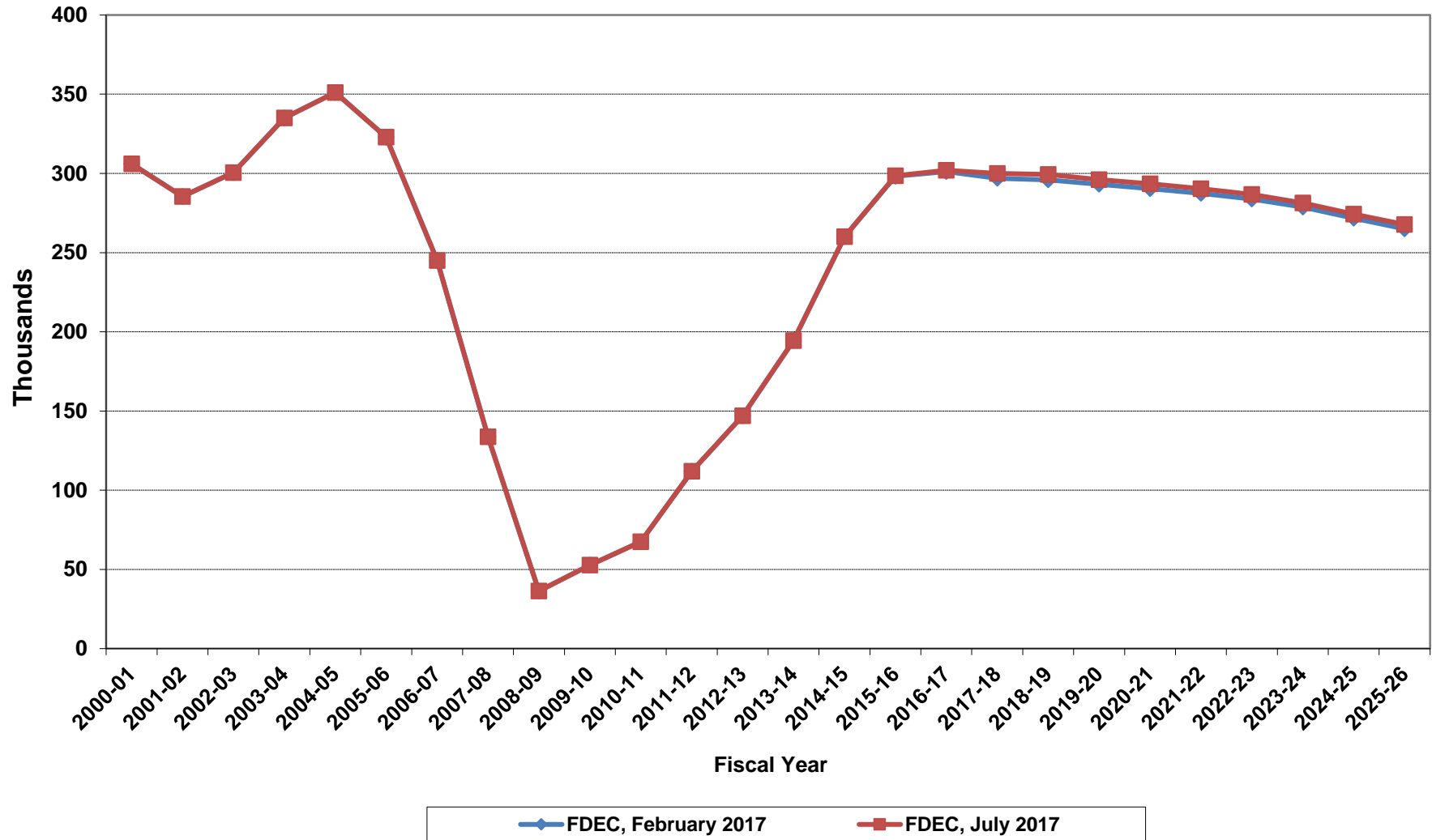
Average Florida Household Size



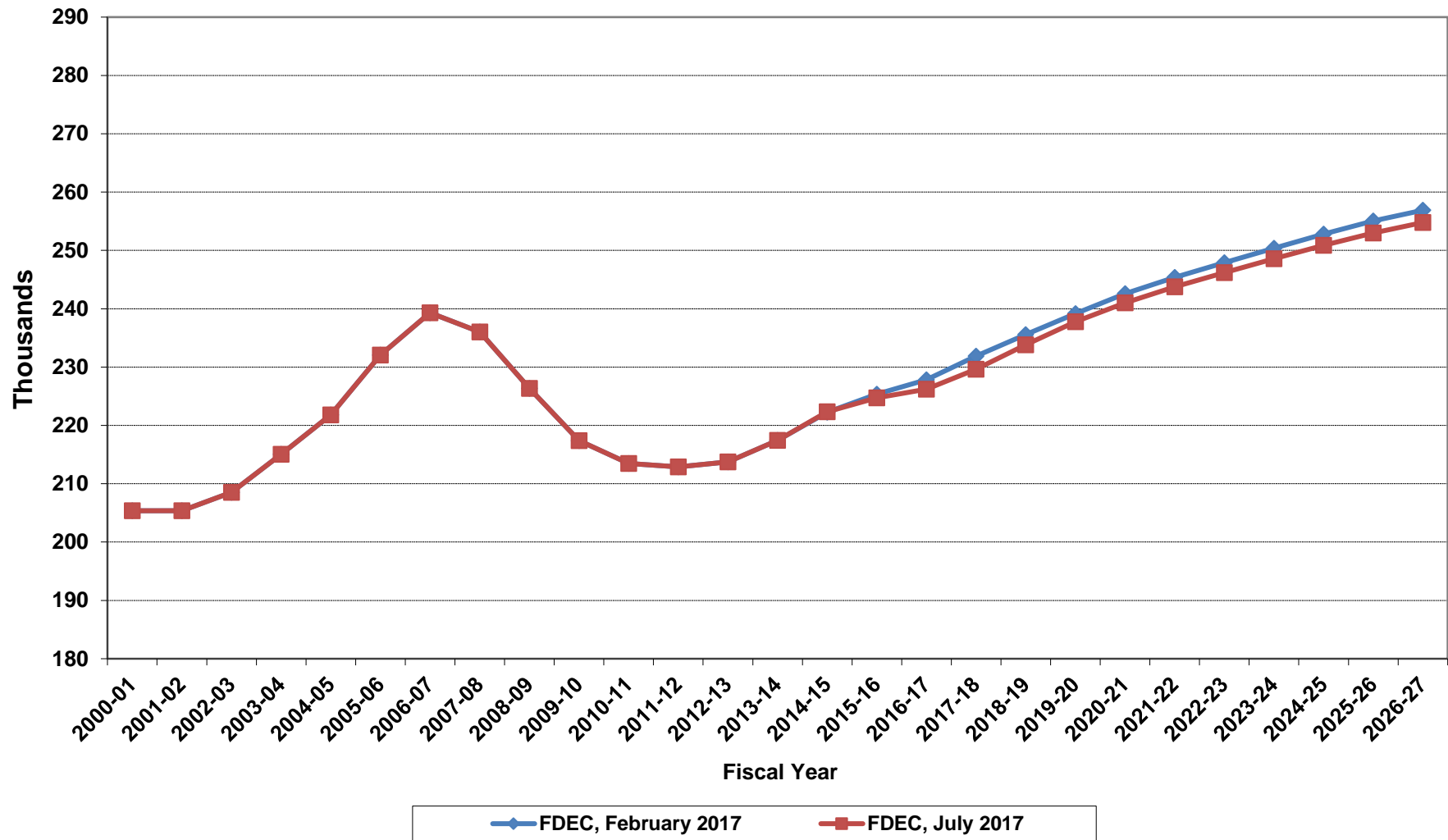
Growth In Average Florida Household Size



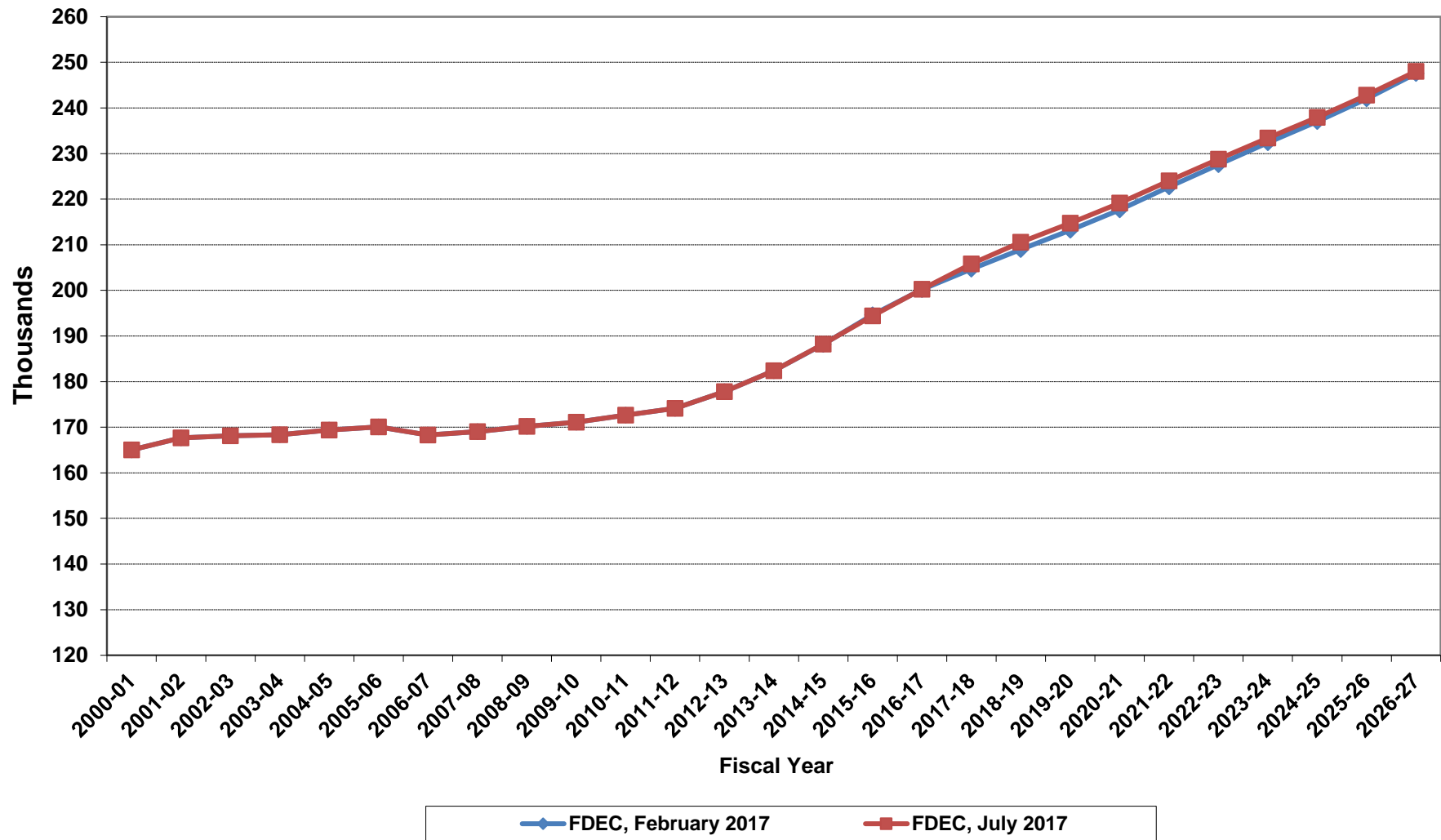
Florida Net Migration



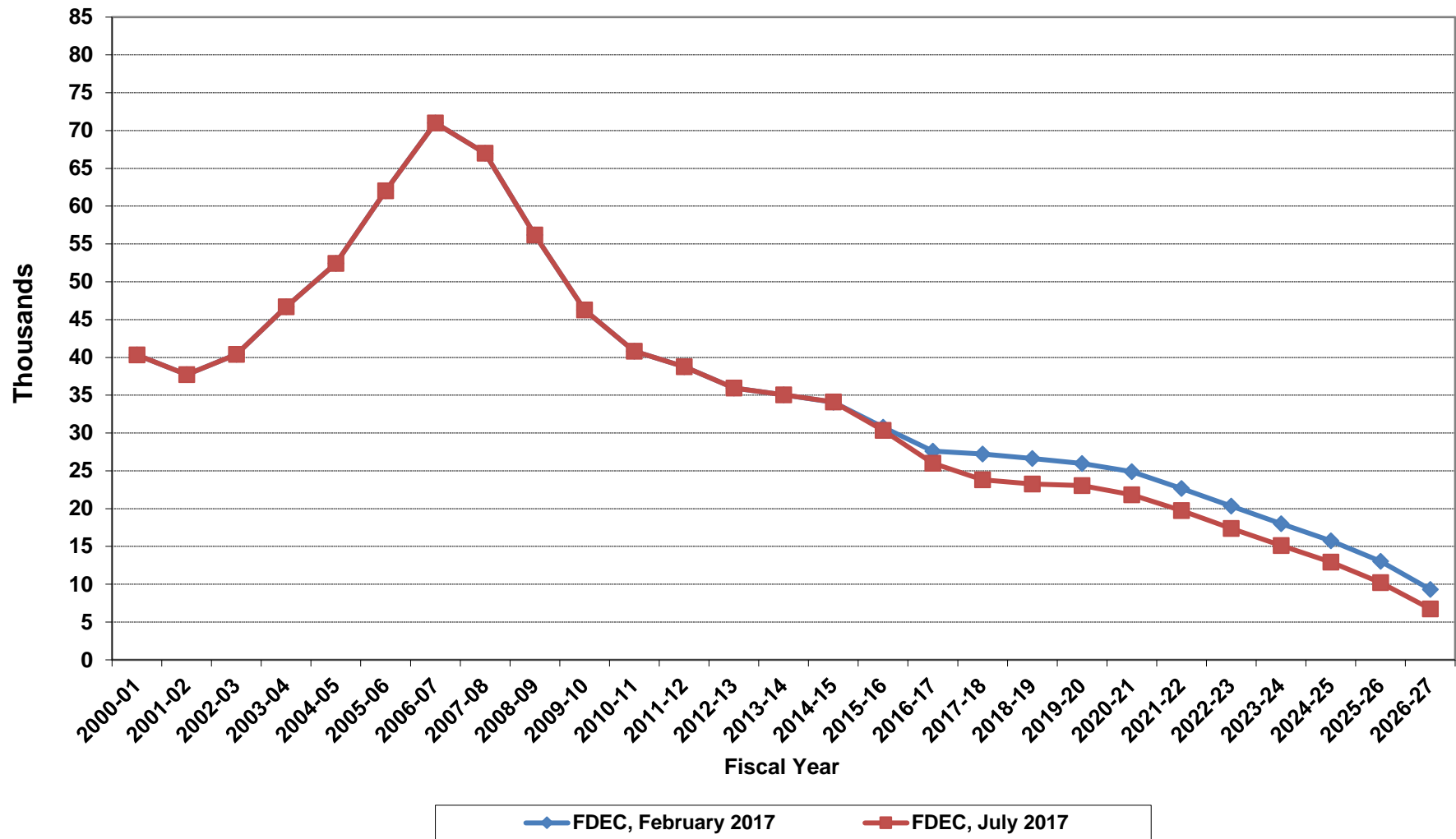
Florida Resident Live Births



Florida Resident Deaths



Florida Net Natural Increase



Florida Population and Components of Change

Fiscal Year	Population (End of Fiscal Year)	Growth Rate	Annual Change in Population	Births	Deaths	Net Natural Increase	Net Migration
1950 - 51	2,981,346	6.50%	181,931	67,486	27,670	39,816	142,115
1951 - 52	3,155,442	5.84%	174,096	72,383	28,942	43,441	130,655
1952 - 53	3,312,521	4.98%	157,079	76,954	29,761	47,193	109,886
1953 - 54	3,504,323	5.79%	191,802	82,725	31,055	51,670	140,132
1954 - 55	3,747,400	6.94%	243,077	86,643	32,176	54,467	188,610
1955 - 56	4,046,062	7.97%	298,662	92,941	34,932	58,009	240,653
1956 - 57	4,370,045	8.01%	323,983	100,990	38,269	62,721	261,262
1957 - 58	4,629,510	5.94%	259,465	105,972	41,911	64,061	195,404
1958 - 59	4,812,270	3.95%	182,760	110,409	43,674	66,735	116,025
1959 - 60	4,998,508	3.87%	186,238	114,428	46,057	68,371	117,867
1960 - 61	5,185,913	3.75%	187,405	116,449	48,388	68,061	119,344
1961 - 62	5,367,899	3.51%	181,986	116,120	50,346	65,774	116,212
1962 - 63	5,553,522	3.46%	185,623	114,709	54,453	60,256	125,367
1963 - 64	5,728,499	3.15%	174,977	115,002	56,229	58,773	116,204
1964 - 65	5,881,195	2.67%	152,696	110,515	57,734	52,781	99,915
1965 - 66	6,065,768	3.14%	184,573	104,367	61,217	43,150	141,423
1966 - 67	6,249,674	3.03%	183,906	101,209	62,577	38,632	145,274
1967 - 68	6,441,756	3.07%	192,082	100,320	66,134	34,186	157,896
1968 - 69	6,633,546	2.98%	191,790	104,286	71,285	33,001	158,789
1969 - 70	6,861,118	3.43%	227,572	111,511	73,831	37,680	189,892
1970 - 71	7,233,583	5.43%	372,465	117,012	75,354	41,658	330,807
1971 - 72	7,681,540	6.19%	447,957	113,568	79,717	33,851	414,106
1972 - 73	8,157,883	6.20%	476,343	107,804	86,232	21,572	454,771
1973 - 74	8,515,208	4.38%	357,325	109,366	88,459	20,907	336,418
1974 - 75	8,648,587	1.57%	133,379	108,686	87,224	21,462	111,917
1975 - 76	8,782,975	1.55%	134,388	104,022	88,129	15,893	118,495
1976 - 77	8,972,678	2.16%	189,703	107,623	90,443	17,180	172,523
1977 - 78	9,225,527	2.82%	252,849	112,268	93,383	18,885	233,964
1978 - 79	9,523,728	3.23%	298,201	116,393	96,801	19,592	278,609
1979 - 80	9,914,652	4.10%	390,924	126,673	101,048	25,625	365,299
1980 - 81	10,212,969	3.01%	298,317	135,560	107,562	27,998	270,319
1981 - 82	10,492,851	2.74%	279,882	141,593	108,644	32,949	246,933
1982 - 83	10,748,466	2.44%	255,615	146,853	110,497	36,356	219,259
1983 - 84	11,065,911	2.95%	317,445	151,748	113,939	37,809	279,636
1984 - 85	11,405,533	3.07%	339,622	159,819	117,539	42,280	297,342
1985 - 86	11,740,069	2.93%	334,536	165,857	122,453	43,404	291,132
1986 - 87	12,083,241	2.92%	343,172	170,819	124,946	45,873	297,299
1987 - 88	12,410,339	2.71%	327,098	179,541	129,413	50,128	276,970
1988 - 89	12,723,719	2.53%	313,380	188,390	131,992	56,398	256,982
1989 - 90	13,017,296	2.31%	293,577	197,181	132,503	64,678	228,899
1990 - 91	13,326,892	2.38%	309,596	197,180	134,093	63,087	246,509
1991 - 92	13,552,021	1.69%	225,129	191,810	136,280	55,530	169,599
1992 - 93	13,802,571	1.85%	250,550	192,051	142,087	49,964	200,586
1993 - 94	14,120,323	2.30%	317,752	191,840	146,101	45,739	272,013
1994 - 95	14,406,418	2.03%	286,095	189,292	149,161	40,131	245,964
1995 - 96	14,701,040	2.05%	294,622	188,584	152,570	36,014	258,608
1996 - 97	15,012,615	2.12%	311,575	190,587	153,067	37,520	274,055
1997 - 98	15,310,069	1.98%	297,454	194,242	155,080	39,162	258,292
1998 - 99	15,680,164	2.42%	370,095	195,897	159,988	35,909	334,186
1999 - 00	16,069,889	2.49%	389,725	200,302	162,489	37,813	351,912
2000 - 01	16,385,615	1.96%	315,726	205,798	164,919	40,879	274,847
2001 - 02	16,718,076	2.03%	332,461	205,164	167,812	37,352	295,109
2002 - 03	17,074,258	2.13%	356,182	208,403	168,079	40,324	315,858
2003 - 04	17,475,944	2.35%	401,686	215,298	168,302	46,996	354,690
2004 - 05	17,876,215	2.29%	400,271	221,533	169,302	52,231	348,040
2005 - 06	18,236,885	2.02%	360,670	232,019	170,303	61,716	298,954
2006 - 07	18,501,231	1.45%	264,346	239,635	168,117	71,518	192,828
2007 - 08	18,636,837	0.73%	135,606	236,065	168,966	67,099	68,507
2008 - 09	18,711,844	0.40%	75,007	226,337	170,615	55,722	19,285
2009 - 10	18,826,491	0.61%	114,647	217,411	171,118	46,293	68,354

Florida Population and Components of Change

Fiscal Year	Population (End of Fiscal Year)	Growth Rate	Annual Change in Population	Births	Deaths	Net Natural Increase	Net Migration
2010 - 11	18,941,742	0.61%	115,251	213,467	172,662	40,805	74,446
2011 - 12	19,118,937	0.94%	177,195	212,878	174,122	38,756	138,439
2012 - 13	19,314,400	1.02%	195,463	213,761	177,806	35,955	159,508
2013 - 14	19,579,858	1.37%	265,458	217,415	182,384	35,031	230,427
2014 - 15	19,897,813	1.62%	317,955	222,337	188,218	34,119	283,836
2015 - 16	20,230,889	1.67%	333,076	224,743	194,396	30,347	302,729
2016 - 17	20,554,689	1.60%	323,800	226,232	200,227	26,005	297,795
2017 - 18	20,878,632	1.58%	323,943	229,626	205,830	23,796	300,147
2018 - 19	21,199,448	1.54%	320,816	233,814	210,560	23,254	297,562
2019 - 20	21,516,749	1.50%	317,301	237,767	214,736	23,031	294,270
2020 - 21	21,829,702	1.45%	312,953	241,003	219,181	21,822	291,131
2021 - 22	22,136,868	1.41%	307,166	243,761	224,006	19,755	287,411
2022 - 23	22,437,587	1.36%	300,719	246,182	228,787	17,395	283,324
2023 - 24	22,729,529	1.30%	291,942	248,560	233,437	15,123	276,819
2024 - 25	23,012,098	1.24%	282,569	250,865	237,934	12,931	269,638
2025 - 26	23,285,279	1.19%	273,181	252,998	242,787	10,211	262,970
2026 - 27	23,549,478	1.13%	264,199	254,786	248,038	6,748	257,451
2027 - 28	23,806,351	1.09%	256,873	256,342	253,104	3,238	253,635
2028 - 29	24,056,773	1.05%	250,422	257,832	257,918	-86	250,508
2029 - 30	24,301,373	1.02%	244,600	259,253	262,579	-3,326	247,926
2030 - 31	24,540,817	0.99%	239,444	260,637	267,449	-6,812	246,256
2031 - 32	24,774,607	0.95%	233,790	262,023	272,585	-10,562	244,352
2032 - 33	25,002,553	0.92%	227,946	263,381	277,644	-14,263	242,209
2033 - 34	25,225,317	0.89%	222,764	264,674	282,570	-17,896	240,660
2034 - 35	25,443,225	0.86%	217,908	265,903	287,384	-21,481	239,389
2035 - 36	25,656,198	0.84%	212,973	267,166	292,140	-24,974	237,947
2036 - 37	25,863,620	0.81%	207,422	268,654	296,852	-28,198	235,620
2037 - 38	26,066,833	0.79%	203,213	270,249	301,474	-31,225	234,438
2038 - 39	26,266,515	0.77%	199,682	271,777	306,001	-34,224	233,906