



Maria J. Moncada
Senior Attorney
Florida Power & Light Company
700 Universe Boulevard
Juno Beach, FL 33408-0420
(561) 304-5795
(561) 691-7135 (Facsimile)
E-mail: maria.moncada@fpl.com

August 24, 2018

-VIA ELECTRONIC FILING -

Ms. Carlotta S. Stauffer
Commission Clerk
Florida Public Service Commission
2540 Shumard Oak Blvd.
Tallahassee, FL 32399-0850

Re: Docket No. 20180001-EI

Dear Ms. Stauffer:

I attach for electronic filing in the above docket (i) Florida Power & Light Company's Petition for Approval of its Generating Performance Incentive Factor Targets for January 2019 through December 2019 and (ii) the prepared testimony and exhibit of FPL witness Charles R. Rote.

If there are any questions regarding this transmittal, please contact me at (561) 304-5795.

Sincerely,

s/ Maria J. Moncada
Maria J. Moncada

Attachments

cc: Counsel for Parties of Record (w/attachments)

BEFORE THE FLORIDA PUBLIC SERVICE COMMISSION

In re: Fuel and Purchase Power Cost Recovery
Clause with Generating Performance Incentive
Factor

Docket No: 20180001-EI

Filed: August 24, 2018

**PETITION OF FLORIDA POWER & LIGHT COMPANY FOR
APPROVAL OF ITS GENERATING PERFORMANCE INCENTIVE
FACTOR (GPIF) TARGETS FOR JANUARY 2019 THROUGH DECEMBER 2019**

Florida Power & Light Company (“FPL”), pursuant to Order No. 9273 in Docket No. 74680-CI, Order No. 10093 in Docket No. 810001-EU, and Commission Directives of April 24 and April 30, 1980, hereby petitions the Commission to approve the proposed Generation Performance Incentive Factor (“GPIF”) targets for the period January 2019 through December 2019 of 87.2% for the weighted system average equivalent availability and 7,306 Btu/kWh for the average net operating heat rate. In support, FPL states:

1. The GPIF targets for the period January 2019 through December 2019 are calculated in accordance with the methodology contained in the Generating Performance Incentive Factor Implementation Manual adopted by Order No. 10168 in Docket No. 810001-EU, as revised by Order No. 10912 in Docket No. 820001-EU. The 2019 GPIF targets are presented in Mr. Rote’s Exhibit CRR-2.

2. Details regarding calculation of the GPIF targets are reflected in the prepared written testimony and exhibits of FPL witness Charles R. Rote, which are incorporated herein by reference.

WHEREFORE, FPL respectfully requests this Commission to approve the proposed GPIF targets for the period January 2019 through December 2019 of 87.2% for the weighted

system average equivalent availability and 7,306 Btu/kWh for the average net operating heat rate.

Respectfully submitted,

R. Wade Litchfield, Esq.
Vice President and General Counsel
Maria J. Moncada
Senior Attorney
Florida Power & Light Company
700 Universe Boulevard
Juno Beach, Florida 33408-0420
Telephone: (561) 304-5795
Fax: (561) 691-7135

By: s/ Maria J. Moncada
Maria J. Moncada
Florida Bar No. 0773301

CERTIFICATE OF SERVICE
Docket No. 20180001-EI

I **HEREBY CERTIFY** that a true and correct copy of the foregoing has been furnished
by electronic service on this 24th day of August 2018 to the following:

Suzanne Brownless, Esq.
Danijela Janjic, Esq.
Division of Legal Services
Florida Public Service Commission
2540 Shumard Oak Blvd.
Tallahassee, Florida 32399-0850
sbrownle@psc.state.fl.us
djanjic@psc.state.fl.us

Andrew Maurey
Michael Barrett
Division of Accounting and Finance
Florida Public Service Commission
2540 Shumard Oak Blvd.
Tallahassee, Florida 32399-0850
amaurey@psc.state.fl.us
mbarrett@psc.state.fl.us

J.R. Kelly, Esq.
Patricia Christensen, Esq.
Charles Rehwinkel, Esq.
Erik L. Sayler, Esq.
Office of Public Counsel
c/o The Florida Legislature
111 West Madison Street, Room 812
Tallahassee, Florida 32399
kelly.jr@leg.state.fl.us
christensen.patty@leg.state.fl.us
rehwinkel.charles@leg.state.fl.us
sayler.erik@leg.state.fl.us

Matthew R. Bernier, Esq.
106 East College Avenue, Suite 800
Tallahassee, Florida 32301
matthew.bernier@duke-energy.com

Dianne M. Triplett, Esq.
299 First Avenue North
St. Petersburg, Florida 33701
dianne.triplett@duke-energy.com
Attorneys for Duke Energy Florida

Paula K. Brown, Manager
Tampa Electric Company
Regulatory Coordinator
Post Office Box 111
Tampa, Florida 33601-0111
regdept@tecoenergy.com

Jeffrey A. Stone
Rhonda J. Alexander
Gulf Power Company
One Energy Place
Pensacola, Florida 32520-0780
jastone@southernco.com
rjalexad@southernco.com

James D. Beasley, Esq.
J. Jeffrey Wahlen, Esq.
Ausley & McMullen
P.O. Box 391
Tallahassee, Florida 32302
jbeasley@ausley.com
jwahlen@ausley.com
Attorneys for Tampa Electric Company

Russell A. Badders, Esq.
Steven R. Griffin, Esq.
Beggs & Lane
P.O. Box 12950
Pensacola, Florida 32591-2950
rab@beggslane.com
srg@beggslane.com
Attorneys for Gulf Power Company

Mike Cassel
Director, Regulatory and Governmental
Affairs
Florida Public Utilities Company
1750 S.W. 14th Street, Suite 200
Fernandina Beach, Florida 32034
mcassel@fpuc.com

Beth Keating, Esq.
Gunster Law Firm
215 South Monroe St., Suite 601
Tallahassee, Florida 32301-1804
bkeating@gunster.com
**Attorneys for Florida
Public Utilities Company**

Robert Scheffel Wright, Esq.
John T. LaVia, III, Esq.
Gardner, Bist, Wiener, et al
1300 Thomaswood Drive
Tallahassee, Florida 32308
schef@gbwlegal.com
jlavia@gbwlegal.com
Attorneys for Florida Retail Federation

James W. Brew, Esq.
Laura A. Wynn, Esq.
Stone Mattheis Xenopoulos & Brew, PC
1025 Thomas Jefferson Street, NW
Eighth Floor, West Tower
Washington, DC 20007-5201
jbrew@smxblaw.com
law@smxblaw.com
**Attorneys for PCS Phosphate -
White Springs**

Jon C. Moyle, Esq.
Moyle Law Firm, P.A.
118 N. Gadsden St.
Tallahassee, Florida 32301
jmoyle@moylelaw.com
**Attorneys for Florida Industrial Power
Users Group**

By: s/ Maria J. Moncada
Maria J. Moncada
Florida Bar No. 0773301

1 **BEFORE THE FLORIDA PUBLIC SERVICE COMMISSION**

2 **FLORIDA POWER & LIGHT COMPANY**

3 **TESTIMONY OF CHARLES R. ROTE**

4 **DOCKET NO. 20180001-EI**

5 **AUGUST 24, 2018**

6
7 **Q. Please state your name and business address.**

8 A. My name is Charles R. Rote, and my business address is 700 Universe Boulevard,
9 Juno Beach, Florida 33408.

10 **Q. By whom are you currently employed and in what capacity?**

11 A. I am employed by Florida Power & Light Company (FPL) as the Business
12 Services Manager in the Power Generation Division of FPL, where I am
13 responsible for budgeting, forecasting, regulatory reporting and financial internal
14 controls for FPL's fossil generating assets.

15 **Q. What is the purpose of your testimony?**

16 A. The purpose of my testimony is to present FPL's generating unit equivalent
17 availability factor (EAF) targets and average net operating heat rate (ANOHR)
18 targets used in determining the Generating Performance Incentive Factor (GPIF)
19 for the period January through December 2019.

20 **Q. Have you prepared, or caused to have prepared under your direction,
21 supervision, or control, any exhibits in this proceeding?**

22 A. Yes, I am sponsoring Exhibit CRR-2. This Exhibit supports the development of
23 the 2019 GPIF EAF and ANOHR targets. The first page of this exhibit is an

1 index to its contents. All other pages are numbered according to the GPIF
2 Manual as approved by the Commission.

3 **Q. Please summarize the 2019 system targets for EAF and ANOHR for the units
4 to be considered in establishing the GPIF for FPL.**

5 A. For the period of January through December 2019, FPL projects a weighted
6 system equivalent planned outage factor (“EPOF”) of 7.0% and a weighted
7 system equivalent unplanned outage factor (“EUOF”) of 5.8%, which yield a
8 weighted system EAF target of 87.2%. The targets for this period reflect planned
9 refuelings for St. Lucie Unit 1 and Turkey Point Unit 4. FPL also projects a
10 weighted system ANOHR target of 7,306 Btu/kWh for the period January through
11 December 2019. These targets represent fair and reasonable values. Therefore,
12 FPL requests that the targets for these performance indicators be approved by the
13 Commission.

14 **Q. Have you established individual target levels of performance for the units to
15 be considered in establishing the GPIF for FPL?**

16 A. Yes, I have. Exhibit CRR-2, pages 6 and 7, contains the information
17 summarizing the individual targets and ranges for EAF and ANOHR for each of
18 the twelve generating units that FPL proposes to be considered as GPIF units for
19 the period January through December 2019. All of these targets have been
20 derived utilizing the accepted methodologies adopted in the GPIF Manual.

21 **Q. Please summarize FPL’s methodology for determining EAF targets.**

22 A. The GPIF Manual requires that the EAF target for each unit be determined as the
23 difference between 100% and the sum of the EPOF and EUOF. The EPOF for

1 each unit is determined by the duration and magnitude of the planned outage, if
2 any, scheduled for the projected period. The EUOF is determined by the sum of
3 the historical average equivalent forced outage factor and the historical equivalent
4 maintenance outage factor. The EUOF is then adjusted to reflect recent or
5 projected unit overhauls following the projection period.

6 **Q. Please summarize FPL's methodology for determining ANOHR targets.**

7 A. To develop the ANOHR targets, a set of curves that reflect historical ANOHR and
8 unit net output factors are developed for each GPIF unit. The historical data is
9 analyzed for any unusual operating conditions and changes in equipment that
10 affect the predicted heat rate. A regression equation is calculated and a statistical
11 analysis of the historical ANOHR variance with respect to the best fit curve is
12 also performed to identify unusual observations. The resulting equation is used to
13 project ANOHR for the unit using the net output factor from the production
14 costing simulation program, GenTrader. This projected ANOHR value is then
15 used in the GPIF tables and in the calculations to determine the possible fuel
16 savings or losses due to improvements or degradations in heat rate performance.
17 This process is consistent with the GPIF Manual.

18 **Q. How did you select the units to be considered when establishing the GPIF for**
19 **FPL?**

20 A. In accordance with the GPIF Manual, the GPIF units selected are responsible for
21 no less than 80% of the estimated system net generation. The estimated net
22 generation for each unit is taken from the GenTrader model, which forms the
23 basis for the projected levelized fuel cost recovery factor for the period. In this

1 case, the twelve units which FPL proposes to use for the period January through
2 December 2019 represent the top 80.8% of the total forecasted system net
3 generation for this period excluding the Port Everglades and Okeechobee Energy
4 Centers. Port Everglades Energy Center came into service in 2016 and was
5 excluded from the GPIF calculation because there is insufficient historical data to
6 include it. Okeechobee Energy Center is not projected to come into service until
7 the second quarter of 2019. Consistent with the GPIF Manual, these units will be
8 considered in the GPIF calculations once FPL has enough operating history to use
9 in projecting future performance.

10 **Q. Do FPL's 2019 EAF and ANOHR performance targets as shown on Exhibit**
11 **CRR-2 represent reasonable levels of generation availability and efficiency?**

12 A. Yes, they do.

13 **Q. Does this conclude your testimony?**

14 A. Yes, it does.

WITNESS: CHARLES R. ROTE

GENERATING PERFORMANCE INCENTIVE FACTOR

JANUARY THROUGH DECEMBER, 2019

AUGUST 24, 2018

CRR-2

DOCKET NO. 20180001-EI

FPL Witness: Charles R. Rote

Exhibit No.: _____

Pages 1 - 34

EXHIBIT INDEX

FLORIDA POWER & LIGHT COMPANY

JANUARY THROUGH DECEMBER, 2019

<u>EXHIBIT</u>	<u>PAGE NUMBER</u>	<u>TITLE</u>
CRR-2	7.201.001	Exhibit Index
	7.201.002	Projected System Generation
	7.201.003	Units Used to Determine GPIF
	7.201.004	GPIF Reward/Penalty Table (Estimated)
	7.201.005	GPIF Calculation of Maximum Allowed Incentive Dollars (Estimated)
	7.201.006 and 7.201.007	GPIF Target and Range Summary
	7.201.008	GPIF Projected Unit Heat Rate Equations
	7.201.009	Derivation of Weighting Factors
	7.201.010 - 7.201.021	Estimated Unit Performance Data
	7.201.022 - 7.201.033	Unit FOF and MOF vs Time Graphs
	7.201.034	Planned Outages Schedule (Estimated)

**Projected System Generation
January Through December, 2019**

<u>Name</u>	<u>Capacity (MW)</u>	<u>Service Hours</u>	<u>Net Output MWH</u>	<u>NOF %</u>	<u>% of Total Output</u>	<u>Cumulative % of Total Output</u>	<u>Production Cost (\$000)</u>
Port Everglades 5	1,218	8,472	8,981,997	87.0	7.5	7.5	160,137
West County 3	1,121	8,520	8,027,413	84.0	6.7	14.2	147,811
Ft. Myers 2	1,774	8,760	7,984,326	51.4	6.7	20.8	170,022
Okeechobee 1	1,778	5,136	7,948,334	87.0	6.6	27.4	134,453
St. Lucie 1	981	8,040	7,762,480	98.4	6.5	33.9	41,564
West County 1	1,145	8,518	7,759,302	79.6	6.5	40.4	142,940
St. Lucie 2	840	8,760	7,249,544	98.5	6.0	46.4	39,690
Turkey Point 3	831	8,760	7,196,506	98.9	6.0	52.4	46,737
Riviera 5	1,201	8,760	7,007,574	66.6	5.8	58.2	132,913
West County 2	1,071	8,136	6,935,986	79.6	5.8	64.0	131,245
Turkey Point 4	841	7,680	6,347,579	98.3	5.3	69.3	38,131
Cape Canaveral 3	1,201	8,088	6,245,719	64.3	5.2	74.5	119,460
Martin 8	1,178	7,554	5,448,056	61.2	4.5	79.0	104,952
Manatee 3	1,195	7,469	5,316,388	59.6	4.4	83.5	103,877
Turkey Point 5	1,179	6,192	4,400,844	60.3	3.7	87.1	87,420
Sanford 5	1,164	4,336	2,754,605	54.6	2.3	89.4	55,791
Sanford 4	1,070	4,304	2,605,614	56.6	2.2	91.6	54,740
Scherer 4	625	8,760	2,485,260	45.4	2.1	93.7	65,971
Martin 4	476	5,412	1,295,317	50.3	1.1	94.7	28,769
Martin 3	476	5,246	1,246,312	49.9	1.0	95.8	27,327
Manatee 2	767	2,818	748,114	34.6	0.6	96.4	32,686
Manatee 1	767	2,556	699,705	35.7	0.6	97.0	32,196
Lauderdale 6B	208	1,068	208,909	94.0	0.2	97.2	6,040
Lauderdale 6A	208	1,055	206,559	94.1	0.2	97.3	5,975
Horizon PV Solar	74.5	4,443	176,149	53.2	0.1	97.5	0
Hammock PV Solar	74.5	4,413	175,683	53.4	0.1	97.6	0
Barefoot PV Solar	74.5	4,444	175,667	53.1	0.1	97.8	0
Wildflower PV Solar	74.5	4,443	175,621	53.1	0.1	97.9	0
Coral Farms PV Solar	74.5	4,443	175,092	52.9	0.1	98.1	0
Loggerhead PV Solar	74.5	4,444	172,862	52.2	0.1	98.2	0
Babcock PV Solar	74.5	4,324	172,256	53.5	0.1	98.4	0
Citrus PV Solar	74.5	4,324	172,256	53.5	0.1	98.5	0
Manatee PV Solar	74.5	4,324	172,256	53.5	0.1	98.6	0
Blue Cypress PV Solar	74.5	4,444	171,321	51.7	0.1	98.8	0
Indian River PV Solar	74.5	4,444	171,108	51.7	0.1	98.9	0
Interstate PV Solar	74.5	3,795	145,815	51.6	0.1	99.0	0
Miami-Dade PV Solar	74.5	3,795	145,815	51.6	0.1	99.2	0
Pioneer Trail PV Solar	74.5	3,795	145,815	51.6	0.1	99.3	0
Sunshine Gateway PV Solar	74.5	3,795	145,815	51.6	0.1	99.4	0
Ft. Myers 3C	208	765	131,050	82.3	0.1	99.5	6,746
Ft. Myers 3D	208	793	129,645	78.6	0.1	99.6	6,667
Ft. Myers 3A	190	658	112,674	90.0	0.1	99.7	3,396
Ft. Myers 3B	190	603	104,578	91.2	0.1	99.8	3,174
DeSoto PV Solar	25	4,168	51,973	49.9	0.0	99.9	0
Lauderdale 6C	208	381	51,370	64.8	0.0	99.9	10,326
Lauderdale 6E	208	359	50,615	67.8	0.0	99.9	9,935
Lauderdale 6D	208	330	45,105	65.7	0.0	100.0	8,988
Space Coast PV Solar	10	3,895	17,652	45.3	0.0	100.0	0
Ft. Myers GTs	96	110	5,644	53.7	0.0	100.0	1,260
Lauderdale GTs	57	110	3,875	61.6	0.0	100.0	1,068
Total	26,041		120,060,155		100.0		1,962,410

**UNITS TO BE USED TO DETERMINE THE
GENERATING PERFORMANCE INCENTIVE FACTOR**

**FLORIDA POWER & LIGHT COMPANY
JANUARY THROUGH DECEMBER, 2019**

Cape Canaveral 3

Ft. Myers 2

Manatee 3

Martin 8

Riviera 5

St. Lucie 1

St. Lucie 2

Turkey Point 3

Turkey Point 4

West County 1

West County 2

West County 3

GENERATING PERFORMANCE INCENTIVE FACTOR

REWARD/PENALTY TABLE (ESTIMATED)

**FLORIDA POWER & LIGHT COMPANY
JANUARY THROUGH DECEMBER, 2019**

Generating Performance Incentive Points (GPIF)	Fuel Savings/(Loss) (\$000)	Generating Performance Incentive Factor (\$000)
+ 10	47,637	23,819
+ 9	42,873	21,437
+ 8	38,110	19,055
+ 7	33,346	16,673
+ 6	28,582	14,291
+ 5	23,819	11,909
+ 4	19,055	9,527
+ 3	14,291	7,146
+ 2	9,527	4,764
+ 1	4,764	2,382
0	0	0
- 1	(4,764)	(2,382)
- 2	(9,527)	(4,764)
- 3	(14,291)	(7,146)
- 4	(19,055)	(9,527)
- 5	(23,819)	(11,909)
- 6	(28,582)	(14,291)
- 7	(33,346)	(16,673)
- 8	(38,110)	(19,055)
- 9	(42,873)	(21,437)
- 10	(47,637)	(23,819)

GENERATING PERFORMANCE INCENTIVE FACTOR

CALCULATION OF MAXIMUM ALLOWED INCENTIVE DOLLARS (ESTIMATED)

FLORIDA POWER & LIGHT COMPANY
PERIOD OF: JANUARY THROUGH DECEMBER, 2019

LINE 1	BEGINNING OF PERIOD BALANCE OF COMMON EQUITY		\$	20,341,274,315	
	END OF MONTH BALANCE OF COMMON EQUITY				
LINE 2	MONTH OF JANUARY	2019	\$	20,554,699,942	
LINE 3	MONTH OF FEBRUARY	2019	\$	20,722,578,667	
LINE 4	MONTH OF MARCH	2019	\$	20,028,289,733	
LINE 5	MONTH OF APRIL	2019	\$	20,223,303,865	
LINE 6	MONTH OF MAY	2019	\$	20,442,800,850	
LINE 7	MONTH OF JUNE	2019	\$	20,699,360,718	
LINE 8	MONTH OF JULY	2019	\$	20,256,595,180	
LINE 9	MONTH OF AUGUST	2019	\$	20,511,364,456	
LINE 10	MONTH OF SEPTEMBER	2019	\$	20,670,487,780	
LINE 11	MONTH OF OCTOBER	2019	\$	20,313,163,537	
LINE 12	MONTH OF NOVEMBER	2019	\$	20,493,654,280	
LINE 13	MONTH OF DECEMBER	2019	\$	20,574,605,415	
LINE 14	AVERAGE COMMON EQUITY FOR THE PERIOD (SUMMATION OF LINE 1 THROUGH LINE 13 DIVIDED BY 13)		\$	20,448,629,134	
LINE 15	25 BASIS POINTS			0.0025	
LINE 16	REVENUE EXPANSION FACTOR			74.6012%	
LINE 17	MAXIMUM ALLOWED INCENTIVE DOLLARS (LINE 14 TIMES LINE 15 DIVIDED BY LINE 16)		\$	68,526,475	
LINE 18	JURISDICTIONAL SALES			108,208,558,911	KWH
LINE 19	TOTAL SALES			113,839,280,734	KWH
LINE 20	JURISDICTIONAL SEPARATION FACTOR (LINE 18 DIVIDED BY LINE 19)			95.05%	
LINE 21	MAXIMUM ALLOWED JURISDICTIONAL INCENTIVE DOLLARS (LINE 17 TIMES LINE 20)		\$	65,134,414	
LINE 22	INCENTIVE CAP (50 PERCENT OF PROJECTED FUEL SAVINGS AT 10 GPIF-POINT LEVEL FROM SHEET NO. 3.515)		\$	23,818,500	
LINE 23	MAXIMUM ALLOWED GPIF REWARD (AT 10 GPIF-POINT LEVEL) (THE LESSER OF LINE 21 AND LINE 22)		\$	23,818,500	

Note: Line 22 and 23 are as approved by Commission order PSC-13-0665-FOF-EI dated 12/18/13 effective 1/1/14.

GPIF TARGET AND RANGE SUMMARY

FLORIDA POWER & LIGHT COMPANY
PERIOD OF: JANUARY THROUGH DECEMBER, 2019

<u>Plant / Unit</u>	<u>Weighting Factor (%)</u>	<u>EAF Target (%)</u>	<u>EAF Range</u>		<u>Max. Fuel Savings (\$000's)</u>	<u>Max. Fuel Loss (\$000's)</u>
			<u>Max. (%)</u>	<u>Min. (%)</u>		
Cape Canaveral 3	2.89	77.7	80.7	74.7	1,375	-1,375
Manatee 3	2.19	91.2	93.7	88.7	1,044	-1,044
Ft. Myers 2	2.51	81.5	84.0	79.0	1,195	-1,195
Martin 8	2.20	90.8	93.3	88.3	1,047	-1,047
Riviera 5	2.67	86.7	89.2	84.2	1,270	-1,270
St. Lucie 1	8.73	84.6	87.6	81.6	4,157	-4,157
St. Lucie 2	8.08	93.6	96.6	90.6	3,848	-3,848
Turkey Point 3	7.55	93.6	96.6	90.6	3,597	-3,597
Turkey Point 4	6.85	81.3	84.3	78.3	3,263	-3,263
West County 1	4.01	87.4	90.4	84.4	1,913	-1,913
West County 2	2.49	84.5	87.0	82.0	1,186	-1,186
West County 3	4.14	86.8	89.8	83.8	1,972	-1,972
	54.31				25,867	-25,867

GPIF TARGET AND RANGE SUMMARY

FLORIDA POWER & LIGHT COMPANY
PERIOD OF: JANUARY THROUGH DECEMBER, 2019

<u>Plant / Unit</u>	<u>Weighting Factor (%)</u>	<u>ANOHR TARGET BTU/KWH</u>	<u>NOF</u>	<u>ANOHR RANGE BTU/KWH</u>	<u>BTU/KWH</u>	<u>Max. Fuel Savings (\$000's)</u>	<u>Max. Fuel Loss (\$000's)</u>
Cape Canaveral 3	4.79	6,644	64.3	6,517	6,771	2,283	-2,283
Manatee 3	4.22	6,924	59.6	6,790	7,058	2,010	-2,010
Ft. Myers 2	6.41	7,298	51.4	7,167	7,429	3,052	-3,052
Martin 8	4.80	6,977	61.2	6,825	7,129	2,286	-2,286
Riviera 5	3.90	6,661	66.6	6,568	6,754	1,856	-1,856
St. Lucie 1	0.82	10,404	98.4	10,305	10,503	393	-393
St. Lucie 2	0.72	10,268	98.5	10,178	10,358	344	-344
Turkey Point 3	1.41	11,021	98.9	10,866	11,176	674	-674
Turkey Point 4	1.28	10,954	98.3	10,782	11,126	612	-612
West County 1	5.65	7,012	79.6	6,880	7,144	2,691	-2,691
West County 2	5.51	6,946	79.6	6,807	7,085	2,626	-2,626
West County 3	6.18	6,982	84.0	6,843	7,121	2,943	-2,943
	<u>45.69</u>					<u>21,770</u>	<u>-21,770</u>

**GENERATING PERFORMANCE INCENTIVE FACTOR
PROJECTED UNIT HEAT RATE EQUATIONS
FLORIDA POWER & LIGHT COMPANY
PERIOD OF: JANUARY THROUGH DECEMBER, 2019**

<u>Plant/Unit</u>	<u>ANOHR</u>	<u>NOF</u>	<u>MW</u>	<u>ANOHR Equation</u>			<u>First</u>	<u>Last</u>	<u>Exclusions</u>
				<u>a coef.</u>	<u>b coef.</u>	<u>Bounds</u>			
Cape Canaveral 3	6,644	64.3	1201	6711	-1.04	127	07-15	06-18	None
Manatee 3	6,924	59.6	1195	6998	-1.25	134	07-15	06-18	1/16, 5/17-7/17, 11/17, 12/17
Ft. Myers 2	7,298	51.4	1774	7538	-4.66	131	07-15	06-18	12/17
Martin 8	6,977	61.2	1178	7068	-1.49	152	07-15	06-18	2/16, 2/17-4/17
Riviera 5	6,661	66.6	1201	6949	-4.33	93	07-15	06-18	2/16
St. Lucie 1	10,404	98.4	981	13242	-28.84	99	07-15	06-18	8/16, 10/16
St. Lucie 2	10,268	98.5	840	12306	-20.69	90	07-15	06-18	None
Turkey Point 3	11,021	98.9	831	15575	-46.05	155	07-15	06-18	7/15, 8/15, 11/15, 4/17
Turkey Point 4	10,954	98.3	841	15685	-48.13	172	07-15	06-18	7/15, 4/16, 10/16, 10/17
West County 1	7,012	79.6	1145	7653	-8.05	132	07-15	06-18	4/17
West County 2	6,946	79.6	1071	7636	-8.67	139	07-15	06-18	10/15, 11/15
West County 3	6,982	84.0	1121	7245	-3.13	139	07-15	06-18	5/16, 8/16

DERIVATION OF WEIGHTING FACTORS

FLORIDA POWER & LIGHT COMPANY
PERIOD OF: JANUARY THROUGH DECEMBER, 2019

PRODUCTION COSTING SIMULATION
FUEL COST (\$000)

Unit	Performance Indicator	At Target (1)	At Maximum Improvement (2)	Savings (3)	Factor (% Of Savings)
Cape Canaveral 3	EAF	1,962,410	1,961,035	1,375	2.89
Cape Canaveral 3	ANOHR	1,962,410	1,960,127	2,283	4.79
Manatee 3	EAF	1,962,410	1,961,366	1,044	2.19
Manatee 3	ANOHR	1,962,410	1,960,400	2,010	4.22
Ft. Myers 2	EAF	1,962,410	1,961,215	1,195	2.51
Ft. Myers 2	ANOHR	1,962,410	1,959,358	3,052	6.41
Martin 8	EAF	1,962,410	1,961,363	1,047	2.20
Martin 8	ANOHR	1,962,410	1,960,124	2,286	4.80
Riviera 5	EAF	1,962,410	1,961,140	1,270	2.67
Riviera 5	ANOHR	1,962,410	1,960,554	1,856	3.90
St. Lucie 1	EAF	1,962,410	1,958,253	4,157	8.73
St. Lucie 1	ANOHR	1,962,410	1,962,017	393	0.82
St. Lucie 2	EAF	1,962,410	1,958,562	3,848	8.08
St. Lucie 2	ANOHR	1,962,410	1,962,066	344	0.72
Turkey Point 3	EAF	1,962,410	1,958,813	3,597	7.55
Turkey Point 3	ANOHR	1,962,410	1,961,736	674	1.41
Turkey Point 4	EAF	1,962,410	1,959,147	3,263	6.85
Turkey Point 4	ANOHR	1,962,410	1,961,798	612	1.28
West County 1	EAF	1,962,410	1,960,497	1,913	4.01
West County 1	ANOHR	1,962,410	1,959,719	2,691	5.65
West County 2	EAF	1,962,410	1,961,224	1,186	2.49
West County 2	ANOHR	1,962,410	1,959,784	2,626	5.51
West County 3	EAF	1,962,410	1,960,438	1,972	4.14
West County 3	ANOHR	1,962,410	1,959,467	2,943	6.18
TOTAL				47,637	100.00

(1) FUEL ADJUSTMENT - ALL UNITS PERFORMANCE AT TARGET

(2) ALL OTHER UNITS PERFORMANCE AT TARGET

(3) EXPRESSED IN REPLACEMENT ENERGY COSTS.

ESTIMATED UNIT PERFORMANCE DATA

FLORIDA POWER & LIGHT

PERIOD OF: JANUARY THROUGH DECEMBER, 2019

Cape Canaveral 3	Jan '19	Feb '19	Mar '19	Apr '19	May '19	Jun '19
1 EAF (%)	90.5	90.5	69.0	79.4	60.3	84.4
2 EPOF (%)	0.0	0.0	23.7	12.2	33.3	6.7
3 EUOF (%)	9.5	9.5	7.3	8.4	6.4	8.9
4 EUOR (%)	9.5	9.5	7.3	8.4	6.4	8.9
5 PH	744	672	744	720	744	720
6 SH	744	672	744	720	744	720
7 RSH	0	0	0	0	0	0
8 UH	0	0	0	0	0	0
9 POH	0	0	0	0	0	0
10 FOH & EFOH	17	16	13	15	12	16
11 MOH & EMOH	54	48	41	46	36	48
12 Oper Mbtu	4,461,362	4,014,066	3,557,601	3,760,629	2,950,430	3,535,180
13 Net Gen (MWH)	672,601	605,166	535,058	566,104	443,074	531,846
14 ANOHR (Btu/KWH)	6,633	6,633	6,649	6,643	6,659	6,647
15 NOF (%)	75.3	75.0	59.9	65.5	49.6	61.5
16 NSC (MW)	1,201	1,201	1,201	1,201	1,201	1,201
17 ANOHR Equation	-1.04 x NOF + 6711					

Cape Canaveral 3	Jul '19	Aug '19	Sep '19	Oct '19	Nov '19	Dec '19	Total
1 EAF (%)	90.5	90.5	90.5	78.8	18.1	90.5	77.7
2 EPOF (%)	0.0	0.0	0.0	12.9	80.0	0.0	14.1
3 EUOF (%)	9.5	9.5	9.5	8.3	1.9	9.5	8.2
4 EUOR (%)	9.5	9.5	9.5	9.5	9.5	9.5	8.9
5 PH	744	744	720	744	720	744	8,760
6 SH	744	744	720	648	144	744	8,088
7 RSH	0	0	0	0	0	0	0
8 UH	0	0	0	96	576	0	672
9 POH	0	0	0	96	576	0	672
10 FOH & EFOH	17	17	17	15	3	17	175
11 MOH & EMOH	54	54	52	47	10	54	543
12 Oper Mbtu	3,716,018	3,754,166	3,915,615	3,330,219	816,072	3,681,620	41,496,557
13 Net Gen (MWH)	559,136	564,961	589,701	501,237	122,958	553,877	6,245,719
14 ANOHR (Btu/KWH)	6,646	6,645	6,640	6,644	6,637	6,647	6,644
15 NOF (%)	62.6	63.2	68.2	64.4	71.1	62.0	64.3
16 NSC (MW)	1,201	1,201	1,201	1,201	1,201	1,201	1,201
17 ANOHR Equation	-1.04 x NOF + 6711						

ESTIMATED UNIT PERFORMANCE DATA

FLORIDA POWER & LIGHT

PERIOD OF: JANUARY THROUGH DECEMBER, 2019

Ft. Myers 2	Jan '19	Feb '19	Mar '19	Apr '19	May '19	Jun '19
1 EAF (%)	86.1	69.3	47.7	38.2	77.1	94.0
2 EPOF (%)	8.4	26.3	49.2	59.4	18.0	0.0
3 EUOF (%)	5.5	4.4	3.1	2.4	4.9	6.0
4 EUOR (%)	5.5	4.4	3.1	2.4	4.9	6.0
5 PH	744	672	744	720	744	720
6 SH	744	672	744	720	744	720
7 RSH	0	0	0	0	0	0
8 UH	0	0	0	0	0	0
9 POH	0	0	0	0	0	0
10 FOH & EFOH	16	11	9	7	14	17
11 MOH & EMOH	25	18	14	11	23	27
12 Oper Mbtu	3,741,948	3,221,729	3,253,203	2,960,186	5,445,964	5,612,168
13 Net Gen (MWH)	508,486	437,319	440,694	400,458	748,689	773,452
14 ANOHR (Btu/KWH)	7,359	7,367	7,382	7,392	7,274	7,256
15 NOF (%)	38.5	36.7	33.4	31.4	56.7	60.6
16 NSC (MW)	1,774	1,774	1,774	1,774	1,774	1,774
17 ANOHR Equation	-4.66 x NOF + 7538					

Ft. Myers 2	Jul '19	Aug '19	Sep '19	Oct '19	Nov '19	Dec '19	Total
1 EAF (%)	94.0	94.0	94.0	94.0	94.0	94.0	81.5
2 EPOF (%)	0.0	0.0	0.0	0.0	0.0	0.0	13.3
3 EUOF (%)	6.0	6.0	6.0	6.0	6.0	6.0	5.2
4 EUOR (%)	6.0	6.0	6.0	6.0	6.0	6.0	5.2
5 PH	744	744	720	744	720	744	8,760
6 SH	744	744	720	744	720	744	8,760
7 RSH	0	0	0	0	0	0	0
8 UH	0	0	0	0	0	0	0
9 POH	0	0	0	0	0	0	0
10 FOH & EFOH	17	17	17	17	17	17	175
11 MOH & EMOH	27	27	27	27	27	27	280
12 Oper Mbtu	5,824,909	5,825,840	5,801,510	5,545,535	5,499,629	5,443,549	58,269,611
13 Net Gen (MWH)	802,882	803,121	800,650	762,902	757,316	748,357	7,984,326
14 ANOHR (Btu/KWH)	7,255	7,254	7,246	7,269	7,262	7,274	7,298
15 NOF (%)	60.8	60.9	62.7	57.8	59.3	56.7	51.4
16 NSC (MW)	1,774	1,774	1,774	1,774	1,774	1,774	1,774
17 ANOHR Equation	-4.66 x NOF + 7538						

ESTIMATED UNIT PERFORMANCE DATA

FLORIDA POWER & LIGHT

PERIOD OF: JANUARY THROUGH DECEMBER, 2019

Manatee 3	Jan '19	Feb '19	Mar '19	Apr '19	May '19	Jun '19
1 EAF (%)	93.9	93.9	93.9	93.9	93.9	93.9
2 EPOF (%)	0.0	0.0	0.0	0.0	0.0	0.0
3 EUOF (%)	6.1	6.1	6.1	6.1	6.1	6.1
4 EUOR (%)	8.0	7.4	6.5	6.1	6.8	6.1
5 PH	744	672	744	720	744	720
6 SH	568	550	698	720	661	720
7 RSH	176	122	46	0	83	0
8 UH	0	0	0	0	0	0
9 POH	0	0	0	0	0	0
10 FOH & EFOH	15	14	15	15	15	15
11 MOH & EMOH	30	27	30	29	30	29
12 Oper Mbtu	2,663,951	2,756,714	3,621,790	3,915,272	3,566,422	3,358,396
13 Net Gen (MWH)	384,575	398,254	523,380	566,118	515,677	484,757
14 ANOHR (Btu/KWH)	6,927	6,922	6,920	6,916	6,916	6,928
15 NOF (%)	56.7	60.6	62.7	65.8	65.3	56.3
16 NSC (MW)	1,195	1,195	1,195	1,195	1,195	1,195
17 ANOHR Equation	-1.25 x NOF + 6998					

Manatee 3	Jul '19	Aug '19	Sep '19	Oct '19	Nov '19	Dec '19	Total
1 EAF (%)	93.9	93.9	93.9	62.1	93.9	93.9	91.2
2 EPOF (%)	0.0	0.0	0.0	33.9	0.0	0.0	2.9
3 EUOF (%)	6.1	6.1	6.1	4.0	6.1	6.1	5.9
4 EUOR (%)	6.1	6.1	6.1	5.2	9.1	15.8	6.9
5 PH	744	744	720	744	720	744	8,760
6 SH	744	744	720	576	482	286	7,469
7 RSH	0	0	0	0	238	458	1123
8 UH	0	0	0	168	0	0	168
9 POH	0	0	0	168	0	0	168
10 FOH & EFOH	15	15	15	10	15	15	175
11 MOH & EMOH	30	30	29	20	29	30	342
12 Oper Mbtu	3,500,504	3,488,458	3,600,361	2,530,125	2,440,490	1,364,332	36,810,671
13 Net Gen (MWH)	505,342	503,603	520,133	364,992	352,570	196,987	5,316,388
14 ANOHR (Btu/KWH)	6,927	6,927	6,922	6,932	6,922	6,926	6,924
15 NOF (%)	56.8	56.6	60.5	53.0	61.2	57.6	59.6
16 NSC (MW)	1,195	1,195	1,195	1,195	1,195	1,195	1,195
17 ANOHR Equation	-1.25 x NOF + 6998						

ESTIMATED UNIT PERFORMANCE DATA

FLORIDA POWER & LIGHT

PERIOD OF: JANUARY THROUGH DECEMBER, 2019

Martin 8	Jan '19	Feb '19	Mar '19	Apr '19	May '19	Jun '19
1 EAF (%)	93.3	93.3	93.3	93.3	93.3	93.3
2 EPOF (%)	0.0	0.0	0.0	0.0	0.0	0.0
3 EUOF (%)	6.7	6.7	6.7	6.7	6.7	6.7
4 EUOR (%)	6.7	6.7	6.7	6.7	6.7	6.7
5 PH	744	672	744	720	744	720
6 SH	744	672	744	720	744	720
7 RSH	0	0	0	0	0	0
8 UH	0	0	0	0	0	0
9 POH	0	0	0	0	0	0
10 FOH & EFOH	15	14	15	15	15	15
11 MOH & EMOH	34	31	34	33	34	33
12 Oper Mbtu	3,343,887	3,218,911	3,875,508	4,007,976	4,024,638	3,414,072
13 Net Gen (MWH)	478,587	461,096	555,708	575,280	577,423	488,982
14 ANOHR (Btu/KWH)	6,987	6,981	6,974	6,967	6,970	6,982
15 NOF (%)	54.6	58.2	63.4	67.8	65.9	57.7
16 NSC (MW)	1,178	1,178	1,178	1,178	1,178	1,178
17 ANOHR Equation	-1.49 x NOF + 7068					

Martin 8	Jul '19	Aug '19	Sep '19	Oct '19	Nov '19	Dec '19	Total
1 EAF (%)	93.3	93.3	93.3	93.3	93.3	63.2	90.8
2 EPOF (%)	0.0	0.0	0.0	0.0	0.0	32.3	2.7
3 EUOF (%)	6.7	6.7	6.7	6.7	6.7	4.5	6.5
4 EUOR (%)	6.7	6.7	6.7	8.4	15.9	31.2	7.5
5 PH	744	744	720	744	720	744	8,760
6 SH	744	744	720	592	302	108	7,554
7 RSH	0	0	0	152	418	396	966
8 UH	0	0	0	0	0	240	240
9 POH	0	0	0	0	0	240	240
10 FOH & EFOH	15	15	15	15	15	10	175
11 MOH & EMOH	34	34	33	34	33	23	394
12 Oper Mbtu	3,610,237	3,574,586	3,579,114	3,119,252	1,650,761	589,062	38,011,087
13 Net Gen (MWH)	517,226	512,045	512,914	447,397	236,872	84,526	5,448,056
14 ANOHR (Btu/KWH)	6,980	6,981	6,978	6,972	6,969	6,969	6,977
15 NOF (%)	59.0	58.4	60.5	64.2	66.6	66.4	61.2
16 NSC (MW)	1,178	1,178	1,178	1,178	1,178	1,178	1,178
17 ANOHR Equation	-1.49 x NOF + 7068						

ESTIMATED UNIT PERFORMANCE DATA

FLORIDA POWER & LIGHT

PERIOD OF: JANUARY THROUGH DECEMBER, 2019

Riviera 5	Jan '19	Feb '19	Mar '19	Apr '19	May '19	Jun '19
1 EAF (%)	92.1	77.9	61.5	91.1	72.3	92.1
2 EPOF (%)	0.0	15.5	33.3	1.1	21.5	0.0
3 EUOF (%)	7.9	6.6	5.2	7.8	6.2	7.9
4 EUOR (%)	7.9	6.6	5.2	7.8	6.2	7.9
5 PH	744	672	744	720	744	720
6 SH	744	672	744	720	744	720
7 RSH	0	0	0	0	0	0
8 UH	0	0	0	0	0	0
9 POH	0	0	0	0	0	0
10 FOH & EFOH	16	12	11	15	12	15
11 MOH & EMOH	43	33	28	41	34	41
12 Oper Mbtu	4,101,720	3,699,220	3,394,902	4,531,696	3,352,829	3,880,066
13 Net Gen (MWH)	616,800	556,190	506,475	685,997	499,900	582,855
14 ANOHR (Btu/KWH)	6,650	6,651	6,703	6,606	6,707	6,657
15 NOF (%)	69.0	68.9	56.7	79.3	55.9	67.4
16 NSC (MW)	1,201	1,201	1,201	1,201	1,201	1,201
17 ANOHR Equation	-4.33 x NOF + 6949					

Riviera 5	Jul '19	Aug '19	Sep '19	Oct '19	Nov '19	Dec '19	Total
1 EAF (%)	92.1	92.1	92.1	92.1	92.1	92.1	86.7
2 EPOF (%)	0.0	0.0	0.0	0.0	0.0	0.0	5.9
3 EUOF (%)	7.9	7.9	7.9	7.9	7.9	7.9	7.4
4 EUOR (%)	7.9	7.9	7.9	7.9	7.9	7.9	7.4
5 PH	744	744	720	744	720	744	8,760
6 SH	744	744	720	744	720	744	8,760
7 RSH	0	0	0	0	0	0	0
8 UH	0	0	0	0	0	0	0
9 POH	0	0	0	0	0	0	0
10 FOH & EFOH	16	16	15	16	15	16	175
11 MOH & EMOH	43	43	41	43	41	43	473
12 Oper Mbtu	3,973,736	3,850,320	4,095,857	3,985,824	3,986,069	3,806,593	46,677,450
13 Net Gen (MWH)	596,657	577,346	616,846	598,562	599,499	570,447	7,007,574
14 ANOHR (Btu/KWH)	6,660	6,669	6,640	6,659	6,649	6,673	6,661
15 NOF (%)	66.8	64.6	71.3	67.0	69.3	63.8	66.6
16 NSC (MW)	1,201	1,201	1,201	1,201	1,201	1,201	1,201
17 ANOHR Equation	-4.33 x NOF + 6949						

ESTIMATED UNIT PERFORMANCE DATA

FLORIDA POWER & LIGHT

PERIOD OF: JANUARY THROUGH DECEMBER, 2019

St. Lucie 1	Jan '19	Feb '19	Mar '19	Apr '19	May '19	Jun '19
1 EAF (%)	92.2	92.2	92.2	92.2	92.2	92.2
2 EPOF (%)	0.0	0.0	0.0	0.0	0.0	0.0
3 EUOF (%)	7.8	7.8	7.8	7.8	7.8	7.8
4 EUOR (%)	7.8	7.8	7.8	7.8	7.8	7.8
5 PH	744	672	744	720	744	720
6 SH	744	672	744	720	744	720
7 RSH	0	0	0	0	0	0
8 UH	0	0	0	0	0	0
9 POH	0	0	0	0	0	0
10 FOH & EFOH	32	29	32	31	32	31
11 MOH & EMOH	26	23	26	25	26	25
12 Oper Mbtu	7,538,007	6,808,522	7,538,007	7,179,267	7,418,576	7,179,267
13 Net Gen (MWH)	726,905	656,560	726,905	688,329	711,273	688,329
14 ANOHR (Btu/KWH)	10,370	10,370	10,370	10,430	10,430	10,430
15 NOF (%)	99.6	99.6	99.6	97.5	97.5	97.5
16 NSC (MW)	981	981	981	981	981	981
17 ANOHR Equation	-28.84 x NOF + 13242					

St. Lucie 1	Jul '19	Aug '19	Sep '19	Oct '19	Nov '19	Dec '19	Total
1 EAF (%)	92.2	92.2	3.0	89.2	92.2	92.2	84.6
2 EPOF (%)	0.0	0.0	96.7	3.2	0.0	0.0	8.2
3 EUOF (%)	7.8	7.8	0.3	7.6	7.8	7.8	7.2
4 EUOR (%)	7.8	7.8	7.8	7.8	7.8	7.8	7.8
5 PH	744	744	720	744	720	744	8,760
6 SH	744	744	24	720	720	744	8,040
7 RSH	0	0	0	0	0	0	0
8 UH	0	0	696	24	0	0	720
9 POH	0	0	696	24	0	0	720
10 FOH & EFOH	32	32	1	31	31	32	350
11 MOH & EMOH	26	26	1	25	25	26	280
12 Oper Mbtu	7,418,576	7,418,576	239,309	7,179,267	7,294,845	7,538,007	80,760,844
13 Net Gen (MWH)	711,273	711,273	22,944	688,329	703,457	726,905	7,762,480
14 ANOHR (Btu/KWH)	10,430	10,430	10,430	10,430	10,370	10,370	10,404
15 NOF (%)	97.5	97.5	97.5	97.5	99.6	99.6	98.4
16 NSC (MW)	981	981	981	981	981	981	981
17 ANOHR Equation	-28.84 x NOF + 13242						

ESTIMATED UNIT PERFORMANCE DATA

FLORIDA POWER & LIGHT

PERIOD OF: JANUARY THROUGH DECEMBER, 2019

St. Lucie 2	Jan '19	Feb '19	Mar '19	Apr '19	May '19	Jun '19
1 EAF (%)	93.6	93.6	93.6	93.6	93.6	93.6
2 EPOF (%)	0.0	0.0	0.0	0.0	0.0	0.0
3 EUOF (%)	6.4	6.4	6.4	6.4	6.4	6.4
4 EUOR (%)	6.4	6.4	6.4	6.4	6.4	6.4
5 PH	744	672	744	720	744	720
6 SH	744	672	744	720	744	720
7 RSH	0	0	0	0	0	0
8 UH	0	0	0	0	0	0
9 POH	0	0	0	0	0	0
10 FOH & EFOH	24	22	24	23	24	23
11 MOH & EMOH	24	22	24	23	24	23
12 Oper Mbtu	6,392,680	5,774,039	6,392,680	6,070,089	6,272,421	6,070,089
13 Net Gen (MWH)	624,346	563,926	624,346	589,959	609,624	589,959
14 ANOHR (Btu/KWH)	10,239	10,239	10,239	10,289	10,289	10,289
15 NOF (%)	99.9	99.9	99.9	97.5	97.5	97.5
16 NSC (MW)	840	840	840	840	840	840
17 ANOHR Equation	-20.69 x NOF + 12306					

St. Lucie 2	Jul '19	Aug '19	Sep '19	Oct '19	Nov '19	Dec '19	Total
1 EAF (%)	93.6	93.6	93.6	93.6	93.6	93.6	93.6
2 EPOF (%)	0.0	0.0	0.0	0.0	0.0	0.0	0.0
3 EUOF (%)	6.4	6.4	6.4	6.4	6.4	6.4	6.4
4 EUOR (%)	6.4	6.4	6.4	6.4	6.4	6.4	6.4
5 PH	744	744	720	744	720	744	8,760
6 SH	744	744	720	744	720	744	8,760
7 RSH	0	0	0	0	0	0	0
8 UH	0	0	0	0	0	0	0
9 POH	0	0	0	0	0	0	0
10 FOH & EFOH	24	24	23	24	23	24	280
11 MOH & EMOH	24	24	23	24	23	24	280
12 Oper Mbtu	6,272,421	6,272,421	6,070,089	6,272,421	6,186,467	6,392,680	74,438,315
13 Net Gen (MWH)	609,624	609,624	589,959	609,624	604,206	624,346	7,249,544
14 ANOHR (Btu/KWH)	10,289	10,289	10,289	10,289	10,239	10,239	10,268
15 NOF (%)	97.5	97.5	97.5	97.5	99.9	99.9	98.5
16 NSC (MW)	840	840	840	840	840	840	840
17 ANOHR Equation	-20.69 x NOF + 12306						

ESTIMATED UNIT PERFORMANCE DATA

FLORIDA POWER & LIGHT

PERIOD OF: JANUARY THROUGH DECEMBER, 2019

Turkey Point 3	Jan '19	Feb '19	Mar '19	Apr '19	May '19	Jun '19
1 EAF (%)	93.6	93.6	93.6	93.6	93.6	93.6
2 EPOF (%)	0.0	0.0	0.0	0.0	0.0	0.0
3 EUOF (%)	6.4	6.4	6.4	6.4	6.4	6.4
4 EUOR (%)	6.4	6.4	6.4	6.4	6.4	6.4
5 PH	744	672	744	720	744	720
6 SH	744	672	744	720	744	720
7 RSH	0	0	0	0	0	0
8 UH	0	0	0	0	0	0
9 POH	0	0	0	0	0	0
10 FOH & EFOH	24	22	24	23	24	23
11 MOH & EMOH	24	22	24	23	24	23
12 Oper Mbtu	6,812,560	6,153,278	6,812,560	6,466,568	6,682,116	6,466,568
13 Net Gen (MWH)	623,119	562,817	623,119	583,362	602,807	583,362
14 ANOHR (Btu/KWH)	10,933	10,933	10,933	11,085	11,085	11,085
15 NOF (%)	100.8	100.8	100.8	97.5	97.5	97.5
16 NSC (MW)	831	831	831	831	831	831
17 ANOHR Equation	-46.05 x NOF + 15575					

Turkey Point 3	Jul '19	Aug '19	Sep '19	Oct '19	Nov '19	Dec '19	Total
1 EAF (%)	93.6	93.6	93.6	93.6	93.6	93.6	93.6
2 EPOF (%)	0.0	0.0	0.0	0.0	0.0	0.0	0.0
3 EUOF (%)	6.4	6.4	6.4	6.4	6.4	6.4	6.4
4 EUOR (%)	6.4	6.4	6.4	6.4	6.4	6.4	6.4
5 PH	744	744	720	744	720	744	8,760
6 SH	744	744	720	744	720	744	8,760
7 RSH	0	0	0	0	0	0	0
8 UH	0	0	0	0	0	0	0
9 POH	0	0	0	0	0	0	0
10 FOH & EFOH	24	24	23	24	23	24	280
11 MOH & EMOH	24	24	23	24	23	24	280
12 Oper Mbtu	6,682,116	6,682,116	6,466,568	6,682,116	6,592,796	6,812,560	79,312,693
13 Net Gen (MWH)	602,807	602,807	583,362	602,807	603,018	623,119	7,196,506
14 ANOHR (Btu/KWH)	11,085	11,085	11,085	11,085	10,933	10,933	11,021
15 NOF (%)	97.5	97.5	97.5	97.5	100.8	100.8	98.9
16 NSC (MW)	831	831	831	831	831	831	831
17 ANOHR Equation	-46.05 x NOF + 15575						

ESTIMATED UNIT PERFORMANCE DATA

FLORIDA POWER & LIGHT

PERIOD OF: JANUARY THROUGH DECEMBER, 2019

Turkey Point 4	Jan '19	Feb '19	Mar '19	Apr '19	May '19	Jun '19
1 EAF (%)	92.7	92.7	29.9	18.5	92.7	92.7
2 EPOF (%)	0.0	0.0	67.7	80.0	0.0	0.0
3 EUOF (%)	7.3	7.3	2.4	1.5	7.3	7.3
4 EUOR (%)	7.3	7.3	7.3	7.3	7.3	7.3
5 PH	744	672	744	720	744	720
6 SH	744	672	240	144	744	720
7 RSH	0	0	0	0	0	0
8 UH	0	0	504	576	0	0
9 POH	0	0	504	576	0	0
10 FOH & EFOH	27	25	9	5	27	26
11 MOH & EMOH	27	25	9	5	27	26
12 Oper Mbtu	6,739,865	6,087,620	2,174,150	1,297,891	6,705,791	6,489,479
13 Net Gen (MWH)	615,288	555,744	198,480	118,076	610,061	590,382
14 ANOHR (Btu/KWH)	10,954	10,954	10,954	10,992	10,992	10,992
15 NOF (%)	98.3	98.3	98.3	97.5	97.5	97.5
16 NSC (MW)	841	841	841	841	841	841
17 ANOHR Equation	-48.13 x NOF + 15685					

Turkey Point 4	Jul '19	Aug '19	Sep '19	Oct '19	Nov '19	Dec '19	Total
1 EAF (%)	92.7	92.7	92.7	92.7	92.7	92.7	81.3
2 EPOF (%)	0.0	0.0	0.0	0.0	0.0	0.0	12.3
3 EUOF (%)	7.3	7.3	7.3	7.3	7.3	7.3	6.4
4 EUOR (%)	7.3	7.3	7.3	7.3	7.3	7.3	7.3
5 PH	744	744	720	744	720	744	8,760
6 SH	744	744	720	744	720	744	7,680
7 RSH	0	0	0	0	0	0	0
8 UH	0	0	0	0	0	0	1,080
9 POH	0	0	0	0	0	0	1,080
10 FOH & EFOH	27	27	26	27	26	27	280
11 MOH & EMOH	27	27	26	27	26	27	280
12 Oper Mbtu	6,705,791	6,705,791	6,489,479	6,705,791	6,607,030	6,827,262	69,531,380
13 Net Gen (MWH)	610,061	610,061	590,382	610,061	609,336	629,647	6,347,579
14 ANOHR (Btu/KWH)	10,992	10,992	10,992	10,992	10,843	10,843	10,954
15 NOF (%)	97.5	97.5	97.5	97.5	100.6	100.6	98.3
16 NSC (MW)	841	841	841	841	841	841	841
17 ANOHR Equation	-48.13 x NOF + 15685						

ESTIMATED UNIT PERFORMANCE DATA

FLORIDA POWER & LIGHT

PERIOD OF: JANUARY THROUGH DECEMBER, 2019

West County 1	Jan '19	Feb '19	Mar '19	Apr '19	May '19	Jun '19
1 EAF (%)	91.4	91.4	91.4	91.4	91.4	91.4
2 EPOF (%)	0.0	0.0	0.0	0.0	0.0	0.0
3 EUOF (%)	8.6	8.6	8.6	8.6	8.6	8.6
4 EUOR (%)	8.6	8.6	8.6	8.6	8.6	8.6
5 PH	744	672	744	720	744	720
6 SH	744	672	744	720	744	720
7 RSH	0	0	0	0	0	0
8 UH	0	0	0	0	0	0
9 POH	0	0	0	0	0	0
10 FOH & EFOH	16	14	16	15	16	15
11 MOH & EMOH	48	44	48	47	48	47
12 Oper Mbtu	5,219,622	4,638,651	4,990,317	5,184,121	5,090,315	4,543,802
13 Net Gen (MWH)	751,782	666,952	715,150	748,934	731,157	647,173
14 ANOHR (Btu/KWH)	6,943	6,955	6,978	6,922	6,962	7,021
15 NOF (%)	88.2	86.7	83.9	90.8	85.8	78.5
16 NSC (MW)	1,145	1,145	1,145	1,145	1,145	1,145
17 ANOHR Equation	-8.05 x NOF + 7653					

West County 1	Jul '19	Aug '19	Sep '19	Oct '19	Nov '19	Dec '19	Total
1 EAF (%)	91.4	91.4	91.4	91.4	51.8	82.6	87.4
2 EPOF (%)	0.0	0.0	0.0	0.0	43.3	9.7	4.4
3 EUOF (%)	8.6	8.6	8.6	8.6	4.9	7.7	8.2
4 EUOR (%)	8.6	8.6	8.6	8.6	7.3	7.7	8.4
5 PH	744	744	720	744	720	744	8,760
6 SH	744	744	720	744	478	744	8,518
7 RSH	0	0	0	0	2	0	2
8 UH	0	0	0	0	240	0	240
9 POH	0	0	0	0	240	0	240
10 FOH & EFOH	16	16	15	16	9	14	175
11 MOH & EMOH	48	48	47	48	26	44	543
12 Oper Mbtu	4,417,436	4,296,762	4,968,687	4,349,810	2,515,116	4,145,260	54,408,226
13 Net Gen (MWH)	625,522	606,973	714,405	615,075	352,504	583,675	7,759,302
14 ANOHR (Btu/KWH)	7,062	7,079	6,955	7,072	7,135	7,102	7,012
15 NOF (%)	73.4	71.3	86.7	72.2	64.4	68.5	79.6
16 NSC (MW)	1,145	1,145	1,145	1,145	1,145	1,145	1,145
17 ANOHR Equation	-8.05 x NOF + 7653						

ESTIMATED UNIT PERFORMANCE DATA

FLORIDA POWER & LIGHT

PERIOD OF: JANUARY THROUGH DECEMBER, 2019

West County 2	Jan '19	Feb '19	Mar '19	Apr '19	May '19	Jun '19
1 EAF (%)	92.0	92.0	92.0	9.2	83.1	92.0
2 EPOF (%)	0.0	0.0	0.0	90.0	9.7	0.0
3 EUOF (%)	8.0	8.0	8.0	0.8	7.2	8.0
4 EUOR (%)	8.0	8.0	8.0	6.0	7.2	8.0
5 PH	744	672	744	720	744	720
6 SH	744	672	744	96	744	720
7 RSH	0	0	0	456	0	0
8 UH	0	0	0	168	0	0
9 POH	0	0	0	168	0	0
10 FOH & EFOH	16	15	16	2	15	16
11 MOH & EMOH	43	39	43	4	39	42
12 Oper Mbtu	4,690,528	4,324,243	4,858,526	233,794	3,940,258	3,796,426
13 Net Gen (MWH)	680,181	628,615	707,621	31,731	560,811	540,109
14 ANOHR (Btu/KWH)	6,896	6,879	6,866	7,368	7,026	7,029
15 NOF (%)	85.4	87.3	88.8	30.9	70.4	70.0
16 NSC (MW)	1,071	1,071	1,071	1,071	1,071	1,071
17 ANOHR Equation	-8.67 x NOF + 7636					

West County 2	Jul '19	Aug '19	Sep '19	Oct '19	Nov '19	Dec '19	Total
1 EAF (%)	92.0	92.0	92.0	92.0	92.0	92.0	84.5
2 EPOF (%)	0.0	0.0	0.0	0.0	0.0	0.0	8.2
3 EUOF (%)	8.0	8.0	8.0	8.0	8.0	8.0	7.3
4 EUOR (%)	8.0	8.0	8.0	8.0	8.0	8.0	7.9
5 PH	744	744	720	744	720	744	8,760
6 SH	744	744	720	744	720	744	8,136
7 RSH	0	0	0	0	0	0	456
8 UH	0	0	0	0	0	0	168
9 POH	0	0	0	0	0	0	168
10 FOH & EFOH	16	16	16	16	16	16	175
11 MOH & EMOH	43	43	42	43	42	43	464
12 Oper Mbtu	3,830,881	4,457,948	4,881,482	4,304,694	4,340,520	4,451,698	48,177,359
13 Net Gen (MWH)	543,773	642,726	714,398	618,224	626,157	641,640	6,935,986
14 ANOHR (Btu/KWH)	7,045	6,936	6,833	6,963	6,932	6,938	6,946
15 NOF (%)	68.2	80.7	92.6	77.6	81.2	80.5	79.6
16 NSC (MW)	1,071	1,071	1,071	1,071	1,071	1,071	1,071
17 ANOHR Equation	-8.67 x NOF + 7636						

ESTIMATED UNIT PERFORMANCE DATA

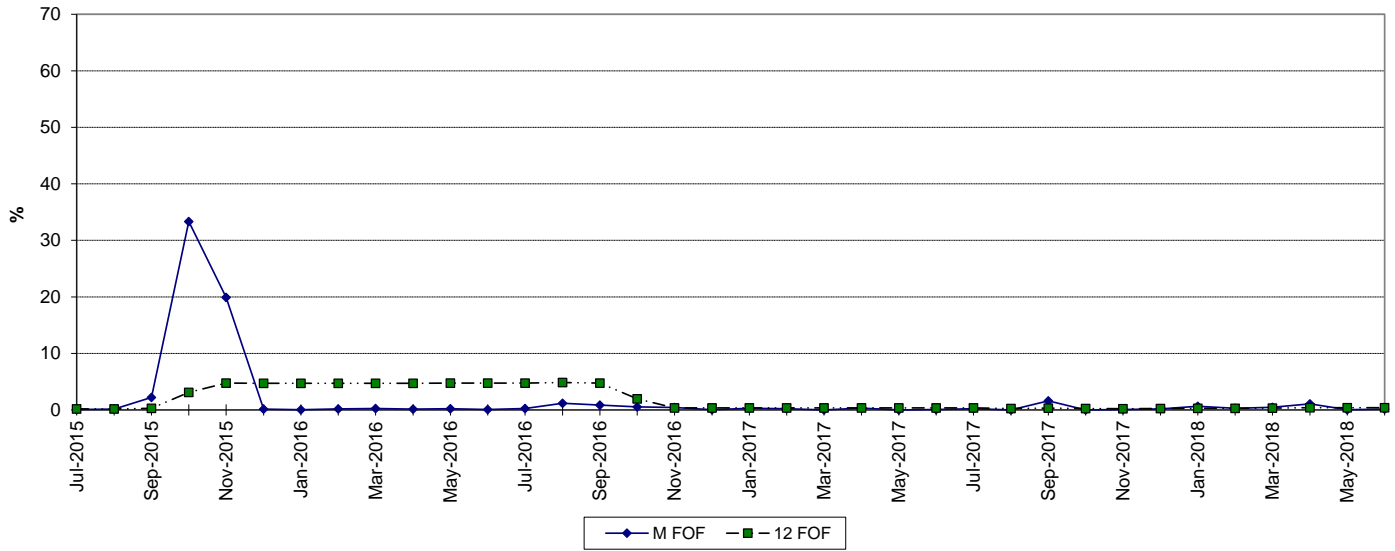
FLORIDA POWER & LIGHT

PERIOD OF: JANUARY THROUGH DECEMBER, 2019

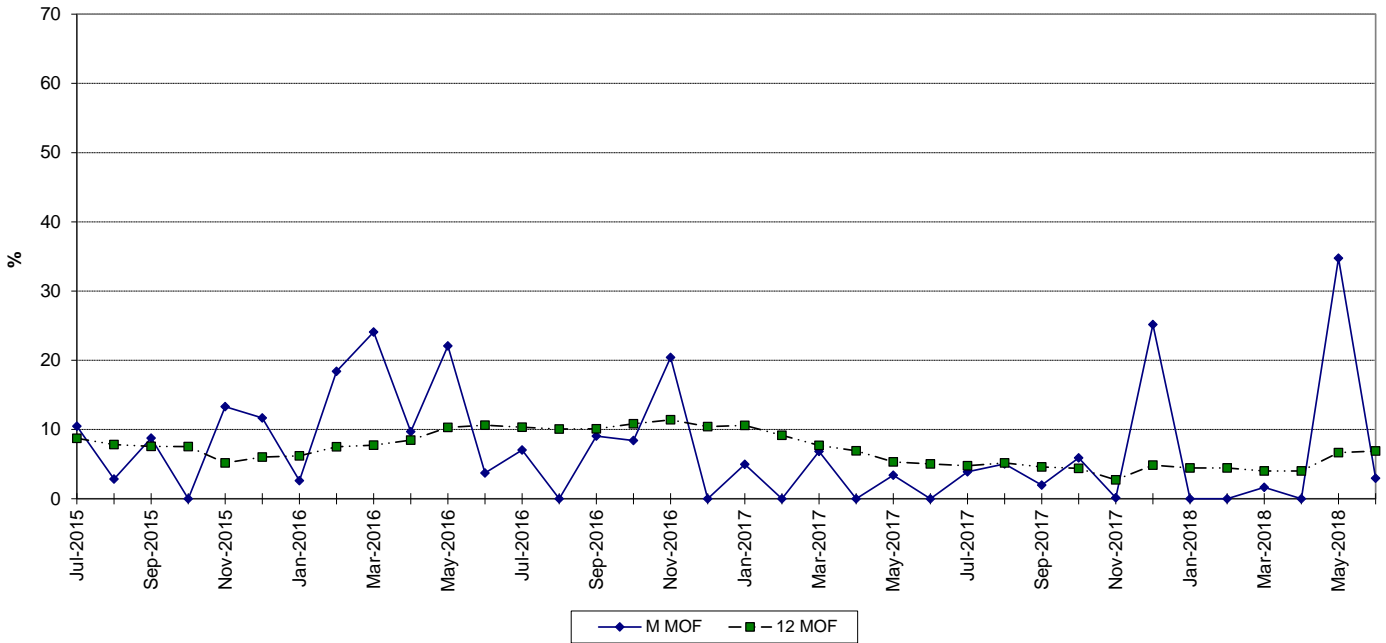
West County 3	Jan '19	Feb '19	Mar '19	Apr '19	May '19	Jun '19
1 EAF (%)	90.8	71.4	61.5	90.8	90.8	90.8
2 EPOF (%)	0.0	21.4	32.3	0.0	0.0	0.0
3 EUOF (%)	9.2	7.2	6.2	9.2	9.2	9.2
4 EUOR (%)	9.2	8.1	8.1	9.2	9.2	9.2
5 PH	744	672	744	720	744	720
6 SH	744	600	576	720	744	720
7 RSH	0	0	0	0	0	0
8 UH	0	72	168	0	0	0
9 POH	0	72	168	0	0	0
10 FOH & EFOH	16	11	11	15	16	15
11 MOH & EMOH	53	38	36	51	53	51
12 Oper Mbtu	4,970,883	3,560,544	3,468,042	5,182,783	5,192,359	4,967,726
13 Net Gen (MWH)	712,365	507,996	495,081	745,081	745,493	712,832
14 ANOHR (Btu/KWH)	6,978	7,009	7,005	6,956	6,965	6,969
15 NOF (%)	85.4	75.5	76.7	92.3	89.4	88.3
16 NSC (MW)	1,121	1,121	1,121	1,121	1,121	1,121
17 ANOHR Equation	-3.13 x NOF + 7245					

West County 3	Jul '19	Aug '19	Sep '19	Oct '19	Nov '19	Dec '19	Total
1 EAF (%)	90.8	90.8	90.8	90.8	90.8	90.8	86.8
2 EPOF (%)	0.0	0.0	0.0	0.0	0.0	0.0	4.4
3 EUOF (%)	9.2	9.2	9.2	9.2	9.2	9.2	8.8
4 EUOR (%)	9.2	9.2	9.2	9.2	9.2	9.2	9.0
5 PH	744	744	720	744	720	744	8,760
6 SH	744	744	720	744	720	744	8,520
7 RSH	0	0	0	0	0	0	0
8 UH	0	0	0	0	0	0	240
9 POH	0	0	0	0	0	0	240
10 FOH & EFOH	16	16	15	16	15	16	175
11 MOH & EMOH	53	53	51	53	51	53	596
12 Oper Mbtu	5,066,852	4,848,275	5,195,837	4,451,879	4,573,799	4,557,511	56,047,398
13 Net Gen (MWH)	726,743	694,098	747,065	635,438	654,241	650,980	8,027,413
14 ANOHR (Btu/KWH)	6,972	6,985	6,955	7,006	6,991	7,001	6,982
15 NOF (%)	87.1	83.2	92.6	76.2	81.1	78.1	84.0
16 NSC (MW)	1,121	1,121	1,121	1,121	1,121	1,121	1,121
17 ANOHR Equation	-3.13 x NOF + 7245						

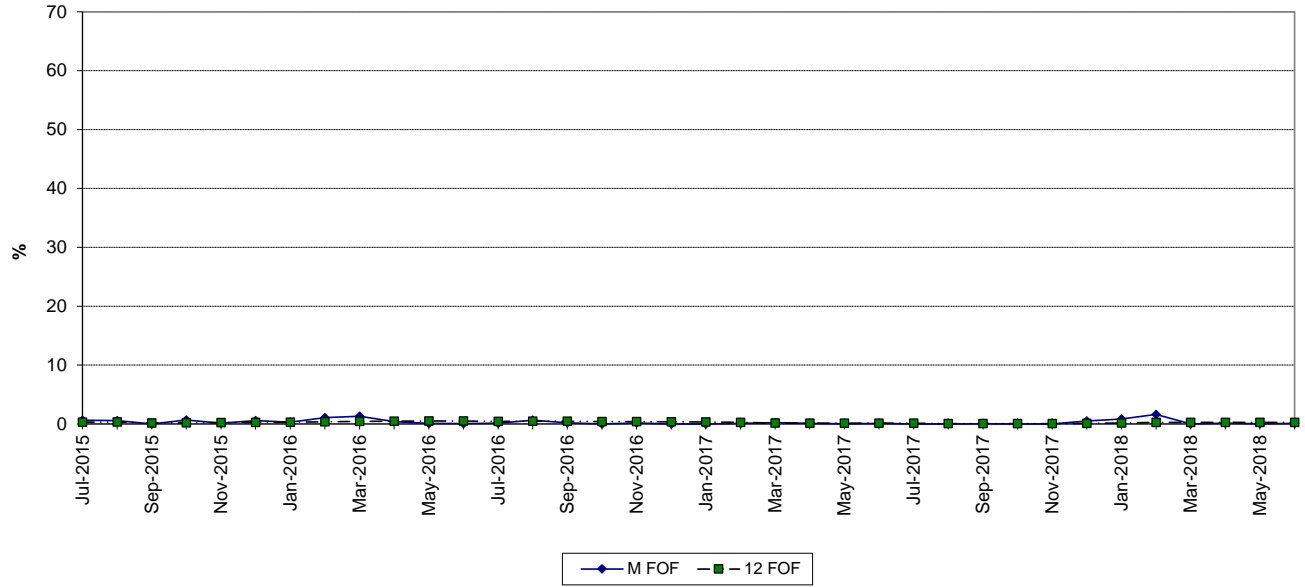
CAPE CANAVERAL 3 FORCED OUTAGE FACTOR



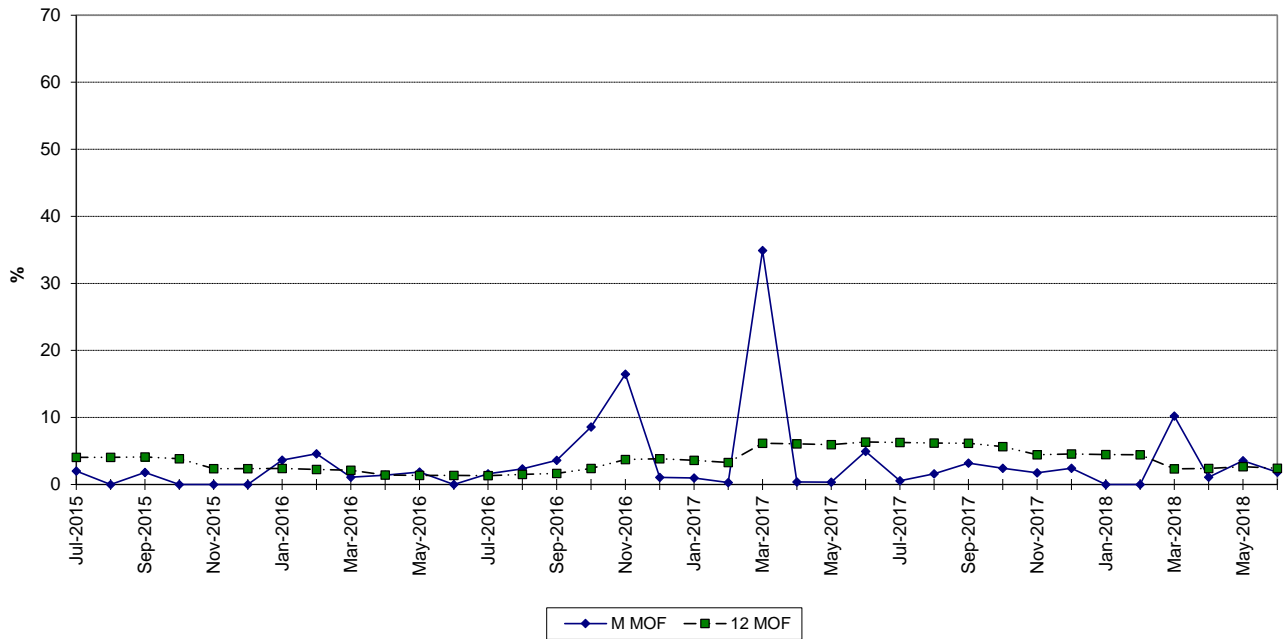
MAINTENANCE OUTAGE FACTOR



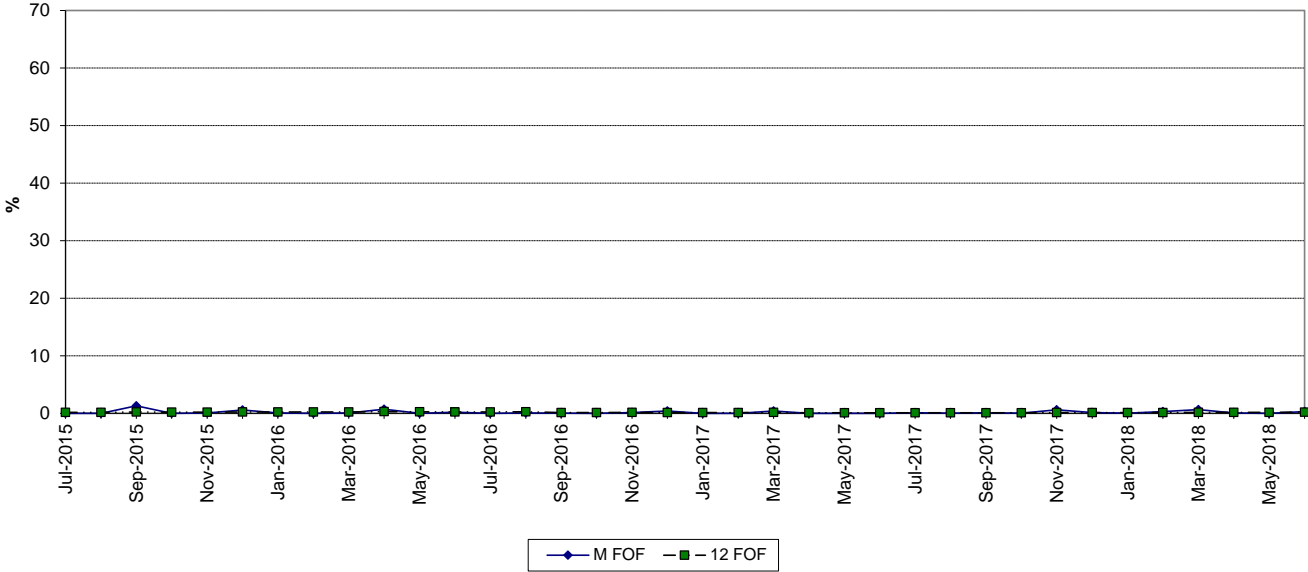
FT. MYERS 2 FORCED OUTAGE FACTOR



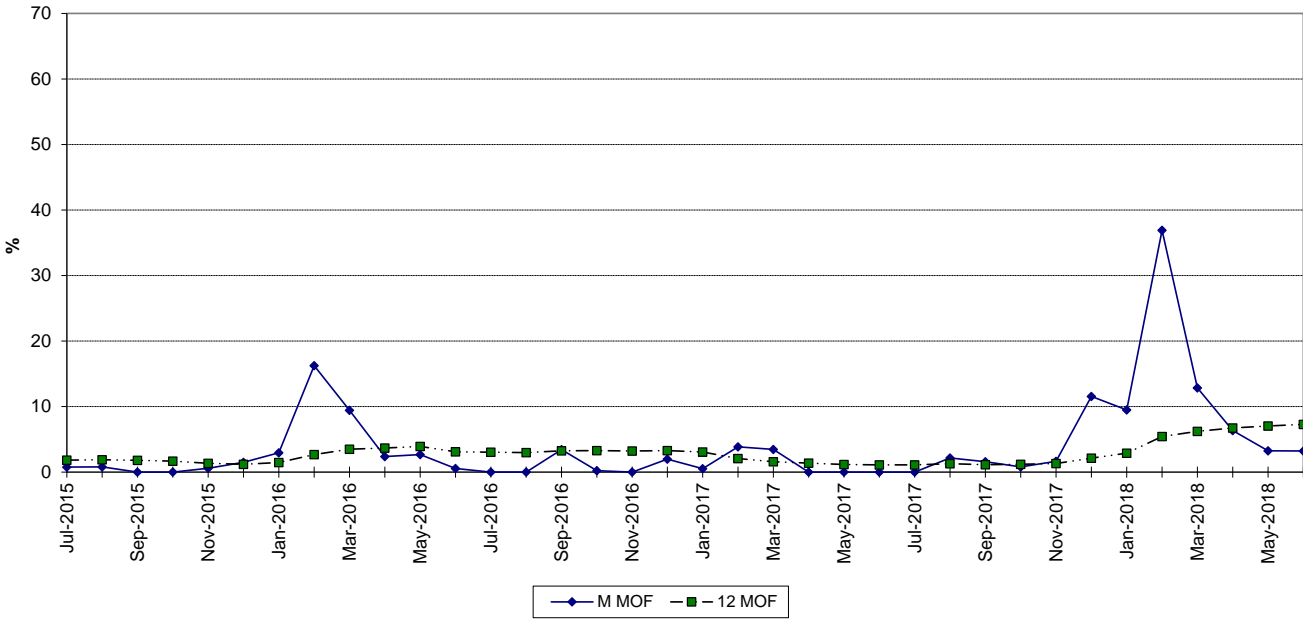
MAINTENANCE OUTAGE FACTOR



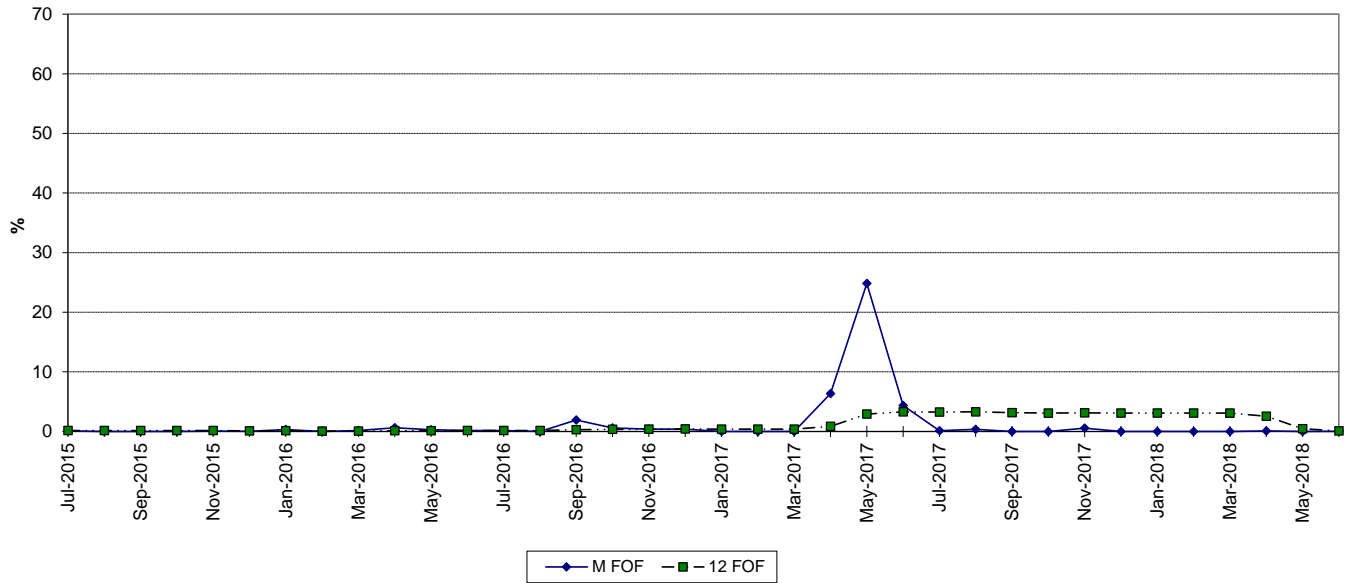
MANATEE 3 FORCED OUTAGE FACTOR



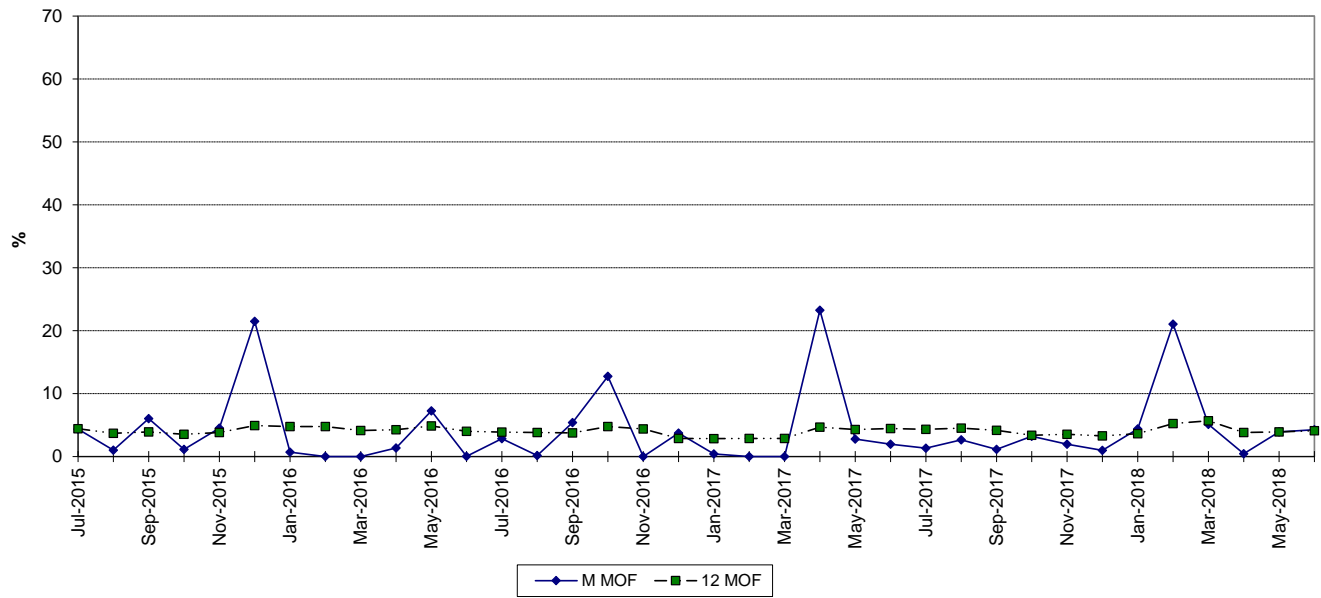
MAINTENANCE OUTAGE FACTOR



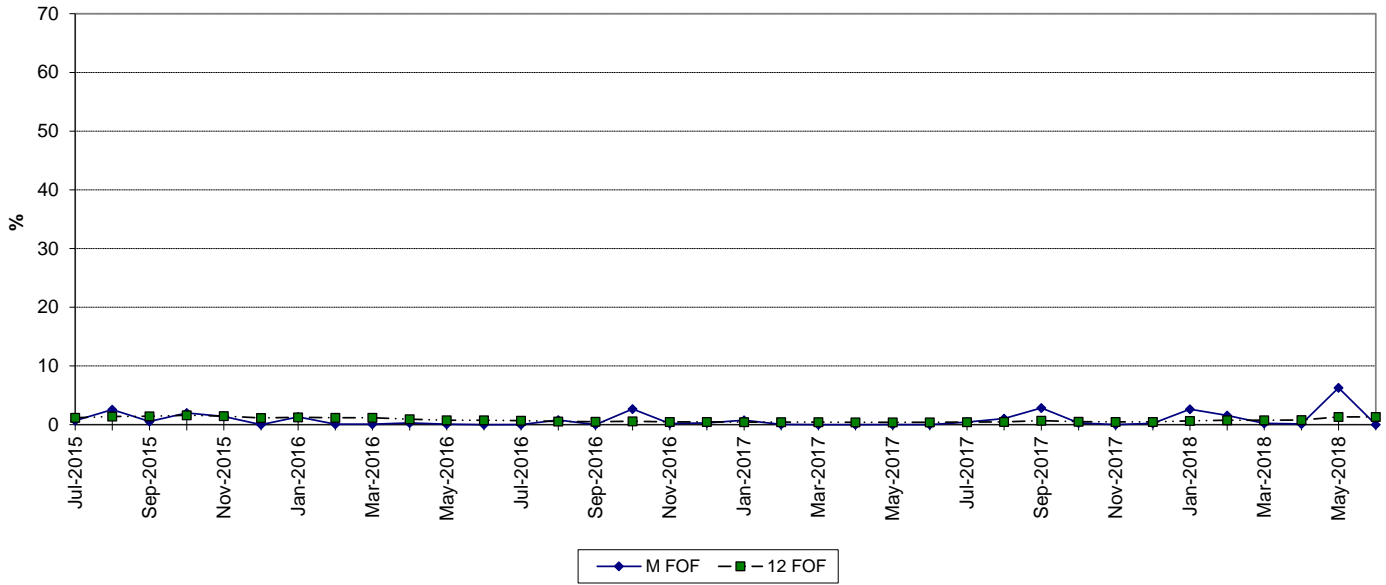
MARTIN 8 FORCED OUTAGE FACTOR



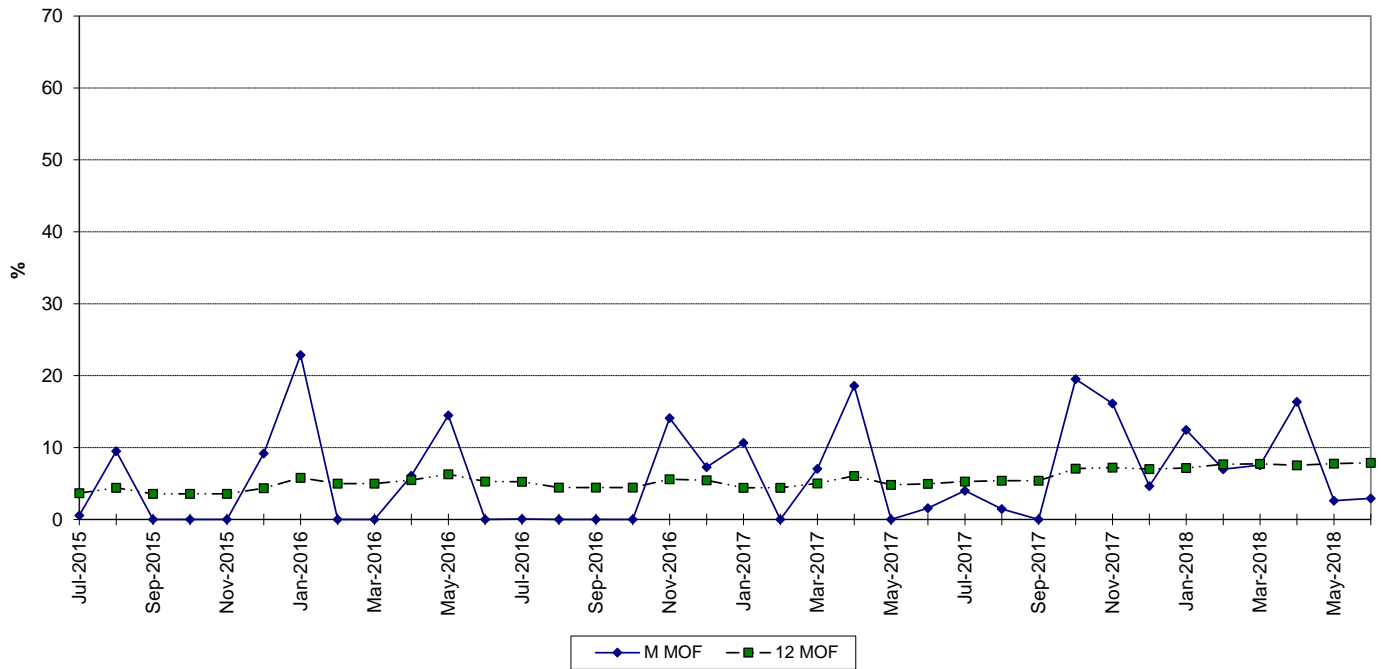
MAINTENANCE OUTAGE FACTOR



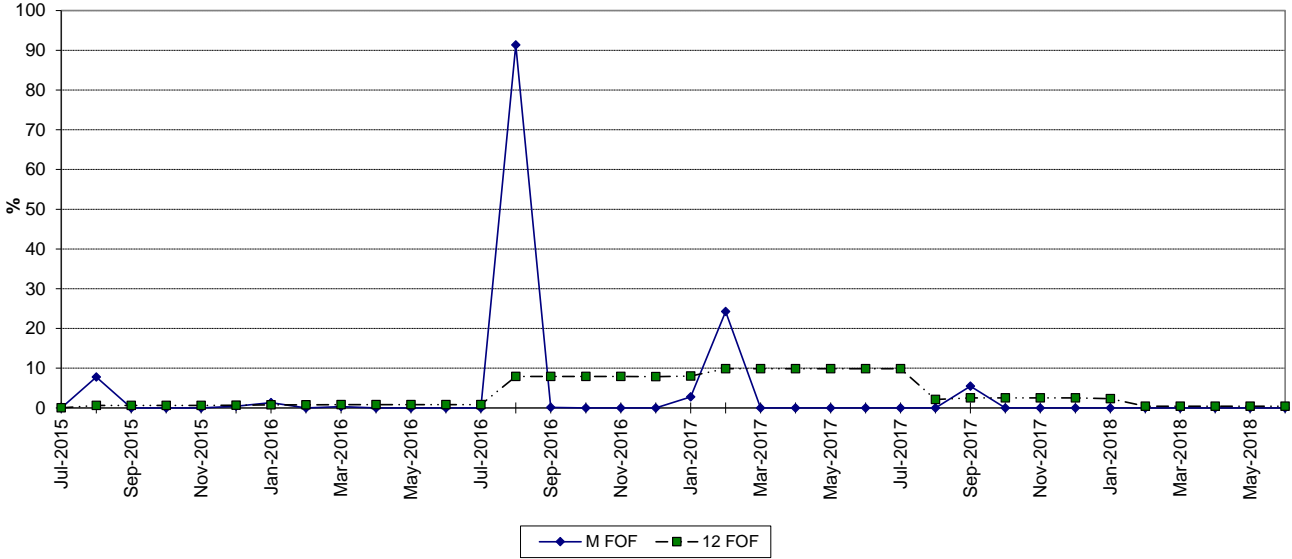
RIVIERA 5 FORCED OUTAGE FACTOR



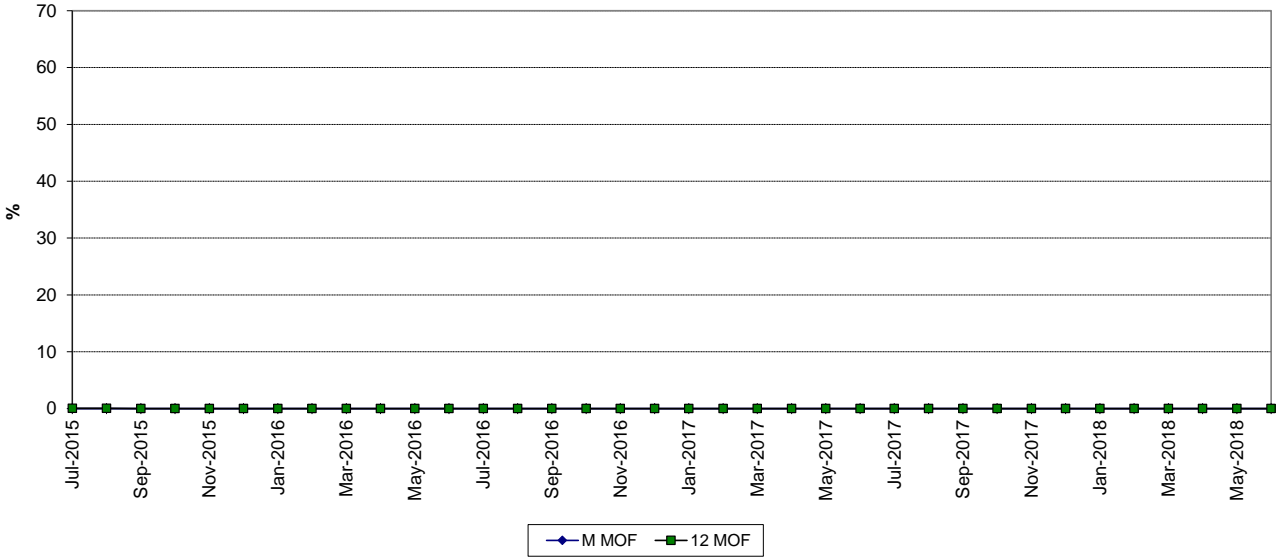
MAINTENANCE OUTAGE FACTOR



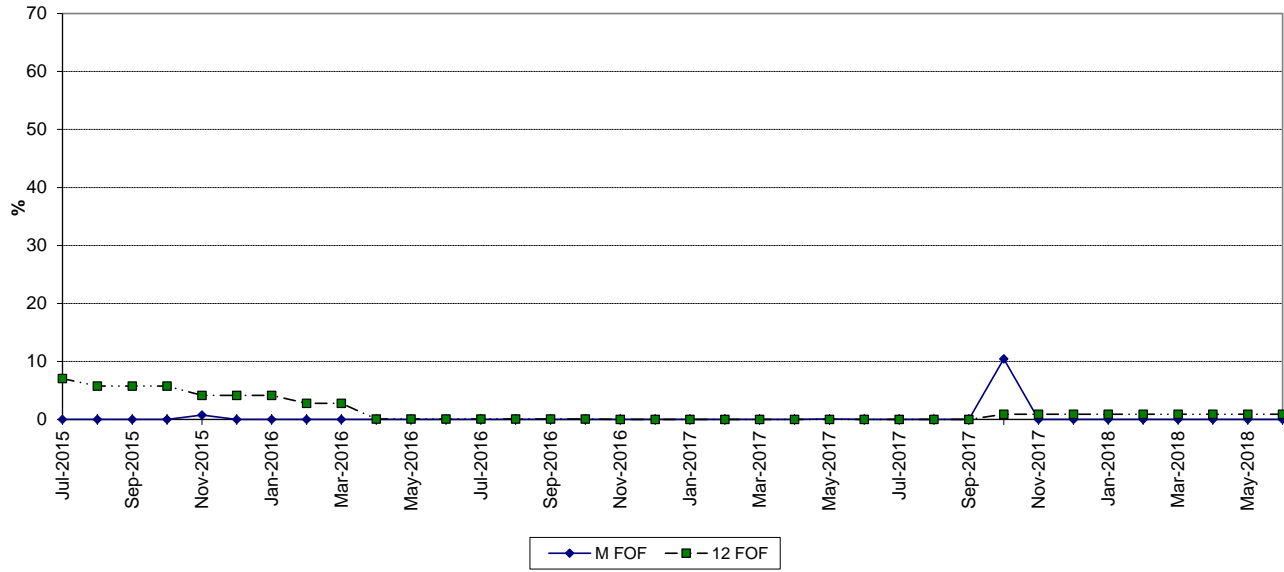
ST. LUCIE 1 FORCED OUTAGE FACTOR



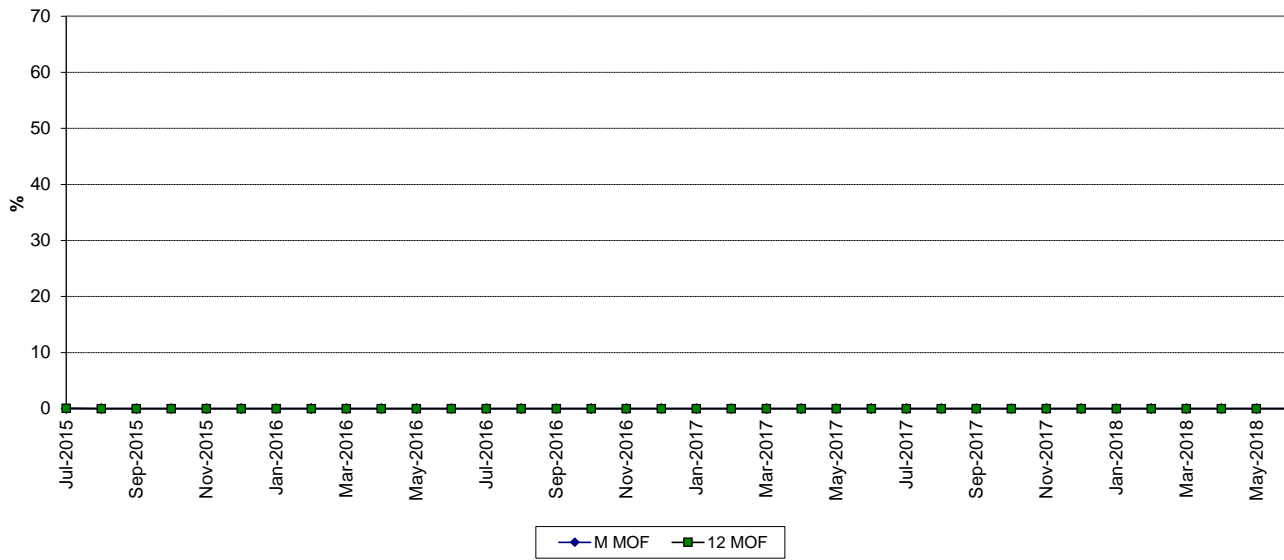
MAINTENANCE OUTAGE FACTOR



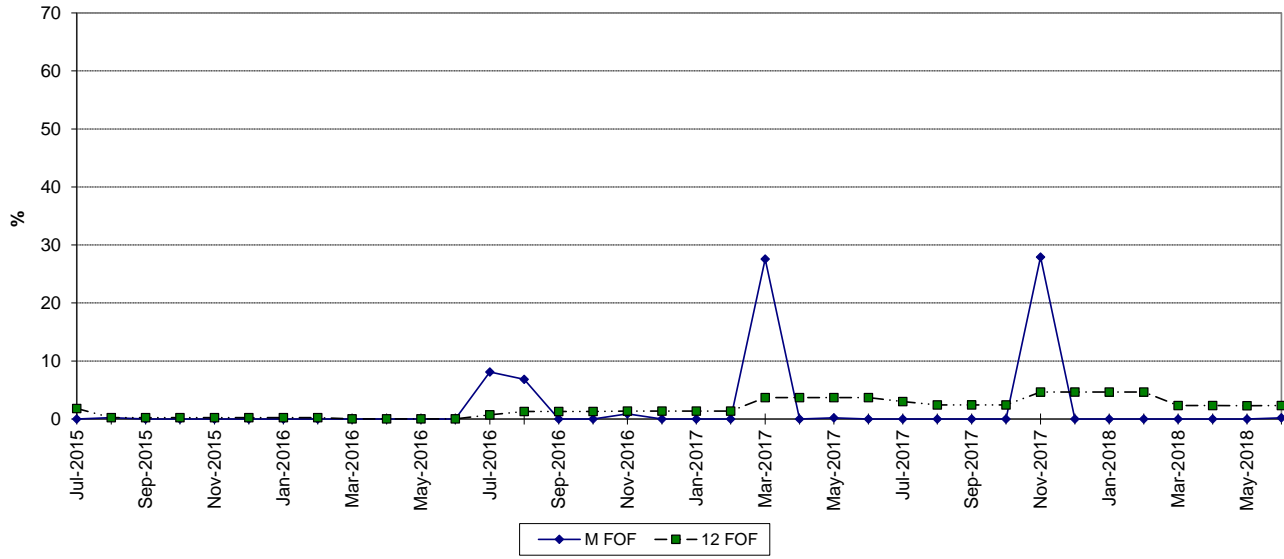
ST. LUCIE 2 FORCED OUTAGE FACTOR



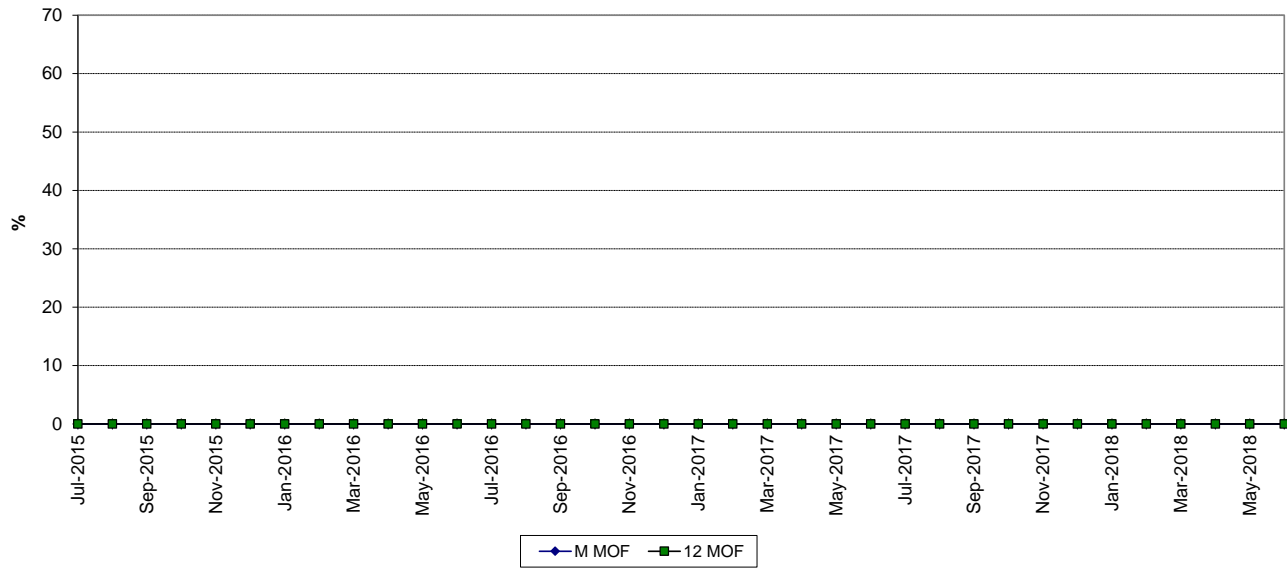
MAINTENANCE OUTAGE FACTOR



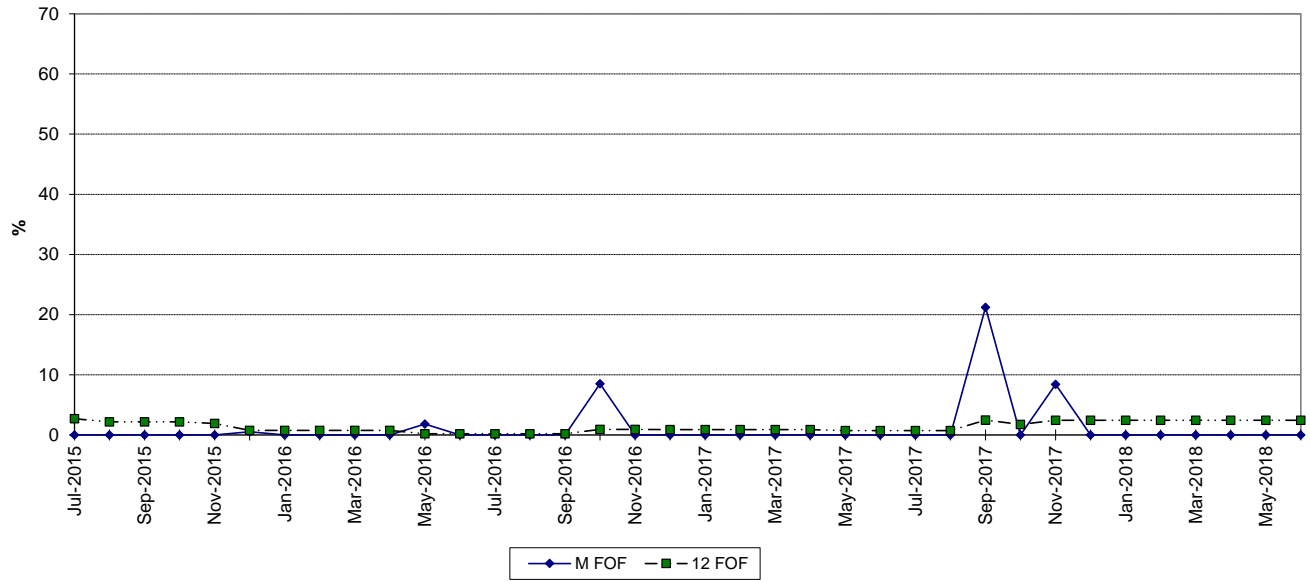
TURKEY POINT 3 FORCED OUTAGE FACTOR



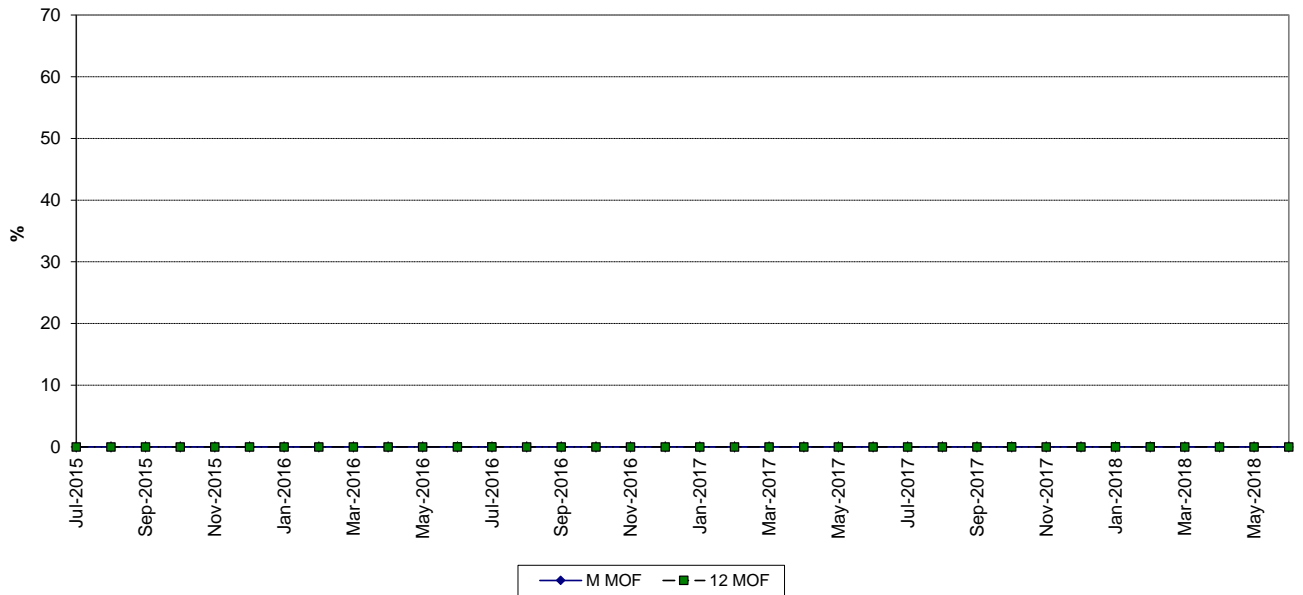
MAINTENANCE OUTAGE FACTOR



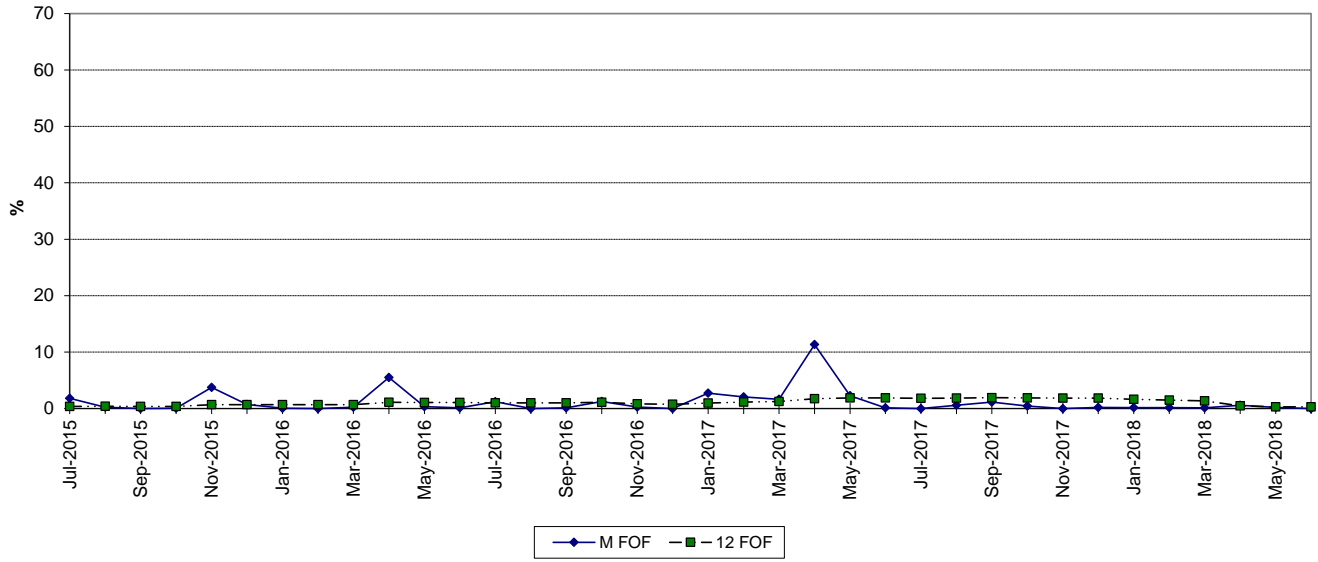
TURKEY POINT 4 FORCED OUTAGE FACTOR



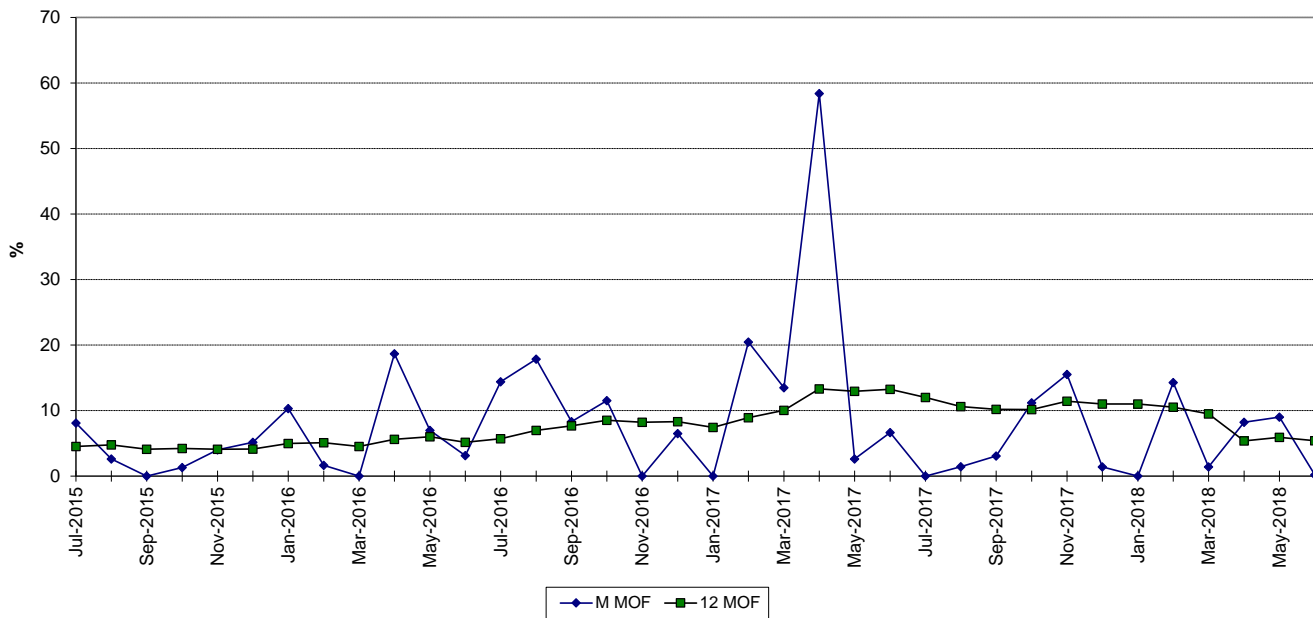
MAINTENANCE OUTAGE FACTOR



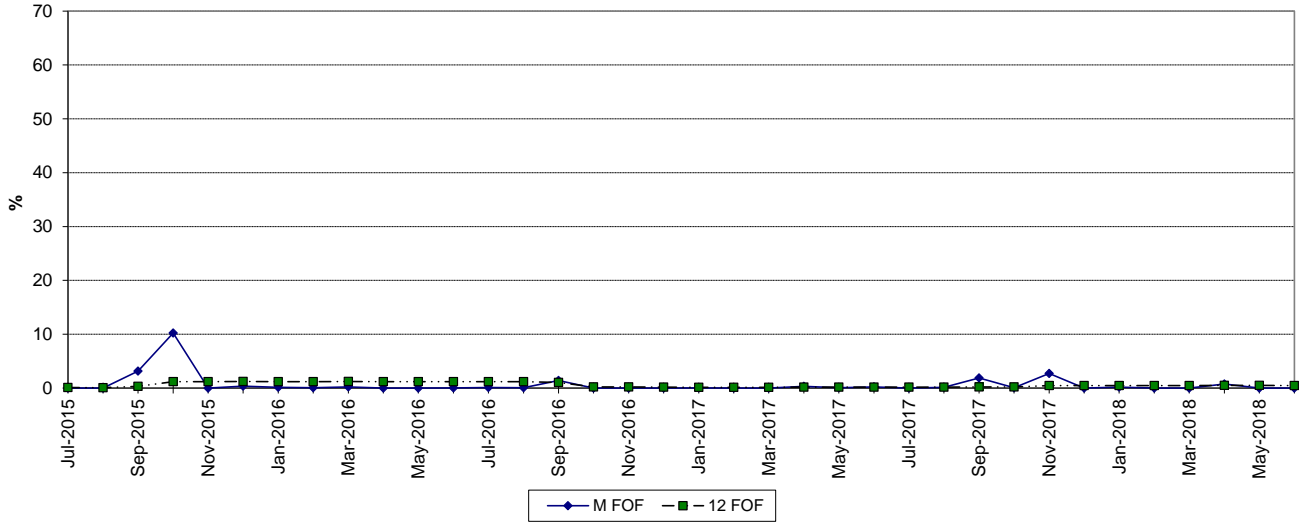
WEST COUNTY 1 FORCED OUTAGE FACTOR



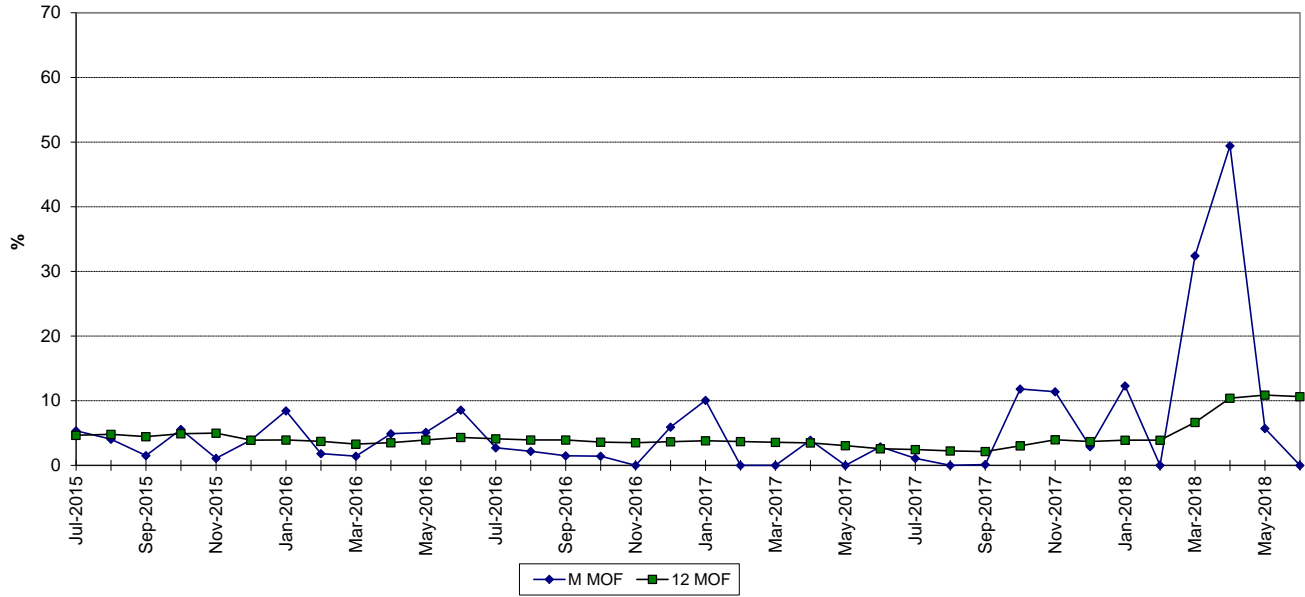
MAINTENANCE OUTAGE FACTOR



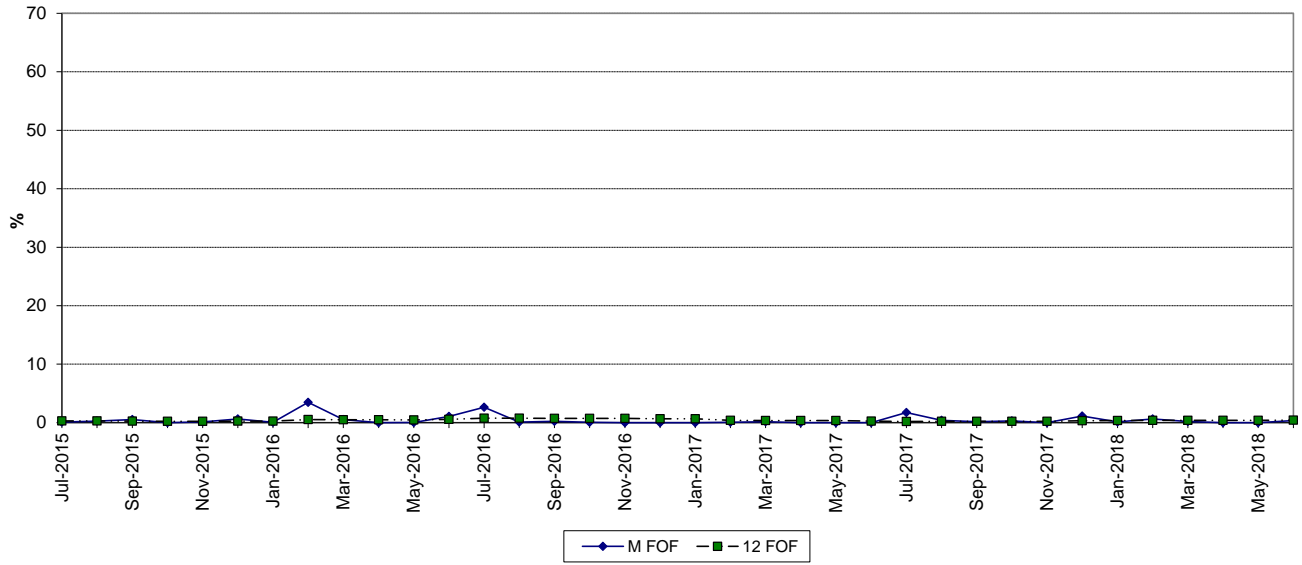
WEST COUNTY 2 FORCED OUTAGE FACTOR



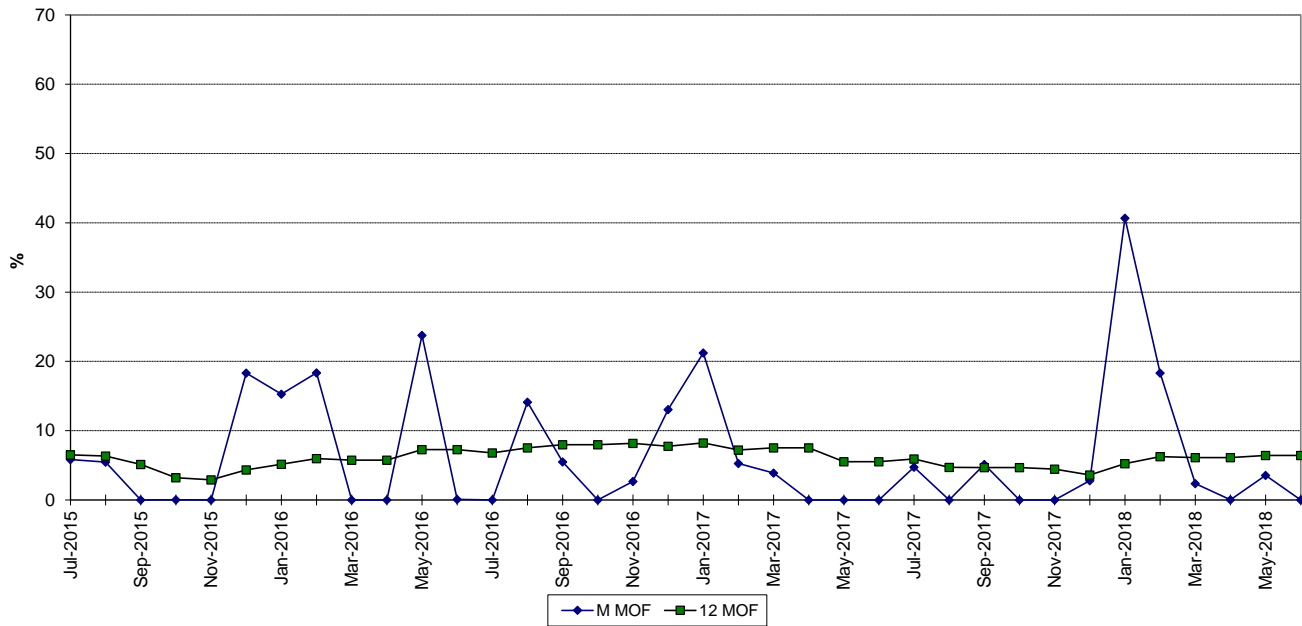
MAINTENANCE OUTAGE FACTOR



WEST COUNTY 3 FORCED OUTAGE FACTOR



MAINTENANCE OUTAGE FACTOR



PLANNED OUTAGE SCHEDULE (ESTIMATED)

FLORIDA POWER & LIGHT COMPANY

PERIOD OF: JANUARY THROUGH DECEMBER, 2019

PLANT/UNIT	PLAN OUTAGE	REASON FOR OUTAGE	LR MW*
Cape Canaveral 3	03/10/2019 - 04/06/2019	CT 33 HRSG INSPECTION - 33% CURT.	414
Cape Canaveral 3	04/26/2019 - 05/09/2019	CT 32 HRSG INSPECTION- 33% CURT.	400
Cape Canaveral 3	05/10/2019 - 06/06/2019	CT 31 HRSG INSPECTION - 33% CURT.	400
Cape Canaveral 3	10/28/2019 - 11/24/2019	ST VALVES / GEN INSP - 100% CURT.	1,201
Ft. Myers 2	01/04/2019 - 03/04/2019	ST1 LP UPGRADE / BREAKER INSPECTION	63
Ft. Myers 2	01/25/2019 - 03/20/2019	CT C&F MAJOR / 3SAR UPG.	385
Ft. Myers 2	03/04/2019 - 05/04/2019	ST2 HP/IP UPGRADE / BREAKER INSPECTION / HRSG B&D INSP.	486
Ft. Myers 2	03/26/2019 - 05/19/2019	CT A&E MAJOR / 3SAR UPG.	385
Manatee 3	10/03/2019 - 10/09/2019	CT C&D HGP / GEN MINOR / HRSG INSP- 50% CURT.	598
Manatee 3	10/10/2019 - 10/16/2019	BALANCE OF PLANT INSP., CT A&B HGP / GEN MINOR / HRSG INSP - 100% CURT.	1,195
Riviera 5	02/16/2019 - 04/01/2019	CT 51 MAJOR - 33% CURT.	410
Riviera 5	05/10/2019 - 05/19/2019	CT 52 HRSG INSPECTION - 33% CURT	396
Riviera 5	05/22/2019 - 05/31/2019	CT 53 HRSG INSPECTION - 33% CURT	396
St. Lucie 1	09/02/2019 - 10/02/2019	REFUELING	981
St. Lucie 2	NONE		
Turkey Point 3	NONE		
Turkey Point 4	03/11/2019 - 04/25/2019	REFUELING	848
West County 1	11/15/2019 - 11/30/2019	CT A HRSG INSP - 33% CURT.	389
West County 1	11/18/2019 - 12/03/2019	CT B HRSG INSP - 33% CURT.	389
West County 1	11/21/2019 - 12/06/2019	CT C HRSG INSP - 33% CURT.	389
West County 1	11/21/2019 - 11/30/2019	BOP INSP - 100% CURT.	1,179
West County 2	04/01/2019 - 04/30/2019	CT A HGP / GEN MAJ / HRSG INSP - 33% CURT.	353
West County 2	04/04/2019 - 05/03/2019	CT B HGP / GEN MAJ / HRSG INSP - 33% CURT.	353
West County 2	04/07/2019 - 05/06/2019	CT C HGP / GEN MAJ / HRSG INSP - 33% CURT.	353
West County 2	04/07/2019 - 04/13/2019	BOP INSP - 100% CURT.	1,071
West County 3	02/20/2019 - 03/07/2019	CT A HRSG INSP - 33% CURT.	380
West County 3	02/23/2019 - 03/10/2019	CT B HRSG INSP - 33% CURT.	380
West County 3	02/26/2019 - 03/13/2019	CT C HRSG INSP - 33% CURT.	380
West County 3	02/26/2019 - 03/07/2019	BOP INSP - 100% CURT.	1,153

*Approximate load reduction MW are based on the unit's estimated MW rating at the start of the outage period