

# GATOR WATERWORKS, INC.

July 6, 2021

FILED 7/6/2021  
DOCUMENT NO. 07459-2021  
FPSC - COMMISSION CLERK

Office of Commission Clerk  
Public Service Commission  
2540 Shumard Oak Blvd.  
Tallahassee, FL 32399

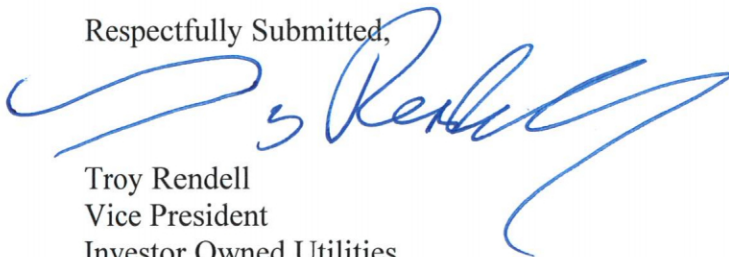
*Re: Docket No. 20190114-WU – Application for staff assisted rate case by Gator Waterworks, Inc. in Alachua County – Fourth and Final Quarterly Report*

Dear Commission Clerk,

Pursuant to Order No. PSC-2020-0086-PAA-WU, issued March 24, 2020 Gator Waterworks, Inc. (Gator) hereby submits its Fourth and Final Quarterly Report.

	<u>Bills</u>	<u>Consumption (000s)</u>	<u>Revenue</u>
April-21	331	1,314	\$ 13,814.27
May-21	333	1,405	\$ 14,802.84
June-21	333	1,607	\$ 17,253.06

Respectfully Submitted,



Troy Rendell  
Vice President  
Investor Owned Utilities  
*//For Gator Utility Company, Inc.*



Gainesville Regional Utilities  
301 S.E. 4 Avenue  
Gainesville FL 32601

Account: 2000-6431-6930  
Bill Date: 06/02/2021

GATOR WATER WORKS  
3260 SE 19TH AVE  
GAINESVILLE FL 32641

708001654538  
ROUTE: 010065  
NRES

Cash Security Deposit on File is \$0.00

**SUMMARY OF SERVICES**

**UTILITIES** (See reverse for details about your utility charges.)

Electric \$580.80  
Total Utility Charge \$580.80

**TAXES AND SURCHARGES**

Florida Gross Receipts Tax \$16.13  
County Utility Tax \$53.37  
Sales Tax \$51.31  
Surcharges \$48.41  
Total Taxes and Surcharges \$169.22

**TOTAL CURRENT MONTH CHARGES \$750.02**

**PREVIOUS BILL ACTIVITY**

Previous Balance \$663.34  
Payment Amount (Date: 05/24/2021) -\$663.34  
BALANCE FORWARD \$0.00

**ACCOUNT SUMMARY**

Current Month Charges: \$750.02  
Adjustments & Service Charges: \$0.00  
Balance Forward: \$0.00

**EFT PAYMENT DUE \$750.02 DUE BY 06/23/2021**

A 1.5% late fee will be charged for new charges not paid by 7 P.M. on your due date. Service disconnection may result from past due balances.

**AVERAGE DAILY CONSUMPTION**

Service	Meter	This Month	Last Month	Last Year
DEMAND	E078070729	13.00	17.00	12.00
ELECTRIC	E078070729	132.86	112.30	135.90
AVERAGE TEMPERATURE (High/Low)		84/58	78/55	84/61
MONTHLY RAINFALL (Inches)		0.94	5.63	1.63

**MESSAGES**

THANK YOU FOR YOUR PAYMENT

View GRU's annual water quality results at [www.gru.com/waterreport](http://www.gru.com/waterreport). The report contains important information about the source and quality of your drinking water. Your water met EPA drinking water standards. To receive a mailed copy, call 352-393-1600 or return your entire bill with this checked box [ ] marked.

Visit GRU Storm Central to learn how to prepare for a storm. Information about what to do before, during and after a storm is available at [gru.com/stormcentral](http://gru.com/stormcentral).

Have a qualified technician test, clean and adjust your air-conditioning equipment to increase efficiency and save money. This typically includes replacing dirty air filters and cleaning intake screens, condenser coils, supply registers and return grilles.

Entered: MR.  
COA Code: 6015  
Approved: [Signature]  
Paid: EFT 062421  
Date: 6/24/21

**SERVICE AGREEMENT:** Use or consumption of services rendered by this City shall constitute an agreement by the consumer with the City to abide by the rules of the City with regards to its utility service, including, but not limited to prevailing ordinances and policies of this City and its departments.

**\*RETURN THIS PAYMENT STUB FOR PROPER CREDIT\***



Gainesville Regional Utilities  
301 S.E. 4 Avenue  
Gainesville FL 32601

Account Number: 2000-6431-6930  
Total Payment Enclosed: \$ \_\_\_\_\_  
EFT PAYMENT DUE \$ 750.02

Sign up for eBill, GRU's free online paperless billing service, at [gru.com/ebill](http://gru.com/ebill)

**A bank draft will be processed on or after due date 06/23/2021.**

000065 000002845



GATOR WATER WORKS  
4939 CROSS BAYOU BLVD  
NEW PORT RICHEY FL 34652-3434



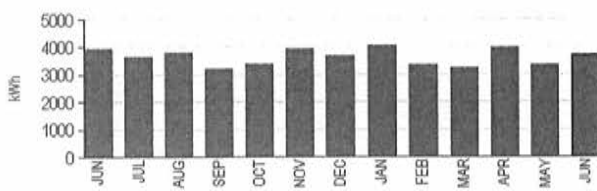
GAINESVILLE REGIONAL UTILITIES  
P.O. BOX 147051  
GAINESVILLE FL 32614-7051

200064316930 00 00000000 000075002

**ELECTRIC SERVICE DETAILS**

Meter Number	Meter Read Dates Previous Present	Meter Read Type	Days of Service	Meter Readings Previous Present	Meter Multiplier	Electric Consumption	Peak Demand	Next Meter Read on or About
E078070729	04/29/2021 05/26/2021	ACTUAL	28	10334 14054	1.00000	3,720 kWh	N/A	06/28/2021

Description	Usage	Rate	Amount Billed
ELECTRIC CUSTOMER CHARGE		\$31.00	\$31.00
ENERGY USE, TIER 1 (1 - 1500 kWh)	1,500	\$0.0984	\$147.60
ENERGY USE, TIER 2 (OVER 1500 kWh)	2,220	\$0.1309	\$290.60
ELECTRIC FUEL ADJUSTMENT	3,720	\$0.0300	\$111.60
ELECTRIC SURCHARGE			\$48.41
FLORIDA GROSS RECEIPTS TAX			\$16.13
COUNTY ELEC UTIL TAX			\$53.37
ELECTRIC STATE SALES TAX			\$44.85
ELECTRIC WILD SPACES SURTAX			\$3.23
ELECTRIC SCHOOL SURTAX			\$3.23
-- KINCAID WELL SITE			
<b>Total for Electric Service Details</b>			<b>\$750.02</b>



Pay Cash using the payment slip below at a local convenient location in your neighborhood. Check on-line for additional retail establishments.

**Customer Inquiries**

Customer Service	(352) 334-3434	Nationwide Toll-free Number	1-800-818-3436
Emergency or Outages	(352) 334-2871	Stormwater Service	(352) 334-5070
		Solid Waste Service	(352) 334-2330

**Payment Information**

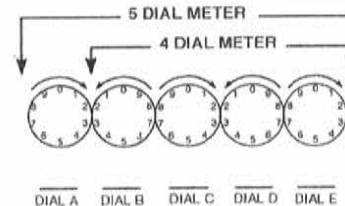
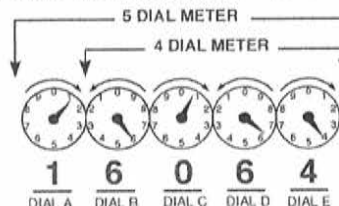
Make checks payable to GRU; return stub and check to: P.O. Box 147051, Gainesville, FL 32614-7051. You may also pay your bill online, by phone at 1-866-269-2881 or at a convenient location in your neighborhood. Visit [www.gru.com](http://www.gru.com) for details.

Lobby .....8 AM - 5 PM: M, T, Th, F and 9 AM - 5 PM: W  
 Drive-thru .....7:30 AM - 6 PM: M - F

Night depository payments will be posted the next business day if received after 3:30 p.m.

**HOW TO READ YOUR METER**

Read the dials from left to right (A-E). If the dial hand is between two numbers, use the lower number.



**PAY YOUR GRU BILL WITH CASH AT PARTICIPATING STORES**

Bring this barcode with you to make a payment. Payments are recognized immediately and posted same day.

**Retailer Instructions:**

1. SCAN the customer's barcode.
2. The register will PROMPT you to enter an amount.
3. ENTER the amount the customer wants to pay.
4. COLLECT the desired cash amount (and fee, if applicable).
5. When the transaction is COMPLETE hand customer the receipt.

799366003990006371683199546392

By accepting or using this barcode to make a payment, you agree to the full terms and conditions available at [vanilladirect.com/payterms](http://vanilladirect.com/payterms). After successful payment using this barcode, you may retrieve your full detailed e-receipt at [vanilladirect.com/pay/receipt](http://vanilladirect.com/pay/receipt). For Customer Assistance call 352-334-3434

present by  
**KUBRAEZPAY**

A \$1.50 fee will be added.

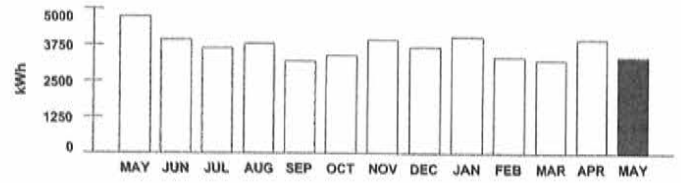
CVS pharmacy  
DOLLAR GENERAL  
ROYAL FARMS  
FAMILY BY DESIGN  
Kwik-Go  
Smart  
DISHNET  
Telephones  
DIAMETRE



**Electric Service Details**

Meter Number	METER READING DATES		Meter Read Type	Days of Service	METER READINGS		Meter Multiplier	Electric Consumption	Peak Demand	Next Meter Read on or About
	Previous	Present			Previous	Present				
078070729	03/30/2021	04/28/2021	ACTUAL	30	6965	10334	1.00000	3,369 kWh	N/A	05/26/2021

Description	Usage	Rate	Amount Billed
ELECTRIC CUSTOMER CHARGE		\$ 31.00	\$ 31.00
ENERGY USE, TIER 1 (1 - 1500 kWh)	1,500	\$ 0.0984	\$ 147.60
ENERGY USE, TIER 2 (OVER 1500 kWh)	1,869	\$ 0.1309	\$ 244.65
ELECTRIC FUEL ADJUSTMENT	3,369	\$ 0.0300	\$ 101.07
ELECTRIC SURCHARGE			\$ 43.67
FLORIDA GROSS RECEIPTS TAX			\$ 14.56
COUNTY ELEC UTIL TAX			\$ 48.15
ELECTRIC STATE SALES TAX			\$ 40.49
ELECTRIC WILD SPACES SURTAX			\$ 2.91
ELECTRIC SCHOOL SURTAX			\$ 2.91
- KINCAID WELL SITE			
<b>Total for Electric Service Details</b>			<b>\$ 677.01</b>



Always know where utility lines are buried. Call 811 before digging to have utility lines marked at no cost and visit [sunshine811.com](http://sunshine811.com) for more information.

GRU does not contact customers by phone or email to demand personal information or immediate payment through a pre-paid debit card. Learn more at [gru.com/scams](http://gru.com/scams)

**Customer Inquiries**

Customer Service	(352) 334-3434	Nationwide Toll-free Number	1-800-818-3436
Emergencies or Outages	(352) 334-2871	Stormwater Service	(352) 334-5070
		Solid Waste Service	(352) 334-2330

**Payment Information**

Make checks payable to GRU; return stub and check to: P.O. Box 147051, Gainesville, FL 32614-7051. You may also pay your bill online, by phone at 1-866-269-2881 or at a convenient location in your neighborhood. Visit [www.gru.com](http://www.gru.com) for details.

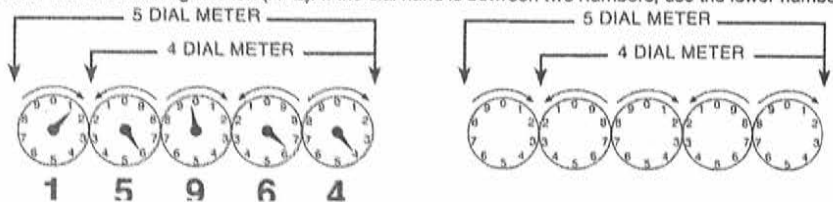
Lobby .....8 AM - 5 PM: M, T, Th, F and 9 AM - 5 PM: W

Drive-thru .....7:30 AM - 6 PM: M - F

Night depository payments will be posted the next business day if received after 3:30 PM weekdays.

**HOW TO READ YOUR METER**

Read the dials from right to left (A - E). If the dial hand is between two numbers, use the lower number.





Gainesville Regional Utilities
301 S.E. 4 Avenue www.gru.com
Gainesville FL 32601 352-334-3434

Account: 2000-6431-6930
Bill Date: 04/02/2021

GATOR WATER WORKS
3260 SE 19TH AVE
GAINESVILLE FL 32641

PARTNER: 1000249927
706001719378
ROUTE: 010065
NRES

ACCOUNT SUMMARY

Table with 3 columns: Description, Amount, and Balance. Includes Current Month Charges (\$799.53), Adjustments & Service Charges (\$0.00), and Balance Forward (\$-813.20).

CREDIT DO NOT PAY \$ 13.67-

Cash Security Deposit on File is \$0.00

SUMMARY OF SERVICES

Table for UTILITIES (See reverse for details about your utility charges.) showing Electric charges of \$619.10 and Total Utility Charge of \$619.10.

TAXES AND SURCHARGES

Table for TAXES AND SURCHARGES showing Florida Gross Receipts Tax (\$17.20), County Utility Tax (\$56.92), Sales Tax (\$54.69), Surcharges (\$51.62), and Total Taxes and Surcharges (\$180.43).

TOTAL CURRENT MONTH CHARGES \$ 799.53

PREVIOUS BILL ACTIVITY

Table for PREVIOUS BILL ACTIVITY showing Previous Balance of \$-813.20 and BALANCE FORWARD of \$-813.20.

If you need help paying your bill, call GRU Customer Service or the United Way of North Central Florida helpline at 2-1-1.

AVERAGE DAILY CONSUMPTION

Table with 5 columns: Service, Meter, This Month, Last Month, Last Year. Shows consumption data for DEMAND, ELECTRIC, AVERAGE TEMPERATURE, and MONTHLY RAINFALL.

SERVICE AGREEMENT: Use or consumption of services rendered by this City shall constitute an agreement by the consumer with the City to abide by the rules of the City with regard to its utility service...

MESSAGES

- This year's annual water quality results will be available in May. Please visit gru.com/waterreport to view.
Do you want a networking solution that will grow with your business? GRUCom Fiber-Optic Communications offers Internet, data transport, colocation and other telecommunications services...
Always know where utility lines are buried to avoid injury or costly repairs. Call 8 before digging to have utility lines marked or visit sunshine811.com.

Entered: MR
COA Code: 618
Approved: WP Q
Paid: EFT 052621
Date: 5/26/21

Please tear off this portion and return it with your payment in the enclosed envelope.



Gainesville Regional Utilities
301 S.E. 4 Avenue
Gainesville FL 32601

ACCOUNT# 2000-6431-6930

Please write account number on check and make check payable to: GRU

Payment Amount

Or pay online at www.gru.com

Credit Balance - No EFT payment will be deducted from your bank account.

CREDIT DO NOT PAY

\$ 13.67-

Sign up for eBill, GRU's free online paperless billing service, at gru.com/ebill

||| GAINESVILLE REGIONAL UTILITIES

002464

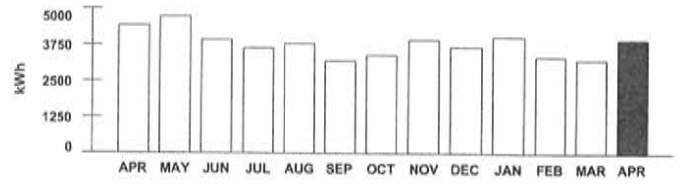


\*\*\*AUTO\*\*MIXED AADC 323 2464 T8:10 2464 1 MB 0.447
GATOR WATER WORKS
4939 CROSS BAYOU BLVD
NEW PORT RICHEY FL 34652-3434

200064316930 00 00000000 00000000

**Electric Service Details**

Meter Number	METER READING DATES Previous Present	Meter Read Type	Days of Service	METER READINGS Previous Present	Meter Multiplier	Electric Consumption	Peak Demand	Next Meter Read on or About
078070729	02/25/2021 03/29/2021	ACTUAL	33	3007 6965	1.00000	3,958 kWh	N/A	04/28/2021
<b>Description</b>		<b>Usage</b>	<b>Rate</b>	<b>Amount Billed</b>				
ELECTRIC CUSTOMER CHARGE		\$	31.00	\$ 31.00				
ENERGY USE, TIER 1 (1 - 1500 kWh)		1,500	\$ 0.0984	\$ 147.60				
ENERGY USE, TIER 2 (OVER 1500 kWh)		2,458	\$ 0.1309	\$ 321.76				
ELECTRIC FUEL ADJUSTMENT		3,958	\$ 0.0300	\$ 118.74				
ELECTRIC SURCHARGE				\$ 51.62				
FLORIDA GROSS RECEIPTS TAX				\$ 17.20				
COUNTY ELEC UTIL TAX				\$ 56.92				
ELECTRIC STATE SALES TAX				\$ 47.81				
ELECTRIC WILD SPACES SURTAX				\$ 3.44				
ELECTRIC SCHOOL SURTAX				\$ 3.44				
KINCAID WELL SITE				\$				
<b>Total for Electric Service Details</b>				<b>\$</b>	<b>799.53</b>			



Always know where utility lines are buried. Call 811 before digging to have utility lines marked at no cost and visit [sunshine811.com](http://sunshine811.com) for more information.

GRU does not contact customers by phone or email to demand personal information or immediate payment through a pre-paid debit card. Learn more at [gru.com/scams](http://gru.com/scams)

**Customer Inquiries**

Customer Service	(352) 334-3434	Nationwide Toll-free Number	1-800-818-3436
Emergencies or Outages	(352) 334-2871	Stormwater Service	(352) 334-5070
		Solid Waste Service	(352) 334-2330

**Payment Information**

Make checks payable to GRU; return stub and check to: P.O. Box 147051, Gainesville, FL 32614-7051. You may also pay your bill online, by phone at 1-866-269-2881 or at a convenient location in your neighborhood. Visit [www.gru.com](http://www.gru.com) for details.

Lobby .....8 AM - 5 PM: M, T, Th, F and 9 AM - 5 PM: W

Drive-thru .....7:30 AM - 6 PM: M - F

Night depository payments will be posted the next business day if received after 3:30 PM weekdays.

**HOW TO READ YOUR METER**

Read the dials from right to left (A-E). If the dial hand is between two numbers, use the lower number.

