

FLUCCS	Description	Acres
211	Improved Pasture	5.43
215	Field Crops	7.81
320	Upland Shrub and Brushland	1.22
434	Upland Mixed Coniferous/Hardwood	2.98
524	Lake < 10 acres	0.09
621	Cypress	0.06
630	Wetland Forested Mixed	0.02
641	Freshwater Marshes	1.86
814	Roads	0.33
8145	Unpaved Road	0.07
832	Electrical Transmission Lines	20.16
<b>Total</b>		<b>40.04</b>

**LEGEND**

- Land Use/Land Cover
- Workspace
- Wetland
- Stream
- Waterbody

FIGURE 5. MAP 1 OF 4  
 LAND USE / LAND COVER MAP  
 CLAY ELECTRIC REBUILD PROJECT  
 COLUMBIA COUNTY, FLORIDA

Sources: FDOT, 2016, 2019; ECT, 2020.

MAP INDEX

1

2

3

4





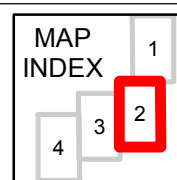
FLUCCS	Description	Acres
211	Improved Pasture	5.43
215	Field Crops	7.81
320	Upland Shrub and Brushland	1.22
434	Upland Mixed Coniferous/Hardwood	2.98
524	Lake < 10 acres	0.09
621	Cypress	0.06
630	Wetland Forested Mixed	0.02
641	Freshwater Marshes	1.86
814	Roads	0.33
8145	Unpaved Road	0.07
832	Electrical Transmission Lines	20.16
<b>Total</b>		<b>40.04</b>

**LEGEND**

- Land Use/Land Cover
- Workspace
- Waterbody

FIGURE 5. MAP 2 OF 4  
 LAND USE / LAND COVER MAP  
 CLAY ELECTRIC REBUILD PROJECT  
 COLUMBIA COUNTY, FLORIDA

Sources: FDOT, 2016, 2019; ECT, 2020.



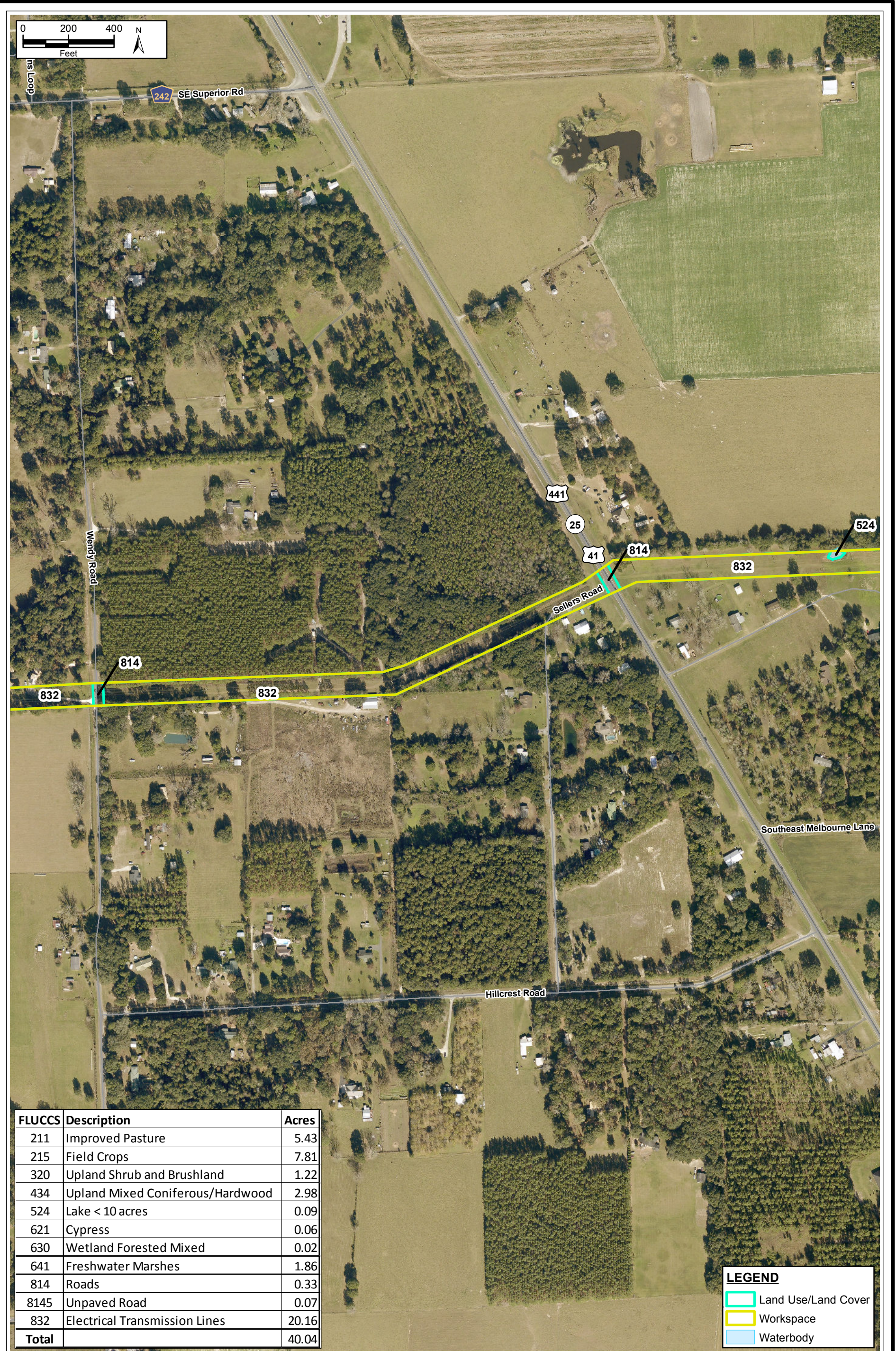


FIGURE 5. MAP 3 OF 4  
 LAND USE / LAND COVER MAP  
 CLAY ELECTRIC REBUILD PROJECT  
 COLUMBIA COUNTY, FLORIDA

Sources: FDOT, 2016, 2019; ECT, 2020.

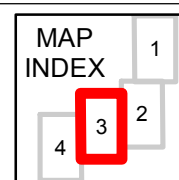




FIGURE 5. MAP 4 OF 4  
 LAND USE / LAND COVER MAP  
 CLAY ELECTRIC REBUILD PROJECT  
 COLUMBIA COUNTY, FLORIDA

Sources: FDOT, 2016, 2019; ECT, 2020.

