



Symbol	Description	Hydric	Acres
1	Albany Fine Sand, 0 To 5 % Slopes	No	6.07
8	Blanton Fine Sand, 0 To 5 % Slopes	No	6.63
13	Bonneau Fine Sand, 2 To 5 % Slopes	No	13.01
14	Bonneau Fine Sand, 5 To 8 % Slopes	No	0.09
25	Goldsboro Loamy Fine Sand, 2 To 5 % Slopes	No	3.29
40	Ocilla Fine Sand, 0 To 5 % Slopes	No	7.15
48	Pelham Fine Sand, 0 To 2 % Slopes	No	0.39
51	Plummer Fine Sand	No	0.84
54	Plummer Muck, Depressional	Yes	0.30
57	Surrency Fine Sand	Yes	2.26
Total			40.04

LEGEND

- Workspace
- Soils

FIGURE 7. MAP 1 OF 4
 SOILS MAP
 CLAY ELECTRIC REBUILD PROJECT
 COLUMBIA COUNTY, FLORIDA

Sources: FDOT, 2016, 2019; ECT, 2020.

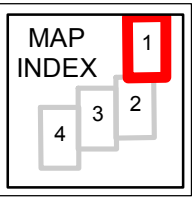
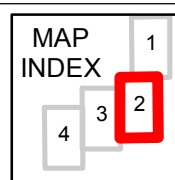
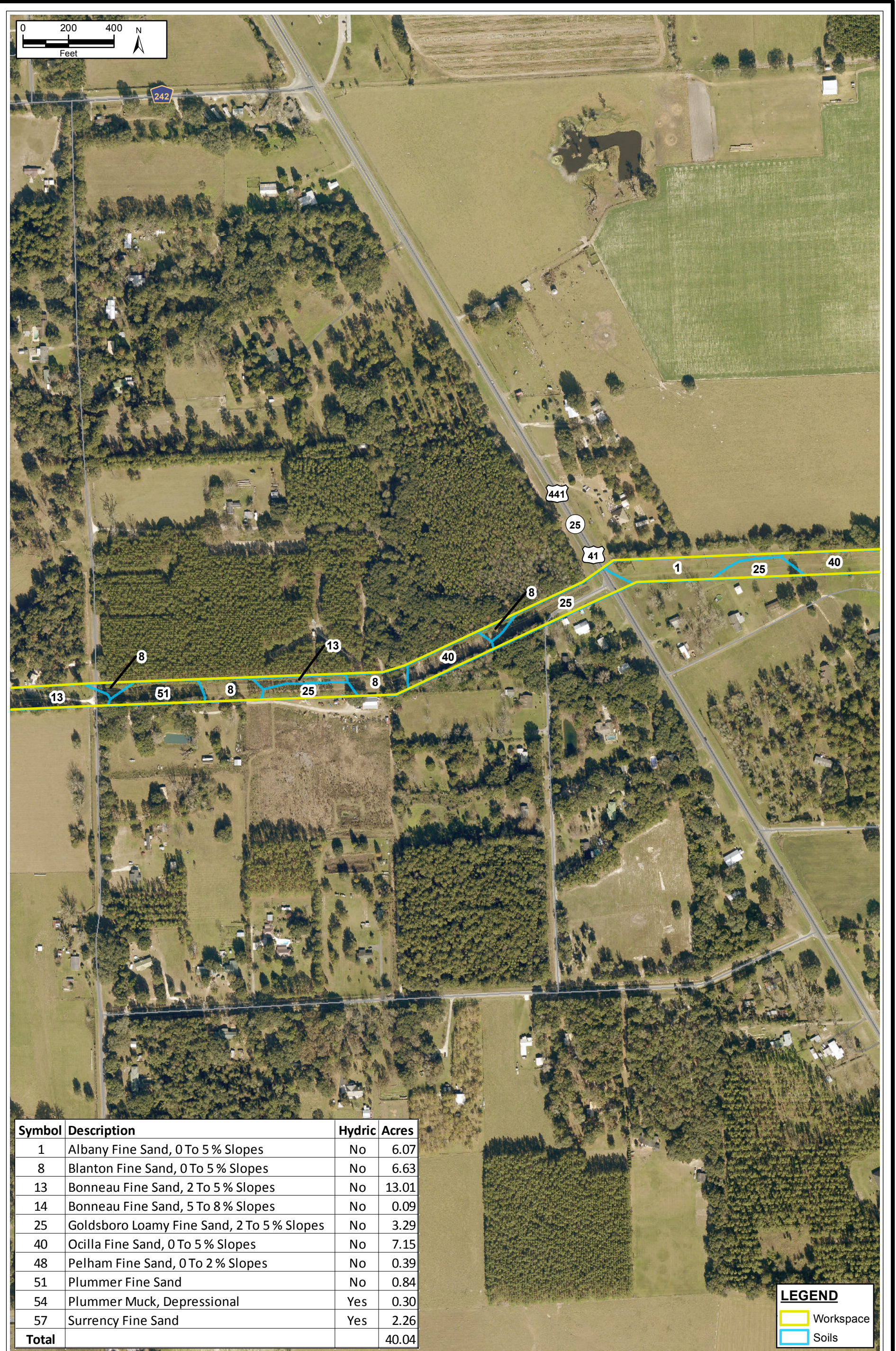




FIGURE 7. MAP 2 OF 4
SOILS MAP
CLAY ELECTRIC REBUILD PROJECT
COLUMBIA COUNTY, FLORIDA

Sources: FDOT, 2016, 2019; ECT, 2020.

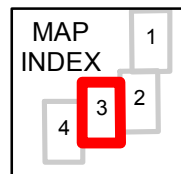




Symbol	Description	Hydric	Acres
1	Albany Fine Sand, 0 To 5 % Slopes	No	6.07
8	Blanton Fine Sand, 0 To 5 % Slopes	No	6.63
13	Bonneau Fine Sand, 2 To 5 % Slopes	No	13.01
14	Bonneau Fine Sand, 5 To 8 % Slopes	No	0.09
25	Goldsboro Loamy Fine Sand, 2 To 5 % Slopes	No	3.29
40	Ocilla Fine Sand, 0 To 5 % Slopes	No	7.15
48	Pelham Fine Sand, 0 To 2 % Slopes	No	0.39
51	Plummer Fine Sand	No	0.84
54	Plummer Muck, Depressional	Yes	0.30
57	Surrency Fine Sand	Yes	2.26
Total			40.04

FIGURE 7. MAP 3 OF 4
SOILS MAP
CLAY ELECTRIC REBUILD PROJECT
COLUMBIA COUNTY, FLORIDA

Sources: FDOT, 2016, 2019; ECT, 2020.





Symbol	Description	Hydric	Acres
1	Albany Fine Sand, 0 To 5 % Slopes	No	6.07
8	Blanton Fine Sand, 0 To 5 % Slopes	No	6.63
13	Bonneau Fine Sand, 2 To 5 % Slopes	No	13.01
14	Bonneau Fine Sand, 5 To 8 % Slopes	No	0.09
25	Goldsboro Loamy Fine Sand, 2 To 5 % Slopes	No	3.29
40	Ocilla Fine Sand, 0 To 5 % Slopes	No	7.15
48	Pelham Fine Sand, 0 To 2 % Slopes	No	0.39
51	Plummer Fine Sand	No	0.84
54	Plummer Muck, Depressional	Yes	0.30
57	Surrency Fine Sand	Yes	2.26
Total			40.04

LEGEND

- Workspace
- Soils
- Hydric Soils

FIGURE 7. MAP 4 OF 4
 SOILS MAP
 CLAY ELECTRIC REBUILD PROJECT
 COLUMBIA COUNTY, FLORIDA

MAP INDEX

1

2

3

4



Sources: FDOT, 2016, 2019; ECT, 2020.