

Copyright: © 2013 National Geographic Society, i-cubed

LEGEND

NFRC Project Features	Geotechnical ERP Features
USGS Quadrangle Index (24k)	Bore in Wetland
Workspace	USGS Quadrangle Index (24k)



**FIGURE 3
TOPOGRAPHIC MAP
MADISON COUNTY**

SCALE: 1 in = 2,000 feet DATE: 5/21/2020 10:13:13 AM
DRAWN BY: unash FILE NAME: NFRC_GeoTechTopoMA

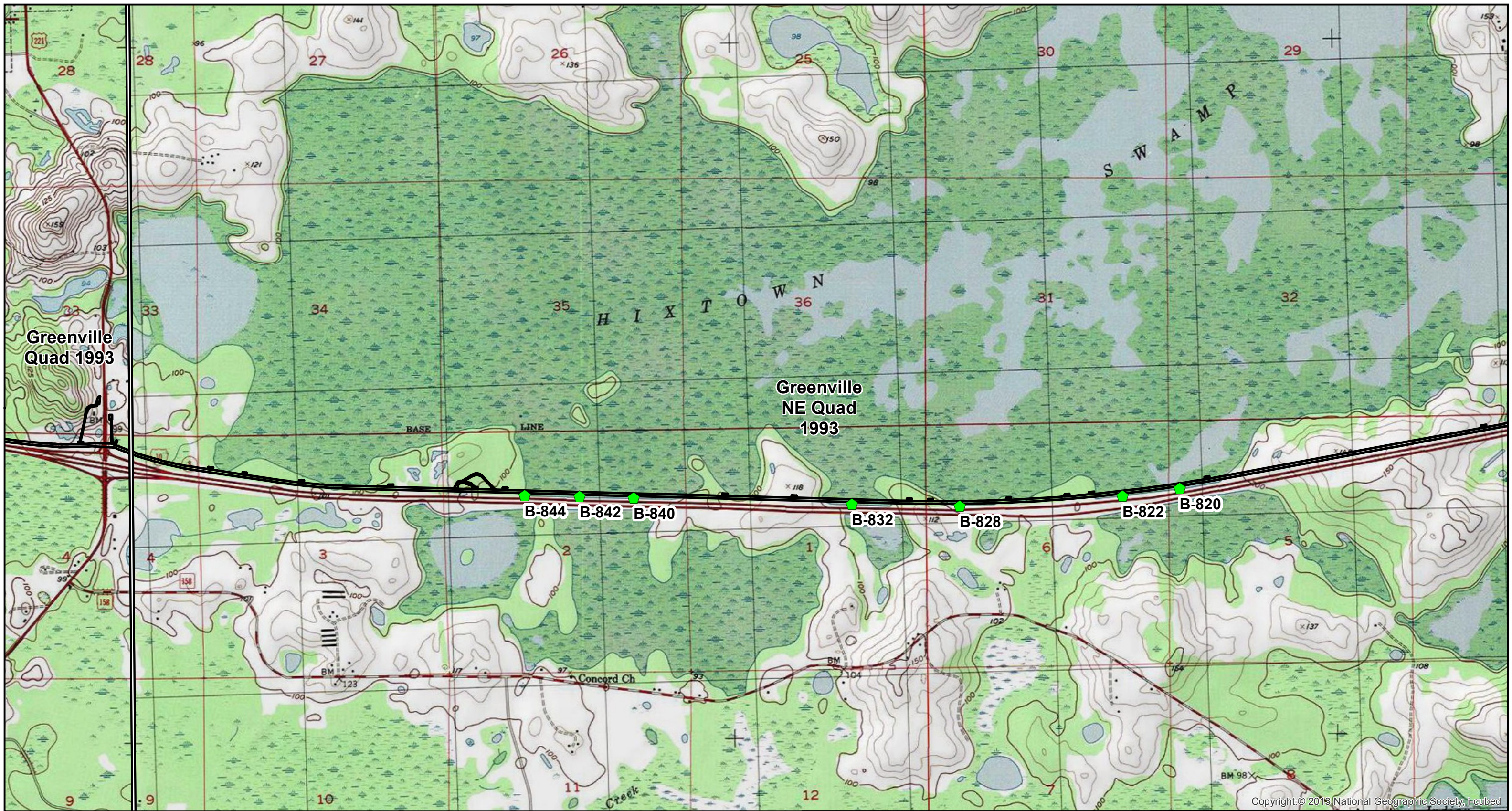
NORTH FLORIDA RESILIENCY CONNECTION

0 1,000 2,000 Feet

FPL 038457
20210015-EI

Sources: FDOT, 2018; ECT, 2019, E&E, 2019; Golder, 2019; ESRI, 2018



NAD 1983 StatePlane Florida North FIPS 0903 Feet





Copyright © 2013 National Geographic Society, i-cubed

LEGEND

NFRC Project Features

-  USGS Quadrangle Index (24k)
-  Workspace

Geotechnical ERP Features

-  Bore in Wetland
-  USGS Quadrangle Index (24k)

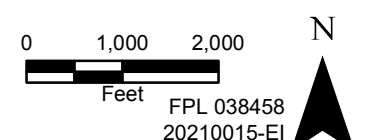


**FIGURE 3
TOPOGRAPHIC MAP
MADISON COUNTY**

SCALE: 1 in = 2,000 feet
DRAWN BY: unash

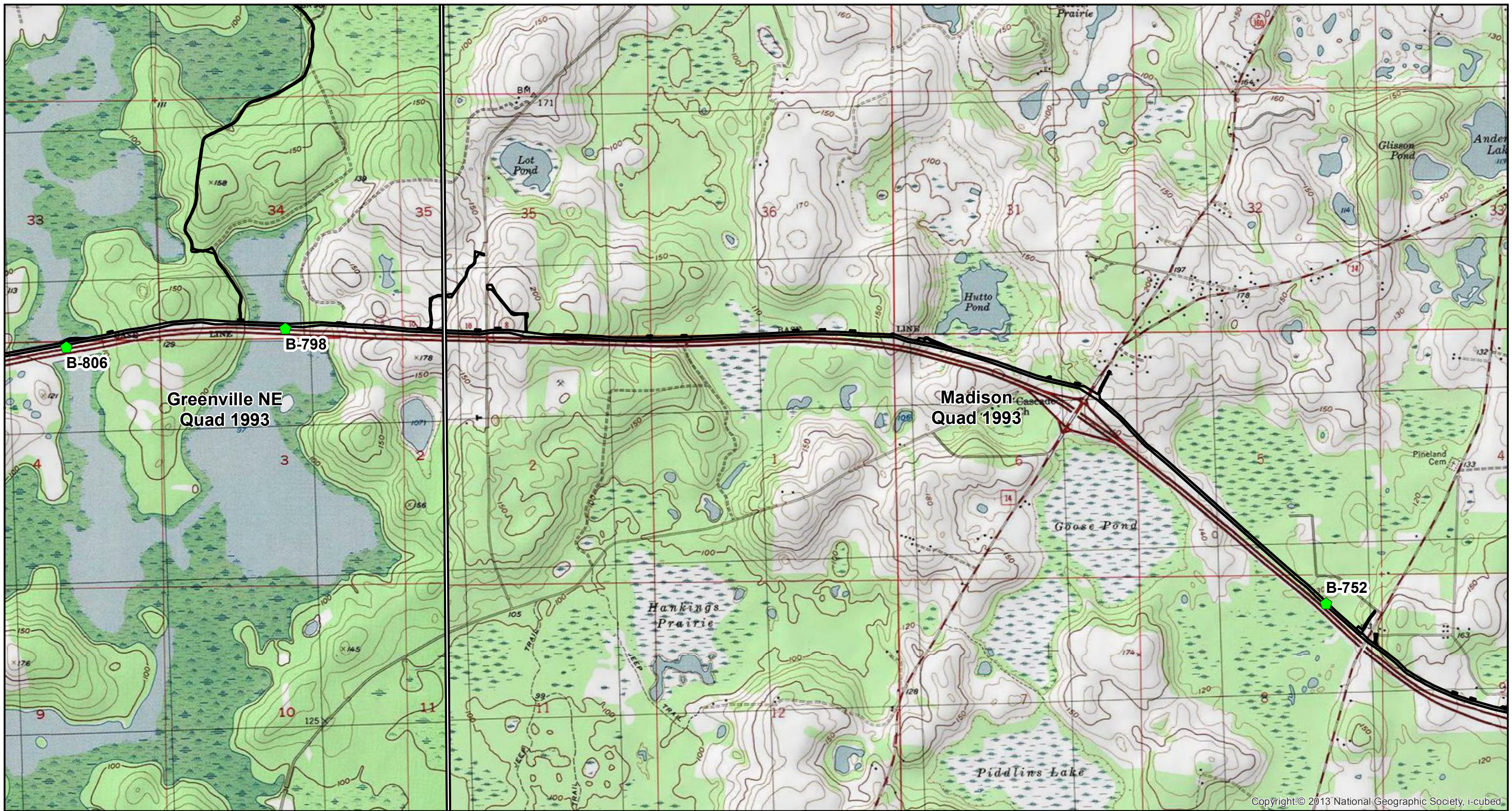
DATE: 5/21/2020 10:13:13 AM
FILE NAME: NFRC_GeoTechTopoMA

NORTH FLORIDA RESILIENCY CONNECTION



Sources: FDOT, 2018; ECT, 2019, E&E, 2019; Golder, 2019; ESRI, 2018

NAD 1983 StatePlane Florida North FIPS 0903 Feet



Copyright: © 2013 National Geographic Society, i-cubed

LEGEND

NFRC Project Features

- USGS Quadrangle Index (24k)
- Workspace

Geotechnical ERP Features

- Bore in Wetland
- USGS Quadrangle Index (24k)



**FIGURE 3
TOPOGRAPHIC MAP
MADISON COUNTY**

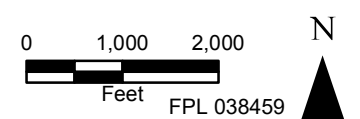
SCALE: 1 in = 2,000 feet

DRAWN BY: unash

DATE: 5/21/2020 10:13:13 AM

FILE NAME: NFRC_GeoTechTopoMA

NORTH FLORIDA RESILIENCY CONNECTION



FPL 038459
20210015-EI