



Research

# The Business Cycle Approach to Equity Sector Investing



FPL 054339  
20210015-E1



**Lisa Emsbo-Mattingly**  
Director, Asset  
Allocation Research



**Dirk Hofschire, CFA**  
Senior Vice President,  
Asset Allocation Research



**Jacob Weinstein, CFA**  
Research Analyst,  
Asset Allocation Research

---

## KEY TAKEAWAYS

- The business cycle, which reflects the fluctuations of activity in an economy, can be a critical determinant of equity sector performance over the intermediate term.
- The business cycle approach to sector investing uses probabilistic analysis to identify the shifting phases of the economy, which provides a framework for allocating to sectors according to the likelihood that they will outperform or underperform.
- For example, the early-cycle phase typically is characterized by lower interest rates and a sharp economic recovery, which tends to lead to outperformance by the consumer discretionary and industrials sectors.
- Generating outperformance among equity sectors with a business cycle approach may be enhanced by adding complementary analysis on industries and inflation, as well as fundamental security research.

---

Over the intermediate term, asset performance is often driven largely by cyclical factors tied to the state of the economy, such as corporate earnings, interest rates, and inflation. The business cycle, which encompasses the cyclical fluctuations in an economy over many months or a few years, can therefore be a critical determinant of equity market returns and the performance of equity sectors. This paper demonstrates Fidelity's business cycle approach to sector investing, and how it potentially can generate positive, active returns over an intermediate time horizon.

## Asset allocation framework

Fidelity's Asset Allocation Research Team (AART) conducts economic, fundamental, and quantitative research to produce asset allocation recommendations for Fidelity's portfolio managers and investment teams. Our framework begins with the premise that long-term historical averages provide a reasonable baseline for portfolio allocations. However, over shorter time horizons—30 years or less—asset price fluctuations are driven by a confluence of various short-, intermediate-, and long-term factors that may cause performance to deviate significantly from historical averages. For this reason, incorporating a framework that analyzes underlying factors and trends among the following three temporal segments can be an effective asset allocation approach: tactical (1 to 12 months), business cycle (1 to 10 years), and secular (10 to 30 years). Exhibit 1 illustrates our duration-based asset allocation framework.

## Understanding business cycle phases

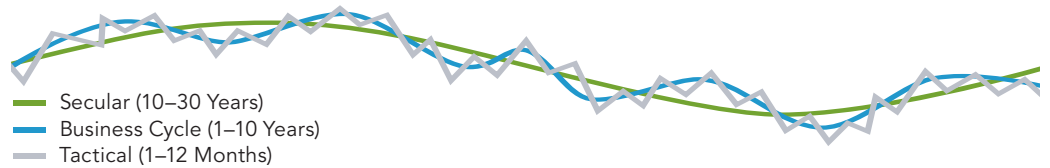
Every business cycle is different in its own way, but certain patterns have tended to repeat themselves over time. Fluctuations in the business cycle are essentially distinct changes in the rate of growth in economic activity, particularly changes in three key cycles—the corporate profit cycle, the credit cycle, and the inventory cycle—as well as changes in the employment backdrop and monetary policy. While unforeseen macroeconomic events or shocks can sometimes disrupt a trend, changes in these

#### Portfolio Construction

- Asset Class
- Country/Region
- Sectors
- Correlations

### EXHIBIT 1: Multi-Time Horizon Asset Allocation Framework

Asset performance is driven by a confluence of various short-, intermediate-, and long-term factors.



For illustrative purposes only. Source: Fidelity Investments (Asset Allocation Research Team).

key indicators historically have provided a relatively reliable guide to recognizing the different phases of an economic cycle. Our quantitatively backed, probabilistic approach helps in identifying, with a reasonable degree of confidence, the state of the business cycle at different points in time. Specifically, there are four distinct phases of a typical business cycle (Exhibit 2).

**Early-cycle phase:** Generally, a sharp recovery from recession, marked by an inflection from negative to positive growth in economic activity (e.g., gross domestic product, industrial production), then an accelerating growth rate. Credit conditions stop tightening amid easy monetary policy, creating a healthy environment for rapid margin expansion and profit growth. Business inventories are low, while sales growth improves significantly.

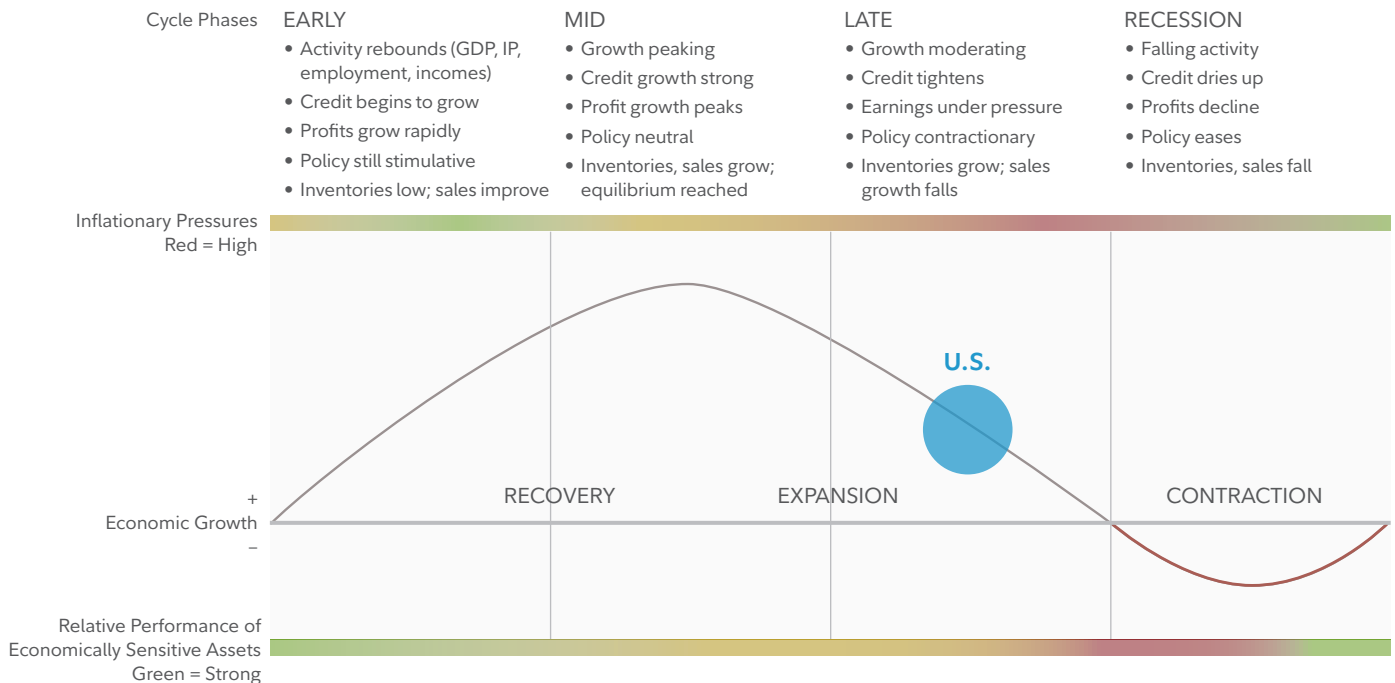
**Mid-cycle phase:** Typically the longest phase of the business cycle. The mid cycle is characterized by a positive but more moderate rate of growth than that experienced during the early-cycle phase. Economic activity gathers momentum, credit growth becomes strong, and profitability is healthy against an accommodative—though increasingly neutral—monetary policy backdrop. Inventories and sales grow, reaching equilibrium relative to each other.

**Late-cycle phase:** Often coincides with peak economic activity, implying that the rate of growth remains positive but slows. A typical late-cycle phase may be characterized as an overheating stage for the economy when capacity becomes constrained, which leads to rising inflationary pressures. While rates of inflation are not always high, rising inflationary pressures and a tight labor market tend to crimp profit margins and lead to tighter monetary policy.

**Recession phase:** Features a contraction in economic activity. Corporate profits decline and credit is scarce for all economic actors. Monetary policy becomes more accommodative and inventories gradually fall despite low sales levels, setting up for the next recovery.

## EXHIBIT 2: Business Cycle Framework

The business cycle has four distinct phases. The U.S. is firmly in the late cycle as of 2019.



Note: The diagram above is a hypothetical illustration of the business cycle. There is not always a chronological, linear progression among the phases of the business cycle, and there have been cycles when the economy has skipped a phase or retraced an earlier one. Economically sensitive assets include stocks and high-yield corporate bonds, while less economically sensitive assets include Treasury bonds and cash. We use the classic definition of recession, involving an outright contraction in economic activity, for developed economies. Source: Fidelity Investments (AART), as of March 31, 2019.

The performance of economically sensitive assets such as stocks tends to be the strongest during the early phase of the business cycle, when growth rises at an accelerating rate, then moderates through the other phases until returns generally decline during the recession. In contrast, more defensive assets such as Treasury bonds typically experience the opposite pattern, enjoying their highest returns relative to stocks during a recession, and their worst performance during the early cycle (see Fidelity article “The Business Cycle Approach to Asset Allocation”).

### Equity sector performance patterns

Historical analysis of the cycles since 1962 shows that the relative performance of equity market sectors has tended to rotate as the overall economy shifts from one stage of the business cycle to the next, with different sectors assuming performance leadership in different economic phases.<sup>1</sup> Due to structural shifts

in the economy, technological innovation, varying regulatory backdrops, and other factors, no one sector has behaved uniformly for every business cycle. While it is important to note outperformance, it is also helpful to recognize sectors with consistent underperformance. Knowing which sectors of the market to avoid can be just as useful as knowing which tend to have the most robust outperformance.

### Early cycle phase

Historically, the early cycle phase has featured the highest absolute performance. Since 1962, the broader stock market has produced an average total return of more than 20% per year during this phase, and its average length has been roughly one year. On a relative basis, sectors that typically benefit most from a backdrop of low interest rates and the first signs of economic improvement have tended to lead the broader market’s advance.

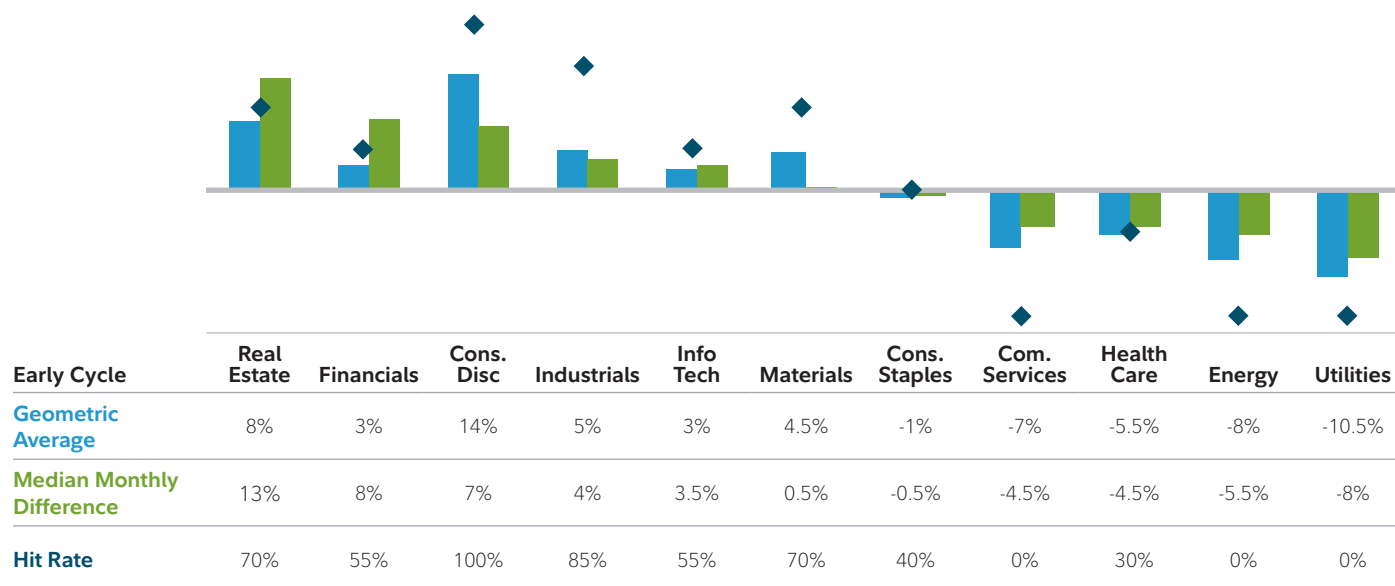
Specifically, interest rate-sensitive sectors—such as **consumer discretionary, financials, and real estate**—historically have outperformed the broader market (Exhibit 3). These sectors have performed well, due in part to industries within the sectors that typically benefit from increased borrowing, including diversified financials and consumer-linked industries such as autos and household durables in **consumer discretionary**.

Elsewhere, economically sensitive sectors—such as **industrials** and **information technology**—have been boosted by shifts from recession to recovery. For example, the **industrials** sector has some industries—such as transportation and capital goods—in which stock prices often have rallied in anticipation of economic recovery. **Information technology** and **materials** stocks typically have been aided by renewed expectations for consumer and corporate

spending strength.

Laggards of the early-cycle phase include **health care** and **utilities**, which generally are more defensive in nature due to fairly persistent demand across all stages of the cycle. **Energy** sector stocks also have lagged during the early phase, as inflationary pressures—and thus energy prices—tend to be lower during a recovery from recession. From a performance consistency perspective, **consumer discretionary** stocks have beaten the broader market in every early-cycle phase since 1962, while **industrials** also have exhibited impressive cycle hit rates. The **financials** and **information technology** sectors both have had healthy average and median relative performance, though their lower hit rates are due in part to the diversity of their underlying industries. The **communication services** sector has historically underperformed in the early-cycle phase, but its

**EXHIBIT 3: EARLY CYCLE.** Sectors that have performed well in the early cycle are interest rate-sensitive (CND, FIN, RE) and economically sensitive (IND, IT, MATS) sectors.



Includes equity market returns from 1962 through 2016. Returns are represented by the top 3000 U.S. stocks ranked by market capitalization. Sectors as defined by GICS. Source: Fidelity Investments (AART), as of March 31, 2019. Past performance is no guarantee of future results.



evolving mix of industries provides less confidence in the persistence of this pattern moving forward. (See page 9 for a summary of recent changes to a popular sector classification framework that established the communication services sector.)

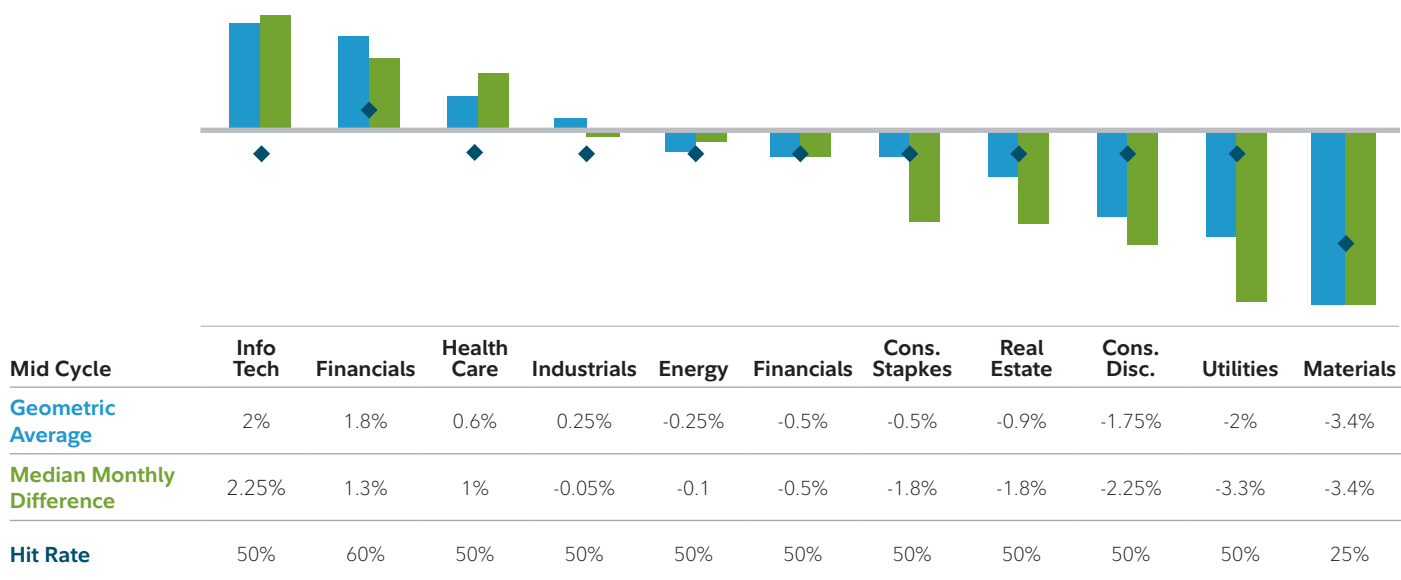
### Mid-cycle phase

As the economy moves beyond its initial stage of recovery and as growth rates moderate, the leadership of interest rate-sensitive sectors typically has tapered. At this point in the cycle, economically sensitive sectors still have performed well, but a shift has often taken place toward some industries that see a peak in demand for their products or services only after the expansion has become more firmly entrenched. Average annual stock market performance has tended to be fairly strong (13%), though not to the same degree as in the early-cycle phase. In addition,

the average mid-cycle phase of the business cycle tends to be significantly longer than any other stage (roughly three-and-a-half years), and this phase is also when most stock market corrections have taken place. For this reason, sector leadership has rotated frequently, resulting in the smallest sector-performance differentiation of any business cycle phase. No sector has outperformed or underperformed the broader market more than three-quarters of the time, and the magnitude of the relative performance has been modest compared with the other three phases.

**Information technology** has been the best performer of all the sectors during this phase, having certain industries—such as semiconductors and hardware—that typically pick up momentum once companies gain more confidence in the stability of an economic recovery and are more willing to make capital expenditures (Exhibit 4).

**EXHIBIT 4: MID CYCLE.** Sector leadership has rotated frequently in the mid-cycle phase, resulting in the smallest sector performance differentiation of any business cycle phase.



Sectors as defined by GICS. Source: Fidelity Investments (AART), as of March 31, 2019. Past performance is no guarantee of future results.

We also expect the new **communication services** sector to outperform during the mid-cycle phase, largely due to the strength of the media industry at this point in the cycle.

From an underperformance perspective, the **materials** and **utilities** sectors have lagged by the greatest magnitude. Due to the lack of clear sector leadership, the mid-cycle phase is a market environment in which investors may want to consider keeping their sector bets to a minimum while employing other approaches to generate additional active opportunities.

### Late-cycle phase

The late-cycle phase has had an average duration of roughly a year and a half, and overall stock market performance has averaged 6% on an annualized basis. As the economic recovery matures, the **energy** and **materials** sectors, whose fate is closely tied to the prices of raw materials, previously have done well as inflationary pressures build and the late-cycle economic expansion helps maintain solid demand (Exhibit 5).

Elsewhere, as investors begin to glimpse signs of an economic slowdown, defensive-oriented sectors—those in which revenues are tied more to basic needs and are less economically sensitive—generally have performed well. These include **health care**, **consumer staples**, and **utilities**. Looking across all three analytical measures, the **energy** sector has seen the most convincing patterns of outperformance in the late cycle, with high average and median relative performance along with a high cycle hit rate.

**Information technology** and **consumer discretionary** stocks have lagged most often, tending to suffer the most during this phase, as inflationary pressures crimp profit margins and investors move away from the most economically sensitive areas.

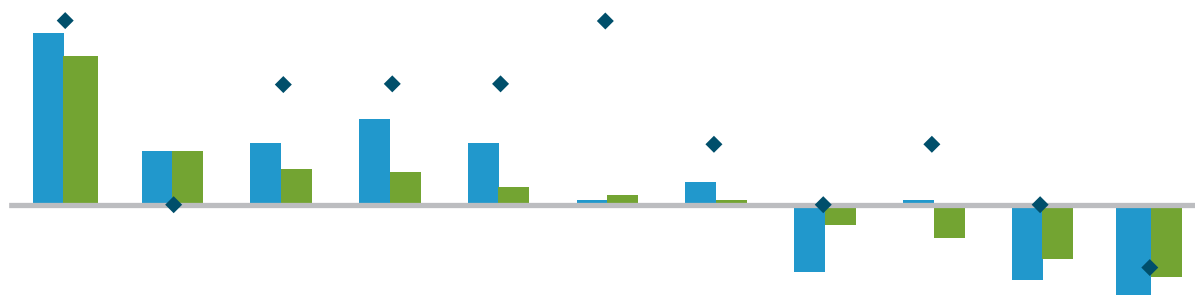
### Recession phase

The recession phase has historically been the shortest, lasting slightly less than a year on average—and the broader market has performed poorly during this phase (–15% average annual return). As economic growth stalls and contracts, sectors that are more economically sensitive fall out of favor, and those that are defensively oriented move to the front of the performance line. These less economically sensitive sectors, including **consumer staples**, **utilities**, and **health care**, are dominated by industries that produce items such as toothpaste, electricity, and prescription drugs, which consumers are less likely to cut back on during a recession (see Exhibit 6). These sectors' profits are likely to be more stable than those in other sectors in a contracting economy. The **consumer staples** sector has a perfect track record of outperforming the broader market throughout the entire recession phase, while **utilities** and **health care** are frequent outperformers. High dividend yields also have helped these sectors hold up relatively well during recessions. On the downside, economically and interest rate-sensitive sectors—such as **industrials**, **information technology**, and **real estate**—typically have underperformed the broader market during this phase.

### The merits of the business cycle approach

The business cycle approach offers considerable potential for taking advantage of relative sector-performance opportunities. As the probability of a shift in phase increases—for instance, from mid cycle to late cycle—such a strategy allows investors to adjust their exposure to sectors that have prominent performance patterns in the next phase of the cycle (Exhibit 7). Our views on these phase shifts are presented in recurring monthly updates on the business cycle. By its very nature, the business cycle focuses on an intermediate

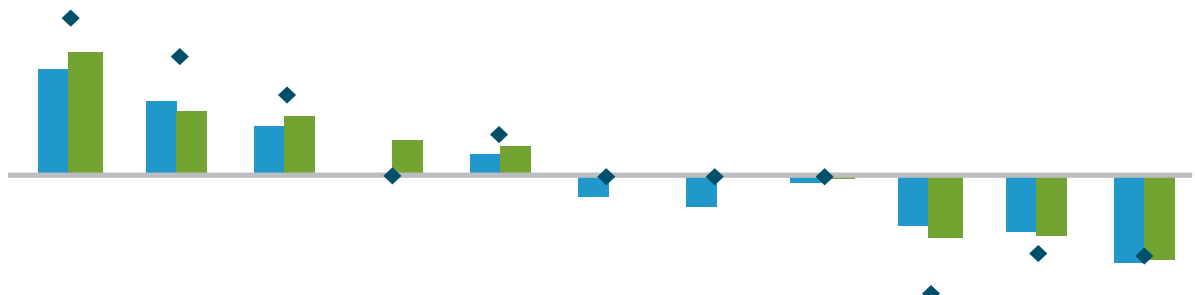
**EXHIBIT 5: LATE CYCLE.** As the economic recovery matures, the energy and materials sectors, whose fate is closely tied to the prices of raw materials, have typically performed well, as have defensive-oriented sectors (HTH, CNS, UTL).



| Late Cycle                       | Energy | Utilities | Cons. Staples | Health Care | Materials | Industrials | Real Estate | Com. Services | Financials | Info Tech | Cons. Disc. |
|----------------------------------|--------|-----------|---------------|-------------|-----------|-------------|-------------|---------------|------------|-----------|-------------|
| <b>Geometric Average</b>         | 14.5%  | 4.75%     | 5%            | 7%          | 5%        | 0.5%        | 2%          | -5.5%         | 0.5%       | -6%       | -7%         |
| <b>Median Monthly Difference</b> | 13%    | 4.75%     | 3%            | 2.5%        | 2%        | 1%          | 0.5%        | -2%           | -3%        | -4.5%     | -6%         |
| <b>Hit Rate</b>                  | 85%    | 35%       | 65%           | 65%         | 65%       | 85%         | 50%         | 30%           | 50%        | 30%       | 15%         |

Sectors as defined by GICS. Source: Fidelity Investments (AART), as of March 31, 2019. Past performance is no guarantee of future results.

**EXHIBIT 6: RECESSION.** Defensive-oriented sectors (CNS, UTL, and HTH) have tended to outperform during the recession phase.



| Late Cycle                       | Cons. Staples | Utilities | Health Care | Cons. Disc. | Com. Services | Materials | Financials | Energy | Industrials | Info Tech | Real Estate |
|----------------------------------|---------------|-----------|-------------|-------------|---------------|-----------|------------|--------|-------------|-----------|-------------|
| <b>Geometric Average</b>         | 14%           | 9.5%      | 6%          | 0%          | 3%            | -3%       | -4%        | -1%    | -6%         | -6.5%     | -11%        |
| <b>Median Monthly Difference</b> | 15.5%         | 8%        | 7.5%        | 4.5%        | 4%            | 0.5%      | 0.5%       | -0.5%  | -7%         | -6.75%    | -10.5%      |
| <b>Hit Rate</b>                  | 100%          | 85%       | 70%         | 40%         | 55%           | 40%       | 40%        | 40%    | 0%          | 15%       | 15%         |

Sectors as defined by GICS. Source: Fidelity Investments (AART), as of March 31, 2019. Past performance is no guarantee of future results.



time horizon (i.e., cycle phases that rotate on average every few months to few years). This may make it more practical for some investors to execute than shorter-term approaches.

### Additional considerations for capturing alpha in sectors

Incorporating analysis and execution at the industry level may provide investors with greater opportunities to generate relative outperformance (“alpha”) in a business cycle approach. Industries within each

sector can have significantly different fundamental performance drivers that may be masked by sector-level results, leading to significantly different industry-level price performance (see Exhibit 8). In addition, there are other strategies that can be incorporated to complement the business cycle approach and potentially capture additional alpha in equity sectors. Consider the following:

**Macro-fundamental analysis:** Macro-fundamental industry research can identify—independently of typical business cycle patterns—variables specific to

#### EXHIBIT 7: Looking at sectors throughout the business cycle

Every business cycle is different, and so are the relative performance patterns among equity sectors. While it is important to note outperformance, it is also helpful to recognize sectors with consistent underperformance. Sector investing can help investors position their portfolios for the next business cycle shift.

| Sector                 | Early Rebounds | Mid Peaks | Late Moderates | Recession Contracts |
|------------------------|----------------|-----------|----------------|---------------------|
| Financials             | +              |           |                |                     |
| Real Estate            | ++             |           |                | --                  |
| Consumer Discretionary | +              | -         | --             |                     |
| Technology             | +              | +         | --             | --                  |
| Industrials            | ++             |           |                | --                  |
| Materials              | +              | --        | ++             |                     |
| Consumer Staples       |                |           | ++             | ++                  |
| Health Care            | --             |           | ++             | ++                  |
| Energy                 | --             |           | ++             |                     |
| Communication Services |                | +         |                | -                   |
| Utilities              | --             | -         | +              | ++                  |

Economically sensitive sectors may tend to outperform, while more defensive sectors have tended to underperform.

Making marginal portfolio allocation changes to manage drawdown risk with sectors may enhance risk-adjusted returns during this cycle.

Defensive and inflation-resistant sectors tend to perform better, while more cyclical sectors underperform.

Since performance is generally negative in recessions, investors should focus on the most defensive, historically stable sectors.

Note: The typical business cycle shown above is a hypothetical illustration. There is not always a chronological progression in this order, and in past cycles the economy has skipped a phase or retraced an earlier one. Source for sector performance during business cycle: Fidelity Investments (AART). Unshaded (white) portions above suggest no clear pattern of over- or underperformance vs. broader market. Double +/- signs indicate that the sector is showing a consistent signal across all three metrics: full-phase average performance, median monthly difference, and cycle hit rate. A single +/- indicates a mixed or less consistent signal. Returns data from 1962 to 2016. Annualized returns are represented by the performance of the largest 3,000 U.S. stocks measured by market capitalization, and sectors are defined by the Global Industry Classification Standard (GICS®). Past performance is no guarantee of future results. See below for important information.

## Analyzing relative sector performance

Certain metrics help evaluate the historical performance of each sector relative to the broader equity market (all data is annualized for comparison purposes):

- **Full-phase average performance:** Calculates the (geometric) average performance of a sector in a particular phase of the business cycle, and subtracts the performance of the broader equity market. This method better captures the impact of compounding and performance that is experienced across full market cycles (i.e., longer holding periods). However, performance outliers carry greater weight and can skew results.
- **Median monthly difference:** Calculates the difference in the monthly performance of a sector compared with the broader equity market, and then takes the midpoint of those observations. This measure is indifferent to when a return period begins during a phase, which

makes it a good measure for investors who may miss significant portions of each business cycle phase. This method mutes the extreme performance differences of outliers, and also underemphasizes the impact of compounding returns.

- **Cycle hit rate:** Calculates the frequency of a sector's outperforming the broader equity market over each business cycle phase since 1962. This measure represents the consistency of sector performance relative to the broader market over different cycles, removing the possibility that outsized gains during one period in history influence overall averages. This method suffers somewhat from small sample sizes, with only seven full cycles during the period, but persistent out- or underperformance still can be observed.

**EXHIBIT 8: Each industry within a sector has specific drivers that may affect performance.**

|              | EARLY                                    | MID                    | LATE                              | RECESSION              |
|--------------|------------------------------------------|------------------------|-----------------------------------|------------------------|
| OUTPERFORM   | Economically and Interest Rate Sensitive | Economically Sensitive | Defensive and Inflation Sensitive | Defensive              |
| UNDERPERFORM | Defensive                                | Defensive              | Economically Sensitive            | Economically Sensitive |

For illustrative purposes only. Source: Fidelity Investments (AART).

the dynamics of each industry that may affect performance. For example, a significant change in the cost of key raw material inputs—such as oil prices for airlines—can drive a deviation in an industry’s performance.

**Bottom-up analysis:** Company-specific analysis— through individual security selection—can identify unique traits in individual companies that may outweigh the impact of the typical business cycle pattern on that company’s future performance.

**Global business-cycle analysis:** The U.S. stock market has global exposure, which may warrant allocating toward or away from domestically focused sectors, depending on the phase of the U.S. business cycle relative to the rest of the world. When the U.S. business cycle is more favorable than the global cycle, sectors with more global exposure are likely to face greater headwinds to revenue growth, while more domestically linked sectors could fare relatively well.

**Inflation overlay:** The inflation backdrop can heavily influence some sectors’ profitability. Short-term inflation trends tend to ebb and flow with the movement of the business cycle, but longer-term inflation trends sometimes move independently of the business cycle (see Leadership Series article “Long-Term Inflation Risks May Be on the Rise”).

**Secular overlay:** Long-term secular trends that are expected to unfold over multiple business cycles can warrant a permanently higher or lower allocation to a given sector than a pure business cycle approach would suggest.

### Investment implications

Every business cycle is different, and so are the relative performance patterns among equity sectors. However, using a disciplined business cycle approach, it is possible to identify key phases in the economy, and to use those signals in an effort to achieve active returns from sector allocation.

## About Fidelity’s Business Sector Framework

We updated our Business Cycle Sector Framework as a result of the September 2018 changes to the Global Industry Classification Standard (GICS®) structure. This framework was last refreshed in 2016, following the elevation of real estate as the 11th GICS sector. As of September 2018, the newly formed communication services sector combined the legacy telecommunication services sector with entertainment software, traditional media, and internet media companies. As a result, this new sector is more cyclical than its more-defensive predecessor, telecom, and we expect it to perform well in the mid cycle and underperform during recessions. Our assessment of communication services is more qualitative than that of the other sectors, given its evolving mix of industries.

Other sectors were also impacted by the shift in the GICS structure. Consumer discretionary lost some large internet media companies and gained online marketplaces. The departure of internet companies made the outlook for consumer discretionary less favorable in the mid cycle. Information technology was also affected by losing some internet and entertainment software companies, but the overall business cycle playbook for information technology companies did not change as a result.

## Endnotes

### Index definitions

The S&P 500® index is a market capitalization-weighted index of 500 common stocks chosen for market size, liquidity, and industry group representation to represent U.S. equity performance. S&P 500® is a registered trademark of Standard & Poor's Financial Services LLC.

The Russell 1000® Index is a stock market index that represents the highest-ranking 1,000 stocks in the Russell 3000® Index, which represents about 90% of the total market capitalization of that index.

Sectors and industries are defined by the Global Industry Classification Standard (GICS®). The S&P 500 sector indexes include the 11 standard GICS sectors that make up the S&P 500® index. The market capitalization of all S&P 500® sector indexes together comprises the market capitalization of the parent S&P 500® index; each member of the S&P 500® index is assigned to one (and only one) sector.

Sectors are defined as follows: **Communication Services:** companies that facilitate communication or provide access to entertainment content and other information through various types of media. **Consumer Discretionary:** companies that provide goods and services that people want but don't necessarily need, such as televisions, cars, and sporting goods; these businesses tend to be the most sensitive to economic cycles. **Consumer Staples:** companies that provide goods and services that people use on a daily basis, like food, household products, and personal-care products; these businesses tend to be less sensitive to economic cycles. **Energy:** companies whose businesses are dominated by either of the following activities: the construction or provision of oil rigs, drilling equipment, or other energy-related services and equipment, including seismic data collection; or the exploration, production, marketing, refining, and/or transportation of oil and gas products, coal, and consumable fuels. **Financials:** companies involved in activities such as banking, consumer finance, investment banking and brokerage, asset management, and insurance and investments. **Health Care:** companies in two main industry groups: health care equipment suppliers and manufacturers, and providers of health care services; and companies involved in the research, development, production, and marketing of pharmaceuticals and biotechnology products. **Industrials:** companies whose businesses manufacture and distribute capital goods, provide commercial services and supplies, or provide transportation services. **Materials:** companies that are engaged in a wide range of commodity-related manufacturing. **Real Estate:** companies in two main industry groups—real estate investment trusts (REITs), and real estate management and development companies. **Technology:** companies in technology software and services and technology hardware and equipment. **Utilities:** companies considered to be electric, gas, or water utilities, or companies that operate as independent producers and/or distributors of power.



## Authors

### **Lisa Emsbo-Mattingly**

Director, Asset Allocation Research

### **Dirk Hofschire, CFA**

Senior Vice President, Asset Allocation Research

### **Jacob Weinstein, CFA**

Research Analyst, Asset Allocation Research

The Asset Allocation Research Team (AART) conducts economic, fundamental, and quantitative research to develop asset allocation recommendations for Fidelity's portfolio managers and investment teams. AART is responsible for analyzing and synthesizing investment perspectives across Fidelity's asset management unit to generate insights on macroeconomic and financial market trends and their implications for asset allocation.

*Information provided in this document is for informational and educational purposes only. To the extent any investment information in this material is deemed to be a recommendation, it is not meant to be impartial investment advice or advice in a fiduciary capacity and is not intended to be used as a primary basis for you or your client's investment decisions. Fidelity and its representatives may have a conflict of interest in the products or services mentioned in this material because they have a financial interest in them, and receive compensation, directly or indirectly, in connection with the management, distribution, and/or servicing of these products or services, including Fidelity funds, certain third-party funds and products, and certain investment services.*

Information presented herein is for discussion and illustrative purposes only and is not a recommendation or an offer or solicitation to buy or sell any securities. Views expressed are as of the date indicated, based on the information available at that time, and may change based on market and other conditions. Unless otherwise noted, the opinions provided are those of the author and not necessarily those of Fidelity Investments or its affiliates. Fidelity does not assume any duty to update any of the information.

**Past performance is no guarantee of future results.**

**Neither asset allocation nor diversification ensures a profit or guarantees against a loss.**

**Investing involves risk, including risk of loss.**

Stock markets are volatile and can decline significantly in response to adverse issuer, political, regulatory, market, or economic developments.

Because of its narrow focus, sector investing tends to be more volatile than investments that diversify across many sectors and companies. Each sector investment is also subject to the additional risks associated with its particular industry.

References to specific investment themes are for illustrative purposes only and should not be construed as recommendations or investment advice. Investment decisions should be based on an individual's own goals, time horizon, and tolerance for risk.

All indexes are unmanaged. You cannot invest directly in an index.

The typical business cycle depicts the general pattern of economic cycles throughout history, though each cycle is different. In general, the typical business cycle demonstrates the following:

- During the typical early cycle phase, the economy bottoms and picks up steam until it exits recession and then begins the recovery as activity accelerates. Inflationary pressures are typically low, monetary policy is accommodative, and the yield curve is steep.
- During the typical mid-cycle phase, the economy exits recovery and enters into expansion, characterized by broader and more self-sustaining economic momentum but a more moderate pace of growth. Inflationary pressures typically begin to rise, monetary policy becomes tighter, and the yield curve experiences some flattening.
- During the typical late-cycle phase, the economic expansion matures, inflationary pressures continue to rise, and the yield curve may eventually become flat or inverted. Eventually, the economy contracts and enters recession, with monetary policy shifting from tightening to easing.

Please note that there is no uniformity of time among phases, nor is there always a chronological progression in this order. For example, business cycles have varied between one and 10 years in the U.S., and there have been examples when the economy has skipped a phase or retraced an earlier one.

Third-party marks are the property of their respective owners; all other marks are the property of FMR LLC.

Fidelity Institutional Asset Management® (FIAM®) provides registered investment products via Fidelity Distributors Company LLC and institutional asset management services through FIAM LLC or Fidelity Institutional Asset Management Trust Company.

Personal and workplace investment products are provided by Fidelity Brokerage Services LLC, Member NYSE, SIPC.

Fidelity Clearing & Custody Solutions® provides clearing, custody, or other brokerage services through National Financial Services LLC or Fidelity Brokerage Services LLC (Members NYSE, SIPC).

© 2020 FMR LLC. All rights reserved.

614169.30.0

**FPL 054351  
20210015-EI**