



January 13, 2025

Office of Commission Clerk
Florida Public Service Commission
Attn: Clayton Lewis
2540 Shumard Oak Boulevard
Tallahassee FL 32399-0850

RE: 2nd Deficiency Letter dated December 17, 2024
Docket No. 20240118-SU Kirby D Morgan, Inc.

Dear Sir:

Please see enclosed for the following:

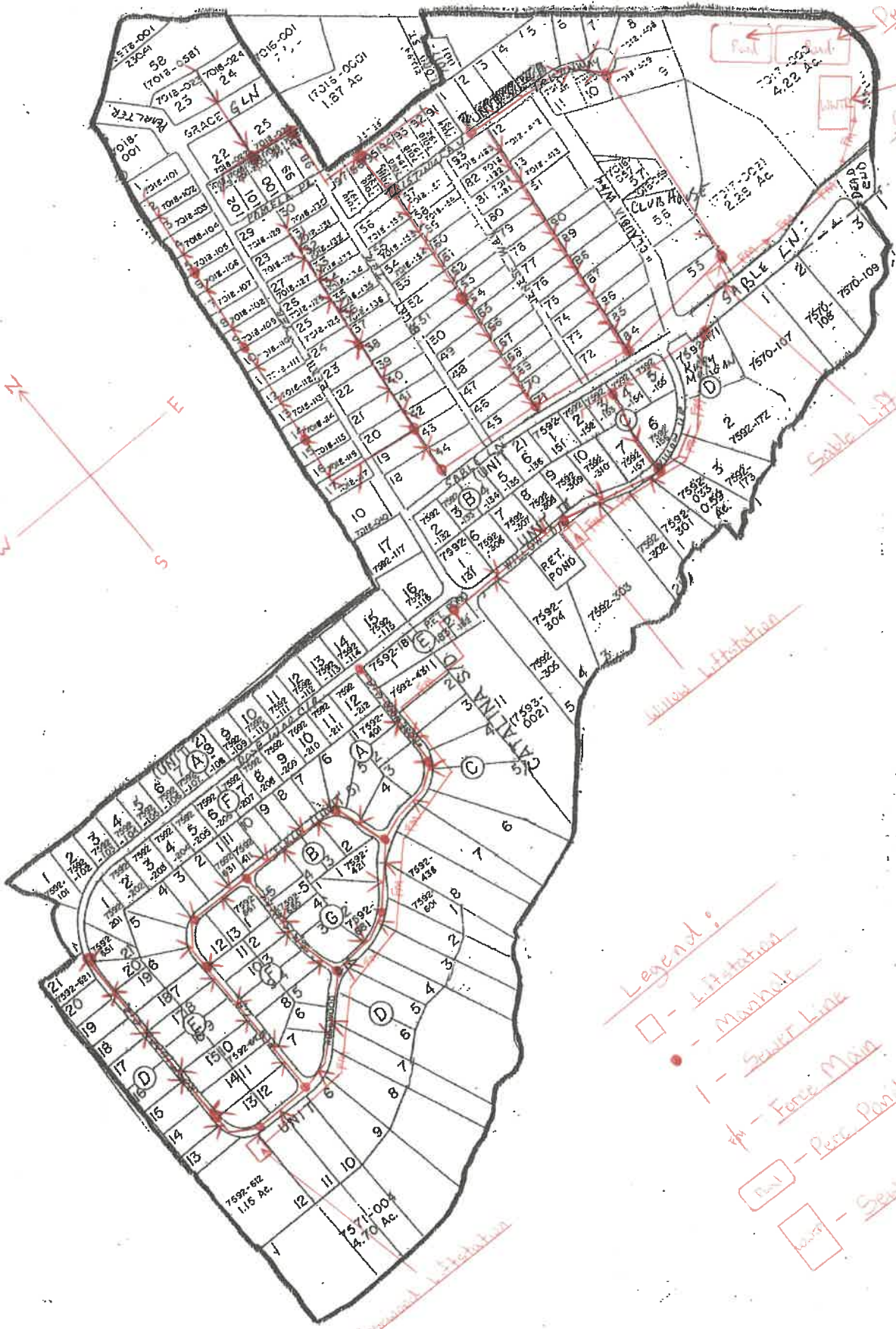
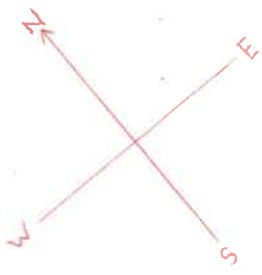
1. System Map
2. Territory Map

Please advise if you have questions or need additional information.

Sincerely,

Cameron L. Scott, CPA, on behalf of
Janet Del'Etoile
Kirby D Morgan, Inc.
954-336-3235

RECEIVED-FPSC
2025 JAN 14 AM 10:23
COMMISSION
CLERK



- Legend:
- - L-Station
 - - - Manhole
 - - - Sewer Line
 - ⚡ - Force Main
 - ⊞ - Perc. Pond
 - ⊞ - Sewer Plant

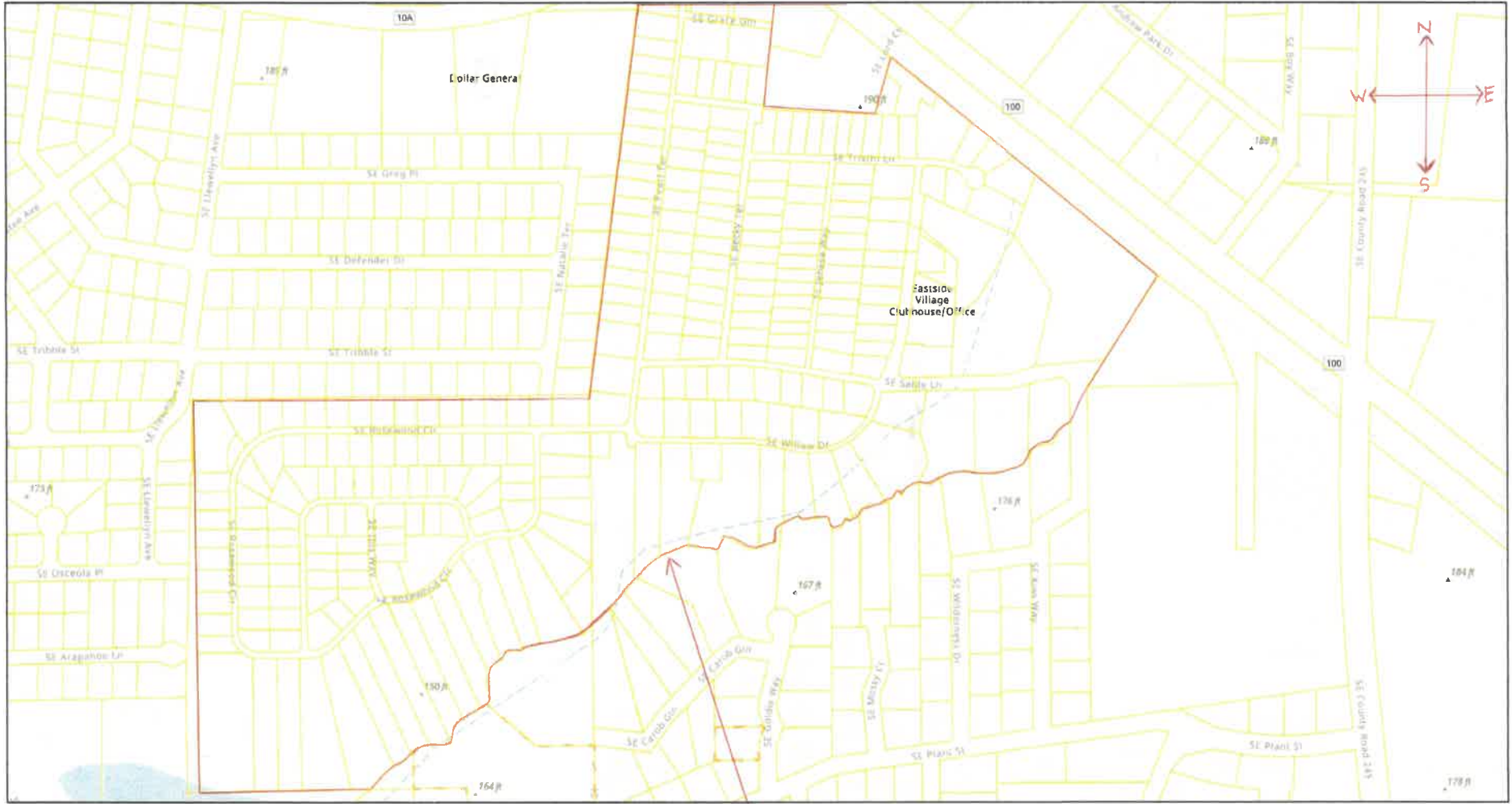
Perc. Ponds
Sewer Plant

Sable L-Station

Union L-Station

Reservoir L-Station

Columbia County FL. Building and Zoning



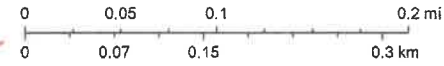
1/8/2025, 2:07:40 PM

- Parcel Notes
- Parcels

Red line outlines territory

Territory Map Scale

1:4,514



Sources: Esri, Airbus DS, USGS, NGA, NASA, CGIAR, N Robinson, NCEAS, NLS, OS, NMA, Geodatastyreisen, Rijkswaterstaat, GSA, Geoland, FEMA, Intermap and the GIS user community. Sources: Esri, TomTom, Garmin, FAO, NOAA, USGS, © OpenStreetMap contributors, and the GIS User Community