

I. Meeting Packet



State of Florida
Public Service Commission
INTERNAL AFFAIRS AGENDA

Thursday, June 5, 2014
Immediately following Commission Conference
Room 105 - Gerald L. Gunter Building

1. Presentation by Julie Gowen, Director of Broadband Programs, Florida Department of Management Services (Attachment 1)
2. Legislative Update. (No Attachment)
3. Executive Director's Report. (No Attachment)
4. Other Matters. (No Attachment)

BB/mj

OUTSIDE PERSONS WISHING TO ADDRESS THE COMMISSION ON
ANY OF THE AGENDAED ITEMS SHOULD CONTACT THE
OFFICE OF THE EXECUTIVE DIRECTOR AT (850) 413-6463.

Attachment 1



FLORIDA DEPARTMENT of

management
SERVICES

We serve those who serve Florida

Broadband Mapping in Florida

Broadband Florida Initiative Overview

- In January of 2010, the National Telecommunications and Information Administration (NTIA) awarded the Department of Management Services (DMS) an \$8.8M grant to increase Florida's participation in the digital economy. The funding will continue until November of 2014.
- Grant funds these projects:
 - Broadband Florida Mapping Tool
 - Grants Assistance
 - Regional Planning
 - Library Assessment

Projects

- Successfully produced all deliverables per the grant award to date and is on track to fulfill the remaining commitments through the end of the grant program.
- Broadband Mapping Tool
 - Creation of the Broadband Florida Mapping Tool
- Grants Assistance
 - Creation of an E-rate Assistance Team
- Regional Planning
 - Development of the Florida Comprehensive Broadband Planning Toolkit
 - Tools help leverage existing infrastructure as well as plan for future infrastructure build out
 - Received an “Outstanding Infrastructure Plan” award in June of 2013 from the Florida Planning and Zoning Association
- Library Assessment
 - Assessed the needs and technology in place for 180 libraries throughout the state of Florida
 - Partnered with the Department of State which enabled a feet on the ground assessment
 - Libraries with speed information are posted on the Broadband Florida Mapping Tool

Looking Forward

- In March 2015, providers will submit broadband coverage data directly to the Federal Communications Commission (FCC) for each state.
- The FCC intends to make all non-confidential data publically available.
- Continued funding for education driven by the federal ConnectED program. Some funding will flow through the E-rate program.
- Reform of the current E-rate program that will emphasize funding for broadband services and contemplate new technology.

Florida Grants Program E-rate Assistance

- What is E-rate?
 - Subsidy allocated from the Universal Service Fund (USF) administered by the Universal Service Administration Company (USAC)
- What does it pay for?
 - Up to 90% of the cost for eligible technology services provided to schools and libraries

DMS E-rate Assistance Program

- Historically, approximately 37 percent of Florida's contributions are distributed to other states.
- The DMS Broadband E-rate team provides application assistance to increase the amount of money Florida receives from the fund.
- In 2013, Florida schools and libraries requested 15 percent (\$11M) more funding for telecom and Internet access than in 2012.

Purpose of the Florida Broadband Map

- Increase broadband access and adoption in Florida by identifying areas of unserved and inadequate broadband services.
- Develop a Florida broadband map which provides readily accessible information to governmental entities and Floridians.
- Provide data to the NTIA which populates the National Broadband Map

Benefits of the Florida Broadband Map

- The map provides a planning tool by detecting areas impacted by inadequate broadband coverage.
- Economic development, education, healthcare and energy efficiency rely on broadband infrastructure and the tools and knowledge of that infrastructure.
- Entities may use the map for identifying economic opportunities based on population densities and broadband infrastructure by location.
- Consumers may use the map for identification of broadband internet services available.

Functionality of the Florida Broadband Map

- Data Layers
 - Broadband service coverage include cable, DSL, fiber, fixed wireless and mobile wireless
 - Number of wireline and wireless providers by location
 - Individual provider coverage areas
 - Unserved areas by cable, DSL, fiber, fixed wireless, mobile wireless and unserved by both wireline and wireless
 - Inadequate broadband service coverage location
 - Mapped community anchor institutions (CAIs) which include government and non-government support, libraries, medical and healthcare facilities, public safety, schools and universities
 - E-rate information includes requested and committed funding by school district and fiscal year
 - Census demographics by county
 - County, census block, region and House and Senate district boundaries
 - Urban and rural identification
- Tools
 - Zoom to location by address, push pin, municipality, county or region
 - Speed test functionality to test the user's current connection speed
 - Bookmarks, search functionality, printing and feedback capabilities
 - Streetview widget allows for viewing locations from a street level perspective
 - DrawMeasure allows the user to determine distance between points and the area of selected locations

BROADBAND FLORIDA INITIATIVE

Bookmarks + Search + StreetView + Print + Feedback + DrawMeasure +

[Main Site](#)
[Data Request](#)
[Submit Comments](#)

BROADBAND DASHBOARD

Start Here	Coverage	Unserved
Speed Test	CAI	E-rate
Census	Boundaries	Help

Find Providers and Services by Address

Address:

City:

State: FL

ZIP:

Identify Providers and Services on Map

Touch pushpin to activate identify tool and then touch map location.

Find Providers and Services by Municipality

- Click to Select Municipality -

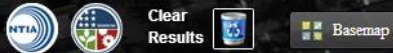
Find Providers and Services by County

- Click to Select County -

Find Providers and Services by Region

- Click to Select Region -

Data Currency: June 30, 2013



BROADBAND FLORIDA INITIATIVE

Bookmarks + Search + **StreetView** + Print + Feedback + DrawMeasure +

BROADBAND DASHBOARD

Start Here	Coverage	Unserviced
Speed Test	CAI	E-rate
Census	Boundaries	Help

- None
- Fiscal Year 2012 Funding
- Fiscal Year 2013 Funding
- District Compliance
- School Compliance



StreetView

Click the icon to the right to begin. Once you have clicked the icon, then click on a street on the map to activate Google Street View.

Data Currency: June 30, 2013

Clear Results Basemap



BROADBAND FLORIDA INITIATIVE

Bookmarks + Search + StreetView + Print + Feedback + DrawMeasure +

Main Site
Data Request
Submit Comments

BROADBAND DASHBOARD

Start Here **Coverage** Unserved
Speed Test CAI E-rate
Census Boundaries Help

Wireline Service Coverage

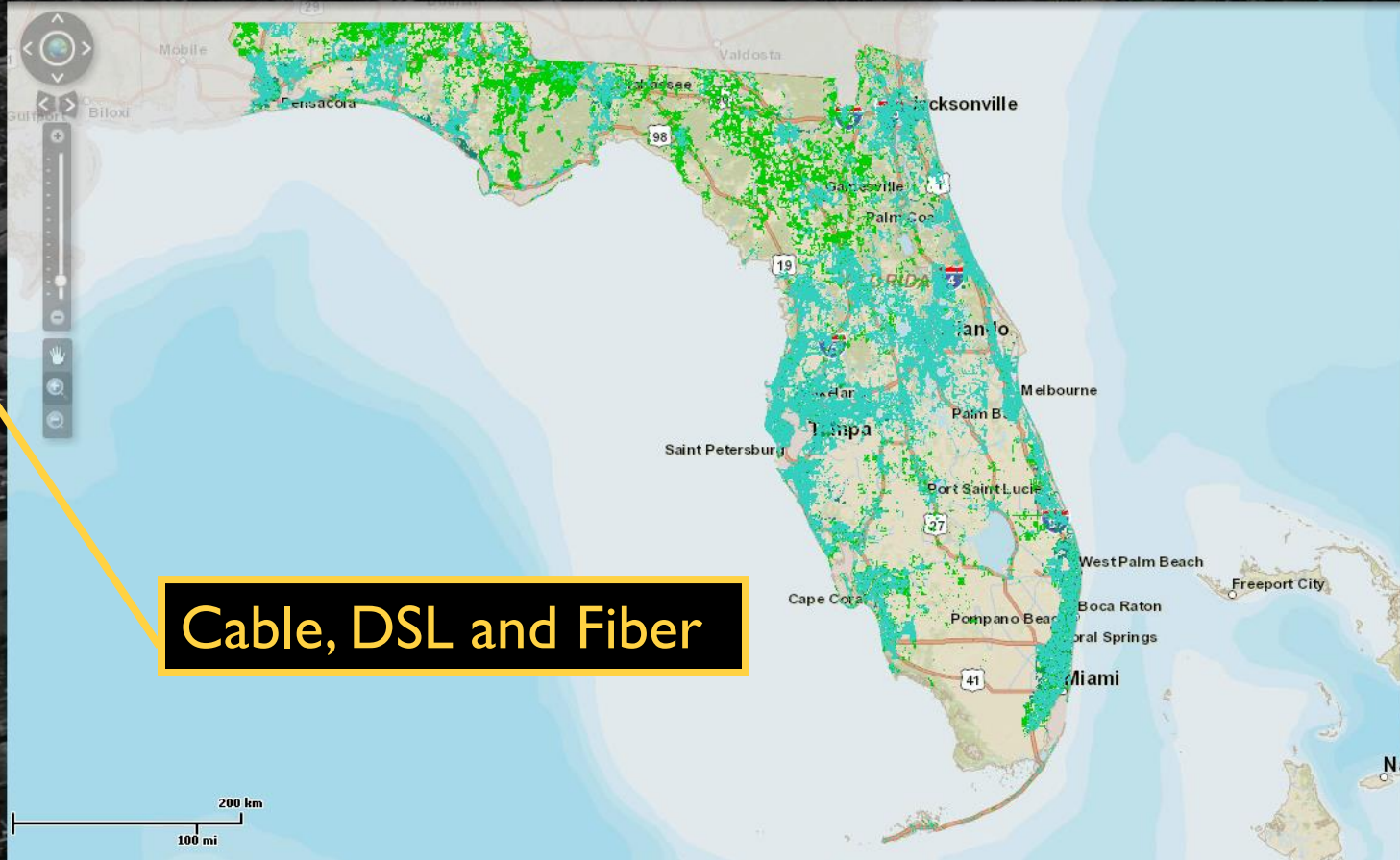
- Cable
Service delivered through coaxial cable.
- DSL
Service delivered through twisted-pair copper wire.
- Fiber
Service delivered through fiber optic cable.

Wireless Service Coverage

- Fixed Wireless
- Mobile Wireless
- Aggregated Advertised 4G LTE
- # of Wireline Providers
- # of Wireless Providers
- # of 4G LTE Providers
- Network Towers
- Individual Provider
- Broadband Infrastructure
- Broadband Networks

Data Currency: June 30, 2013

Clear Results Basemap



Cable, DSL and Fiber

BROADBAND FLORIDA INITIATIVE

Bookmarks + Search + StreetView + Print + Feedback + DrawMeasure +

Main Site
Data Request
Submit Comments

BROADBAND DASHBOARD

- Start Here
- Coverage**
- Unserviced
- Speed Test
- CAI
- E-rate
- Census
- Boundaries
- Help

Wireline Service Coverage

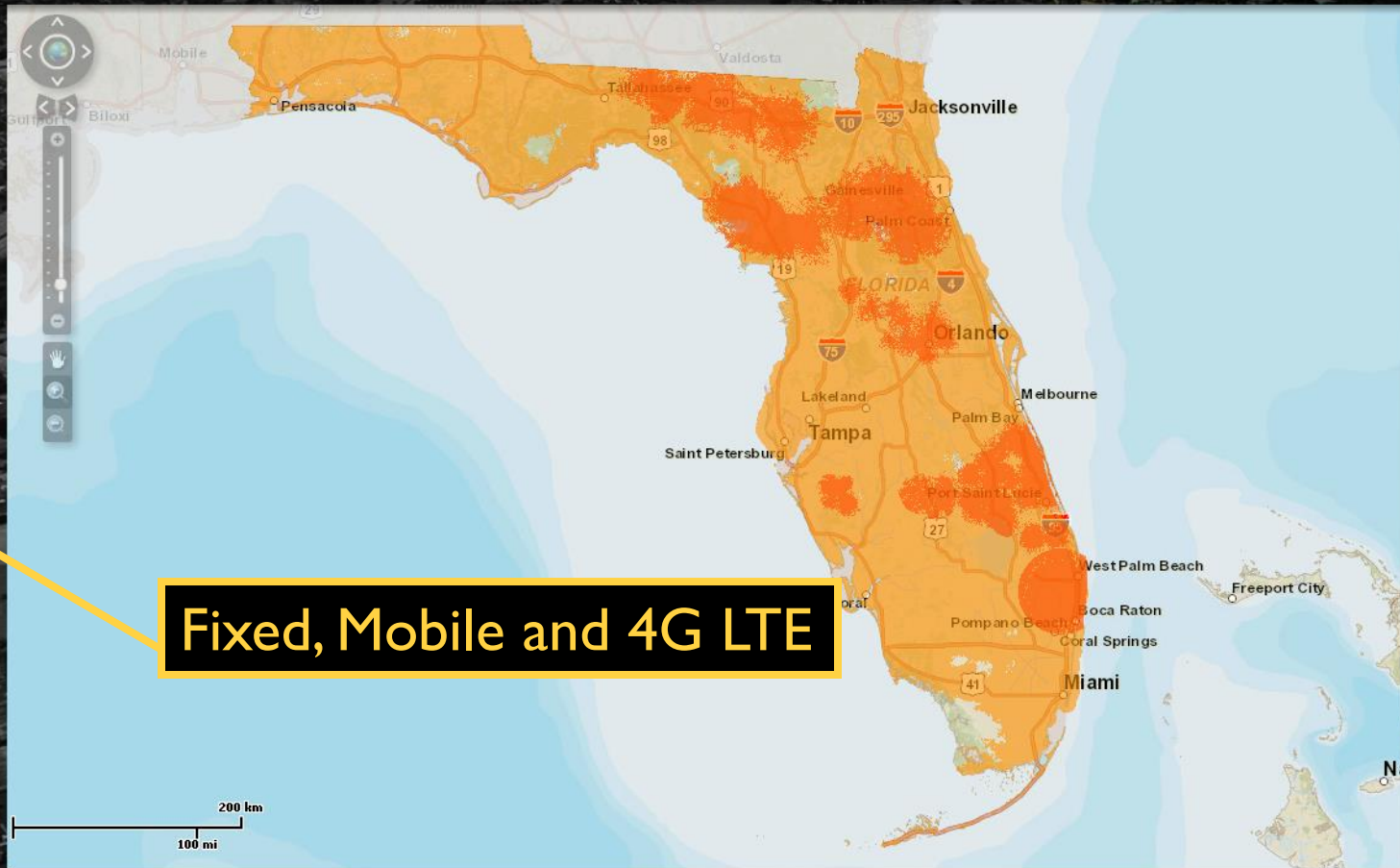
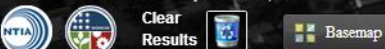
- Cable
- DSL
- Fiber

Wireless Service Coverage

- Fixed Wireless
Wireless devices or systems connecting to fixed locations.
- Mobile Wireless
Services that are broadcast via a cellular signal.
- Aggregated Advertised 4G LTE
 - AT&T 4G LTE
 - Sprint 4G LTE
 - T-Mobile 4G LTE
 - Verizon 4G LTE

- # of Wireline Providers
- # of Wireless Providers
- # of 4G LTE Providers
- Network Towers
- Individual Provider

Data Currency: June 30, 2013



Fixed, Mobile and 4G LTE

Wireless Layers

(Indicates Locations of Service Availability by Technology)

BROADBAND FLORIDA INITIATIVE

Bookmarks + Search + StreetView + Print + Feedback + DrawMeasure +

[Main Site](#)
[Data Request](#)
[Submit Comments](#)

BROADBAND DASHBOARD

Start Here	Coverage	Unserviced
Speed Test	CAI	E-rate
Census	Boundaries	Help

Unserviced by Wireline and Wireless

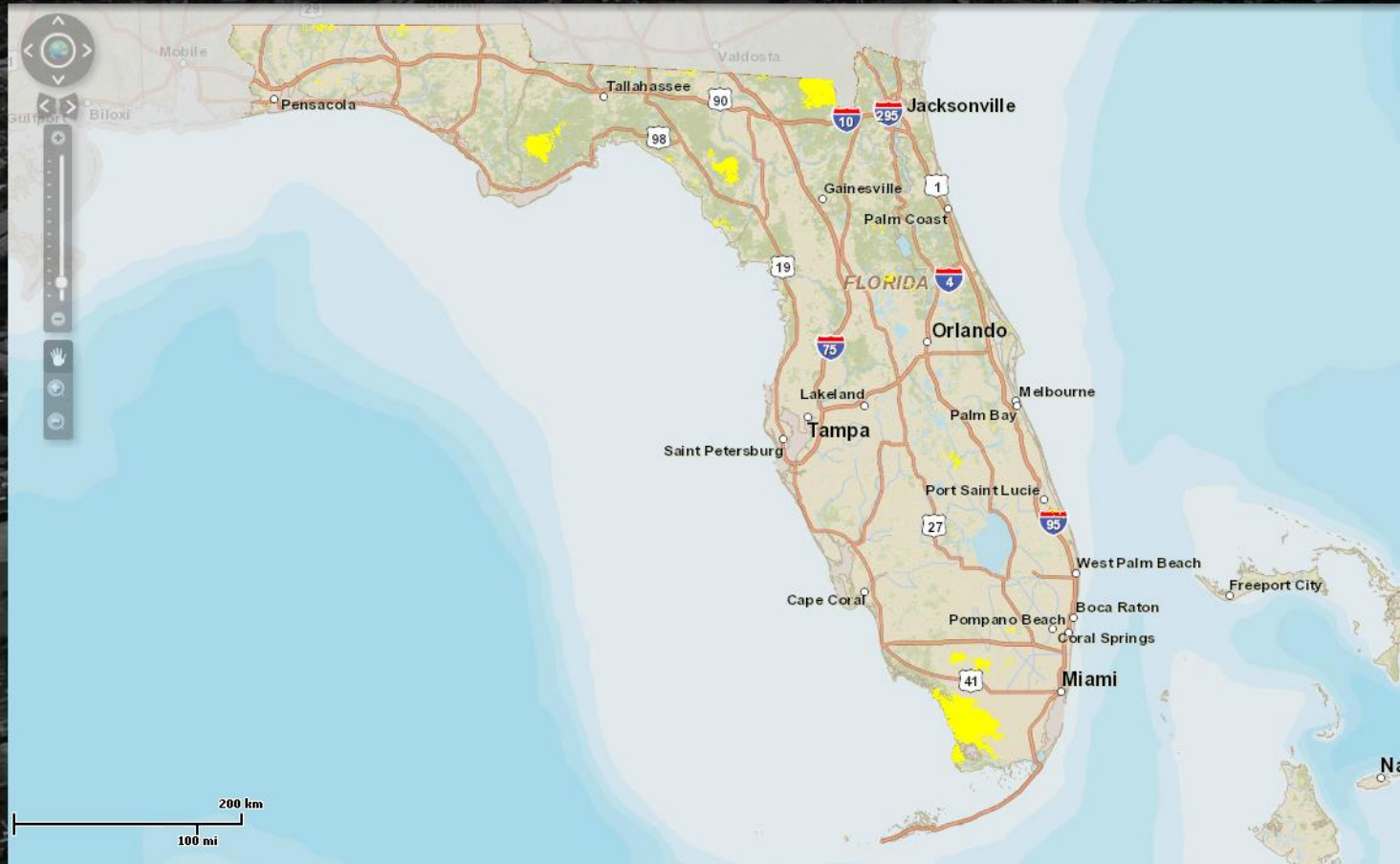
Unserviced +
Areas with no Broadband services available.

Unserviced Wireline Areas

- Cable
- DSL
- Fiber

Unserviced Wireless Areas

- Fixed Wireless
- Mobile Wireless
- Inadequate Broadband Coverage



Data Currency: June 30, 2013



Clear Results

Basemap

200 km
100 mi

Unserviced

(Indicates Areas Unserviced by Wireless and Wireline Technology)

BROADBAND FLORIDA INITIATIVE

Bookmarks + Search + StreetView + Print + Feedback + DrawMeasure +

Main Site
Data Request
Submit Comments

BROADBAND DASHBOARD

Start Here	Coverage	Unserved
Speed Test	CAI	E-rate
Census	Boundaries	Help

Community Anchor Institution (CAI)

Note: Zoom in beyond 1:500,001 to display CAI broadband information on mouse click.

- Government Support
- Non-government Support
- Library
- Medical/Healthcare
- Public Safety

School (K-12)

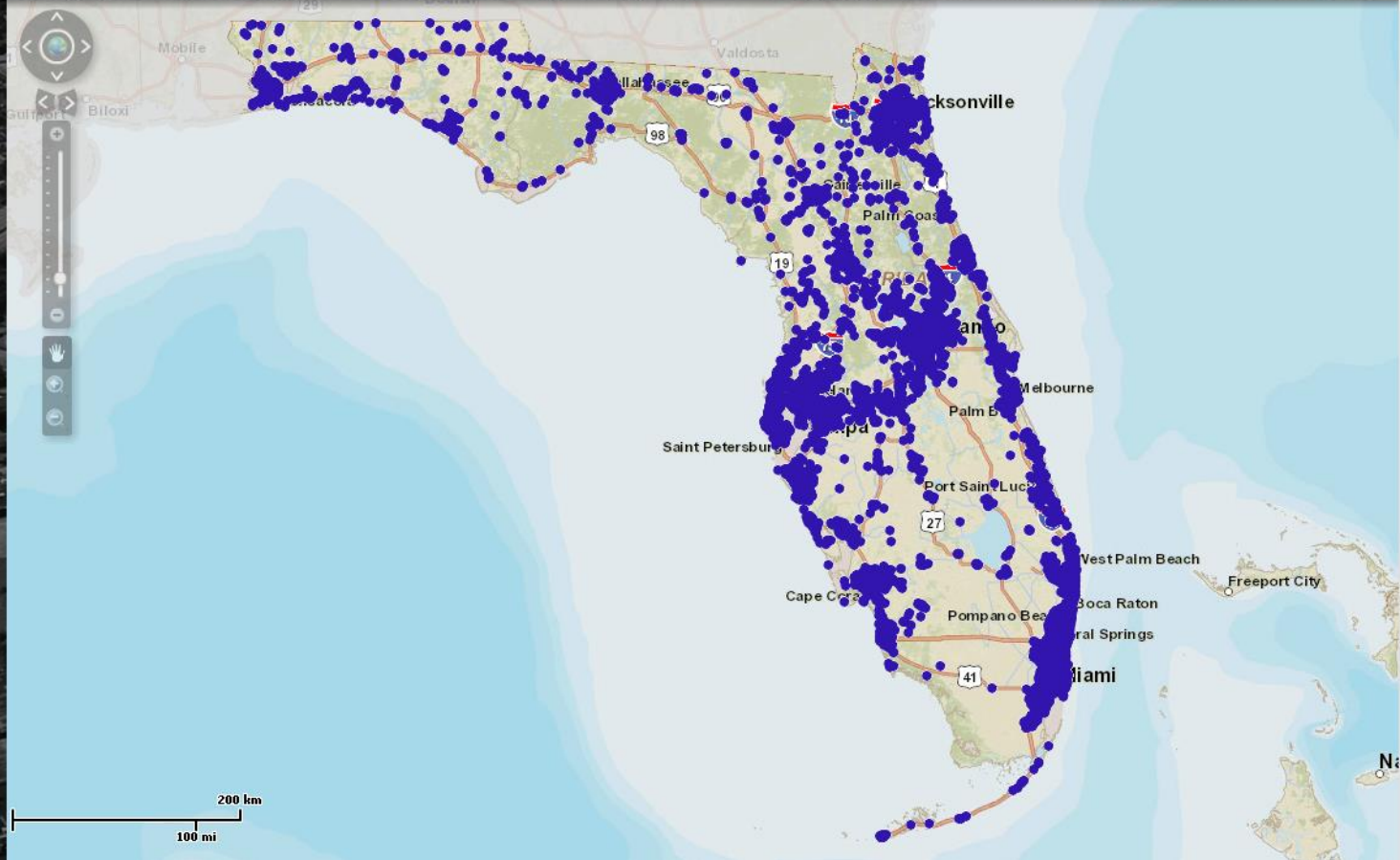
- Zoomed in beyond 1:500,000
- Zoomed out beyond 1:500,001

University/College

CAI using SUNCOM services

- All SUNCOM Florida Network
- SUNCOM Government Support
- SUNCOM Non-Government Support
- SUNCOM Library
- SUNCOM Medical/Healthcare
- SUNCOM Public Safety
- SUNCOM School (K-12)
- SUNCOM University/College

Data Currency: June 30, 2013



Schools

(Public, Private, Charter and Magnet)

BROADBAND FLORIDA INITIATIVE

Bookmarks + Search + StreetView + Print + Feedback + DrawMeasure +

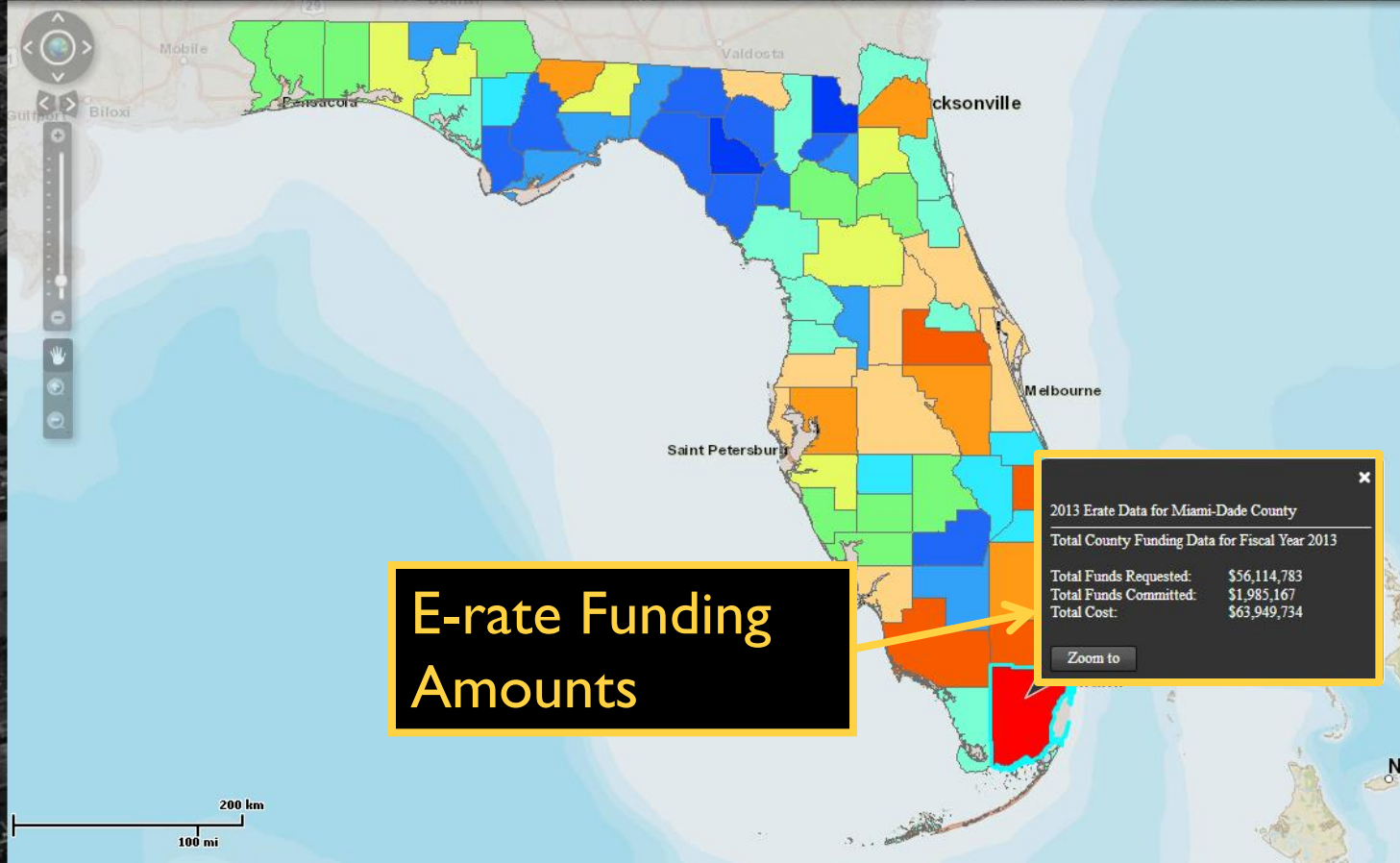
Main Site
Data Request
Submit Comments

BROADBAND DASHBOARD

Start Here Coverage Unserviced
Speed Test CAI **E-rate**
Census Boundaries Help

- None
 - Fiscal Year 2012 Funding
 - Fiscal Year 2013 Funding
 - Requested Funding
 - Total E-rate
 -
- | | |
|--|-----------------------------------|
| | \$0.01 - \$76,000.00 |
| | \$76,000.01 - \$164,000.00 |
| | \$164,000.01 - \$245,000.00 |
| | \$245,000.01 - \$386,000.00 |
| | \$386,000.01 - \$570,000.00 |
| | \$570,000.01 - \$1,063,000.00 |
| | \$1,063,000.01 - \$1,641,000.00 |
| | \$1,641,000.01 - \$2,442,000.00 |
| | \$2,442,000.01 - \$9,979,000.00 |
| | \$9,979,000.01 - \$25,704,000.00 |
| | \$25,704,000.01 - \$56,115,000.00 |
- Internet Access
 - Telecom Service
 - Internal Connections
 - Internal Connections Maintenance
 - P1
 - P2
 - Committed Funding

Data Currency: June 30, 2013



E-rate Funding Amounts

2013 E-rate Data for Miami-Dade County

Total County Funding Data for Fiscal Year 2013

Total Funds Requested:	\$56,114,783
Total Funds Committed:	\$1,985,167
Total Cost:	\$63,949,734

[Zoom to](#)

E-rate Funding

(By Fiscal Year, Requested and Committed Funding, and Service Category)¹⁶

How You Can Reach Us

Name	Position	Email
Julie Gowen	Director of Broadband Programs	Julie.Gowen@dms.myflorida.com
Adolfo Arauz	E-rate Coordinator	Adolfo.ArauzTEL@dms.myflorida.com
Bridget Duff	E-rate Coordinator	Bridget.Duff@dms.myflorida.com
Lauren Harris	E-rate Coordinator	Lauren.Harris@dms.myflorida.com
Lyle Walker	E-rate Coordinator	Lyle.Walker@dms.myflorida.com
Ed Peters	Director of the Division of Telecommunications	Ed.Peters@dms.myflorida.com

II. Outside Persons Who Wish to Address the Commission at Internal Affairs

***OUTSIDE PERSONS WHO WISH
TO ADDRESS THE COMMISSION AT***

***INTERNAL AFFAIRS
June 5, 2014***

<u>Speaker</u>	<u>Representing</u>	<u>Item #</u>
Julie Gowen	Department of Management Services	1

III. Supplemental Materials Provided During Internal Affairs

The records reflect that there were no supplemental materials provided to the Commission during this Internal Affairs meeting.

IV. Transcript

1 BEFORE THE
2 FLORIDA PUBLIC SERVICE COMMISSION

3
4
5
6 PROCEEDINGS: INTERNAL AFFAIRS

7
8 COMMISSIONERS
9 PARTICIPATING: CHAIRMAN ART GRAHAM
10 COMMISSIONER LISA POLAK EDGAR
11 COMMISSIONER RONALD A. BRISÉ
12 COMMISSIONER EDUARDO E. BALBIS
13 COMMISSIONER JULIE I. BROWN

14 DATE: Thursday, June 5, 2014

15 TIME: Commenced at 11:28 a.m.
16 Concluded at 11:45 a.m.

17 PLACE: Gerald L. Gunter Building
18 Room 105
19 2540 Shumard Oak Boulevard
20 Tallahassee, Florida

21 REPORTED BY: LINDA BOLES, CRR, RPR
22 Official FPSC Reporter
23 (850) 413-6734
24
25

P R O C E E D I N G S

1
2 **CHAIRMAN GRAHAM:** Okay. Let the record show
3 it is Thursday, June 5, and this is the Internal Affairs
4 meeting.

5 We have four items on the agenda, so let's
6 start with Item Number 1, a presentation from Julie --
7 is it Godwin [sic]?

8 **MS. GOWEN:** Gowen.

9 **CHAIRMAN GRAHAM:** Gowen, from DSM [sic].
10 Julie, come on down.

11 **COMMISSIONER BROWN:** DMS.

12 **CHAIRMAN GRAHAM:** DMS. What did I say?

13 **COMMISSIONER BROWN:** DSM.

14 **CHAIRMAN GRAHAM:** Oh, I don't know what's on
15 my mind.

16 (Laughter.)

17 **MS. GOWEN:** Good morning. How are you?

18 **COMMISSIONER BROWN:** Good. Thank you.

19 **MS. GOWEN:** All right. So the Department of
20 Management Services was awarded a grant by the NTIA for
21 \$8.8 million to support projects to increase Florida's
22 participation in the digital economy.

23 The projects included in this grant are the
24 Broadband Mapping Tool, the E-rate Team for grants
25 assistance, and Regional Planning Toolkit, and a library

1 assessment for libraries in Florida.

2 In the upcoming year the mapping data that
3 we've been collecting for the past couple of years will
4 be transferred to the FCC through the Form 477 to
5 populate the National Broadband Map. Also, the E-rate
6 program will be having program rule updates, which will
7 provide changes and emphasize broadband technology
8 services.

9 E-rate, y'all probably know about E-rate. But
10 if you don't, it's a subsidy for schools and libraries
11 which can provide up to 90 percent of the costs for
12 eligible technology services.

13 DMS, we currently with this project have an
14 E-rate Team which provides application assistance, and
15 it's to increase the amount of money that we receive
16 back to Florida schools and libraries. In the past,
17 Florida has been a contributor state to the Universal
18 Service Fund where most of our money goes out, and we
19 have not been receiving the full amount back. That's
20 why the E-rate Team has been so important.

21 The map itself is one of our main projects,
22 and it's to collect data on broadband coverage and
23 service availability. The data then populates the
24 Florida map and also gets sent to the NTIA to populate
25 the National Broadband Map. And this is to increase the

1 broadband access and adoption in Florida.

2 Some of the benefits of the Florida map, we
3 have with the Florida map several different layers that
4 are more in-depth for Florida, and it is to provide
5 information as a tool for economic opportunities. Also
6 to Florida citizens to show where broadband services are
7 available.

8 I won't go through all these line items, but
9 the map has many different tools which you can utilize
10 to draw and measure, to print, and to see street views.
11 Also, the data layers that we have, you can overlay the
12 data and provide analysis on them.

13 Here's the map. So the map, the background of
14 the map can be changed to have many different base maps.
15 It has a toolbar at the top, which are the tools that I
16 was talking about. And the tools itself are like the
17 bookmarks, searching, the street view, draw and measure
18 where you can zoom into a location and outline certain
19 features of the map and print it out so that you can
20 show specific things.

21 On the left side is -- oh, there's a street
22 view widget. Sorry. There's an example of one of the
23 widgets.

24 On the left side is the Broadband Dashboard.
25 The Broadband Dashboard is where we show our data

1 layers. And under the dashboard, it's hard to see but
2 there's nine tabs which have the data separated into
3 many different categories. With the categories you can
4 turn on and off layers, you can adjust the transparency,
5 and this functionality allows you to put on the cable,
6 put on the DSL, you know, make it transparent so you can
7 see the overlays. So it's pretty, pretty interesting.
8 That's the example of the wireline layers.

9 This is an example of our mobile and fixed
10 wireless coverage for Florida. We also have layers for
11 the LTE. Those aren't turned on in this picture.

12 So one of the things about the data is what
13 the NTIA has as broadband availability. Broadband
14 availability is defined as data transmission to and from
15 the Internet at 768 megabits per second -- I mean,
16 kilobits per second, excuse me, downstream and 200
17 kilobits per second upstream to the end users within
18 seven to ten business days. So with the unserved layer
19 there are several different layers that you can check on
20 and off by technology type, which shows where we do not
21 have broadband availability.

22 We also have mapped our community anchor
23 institutions. These are government and non-government
24 entities that provide support: libraries, schools,
25 public safety, healthcare, and colleges. And in this

1 layer, you can turn them on and off and show as many as
2 you would like.

3 Along with our E-rate program, we incorporated
4 E-rate layers to track the E-rate funding between
5 different fiscal years and by county. So we have from
6 2012, 2013, and now 2014 it will show our requested
7 funding and our committed funding through the process by
8 county. And this is my team where everybody has helped
9 for E-rate and for mapping, and this is how you can
10 contact us.

11 **CHAIRMAN GRAHAM:** I want to thank you, thank
12 you very much for the presentation. I tell you one
13 thing, that this group right here is very, very, very
14 familiar with the Universal Service Fund, and we're very
15 excited to see that it got expanded to the Internet, and
16 especially Commissioner Brisé, who lives and breathes
17 this stuff day in and day out. That being said,
18 Commissioner Brisé.

19 **COMMISSIONER BRISÉ:** Sure. Thank you.

20 Thank you for your presentation. On your last
21 slide or your prior-to-last slide, looking at some of
22 the areas where there is the lowest amount of funding
23 for E-rate, so thinking about some of the consortia from
24 the northeast end -- I mean, northwest end of Hendry
25 County, what can we do to help them pull down more

1 dollars -- because their challenge is that they don't
2 have the actual physical student bodies there but they
3 have such a large land mass -- in order to help supply
4 their needs in terms of broadband and so forth? Do you
5 have any suggestions?

6 **MS. GOWEN:** Well, it is based on the National
7 School Lunch Program, so it's based on need. I would
8 have to look at the need to see where we could help.

9 One thing is making sure that the applications
10 are filled out appropriately. I mean, that's a big
11 point of the E-rate Team. Getting into it and looking
12 at the data for the map I learned a lot about the
13 process, and it is very in-depth, like filling out
14 taxes. So that is one of the key things is making sure
15 that there's somebody available to be able to answer
16 questions and to provide assistance with those forms.

17 The other option is to also look at the
18 funding that they have and are the people with need and
19 the schools with need actually applying for the amounts
20 that they can apply for. So that's another thing to
21 look at with that. There's several different tools and
22 things, but most of it is getting the information out
23 there and being available to answer questions and help.

24 **COMMISSIONER BRISÉ:** All right. I serve on
25 the USAC board, and one of the challenges that we often

1 hear is from these rural districts that --

2 **MS. GOWEN:** Right.

3 **COMMISSIONER BRISÉ:** -- you know, in order for
4 them to actually provide a service, it probably needs
5 some legislation and so forth to change the dynamics of
6 the rules. But we -- my office will be reaching out to
7 you and seeing how we can work with some of these
8 consortia who have reached out to me for assistance.

9 **MS. GOWEN:** I look forward to that.

10 **COMMISSIONER BRISÉ:** Okay.

11 **MS. GOWEN:** Thank you.

12 **CHAIRMAN GRAHAM:** Any other Commissioners?

13 Well, thank you very much.

14 **MS. GOWEN:** Thank you.

15 **CHAIRMAN GRAHAM:** Thank you for your time.

16 Okay. Next on the agenda is legislative
17 update.

18 **MS. PENNINGTON:** Good morning, Commissioners.

19 I just only have one update for you this morning. I
20 just wanted to let you know that Senate Bill 272 that
21 Senator Simpson sponsored went to the Governor this
22 morning, and he has until June 20th to act on it.

23 We have heard some rumblings about some of the
24 legal issues in the bill, but we don't have an idea
25 right now what the Governor intends to do with the bill.

1 That's kind of it, other than I'm sure you
2 guys are going to do an update on the budget has been
3 signed and vetoed and all of that.

4 **MR. BAEZ:** That's the, that's the update on
5 the budget.

6 **MS. PENNINGTON:** And we're okay.

7 (Laughter.)

8 **MR. BAEZ:** It all ends there. It was signed.

9 **MS. PENNINGTON:** And we're okay on that, so.

10 **COMMISSIONER EDGAR:** If I could just --

11 **CHAIRMAN GRAHAM:** Yes.

12 **COMMISSIONER EDGAR:** You said that the water
13 bill has gone to the Governor?

14 **MS. PENNINGTON:** Yes, ma'am. It went this
15 morning.

16 **COMMISSIONER EDGAR:** So what's the date that
17 he has to act?

18 **MS. PENNINGTON:** June 20. It went this
19 morning.

20 **COMMISSIONER BROWN:** With regard to Senate
21 Bill 272 -- thanks -- with regard to that, you've said
22 that you've heard rumblings, rumblings --

23 **MS. PENNINGTON:** Some rumblings.

24 **COMMISSIONER BROWN:** -- about the legal
25 issues. Is that from the Governor's Office or from

1 internal?

2 **MS. PENNINGTON:** We've had some questions from
3 the Governor's office, and Curt had a conversation with
4 one of the Deputy General Counsels last week. They had
5 a couple of questions about the possibility of
6 constituting a taking in a couple of areas. I don't
7 know what they're going to do with that information, but
8 they are aware of that.

9 **COMMISSIONER BROWN:** Thank you.

10 **CHAIRMAN GRAHAM:** Any other questions?

11 Thank you very much for the update.

12 **MS. PENNINGTON:** Thank you.

13 **CHAIRMAN GRAHAM:** Executive Director report.

14 **MR. BAEZ:** Commissioners, Chairman, nothing
15 specific to report. But you all are -- you all should
16 be aware by now by email at least from, from Mark
17 Futrell that the carbon emissions rule was put out.
18 We're in the middle of coordinating with DEP. I think
19 there's a call next week?

20 **MR. FUTRELL:** We're trying to arrange that.

21 **MR. BAEZ:** We're in the process of arranging a
22 conference call for next week with DEP to coordinate
23 whatever implementation issues belong to us and
24 otherwise. So we will have a report to you as soon as,
25 as soon as we have a better idea of what it is that

1 we're doing. So in all candor, we're still digesting
2 it, as I think many are, so.

3 **CHAIRMAN GRAHAM:** Well, if we have to vote, I
4 say all implementation issues belong to them.

5 **MR. BAEZ:** There will be coin flips involved,
6 I'm sure. Wish us luck.

7 **CHAIRMAN GRAHAM:** Any questions of the
8 Executive Director?

9 Yes, Commissioner Balbis.

10 **COMMISSIONER BALBIS:** Mr. Baez, concerning the
11 EPA rule, it's my understanding it's not been published
12 in the *Federal Register*.

13 **MR. BAEZ:** We're waiting, we're waiting on all
14 of those things. But there's enough detail that's been
15 put out in order for us to be able to start, start
16 early, really get ahead of the curve on discussion of
17 what, what our implementation responsibilities may or
18 may not be.

19 I do -- you, you actually allude to the point
20 that there is still a whole lot of discussion -- and I'm
21 not the expert on federal process and I'm not sure if
22 there's anybody here in the room that is -- but you'll
23 be hearing more and more about what the, what's the
24 federal process going forward once the rule is
25 published, and then there's a time for comments and

1 challenges, I believe, and the "L" word as well. So
2 there's no telling how close we're going to run up to
3 that 2016 implementation date, and even at that date is,
4 is a hard date as a result of the process that's still
5 left, so.

6 **COMMISSIONER BALBIS:** Thank you.

7 **CHAIRMAN GRAHAM:** Any other questions of the
8 Executive Director?

9 **MR. KISER:** Mr. Chairman?

10 **CHAIRMAN GRAHAM:** Yes.

11 **MR. KISER:** Many of you might know that
12 Braulio's office put out the list the other day of the
13 people who were awarded the bonus from last year's
14 legislative budget to our employees. And just for
15 whatever input it's worth, that I would say from our
16 division they weren't real pleased with that process
17 about how it was done, the, quote, peer review. They
18 seemed to be uncomfortable voting for their fellow
19 employees to receive the bonus or not. Most of the
20 comments that I received was that they would not, they
21 would prefer not to have that voting part of it -- to
22 have management make the decision as to who was entitled
23 to that bonus. I don't think they continued it this
24 year, did they, Braulio?

25 **MR. BAEZ:** I don't have an answer for it. All

1 I, all I want to do is -- this is sort of like Christmas
2 in June because I get to, I get to take absolutely no
3 responsibility for this, for the way this was, you know,
4 set up. We just had implementation. There are some
5 unfortunate and unintended consequences. I would agree
6 with the General Counsel on that.

7 **COMMISSIONER EDGAR:** I'd just, Mr. Chairman,
8 point out that the Legislature put in place a pretty
9 similar process approximately ten to 12 years ago for
10 all agencies. And, you know, in a prior job having
11 additional supervisory responsibilities I was very
12 involved in that process. And back then there were
13 pros, there were cons, there were people who liked it,
14 there were people who didn't like it. It was only for
15 one or two years. And I don't recall the Legislature
16 asking us, quite frankly, how we would like to give
17 bonuses. But it's always nice --

18 **MR. BAEZ:** There wasn't a whole lot of input,
19 Commissioner.

20 **COMMISSIONER EDGAR:** It's always nice to
21 recognize the good work that many of our staff --

22 **MR. BAEZ:** That is the only happy ending in
23 all of this is that there is, clearly at the end of the
24 road there's recognition for folks, and far too few
25 folks, I might add as an editorial, that really do

1 deserve it. So that is the silver lining in all of
2 this.

3 **CHAIRMAN GRAHAM:** I think those people that
4 all got the check, it's a very happy ending for them.

5 **MR. BAEZ:** Absolutely. No disagreement there.

6 **CHAIRMAN GRAHAM:** Okay. Any other questions
7 for the Executive Director, or comments?

8 Okay. Other matters. Anything else to come
9 before us?

10 Seeing none, we are adjourned. Thank you very
11 much.

12 (Internal Affairs adjourned at 11:45 a.m.)

13

14

15

16

17

18

19

20

21

22

23

24

25

1 STATE OF FLORIDA)
 : CERTIFICATE OF REPORTER
2 COUNTY OF LEON)

3
4 I, LINDA BOLES, CRR, RPR, Official Commission
5 Reporter, do hereby certify that the foregoing
6 proceeding was heard at the time and place herein
7 stated.

8 IT IS FURTHER CERTIFIED that I stenographically
9 reported the said proceedings; that the same has been
10 transcribed under my direct supervision; and that this
11 transcript constitutes a true transcription of my notes
12 of said proceedings.

13 I FURTHER CERTIFY that I am not a relative, employee,
14 attorney or counsel of any of the parties, nor am I a
15 relative or employee of any of the parties' attorney or
16 counsel connected with the action, nor am I financially
17 interested in the action.

18 DATED THIS 11th day of June, 2014.

19
20
21
22
23
24
25
Linda Boles

LINDA BOLES, CRR, RPR
FPSC Official Commission Reporters
(850) 413-6734