

Storm Tips: Before and After

PSC's Hurricane House

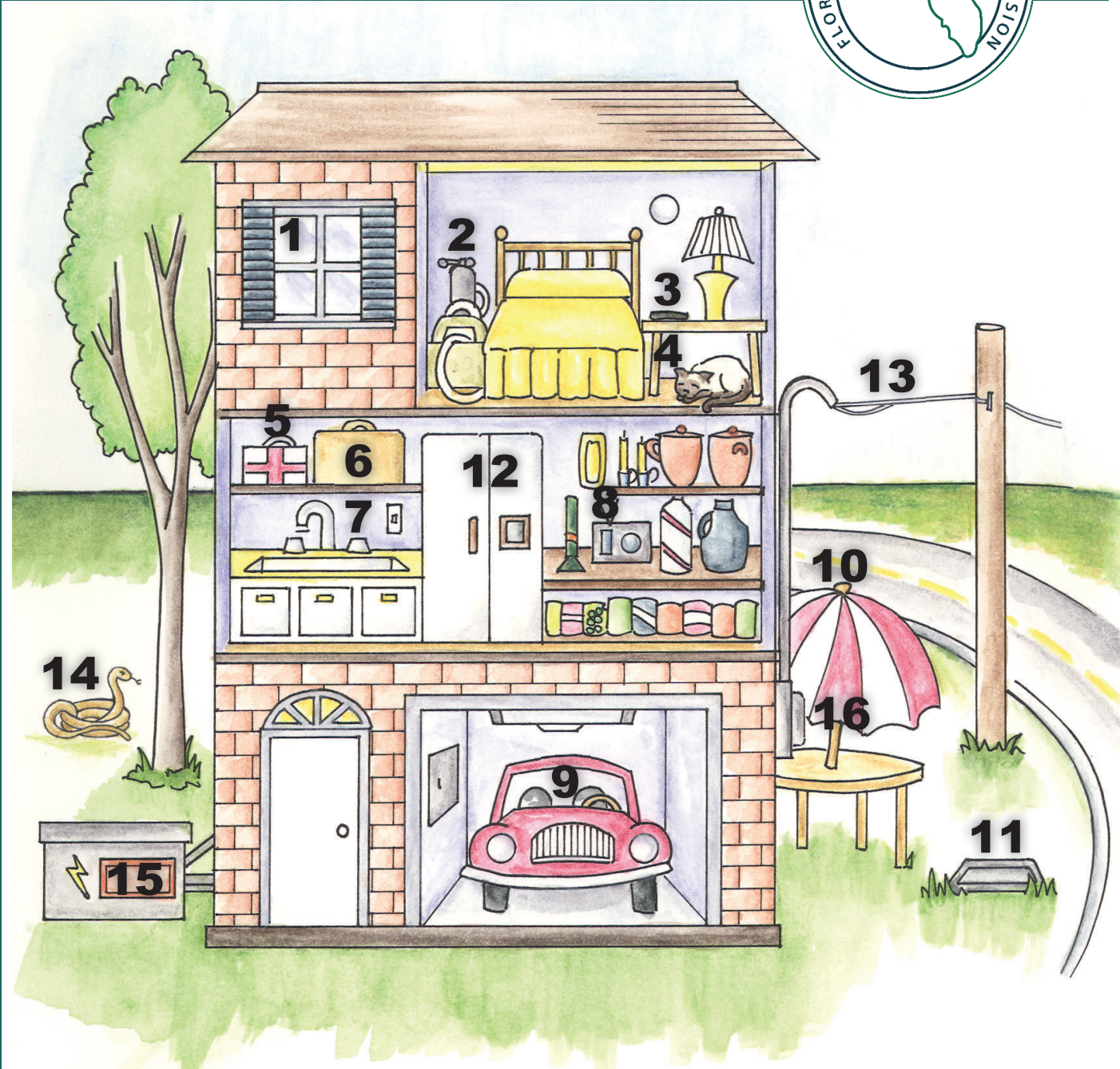


BEFORE

- 1. Shutters** - Install impact-resistance shutters on all windows and glass doors for protection.
- 2. Oxygen Generator** - Plan for backup power for medically essential equipment.
- 3. Cellular Phones** - Charge cell phones before the storm; have extra batteries and a car charger.
- 4. Pets** - Check which evacuation shelters allow pets.
- 5. First Aid Kit** - Keep a well-stocked first aid kit in the house.
- 6. Disaster Supplies Kit** - Stock water, non-perishable food, clothing, sanitation supplies, and other basics. Keep evacuation items in a waterproof container.
- 7. Water Supply** - Store a three-day water supply: at least one gallon per person per day.
- 8. Battery Operated Radios/Flashlights** - Have extra batteries available.
- 9. Automobile** - Plan an evacuation route. Fuel your vehicle. Charge electric vehicles.
- 10. Outdoor Objects** - Anchor outdoor items or bring them inside to avoid damage.
- 11. Main Water Valve** - Locate the water shutoff valve to the house in case of emergency.

AFTER

- 12. Refrigerator** - Preserve food longer by keeping the door closed.
- 13. Power Lines** - Avoid all downed power lines and report them to the utility company.
- 14. Displaced Wildlife** - Beware of wildlife driven to higher ground after storm flooding.
- 15. Portable Generator** - Always run generators outdoors. Never connect a generator directly to the house's wiring.
- 16. Electric Meter** - Check meter box and surrounding equipment for damage before power is turned back on after an outage.



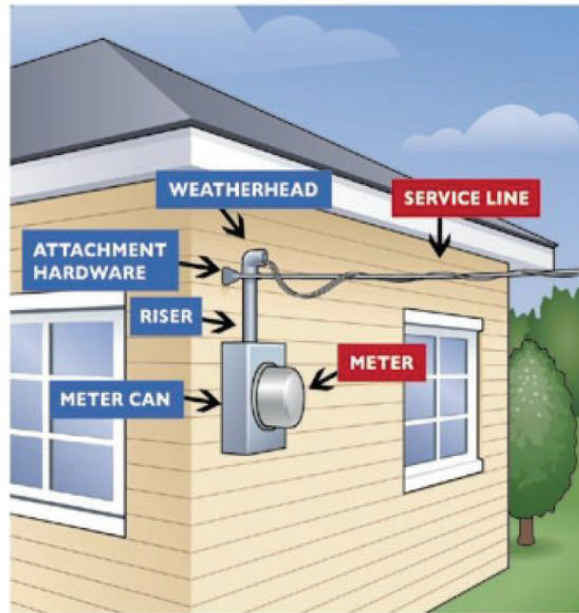
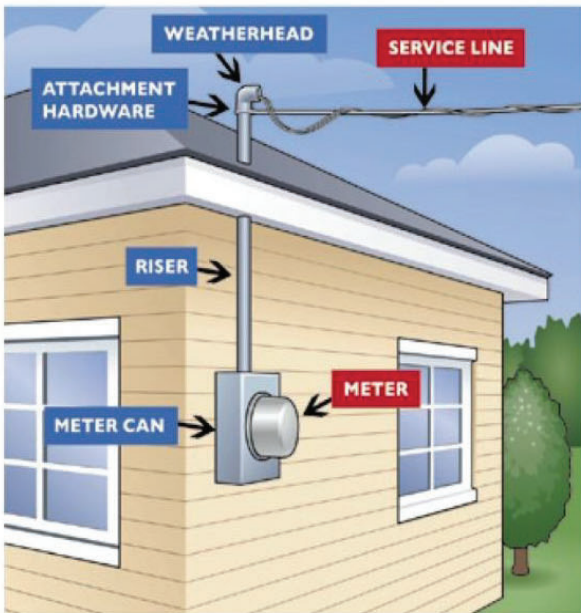
Storm Tips: Before and After



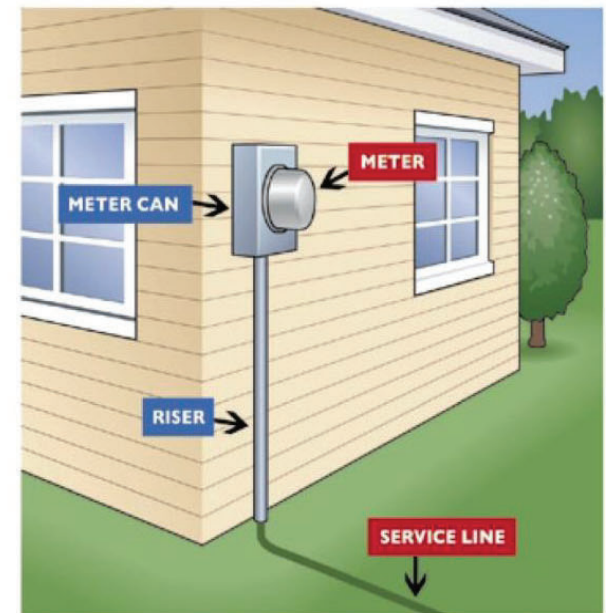
Who is Responsible for Fixing What?

If your electrical components are damaged, you may be responsible for repairs. Identify your type of service connection below to learn what your responsibilities are.

OVERHEAD DISTRIBUTION



UNDERGROUND DISTRIBUTION



Courtesy: Kissimmee Utility Authority

 **CUSTOMER RESPONSIBILITY**  **UTILITY RESPONSIBILITY**