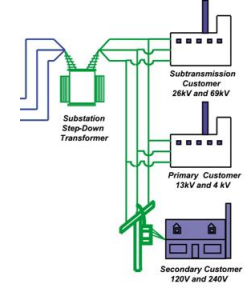
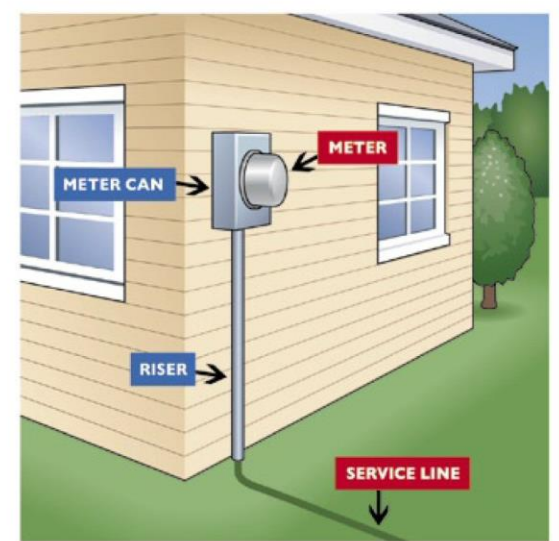
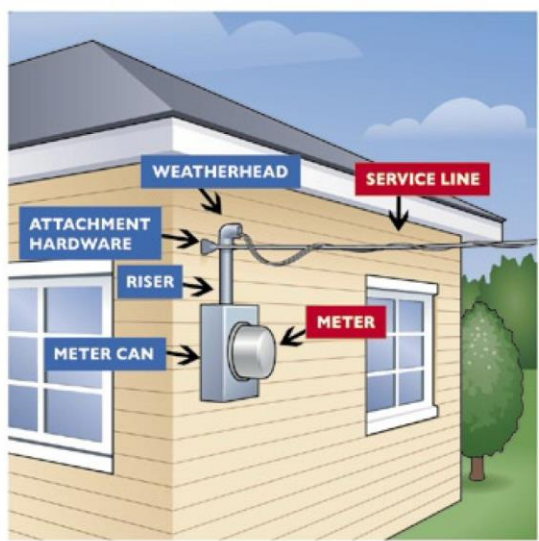
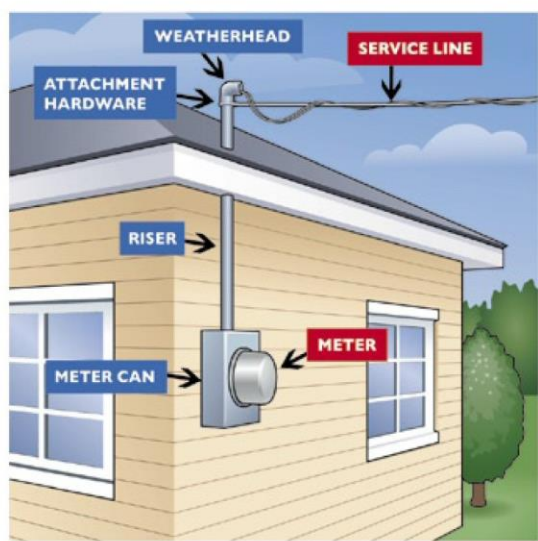


Distribution



WHO IS RESPONSIBLE FOR FIXING WHAT?

If your electrical components are damaged, you may be responsible for repairs. Identify your type of service connection below to learn what your responsibilities are.



Courtesy: Kissimmee Utility Authority

■ CUSTOMER RESPONSIBILITY ■ UTILITY RESPONSIBILITY