



Florida Public Service Commission

SPECIAL REPORT

MAY / JUNE 2007

Application for a Rate Increase in
Alachua, Brevard, Highlands, Lake, Lee, Marion, Orange, Palm Beach, Pasco,
Polk, Putnam, Seminole, Sumter, Volusia, and Washington Counties by

Aqua Utilities Florida, Inc.

DOCKET NO. 060368-WS

On December 1, 2006, Aqua Utilities Florida, Inc. (AUF or utility) filed an application with the Florida Public Service Commission (Commission) for an increase in its water and wastewater rates. AUF provides water and wastewater service in 80 service areas (56 water and 24 wastewater systems) in 15 counties: Alachua, Brevard, Highlands, Lake, Lee, Marion, Orange, Palm Beach, Pasco, Polk, Putnam, Seminole, Sumter, Volusia, and Washington.

The utility is requesting rates to recover operating expenses on a going-forward basis and to generate a fair rate of return on its investment. In its application, AUF is requesting a total increase of \$4,249,358 for its water systems and \$3,048,935 for its wastewater systems. The utility is also requesting county-wide uniform rates for its systems in the respective counties. In addition, the utility requested interim rates. The Commission granted an interim rate increase on March 15, 2007.

In its filing, the utility is using a projected test year ending December 31, 2007. The test year is a 12-month period used in ratemaking proceedings to compute current levels of investment and income in order to determine the amount of revenue that will be required to allow the utility the opportunity to earn a fair return on its investment. The PSC staff recommends adjustments to test year data to properly reflect conditions in the future period for which the rates are being fixed.

As part of the process, the Commission has scheduled twelve customer service hearings throughout Florida. The service hearings give customers and other interested parties an opportunity to comment to the Public Service Commission on the quality of service the utility provides and the proposed rate increase. Customers may ask questions or make comments on other issues.

Customer comments, written and oral, will become part of the official record for this case and are taken into consideration to assist the Commissioners in reaching their decision. Utility customers are invited to give their feedback at the service hearings in this case. In accordance with Florida Statutes, the PSC will consider the utility's quality of service and other matters.

Detailed docket information is available on the PSC Web site at www.floridapsc.com. The Commissioners are expected to vote on the revenue requirement at the January 10, 2008, Special Agenda Conference and vote on the appropriate rates at the January 24, 2008 Special Agenda Conference.

For more information:

For technical questions:

Troy Rendell (850) 413-6934
Cheryl Bulecza-Banks (850) 413-6642

For legal questions:

Rosanne Gervasi (850) 413-6224
Katherine Fleming (850) 413-6218
Ralph Jaeger (850) 413-6234

For general questions:

Dick Durbin (850) 413-6121

Or call toll-free 1-800-342-3552

(1-800-511-0809 to fax)

E-mail: contact@psc.state.fl.us

Internet Home Page: www.floridapsc.com

Hearing Dates on Back

CUSTOMER HEARINGS

Aqua Utilities Florida, Inc.

DOCKET NO. 060368-WS

Thursday, May 10, 2007

10:00 a.m.
South Seas Island Resort
5400 Plantation Road
Captiva, FL

Friday, May 11, 2007

10:30 a.m.
Palm Beach County Library System
Green Acres Branch
3750 Jog Road
Green Acres, FL

Monday, May 14, 2007

10:00 a.m. (CST)
Washington County Commission
Commissioners' Board Room
1331 South Blvd.
Chipley, FL

Wednesday, May 16, 2007

10:00 a.m.
St. Johns Water Management District
Resource Management Building
Rooms 136 A & B
4049 Reid Street
Palatka, FL

6:00 p.m.
City Commission Chambers
Gainesville City Hall
200 E. University Avenue
Gainesville, FL

Wednesday, June 13, 2007

10:00 a.m.
Highlands County Administration Building
Board Chambers (Room B104)
600 Commerce Street
Sebring, FL

6:00 p.m.
City Commission Chambers (3rd Floor)
228 S. Massachusetts Avenue
Lakeland, FL

Wednesday, June 20, 2007

10:00 a.m. and 6:00 p.m.
West Pasco Government Center
County Commission Board Room
(Suite 160)
7530 Little Road
New Port Richey, FL

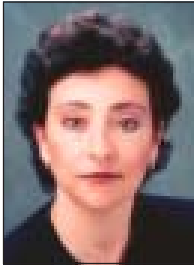
Tuesday, June 26, 2007

10:00 a.m.
Deltona Commission Chambers
Municipal Complex
2345 Providence Boulevard
Deltona, FL

Wednesday, June 27, 2007

10:00 a.m. and 6:00 p.m.
Mount Dora Community Center
Auditorium
520 Baker Street
Mount Dora, FL

P S C C O M M I S S I O N E R S



COMMISSIONER
Nancy Argenziano



COMMISSIONER
Matthew M. Carter II



CHAIRMAN
Lisa Polak Edgar



COMMISSIONER
Katrina J. McMurrin



COMMISSIONER
Nathan A. Skop

Lisa Polak Edgar was appointed to the Florida Public Service Commission by Governor Jeb Bush for a four-year term beginning January 2005; she assumed the chairmanship at the PSC in January 2006. Chairman Edgar is a member of the National Association of Regulatory Utility Commissioners Board of Directors, telecommunications committee and was appointed by the Federal Communications Commission to the Universal Service Joint Board for a three-year term beginning November 2005. Prior to her appointment, Chairman Edgar served as Deputy Secretary for Planning and Management for the Florida Department of Environmental Protection (DEP) from August 1999 through January 2005. Her responsibilities at DEP included oversight of the agency's \$2.1 billion budget, fiscal and strategic planning, accountability measures, information technology, administrative services, and coordination between the state and federal government on environmental issues, including oil and gas drilling on the Outer Continental Shelf. Prior to serving at DEP, Chairman Edgar was chief analyst on Environmental Policy for the Office of Policy and Budget, Executive Office of the Governor. Chairman Edgar was appointed by the Secretary of the U.S. Department of Interior to represent the State of Florida on the Minerals Management Service Outer Continental Shelf (OCS) Policy Committee from 1993-2004. She served on the Subcommittees on Environmental Studies in OCS Areas under Moratoria and OCS Hard Minerals. During her career in public service, Chairman Edgar has also served as senior cabinet aide in the Department of Agriculture and Consumer Services, as staff counsel and legislative analyst for the Florida Senate Committees on Reapportionment and Regulated Industries, completed the Harvard Kennedy School of Government program for Senior Executives in State and Local Government, and co-taught a special topics graduate course on the Everglades at Florida A&M University. She is a member of Leadership Florida, Class XXIV. Chairman Edgar graduated cum laude from Florida State University in 1985 with a Bachelor's degree in political science and minor in English. She studied in London during her undergraduate education and in Yugoslavia during law school. She received a juris doctorate from the Florida State University College of Law in 1988 and is a member of the Florida Bar.

Commissioner Matthew Mark Carter II was appointed to the Florida Public Service Commission by Governor Jeb Bush for a four-year term beginning January 2006. Currently, he serves on the National Association of Regulatory Utility Commissioners Committee on Water, the Committee on International Relations, and the Ad Hoc Committee on Critical Infrastructure. Commissioner Carter is the son of the late Rev. Matthew and Pearl Carter. He was born in Douglas, Georgia and educated in the public schools there. He graduated from Atkinson County High School (in Pearson). After graduation from high school, he volunteered for the United States Army. In the Army, he served in the Presidential Honor Guard in Washington, D.C. and the First Armored Division in Germany. After being honorably discharged from the Army, Commissioner Carter attended Tallahassee Community College where he graduated with honors. He then attended Florida State University and graduated with a Bachelor's of Science in Mass Communications and was commissioned a Second Lieutenant in the United States Army Reserve and later the Florida National Guard. After a tour of duty with the 124th Infantry in the Panama Canal Zone, Commissioner Carter returned to Tallahassee where he set up a public relations firm concentrating on political campaigns for over ten years. Afterward, he entered into the financial investment industry and worked as a financial consultant for Waddell & Reed, Florida Professional Services Group, and Merrill Lynch. Commissioner Carter left Merrill Lynch to complete law school at the Florida State University College of Law. After graduation, he became a member of the Florida Bar and a Minister of the Gospel of Jesus Christ. As an attorney, he specialized in business law. He also served as a communications consultant and senior manager for private industry and governmental agencies. Commissioner Carter obtained a Master's degree in Theological Science from Smith Chapel Bible College and was awarded an honorary Doctor of Divinity degree from the St. Thomas Christian College. Commissioner Carter is currently pastor of the Beulah Hill Missionary Baptist Church in Gretna, Florida, where he also serves as President of the Congress of Christian Education (Union Baptist Association) and Vice Moderator for the Gadsden County Baptist Association. He has also written the book *The 90% Rule – How to Get Out of Debt and Prosper and Why It's Important*. Commissioner Carter is married to the former Rita Taylor (of Enigma, Georgia) and they have two beautiful daughters: Pearl and Markesha.

Katrina J. McMurrin was appointed to the Florida Public Service Commission by Governor Jeb Bush for a four-year term beginning January 2006. Commissioner McMurrin serves on the National Association of Regulatory Utility Commissioners (NARUC) Committee on Consumer Affairs, the Committee on Electricity, the Subcommittee on Nuclear Issues – Waste Disposal, the Subcommittee on Education and Research, and the Task Force on Net Neutrality, as well as the Executive Committee of the Nuclear Waste Strategy Coalition. Participation in these committees affords Commissioner McMurrin the opportunity to engage in national policy issues that impact each of the industries regulated by the Commission, the state economy, and millions of Florida consumers. In the eleven years prior to appointment, Commissioner McMurrin developed extensive experience in regulatory policy issues involving energy, water, and telecommunications. From 2001 to 2005, Commissioner McMurrin served consecutive terms as Chief Advisor to Commissioners Palecki and Davidson, advising them on all Commission proceedings and policy matters. Prior to becoming a Chief Advisor, Commissioner McMurrin managed the State Liaison Section of the Commission's Division of Policy Analysis & Intergovernmental Liaison. Here, she consulted with state and local government agencies on issues such as "black water," reuse, universal service, and electric reliability. Before leading the State Liaison Section, Commissioner McMurrin served as the Commission's primary liaison on all nuclear energy matters for over three years. Additionally, she was instrumental in drafting the Commission's positions on electric industry restructuring. In recognition of her work on federal energy policy, Commissioner McMurrin was a recipient of the PSC Extraordinary Accomplishment Award in 1999 and the PSC Outstanding Achievement Award in 1997. A Northwest Florida native, Commissioner McMurrin received a Bachelor's degree in finance from Florida State University in 1994 and an MBA from FSU in 1998.

Nancy Argenziano was recently appointed to the Florida Public Service Commission by Governor Charlie Crist.

Nathan A. Skop was recently appointed to the Florida Public Service Commission by Governor Charlie Crist.

Consumer Statements at PSC Hearings

The Commission is interested in what consumers have to say about the application for a rate increase in Alachua, Brevard, Highlands, Lake, Lee, Marion, Orange, Palm Beach, Pasco, Polk, Putnam, Seminole, Sumter, Volusia, and Washington counties by Aqua Utilities Florida, Inc. The main purpose of these hearings is to receive comments from the public.

Anyone may make a statement, and speaking is an effective way to let the Commission know how you feel about the case under review. At the beginning of the hearings, procedures will be set up to establish an order for comments. PSC staff will have sign-up sheets that will be used to call consumers to speak. PSC staff will also be available to coordinate consumer comments and assist members of the public.

Any person who wishes to comment or provide information to the PSC staff regarding this matter may do so at the hearings, orally or in writing. Written comments also may be mailed to: Florida Public Service Commission, Office of Commission Clerk, 2540 Shumard Oak Boulevard, Tallahassee, Florida 32399-0850, or faxed to 1-800-511-0809. Correspondence will be placed in the file of this docket (Docket No. 060368-WS). For your convenience, a comment form is attached to this Special Report.

Any person who wishes to obtain a copy of the Commission staff's recommendation or the Commission's order in this case may do so by writing to: Florida Public Service Commission, Office of Commission Clerk, 2540 Shumard Oak Boulevard, Tallahassee, Florida 32399-0850, or by going on-line at www.floridapsc.com.

Florida Public Service Commission

2540 Shumard Oak Boulevard
Tallahassee, Florida 32399-0850

The Public Service Commission provides a staff of information specialists who are available to answer questions from Florida consumers.

To reach a consumer representative, please call the Public Service Commission during business hours at **1-800-342-3552**, or send a fax to 1-800-511-0809. See the PSC's Internet home page at www.floridapsc.com.

Residential Water Rates							
5/8 X 3/4" meter							
Docket No. 060368-WS							
	Rates Prior to Filing		Interim Rates		Requested Final		
	Base Facility	Gallonge	Base Facility	Gallonge	Base Facility	Gallonge < 6,000	Gallonge > 6,000
Alachua							
Arredondo Estates	\$13.55	\$2.30	\$17.71	\$3.01	\$22.49	\$4.20	\$5.25
Arredondo Farms	\$13.55	\$2.30	\$17.71	\$3.01	\$22.49	\$4.20	\$5.25
Brevard							
Kingswood	\$10.42	\$2.89	\$14.04	\$3.89	\$39.30	\$8.97	\$11.21
Oakwood	\$10.42	\$2.89	\$14.04	\$3.89	\$39.30	\$8.97	\$11.21
Highlands							
Lake Josephine	\$8.88	\$1.70	\$12.44	\$2.38	\$28.82	\$5.71	\$7.14
Leisure Lakes	\$7.92	\$4.79	\$10.67	\$6.45	\$28.82	\$5.71	\$7.14
Sebring Lakes	\$8.87	\$2.01	\$47.37	\$10.73	\$28.82	\$5.71	\$7.14
Lake							
Carlton Village	\$18.36	\$3.76	\$24.73	\$5.06	\$21.38	\$2.27	\$2.84
East Lake Harris	\$8.36	\$4.76	\$11.26	\$6.41	\$21.38	\$2.27	\$2.84
Fern Terrace	\$10.43	\$2.89	\$14.05	\$3.89	\$21.38	\$2.27	\$2.84
Friendly Center	\$15.53	\$4.01	\$20.92	\$5.40	\$21.38	\$2.27	\$2.84
Grand Terrace	\$9.70	\$2.08	\$13.07	\$2.80	\$21.38	\$2.27	\$2.84
Haines Creek	\$9.27	\$1.49	\$12.90	\$2.07	\$21.38	\$2.27	\$2.84
Hobby Hills	\$9.70	\$2.10	\$13.70	\$2.38	\$21.38	\$2.27	\$2.84
Holiday Haven	\$10.17	\$4.53	\$13.70	\$6.10	\$21.38	\$2.27	\$2.84
Imperial Mobile Terrace	\$10.42	\$2.89	\$14.04	\$3.89	\$21.38	\$2.27	\$2.84
JS - 48 Estates	\$14.58	\$1.99	\$17.48	\$2.39	\$21.38	\$2.27	\$2.84
JS - Kings Cove	\$7.96	\$1.28	\$11.40	\$1.83	\$21.38	\$2.27	\$2.84
JS - Summit Chase	\$9.16	\$2.62	\$11.92	\$3.41	\$21.38	\$2.27	\$2.84
Morningview	\$17.95	\$3.80	\$24.18	\$5.12	\$21.38	\$2.27	\$2.84
Palms MHP	\$7.41	\$4.86	\$9.98	\$6.55	\$21.38	\$2.27	\$2.84
Picciola Island	\$10.42	\$2.89	\$14.04	\$3.89	\$21.38	\$2.27	\$2.84
Piney Woods	\$16.01	\$2.67	\$21.57	\$3.60	\$21.38	\$2.27	\$2.84
Quail Ridge	\$21.43	\$3.45	\$28.87	\$4.65	\$21.38	\$2.27	\$2.84
Ravenswood	\$12.20	\$1.79	\$18.75	\$2.64	\$21.38	\$2.27	\$2.84
Silver Lake Estate/ Western Shores	\$7.49	\$1.28	\$10.09	\$1.72	\$21.38	\$2.27	\$2.84
Skycrest	\$14.16	\$4.15	\$19.07	\$5.59	\$21.38	\$2.27	\$2.84
Stone Mountain	\$27.04	\$2.91	\$36.42	\$3.92	\$21.38	\$2.27	\$2.84
Valencia Terrace	\$9.70	\$2.10	\$13.07	\$2.83	\$21.38	\$2.27	\$2.84
Venetian Village	\$10.08	\$3.81	\$13.58	\$5.13	\$21.38	\$2.27	\$2.84
Lee							
South Seas	-	-	-	-	-	-	-
Marion							
Ocala Oaks	\$14.42	\$1.23	\$20.21	\$1.72	\$24.12	\$2.44	\$3.04

Residential Water Rates							
5/8 X 3/4" meter							
Docket No. 060368-WS							
	Rates Prior to Filing		Interim Rates		Requested Final		
	Base Facility	Gallonge	Base Facility	Gallonge	Base Facility	Gallonge < 6,000	Gallonge > 6,000
Orange							
Tangerine	\$8.71	\$1.49	\$11.73	\$2.01	\$22.62	\$2.04	\$2.55
Palm Beach	Base Facility	Gallonge	Base Facility	Gallonge	Base Facility	Gallonge < 6,000	Gallonge > 6,000
Lake Osborne	\$4.15	\$1.99	\$8.22	\$3.94	\$24.05	\$2.68	\$3.35
Pasco	Base Facility	Gallonge	Base Facility	Gallonge	Base Facility	Gallonge < 6,000	Gallonge > 6,000
Jasmine Lakes	\$9.14	\$3.13	\$10.73	\$3.13	\$18.52	\$3.93	\$4.92
Palm Terrace	\$10.42	\$2.89	\$14.04	\$3.89	\$18.52	\$3.93	\$4.92
Zephyr Shores	\$6.18	\$4.93	\$6.53	\$5.28	\$18.52	\$3.93	\$4.92
Polk	Base Facility	Gallonge	Base Facility	Gallonge	Base Facility	Gallonge < 6,000	Gallonge > 6,000
Gibsonia Estates	\$5.38	\$0.64	\$7.25	\$0.86	\$21.75	\$2.84	\$3.55
Lake Gibson Estates	\$6.80	\$0.98	\$8.15	\$2.33	\$21.75	\$2.84	\$3.55
Orange Hill/Sugar Creek	\$9.09	\$1.33	\$12.24	\$1.79	\$21.75	\$2.84	\$3.55
Rosalie Oaks*	\$10.58	\$0.89	\$25.28	\$2.13	\$21.75	\$2.84	\$3.55
Village Water	\$12.85	\$2.49	\$18.98	\$3.68	\$21.75	\$2.84	\$3.55
Putnum	Base Facility	Gallonge	Base Facility	Gallonge	Base Facility	Gallonge < 6,000	Gallonge > 6,000
Beecher's Point	\$16.06	\$3.99	\$21.63	\$5.37	\$34.17	\$6.97	\$8.71
Hermits Cove	\$9.33	\$4.64	\$12.57	\$6.25	\$34.17	\$6.97	\$8.71
Interlachen Lakes	\$10.05	\$3.81	\$13.54	\$5.13	\$34.17	\$6.97	\$8.71
Palm Port	\$12.32	\$4.34	\$16.60	\$5.85	\$34.17	\$6.97	\$8.71
Park Manor	-	-	-	-	-	-	-
Pomona Park	\$16.01	\$2.67	\$21.57	\$3.60	\$34.17	\$6.97	\$8.71
River Grove	\$10.05	\$3.81	\$13.54	\$5.13	\$34.17	\$6.97	\$8.71
Silver Lake Oaks	\$15.48	\$4.03	\$20.85	\$5.43	\$34.17	\$6.97	\$8.71
St. John's Highlands	\$8.87	\$4.67	\$11.95	\$6.29	\$34.17	\$6.97	\$8.71
Welaka/Saratoga Harbour	\$10.05	\$4.56	\$13.54	\$6.14	\$34.17	\$6.97	\$8.71
Wootens	\$9.14	\$4.67	\$12.31	\$6.29	\$34.17	\$6.97	\$8.71
Seminole	Base Facility	Gallonge	Base Facility	Gallonge	Base Facility	Gallonge < 6,000	Gallonge > 6,000
Chuluota	\$10.05	\$3.81	\$13.54	\$5.13	\$27.42	\$2.42	\$3.02
FL Central Commerce Park	-	-	-	-	-	-	-
Harmony Homes	\$20.60	\$3.51	\$27.75	\$4.73	\$27.42	\$2.42	\$3.02
Sumter	Base Facility	Gallonge	Base Facility	Gallonge	Base Facility	Gallonge < 6,000	Gallonge > 6,000
The Woods	\$16.40	\$3.09	\$42.97	\$8.10	\$32.72	\$8.67	\$10.83
Volusia	Base Facility	Gallonge	Base Facility	Gallonge	Base Facility	Gallonge < 6,000	Gallonge > 6,000
Jungle Den	\$6.38	\$4.92	\$8.59	\$6.63	\$24.19	\$4.64	\$5.80
Tomoka/Twin Rivers	\$4.64	\$1.36	\$6.25	\$1.83	\$24.19	\$4.64	\$5.80

Residential Water Rates

5/8 X 3/4" meter

Docket No. 060368-WS

	<u>Rates Prior to Filing</u>		<u>Interim Rates</u>		<u>Requested Final</u>		
	Base Facility	Gallage	Base Facility	Gallage	Base Facility	Gallage < 6,000	Gallage > 6,000
Washington							
Sunny Hills	\$11.47	\$4.42	\$15.45	\$5.95	\$24.15	\$4.34	\$5.43

* Rosalie Oaks currently has gallonage charge of \$0.89 for gallonage usage of 0 to 5,000 gallons, a gallonage charge of \$1.12 for gallonage usage of 5,001 to 10,000 gallons and a gallonage charge of \$1.35 for gallonage usage over 10,000 gallons. For interim rates, the rates will change to \$2.13 for gallonage usage of 0 to 5,000 gallons, a gallonage charge of \$2.68 for gallonage usage of 5,001 to 10,000 gallons and a gallonage charge of \$3.23 for gallonage usage over 10,000 gallons.

** General Service rates available upon request.

Residential Wastewater Rates						
All meter sizes						
Docket No. 060368-WS						
	Rates Prior to Filing		Interim Rates		Requested Final	
	Base Facility	Gallonge	Base Facility	Gallonge	Base Facility	Gallonge
Alachua						
Arredondo Estates	\$15.02	\$3.50	\$21.69	\$5.05	\$21.12	\$10.95
Arredondo Farms	\$15.02	\$3.50	\$21.69	\$5.05	\$21.12	\$10.95
Brevard						
Kingswood	-	-	-	-	-	-
Oakwood	-	-	-	-	-	-
Highlands						
Lake Josephine	-	-	-	-	-	-
Leisure Lakes	\$16.15	\$3.27	\$23.02	\$4.66	\$13.86	\$11.42
Sebring Lakes	-	-	-	-	-	-
Lake						
Carlton Village	-	-	-	-	-	-
East Lake Harris	-	-	-	-	-	-
Fern Terrace	-	-	-	-	-	-
Friendly Center	-	-	-	-	-	-
Grand Terrace	-	-	-	-	-	-
Haines Creek	-	-	-	-	-	-
Hobby Hills	-	-	-	-	-	-
Holiday Haven	\$16.28	\$8.71	\$23.20	\$12.41	\$30.03	\$10.97
Imperial Mobile Terrace	-	-	-	-	-	-
JS - 48 Estates	-	-	-	-	-	-
JS - Kings Cove	\$9.11	\$3.20	\$13.67	\$4.80	\$30.03	\$10.97
JS - Summit Chase	\$9.37	\$2.68	\$16.06	\$4.59	\$30.03	\$10.97
Morningview	\$24.18	\$7.50	\$34.46	\$10.69	\$30.03	\$10.97
Palms MHP	-	-	-	-	-	-
Picciola Island	-	-	-	-	-	-
Piney Woods	-	-	-	-	-	-
Quail Ridge	-	-	-	-	-	-
Ravenswood	-	-	-	-	-	-
Silver Lake Estate/ Western Shores	-	-	-	-	-	-
Skycrest	-	-	-	-	-	-
Stone Mountain	-	-	-	-	-	-
Valencia Terrace	\$16.15	\$3.27	\$23.02	\$4.66	\$30.03	\$10.97
Venetian Village	\$20.27	\$5.92	\$28.89	\$8.44	\$30.03	\$10.97
Lee						
South Seas	\$28.19	\$3.88	\$57.78	\$7.95	\$108.96	\$11.72
Marion						
Ocala Oaks	-	-	-	-	-	-

Residential Wastewater Rates						
All meter sizes						
Docket No. 060368-WS						
	Rates Prior to Filing		Interim Rates		Requested Final	
	Base Facility	Gallorage	Base Facility	Gallorage	Base Facility	Gallorage
Orange						
Tangerine	-	-	-	-	-	-
Palm Beach	Base Facility	Gallorage	Base Facility	Gallorage	Base Facility	Gallorage
Lake Osborne	-	-	-	-	-	-
Pasco	Base Facility	Gallorage	Base Facility	Gallorage	Base Facility	Gallorage
Jasmine Lakes	\$10.63	\$2.67	\$13.80	\$3.47	\$16.90	\$5.84
Palm Terrace	\$18.88	\$4.14	\$26.91	\$5.90	\$16.90	\$5.84
Zephyr Shores	\$11.29	\$9.45	\$16.09	\$13.47	\$16.90	\$5.84
Polk	Base Facility	Gallorage	Base Facility	Gallorage	Base Facility	Gallorage
Gibsonia Estates	-	-	-	-	-	-
Lake Gibson Estates	\$26.73	-	\$38.10	-	\$100.58	\$7.72
Orange Hill/ Sugar Creek	-	-	-	-	-	-
Rosalie Oaks	\$14.81	\$6.37	\$32.75	\$14.09	\$100.58	\$7.72
Village Water	\$42.33	\$3.85	\$40.61	\$3.69	\$100.58	\$7.72
Putnum	Base Facility	Gallorage	Base Facility	Gallorage	Base Facility	Gallorage
Beecher's Point	\$21.24	\$6.98	\$30.27	\$9.95	\$66.10	\$18.71
Hermits Cove	-	-	-	-	-	-
Interlachen Lakes	-	-	-	-	-	-
Palm Port	\$20.10	\$8.19	\$28.65	\$11.67	\$66.10	\$18.71
Park Manor	\$29.53	\$5.90	\$42.09	\$8.41	\$66.10	\$18.71
Pomona Park	-	-	-	-	-	-
River Grove	-	-	-	-	-	-
Silver Lake Oaks	\$19.90	\$8.22	\$28.36	\$11.72	\$66.10	\$18.71
St. John's Highlands	-	-	-	-	-	-
Welaka/ Saratoga Harbour	-	-	-	-	-	-
Wootens	-	-	-	-	-	-
Seminole	Base Facility	Gallorage	Base Facility	Gallorage	Base Facility	Gallorage
Chuluota	\$21.81	\$7.94	\$31.08	\$11.32	\$67.14	\$7.81
FL Central Commerce Park	\$38.37	\$5.17	\$54.68	\$7.37	\$67.14	\$7.81
Harmony Homes	-	-	-	-	-	-
Sumter	Base Facility	Gallorage	Base Facility	Gallorage	Base Facility	Gallorage
The Woods	\$15.74	\$4.10	\$38.12	\$9.93	\$40.22	\$17.80
Volusia	Base Facility	Gallorage	Base Facility	Gallorage	Base Facility	Gallorage
Jungle Den	\$12.24	\$9.48	\$17.44	\$13.51	\$31.63	\$29.92
Tomoka/ Twin Rivers	-	-	-	-	-	-
Washington	Base Facility	Gallorage	Base Facility	Gallorage	Base Facility	Gallorage
Sunny Hills	\$19.56	\$8.24	\$27.88	\$11.74	\$33.97	\$9.25

** General Service rates available upon request.

Residential Water Bills At Various Consumption Levels (5/8 x 3/4 inch meters)

	Rates Prior to Filing				Interim Rates				Requested Final			
	3,000 Gallons	5,000 Gallons	10,000 Gallons	3,000 Gallons	5,000 Gallons	10,000 Gallons	3,000 Gallons	5,000 Gallons	10,000 Gallons	3,000 Gallons	5,000 Gallons	10,000 Gallons
Alachua												
Arredondo Estates	\$20.45	\$25.05	\$36.55	\$26.74	\$32.76	\$47.81	\$35.09	\$43.49	\$68.69	\$35.09	\$43.49	\$68.69
Arredondo Farms	\$20.45	\$25.05	\$36.55	\$26.74	\$32.76	\$47.81	\$35.09	\$43.49	\$68.69	\$35.09	\$43.49	\$68.69
Brevard												
Kingswood	\$19.09	\$24.87	\$39.32	\$25.71	\$33.49	\$52.94	\$66.21	\$84.15	\$137.96	\$66.21	\$84.15	\$137.96
Oakwood	\$19.09	\$24.87	\$39.32	\$25.71	\$33.49	\$52.94	\$66.21	\$84.15	\$137.96	\$66.21	\$84.15	\$137.96
Highlands												
Lake Josephine	\$13.98	\$17.38	\$25.88	\$19.58	\$24.34	\$36.24	\$45.95	\$57.37	\$91.64	\$45.95	\$57.37	\$91.64
Leisure Lakes	\$22.29	\$31.87	\$55.82	\$30.02	\$42.92	\$75.17	\$45.95	\$57.37	\$91.64	\$45.95	\$57.37	\$91.64
Sebring Lakes	\$14.90	\$18.92	\$28.97	\$79.56	\$101.02	\$154.67	\$45.95	\$57.37	\$91.64	\$45.95	\$57.37	\$91.64
Lake												
Carlton Village	\$29.64	\$37.16	\$55.96	\$39.91	\$50.03	\$75.33	\$28.19	\$32.73	\$46.36	\$28.19	\$32.73	\$46.36
East Lake Harris	\$22.64	\$32.16	\$55.96	\$30.49	\$43.31	\$75.36	\$28.19	\$32.73	\$46.36	\$28.19	\$32.73	\$46.36
Fern Terrace	\$19.10	\$24.88	\$39.33	\$25.72	\$33.50	\$62.95	\$28.19	\$32.73	\$46.36	\$28.19	\$32.73	\$46.36
Friendly Center	\$27.56	\$35.58	\$55.63	\$37.12	\$47.92	\$74.92	\$28.19	\$32.73	\$46.36	\$28.19	\$32.73	\$46.36
Grand Terrace	\$15.94	\$20.10	\$30.50	\$21.47	\$27.07	\$41.07	\$28.19	\$32.73	\$46.36	\$28.19	\$32.73	\$46.36
Haines Creek	\$13.74	\$16.72	\$24.17	\$19.11	\$23.25	\$33.60	\$28.19	\$32.73	\$46.36	\$28.19	\$32.73	\$46.36
Hobby Hills	\$16.00	\$20.20	\$30.70	\$20.84	\$25.60	\$37.50	\$28.19	\$32.73	\$46.36	\$28.19	\$32.73	\$46.36
Holiday Haven	\$23.76	\$32.82	\$55.47	\$32.00	\$44.20	\$74.70	\$28.19	\$32.73	\$46.36	\$28.19	\$32.73	\$46.36
Imperial Mobile Terrace	\$19.09	\$24.87	\$39.32	\$25.71	\$33.49	\$52.94	\$28.19	\$32.73	\$46.36	\$28.19	\$32.73	\$46.36
JS - 48 Estates	\$20.55	\$24.53	\$34.48	\$24.65	\$29.43	\$41.38	\$28.19	\$32.73	\$46.36	\$28.19	\$32.73	\$46.36
JS - Kings Cove	\$11.80	\$14.36	\$20.76	\$16.89	\$20.55	\$29.70	\$28.19	\$32.73	\$46.36	\$28.19	\$32.73	\$46.36
JS - Summit Chase	\$17.02	\$22.26	\$35.36	\$22.15	\$28.97	\$46.02	\$28.19	\$32.73	\$46.36	\$28.19	\$32.73	\$46.36
Morningview	\$29.35	\$36.95	\$55.95	\$39.54	\$49.78	\$75.38	\$28.19	\$32.73	\$46.36	\$28.19	\$32.73	\$46.36
Palms MHP	\$21.99	\$31.71	\$56.01	\$29.63	\$42.73	\$75.48	\$28.19	\$32.73	\$46.36	\$28.19	\$32.73	\$46.36
Picciola Island	\$19.09	\$24.87	\$39.32	\$25.71	\$33.49	\$52.94	\$28.19	\$32.73	\$46.36	\$28.19	\$32.73	\$46.36
Piney Woods	\$24.02	\$29.36	\$42.71	\$32.37	\$39.57	\$57.57	\$28.19	\$32.73	\$46.36	\$28.19	\$32.73	\$46.36
Quail Ridge	\$31.78	\$38.68	\$55.93	\$42.82	\$52.12	\$75.37	\$28.19	\$32.73	\$46.36	\$28.19	\$32.73	\$46.36
Ravenswood	\$17.57	\$21.15	\$30.10	\$26.67	\$31.95	\$45.15	\$28.19	\$32.73	\$46.36	\$28.19	\$32.73	\$46.36
Silver Lake Estate/ Western Shores	\$11.33	\$13.89	\$20.29	\$15.25	\$18.69	\$27.29	\$28.19	\$32.73	\$46.36	\$28.19	\$32.73	\$46.36

Residential Water Bills												
At Various Consumption Levels (5/8 x 3/4 inch meters)												
Lake	Rates Prior to Filing			Interim Rates			Requested Final					
	3,000 Gallons	5,000 Gallons	10,000 Gallons	3,000 Gallons	5,000 Gallons	10,000 Gallons	3,000 Gallons	5,000 Gallons	10,000 Gallons			
Skycrest	\$26.61	\$34.91	\$55.66	\$35.84	\$47.02	\$74.97	\$28.19	\$32.73	\$46.36			
Stone Mountain	\$35.77	\$41.59	\$56.14	\$48.18	\$56.02	\$75.62	\$28.19	\$32.73	\$46.36			
Valencia Terrace	\$16.00	\$20.20	\$30.70	\$21.56	\$27.22	\$41.37	\$28.19	\$32.73	\$46.36			
Venetian Village	\$21.51	\$29.13	\$48.18	\$28.97	\$39.23	\$64.88	\$28.19	\$32.73	\$46.36			
Lee	3,000 Gallons	5,000 Gallons	10,000 Gallons	3,000 Gallons	5,000 Gallons	10,000 Gallons	3,000 Gallons	5,000 Gallons	10,000 Gallons			
South Seas	-	-	-	-	-	-	-	-	-			
Marion	3,000 Gallons	5,000 Gallons	10,000 Gallons	3,000 Gallons	5,000 Gallons	10,000 Gallons	3,000 Gallons	5,000 Gallons	10,000 Gallons			
Ocala Oaks	\$18.11	\$20.57	\$26.72	\$25.37	\$28.81	\$37.41	\$31.44	\$36.32	\$50.92			
Orange	3,000 Gallons	5,000 Gallons	10,000 Gallons	3,000 Gallons	5,000 Gallons	10,000 Gallons	3,000 Gallons	5,000 Gallons	10,000 Gallons			
Tangerine	\$13.18	\$16.16	\$23.61	\$17.76	\$21.78	\$31.83	\$28.74	\$32.82	\$45.06			
Palm Beach	3,000 Gallons	5,000 Gallons	10,000 Gallons	3,000 Gallons	5,000 Gallons	10,000 Gallons	3,000 Gallons	5,000 Gallons	10,000 Gallons			
Lake Osborne	\$10.12	\$14.10	\$24.05	\$20.04	\$27.92	\$47.62	\$32.09	\$37.45	\$53.53			
Pasco	3,000 Gallons	5,000 Gallons	10,000 Gallons	3,000 Gallons	5,000 Gallons	10,000 Gallons	3,000 Gallons	5,000 Gallons	10,000 Gallons			
Jasmine Lakes	\$18.53	\$24.79	\$40.44	\$20.12	\$26.38	\$42.03	\$30.31	\$38.17	\$61.78			
Palm Terrace	\$19.09	\$24.87	\$39.32	\$25.71	\$33.49	\$52.94	\$30.31	\$38.17	\$61.78			
Zephyr Shores	\$20.97	\$30.83	\$55.48	\$22.37	\$32.93	\$59.33	\$30.31	\$38.17	\$61.78			
Polk	3,000 Gallons	5,000 Gallons	10,000 Gallons	3,000 Gallons	5,000 Gallons	10,000 Gallons	3,000 Gallons	5,000 Gallons	10,000 Gallons			
Gibsonia Estates	\$7.30	\$8.58	\$11.78	\$9.83	\$11.55	\$15.85	\$30.27	\$35.95	\$52.99			
Lake Gibson Estates	\$9.74	\$11.70	\$16.60	\$15.14	\$19.80	\$31.45	\$30.27	\$35.95	\$52.99			
Orange Hill/ Sugar Creek	\$13.08	\$15.74	\$22.39	\$17.61	\$21.19	\$30.14	\$30.27	\$35.95	\$52.99			
Rosalie Oaks	\$13.25	\$15.03	\$21.78	\$31.67	\$35.93	\$52.08	\$30.27	\$35.95	\$52.99			
Village Water	\$20.32	\$25.30	\$37.75	\$30.02	\$37.38	\$55.78	\$30.27	\$35.95	\$52.99			
Putnum	3,000 Gallons	5,000 Gallons	10,000 Gallons	3,000 Gallons	5,000 Gallons	10,000 Gallons	3,000 Gallons	5,000 Gallons	10,000 Gallons			
Beecher's Point	\$28.03	\$36.01	\$55.96	\$37.74	\$48.48	\$75.33	\$55.08	\$69.02	\$110.83			
Hermits Cove	\$23.25	\$32.53	\$55.73	\$31.32	\$43.82	\$75.07	\$55.08	\$69.02	\$110.83			
Interlachen Lakes	\$21.48	\$29.10	\$48.15	\$28.93	\$39.19	\$64.84	\$55.08	\$69.02	\$110.83			
Palm Port	\$25.34	\$34.02	\$55.72	\$34.15	\$45.85	\$75.10	\$55.08	\$69.02	\$110.83			

Residential Water Bills At Various Consumption Levels (5/8 x 3/4 inch meters)												
	Rates Prior to Filing				Interim Rates				Requested Final			
	3,000 Gallons	5,000 Gallons	10,000 Gallons	3,000 Gallons	5,000 Gallons	10,000 Gallons	3,000 Gallons	5,000 Gallons	10,000 Gallons	3,000 Gallons	5,000 Gallons	10,000 Gallons
Putnum												
Park Manor	-	-	-	-	-	-	-	-	-	-	-	-
Pomona Park	\$24.02	\$29.36	\$42.71	\$32.37	\$39.57	\$57.57	\$55.08	\$69.02	\$110.83	\$55.08	\$69.02	\$110.83
River Grove	\$21.48	\$29.10	\$48.15	\$28.93	\$39.19	\$64.84	\$55.08	\$69.02	\$110.83	\$55.08	\$69.02	\$110.83
Silver Lake Oaks	\$27.57	\$35.63	\$55.78	\$37.14	\$48.00	\$75.15	\$55.08	\$69.02	\$110.83	\$55.08	\$69.02	\$110.83
St. John's Highlands	\$22.88	\$32.22	\$55.57	\$30.82	\$43.40	\$74.85	\$55.08	\$69.02	\$110.83	\$55.08	\$69.02	\$110.83
Welaka/												
Saratoga Harbour	\$23.73	\$32.85	\$55.65	\$31.96	\$44.24	\$74.94	\$55.08	\$69.02	\$110.83	\$55.08	\$69.02	\$110.83
Wootens	\$23.15	\$32.49	\$55.84	\$31.18	\$43.76	\$75.21	\$55.08	\$69.02	\$110.83	\$55.08	\$69.02	\$110.83
Seminole												
Chuluota	\$21.48	\$29.10	\$48.15	\$28.93	\$39.19	\$64.84	\$34.68	\$39.52	\$54.02	\$34.68	\$39.52	\$54.02
FL Central Commerce Park	-	-	-	-	-	-	-	-	-	-	-	-
Harmony Homes	\$31.13	\$38.15	\$55.70	\$41.94	\$51.40	\$75.05	\$34.68	\$39.52	\$54.02	\$34.68	\$39.52	\$54.02
Sumter												
The Woods	\$25.67	\$31.85	\$47.30	\$67.27	\$83.47	\$123.97	\$58.73	\$76.07	\$128.06	\$58.73	\$76.07	\$128.06
Volusia												
Jungle Den	\$21.14	\$30.98	\$55.58	\$28.48	\$41.74	\$74.89	\$38.11	\$47.39	\$75.23	\$38.11	\$47.39	\$75.23
Tomoka/Twin Rivers	\$8.72	\$11.44	\$18.24	\$11.74	\$15.40	\$24.55	\$38.11	\$47.39	\$75.23	\$38.11	\$47.39	\$75.23
Washington												
Sunny Hills	\$24.73	\$33.57	\$55.67	\$33.30	\$45.20	\$74.95	\$37.17	\$45.85	\$71.91	\$37.17	\$45.85	\$71.91

Residential Wastewater Bills At Various Consumption Levels (All meters sizes)

Wastewater*	Rates Prior to Filing			Interim Rates			Requested Final		
	3,000 Gallons	5,000 Gallons	10,000 Gallons	3,000 Gallons	5,000 Gallons	10,000 Gallons	3,000 Gallons	5,000 Gallons	10,000 Gallons
Putnum									
Palm Port	\$44.67	\$61.05	\$69.24	\$63.66	\$87.00	\$98.67	\$122.23	\$159.65	\$178.36
Park Manor	\$47.23	\$59.03	\$64.93	\$67.32	\$84.14	\$92.55	\$122.23	\$159.65	\$178.36
Pomona Park	-	-	-	-	-	-	-	-	-
River Grove	-	-	-	-	-	-	-	-	-
Silver Lake Oaks	\$44.56	\$61.00	\$69.22	\$63.52	\$86.96	\$98.68	\$122.23	\$159.65	\$178.36
St. John's Highlands	-	-	-	-	-	-	-	-	-
Weiaka/ Saratoga Harbour	-	-	-	-	-	-	-	-	-
Wootens	-	-	-	-	-	-	-	-	-
Seminole									
Chuluota	\$45.63	\$61.51	\$69.45	\$65.04	\$87.68	\$99.00	\$90.57	\$106.19	\$114.00
FL Central Commerce Park*****	\$53.88	\$64.22	\$90.07	\$76.79	\$91.53	\$128.38	\$90.57	\$106.19	\$145.24
Harmony Homes	-	-	-	-	-	-	-	-	-
Sumter									
The Woods	\$28.04	\$36.24	\$40.34	\$67.91	\$87.77	\$97.70	\$93.62	\$129.22	\$147.02
Volusia									
Jungle Den	\$40.68	\$59.64	\$69.12	\$57.97	\$84.99	\$98.50	\$121.39	\$181.23	\$211.15
Tomoka/Twin Rivers	-	-	-	-	-	-	-	-	-
Washington									
Sunny Hills	\$44.28	\$60.76	\$69.00	\$63.10	\$86.58	\$98.32	\$61.72	\$80.22	\$89.47

* The Utility has requested a 6,000 cap on most Residential Wastewater rates

** Arredondo Estates and Arredondo Farms has a current gallon cap of 7,000 gallons

*** Holiday Haven has a current gallon cap of 10,000 gallons

**** Summit Chase will maintain a gallon cap of 10,000 gallons

***** South Seas Oaks has a current gallon cap of 10,000 gallons

***** Lake Gibson Estates currently is charged a flat rate, The Utility has requested a switch to a base charge plus a gallonage charge

***** Florida Central Commerce Park has no current Residential customers

STAMP

Florida Public Service Commission
Office of Commission Clerk
2540 Shumard Oak Boulevard
Tallahassee, Florida 32399-0850

Fold Here

Tape

Fold Here