

# Public Power in Florida

## Mutual Aid and Storm Readiness

Barry Moline

Executive Director

Florida Municipal Electric Association

[bmoline@publicpower.com](mailto:bmoline@publicpower.com)

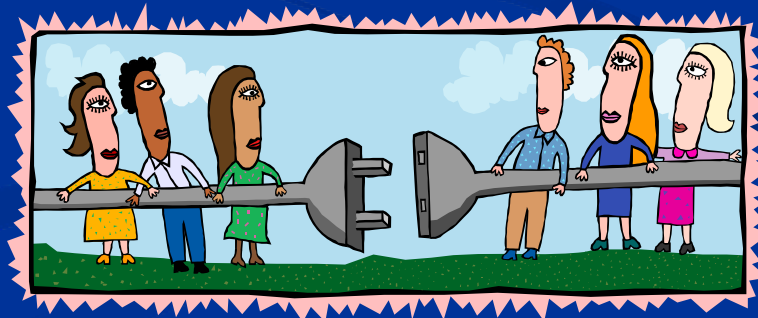
850-224-3314

May 2011



# Profile

- 34 municipal electric utilities
- 1.3 million customer meters
- 14% of Florida's population
- Large Utilities
  - JEA (Jacksonville): 404,000 customers
  - OUC (Orlando): 198,000 customers
  - Tallahassee: 111,000 customers
- Small Utilities
  - Bushnell: 1,147 customers
- Combined, 3<sup>rd</sup> largest utility behind FPL and Progress Energy



# Florida's Public Power Utilities

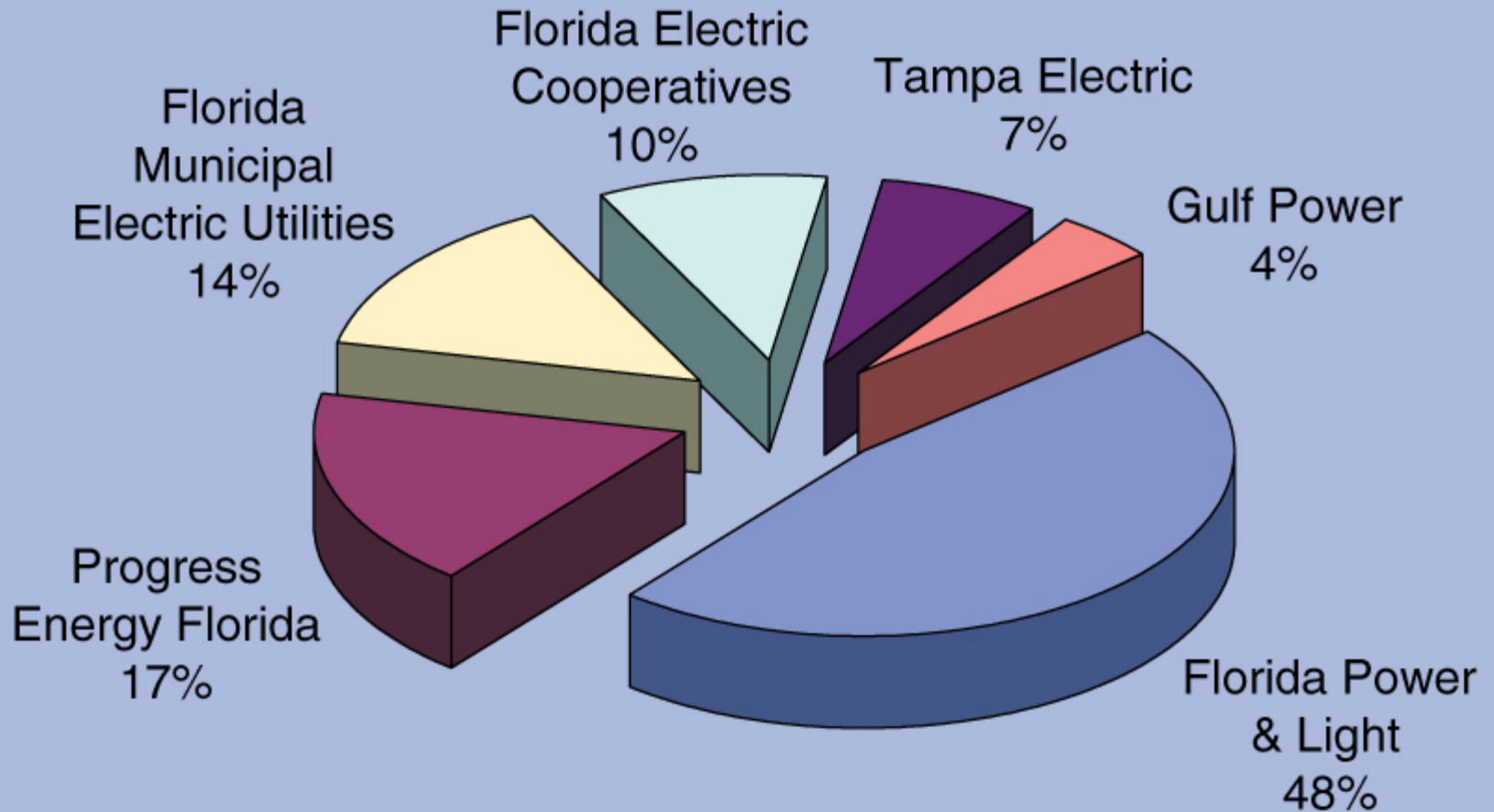


# Power Supply

- How do the small utilities generate power?
  - They don't...
- Only 12 of 34 generate electricity
- Others purchase power from:
  - Florida Municipal Power Agency
    - 14 purchase all, 8 purchase some
  - Progress Energy
  - TECO Energy
  - Florida Power & Light
  - Gulf Power
  - Glades Co-op

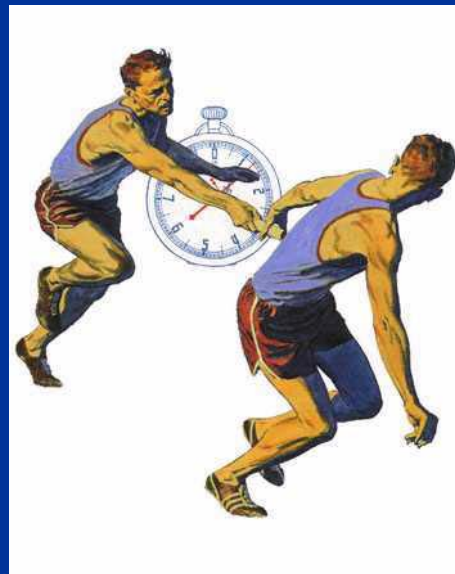


## Florida Utilities' Market Share



# Mutual Aid – Many Options

- Florida mutual aid
- Southeastern mutual aid
- National mutual aid



# Mutual Aid Agreements and Procedures

## MUTUAL AID AGREEMENT

In consideration of the mutual commitments given herein, each of the Signatories to this Mutual Aid Agreement agrees to render aid to any of the other Signatories as follows:

- 1.) **Request for aid.** The Requesting Signatory agrees to make its request in writing to the Aiding Signatory within a reasonable time after aid is needed and with reasonable specificity. The Requesting Signatory agrees to compensate the Aiding Signatory as specified in this Agreement and in other agreements that may be in effect between the Requesting and Aiding Signatories.
- 2.) **Discretionary rendering of aid.** Rendering of aid is entirely at the discretion of the Aiding Signatory. The agreement to render aid is expressly not contingent upon a declaration of a major disaster or emergency by the federal government or upon receiving federal funds.
- 3.) **Invoice to the Requesting Signatory.** Within 90 days of the return to the home work station of all labor and equipment of the Aiding Signatory, the Aiding Signatory shall submit to the Requesting Signatory an invoice of all charges related to the aid provided pursuant to this Agreement. The invoice shall contain only charges related to the aid provided pursuant to this Agreement.
- 4.) **Charges to the Requesting Signatory.** Charges to the Requesting Signatory from the Aiding Signatory shall be as follows:
  - a.) **Labor force.** Charges for labor force shall be in accordance with the Aiding Signatory's standard practices.
  - b.) **Equipment.** Charges for equipment, such as bucket trucks, digger derricks, and other special equipment used by the Aiding Signatory, shall be at the reasonable and customary rates for such equipment in the Aiding Signatory's location.
  - c.) **Transportation.** The Aiding Signatory shall transport needed personnel and equipment by reasonable and customary means and shall charge reasonable and customary rates for such transportation.
  - d.) **Meals, lodging and other related expenses.** Charges for meals, lodging and other expenses related to the provision of aid pursuant to this Agreement shall be the reasonable and actual costs incurred by the Aiding Signatory.
- 5.) **Counterparts.** The Signatories may execute this Mutual Aid Agreement in one or more counterparts, with each counterpart being deemed an original Agreement, but with all counterparts being considered one Agreement.
- 6.) **Execution.** Each party hereto has read, agreed to and executed this Mutual Aid Agreement on the date indicated.

Date \_\_\_\_\_ Entity \_\_\_\_\_  
 \_\_\_\_\_  
 By \_\_\_\_\_  
 \_\_\_\_\_  
 Title \_\_\_\_\_

## FMEA Mutual Aid Procedures

### Mutual Aid Coordinators

Anytime prior to, during, or after a major storm/hurricane, contact one of the following mutual aid coordinators who will make arrangements for emergency assistance. Staff will work with you to either help you find crews or help you provide assistance to others. The telephone numbers below are cell phones, and are kept ON at all times before, during, and after storms.

<b>Barry Maline</b>	(850) 251-5060
<b>Cheryl Anderson</b>	(850) 251-5465
<b>Backup: Gene Way</b>	(407) 947-9984
<b>Joe McKinney</b>	(407) 947-5938

### Before the Storm:

#### 1. Check contact information.

Make certain all your utility contact information is correct on the FMEA Mutual Aid Directory.

#### 2. Identify available crews.

If the storm is NOT predicted to hit your area, tell the Storm Coordinator how many crews you have available for assistance to others.

### After the Storm:

#### 1. Call a coordinator after the storm for two reasons.

One is to request assistance and, two, to report on your outage status.

#### 2. Identify the types of work crews you may need.

These include specialists in overhead, underground or transmission.

#### 3. Identify the types of materials you may need.

For example, types of wire, conductor, cut tools and fuses.

#### 4. Identify the types of equipment you may need.

This includes bucket trucks, digger derricks, and chain saws.

Mutual aid coordinators will compile a list of needs for your community, then will work with you to contact other electric utilities.

### Out-of-State Emergency Assistance

If you are requesting any assistance from an out-of-state utility or contractor, the State Department of Transportation requires that you call ESF-12 (Emergency Operations Center) at (850) 921-0667 with the following information:

#### Name of company traveling into Florida;

- Number of vehicles;
- Destination in Florida;
- Your contact information.

If you fail to supply this information, the trucks may be stopped at the border.

### Providing Crews to Fellow Utilities

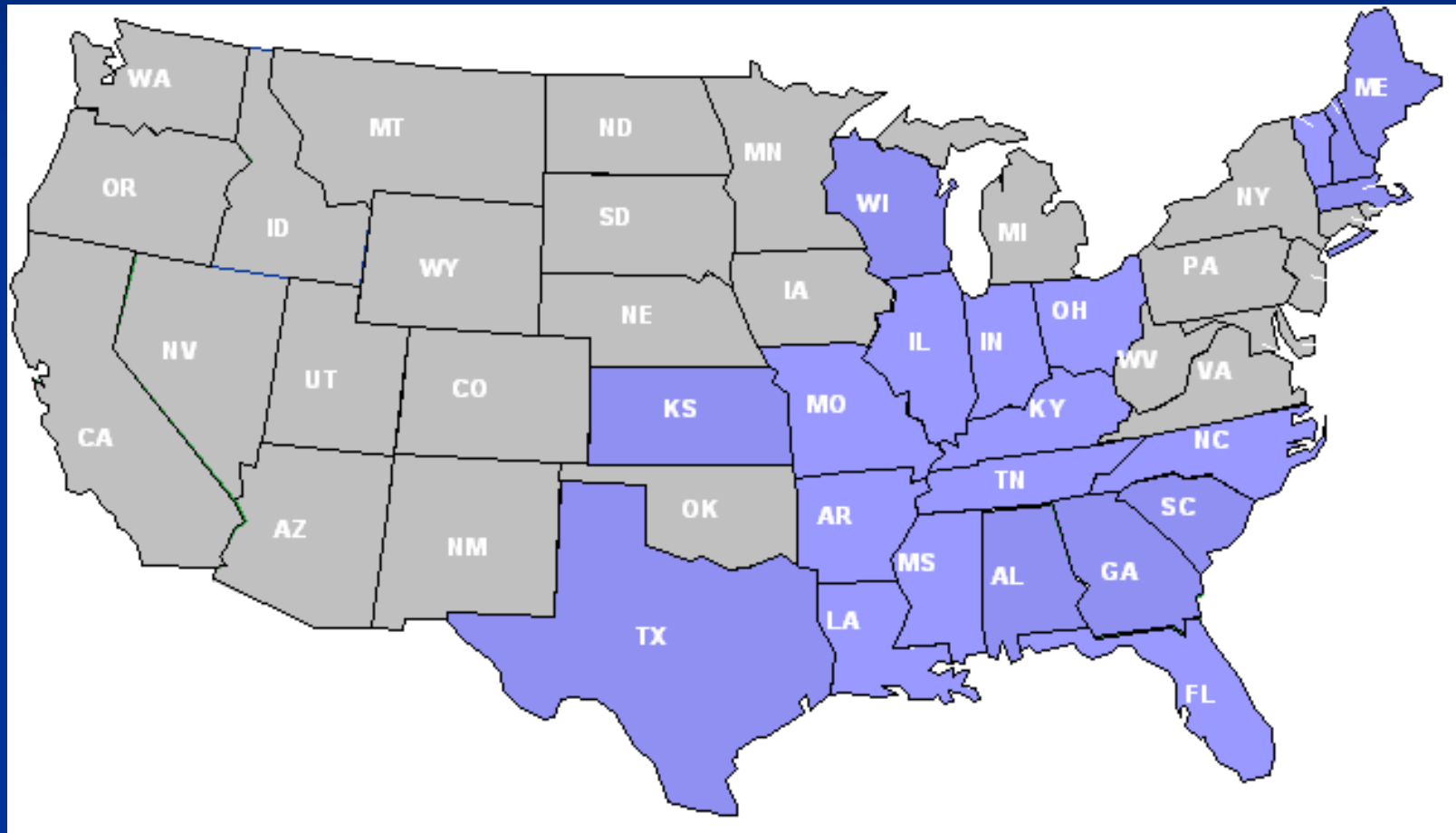
If after a storm, you have crews available to assist others, call a mutual aid coordinator to offer your availability. Please identify your crews' capabilities: e.g., overhead, underground, transmission. In addition, identify the type of equipment/trucks they can bring.

### Directory Corrections and Changes

The FMEA Mutual Aid Directory is updated throughout the year and e-mailed to mutual aid coordinators and FMEA members throughout the hurricane season. Send directory updates to: Brenda Thompson, Office Manager, E-mail: bthompson@pdclifepower.com, phone: (850) 224-3314, ext. 3, or fax changes to (850) 224-2831.



# Mutual Aid Has Come from Near & Far...





# Today

- **Orlando Utilities Commission (OUC)**
- **Some public power utilities may appear small, but together we have a strong state and national network**



**Thank You!**

