



# Hurricane Preparedness Workshop 2026

---

*April 20, 2026 | Florida Public Service Commission*

**Forrest Boone, Director of Regulatory Affairs**  
Florida Electric Cooperatives Association

# FLORIDA'S ELECTRIC COOPERATIVES

**18**

Electric  
Cooperatives

**2.7M**

Floridians  
Served

**95,632**

Miles of  
Line Maintained

**4,080**

Cooperative  
Employees

*Community-owned, private nonprofit utilities, built to serve Florida.*

# Preseason Preparation & Mutual Aid

**National Mutual Aid Network:** All 18 FECA members are party to the national agreement among co-ops.

**Resource Procurement:** Pre-storm contracts for emergency restoration needs.

**Equipment Inventory:** Transformers, conductor, and critical hardware purchased and planned for storm season.

**Hurricane Drills:** Annual tabletop exercises and operational drills test readiness before hurricane season opens.



*Co-op personnel reviewing base camp trailer options*

# FECA Storm Workshop

## 2026 Highlights

- 100 Attendees from Electric Cooperatives
- Tabletop Drill on Mutual Aid and Resource Tracking
- Jeff Goldberg, Walton County Emergency Management Director
- Guests from Mississippi, Michigan, and NRECA



*FECA's 2025 Storm Preparedness Workshop*

# Stakeholder Outreach and Communication

## EOC Engagement

Regular pre-season meetings with EOCs to align storm response plans and coordinate communication and restoration priority.

## Staff Assignments

Cooperative representatives deployed to local EOCs, coordination of restoration activities, and regular community leadership calls.

## Member Communications

Multi-channel outreach via websites and outage maps, text, email, and social media.

## Third-Party Coordination

Active coordination with cable, telecom, and other attachers, especially with current fiber buildout in many co-op areas.

# Vegetation Management

*Vegetation is a leading cause of outages*

- **Proactive trimming:** Directly reduces outage scope and restoration time.
- **Regular Trim Cycles:** Making sure every mile gets trimmed.
- **Hot-Spot Trimming:** Recurring problem areas identified through outage data receive targeted trimming between full-cycle work.
- **Member Communication:** Balancing right of way maintenance with community values.



*CHELCO: Coastal ROW, Walton County*

# Pole Inspection Program

Cooperatives follow USDA Rural Utilities Service and National Electric Safety Code standards.

## 1. Inspect

Systematic inspection of poles, hardware, and attachments

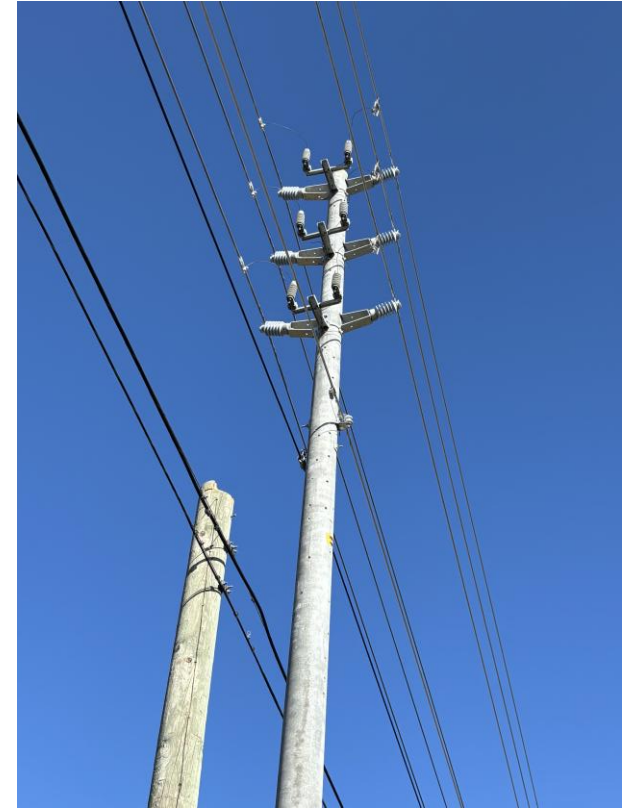
## 2. Treat

Preventive treatment for corrosion and decay

## 3. Replace

Targeted replacement of high-risk structures

*More than 210,000 poles inspected in 2025*

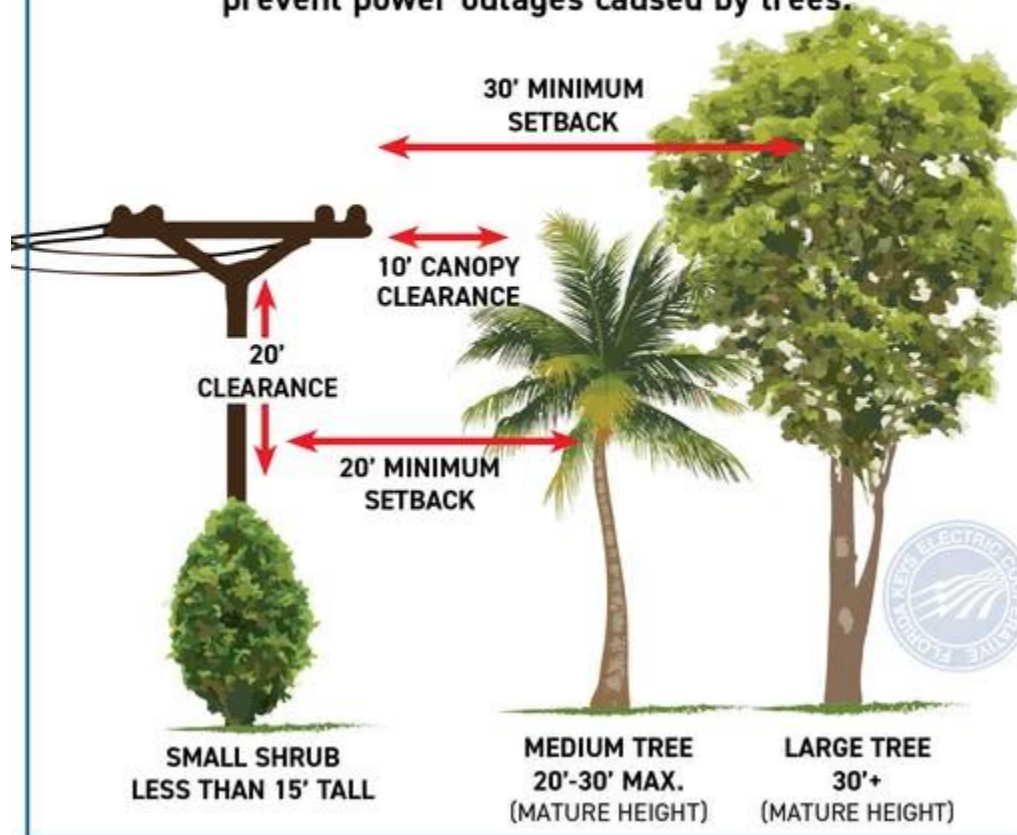


*SECO Energy: New steel pole alongside aging wood structure*



# Go the Distance!

Follow FKEC's proper planting guidelines to prevent power outages caused by trees.



# Infrastructure Hardening



*Peace River Electric Co-op: Before and after*



*LCEC: New line infrastructure installed*

# Advanced Grid Technology

## Recloser Installations



## Trip Saver Devices



# Priorities & Lessons Learned

01

**Safety First**

02

Thinking **Bigger**

03



**Consumer-  
Members  
Are the Mission**

04

**Co\$-effective  
Hardening**



# Thank You

---

*Florida's electric cooperatives are committed to safe, reliable service  
before, during, and after every storm.*